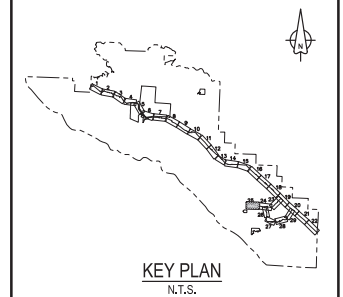
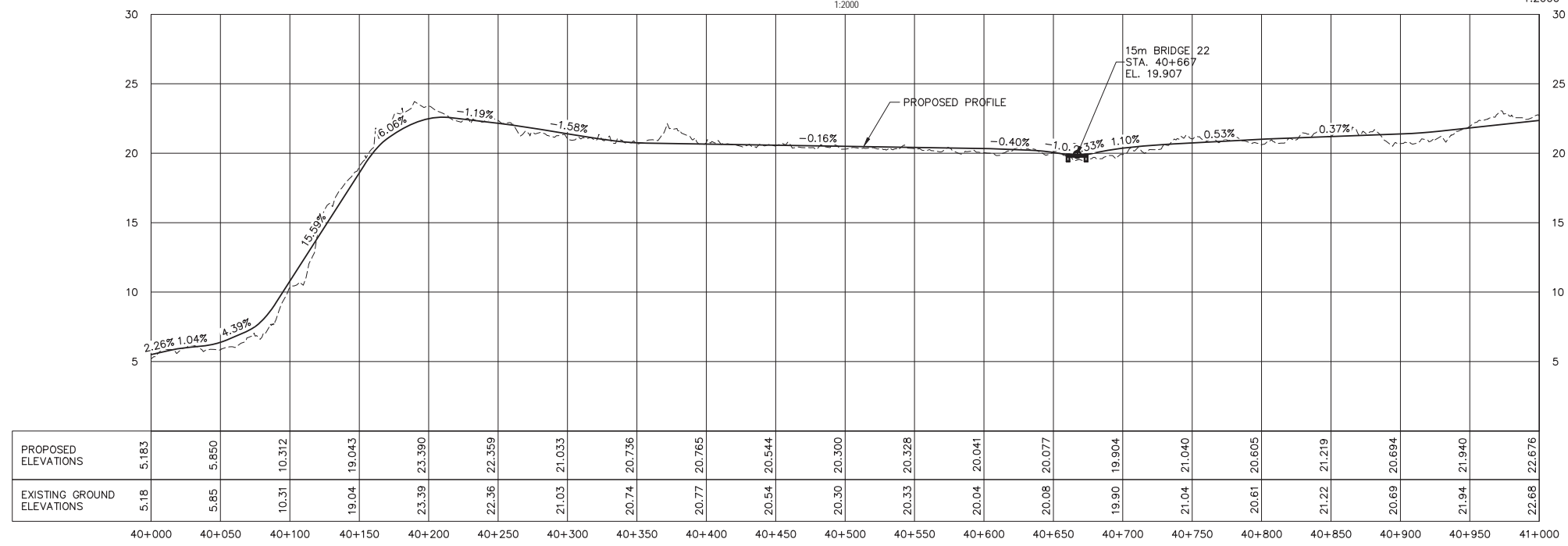


PLAN 1:2000

1:2000 0 40 120m



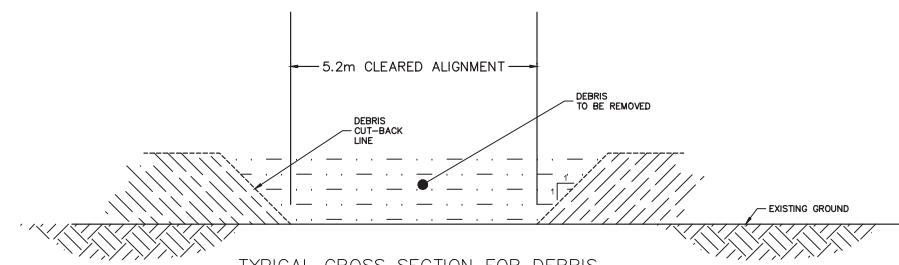
KEY PLAN N.T.S.



PRELIMINARY ALIGNMENT PROFILE 1:2000H & 1:200V

LEGEND

- PRELIMINARY ALIGNMENT
- FLAGGED ALIGNMENT
- TYPE A ELEVATED SECTION (UPDATED)
- TYPE B ELEVATED SECTION (UPDATED)
- PROPOSED RETAINING WALL (UPDATED)
- ▲ PRELIMINARY BRIDGE LOCATION
- ▲ SURVEYED BRIDGE LOCATION
- ACCESS CONTROL GATE
- ▼ TEMP ACCESS SURVEYED LOCATION



TYPICAL CROSS SECTION FOR DEBRIS AND DEADFALL CLEARING SCALE 1:75

PACIFIC TRAVERSE TRAIL GENERAL CLEARING NOTES:

- SURVEY DATA IS BASED UPON THE UTM NAD83 COORDINATE SYSTEM.
- THE CONTRACTOR SHALL CLEAR ALL TREES, BRANCHES, AND BRUSH FROM THE 5.2m WIDE ALIGNMENT EXCEPT WHERE SPECIFIED.
- ALL STUMPS REMAINING SHALL BE CUT TO WITHIN 150mm OF THE GROUND.
- MATERIAL OVER 200mm DIAMETER AND NOT DESIGNATED FOR SALVAGE SHALL BE LAID IN THE FOREST, OVER 5m FROM THE TRAIL CLEARING, AND IN FULL CONTACT WITH THE GROUND.
- MATERIAL OVER 200mm DIAMETER DESIGNATED FOR SALVAGE SHALL BE REMOVED AND STORED IN COMBERS BEACH PARKING LOT.
- EXISTING FALLEN GROUND DEBRIS SHALL BE CLEARED FROM THE 5.2m WIDE ALIGNMENT AND SLOPING AWAY FROM THE TRAIL AT A 1:1 (SEE TYPICAL CROSS SECTION).
- DANGER TREES SHALL BE FELLED BY THE CONTRACTOR AND REMOVED.
- THE CONTRACTOR SHALL SUPPLY TRAFFIC CONTROL (SIGNING, FLAGGERS) ON ROADS AND HIGHWAYS WHEN WORKING ADJACENT TO HIGHWAYS.
- THE CONTRACTOR SHALL ADHERE TO ALL ENVIRONMENTAL REGULATIONS AS SPECIFIED IN THE CONTRACT.
- NO DEBRIS OR EQUIPMENT SHALL BE DEPOSITED INTO STANDING OR RUNNING WATER.
- THE TRAIL ALIGNMENT SHOWN IS APPROXIMATE WITH FINAL ALIGNMENT ESTABLISHED IN THE FIELD BY THE DEPARTMENTAL REPRESENTATIVE.

Revision/Revisions	Description/Description	Date/Date
5	---	---
4	---	---
3	ISSUED FOR TENDER REVIEW	26/12/2016
2	ISSUED FOR TENDER REVIEW	23/11/2016
1	ISSUED FOR TENDER REVIEW	20/09/2016
0	50% SUBMISSION	15/08/2016

Client/client	
Parks Canada Agency	L'Agence Parcs Canada
Western and Northern Region	Ouest et Nord du Canada

Project title/Titre du projet
TOFINO, BC

PACIFIC RIM NATIONAL PARK RESERVE
PACIFIC TRAVERSE TRAIL

Consultant Signature Only

Designed by/Concept par
DON CHALMERS / 2016-11

Drawn by/Dessiné par
DAVID COX / 2016-11

PWGC Project Manager/Administrateur de Projets TPSGC
TOM DUNPHY

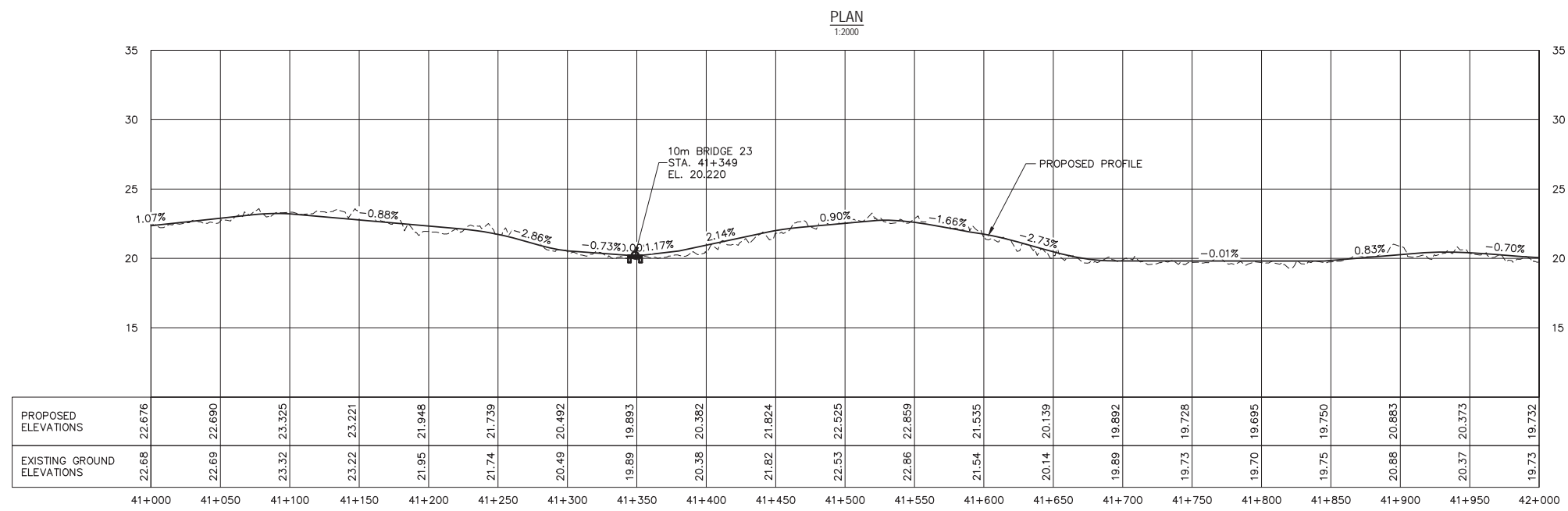
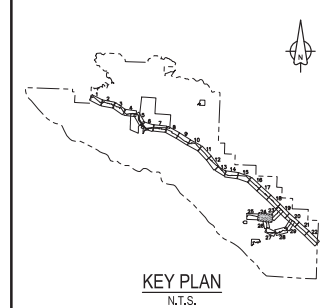
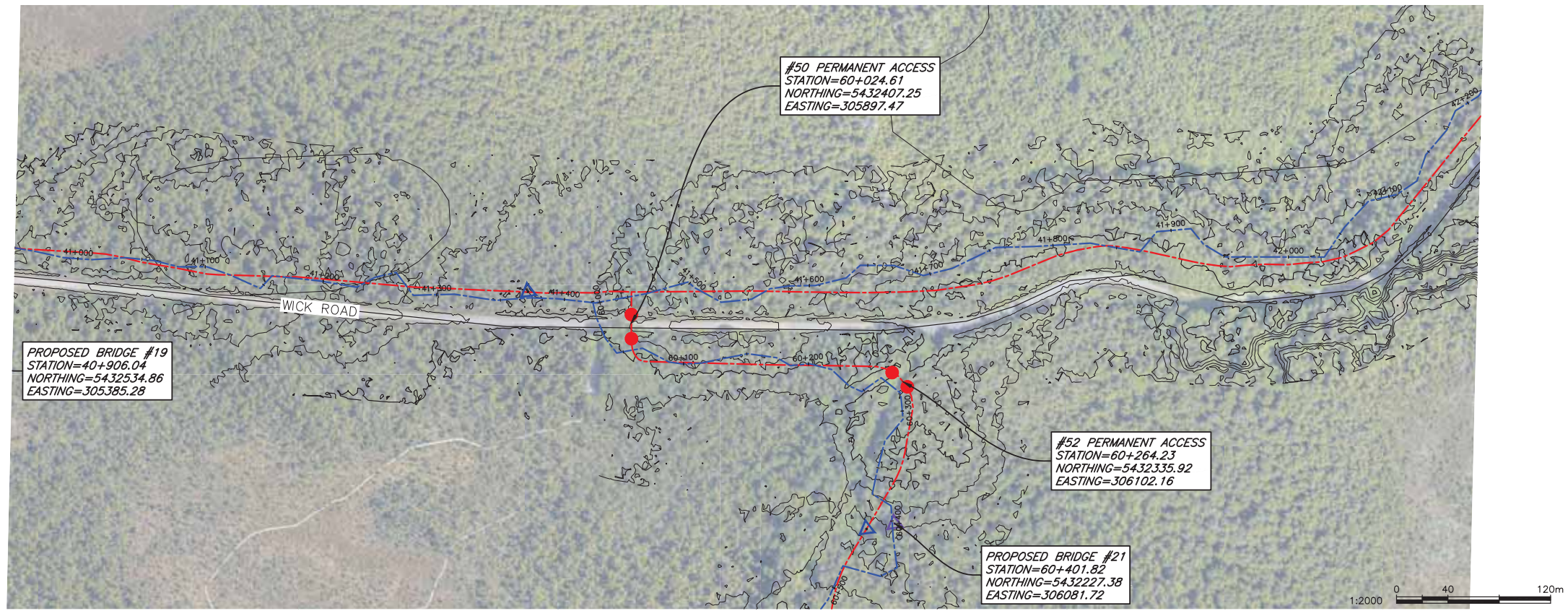
Regional Manager, Architectural and Engineering Services
Gestionnaire régionale, Services d'architecture et de génie, TPSGC
PREETIPAL PAUL

Drawing title/Titre du dessin
PACIFIC TRAVERSE TRAIL CLEARING PLAN

STA 40+000 TO STA 41+000

Project No./No. du projet R.081570.001	Sheet/Feuille C-23 OF 29	Revision no./La Révision no. 3
--	---------------------------------------	--





5	----	----
4	----	----
3	ISSUED FOR TENDER REVIEW	05/12/2016
2	ISSUED FOR TENDER REVIEW	23/11/2016
1	ISSUED FOR TENDER REVIEW	20/09/2016
0	50% SUBMISSION	15/08/2016
Revision/Revisions	Description/Description	Date/Date

Client/client
Parks Canada / L'Agence Parcs Canada
Western and Northern Region / Ouest et Nord du Canada

Project title/Titre du projet
TOFINO, BC
PACIFIC RIM NATIONAL PARK RESERVE
PACIFIC TRAVERSE TRAIL

Consultant Signature Only

Designed by/Concept par
DON CHALMERS / 2016-11
Drawn by/Dessiné par
DAVID COX / 2016-11
PWGSC Project Manager/Administrateur de Projets TPSGC
TOM DUNPHY

Regional Manager, Architectural and Engineering Services
Gestionnaire régionale, Services d'architecture et de génie, TPSGC
PREETIPAL PAUL
Drawing title/Titre du dessin
PACIFIC TRAVERSE TRAIL
CLEARING PLAN
STA 41+000 TO STA 42+000

Project No./No. du projet	Sheet/Feuille	Revision no./La Révision no.
R.081570.001	C-24 OF 29	3

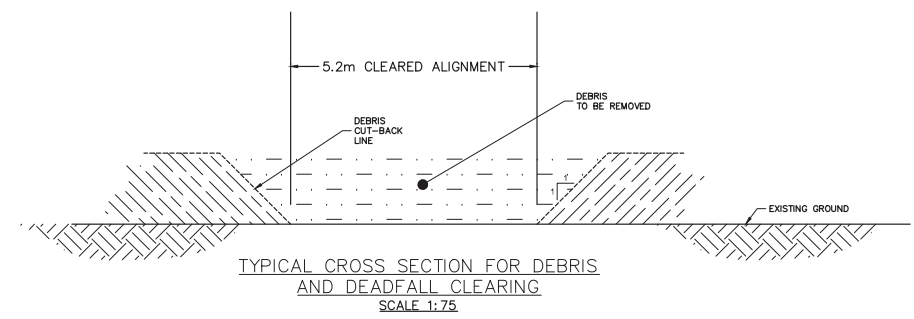
01/10/2017 - PWGSC - 2016-10-PACIFIC TRAVERSE TRAIL (MOUNTAIN) - SHEETS 23-28, C-45.DWG PLOTTED ON 2016/12/08 2:15pm BY P0047426

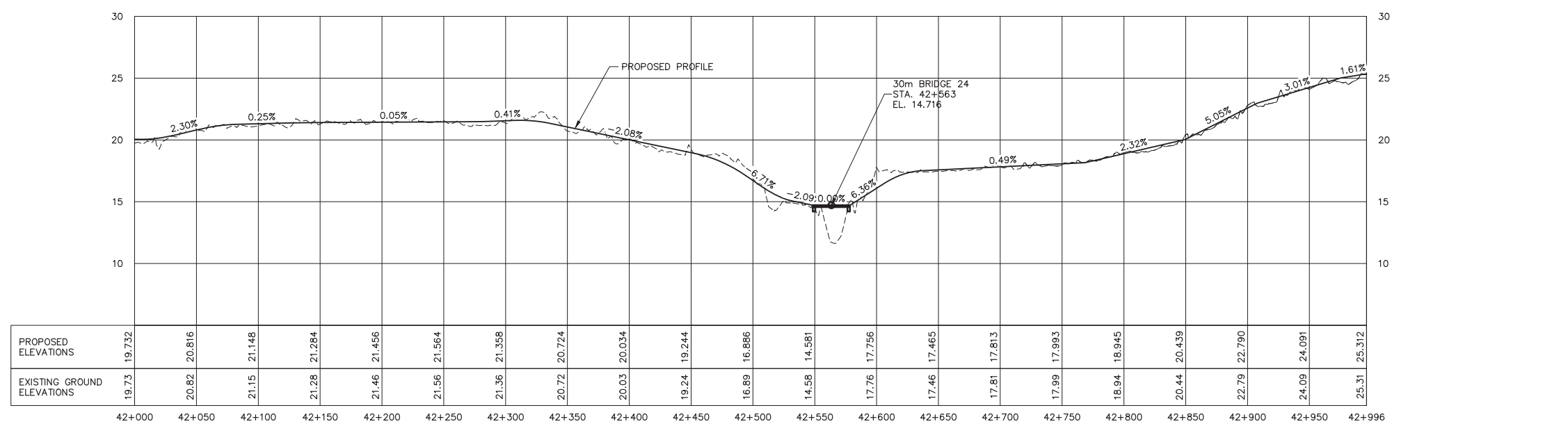
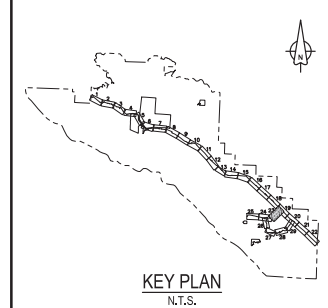
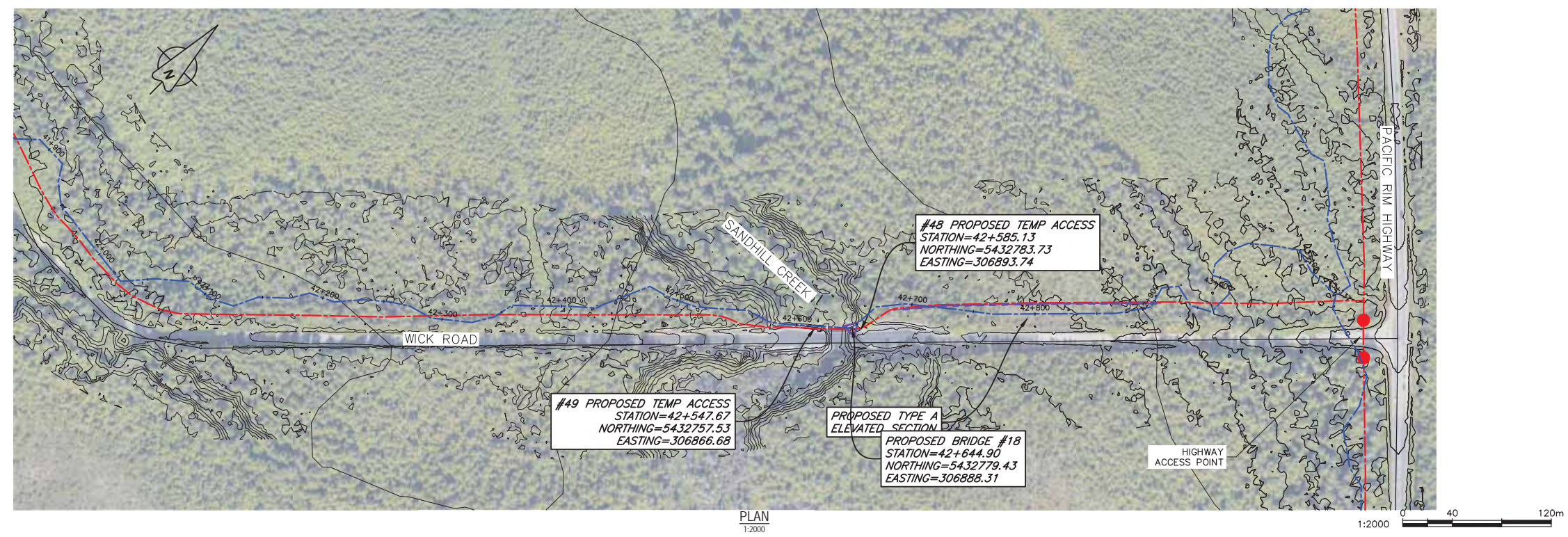
- PACIFIC TRAVERSE TRAIL GENERAL CLEARING NOTES:**
- SURVEY DATA IS BASED UPON THE UTM NAD83 COORDINATE SYSTEM.
 - THE CONTRACTOR SHALL CLEAR ALL TREES, BRANCHES, AND BRUSH FROM THE 5.2m WIDE ALIGNMENT EXCEPT WHERE SPECIFIED.
 - ALL STUMPS REMAINING SHALL BE CUT TO WITHIN 150mm OF THE GROUND.
 - MATERIAL OVER 200mm DIAMETER AND NOT DESIGNATED FOR SALVAGE SHALL BE LAID IN THE FOREST, OVER 5m FROM THE TRAIL CLEARING, AND IN FULL CONTACT WITH THE GROUND.
 - MATERIAL OVER 200mm DIAMETER DESIGNATED FOR SALVAGE SHALL BE REMOVED AND STORED IN COMBERS BEACH PARKING LOT.

- EXISTING FALLEN GROUND DEBRIS SHALL BE CLEARED FROM THE 5.2m WIDE ALIGNMENT AND SLOPING AWAY FROM THE TRAIL AT A 1:1 (SEE TYPICAL CROSS SECTION).
- DANGER TREES SHALL BE FELLED BY THE CONTRACTOR AND REMOVED.
- THE CONTRACTOR SHALL SUPPLY TRAFFIC CONTROL (SIGNING, FLAGGERS) ON ROADS AND HIGHWAYS WHEN WORKING ADJACENT TO HIGHWAYS.
- THE CONTRACTOR SHALL ADHERE TO ALL ENVIRONMENTAL REGULATIONS AS SPECIFIED IN THE CONTRACT.
- NO DEBRIS OR EQUIPMENT SHALL BE DEPOSITED INTO STANDING OR RUNNING WATER.
- THE TRAIL ALIGNMENT SHOWN IS APPROXIMATE WITH FINAL ALIGNMENT ESTABLISHED IN THE FIELD BY THE DEPARTMENTAL REPRESENTATIVE.

PRELIMINARY ALIGNMENT PROFILE
1:2000H & 1:200V

- LEGEND**
- PRELIMINARY ALIGNMENT
 - FLAGGED ALIGNMENT
 - TYPE A ELEVATED SECTION (UPDATED)
 - TYPE B ELEVATED SECTION (UPDATED)
 - PROPOSED RETAINING WALL (UPDATED)
 - ▲ PRELIMINARY BRIDGE LOCATION
 - ▲ SURVEYED BRIDGE LOCATION
 - ACCESS CONTROL GATE
 - ▼ TEMP ACCESS SURVEYED LOCATION





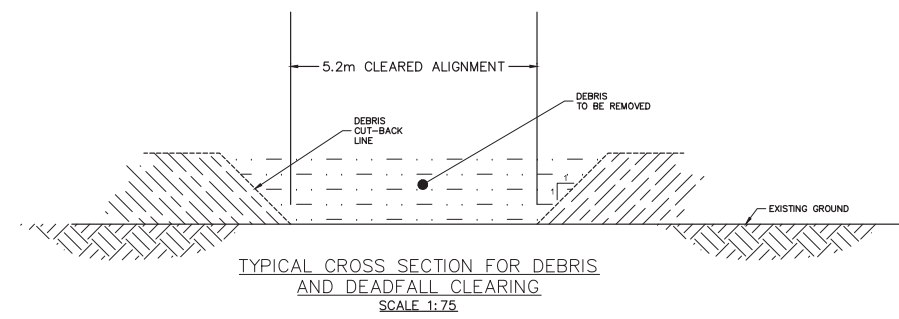
PRELIMINARY ALIGNMENT PROFILE
1:2000H & 1:200V

PACIFIC TRAVERSE TRAIL GENERAL CLEARING NOTES:

- SURVEY DATA IS BASED UPON THE UTM NAD83 COORDINATE SYSTEM.
- THE CONTRACTOR SHALL CLEAR ALL TREES, BRANCHES, AND BRUSH FROM THE 5.2m WIDE ALIGNMENT EXCEPT WHERE SPECIFIED.
- ALL STUMPS REMAINING SHALL BE CUT TO WITHIN 150mm OF THE GROUND.
- MATERIAL OVER 200mm DIAMETER AND NOT DESIGNATED FOR SALVAGE SHALL BE LAID IN THE FOREST, OVER 5m FROM THE TRAIL CLEARING, AND IN FULL CONTACT WITH THE GROUND.
- MATERIAL OVER 200mm DIAMETER DESIGNATED FOR SALVAGE SHALL BE REMOVED AND STORED IN COMBERS BEACH PARKING LOT.
- EXISTING FALLEN GROUND DEBRIS SHALL BE CLEARED FROM THE 5.2m WIDE ALIGNMENT AND SLOPING AWAY FROM THE TRAIL AT A 1:1 (SEE TYPICAL CROSS SECTION).
- DANGER TREES SHALL BE FELLED BY THE CONTRACTOR AND REMOVED.
- THE CONTRACTOR SHALL SUPPLY TRAFFIC CONTROL (SIGNING, FLAGGERS) ON ROADS AND HIGHWAYS WHEN WORKING ADJACENT TO HIGHWAYS.
- THE CONTRACTOR SHALL ADHERE TO ALL ENVIRONMENTAL REGULATIONS AS SPECIFIED IN THE CONTRACT.
- NO DEBRIS OR EQUIPMENT SHALL BE DEPOSITED INTO STANDING OR RUNNING WATER.
- THE TRAIL ALIGNMENT SHOWN IS APPROXIMATE WITH FINAL ALIGNMENT ESTABLISHED IN THE FIELD BY THE DEPARTMENTAL REPRESENTATIVE.

LEGEND

- PRELIMINARY ALIGNMENT
- FLAGGED ALIGNMENT
- TYPE A ELEVATED SECTION (UPDATED)
- TYPE B ELEVATED SECTION (UPDATED)
- PROPOSED RETAINING WALL (UPDATED)
- ▲ PRELIMINARY BRIDGE LOCATION
- ▲ SURVEYED BRIDGE LOCATION
- ACCESS CONTROL GATE
- ▼ TEMP ACCESS SURVEYED LOCATION



Revision/Revisions	Description/Description	Date/Date
5	---	---
4	---	---
3	ISSUED FOR TENDER REVIEW	05/12/2016
2	ISSUED FOR TENDER REVIEW	23/11/2016
1	ISSUED FOR TENDER REVIEW	20/09/2016
0	50% SUBMISSION	15/08/2016

Client/client	
Parks Canada Agency	L'Agence Parcs Canada
Western and Northern Region	Ouest et Nord du Canada

Project title/Titre du projet
TOFINO, BC

PACIFIC RIM NATIONAL PARK RESERVE
PACIFIC TRAVERSE TRAIL

Consultant Signature Only

Designed by/Concept par
DON CHALMERS / 2016-11

Drawn by/Dessiné par
DAVID COX / 2016-11

PWGC Project Manager/Administrateur de Projets TPSGC
TOM DUNPHY

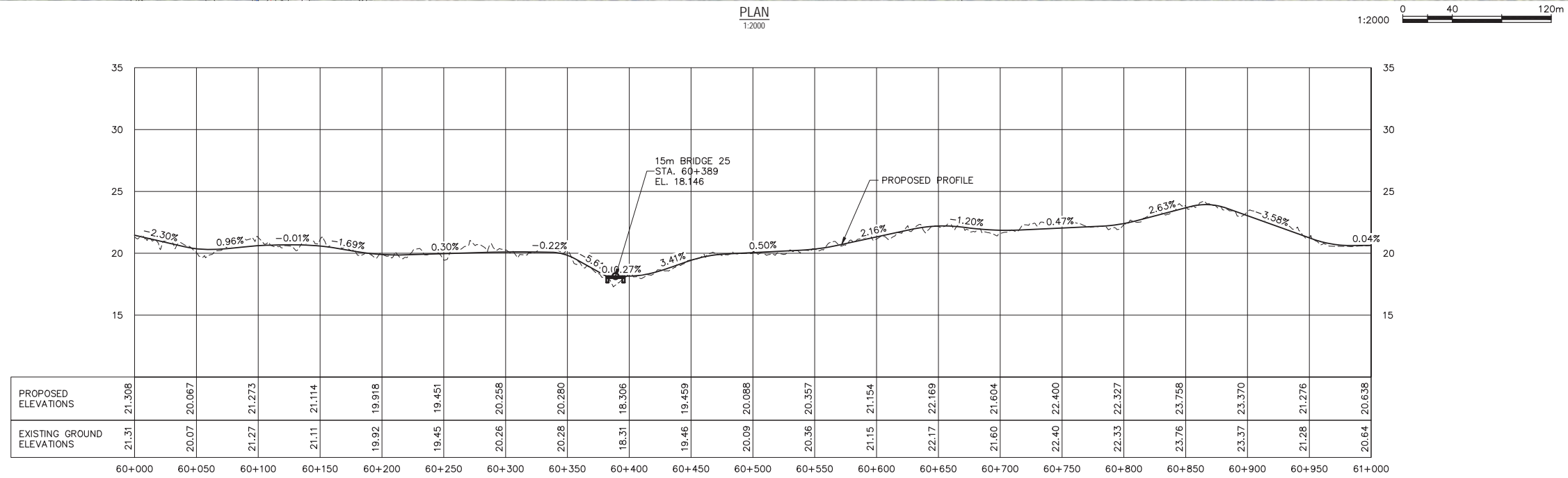
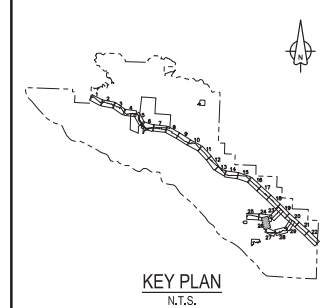
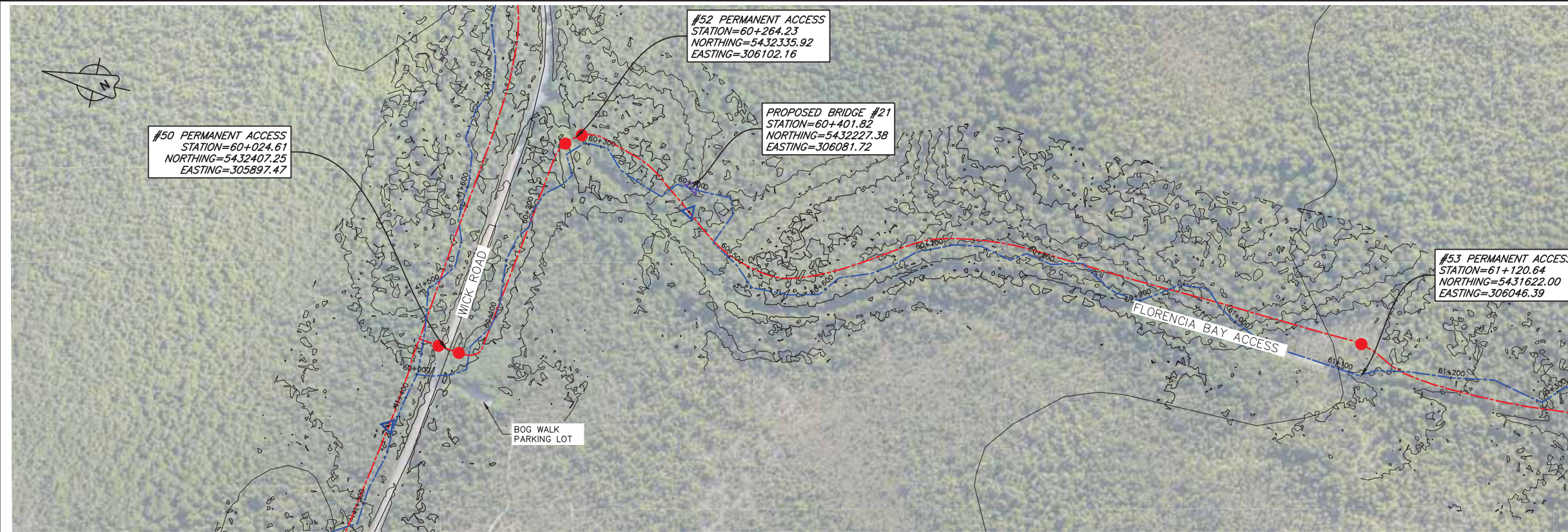
Regional Manager, Architectural and Engineering Services
Gestionnaire régionale, Services d'architecture et de génie, TPSGC
PREETIPAL PAUL

Drawing title/Titre du dessin
PACIFIC TRAVERSE TRAIL
CLEARING PLAN

STA 42+000 TO STA 42+996

Project No./No. du projet R.081570.001	Sheet/Feuille C-25 OF 29	Revision no./La Révision no. 3
--	---------------------------------------	--



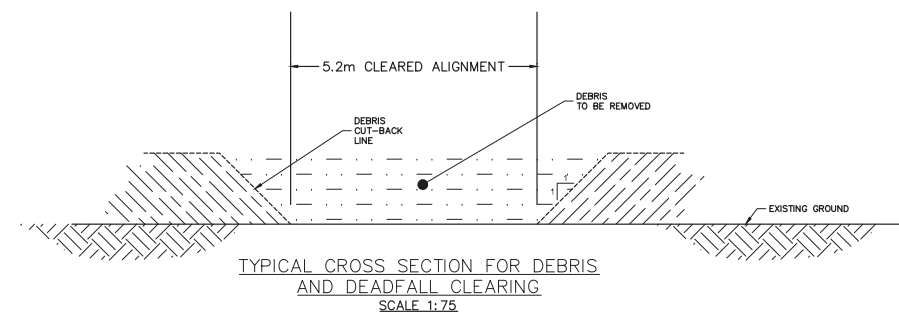


PACIFIC TRAVERSE TRAIL GENERAL CLEARING NOTES:

- SURVEY DATA IS BASED UPON THE UTM NAD83 COORDINATE SYSTEM.
- THE CONTRACTOR SHALL CLEAR ALL TREES, BRANCHES, AND BRUSH FROM THE 5.2m WIDE ALIGNMENT EXCEPT WHERE SPECIFIED.
- ALL STUMPS REMAINING SHALL BE CUT TO WITHIN 150mm OF THE GROUND.
- MATERIAL OVER 200mm DIAMETER AND NOT DESIGNATED FOR SALVAGE SHALL BE LAID IN THE FOREST, OVER 5m FROM THE TRAIL CLEARING, AND IN FULL CONTACT WITH THE GROUND.
- MATERIAL OVER 200mm DIAMETER DESIGNATED FOR SALVAGE SHALL BE REMOVED AND STORED IN COMBERS BEACH PARKING LOT.
- EXISTING FALLEN GROUND DEBRIS SHALL BE CLEARED FROM THE 5.2m WIDE ALIGNMENT AND SLOPING AWAY FROM THE TRAIL AT A 1:1 (SEE TYPICAL CROSS SECTION).
- DANGER TREES SHALL BE FELLED BY THE CONTRACTOR AND REMOVED.
- THE CONTRACTOR SHALL SUPPLY TRAFFIC CONTROL (SIGNING, FLAGGERS) ON ROADS AND HIGHWAYS WHEN WORKING ADJACENT TO HIGHWAYS.
- THE CONTRACTOR SHALL ADHERE TO ALL ENVIRONMENTAL REGULATIONS AS SPECIFIED IN THE CONTRACT.
- NO DEBRIS OR EQUIPMENT SHALL BE DEPOSITED INTO STANDING OR RUNNING WATER.
- THE TRAIL ALIGNMENT SHOWN IS APPROXIMATE WITH FINAL ALIGNMENT ESTABLISHED IN THE FIELD BY THE DEPARTMENTAL REPRESENTATIVE.

PRELIMINARY ALIGNMENT PROFILE
1:2000H & 1:200V

- LEGEND**
- PRELIMINARY ALIGNMENT
 - FLAGGED ALIGNMENT
 - TYPE A ELEVATED SECTION (UPDATED)
 - TYPE B ELEVATED SECTION (UPDATED)
 - PROPOSED RETAINING WALL (UPDATED)
 - ▲ PRELIMINARY BRIDGE LOCATION
 - SURVEYED BRIDGE LOCATION
 - ACCESS CONTROL GATE
 - ▼ TEMP ACCESS SURVEYED LOCATION



Revision/Revisions	Description/Description	Date/Date
5	---	---
4	---	---
3	ISSUED FOR TENDER REVIEW	05/12/2016
2	ISSUED FOR TENDER REVIEW	23/11/2016
1	ISSUED FOR TENDER REVIEW	20/09/2016
0	50% SUBMISSION	15/08/2016

Client/client
Parks Canada / L'Agence Parcs Canada
 Western and Northern Region / Ouest et Nord du Canada

Project title/Titre du projet
TOFINO, BC
PACIFIC RIM NATIONAL PARK RESERVE
PACIFIC TRAVERSE TRAIL

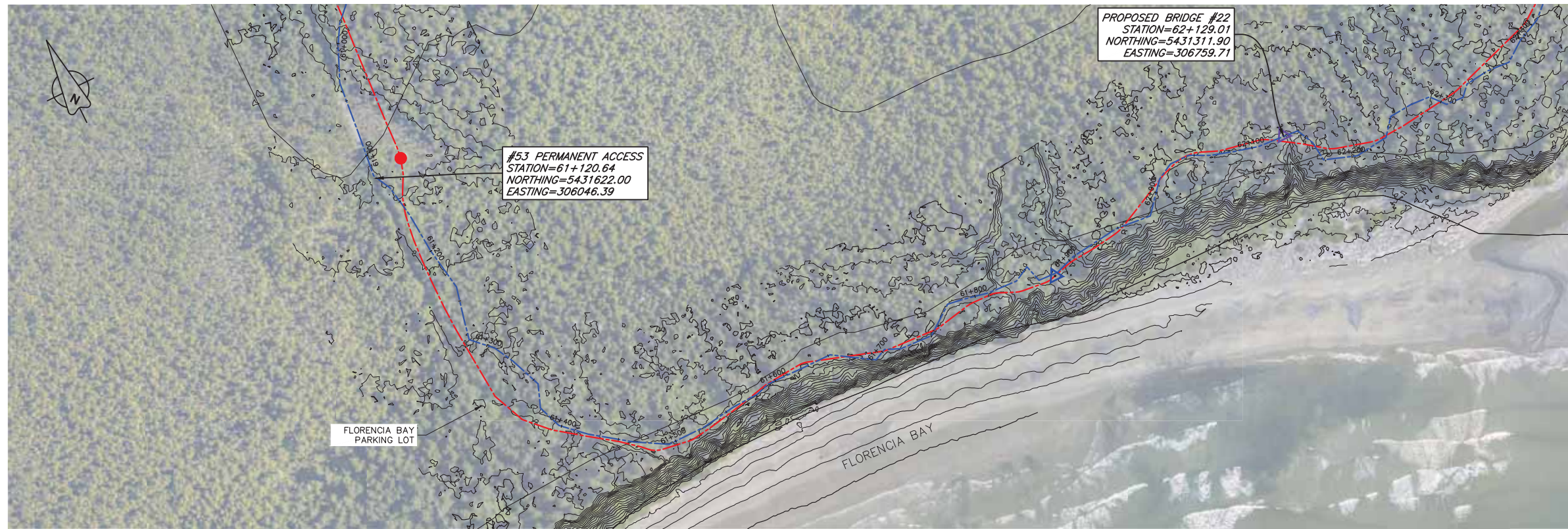
Consultant Signature Only
 Designed by/Concept par
 DON CHALMERS / 2016-11
 Drawn by/Dessiné par
 DAVID COX / 2016-11
 PWGSC Project Manager/Administrateur de Projets TPSGC
 TOM DUNPHY
 Regional Manager, Architectural and Engineering Services
 Gestionnaire régionale, Services d'architecture et de génie, TPSGC
 PREETIPAL PAUL

Drawing title/Titre du dessin
PACIFIC TRAVERSE TRAIL
CLEARING PLAN
 STA 60+000 TO STA 61+000

Project No./No. du projet	Sheet/Feuille	Revision no./La Révision no.
R.081570.001	C-26 OF 29	3

O:\T\A\03271 - PWGSC - 2016-10-PACIFIC TRAVERSE TRAIL\WORK\03271-PT-SHEETS 23-28_C-26.DWG PLOTTED ON 2016/12/05 2:19pm BY P00476Z



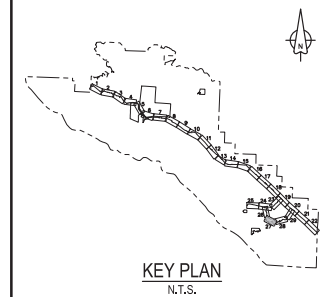
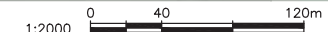


PROPOSED BRIDGE #22
STATION=62+129.01
NORTHING=5431311.90
EASTING=306759.71

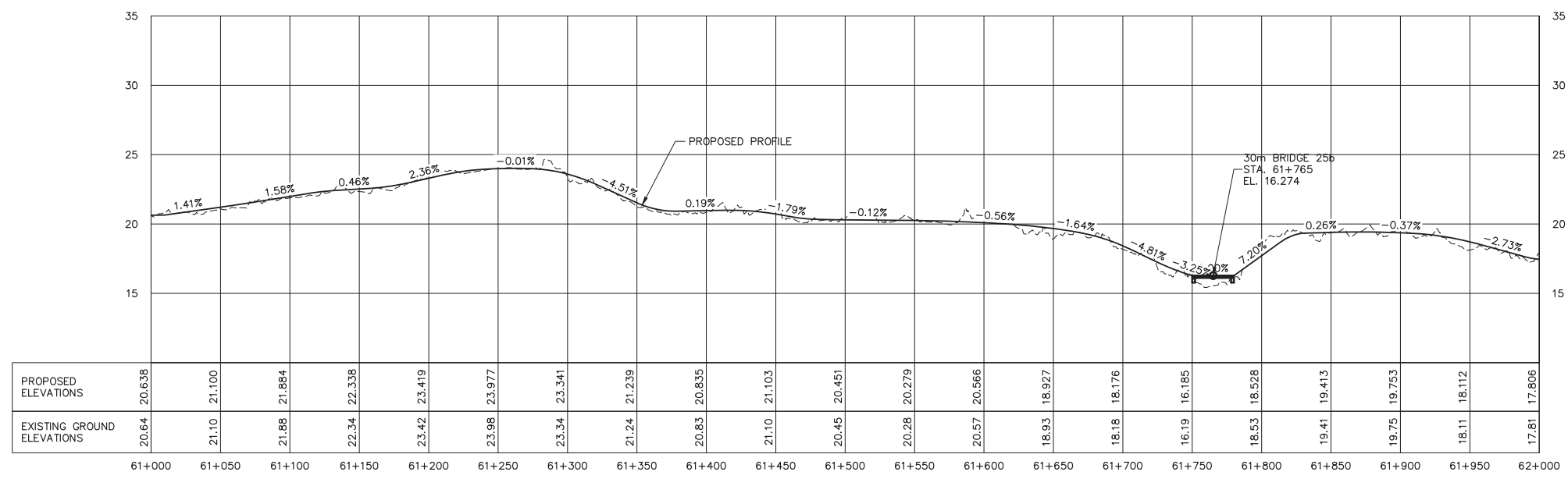
#53 PERMANENT ACCESS
STATION=61+120.64
NORTHING=5431622.00
EASTING=306046.39

FLORENCIA BAY
PARKING LOT

PLAN
1:2000



KEY PLAN
N.T.S.



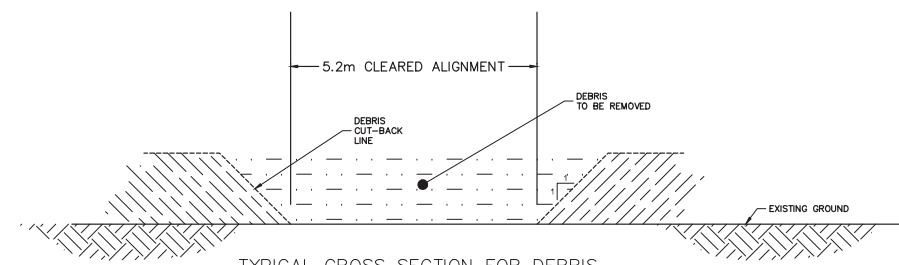
PRELIMINARY ALIGNMENT PROFILE
1:2000H & 1:200V

PACIFIC TRAVERSE TRAIL GENERAL CLEARING NOTES:

- SURVEY DATA IS BASED UPON THE UTM NAD83 COORDINATE SYSTEM.
- THE CONTRACTOR SHALL CLEAR ALL TREES, BRANCHES, AND BRUSH FROM THE 5.2m WIDE ALIGNMENT EXCEPT WHERE SPECIFIED.
- ALL STUMPS REMAINING SHALL BE CUT TO WITHIN 150mm OF THE GROUND.
- MATERIAL OVER 200mm DIAMETER AND NOT DESIGNATED FOR SALVAGE SHALL BE LAID IN THE FOREST, OVER 5m FROM THE TRAIL CLEARING, AND IN FULL CONTACT WITH THE GROUND.
- MATERIAL OVER 200mm DIAMETER DESIGNATED FOR SALVAGE SHALL BE REMOVED AND STORED IN COMBERS BEACH PARKING LOT.
- EXISTING FALLEN GROUND DEBRIS SHALL BE CLEARED FROM THE 5.2m WIDE ALIGNMENT AND SLOPING AWAY FROM THE TRAIL AT A 1:1 (SEE TYPICAL CROSS SECTION).
- DANGER TREES SHALL BE FELLED BY THE CONTRACTOR AND REMOVED.
- THE CONTRACTOR SHALL SUPPLY TRAFFIC CONTROL (SIGNING, FLAGGERS) ON ROADS AND HIGHWAYS WHEN WORKING ADJACENT TO HIGHWAYS.
- THE CONTRACTOR SHALL ADHERE TO ALL ENVIRONMENTAL REGULATIONS AS SPECIFIED IN THE CONTRACT.
- NO DEBRIS OR EQUIPMENT SHALL BE DEPOSITED INTO STANDING OR RUNNING WATER.
- THE TRAIL ALIGNMENT SHOWN IS APPROXIMATE WITH FINAL ALIGNMENT ESTABLISHED IN THE FIELD BY THE DEPARTMENTAL REPRESENTATIVE.

LEGEND

- PRELIMINARY ALIGNMENT
- FLAGGED ALIGNMENT
- TYPE A ELEVATED SECTION (UPDATED)
- TYPE B ELEVATED SECTION (UPDATED)
- PROPOSED RETAINING WALL (UPDATED)
- ▲ PRELIMINARY BRIDGE LOCATION
- SURVEYED BRIDGE LOCATION
- ACCESS CONTROL GATE
- ▼ TEMP ACCESS SURVEYED LOCATION



TYPICAL CROSS SECTION FOR DEBRIS AND DEADFALL CLEARING
SCALE 1:75

Revision/Revisions	Description/Description	Date/Date
5	---	---
4	---	---
3	ISSUED FOR TENDER REVIEW	05/12/2016
2	ISSUED FOR TENDER REVIEW	23/11/2016
1	ISSUED FOR TENDER REVIEW	30/09/2016
0	50% SUBMISSION	15/08/2016

Client/client	Parks Canada Agency Western and Northern Region	L'Agence Parcs Canada Ouest et Nord du Canada
---------------	--	--

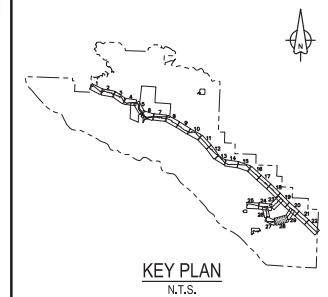
Project title/Titre du projet
TOFINO, BC

**PACIFIC RIM NATIONAL PARK RESERVE
PACIFIC TRAVERSE TRAIL**

Consultant Signature Only		
Designed by/Concept par DON CHALMERS / 2016-11		
Drawn by/Dessiné par DAVID COX / 2016-11		
PWGSC Project Manager/Administrateur de Projets TPSGC TOM DUNPHY		
Regional Manager, Architectural and Engineering Services Gestionnaire régionale, Services d'architecture et de génie, TPSGC PREETIPAL PAUL		
Drawing title/Titre du dessin PACIFIC TRAVERSE TRAIL CLEARING PLAN		
STA 61+000 TO STA 62+000		
Project No./No. du projet R.081570.001	Sheet/Feuille C-27 OF 29	Revision no./La Révision no. 3

0:\T\08271 - PWGSC - 2016 - PACIFIC TRAVERSE TRAIL\WORKS\08271-PT-SHEETS 23-28_C\LDWG_PLOTTED_ON_2016/02/08_2:27pm_BY_P004762





Revision/	Description/Description	Date/Date
5	----	----
4	----	----
3	ISSUED FOR TENDER REVIEW	05/12/2016
2	ISSUED FOR TENDER REVIEW	23/11/2016
1	ISSUED FOR TENDER REVIEW	20/09/2014
0	50% SUBMISSION	15/08/2016

Client/client	
Parks Canada Agency Western and Northern Region	L'Agence Parcs Canada Ouest et Nord du Canada

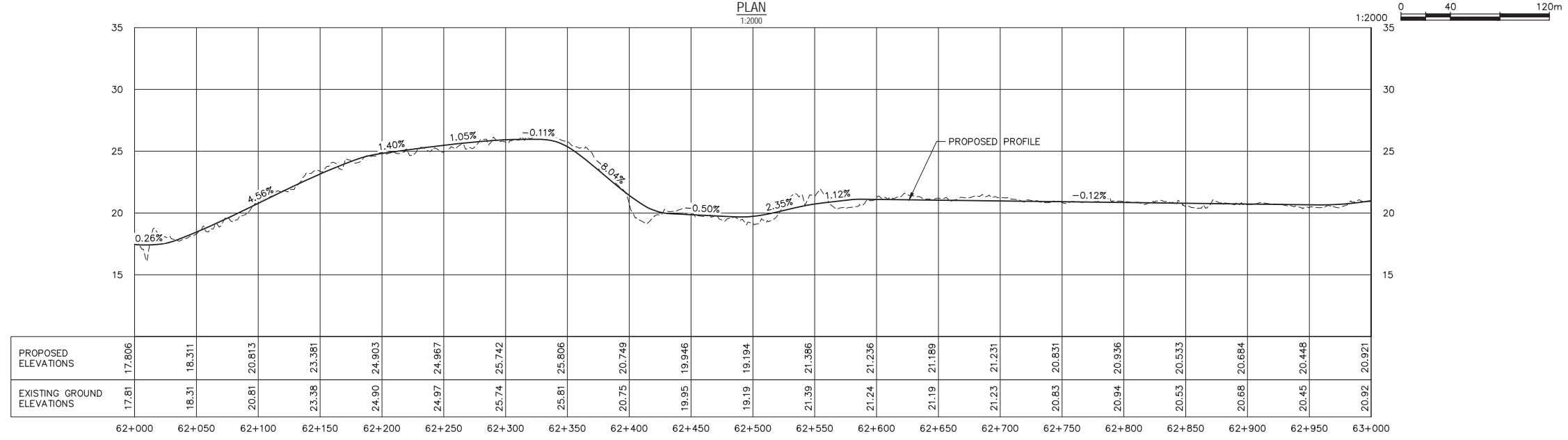
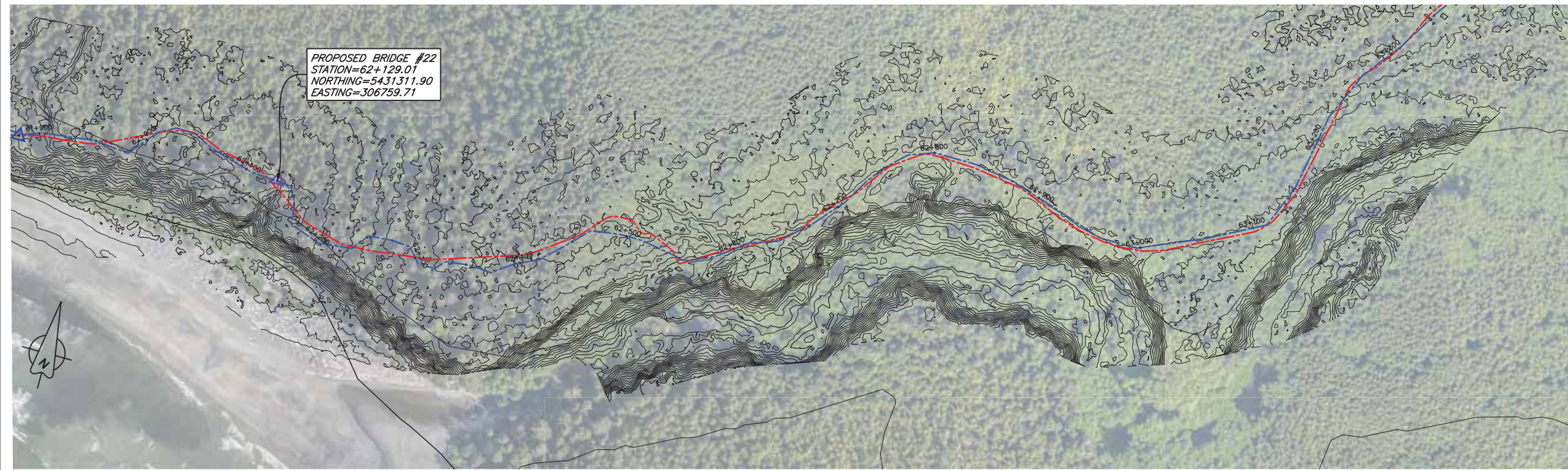
Project title/Titre du projet
TOFINO, BC
PACIFIC RIM NATIONAL PARK RESERVE
PACIFIC TRAVERSE TRAIL

Consultant Signature Only

Designed by/Concept par
 DON CHALMERS / 2016-11
 Drawn by/Dessiné par
 DAVID COX / 2016-11
 PWGSC Project Manager/Administrateur de Projets TPSGC
 TOM DUNPHY
 Regional Manager, Architectural and Engineering Services
 Gérant régional, Services d'architecture et de génie, TPSGC
 PREEETIPAL PAUL

Drawing title/Titre du dessin
PACIFIC TRAVERSE TRAIL
CLEARING PLAN
 STA 62+000 TO STA 63+000

Project No./No. du projet R.081570.001	Sheet/Fauille C-28 OF 29	Revision no./La Révision no. 3
---	---------------------------------------	--



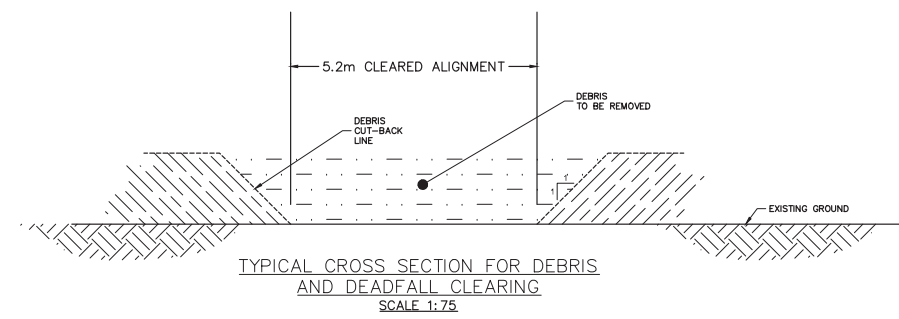
PRELIMINARY ALIGNMENT PROFILE
 1:2000H & 1:200V

PACIFIC TRAVERSE TRAIL GENERAL CLEARING NOTES:

- SURVEY DATA IS BASED UPON THE UTM NAD83 COORDINATE SYSTEM.
- THE CONTRACTOR SHALL CLEAR ALL TREES, BRANCHES, AND BRUSH FROM THE 5.2m WIDE ALIGNMENT EXCEPT WHERE SPECIFIED.
- ALL STUMPS REMAINING SHALL BE CUT TO WITHIN 150mm OF THE GROUND.
- MATERIAL OVER 200mm DIAMETER AND NOT DESIGNATED FOR SALVAGE SHALL BE LAID IN THE FOREST, OVER 5m FROM THE TRAIL CLEARING, AND IN FULL CONTACT WITH THE GROUND.
- MATERIAL OVER 200mm DIAMETER DESIGNATED FOR SALVAGE SHALL BE REMOVED AND STORED IN COMBERS BEACH PARKING LOT.
- EXISTING FALLEN GROUND DEBRIS SHALL BE CLEARED FROM THE 5.2m WIDE ALIGNMENT AND SLOPING AWAY FROM THE TRAIL AT A 1:1 (SEE TYPICAL CROSS SECTION).
- DANGER TREES SHALL BE FELLED BY THE CONTRACTOR AND REMOVED.
- THE CONTRACTOR SHALL SUPPLY TRAFFIC CONTROL (SIGNING, FLAGGERS) ON ROADS AND HIGHWAYS WHEN WORKING ADJACENT TO HIGHWAYS.
- THE CONTRACTOR SHALL ADHERE TO ALL ENVIRONMENTAL REGULATIONS AS SPECIFIED IN THE CONTRACT.
- NO DEBRIS OR EQUIPMENT SHALL BE DEPOSITED INTO STANDING OR RUNNING WATER.
- THE TRAIL ALIGNMENT SHOWN IS APPROXIMATE WITH FINAL ALIGNMENT ESTABLISHED IN THE FIELD BY THE DEPARTMENTAL REPRESENTATIVE.

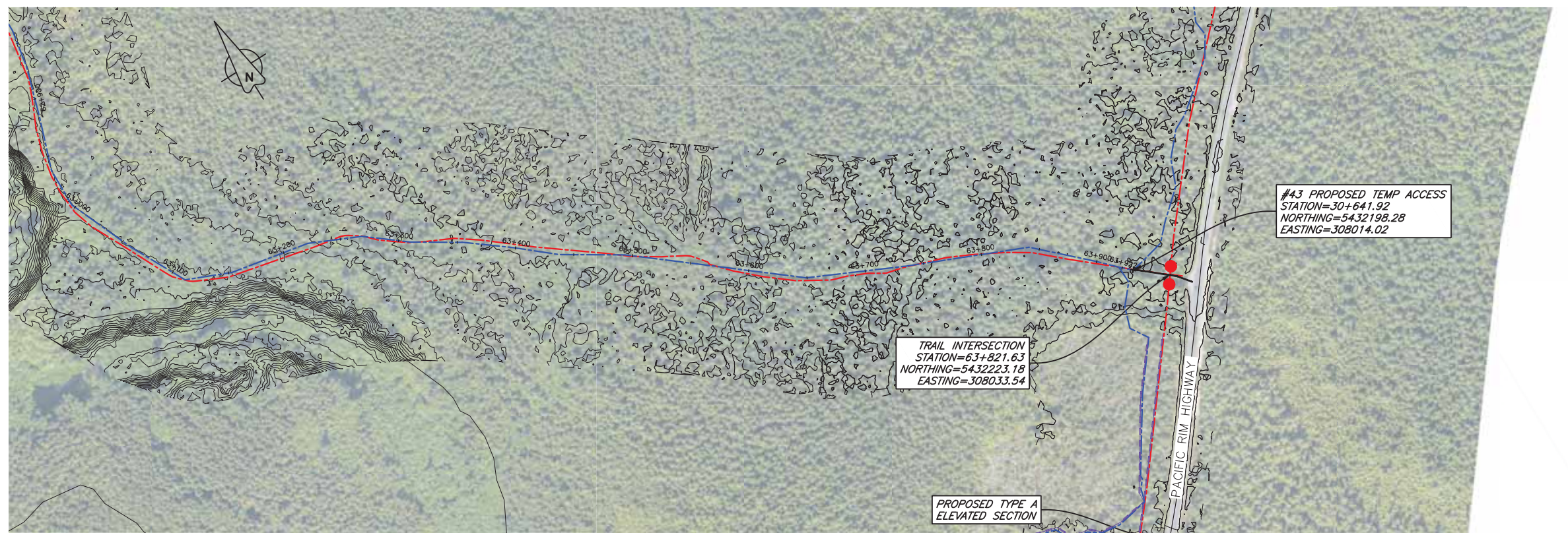
LEGEND

- PRELIMINARY ALIGNMENT
- FLAGGED ALIGNMENT
- TYPE A ELEVATED SECTION (UPDATED)
- TYPE B ELEVATED SECTION (UPDATED)
- PROPOSED RETAINING WALL (UPDATED)
- PRELIMINARY BRIDGE LOCATION
- SURVEYED BRIDGE LOCATION
- ACCESS CONTROL GATE
- TEMP ACCESS SURVEYED LOCATION



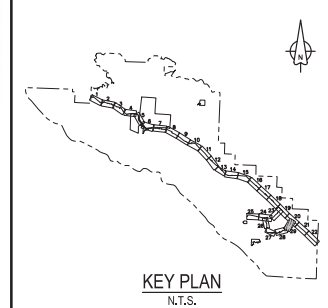
O:\1\4\03271 - PWGSC - 2016 - TOFINO - PACIFIC TRAVERSE TRAIL\WORKS\03271-PT-02ETS-23-28_C-AS.DWG PLOTTED ON 2016/12/08 2:22pm BY 60047KZ



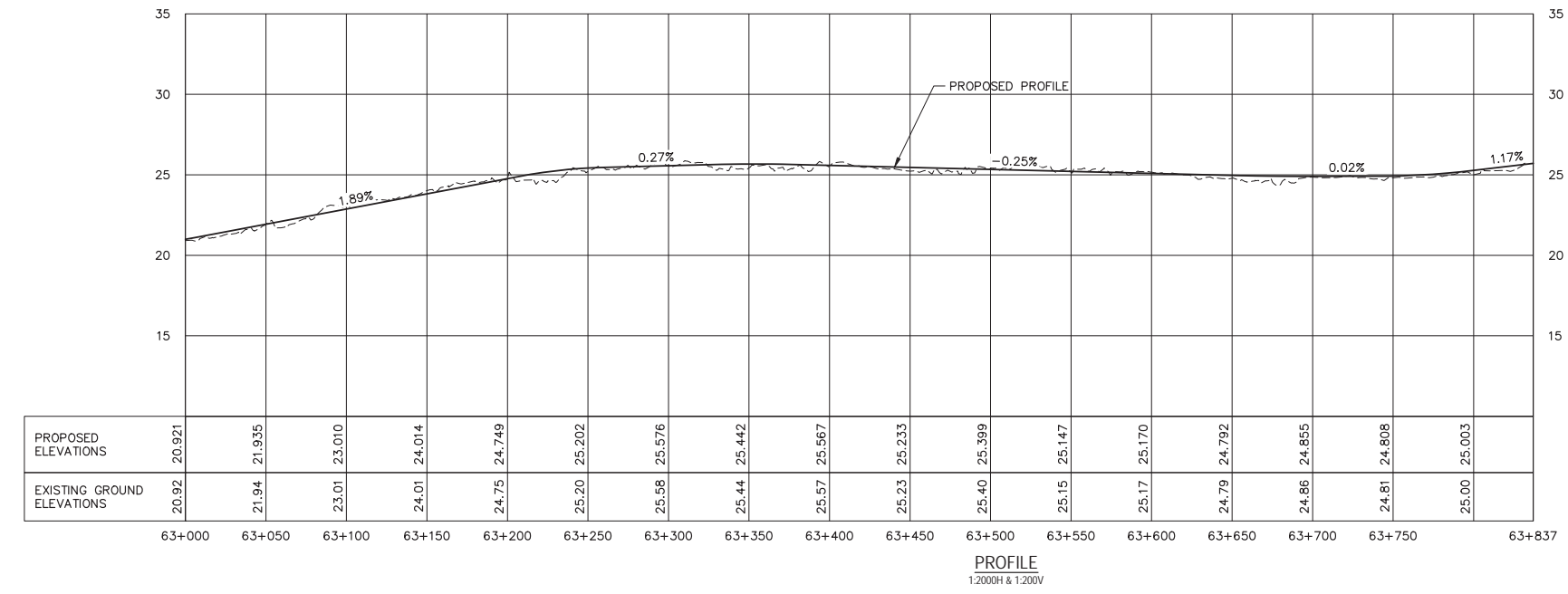


PLAN
1:2000

0 40 120m
1:2000



KEY PLAN
N.T.S.



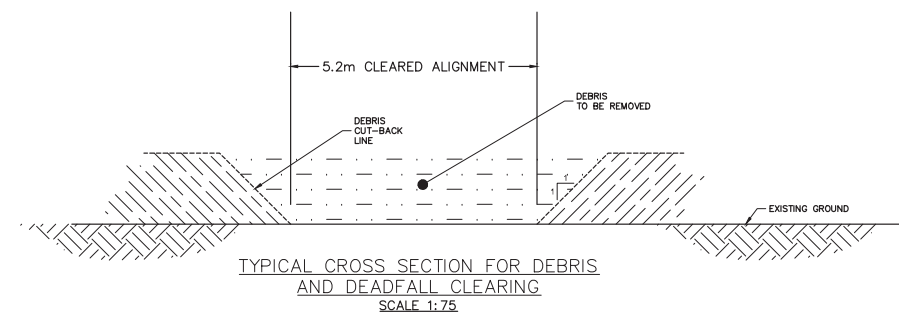
PROFILE
1:2000H & 1:200V

PACIFIC TRAVERSE TRAIL GENERAL CLEARING NOTES:

- SURVEY DATA IS BASED UPON THE UTM NAD83 COORDINATE SYSTEM.
- THE CONTRACTOR SHALL CLEAR ALL TREES, BRANCHES, AND BRUSH FROM THE 5.2m WIDE ALIGNMENT EXCEPT WHERE SPECIFIED.
- ALL STUMPS REMAINING SHALL BE CUT TO WITHIN 150mm OF THE GROUND.
- MATERIAL OVER 200mm DIAMETER AND NOT DESIGNATED FOR SALVAGE SHALL BE LAID IN THE FOREST, OVER 5m FROM THE TRAIL CLEARING, AND IN FULL CONTACT WITH THE GROUND.
- MATERIAL OVER 200mm DIAMETER DESIGNATED FOR SALVAGE SHALL BE REMOVED AND STORED IN COMBERS BEACH PARKING LOT.
- EXISTING FALLEN GROUND DEBRIS SHALL BE CLEARED FROM THE 5.2m WIDE ALIGNMENT AND SLOPING AWAY FROM THE TRAIL AT A 1:1 (SEE TYPICAL CROSS SECTION).
- DANGER TREES SHALL BE FELLED BY THE CONTRACTOR AND REMOVED.
- THE CONTRACTOR SHALL SUPPLY TRAFFIC CONTROL (SIGNING, FLAGGERS) ON ROADS AND HIGHWAYS WHEN WORKING ADJACENT TO HIGHWAYS.
- THE CONTRACTOR SHALL ADHERE TO ALL ENVIRONMENTAL REGULATIONS AS SPECIFIED IN THE CONTRACT.
- NO DEBRIS OR EQUIPMENT SHALL BE DEPOSITED INTO STANDING OR RUNNING WATER.
- THE TRAIL ALIGNMENT SHOWN IS APPROXIMATE WITH FINAL ALIGNMENT ESTABLISHED IN THE FIELD BY THE DEPARTMENTAL REPRESENTATIVE.

LEGEND

- PRELIMINARY ALIGNMENT
- FLAGGED ALIGNMENT
- TYPE A ELEVATED SECTION (UPDATED)
- TYPE B ELEVATED SECTION (UPDATED)
- PROPOSED RETAINING WALL (UPDATED)
- ▲ PRELIMINARY BRIDGE LOCATION
- ▲ SURVEYED BRIDGE LOCATION
- ACCESS CONTROL GATE
- ▼ TEMP ACCESS SURVEYED LOCATION



5	----	----
4	----	----
3	ISSUED FOR TENDER REVIEW	05/12/2016
2	ISSUED FOR TENDER REVIEW	23/11/2016
1	ISSUED FOR TENDER REVIEW	20/09/2016
0	50% SUBMISSION	15/08/2016

Revision/Revisions	Description/Description	Date/Date
Client/client		
	Parks Canada Agency	L'Agence Parcs Canada
	Western and Northern Region	Ouest et Nord du Canada

Project title/Titre du projet
TOFINO, BC

PACIFIC RIM NATIONAL PARK RESERVE
PACIFIC TRAVERSE TRAIL

Consultant Signature Only

Designed by/Concept par
DON CHLMERS / 2016-11

Drawn by/Dessiné par
DAVID COX / 2016-11

PWOSC Project Manager/Administrateur de Projets TPSGC
TOM DUNPHY

Regional Manager, Architectural and Engineering Services
Gestionnaire régionale, Services d'architecture et de génie, TPSGC
PREEETIPAL PAUL

Drawing title/Titre du dessin
PACIFIC TRAVERSE TRAIL
CLEARING PLAN

STA 63+000 TO STA 63+837

Project No./No. du projet R.081570.001	Sheet/Feuille C-29 OF 29	Revision no./La Révision no. 3
--	---------------------------------------	--

O:\T\081570 - PWOSC - 2016 - TOFINO - PACIFIC TRAVERSE TRAIL\DWG\081570-PT-001-29.dwg PLOTTED ON 2016/12/05 2:24pm BY P004726

