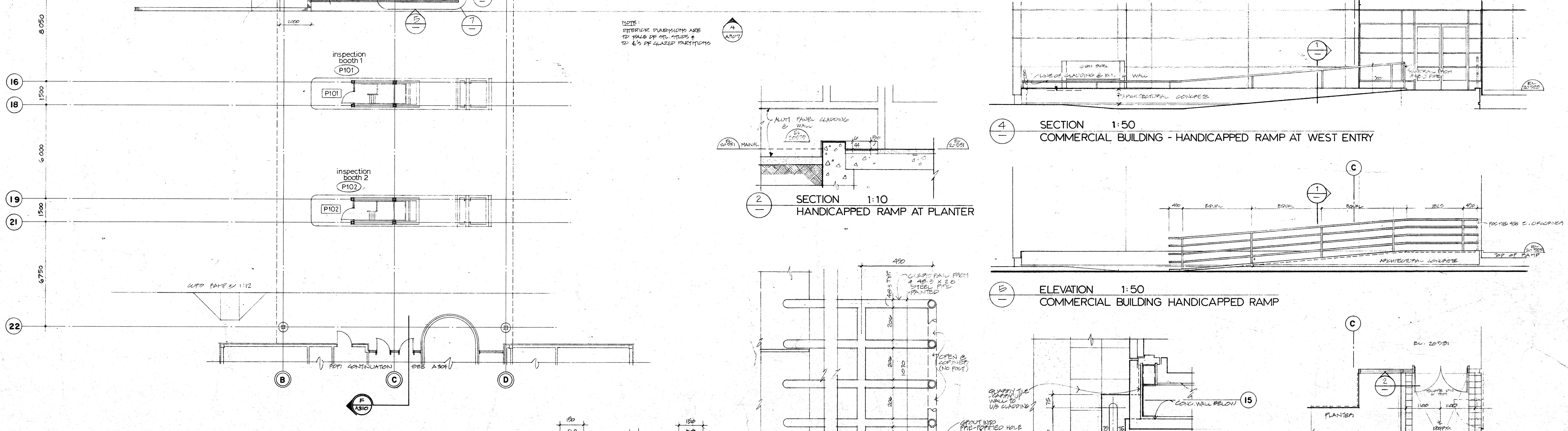
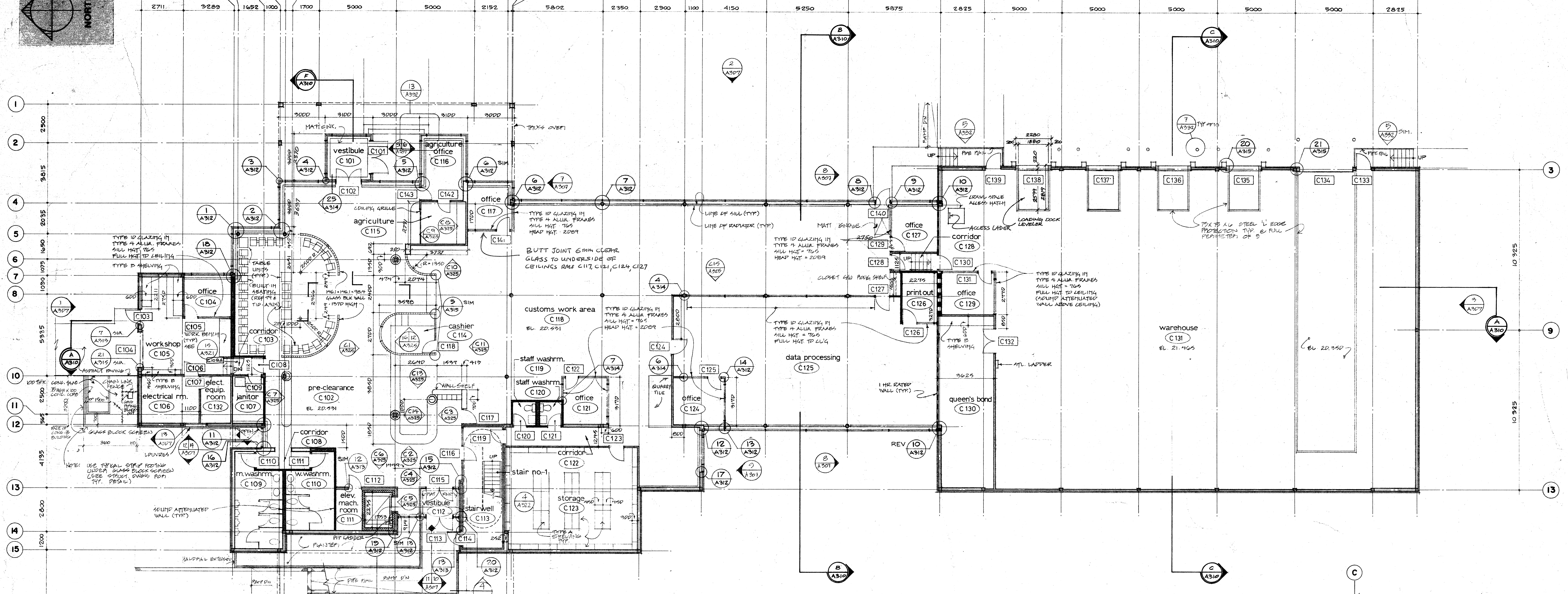


CA CB CC CD CE PA C PH D CE E CF CG CH CJ CK CL CM CN CO CP CQ CR CS CT



COMMERCIAL BUILDING / PRIMARY INSPECTION PLAN 1:100

SECTION 1:10 HANDICAPPED RAMP

ELEVATION / SECTION 1:10 HANDICAPPED RAMP GUARD RAIL

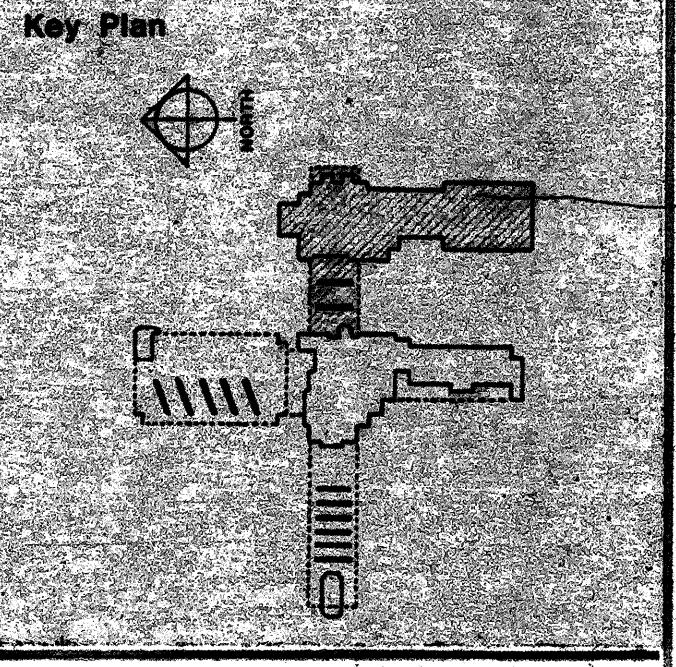
PLAN DETAIL 1:10 HANDICAPPED RAMP AT WALL

PARTIAL PLAN 1:50 COMMERCIAL BUILDING HANDICAPPED RAMP

Public Works Travaux publics Canada Canada PACIFIC REGION

Architects Toby Russell Buckwell & Partners, Architects

Consultants Transportation and Site Underwood McAllen Ltd. Structural and Mechanical McKenzie Snowball Skelton & Associates Ltd. Electrical AME Engineering Ltd. Landscape Justice Webb and Vincent Ltd.



AS BUILT This drawing has been revised to show this building 'As Built' and must be signed by the Contractor. Date: _____

revision	date
A	
B	
C	

PACIFIC HIGHWAY BORDER CROSSING Phase 3 COMMERCIAL BUILDING FLOOR PLAN DETAILS

designed	lbd.	copy
drawn	MT	design
checked	TCM	examined
date	June 24/04	
approved		approved
date		
Tender	K.P. Gelheide	Submission
PWC Project Manager	Administrateur de projets TTC	
drawing no.	087501	
no. du dessin	A 303	