



RETURN BIDS TO:
RETOURNER LES SOUMISSIONS À:
Bid Receiving Public Works and Government
Services Canada/Réception des soumissions Travaux
publics et Services gouvernementaux Canada
Pacific Region
401 - 1230 Government Street
Victoria, B.C.
V8W 3X4
Bid Fax: (250) 363-3344

SOLICITATION AMENDMENT

MODIFICATION DE L'INVITATION

The referenced document is hereby revised; unless otherwise indicated, all other terms and conditions of the Solicitation remain the same.

Ce document est par la présente révisé; sauf indication contraire, les modalités de l'invitation demeurent les mêmes.

Comments - Commentaires

Vendor/Firm Name and Address
Raison sociale et adresse du
fournisseur/de l'entrepreneur

Issuing Office - Bureau de distribution
Public Works and Government Services Canada -
Pacific Region
401 - 1230 Government Street
Victoria, B. C.
V8W 3X4

Title - Sujet Mountain Kiosks for Seismic Equip	
Solicitation No. - N° de l'invitation 23490-170668/A	Amendment No. - N° modif. 004
Client Reference No. - N° de référence du client 23490-170668	Date 2016-12-12
GETS Reference No. - N° de référence de SEAG PW-\$VIC-249-7111	
File No. - N° de dossier VIC-6-39133 (249)	CCC No./N° CCC - FMS No./N° VME
Solicitation Closes - L'invitation prend fin at - à 02:00 PM on - le 2016-12-27	
Time Zone Fuseau horaire Pacific Standard Time PST	
F.O.B. - F.A.B. Plant-Usine: <input type="checkbox"/> Destination: <input checked="" type="checkbox"/> Other-Autre: <input type="checkbox"/>	
Address Enquiries to: - Adresser toutes questions à: Cress, Christine	Buyer Id - Id de l'acheteur vic249
Telephone No. - N° de téléphone (250) 363-8442 ()	FAX No. - N° de FAX () -
Destination - of Goods, Services, and Construction: Destination - des biens, services et construction: DEPARTMENT OF NATURAL RESOURCES 9860 WEST SAANICH ROAD SIDNEY British Columbia V8L 5T5 Canada	

Instructions: See Herein

Instructions: Voir aux présentes

Delivery Required - Livraison exigée See Herein	Delivery Offered - Livraison proposée
Vendor/Firm Name and Address Raison sociale et adresse du fournisseur/de l'entrepreneur	
Telephone No. - N° de téléphone Facsimile No. - N° de télécopieur	
Name and title of person authorized to sign on behalf of Vendor/Firm (type or print) Nom et titre de la personne autorisée à signer au nom du fournisseur/ de l'entrepreneur (taper ou écrire en caractères d'imprimerie)	
Signature	Date

This Amendment 004 to the Solicitation is raised to address the following Bidder inquiries and to attach additional drawings to Appendix 1 to Annex "A".

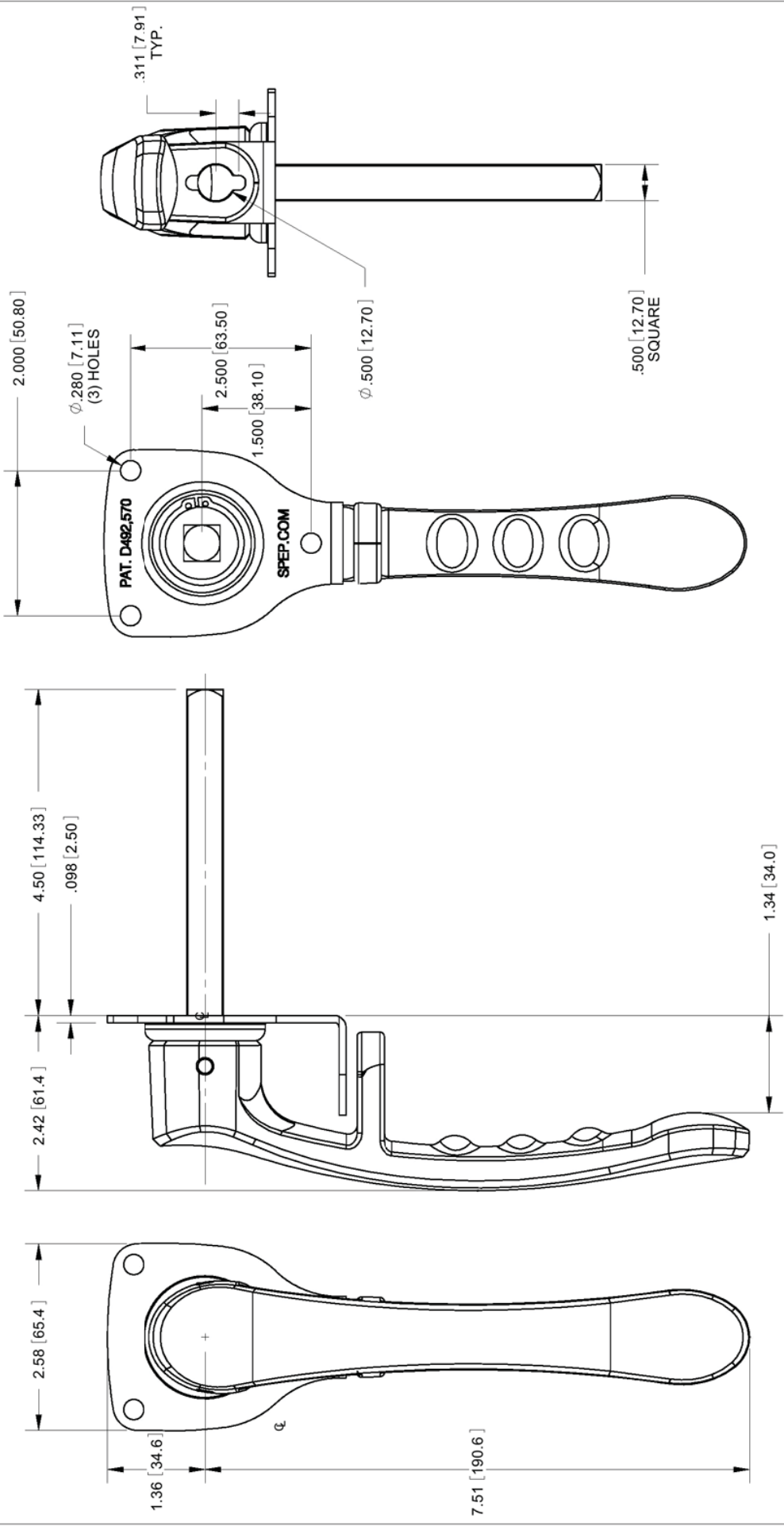
QUESTIONS:

1. For clarification, this RFQ is to supply completed units as detailed on drawing MTK204C?
2. Is the kiosk insulation to be fastened with Sikaflex 291 the same as the door insulation?
3. Can the ¾" good one side pressure treated plywood be substituted with regular ¾" pressure treated plywood or could we use standard ¾" GOS and treat it with wood preservative?
4. Are all parts supplied bare material with no paint or powder coat?
5. Some parts are detailed as a #4 finish which is typically for aesthetics. Can these parts be supplied with a standard bare material finish same as the rest of the parts?
6. Can you provide details for the diagonal strap support, Part number MTK110?
7. Does this enclosure need to be rated? (i.e. Nema 3R or some other rating)
8. Certifications were mentioned in the original RFP but I didn't see any specified. Does this kiosk need to meet any certifications?
9. Does the welding need to be CWB certified?

ANSWERS:

- 1) Yes, the request is for complete assembled units per MTK204C and related drawings.
- 2) Yes, Sikaflex 291 adhesive for all.
- 3) Either alternative is acceptable.
- 4) No special finish is required (mill finish)
- 5) No special finish is required (mill finish), in spite of the detail
- 6) See attached
- 7) No particular rating is required.
- 8) No technical certifications are required. The Bidder must build to the drawings only – no additional technical certifications are necessary.
- 9) No welding certification is required.

ALL OTHER TERMS AND CONDITIONS REMAIN UNCHANGED.



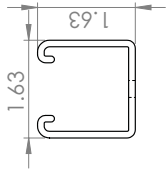
- NOTES:
- 1. PART IS ROHS COMPLIANT.
 - 2. DIMENSIONS IN BRACKETS ARE IN METRIC.

<div>SIERRA PACIFIC</div> <div>ENGINEERING AND PRODUCTS © SPEP.COM</div>				UNSPECIFIED TOLERANCES		MATERIAL: STAINLESS STEEL		PART NUMBER:
CONFIDENTIAL PROPRIETARY INFORMATION		PLOT DATE: 10/2/2009		ANGLES: ±3°		FINISH: PASSIVATED		DESCRIPTION: LARGE PADLOCKING L-HANDLE

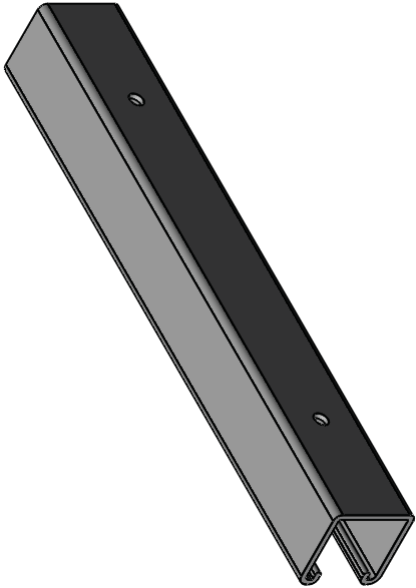
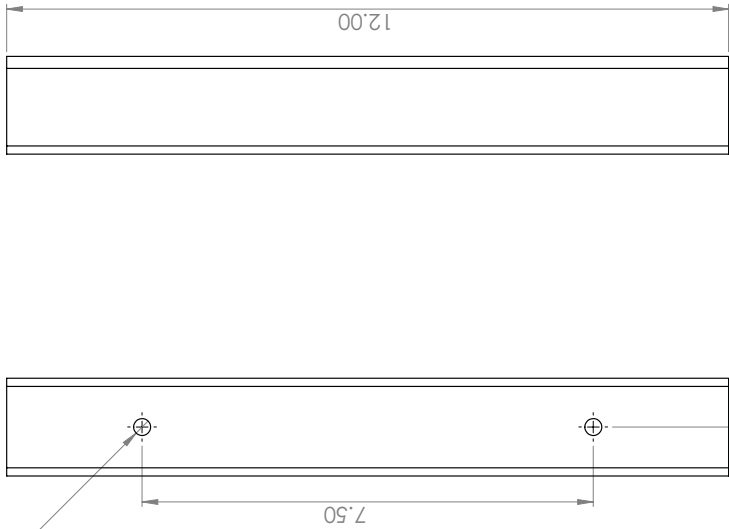
4 3 2 1

B

B



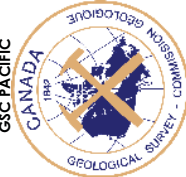


2 x Ø 0.28 THRU ALL



A

A

<div><div>PROPRIETARY AND CONFIDENTIAL</div><div>THE INFORMATION CONTAINED IN THIS DRAWING IS THE SOLE PROPERTY OF the Geological Survey of Canada (G.S.C.). ANY REPRODUCTION, IN WHOLE OR AS A WHOLE WITHOUT THE WRITTEN PERMISSION OF G.S.C. IS PROHIBITED.</div></div> <div><div></div><div>Natural Resources Canada</div></div> <div><div></div><div>Resources naturelles Canada</div></div>		UNLESS OTHERWISE SPECIFIED: DIMENSIONS ARE IN INCHES TOLERANCES: FRACTIONAL: 1/32" ANGULAR: MACH 0.1 BEND 0.1 TWO PLACE DECIMAL 0.005 THREE PLACE DECIMAL 0.001				DRAWN	NAME	DATE	PROJECT (GROUP)
	INTERPRET GEOMETRIC TOLERANCING PER ASME Y14.5-2009				DESIGN	D.J.P.	2016-09-15	(CHIS) Mountain Top Kiosk	
	MATERIAL FINISH				COMMENTS:				
	Stainless Steel				SIZE DWG. NO. REV				
	DO NOT SCALE DRAWING				B 3310T194 A-1.0				
					SCALE: 1:2 SHEET 1 OF 1				

1-5/8" x 1-5/8" x 12" STRUT
CHANNEL

4

3

2

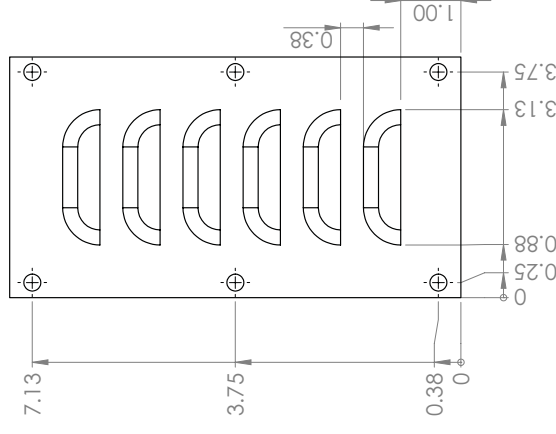
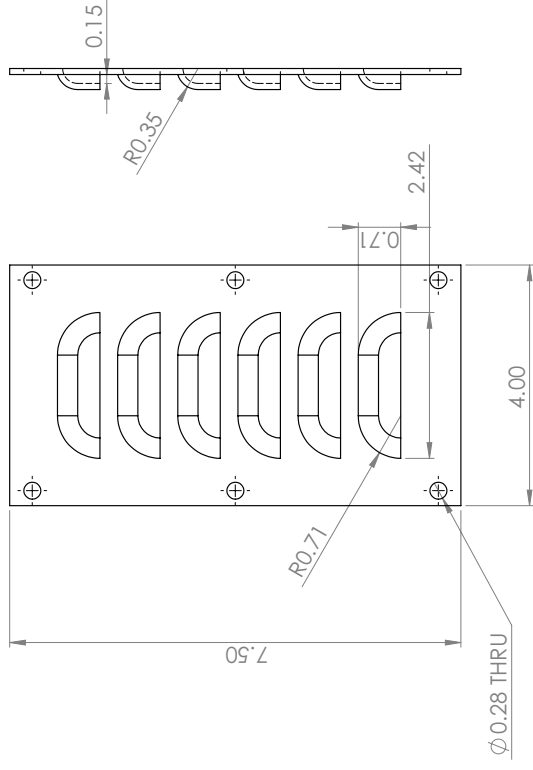
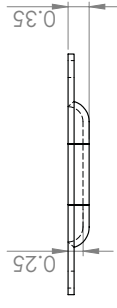
1

4

3

2

1





B

B

A

A

<div>PROPRIETARY AND CONFIDENTIAL</div> <div>THE INFORMATION CONTAINED IN THIS DRAWING IS THE SOLE PROPERTY OF the Geological Survey of Canada (G.S.C.). ANY REPRODUCTION IN PART OR AS A WHOLE WITHOUT THE WRITTEN PERMISSION OF G.S.C. IS PROHIBITED.</div>	<div><div><div>GSC PACIFIC</div><div>CANADA</div><div>1942</div><div>GEOLOGICAL SURVEY OF CANADA</div></div><div> Canada <small>EXTRAORDINARY ACHIEVEMENTS</small></div></div>	UNLESS OTHERWISE SPECIFIED:		NAME		DATE	PROJECT (GROUP) (CHIS) Mountaintop Kiosk	
		DIMENSIONS ARE IN <u>INCHES</u>		DRAWN	HOV	TITLE: Louver Cover plate		
		TOLERANCES:		DESIGN	HOV			
		FRACTIONAL: 1/32"						
		ANGULAR: MACH 0.1 BEND 0.1						
		TWO PLACE DECIMAL 0.005						
		THREE PLACE DECIMAL 0.001						
COMMENTS:				SIZE		DWG. NO.	REV	
						B	MTK 19206	A-1.0
						SCALE: 1:2		SHEET 1 OF 1

4

3

2

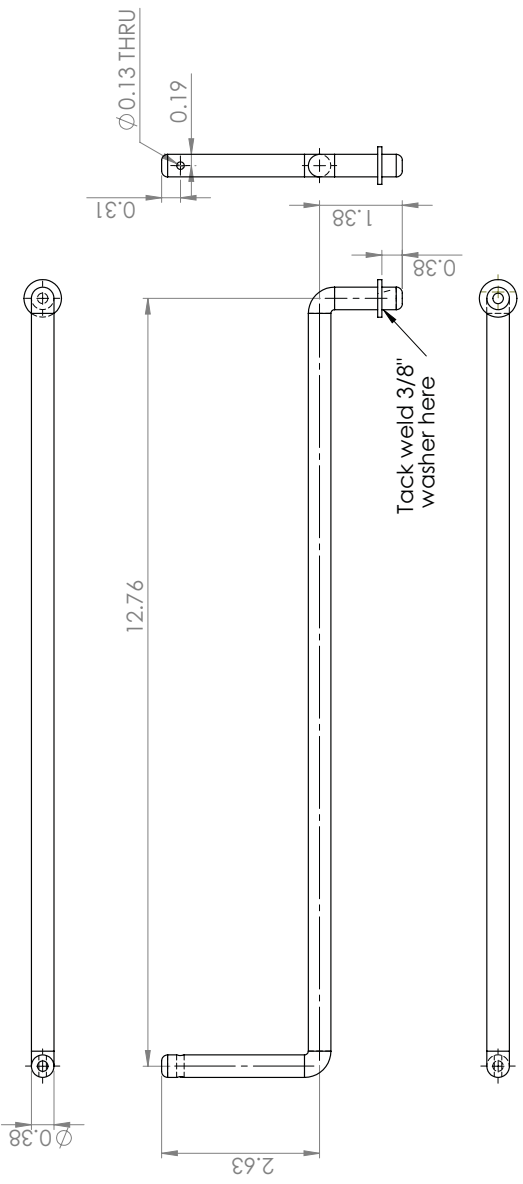
1

4

3

2

1





B

B

A

A

<div><div>PROPRIETARY AND CONFIDENTIAL</div><div><p>THE INFORMATION CONTAINED IN THIS DRAWING IS THE SOLE PROPERTY OF THE Geological Survey of Canada (G.S.C.). ANY REPRODUCTION IN WHOLE OR AS A WHOLE WITHOUT THE WRITTEN PERMISSION OF G.S.C. IS PROHIBITED.</p><div><div><div></div><div><div><div><div>Canada</div><div><small>GEOLOGICAL SURVEY OF CANADA</small></div></div></div></div></div></div></div></div>	UNLESS OTHERWISE SPECIFIED: DIMENSIONS ARE IN INCHES TOLERANCES: FRACTIONAL: 1/32" ANGULAR: MACH 0.1 BEND 0.1 TWO PLACE DECIMAL 0.005 THREE PLACE DECIMAL 0.001		DRAWN D.J.P.	DATE 2016-03-13	PROJECT (GROUP) (CHIS) Mountain Top Kiosk
	INTERPRET GEOMETRIC TOLERANCING PER ASME Y14.5-2009		DESIGN	D.J.P.	
	MATERIAL Stainless Steel				
	FINISH Architectural 4				
	COMMENTS: DO NOT SCALE DRAWING				
SIZE		DWG. NO.	REV		
B		MTK 157	A-1.0		
SCALE: 1:2		SHEET 1 OF 1			

4

3

2

1

