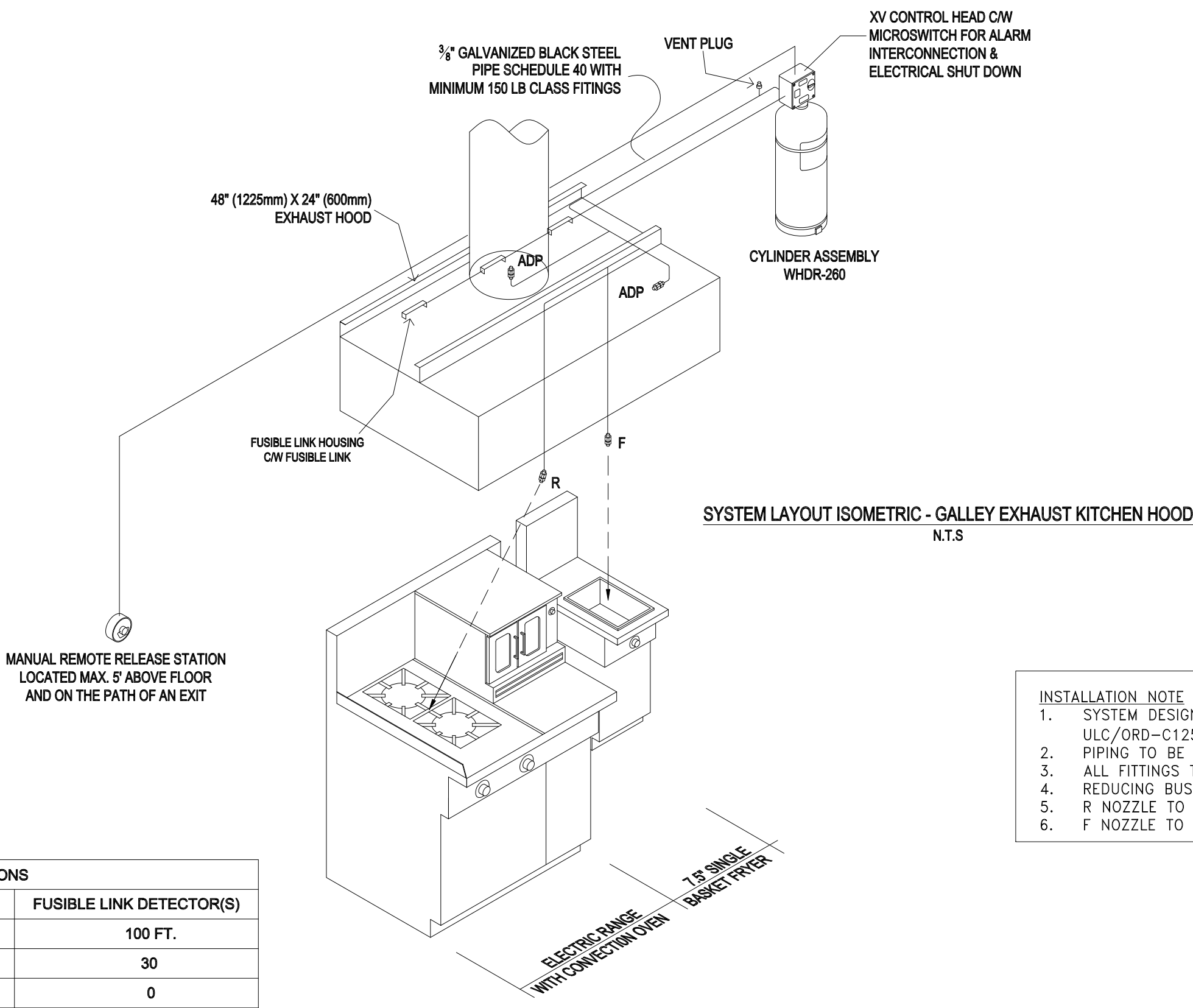
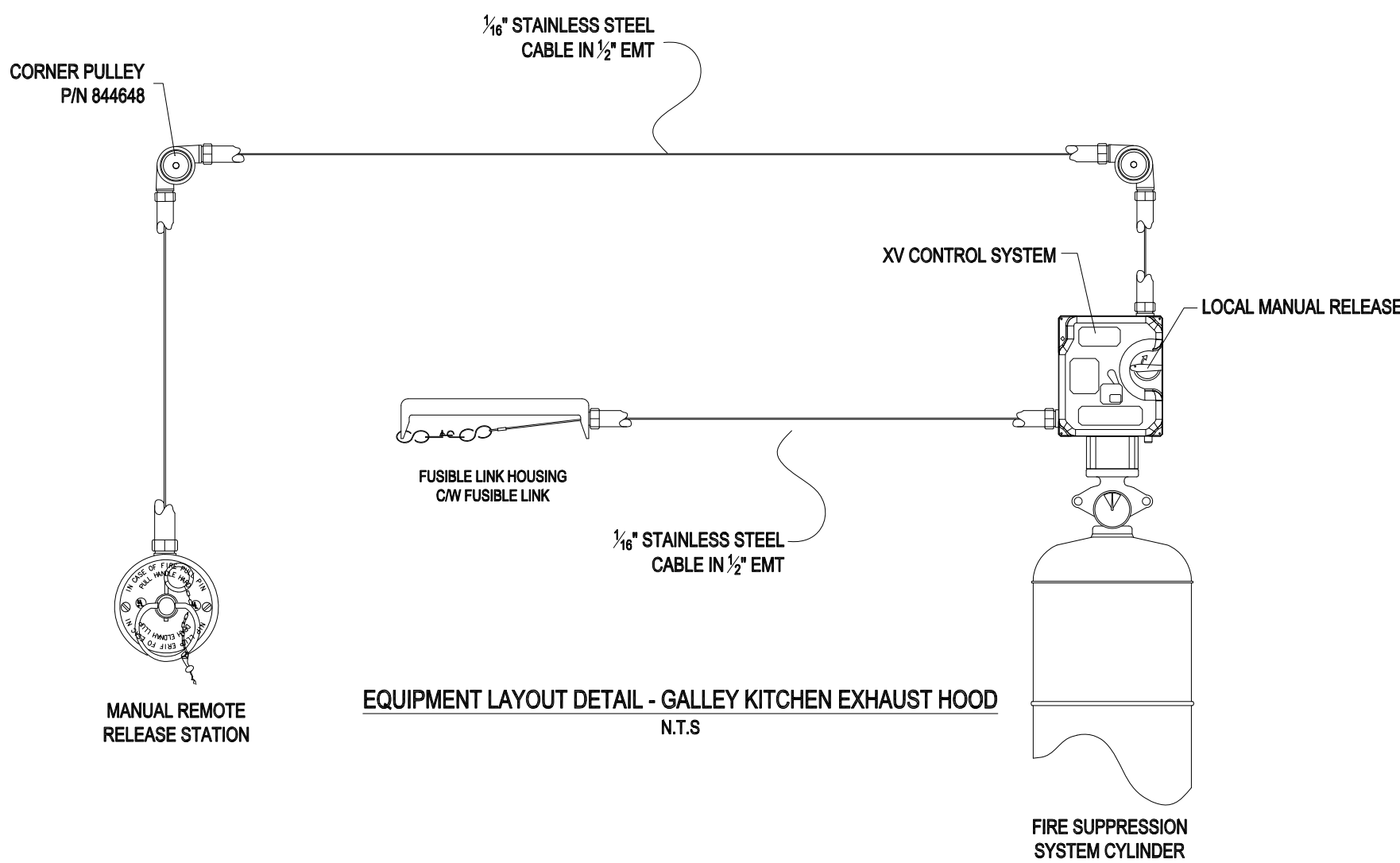


PLAN VIEW
GALLEY KITCHEN HOOD FIRE SUPPRESSION LAYOUT
SCALE 1:20

SYMBOL	DEVICE	QTY	FLOW NUMBER	TOTAL FLOW NUMBER
▽	ADP NOZZLE #87-120016-001	2	1	2
◇	F NOZZLE #87-120017-001	1	2	2
▼	R NOZZLE #87-120019-001	1	1	1
⌚	360°F FUSIBLE LINK	3		
●	PULL STATION	1	TOTAL	5

KITCHEN HOOD WET CHEMICAL FIRE SUPPRESSION SYSTEM		
PART NO.	DESCRIPTION	QTY
87-120002-001	WHDR - 260 CYLINDER AND VALVE ASSY WITH 2.6 GAL. OF WET AGENT	1
844908	DISCHARGE ADAPTER KIT	1
60-9196984-000	VENT PLUG	1
60-9197263-000	WHDR - 260 MOUNTING BRACKET	1
87-120099-001	XV Control System Includes: (1) 87-120042-001 SVA (1) 87-120044-001 TEST CARTRIDGE (2) 87-120039-001 MICROSWITCH KIT1	(1) 87-120043-001 SYSTEM CARTRIDGE (1) 87-120058-001 EMT CONNECTOR KIT 1
87-120016-001	ADP NOZZLE	2
87-120017-001	F NOZZLE	1
87-120019-001	R NOZZLE	1
87-120064-001	UNIVERSAL FUSIBLE LINK HOUSING	3
87-120060-001	FUSIBLE LINK 360 DEG F	3
875572	MANUAL REMOTE RELEASE STATION (CABLE)	1
844648	CORNER PULLEY	AS REEQUIRED
219649	CABLE, 1/16" X 500 FT. LONG	AS REEQUIRED



- INSTALLATION NOTE
1. SYSTEM DESIGNED & INSTALLED IN ACCORDANCE WITH NFPA 17A, ULC/ORD-C1254.6 & MANUFACTURER'S SPECIFICATIONS.
 2. PIPING TO BE BLACK STEEL GALVANIZED SCHEDULE 40.
 3. ALL FITTINGS TO BE MINIMUM 150 LB CLASS, MALLEABLE IRON OR DUCTILE IRON.
 4. REDUCING BUSHINGS OR REDUCING TEES CAN BE USED FOR CHANGES IN PIPE DIAMETER.
 5. R NOZZLE TO BE LOCATED BETWEEN 20-42 INCHES ABOVE RANGE..
 6. F NOZZLE TO BE LOCATED BETWEEN 27-45 INCHES ABOVE FRYER.

LIMITATIONS		
	PULL STATION	FUSIBLE LINK DETECTOR(S)
1/16" CABLE	100 FT.	100 FT.
CORNER PULLEYS	30	30
TEE PULLEYS	1	0

APPLICABLE TO HULL: 6094, 6095, 6096, 6097, 6098, 6099, 6101, 6102 AND 6103

CCGS PRIVATE ROBERTSON V.C.
CCGS CAPORAL KAEBLE V.C.
CCGS CORPORAL TEATHER C.V.
CCGS CONSTABLE CARRIÈRE
CCGS G. PEDDLE
CCGS CORPORAL MCLAREN M.M.V.
CCGS A. LEBLANC
CCGS M. CHARLES
CCGS CAPTAIN GODDARD M.S.M.

AF	As Fitted	May/05/2012	YYL
3	Revised As Per Lloyds Register North Americas Inc's Comments February 24/2011	March/05/2011	YYL
2	FM-200 Cylinder Relocated to Emergency Generator Room and Piping Revised	November 11/2010	YYL
1	FM-200 Cylinder Relocated to MCR and Piping Revised	October 15/2010	YYL
Rev.	Description	Date	By
Client: CANADIAN COAST GUARD		NATIONAL & MARINE FIRE SERVICES CORP	
international contract engineering		Title: GALLEY KITCHEN EXHAUST HOOD FIRE SUPPRESSION SYSTEM LAYOUT PLAN	
IRVING IRVING SHIPBUILDING INC.		MID-SHORE PATROL VESSEL	
P.O.Box 9110, 3099 Barrington Street, Halifax NS, Canada B3K 5M7 Tel: 902.423.9271, Fax: 902.429.4510		Scale: 1:50 Size: D Dwg. date: SEPT/01/2010	
Drawn by: YYL		Checked by: RM	
Drawn by: AF NS1003		Rev. AF Sheet: 3 of 3	

THE GOVERNMENT OF CANADA HAS A LICENCE FOR THIS DRAWING UNDER CONTRACT NO F7045-060001/00202. THE INFORMATION AND DATA CONTAINED HEREIN ARE PROPRIETARY TO IRVING SHIPBUILDING INC. AND ARE NOT TO BE USED, COPIED, REPRODUCED, DUPLICATED OR DISCLOSED TO OTHERS, IN WHOLE OR IN PART, WITHOUT PRIOR WRITTEN CONSENT OF IRVING SHIPBUILDING INC. ALL RIGHTS RESERVED.