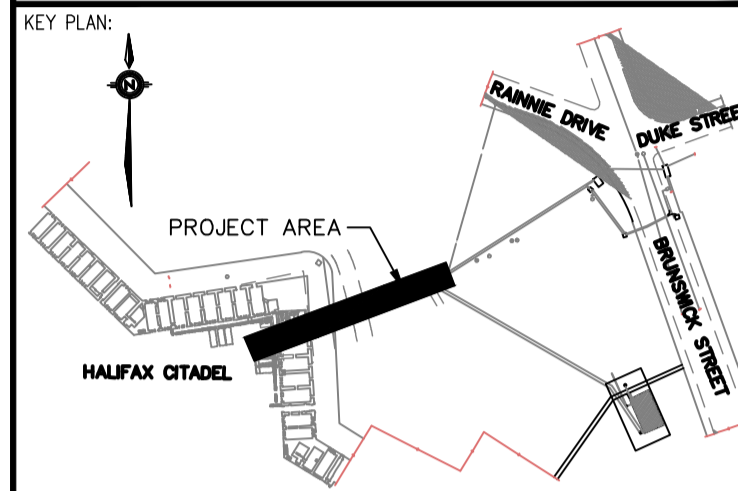
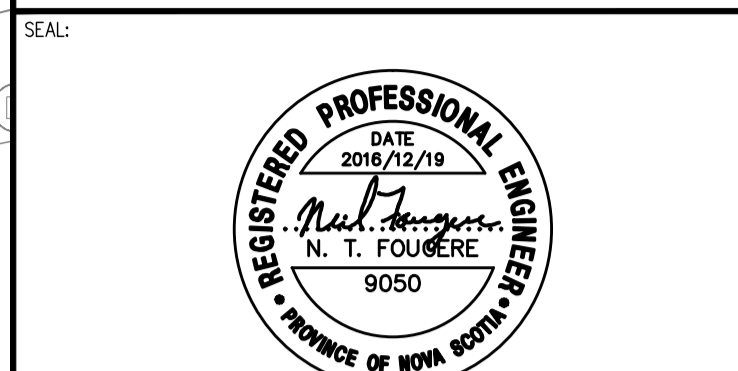




WSP Canada Inc.
1 Spenceville Lake Drive
Dartmouth, Nova Scotia, Canada B3B 1X7
T 902-835-9955 F 902-835-1645 www.wspgroup.com



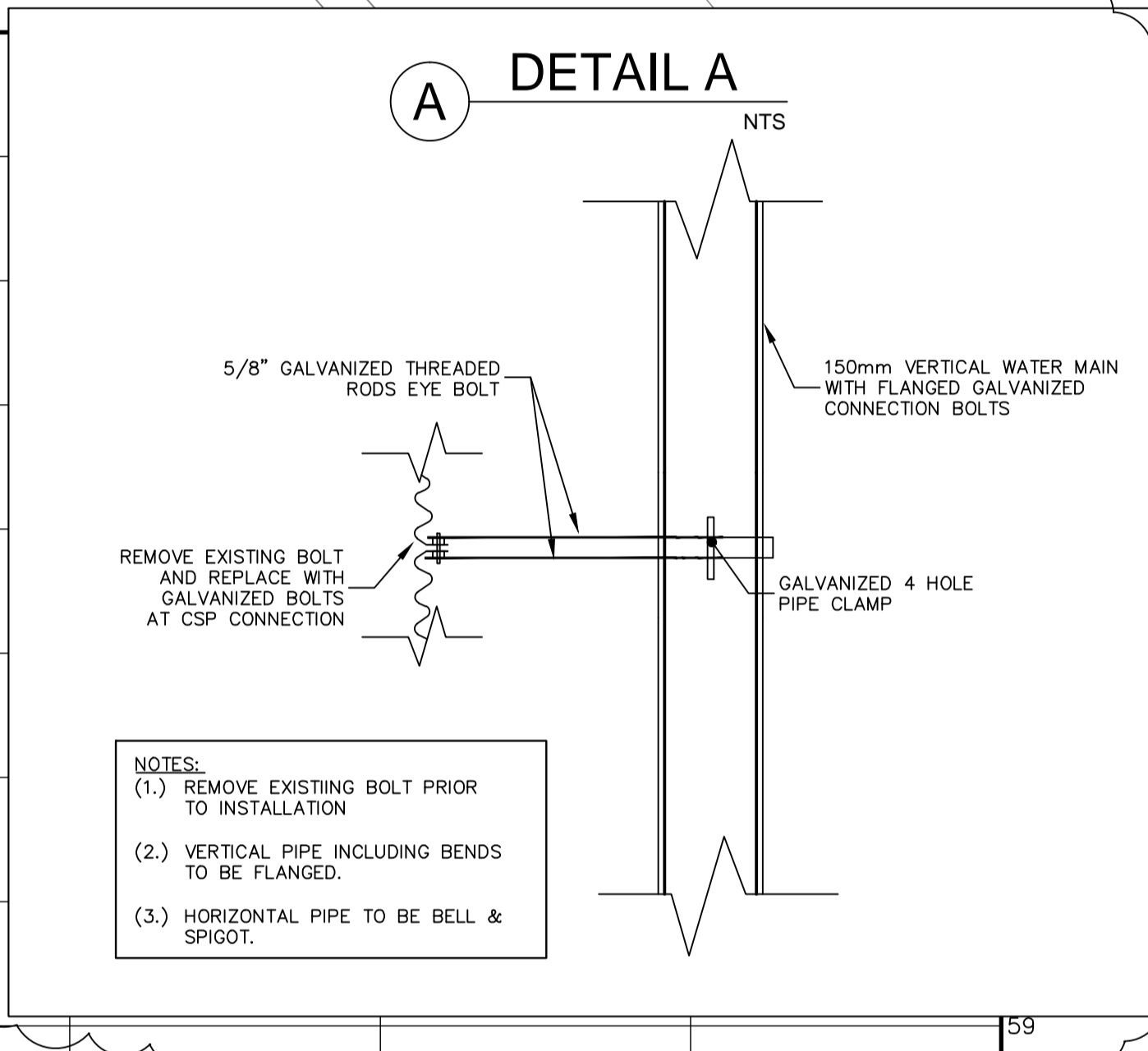
LEGEND:	PROPOSED	EXISTING
EDGE OF PAVEMENT	---	---
LOTLINE	---	---
WATERMAIN & GATE VALVE	--- ---	--- ---
SANITARY PIPE & MANHOLE	--- ---	--- ---
STORM PIPE & MANHOLE	--- ---	--- ---
UTILITY LINES & POLE	---	---
STREET BOUNDARY	---	---
PROPERTY BOUNDARY	---	---
EASEMENT	---	---
CURB & DRIVEWAY CUT	---	---
CATCH BASIN	---	---
FIRE HYDRANT	---	---
STREET TREE	---	---
ROAD SIGN	---	---
PROPOSED	---	---
EXISTING	---	---

REVISION:	NO.	DATE	DESCRIPTION
	5	2016/12/19	ISSUED FOR ADDENDUM #5
	4	2016/12/08	ISSUED FOR ADDENDUM #1
	3	2016/10/12	ISSUED FOR TENDER
	2	2016/09/16	ISSUED FOR 99% REVIEW
	1	2016/08/11	PHASE RS-4 DESIGN DEVELOPMENT
	0	2016/07/22	PHASE RS-3 DESIGN DEVELOPMENT

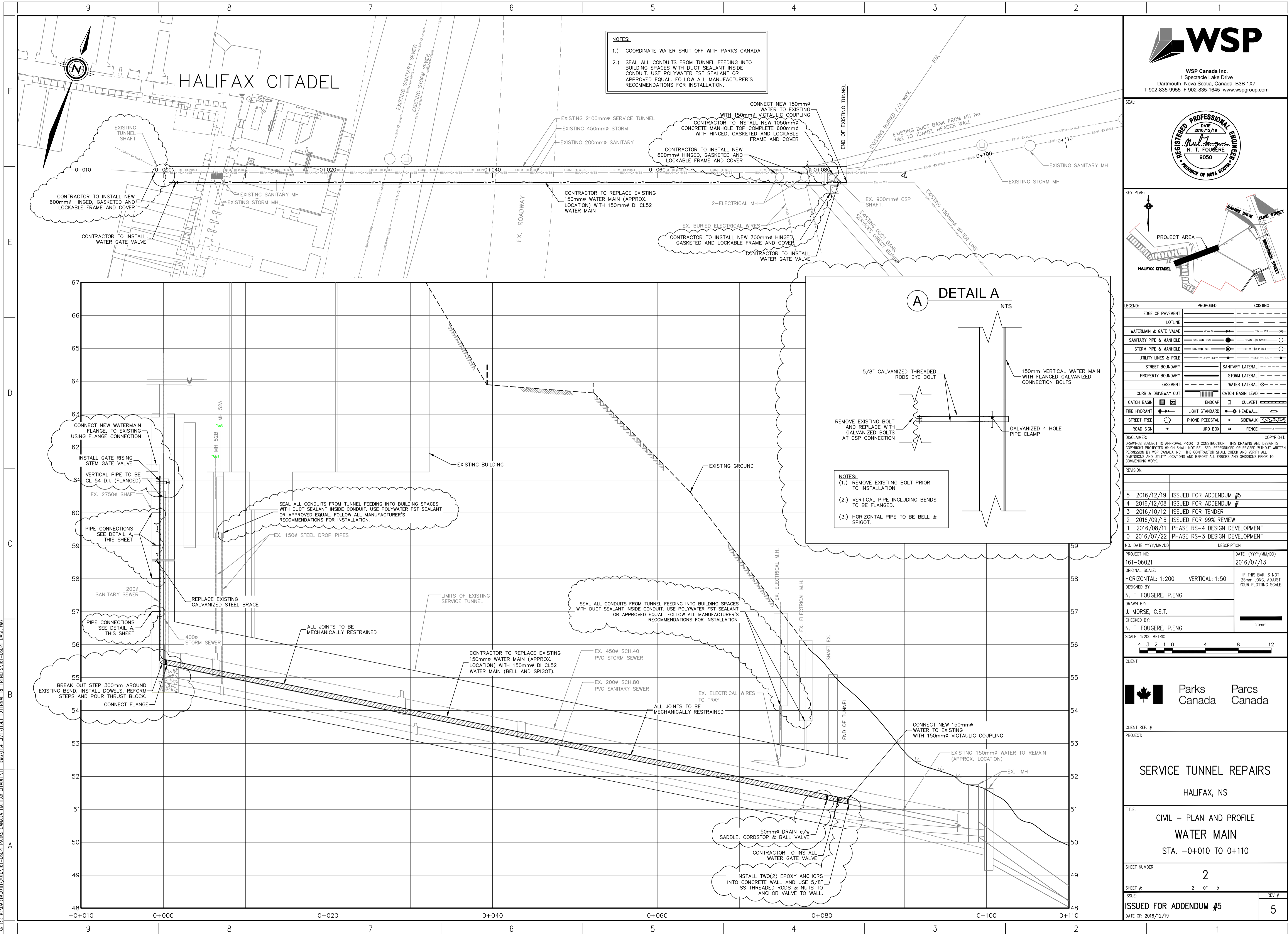
PROJECT NO:	161-06021	DATE: (YYYY/MM/DD)	2016/07/13
ORIGINAL SCALE:	HORIZONTAL: 1:200 VERTICAL: 1:50	IF THIS BAR IS NOT 25mm LONG, ADJUST YOUR PLOTTING SCALE.	
DESIGNED BY:	N. T. FOUGERE, P.ENG		
DRAWN BY:	J. MORSE, C.E.T.		
CHECKED BY:	N. T. FOUGERE, P.ENG		
SCALE:	1:200 METRIC		
CLIENT:	Parks Canada / Parcs Canada		

CLIENT REF. #	
PROJECT:	SERVICE TUNNEL REPAIRS HALIFAX, NS
TITLE:	CIVIL - PLAN AND PROFILE WATER MAIN STA. -0+010 TO 0+110
SHEET NUMBER:	2
ISSUE:	ISSUED FOR ADDENDUM #5
DATE OF:	2016/12/19
REV #	5

NOTES:
1.) COORDINATE WATER SHUT OFF WITH PARKS CANADA
2.) SEAL ALL CONDUITS FROM TUNNEL FEEDING INTO BUILDING SPACES WITH DUCT SEALANT INSIDE CONDUIT. USE POLYWATER FST SEALANT OR APPROVED EQUAL. FOLLOW ALL MANUFACTURER'S RECOMMENDATIONS FOR INSTALLATION.



NOTES:
(1.) REMOVE EXISTING BOLT PRIOR TO INSTALLATION
(2.) VERTICAL PIPE INCLUDING BENDS TO BE FLANGED.
(3.) HORIZONTAL PIPE TO BE BELL & SPIGOT.



XREFS: K:\DARTMOUTH\2016\161-06021-PARKS CANADA-HALIFAX CITADEL\11-4-CIVIL\11.4.1-EXTERNAL-REFERENCES\161-06021-BASE.DWG

K:\DARTMOUTH\2016\161-06021-PARKS CANADA-HALIFAX CITADEL\11-4-CIVIL\11.4.2-PRODUCTION-DRAWINGS\161-06021-PLAN AND PROFILE.DWG PRINTED: 4:08 PM 2016/12/20 BY: NELLEFOUGERE