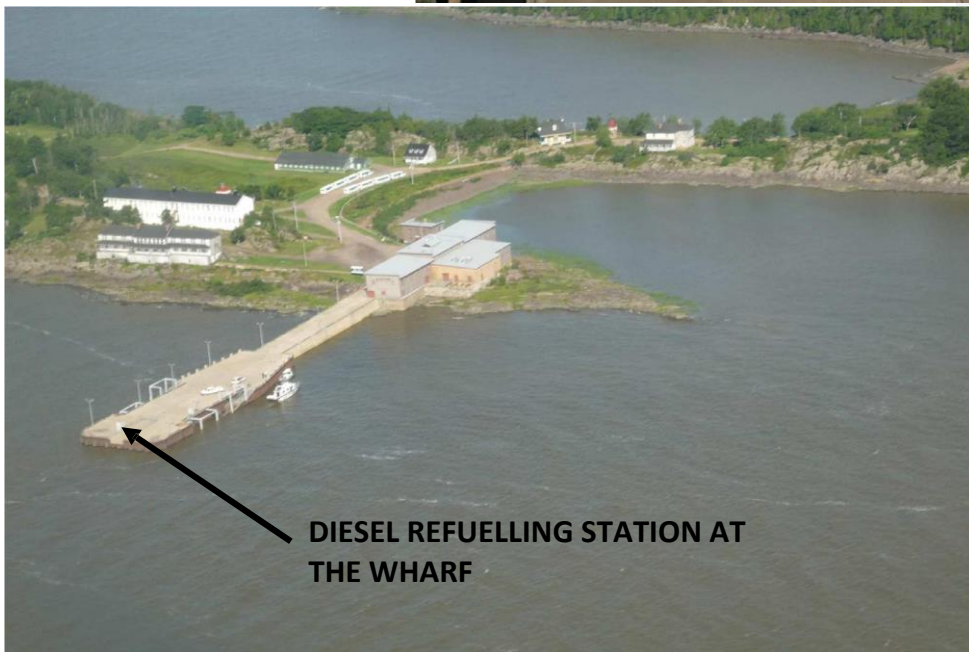


APPENDIX 1: Information about Grosse-Île Wharf

**GROSSE-ÎLE
WHARF**



**DIESEL REFUELLING STATION AT
THE WHARF**

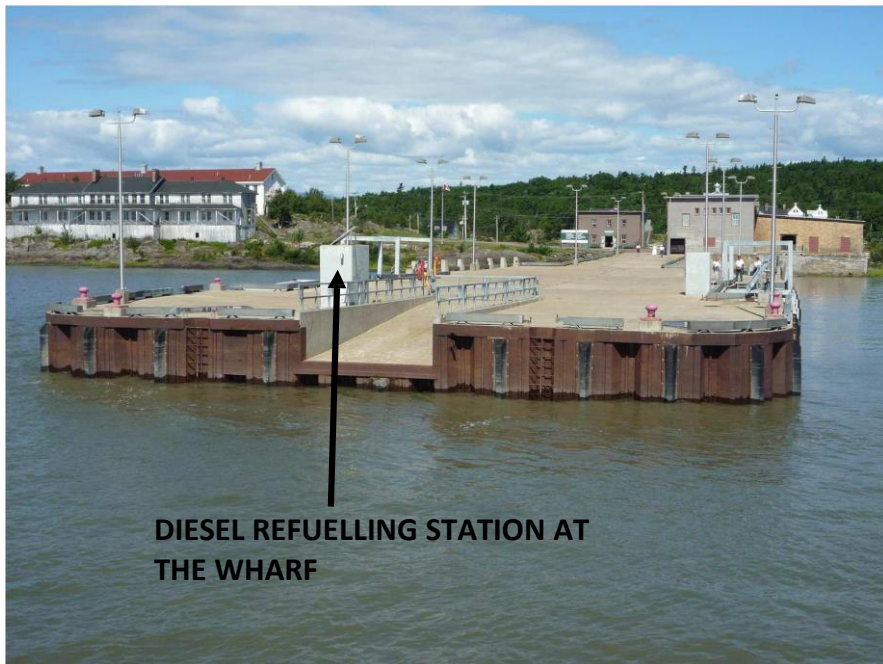
Diesel refuelling station at the wharf



3" Camlock connector at the wharf refuelling station



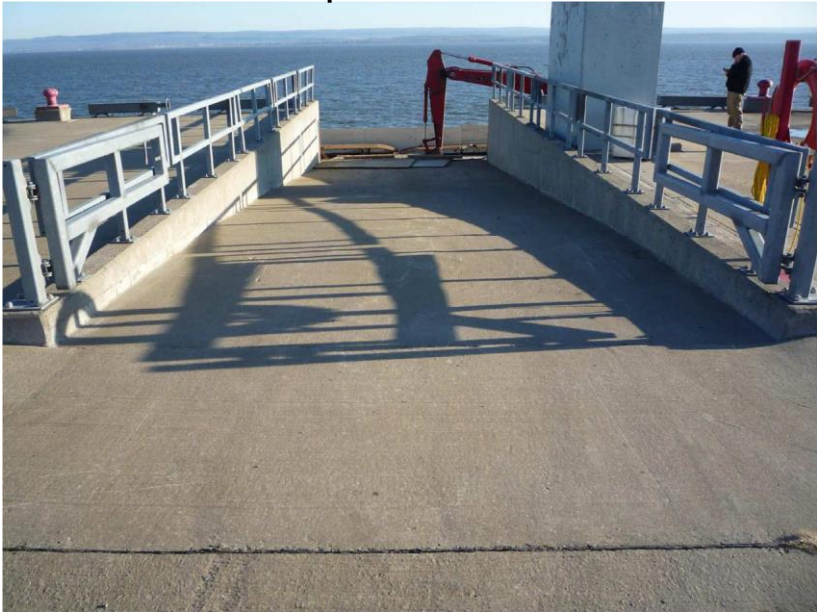
**Wharf and access ramp at
Grosse-Île (low and high tide)**



Ferry for visitors May to October



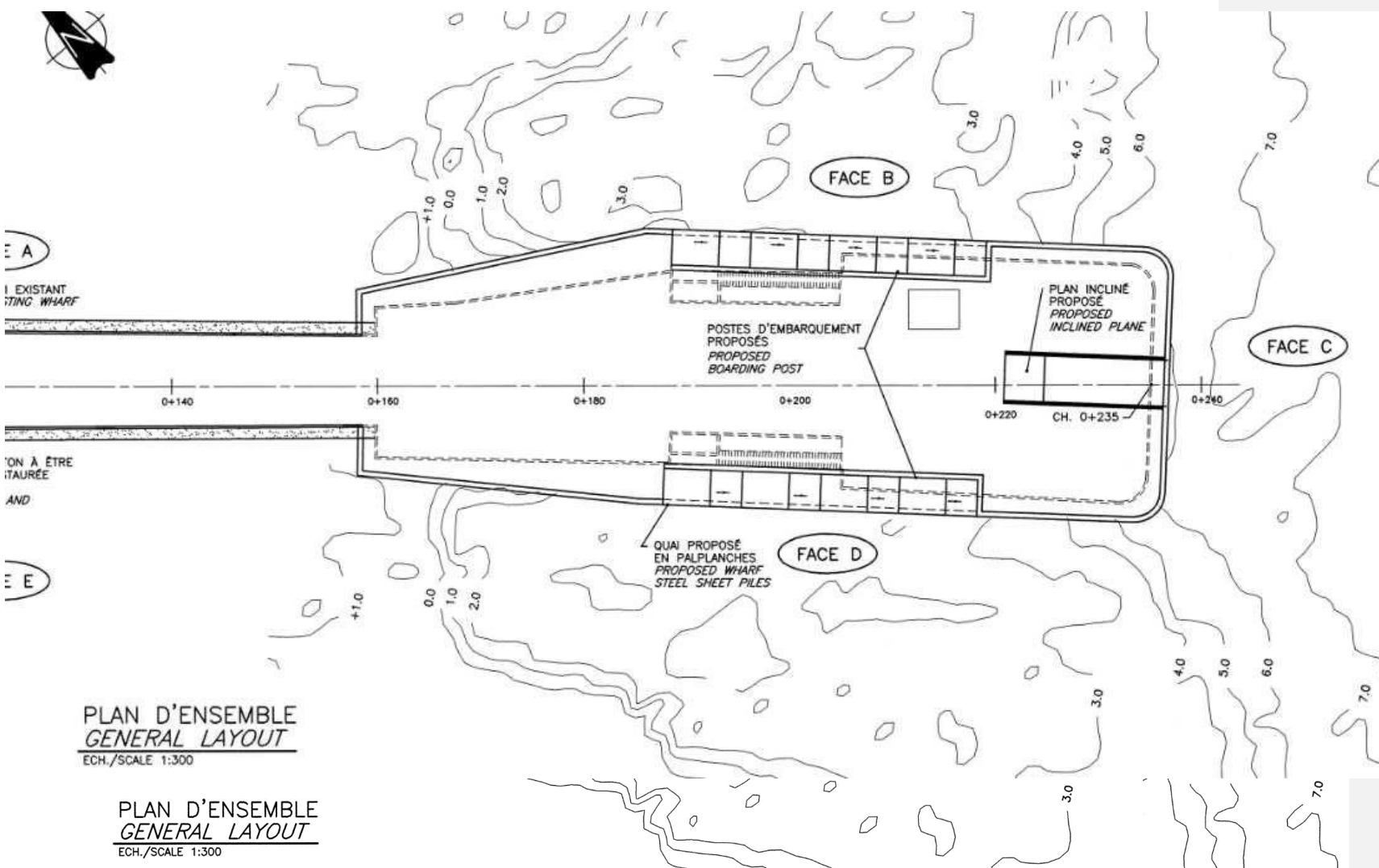
Access ramp viewed from the wharf



Location of Grosse-Île



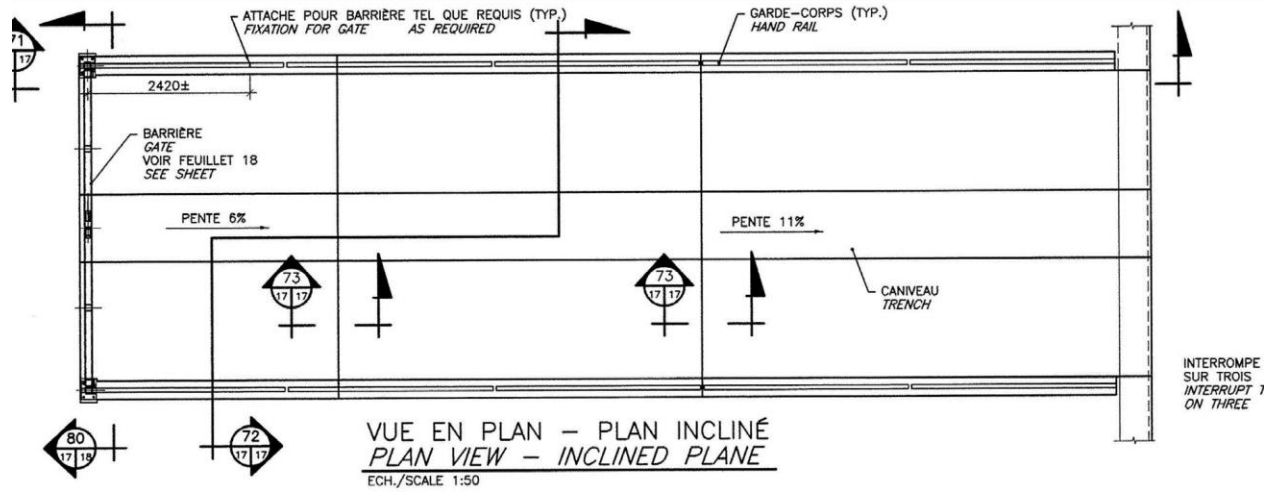
GROSSE-ÎLE WHARF



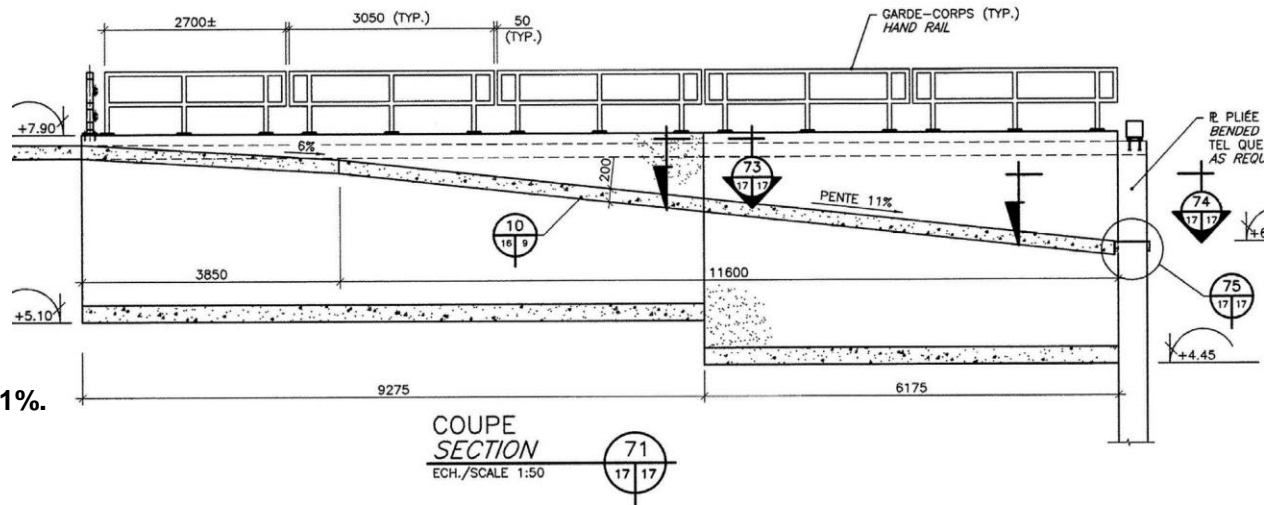
PLAN D'ENSEMBLE
GENERAL LAYOUT
ECH./SCALE 1:300

PLAN D'ENSEMBLE
GENERAL LAYOUT
ECH./SCALE 1:300

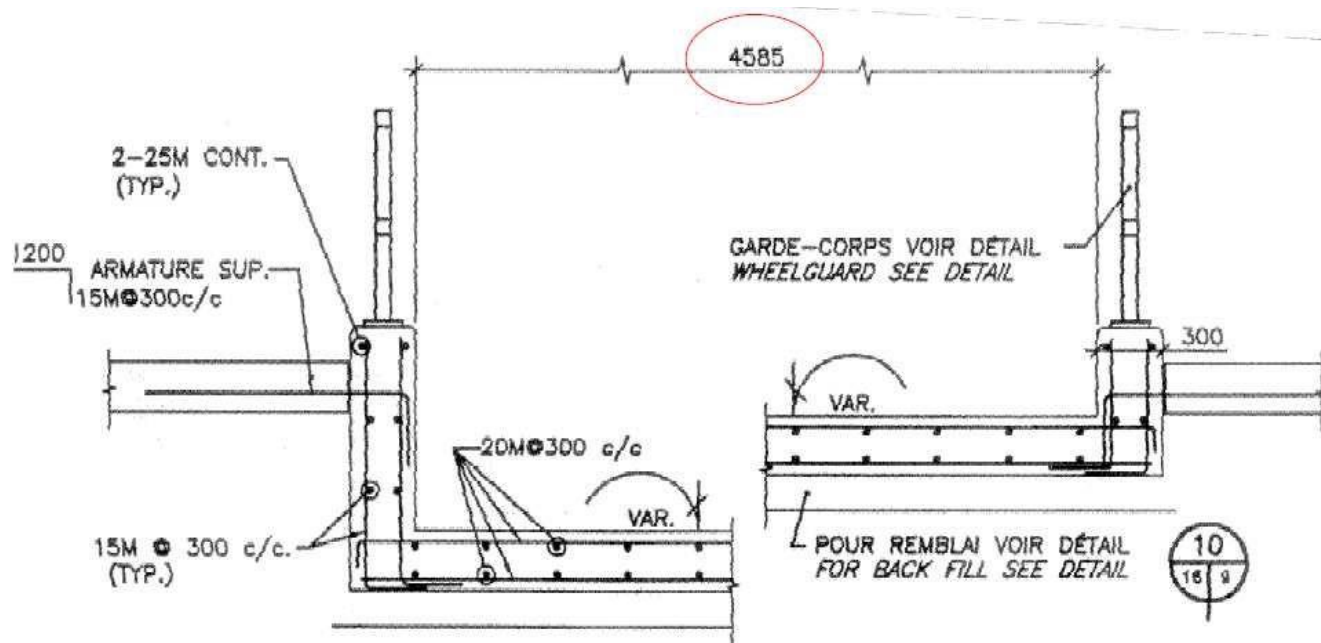
Access ramp, plan view



Access ramp, elevation view
(Length: 15.45 metres)
Inclines 6% and 11%.



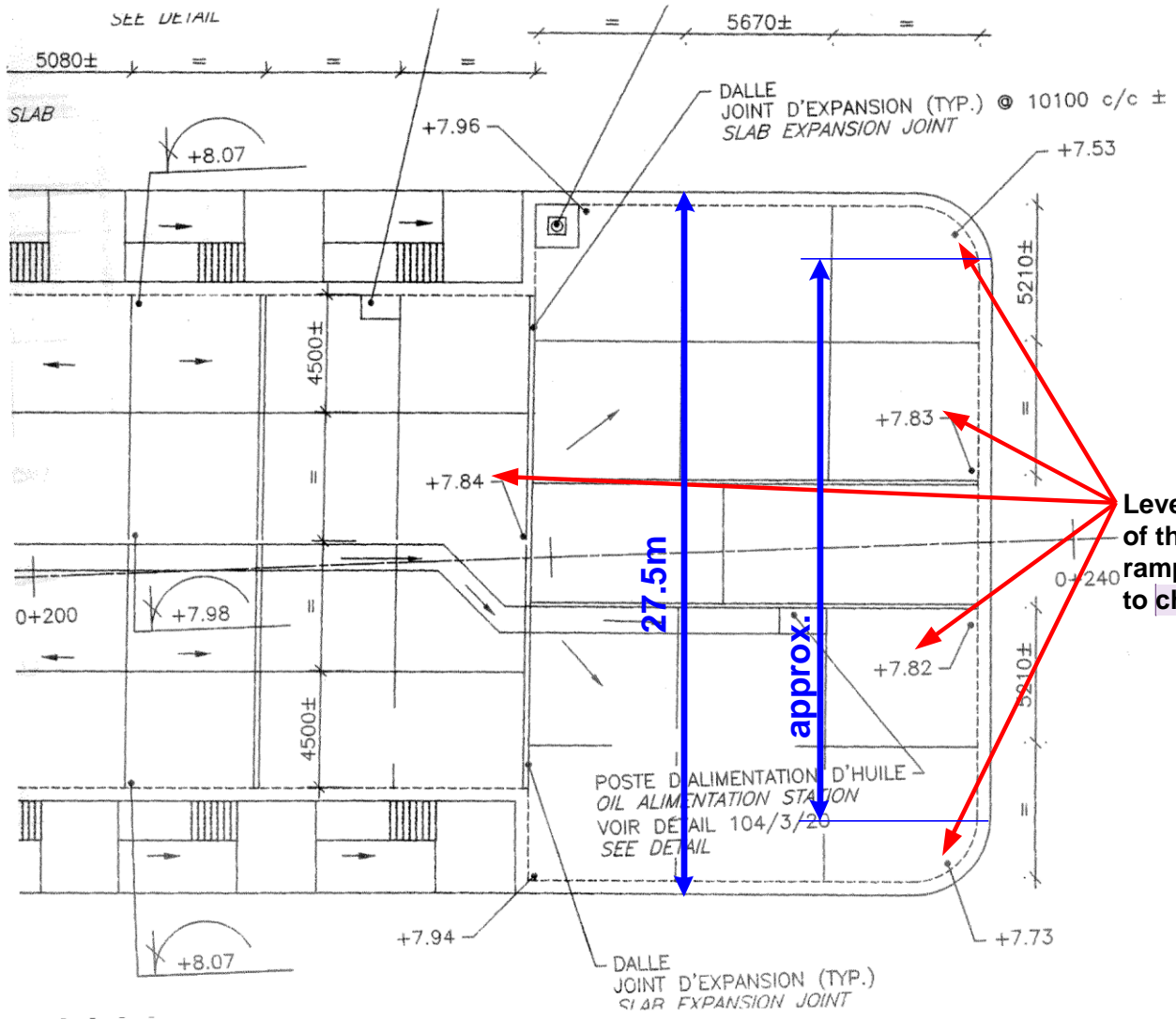
Access ramp, cross-section (Width 4.585 metres)



COUPE
SECTION

ECH./SCALE 1:25

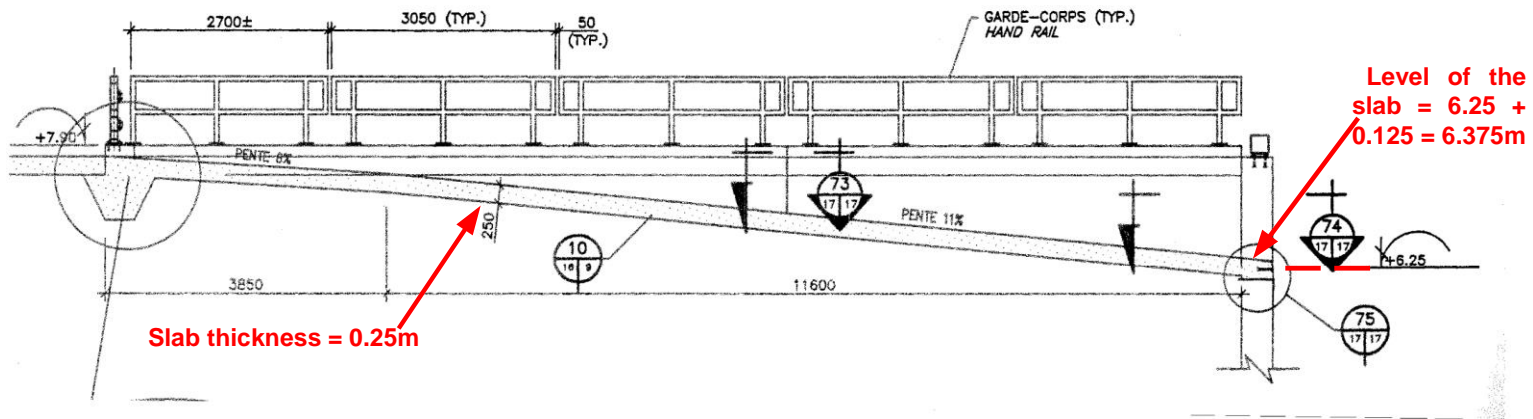




**Level of the quay and
of the top of the
ramp with reference
to chart datum**

Commented [JW1]: Terme official selon Terrium

Level of the concrete slab at the bottom of the ramp = 6.38 m



3 DÉFENSES TYPE 1 CHAQUE COIN (TYP.)
FENDERS AT EACH CORNER

BORNE D'AMARRAGE (TYP.)
BOLLARD

GARDE-ROUE EN ACIER (TYP.)
STEEL WHEELGUARD

DU QUAI
WHARF

VOIR DRAINAGE
SEE DRAINAGE

PARTIE EN COURBE
CURVED SECTION
(TYP.)

-5.50 ±

ECHELLE (TYP.)
LADDER

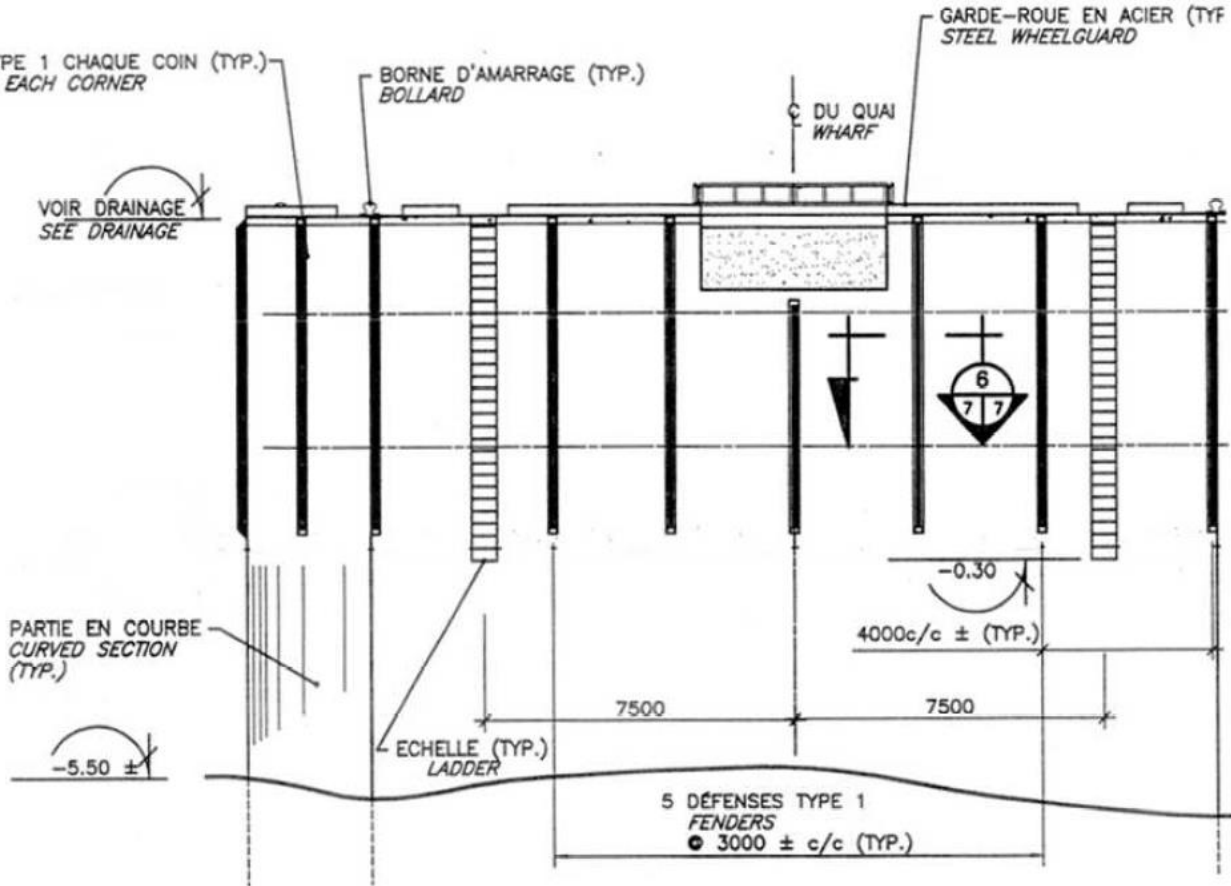
-0.30

4000c/c ± (TYP.)

7500

7500

5 DÉFENSES TYPE 1
FENDERS
● 3000 ± c/c (TYP.)



Bathymetry, Grosse-Île Quay. Measurements taken September 2015

