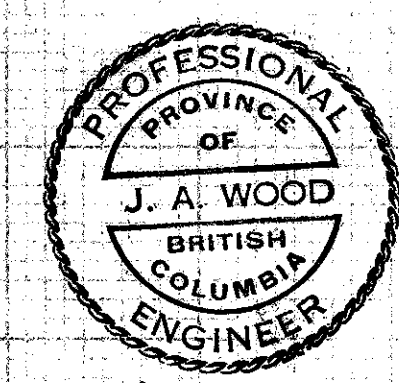


NOTE

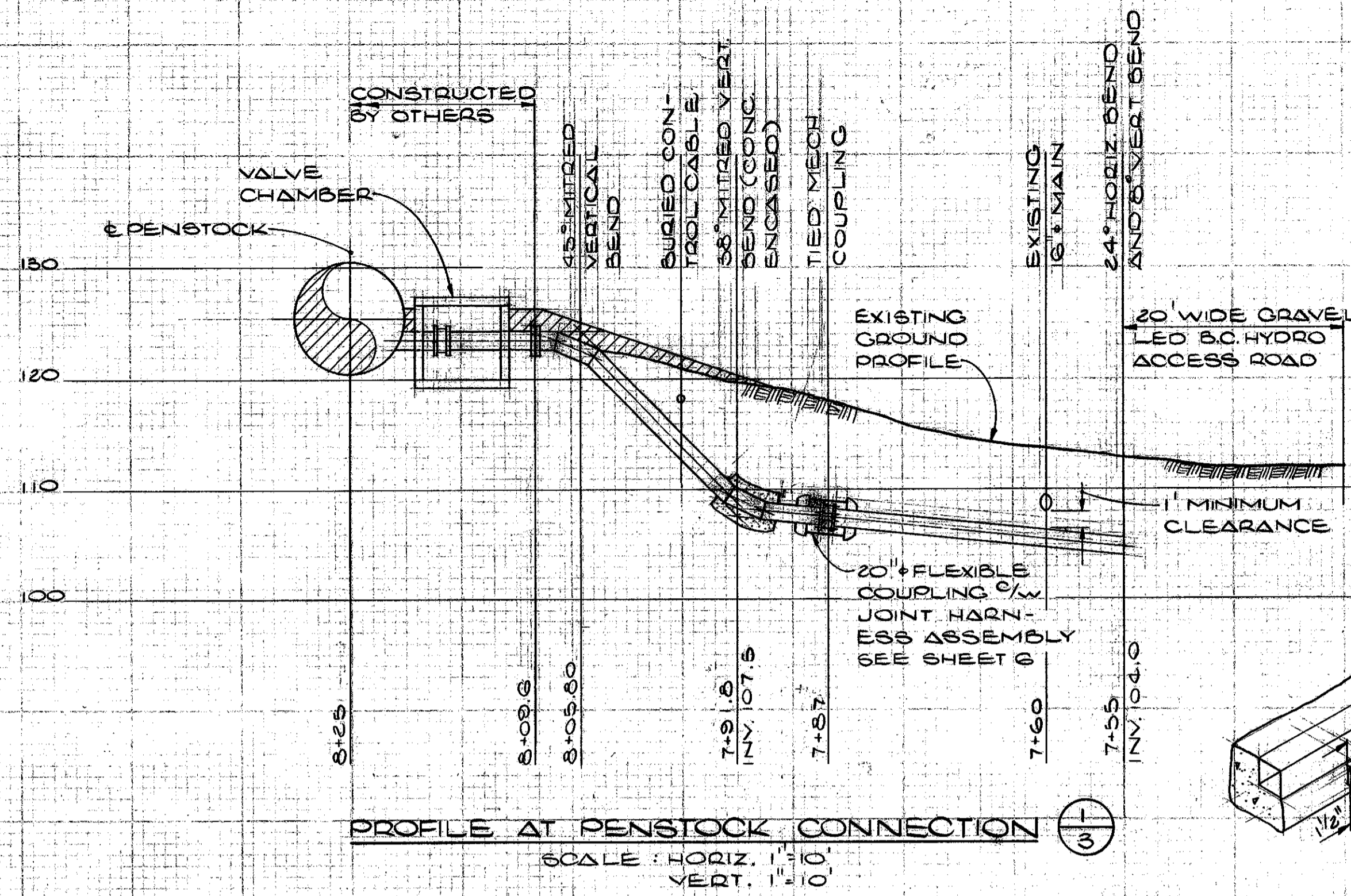
- (1) PULLED JOINTS AT MECHANICAL COUPLINGS SHALL NOT EXCEED 4° DEFLECTION.
- (2) FOR DETAILS OF VERTICAL AND HORIZONTAL MITRED BENDS SEE SHEET 8
- (3) MITRED VERTICAL BENDS REFERENCED TO THIS NOTE SHALL BE FABRICATED WITH THE STEEL SPECIAL FOR THE HORIZONTAL BEND
- (4) CONCRETE THRUST BLOCKS AND CONCRETE ENCASUREMENT SHALL NOT ENCASE MECHANICAL COUPLINGS.
- (5) COUPLINGS FOR STRAIGHT LENGTHS OF PIPE NOT SHOWN.

NOTE

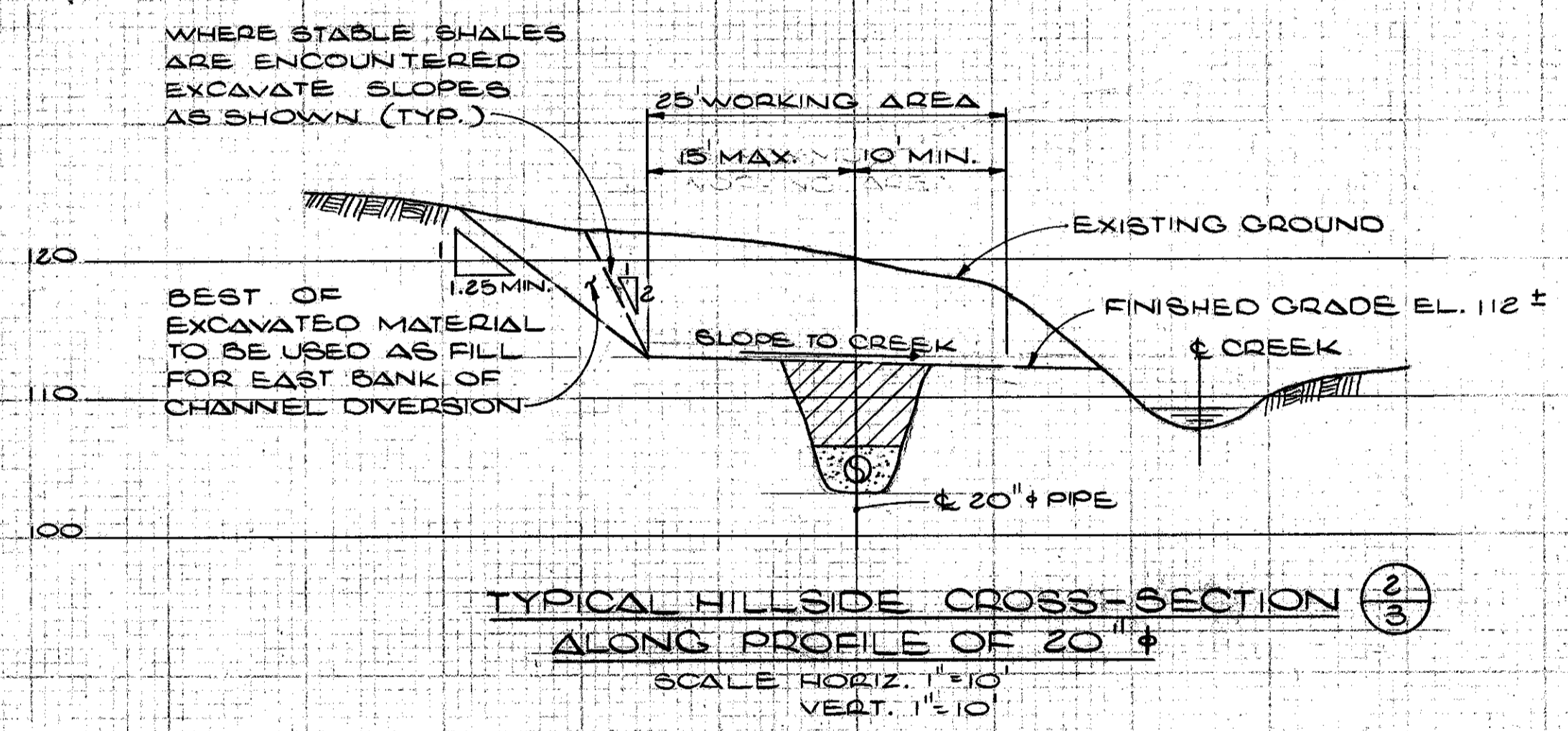
- (1) ALL TEST HOLES WERE EXCAVATED WITH A MODEL 410 JOHN DEERE BACKHOE (RUBBER TIRE)
- (2) SHALY-SILTSTONE ENCOUNTERED IN THE TEST HOLES COULD BE EXCAVATED BY THE RIPPING ACTION OF THE BACKHOE'S BUCKET TEETH (JOHN DEERE 410)
- (3) DAMES AND MOORE'S JAN. 1977 GEOTECHNICAL REPORT CONTAINS ADDITIONAL SOILS INFORMATION FOR THE SITE. CONTRACTOR MAY REVIEW THE COMPLETE REPORT AT D.O.F. OR K.W.L. OFFICES.



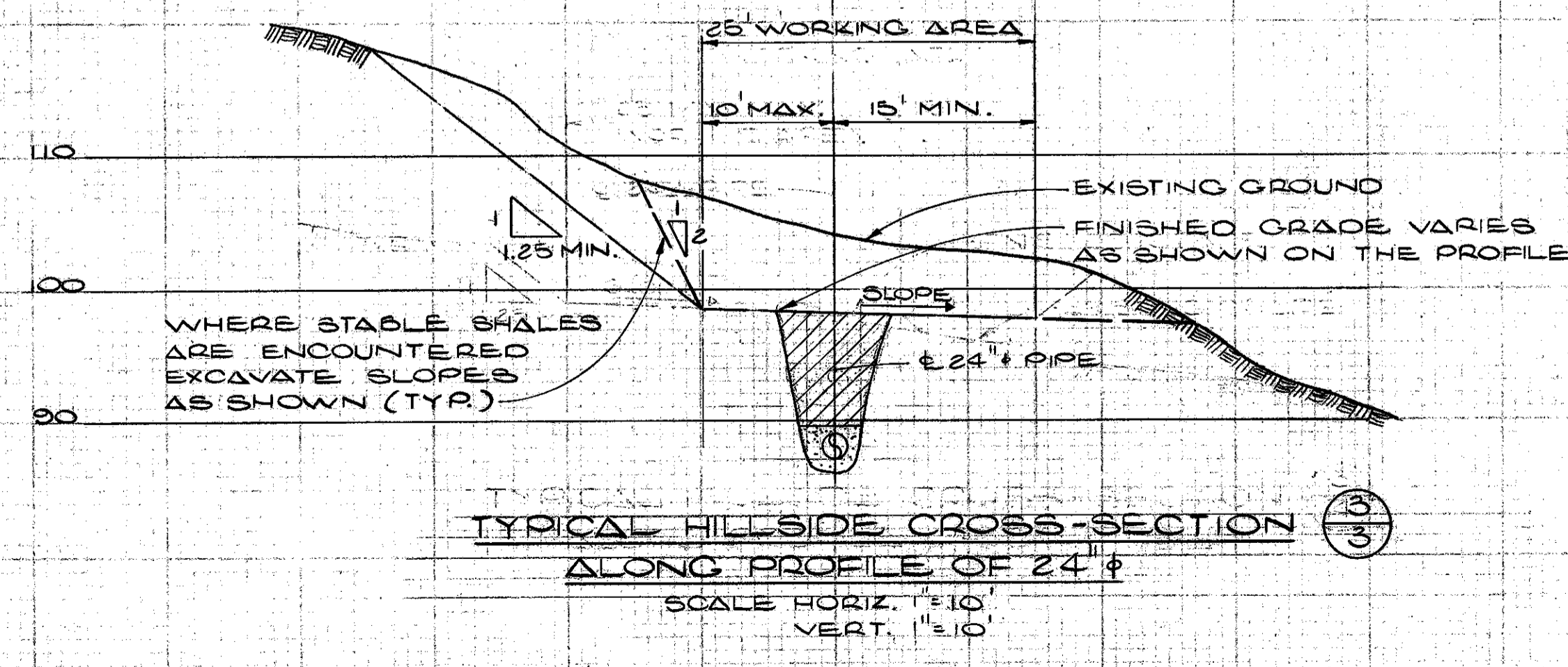
REVISIONS	ISSUE	DATE	DRN	CHD	APP'D	DESCRIPTION	DEPARTMENT OF FISHERIES AND THE ENVIRONMENT FISHERIES MANAGEMENT - PACIFIC REGION RECOMMENDED APPROVED APPROVED	DESIGNED: K.A.S. DRAWN: RK CHECKED:	KERR WOOD LEIDAL ASSOCIATES LTD. CONSULTING ENGINEERS 28/4/78	DEPARTMENT OF FISHERIES AND THE ENVIRONMENT PUNTECOE RIVER HATCHERY WATER SUPPLY MAINS - PROFILE AND TEST HOLE DATA	SCALE: AS SHOWN DRAWING No. 18-76-1 SHEET 4 OF 32 ISSUE B
	B	19/7/78	RK	JAW		AS CONSTRUCTED					



PROFILE AT PENSTOCK CONNECTION
SCALE: HORIZ. 1"=10'
VERT. 1"=10'

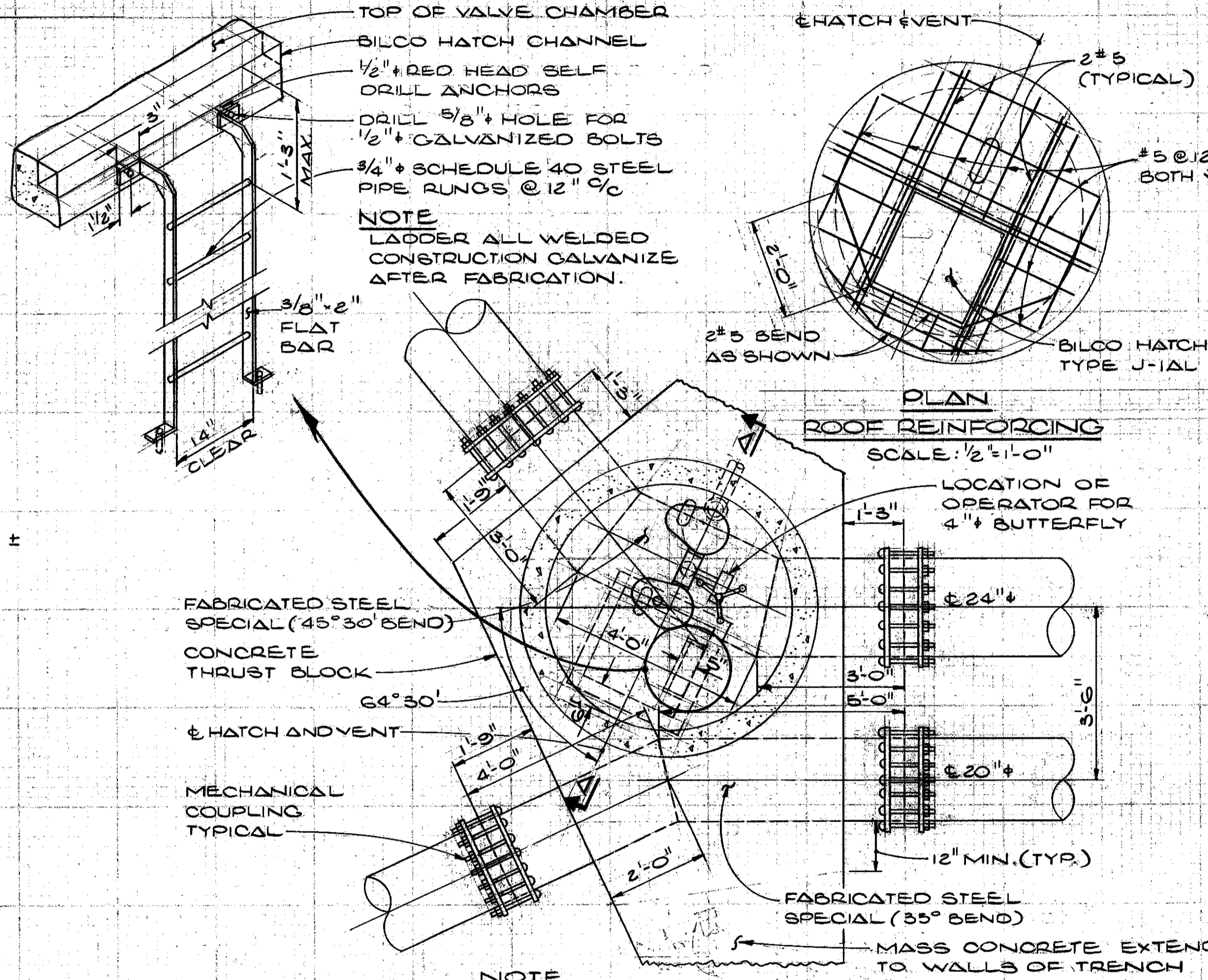


TYPICAL HILLSIDE CROSS-SECTION
ALONG PROFILE OF 20" φ
SCALE: HORIZ. 1"=10'
VERT. 1"=10'



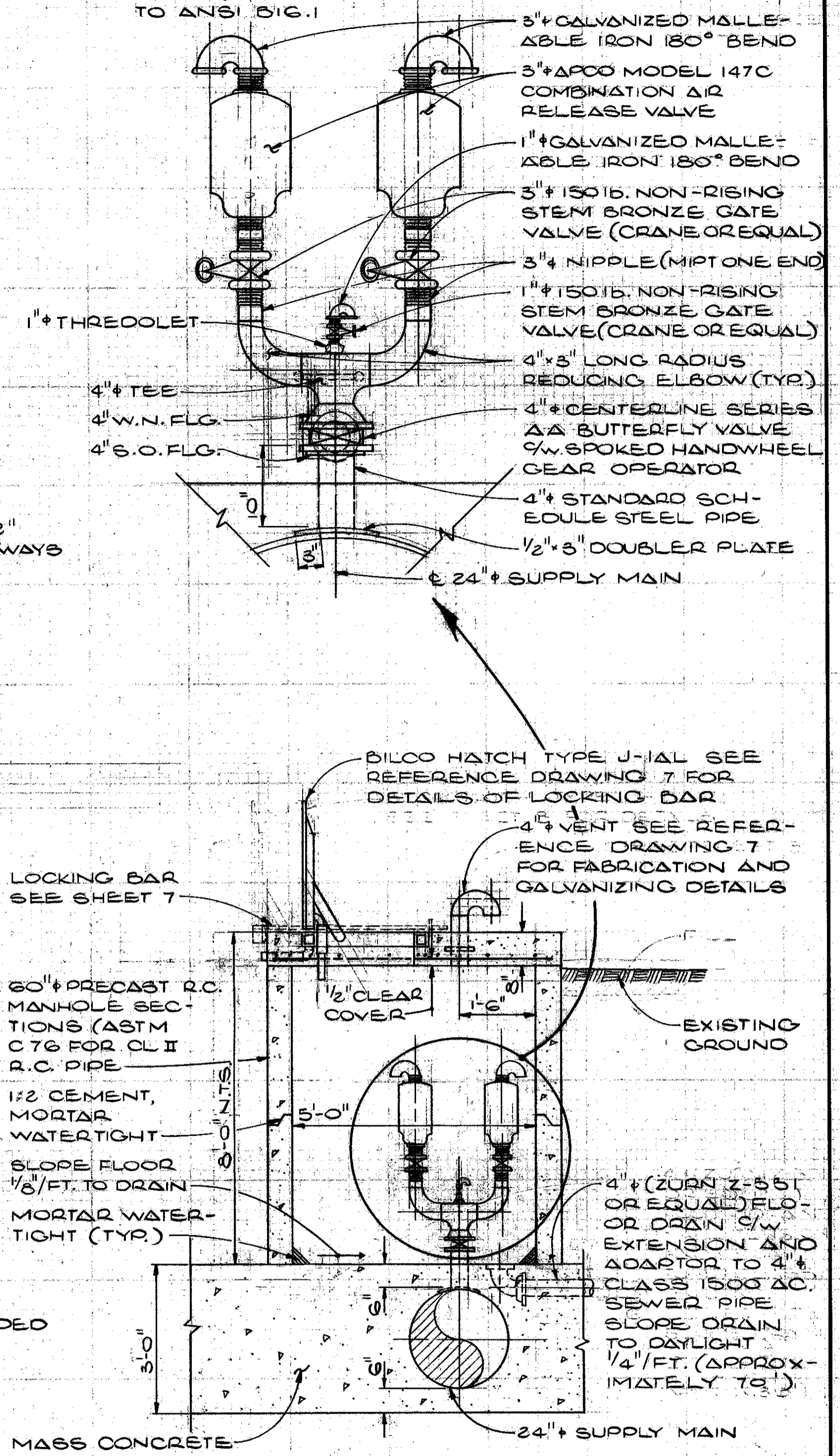
TYPICAL HILLSIDE CROSS-SECTION
ALONG PROFILE OF 24" φ
SCALE: HORIZ. 1"=10'
VERT. 1"=10'

- NOTE**
- (1) CONNECTION TO PENSTOCK AND CONSTRUCTION OF VALVE CHAMBER COMPLETED UNDER ANOTHER CONTRACT VALVE CHAMBER CONTRACT WILL TERMINATE WITH A 20" φ BLIND FLANGE OUTSIDE OF CHAMBER.
 - (2) CONTRACTOR TO REMOVE BLIND FLANGE AND INSTALL 20" φ FLANGED PLAIN END FABRICATED STEEL SPECIAL COMPLETE WITH JOINT HARNESS ASSEMBLY AS SHOWN
 - (3) LOCATION AND DEPTH OF EXISTING 16" φ MAIN TO BE CONFIRMED BY CONTRACTOR PRIOR TO FABRICATION OF STEEL SPECIAL. IF NECESSARY THE GRADE AND ALIGNMENT OF THE 20" φ WILL BE ADJUSTED (AS DIRECTED BY THE ENGINEER) TO SUIT FIELD CONDITIONS.
 - (4) LOCATION AND DEPTH OF THE EXISTING WATER DISTRICT CONTROL CABLE TO BE CONFIRMED BY CONTRACTOR PRIOR TO INSTALLATION OF 20" φ PIPING (CABLE IS TYPE "Z" 4 #22 AWG ARMORED AND JACKETED)

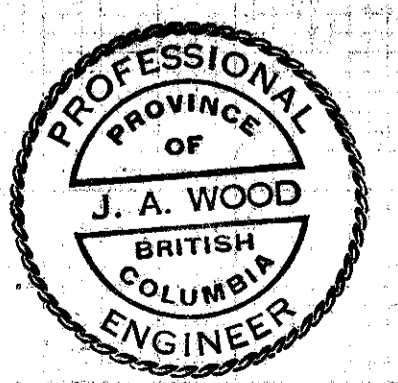


PLAN
AIR VALVE CHAMBER AND
COMBINED THRUST BLOCK
SCALE: 1/2"=1'-0"

- NOTE**
- (1) ALL WELDING FITTINGS SHALL BE STANDARD SCHEDULE TUBE TURN OR EQUAL
 - (2) ALL THREADED NIPPLES SHALL BE FABRICATED FROM SCHEDULE 80 STEEL PIPE.
 - (3) STEEL FLANGES SHALL BE AWWA CLASS E (275 PSI RATING) WITH DIMENSIONS AND DRILLING CONFORMING TO ANSI B16.1



SECTION A-A
SCALE: 1/2"=1'-0"



REVISIONS	ISSUE	DATE	DRN	CHD	APPO	DESCRIPTION	DEPARTMENT OF FISHERIES AND THE ENVIRONMENT FISHERIES MANAGEMENT - PACIFIC REGION 	DESIGNED: J.A.W./K.A.S. DRAWN: RK CHECKED: JAW	KERR WOOD LEIDAL ASSOCIATES LTD. CONSULTING ENGINEERS 28/4/78	DEPARTMENT OF FISHERIES & THE ENVIRONMENT PUNTLIDGE RIVER HATCHERY WATER SUPPLY MAINS - TYPICAL X-SECTIONS AND MISCELLANEOUS DETAILS	SCALE: AS SHOWN
	B	13/7/78	RK	JAW	JAW	AS CONSTRUCTED					SHEET 5 OF 32 ISSUE 5 31-6-208