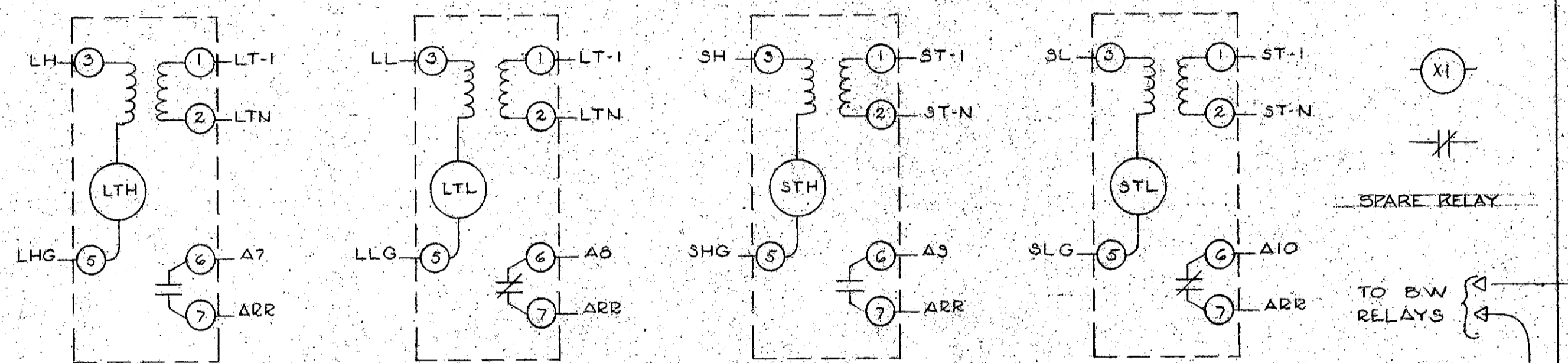
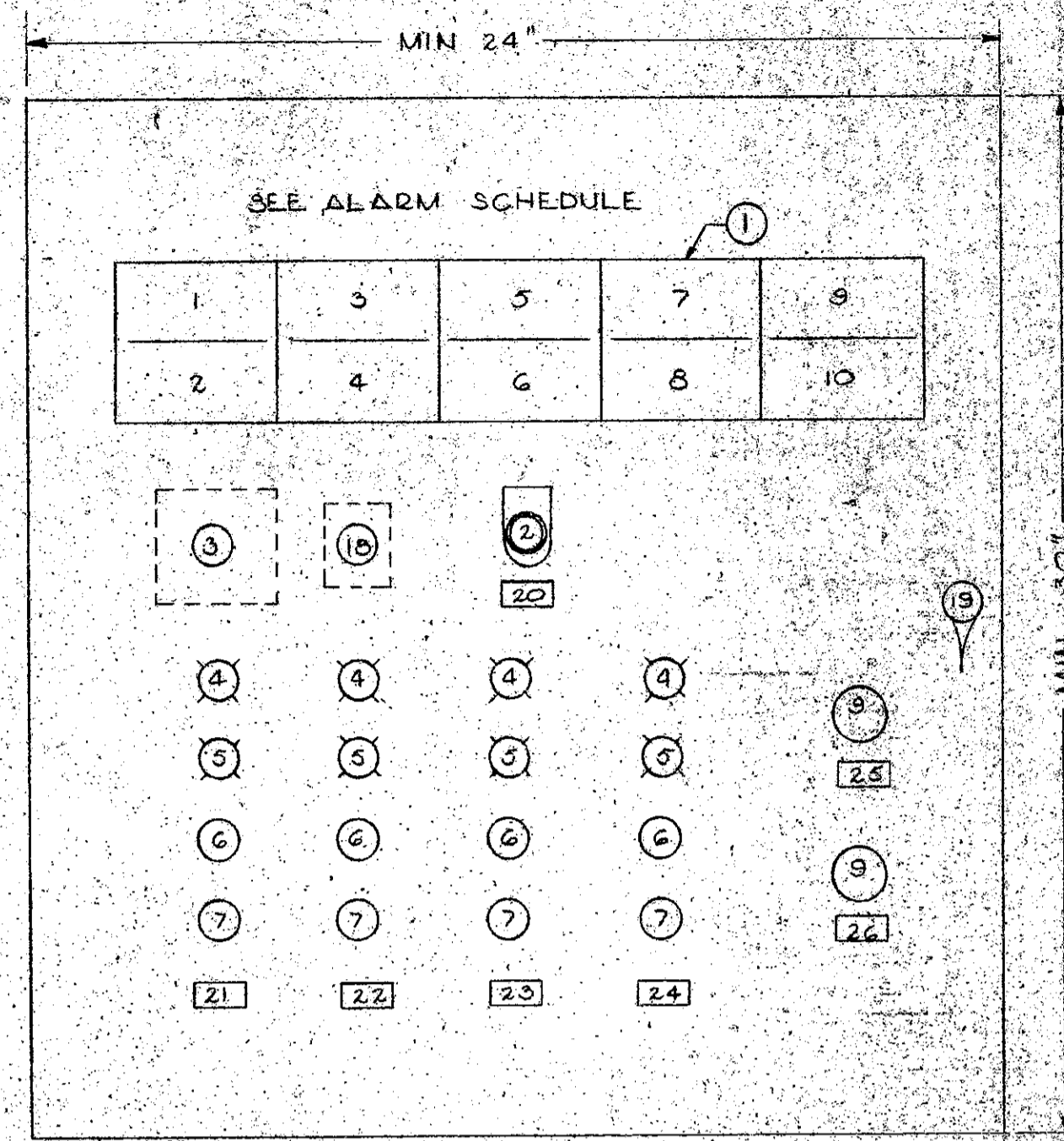


WIRING DOOR (AS SEEN FROM REAR OF DOOR)



EQUIPMENT SCHEDULE

1. ALARM PANEL (PANALARM TWINPOINT)
2. TEST/ACKNOWLEDGE SELECTOR SWITCH
3. HORN
4. PILOT LIGHT 120 VOLT A.C. RED. %w RUNNING LEGEND PLATE
5. PILOT LIGHT 120 VOLT A.C. GREEN %w STOPPED LEGEND PLATE
6. N.O. PUSHBUTTON, HEAVY DUTY DILTIGHT, RED, %w START LEGEND PLATE
7. N.C. PUSHBUTTON, HEAVY DUTY DILTIGHT, GREEN %w STOP LEGEND PLATE
8. RELAY 120 VOLT COIL, I.N.C. CONTACT
9. SELECTOR SWITCH, 3 POSITION, HEAVY DUTY DILTIGHT, %w HAND OFF AUTO LEGEND PLATE
10. B.W. TYPE L INDUCTION RELAY PRIMARY VOLTAGE 120, SECONDARY VOLTAGE 360
11. B.W. TYPE R INDUCTION RELAY PRIMARY VOLTAGE 120, SECONDARY VOLTAGE 360
12. 15 TERMINAL STRIP
13. 12 TERMINAL STRIP FUSED DISCONNECT TYPE (SEE SPEC.)
14. 14 TERMINAL STRIP
15. 10 TERMINAL STRIP
16. 34 TERMINAL STRIP
17. 30 TERMINAL STRIP
18. RELAY 120 VOLT COIL, I-N.O. CONTACT
19. LOCKING DOOR HANDLE



MIN. PANEL DEPTH 14"

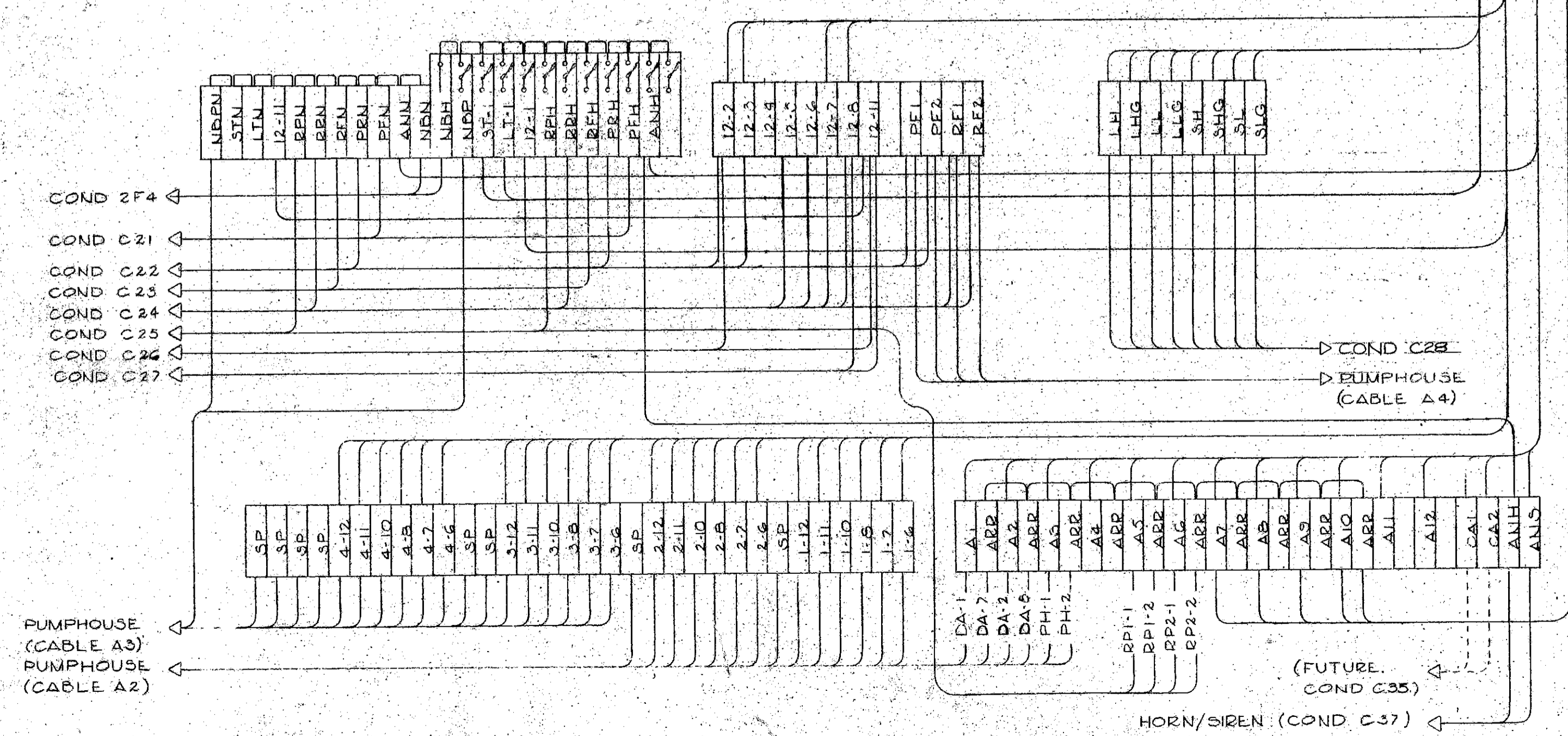
LAYOUT - DOOR

ALARM SCHEDULE

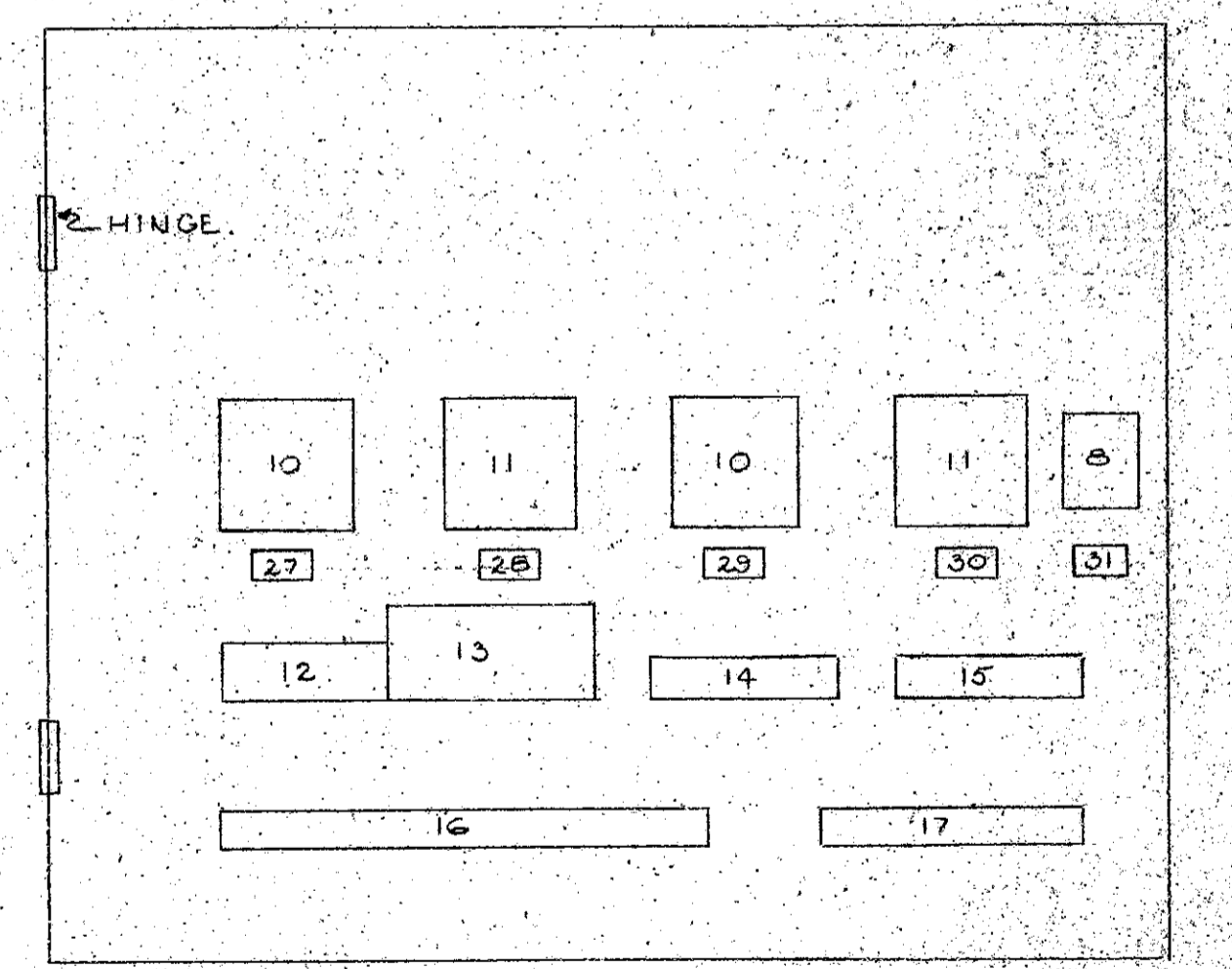
1. NO.1 DIESEL ENGINE FAULT
2. NO.2 DIESEL ENGINE FAULT
3. PUMPHOUSE M.C.C. FAULT
4. (SPACE)
5. WATER SUPPLY HI PRESSURE
6. WATER SUPPLY LOW PRESSURE
7. LARGE TANK HI LEVEL
8. LARGE TANK LOW LEVEL
9. SMALL TANK HI LEVEL
10. SMALL TANK LOW LEVEL

LAMICON NAMEPLATE SCHEDULE

20. ANNUNCIATOR
21. PUMP NO.1, 75 H.P.
22. PUMP NO.2, 125 H.P.
23. PUMP NO.3, 125 H.P.
24. PUMP NO.4, 40 H.P.
25. 10 INCH DIAM. PRESSURE REDUCING VALVE
26. 12 INCH DIAM. PRESSURE REDUCING VALVE
27. LTH
28. LTL
29. SH
30. STL
31. XI



WIRING - REAR MOUNTING PANEL



LAYOUT - REAR MOUNTING PANEL

