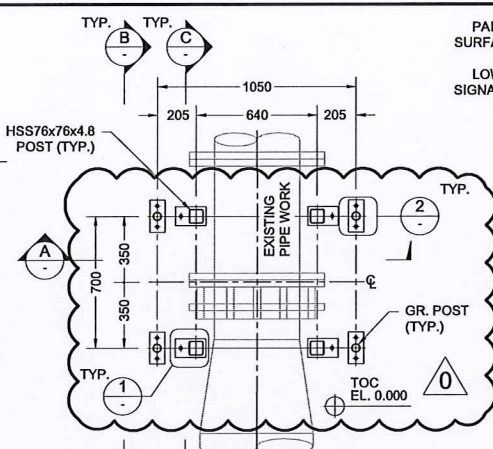


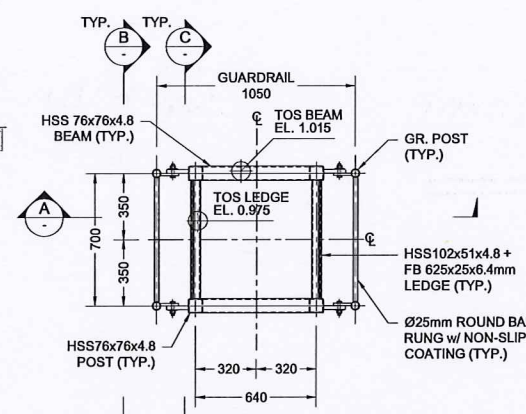
**KEY PLAN**  
SCALE: 1:50

- NOTES:**
- GENERAL**
    - FOR RECORD DRAWINGS REFER TO DFO DRAWING #31-6-204 TO 31-6-299.
    - LOCAL REFERENCE ELEVATIONS RELATIVE TO TOP OF CONCRETE FLOOR. (TOC FLOOR EL. 0.000m = EL. 22.555m UTM)
    - DESIGN CRITERIA
      - CODES AND STANDARDS
        - BRITISH COLUMBIA BUILDING CODE OF CANADA, 2012
        - CAN/CSA S16 LIMIT STATES DESIGN OF STEEL STRUCTURES
      - DESIGN LOADS (PERMISSIBLE LIVE LOADS DUE TO USAGE)
 

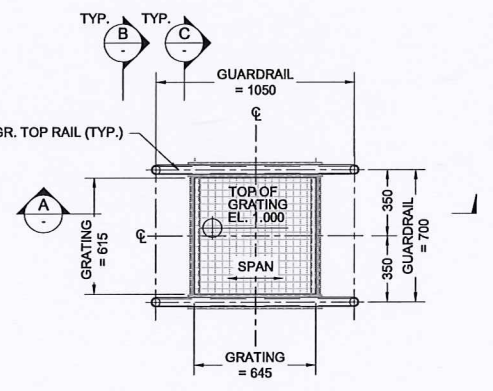
- GRATING LOADS (GREATER OF)	4.8 kPa OR 1.2 kN
- VERTICAL LOADS ON GUARDRAILS (GREATER OF)	1.5 kN/m OR 1.0 kN
- HORIZONTAL LOADS ON GUARDRAILS (GREATER OF)	0.75 kN/m OR 1.0 kN
  - MATERIALS**
    - STRUCTURAL SECTIONS (GALVANIZED):
      - PLATE AND BAR TO CSA G40.21M, GR. 300W  $F_y = 240$  MPa
      - SQUARE AND RECTANGULAR HSS SECTIONS TO ASTM A500, GRADE C  $F_y = 345$  MPa
    - GRATING:
      - FIBERGRATE MOLDED GRATING OR PRE-APPROVED ALTERNATE
      - DEPTH = 25mm (1")
      - MESH = 25mm x 100mm (1" x 4")
      - SURFACE FINISH = PROVIDE A SLIP RESISTANT SURFACE USING INTEGRALLY APPLIED GRIT.
    - BOLTED CONNECTIONS (GALVANIZED):
      - BOLTS TO ASTM A325
      - NUTS TO ASTM A563
      - WASHERS TO ASTM A436 TYPE I
      - INSTALL BOLTS BY TURN-OF-NUT METHOD IN ACCORDANCE WITH CSA S16.
    - GUARDRAILS PIPE (PAINTED YELLOW):
      - DN40 XS POSTS TO ASTM A53, GRADE B,  $F_y = 240$  MPa
      - DN40 STD TOP RAILS TO ASTM A53, GRADE B,  $F_y = 240$  MPa
      - DN32 STD MIDDLE RAIL TO ASTM A53, GRADE B,  $F_y = 240$  MPa
      - FB100x10 mm KICKER PLATE TO CSA G40.21M, GR. 300W  $F_y = 300$  MPa
      - RUNGS TO BE Ø19.1 mm ROUND BAR WITH NON-SLIP COATING.  $F_y = 300$  MPa
    - POST-INSTALLED CONCRETE ANCHORS:
      - Ø15.8mm HILTI HAS-STAINLESS STEEL THREADED ROD TO ISO 898 CLASS 5.8 w/ HIT-HY200 EPOXY ADHESIVE, EMBEDDED LENGTH = 150mm.
    - WELDS:
      - WELD TO CSA W59 E49XX UNLESS OTHERWISE NOTED
      - PERFORM ALL WELDING USING WELDERS CERTIFIED IN ACCORDANCE WITH THE REQUIREMENTS OF CSA W47.1.
      - UNLESS NOTED OTHERWISE, WELDS ARE 6mm CONTINUOUS FILLET WELDS.



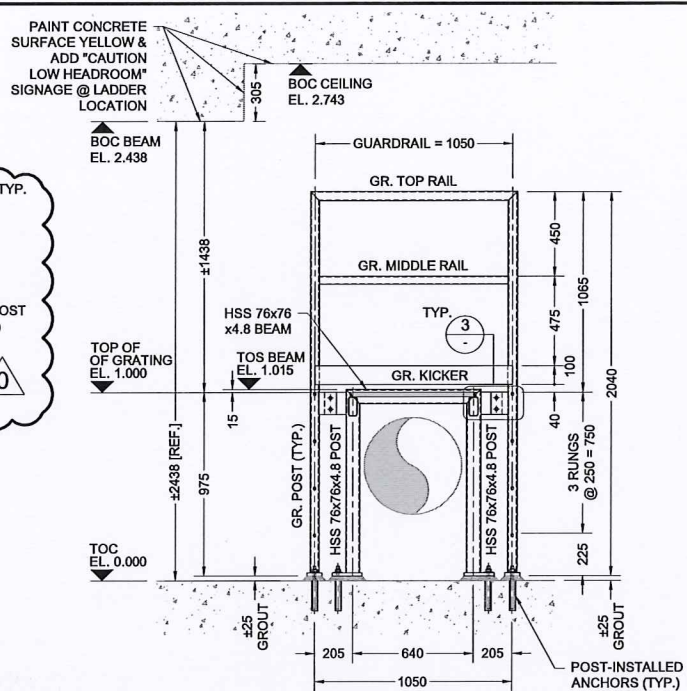
**PLAN - AT THE BASE**  
SCALE: 1:20



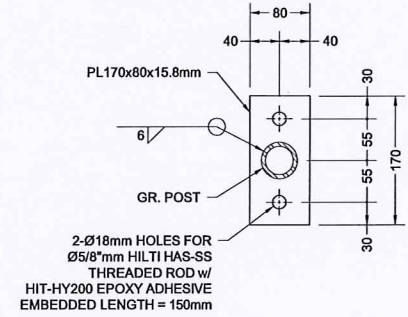
**PLAN - TOP OF STEEL**  
SCALE: 1:20



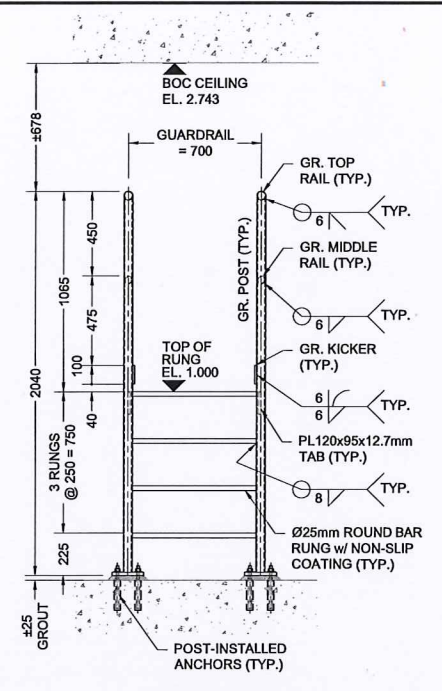
**PLAN - GRATING & GUARDRAIL**  
SCALE: 1:20



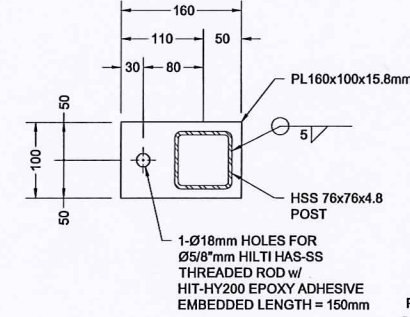
**A SECTION**  
SCALE: 1:20



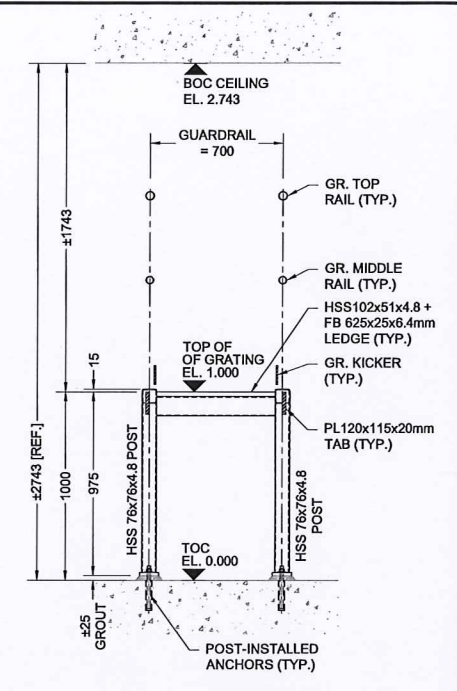
**1 DETAIL**  
SCALE: 1:5



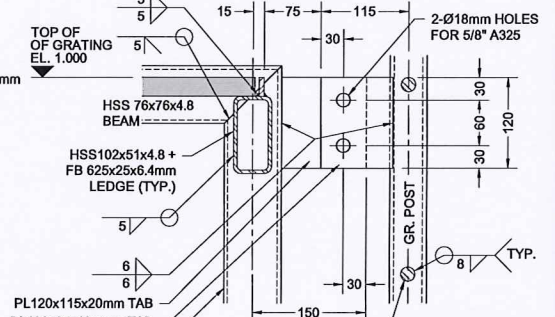
**B SECTION**  
SCALE: 1:20



**2 DETAIL**  
SCALE: 1:5



**C SECTION**  
SCALE: 1:20



**3 DETAIL**  
SCALE: 1:5



WHITESIDE ENGINEERING LTD.  
WATER UTILITY CONSULTING  
Phone: 604-738-6876 www.whiteside.co

**GEA** Gyax Engineering Associates Ltd.  
153-1718 Commercial Drive  
Vancouver, B.C. Canada V6L 0A3  
Tel: (604) 251-3614 Fax: (604) 251-3628  
Email: info@gyax.com

**FISHERIES AND OCEANS CANADA**  
REAL PROPERTY AND TECHNICAL SUPPORT

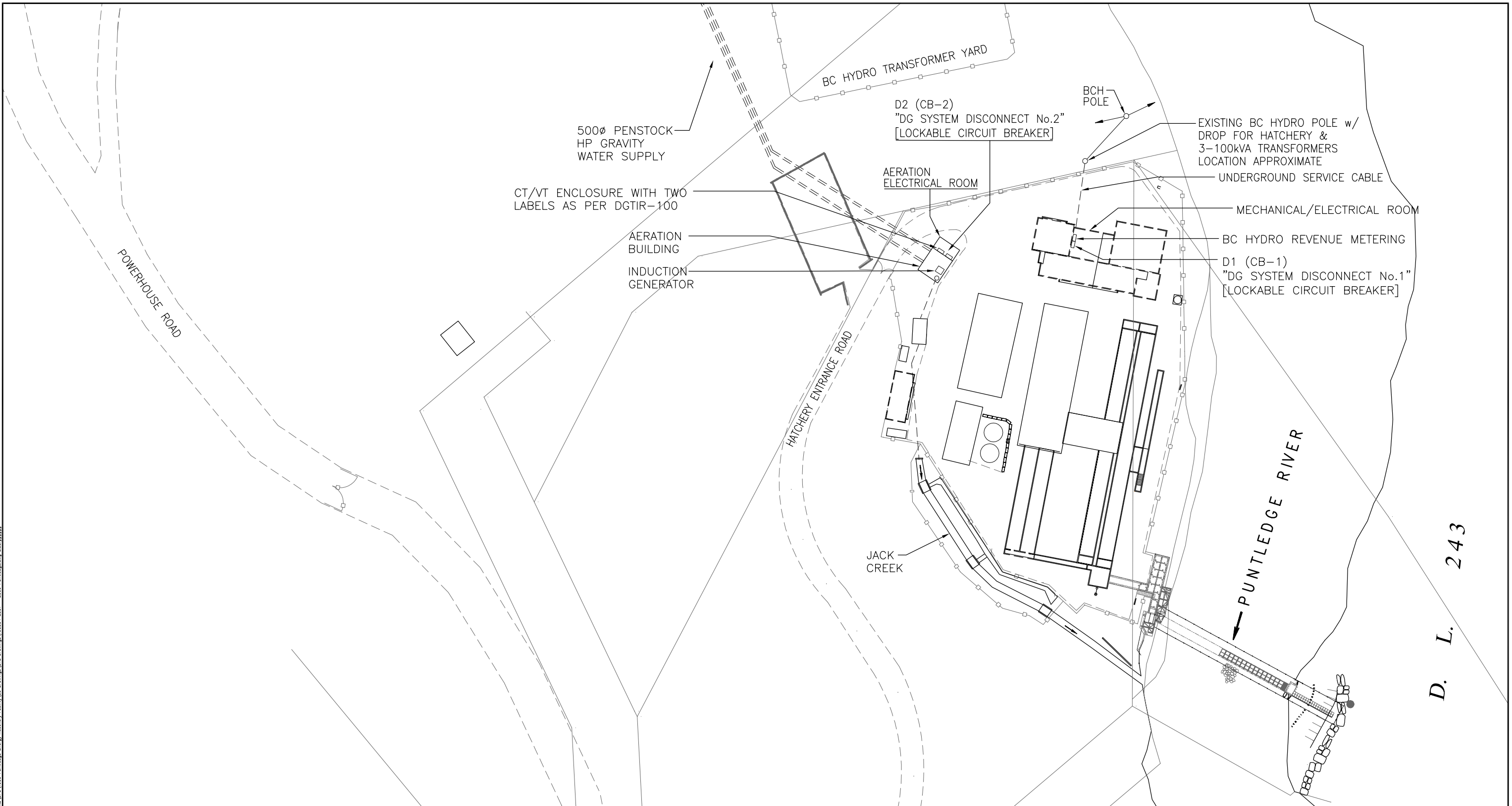
<b>PUNTLIDGE RIVER HATCHERY AERATION BUILDING MODIFICATIONS ACCESS PLATFORM PLAN, SECTIONS AND DETAILS</b>		SCALE AS SHOWN
		DATE 29JAN2016
		DRAWING NUMBER <b>S-001</b>
		REVISION <b>0</b>

DWG. NO.	DRAWING REFERENCES	NOTES	NO.	DATE	REVISIONS
			0	12FEB2016	ISSUED FOR CONSTRUCTION
			B	04FEB2016	ISSUED FOR PRICING
			A	01FEB2016	ISSUED FOR REVIEW





Plotted by: C:\Users\j\OneDrive\Documents\Projects\1606 Puntledge Energy Recovery Facility\08 Drawings\160604 E01 - E09 Puntledge.dwg Size: 11/11/16



D. L. 243

		<b>FISHERIES AND OCEANS CANADA</b> REAL PROPERTY AND TECHNICAL SUPPORT	
		<b>PUNTLEDGE RIVER HATCHERY</b> <b>WATER SUPPLY ENERGY RECOVERY</b> <b>BC HYDRO APPLICATION SITE PLAN</b>	SCALE NTS DATE 31-MAR-16 DRAWING NUMBER <b>E-013</b> REVISION    A
DWG. NO.	DRAWING REFERENCES	NOTES	DESIGNED RD DRAWN HSG CHECKED RD RECOMMENDED APPROVED APPROVED
		A    13-MAY-2016    ISSUED FOR BC HYDRO APPLICATION	NO.    DATE    REVISIONS