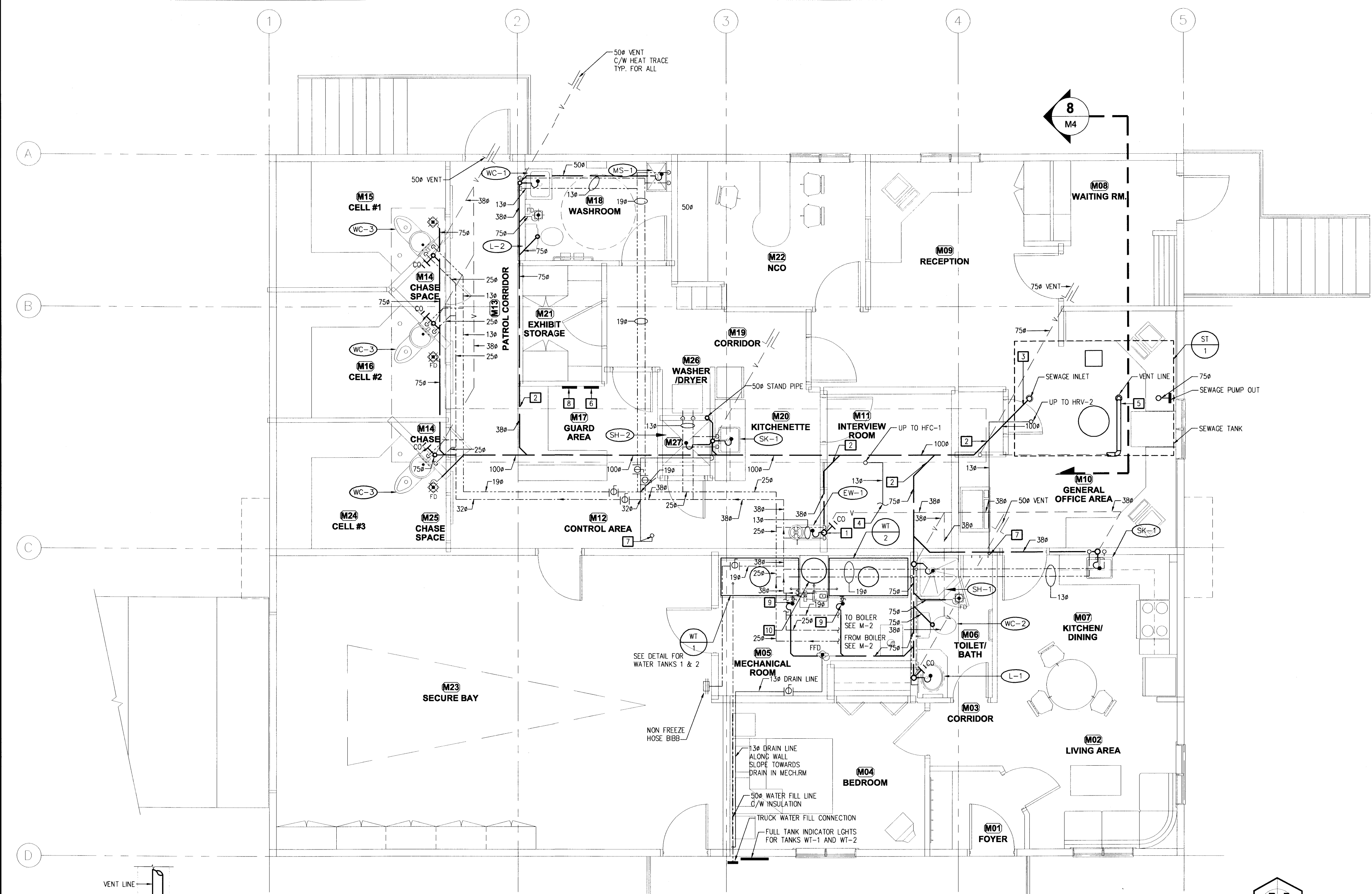


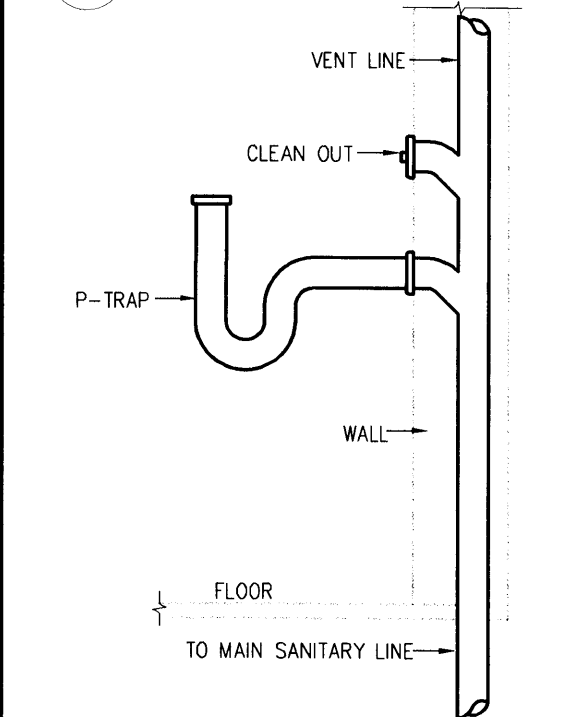
GENERAL NOTES:
 1. ALL DOMESTIC WATER LINES SHALL BE INSULATED.
 2. ALL PIPING PENETRATIONS THRU FIRE RATED WALLS SHALL BE FIRE STOPPED BY APPROVED FIRE STOP SYSTEM.
 3. CONDENSATE DRAIN LINES FOR FHC-1, HRV-1 AND HRV-2 SHALL BE LOCATED IN THE CEILING SPACE.

DRAWING NOTES:
 1. PLACE DOMESTIC COLD WATER AND DOMESTIC HOT WATER IN WALL CAVITY. PLACE MIXING VALVE IN WALL CAVITY AND SHUT-OFF VALVES. PROVIDE A 300x300 ACCESS PANEL.
 2. SANITARY SEWER LINE PENETRATIONS THRU CHASE SHALL BE FIRE STOPPED.
 3. 100# SANITARY LINE CONNECTION TO SEWAGE TANK SHALL HAVE A MECH. JOINT CONNECTION BETWEEN TANK STUB AND SANITARY LINE.
 4. 1.3# COIL DRAIN LINE FROM FHC-1 SHALL BE CONNECTED TO NEAREST SINK SANITARY LINE.
 5. 75# SANITARY VENT LINE CONNECTION TO SEWAGE TANK SHALL HAVE A MECH. JOINT CONNECTION BETWEEN TANK STUB AND BUILDING SANITARY LINE.
 6. SEWAGE TANK ALARM PANEL SHALL BE LOCATED IN GUARD ROOM AREA.
 7. 1.3# CONDENSATE DRAIN LINE FROM HRV-1 AND HRV-2 SHALL BE CONNECTED TO NEAREST SINK SANITARY LINE.
 8. POTABLE WATER TANK LOW LEVEL ALARM PANEL SHALL BE LOCATED IN GUARD ROOM AREA.
 9. 50# STAND-PIPE FOR POTABLE WATER DRAIN OFF.
 10. PRESSURE TANK C/W PUMP SHALL BE MOUNTED ON WALL. PROVIDE PREFABRICATED BASE C/W BRACKETS FOR WALL INSTALLATION OF THIS ITEM.

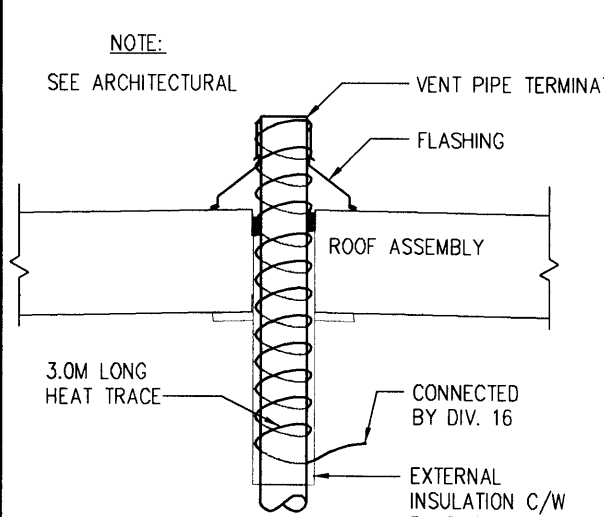
MECHANICAL PIPING LEGEND	
---	DOMESTIC COLD WATER
---	DOMESTIC HOT WATER
---	SANITARY SEWER ABOVE GRADE
---	SANITARY SEWER BELOW GRADE
---	SANITARY VENT LINE
---	CONDENSATE DRAIN ABOVE GRADE
---	PIPING DOWN
---	PIPING UP
---	TEE FITTING DOWN FLOW
---	TEE FITTING UP FLOW
---	BALL VALVE
---	SWING CHECK VALVE
---	PUMP
---	UNION
---	EYE WASH
---	TRAP
---	FUNNEL FLOOR DRAIN
---	FLOOR DRAIN
---	DRAIN
---	CLEANOUT
DRAWING TAGS	
1	DRAWING NOTE No.
SH-3	PLUMBING FIXTURE
UH-1	EQUIPMENT DESIGNATION EQUIPMENT No.



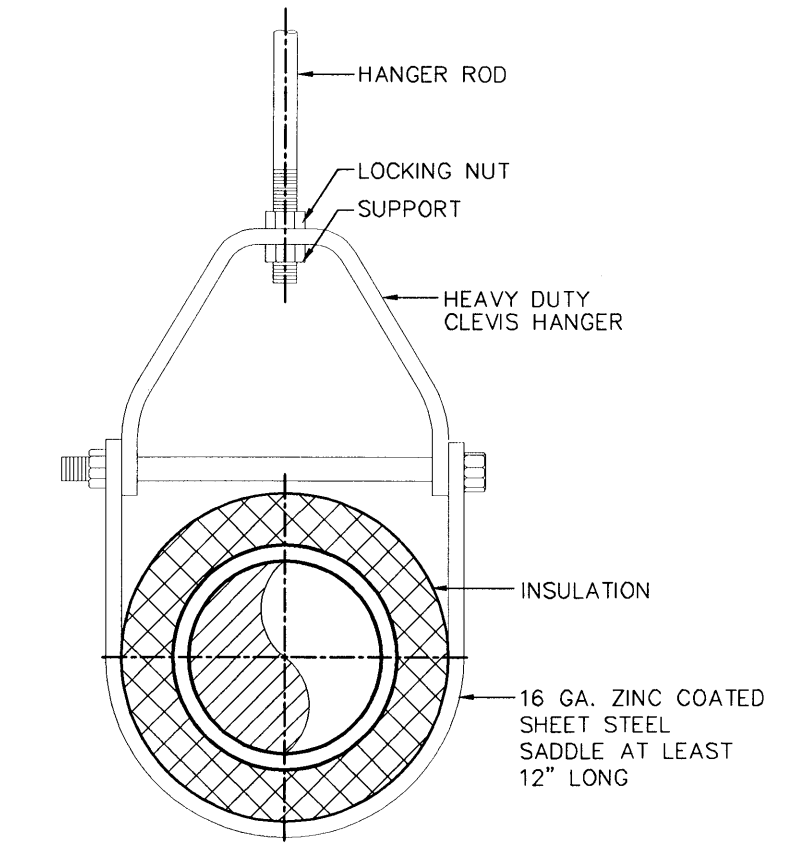
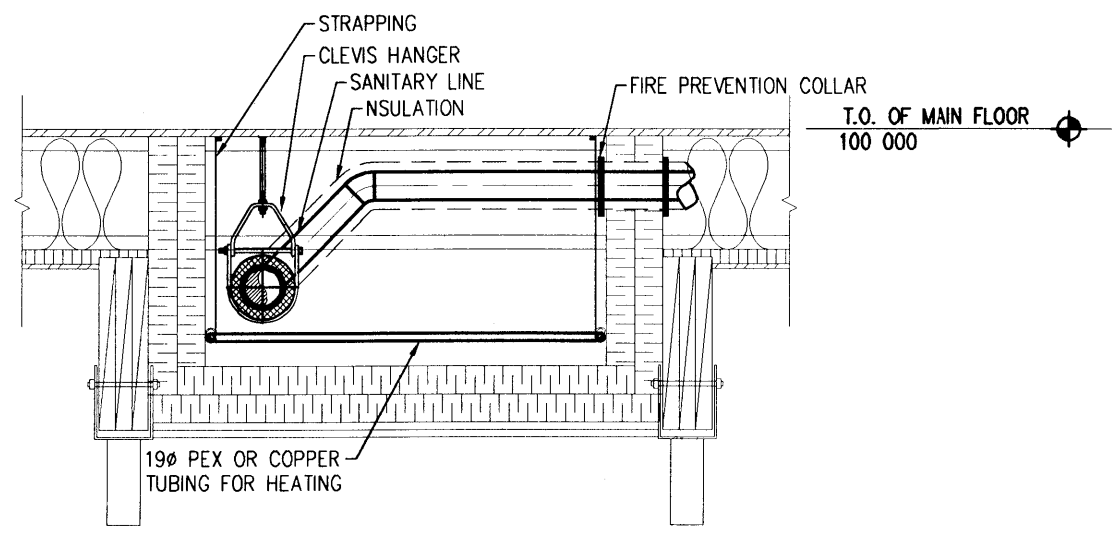
1 MAIN FLOOR PLUMBING PLAN
M1 1:50



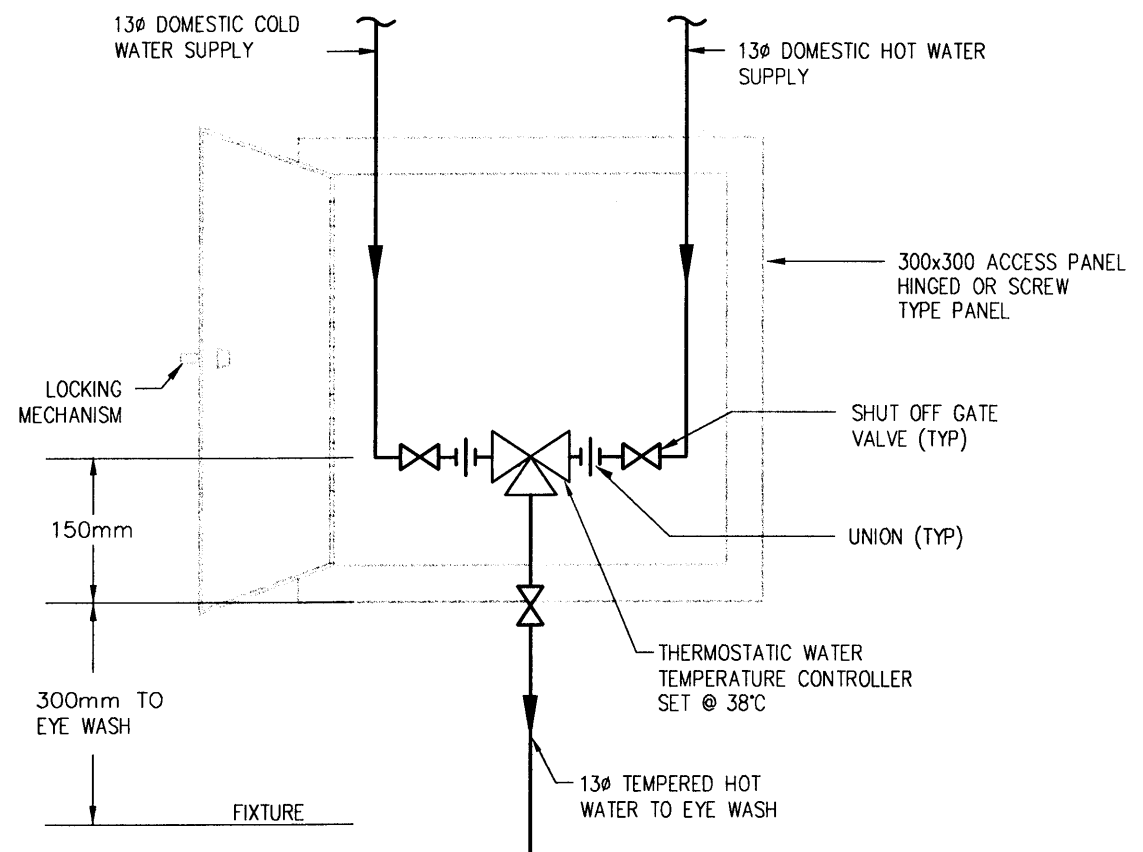
2 TYPICAL SANITARY CONNECTION SINK AND EYE WASH
M1 N.T.S.



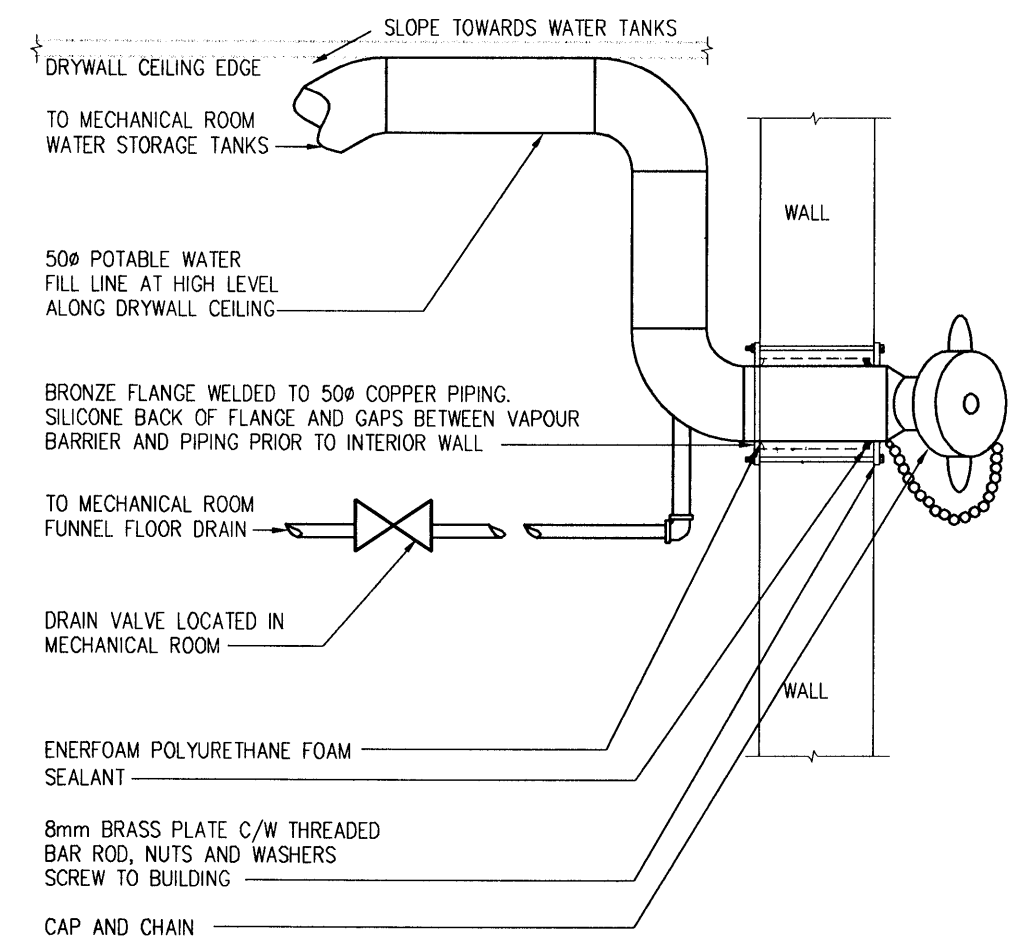
3 VENT PIPE HEAT TRACE DETAIL
M1 N.T.S.



5 CLEVIS HANGER
M1 N.T.S.



6 MIXING VALVE AND ACCESS PANEL DETAIL
M1 N.T.S.



7 POTABLE WATER FILL CAP
M1 N.T.S.

3		
2		
1	APPENDIX NO. 2	03/04/04
revisions	description	date

Client: **ROYAL CANADIAN MOUNTED POLICE**

project title: **NORTHERN DETACHMENT COMMUNITY OFFICE 'V' DIVISION**
REPULSE BAY NUNAVUT TERRITORY

approved by:	R. SUKHAN	approve par:	
designed by:	S. ASSAAD	conçu par:	
drawn by:	D. PEREZ	dessiné par:	
PWGSC Project Manager:	J. DAVIDSON	Administrateur de Projets TPSGC	
PWGSC AES Resources Manager:	S. SINGH	Gestionnaire Ressources SAG TPSGC	

drawing title: **MAIN FLOOR PLUMBING PLAN**

scale:	AS NOTED	échelle:	sheet:	M1
project no.:	409855A	proj. no.:		OF 4
	REV. 01			

- GENERAL NOTES:**
- ALL HOT WATER SUPPLY AND HOT WATER RETURN LINE PENETRATIONS THRU FIRE RATED AREAS SHALL BE FIRE STOPPED WITH APPROVED FIRE STOP SYSTEM.
- DRAWING NOTES:**
- 320 HOT WATER SUPPLY HEADER UP IN CEILING SPACE.
 - ALL WALL FIN SHALL HAVE CABINETS EXTENDING THE FULL LENGTH OF THE WALL.
 - FIRE STOP ALL PIPING PENETRATION THRU FIRE RATED AREAS.
 - ONE PIPE SUPPLY/ RETURN FITTING.
 - PRESSURE TANK C/W PUMP SHALL BE MOUNTED AT HIGH LEVEL AND C/W WALL MOUNTING BRACKET.
 - ALL HEATING LINES AND HEADER SHALL BE C/W INSULATION EXCEPT HEATING LINE IN CHASE SPACE.
 - HEATING LINE FOR CHASE SHALL BE LOCATED IN WALL SPACE AND CONNECTED TO CONTROL VALVE IN WALL SPACE C/W ACCESS PANEL FOR SERVICE. REMOTE SENSOR LOCATED IN CHASE SPACE AND CONNECTED TO T'STAT.
 - 150# FLUE UP TO ROOF.
 - PLACE REMOTE SENSOR ON CHASE SPACE AND CONNECT TO T'STAT.
 - FIRE EXTINGUISHER ABC, 4.5Kg DRY CHEMICAL.

FINNED TUBE RADIATION: Model WF-1A *
Average water temperature: 77° C

Fin #	Room #	Element length (m)	Capacity KW
WF-1	M04	0.5	0.6
WF-2	M01	0.8	0.9
WF-3	M02	0.5	0.6
WF-4	M02	0.8	0.9
WF-5	M07	0.3	0.3
WF-6	M10	0.8	0.9
WF-7	M08	0.8	0.9
WF-8	M08	1	4
WF-9	M09	1	4
WF-10	M22	1	4
WF-11	M18	0.3	0.3
WF-12	M18	0.3	0.3

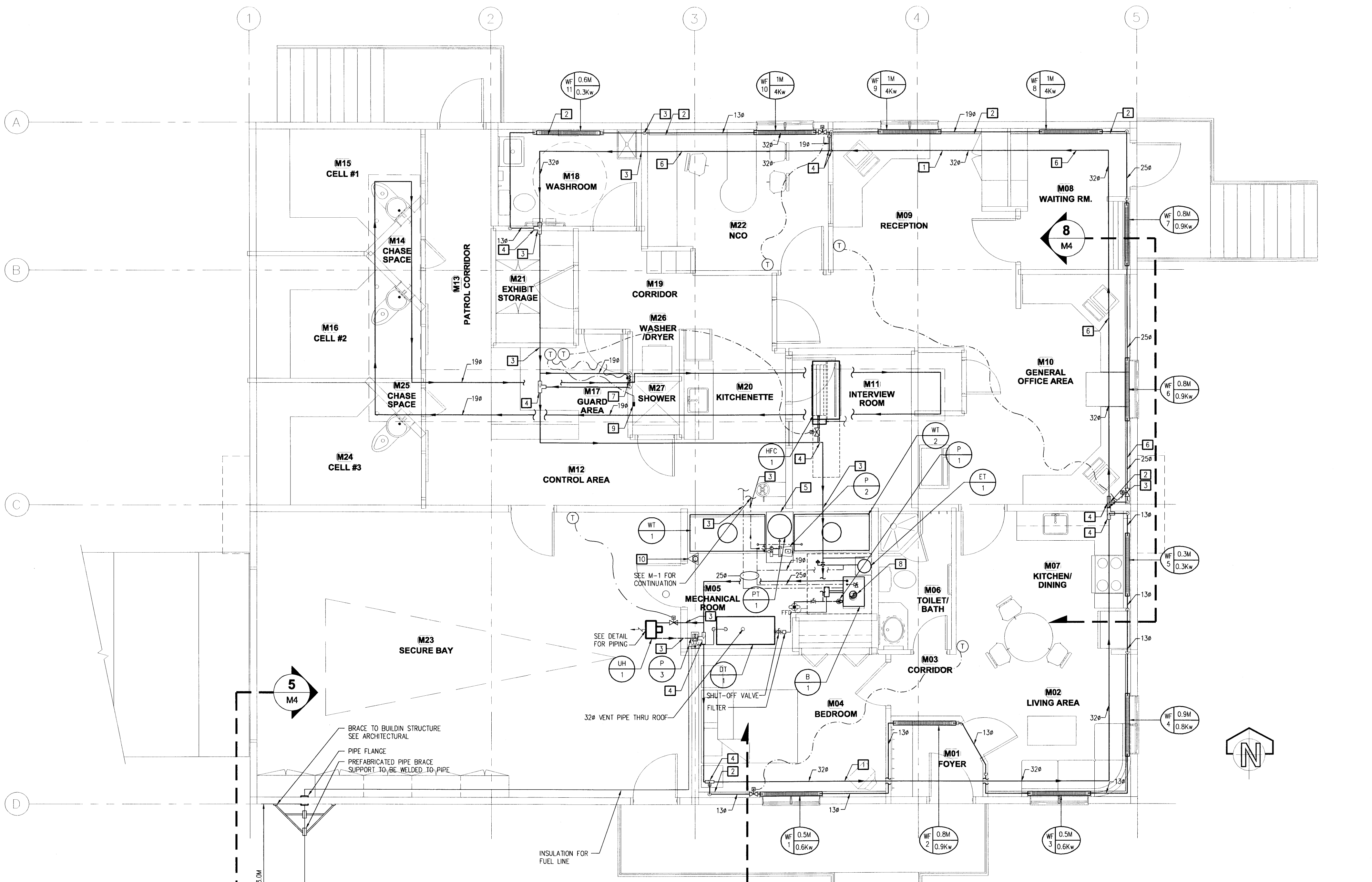
* Based on Engineered Air Product

MECHANICAL HVAC LEGEND

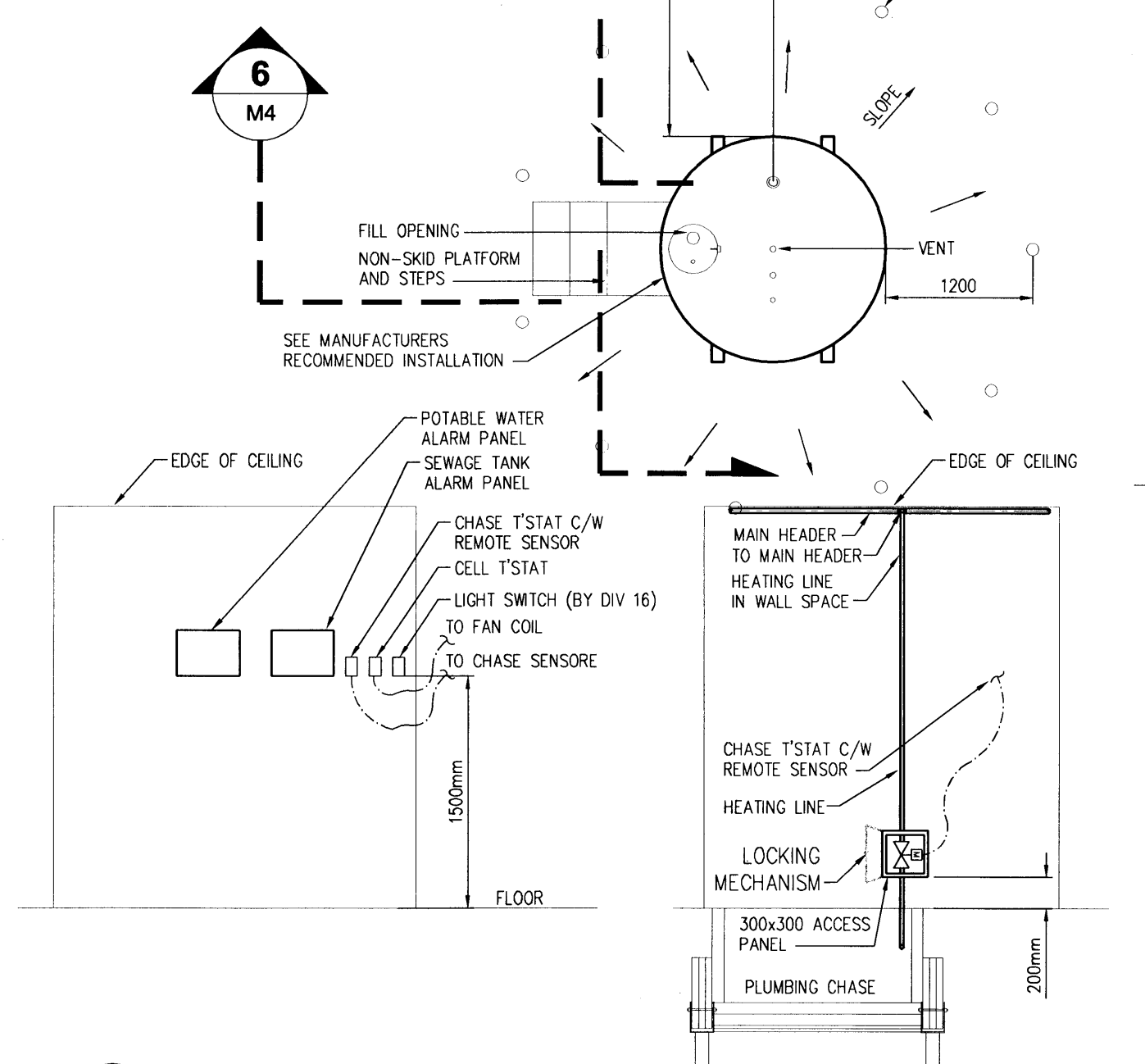
— HWS —	HOT WATER SUPPLY
— HWR —	HOT WATER RETURN
— FOS —	FUEL OIL SUPPLY
— FOR —	FUEL OIL RETURN
— PIPING DOWN —	PIPING DOWN
— PIPING UP —	PIPING UP
— TEE FITTING DOWN FLOW —	TEE FITTING DOWN FLOW
— TEE FITTING UP FLOW —	TEE FITTING UP FLOW
— BALL VALVE —	BALL VALVE
— CONTROL VALVE —	CONTROL VALVE
— 3-WAY CONTROL VALVE —	3-WAY CONTROL VALVE
— BALANCING VALVE —	BALANCING VALVE
— SOLENOID VALVE —	SOLENOID VALVE
— 2 WAY PNEUMATIC VALVE —	2 WAY PNEUMATIC VALVE
— 3 WAY PNEUMATIC VALVE —	3 WAY PNEUMATIC VALVE
— GATE VALVE —	GATE VALVE
— SAFETY RELIEF VALVE —	SAFETY RELIEF VALVE
— NORMALLY CLOSED VALVE —	NORMALLY CLOSED VALVE
— PUMP —	PUMP
— (PIPING) THERMOSTAT —	(PIPING) THERMOSTAT
— TEMPERATURE SENSOR —	TEMPERATURE SENSOR
— PRESSURE GAUGE AND COCK —	PRESSURE GAUGE AND COCK
— PRESSURE GAUGE —	PRESSURE GAUGE
— PRESSURE GATE —	PRESSURE GATE
— STRAINER —	STRAINER
— CAPPED END —	CAPPED END
— UNION —	UNION
— SWING CHECK VALVE —	SWING CHECK VALVE
— SINGLE VENTURI OR INJECTOR FITTING —	SINGLE VENTURI OR INJECTOR FITTING
— DRAIN —	DRAIN
— (ROOM) THERMOSTAT —	(ROOM) THERMOSTAT
— CONTROL LINE —	CONTROL LINE
— UNIT HEATER —	UNIT HEATER
— REMOTE SENSOR —	REMOTE SENSOR
— FLOW DIRECTION —	FLOW DIRECTION
— FIRE EXTINGUISHER (ABC) —	FIRE EXTINGUISHER (ABC)

DRAWING TAGS

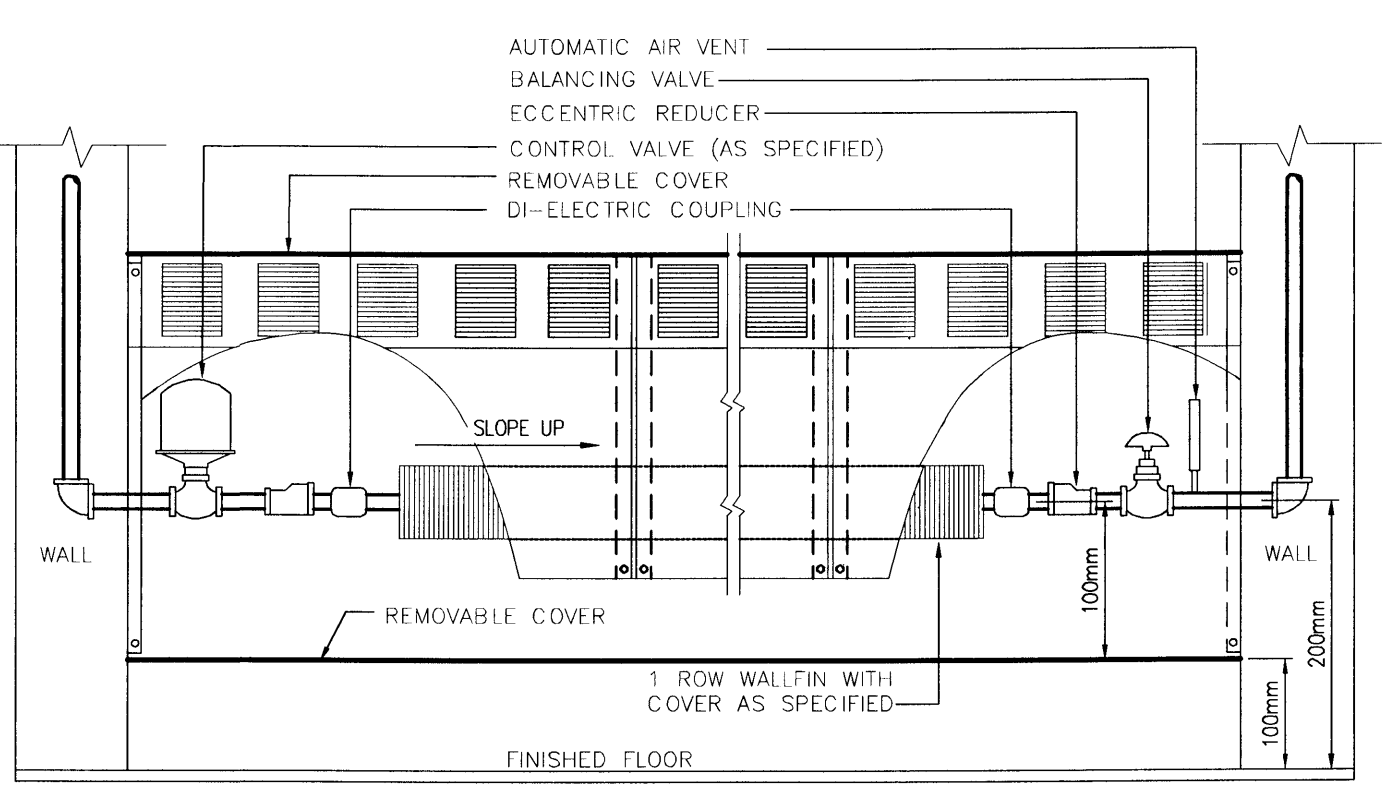
— T —	DRAWING NOTE No.
— UH 1 —	EQUIPMENT DESIGNATION
— UH 1 —	EQUIPMENT No.
— WF LENGTH 1 KW —	WALL FIN LENGTH
— WF LENGTH 1 KW —	CAPACITY
— WF LENGTH 1 KW —	WALL FIN DESIGNATION



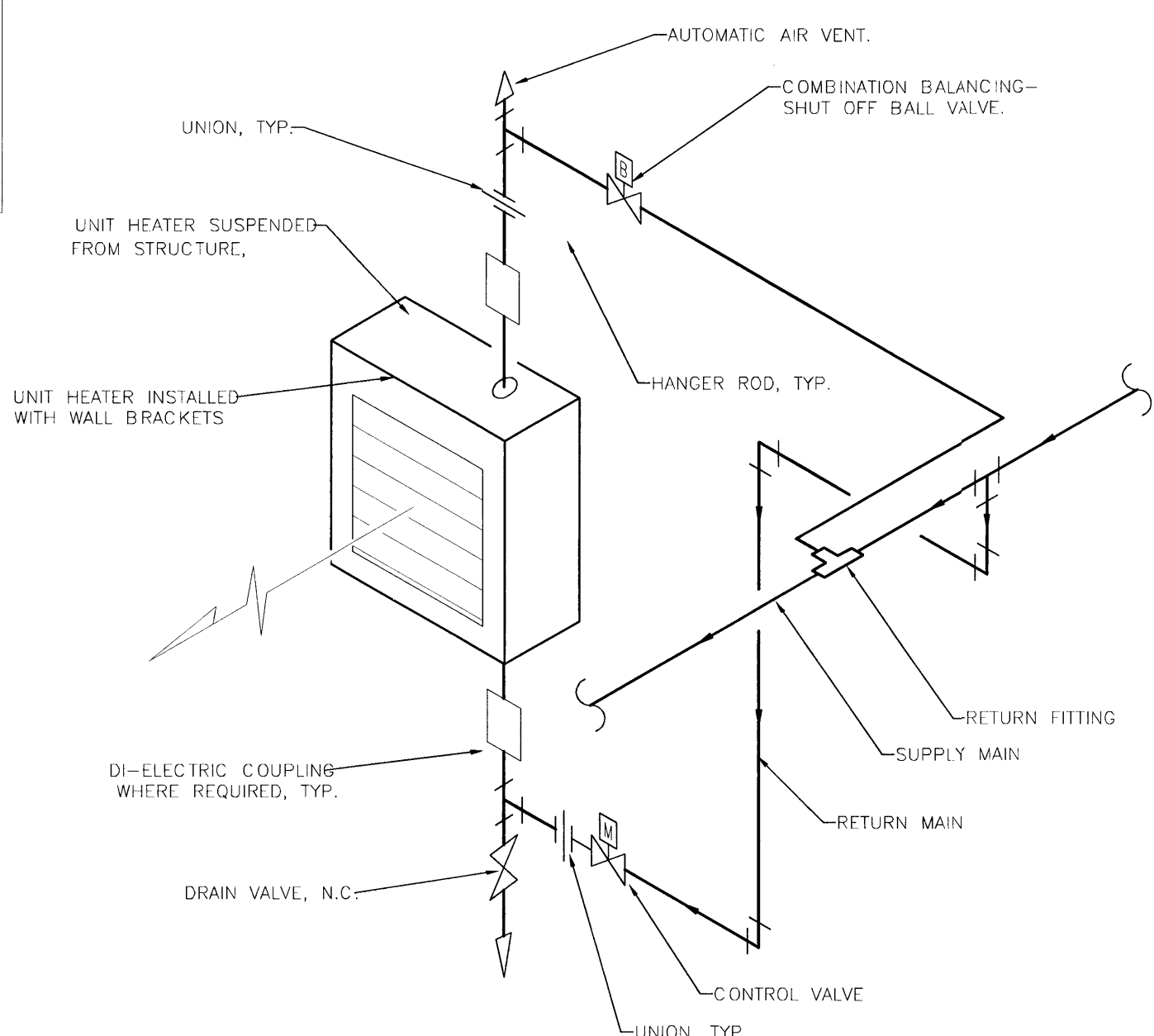
1 MAIN FLOOR HEATING PLAN
1:50



2 GUARD ROOM PANEL LOCATIONS
N.T.S.



3 WALL FIN DETAIL
N.T.S.



4 HOT WATER UNIT HEATER DETAIL
N.T.S.

3		
2		
1	ADDENDUM NO. 2	03/04/04

revisions	description	date
3		
2		
1	ADDENDUM NO. 2	03/04/04

Client: **ROYAL CANADIAN MOUNTED POLICE**

Client: **NORTHERN DETACHMENT COMMUNITY OFFICE 'V' DIVISION**
REPULSE BAY NUNAVUT TERRITORY

approved by: **R.SUKHAN**

designed by: **S.ASSAAD**

drawn by: **D.PEREZ**

PWSSC Project Manager: **J.DAVIDSON**

PWSSC AES Resources Manager: **S. SINGH**

drawing title: **MAIN FLOOR HEATING PLAN**

scale: AS NOTED	echelle: AS NOTED	sheet: M2	feuille: OF 4
project no. 409855A	project no. 409855A		
REV. 01			

GENERAL NOTES:

1. DUCTWORK AND VENTILATION EQUIPMENT SHALL BE PLACED AS HIGH AS POSSIBLE. VENTILATION EQUIPMENT SHALL BE PLACED 300mm FROM TOP OF UNIT TO UNDER SIDE OF DRYWALL CEILING SPACE.
2. FAN COIL UNITS SHALL BE PLACED IN A MANNER THAT WILL NOT INTERFERE WITH THE SERVING OF THE COIL AND THE FILTER.
3. DUCTWORK CROSSING OTHER DUCTWORK SHALL BE PLACED IN A MANNER THAT WILL NOT INTERFERE WITH THE INSTALLATION OF THE THERMAL INSULATION BETWEEN DUCTWORK.
4. SEE ARCHITECTURAL FOR ACCESS PANELS FRAMING. 600x600 ACCESS PANEL TYPICAL IN DRYWALL CEILING COMPLETE WITH SECURITY LOCK.

DRAWING NOTES:

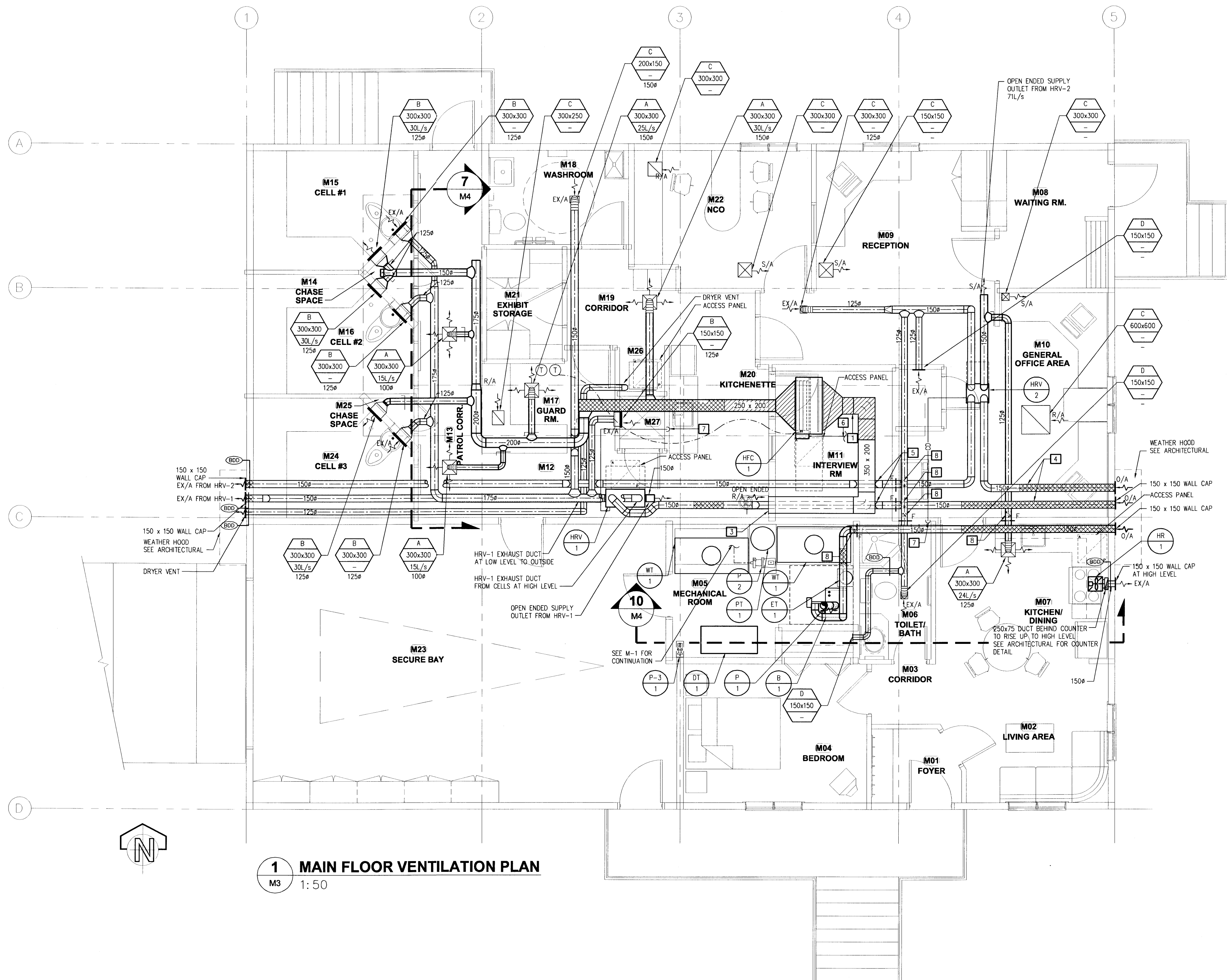
- 1 ALL RETURN AIR DUCTS TO FAN COIL UNITS SHALL BE ACoustically LINED AND C/W SOUND ELBOW. EXTEND RETURN AIR DUCT FROM FAN COIL UNIT A DISTANCE OF 1800mm.
- 2 ALL SUPPLY AIR DUCTS FROM FAN COIL UNITS SHALL BE ACoustically LINED FOR A DISTANCE OF 1800mm.
- 3 OPEN ENDED DUCTWORK PENETRATING THRU WALLS SHALL BE FLARED OUT 25mm ALL AROUND DUCTWORK AND SCREWED TO THE WALL.
- 4 OUTSIDE AIR DUCTS AND COMBUSTION AIR DUCT TO HAVE THERMAL INSULATION.
- 5 ALLOW ROOM FOR DUCTWORK INSULATION WHEN CROSSING UNDER DUCTS 75mm BETWEEN DUCTWORK TO DUCTWORK.
- 6 13# CONDENSATE DRAIN LINE FROM FAN COIL SHALL BE CONNECTED TO NEAREST SANITARY LINE.
- 7 13# CONDENSATE DRAIN LINE FROM HRV-1 AND HRV-2 SHALL BE CONNECTED TO NEAREST SANITARY LINE.
- 8 FIRE DAMPER ACCESS DOOR.

MECHANICAL HVAC LEGEND

	RETURN DUCTWORK UP
	RETURN DUCTWORK DOWN
	SUPPLY DUCTWORK DOWN
	HIDDEN DUCT WORK
	ACoustically LINED SOUND ELBOW
	DUCTWORK C/W THERMAL INSULATION
	DIFFUSER
	FLEX CONNECTION
	FIRE EXTINGUISHER (ABC)
	(ROOM) THERMOSTAT
	HUMIDITY CONTROL STAT
	CONTROL LINE
	MOTORIZED DAMPER
	BACK DRAFT DAMPER
	EXHAUST FAN
	BALANCE DAMPER
	FIRE DAMPER
	ACCESS DOOR
	ACCESS PANEL
	AIR FLOW DIRECTION

DRAWING TAGS

	DRAWING NOTE No.
	EQUIPMENT DESIGNATION
	EQUIPMENT No.
	No. OF DIFFUSERS
	GRILLE TYPE
	GRILLE SIZE
	AIR VOLUME
	NECK SIZE (mm)



1 MAIN FLOOR VENTILATION PLAN
M3 1:50

3		
2		
1	ADDENDUM NO. 2	03/04/04

Client: **ROYAL CANADIAN MOUNTED POLICE**

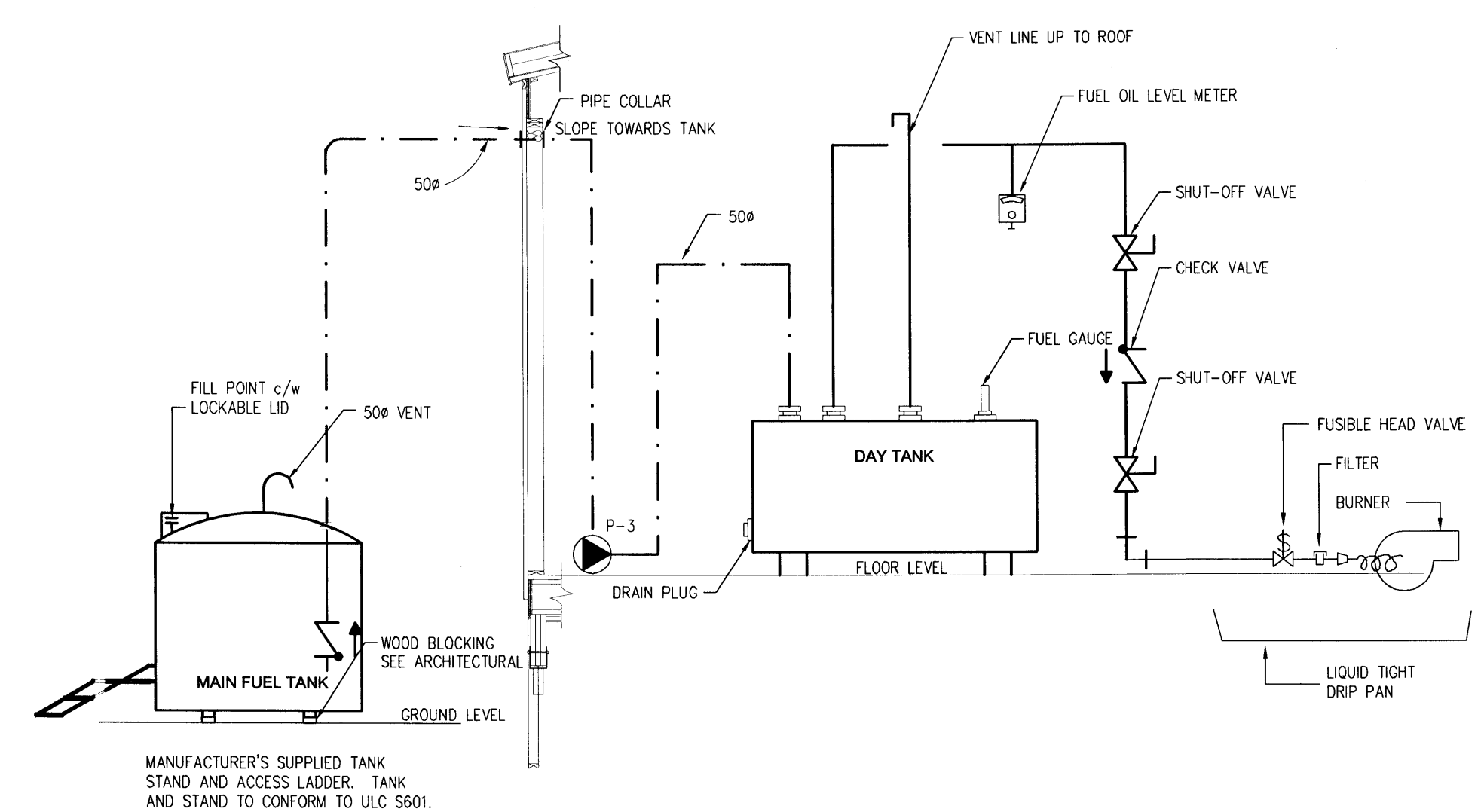
project title / titre du projet: **NORTHERN DETACHMENT COMMUNITY OFFICE 'V' DIVISION REPULSE BAY NUNAVUT TERRITORY**

approved by / approuvé par: **R.SUKHAN**
 designed by / conçu par: **S.ASSAAD**
 drawn by / dessiné par: **D.PEREZ**
 PWOSC Project Manager / Administrateur de Projets TPSGC: **J.DAVIDSON**
 PWOSC AES Resources Manager / Gestionnaire Ressources SAG TPSGC: **S. SINGH**

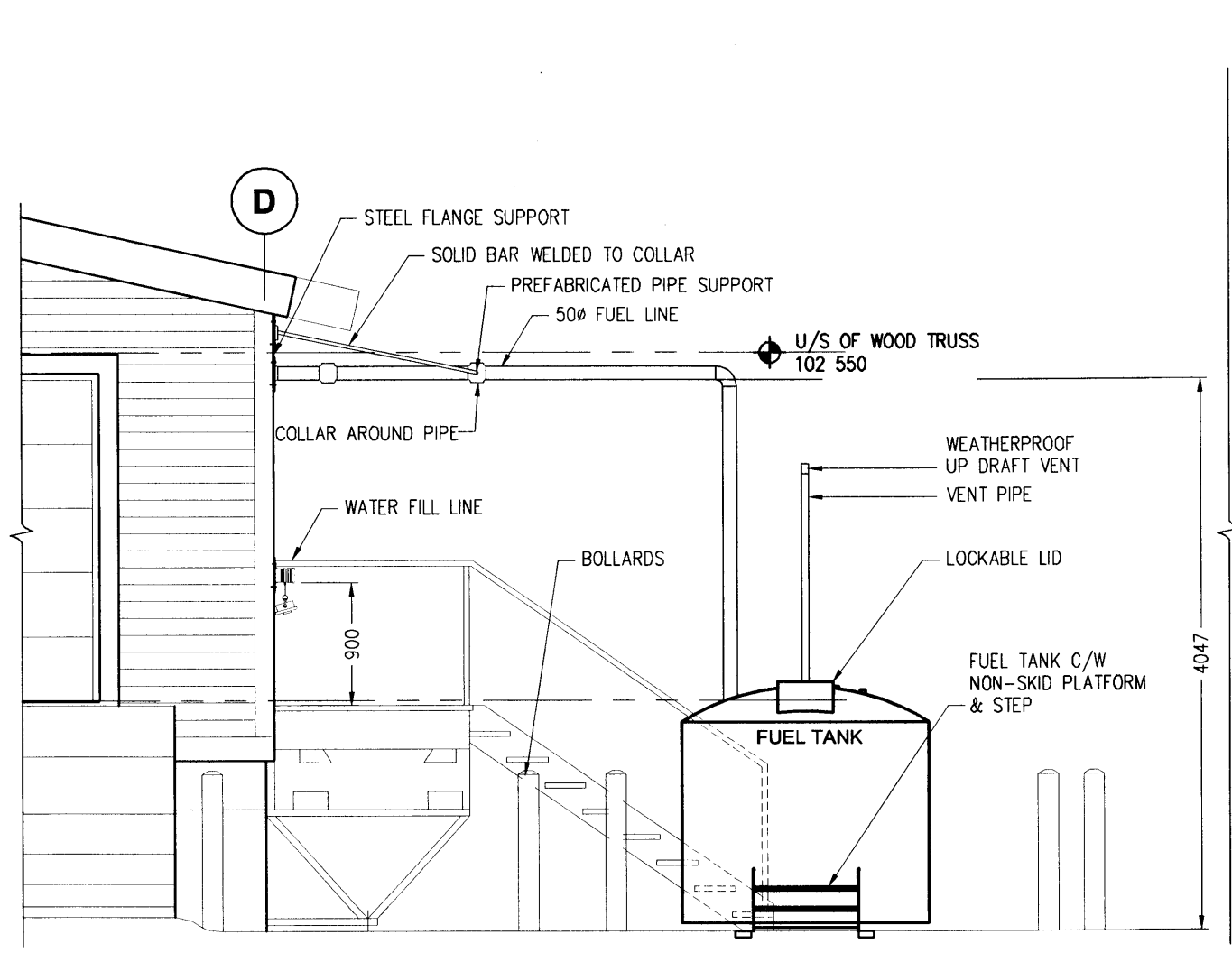
drawing title / titre du dessin: **MAIN FLOOR VENTILATION PLAN**

GENERAL NOTES:

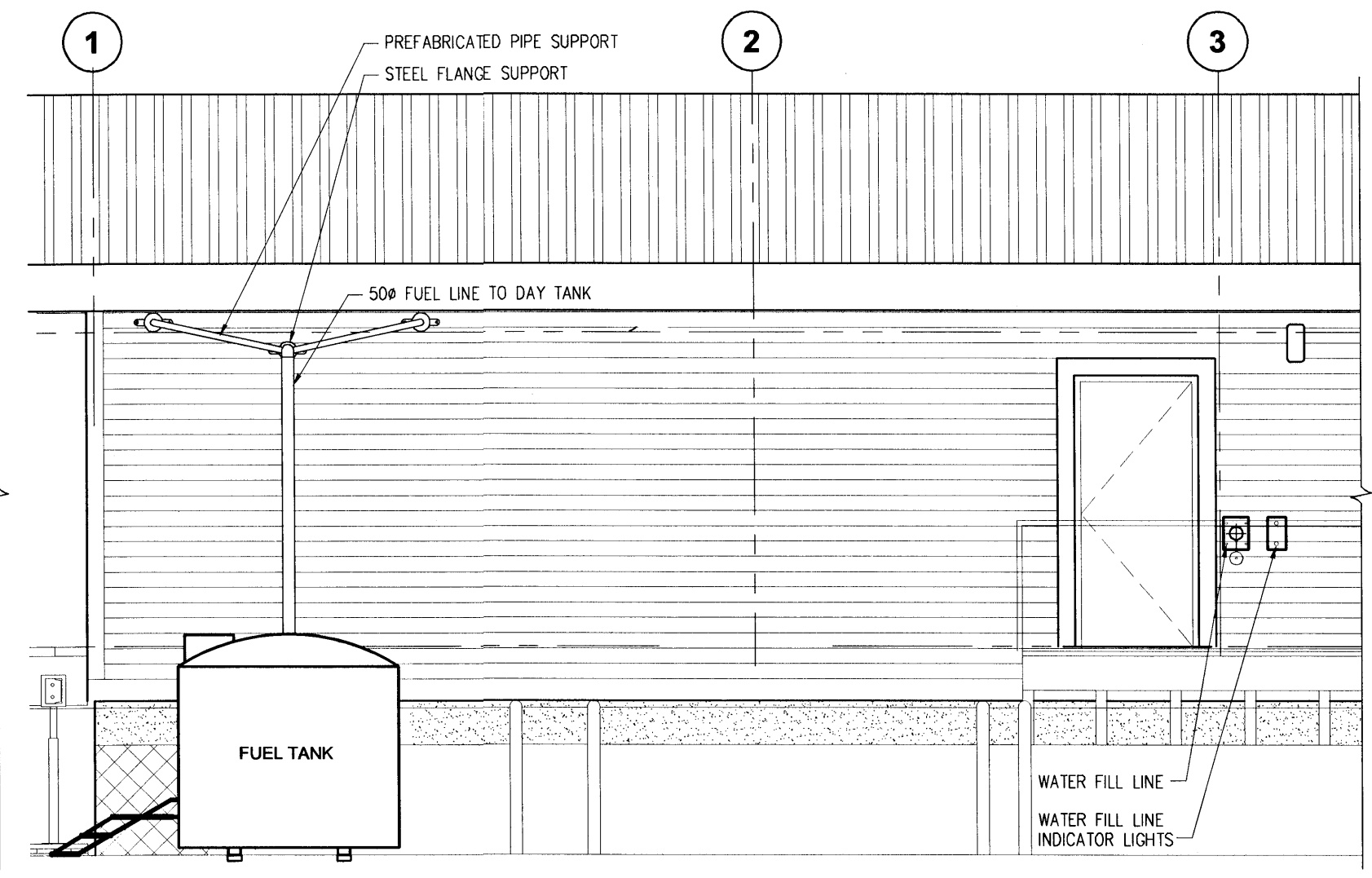
1. ALL HOT WATER SUPPLY AND HOT WATER RETURN LINE PENETRATIONS THRU FIRE RATED AREAS SHALL BE FIRE STOPPED



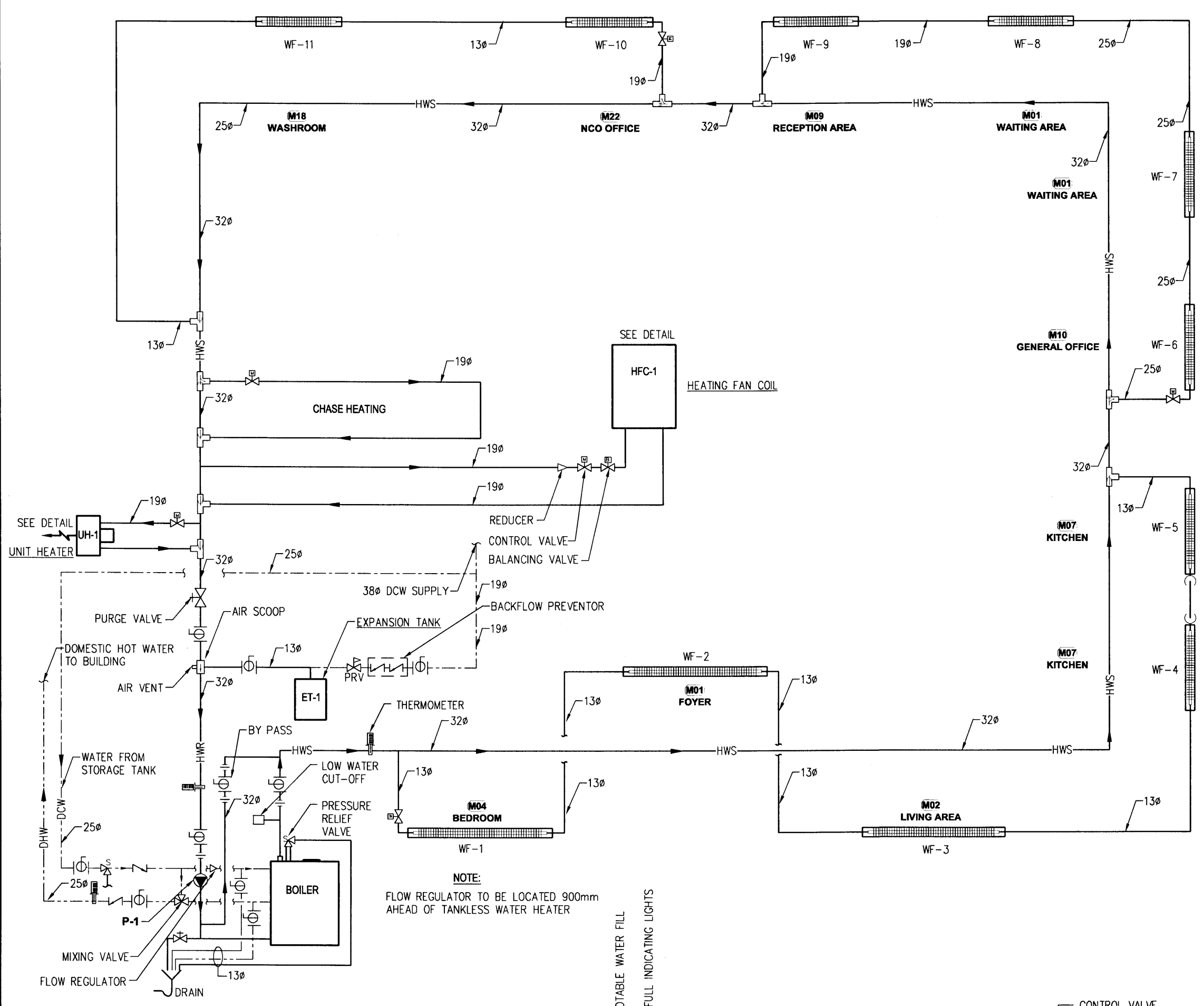
1 FUEL OIL SCHEMATIC
M4 N.T.S.



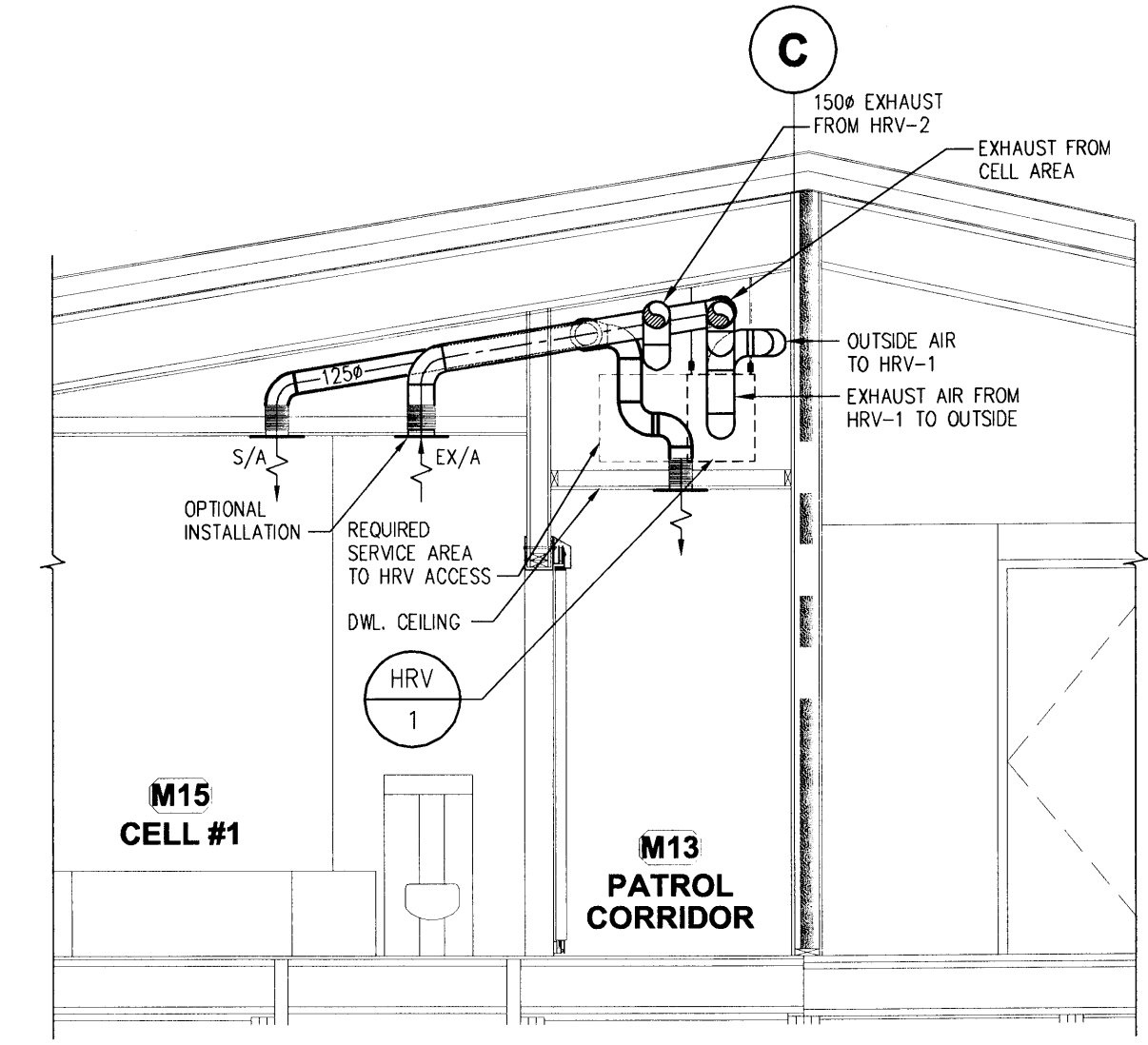
5 FUEL OIL STORAGE TANK (WEST ELEVATION)
M4 1:50



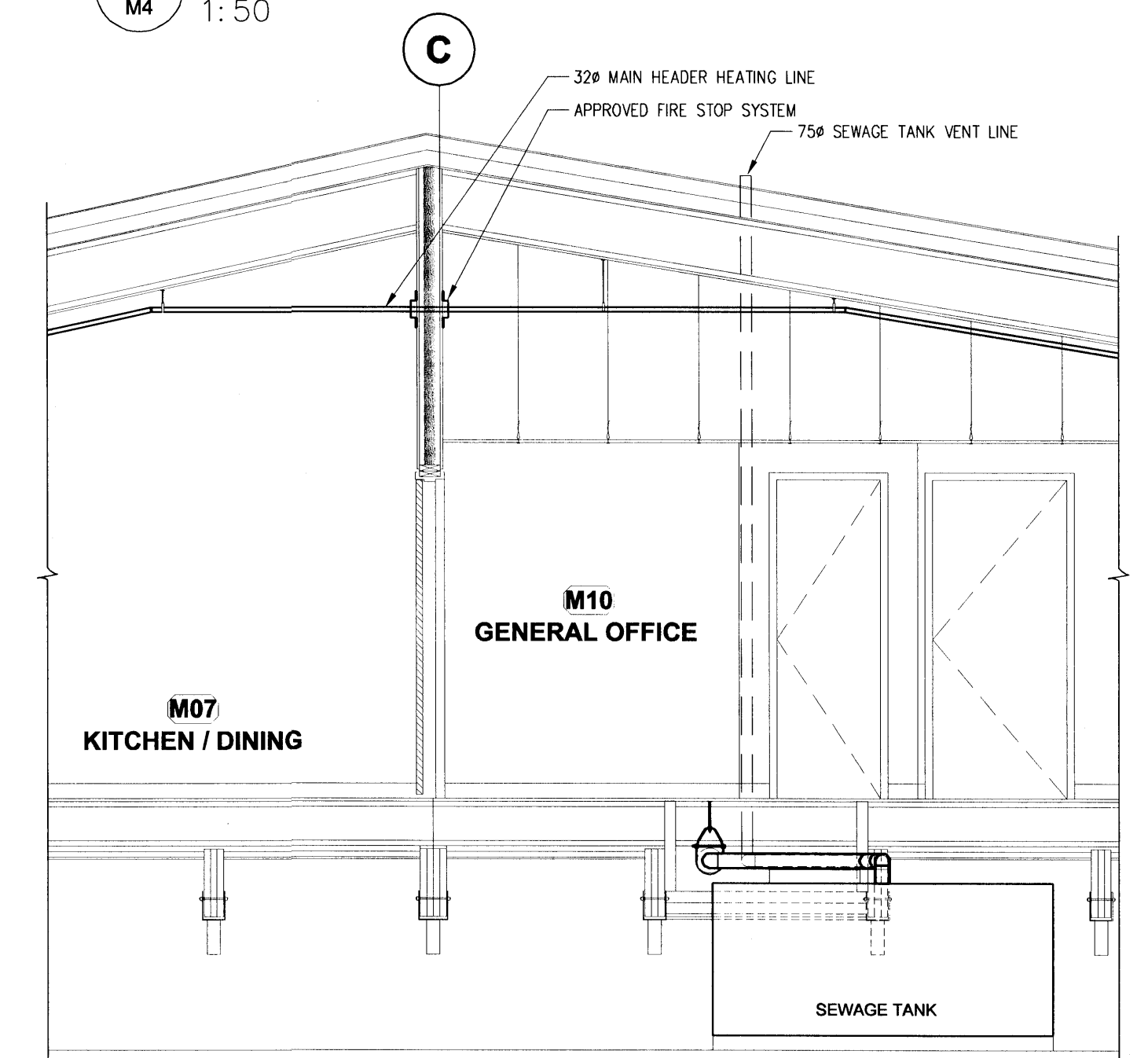
6 FUEL OIL STORAGE TANK (SOUTH ELEVATION)
M4 1:50



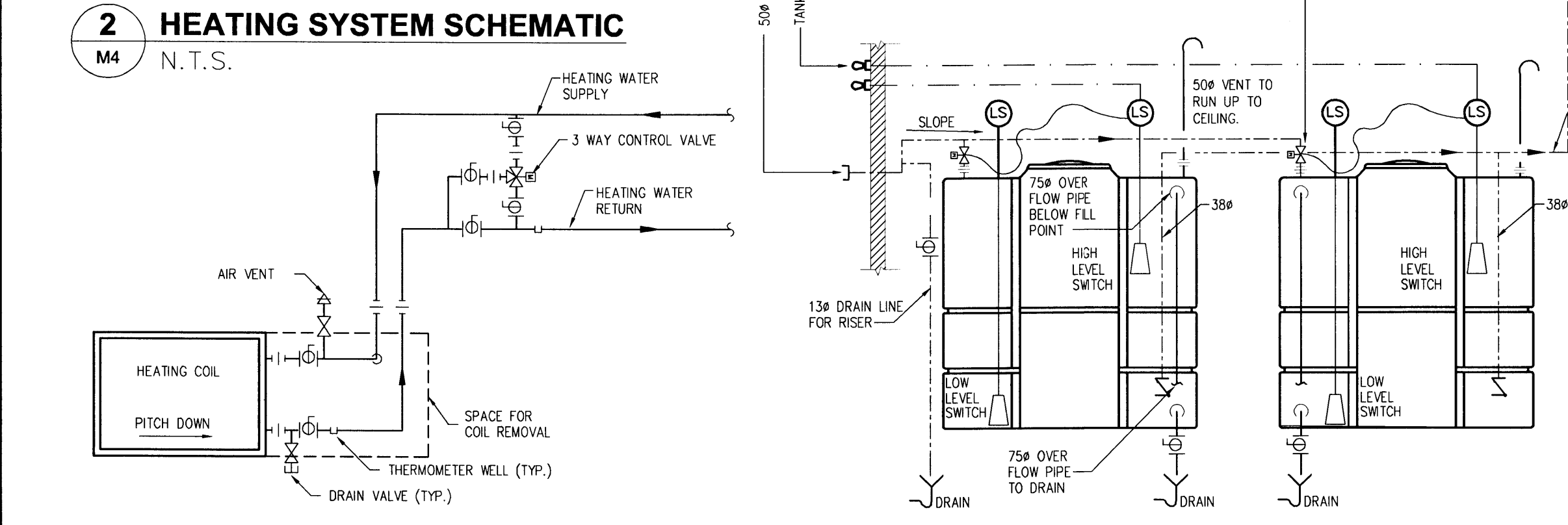
2 HEATING SYSTEM SCHEMATIC
M4 N.T.S.



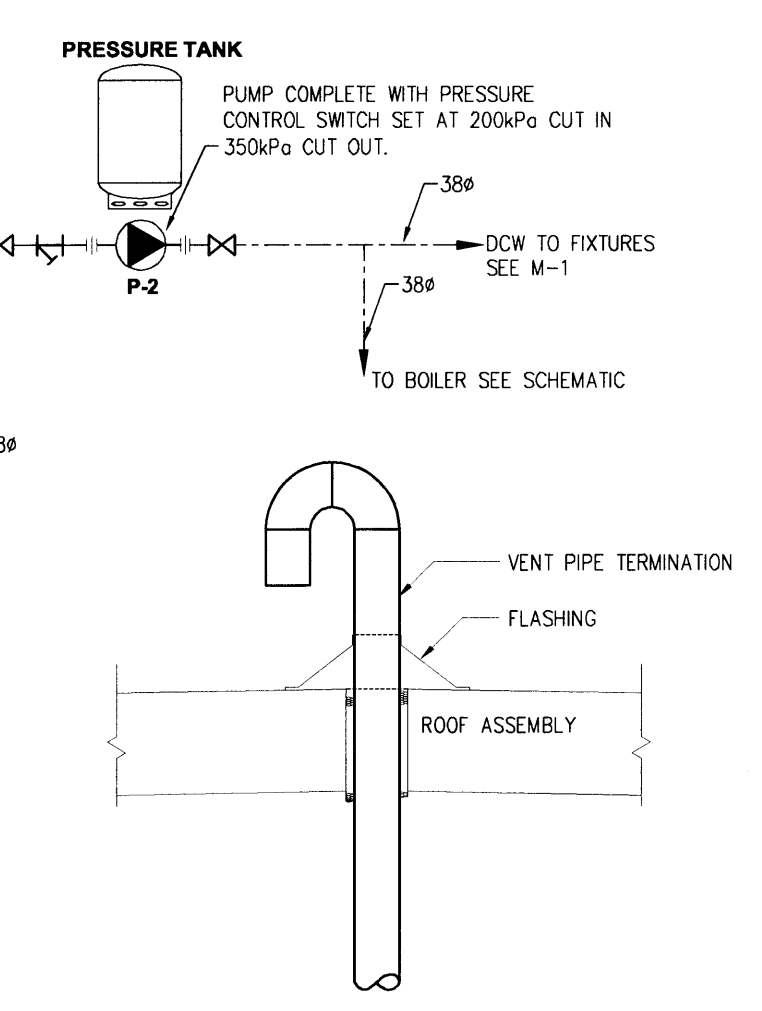
7 PARTIAL HRV CELL AREA SECTION
M4 1:40



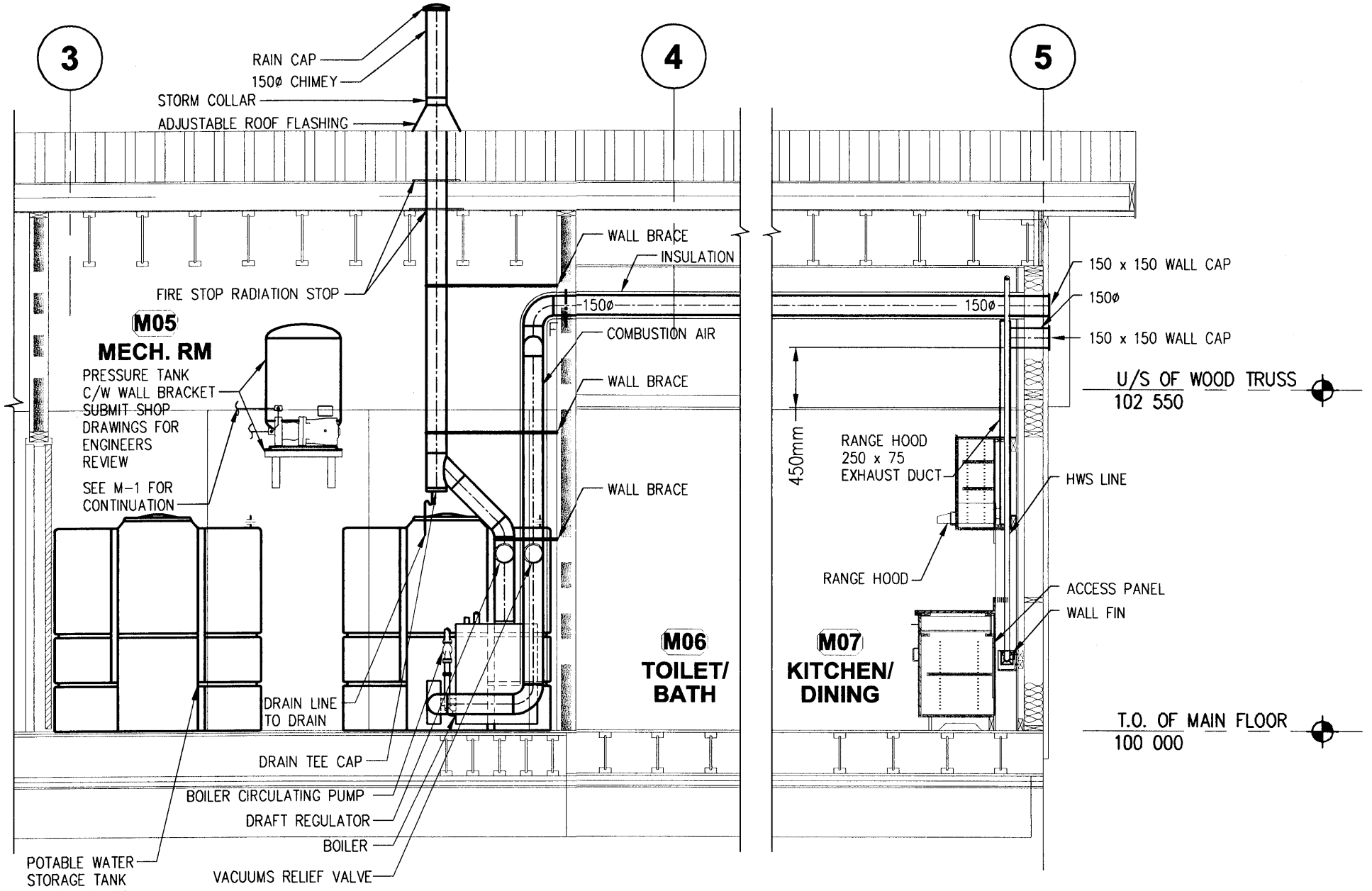
8 PARTIAL SEWAGE TANK SECTION
M4 1:50



4 POTABLE WATER SCHEMATIC
M4 N.T.S.



9 DAY TANK VENT PENETRATION THRU ROOF
M4 N.T.S.



10 PARTIAL MECH. RM SECTION AND PARTIAL KITCHEN SECTION
M4 1:40

3 HEATING COIL PIPING DETAIL
M4 N.T.S.

3		
2		
1	ADDENDUM NO. 2	03/04/04
revisions	description	date

Client: **ROYAL CANADIAN MOUNTED POLICE**

Project title: **NORTHERN DETACHMENT COMMUNITY OFFICE 'V' DIVISION**
REPULSE BAY NUNAVUT TERRITORY

approved by: **R. SUKHAN**
designed by: **S. ASSAAD**
drawn by: **D. PEREZ**
PWSC Project Manager: **J. DAVIDSON**
PWSC AES Resources Manager: **S. SINGH**

drawing title: **HVAC DETAILS, SCHEMATICS AND SECTIONS**

scale: AS NOTED	echelle:	sheet: M4	feuille: 4
project no.: 409855A	proj. no.:		
REV. 01			