

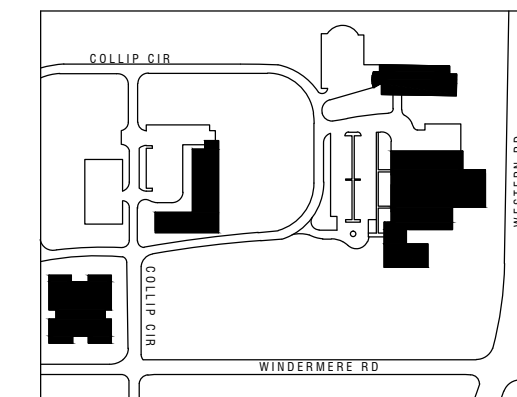
NATIONAL RESEARCH COUNCIL FACTORY OF THE FUTURE

800 COLLIP CIR
LONDON, ONTARIO

MECHANICAL DRAWINGS LIST

DRAWING NUMBER	DRAWING TITLE
GENERAL	
0200-M01	MECHANICAL DRAWING LIST AND LEGENDS
0200-M02	MECHANICAL LEGENDS
DEMOLITION	
0200-M03	RECEPTION AREA DEMOLITION
0200-M04	LEVEL 1 DEMOLITION PLUMBING
0200-M05	LEVEL 1 DEMOLITION HVAC
0200-M06	LEVEL 1 DEMOLITION FIRE PROTECTION
0200-M07	ROOF DEMOLITION HVAC

1
0200-M01 MECHANICAL DRAWINGS LIST



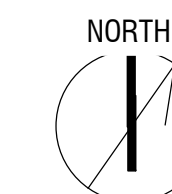
ISSUED:

No.	Date	Description
1	2016-12-16	ISSUED FOR TENDER



Smith + Andersen

148 Fullarton St. Suite 1400 London Ontario N6A 5P3
519 963 8888 www.smithandandersen.com



NRC Factory of the Future Demolition Package 2

800 Collip Cir, London, ON N6G 4X8

drawing MECHANICAL DRAWING LIST AND LEGENDS dessin

designed	conçu	date	date
R.E.		2016-12-13	
drawn	dessiné	scale:	échelle
P.C.		N.T.S.	
checked	vérifié	sheet	feuille
SM			
approved	approuvé	W.O. no	D.T. no
SM			

dwg.no. dessin no.

0200-M01

SYMBOL	DESCRIPTION	SYMBOL	DESCRIPTION
	DETAIL NUMBER		SECTION NUMBER
	DRAWING NUMBER		DRAWING NUMBER
	REVISION NUMBER		REVISION BUBBLE
	ELBOWS		PIPING SERVICE CONTINUES
	TEE		REFER TO STANDARD DETAIL DRAWINGS FOR ADDITIONAL REQUIREMENTS OF EQUIPMENT NOTED
	BRANCH OFF BOTTOM OF MAIN		
	BRANCH OFF TOP OF MAIN		
	DIRECTION OF FLOW		

NOTE: EXISTING EQUIPMENT, PIPING, VALVES, DUCTWORK SHOWN LIGHT TO REMAIN

	EXISTING DUCT, FLEX. DUCT AND AIR SUPPLY TO REMAIN		EXISTING CONCEALED SPRINKLER HEAD & PIPING TO REMAIN
	EXISTING ELECTRIC THERMOSTAT		EXISTING PENDANT SPRINKLER HEAD & PIPING TO REMAIN
	EXISTING UPRIGHT SPRINKLER HEAD & PIPING TO REMAIN		EXISTING SIDEWALL OR WINDOW SPRINKLER HEAD & PIPING TO REMAIN

NOTE: EXISTING EQUIPMENT SHOWN HATCHED TO BE REMOVED AND/OR RELOCATED.

	EXISTING DUCT, FLEX. DUCT AND AIR SUPPLY TO BE REMOVED		EXISTING CONCEALED SPRINKLER HEAD TO BE REMOVED/RELOCATED
	EXISTING ELECTRIC THERMOSTAT/TEMPERATURE SENSOR TO BE REMOVED/RELOCATED		EXISTING PENDANT SPRINKLER HEAD TO BE REMOVED/RELOCATED
	EXISTING UPRIGHT SPRINKLER HEAD TO BE REMOVED/RELOCATED		EXISTING SIDEWALL OR WINDOW SPRINKLER HEAD TO BE REMOVED/RELOCATED

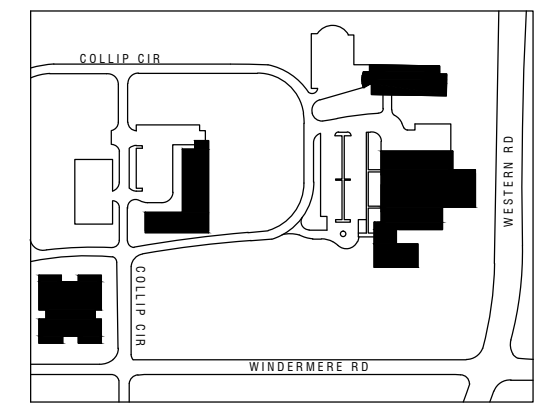
NOTE: NOT ALL SYMBOLS APPLY, REFER TO FLOOR PLANS AND DRAWINGS

2 GENERAL TENANT LEGEND
0200-M02 (MSD-012.12)

SYMBOL	DESCRIPTION	SYMBOL	DESCRIPTION
	FIRE LINE		PENDANT SPRINKLER HEAD
	FLOW SWITCH		DRY PENDANT SPRINKLER HEAD
	SUPERVISED VALVE		UPRIGHT SPRINKLER HEAD
	FIRE STANDPIPE		CONCEALED SPRINKLER HEAD
	DELUGE SYSTEM VALVE		NON-FREEZE SPRINKLER HEAD
	WET PIPE VALVE		HIGH TEMPERATURE SPRINKLER HEAD
	DRY SYSTEM VALVE		CHEMICAL SPRINKLER HEAD
	PREACTION SYSTEM VALVE		SIDEWALL SPRINKLER HEAD
	FIRE HYDRANT		WINDOW SPRINKLER HEAD
	FIRE GONG		
	SIAMESE CONNECTION		
	WET SPRINKLER		
	DRY SPRINKLER		
	FIRE HOSE CABINET AND TYPE		
	SPRINKLER SHUT-OFF VALVE CABINET AND TYPE		
	FIRE EXTINGUISHER AND TYPE		
	FIRE EXTINGUISHER CABINET AND TYPE		
	FIRE REEL AND TYPE		

NOTE: NOT ALL SYMBOLS APPLY, REFER TO FLOOR PLANS AND DRAWINGS

1 FIRE PROTECTION
0200-M02 (MSD-012.06)



ISSUED:

No.	Date	Description
1	2016-12-16	ISSUED FOR TENDER



Smith + Andersen

148 Fullarton St. Suite 1400 London Ontario N6A 5P3
519 963 8888 www.smithandandersen.com



NRC Factory of the Future
Demolition Package 2

800 Collip Cir, London, ON N6G 4X8

drawing MECHANICAL LEGENDS dessin

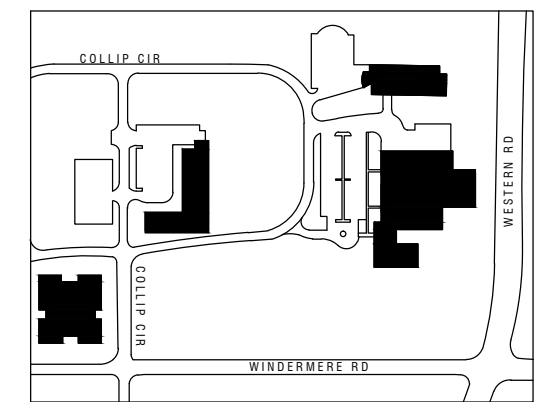
designed	conçu	date	date
R.E.		2016-12-13	
drawn	dessiné	scale:	échelle
P.C.		N.T.S.	
checked	vérifié	sheet	feuille
SM			
approved	approuvé	W.O. no	D.T. no
SM			

dwg.no. dessin no.

0200-M02

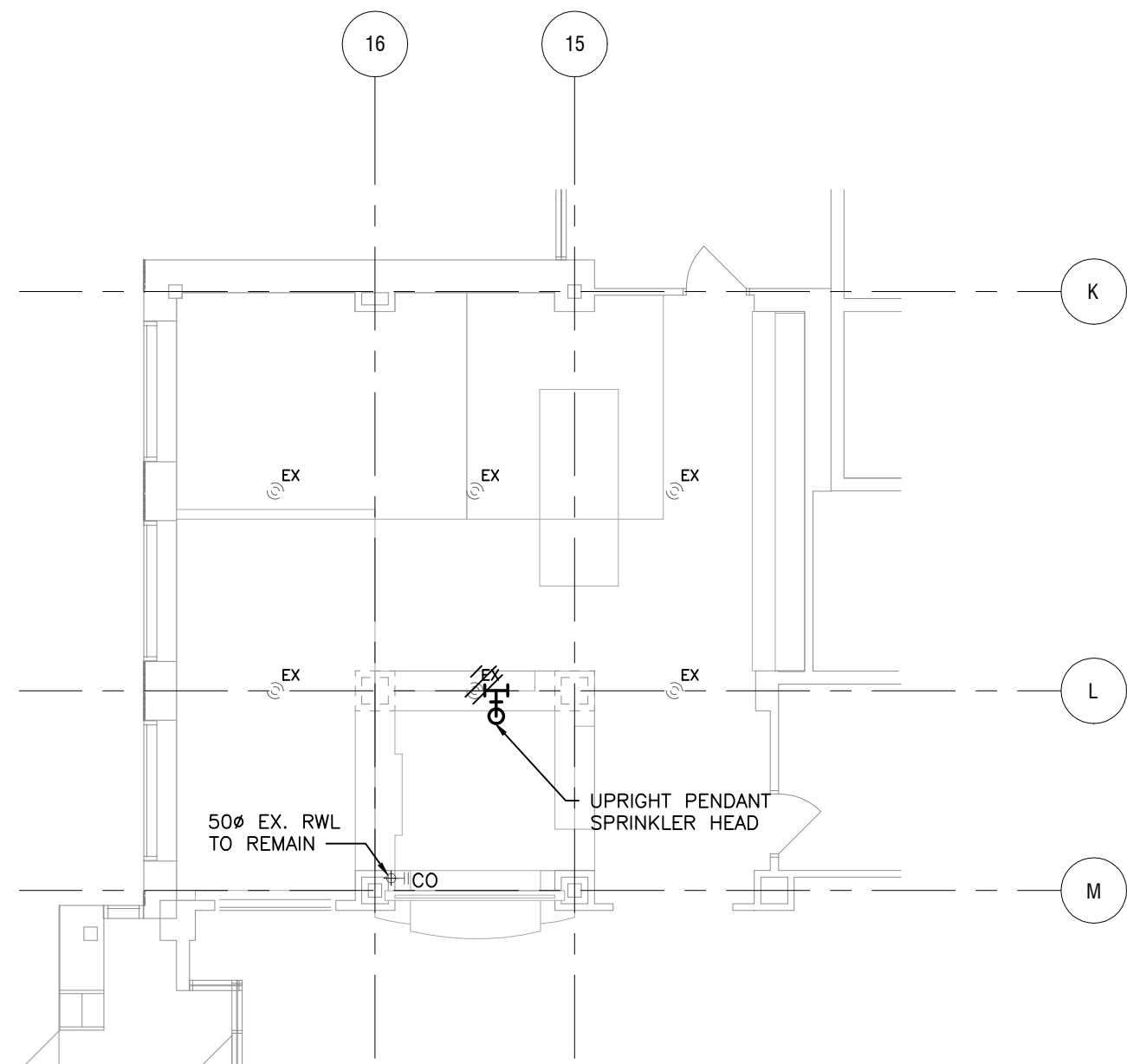
DEMOLITION NOTES:

- DO NOT SCALE DRAWINGS. THE LOCATIONS OF ALL ITEMS SHOWN ON THE DRAWINGS OR SPECIFIED THAT ARE NOT DEFINITELY FIXED BY DIMENSIONS ARE APPROXIMATE ONLY. THE EXACT LOCATIONS NECESSARY TO SECURE THE BEST CONDITIONS AND RESULTS MUST BE DETERMINED BY THE SITE CONDITIONS. REVIEW ALL REVISIONS WITH THE CONSULTANT.
- ENSURE ALL LIVE SERVICES ARE ISOLATED PRIOR TO DISCONNECTING EQUIPMENT.
- CO-ORDINATE DEMOLITION OF ALL MECHANICAL SITE SERVICES, PIPING AND EQUIPMENT WITH ALL OTHER DIVISIONS.
- ALL MATERIAL FROM MECHANICAL SERVICE DEMOLITION, FOR ALL EXISTING PLUMBING, HVAC AND FIRE PROTECTION IS TO BE DISPOSED OF AND REMOVED FROM SITE.
- THE DEMOLITION DRAWINGS SHOW THE GENERAL SCOPE OF THE DEMOLITION OF THE EXISTING UTILITIES AND INCOMING SERVICES AND NOT EXACT DETAILS OR TOTAL EXTENT. THE SCOPE OF MECHANICAL DEMOLITION IS FOR COMPLETE REMOVAL OF ALL PLUMBING, HVAC, AND FIRE PROTECTION SERVICES. THERE ARE NO DRAWINGS AVAILABLE TO OUTLINE THIS SCOPE OF WORK. PRIOR TO SUBMITTING THE DEMOLITION BID PRICE, IT IS THE RESPONSIBILITY OF THE MECHANICAL DEMOLITION CONTRACTOR TO REVIEW THE SITE AND ALLOW FOR REMOVAL OF ALL SERVICE.

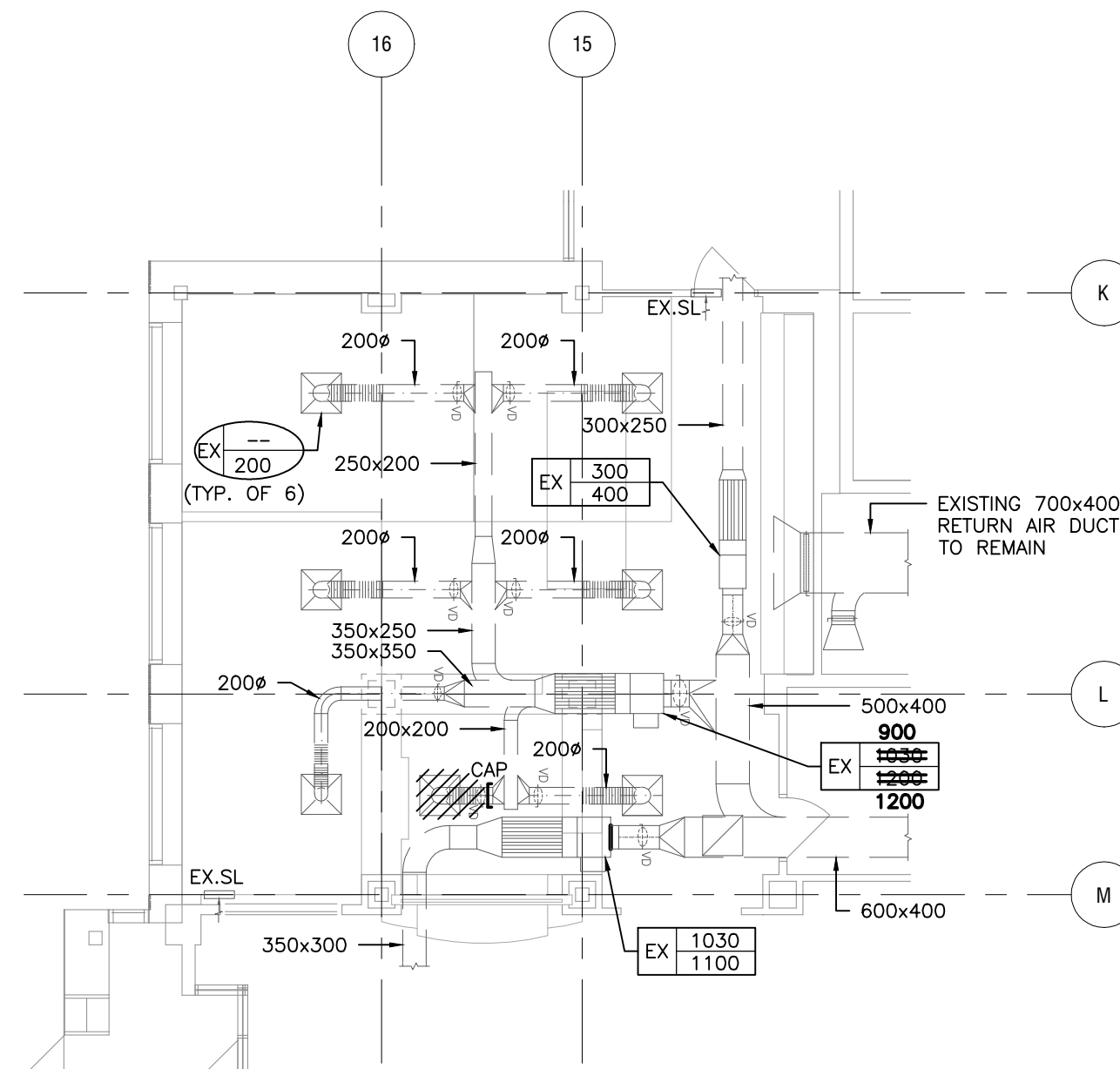


ISSUED:

No.	Date	Description
1	2016-12-16	ISSUED FOR TENDER



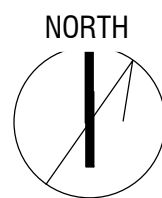
3 RECEPTION AREA – ABOVE GROUND PLUMBING AND FIRE PROTECTION
 M300 1:100



2 RECEPTION AREA – AIR DISTRIBUTION
 M300 1:100



Smith + Andersen
 148 Fullarton St. Suite 1400 London Ontario N6A 5P3
 519 963 8888 www.smithandandersen.com



**NRC Factory of the Future
 Demolition Package 2**

800 Collip Cir, London, ON N6G 4X8

RECEPTION AREA DEMOLITION

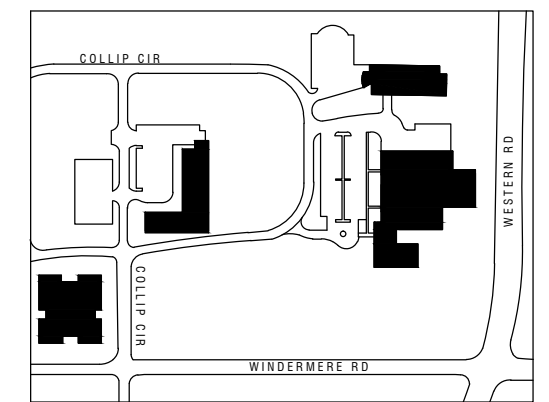
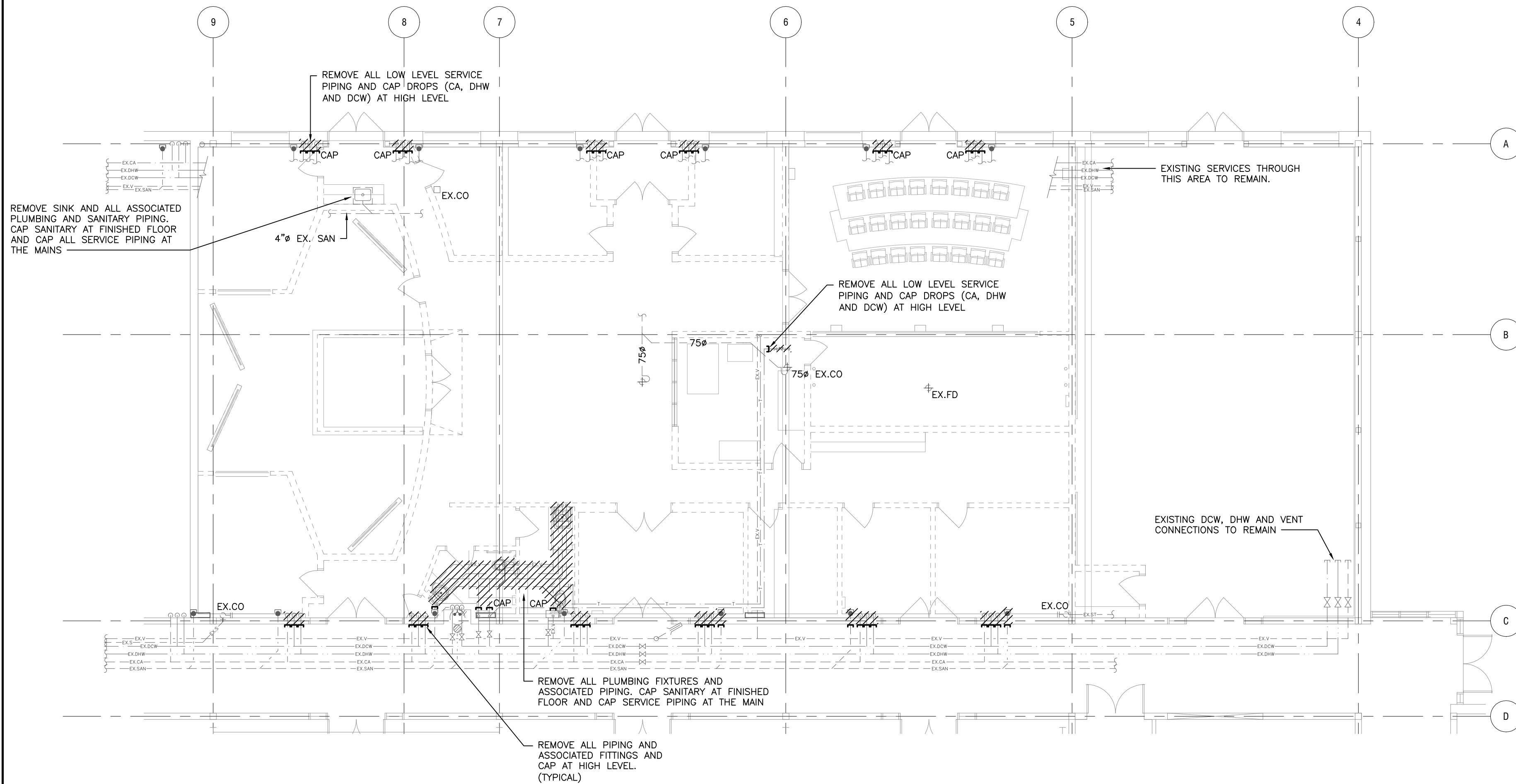
designed	conçu	date	date
R.E.		2016-12-13	
drawn	dessiné	scale:	échelle
P.C.		1:100	
checked	vérifié	sheet	feuille
SM			
approved	approuvé	W.O. no	D.T. no
SM			

dwg. no. dessin no.

0200-M03

DEMOLITION NOTES:

- DO NOT SCALE DRAWINGS. THE LOCATIONS OF ALL ITEMS SHOWN ON THE DRAWINGS OR SPECIFIED THAT ARE NOT DEFINITELY FIXED BY DIMENSIONS ARE APPROXIMATE ONLY. THE EXACT LOCATIONS NECESSARY TO SECURE THE BEST CONDITIONS AND RESULTS MUST BE DETERMINED BY THE SITE CONDITIONS. REVIEW ALL REVISIONS WITH THE CONSULTANT.
- ENSURE ALL LIVE SERVICES ARE ISOLATED PRIOR TO DISCONNECTING EQUIPMENT.
- CO-ORDINATE DEMOLITION OF ALL MECHANICAL SITE SERVICES, PIPING AND EQUIPMENT WITH ALL OTHER DIVISIONS.
- ALL MATERIAL FROM MECHANICAL SERVICE DEMOLITION, FOR ALL EXISTING PLUMBING, HVAC AND FIRE PROTECTION IS TO BE DISPOSED OF AND REMOVED FROM SITE.
- THE DEMOLITION DRAWINGS SHOW THE GENERAL SCOPE OF THE DEMOLITION OF THE EXISTING UTILITIES AND INCOMING SERVICES AND NOT EXACT DETAILS OR TOTAL EXTENT. THE SCOPE OF MECHANICAL DEMOLITION IS FOR COMPLETE REMOVAL OF ALL PLUMBING, HVAC, AND FIRE PROTECTION SERVICES. THERE ARE NO DRAWINGS AVAILABLE TO OUTLINE THIS SCOPE OF WORK. PRIOR TO SUBMITTING THE DEMOLITION BID PRICE, IT IS THE RESPONSIBILITY OF THE MECHANICAL DEMOLITION CONTRACTOR TO REVIEW THE SITE AND ALLOW FOR REMOVAL OF ALL SERVICE.



ISSUED:

No.	Date	Description
1	2016-12-16	ISSUED FOR TENDER



Smith + Andersen
 148 Fullerton St. Suite 1400 London Ontario N6A 5P3
 519 963 8888 www.smithandandersen.com



**NRC Factory of the Future
 Demolition Package 2**

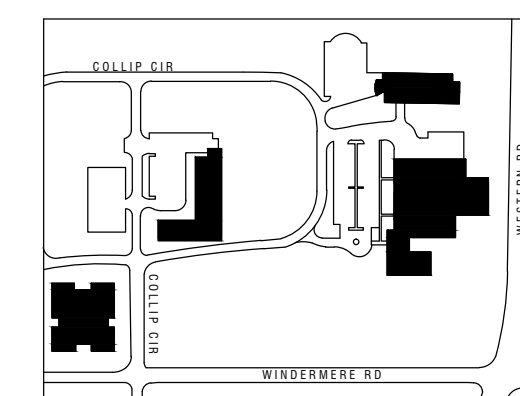
800 Collip Cir, London, ON N6G 4X8

**LEVEL 1 DEMOLITION
 PLUMBING**

designed	conçu	date	date
R.E.		2016-12-13	
drawn	dessiné	scale:	échelle
P.C.		1:100	
checked	vérifié	sheet	feuille
SM			
approved	approuvé	W.O. no	D.T. no
SM			

dwg. no. / dessin no.

0200-M04



ISSUED:

No.	Date	Description
1	2016-12-16	ISSUED FOR TENDER

REMOVE ALL LOW LEVEL HEATERS C/W ASSOCIATED PIPING DROPS AND THERMOSTATS

EXISTING FORCED FLOW HEATER AND ASSOCIATED CONNECTIONS TO BE REMOVED

EXISTING AIR HANDLING UNIT NO.3 ON ROOF

EXISTING LEIBERT COOLING UNIT FOR IT ROOM AND ALL ASSOCIATED CONNECTIONS AND SERVICES TO BE REMOVED

ALL EXTERIOR WALL MOUNTED VAV THERMOSTATS TO REMAIN (TYPICAL)

REMOVE THERMOSTATS FROM ALL INTERIOR WALL LOCATIONS AND MOUNT AT HIGH LEVEL. TEMPORARILY HANG FROM ROOF STRUCTURE FOR FUTURE INSTALLATION ON NEW PARTITIONS (TYPICAL)

MAIN BAS CONTROLLER TO BE RE-LOCATED BY BAS VENDOR AND TEMPORARILY SUPPORTED.

BAS VENDOR TO CONFIRM ALL BAS CONTROLLER TERMINALS AND COORDINATE ANY SHUTDOWNS WITH OWNER PRIOR TO COMPLETING ANY WORK.

REMOVE WALL TRANSFER GRILLE (TYPICAL)

REMOVE ALL RETURN AND EXHAUST GRILLES (TYPICAL)

REMOVE ALL SQUARE CEILING DIFFUSERS AND ASSOCIATED RIGID CONNECTIONS FOR ALL T-BAR CEILING SPACE. CAP AT MAIN DUCT DOWNSTREAM OF VAV BOX (TYPICAL)

REMOVE EXISTING BOOTH AND ASSOCIATED CONNECTIONS. DISASSEMBLE IN PIECES

REMOVE EXISTING 1050Ø SPRAY BOOTH AND ASSOCIATED VENT ABOVE ROOF

EXISTING COMPRESSED AIR OUTLET TO REMAIN

REMOVE PUMP AND ASSOCIATED PIPING CONNECTIONS

REMOVE EXISTING 1600x400 SPRAY MAKE-UP AIR DUCT AND ASSOCIATED MAKE-UP AIR UNIT No.1

REMOVE EXISTING HYDROGEN AND NITROGEN CONNECTIONS AND CAP AT HIGH LEVEL

EXISTING GAS CONNECTION TO BE REMOVED

REMOVE EXISTING FURNACE AND ASSOCIATED 300Ø EXHAUST DUCT AND GAS CONNECTION. CAP DUCTWORK AT ROOF LEVEL. FURNACE TO BE DISASSEMBLED AND MOVED IN PIECES.

GENERAL NOTES:

- DO NOT SCALE DRAWINGS. THE LOCATIONS OF ALL ITEMS SHOWN ON THE DRAWINGS OR SPECIFIED THAT ARE NOT DEFINITELY FIXED BY DIMENSIONS ARE APPROXIMATE ONLY. THE EXACT LOCATIONS NECESSARY TO SECURE THE BEST CONDITIONS AND RESULTS MUST BE DETERMINED BY THE SITE CONDITIONS. REVIEW ALL REVISIONS WITH THE CONSULTANT.
- FLOOR PLANS SHALL BE READ IN CONJUNCTION WITH SCHEMATICS. INFORMATION SHOWN ON FLOOR PLANS SHALL BE ASSUMED TO BE APPLICABLE TO THE RELATED SYSTEM SCHEMATIC AND VICE-VERSA TO PROVIDE A COMPLETE AND OPERATIONAL SYSTEM.

DEMOLITION NOTES:

- DO NOT SCALE DRAWINGS. THE LOCATIONS OF ALL ITEMS SHOWN ON THE DRAWINGS OR SPECIFIED THAT ARE NOT DEFINITELY FIXED BY DIMENSIONS ARE APPROXIMATE ONLY.
- THE EXACT LOCATIONS NECESSARY TO SECURE THE BEST CONDITIONS AND RESULTS MUST BE DETERMINED BY THE SITE CONDITIONS. REVIEW ALL REVISIONS WITH THE CONSULTANT.
- ENSURE ALL LIVE SERVICES ARE ISOLATED PRIOR TO DISCONNECTING EQUIPMENT. CO-ORDINATE DEMOLITION OF ALL MECHANICAL SITE SERVICES, PIPING AND EQUIPMENT WITH ALL OTHER DIVISIONS.
- ALL MATERIAL FROM MECHANICAL SERVICE DEMOLITION, FOR ALL EXISTING PLUMBING, HVAC AND FIRE PROTECTION IS TO BE DISPOSED OF AND REMOVED FROM SITE.

- THE DEMOLITION DRAWINGS SHOW THE GENERAL SCOPE OF THE DEMOLITION OF THE EXISTING UTILITIES AND INCOMING SERVICES AND NOT EXACT DETAILS OR TOTAL EXTENT. THE SCOPE OF MECHANICAL DEMOLITION IS FOR COMPLETE REMOVAL OF ALL PLUMBING, HVAC, AND FIRE PROTECTION SERVICES. THERE ARE NO DRAWINGS AVAILABLE TO OUTLINE THIS SCOPE OF WORK. PRIOR TO SUBMITTING THE DEMOLITION BID PRICE, IT IS THE RESPONSIBILITY OF THE MECHANICAL DEMOLITION CONTRACTOR TO REVIEW THE SITE AND ALLOW FOR REMOVAL OF ALL SERVICE.
- MECHANICAL CONTRACTOR SHALL VISIT SITE OF TENDER FOR A WALKTHROUGH. THE PURPOSE OF THE WALKTHROUGH SHALL BE TO DETERMINE FULL EXTENT OF THE REMOVAL OF EXISTING MECHANICAL EQUIPMENT, ASSOCIATED PIPING, DUCTING, SYSTEM ACCESSORIES, CONTROLS, ETC.



Smith + Andersen

148 Fullarton St. Suite 1400 London Ontario N6A 5P3
519 963 8888 www.smithandandersen.com



**NRC Factory of the Future
Demolition Package 2**

800 Collip Cir, London, ON N6G 4X8

drawing **LEVEL 1 DEMOLITION HVAC** dessin

designed	conçu	date	date
R.E.		2016-12-13	
drawn	dessiné	scale:	échelle
P.C.		1:100	
checked	vérifié	sheet	feuille
SM			
approved	approuvé	W.O. no	D.T. no
SM			

dwg.no. dessin.no.

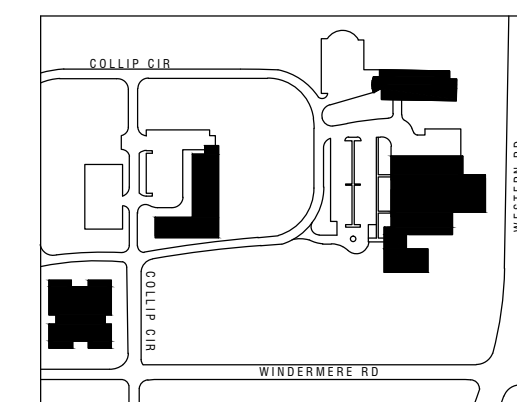
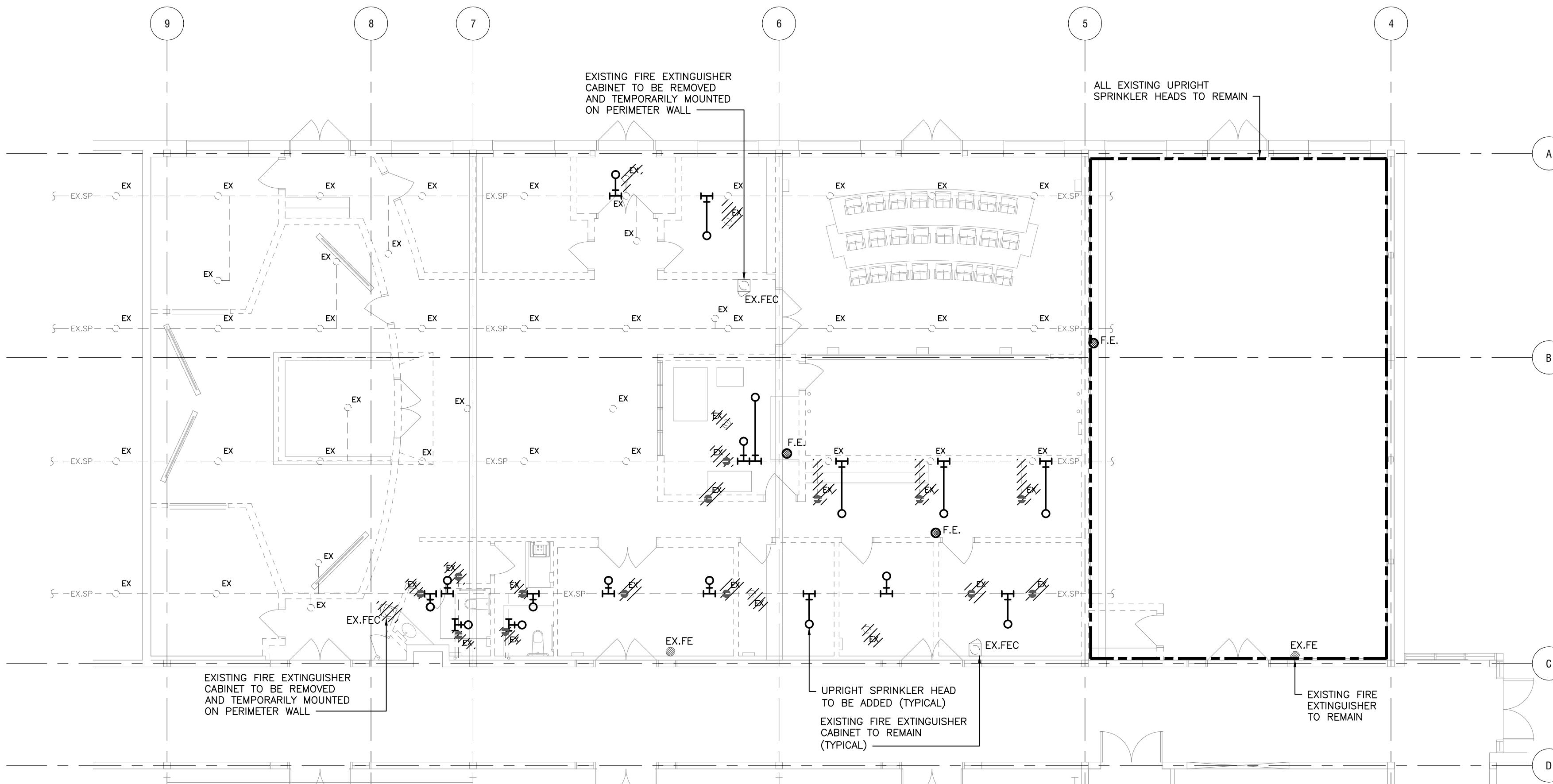
0200-M05

GENERAL NOTES:

- DO NOT SCALE DRAWINGS. THE LOCATIONS OF ALL ITEMS SHOWN ON THE DRAWINGS OR SPECIFIED THAT ARE NOT DEFINITELY FIXED BY DIMENSIONS ARE APPROXIMATE ONLY. THE EXACT LOCATIONS NECESSARY TO SECURE THE BEST CONDITIONS AND RESULTS MUST BE DETERMINED BY THE SITE CONDITIONS. REVIEW ALL REVISIONS WITH THE CONSULTANT.
- FLOOR PLANS SHALL BE READ IN CONJUNCTION WITH SCHEMATICS. INFORMATION SHOWN ON FLOOR PLANS SHALL BE ASSUMED TO BE APPLICABLE TO THE RELATED SYSTEM SCHEMATIC AND VICE-VERSA TO PROVIDE A COMPLETE AND OPERATIONAL SYSTEM.

DEMOLITION NOTES:

1. ENSURE ALL LIVE SERVICES ARE ISOLATED PRIOR TO DISCONNECTING EQUIPMENT.
2. CO-ORDINATE DEMOLITION OF ALL MECHANICAL SITE SERVICES, PIPING AN EQUIPMENT WITH ALL OTHER DIVISIONS.
3. ALL MATERIAL FROM MECHANICAL SERVICE DEMOLITION, FOR ALL EXISTING PLUMBING, HVAC AND FIRE PROTECTION IS TO BE DISPOSED OF AND REMOVED FROM SITE.
4. THE DEMOLITION DRAWINGS SHOW THE GENERAL SCOPE OF THE DEMOLITION OF THE EXISTING UTILITIES AND INCOMING SERVICES AND NOT EXACT DETAILS OR TOTAL EXTENT. THE SCOPE OF MECHANICAL DEMOLITION IS FOR COMPLETE REMOVAL OF ALL PLUMBING, HVAC, AND FIRE PROTECTION SERVICES. THERE ARE NO DRAWINGS AVAILABLE TO OUTLINE THIS SCOPE OF WORK. PRIOR TO SUBMITTING THE DEMOLITION BID PRICE, IT IS THE RESPONSIBILITY OF THE MECHANICAL DEMOLITION CONTRACTOR TO REVIEW THE SITE AND ALLOW FOR REMOVAL OF ALL SERVICE.
5. ALL EXISTING PENDANT AND CONCEALED SPRINKLER HEADS TO BE REMOVED AND REPLACED BY UPRIGHT SPRINKLER HEADS

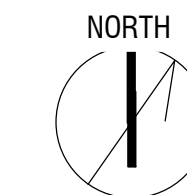


ISSUED:

No.	Date	Description
1	2016-12-16	ISSUED FOR TENDER



Smith + Andersen
 148 Fullarton St. Suite 1400 London Ontario N6A 5P3
 519 963 8888 www.smithandandersen.com



**NRC Factory of the Future
 Demolition Package 2**

800 Collip Cir, London, ON N6G 4X8

drawing **LEVEL 1 DEMOLITION FIRE PROTECTION** dessin

designed	conçu	date	date
R.E.		2016-12-13	
drawn	dessiné	scale:	échelle
P.C.		1:100	
checked	vérifié	sheet	feuille
SM			
approved	approuvé	W.O. no	D.T. no
SM			

dwg.no. dessin no.

0200-M06

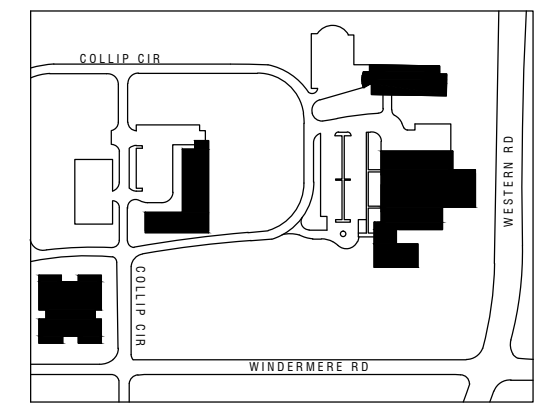


GENERAL NOTES:

- DO NOT SCALE DRAWINGS. THE LOCATIONS OF ALL ITEMS SHOWN ON THE DRAWINGS OR SPECIFIED THAT ARE NOT DEFINITELY FIXED BY DIMENSIONS ARE APPROXIMATE ONLY. THE EXACT LOCATIONS NECESSARY TO SECURE THE BEST CONDITIONS AND RESULTS MUST BE DETERMINED BY THE SITE CONDITIONS. REVIEW ALL REVISIONS WITH THE CONSULTANT.
- FLOOR PLANS SHALL BE READ IN CONJUNCTION WITH SCHEMATICS. INFORMATION SHOWN ON FLOOR PLANS SHALL BE ASSUMED TO BE APPLICABLE TO THE RELATED SYSTEM SCHEMATIC AND VICE-VERSA TO PROVIDE A COMPLETE AND OPERATIONAL SYSTEM.

DEMOLITION NOTES:

1. DO NOT SCALE DRAWINGS. THE LOCATIONS OF ALL ITEMS SHOWN ON THE DRAWINGS OR SPECIFIED THAT ARE NOT DEFINITELY FIXED BY DIMENSIONS ARE APPROXIMATE ONLY.
2. THE EXACT LOCATIONS NECESSARY TO SECURE THE BEST CONDITIONS AND RESULTS MUST BE DETERMINED BY THE SITE CONDITIONS. REVIEW ALL REVISIONS WITH THE CONSULTANT.
3. ENSURE ALL LIVE SERVICES ARE ISOLATED PRIOR TO DISCONNECTING EQUIPMENT. CO-ORDINATE DEMOLITION OF ALL MECHANICAL SITE SERVICES, PIPING AN EQUIPMENT WITH ALL OTHER DIVISIONS.
4. ALL MATERIAL FROM MECHANICAL SERVICE DEMOLITION, FOR ALL EXISTING PLUMBING, HVAC AND FIRE PROTECTION IS TO BE DISPOSED OF AND REMOVED FROM SITE.
5. THE DEMOLITION DRAWINGS SHOW THE GENERAL SCOPE OF THE DEMOLITION OF THE EXISTING UTILITIES AND INCOMING SERVICES AND NOT EXACT DETAILS OR TOTAL EXTENT. THE SCOPE OF MECHANICAL DEMOLITION IS FOR COMPLETE REMOVAL OF ALL PLUMBING, HVAC, AND FIRE PROTECTION SERVICES. THERE ARE NO DRAWINGS AVAILABLE TO OUTLINE THIS SCOPE OF WORK. PRIOR TO SUBMITTING THE DEMOLITION BID PRICE. IT IS THE RESPONSIBILITY OF THE MECHANICAL DEMOLITION CONTRACTOR TO REVIEW THE SITE AND ALLOW FOR REMOVAL OF ALL SERVICE.



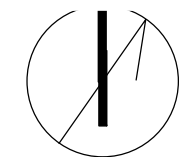
ISSUED:

No.	Date	Description
1	2016-12-16	ISSUED FOR TENDER



Smith + Andersen
 148 Fullerton St. Suite 1400 London Ontario N6A 5P3
 519 963 8888 www.smithandandersen.com

NORTH



**NRC Factory of the Future
 Demolition Package 2**

800 Collip Cir, London, ON N6G 4X8

drawing **ROOF DEMOLITION HVAC** dessin

designed	conçu	date	date
R.E.		2016-12-13	
drawn	dessiné	scale:	échelle
P.C.		1:100	
checked	vérifié	sheet	feuille
SM			
approved	approuvé	W.O. no	D.T. no
SM			

dwg. no. dessin no.

0200-M07