



**RETURN BIDS TO:**

**RETOURNER LES SOUMISSIONS À:**

Réception des soumissions - TPSGC / Bid Receiving  
- PWGSC  
1550, Avenue d'Estimauville  
1550, D'Estimauville Avenue  
Québec  
Québec  
G1J 0C7

**SOLICITATION AMENDMENT  
MODIFICATION DE L'INVITATION**

The referenced document is hereby revised; unless otherwise indicated, all other terms and conditions of the Solicitation remain the same.

Ce document est par la présente révisé; sauf indication contraire, les modalités de l'invitation demeurent les mêmes.

**Comments - Commentaires**

**Vendor/Firm Name and Address**  
Raison sociale et adresse du  
fournisseur/de l'entrepreneur

**Issuing Office - Bureau de distribution**  
TPSGC/PWGSC  
601-1550, Avenue d'Estimauville  
Québec  
Québec  
G1J 0C7

<b>Title - Sujet</b> Remplacement Thermopompes		
<b>Solicitation No. - N° de l'invitation</b> EE519-170536/A		<b>Amendment No. - N° modif.</b> 003
<b>Client Reference No. - N° de référence du client</b> EE519-170536		<b>Date</b> 2017-01-20
<b>GETS Reference No. - N° de référence de SEAG</b> PW-\$QCL-018-17016		
<b>File No. - N° de dossier</b> QCL-6-39329 (018)	<b>CCC No./N° CCC - FMS No./N° VME</b>	
<b>Solicitation Closes - L'invitation prend fin</b> <b>at - à 02:00 PM</b> <b>on - le 2017-02-01</b>		<b>Time Zone</b> Fuseau horaire Heure Normale du l'Est HNE
<b>F.O.B. - F.A.B.</b> <b>Plant-Usine:</b> <input type="checkbox"/> <b>Destination:</b> <input checked="" type="checkbox"/> <b>Other-Autre:</b> <input type="checkbox"/>		
<b>Address Enquiries to: - Adresser toutes questions à:</b> Piras, Gabriel		<b>Buyer Id - Id de l'acheteur</b> qcl018
<b>Telephone No. - N° de téléphone</b> (418) 649-2870 ( )		<b>FAX No. - N° de FAX</b> (418) 648-2209
<b>Destination - of Goods, Services, and Construction:</b> <b>Destination - des biens, services et construction:</b> Institut Maurice-Lamontagne 850, route de la Mer, C. P. 1000 Mont-Joli (Québec) G5H 3Z4		

**Instructions: See Herein**

**Instructions: Voir aux présentes**

<b>Delivery Required - Livraison exigée</b>	<b>Delivery Offered - Livraison proposée</b>
<b>Vendor/Firm Name and Address</b> Raison sociale et adresse du fournisseur/de l'entrepreneur	
<b>Telephone No. - N° de téléphone</b> <b>Facsimile No. - N° de télécopieur</b>	
<b>Name and title of person authorized to sign on behalf of Vendor/Firm</b> <b>(type or print)</b> <b>Nom et titre de la personne autorisée à signer au nom du fournisseur/</b> <b>de l'entrepreneur (taper ou écrire en caractères d'imprimerie)</b>	
<b>Signature</b>	<b>Date</b>

---

**TITRE : INSTITUT MAURICE-LAMONTAGNE, STE-FLAVIE - REMPLACEMENT DES THERMOPOMPES  
MODIFICATION 003**

Inclus dans la présente modification :

- Question et réponse 1

---

**QUESTIONS ET RÉPONSES**

**Question 1**

Nous avons l'intention de faire une demande d'équivalence en conformité avec la section 25 05 01, page 1, article 1.3. Mais d'abord, afin d'évaluer la pertinence de présenter une soumission, nous aimerions avoir la liste des points ainsi que l'architecture du réseau Siemens existant.

***Réponse :***

Voici le décompte des points sur le système de régulation à l'institut Maurice-Lamontagne

Points total : 3958

Points physiques sur les panneaux : 875

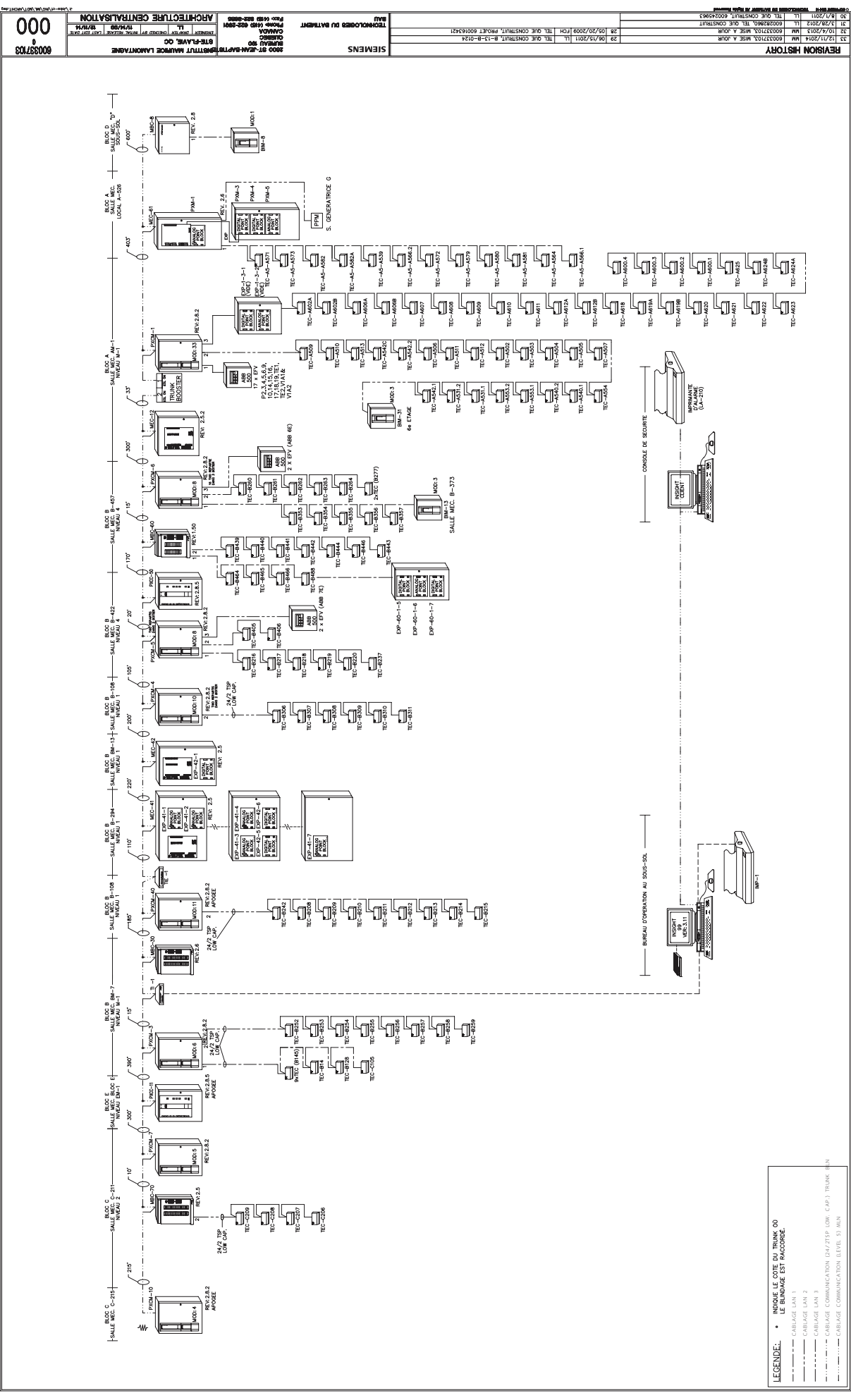
TEC (contrôleurs de pièce) : 183

Variateurs de vitesse : 21

La liste partielle des points et l'architecture du réseau est jointe à cette modification.

---

**\*\*\* Toutes les autres clauses et conditions demeurent inchangées \*\*\***

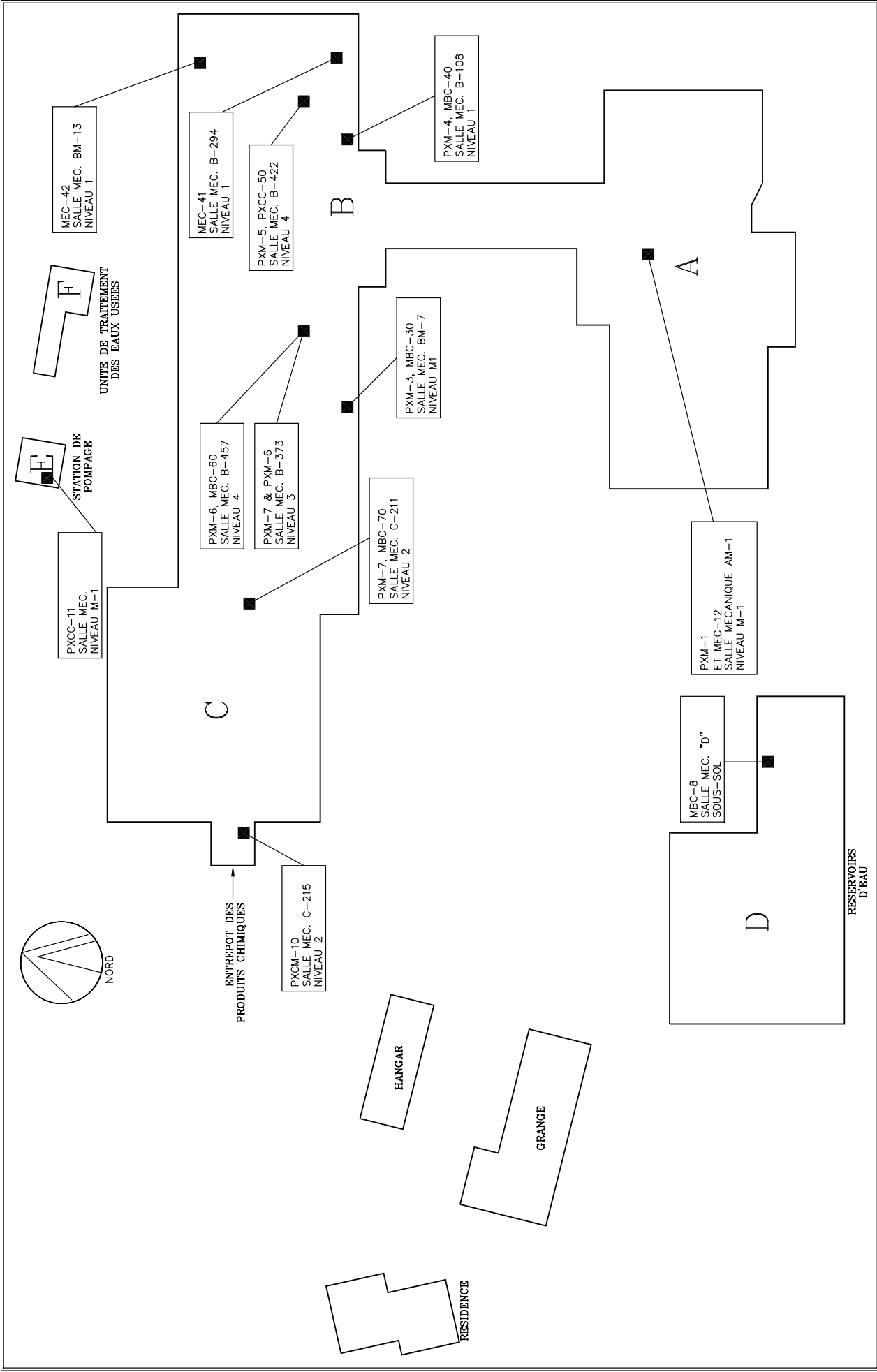


- LEGENDE :
- INDIQUE LE COTE DU TRUNK OU LE BUNDAGE EST RACCORDE.
  - CARLAGE LAN 1
  - CARLAGE LAN 2
  - CARLAGE LAN 3
  - CARLAGE COMMUNICATION (24/7) TP LOW CAP 3 TRUNK BEN
  - CARLAGE COMMUNICATION (LEVEL 5) MEN

REVISION HISTORY					
33	12/11/2014	MR	600337	MR	A. JOU
32	10/4/2013	MR	600337	MR	A. JOU
31	3/28/2012	LT	600282	LT	A. JOU
30	8/1/2011	LT	600282	LT	A. JOU

REV. 01 - 01/04/2014					
		CONSTRUIT, 600245963			
		10, TEL. QUE CONSTRUIT			
		03, MISE A JOUR			
28	05/20/2009	FCM	TEL. QUE CONSTRUIT, PROJET 600163421		
29	06/15/2011	LT	TEL. QUE CONSTRUIT, 8-13-8-0124		

SIEMENS	
2005-01-01	2005-01-01
000	



												425-SER-1637-											
												0000											
SIEMENS												INSTITUT MAURICE LAMONTAGNE											
2800 ST-JEAN-BAPTISTE												STE-FLAVIE, QC											
BUREAU 80																							
QUEBEC																							
CANADA																							
Phone: (418) 822-2981												ENGINEER											
Fax: (418) 822-3885												DRAFTER											
												ET											
												ET											
												11/14/99											
												INITIAL RELEASE											
												01/19/15											
												LAST EDIT DATE											
TECHNOLOGIES DU BATIMENT												DIAGRAMME IMPLANTATION											
BAU																							
</																							

D-INCENDIE.AL	LDI	AL POMPE INC	Status	0.8.0.1.1 Std
D-INCENDIE.AHN	LDI	A H NIV PI	Status	0.8.0.1.2 Std
D-EAUCULTURE.HN	LDI	H NIV E CULT	Status	0.8.0.1.4 No
D-EAUFROIDE.SOUP	LDO	ROB EAU FROI	On/Off	0.8.0.2.1 No
D-INCENDIE.ROBOT	LDO	ROB PROT INC	On/Off	0.8.0.2.2 Std
D-EAUCULTURE.BN	LDI	B NIV E CULT	Status	0.8.0.3.1 No
D-EAUCULTURE.ABN	LDI	B NIV E CULT	Status	0.8.0.3.2 No
D-EAUFROIDE.AHN	LDI	H NIV E FROI	Status	0.8.0.3.3 Std
D-EAUFROIDE.BN	LDI	B NIV E FROI	Status	0.8.0.3.4 No
D-VD1.SYS	L2SL	VENT D1 1A	On/Off	0.8.0.4.1 Std
D-VD1.SYS	L2SL	VENT D1 1A	Proof	0.8.0.5.1 Std
D-INCENDIE.HN	LDI	H NIV PR INC	Status	0.8.0.5.2 No
D-INCENDIE.BN	LDI	B NIV PR INC	Status	0.8.0.5.3 No
D-EAUFROIDE.HN	LDI	H NIV E FROI	Status	0.8.0.5.4 No
D-EAUCULTURE.SOUP	LDO	ROB EAU CULT	On/Off	0.8.0.6.2 No
D-EAUCULTURE.DEB	LAI	DEB E. CULT.	Value	0.8.0.9.2 No
D-EAUSALE.DEB	LAI	DEB H. SAL.	Value	0.8.0.11.1 No
D-VD1.TPI	LAI	TEM PIE VD1	Value	0.8.0.11.2 Std
D-VD1.HPI	LAI	HUM PIE VD1	Value	0.8.0.13.1 Std
D-CHLORE	LAI	NIVEAU DE CHLORE	Value	0.8.0.13.2 Enh
D-VD1.TAL	LAI	TEM ALI VD1	Value	0.8.0.14.1 Std
D-VD1.TME	LAI	TEM MEL VD1	Value	0.8.0.14.2 Std
D-EAUMER.POTPAPE	LAI	POT 0 10VOLT	Value	0.8.0.15.1 No
D-VD1.CVO	LAO	CON VOL VD1	Value	0.8.0.22.1 No
D-VD1.CSE	LAO	SERPENTIN	Value	0.8.0.22.2 No
D-EAUMER.CSB7	LAO	VALV BAS 7	Value	0.8.0.24.1 No
D-EAUMER.CSB8	LAO	VALV BAS 8	Value	0.8.0.24.2 No
D-EAUMER.CSB9	LAO	VALV BAS 9	Value	0.8.0.26.1 No
D-EAUMER.CSB10	LAO	VALV BAS 10	Value	0.8.0.26.2 No
HNEM	LDI	H NIV E MER	Status	0.8.1.9.1 No
BNEM	LDI	B NIV E MER	Status	0.8.1.9.2 No
ABNEM	LDI	B NIV E MER	Status	0.8.1.9.3 Std
AB2NEM	LDI	AL B NIV E M	Status	0.8.1.9.4 Std
BLOC D_PORTE-EXTERIEUR	LDI	PORTE EXTERIEUR	Status	0.8.1.9.5 Enh
NIVSUD.BAS	LAI		Value	0.8.1.9.6 No
NIVNORD.BAS	LAI		Value	0.8.1.9.7 No
D-EAUDOM.DEB	LPACI	CNTR E DOM 1	Counter	0.8.1.9.8 No
A-ECM201.POM1	LDI	PM POM1	Status	0.12.0.0.1 No
A-ECM201.DEB1	LDI	PM POM1	Status	0.12.0.0.2 No
A-ECM201.CCH	LAO	ALIM VAP ECH	Value	0.12.0.0.9 No
B-B135.TPI	LAI	TEMP PIECE 135	Value	0.30.0.1.1 Enh
B-B136.TPI	LAI	TEMP PIECE 136	Value	0.30.0.1.2 Enh
B-BM9.CSE	LAO	SERP.ELEC	Value	0.30.0.2.1 No
B-B141.TPI	LAI	TEMP PIECE 141	Value	0.30.0.3.1 Enh
B-B140.TPI	LAI	TP 140	Value	0.30.0.3.2 Enh
B-B146.TPI	LAI	TEMP PIECE 146	Value	0.30.0.5.1 Enh
B-B142.TPI	LAI	TEMP PIECE 142	Value	0.30.0.5.2 Enh
B-B143.TPI	LAI	TEMP PIECE 143	Value	0.30.0.7.1 Enh
B-B149.TPI	LAI	TEMP PIECE 149	Value	0.30.0.7.2 Enh
B-B144.TPI	LAI	TEMP PIECE 144	Value	0.30.0.9.1 Enh
B-001.TPI	LAI	TEMP PIECE 004	Value	0.30.0.9.2 Enh
B-002.TPI	LAI	TEMP PIECE 002	Value	0.30.0.11.1 Enh
B-003.TPI	LAI	TEMP PIECE 003	Value	0.30.0.11.2 Enh
B-004.TPI	LAI	TEMP PIECE 004	Value	0.30.0.13.1 Enh

B-B137.TPI	LAI	TEMP PIECE 137	Value	0.30.0.13.2	Enh
B-BM9.TPI	LAI	T PIECE BM9	Value	0.30.0.15.1	No
B-BM9.TPI_PC	LAI	T PIECE BM9	Value	0.30.0.15.2	No
B-003.TRANSFERT	LDO	ON REF OFF CHAUF	On/Off	0.30.0.22.1	No
B-004.TRANSFERT	LDO	ON REF OFF CHAUF	On/Off	0.30.0.22.2	No
B-B135.REF	LDO	A/D REFR.PIE 135	On/Off	0.30.0.24.1	No
B-B136.REF	LDO	A/D REFR.PIE 136	On/Off	0.30.0.24.2	No
B-B141.REF	LDO	A/D REFR.PIE 141	On/Off	0.30.0.26.1	No
B-B140.REF	LDO	A/D REFR.PIE 140	On/Off	0.30.0.26.2	No
B-B146.REF	LDO	A/D REFR.PIE 146	On/Off	0.30.0.28.1	No
B-B142.REF	LDO	A/D REFR.PIE 142	On/Off	0.30.0.28.2	No
B-B143.REF	LDO	A/D REFR.PIE 143	On/Off	0.30.0.30.1	No
B-B149.REF	LDO	A/D REFR.PIE 149	On/Off	0.30.0.30.2	No
B-B144.REF	LDO	A/D REFR.PIE 144	On/Off	0.30.0.32.1	No
B-001.REF	LDO	A/D REFR.PIE 001	On/Off	0.30.0.32.2	No
B-B142.DEGIV	LDI	DEGIVRAGE	Status	0.30.0.33.1	No
B-B137.DEGIV	LDI	DEGIVRAGE	Status	0.30.0.33.2	No
B-B143.DEGIV	LDI	DEGIVRAGE	Status	0.30.0.33.3	No
B-002.REF	LDO	A/D REFR.PIE 002	On/Off	0.30.0.34.1	No
B-003.COMP	LDO	A/D COMP.PIE 003	On/Off	0.30.0.34.2	No
B-B136.DEGIV	LDI	DEGIVRAGE	Status	0.30.0.35.2	No
B-B141.DEGIV	LDI	DEGIVRAGE	Status	0.30.0.35.3	No
B-B140.DEGIV	LDI	DEGIVRAGE	Status	0.30.0.35.4	No
B-004.REF	LDO	A/D REFR.PIE 004	On/Off	0.30.0.36.1	No
B-B137.REF	LDO	A/D REFR.PIE 137	On/Off	0.30.0.36.2	No
B-B2A1.SYA	L2SL	ALIM BASSINS	Proof	0.41.0.0.1	Std
B-B2A1.SYE	L2SL	EVAC BASSINS	Proof	0.41.0.0.2	Std
B-B2A2.SYA	L2SL	ALIM MAMMIFERES	Proof	0.41.0.0.3	Std
B-B2A2.SYE	L2SL	EVAC MAMMIFERES	Proof	0.41.0.0.4	Std
B-B2A2.IVA	LDI	IND OUV VOL ALIM	Status	0.41.0.0.5	No
B-B2A2.IVE	LDI	IND OUV VOL EVAC	Status	0.41.0.0.6	No
B-B2A3.SYA	L2SL	ALIM SALLE MEC	Proof	0.41.0.0.7	Std
B-B2A4.SYA	L2SL	ALI ENTRE GARAGE	Proof	0.41.0.0.8	Std
B-B2A1.CVO	LAO	VOLETS MELANGE	Value	0.41.0.0.9	No
B-B2A1.CRE	LAO	SOUP REFROID	Value	0.41.0.0.10	No
B-B2A1.CCH	LAO	SERP ELECT	Value	0.41.0.0.11	No
B-B2A1.CHU	LAO	HUMIDIFICATEUR	Value	0.41.0.0.12	No
B-B2A2.CRE	LAO	SOUP REFROID	Value	0.41.0.0.13	No
B-B2A2.CCH	LAO	SERP ELECT	Value	0.41.0.0.14	No
B-B2A2.CHU	LAO	HUMIDIFICATEUR	Value	0.41.0.0.15	No
B-REF294.CRE	LAO	CTRL REFROID	Value	0.41.0.0.16	No
B-B2A1.TPI1	LAI	TEMP PIECE NO	Value	0.41.0.0.17	No
B-B2A1.HPI1	LAI	HUM PIECE NO	Value	0.41.0.0.18	No
B-B2A1.TPI2	LAI	TEMP PIECE SUD	Value	0.41.0.0.19	No
B-B2A1.HPI2	LAI	HUM PIECE SUD	Value	0.41.0.0.20	No
B-B2A1.AFM	LAI	FILTRE MELANGE	Value	0.41.0.0.21	Std
B-B2A1.TME	LAI	TEMP MELANGE	Value	0.41.0.0.22	No
B-B2A1.TAL	LAI	TEMP ALIM	Value	0.41.0.0.24	No
B-B2A1.SYA	L2SL	ALIM BASSINS	On/Off	0.41.0.0.25	Std
B-B2A1.SYE	L2SL	EVAC BASSINS	On/Off	0.41.0.0.26	Std
B-B2A2.SYA	L2SL	ALIM MAMMIFERES	On/Off	0.41.0.0.27	Std
B-B2A2.SYE	L2SL	EVAC MAMMIFERES	On/Off	0.41.0.0.28	Std
B-B2A3.SYA	L2SL	ALIM SALLE MEC	On/Off	0.41.0.0.29	Std
B-B2A3.AEE	LDO	AEROTHERME	On/Off	0.41.0.0.30	No

B-B2A4.SYA	L2SL	ALI ENTRE GARAGE	On/Off	0.41.0.0.31	Std
B-B2A1.TRE	LAI	TEMP RETOUR	Value	0.41.0.1.1	No
B-B2A1.TEF	LAI	TEMP EAU FROIDE	Value	0.41.0.1.2	No
B-B2A2.AFA1	LAI	FILTRE ALIM 1	Value	0.41.0.1.3	Std
B-B2A2.AFA2	LAI	FILTRE ALIM 2	Value	0.41.0.1.4	Std
B-B2A2.TSF	LAI	TEMP SERP FROID	Value	0.41.0.2.1	No
B-B2A2.TEF	LAI	TEMP EAU FROIDE	Value	0.41.0.2.2	No
B-B2A2.TAL	LAI	TEMP ALIM	Value	0.41.0.2.3	No
B-B2A2.TRE	LAI	TEMP RETOUR	Value	0.41.0.2.4	No
B-B2A2.TPI	LAI	TEMP PIECE	Value	0.41.0.3.1	Std
B-B2A2.HPI	LAI	HUMIDITE PIECE	Value	0.41.0.3.2	No
B-B2A2.AFE1	LAI	FILTRE EVAC 1	Value	0.41.0.3.3	Std
B-B2A3.TPI	LAI	TEMP PIECE B-294	Value	0.41.0.3.4	Std
B-REF294.TRE	LAI	TEMP RETOUR EF	Value	0.41.0.4.1	No
B-REF294.TAL	LAI	TEMP ALIM EF	Value	0.41.0.4.2	No
B-REF294.TEVAP	LAI	TEMP EVAPOR EF	Value	0.41.0.4.3	No
B-B2A2.AFE2	LAI	FILTRE EVAC 2	Value	0.41.0.4.4	Std
B-REF294.POM1	L2SL	POMPE EAU REF	Proof	0.41.0.5.1	Std
B-REF294.POM2	L2SL	POMPE EAU REF	Proof	0.41.0.5.2	Std
B-REF294.ABN	LDI	BAS NIV RES GLY	Status	0.41.0.5.3	No
B-REF294.ARE	LDI	FAUTE REFROID	Status	0.41.0.5.4	Std
B-B101.DOU	LDI	DOUCHE D'URGENCE	Status	0.41.0.5.5	Enh
PB294	LDI	PORTE B294	Status	0.41.0.5.6	Enh
B-B102.AHN	LDI	HAUT NIVEAU CR.	Status	0.41.0.5.8	No
B-REF294.POM1	L2SL	POMPE EAU REF	On/Off	0.41.0.5.9	Std
B-REF294.POM2	L2SL	POMPE EAU REF	On/Off	0.41.0.5.10	Std
B-REF294.REF	LDO	AUTORIS REFROID	On/Off	0.41.0.5.11	No
B-B102.REMP.B.PHOQUE	LDO	REMP LISAGE	On/Off	0.41.0.5.12	No
B-BB101.AERONORD	LDO	AD AEROTHERME N	On/Off	0.41.0.6.5	No
B-BB101.AEROSUD	LDO	AD AEROTHERME S	On/Off	0.41.0.6.6	No
B-B2A1.TSF	LAI	TEMP SERP FROID	Value	0.41.0.7.1	No
PB101C	LDI	PORTE B1 GARAGE	Status	0.42.0.0.1	Enh
B-MER.POM1	L2SL	POMPE EAU BRUTE	Proof	0.42.0.0.2	Std
B-MER.POM2	L2SL	POMPE EAU BRUTE	Proof	0.42.0.0.3	Std
B-PSUB.AHN	LDI	HAUT NIVEAU	Status	0.42.0.0.4	Std
B-PSUB.PMP1	LDI	POMPE SUBMERSIBL	Status	0.42.0.0.5	No
B-PSUB.PMP2	LDI	POMPE SUBMERSIBL	Status	0.42.0.0.6	No
B-B101.AHN1	LDI	HAUT NIVEAU NORD	Status	0.42.0.0.7	No
PB101A	LDI	PORTE B1 NORD	Status	0.42.0.0.8	Enh
B-B2A4.CCH	LAO	SERP ELECT	Value	0.42.0.0.9	No
B-MER.CPE1	LAO	SOUP EAU MER 1	Value	0.42.0.0.10	No
B-MER.CPE2	LAO	SOUP EAU MER 2	Value	0.42.0.0.11	No
B-B2A4.TRE	LAI	TEMP RETOUR	Value	0.42.0.0.17	No
B-B2A4.TAL	LAI	TEMP ALIM	Value	0.42.0.0.18	No
B-MER.PEM2	LAI	PRES EAU MER 2	Value	0.42.0.0.20	No
B-MER.PEM1	LAI	PRES EAU MER 1	Value	0.42.0.0.21	No
B-BM13.TPI	LAI	TMP S PMP SS	Value	0.42.0.0.23	Std
B-MER.POM1	L2SL	POMPE EAU BRUTE	On/Off	0.42.0.0.25	Std
B-MER.POM2	L2SL	POMPE EAU BRUTE	On/Off	0.42.0.0.26	Std
B-BM13.AEE	LDO	AEROTHERME	On/Off	0.42.0.0.27	No
IML.B-ROTORK.CSF	L2SL	COMM FERME.VAL	On/Off	0.42.0.0.28	Enh
IML.B-ROTORK.CSO	L2SL	COMM OUVERT VAL	On/Off	0.42.0.0.29	Enh
B-B102.UV1.B.PHOQUE	LDI	ULTRA VIOLET	Status	0.42.0.1.1	No
B-B102.UV2.B.PHOQUE	LDI	ULTRA VIOLET	Status	0.42.0.1.2	No

B-B102.FILTRE.COLMATE.B.PHOQUE	LDI	ULTRA VIOLET	Status	0.42.0.1.3	No
IML.B-ROTORK.AL	LDI	ALM SIMODE LOCAL	Status	0.42.0.1.4	No
IML.B-ROTORK.CSO	L2SL	COMM OUVERT VAL	Proof	0.42.0.1.5	Enh
IML.B-ROTORK.CSF	L2SL	COMM FERME.VAL	Proof	0.42.0.1.6	Enh
PB101B	LDI	PORTE B1 EST	Status	0.42.0.1.7	Enh
B116	LAI	HOTTE B 116	Value	06000004	Enh
B1511	LAI	HOTTE B 151	Value	06000005	Enh
TPB561	LAI	TEMP PIECE	Value	06000008	Enh
TPB463	LAI	TEMP PIECE	Value	06000009	Enh
B1512	LAI	HOTTE B 151	Value	06000012	Enh
B152	LAI	HOTTE B 152	Value	06000013	Enh
B455	LAI	HOTTE B 455	Value	06000016	Enh
B467A	LAI	HOTTE B467 2	Value	06000017	Enh
B267	LAI	HOTTE B 267	Value	06000020	Enh
B268	LAI	HOTTE B 268	Value	06000021	Enh
B4601	LAI	HOTTE B 4601	Value	06000024	Enh
B4602	LAI	HOTTE B 4602	Value	06000025	Enh
B269	LAI	HOTTE B 269	Value	06000028	Enh
B367	LAI	HOTTE B 367	Value	06000029	Enh
B454A	LAI	HOTTE B 454A	Value	06000032	Enh
B370	LAI	HOTTE B 370	Value	06000036	Enh
B374	LAI	HOTTE B 374	Value	06000037	Enh
DDB464	LDI	LY B464	Status	06000040	Enh
DD464	LDI	DOUCHE B464	Status	06000041	Enh
AHB464	LDI	AL HOT B464	Status	06000042	Enh
DDB466	LDI	LY B466	Status	06000043	Enh
B3752	LAI	HOTTE B 375	Value	06000044	Enh
B3753	LAI	HOTTE B 375	Value	06000045	Enh
DD488	LDI	LY B-488	Status	06000048	Enh
B376	LAI	HOTTE B 376	Value	06000052	Enh
B377	LAI	HOTTE B 377	Value	06000053	Enh
B453	LAI	HOTTE B 453	Value	06000060	Enh
B454	LAI	HOTTE B 454	Value	06000061	Enh
B368	LAI	HOTTE B 368	Value	06000068	Enh
B459	LAI	HOTTE B 459	Value	06000069	Enh
B462	LAI	HOTTE B 462	Value	06000076	Enh
B467	LAI	HOTTE B 467	Value	06000077	Enh
B4RARM	LDO	REINIT TEC B	On/Off	06000081	No
A5-10A.SYS.LENT	L2SL	ARRET DEPART SYS	Proof	0.61.0.0.1	Std
A5-11A.SYS	L2SL	A/D SYST A5-11A	Proof	0.61.0.0.2	Std
A5-12A.GAZ_BAS	LDI	BASSE ALARME	Status	0.61.0.0.3	Std
A5-12A.GAZ_HAUT	LDI	HAUTE ALARME	Status	0.61.0.0.4	Enh
A5-12A.SYS	L2SL	ARRET/DEPART	Proof	0.61.0.0.5	Std
A5-UC565.AL	LDI	ALARME	Status	0.61.0.0.6	Std
A571	LDI	DOUCHE A571	Status	0.61.0.0.8	Enh
A5-12A.CCH	LAO	SERP. ELECT.	Value	0.61.0.0.11	No
A5-HUM4.CHU	LAO	HUM.2 AM2	Value	0.61.0.0.12	No
A5-10A-A574.CCH	LAO	CONTROL SER ELEC	Value	0.61.0.0.13	No
A5-10A-A575.CCH	LAO	CONTROL SER ELEC	Value	0.61.0.0.14	No
A5-10A.TAL	LAI	TEMP. ALIMENT.	Value	0.61.0.0.17	Std
A5-10A.TEV	LAI	TEMP. EVACUATION	Value	0.61.0.0.18	No
A5-10A-A574.TPI	LAI	T PIECE A574	Value	0.61.0.0.19	Std
A5-10A-A575.TPI	LAI	T PIECE A575	Value	0.61.0.0.20	Std
A5-11A.TAL	LAI	TEMP. ALIMENT.	Value	0.61.0.0.21	Std



A5-11A.TEV	LAI	TEMP. EVAC.	Value	0.61.0.0.22	No
A5-12A.TAL	LAI	TEMP. ALIMENT.	Value	0.61.0.0.23	Std
A5-12A.TEV	LAI	TEMP. EVACUATION	Value	0.61.0.0.24	No
A5-10A.SYS.LENT	L2SL	ARRET DEPART SYS	On/Off	0.61.0.0.25	Std
A5-10A.SYS.RAP	LDO	HAUTE VITESSE	On/Off	0.61.0.0.26	No
A5-11A.SYS	L2SL	A/D SYST A5-11A	On/Off	0.61.0.0.27	Std
A5-12A.SYS	L2SL	ARRET/DEPART	On/Off	0.61.0.0.29	Std
A5-A523.REARM	LDO	CHAUFFAGE	On/Off	0.61.0.0.30	No
A5-5T.SYS	LDO	ARRET/DEPART	On/Off	0.61.0.0.31	No
A5-HUM4.HAL	LAI		Value	0.61.0.1.1	No
A5-HUM4.HPI_A582	LAI	HR PIECE A582	Value	0.61.0.1.2	No
A5-HUM4.HPI_A582A	LAI	HR PIECE A582A	Value	0.61.0.1.3	No
A5-HUM4.HPI_A573	LAI	HR PIECE A573	Value	0.61.0.1.4	No
A5-A526.TPI	LAI	T PIECE A526	Value	0.61.0.1.5	No
A5-UC565.TAL	LAI	T. ALI. EAU REFR	Value	0.61.0.1.6	Std
A5-A565.TPI	LAI		Value	0.61.0.1.7	Std
A-A515.TPI	LAI	TEMP PIECE 515	Value	0.61.0.1.8	Enh
IML.A-GREL1.ABN	LDI	BAS NIV CARBURAN	Status	0.61.0.3.1	Enh
IML.A-GREL1.ADMA	LDI	DEF MAJEUR	Status	0.61.0.3.2	Enh
IML.A-GREL1.ADMI	LDI	DEF MINEUR	Status	0.61.0.3.3	Enh
IML.A-GREL1.PM	LDI	ETAT MARCHE	Status	0.61.0.3.4	Enh
IML.A-GREL1.TRF	LDI	ETAT TR SWITCH	Status	0.61.0.3.5	Enh
IML.A-GREL1.ADBG	LDI	DEF BAT BLOC G	Status	0.61.0.3.6	Enh
IML.A-GREL1.ETAT_DISJONC	LDI	ETAT DISJONCTEUR	Status	0.61.0.3.7	Enh
IML.A-GREL2.EVER	LDI	ETAT VLV REFROI	Status	0.61.0.3.8	Enh
IML.A-GREL1.AUT	LDO	AUT DEP 2.25MW	On/Off	0.61.0.3.9	No
IML.A-GREL2.AUT	LDO	AUT DEP 600KW	On/Off	0.61.0.3.10	No
IML.A-GREL2.ABN	LDI	BAS NIV CARBURAN	Status	0.61.0.4.1	Enh
IML.A-GREL2.ADMA	LDI	DEF MAJEUR	Status	0.61.0.4.2	Enh
IML.A-GREL2.PM	LDI	ETAT MARCHE	Status	0.61.0.4.3	Enh
IML.A-GREL2.TRF	LDI	ETAT TR SWITCH	Status	0.61.0.4.4	Enh
IML.A-LKW	LAI	LEC KW	Value	0.61.0.5.1	No
A5-P571A_SIGNAL	LAI	SIGNAL POR A571A	Value	0.61.0.5.2	No
A5-P581_SIGNAL	LAI	SIGNAL POR A581	Value	0.61.0.5.3	No
A5-P571A_SUPPLY	LAO	SOURCE	Value	0.61.0.5.5	No
A5-P581_SUPPLY	LAO	SOURCE	Value	0.61.0.5.6	No
A5-A571.TPI	LAI	TEMP PIECE	Value	0.61.1.1.4	Std
A5-A571.MODE	LDO	MODE CHAUF REF	On/Off	0.61.1.1.5	No
BLOC G_PORTE-EXTERIEUR	LDI	S. GENERATRICE	Status	0.61.3.1.2	Enh
TAFC21	LAI	AIR FRAISC21	Value	0.70.0.1.1	No
TEVC21	LAI	EVAC C21	Value	0.70.0.1.2	Std
VC210E	L2SL	EVAC 210E	Proof	0.70.0.2.1	Std
VC211E	L2SL	EVAC 211E	Proof	0.70.0.2.2	Std
VC212E	L2SL	EVAC 212E	Proof	0.70.0.2.3	Std
VC213E	L2SL	EVAC 213E	Proof	0.70.0.2.4	Std
TREC21	LAI	RETOUR C21	Value	0.70.0.3.1	No
TALC21	LAI	ALIM C21	Value	0.70.0.3.2	Std
VC21A	L2SL	ALIM C2 1A	Proof	0.70.0.4.1	Std
VC21E	L2SL	EVAC C2 1A	Proof	0.70.0.4.2	Std
AL1CO	LDI	MONOX CARB C-120	Status	0.70.0.4.3	Std
AL2CO	LDI	MONOX CARB C-120	Status	0.70.0.4.4	Std
TRCC21	LAI	RECUPER C21	Value	0.70.0.5.1	No
TP2C21	LAI	SONDE 2 C21	Value	0.70.0.7.1	No
TP1C21	LAI	SONDE 1 C21	Value	0.70.0.7.2	Std

RFEC21	LAO	BYPASS REC	Value	0.70.0.8.1	No
SE1C21	LAO	SERP ELEC 200 KW	Value	0.70.0.8.2	No
DTCO1	LAI	DET.CO-1 C-117	Value	0.70.0.9.1	Std
DTNO21	LAI	DET.NO2-1 C-117	Value	0.70.0.9.2	Std
SE_C1-6	LAO	SEL MACHINE	Value	0.70.0.10.1	No
SE_C1-7	LAO	SEL SOUDURE	Value	0.70.0.10.2	No
DTCO2	LAI	DET.CO-2 C-117	Value	0.70.0.11.1	Std
DTNO22	LAI	DET.NO2-2 C-117	Value	0.70.0.11.2	Std
SE1C27	LAO	SERP ELEC 1	Value	0.70.0.12.1	No
RFEC27	LAO	REGIS ECHANG	Value	0.70.0.12.2	No
DTCO3	LAI	DET.CO-3 C-118	Value	0.70.0.13.1	Std
CHUC27	LAO	COM HUM S 2 7	Value	0.70.0.14.2	No
TPC110	LAI	ATEL SOUDURE	Value	0.70.0.15.1	Std
TPC109	LAI	ATEL MACHINE	Value	0.70.0.15.2	Std
KLXNAV	LDO	KLAXON DET.S.NAV	On/Off	0.70.0.16.2	No
TPC108	LAI	ATEL MACHINE	Value	0.70.0.17.1	Std
TPAC27	LAI	T PRECHF AIR	Value	0.70.0.17.2	No
VC21A	L2SL	ALIM C2 1A	On/Off	0.70.0.18.1	Std
TAEC27	LAI	TEMP AIR EV	Value	0.70.0.19.1	Std
TAAC27	LAI	TEMP ALIM	Value	0.70.0.19.2	No
TAA_C1-6	LAI	T AL MACHINE	Value	0.70.0.21.1	Std
TAA_C1-7	LAI	T AL SOUDURE	Value	0.70.0.21.2	Std
VC27A	L2SL	VENT C2 7	On/Off	0.70.0.22.1	No
VA_C1-6	L2SL	ATEL MACHINE	On/Off	0.70.0.22.2	No
HPC27	LAI	HR AMBIANTE	Value	0.70.0.23.1	No
TRAP9	LDO	P-TRAP Bloc-C	On/Off	0.70.0.24.1	No
SE3C27	LDO	SERP ELEC 3	On/Off	0.70.0.24.2	No
VC27E	LDI	ETAT C2 7E	Status	0.70.0.25.1	No
VC27A	L2SL	VENT C2 7	Proof	0.70.0.25.2	No
VA_C1-6	L2SL	ATEL MACHINE	Proof	0.70.0.25.3	No
ICV27D	LDI	SIGNAL DEP	Status	0.70.0.25.4	No
C17E	L2SL	ATEL SOUDURE	On/Off	0.70.0.26.1	No
VE_C1-7	L2SL	ATEL SOUDURE	On/Off	0.70.0.26.1	No
ICV27A	LDI	SIGNAL ARRET	Status	0.70.0.27.1	No
FC27E	LDI	ETAT FILTRES	Status	0.70.0.27.2	Std
FC27A	LDI	ETAT FILTRES	Status	0.70.0.27.3	Std
DF_C1-7	LDI	MINUTERIE	Status	0.70.0.27.4	No
C17A	L2SL	ATEL SOUDURE	On/Off	0.70.0.28.1	No
C17E	L2SL	ATEL SOUDURE	Proof	0.70.0.29.1	No
C17A	L2SL	ATEL SOUDURE	Proof	0.70.0.29.2	No
FLTR_C1-6	LDI	FILTRE	Status	0.70.0.29.3	No
FLTR_C1-7	LDI	FILTRE	Status	0.70.0.29.4	No
NIVEB1	LAI	NIV BASSIN	Value	0.11.0.0.1	Std
NIVEB2	LAI	NIV BASSIN	Value	0.11.0.0.2	Std
APEMER	LDI	POMP EAU MER	Status	0.11.0.0.3	Std
PEM3	L2SL	A D POMPE P3	Proof	0.11.0.0.4	Std
PEM4	L2SL	A D POMPE P4	Proof	0.11.0.0.5	Std
PEM1	L2SL	A D POMPE P1	Proof	0.11.0.0.6	Std
PEM2	L2SL	A D POMPE P2	Proof	0.11.0.0.7	Std
IML.E-PLUVIAL.AHN	LDI	FLOTTE HAUT NIV	Status	0.11.0.0.8	Std
BLOC E_PORTE-EXTERIEUR	LDI	PORTE EXTERIEUR	Status	0.11.0.0.9	Enh
BLOC F_PORTE-EXTERIEUR	LDI	PORTE EXTERIEUR	Status	0.11.0.0.10	Enh
PEM1	L2SL	A D POMPE P1	On/Off	0.11.0.0.21	Std
PEM2	L2SL	A D POMPE P2	On/Off	0.11.0.0.22	Std

PEM3	L2SL	A D POMPE P3	On/Off	0.11.0.0.23	Std
PEM4	L2SL	A D POMPE P4	On/Off	0.11.0.0.24	Std
B223	LAI	HOTTE B 223	Value	0.50.0.0.1	Enh
B2261	LAI	HOTTE B 226	Value	0.50.0.0.2	Enh
TPB514	LAI	PIECE 514	Value	0.50.0.0.3	Std
TPB515	LAI	PIECE 515	Value	0.50.0.0.4	Std
B2262	LAI	HOTTE B 226	Value	0.50.0.0.5	Enh
B227	LAI	HOTTE B 227	Value	0.50.0.0.6	Enh
B229	LAI	HOTTE B 229	Value	0.50.0.0.7	Enh
B236	LAI	HOTTE B 236	Value	0.50.0.0.8	Enh
B246	LAI	HOTTE B 246	Value	0.50.0.0.9	Enh
B330	LAI	HOTTE B 330	Value	0.50.0.0.10	Enh
B331	LAI	HOTTE B 331	Value	0.50.0.0.11	Enh
B332	LAI	HOTTE B 332	Value	0.50.0.0.12	Enh
B333	LAI	HOTTE B 333	Value	0.50.0.0.13	Enh
B334	LAI	HOTTE B 334	Value	0.50.0.0.14	Enh
B335	LAI	HOTTE B 335	Value	0.50.0.0.15	Enh
B346	LAI	HOTTE B 346	Value	0.50.0.0.16	Enh
B4191	LAI	HOTTE B 419	Value	0.50.0.0.17	Enh
B4192	LAI	HOTTE B 419	Value	0.50.0.0.18	Enh
B424	LAI	HOTTE B 424	Value	0.50.0.0.19	Enh
B234	LAI	HOTTE B 234	Value	0.50.0.0.20	Enh
B421S	LAI	HOT B421 SUD	Value	0.50.0.0.21	Enh
B421N	LAI	HOT B421 NOR	Value	0.50.0.0.22	Enh
HTB515	LDO	H TMP INFORM	On/Off	0.50.0.0.29	Std
BTPA01	LAI	T PIECE 01	Value	0.40.0.1.1	No
BTPA02	LAI	T PIECE 02	Value	0.40.0.1.2	No
BTPA03	LAI	T PIECE 03	Value	0.40.0.1.3	No
BTPA04	LAI	T PIECE 04	Value	0.40.0.1.4	No
BTPA05	LAI	T PIECE 05	Value	0.40.0.1.5	No
BTPA06	LAI	T PIECE 06	Value	0.40.0.1.6	No
BTPA07	LAI	T PIECE 07	Value	0.40.0.1.7	No
BTPA10	LAI	T PIECE 10	Value	0.40.0.1.8	No
BTPA08	LAI	T PIECE 08A	Value	0.40.0.2.1	No
BTPB08	LAI	T PIECE 08B	Value	0.40.0.2.2	No
BTPA09	LAI	T PIECE 09A	Value	0.40.0.2.3	No
BTPB09	LAI	T PIECE 09B	Value	0.40.0.2.4	No
BTPA11	LAI	T PIECE 11A	Value	0.40.0.2.5	No
BTPB11	LAI	T PIECE 11B	Value	0.40.0.2.6	No
BTPA12	LAI	T PIECE 12A	Value	0.40.0.2.7	No
BTPB12	LAI	T PIECE 12B	Value	0.40.0.2.8	No
BTPA13	LAI	T PIECE 13	Value	0.40.0.3.1	No
BTPA14	LAI	T PIECE 14	Value	0.40.0.3.2	No
DTCO4	LAI	DETEC.CO B-109	Value	0.40.0.3.3	Std
DTCO5	LAI	DETEC.CO B-101	Value	0.40.0.3.4	Std
TEB122	LAI	TEMP.RET.	Value	0.40.0.3.5	Std
PSB122	LAI	PRESS.STAT.	Value	0.40.0.3.6	Std
REFB11	L2SL	REFROIDIS	Proof	0.40.0.3.7	No
BVO01	LAO	VOLET UFC 01	Value	0.40.0.4.1	No
BVO02	LAO	VOLET UFC 02	Value	0.40.0.4.2	No
BVO03	LAO	VOLET UFC 03	Value	0.40.0.4.3	No
BVO04	LAO	VOLET UFC 04	Value	0.40.0.4.4	No
BVO05	LAO	VOLET UFC 05	Value	0.40.0.4.5	No
BVO06	LAO	VOLET UFC 06	Value	0.40.0.4.6	No

BVO07	LAO	VOLET UFC 07	Value	0.40.0.4.7	No
BVO08	LAO	VOLET UFC 08	Value	0.40.0.4.8	No
BVO09	LAO	VOLET UFC 09	Value	0.40.0.5.1	No
BVO10	LAO	VOLET UFC 10	Value	0.40.0.5.2	No
BVO11	LAO	VOLET UFC 11	Value	0.40.0.5.3	No
BVO12	LAO	VOLET UFC 12	Value	0.40.0.5.4	No
BVO13	LAO	VOLET UFC 13	Value	0.40.0.5.5	No
BVO14	LAO	VOLET UFC 14	Value	0.40.0.5.6	No
EPOM	LDO	PEM 1 2 3 4	On/Off	0.40.0.6.1	No
TALRS.1	LAI	TEMP ALIM REC AC	Value	0.1.0.1.1	No
TRECH	LAI	RET ECHANG	Value	0.1.0.1.2	Std
TRAG	LAI	RET.ANTIGEL	Value	0.1.0.1.3	No
TAA7	LAI	ALIM.ANTIGEL	Value	0.1.0.1.5	No
TAEFEC	LAI	TAL EAU FROIDE	Value	0.1.0.1.6	No
TAER	LAI	EAU TOUR REF	Value	0.1.0.1.7	No
TAA7	LAI	TEMP.AL.AIR	Value	0.1.0.1.8	No
TAMB7	LAI	TEMP.AMBIANT	Value	0.1.0.2.1	No
TRER	LAI	EAU TOUR REF	Value	0.1.0.2.2	Std
TAPEC1	LAI	T EAU GENER	Value	0.1.0.2.3	No
TAA3A	LAI	TEMP.ALI.AIR	Value	0.1.0.2.4	Std
TAMB3A	LAI	TEMP.AMBIANT	Value	0.1.0.2.5	Std
TASEC2	LAI	T AL REC GLY	Value	0.1.0.2.6	No
KW	LAI	L KW MAIN	Value	0.1.0.2.7	No
TREFEC	LAI	TEMP RET EAU FR	Value	0.1.0.2.8	No
V4	LAO	ROB. V4	Value	0.1.0.3.1	No
RAA7	LAO	REGIS.AL.AIR	Value	0.1.0.3.2	No
SE7	LAO	SERP.ELEC.	Value	0.1.0.3.3	No
RAM3A	LAO	REGIS.MELANG	Value	0.1.0.3.4	No
VSVREC	LAO	CTRL REC VAP	Value	0.1.0.3.5	No
A-CSC1	LAO	VE-16	Value	0.1.0.3.6	No
A-CSC2	LAO	VE-17	Value	0.1.0.3.7	No
A-561.CSM	LAO	VLV MODULATION	Value	0.1.0.3.8	No
OVO5A	LDO	UCAC ONO5A	On/Off	0.1.0.4.1	No
RV5A	LDO	UCAC RE5A	On/Off	0.1.0.4.2	No
OVO6A	LDO	UCAC ONO6A	On/Off	0.1.0.4.3	No
RV6A	LDO	UCAC RE6A	On/Off	0.1.0.4.4	No
AVTBUA	LDO	UCAC ABTBUA	On/Off	0.1.0.4.5	No
AVTBIA	LDO	UCAC ABTBIA	On/Off	0.1.0.4.6	No
P7	L2SL	POMPE P7	Proof	0.1.0.5.1	Std
P8	L2SL	POMPE P8	Proof	0.1.0.5.2	Std
CM7	LDI	COMM.MARCHE	Status	0.1.0.5.9	Enh
V7E	L2SL	VENT. A6.7E	Proof	0.1.0.5.10	No
A-528.P20_ALM	LDI	P20 EN ALARME	Status	0.1.0.5.11	Std
A-561.P21A_ALM	LDI	P21A EN ALARME	Status	0.1.0.5.12	Std
A-561.P21B_ALM	LDI	P21B EN ALARME	Status	0.1.0.5.13	Std
A-604.P22_ALM	LDI	P22 EN ALARME	Status	0.1.0.5.14	Std
HYDRO.PXCM1	LDI	PREUVE HYDRO	Status	0.1.0.5.15	No
P7	L2SL	POMPE P7	On/Off	0.1.0.6.1	Std
P8	L2SL	POMPE P8	On/Off	0.1.0.6.2	Std
A-561.P21B	LDO	PMP P21B	On/Off	0.1.0.6.3	No
A-604.P22	LDO	PMP P22	On/Off	0.1.0.6.4	No
A-528.P20	LDO	PMP P20	On/Off	0.1.0.6.5	No
A-561.P21A	LDO	PMP P21A	On/Off	0.1.0.6.6	No
REARM_TH_A600	LDO	REARMEMENT	On/Off	0.1.0.7.1	No

V7E	L2SL	VENT. A6.7E	On/Off	0.1.0.7.2 No
AVTCAA	LDO	EPSWITCH HEATPUM	On/Off	0.1.0.7.3 No
RVSMA	LDO	UCAC ABTCAA	On/Off	0.1.0.7.4 No
IML_A5-A515.CVE	LDO	CMD VLV EAU URG	On/Off	0.1.0.7.5 No
IML_A5-A565.CVE	LDO	CMD VLV EAU URG	On/Off	0.1.0.7.6 No
TEMECD	LAI	TEMP E.C.D	Value	0.1.0.8.1 Std
TAF1A	LAI	TEMP.A.FRAIS	Value	0.1.0.8.2 Std
TPA1A	LAI	AM2 1 TPA	Value	0.1.0.8.3 Std
TAA1A	LAI	TEMP.AL.AIR	Value	0.1.0.8.4 Std
ALORDI	LDI	ALARME PORDI	Status	0.1.0.8.5 No
TRA553	LAI	TEM REF A553	Value	0.1.0.8.6 Std
TRA554	LAI	TEM REF A554	Value	0.1.0.8.7 Std
PSA1	LAI	PRES STAT	Value	0.1.0.8.8 Std
AMPA1A	LAI	AMP AM2.1 A	Value	0.1.0.9.1 No
PST1	LAI	PRES STAT	Value	0.1.0.9.2 Std
AMPA1B	LAI	AMP AM2.1 B	Value	0.1.0.9.3 No
AMPA1C	LAI	AMP AM2.1 C	Value	0.1.0.9.4 No
TRERS	LAI	RES STOKAGE	Value	0.1.0.9.5 Std
TALT	LAI	ALI THP AM-1	Value	0.1.0.9.6 Enh
TRET	LAI	RET THP AM-1	Value	0.1.0.9.7 Enh
TRETP	LAI	TEMP RET THPMP	Value	0.1.0.9.8 No
VV7	LAO	CTRL PRECH	Value	0.1.0.10.1 No
VSE11A	LAO	SERP.ELEC.	Value	0.1.0.10.2 No
VSE12A	LAO	SERP.ELEC.	Value	0.1.0.10.3 No
VCST	LAO	VLV 3V AM-1	Value	0.1.0.10.6 No
VRP	LAO	BYPASS	Value	0.1.0.10.7 No
IML.RESTP.VE33.MOD	LAO	VLV RES BYPASS	Value	0.1.0.10.8 No
ACLORD	LDI	CLIMAT ORDI	Status	0.1.0.11.1 Std
AEORDI	LDI	PAN. EL ORDI	Status	0.1.0.11.2 Enh
CNTED2	LPACI	CNTR E DOM 2	Counter	0.1.0.11.4 No
FAM21	LDI	ETAT FILTRES	Status	0.1.0.11.6 Std
V3A	L2SL	VENT.AM2.3A	Proof	0.1.0.11.7 Std
GENURG	LDI	GENERATRICE	Status	0.1.0.11.8 No
ACK	LDI	ACCUSE RECEP	Status	0.1.0.11.9 No
V3A	L2SL	VENT.AM2.3A	On/Off	0.1.0.12.3 Std
RAF1A	LDO	AM2 1 RAF	On/Off	0.1.0.12.4 No
HORN2	LDO	ALAR CONS 2	On/Off	0.1.0.12.5 No
ALCHE1	LDI	ALM CH.ELEC1	Status	0.1.0.13.1 Std
CHE1P2	LDO	CH.ELEC1 P.2	On/Off	0.1.0.14.1 No
CHE1P3	LDO	CH.ELEC1 P.3	On/Off	0.1.0.14.3 No
CHE1P4	LDO	CH.ELEC1 P.4	On/Off	0.1.0.14.4 No
CHE1P5	LDO	CH.ELEC1 P.5	On/Off	0.1.0.14.5 No
CHE1P6	LDO	CH.ELEC1 P.6	On/Off	0.1.0.14.6 No
CHE1P7	LDO	CH.ELEC1 P.7	On/Off	0.1.0.15.1 No
ALCHE2	LDI	ALM CH.ELEC2	Status	0.1.0.16.1 Std
P12	L2SL	POMPE P12	Proof	0.1.0.16.4 Std
P13	L2SL	POMPE P13	Proof	0.1.0.16.5 Std
CHE2P2	LDO	CH.ELEC2 P.2	On/Off	0.1.0.17.2 No
CHE2P3	LDO	CH.ELEC2 P.3	On/Off	0.1.0.17.3 No
CHE2P4	LDO	CH.ELEC2 P.4	On/Off	0.1.0.17.4 No
CHE2P5	LDO	CH.ELEC2 P.5	On/Off	0.1.0.17.5 No
CHE2P6	LDO	CH.ELEC2 P.6	On/Off	0.1.0.17.6 No
CHE2P7	LDO	CH.ELEC2 P.7	On/Off	0.1.0.18.1 No
P12	L2SL	POMPE P12	On/Off	0.1.0.18.5 Std

P13	L2SL	POMPE P13	On/Off	0.1.0.18.6 Std
URGEXT	LDI	URGENCE EXTR	Status	0.1.0.19.1 Std
VAM24T	L2SL	RECIRC AM1	Proof	0.1.0.19.2 Std
VAM25T	L2SL	RECIRC AM1	Proof	0.1.0.19.3 Std
PECD	L2SL	EAU CH DOM	Proof	0.1.0.19.5 Std
ALCHPV	LDI	ALM CH PROP	Status	0.1.0.19.6 Std
ALMPR2	LDI	PROPANE AM-1	Status	0.1.0.19.7 Std
ALMPR1	LDI	PROPANE AM-1	Status	0.1.0.19.8 Std
VRECUP	LDO	RECUP GENER	On/Off	0.1.0.20.1 No
VVIDAN	LDO	VIDAN GENER	On/Off	0.1.0.20.2 No
GENTR	LDO	TRANSF GENER	On/Off	0.1.0.20.3 No
VAM24T	L2SL	RECIRC AM1	On/Off	0.1.0.20.4 Std
VAM25T	L2SL	RECIRC AM1	On/Off	0.1.0.20.5 Std
PECD	L2SL	EAU CH DOM	On/Off	0.1.0.21.1 Std
CHPV1P	LDO	CH PROP P1	On/Off	0.1.0.21.2 No
IML.A-MEC-ASC.LUM_GEN	LDO	LUM TEMOIN GENER	On/Off	0.1.0.21.3 No
ALCHEV	LDI	ALM.CHAU.VAP	Status	0.1.0.22.1 Std
V9EA	L2SL	VENT.A6.9E	Proof	0.1.0.22.2 Std
PAM1	LDI	SALLE MEC	Status	0.1.0.22.3 Enh
PA501	LDI	PIECE A501	Status	0.1.0.22.4 No
PA514	LDI	PIECE A514	Status	0.1.0.22.5 Enh
PA523	LDI	PIECE A523	Status	0.1.0.22.6 Enh
PA529	LDI	PIECE A529	Status	0.1.0.22.7 Enh
PA531	LDI	PIECE A531	Status	0.1.0.22.8 Enh
CHEV1P	LDO	CHAU ELEC P1	On/Off	0.1.0.23.1 No
CHEV2P	LDO	CHAU ELEC P2	On/Off	0.1.0.23.2 No
CHEV3P	LDO	CHAU ELEC P3	On/Off	0.1.0.23.3 No
CHEV4P	LDO	CHAU ELEC P4	On/Off	0.1.0.23.4 No
CHEV5P	LDO	CHAU ELEC P5	On/Off	0.1.0.23.5 No
CHEV6P	LDO	CHAU ELEC P6	On/Off	0.1.0.23.6 No
CHEV7P	LDO	CHAU ELEC P7	On/Off	0.1.0.24.1 No
CHEV8P	LDO	CHAU ELEC P8	On/Off	0.1.0.24.2 No
V9EA	L2SL	VENT.A6.9E	On/Off	0.1.0.24.4 Std
ETAGE	LDO	ETA BUR BLCA	On/Off	0.1.0.24.5 No
ECD11	LDO	RES.1.ELEM.2	On/Off	0.1.0.26.1 No
ECD12	LDO	RES.1.ELEM.2	On/Off	0.1.0.26.2 No
ECD13	LDO	RES.1.ELEM.3	On/Off	0.1.0.26.3 No
ECD21	LDO	RES.2.ELEM.1	On/Off	0.1.0.26.4 No
ECD22	LDO	RES.2.ELEM.2	On/Off	0.1.0.26.5 No
ECD23	LDO	RES.2.ELEM.3	On/Off	0.1.0.26.6 No
GENERA	LDO	GENERATRICE	On/Off	0.1.0.27.1 No
A5-REARM_THERMO	LDO	RESET THERMO	On/Off	0.1.0.27.4 No
ADMIN	LDO	SEC.ADMINIST	On/Off	0.1.0.27.5 No
TRAP2	LDO	P-TRAP Bloc-A	On/Off	0.1.0.27.6 No
A-528.TRE	LAI	TEM RET THERMO	Value	0.1.0.28.1 Enh
A-528.TALZ	LAI	TEM ALIM ZONE	Value	0.1.0.28.2 Enh
A-561.TRE	LAI	TEM RET THERMO	Value	0.1.0.28.3 Enh
A-561.TALZ	LAI	TEM ALIM ZONE	Value	0.1.0.28.4 Enh
A-604.TRE	LAI	TEM RET THERMO	Value	0.1.0.28.5 Enh
A-604.LPS	LAI	LECT PRESSION	Value	0.1.0.28.6 No
A-604.TALZ	LAI	TEM ALIM ZONE	Value	0.1.0.28.7 Enh
PVALCH	LAI	PRES VAP ALIM	Value	0.1.0.28.8 No
A-604.CSM	LAO	VLV MODULATION	Value	0.1.0.29.1 No
A-604.CSP	LAO	VLV BYPASS	Value	0.1.0.29.2 No

A-528.CSM	LAO	VLV MODULATION	Value	0.1.0.29.3	No
A-528.CSP	LAO	VLV DERIVATION	Value	0.1.0.29.4	No
TAECHE	LAI	TAL.EAU CHAUD EL	Value	0.1.0.29.5	No
TAETP	LAI	TEMP ALIM THPMP	Value	0.1.0.29.6	Std
CHE1P1	LAO	MODULATION SCR	Value	0.1.0.29.7	No
CHE2P1	LAO	MODULATION SCR	Value	0.1.0.29.8	No
IML.RESTP.PS3	LAI	PRES SUCC P19	Value	0.1.0.30.1	Std
IML.RESTP.PS2	LAI	PRES SUCC P18	Value	0.1.0.30.2	Std
IML.RESTP.PS1	LAI	PRES RES SEC	Value	0.1.0.30.3	No
IML.RESTP.VE14.MOD	LAO	VLV RES BYPASS	Value	0.1.0.30.4	No
IML.RESTP.VE13A.POS	LAI	POSITION VLV	Value	0.1.0.30.5	No
IML.RESTP.VE13B.POS	LAI	POSITION VLV	Value	0.1.0.30.6	No
IML.RESTP.VE14.POS	LAI	POSITION VLV	Value	0.1.0.30.7	No
IML.RESTP.VE33.POS	LAI	POSITION VLV	Value	0.1.0.30.8	No
IML.RESTP.PD.CHFR	LAI	PRES CHAMBRE FR	Value	0.1.0.31.1	Std
HPB264	LAI	HUM PI	Value	0.1.0.32.1	Std
HPB217	LAI	HUM PI	Value	0.1.0.32.2	Std
HPB363	LAI	HUM PI	Value	0.1.0.32.3	Std
HPB315	LAI	HUM PI	Value	0.1.0.32.4	Std
HPB445	LAI	HUM PI	Value	0.1.0.32.5	Std
HPB413	LAI	HUM PI	Value	0.1.0.32.6	Std
HRAA1A	LAI	HUM AM	Value	0.1.0.32.7	No
HRAA2A	LAI	HUM AM	Value	0.1.0.32.8	Std
HRAA3A	LAI	HUM AM	Value	0.1.0.33.1	No
CHUM1	LAO	HUM. A	Value	0.1.0.33.2	No
CHUM2	LAO	HUM.2 AM2	Value	0.1.0.33.3	No
CHUM3	LAO	HUM. A	Value	0.1.0.33.4	No
VLV.VAP.ECD	LAO	VALVE VAPEUR	Value	0.1.0.33.5	No
TAL.ECH.ECD	LAI	TEMP ALIM	Value	0.1.0.33.6	Std
IML.RESTP.VE35.MOD	LAO	VLV ISOLEMENT RE	Value	0.1.0.33.7	No
IML.RESTP.VE35.POS	LAI	POSITION VALVE	Value	0.1.0.33.8	No
IML.RESTP.VE32.MOD	LAO	MAKE-UP	Value	0.1.0.34.1	No
A-ECM201.TECR	LAI	TEMP RET EAU CH	Value	0.1.0.34.2	No
A-ECM201.TECA	LAI	TEMP AL EAU CH	Value	0.1.0.34.3	No
IML.CNT_TOUR_EAU_TR.CHIMIQUE	LAO		Value	0.1.0.34.5	No
NIV1	LDI	NIVEAU	Status	0.1.2.32.1	No
NIV2	LDI	DEM. REMPLISSAGE	Status	0.1.2.32.2	No
PB601A	LDI	PORTE B601A	Status	0.1.2.32.3	Enh
CAQ1	LDO	VLV REMPLIS TE1	On/Off	0.1.2.33.1	No
CAQ2	LDO	VLV REMPLIS TE2	On/Off	0.1.2.33.2	No
CDR1	LAO	VLV DRAIN TOUR 1	Value	0.1.2.34.1	Std
CDR2	LAO	VLV DRAIN TOUR 2	Value	0.1.2.34.2	Std
IML.TE1.VE36.MOD	LAO	VLV ISOL TOUR 1	Value	0.1.2.34.3	Std
IML.TE2.VE34.MOD	LAO	VLV ISOL TOUR 2	Value	0.1.2.34.4	No
IML.CNT_TOUR_EAU	LAI	CNTR EAU TOUR	Value	0.1.2.34.5	No
IML.CNT_TOUR_EAU-MOIS	LAI	CNTR EAU TOUR	Value	0.1.2.34.5	No
F_C2-8	LDI	IND PRES FLT	Status	0.10.0.1.1	No
C28APR	LDI	PREUVE DE MARCHE	Status	0.10.0.1.2	No
VA_C2-8	L2SL	ENTREPOT C	Proof	0.10.0.1.2	Std
VC219E	L2SL	A D E	Proof	0.10.0.1.3	Std
PC124A	LDI	PORTE C124A	Status	0.10.0.1.4	Enh
PC124B	LDI	PORTE C124B	Status	0.10.0.1.5	Enh
PC127A	LDI	PORTE C127A	Status	0.10.0.1.6	Enh
PC127B	LDI	PORTE C127B	Status	0.10.0.1.7	Enh



DDC12X	LDI	DOUCHE P TOX	Status	0.10.0.1.8 Enh
VC220E	L2SL	A D E	Proof	0.10.0.1.9 Std
GAZ124A	LDI	GAZ EXPL. C-124A	Status	0.10.0.1.10 Std
PC124	LDI	PORTE C124	Status	0.10.0.1.11 Enh
PHNORD	LDI	PORTE HANGAR NOR	Status	0.10.0.1.12 Enh
PHSUD	LDI	PORTE HANGAR SUD	Status	0.10.0.1.13 Enh
PHEST	LDI	PORTE HANGAR EST	Status	0.10.0.1.14 Enh
PHOUEST	LDI	PORTE HANGAR OUE	Status	0.10.0.1.15 Enh
TAA_C2-8	LAI	ENTREPOT C	Value	0.10.0.2.1 Std
TPC124A	LAI	DECHET SPEC	Value	0.10.0.2.2 Std
TPC123	LAI	GAZ COMP INF	Value	0.10.0.2.3 Std
HRA_C2-8	LAI	HUM RET	Value	0.10.0.2.4 No
TPC124B	LAI	GAZ COMP TOX	Value	0.10.0.2.5 Std
TPC126	LAI	PROD FORMOL	Value	0.10.0.2.6 No
TPC125	LAI	PROD ATELIER	Value	0.10.0.2.7 Std
TRC127	LAI	TEM REF C127	Value	0.10.0.2.8 Std
SE_C2-8	LAO	SERP EL VC2-8	Value	0.10.0.3.1 No
HU_C2-8	LAO	HUMIDIFICATE	Value	0.10.0.3.2 No
VA_C2-8	L2SL	ENTREPOT C	On/Off	0.10.0.4.1 Std
VC219E	L2SL	A D E	On/Off	0.10.0.4.2 Std
VC220E	L2SL	A D E	On/Off	0.10.0.4.3 Std
UAC140	LDI	Info.Déma. Reset	Status	0.3.0.1.1 Std
BPA	LDI	B.PRESS.AIR	Status	0.3.0.1.2 Enh
ALREF1	LDI	FUITE REFR 1	Status	0.3.0.1.3 Std
ALREF2	LDI	FUITE REFR 2	Status	0.3.0.1.4 Std
BNMER	LDI	B.NIV.E.M.R.	Status	0.3.0.1.5 No
PMP1	LDI	DEMAR.POMPE1	Status	0.3.0.1.6 No
PMP2	LDI	DEMAR.POMPE2	Status	0.3.0.1.7 No
AHNMER	LDI	PMPEMR AHNEM	Status	0.3.0.1.8 Std
TREERT	LDI		Status	0.3.0.1.9 No
VB15A	L2SL	VENT.BM1.15A	Proof	0.3.0.1.9 Std
TPB15	LAI	TEMP.AMBIANT	Value	0.3.0.2.1 Std
TAMB15	LAI	TEMP.AIR.MEL	Value	0.3.0.2.2 No
DEMB5	LAI	POMPAGE E.M.	Value	0.3.0.2.3 No
DEMB6	LAI	DEB H. SAL.	Value	0.3.0.2.4 No
DEMB7	LAI	DEB E CULT.	Value	0.3.0.2.5 No
DEMB1	LAI	DEB E M NOUV	Value	0.3.0.2.6 No
ALC119	LAI	ALARME PC119	Value	0.3.0.2.7 No
ALC120	LAI	ALARME PC120	Value	0.3.0.2.8 No
ALESC3	LAI	ALARME ESCC3	Value	0.3.0.3.1 No
ALB124	LAI	ALARME PB124	Value	0.3.0.3.2 No
ALESB1	LAI	ALARME ESCB1	Value	0.3.0.3.3 No
ALESB4	LAI	ALARME ESCB4	Value	0.3.0.3.4 No
RAMB15	LAO	REGIS.MELANG	Value	0.3.0.3.5 No
SE1B15	LAO	SERP.ELEC	Value	0.3.0.3.6 No
VB15A	L2SL	VENT.BM1.15A	On/Off	0.3.0.4.1 Std
REOB	LDO	REARM.TH.PMP	On/Off	0.3.0.4.2 No
REEB	LDO	REARM.TH.PMP	On/Off	0.3.0.4.3 No
RECB	LDO	REARM.TH.PMP	On/Off	0.3.0.4.4 No
TRAP3	LDO	Bloc - B 1 et 2	On/Off	0.3.0.4.5 No
ALSOUF	LDI	AIR COM SOUF	Status	0.3.0.5.1 Std
DDB121	LDI	DOUCHE B121	Status	0.3.0.5.2 Enh
DDB125	LDI	DOUCHE B125	Status	0.3.0.5.3 Enh
DD151	LDI	DOUCHE B151	Status	0.3.0.5.4 Enh



DDB134	LDI	DOUCHE B134	Status	0.3.0.5.5	Enh
DDB145	LDI	DOUCHE B145	Status	0.3.0.5.6	Enh
DDB105	LDI	DOUCHE B105	Status	0.3.0.5.7	Enh
DDB160	LDI	DOUCHE B160	Status	0.3.0.5.8	Enh
DD117	LDI	DOUCHE B117	Status	0.3.0.5.9	Enh
DDB126	LDI	DOUCHE B126	Status	0.3.0.5.10	Enh
FBM115	LDI	ETAT.FILTRES	Status	0.3.0.5.11	Std
IML.B-BM1-ECH1.ABD	LDI	PREUVE D'AIR	Status	0.3.0.5.12	No
IML.B-BM1-ECH1.BLT	LDI	BASSE LIMITE ECH	Status	0.3.0.5.14	No
CENTR1	LDO	ECL CENTRE B	On/Off	0.3.0.6.1	No
OUEST1	LDO	ECL 1 OUEST	On/Off	0.3.0.6.2	No
SOUF	LDO	SOUFFLANTE	On/Off	0.3.0.6.3	No
IML.B-BM1-ECH1.CVO	LDO	VOLET PAF & EVAC	On/Off	0.3.0.6.4	No
IML.B-BM1-ECH1.SYS	L2SL	AD UNITE	On/Off	0.3.0.6.5	Std
IML.B-BM1-ECH1.PFIA	LAI	PRESSION F.PAF	Value	0.3.0.7.1	No
IML.B-BM1-ECH1.PFIR	LAI	PRESSION F.RET	Value	0.3.0.7.2	No
IML.B-BM1-ECH1.TAF	LAI	TEMP PAF	Value	0.3.0.7.3	No
IML.B-BM1-ECH1.TAL	LAI	TEMP ALIM	Value	0.3.0.7.5	No
IML.B-BM1-ECH1.MSE1	LAO	SERPENTIN PAF	Value	0.3.0.7.6	No
IML.B-BM1-ECH1.MSE2	LAO	SERPENTIN ALIM	Value	0.3.0.7.7	No
IML.B-BM1-ECH1.AMP	LAI	AMPERE ECH1	Value	0.3.0.7.8	No
B11A.SYA	L2SL	A/D SYST B1-1A	On/Off	0.4.0.1.1	Std
B12A.SYA	L2SL	A/D SYST B1-2A	On/Off	0.4.0.1.2	Std
PORLEV	LDO	PORTE LEVANT	On/Off	0.4.0.1.3	No
GRBASS	LDO	ECLAIRGR.BASSINS	On/Off	0.4.0.1.4	No
EST2	LDO	ECLAIR B-EST-2	On/Off	0.4.0.1.6	No
B11A.REF.ST1	LDO	STAGE REF 1	On/Off	0.4.0.2.1	No
B11A.REF.ST2	LDO	STAGE REF 2	On/Off	0.4.0.2.2	No
B11A.SYR	L2SL	A/D SYST B1-1R	On/Off	0.4.0.2.4	Std
B12A.SYR	L2SL	A/D SYST B1-2R	On/Off	0.4.0.2.5	Std
B13A.SYR	L2SL	SYSTEME B13A	On/Off	0.4.0.2.6	Std
B11A.TME	LAI	TEMP MELANGE	Value	0.4.0.3.6	No
B12A.TAL	LAI	TEMP ALIMENT	Value	0.4.0.3.7	Enh
B11A.TRE	LAI	TEMP RETOUR	Value	0.4.0.3.8	No
B11A.SYA	L2SL	A/D SYST B1-1A	Proof	0.4.0.4.1	Std
B12A.SYA	L2SL	A/D SYST B1-2A	Proof	0.4.0.4.2	Std
B11A.SYR	L2SL	A/D SYST B1-1R	Proof	0.4.0.4.3	Std
B12A.SYR	L2SL	A/D SYST B1-2R	Proof	0.4.0.4.4	Std
B13A.SYR	L2SL	SYSTEME B13A	Proof	0.4.0.4.5	Std
PBESC2	LDI	ESCALIER B2	Status	0.4.0.4.7	Enh
PBESC3	LDI	ESCALIER B3	Status	0.4.0.4.8	Enh
PB109	LDI	PIECE B109	Status	0.4.0.4.9	Enh
AINOND	LDI	ALM P B109	Status	0.4.0.4.10	No
DD419V	LDI	DOUCHE PIECE 419	Status	0.4.0.4.11	Enh
DD224V	LDI	DOUCHE PIECE 224	Status	0.4.0.4.12	Enh
DD227V	LDI	DOUCHE PIECE 227	Status	0.4.0.4.13	Enh
DD226V	LDI	DOUCHE PIECE 226	Status	0.4.0.4.14	Enh
B12A.TRE	LAI	TEMP RETOUR	Value	0.4.0.5.1	No
B11A.HRE	LAI	HUM RETOUR	Value	0.4.0.5.2	No
B12A.HRE	LAI	HUM RETOUR	Value	0.4.0.5.3	No
B11A.TPIE	LAI	TEMP PIECE	Value	0.4.0.5.4	No
B12A.TPIE	LAI	TEMP PIECE	Value	0.4.0.5.5	No
B11A.TAL	LAI	TEMP ALIMENT	Value	0.4.0.5.6	Enh
B11A.HAF	LAI	HUM AIR FRAIS	Value	0.4.0.5.7	No

B12A.CVM	LAO	VOLET	Value	0.4.0.6.1	No
B11A.SELEC	LAO	SERPENTIN ELECT	Value	0.4.0.6.2	No
B12A.SELEC	LAO	SERPENTIN ELECT	Value	0.4.0.6.3	No
B12A.CRE	LAO	VALVE EAU FROIDE	Value	0.4.0.6.4	No
B11A.CVM	LAO	VOLET	Value	0.4.0.6.6	No
B-293.CVD10	LAO	VOLET DIFFUSEUR	Value	0.4.0.7.1	No
B12A.TME	LAI	TEMP MELANGE	Value	0.4.0.7.5	No
B12A.TRER	LAI	T'URE ALI EAU FR	Value	0.4.0.8.1	No
B12A.TAER	LAI	T'URE ALI EAU FR	Value	0.4.0.8.2	No
B11A.FIL	LAI	PRESSION FILTRES	Value	0.4.0.8.3	No
B12A.FIL	LAI	PRESSION FILTRES	Value	0.4.0.8.4	No
B13A.TPIE	LAI	T'URE PIECE	Value	0.4.0.8.6	No
B13A.CVO	LAO	VOLETS	Value	0.4.0.9.1	No
B-293.CVD11	LAO	VOLET DIFFUSEUR	Value	0.4.0.9.2	No
B-293.CVD12	LAO	VOLET DIFFUSEUR	Value	0.4.0.9.3	No
B-293.CVD13	LAO	VOLET DIFFUSEUR	Value	0.4.0.9.4	No
B-293.CVD1	LAO	VOLET DIFFUSEUR	Value	0.4.0.9.8	No
B-293.CVD2	LAO	VOLET DIFFUSEUR	Value	0.4.0.10.1	No
B-293.CVD3	LAO	VOLET DIFFUSEUR	Value	0.4.0.10.2	No
B-293.CVD4	LAO	VOLET DIFFUSEUR	Value	0.4.0.10.3	No
B-293.CVD5	LAO	VOLET DIFFUSEUR	Value	0.4.0.10.4	No
B-293.CVD6	LAO	VOLET DIFFUSEUR	Value	0.4.0.10.5	No
B-293.CVD7	LAO	VOLET DIFFUSEUR	Value	0.4.0.10.6	No
B-293.CVD8	LAO	VOLET DIFFUSEUR	Value	0.4.0.10.7	No
B-293.CVD9	LAO	VOLET DIFFUSEUR	Value	0.4.0.10.8	No
DDB109	LDI	DOUCHE B109	Status	0.5.0.1.1	Enh
DDB421	LDI	DOUCHE B421	Status	0.5.0.1.2	Enh
DDB235	LDI	DOUCHE B235	Status	0.5.0.1.3	Enh
DDB323	LDI	DOUCHE B323	Status	0.5.0.1.4	Enh
DDB334	LDI	DOUCHE B334	Status	0.5.0.1.5	Enh
DDB346	LDI	DOUCHE B346	Status	0.5.0.1.6	Enh
DDB425	LDI	DOUCHE B425	Status	0.5.0.1.7	Enh
DDB424	LDI	DOUCHE B424	Status	0.5.0.1.8	Enh
PS7E	LAI	P S AIR EVAC	Value	0.5.0.2.1	Std
ALES2T	LAI	ALARME ESC2T	Value	0.5.0.2.2	No
AVT1B	LDO	UCAC AVT1B	On/Off	0.5.0.3.1	No
OVO1B	LDO	UCAC OVO1B	On/Off	0.5.0.3.2	No
ONV5EB	LDO	UCAC ONV5EB	On/Off	0.5.0.3.3	No
ABV3EB	LDO	UCAC ABV3EB	On/Off	0.5.0.3.4	No
ABV2EB	LDO	UCAC ABV2EB	On/Off	0.5.0.3.5	No
ABV4EB	LDO	UCAC ABV4EB	On/Off	0.5.0.3.6	No
EST4	LDO	ECL B EST	On/Off	0.5.0.4.1	No
TRAP5	LDO	B. 3-4-5 EST	On/Off	0.5.0.4.2	No
ONO2EB	LDO	B NIV 2 EST	On/Off	0.5.0.4.3	No
ONO3EB	LDO	B NIV 3 EST	On/Off	0.5.0.4.4	No
ONO4EB	LDO	B NIV 4 EST	On/Off	0.5.0.4.5	No
REARM_TH_B200_EST	LDO	REARMEMENT	On/Off	0.5.0.4.6	No
B-5EST.TRE	LAI	TEM RET THERMO	Value	0.5.0.7.1	Enh
B-5EST.TALZ	LAI	TEM ALIM ZONE	Value	0.5.0.7.2	Enh
B-422.TRE	LAI	TEM RET THERMO	Value	0.5.0.7.3	Enh
B-422.TALZ	LAI	TEM ALIM ZONE	Value	0.5.0.7.4	Enh
B-328.TRE	LAI	TEM RET THERMO	Value	0.5.0.7.5	Enh
B-328.TALZ	LAI	TEM ALIM ZONE	Value	0.5.0.7.6	Enh
B-247.TRE	LAI	TEM RET THERMO	Value	0.5.0.7.7	Enh

B-247.TALZ	LAI	TEM ALIM ZONE	Value	0.5.0.7.8	Enh
B-5EST.CSM	LAO	VLV MODULATION	Value	0.5.0.8.1	No
B-5EST.CSP	LAO	VLV DERIVATION	Value	0.5.0.8.2	No
B-422.CSM	LAO	VLV MODULATION	Value	0.5.0.8.3	No
B-328.CSM	LAO	VLV MODULATION	Value	0.5.0.8.4	No
B-247.CSP	LAO	VLV DERIVATION	Value	0.5.0.8.5	No
B-247.CSM	LAO	VLV MODULATION	Value	0.5.0.8.6	No
B-5EST.P31_ALM	LDI	P31 EN ALARME	Status	0.5.0.9.1	Std
B-422.P29_ALM	LDI	P29 EN ALARME	Status	0.5.0.9.2	Std
B-328.P27A_ALM	LDI	P27A EN ALARME	Status	0.5.0.9.3	Std
B-328.P27B_ALM	LDI	P27B EN ALARME	Status	0.5.0.9.4	Std
B-247.P25A_ALM	LDI	P25A EN ALARME	Status	0.5.0.9.5	Std
B-247.P25B_ALM	LDI	P25B EN ALARME	Status	0.5.0.9.6	Std
B-5EST.P31	LDO	PMP P31	On/Off	0.5.0.10.1	No
B-422.P29	LDO	PMP P29	On/Off	0.5.0.10.2	No
B-328.P27A	LDO	PMP P27A	On/Off	0.5.0.10.3	No
B-328.P27B	LDO	PMP P27B	On/Off	0.5.0.10.4	No
B-247.P25A	LDO	PMP P25A	On/Off	0.5.0.10.5	No
B-247.P25B	LDO	PMP P25B	On/Off	0.5.0.10.6	No
VA145E	L2SL	VENT A B145E	On/Off	0.6.0.1.1	Std
OUEST4	LDO	B NIV 4 OUES	On/Off	0.6.0.1.4	No
OEST5V	LDO	ECLAIR OUESV	On/Off	0.6.0.1.5	No
REARM_TH_B200_OUEST	LDO	REARMEMENT	On/Off	0.6.0.1.6	No
PS6E	LAI	P S AIR EVAC	Value	0.6.0.3.6	Std
VA145E	L2SL	VENT A B145E	Proof	0.6.0.4.1	Std
DD459V	LDI	PIECE B459	Status	0.6.0.4.2	Enh
DD460V	LDI	PIECE B460	Status	0.6.0.4.3	Enh
HYDRO	LDI	PREUV MARCHE	Status	0.6.0.4.4	No
DD467	LDI	DOUCHE B467	Status	0.6.0.4.5	Enh
DD462V	LDI	YEUX DD462	Status	0.6.0.4.6	Enh
DD454V	LDI	YEUX DD454	Status	0.6.0.4.7	Enh
V5E1V	LDI	B6 5 V5E1V	Status	0.6.0.4.8	No
V5EV	LDI	B6 5 V5EV	Status	0.6.0.4.9	No
ICV5EV	LDI	B6 5 ICV5EV	Status	0.6.0.4.12	No
LAV	LDI	B6 5 LAV	Status	0.6.0.4.13	No
ALB601	LDI	ALARME PB601	Status	0.6.0.4.14	No
ALB602	LDI	ALARME PB602	Status	0.6.0.4.15	No
ALES1T	LDI	ALARME ESC1T	Status	0.6.0.4.16	No
B-5OUEST.TRE	LAI	TEM RET THERMO	Value	0.6.0.7.1	Enh
B-5OUEST.TALZ	LAI	TEM ALIM ZONE	Value	0.6.0.7.2	Enh
B-457.TRE	LAI	TEM RET THERMO	Value	0.6.0.7.3	Enh
B-457.TALZ	LAI	TEM ALIM ZONE	Value	0.6.0.7.4	Enh
B-373.TRE	LAI	TEM RET THERMO	Value	0.6.0.7.5	Enh
B-373.TALZ	LAI	TEM ALIM ZONE	Value	0.6.0.7.6	Enh
B-271.TRE	LAI	TEM RET THERMO	Value	0.6.0.7.7	Enh
B-271.TALZ	LAI	TEM ALIM ZONE	Value	0.6.0.7.8	Enh
B-271.LPS	LAI	LECT PRESSION	Value	0.6.0.8.1	Std
B-155.TRE	LAI	TEM RET THERMO	Value	0.6.0.8.2	Enh
B-155.TALZ	LAI	TEM ALIM ZONE	Value	0.6.0.8.3	Enh
B-5OUEST.CSP	LAO	VLV DERIVATION	Value	0.6.0.9.1	No
B-5OUEST.CSM	LAO	VLV MODULATION	Value	0.6.0.9.2	No
B-457.CSM	LAO	VLV MODULATION	Value	0.6.0.9.3	No
B-373.CSP	LAO	VLV DERIVATION	Value	0.6.0.9.4	No
B-373.CSM	LAO	VLV MODULATION	Value	0.6.0.9.5	No

B-271.CSP	LAO	VLV DERIVATION	Value	0.6.0.9.6	No
B-271.CSM	LAO	VLV MODULATION	Value	0.6.0.9.7	No
B-155.CSM	LAO	VLV MODULATION	Value	0.6.0.9.8	No
B-5OUEST.P30_ALM	LDI	P30 EN ALARME	Status	0.6.0.10.1	Std
B-457.P28_ALM	LDI	P28 EN ALARME	Status	0.6.0.10.2	Std
B-373.P26_ALM	LDI	P26 EN ALARME	Status	0.6.0.10.3	Std
B-271.P24_ALM	LDI	P24 EN ALARME	Status	0.6.0.10.4	Std
B-155.P23A_ALM	LDI	P23A EN ALARME	Status	0.6.0.10.5	Std
B-155.P23B_ALM	LDI	P23B EN ALARME	Status	0.6.0.10.6	Std
B-5OUEST.P30	LDO	PMP P30	On/Off	0.6.0.11.1	No
B-457.P28	LDO	PMP P28	On/Off	0.6.0.11.2	No
B-373.P26	LDO	PMP P26	On/Off	0.6.0.11.3	No
B-271.P24	LDO	PMP P24	On/Off	0.6.0.11.4	No
B-155.P23A	LDO	PMP P23A	On/Off	0.6.0.11.5	No
B-155.P23B	LDO	PMP P23B	On/Off	0.6.0.11.6	No
BTSPMP	LDI	GEL STA POMP	Status	0.6.1.14.1	No
DD267	LDI	DOUCHE B267	Status	0.6.1.14.2	Enh
DD270	LDI	DOUCHE B270	Status	0.6.1.14.3	Enh
DD375	LDI	DOUCHE B375	Status	0.6.1.14.4	Enh
DD374	LDI	DOUCHE B374	Status	0.6.1.14.5	Enh
DDB488	LDI	LY B488	Status	0.6.1.14.6	Enh
DDB368	LDI	DOUCHE B368	Status	0.6.1.14.7	Enh
DDB377	LDI	DOUCHE B377	Status	0.6.1.14.8	Enh
DDB269	LDI	DOUCHE B269	Status	0.6.1.14.9	Enh
PB200	LDI	PORTE B200	Status	0.6.1.14.10	Enh
OUEST2	LDO	B NIV 2 OUES	On/Off	0.6.1.15.1	No
OUEST3	LDO	B NIV 3 OUES	On/Off	0.6.1.15.2	No
TRAP6	LDO	B. 3-4-5 ouest	On/Off	0.6.1.15.3	No
ONO2OB	LDO	B NIV 2 OUES	On/Off	0.6.1.15.4	No
ONO4OB	LDO	B NIV 4 OUES	On/Off	0.6.1.15.5	No
ONO3OB	LDO	B NIV 3 OUES	On/Off	0.6.1.15.6	No
ONO5OB	LDO	B NIV 5 OUES	On/Off	0.6.1.16.1	No
ABT2OB	LDO	B NIV 2 OUES	On/Off	0.6.1.16.2	No
ABT3OB	LDO	B NIV 3 OUES	On/Off	0.6.1.16.3	No
ABT4OB	LDO	B NIV 4 OUES	On/Off	0.6.1.16.4	No
VC22A	L2SL	VENT C2 2A	On/Off	0.7.0.1.1	Std
V4E	L2SL	VENT. C2.4E	On/Off	0.7.0.1.2	No
REC	LDO	REARM TA PMP	On/Off	0.7.0.1.3	No
ETAGEC	LDO	C ETAGE	On/Off	0.7.0.1.6	No
ABTC	LDO	ABTC	On/Off	0.7.0.2.1	No
TRAP9A	LDO	P-TRAP C-211	On/Off	0.7.0.2.2	No
ALC100	LAI	ALARME PC100	Value	0.7.0.3.1	No
ALC110	LAI	ALARME PC110	Value	0.7.0.3.2	No
ALC109	LAI	ALARME PC109	Value	0.7.0.3.3	No
AC117E	LAI	ALARME C117E	Value	0.7.0.3.4	No
AC117O	LAI	ALARME C117O	Value	0.7.0.3.5	No
ALC118	LAI	ALARME C 118	Value	0.7.0.3.6	No
ALESC1	LAI	ESCALIER C 1	Value	0.7.0.3.7	No
TPC22	LAI	TEMP AMB C-117	Value	0.7.0.3.8	Std
VC22A	L2SL	VENT C2 2A	Proof	0.7.0.4.1	Std
VC22E	L2SL	EVAC C2 2A	Proof	0.7.0.4.2	No
V4E	L2SL	VENT. C2.4E	Proof	0.7.0.4.3	No
FC22A	LDI	ETAT FILTRES	Status	0.7.0.4.4	Std
FC22E	LDI	ETAT FILTRES	Status	0.7.0.4.5	No

PC120A	LDI	PORTE MEZZ. C120	Status	0.7.0.4.6 Enh
HPC22	LAI	H R AMBIANT	Value	0.7.0.5.1 No
TAAC22	LAI	TEMP AL AIR	Value	0.7.0.5.2 Std
TPAC22	LAI	T PRECHF AIR	Value	0.7.0.5.3 No
TAEC22	LAI	TEMP AIR EV	Value	0.7.0.5.4 Std
RFEC22	LAO	REGIS ECHANG	Value	0.7.0.5.5 No
SE1C22	LAO	SERP ELEC	Value	0.7.0.5.6 No
SE2C22	LAO	SERP ELEC	Value	0.7.0.5.7 No
CHUC22	LAO	HUM SYS C2 2	Value	0.7.0.5.8 No