

12

11

10

9

8

7

6

5

4

3

2

1

Millimetres

Millimetres

CONFIDENTIAL  
All information contained in this document is the property of Bronswerk Marine Inc. and is strictly confidential. This document shall not be copied, reproduced, passed on or brought to the notice of third parties without Bronswerk Marine Inc.'s written permission.

GENERAL TOLERANCES:  
TOLERANCES AND DIMENSIONS ARE IN MILLIMETERS UNLESS OTHERWISE INDICATED.  

UP TO 6	6-30	30-120	120-350	350-1000	OVER 1000
0.5	1.0	1.2	1.5	3.0	4.0

ZONE

LTR. LET.

REVISION

QA / AQ. DATE

DWN. DESS.

CKD. VER.

APPVL. APP.



**BRONSWERK**  
ONBOARD, CLIMATE, ENGINEERING

4050 PLACE DE JAVA  
BROSSARD, QUEBEC, CANADA J4Y 0C4  
TEL.: (450) 659-6571  
FAX.: (450) 659-1035

MATERIAL/MATERIEL

CUSTOMER/CLIENT  
CCG

PROJECT/PROJET  
4309

SURFACE TREATMENT/  
TRAITEMENT DE SURFACE

DWN/DESS  
CKD/VER  
APPVL/APP  
QA / AQ

S. RASHID  
A. SANCRISTOBAL  
-

TITLE/  
TITRE  
HVAC CONTROL PANEL  
CONTROL PHILOSOPHY

DWG. No./No. DESS.  
4309-160-001

REV. -  
FMT: A2

PAINT/PEINTURE

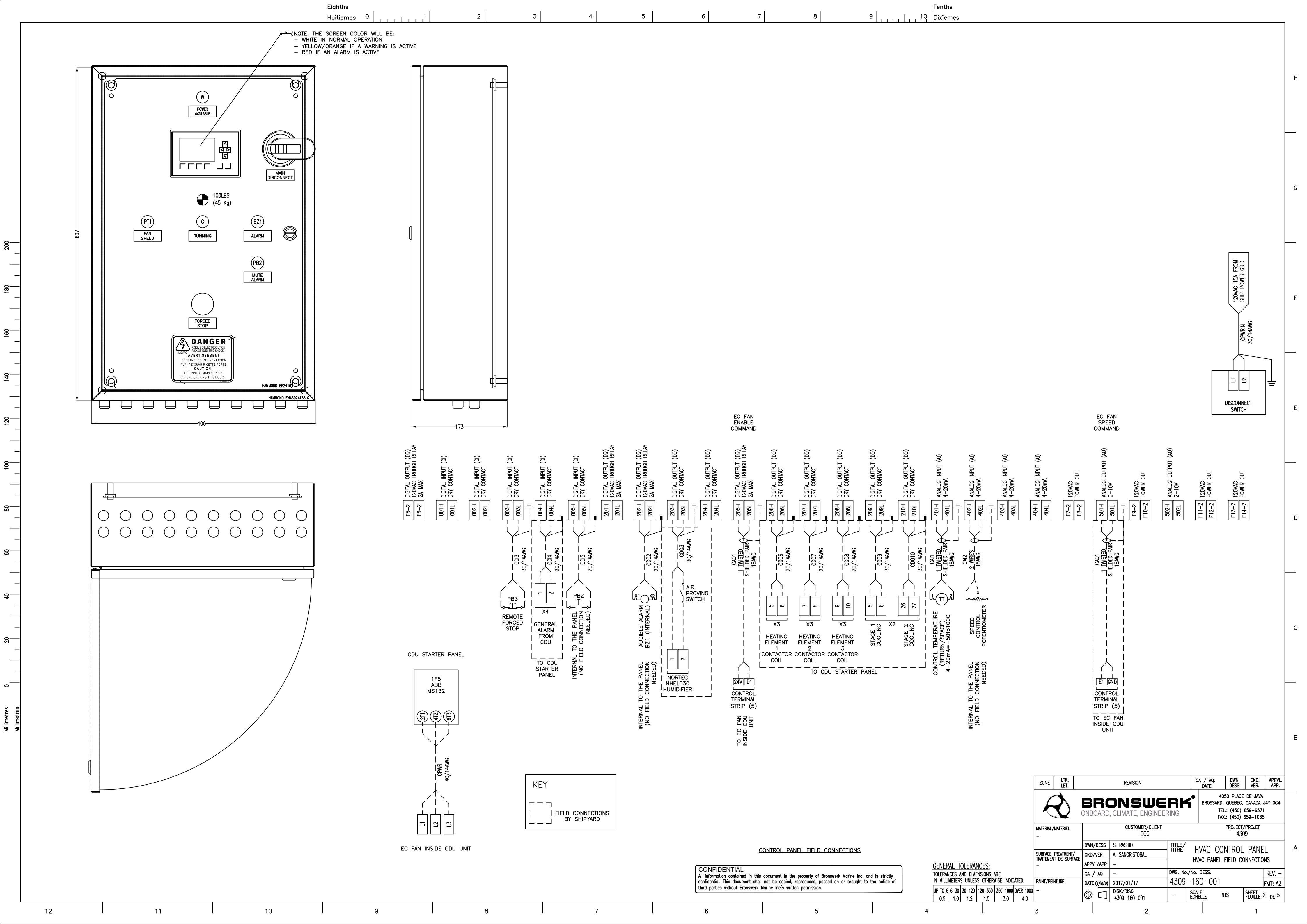
DATE (Y/M/D)  
2017/01/17

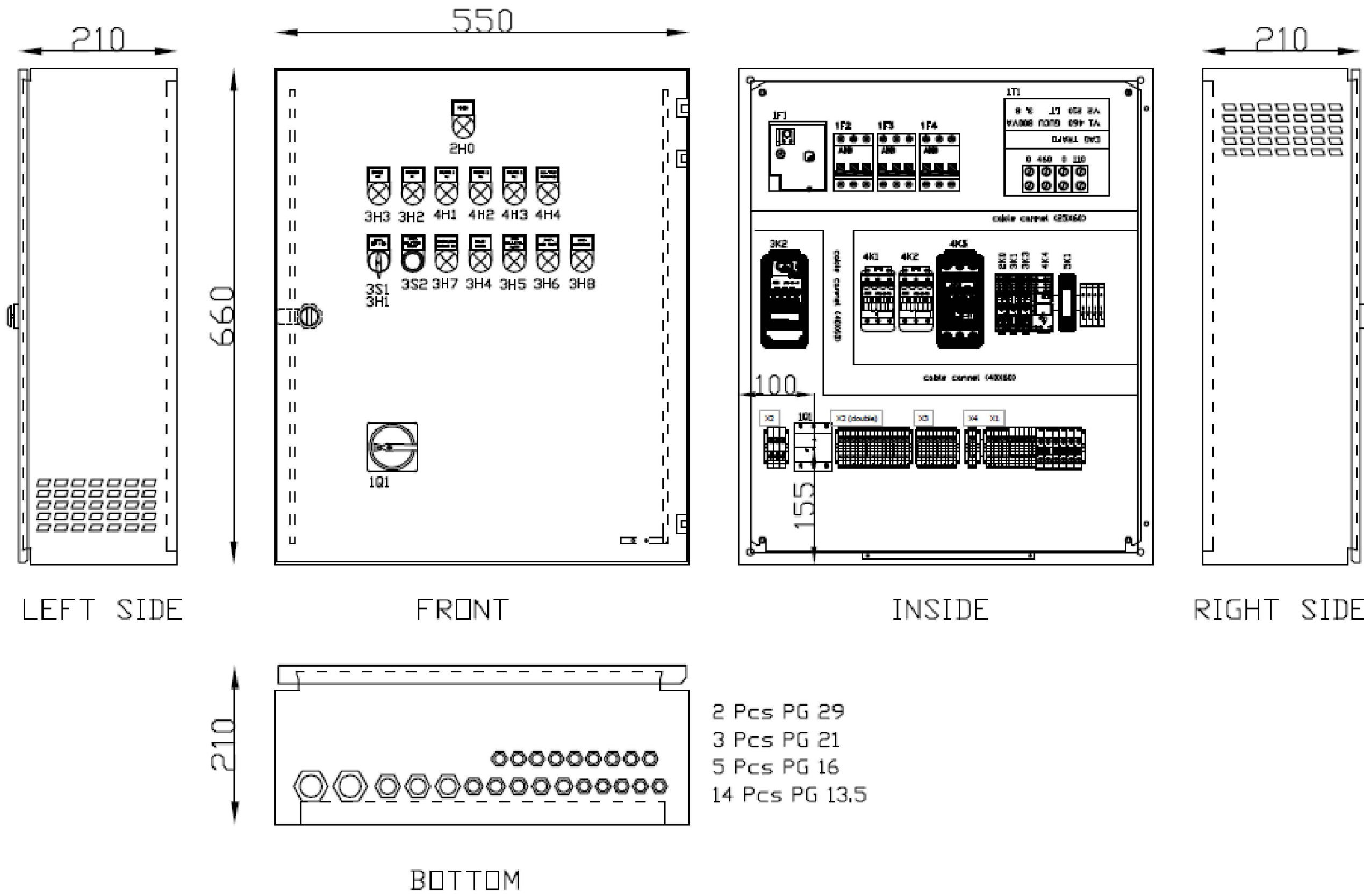
DISK/DISQ  
4309-160-001

SCALE  
ECHELLE

NTS

SHEET  
FEUILLE 1 DE 5






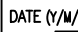
- AIR CONDENSING UNIT**
- 1Q1-MAIN SWITCH
  - 2H0-POWER SIGNAL LAMP (yellow)
  - 3S1/3H1-COMP. OFF/ON SELECTOR SWITCH WITH SIGNAL LAMP (green)
  - 3S2-COMPRESSOR OIL RESET BUTTON (red)
  - 3H2-HEATING ON SIGNAL LAMP (green)
  - 3H3-COOLING DEMAND ON SIGNAL LAMP (green)
  - 3H4-COMP. SE-B2 FAULT SIGNAL LAMP (red)
  - 3H5-COMP. OIL LEVEL ALARM SIGNAL LAMP (red)
  - 3H6-COMP. HIGH PRESS. ALARM SIGNAL LAMP (red)
  - 3H7-COMP. CRANKCASE HEATER ON SIGNAL LAMP (green)
  - 3H8-COMP. OVERLOAD SIGNAL LAMP (red)
  - 4H1-AC HEATER 1 ON SIGNAL LAMP (green)
  - 4H2-AC HEATER 2 ON SIGNAL LAMP (green)
  - 4H3-AC HEATER 3 ON SIGNAL LAMP (green)
  - 4H4-HEATER MAX TEMP. ALARM SIGNAL LAMP (red)

VOLTAGE: 3/~60 Hz 460V  
PROTECTION: IP54  
COLOR: RAL7032  
NOTE: COVER HAS STOPPER  
FOR OPEN POSITION.

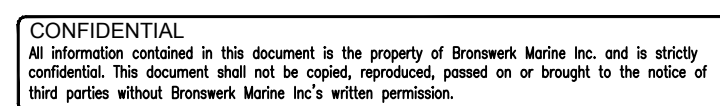
**CONFIDENTIAL**  
All information contained in this document is the property of Bronswerk Marine Inc. and is strictly confidential. This document shall not be copied, reproduced, passed on or brought to the notice of third parties without Bronswerk Marine Inc.'s written permission.

**GENERAL TOLERANCES:**  
TOLERANCES AND DIMENSIONS ARE IN MILLIMETERS UNLESS OTHERWISE INDICATED.

UP TO 6	6-30	30-120	120-350	350-1000	OVER 1000
0.5	1.0	1.2	1.5	3.0	4.0



ZONE	LTR. LET.	REVISION	QA / AQ. DATE	DWN. DESS.	CKD. VER.	APPLV. APP.
<div><div><b>BRONSWERK®</b> ONBOARD, CLIMATE, ENGINEERING</div></div>			4050 PLACE DE JAVA BROSSARD, QUEBEC, CANADA J4Y 0C4 TEL.: (450) 659-6571 FAX.: (450) 659-1035			
MATERIAL/MATERIEL		CUSTOMER/CLIENT CCG		PROJECT/PROJET 4309		
-		DWN/DESS	S. RASHID	TITLE/ TITRE		
SURFACE TREATMENT/ TRAITEMENT DE SURFACE		CKD/VER	A. SANCRISTOBAL	STARTER PANEL		
-		APPLV/APP	-	-		
PAINT/PEINTURE		QA / AQ	-	DWG. No./No. DESS.	REV. -	
00		DATE (Y/M/D)	2017/01/17	4309-160-001	FMT: A2	
		DISK/DISO	4309-160-001	-	SCALE ECHELLE	NTS
					SHEET FEUILLE	3 DE 5





**GENERAL TOLERANCES:**  
TOLERANCES AND DIMENSIONS ARE  
IN MILLIMETERS UNLESS OTHERWISE INDICATED.

UP TO 6	6-30	30-120	120-350	350-1000	OVER 1000
0.5	1.0	1.2	1.5	3.0	4.0

ZONE		LITR. LET.		REVISION				QA / AQ. DATE		DWN. DESS.		CKD. VER.		APPLV. APP.			
								<b>BRONSWERK®</b> ONBOARD, CLIMATE, ENGINEERING				4050 PLACE DE JAVA BROSSARD, QUEBEC, CANADA J4Y 0C4 TEL.: (450) 659-6571 FAX.: (450) 659-1035					
MATERIAL/MATERIEL				CUSTOMER/CLIENT CCG						PROJECT/PROJET 4309							
SURFACE TREATMENT/ TRAITEMENT DE SURFACE				DWN/DESS		S. RASHID		TITLE/ TITRE		STARTER PANEL DIMENSIONS							
				CKD/VER		A. SANCISTOBAL											
				APPLV/APP		-											
DATE / AQ				DATE (Y/M/D)		2017/01/17		DWG. No./No. DESS.		4309-160-001				REV. -			
PAINT/PEINTURE				Q / A		04								FMT: A2			
				DISK/DISO		4309-160-001		-		SCALE ECHELLE		NTS		SHEET FEUILLE		4 DE 3	

