

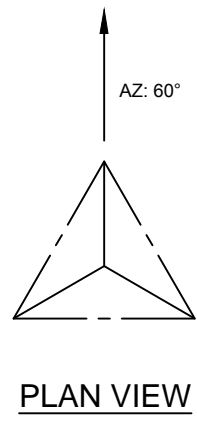
TOWER SPECIFICATIONS

Site:	ESTEVAN POINT
Latitude-NAD83	49.38345758 N
Longitude-NAD83	-126.54343656 W
Design Standard:	CSA S37-13
Design Wind:	Refer to Environment Canada Wind Analysis - July 05, 2016
Design Ice:	25mm (Class II)
Reliability:	Class I
Serviceability:	1.0
Antenna Twist/Tilt:	0.5°
Tower Type:	Guyed - Triangular in cross section
Tower Height:	61.5m (200'-0")
Tower Section Height:	3.0m (10'-0")
Paint:	N/A
Lights:	CL-865 WHITE MEDIUM INTENSITY (2 LEVELS)
Ice Guard:	N/A
Safety Climb:	Climb Ladder c/w Trylon Cougar Rail
Anticlimb:	None
Lightning Protection:	Lightning Rod to provide 45° protection for top antenna
Tx Brackets:	Tx Brackets on both non climb faces - 6 line capacity each OR Tx Brackets on either side of ladder rail - 6 line capacity each
Antenna Mounts:	Required for All initial antennas.

NOTE:

1.0 DESIGN CRITERIA FOR TRANSPORT AND ERECTION BY HELICOPTER. MAXIMUM LIFT WEIGHT NOT TO EXCEED 1400LBS. ALL WELD OR KNOCK DOWN DESIGN ACCEPTABLE.

2.0 TOWER TO BE SHIPPED BUNDLED IN LIFTS WITH WEIGHTS CLEARLY MARKED FOR HELICOPTER TRANSPORT TO SITE.



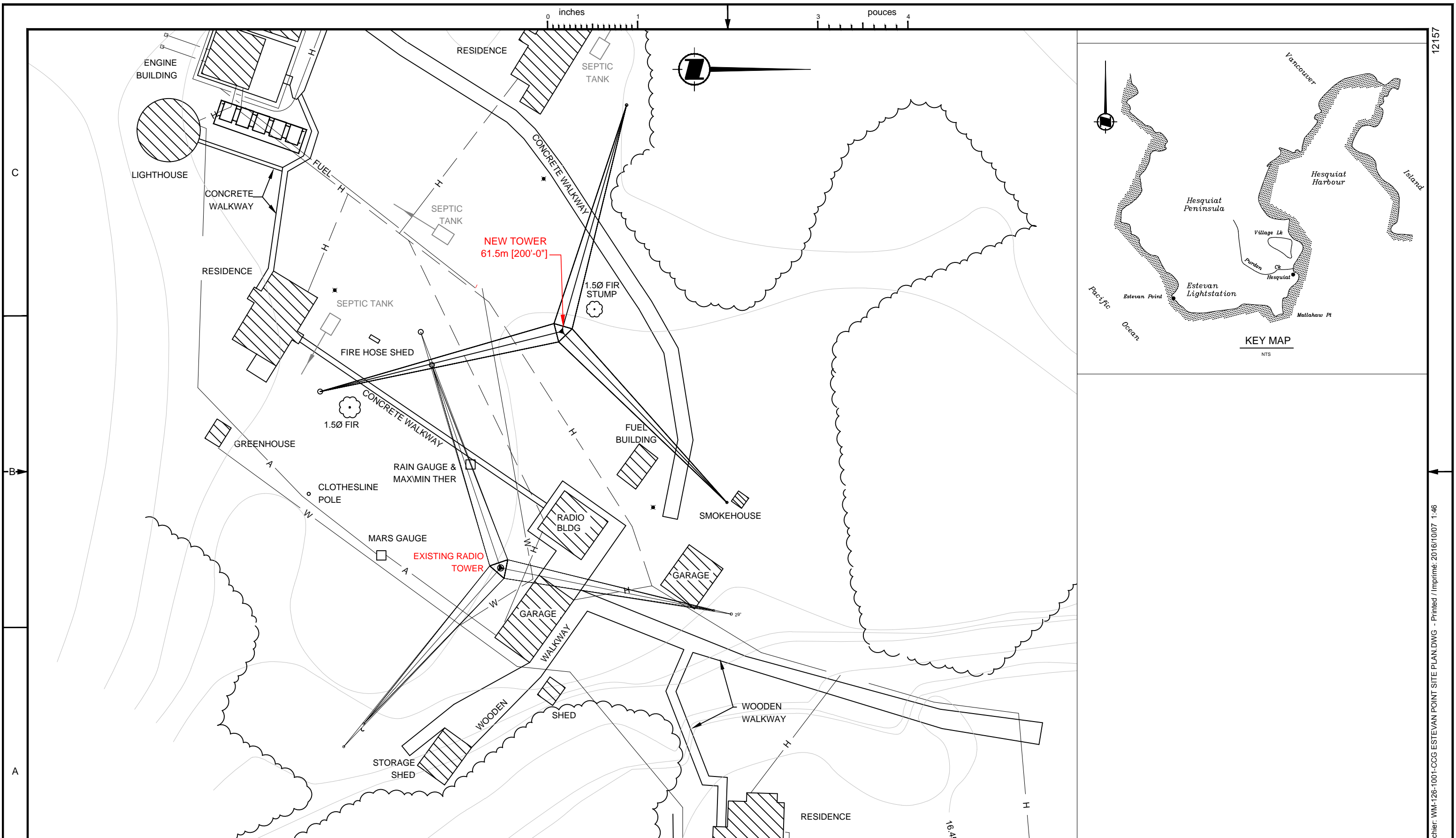
C
B
A

Fisheries and Oceans Canada
Pêches et Océans Canada
Canadian Coast Guard
Garde côtière Canadienne

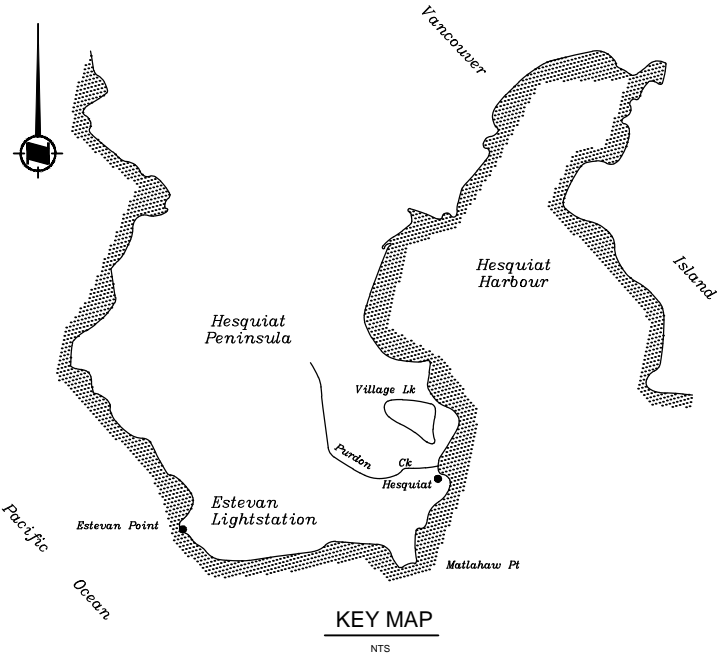
designed - conception VT date 2016/09/02	checked - vérifié date						
drawn - dessiné VT date 2016/09/30	approved - approuvé date						
CCG ref. no. - no. réf. GCC WM126-100-AL-01M	scale - échelle 1 : 200	rev		description	by par	Date	

Asset - Actif
ESTEVAN POINT, B.C.
VHF PERIPHERAL RADIO STATION

Drawing - Dessin ANTENNA LAYOUT	drawing no. - no. dessin WM-126-1000	sheet-feuille 1 of 1	rev 0
---	---	-------------------------	----------



0 1 2 3 4
inches / pouces



C

B

A

12157

File / Fichier: WM-126-1001-CCG ESTEVAN POINT SITE PLAN.DWG - Printed / Imprimé: 2016/10/07 1:46

ANSI B

Fisheries and Oceans Canada
Pêches et Océans Canada
Canadian Coast Guard
Garde côtière Canadienne

designed - conception	date	checked - vérifié	date								
VT	2016/09/23										
drawn - dessiné	date	approved - approuvé	date								
VT	2016/09/30										
CCG ref. no. - no. réf. GCC		scale - échelle		rev		description		by par		Date	
		NTS									

Asset - Actif
ESTEVAN POINT, B.C.
VHF PERIPHERAL RADIO STATION

Drawing - Dessin		SITE PLAN	
drawing no. - no. dessin	sheet-feuille	rev	
WM-126-1001	1 of 1	0	

0 1 2 3 4 5 6 7 8 9
millimeters

4

1

12157