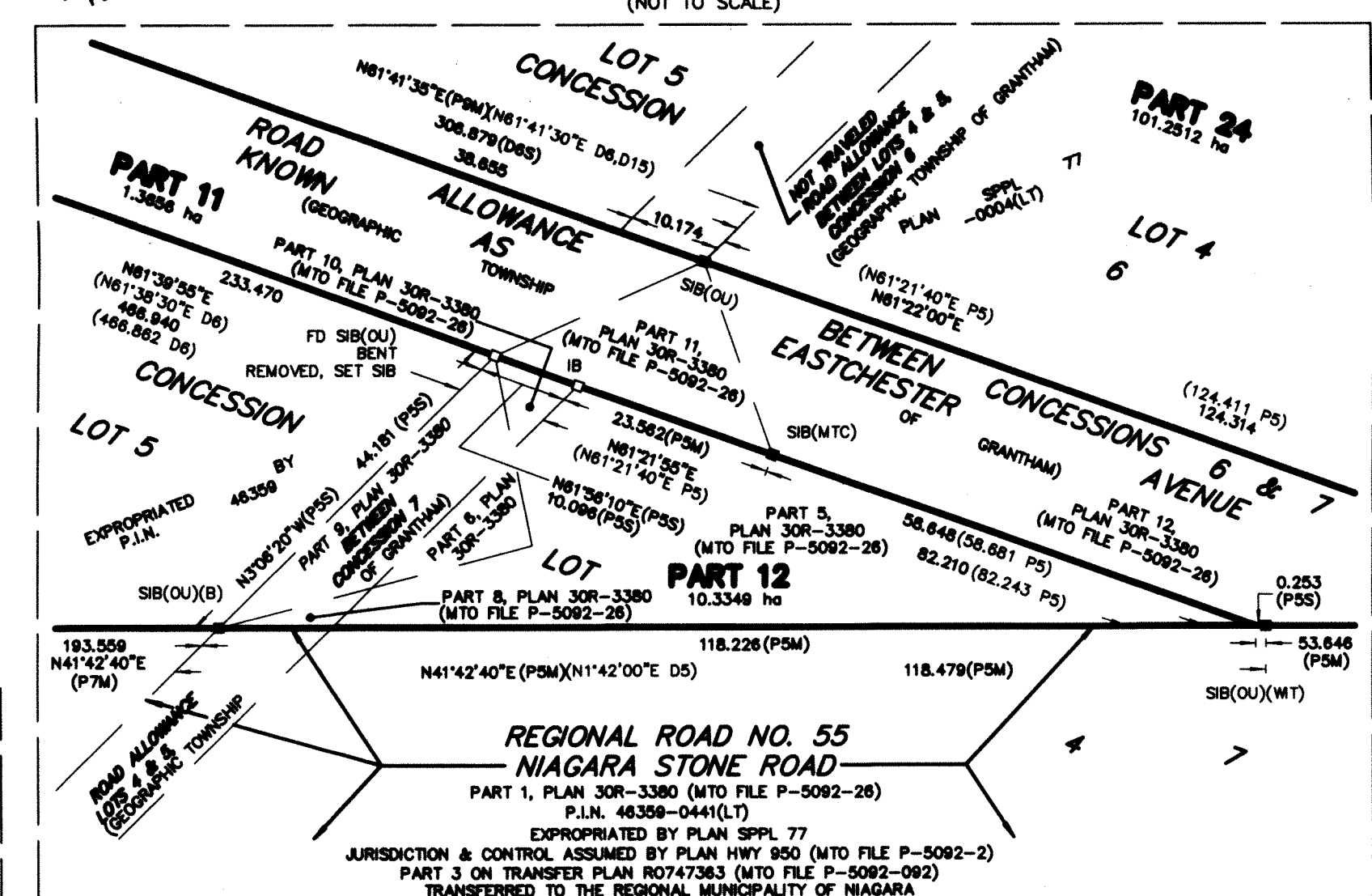


POINT ID	NORTHING	EASTING
SCP 00119653183	4785637.27	645244.60
SCP 00119653184	4785637.27	645244.60
SCP 03619910005	4784862.48	648889.77

METRIC: DISTANCES AND COORDINATES SHOWN ON THIS PLAN ARE IN METRES AND CAN BE CONVERTED TO FEET BY DIVIDING BY 0.3048



SURVEYOR'S CERTIFICATE:
(1) THIS SURVEY AND PLAN ARE CORRECT AND IN ACCORDANCE WITH THE SURVEYS ACT, THE SURVEYORS ACT AND THE LAND TITLES ACT AND THE REGULATIONS MADE UNDER THEM.
(2) THE SURVEY WAS COMPLETED ON THE 8TH DAY OF MARCH, 2016.

I REQUIRE THIS PLAN TO BE DEPOSITED UNDER THE LAND TITLES ACT		PLAN 30R- 14704	
DATE	19 April 2016	DATE	April 20, 2016
J. Andrew Smith, O.L.S.		W. Stephenson	
REPRESENTATIVE FOR LAND REGISTRATION FOR THE LAND TITLES DIVISION OF NIAGARA NORTH (N-30)			
SCHEDULE			
PART	LOT	PLAN	P.I.N.
1	PART OF ROAD ALLOWANCE BETWEEN CONCESSIONS 4 & 5, CONCESSION 4 (GEOGRAPHIC TOWNSHIP OF GRANTHAM)	CORPORATION PLAN NO. 5	PART OF 46360-0087(LT)
2	PART OF ROAD ALLOWANCE BETWEEN CONCESSIONS 4 & 5, CONCESSION 4 (GEOGRAPHIC TOWNSHIP OF GRANTHAM)	CORPORATION PLAN NO. 5	PART OF 46359-0044(LT)
3	PART OF ROAD ALLOWANCE BETWEEN CONCESSIONS 4 & 5, CONCESSION 4 (GEOGRAPHIC TOWNSHIP OF GRANTHAM)	CORPORATION PLAN NO. 5	PART OF 46359-0044(LT)
4	PART OF LOT 6	CONCESSION 6 (GEOGRAPHIC TOWNSHIP OF GRANTHAM)	PART OF 46359-0044(LT)
5	PART OF LOT 6	CONCESSION 6 (GEOGRAPHIC TOWNSHIP OF GRANTHAM)	PART OF 46359-0044(LT)
6	PART OF LOT 6	CONCESSION 6 (GEOGRAPHIC TOWNSHIP OF GRANTHAM)	PART OF 46359-0044(LT)
7	PART OF LOT 6	CONCESSION 6 (GEOGRAPHIC TOWNSHIP OF GRANTHAM)	PART OF 46359-0044(LT)
8	PART OF LOT 6	CONCESSION 6 (GEOGRAPHIC TOWNSHIP OF GRANTHAM)	PART OF 46359-0044(LT)
9	PART OF LOT 6	CONCESSION 6 (GEOGRAPHIC TOWNSHIP OF GRANTHAM)	PART OF 46359-0044(LT)
10	PART OF LOT 6	CONCESSION 6 (GEOGRAPHIC TOWNSHIP OF GRANTHAM)	PART OF 46359-0044(LT)
11	PART OF ROAD ALLOWANCE BETWEEN CONCESSIONS 6 & 7, CONCESSION 7 (GEOGRAPHIC TOWNSHIP OF GRANTHAM)	CORPORATION PLAN NO. 5	PART OF 46359-0044(LT)
12	PART OF ROAD ALLOWANCE BETWEEN CONCESSIONS 6 & 7, CONCESSION 7 (GEOGRAPHIC TOWNSHIP OF GRANTHAM)	CORPORATION PLAN NO. 5	PART OF 46359-0044(LT)
13	PART OF ROAD ALLOWANCE BETWEEN CONCESSIONS 6 & 7, CONCESSION 7 (GEOGRAPHIC TOWNSHIP OF GRANTHAM)	CORPORATION PLAN NO. 5	PART OF 46359-0044(LT)
14	PART OF ROAD ALLOWANCE BETWEEN CONCESSIONS 6 & 7, CONCESSION 7 (GEOGRAPHIC TOWNSHIP OF GRANTHAM)	CORPORATION PLAN NO. 5	PART OF 46359-0044(LT)
15	PART OF ROAD ALLOWANCE BETWEEN CONCESSIONS 6 & 7, CONCESSION 7 (GEOGRAPHIC TOWNSHIP OF GRANTHAM)	CORPORATION PLAN NO. 5	PART OF 46359-0044(LT)
16	PART OF ROAD ALLOWANCE BETWEEN CONCESSIONS 6 & 7, CONCESSION 7 (GEOGRAPHIC TOWNSHIP OF GRANTHAM)	CORPORATION PLAN NO. 5	PART OF 46359-0044(LT)
17	PART OF ROAD ALLOWANCE BETWEEN CONCESSIONS 6 & 7, CONCESSION 7 (GEOGRAPHIC TOWNSHIP OF GRANTHAM)	CORPORATION PLAN NO. 5	PART OF 46359-0044(LT)
18	PART OF ROAD ALLOWANCE BETWEEN CONCESSIONS 6 & 7, CONCESSION 7 (GEOGRAPHIC TOWNSHIP OF GRANTHAM)	CORPORATION PLAN NO. 5	PART OF 46359-0044(LT)
19	PART OF ROAD ALLOWANCE BETWEEN CONCESSIONS 6 & 7, CONCESSION 7 (GEOGRAPHIC TOWNSHIP OF GRANTHAM)	CORPORATION PLAN NO. 5	PART OF 46359-0044(LT)
20	PART OF ROAD ALLOWANCE BETWEEN CONCESSIONS 6 & 7, CONCESSION 7 (GEOGRAPHIC TOWNSHIP OF GRANTHAM)	CORPORATION PLAN NO. 5	PART OF 46359-0044(LT)
21	PART OF ROAD ALLOWANCE BETWEEN CONCESSIONS 6 & 7, CONCESSION 7 (GEOGRAPHIC TOWNSHIP OF GRANTHAM)	CORPORATION PLAN NO. 5	PART OF 46359-0044(LT)
22	PART OF ROAD ALLOWANCE BETWEEN CONCESSIONS 6 & 7, CONCESSION 7 (GEOGRAPHIC TOWNSHIP OF GRANTHAM)	CORPORATION PLAN NO. 5	PART OF 46359-0044(LT)
23	PART OF ROAD ALLOWANCE BETWEEN CONCESSIONS 6 & 7, CONCESSION 7 (GEOGRAPHIC TOWNSHIP OF GRANTHAM)	CORPORATION PLAN NO. 5	PART OF 46359-0044(LT)
24	PART OF ROAD ALLOWANCE BETWEEN CONCESSIONS 6 & 7, CONCESSION 7 (GEOGRAPHIC TOWNSHIP OF GRANTHAM)	CORPORATION PLAN NO. 5	PART OF 46359-0044(LT)
25	PART OF ROAD ALLOWANCE BETWEEN CONCESSIONS 6 & 7, CONCESSION 7 (GEOGRAPHIC TOWNSHIP OF GRANTHAM)	CORPORATION PLAN NO. 5	PART OF 46359-0044(LT)

PLAN OF SURVEY
OF ALL OF
LOTS 170 & 171
AND PART OF
LOT 172
CORPORATION PLAN NO. 5
OF ALL OF
LOTS 5 & 6
CONCESSION 6
AND PART OF
LOT 4
CONCESSION 6
AND PART OF
LOTS 4, 5 & 6
CONCESSION 7
AND ALL OF
ROAD ALLOWANCE BETWEEN
LOTS 4 & 5, CONCESSIONS 5 & 6
AND PART OF
ROAD ALLOWANCE BETWEEN
LOTS 4 & 5, CONCESSION 7
AND PART OF
ROAD ALLOWANCE BETWEEN
CONCESSIONS 4 & 5
AND PART OF
ROAD ALLOWANCE BETWEEN
CONCESSIONS 5 & 6
AND PART OF
ROAD ALLOWANCE BETWEEN
CONCESSIONS 6 & 7
(GEOGRAPHIC TOWNSHIP OF GRANTHAM)
IN THE
TOWN OF NIAGARA-ON-THE-LAKE
REGIONAL MUNICIPALITY OF NIAGARA
J. ANDREW SMITH, O.L.S.
SCALE 1:30000
(SCALE IN METRES)
BEARINGS ARE U.T.M. GRID DERIVED FROM SPECIFIED CONTROL POINTS
00119653183 AND 03619910005, UTM ZONE 17, NAD83 (CSRS) (1987.0).
FOR BEARING COMPARISONS, A ROTATION OF 312°25' COUNTER-CLOCKWISE
WAS APPLIED TO THE BEARINGS FROM P1.
FOR BEARING COMPARISONS, A ROTATION OF 92°13' COUNTER-CLOCKWISE
WAS APPLIED TO THE BEARINGS FROM P1 AND P2.
FOR BEARING COMPARISONS, A ROTATION OF 52°19' COUNTER-CLOCKWISE
WAS APPLIED TO THE BEARINGS FROM P6.
FOR BEARING COMPARISONS, A ROTATION OF 116°50' COUNTER-CLOCKWISE
WAS APPLIED TO THE BEARINGS FROM P5 AND P7.
FOR BEARING COMPARISONS, A ROTATION OF 11°30' COUNTER-CLOCKWISE
WAS APPLIED TO THE BEARINGS FROM P8.
FOR BEARING COMPARISONS, A ROTATION OF 11°30' COUNTER-CLOCKWISE
WAS APPLIED TO THE BEARINGS FROM P9 AND P10.
FOR BEARING COMPARISONS, A ROTATION OF 11°30' COUNTER-CLOCKWISE
WAS APPLIED TO THE BEARINGS FROM P11.
FOR BEARING COMPARISONS, A ROTATION OF 11°30' COUNTER-CLOCKWISE
WAS APPLIED TO THE BEARINGS FROM P12.
FOR BEARING COMPARISONS, A ROTATION OF 11°30' COUNTER-CLOCKWISE
WAS APPLIED TO THE BEARINGS FROM P13.
FOR BEARING COMPARISONS, A ROTATION OF 11°30' COUNTER-CLOCKWISE
WAS APPLIED TO THE BEARINGS FROM P14.
FOR BEARING COMPARISONS, A ROTATION OF 11°30' COUNTER-CLOCKWISE
WAS APPLIED TO THE BEARINGS FROM P15.
FOR BEARING COMPARISONS, A ROTATION OF 11°30' COUNTER-CLOCKWISE
WAS APPLIED TO THE BEARINGS FROM P16.
FOR BEARING COMPARISONS, A ROTATION OF 11°30' COUNTER-CLOCKWISE
WAS APPLIED TO THE BEARINGS FROM P17.
FOR BEARING COMPARISONS, A ROTATION OF 11°30' COUNTER-CLOCKWISE
WAS APPLIED TO THE BEARINGS FROM P18.
FOR BEARING COMPARISONS, A ROTATION OF 11°30' COUNTER-CLOCKWISE
WAS APPLIED TO THE BEARINGS FROM P19.
FOR BEARING COMPARISONS, A ROTATION OF 11°30' COUNTER-CLOCKWISE
WAS APPLIED TO THE BEARINGS FROM P20.
FOR BEARING COMPARISONS, A ROTATION OF 11°30' COUNTER-CLOCKWISE
WAS APPLIED TO THE BEARINGS FROM P21.
FOR BEARING COMPARISONS, A ROTATION OF 11°30' COUNTER-CLOCKWISE
WAS APPLIED TO THE BEARINGS FROM P22.
FOR BEARING COMPARISONS, A ROTATION OF 11°30' COUNTER-CLOCKWISE
WAS APPLIED TO THE BEARINGS FROM P23.
FOR BEARING COMPARISONS, A ROTATION OF 11°30' COUNTER-CLOCKWISE
WAS APPLIED TO THE BEARINGS FROM P24.
FOR BEARING COMPARISONS, A ROTATION OF 11°30' COUNTER-CLOCKWISE
WAS APPLIED TO THE BEARINGS FROM P25.
DISTANCES ARE GROUND AND CAN BE CONVERTED TO GRID BY MULTIPLYING
BY THE COMBINED SCALE FACTOR OF 0.99985.