



Royal Canadian Mounted Police
Gendarmerie royale du Canada

Doc. no: G.S. 1045-290
Date: 2017-01-20

Specification

Shirt, Duty, Officer

This document has 21 pages including the drawings.

This document was created in English.

The document is available in English and French.

English/Anglais
Français/French

The photograph on this page is for reference only.



Modifications

Date	Para. No's	Modifications
1998-04-20		Original Specification
2005-02-23	Entire specification Para. 2.2 - 2.4, 4.1.2 Para. 2.8 Para. 3.2 Para. 4.1.3 Para. 4.1.4 Para. 4.1.5 - 4.1.5.3 Para. 4.3.7.2, Table I Para. 4.3.3 Para. 4.3.6.2 Para. 4.3.15 Para. 4.3.18 Para. 5.1, 6.1, 6.2 Dwg. #1 Dwg. #3 Scale of Measurements	Nomenclature for sealed sample changed to viewing sample CAN/CGSB standards updated. Add badge requirement details. Design description detail added. Add specific badge details. Add colour reference. Update thread Add sizes 19, 19½, 20. Update seam type Addition of bar tacks Add note for collar buttons Cleaning instructions included. Verification Unit changed to Quality Control. Measurement location chart 'L', 'E', 'P', 'D' corrected. Neck Size measurements changed. Amended to expand the size range to include 19, 19½, 20.
2011-07-12	Para. 2.6 Para. 4.3.16 Scale of Measurements	Remove reference to DND buttons Changed the measurement for the shoulder badge to be consistent with other items. Chest, waist, hip measurements adjusted for regular fit
2012-07-24	Para. 4.1.5, 4.1.5.1, 4.1.5.2 & 4.1.5.3 Para. 4.1.2.1, 4.1.2.2, 4.1.5, 4.1.5.1, 4.1.5.2 & 4.1.5.3	Thread requirement updated as per industry standard. Added "Certification of Compliance" and Appendix A
2012-10-15	Para. 4.1.1	Specified minimum weight requirement to match specification G.S. 1045-009.
2012-11-14	Para. 4.3.11.1 and dwg. 2	Measurement was changed from 10cm to 8cm in reference to positioning of button & buttonhole on the sleeve placket
2015-05-01	Para. 1.1 Para. 1.4 Para. 2.5 Para. 2.6	Added MMR item number to paragraph. Added paragraph. Updated CGSB standard.

	<p>Para. 3.3 Para. 4.3.4.2 & 4.3.6.4 Para. 4.3.18 Para. 5</p> <p>Scale of measurements</p> <p>Appendix A</p> <p>Drawings</p>	<p>Paragraph deleted, following paragraphs renumbered.</p> <p>Paragraph deleted.</p> <p>Modified finished width measurements.</p> <p>Modified cleaning instruction label information.</p> <p>Paragraph deleted, following paragraphs renumbered.</p> <p>Modified finished chest measurements for sizes 12½-15 inclusive.</p> <p>Certificate of compliance definition and evaluation criteria modified.</p> <p>Tolerances added to drawings.</p>
2016-04-06	<p>Para. 4.1.2</p> <p>Para. 4.1.2.2</p> <p>Para. 4.1.5.1-4.1.5.3</p> <p>Para. 4.3.2</p> <p>Para. 4.3.6.2</p> <p>Para. 4.3.18</p> <p>Appendix A</p>	<p>Modified paragraph to update dimensional change to laundering standard.</p> <p>Modified weight of alternative interlining.</p> <p>Two thread paragraphs merged and third renumbered.</p> <p>Modified paragraph to update dimensional change to laundering standard.</p> <p>Modified paragraph to be consistent with drawing #4.</p> <p>Cleaning label modified with 2 acceptable options.</p> <p>Appendix removed.</p>
2017-01-20	<p>Para. 4.3.18</p>	<p>Symbol for drying corrected.</p>

RCMP VIEWING SAMPLE

A viewing sample, when available, will be supplied to the successful bidder.

This will be used for the guidance of the manufacturer in all factors not covered by this specification or referred to therein. Variation from the specification may appear in the sample in which case the specification shall govern.

It may be obtained from:

Royal Canadian Mounted Police
ATTN: Uniform and Equipment Program
(440 Coventry Road, Warehouse Building)
1200 Vanier Parkway
Ottawa, Ontario
K1A 0R2

It will be sent “prepaid” and is to be returned “prepaid”.

The viewing sample shall be returned to the RCMP in the same condition as received by the manufacturer. Lost or damaged viewing samples shall be replaced by an identical item or the RCMP shall be reimbursed for the cost of an acceptable replacement.

SPECIFICATION

SHIRT, DUTY, OFFICER

1. Definitions

- 1.1 This specification shall govern the manufacture and inspection of Shirt, Duty, Officer. The specific items covered under this specification with stock number are as follows:
- i. 4735 – Shirt, Duty, Officer, Long Sleeve / chemise de service, manches longues, officier;
 - ii. 4736-000 – Shirt, Duty, Officer, Long Sleeve, Special / chemise de service, manches longues, officier, taille spéciale;
 - iii. 4745 – Shirt, Duty, Officer, Short Sleeve / chemise de service, manches courtes, officier;
 - iv. 4746-000 – Shirt, Duty, Officer, Short Sleeve, Special / chemise de service, manches courtes, officier, taille spéciale.
- 1.2 This specification, viewing sample, drawing or other information issued in connection therewith, may only be used for specific enquiries, tenders, or orders placed on behalf of the Royal Canadian Mounted Police.
- 1.3 This specification supersedes all previous specifications for Shirt, Duty, Officer.
- 1.4 This specification has been translated into French from this original English language document.

2. Applicable Specifications

- 2.1 The following publications are applicable to this specification and to the issues in effect on the date of the invitation to tender, unless otherwise specified.
- 2.2 CAN/CGSB 4.2, Textile Test Methods; 58-2004.
- 2.3 CAN/CGSB 4.131-93, Polyester Wrap, Polyester Core.
- 2.4 CAN/CGSB-54.1-M90 Parts 1 and 2, Stitches and Seams.

- 2.5 CAN/CGSB-86.1-2003, Care Labelling of Textiles.
- 2.6 RCMP Specification, G.S.1045-009, Cloth, Polyester/Cotton Poplin.
- 2.7 RCMP Specification, G.S.1045-266, Badges Woven Item - Badge, Shoulder, Cloth, Police.

3. **General Requirements**

- 3.1 The article or material covered by this specification shall be free from material and manufacturing defects that may affect its appearance or serviceability. In all particulars not covered by this specification or contract documents, production shall be equivalent in all respects to the viewing sample.
- 3.2 **Design** - The Shirt, Duty shall be a uniform style shirt, white in colour, constructed from a poly/cotton material. The overall design shall incorporate a button front closure, two chest pockets with flap closure, collar with stand and epaulettes. It shall be designed in accordance with the attached scale of measurements and drawings which are integral parts of this specification. Long and short sleeve as well as full figure are covered in this specification.

4. **Detail Requirements**

4.1 **Components**

- 4.1.1 **Shell** - The shell material is RCMP stock item number 9135-000, Cloth, Shirting, Polyester/Cotton, white in colour and shall be purchased from the RCMP.
- 4.1.2 **Interlinings** - All interlinings shall be suitable for their intended purpose and compatible with other plies of the shirt components. The maximum allowable percentage dimensional change in the warp and weft direction shall not exceed 2% as per CAN/CGSB 4.2 No. 58-2004. All mass values apply to fabrics in treated condition.
 - 4.1.2.1 **Interlining, Collar Band** - The interlining shall be 100% cotton, either one ply with a mass of not less than 161 g/m² or two plies with a mass of 80 to 82 g/m² as used in the crease and tack process.

- 4.1.2.2 **Fusible Interlining, Front Placket, Cuffs, Flaps, Collar Fall and Shoulder Straps** - The interlining shall be 100% cotton with a mass of not less than 137 g/m² and not more than 151 g/m². It shall be dot coated with high density polyethylene adhesive, 30 mesh coating, medium finish. **Note:** If fusing equipment for the front placket only is not available and/or not compatible with automated placket equipment, an interlining of 100% Dacron with a mass of 90 g/m² may be used.
- 4.1.3 **Shoulder Badges** - The RCMP stock item number 2135-108, Badge, Shoulder, Police shall be purchased from the RCMP.
- 4.1.4 **Buttons** - The buttons shall be a four-hole urea formaldehyde thermosetting resin, 10mm and 13mm. The colour shall match the shell material.
- 4.1.5 **Thread** -
- 4.1.5.1 **Seams & Buttonholes** - The thread for the seams and buttonholes shall be polyester wrap, polyester core, Tex 24, Class B, Type 1 of matching colour, meeting CAN/CGSB 4.131-93.
- 4.1.5.2 **Buttons** - Shall be polyester wrap, polyester core, Tex 40, Class B, Type 1 of matching colour, meeting CAN/CGSB 4.131-93.
- 4.2 **Size and Dimensions** - Shirts to this specification shall be supplied in the sizes specified by the R.C.M.P. and to the dimensions given in the scale of measurements and drawings, which form part of this specification.
- 4.3 **Construction**
- 4.3.1 **Cutting** - All component parts of the shirt shall be cut from the same piece of material and assembled to ensure uniformity of shade. The warp shall run in the same direction (up and down the garment) on all parts except the collar, yoke and cuffs.
- 4.3.2 **Fusing** - The fused interlining shall show no separation between the lamination after 40 launderings, when tested in accordance with CAN/CGSB 4.2 No. 58-2004.
- 4.3.3 **Stitching** - The side seams, sleeve and armhole seams shall be sewn with a safety stitch Type 516. All other seaming and stitching shall be lock stitched Type 301 or

chain stitched Type 401. There shall be not less than four nor more than five stitches per centimetre. The beginning and ending of all seams shall be securely backstitched unless secured by other sewing. All loose thread ends shall be trimmed off. Seams shall be smooth and even. Care shall be taken to minimize unsightly gathering and puckering.

4.3.4 **Fronts**

4.3.4.1 The left front shall have a 3.4 cm wide placket, top fused or interlined with material specified in para 4.1.2.2 and top stitched 6mm gauge. The placket shall be cut-on with the raw edge of the facing tucked into the pleat. If Dacron interlining is being used, the placket shall be pressed flat for neat appearance.

4.3.4.2 The right front shall be plain, with a cut-on facing of 2.5 cm finished width. The raw edge shall be serged, turned inward and stitched 1.5 mm gauge or it may be selvedge. The facing shall be folded to the inside and pressed flat, forming a straight edge.

4.3.4.3 Seven buttonholes, not including the collar buttonhole, commercial shirt type, using the threads specified in paragraph 4.1.5 and 4.1.5.2, with not less than 11 stitches per centimetre, shall be vertically centered on the placket with the center of the holes being 8 cm apart. The centre of the top buttonhole shall be 8 cm below the horizontal collar buttonhole. All buttonholes shall be sized to properly fit the 13 mm button, specified in paragraph 4.1.4.

4.3.4.4 Seven plus one spare button, not counting the collar button, specified in paragraph 4.1.4, shall be positioned on the right front, spaced to effect proper closure of the shirt. The spare button shall be placed 8cm below the bottom button. All shirt buttons shall be sewn with the thread specified in paragraph 4.1.5.3. The button sewer shall have a cycle of not less than 16 stitches per button, with the thread locked into the place at completion.

Note: Shirts with buttons sewn on a machine that is off cycle and not locking the thread on completion are not acceptable.

4.3.5 **Pockets, Pleated Military Type with Flaps**

4.3.5.1 The pockets shall be folded in half and stitched 2.5 cm from the folded edge.

4.3.5.2 The folded portion shall be pressed flat to form a 2.5 cm box pleat.

- 4.3.5.3 The top edge of the pockets shall be folded in, the raw edge folded under and stitched to form a 2.5 cm hem.
- 4.3.5.4 The side and bottom edges shall be creased and sewn to the front 1.5mm gauge.
- 4.3.5.5 The top corners shall be sewn with a triangle stitch pattern.
- 4.3.5.6 The left breast pocket shall have a pencil compartment 4 cm wide and 11 cm deep, made from a single ply of shell material with the hem across the top 2 to 2.5 cm in depth and stitched 1.5 mm gauge to the body of the shirt along the outer edges only.
- 4.3.5.7 A 13 mm button shall be sewn on the center of the box pleat to effect correct closure.

4.3.6 **Pocket Flaps**

- 4.3.6.1 The flaps shall be made of one piece of material folded to form two plies and top fused with material specified in paragraph 4.1.2.2.
- 4.3.6.2 The side, corner and bottom edges shall be creased and double top stitched 1.5mm and 6mm gauge. The top corners shall be bar tacked or backstitched.
- 4.3.6.3 Centre a vertical buttonhole to fit a 13 mm button 1.5 cm above the bottom edge of the flap.
- 4.3.6.4 Each flap shall be stitched to the shirt front 1.5 mm and 6 mm gauge in a continuous operation. The left flap shall have an opening of 4 cm between the flap and shirt front that shall correspond with the position of the pencil compartment.

4.3.7 **Position of Pockets and Flaps**

- 4.3.7.1 The flap shall be positioned in relation to the pocket, as shown in Drawing No. 4.
- 4.3.7.2 The pocket and flap shall be positioned on the front as shown in Drawing No. 2 and Table I:

TABLE I**Position of Pockets in Relation to Front Edge**
Dimension A in Drawing No. 2

SIZE	CM
12½ - 13½	5.0
14 - 14½	5.7
15 - 15½	6.4
16 - 16½	7.0
17 - 17½	7.6
18 - 18½	8.3
19 - 19½	9.0
20	9.6
TOLERANCES ± 3 mm	

- 4.3.8 **Back Panel** - The completed back panel shall have a two ply yoke with a finished depth of 8 cm for all sizes and a centred box pleat 3.4 cm wide, on the top of the back below the yoke. The yoke shall be attached with the seam inside and top stitched 1.5 mm gauge.
- 4.3.9 **Joining Shoulders** - Insert the fronts between the yoke, seams inside and top stitch 1.5 mm gauge.
- 4.3.10 **Shoulder Straps** - The straps, dimensioned as per Drawing No. 2, shall be made of two pieces of shell material, top fused with material specified in para. 4.1.2.2 and double top stitched 1.5 mm and 6 mm gauge. They may be seamed, turned and stitched or creased and stitched. A buttonhole to fit a 13 mm button shall be centered 2.1 cm from the pointed end. The straps shall be sewn into the armhole seam, centered at the sleevehead, parallel with the shoulder. The length shall be as required and shoulder width per size to fit the button positioned 3.2 cm from the collar seam and in line with the buttonhole of the strap.
- 4.3.11 **Sleeves**
- 4.3.11.1 **Long Sleeves** - The sleeves shall be made from one piece of shell material with a placket opening as per Drawing No. 2 or with automated equipment. The placket shall be 2.5 cm wide with a finished outside length of 18 cm. There shall be a 10

mm matching button with corresponding buttonhole in the center of placket, 8 cm from cuff seam. The bottom of the sleeves shall be cut wide enough to incorporate a 5 to 6 mm deep pleat at center of sleeve, when setting the cuff. There shall be no other pleats nor puckering when cuffs are set.

- 4.3.11.2 **Short Sleeves** - The short sleeves shall be made from one piece of shell material finished with a 3.2 cm gutter hem as per Drawing No. 2 or with automated equipment. The gutter hem shall be top-stitched 6mm gauge.
- 4.3.12 **Joining, Sleeve Setting, Underarm and Side Seams** - The join shall be by means of a seamed and serged safety stitch specified in para. 4.3.3.
- 4.3.13 **Bottom Edge** - Hem the bottom edge of the back and front by turning in the raw edge, folding this edge under and stitching at a 5 mm gauge.
- 4.3.14 **Long Sleeve Cuff** - The cuffs shall be made from two plies of shell material, top fused with interlining specified in para. 4.1.2.2, double top stitched 1.5 mm and 6 mm gauge and one buttonhole and two buttons for horizontal adjustment. The buttonhole and buttons shall be centred on the cuff as per Drawing No. 2. When the first button is closed, the placket shall be straight and the cuff circumference shall measure as required for the various sizes stated in the scale of measurements.
- 4.3.15 **Collar** - The collar shall be two pieces, fall and band, made from two plies of shell material and interlined with material specified in paragraphs 4.1.2.1 and 4.1.2.2 respectively. Construction and dimensions shall be as per Drawing No. 3 and scale of measurements. Compatible automated equipment is acceptable, including collar setting. The fall shall be top fused with two plies of interfacing in two separate operations. The second ply of interlining shall be cut back on the edge to just inside the seam, forming a smooth and flat edge when turned. The collar fall shall be seamed, the corners clipped, turned and top stitched 6mm gauge. The interlined band shall be attached to the fall, and the completed collar assembly to the shirt by stitching 1.5 mm gauge around the band. A button and buttonhole shall be centred on the collar band in line with the buttons and buttonholes of the front panels. The distance between the two shall be as required for the collar size, reference scale of measurements and Drawing No. 1, drawing location A. The points shall be buttoned to the front with a 10 mm matching button and suitable buttonhole.

Note: Care shall be taken when placing the collar buttons to ensure that the shirt remains flat and no pulling occurs.

4.3.16 **Shoulder Badges** - The R.C.M.P. shoulder badge specified in para. 4.1.3 shall be centred on the sleeve head 2 cm below the seam and attached with one narrow row of stitching all around.

4.3.17 **Marking** - Each shirt shall be legibly and permanently marked on the inside of the collar band with the following information in English and French:

1. Letters: RCMP-GRC
2. Collar Size, Figure Designation, and Sleeve Length* (Ex. 17 Regular 32/33)
3. RCMP stock number - reference contract documents. (Ex. 4735 000)
4. Your manufacturer identification (Company name or number)
5. Date of manufacture, in numeric format year/month (Ex. 2001/11)






***Note:** Sleeve Length marking shall indicate the range that the sleeve length size accommodates (eg: sleeve length of 33" shall be labeled as 32/33).

4.3.18 **Cleaning Instructions Label** - Each Shirt, Duty, Officer shall have a durable care label attached to the inside back beneath the marking label with instructions in both English and French: Two options of labels are acceptable as per the tables below.

Option A

1	Machine wash - warm (40°C)	Laver à la machine - eau tiède (40°C)
2	Do Not use fabric softener or chlorine bleach	Ne pas utiliser d'agent adoucissant ou d'agent de blanchiment
3	Tumble dry- low (Do Not use dryer sheets)	Séchage par culbutage – à basse température (Ne pas utiliser d'assouplissant en feuilles)
4	Steam Iron - medium temperature	Repassage à vapeur - à modérée température
5	Dry clean - normal cycle	Nettoyage à sec - cycle normal

Option B

				
Do Not use fabric softener		(Do Not use dryer sheets)		
Ne pas utiliser d'agent adoucissant		(Ne pas utiliser d'assouplissant en feuilles)		

- 4.3.19 All shirts shall be folded in accordance with good commercial practice, with no pins being used.

5. **Quality Assurance Provisions**

- 5.1 **Responsibility for Inspection** - Unless otherwise stipulated in the contract, it is the prime contractor's responsibility to satisfy the RCMP, Uniform and Equipment Program that the material and services being supplied conform to this specification. This may be accomplished by performing the tests specified in this specification or by demonstrating to the satisfaction of the RCMP, Uniform and Equipment Program that conformity to this specification of manufacturing processes is assured. The contractor may use any commercial testing establishment acceptable to the RCMP, Uniform and Equipment Program.
- 5.2 The RCMP, Uniform and Equipment Program reserves the right to perform any inspection considered necessary to ensure the material and services conform to the specified requirements. For the purpose of inspection, a portion of each delivery not exceeding two percent or two out of any number delivered under 100 may be put to tests that could destroy the articles. If found to be inferior or not in accordance with this specification, all articles so destroyed shall be replaced by others of proper quality and pattern at the expense of the contractor. The entire delivery may also be rejected if it is found that articles previously rejected due to non-repairable defects are redelivered for inspection.
- 5.3 The contractor will be promptly notified when any articles are not accepted and such articles will be returned at the contractor's risk and expense.

6. **Methods of Measuring**

(Refer to the Scale of Measurements and Drawing No. 1).

- 6.1 **Neck Closure** - The neck closure shall be the distance measured parallel to the neck line from the centre of the collar button to the outer edge of the buttonhole. (A).
- 6.2 **Chest** - The chest shall be twice the distance across the buttoned shirt, measured 2cm below the lowest point of the armholes. (B).
- 6.3 **Waist** - The waist shall be twice the distance across the buttoned shirt, at a point 18 to 20cm below the lowest points of the armholes. (C).
- 6.4 **Hips** - The hips shall be twice the distance across the buttoned shirt, measured at the bottom of the side seams. (D).
- 6.5 **Back Length** - The length shall be the distance measured from the base of the collar at centre back of the neck to the bottom of the shirt. The front and back of the shirt shall finish even. (E).
- 6.6 **Side Length** - The distance measured from the lowest point of the arm hole to the bottom edge. (F).
- 6.7 **Back Width** - The back width shall be the distance across the back of the shirt measured at the bottom of the yoke. (G).
- 6.8 **Long Sleeve Length** - The long sleeve length shall be the distance from the centre of the collar band to the end of the cuff. (H).
- 6.9 **Cuff Circumference** - The cuff circumference shall be the distance from the centre of the button to the outer edge of the buttonhole. (J).
- 6.10 **Sleeve Circumference at Elbow** - The sleeve circumference shall be twice the distance measured across the sleeve at the midpoint between the shoulder and the end of the cuff. (K).
- 6.11 **Short Sleeve Overarm Length** - The short sleeve overarm length shall be the distance from the sleevehead to the end of the gutter hem. (L).
- 6.12 **Short Sleeve Underarm Length** - The short sleeve underarm length shall be the distance from the lowest point of the armhole to the end of the gutter hem. (M).

- 6.13 **Short Sleeve Cuff Circumference** - The short sleeve cuff circumference shall be twice the distance measured along the gutter hem. (N).
- 6.14 **Depth of Yoke** - The depth of yoke shall be the distance measured from the collar seam at the centre back to the bottom of the yoke. (P).
- 6.15 **Armhole Circumference** - The armhole circumference shall be the distance around the armhole, measured along the curvature of the seam. (Q).

SCALE OF MEASUREMENTS - SHIRT, DUTY, OFFICER, REGULAR

Measurements	CM	CM	CM	CM	CM	CM	CM	CM	CM	CM	CM	CM	CM	CM	CM	CM	Tolerance CM	Drawing Location		
Collar Size *	12½	13	13½	14	14½	15	15½	16	16½	17	17½	18	18½	19	19½	20				
Collar Band	33	34	35	36.5	38	39	40.5	42	43	44	45.5	47	48	49	50	51	0.3	A		
Chest Finished	97.5	100	102.5	105	107.5	110	115	120	125	130	135	140	145	150	155	160	1	B		
Waist Finished	92.5	95	97.5	100	102.5	105	110	115	120	125	130	135	140	145	150	155	1	C		
Hip Finished	94.5	97	99.5	102	104.5	107	112	117	122	127	132	137	142	147	152	157	1	D		
Back Length	76	78	78	80	80	82	82	84	84	86	86	88	88	90	90	92	1	E		
Side Length	36	38	38	40	40	42	42	44	44	46	46	48	48	50	50	52	1	F		
Back Width	39.5	41	42.5	44	45	47	48	49	50	51	52	53	54	55	56	57	0.5	G		
Long Sleeve	Sleeve Length*	31	31	31	31	31	31	31	31	31	31	33	33	33	33	33	33	1	H	
		33	33	33	33	33	33	33	33	33	33	33	35	35	35	35	35	35	1	H
		35	35	35	35	35	35	35	35	35	35	35	37	37	37	37	37	37	1	H
								37	37	37	37								1	H
	Cuff Circumference	21	22	22	23	23	24	24	25	25	26	26	27	27	28	28	29	0.5	J	
	Elbow Circumference	35	36.5	36.5	38	38	39.5	39.5	41	41	42.5	42.5	44	44	45.5	45.5	47	0.5	K	
Short Sleeve	Overarm Sleeve Length	22.5	23	23	23.5	23.5	24	24	24.5	24.5	25	25	25.5	25.5	26	26	26.5	0.5	L	
	Underarm Sleeve Length	12	12.5	12.5	13	13	13.5	13.5	14	14	14.5	14.5	15	15	15.5	15.5	16	0.5	M	
	Cuff Circumference	37	38	38	39	39	40	40	41	41	42	42	43	43	44	44	45	1	N	
Depth of Yoke	8	8	8	8	8	8	8	8	8	8	8	8	8	8	8	8	0.5	P		
Armhole Circumference	48	50	50	52	52	54	54	56	56	58	58	60	60	62	62	64	1	Q		
Tie Gap	2	2	2	2	2	2	2	2	2	2	2	2	2	2	2	2	0.3			

***NOTE:** Collar size and sleeve length (long sleeve) are in imperial for easy identification of shirt sizes. Sleeve length marking shall indicate the range that the sleeve length size accommodates (eg. Sleeve length of 33" shall be labelled as 32/33)

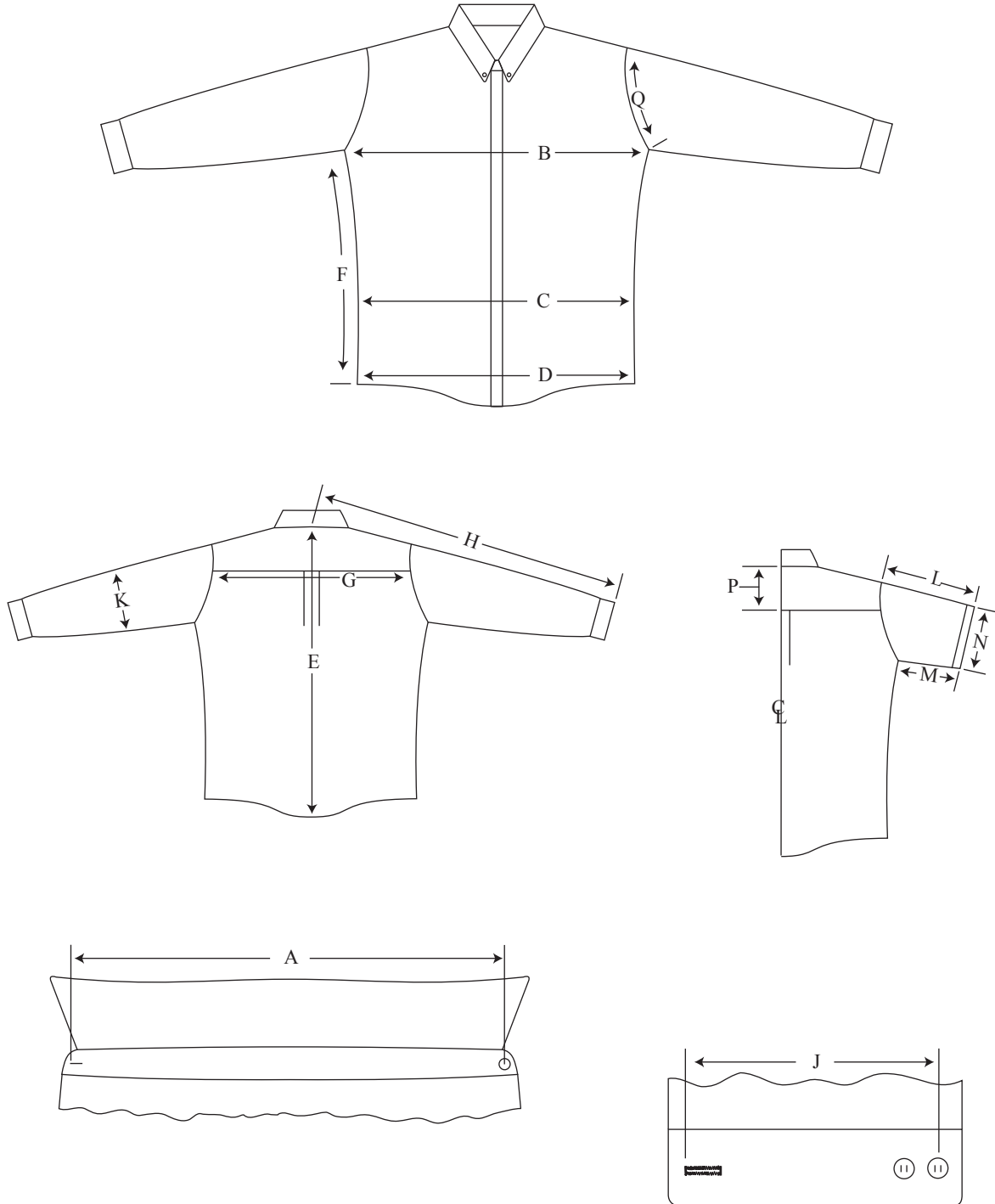
SCALE OF MEASUREMENTS - SHIRT, DUTY, FULL FIGURE

Measurements	CM	CM	CM	CM	CM	CM	CM	CM	CM	Tolerance CM	Drawing Location	
Collar Size *	16	16½	17	17½	18	18½	19	19½	20			
Collar Band	42	43	44	45.5	47	48	49	50	51	0.3	A	
Chest Finished	130	135	140	145	150	155	160	165	170	1	B	
Waist Finished	123	128	133	138	143	148	153	158	163	1	C	
Hip Finished	127	132	137	142	147	152	157	162	167	1	D	
Back Length	84	84	86	86	88	88	90	90	92	1	E	
Side Length	46	46	48	48	50	50	52	52	54	1	F	
Back Width	50	51	52	53	54	55	56	57	58	0.5	G	
Long Sleeve	Sleeve Length*	33	33	33	33	33	33	33	33	33	1	H
		35	35	35	35	35	35	35	35	35	1	H
		37	37	37	37	37	37	37	37	37	1	H
	Cuff Circumference	25	25	26	26	27	27	28	28	29	0.5	J
	Elbow Circumference	41	41	42.5	42.5	44	44	45.5	45.5	47	0.5	K
Short Sleeve	Overarm Sleeve Length	24.5	24.5	25	25	25.5	25.5	26	26	26.5	0.5	L
	Underarm Sleeve Length	14	14	14.5	14.5	15	15	15.5	15.5	16	0.5	M
	Cuff Circumference	41	41	42	42	43	43	44	44	45	1	N
Depth of Yoke	8	8	8	8	8	8	8	8	8	0.5	P	
Armhole Circumference	58	58	60	60	62	62	64	64	66	1	Q	
Tie Gap	2	2	2	2	2	2	2	2	2	0.3		

***NOTE:** Collar size and sleeve length (long sleeve) are in imperial for easy identification of shirt sizes. Sleeve length marking shall indicate the range that the sleeve length size accommodates (eg. Sleeve length of 33" shall be labelled as 32/33)

MEASUREMENT LOCATION CHART

Dwg. 1

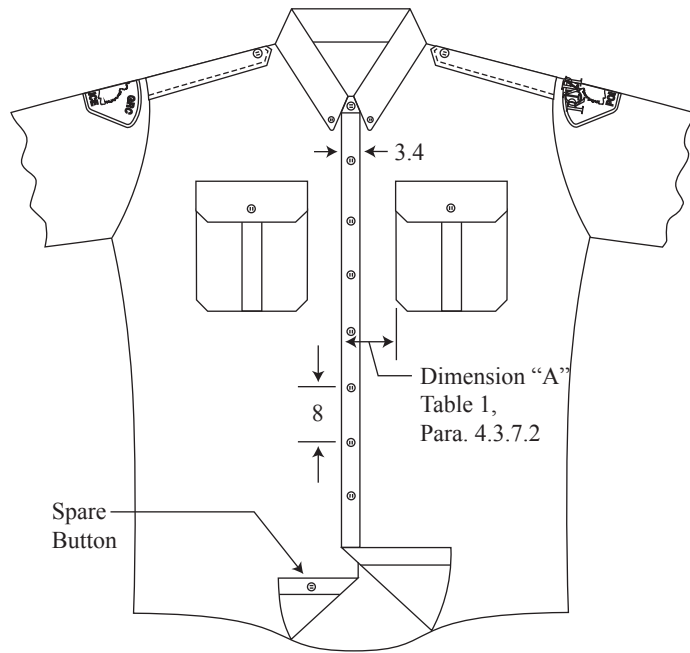


NOT TO SCALE

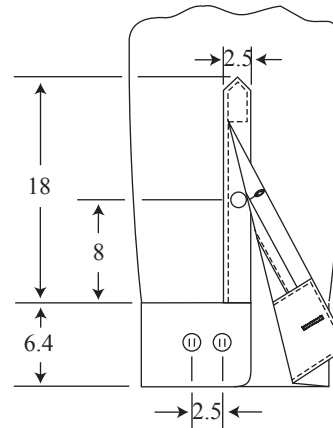
SHIRTS, DUTY, OFFICER

G.S.1045-290

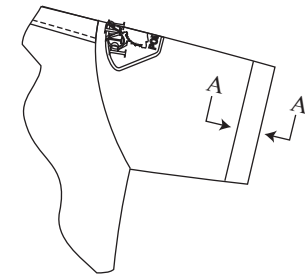
Dwg. 2



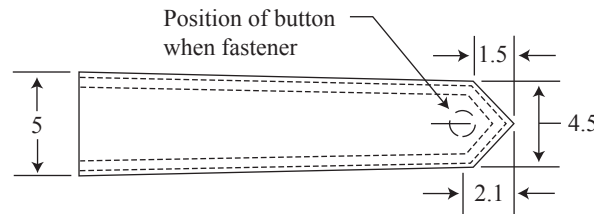
Front View



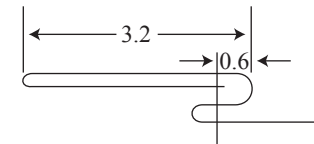
Cuff Placket Detail
(Long sleeve only)



Gutter Hem
(Short Sleeve only)



Shoulder Strap
(Length as required)



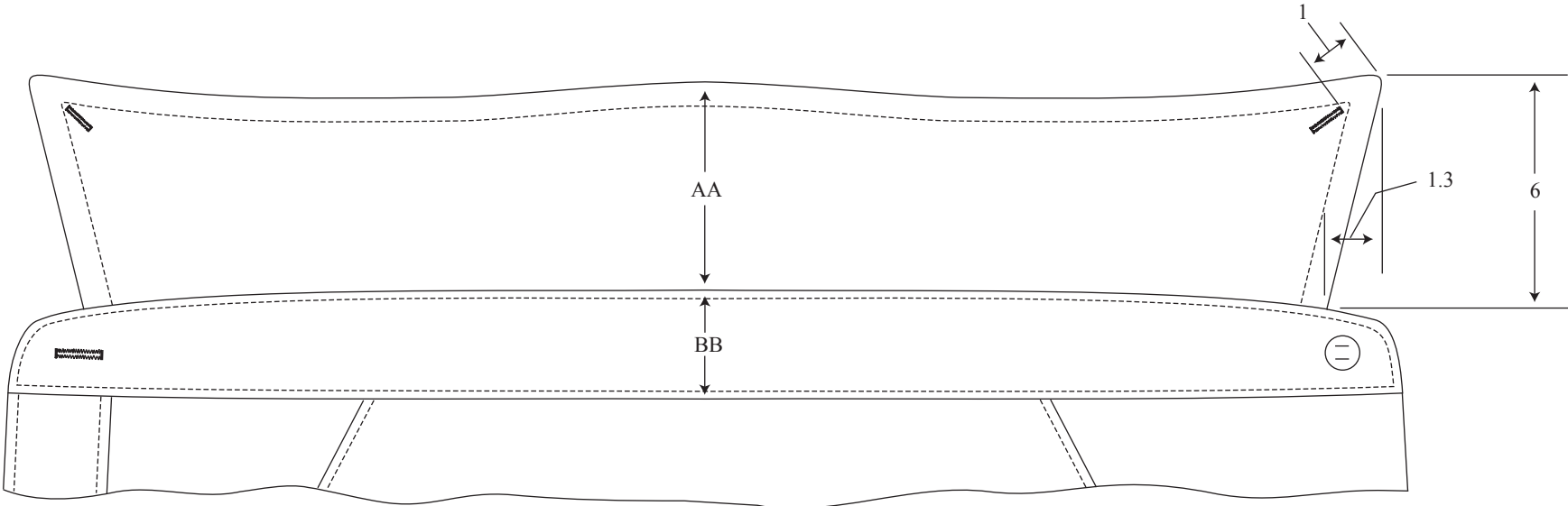
Section A-A

All Measurements in Centimeters

Unless otherwise stated all measurements are subject to ± 0.5 cm tolerances

NOT TO SCALE

Dwg. 3



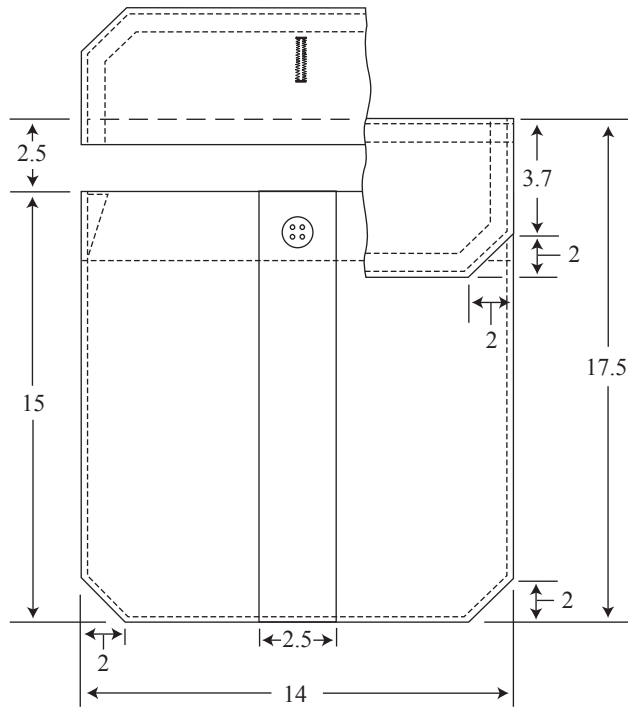
Under Collar

Neck Size	AA	BB
12½ - 20	4.5	3.5

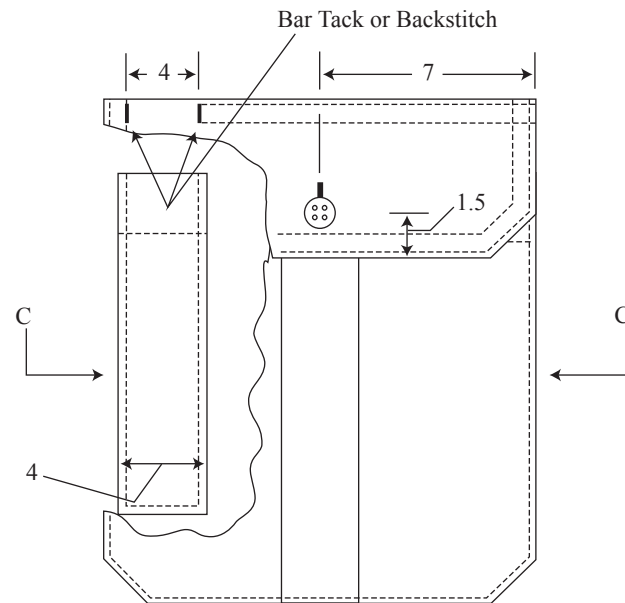
All Measurements in Centimeters
Unless otherwise stated all measurements are subject to ± 0.5 cm tolerances
NOT TO SCALE

POCKET DETAIL

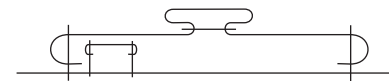
Dwg. 4



Right Pocket Detail



Left Pocket Detail
(showing Pencil Compartment)



Section C - C Pencil Pocket

All Measurements in Centimeters

Unless otherwise stated all measurements are subject to ± 0.5 cm tolerances

NOT TO SCALE