



## RETURN BIDS TO:

## RETOURNER LES SOUMISSIONS À:

Bid Receiving - PWGSC / Réception des soumissions  
- TPSGC

11 Laurier St./11 rue Laurier

Place du Portage, Phase III

Core 0B2 / Noyau 0B2

Gatineau, Québec K1A 0S5

## SOLICITATION AMENDMENT MODIFICATION DE L'INVITATION

The referenced document is hereby revised; unless otherwise indicated, all other terms and conditions of the Solicitation remain the same.

Ce document est par la présente révisé; sauf indication contraire, les modalités de l'invitation demeurent les mêmes.

### Comments - Commentaires

### Vendor/Firm Name and Address

Raison sociale et adresse du  
fournisseur/de l'entrepreneur

### Issuing Office - Bureau de distribution

Construction Services Division/Division des services de  
construction

11 Laurier St./11 Rue Laurier

3C2, Place du Portage

Phase III

Gatineau, Québec K1A 0S5

<b>Title - Sujet</b> IAR- Bay 2 -Anechoic chamber refit	
<b>Solicitation No. - N° de l'invitation</b> 9F030-160614/B	<b>Amendment No. - N° modif.</b> 003
<b>Client Reference No. - N° de référence du client</b> 20160614	<b>Date</b> 2017-03-24
<b>GETS Reference No. - N° de référence de SEAG</b> PW-\$\$\$FG-362-72673	
<b>File No. - N° de dossier</b> fg362.9F030-160614	<b>CCC No./N° CCC - FMS No./N° VME</b>
<b>Solicitation Closes - L'invitation prend fin</b> <b>at - à 02:00 PM</b> <b>on - le 2017-04-04</b>	<b>Time Zone</b> <b>Fuseau horaire</b> Eastern Daylight Saving Time EDT
<b>F.O.B. - F.A.B.</b> <b>Plant-Usine:</b> <input type="checkbox"/> <b>Destination:</b> <input type="checkbox"/> <b>Other-Autre:</b> <input type="checkbox"/>	
<b>Address Enquiries to: - Adresser toutes questions à:</b> Fall, Moctar	<b>Buyer Id - Id de l'acheteur</b> fg362
<b>Telephone No. - N° de téléphone</b> (873) 469-4642 ( )	<b>FAX No. - N° de FAX</b> ( ) -
<b>Destination - of Goods, Services, and Construction:</b> <b>Destination - des biens, services et construction:</b>	

Instructions: See Herein

Instructions: Voir aux présentes

<b>Delivery Required - Livraison exigée</b>	<b>Delivery Offered - Livraison proposée</b>
<b>Vendor/Firm Name and Address</b> <b>Raison sociale et adresse du fournisseur/de l'entrepreneur</b>	
<b>Telephone No. - N° de téléphone</b> <b>Facsimile No. - N° de télécopieur</b>	
<b>Name and title of person authorized to sign on behalf of Vendor/Firm</b> <b>(type or print)</b> <b>Nom et titre de la personne autorisée à signer au nom du fournisseur/</b> <b>de l'entrepreneur (taper ou écrire en caractères d'imprimerie)</b>	
<b>Signature</b>	<b>Date</b>

Solicitation No. - N° de l'invitation

9F030-160614/B

Client Ref. No. - N° de réf. du client

9F030-160614/B

Amd. No. - N° de la modif.

003

File No. - N° du dossier

fg362 9F030-160614/B

Buyer ID - Id de l'acheteur

fg362

Project No-No du Projet

CSA 15- G6b CSA

---

Amendment 003 is raised to:

1. Extend the closing date until April 4<sup>th</sup> 2017 @ 2:00 pm EDT
2. Delete SI03 in its entirety and replace with:

**SI03 ENQUIRIES DURING THE SOLICITATION PERIOD**

1. Enquiries regarding this bid must be submitted in writing to the Contracting Officer named on the Invitation to Tender - Page 1 as early as possible within the solicitation period. Except for the approval of alternative materials as described in GI15 of R2710T, enquiries should be received no later than 5 business days prior to the date set for solicitation closing to allow sufficient time to provide a response. Enquiries received after that time may not result in an answer being provided.

2. To ensure consistency and quality of the information provided to Bidders, the Contracting Officer shall examine the content of the enquiry and shall decide whether or not to issue an amendment.

3. All enquiries and other communications related to this bid sent throughout the solicitation period are to be directed ONLY to the Contracting Officer named on the Invitation to Tender - Page 1.

Failure to comply with this requirement may result in the bid being declared non-responsive.

3. Issue Addendum 002

- 
1. Addendum 002 is hereby issued (attached hereto).

**ALL OTHER TERMS AND CONDITIONS REMAIN THE SAME**

---

The following changes in the bid documents are effective immediately. This amendment will form part of the contract documents.

---

## **DRAWINGS**

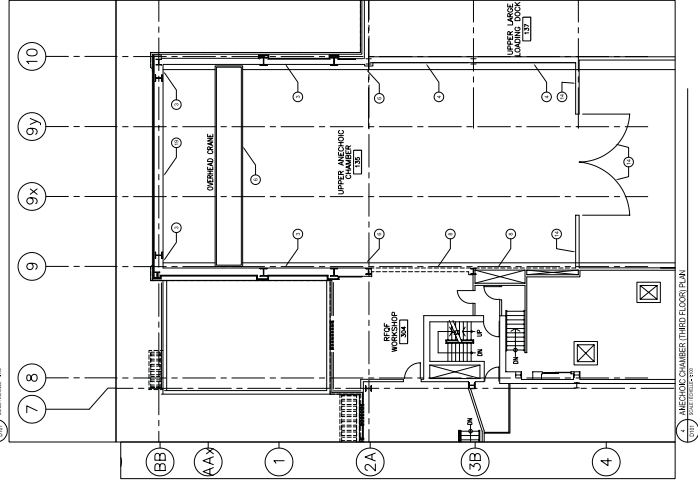
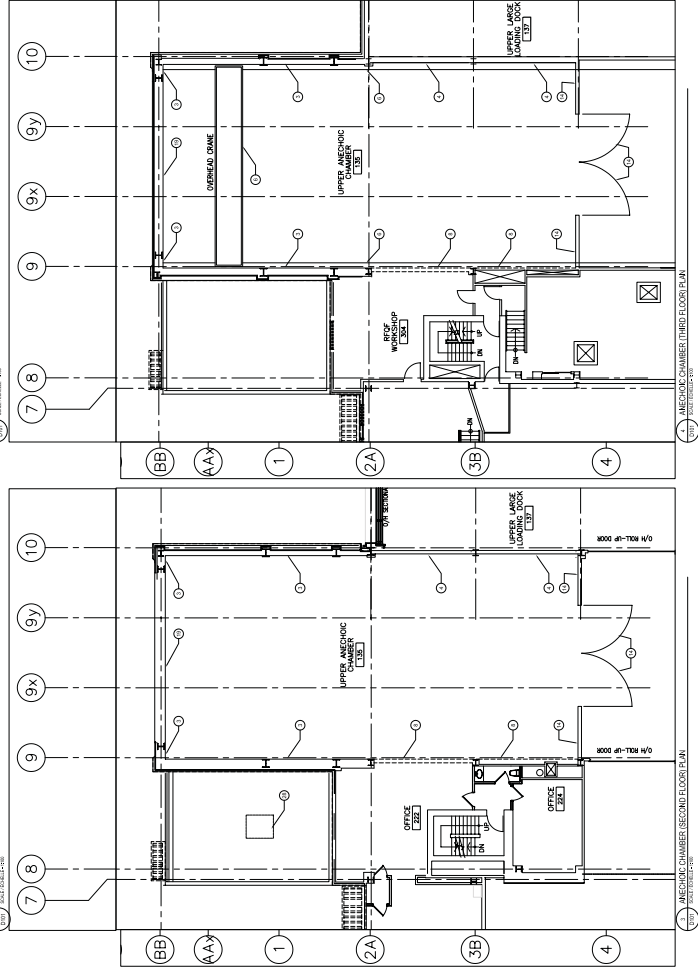
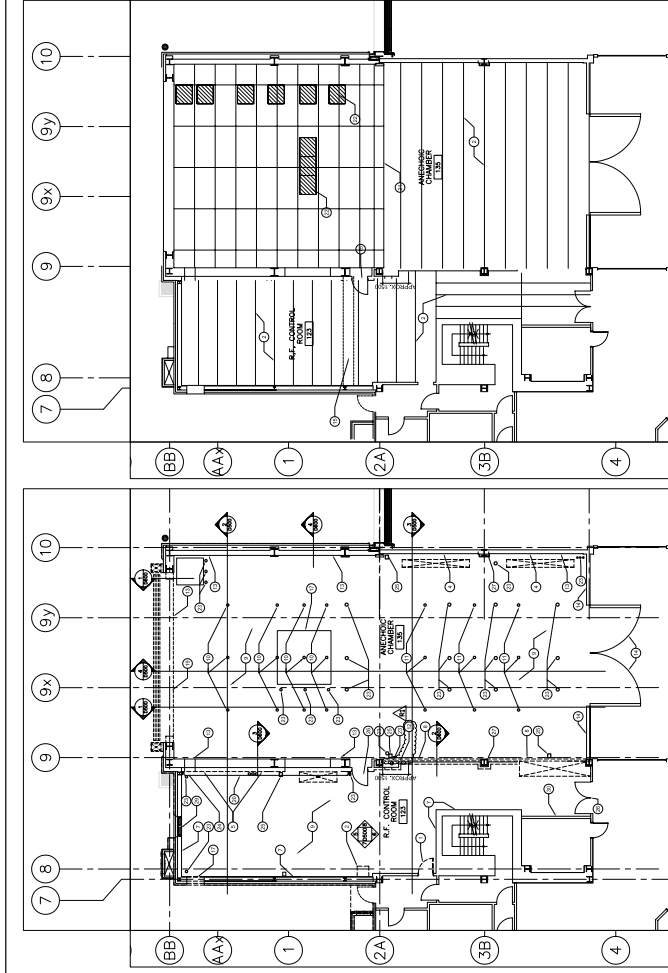
- 1 Architectural**
  - .1 Drawing D101 - Anechoic Chamber Plan - Demolition**
    - .1 Revised** Ground Floor Plan - 1/D101
    - .2 Delete** note 12 in its entirety and **Replace** with:  
12 Remove existing metal linear panels to underside of second floor.
  - .1 Drawing D500 - Anechoic Chamber Building Sections - Demolition**
    - .1 Details 7&8**
      - .1 Change** drawings scale from 1:100 to 1:50
- 2 Structural**
  - .1 Not Used**
- 3 Mechanical**
  - .1 Not Used**
- 4 Electrical**
  - .1 Not Used**

## **SPECIFICATIONS**

- 1 Architectural**
  - .1 Table of Contents**
    - .1 DELETE** section in its entirety and replace with **REVISED** section.
- 2 Structural**
  - .1 Not Used**
- 3 Mechanical**
  - .1 Not Used**
- 4 Electrical**
  - .1 Not Used**

**END OF ADDENDUM**


---



- | DRAWING NOTES: ② |   |
|------------------|---|
| 1                | REMOVE EXISTING CORE FRAME AND HANDRAIL.  |
| 2                | REMOVE EXISTING DOOR TO REMAIN.   |
| 3                | EXISTING WALL SHIELDING TO REMAIN.  |
| 4                | EXISTING HANDRAIL WALL TO REMAIN.   |
| 5                | REMOVE EXISTING ELECTRICAL FROM WALL, REFER TO ELECTRICAL DRAWINGS.                       |
| 6                | EXISTING CORE FRAME AND BEAM TO REMAIN.   |
| 7                | REMOVE EXISTING OPSYSUM BOARD WALL TO REMAIN.   |
| 8                | REMOVE EXISTING METAL STUD FRAMING AND OPSYSUM BOARD, PROTECT EXISTING THERIES TO REMAIN. |
| 9                | REMOVE EXISTING FLOORING TILES, SCOTCH AND PREP SLAB FOR NEW FLOOR FINISHES TO REMAIN.    |
| 10               | EXISTING UNBROADCAST LASER LEVEL MOUNT TO REMAIN.   |
| 11               | REMOVE EXISTING LASER LEVEL MOUNT TO BE REMOVED.  |
| 12               | REMOVE EXISTING METAL MOUNTS TO REMAIN.   |
| 13               | REMOVE EXISTING METAL MOUNTS TO REMAIN.   |
| 14               | REMOVE EXISTING METAL MOUNTS TO REMAIN.   |
| 15               | REMOVE EXISTING METAL MOUNTS TO REMAIN.   |
| 16               | REMOVE EXISTING METAL MOUNTS TO REMAIN.   |
| 17               | REMOVE EXISTING METAL MOUNTS TO REMAIN.   |
| 18               | REMOVE EXISTING METAL MOUNTS TO REMAIN.   |
| 19               | REMOVE EXISTING METAL MOUNTS TO REMAIN.   |
| 20               | REMOVE EXISTING METAL MOUNTS TO REMAIN.   |
| 21               | REMOVE EXISTING METAL MOUNTS TO REMAIN.   |
| 22               | REMOVE EXISTING METAL MOUNTS TO REMAIN.   |
| 23               | REMOVE EXISTING METAL MOUNTS TO REMAIN.   |
| 24               | REMOVE EXISTING METAL MOUNTS TO REMAIN.   |
| 25               | REMOVE EXISTING METAL MOUNTS TO REMAIN.   |
| 26               | REMOVE EXISTING METAL MOUNTS TO REMAIN.   |
| 27               | REMOVE EXISTING METAL MOUNTS TO REMAIN.   |
| 28               | REMOVE EXISTING METAL MOUNTS TO REMAIN.   |
| 29               | REMOVE EXISTING METAL MOUNTS TO REMAIN.   |
| 30               | REMOVE EXISTING METAL MOUNTS TO REMAIN.   |
| 31               | REMOVE EXISTING METAL MOUNTS TO REMAIN.   |
| 32               | REMOVE EXISTING METAL MOUNTS TO REMAIN.   |
| 33               | REMOVE EXISTING METAL MOUNTS TO REMAIN.   |
| 34               | REMOVE EXISTING METAL MOUNTS TO REMAIN.   |
| 35               | REMOVE EXISTING METAL MOUNTS TO REMAIN.   |
| 36               | REMOVE EXISTING METAL MOUNTS TO REMAIN.   |
| 37               | REMOVE EXISTING METAL MOUNTS TO REMAIN.   |
| 38               | REMOVE EXISTING METAL MOUNTS TO REMAIN.   |
| 39               | REMOVE EXISTING METAL MOUNTS TO REMAIN.   |
| 40               | REMOVE EXISTING METAL MOUNTS TO REMAIN.   |
| 41               | REMOVE EXISTING METAL MOUNTS TO REMAIN.   |
| 42               | REMOVE EXISTING METAL MOUNTS TO REMAIN.   |
| 43               | REMOVE EXISTING METAL MOUNTS TO REMAIN.   |
| 44               | REMOVE EXISTING METAL MOUNTS TO REMAIN.   |
| 45               | REMOVE EXISTING METAL MOUNTS TO REMAIN.   |
| 46               | REMOVE EXISTING METAL MOUNTS TO REMAIN.   |
| 47               | REMOVE EXISTING METAL MOUNTS TO REMAIN.   |
| 48               | REMOVE EXISTING METAL MOUNTS TO REMAIN.   |
| 49               | REMOVE EXISTING METAL MOUNTS TO REMAIN.   |
| 50               | REMOVE EXISTING METAL MOUNTS TO REMAIN.   |
| 51               | REMOVE EXISTING METAL MOUNTS TO REMAIN.   |
| 52               | REMOVE EXISTING METAL MOUNTS TO REMAIN.   |
| 53               | REMOVE EXISTING METAL MOUNTS TO REMAIN.   |
| 54               | REMOVE EXISTING METAL MOUNTS TO REMAIN.   |
| 55               | REMOVE EXISTING METAL MOUNTS TO REMAIN.   |
| 56               | REMOVE EXISTING METAL MOUNTS TO REMAIN.   |
| 57               | REMOVE EXISTING METAL MOUNTS TO REMAIN.   |
| 58               | REMOVE EXISTING METAL MOUNTS TO REMAIN.   |
| 59               | REMOVE EXISTING METAL MOUNTS TO REMAIN.   |
| 60               | REMOVE EXISTING METAL MOUNTS TO REMAIN.   |
| 61               | REMOVE EXISTING METAL MOUNTS TO REMAIN.   |
| 62               | REMOVE EXISTING METAL MOUNTS TO REMAIN.   |
| 63               | REMOVE EXISTING METAL MOUNTS TO REMAIN.   |
| 64               | REMOVE EXISTING METAL MOUNTS TO REMAIN.   |
| 65               | REMOVE EXISTING METAL MOUNTS TO REMAIN.   |
| 66               | REMOVE EXISTING METAL MOUNTS TO REMAIN.   |
| 67               | REMOVE EXISTING METAL MOUNTS TO REMAIN.   |
| 68               | REMOVE EXISTING METAL MOUNTS TO REMAIN.   |
| 69               | REMOVE EXISTING METAL MOUNTS TO REMAIN.   |
| 70               | REMOVE EXISTING METAL MOUNTS TO REMAIN.   |
| 71               | REMOVE EXISTING METAL MOUNTS TO REMAIN.   |
| 72               | REMOVE EXISTING METAL MOUNTS TO REMAIN.   |
| 73               | REMOVE EXISTING METAL MOUNTS TO REMAIN.   |
| 74               | REMOVE EXISTING METAL MOUNTS TO REMAIN.   |
| 75               | REMOVE EXISTING METAL MOUNTS TO REMAIN.   |
| 76               | REMOVE EXISTING METAL MOUNTS TO REMAIN.   |
| 77               | REMOVE EXISTING METAL MOUNTS TO REMAIN.   |
| 78               | REMOVE EXISTING METAL MOUNTS TO REMAIN.   |
| 79               | REMOVE EXISTING METAL MOUNTS TO REMAIN.   |
| 80               | REMOVE EXISTING METAL MOUNTS TO REMAIN.   |
| 81               | REMOVE EXISTING METAL MOUNTS TO REMAIN.   |
| 82               | REMOVE EXISTING METAL MOUNTS TO REMAIN.   |
| 83               | REMOVE EXISTING METAL MOUNTS TO REMAIN.   |
| 84               | REMOVE EXISTING METAL MOUNTS TO REMAIN.   |
| 85               | REMOVE EXISTING METAL MOUNTS TO REMAIN.   |
| 86               | REMOVE EXISTING METAL MOUNTS TO REMAIN.   |
| 87               | REMOVE EXISTING METAL MOUNTS TO REMAIN.   |
| 88               | REMOVE EXISTING METAL MOUNTS TO REMAIN.   |
| 89               | REMOVE EXISTING METAL MOUNTS TO REMAIN.   |
| 90               | REMOVE EXISTING METAL MOUNTS TO REMAIN.   |
| 91               | REMOVE EXISTING METAL MOUNTS TO REMAIN.   |
| 92               | REMOVE EXISTING METAL MOUNTS TO REMAIN.   |
| 93               | REMOVE EXISTING METAL MOUNTS TO REMAIN.   |
| 94               | REMOVE EXISTING METAL MOUNTS TO REMAIN.   |
| 95               | REMOVE EXISTING METAL MOUNTS TO REMAIN.   |
| 96               | REMOVE EXISTING METAL MOUNTS TO REMAIN.   |
| 97               | REMOVE EXISTING METAL MOUNTS TO REMAIN.   |
| 98               | REMOVE EXISTING METAL MOUNTS TO REMAIN.   |
| 99               | REMOVE EXISTING METAL MOUNTS TO REMAIN.   |
| 100              | REMOVE EXISTING METAL MOUNTS TO REMAIN.   |

No.	Revision	Date
1.	ISSUED FOR 66% REVIEW	04/11/2013
2.	ISSUED FOR ETS REVIEW	04/24/2013
3.	ISSUED FOR 99% REVIEW	04/25/2013
4.	ISSUED FOR TENDER	04/26/2013
5.	ISSUED FOR ADDENDUM #1	04/26/2013






A. ~~disjoint~~ sets  
 B. ~~disjoint~~ sets  
 C. ~~disjoint~~ sets  
 D. ~~disjoint~~ sets

project project  
DAVID FLORIDA LABORATORY  
BLUE DING No. 65, SHIRLEY'S BAY, OCEANO

**BAY 2**  
**ANECHOIC CHAMBER**  
**REEF PROJECT**

drawing design  
ANECHOIC CHAMBER PLAN  
DEMOLITION

drawn	D.S. B.J.	control
date	04-29-2016	deadline
drawn	B.H.M.B.	
date	04-29-2016	examline
reviewed	B.H.	
date	04-29-2016	
approved	D.S.	approval
date	04-29-2016	
scale	as noted	
project no.	CSA15-06	no. du projet

drawing no.	no. du dessin
D-101	