

The following Addendum forms part of the Contract Documents for Project R.076516.013. The following changes, additions or deletions shall be made to the following documents as indicated and all other Contract Documents shall remain the same.

This Addendum Number 01 contains 8 written pages, and 44 attachments as follows:

Drawing M2.11 – Fire Protection Upgrade – Ground Floor Plan
Drawing M2.12 – Fire Protection Upgrade – Ground Floor Plan
Drawing M2.20 – Plumbing Upgrade – Basement Floor Plan
Drawing M2.21 – Plumbing Upgrade – Ground Floor Plan
Drawing M2.22 – Plumbing Upgrade – Second Floor Plan
Drawing M2.30 – HVAC Upgrade – Basement Floor Plan
Drawing M2.31 – HVAC Upgrade – Ground Floor Plan
Drawing M2.32 – HVAC Upgrade – Second Floor Plan
Drawing M2.35 – HVAC Piping – Second Floor Plan
Drawing M3.02 – VRF Systems Schematics
Drawing M3.04 – Mechanical Control Schematics
Drawing M5.01 – Mechanical Schedules

Drawing E1.01 – Electrical Site Plan
Drawing E3.02 – Electrical Lighting Plan- Ground Floor
Drawing E3.03 – Electrical Lighting Plan- Second Floor
Drawing E4.01 – Power and Communication Plan- Basement
Drawing E4.02 – Power and Communication Plan- Ground Floor
Drawing E4.03 – Power and Communication Plan- Second Floor
Drawing E4.04 – Communication Pathway and Access Point Plan – Basement
Drawing E4.05 – Communication Pathway and Access Point Plan - Ground Floor
Drawing E4.06 – Communication Pathway and Access Point Plan - Ground Floor
Drawing E5.01- Low Voltage- Basement
Drawing E5.02- Low Voltage- Ground Floor
Drawing E5.03- Low Voltage- Ground Floor
Drawing E6.02- Single Line Diagram-New
Drawing E6.08- Electrical Riser Diagram
Drawing E6.09- Electrical Details
Drawing E6.11- Panel Schedules
Drawing E6.12- Panel Schedules
Drawing E6.13- Panel Schedules

Sketch ASK-001
Sketch ASK-002
Sketch ASK-003
Sketch ASK-004
Sketch ASK-005
Sketch ASK-006
Sketch ASK-007
Sketch ASK-008
Sketch ASK-009
Sketch ASK-010
Sketch ASK-011
Sketch ASK-012
Sketch ASK-013

Sketch ASK-014

1 ARCHITECTURAL

1.1 DRAWINGS:

.1 DRAWING A2.00 – BASEMENT PLAN

- .1 Revise as shown in Sketch ASK-001, attached and forming part of this addendum.

.2 DRAWING A2.01 – GROUND FLOOR PLAN

- .1 Revise as shown in Sketches ASK-002 and ASK-003 attached and forming part of this addendum.

.3 DRAWING A2.02 – SECOND FLOOR PLAN

- .1 The nine (9) exterior window units on Second Floor Grid Line 2 and 2a on North Elevation and the first 3 exterior window units on Second Floor Grid Line A between GL 2 and 4 shall have laminated glass inner lite as per Ground Floor windows.

.4 DRAWING A4.02 – BUILDING ELEVATION MATERIALS

- .1 Revise Keynote 1 to: PROVIDE 11 CERAMIC TUBE SECTIONS AT THIS WINDOW.
- .2 Revise Keynote 4 to: PROVIDE 11 CERAMIC TUBE SECTIONS AT THIS WINDOW.
- .3 Revise Keynote 5 to: PROVIDE 11 CERAMIC TUBE SECTIONS AT THIS WINDOW.

.5 DRAWING A8.01 - GROUND FL FINISHES AND A8.02 SECOND FL FINISHES:

- .1 Stair 2, 3 and 4 shall have Sheet Rubber Flooring and Vinyl Stair Treads in accordance with Specification Section 09 65 16 (2.1) (.2) and (.3) at all stair landings and stair treads.

.6 DRAWING A9.03 – ENLARGED INTERIOR PLAN AND ELEVATION

- .1 Detail 4/A9.03; Revise as shown in Sketch ASK-010, attached and forming part of this addendum.
- .2 Detail 5/A9.03; Revise as shown in Sketch ASK-009, attached and forming part of this addendum.
- .3 Detail 6/A9.03; Revise as shown in Sketch ASK-009, attached and forming part of this addendum.
- .4 Detail 7/A9.03; Revise as shown in Sketch ASK-010, attached and forming part of this addendum.
- .5 Detail 8/A9.03; Revise as shown in Sketch ASK-008, attached and forming part of this addendum.

- .6 Detail 9/A9.03; Revise as shown in Sketch ASK-014, attached and forming part of this addendum.
- .7 Detail 10/A9.03; Revise as shown in Sketch ASK-013, attached and forming part of this addendum.
- .8 Detail 11/A9.03; Revise as shown in Sketch ASK-012, attached and forming part of this addendum.
- .9 Detail 12/A9.03; Revise as shown in Sketch ASK-011, attached and forming part of this addendum.

1.2 SPECIFICATIONS:

.1 SECTION 07 42 29 – CERAMIC WALL PANELS

- .1 Item 2.2.1.2; delete.
- .2 Item 2.2.1.3; revise to read as follows:
 - .3 Panel Profile:
 - .1 Type 1: Smooth Surface, 26 mm x 250 mm x 1000 mm (Typical)
 - .2 Type 2: Shallow Fluted Surface, 26 mm x 250 mm x 1000 mm (Typical)
 - .3 Type 3: Deep Fluted Surface, 26 mm x 250 mm x 1000 mm (Typical)
 - .4 Type 4: Tube Section, 50 mm x 50 mm x 1000 mm (Typical)

2 MECHANICAL

2.1 DRAWINGS:

- .1 DRAWING M2.11 – FIRE PROTECTION UPGRADE – GROUND FLOOR PLAN
 - .1 Replace forms part of this Addendum, incorporating the following changes:
 - .1 Revised arrangement of sprinkler heads and hazard zones and fire extinguishers to reflect new MER and COMM rooms' layout
- .2 DRAWING M2.12 – FIRE PROTECTION UPGRADE – GROUND FLOOR PLAN
 - .1 Replace forms part of this Addendum, incorporating the following changes:
 - .1 Revised arrangement of sprinkler heads and hazard zones and fire extinguishers to reflect new COMM room, office 208, IT workspace 211, meeting room 212 and open office space 213 layout

- .3 DRAWING M2.20 – PLUMBING UPGRADE – BASEMENT FLOOR PLAN
 - .1 Replace forms part of this Addendum, incorporating the following changes:
 - .1 Revised sanitary, condensate and domestic water plumbing to reflect new MER location, attached to and forming a part of this Addendum.
 - .2 Revised section through stair (2) to match the revised plumbing
 - .3 Added check meter for natural gas service for measurement purpose and added keynote addressing that
 - .4 Revised plumbing fixture connection schedule
- .4 DRAWING M2.21 – PLUMBING UPGRADE – GROUND FLOOR PLAN
 - .1 Replace forms part of this Addendum, incorporating the following changes:
 - .1 Revised sanitary, condensate and domestic water plumbing to reflect new MER location
 - .2 Revised plumbing layout in shower 156B, universal washroom 157 and washroom 156C to match structural and architectural plans
 - .3 Updated main gas service pipe size to be consistent with basement level
 - .4 Revised callout 1 (4, M2.21)
 - .5 Revised plumbing fixture connection schedule
- .5 DRAWING M2.22 – PLUMBING UPGRADE – SECOND FLOOR PLAN
 - .1 Replace forms part of this Addendum, incorporating the following changes:
 - .1 Revised sanitary, condensate and domestic water plumbing to reflect new COMM rooms layout
 - .2 Added condensate pipe missing sizes
 - .3 Added enlarged plan for janitor room 217
 - .4 Revised plumbing fixture connection schedule
- .6 DRAWING M2.30 – HVAC UPGRADE – BASEMENT FLOOR PLAN
 - .1 Replace forms part of this Addendum, incorporating the following changes:
 - .1 Revised AC unit tag in transformer room 011
 - .2 Deleted AC unit AC-8 in demark room 004A
 - .3 Added EV-64 to demark room 004A
 - .4 Revised airflow of terminal box TB-0-3
- .7 DRAWING M2.31 – HVAC UPGRADE – GROUND FLOOR PLAN
 - .1 Replace forms part of this Addendum, incorporating the following changes:
 - .1 Revised AC unit tag in electrical room 113A and COMM room 129
 - .2 Added ventilation duct for electrical room 113A and COMM room 129
 - .3 Revised the location of return grill for EV-16 in meeting room 118
 - .4 Revised the location of exhaust grill in universal washroom 157
 - .5 Revised airflow of terminal boxes TB-1-8, TB-1-9 and TB-1-30
 - .6 Revised airflow of office 120 diffuser
 - .7 Revised the note for linear diffuser blanked off sections on west side
 - .8 Revised the number of return grills R-1 and R-2

- .8 DRAWING M2.32 – HVAC UPGRADE – SECOND FLOOR PLAN
 - .1 Replace forms part of this Addendum, incorporating the following changes:
 - .2 Revised AC unit tag in electrical room 205 and COMM room 223
 - .3 Added ventilation duct for electrical room 205 and COMM room 223
 - .4 Revised EV-42 capacity in shared equipment room 219
 - .5 Revised ductwork to reflect new architectural layout for:
 - EV-60 in corridor 202B
 - EV-61 in storage and record room 203
 - EV-55 in open office space 213
 - EV-54 in meeting room 212
 - EV-53 in IT workspace 211
 - .6 Revised the location of return grills in QR 221, QR 206 and kitchenette 204
 - .7 Revised airflow of terminal box TB-2-21
 - .8 Revised the note for linear diffuser blanked off sections on west side
 - .9 Revised the number of return grills R-1 and R-2
- .9 DRAWING M2.35 – HVAC PIPING – SECOND FLOOR PLAN
 - .1 Replace forms part of this Addendum, incorporating the following changes:
 - .1 Revised heating piping and radiant panels to reflect new architectural layout in open office space 213, meeting room 212 and IT workspace 211
 - .2 Revised the length of radiant panel RP-54
- .10 DRAWING M3.02 – VRF SYSTEMS SCHEMATICS
 - .1 Replace forms part of this Addendum, incorporating the following changes:
 - .1 Revised VRF system CU-1 schematic to reflect relocation MER from basement
 - .2 Revised VRF system CU-4 schematic to reflect EV-42 capacity change
- .11 DRAWING M3.04 – MECHANICAL CONTROL SCHEMTAICS
 - .1 Replace forms part of this Addendum, incorporating the following changes:
 - .1 Revised heating hot water boiler control diagram to reflect addition of gas check meter and AI for the meter
- .12 DRAWING M5.01 – MECHANICAL SCHEDULES
 - .1 Replace forms part of this Addendum, incorporating the following changes:
 - .1 Revised split system schedule with new equipment tags and capacities to reflect MER and COMM rooms changes
 - .2 Added EV-64 and note 4 to evaporator schedule
 - .3 Revised EV-42 capacity in evaporator schedule
 - .4 Added note 3 to air source heat pumps schedule and revised the notes column
 - .5 Revised radiant panel schedule to reflect changes made
 - .6 Revised terminal box unit schedule to reflect changes made

2.2 SPECIFICATIONS

- .1 Not Used.

3 ELECTRICAL

3.1 DRAWINGS:

.1 DRAWING E1.01 – ELECTRICAL SITE PLAN

- .1 Replace forms part of this Addendum, incorporating the following changes:
 - .1 New cameras and push button alarms with strobe lights have been added.
 - .2 New conduit shall be installed from the existing gate to the base building for security wirings.

.2 DRAWING E3.02 – ELECTRICAL LIGHTING PLAN- GROUND FLOOR

- .1 Replace forms part of this Addendum, incorporating the following changes:
 - .1 Lighting layouts layout has been revised in order to incorporate changes to the floor layout.

.3 DRAWING E3.03 – ELECTRICAL LIGHTING PLAN- SECOND FLOOR

- .1 Replace forms part of this Addendum, incorporating the following changes:
 - .1 Lighting layouts layout has been revised in order to incorporate changes to the floor layout.

.4 DRAWING E4.01 – POWER AND COMMUNICATION PLAN- BASEMENT

- .1 Replace forms part of this Addendum, incorporating the following changes:
 - .1 Data and power outlets and connections for the Main Equipment room shall be deleted from the basement.

.5 DRAWING E4.02 – POWER AND COMMUNICATION PLAN- GROUND FLOOR

- .1 Replace forms part of this Addendum, incorporating the following changes:
 - .1 New Main Equipment Room has been relocated from the basement to the ground floor and second communication room has been changed to an office. Power and communication layout has been revised in order to incorporate changes to the floor layout.
 - .2 Power and communication layout has been revised in the meeting rooms, shared equipment area and tenant space.

.6 DRAWING E4.03 – POWER AND COMMUNICATION PLAN- SECOND FLOOR

- .1 Replace forms part of this Addendum, incorporating the following changes:
 - .1 Second communication room has been changed to an office. Power and data layout has been revised in order to incorporate changes to the floor layout.
 - .2 Power and communication layout has been revised in the meeting rooms, shared equipment area, IT workspace 211 and tenant space.

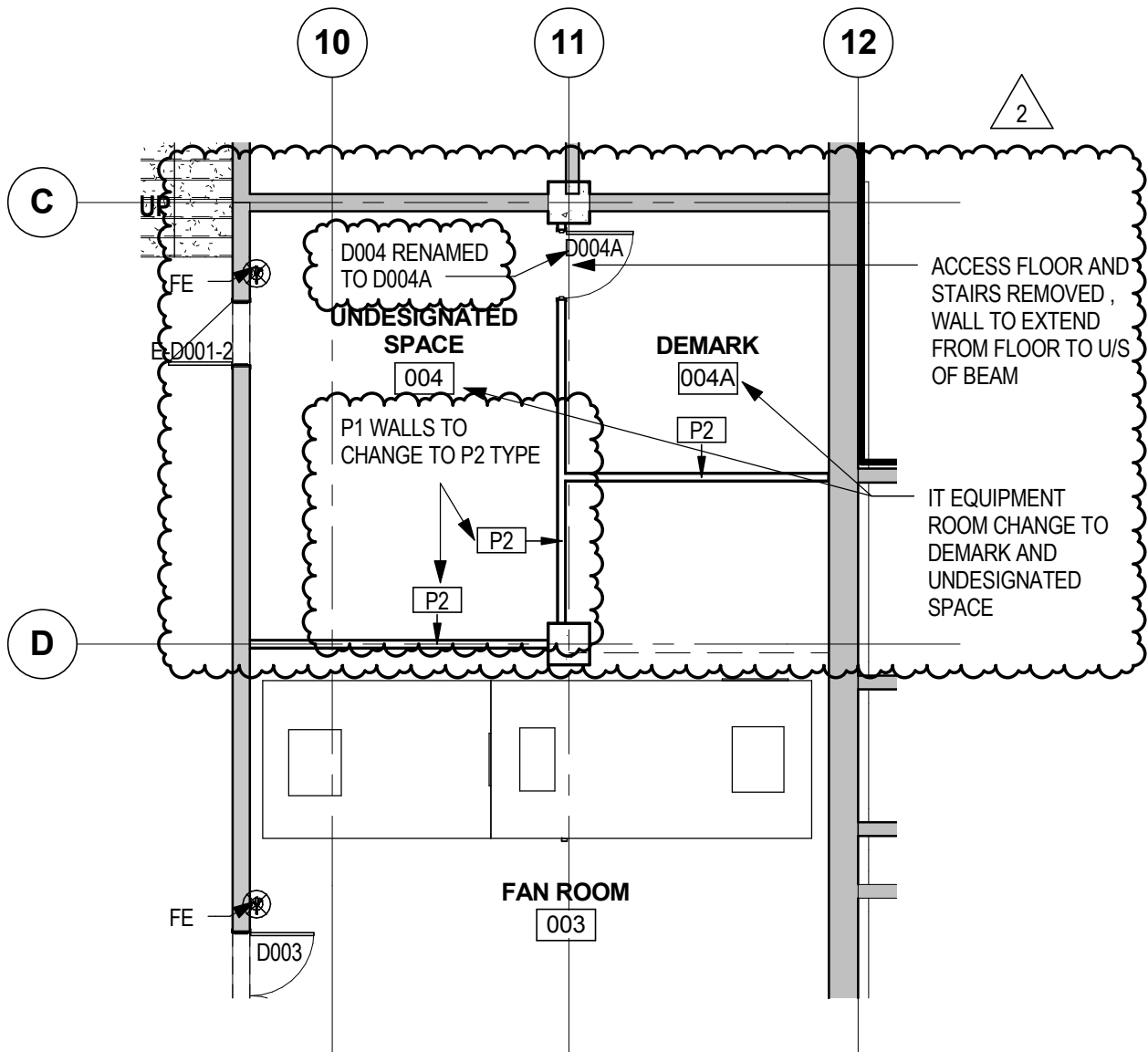
- .7 DRAWING E4.04 – COMMUNICATION PATHWAY AND ACCESS POINT PLAN – BASEMENT
 - .1 Replace forms part of this Addendum, incorporating the following changes:
 - .1 Communication pathway has been revised in order to incorporate changes to the floor layout.
- .8 DRAWING E4.05 – COMMUNICATION PATHWAY AND ACCESS POINT PLAN - GROUND FLOOR
 - .1 Replace forms part of this Addendum, incorporating the following changes:
 - .1 Communication pathway has been revised in order to incorporate changes to the floor layout.
- .9 DRAWING E4.06 – COMMUNICATION PATHWAY AND ACCESS POINT PLAN - GROUND FLOOR
 - .1 Replace forms part of this Addendum, incorporating the following changes:
 - .1 Communication pathway has been revised in order to incorporate changes to the floor layout.
- .10 DRAWING E5.01- LOW VOLTAGE- BASEMENT
 - .1 Replace forms part of this Addendum, incorporating the following changes:
 - .1 All security components have been deleted from the basement.
- .11 DRAWING E5.02- LOW VOLTAGE- GROUND FLOOR
 - .1 Replace forms part of this Addendum, incorporating the following changes:
 - .1 Security layout has been revised in order to incorporate changes to the floor and CCTV layout.
- .12 DRAWING E5.03- LOW VOLTAGE- GROUND FLOOR
 - .1 Replace forms part of this Addendum, incorporating the following changes:
 - .1 Security layout has been revised in order to incorporate changes to the floor and CCTV layout.
- .13 DRAWING E6.02- SINGLE LINE DIAGRAM-NEW
 - .1 Replace forms part of this Addendum.
- .14 DRAWING E6.08- ELECTRICAL RISER DIAGRAM
 - .1 Replace forms part of this Addendum, incorporating the following changes:
 - .1 Communication and grounding riser diagrams have been revised.
- .15 DRAWING E6.09- ELECTRICAL DETAILS
 - .1 Replace forms part of this Addendum, incorporating the following changes:
 - .1 Detail 2-E6.09 has been revised.

- .16 DRAWING E6.11- PANEL SCHEDULES
 - .1 Replace forms part of this Addendum.
- .17 DRAWING E6.12- PANEL SCHEDULES
 - .1 Replace forms part of this Addendum.
- .18 DRAWING E6.13- PANEL SCHEDULES
 - .1 Replace forms part of this Addendum.

3.2 SPECIFICATIONS:

- .1 SECTION 27 05 13 – COMMUNICATIONS SYSTEMS:
 - .1 Item 2.1; revise to read as follows:
 - 2.1 Telecommunication Room
 - .1 Provide telecommunication rooms to contain racks, analog voice termination fields and required cable routing hardware.
 - .2 Back Panels (For termination of analog voice trunk cabling only):
 - .1 Mount voice termination fields on fire retardant plywood panels as specified in on wall opposite from room entrance.
 - .2 Mount backbone termination fields to the left of horizontal voice fields from patch panels on racks.
 - .3 Locate conduits for data backbone adjacent to racks; locate conduits for analog voice backbone adjacent to voice termination fields.
 - .4 Provide ladder and wall mount management rings to properly support and dress future cables from conduits to racks and frames.
 - .2 Item 2.2; delete.

END OF ADDENDUM 01



OFFICE 114
FLOOR FINISH: EXISTING TO REMAIN
CEILING FINISH: EXPOSED CEILING

UNLESS NOTED OTHERWISE, ALL
ROOM DIMENSIONS TO REMAIN THE
SAME AS BID SET

2	ADDENDUM # 1	2017-03-24
REV	DESCRIPTION	DATE

PROJECT TITLE:

441 UNIVERSITY RECAPITALIZATION

441 UNIVERSITY AVENUE
WINDSOR, ON

DRAWING TITLE:

BASEMENT UNDESIGNATED SPACE AND DEMARK ROOM

DESIGNED BY: GG

DRAWN BY: AT

APPROVED BY: RN

TENDER:

M.B.

PLOT SCALE: 1 : 100

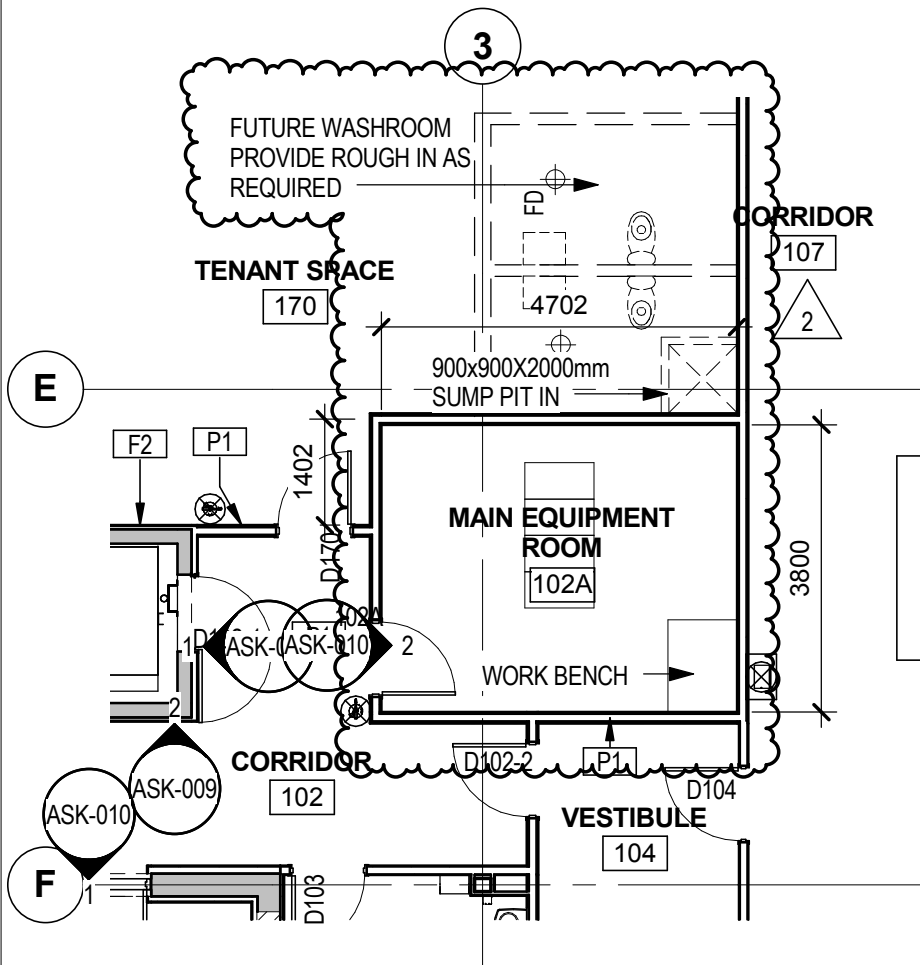
DRAWING NO: ASK-001

PROJECT NO: R.076516.013

PROJECT DATE: JUNE 07, 2016

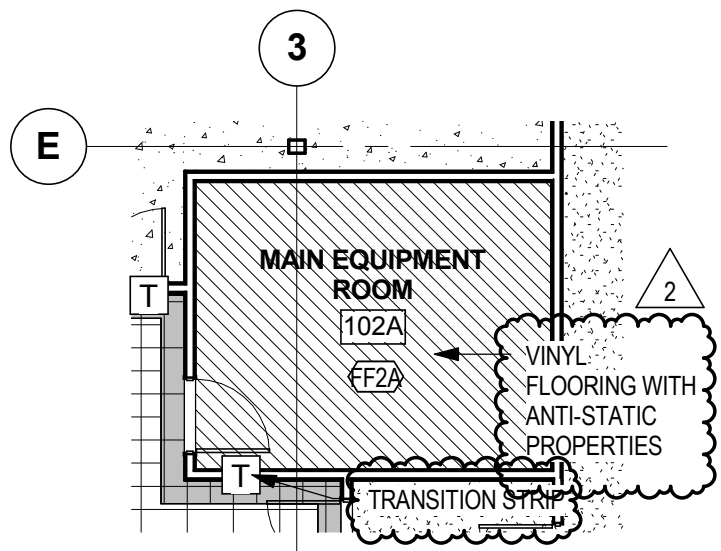
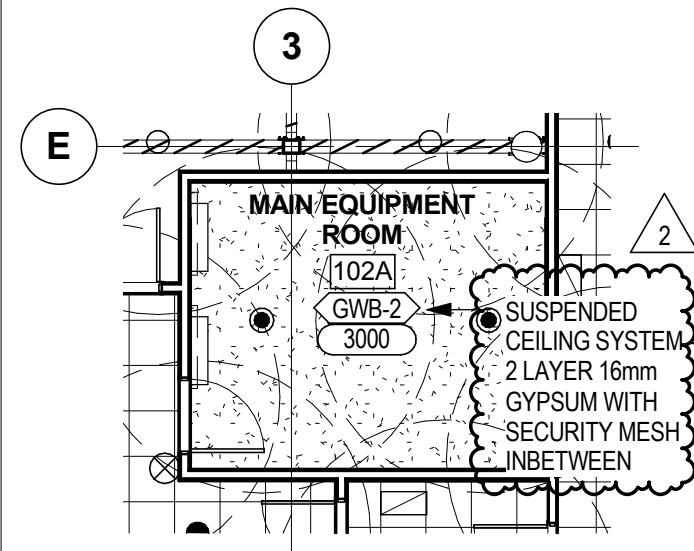
DATE PLOTTED: 2017-03-24

CAD FILE: -



MAIN EQUIPMENT ROOM 102A

DOOR (D102A) - 965x2135mm, TYPE D2, HM,
PAINTED, F1 HOLLOW METAL PAINTED
FRAME, J1 JAMB, #02 HARDWARE LOCKSET,
WITH ACCESS CONTROL AND DOOR
CONTACT



2	ADDENDUM # 1	2017-03-24
REV	DESCRIPTION	DATE

PROJECT TITLE:

441 UNIVERSITY RECAPITALIZATION

441 UNIVERSITY AVENUE
WINDSOR, ON

DRAWING TITLE:

MAIN EQUIPMENT ROOM

DESIGNED BY: GG

DRAWN BY: AT

APPROVED BY: RN

TENDER:

M.B.

PLOT SCALE: 1 : 100

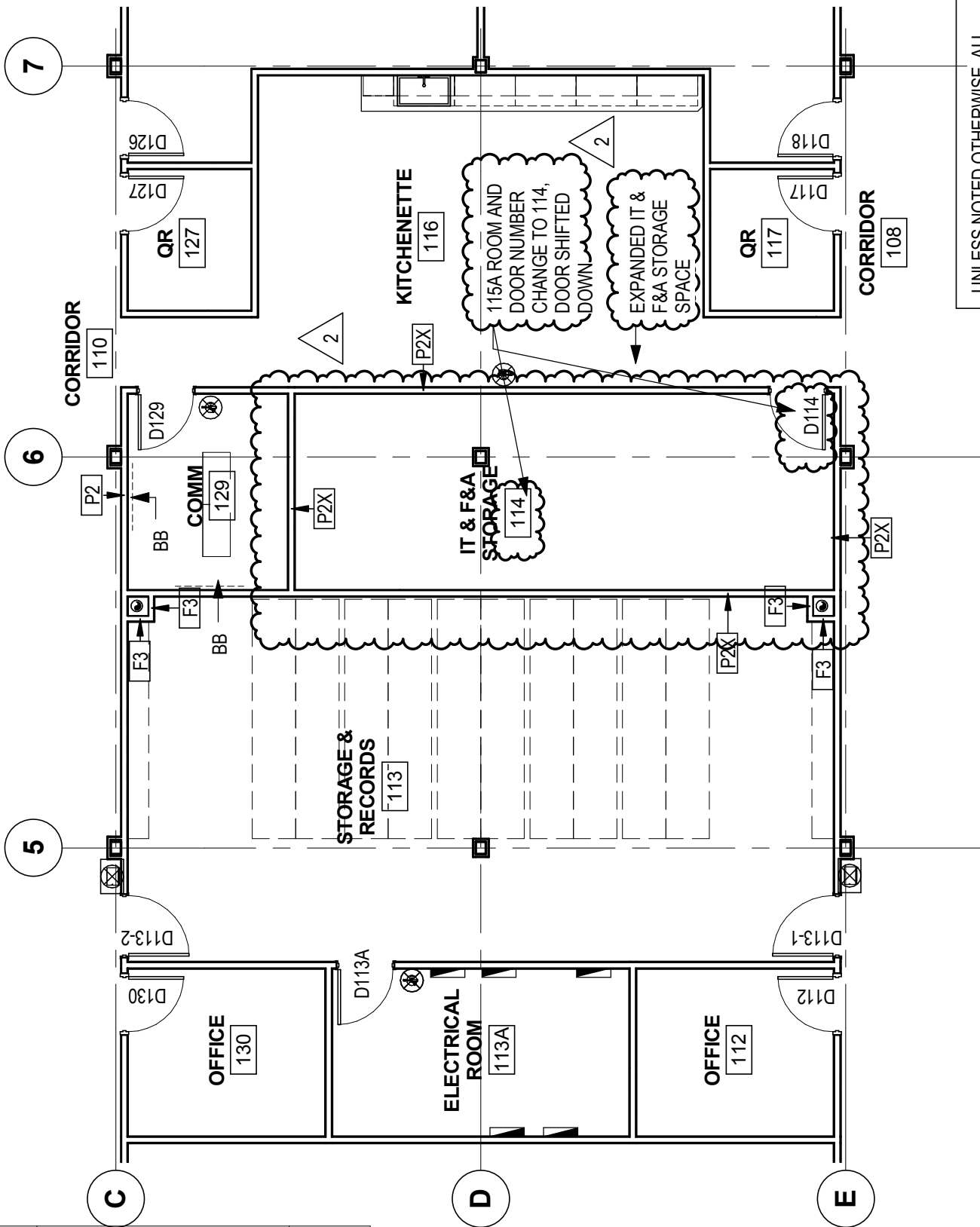
DRAWING NO: ASK-002

PROJECT NO: R.076516.013

PROJECT DATE: JUNE 07, 2016

DATE PLOTTED: 2017-03-24

CAD FILE: -



UNLESS NOTED OTHERWISE, ALL
ROOM DIMENSIONS TO REMAIN THE
SAME AS BID SET

2	ADDENDUM # 1	2017-03-24
1	ISSUED FOR BID	2017-02-24
REV	DESCRIPTION	DATE

PROJECT TITLE:

441 UNIVERSITY RECAPITALIZATION

441 UNIVERSITY AVENUE
WINDSOR, ON

DRAWING TITLE:

GROUND FLOOR COMM ROOM

DESIGNED BY: GG

DRAWN BY: AT

APPROVED BY: RN

TENDER:

M.B.

PLOT SCALE: 1 : 100

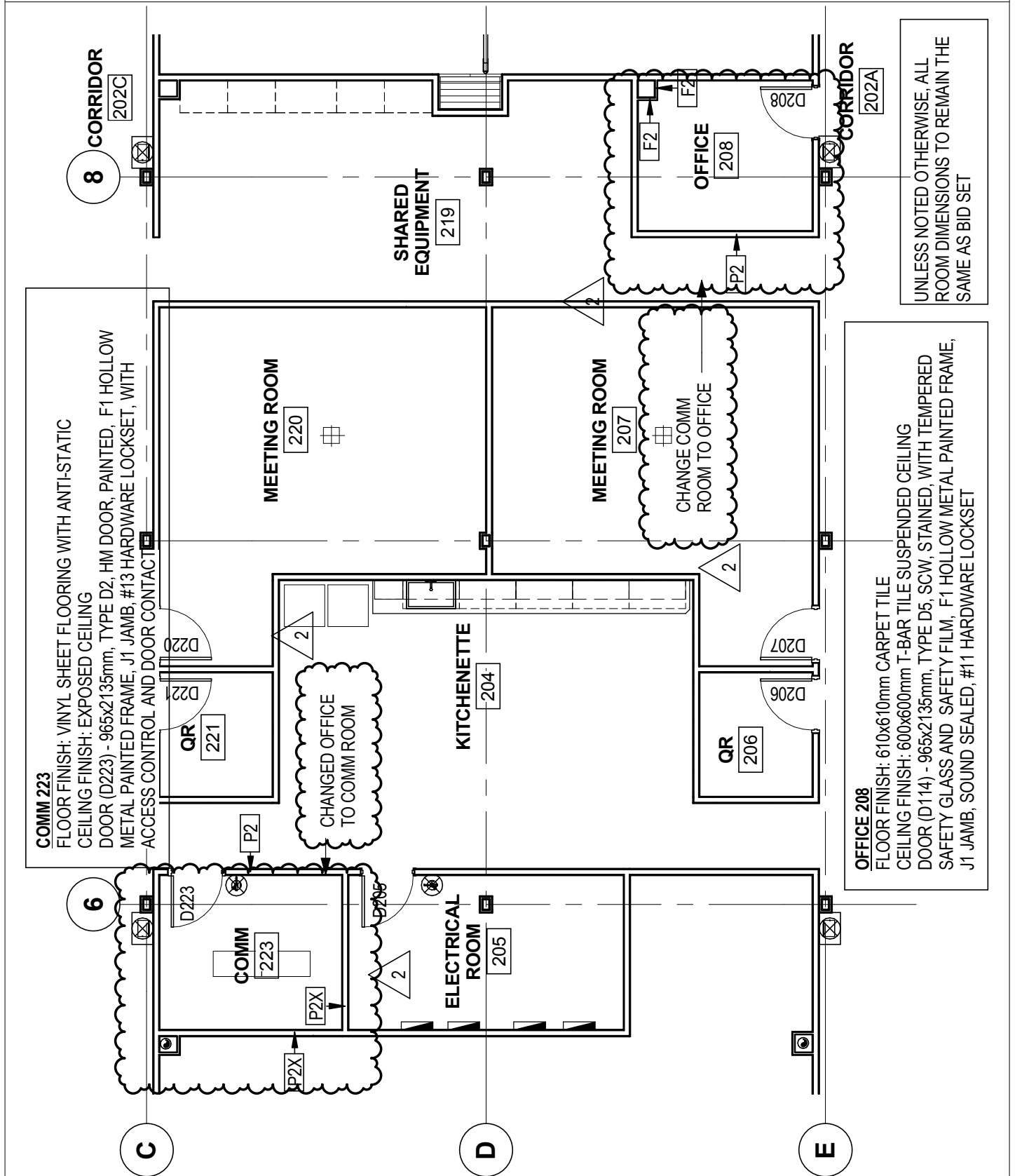
DRAWING NO: ASK-003

PROJECT NO: R.076516.013

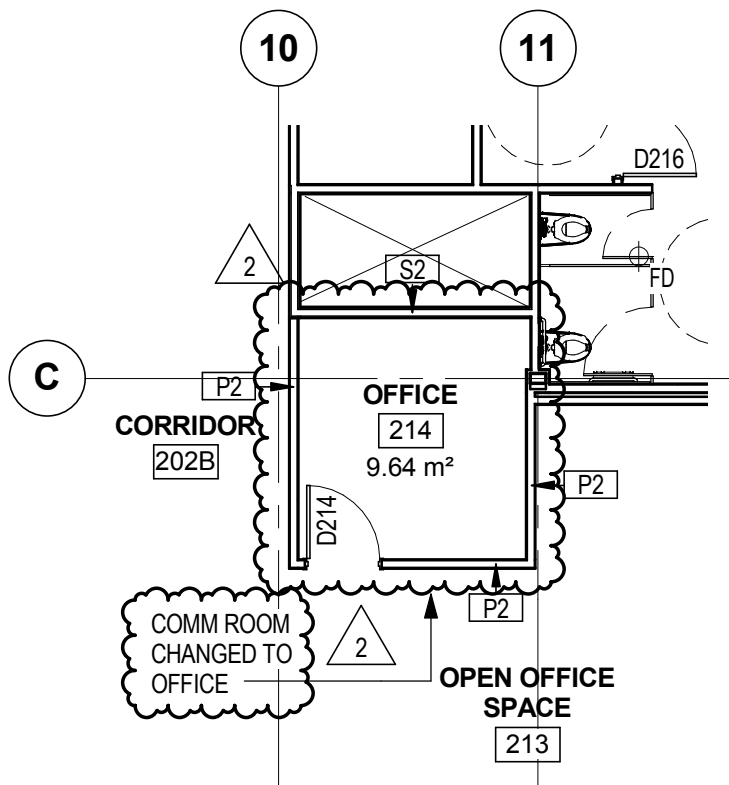
PROJECT DATE: JUNE 07, 2016

DATE PLOTTED: 2017-03-24

CAD FILE: -



2	ADDENDUM # 1	2017-03-24
REV	DESCRIPTION	DATE
PROJECT TITLE:		
441 UNIVERSITY RECAPITALIZATION		
441 UNIVERSITY AVENUE WINDSOR, ON		
DRAWING TITLE:		
SECOND FLOOR COMM ROOM		
DESIGNED BY: GG	TENDER:	DRAWING NO: ASK-004
DRAWN BY: AT	M.B.	PROJECT NO: R.076516.013
APPROVED BY: RN	PLOT SCALE: 1 : 100	PROJECT DATE: JUNE 07, 2016
		DATE PLOTTED: 2017-03-24
		CAD FILE: -



OFFICE 214

FLOOR FINISH: 610x610mm CARPET TILE

CEILING FINISH: 600x600mm T-BAR TILE SUSPENDED CEILING

DOOR (D214) - 965x2135mm, TYPE D5, SCW, STAINED, WITH TEMPERED SAFETY GLASS AND SAFETY FILM, F1 HOLLOW METAL PAINTED FRAME, J1 JAMB, SOUND SEALED, #11 HARDWARE LOCKSET

UNLESS NOTED OTHERWISE, ALL
ROOM DIMENSIONS TO REMAIN THE
SAME AS BID SET

2	ADDENDUM # 1	2017-03-24
REV	DESCRIPTION	DATE

PROJECT TITLE:

441 UNIVERSITY RECAPITALIZATION

441 UNIVERSITY AVENUE
WINDSOR, ON

DRAWING TITLE:

OFFICE 214

DESIGNED BY: GG

DRAWN BY: AT

APPROVED BY: RN

TENDER:

M.B.

PLOT SCALE: 1 : 100

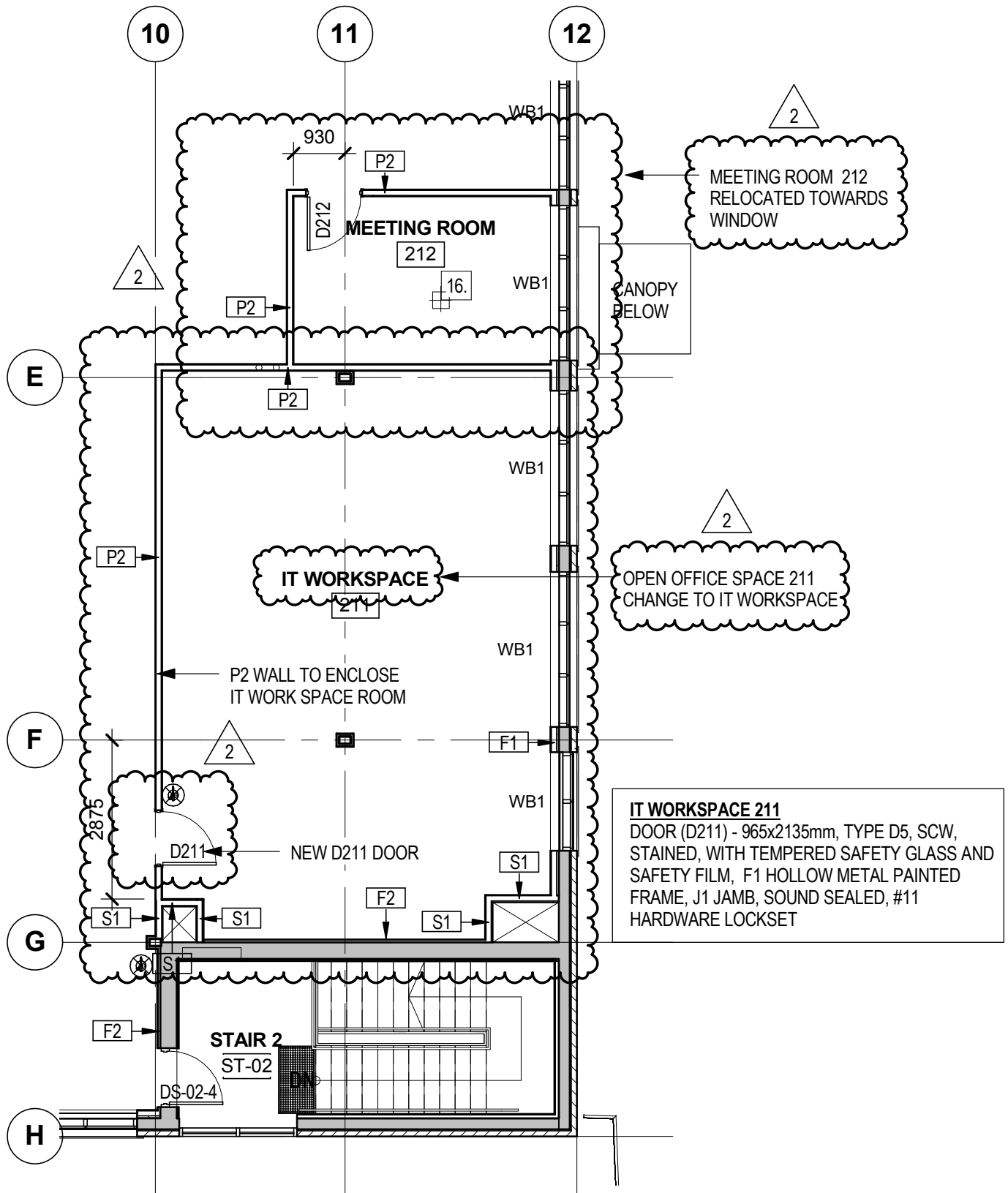
DRAWING NO: **ASK-005**

PROJECT NO: **R.076516.013**

PROJECT DATE: **JUNE 07, 2016**

DATE PLOTTED: **2017-03-24**

CAD FILE: -



2	ADDENDUM # 1	2017-03-24
REV	DESCRIPTION	DATE

PROJECT TITLE:

441 UNIVERSITY RECAPITALIZATION

441 UNIVERSITY AVENUE
WINDSOR, ON

DRAWING TITLE:

IT WORKSPACE 211 AND MEETING ROOM 212

DESIGNED BY: GG

DRAWN BY: AT

APPROVED BY: RN

TENDER:

M.B.

PLOT SCALE: 1 : 100

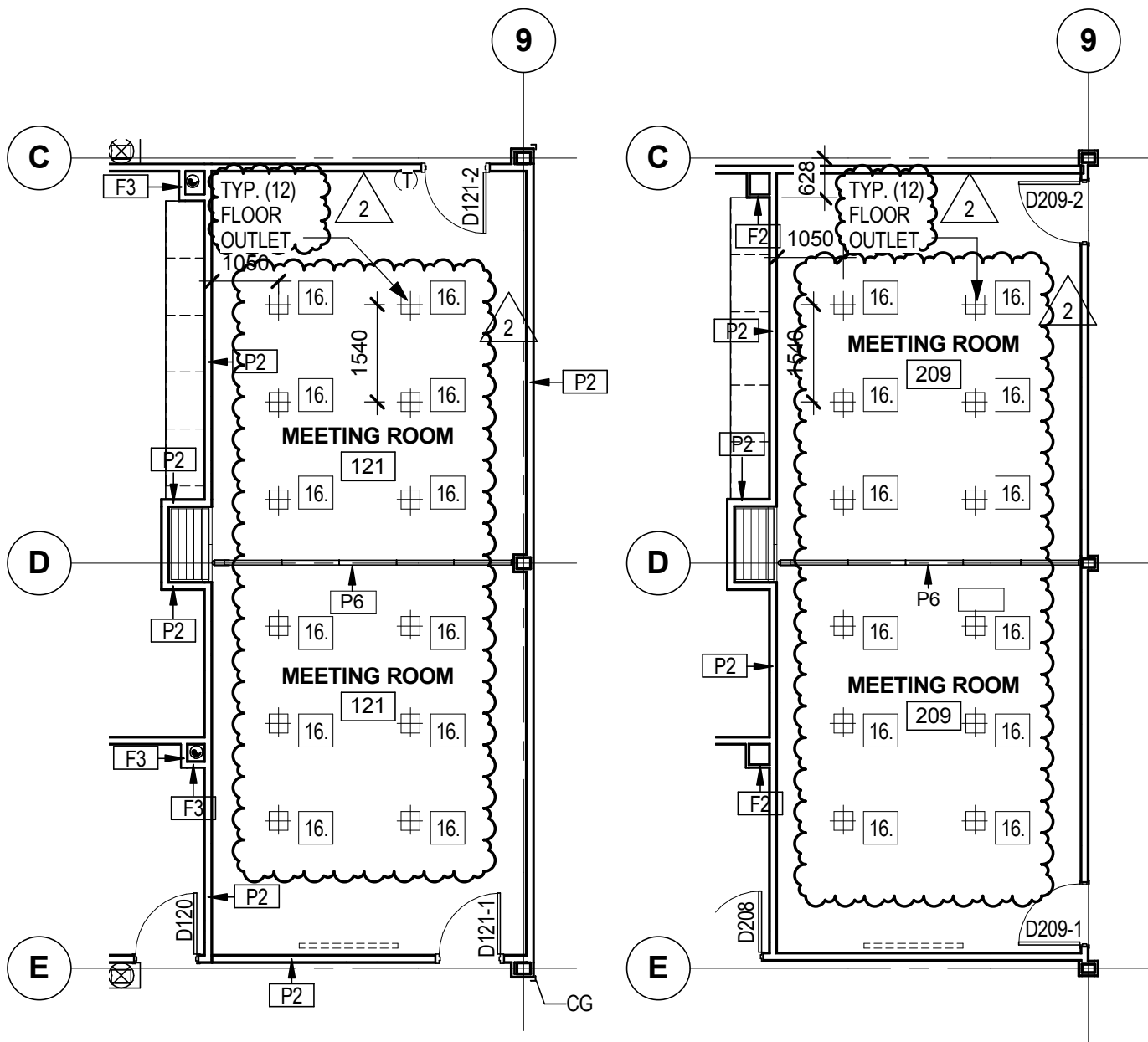
DRAWING NO: ASK-006

PROJECT NO: R.076516.013

PROJECT DATE: JUNE 07, 2016

DATE PLOTTED: 2017-03-24

CAD FILE: -



1 GROUND FLOOR PLAN - ADD-007 **2** SECOND FLOOR PLAN - ADD-007
ASK-007 SCALE: 1 : 100 ASK-007 SCALE: 1 : 100

MEETING ROOM 121 AND MEETING ROOM 209 TO HAVE 12 FLOOR OUTLETS IN EACH ROOM,
DEPARTMENTAL REPRESENTATIVE TO CONFIRM LOCATIONS

2	ADDENDUM # 1	2017-03-24
REV	DESCRIPTION	DATE

PROJECT TITLE:

441 UNIVERSITY RECAPITALIZATION

441 UNIVERSITY AVENUE
WINDSOR, ON

DRAWING TITLE:

MEETING ROOM 121 AND 209 FLOOR OUTLETS

DESIGNED BY: GG

DRAWN BY: AT

APPROVED BY: RN

TENDER:

M.B.

PLOT SCALE: 1 : 100

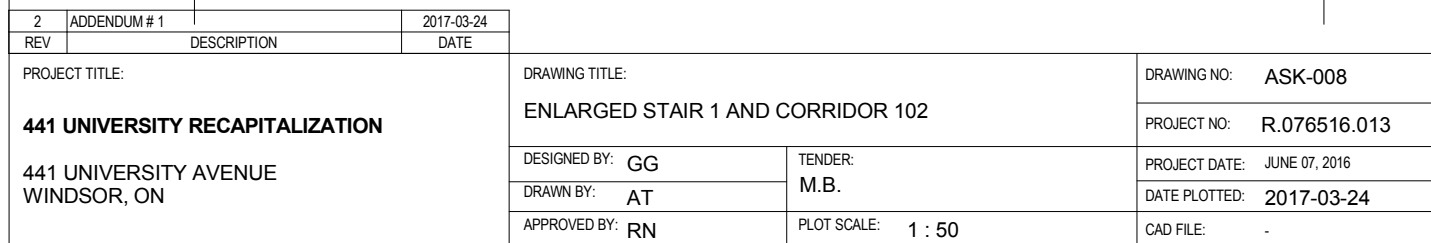
DRAWING NO: ASK-007

PROJECT NO: R.076516.013

PROJECT DATE: JUNE 07, 2016

DATE PLOTTED: 2017-03-24

CAD FILE: -





3

WOOD GRAIN PLASTIC
LAMINATE WALL FINISH ON
16mm BACKER BOARD, C/W
16mm ANOD. ALUM. U-TRIMS

TYP. SUSPENDED
TILE CEILING

200

NOTE: WALL FINISHES WITHIN ALL INTERIOR
WALLS OF CORRIDOR 102 TO MATCH
DETAILS 4/9.03 & 5/A9.03

GROUND FL

183660

100x100mm STAINLESS
STEEL CORNER GUARD
EXTEND TO U/S OF CEILING

TYP. 150mm STAINLESS STEEL
BASE AROUND PERIMETER OF
CORRIDOR 102 SPACE

2

ASK-009

CORRIDOR 102 - ELEVATOR AND TENANT SPACE

SCALE: 1 : 50

F

TYP. SUSPENDED
TILE CEILING

100x100mm CORNER
GUARD TO EXTEND
TO U/S OF CEILING

WOOD GRAIN PLASTIC
LAMINATE WALL FINISH ON
16mm BACKER BOARD, C/W
16mm ANOD. ALUM. U-TRIMS

1400

825

TYP. 150mm STAINLESS STEEL BASE AROUND
PERIMETER OF CORRIDOR 102 SPACE

GROUND FL

183660

1

ASK-009

CORRIDOR 102 - ELEVATOR AND PWGSC OFFICE

SCALE: 1 : 50

2	ADDENDUM # 1	2017-03-24
REV	DESCRIPTION	DATE

PROJECT TITLE:

441 UNIVERSITY RECAPITALIZATION

441 UNIVERSITY AVENUE
WINDSOR, ON

DRAWING TITLE:

**CORRIDOR 102 TENANT AND PWGSC OFFICE INTERIOR
ELEVATIONS**

DESIGNED BY: GG

DRAWN BY: AT

APPROVED BY: RN

TENDER:

M.B.

PLOT SCALE: 1 : 50

DRAWING NO: ASK-009

PROJECT NO: R.076516.013

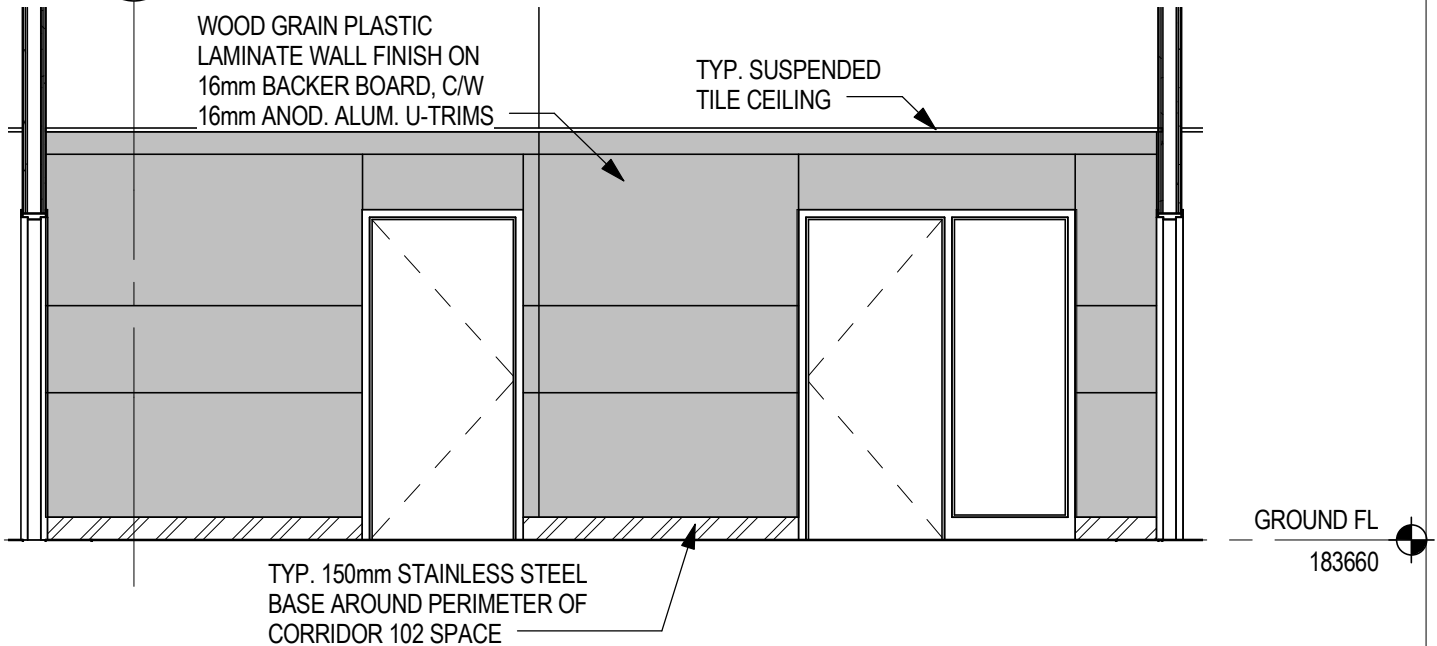
PROJECT DATE: JUNE 07, 2016

DATE PLOTTED: 2017-03-24

CAD FILE: -



3

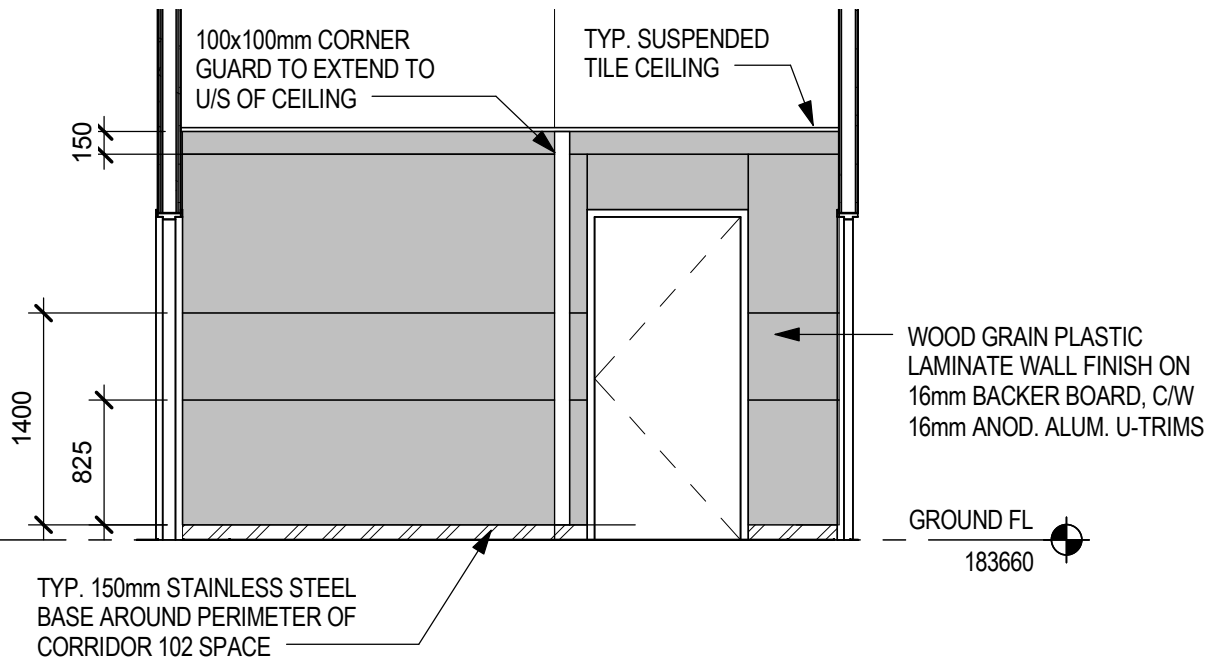


1

CORRIDOR 102 TO STAIR 1 ELEVATION

ASK-010

SCALE: 1 : 50



2

CORRIDOR 102 - TO STAIR 1 AND SOUTH WALL ELEVATION

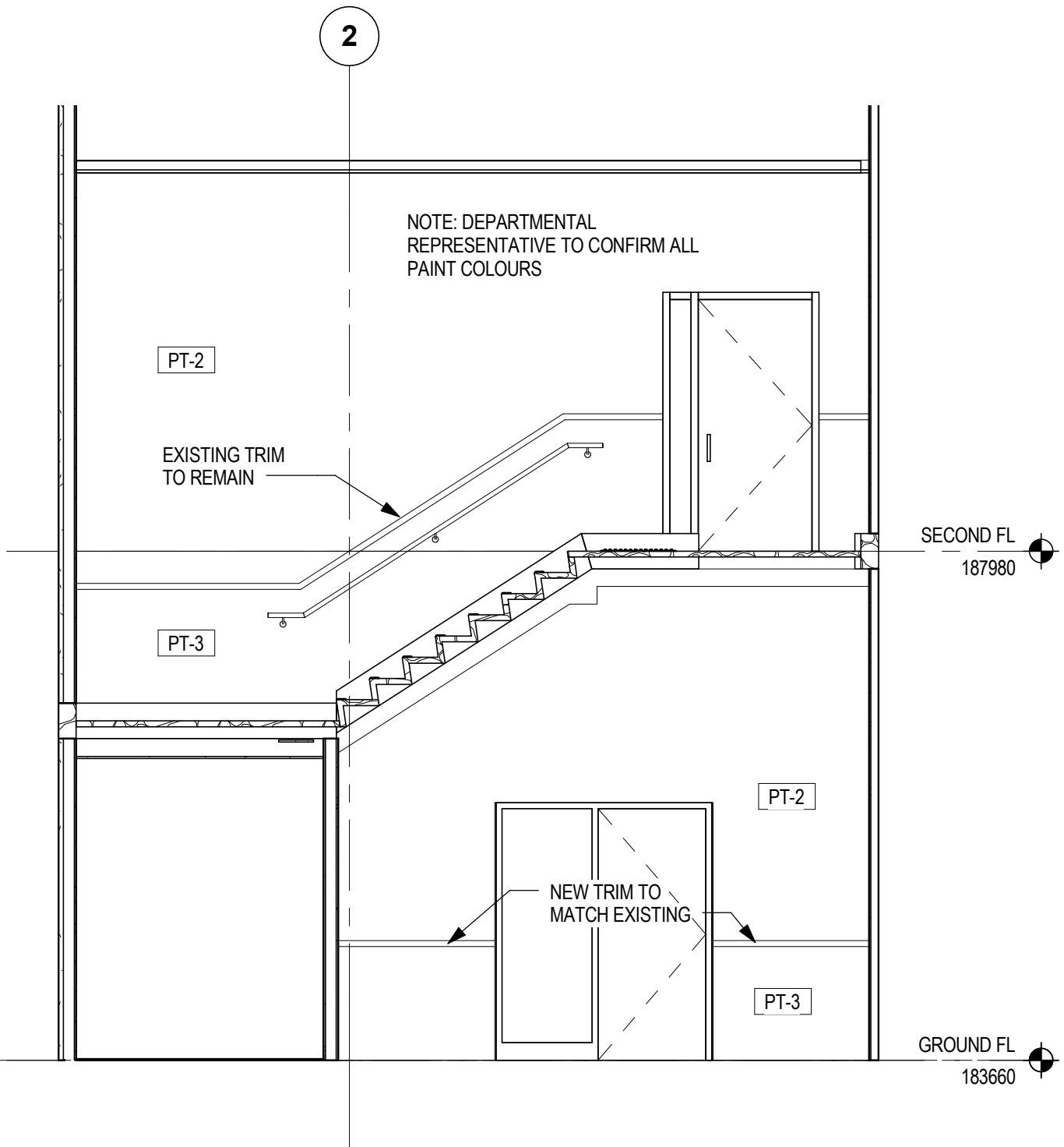
ASK-010

SCALE: 1 : 50

REV	DESCRIPTION	DATE			
PROJECT TITLE:			DRAWING TITLE:		DRAWING NO: ASK-010
441 UNIVERSITY RECAPITALIZATION			CORRIDOR 102 INTERIOR ELEVATIONS		PROJECT NO: R.076516.013
441 UNIVERSITY AVENUE WINDSOR, ON			DESIGNED BY: GG	TENDER: M.B.	PROJECT DATE: JUNE 07, 2016
			DRAWN BY: AT		DATE PLOTTED:
			APPROVED BY: RN	PLOT SCALE: 1 : 50	CAD FILE: -



2



2	ADDENDUM # 1	2017-03-24
REV	DESCRIPTION	DATE

PROJECT TITLE:

441 UNIVERSITY RECAPITALIZATION

441 UNIVERSITY AVENUE
WINDSOR, ON

DRAWING TITLE:

STAIR 1 - EAST WALL

DESIGNED BY: GG

DRAWN BY: AT

APPROVED BY: RN

TENDER:

M.B.

PLOT SCALE: 1 : 50

DRAWING NO: **ASK-011**

PROJECT NO: **R.076516.013**

PROJECT DATE: **JUNE 07, 2016**

DATE PLOTTED: **2017-03-24**

CAD FILE: -



H

F

T/O ROOF DECK
192240

PT-2

EXISTING TRIM
TO REMAIN

SECOND FL
187980

PT-3

EXISTING TRIM
TO REMAIN

GROUND FL
183660

2	ADDENDUM # 1	2017-03-24
REV	DESCRIPTION	DATE

PROJECT TITLE:

441 UNIVERSITY RECAPITALIZATION

441 UNIVERSITY AVENUE
WINDSOR, ON

DRAWING TITLE:

STAIR 1 - NORTH WALL

DESIGNED BY: GG

DRAWN BY: AT

APPROVED BY: RN

TENDER:

M.B.

PLOT SCALE: 1 : 50

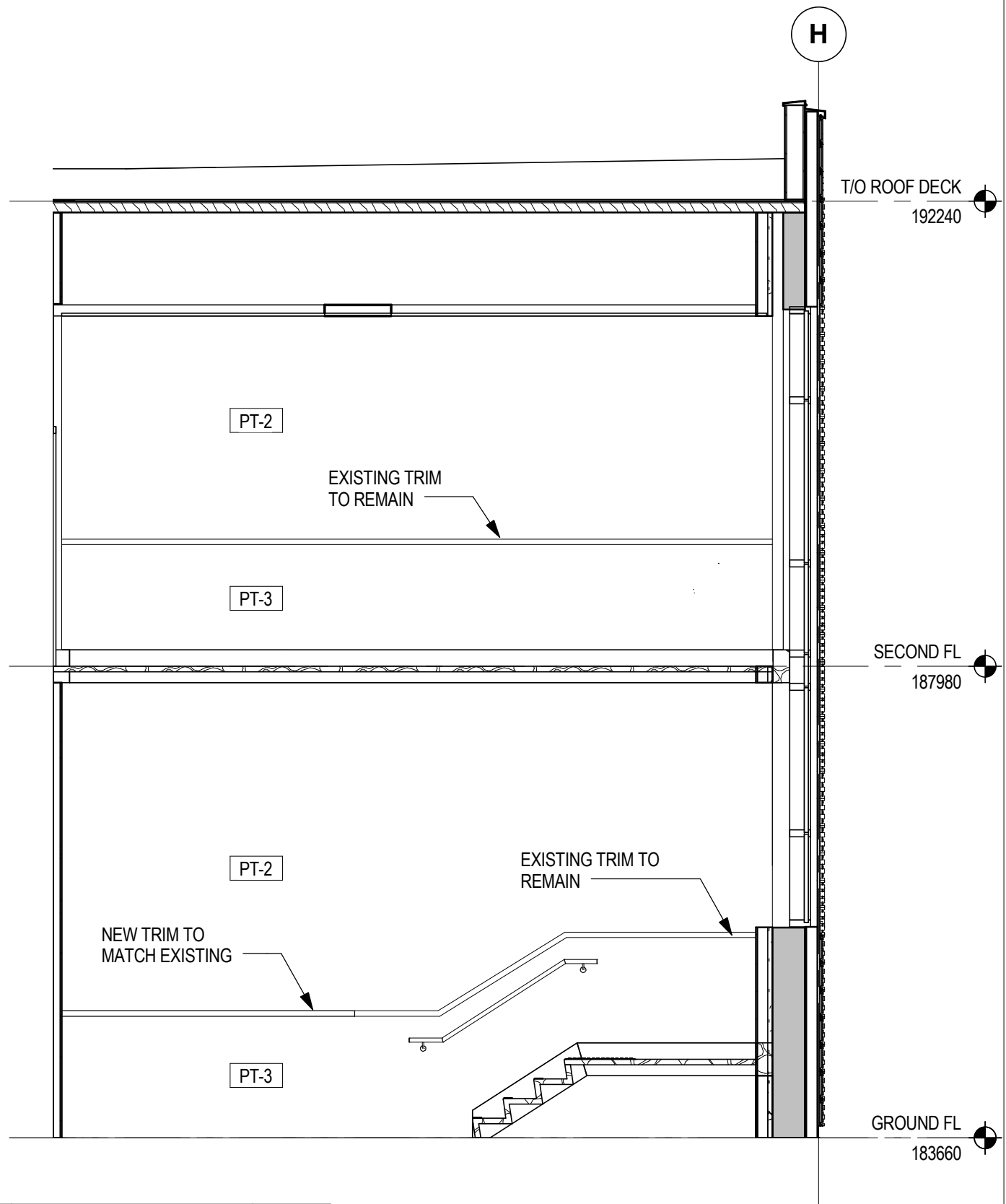
DRAWING NO: ASK-012

PROJECT NO: R.076516.013

PROJECT DATE: JUNE 07, 2016

DATE PLOTTED: 2017-03-24

CAD FILE: -



2	ADDENDUM # 1	2017-03-24
REV	DESCRIPTION	DATE

PROJECT TITLE:

441 UNIVERSITY RECAPITALIZATION

441 UNIVERSITY AVENUE
WINDSOR, ON

DRAWING TITLE:

STAIR 1 - SOUTH WALL

DESIGNED BY: GG

DRAWN BY: AT

APPROVED BY: RN

TENDER:

M.B.

PLOT SCALE: 1 : 50

DRAWING NO: ASK-013

PROJECT NO: R.076516.013

PROJECT DATE: JUNE 07, 2016

DATE PLOTTED: 2017-03-24

CAD FILE: -



2

T/O ROOF DECK
192240

SECOND FL
187980

GROUND FL
183660

EXISTING TRIM
TO REMAIN

PT-2

PT-3

2	ADDENDUM # 1	2017-03-24
REV	DESCRIPTION	DATE

PROJECT TITLE:

441 UNIVERSITY RECAPITALIZATION

441 UNIVERSITY AVENUE
WINDSOR, ON

DRAWING TITLE:

STAIR 1 - WEST WALL

DESIGNED BY: GG

DRAWN BY: AT

APPROVED BY: RN

TENDER:

M.B.

PLOT SCALE: 1 : 50

DRAWING NO: ASK-014

PROJECT NO: R.076516.013

PROJECT DATE: JUNE 07, 2016

DATE PLOTTED: 2017-03-24

CAD FILE: -