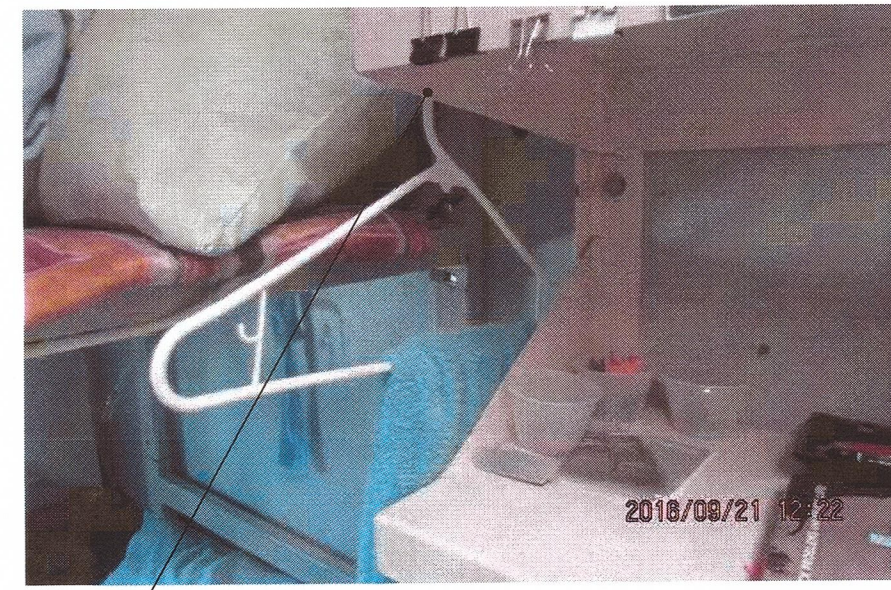




RADIATOR TO REMAIN

1 EXISTING BED
A02 N.T.S.



REMOVE & DISPOSE

6 EXISTING BED BOLTED TO WALL
A02 N.T.S.



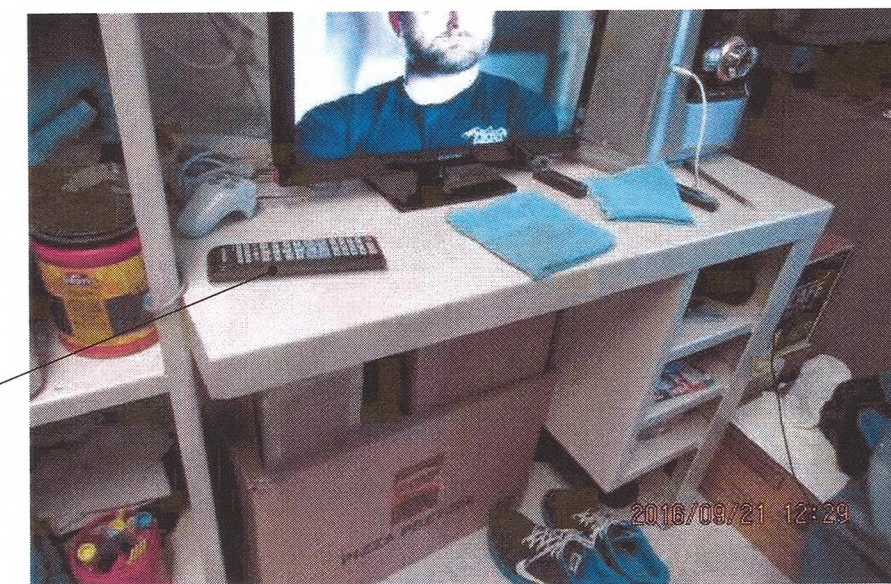
11 EXISTING LADDER USED AS SHELVES IN DOUBLE BUNK CELL
A02 N.T.S.

NOTE:
 ALL INMATE'S PERSONAL BELONGS WILL BE REMOVED FROM THE CELLS BEFORE CONTRACTOR COMMENCING THE WORK. CONTRACTOR SHALL ESTABLISH WORKING SCHEDULE AND SEQUENCE WITH DEPARTMENTAL REPRESENTATIVE WITHIN 10 DAYS AFTER CONTRACT AWARDED.



REMOVE & DISPOSE

2 EXISTING SHELVES 30"x61.5"
A02 N.T.S.



7 EXISTING DESK 22"x36"
A02 N.T.S.

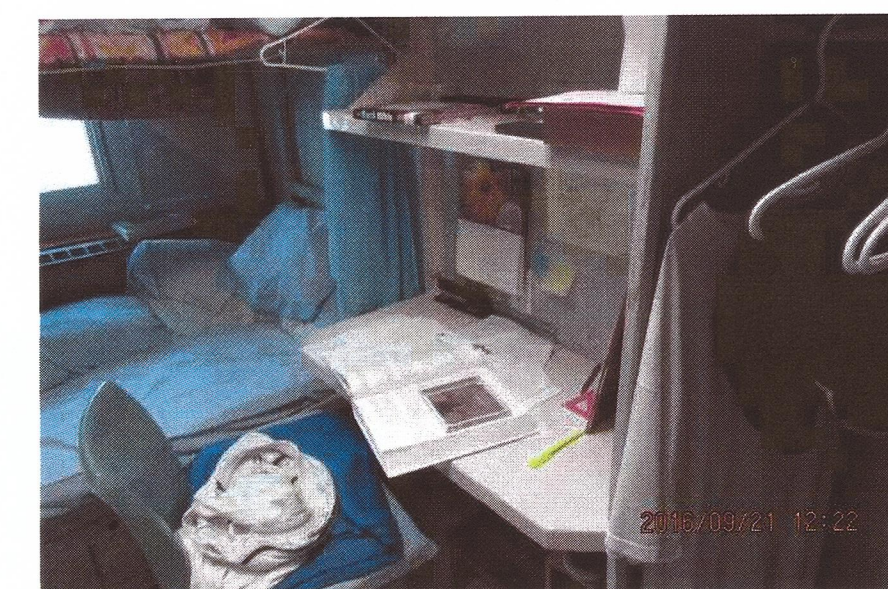


REMOVE & DISPOSE

3 EXISTING MEDICINE CABINET
A02 N.T.S.



8 EXISTING MEDICINE CABINET 12"x17"
A02 N.T.S.

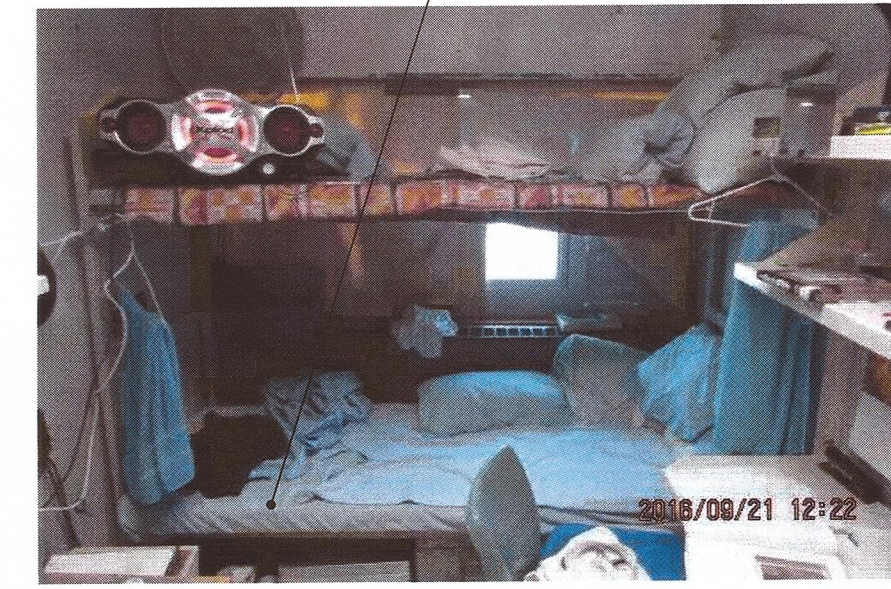


4 EXISTING DESK
A02 N.T.S.

REMOVE & DISPOSE



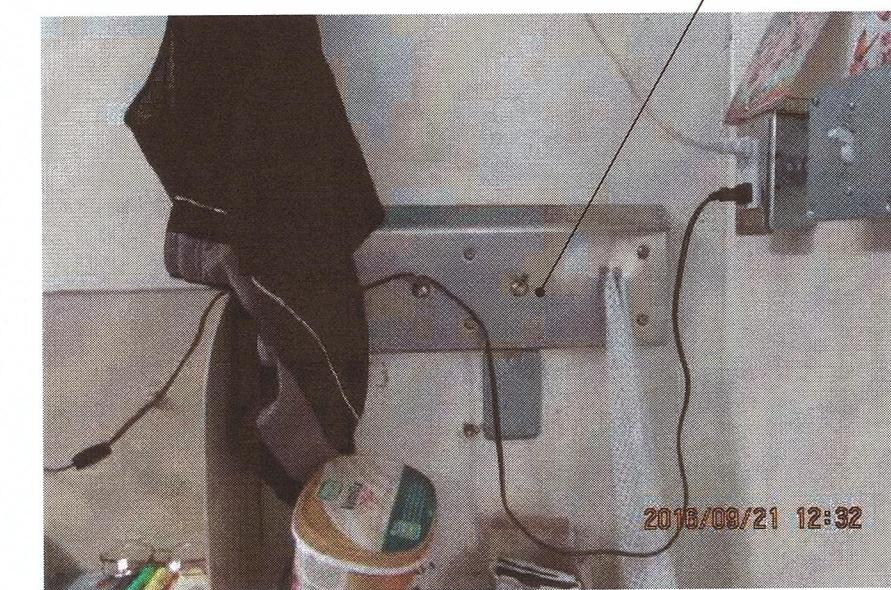
5 EXISTING DOUBLE BUNK BED ATTACHED TO WALL
A02 N.T.S.



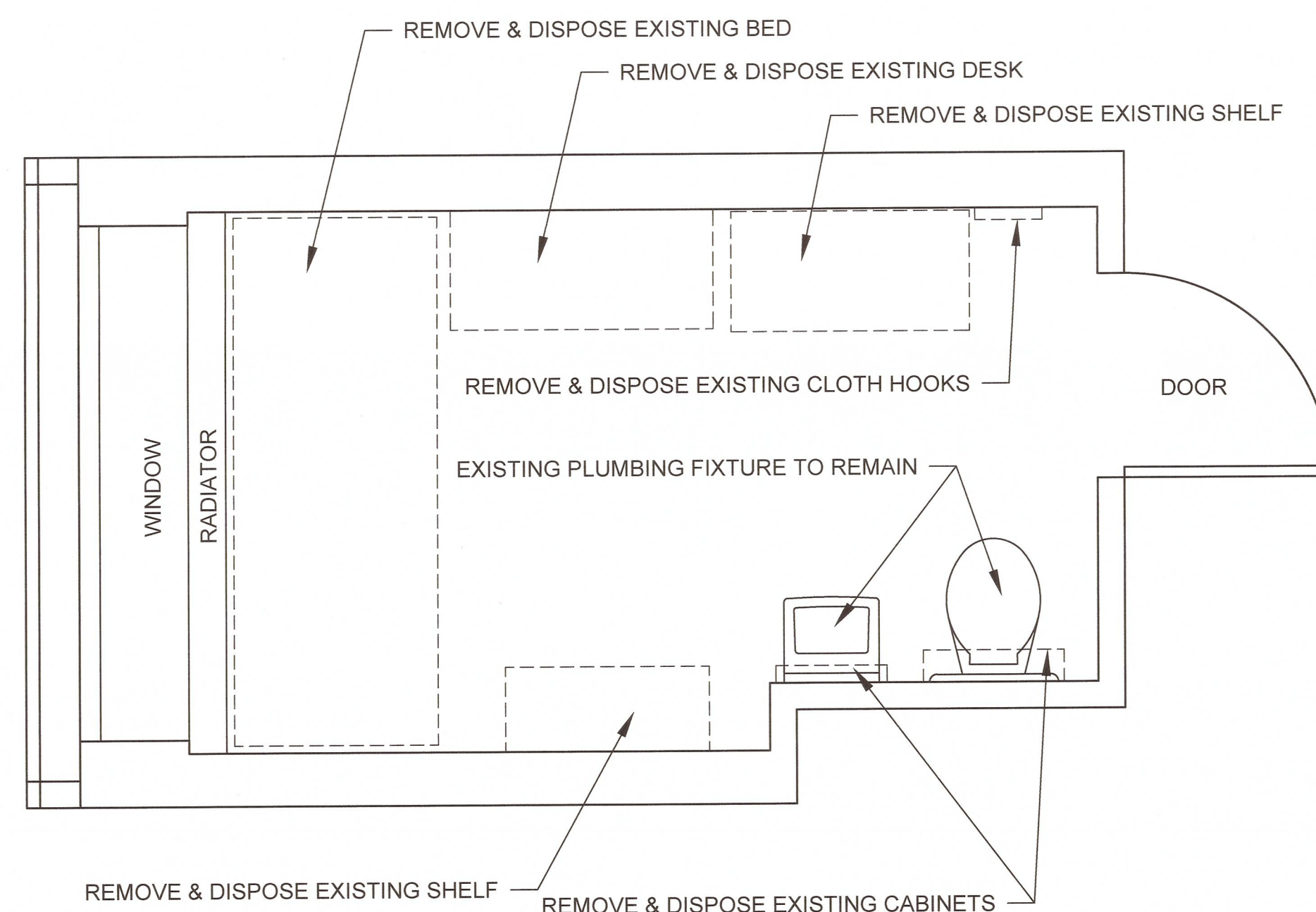
REMOVE & DISPOSE

9 EXISTING LAYOUT OF CELL FURNITURE
A02 N.T.S.

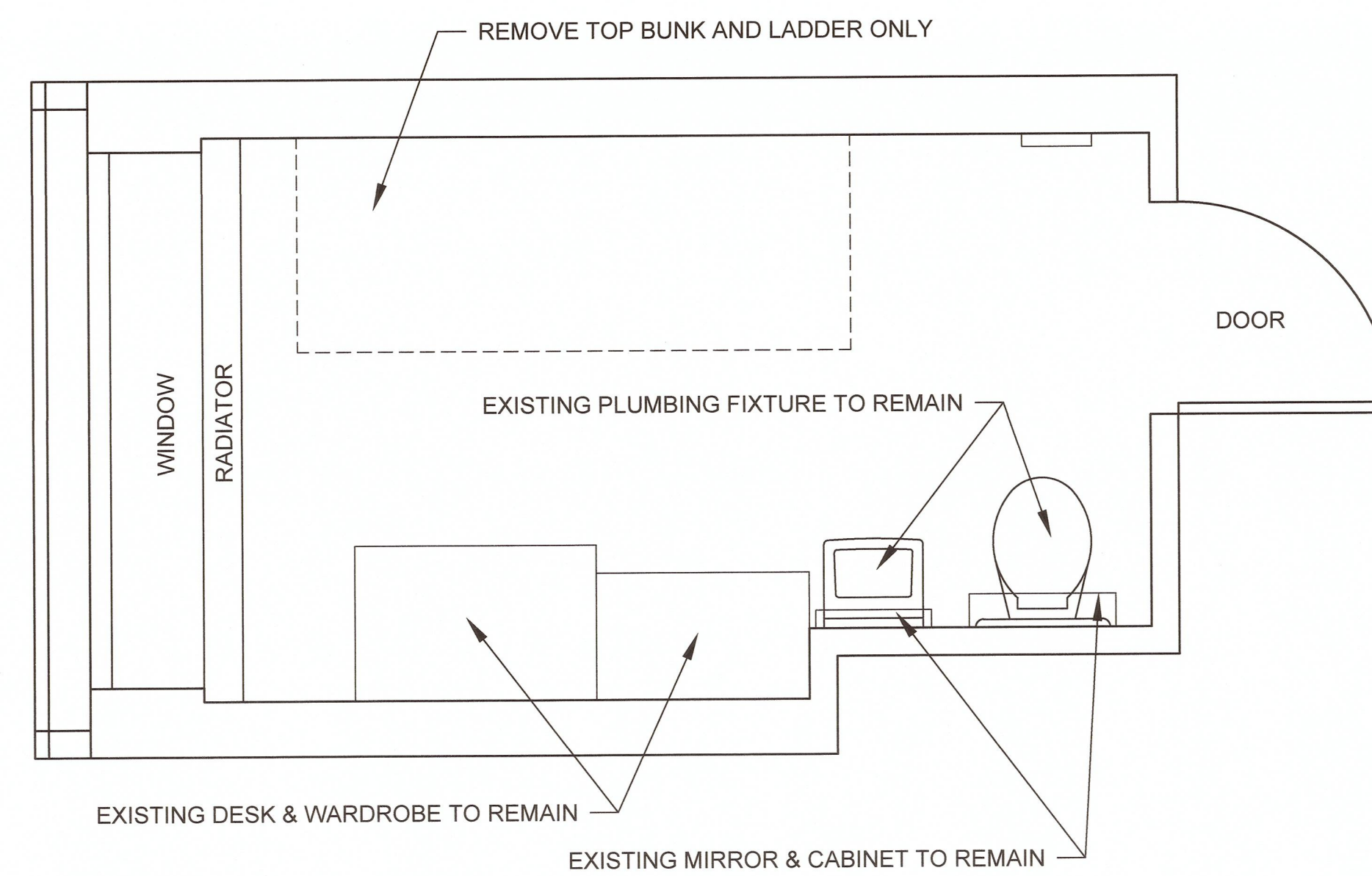
REMOVE & DISPOSE
 REPLACE WITH NEW HOOKS



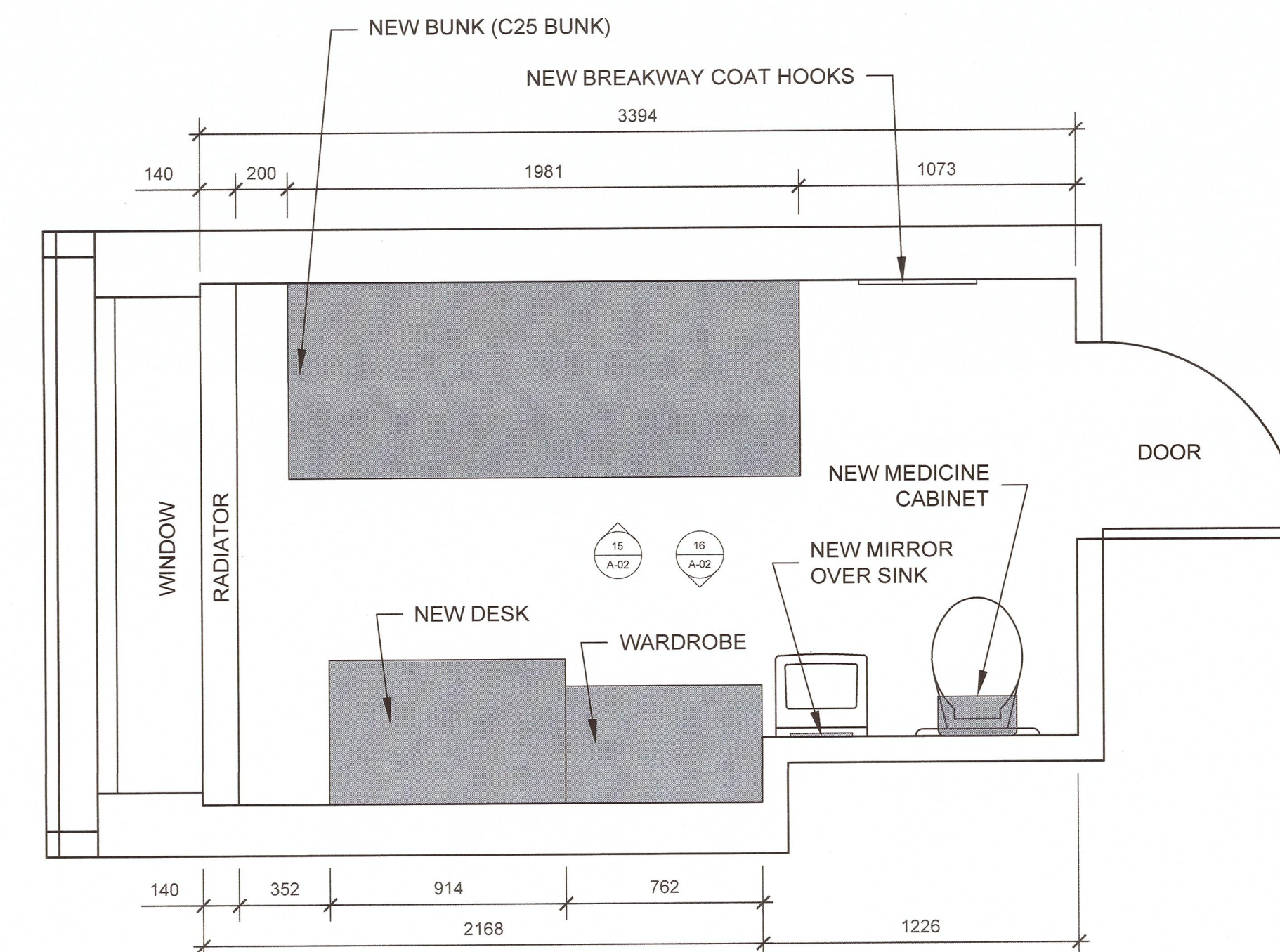
10 EXISTING COAT HOOKS, BREAKWAY
A02 N.T.S.



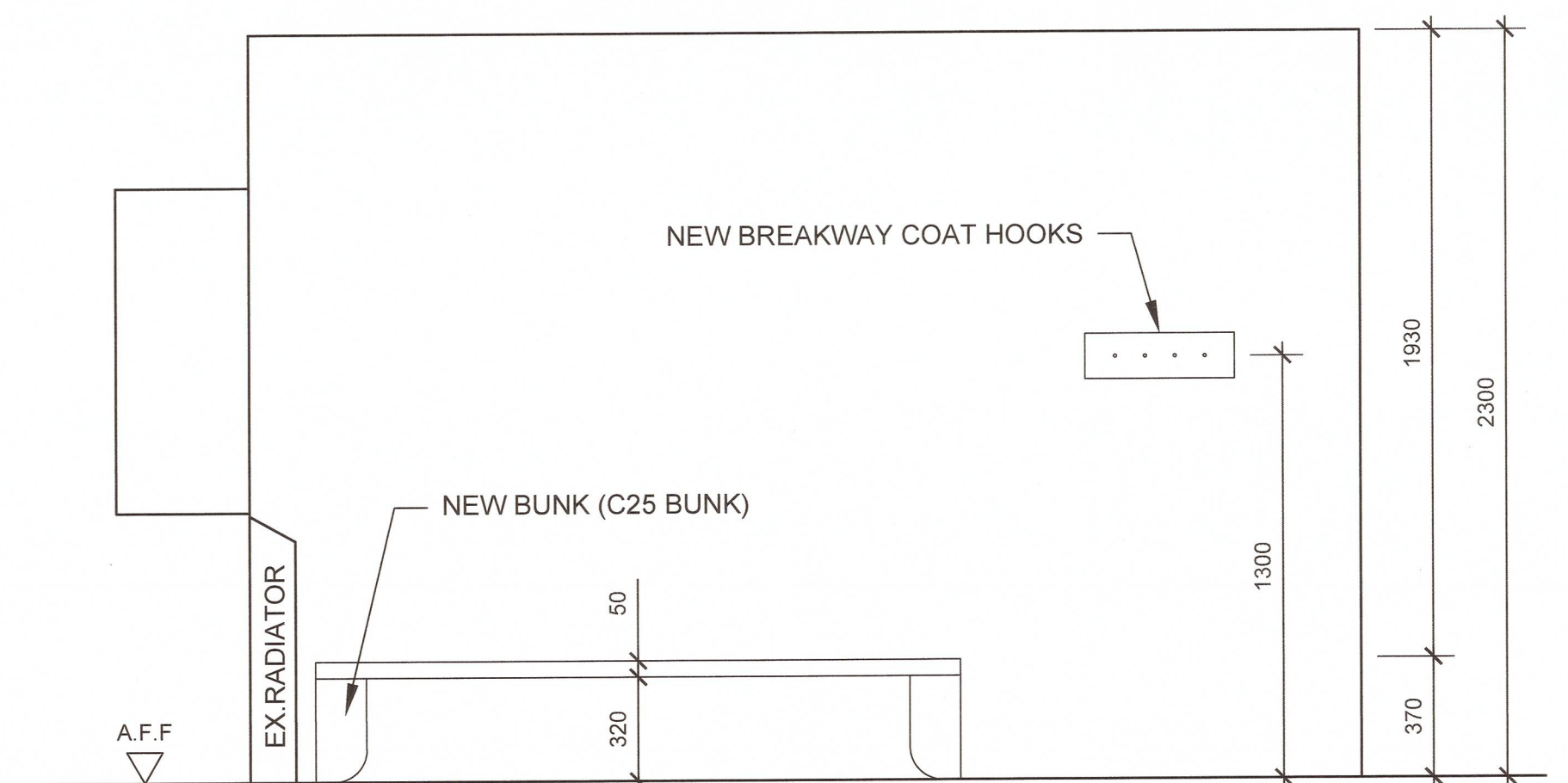
12 EXISTING TYPICAL CELL DEMOLITION PLAN FOR SINGLE BUNK
A02 1:20



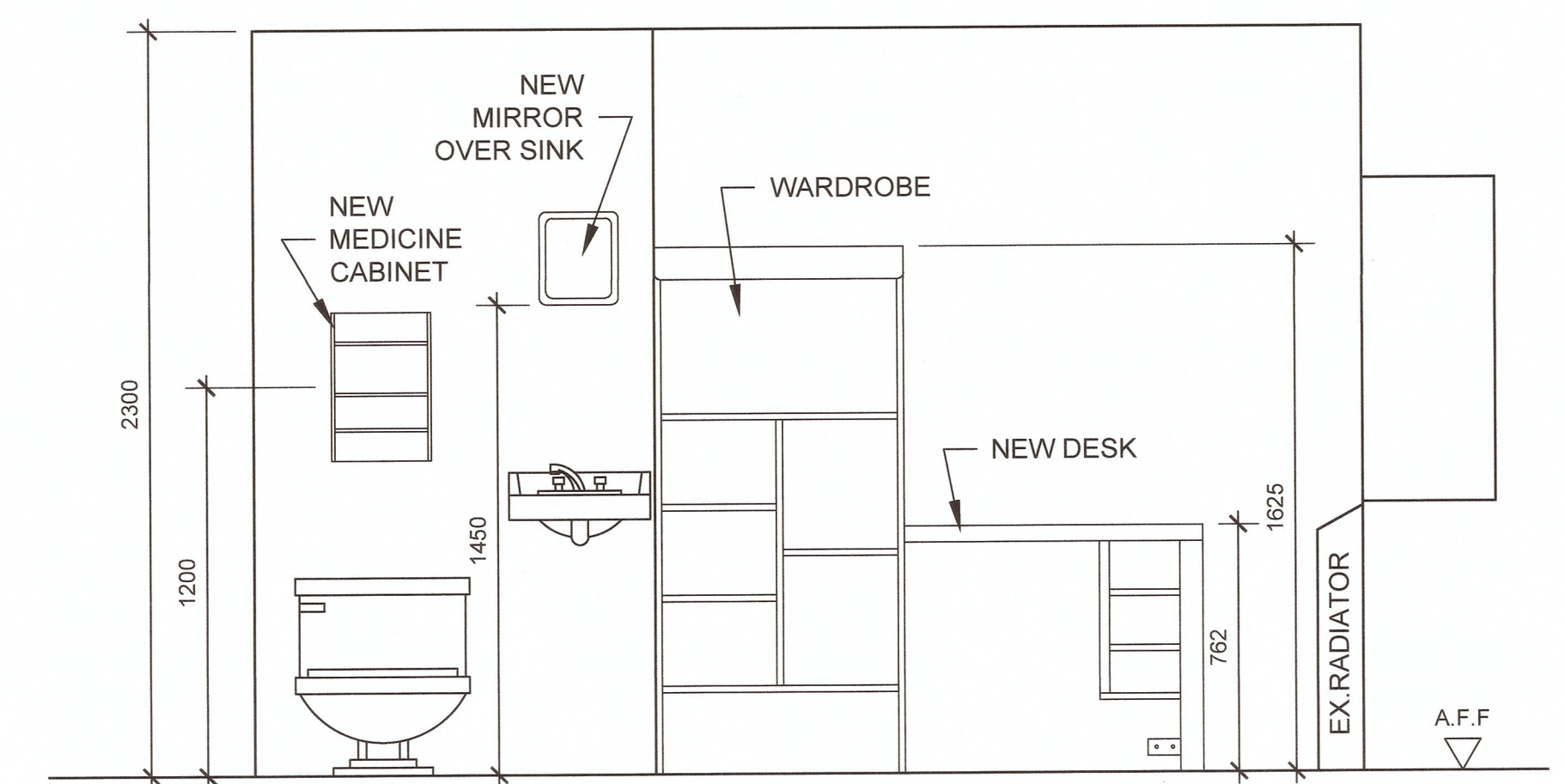
13 EXISTING TYPICAL CELL DEMOLITION PLAN FOR DOUBLE BUNK
A02 1:20



14 NEW TYPICAL CELL FURNITURE PLAN
A02 1:20



15 NEW TYPICAL CELL FURNITURE ELEVATION 1
A02 1:20



16 NEW TYPICAL CELL FURNITURE PLAN ELEVATION 2
A02 1:20

Revision/Revision	Description/Description	Date/Date
1	ISSUED FOR TENDER	2017.03.02
0	ISSUED FOR 99% REVIEW	2017.03.01

CORRECTIONAL SERVICE OF CANADA

Project title/Titre du projet
**8751 Stave Lake Street,
 Mission, British Columbia**

**MISSION MEDIUM INSTITUTION
 CELL FURNITURE
 REPLACEMENT**

Consultant Signature Box Only

Designed by/Concept par
MAX CHENG
 Drawn by/Dessiné par
EUNHA KIM CTA
 PWGSC Project Manager/Administrateur de Projets TPSGC
TONY TANG
 PWGSC, Regional Manager, Architectural and Engineering Services/
 Gestionnaire régional, services d'architecture et de génie, TPSGC
PREETIPAL PAUL

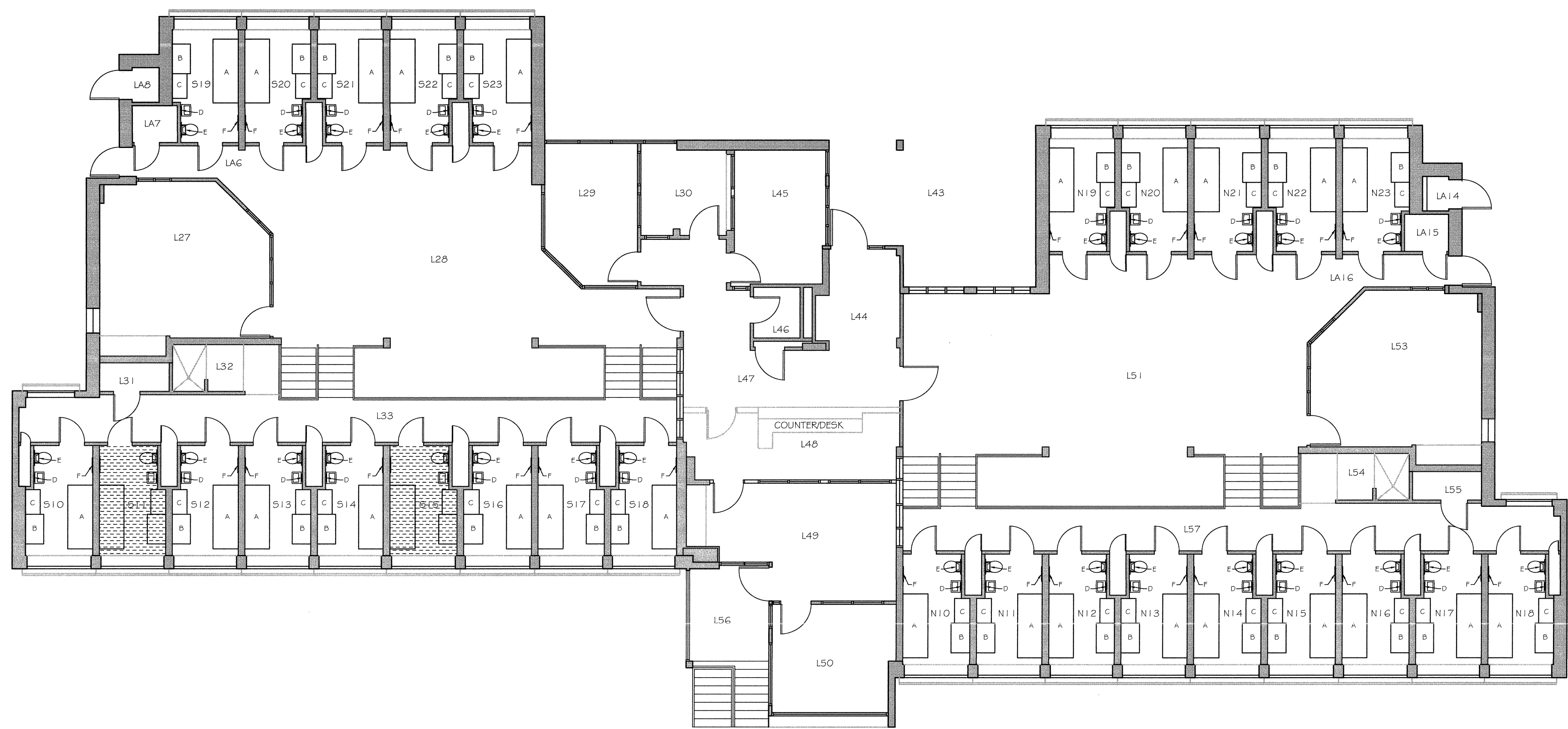
Drawing title/Titre du dessin

**PHOTOS FOR EXISTING CONDITIONS,
 TYPICAL DEMOLITION PLANS,
 NEW TYPICAL CELL FURNITURE
 PLAN & ELEVATIONS**

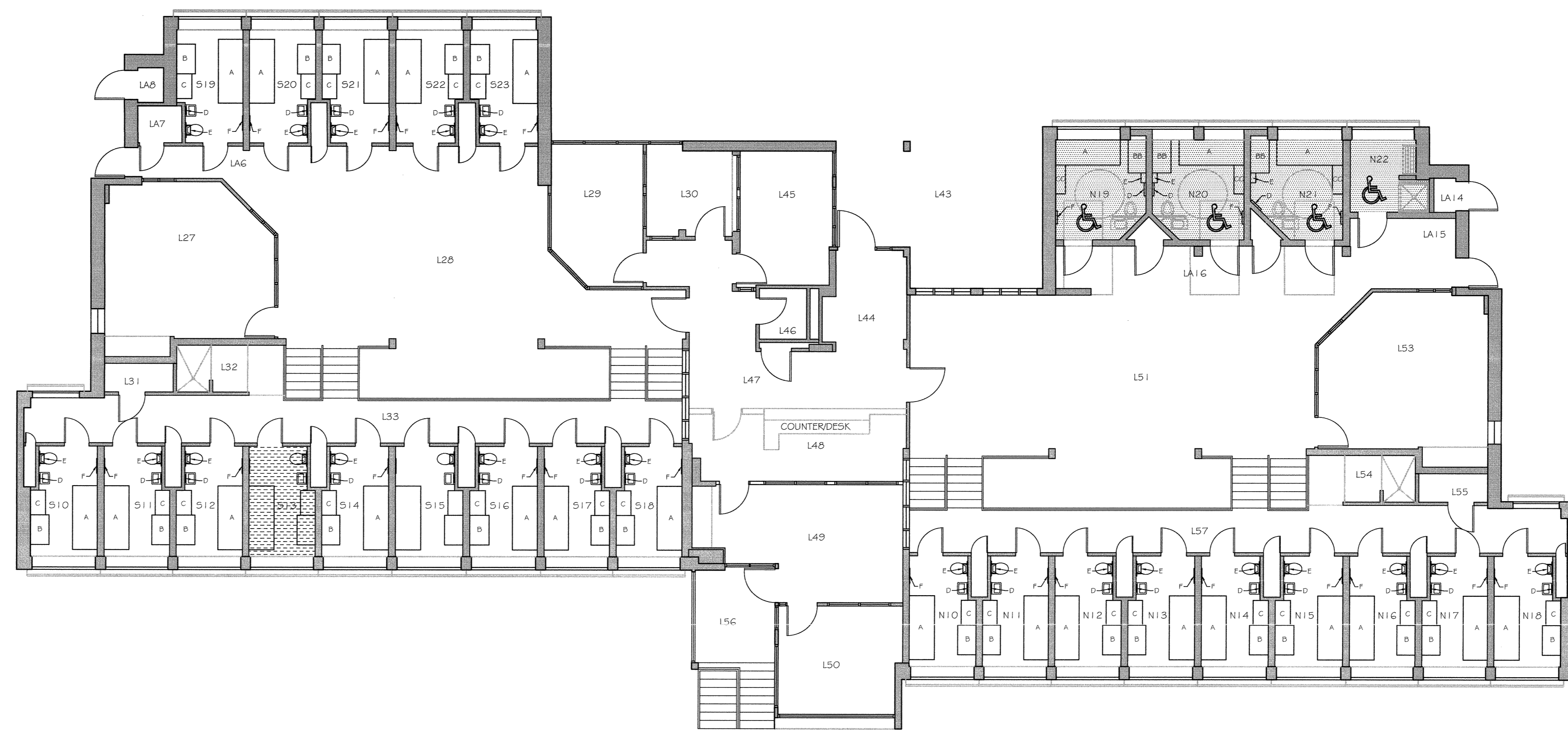
Project No./No. du projet	Sheet/Feuille	Revision no./ La Révision no.
R.082472.001	A02 OF	0



Unit LU1	Area	Description	Area	Count	Area
Douglas Living Unit - Upper Level	147	Electrical Room	21.93	520	Cell
	148	Legend Electrical Room	19.19	521	Cell
	149	Clerk Office	22.25	522	Cell
LA6	150	J.M. Office	13.89	523	Cell
LA7	151	North Lobby	24.64	N10	Cell
LA8	152	N. Common Room	28.41	N11	Cell
LA14	154	Shower	3.45	N12	Cell
LA15	155	Janitor	2.65	N13	Cell
LA16	156	Balcony Ext.		N14	Cell
LA17	157	Common Room	34.61	N15	Cell
LA18	158	South Lobby	22.97	N16	Cell
LA19	159	IPO Office	6.21	N17	Cell
LA20	160	Interview Room	8.45	N18	Cell
LA21	161	Janitor	2.65	N19	Cell
LA22	162	Shower	3.45	N20	Cell
LA23	163	Common Room	34.61	N21	Cell
LA24	164	Covered Entry	5.16	N22	Cell
LA25	165	Main Lobby	7.67	N23	Cell
LA26	166	IPO Office	13.89	S18	Cell
LA27	167	Staff Washroom	3.16	S19	Cell

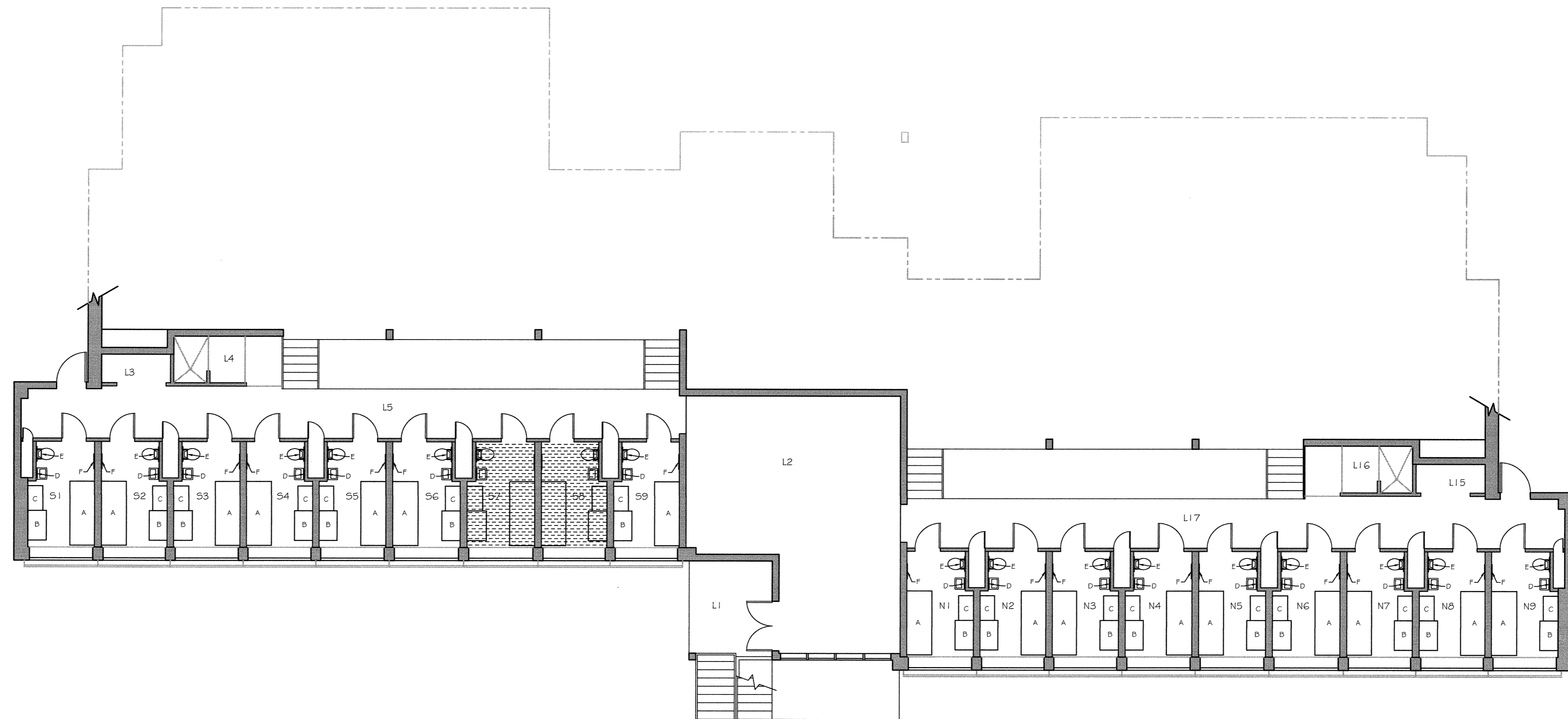


Unit LU2	Room	Area	Room	Area	Room	Area
Oak Living Unit - Upper Level	L46	Staff Washroom	3.16	S1A	Cell	2.21
	L47	Electrical Room	21.93	S19	Cell	6.63
	L48	Open Control Post	15.12	S20	Cell	6.40
L46	Corridor		12.23	S21	Cell	6.40
L47	Storage		13.69	S22	Cell	6.40
L48	Mechanical		24.44	S23	Cell	6.60
LA14	Mechanical		29.41	N10	Cell	6.02
LA15	Storage		5.45	N11	Cell	6.21
LA16	Corridor		2.48	N12	Cell	6.21
L27	S. Common Room		29.41	N13	Cell	6.21
L28	South Lobby		34.61	N14	Cell	6.21
L29	IPO Office		8.97	N15	Cell	6.21
L30	Interview Room		8.21	N16	Cell	6.21
L31	Janitor		8.21	N17	Cell	6.21
L32	Shower		8.21	N18	Cell	6.97
L33	Corridor		5.21	N19	Cell	11.32
L43	Covered Entry		8.21	N20	Cell	10.27
L44	Main Lobby		2.21	N21	Cell	3.71
L45	IPO Office		6.21	N22	Cell B.F. Inmate Washroom	7.02



LU-2 BLDG. MAIN FLOOR PLAN
SCALE 1:100
NUMBER OF NEW BEDS : 22ea

Unit LU2	Room	Area	Room	Area	Room	Area
Oak Living Unit - Lower Level	S9	Cell	7.93			
	S9	Cell	7.93			
L1	Covered Entry		L15	Laundry		2.94
L2	Mechanical Room	48.04	L17	Corridor		37.22
L3	Janitor		N1	Cell		7.93
L4	Shower	5.26	N2	Cell		7.93
L5	Corridor	37.22	N3	Cell		7.93
S11	Cell	6.69	N4	Cell		7.93
S2	Cell	7.93	N5	Cell		7.93
S3	Cell	7.93	N6	Cell		7.93
S4	Cell	7.93	N7	Cell		7.93
S5	Cell	7.93	N8	Cell		7.93
S6	Cell	7.93	N9	Cell		8.62
S7	Cell	7.93				



LU-2 BLDG. LOWER FLOOR PLAN
SCALE 1:100
NUMBER OF NEW BEDS : 16ea

LEGEND

A : NEW BUNK
 B : NEW DESK
 BB : NEW ACCESSIBLE DESK
 C : NEW WARDROBE
 CC : NEW ACCESSIBLE WARDROBE
 D : NEW MIRROR
 E : NEW MEDICINE CABINET
 F : NEW BREAKWAY COAT HOOKS

EXISTING DOUBLE BUNKS CELL (REMOVE AND DISPOSE UPPER BUNK AND LADDER, BUT LOWER BUNK TO REMAIN. ALL OTHER FURNITURE TO REMAIN. NO NEW FURNITURE FOR THESE ROOMS.)

ACCESSIBLE CELLS

Revision/Revisión	Description/Description	Date/Date
1	ISSUED FOR TENDER	2017-03-27
2		
3		
4		
5		
6	ISSUED FOR 90% REVIEW	2017-03-09

Client/Client: **CORRECTIONAL SERVICE OF CANADA**

Project Title/Titre du projet: **8751 Stave Lake Street, Mission, British Columbia**
MISSION MEDIUM INSTITUTION CELL FURNITURE REPLACEMENT

Consultant Signature Box Only

Designed by/Concept par: **MAX CHENG**

Drawn by/Dessiné par: **EUNHA KIM CTA**

PWSSC Project Manager/Administrateur de Projets TPSC: **TONY TANG**

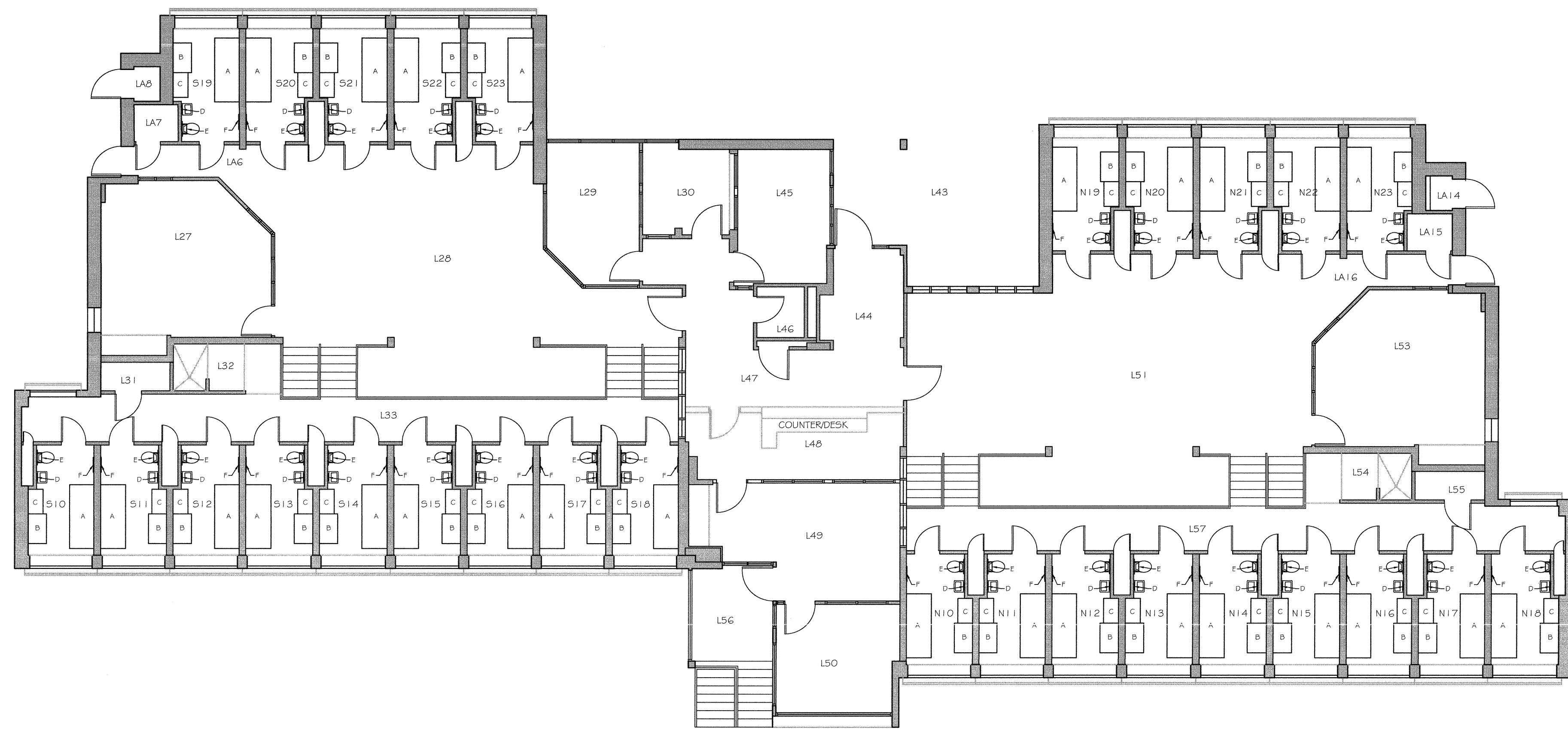
PWSSC Regional Manager, Architectural and Engineering Services/Gestionnaire régionale, Services d'architecture et de génie, TPSC: **PREETIPAL PAUL**

Drawing title/Titre du dessin: **FLOOR PLAN LU-2, OAK LIVING UNIT**

Project No./No. du projet	Sheet/Feuille	Revision no./Lo Révision no.
R.082472.001	A04	0

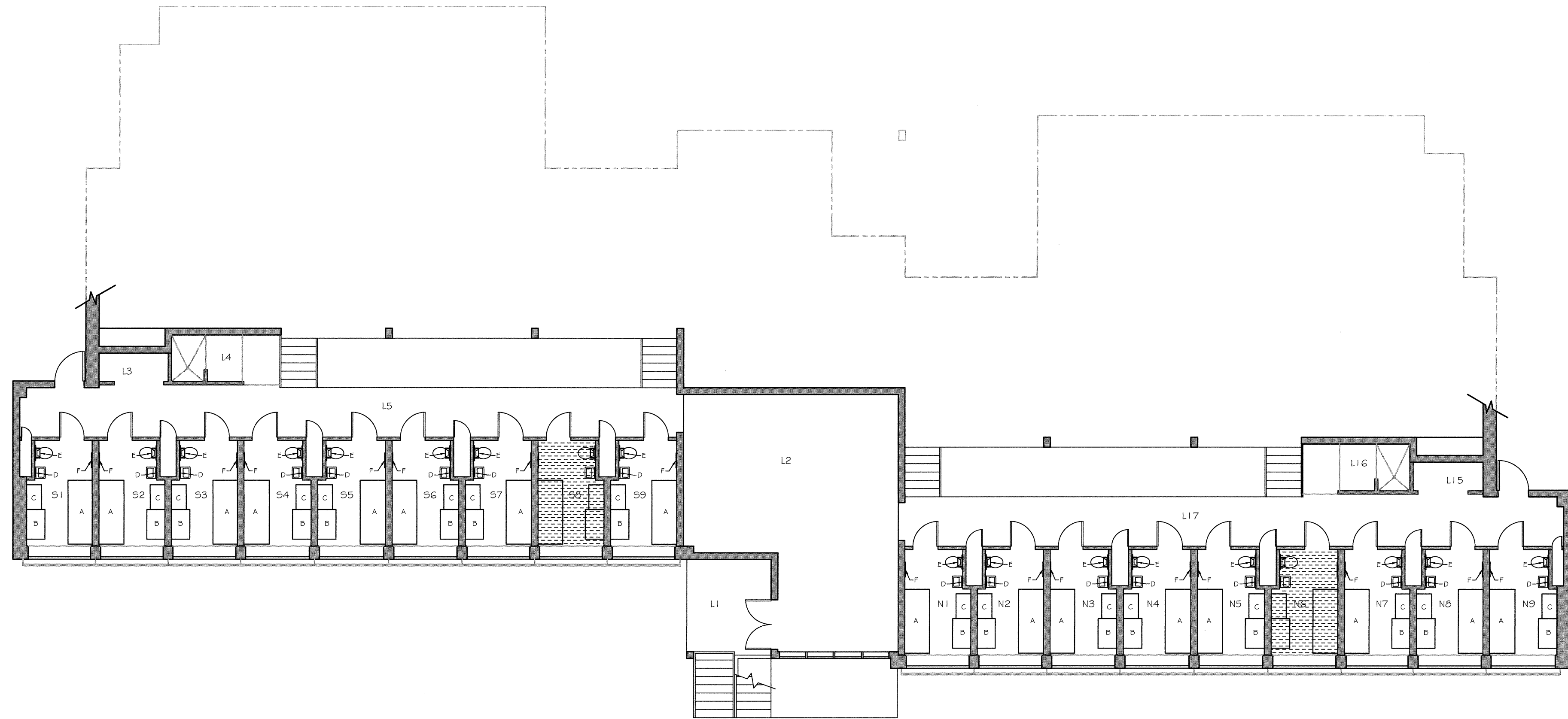


Unit LU3	Area	Room	Area	Room	Area	
Dogwood Living Unit - Upper Level	147	Electrical Room	21.93	S20	Cell	
	148	Open Control Post	15.19	S21	Cell	
	149	Clerk Office	22.35	S22	Cell	
L46	Corridor	L50	ITM Office	13.89	S23	Cell
L47	Storage	L51	North Lobby	64.64	N10	Cell
L48	Mechanical	L53	N. Common Room	28.41	N11	Cell
L49	Mechanical	L54	Shower	2.45	N12	Cell
L49	Mechanical	L55	Janitor	7.48	N13	Cell
L49	Mechanical	L56	Sanitary Ent.		N14	Cell
L49	Mechanical	L57	Corridor	34.61	N15	Cell
L26	South Lobby	S10	Cell	2.97	N16	Cell
L28	ITM Office	S11	Cell	2.21	N17	Cell
L30	Interview Room	S12	Cell	2.21	N18	Cell
L31	Janitor	S13	Cell	2.21	N19	Cell
L32	Shower	S14	Cell	2.21	N20	Cell
L33	Corridor	S15	Cell	2.21	N21	Cell
L43	Covered Entry	S16	Cell	2.21	N22	Cell
L44	Main Lobby	S17	Cell	2.21	N23	Cell
L45	PO Office	S18	Cell	2.21		
L46	Staff Washroom	S19	Cell	2.63		



LU-3 BLDG. MAIN FLOOR PLAN
SCALE 1:100
NUMBER OF NEW BEDS : 28ea

Unit LU3	Area	Room	Area	Room	Area
Dogwood Living Unit - Lower Level	S5	Cell	7.93		
	S9	Cell	7.93		
	L15	Wardrobe	2.84		
L11	Covered Entry	L16	Shower	5.96	
L12	Mechanical Room	L17	Corridor	37.22	
L3	Laundry	N1	Cell	7.93	
L4	Shower	N2	Cell	7.93	
L5	Corridor	N3	Cell	7.93	
S1	Cell	N4	Cell	7.93	
S2	Cell	N5	Cell	7.93	
S3	Cell	N6	Cell	7.93	
S4	Cell	N7	Cell	7.93	
S5	Cell	N8	Cell	7.93	
S6	Cell	N9	Cell	6.69	
S7	Cell				



LU-3 BLDG. LOWER FLOOR PLAN
SCALE 1:100
NUMBER OF NEW BEDS : 16ea

LEGEND
 A : NEW BUNK
 B : NEW DESK
 C : NEW WARDROBE
 D : NEW MIRROR OVER SINK
 E : NEW MEDICINE CABINET
 F : NEW BREAKWAY COAT HOOKS
 EXISTING DOUBLE BUNKS CELL (REMOVE AND DISPOSE UPPER BUNK AND LADDER, BUT LOWER BUNK TO REMAIN. ALL OTHER FURNITURE TO REMAIN. NO NEW FURNITURE FOR THESE ROOMS.)

Revision/Modification	Description/Description	Date/Date
1	ISSUED FOR TENDER	2017.03.22
2	ISSUED FOR RFP REVIEW	2017.03.29

Client/client
CORRECTIONAL SERVICE OF CANADA

Project title/Titre du projet
8751 Stave Lake Street, Mission, British Columbia

MISSION MEDIUM INSTITUTION CELL FURNITURE REPLACEMENT

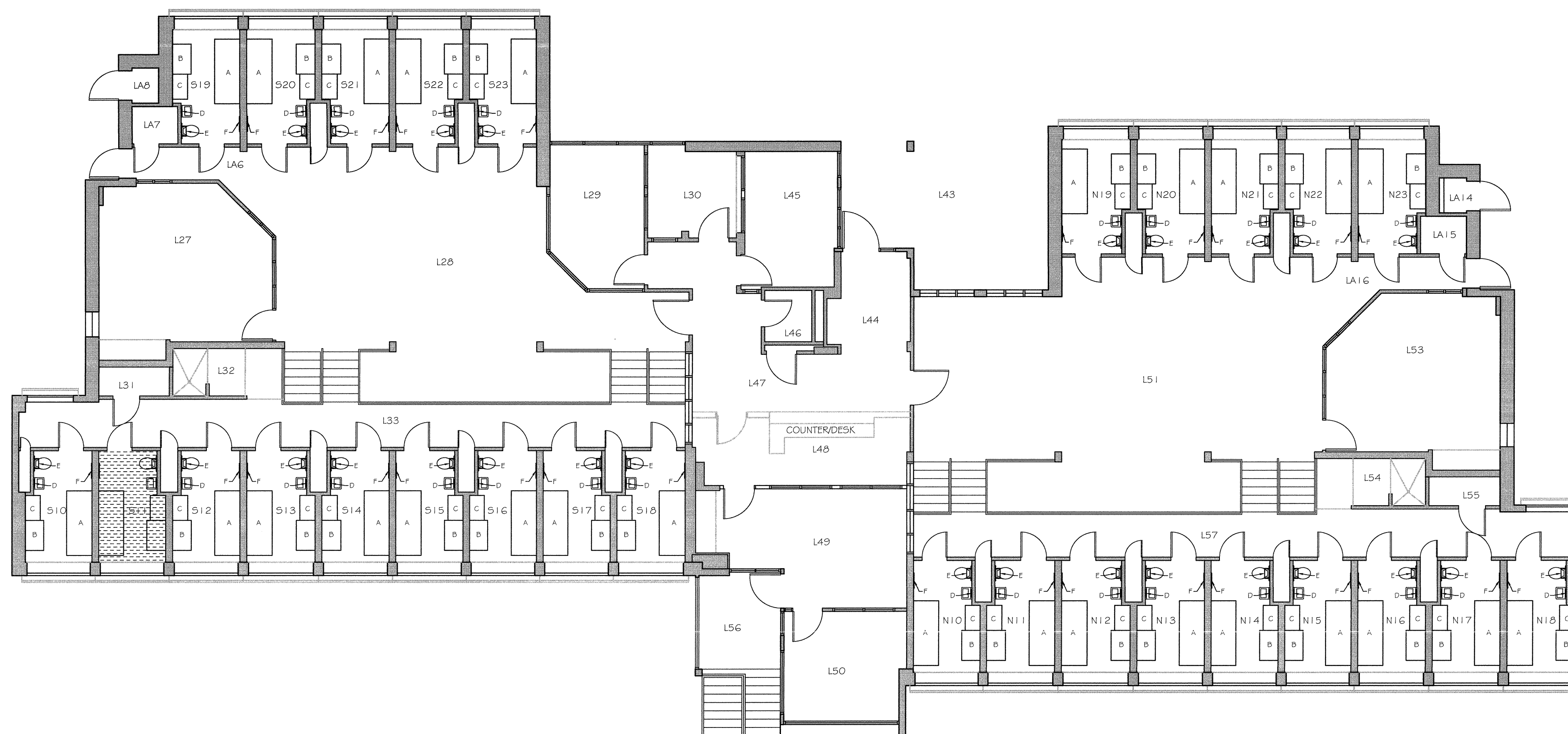
Consultant Signature Box Only
 Designed by/Concept par
MAX CHENG
 Drawn by/Dessiné par
EUNHA KIM CTA
 PWOSC Project Manager/Administrateur de Projets TPSGC
TONY TANG
 PWOSC Regional Manager, Architectural and Engineering Services / Gestionnaire Régionale, Services d'architecture et de génie, TPSGC
PREETIPAL PAUL

Drawing title/Titre du dessin
FLOOR PLAN LU-3, DOGWOOD LIVING UNIT

Project No./No. du projet R.082472.001	Sheet/Feuille A05 OF	Revision no./La Révision no. 0
--	-----------------------------------	--

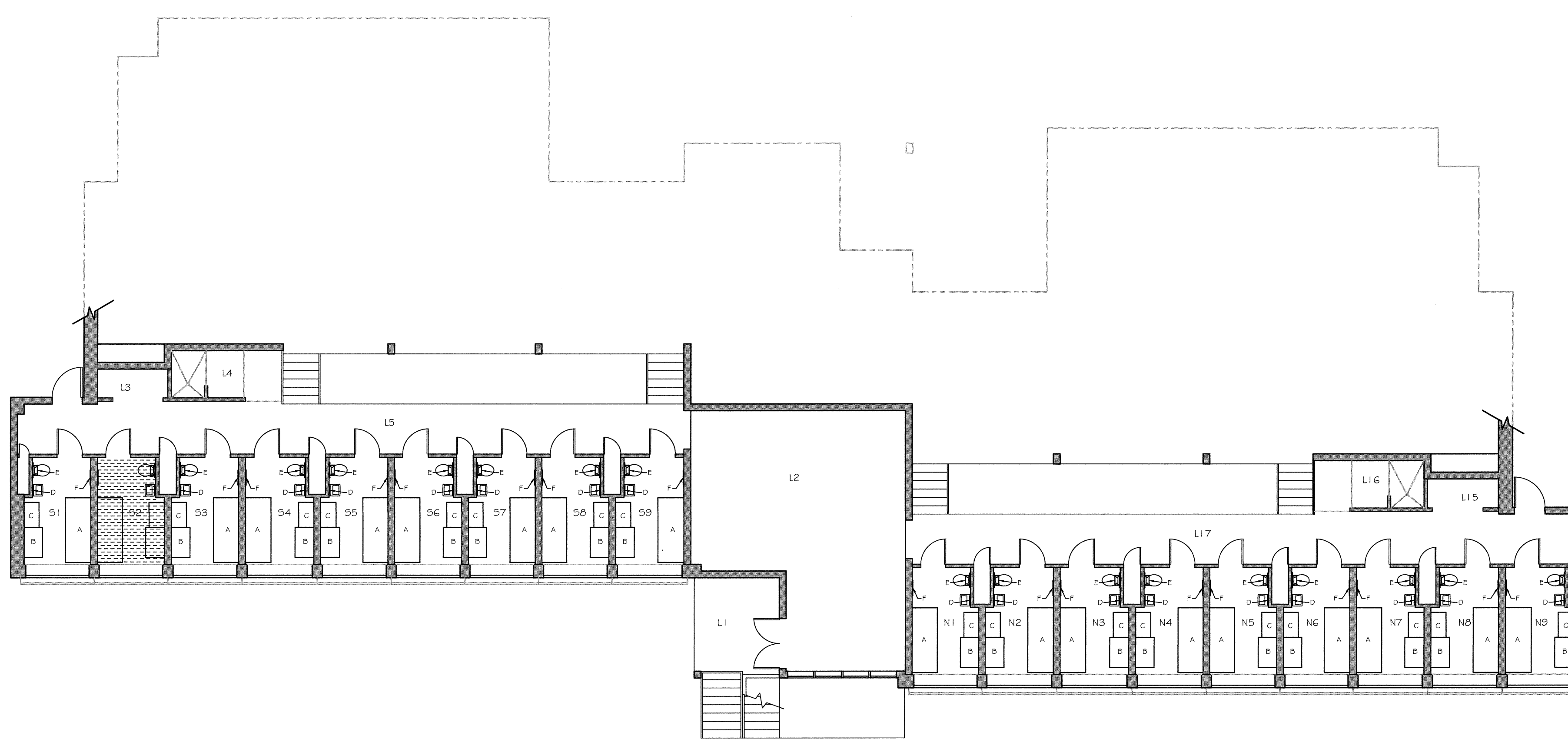


Unit LU4	Room	Area	Room	Area	Room	Area		
Mission Living Unit - Upper Level	L47	Electrical Room	21.93	S20	Cell	8.40		
	L48	Open Control Post	13.19	S21	Cell	8.40		
	L49	Clerk Office	22.25	S22	Cell	8.40		
L46	Corridor	19.91	L50	U/M Office	13.09	S23	Cell	9.60
L47	Storage	2.27	L51	North Lobby	84.64	N10	Cell	8.02
L48	Mechanical	2.48	L53	N. Common Room	28.41	N11	Cell	8.21
LA14	Mechanical	2.48	L54	Shower	2.45	N12	Cell	8.21
LA15	Storage	2.27	L55	Janitor	2.48	N13	Cell	8.21
LA16	Corridor	13.91	L56	Balcony Exit		N14	Cell	8.21
L27	St. Common Room	29.42	L57	Corridor	34.61	N15	Cell	8.21
L28	South Lobby	71.56	S10	Cell	8.97	N16	Cell	8.21
L29	IFO Office	12.62	S11	Cell	8.21	N17	Cell	8.21
L30	Interview Room	9.45	S12	Cell	8.21	N18	Cell	8.97
L31	Janitor	2.68	S13	Cell	8.21	N19	Cell	9.60
L32	Shower	3.45	S14	Cell	8.21	N20	Cell	8.40
L33	Corridor	31.63	S15	Cell	8.21	N21	Cell	8.40
L43	Covered Entry	7.17	S16	Cell	8.21	N22	Cell	8.40
L44	IFO Office	13.60	S18	Cell	8.21	N23	Cell	8.40
L45	IFO Office	13.60	S19	Cell	8.21			
L46	Staff Washroom	3.16	S19	Cell	8.63			

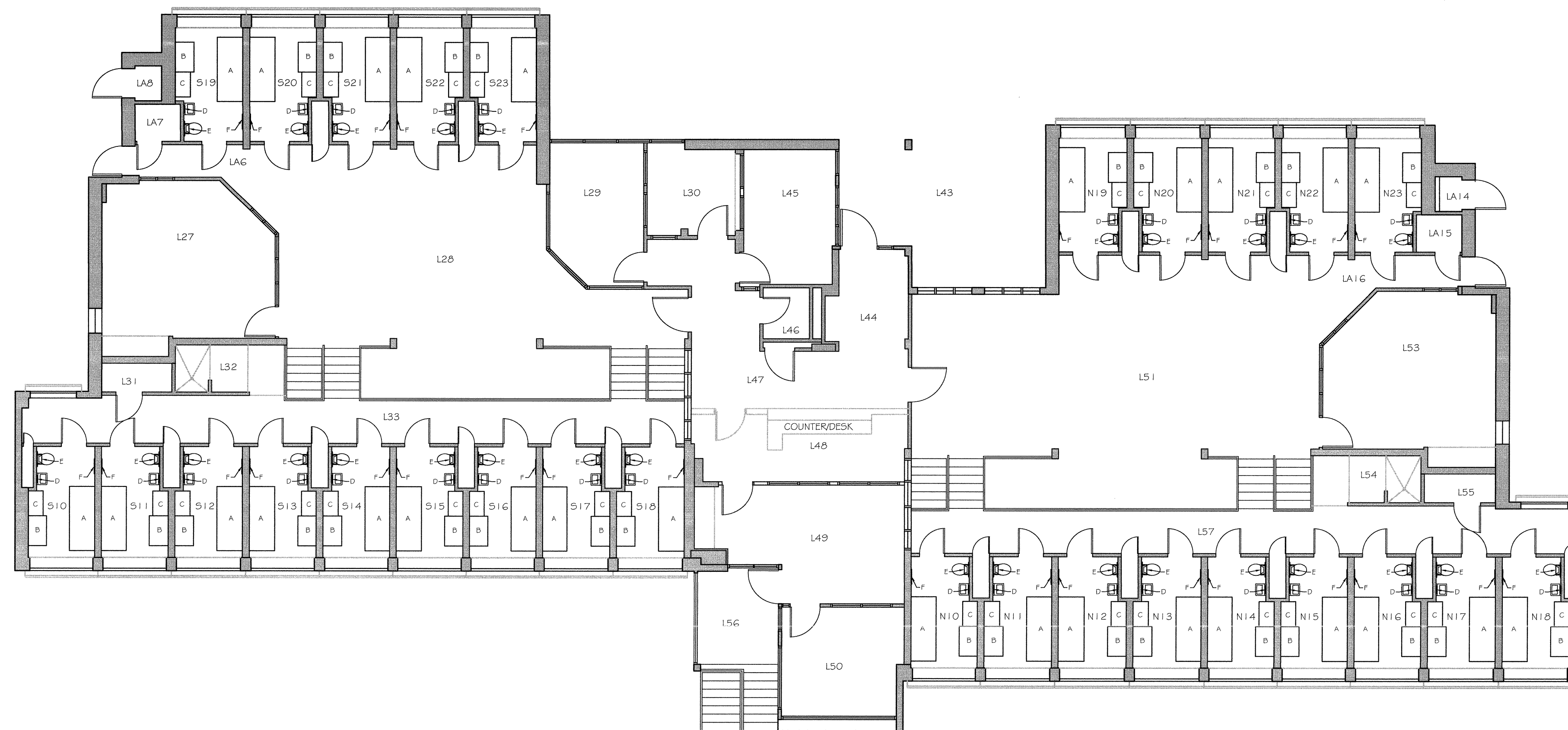


LU-4 BLDG. MAIN FLOOR PLAN
SCALE 1:100 NUMBER OF NEW BEDS : 27ea

Unit LU4	Room	Area	Room	Area	Room	Area
Mission Living Unit - Lower Level	S0	Cell	7.93			
	S9	Cell	7.93			
	S15	Stairway	2.84			
L1	Covered Entry	11.6	L16	Shower	5.26	
L2	Mechanical Room	48.04	L17	Corridor	37.22	
L3	Stairway	7.94	N1	Cell	7.93	
L4	Shower	5.26	N2	Cell	7.93	
L5	Corridor	37.22	N3	Cell	7.93	
S1	Cell	8.09	N4	Cell	7.93	
S2	Cell	7.93	N5	Cell	7.93	
S3	Cell	7.93	N6	Cell	7.93	
S4	Cell	7.93	N7	Cell	7.93	
S5	Cell	7.93	N8	Cell	7.93	
S6	Cell	7.93	N9	Cell	8.69	
S7	Cell	7.93				

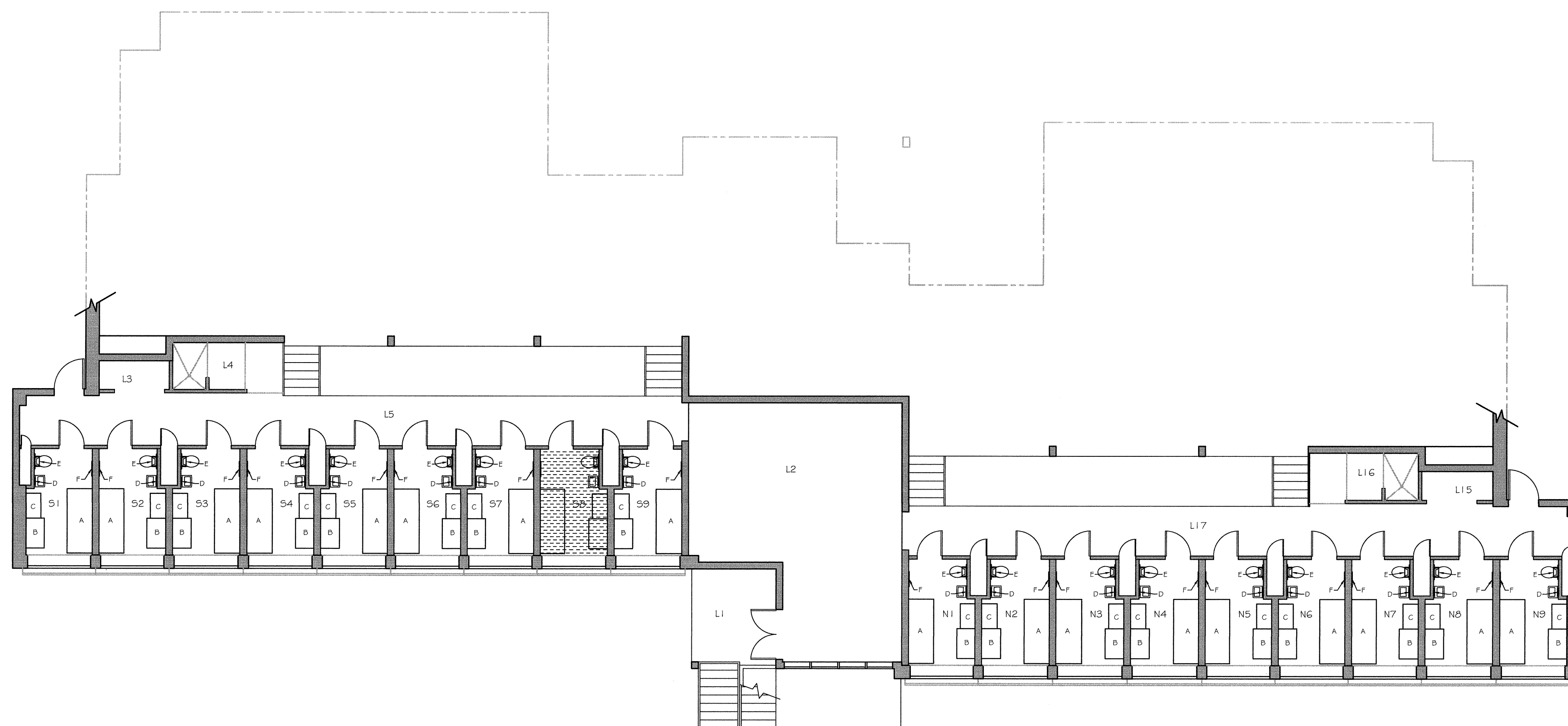


Unit LU5				
Valley Living Unit - Upper Level				
No. #	Name	Area m ²	Area ft ²	Remarks
L26	Corridor	15.21	150	LU M Office
L27	Storage	2.27	15.1	North Lobby
L28	Mechanical	2.48	15.3	N. Common Room
L29	Mechanical	2.48	15.4	Showers
L30	Storage	2.27	15.5	Janitor
L31	Corridor	15.81	156	Balcony Exit
L32	Sp. Common Room	28.72	157	Corridor
L33	South Lobby	71.56	310	Cell
L34	ITD Office	2.62	31.1	Cell
L35	Interview Room	8.45	31.2	Cell
L36	Janitor	2.68	31.3	Cell
L37	Showers	7.93	31.4	Cell
L38	Corridor	34.08	31.5	Cell
L39	Covered Entry	31.16	Cell	
L40	Main Lobby	7.27	31.7	Cell
L41	ITD Office	1.60	31.8	Cell
L42	Staff Washroom	5.16	31.9	Cell



LU-5 BLDG. MAIN FLOOR PLAN
SCALE 1:100 NUMBER OF NEW BEDS : 28ea

Unit LU5				
Valley Living Unit - Lower Level				
No. #	Name	Area m ²	Area ft ²	Remarks
L1	Covered Entry	46.04	L1.5	Laundry
L2	Mechanical Room	46.04	L1.7	Corridor
L3	Laundry	5.26	N1	Cell
L4	Showers	5.26	N2	Cell
L5	Corridor	37.22	N3	Cell
S1	Cell	6.68	N4	Cell
S2	Cell	7.93	N5	Cell
S3	Cell	7.93	N6	Cell
S4	Cell	7.93	N7	Cell
S5	Cell	7.93	N8	Cell
S6	Cell	7.93	N9	Cell
S7	Cell	7.93		



LU-5 BLDG. LOWER FLOOR PLAN
SCALE 1:100 NUMBER OF NEW BEDS : 17ea

LEGEND

- A : NEW BUNK
- B : NEW DESK
- C : NEW WARDROBE
- D : NEW MIRROR OVER SINK
- E : NEW MEDICINE CABINET
- F : NEW BREAKWAY COAT HOOKS
- EXISTING DOUBLE BUNKS CELL (REMOVE AND DISPOSE UPPER BUNK AND LADDER, BUT LOWER BUNK TO REMAIN. ALL OTHER FURNITURE TO REMAIN. NO NEW FURNITURE FOR THESE ROOMS.)

Revision/Revisión	Description/Description	Date/Date
1		
2		
3		
4		
5		
6		
7		
8		
9		
10		
11	ISSUED FOR TENDER	2017.03.22
12	ISSUED FOR 90% REVIEW	2017.03.29

CORRECTIONAL SERVICE OF CANADA

Project title/Titre du projet
8751 Stave Lake Street, Mission, British Columbia

MISSION MEDIUM INSTITUTION CELL FURNITURE REPLACEMENT

Consultant Signature Box Only

Designed by/Concept par
MAX CHENG

Drawn by/Dessiné par
EUNHA KIM CTA

PWGSC Project Manager/Administrateur de Projets TPSC
TONY TANG

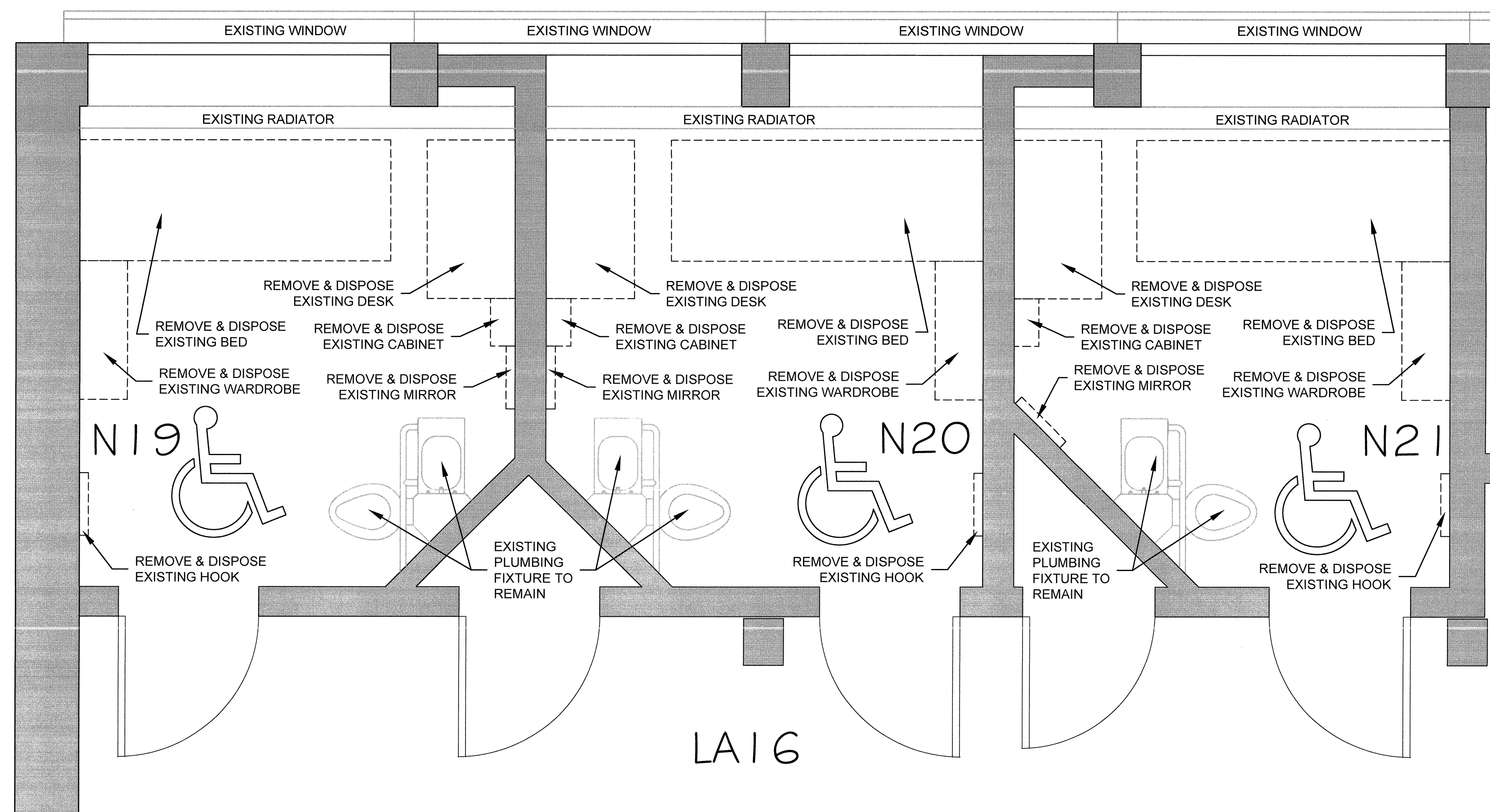
PWGSC Regional Manager, Architectural and Engineering Services/
Gestionnaire régional, Services d'architecture et de génie, TPSC
PREETIPAL PAUL

Drawing title/Titre du dessin

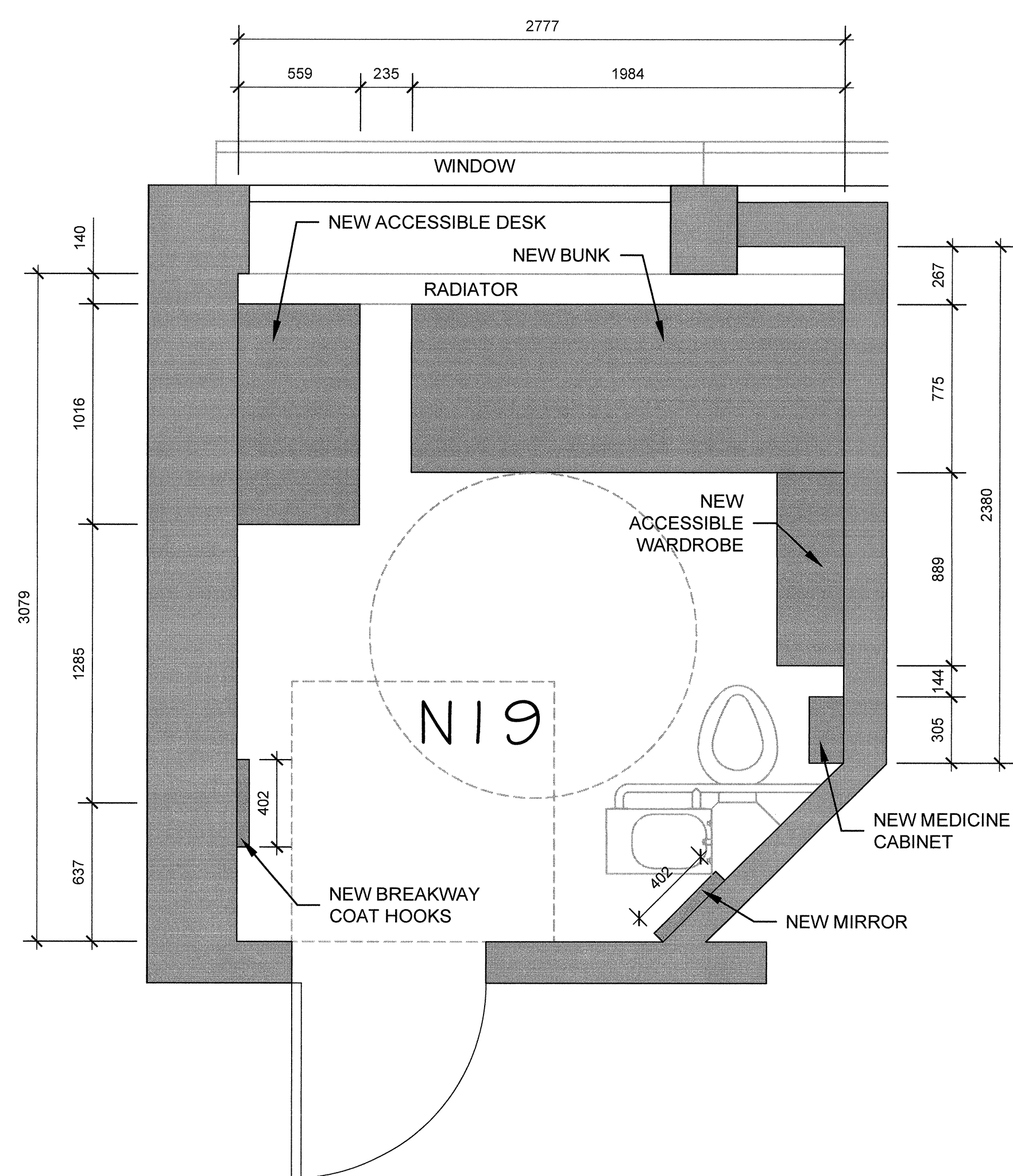
FLOOR PLAN LU-5, VALLEY LIVING UNIT

Project No./No. du projet R.082472.001	Sheet/Feuille A07 OF	Revision no./La Révision no. 0
---	----------------------------	-----------------------------------

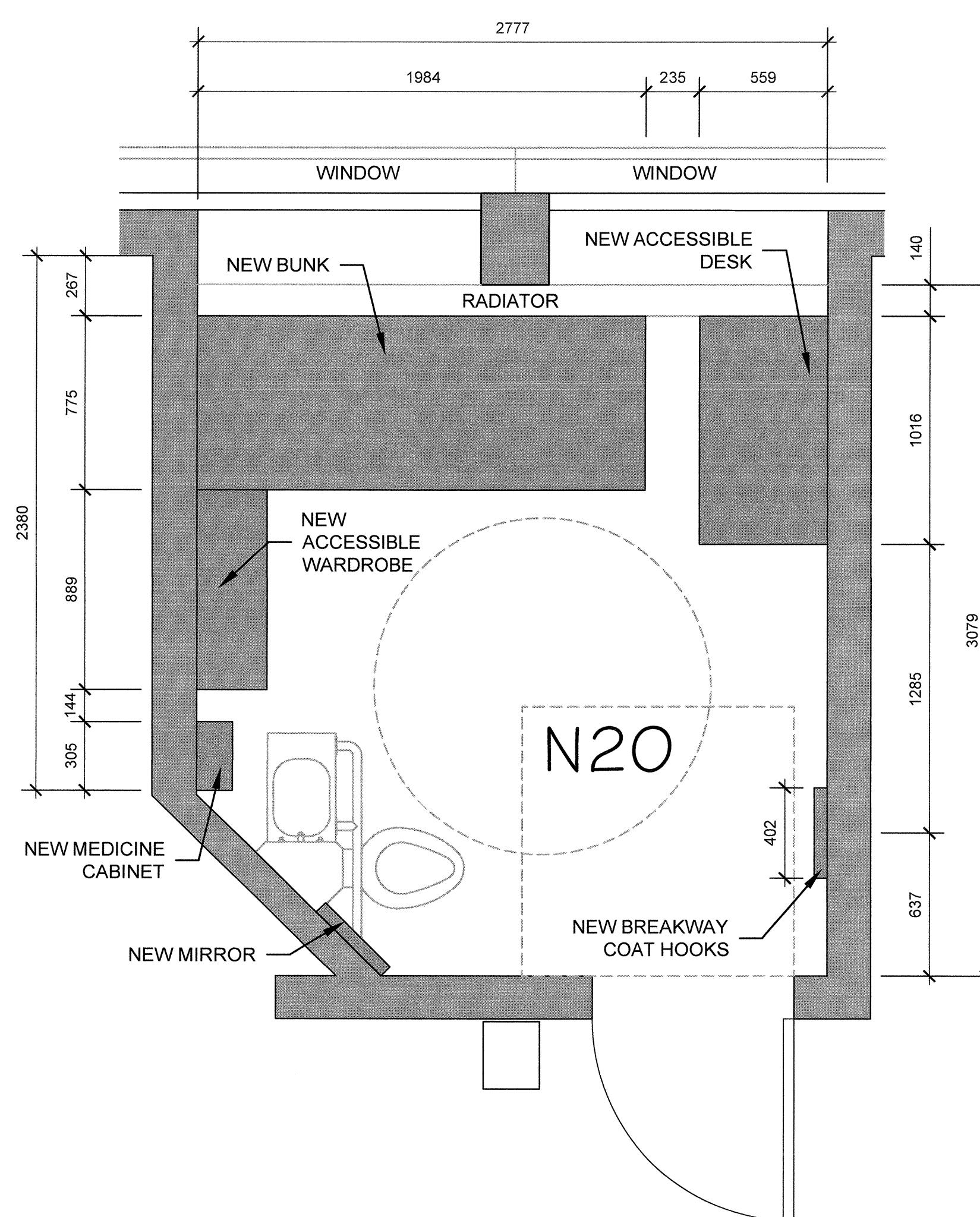




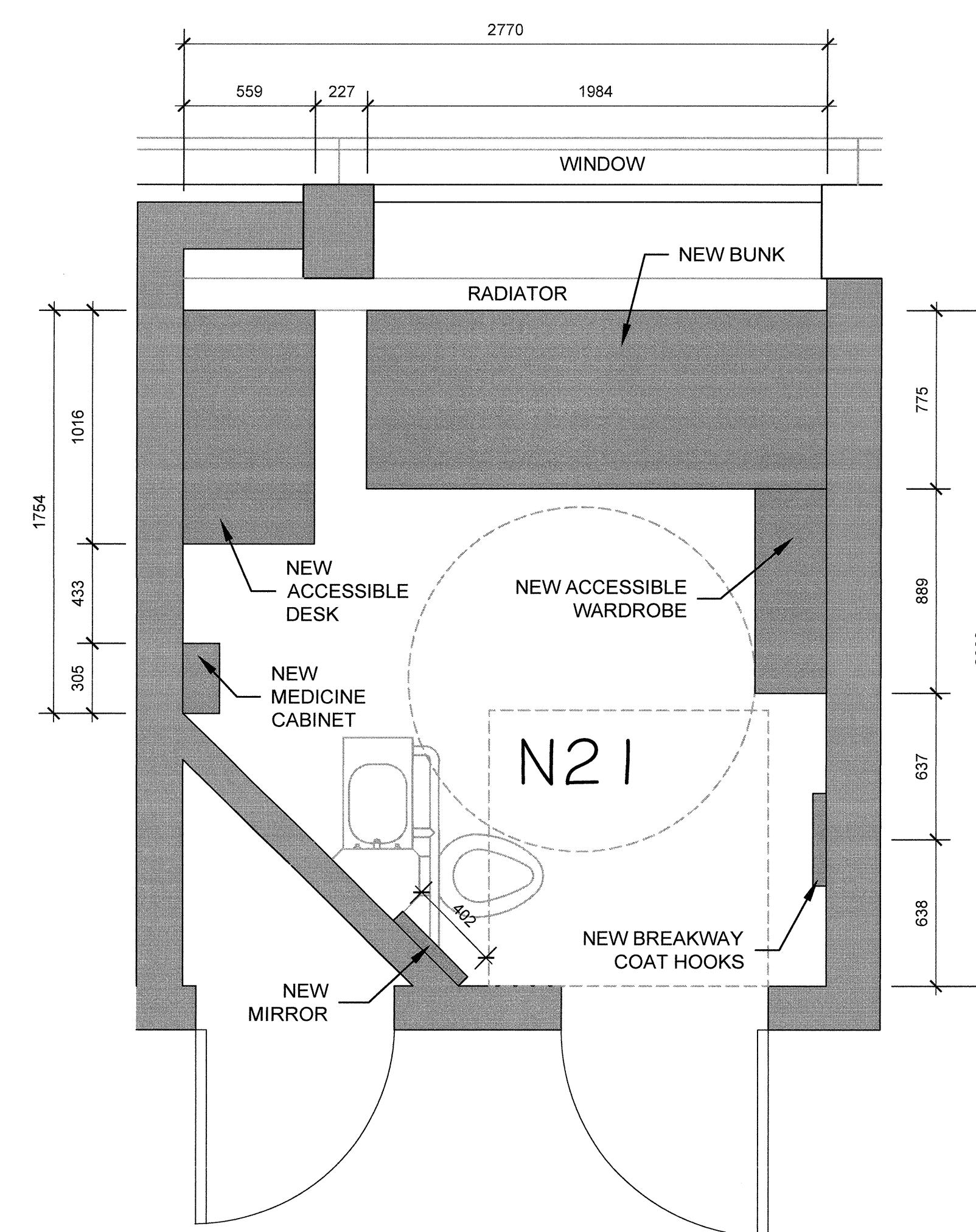
1 ACCESSIBLE UNIT DEMOLITION PLAN
A08 1:20



2 ACCESSIBLE UNIT N19 NEW FURNITURE PLAN
A08 1:20



3 ACCESSIBLE UNIT N20 NEW FURNITURE PLAN
A08 1:20



4 ACCESSIBLE UNIT N21 NEW FURNITURE PLAN
A08 1:20

Revision/Revision	Description/Description	Date/Date
0	ISSUED FOR TENDER	05/17/03

Client/Client

CORRECTIONAL SERVICE OF CANADA

Project title/Titre du projet
8751 Stave Lake Street, Mission, British Columbia

MISSION MEDIUM INSTITUTION CELL FURNITURE REPLACEMENT

Consultant Signature Box Only

Designed by/Concept par
MAX CHENG

Drawn by/Dessiné par
EUNHA KIM CTA

PWSSC Project Manager/Administrateur de Projets TPSSC
TONY TANG

PWSSC Regional Manager, Architectural and Engineering Services/
Gestionnaire régional, Services d'architecture et de génie, TPSSC
PREETIPAL PAUL

Drawing title/Titre du dessin

ACCESSIBLE UNIT DEMOLITION PLAN AND NEW FURNITURE PLAN

Project No./No. du projet
R.082472.001

Sheet/Feuille
A08
OF

Revision no./
La Révision no.
0

