



**RETURN BIDS TO:**  
**RETOURNER LES SOUMISSIONS À:**  
**Bid Receiving Public Works and Government**  
**Services Canada/Réception des soumissions Travaux**  
**publics et Services gouvernementaux Canada**  
**800 Burrard Street, Room 219**  
**800, rue Burrard, pièce 219**  
**Vancouver**  
**British Columbia**  
**V6Z 0B9**  
**Bid Fax: (604) 775-9381**

## **SOLICITATION AMENDMENT**

## **MODIFICATION DE L'INVITATION**

The referenced document is hereby revised; unless otherwise indicated, all other terms and conditions of the Solicitation remain the same.

Ce document est par la présente révisé; sauf indication contraire, les modalités de l'invitation demeurent les mêmes.

### **Comments - Commentaires**

**Vendor/Firm Name and Address**  
**Raison sociale et adresse du**  
**fournisseur/de l'entrepreneur**

**Issuing Office - Bureau de distribution**  
Public Works and Government Services Canada -  
Pacific Region  
800 Burrard Street, Room 219  
800, rue Burrard, pièce 219  
Vancouver  
British C  
V6Z 0B9

<b>Title - Sujet</b> Cell Furniture Replacement, LU 1-5	
<b>Solicitation No. - N° de l'invitation</b> EZ899-180014/A	<b>Amendment No. - N° modif.</b> 001
<b>Client Reference No. - N° de référence du client</b>	<b>Date</b> 2017-05-02
<b>GETS Reference No. - N° de référence de SEAG</b> PW-\$PWY-031-8041	
<b>File No. - N° de dossier</b> PWY-7-40002 (031)	<b>CCC No./N° CCC - FMS No./N° VME</b>
<b>Solicitation Closes - L'invitation prend fin</b> <b>at - à 02:00 PM</b> <b>on - le 2017-05-11</b>	<b>Time Zone</b> <b>Fuseau horaire</b> Pacific Daylight Saving Time PDT
<b>F.O.B. - F.A.B.</b> <b>Plant-Usine:</b> <input type="checkbox"/> <b>Destination:</b> <input checked="" type="checkbox"/> <b>Other-Autre:</b> <input type="checkbox"/>	
<b>Address Enquiries to: - Adresser toutes questions à:</b> Leung, Janie	<b>Buyer Id - Id de l'acheteur</b> pwy031
<b>Telephone No. - N° de téléphone</b> (604) 666-8228 ( )	<b>FAX No. - N° de FAX</b> (604) 775-6633
<b>Destination - of Goods, Services, and Construction:</b> <b>Destination - des biens, services et construction:</b> CSC - Mission Institution - Mission, BC	

**Instructions: See Herein**

**Instructions: Voir aux présentes**

<b>Delivery Required - Livraison exigée</b>	<b>Delivery Offered - Livraison proposée</b>
<b>Vendor/Firm Name and Address</b> <b>Raison sociale et adresse du fournisseur/de l'entrepreneur</b>	
<b>Telephone No. - N° de téléphone</b> <b>Facsimile No. - N° de télécopieur</b>	
<b>Name and title of person authorized to sign on behalf of Vendor/Firm</b> <b>(type or print)</b> <b>Nom et titre de la personne autorisée à signer au nom du fournisseur/</b> <b>de l'entrepreneur (taper ou écrire en caractères d'imprimerie)</b>	
<b>Signature</b>	<b>Date</b>

**Les documents français seront disponibles sur demande.**

This Amendment #001 is raised to post the site visit attendee list, to address questions, and to issue Addendum #1.

**Site Visit Attendees**

Gerry Enns Contracting Ltd.  
Boston Construction Corp.  
Olympic Projects Ltd.  
LC Ltd.  
Schubert Plumbing and Heating Ltd.  
TKL Construction

**Questions and Answers**

**Q1.** Section 07 92 00 Sealants – 2.2 .2 Specifies Pecora Dynapoxy EP-1100. I have been advised by our supplier that Dynapoxy EP-1100 was discontinued a while ago and EP-1200 is its replacement. Is the Percora Dynapoxy EP-1200 acceptable to use as a security sealant?

**A1.** Dynapoxy EP-1200 is acceptable as the replacement for EP-1100.

See attached Addendum #1.

**All other terms and conditions remain unchanged.**

The following changes in the tender documents are effective immediately. This addendum will form part of the contract documents.

**1. Refer to Specification:**

- .1 Section 01 01 50 "General Instructions", page 1 of 18, part 1, General, 1.1 Summary of work, .1 Work covered by Contract Documents: .1 This Contract covers the following work at the Mission Institution, Living Unit (LU) 1 to Living Unit (LU) 5, at 8751 Stave Lake Street, Mission B.C. Replace .4 sentences with follows:

Install new cell furniture in 216 cells in LU1 through LU5 excluding the 10 – C25 cells and mock up cells N3 & N4 in Living Unit #5. The pre-purchased furniture is stored at Matsqui Institution RSD storage complex and Mission Institution material storage area, referring details on ASK- 5 and ASK-6 for building locations and stored furniture quantity. Remove and Reinstall 12 beds in those C25 cells and mock-up cells in Living Unit #5 to 410mm above finished floor to match other typical cell bed height and location as shown on ASK-4. (Reduce the furniture replacement cell from 218 to 216 but raise 12 installed beds height)

- .2 Section 01 01 50 "General Instructions", page 12 of 18, part 1, General, 1.2 Common Products Requirements, .12 Fastening - Furniture:

- .1 Replace .6 sentences with follows:

For beds mounted on reinforced concrete cell demising walls:

Acceptable Product: 10 mm (3/8") dia. Hilti HAS-E anchor rods embedded 75 mm into concrete wall, set in Hilti Hit-HY 200 adhesive.

For Desk/Wardrobe combo at reinforced concrete cell demising walls:

Acceptable Product: 10 mm (3/8") dia. Hilti HAS-E anchor rods embedded 50 mm into concrete wall and floor slab, set in Hilti Hit-HY 200 adhesive.

For medicine cabinet on 90 mm thick concrete masonry block wall:

Acceptable Product: 10 mm (3/8") dia. through-wall bolts.

- .2 Replace .7 sentences with follows:

After installation, tack weld all exposed nuts in-place for security.

- .3 Replace .8 sentences with follows:

Contractor shall submit mounting detail shop drawings for the pre-purchased furniture for Departmental Representative approval before Mock Up installation. (The previous requirement of signed and sealed shop drawings by a BC registered professional engineer is no longer necessary)

- .4 Delete .9 sentence (Letter of Assurance from a BC registered professional engineer is no longer necessary)

- .3 Section 07 92 00 "Sealants", page 3 of 5, part 2 Products, 2.2 Sealant Material Designations, .2 Acceptable Product, Replace the sentence with follows:

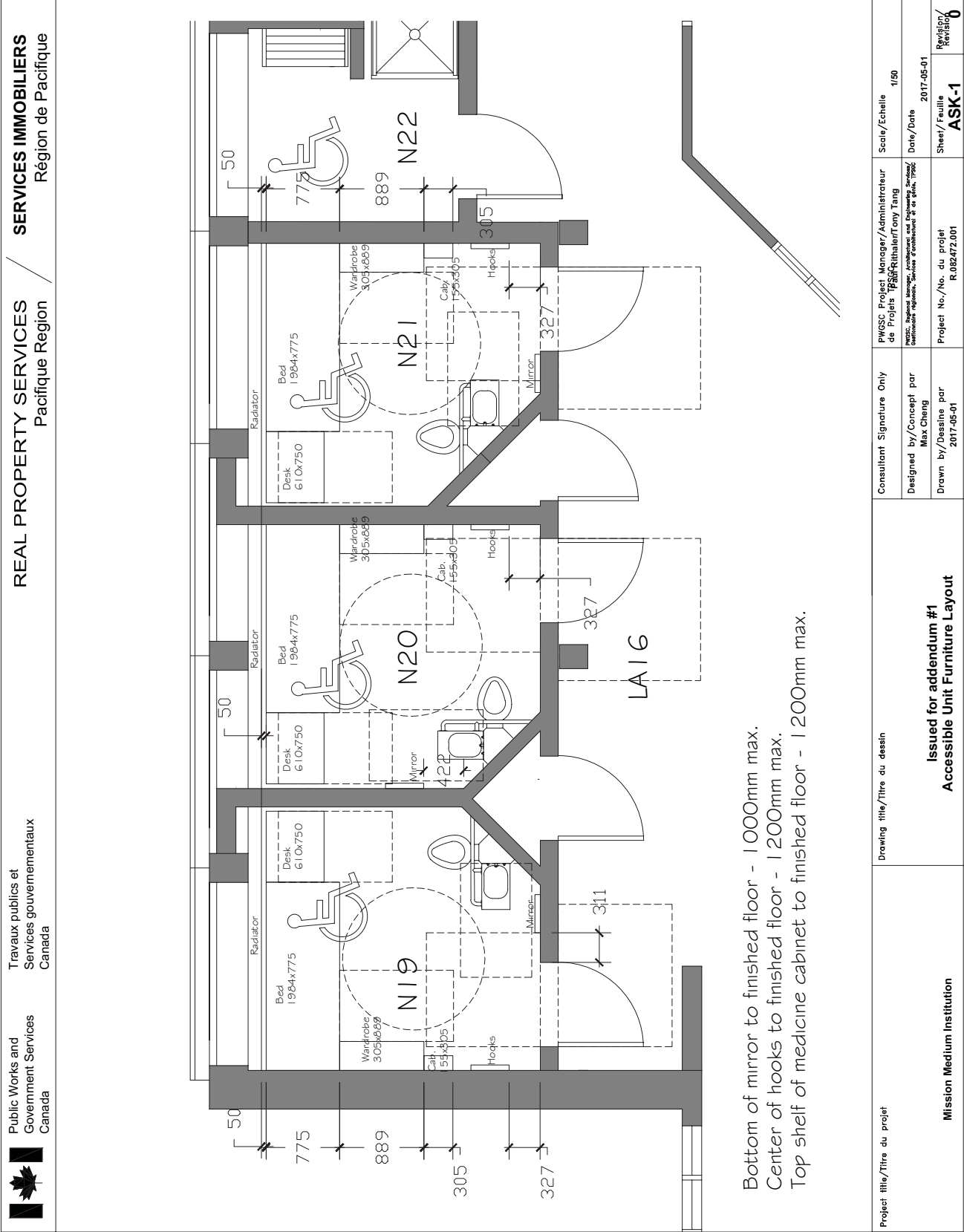
Pecora Dynapoxy EP-1200 (EP-1100 was discontinued, EP-1200 is its replacement).

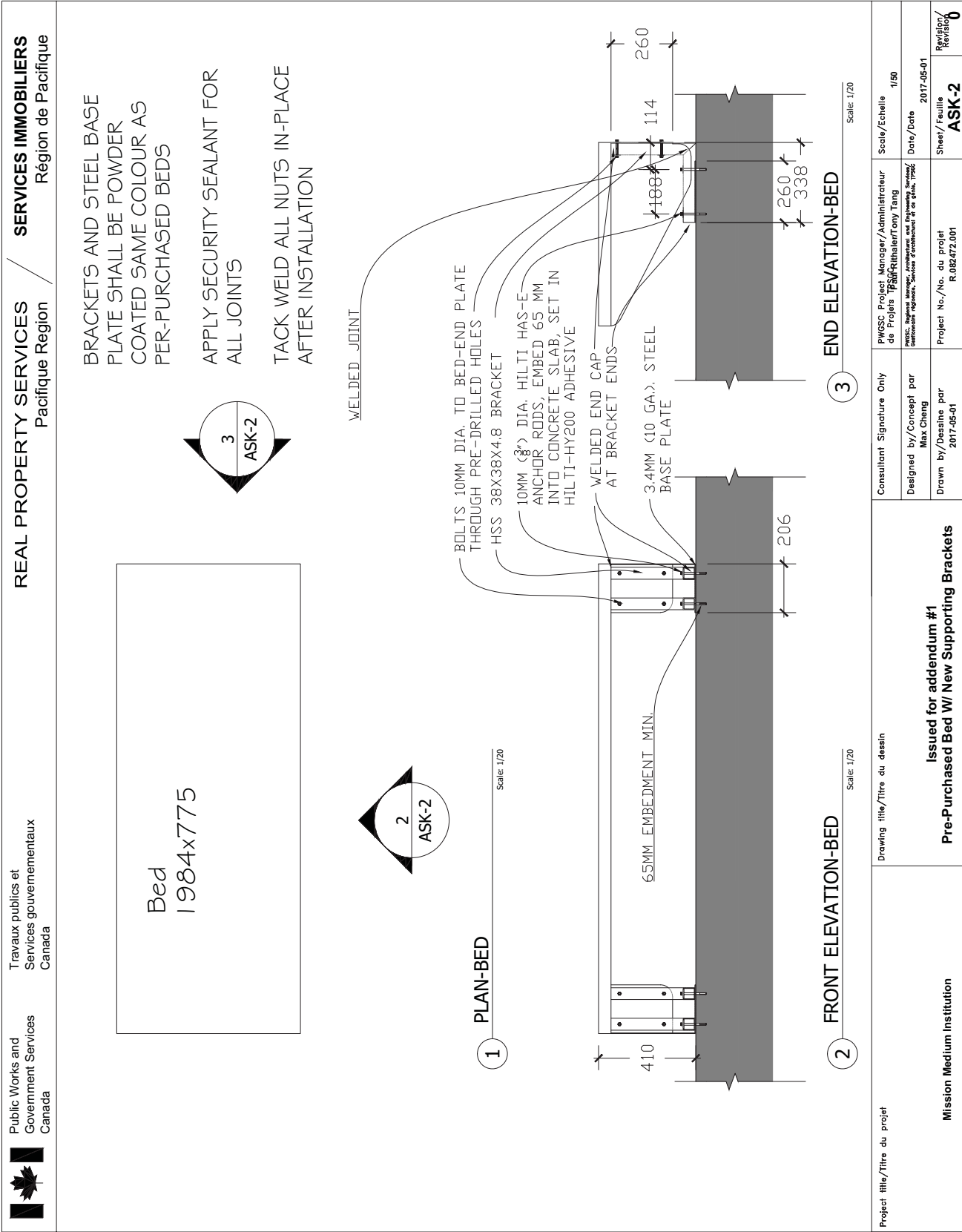
**2. Refer to Drawings:**

- .1 A01, detail #3 new furniture storage plan to be replaced with ASK-5 and ASK-6.
- .2 A02, detail #15 & #16 to be replaced with ASK-4.
- .3 A07, lower floor plan, unit N3 & N4 cell furniture replacement is completed as mock-up units for Demonstration. Contractor need to remove and re-installed bed to 410mm above finished floor.
- .4 A03, A04, A05, A06 and A07, replace Legend note "EXISTING DOUBLE BUNKS CELL. REMOVE AND DISPOSE UPPER BUNK AND LADDER BUT REMOVE & RE-INSTALL LOWER BUNK TO 410MM ABOVE FINISHED FLOOR. ALL OTHER FRUNITURE TO REMAIN. NO NEW FURNITURE FOR THESE ROOMS. APPLY SECURITY SEALANT FOR ALL JOINTS BETWEEN RE&RE BEDS TO WALLS."
- .5 A08, detail #02, #03 and #04 to be replaced with ASK-1, ASK-2 and ASK-3.

**End of Addendum #1**

---





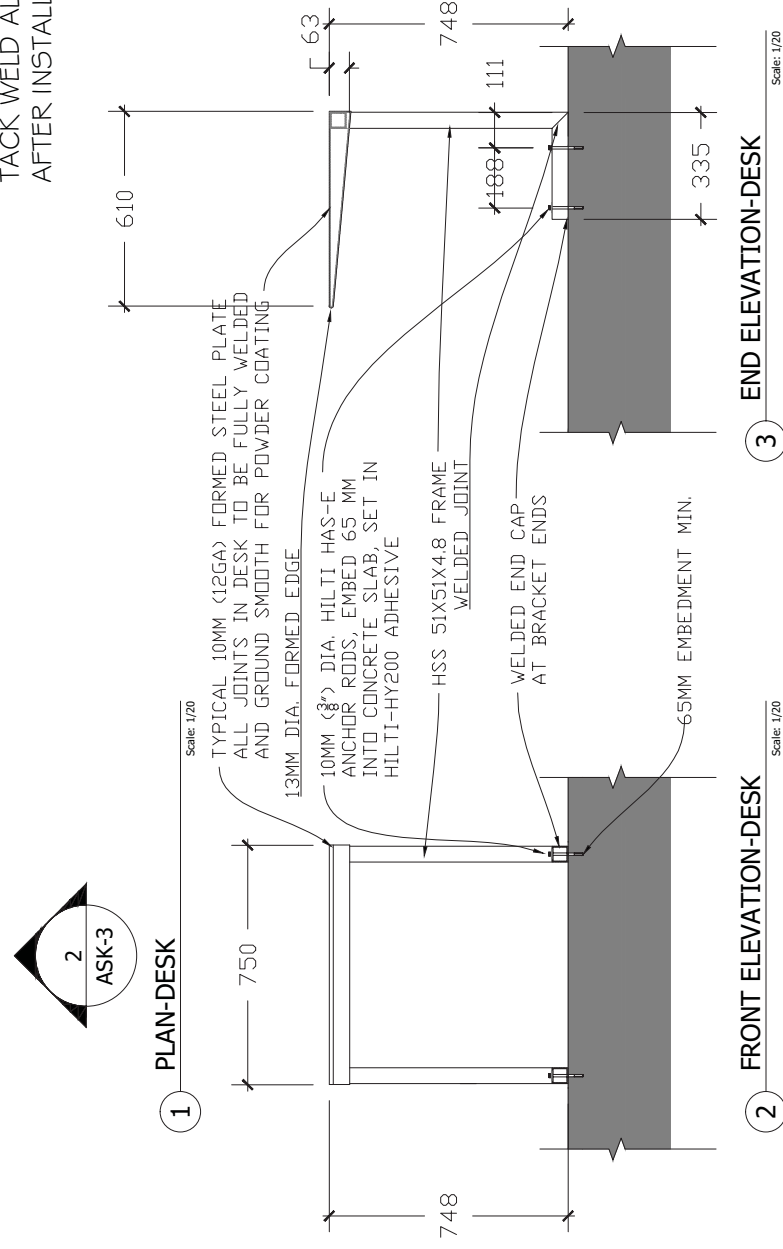
Desk  
610x750



DESK, BRACKETS AND STEEL  
BASE PLATE SHALL BE POWDER  
COATED SAME COLOUR AS  
PER-PURCHASED BEDS

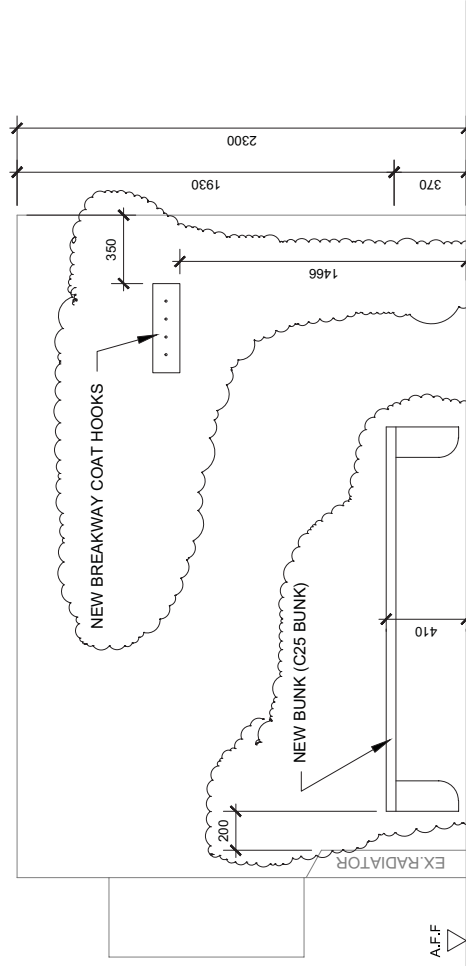
APPLY SECURITY SEALANT FOR  
ALL JOINTS

TACK WELD ALL NUTS IN-PLACE  
AFTER INSTALLATION



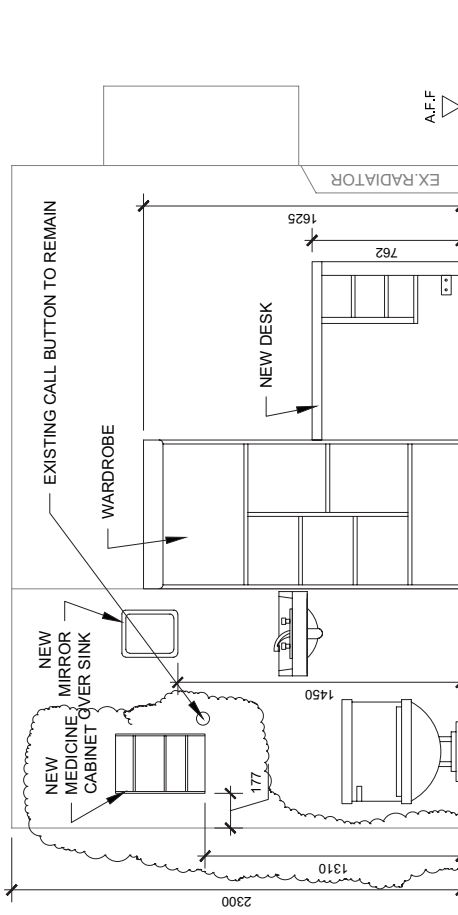
Project title/Titre du projet	Drawing title/Titre du dessin	PGWSC Project Manager/Administrateur de Projets 專案經理/行政人員 Tony Tang	Scale/Echelle 1/50
		PGWSI, Regional Manager, Architectural and Engineering Services/ 區域經理, 建築及工程服務 註冊執業工程師/建築師 註冊執業工程師/建築師 Max Cheng	Date/Date 2017-05-01
		Drawn by / Dessiné par 2017-05-01	Project No./No. du projet R.082472.001 Revision/Revision ASK-3 6

APPLY SECURITY SEALANT FOR ALL JOINTS BETWEEN FRUNITURE TO WALLS AND FLOOR SLAB, CONTINUOUSLY



1 NEW TYP. CELL FRUNITURE ELEVATION 1, DETAIL# 15/A02

Scale: N.T.S.


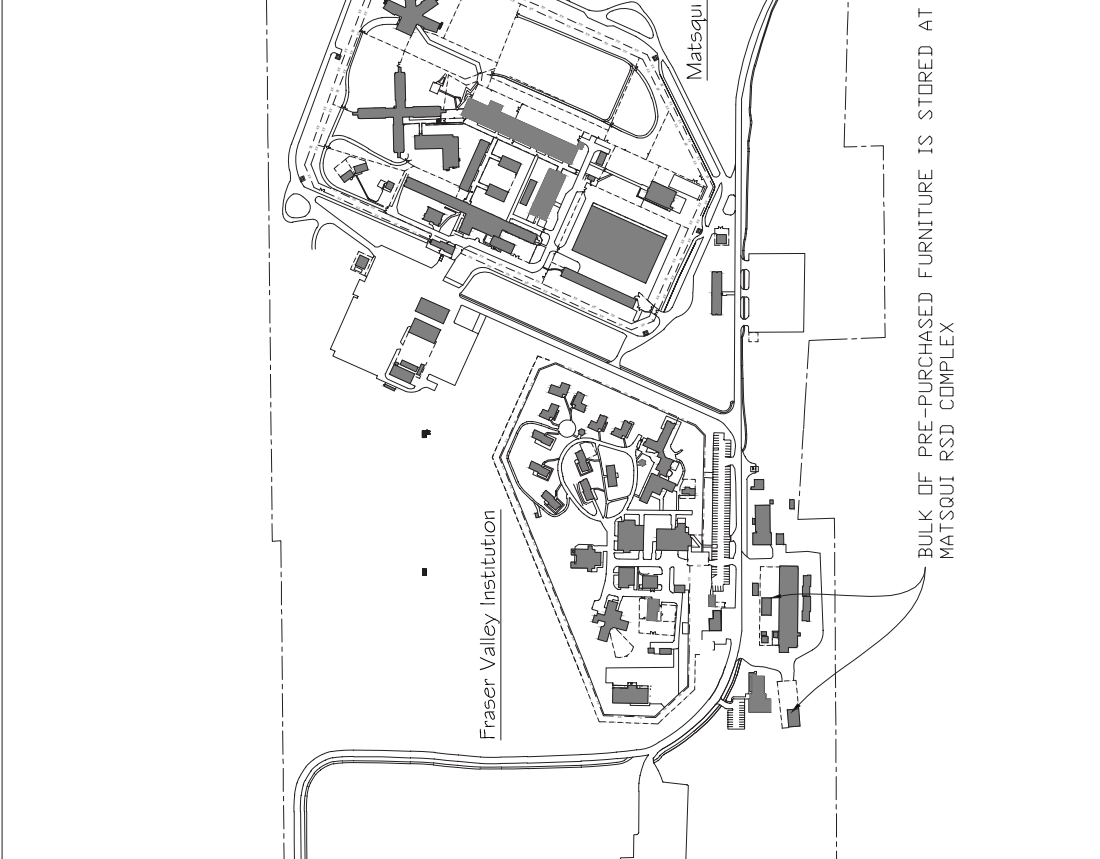


NEW TYP. CELL FRUNITURE ELEVATION 2, DETAIL# 16/A02

Scale: N.T.S.

<b>Project title/Titre du projet</b>	<b>Mission Medium Institution</b>					
<b>Drawing title/Titre du dessin</b>	<b>Issued for addendum #1 Revised Medicine Cabinet, Bed and Hook locations</b>					
<b>Consultant Signature Only</b>	<b>PWSC Project Manager/Administrateur de Projets / Tony Tang</b>					
<b>Designed by/Concept par</b>	<b>Max Cheng</b>					
<b>Drawn by/Dessiné par</b>	<b>2017-05-01</b>					
<b>Date/Date</b>	<b>2017-05-01</b>					
<b>Scale/Echelle</b>	<b>N.T.S.</b>					
<b>Revision/ Révision</b>	<b>Sheet/Feuille <b>ASK-4</b></b>					



<div>  <div> <div>Public Works and Government Services Canada</div> <div>Travaux publics et Services gouvernementaux Canada</div> </div> </div>	<div> <div>REAL PROPERTY SERVICES</div> <div>Pacifique Region</div> </div>	<div> <div>SERVICES IMMOBILIERS</div> <div>Région de Pacifique</div> </div>
<div>  </div>	<div> <div>Drawing title/Titre du dessin</div> <div>Issued for addendum #1 Furniture Storage at Matsqui Institution</div> </div>	<div> <div>Project title/Titre du projet</div> <div>Mission Medium Institution</div> </div>
<div> <div>Consultant Signature Only</div> <div>Designed by/Concept par Max Cheng</div> <div>Drawn by/Dessiné par 2017-05-01</div> </div>	<div> <div>PWGSC Project Manager/Administrateur de Projets</div> <div>P. Rithaler/Tony Tang</div> </div>	<div> <div>Scale/Echelle</div> <div>N.T.S.</div> </div>
<div> <div>Date/Date</div> <div>2017-05-01</div> </div>	<div> <div>Project No./No. du projet</div> <div>R.082472.001</div> </div>	<div> <div>Revision/Revision</div> <div>ASK-5</div> </div>
<div> <div>Revision/Revision</div> <div>0</div> </div>		

<div>Public Works and Government Services Canada</div> <div>Travaux publics et Services gouvernementaux Canada</div>		<div>REAL PROPERTY SERVICES</div> <div>Pacifique Region</div>		<div>SERVICES IMMOBILIERS</div> <div>Région de Pacifique</div>											
<div>Project title/Titre du projet</div> <div>Mission Medium Institution</div>		<div>Drawing title/Titre du dessin</div> <div>Issued for addendum #1 Furniture Storage at Mission Institution</div>		<div>Consultant Signature Only</div> <div>Designed by/Concept par Max Cheng</div> <div>Drawn by/Dessiné par 2017-05-01</div>		<div>PWGSC Project Manager/Administrateur de Projets</div> <div>Paul Rithaler/Tony Tang</div>		<div>Scale/Echelle</div> <div>N.T.S.</div>		<div>Date/Date</div> <div>2017-05-01</div>		<div>Sheet/Fauille</div> <div>ASK-6</div>		<div>Revision/Revision</div> <div>0</div>	
<div><div><div>Minimum Bldg 39 Compost &amp; Equipment Storage Shed</div><div>Minimum Bldg 36 In Vessel Compost Bldg</div><div>46 CELL PRE-PURCHASED FURNITURE IS STORED IN MISSION INSTITUTION FOR FIRST LIVING UNIT FURNITURE REPLACEMENT. CONTRACTOR MAY USE THIS SPACE FOR CONTRACTION STORAGE AND OFFICE</div></div></div>															