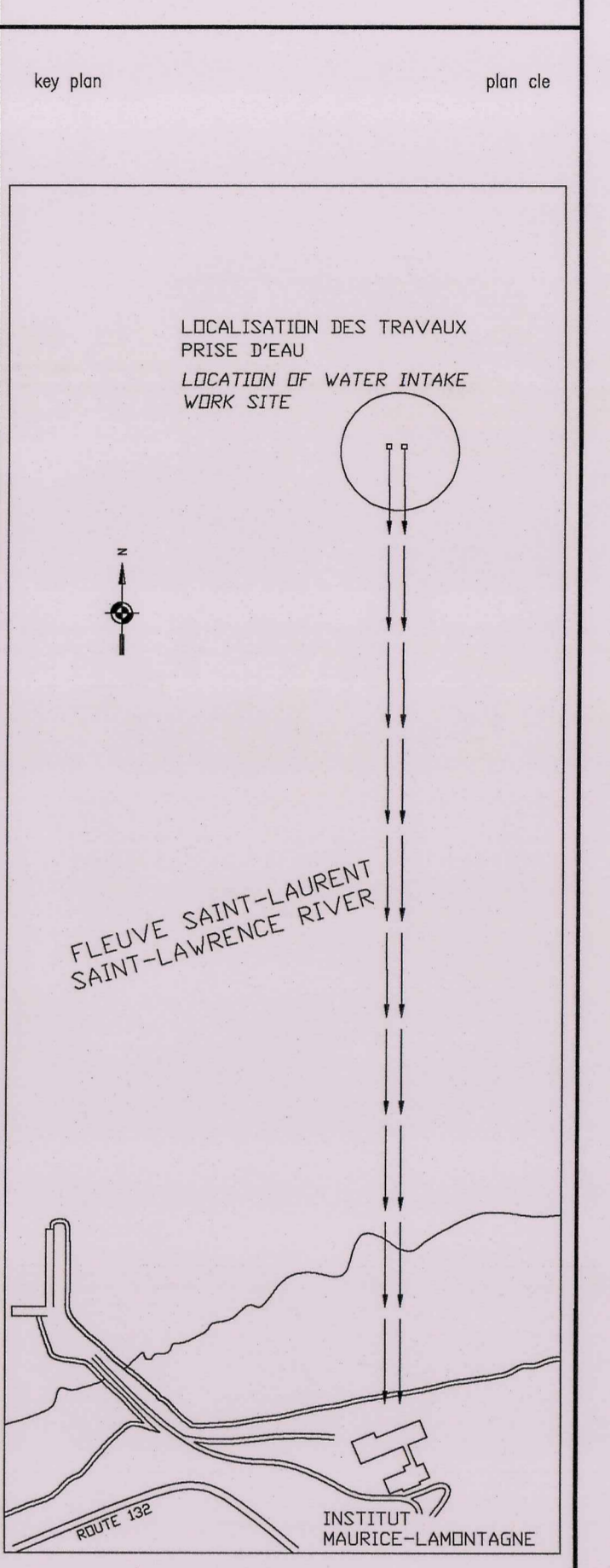
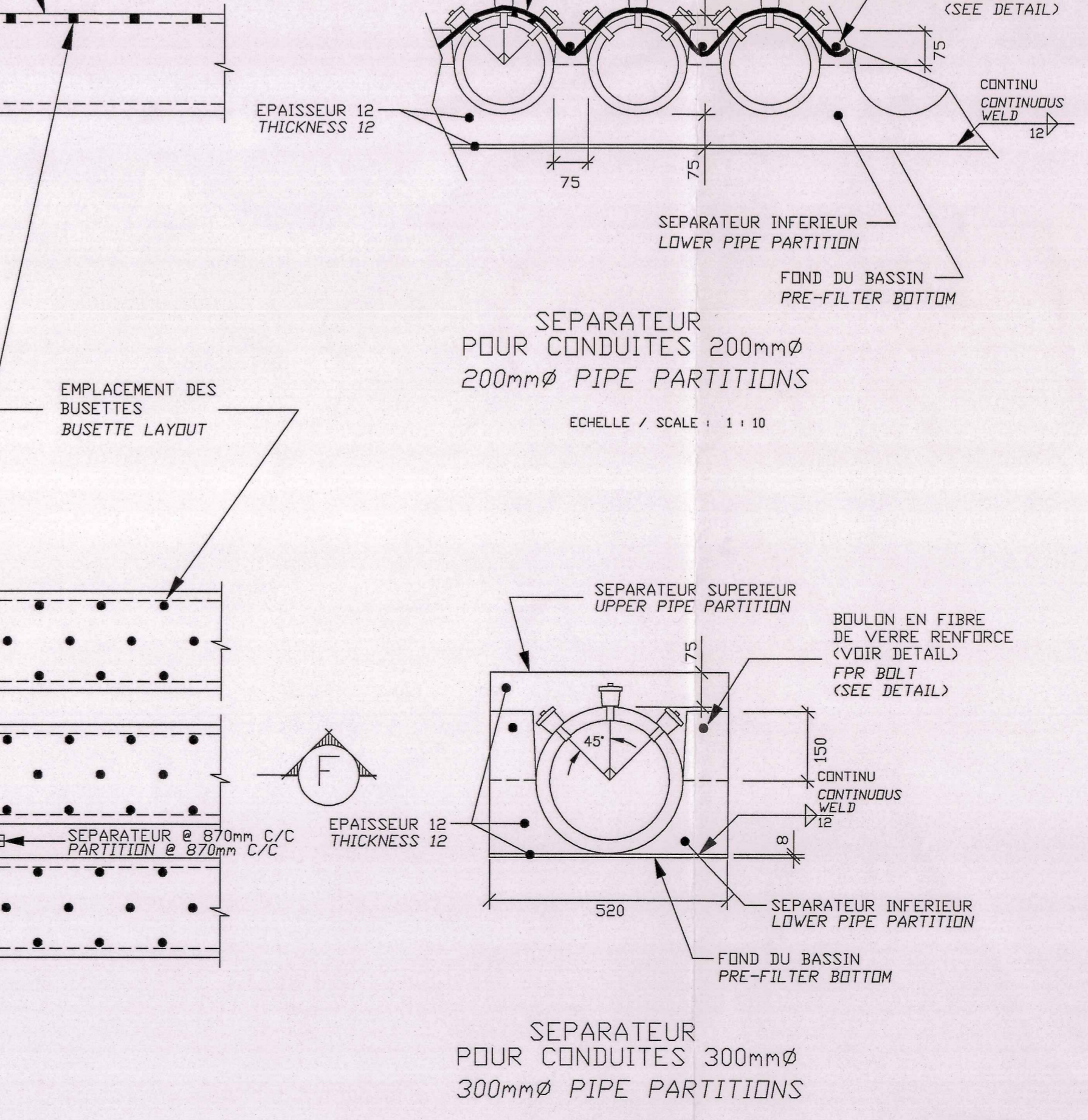
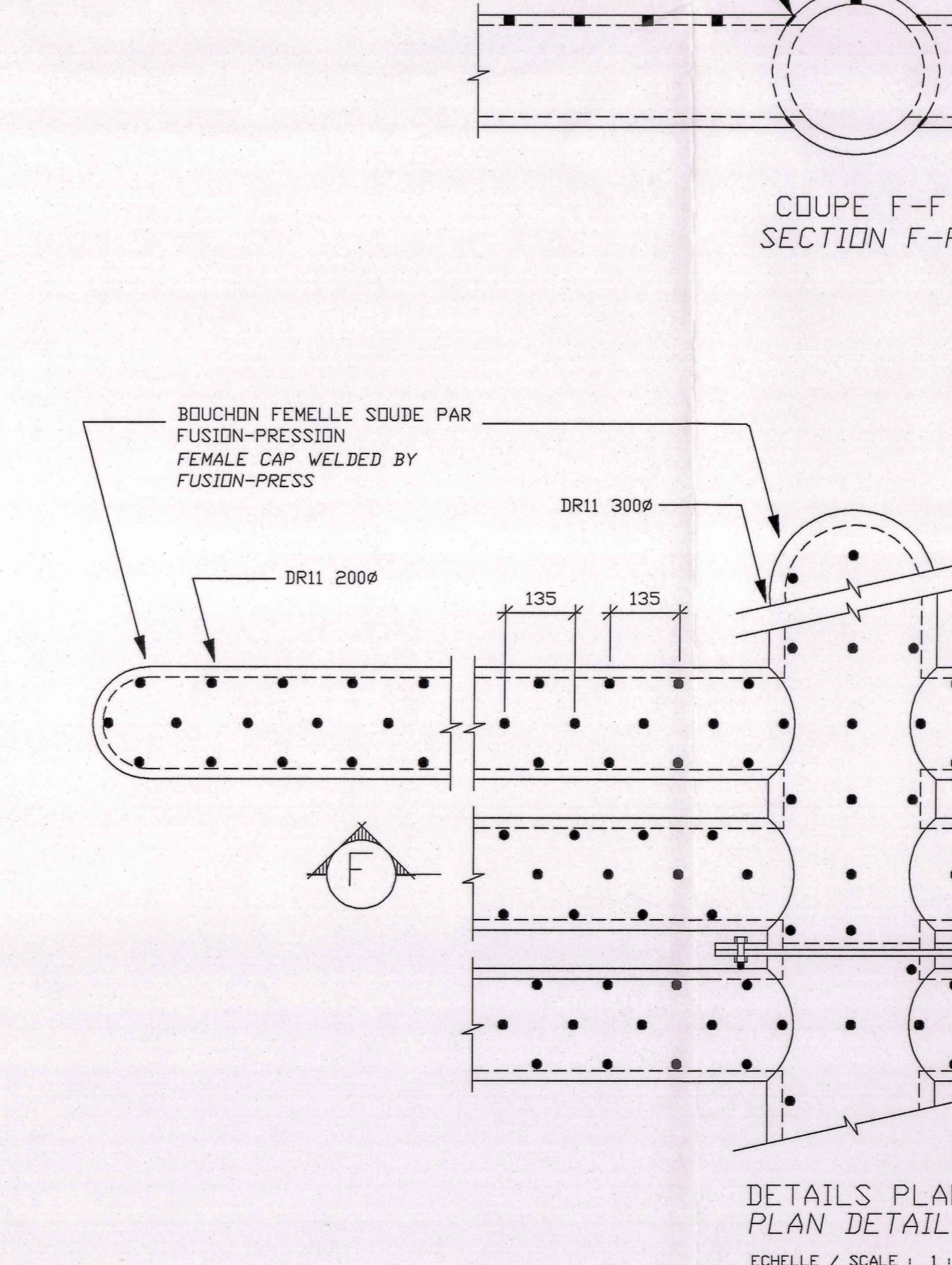
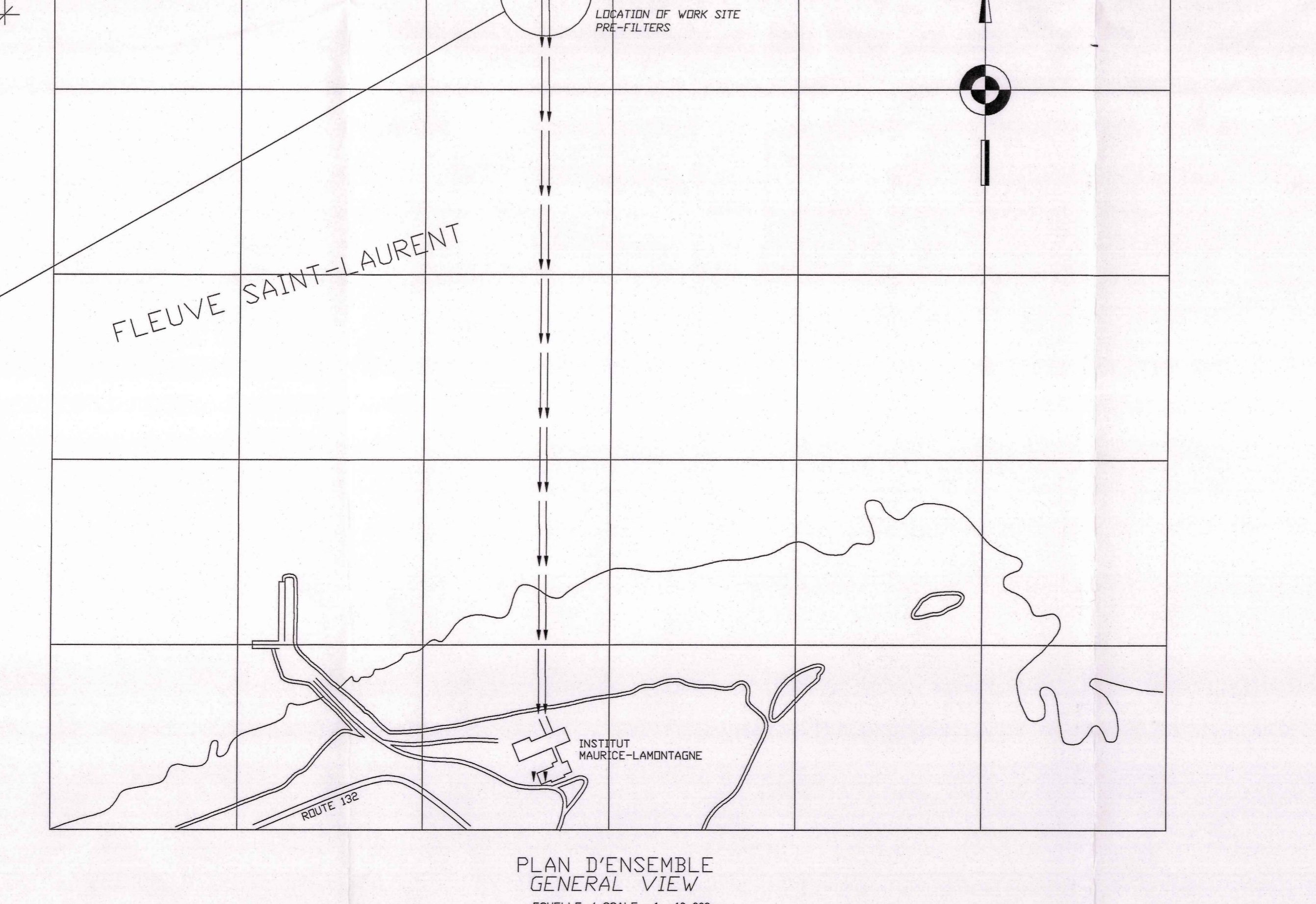
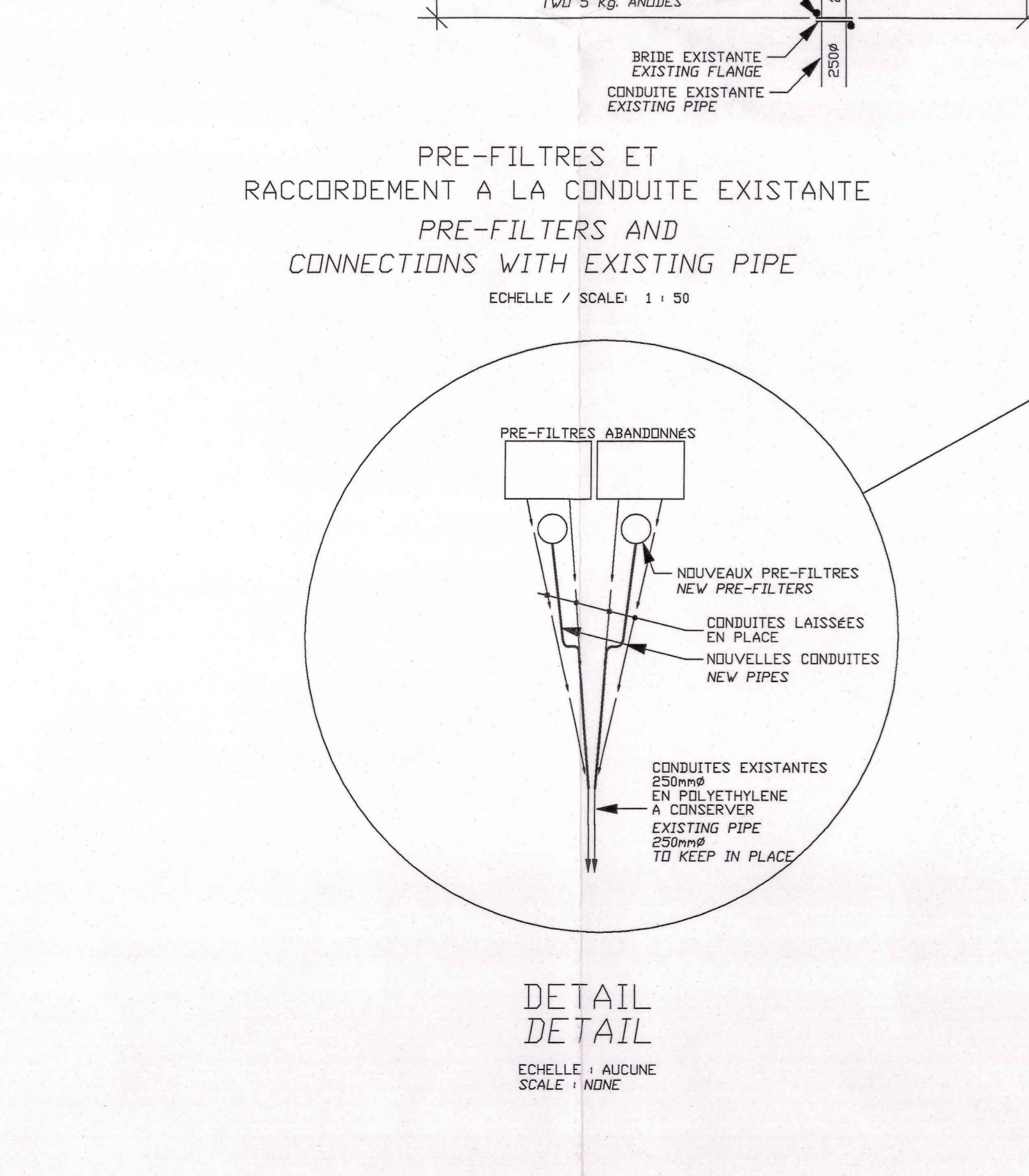
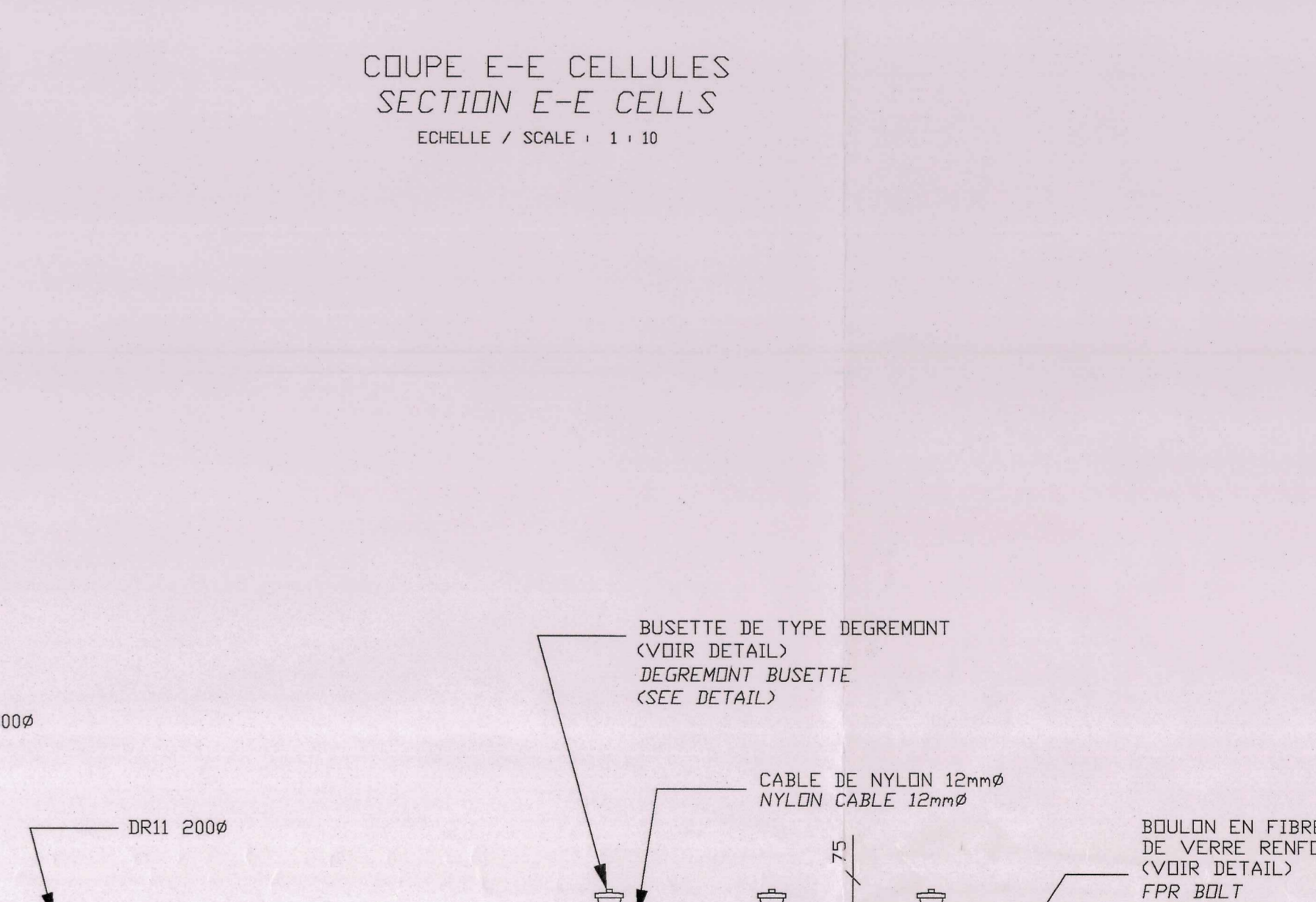
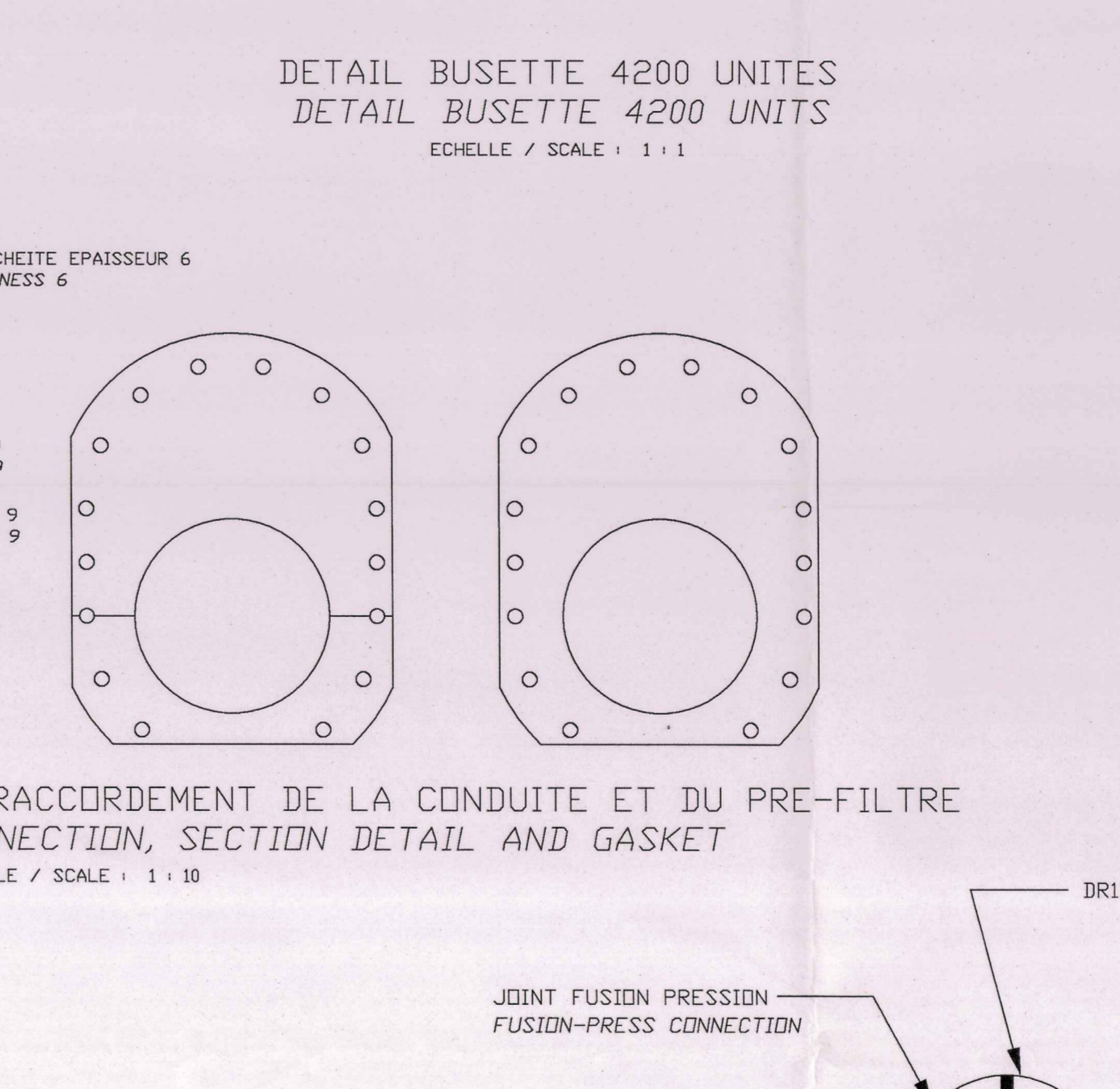
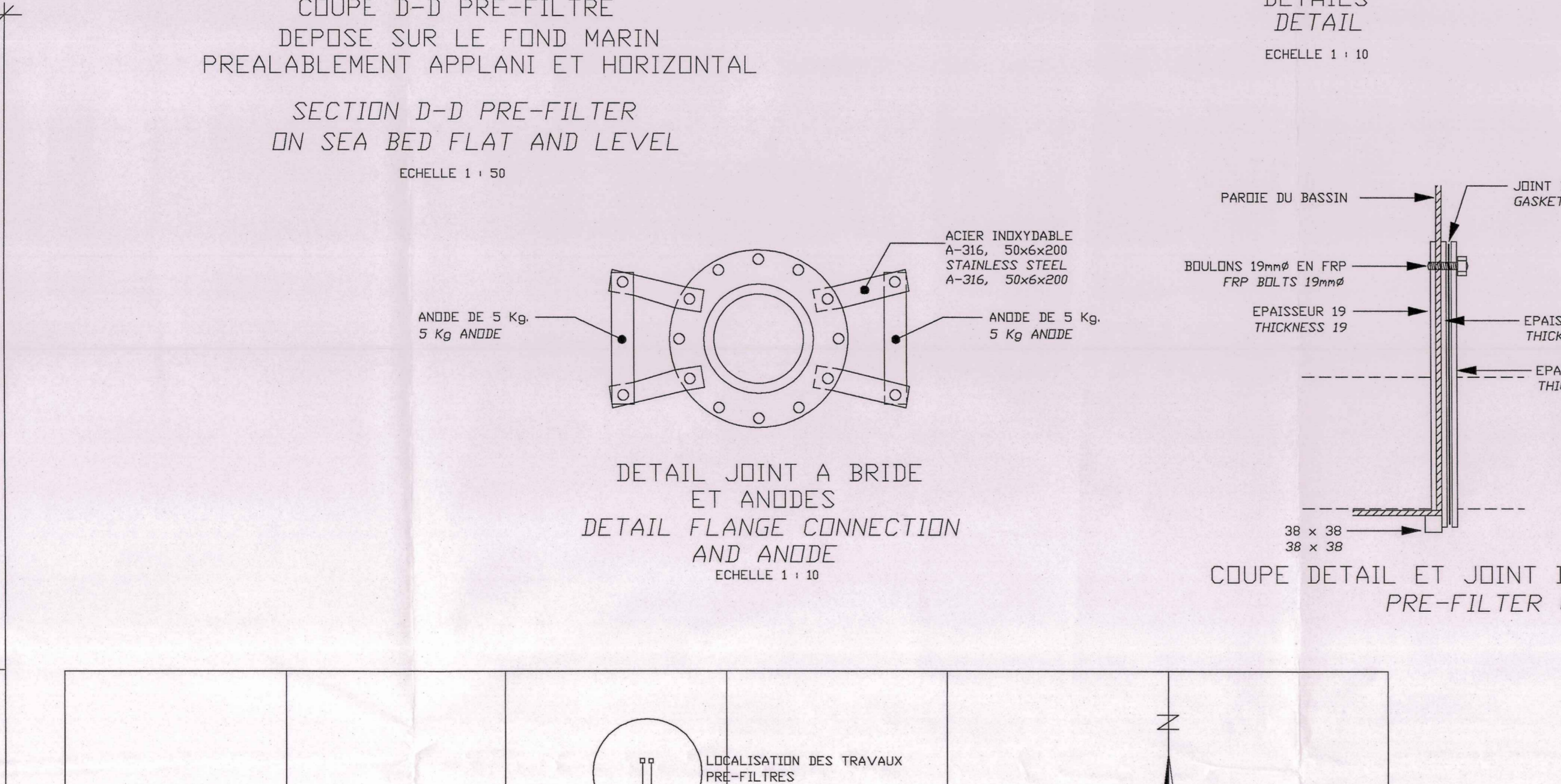
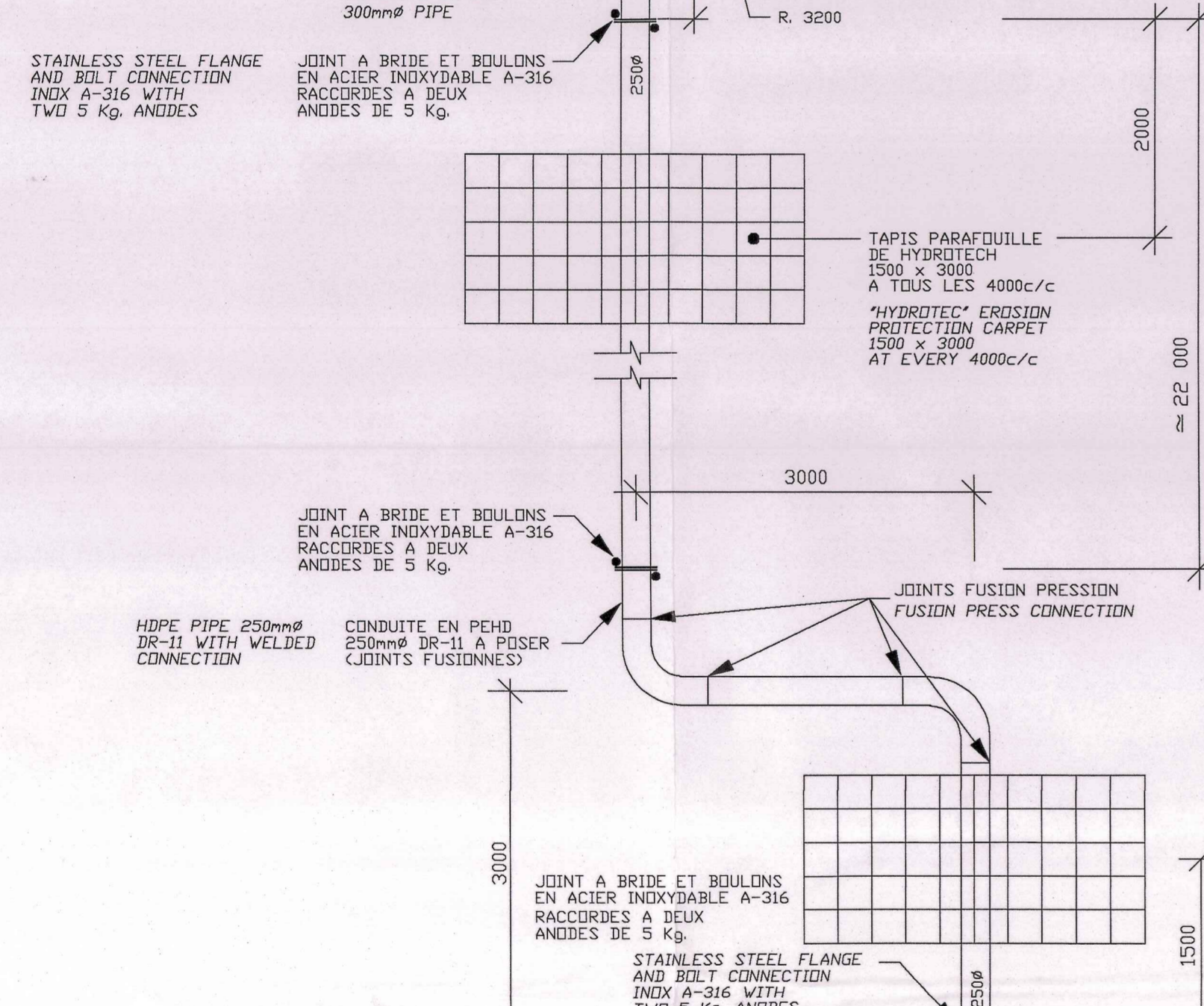
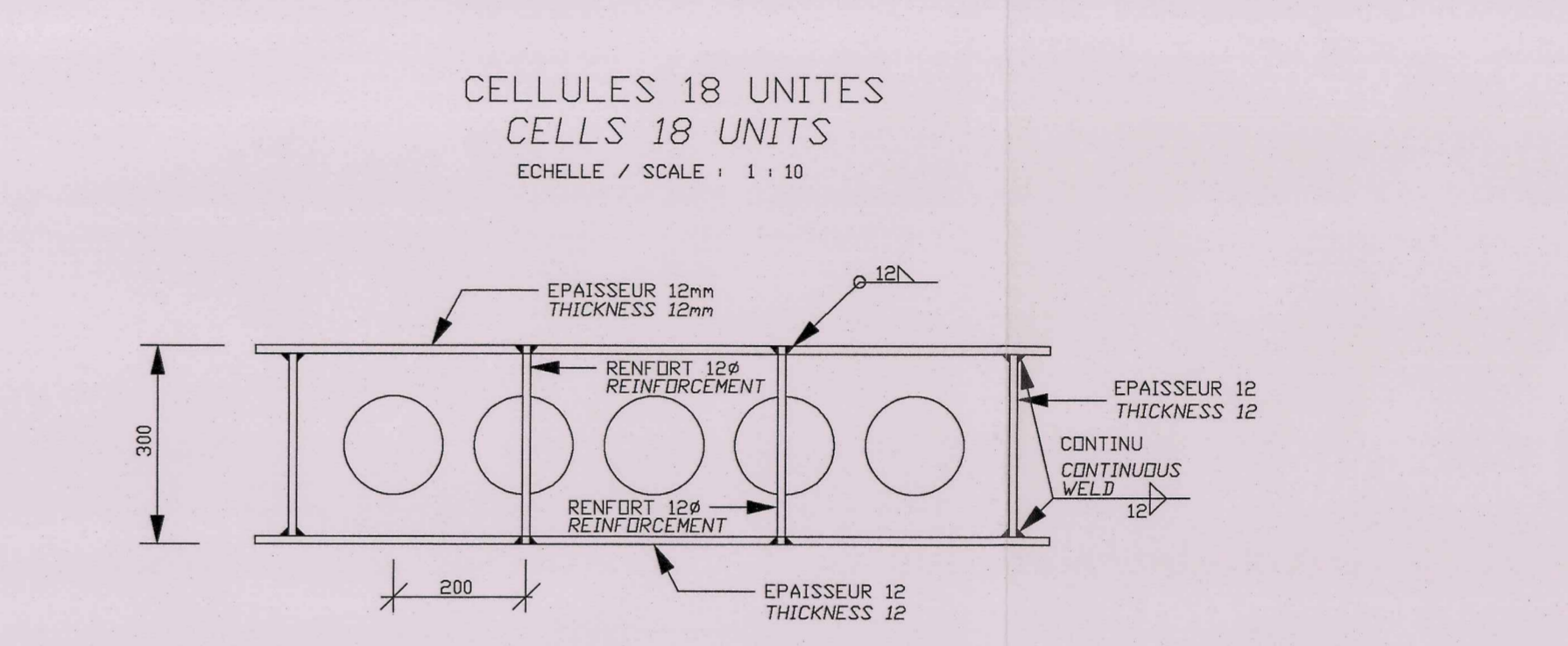
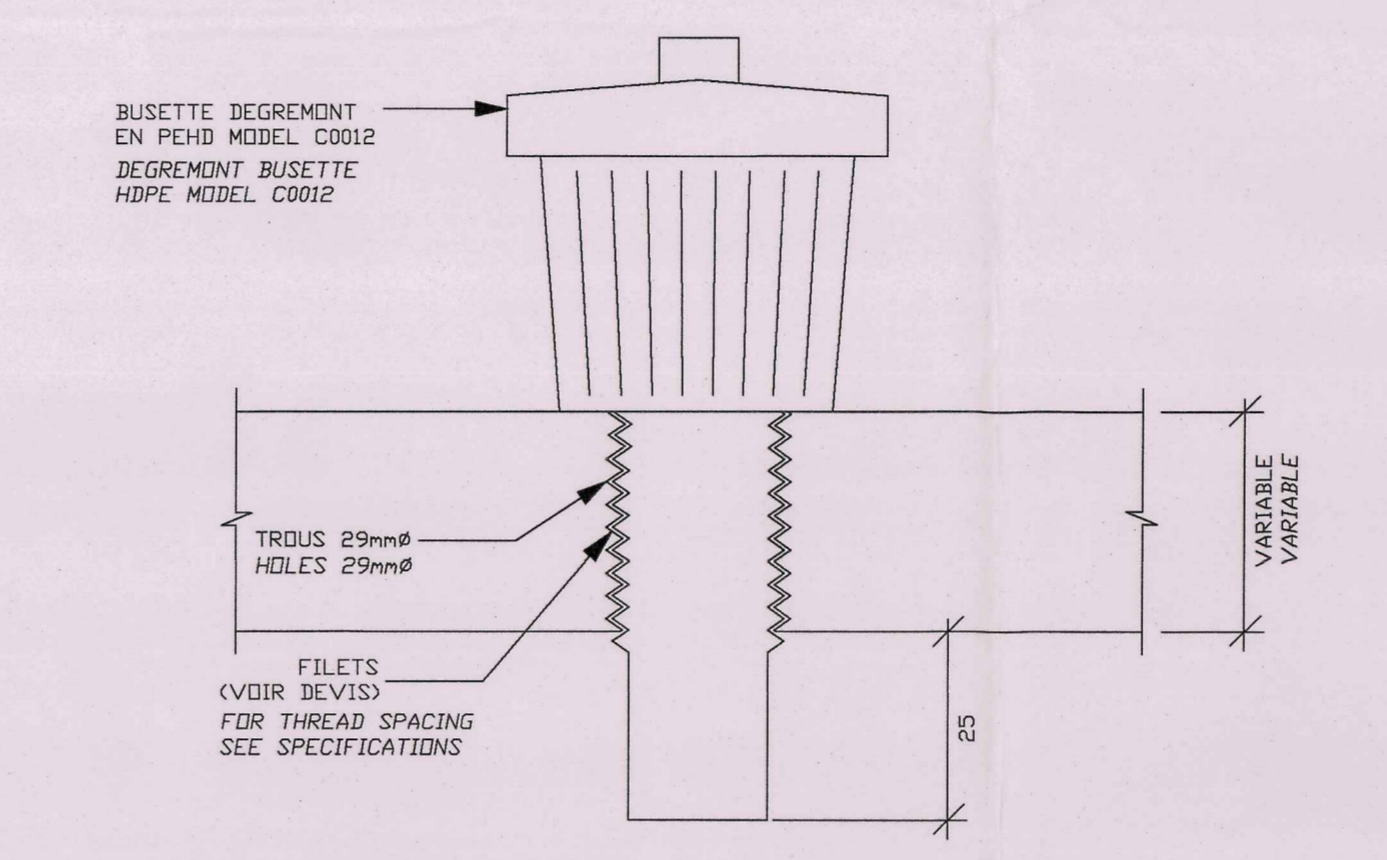
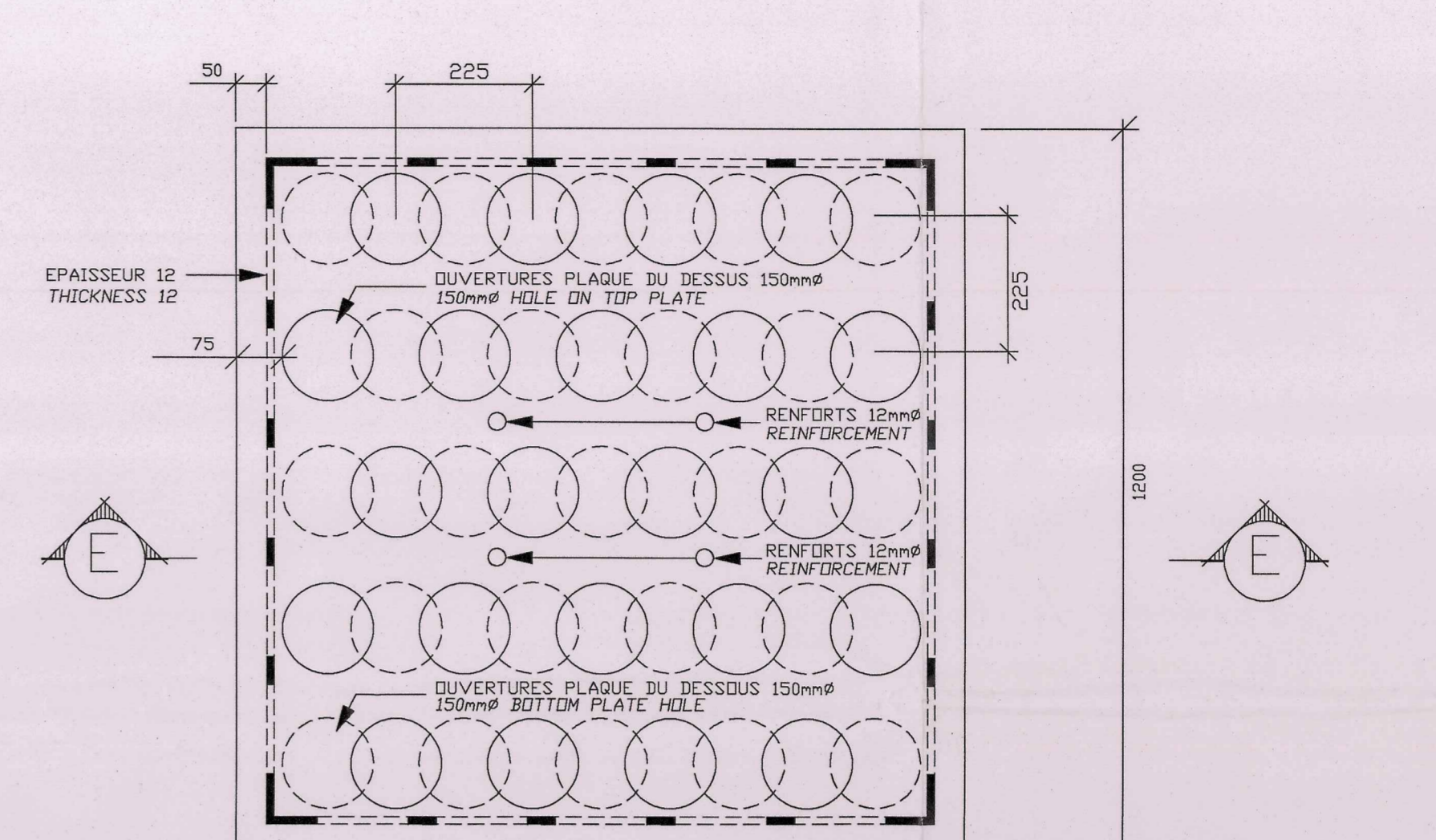
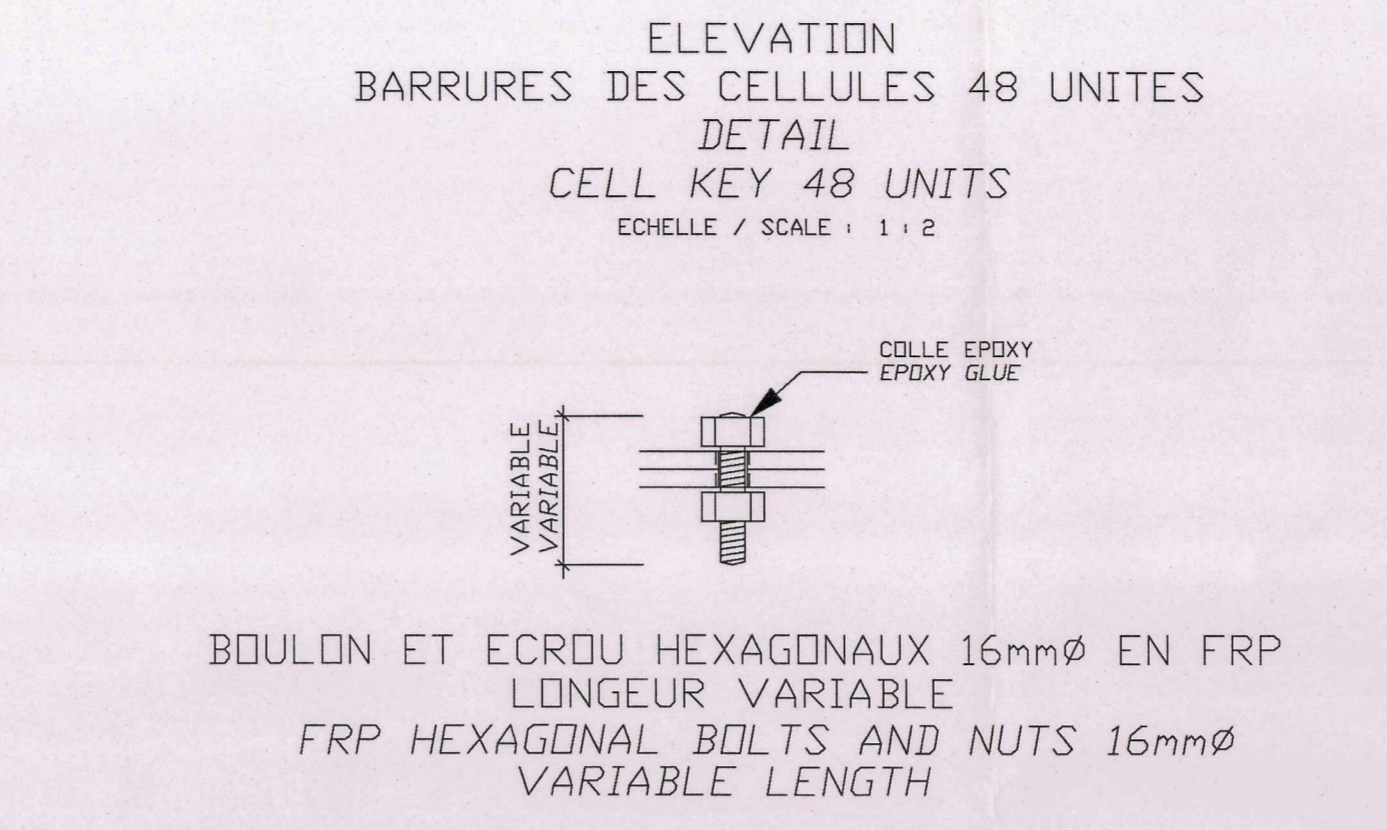
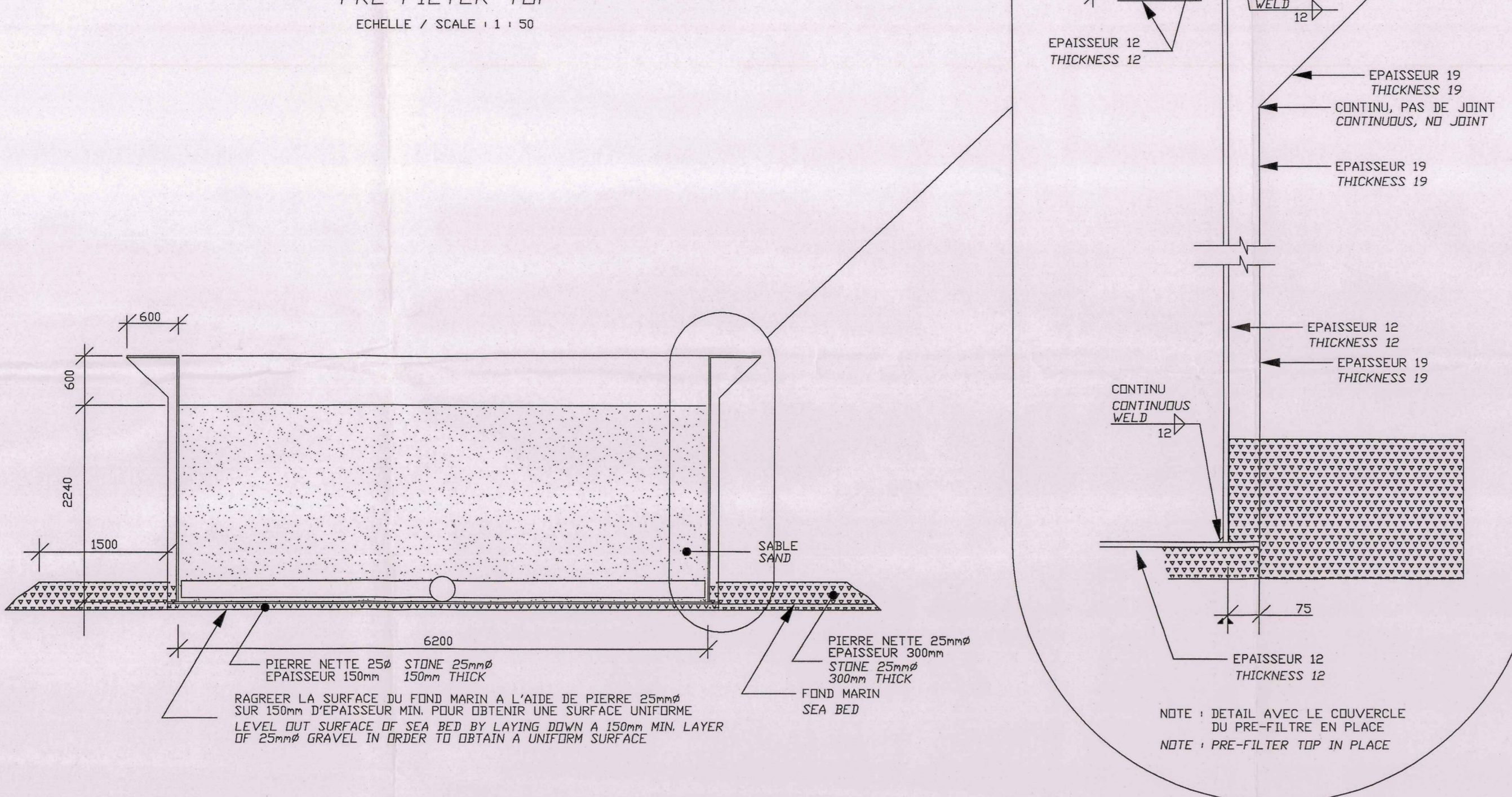
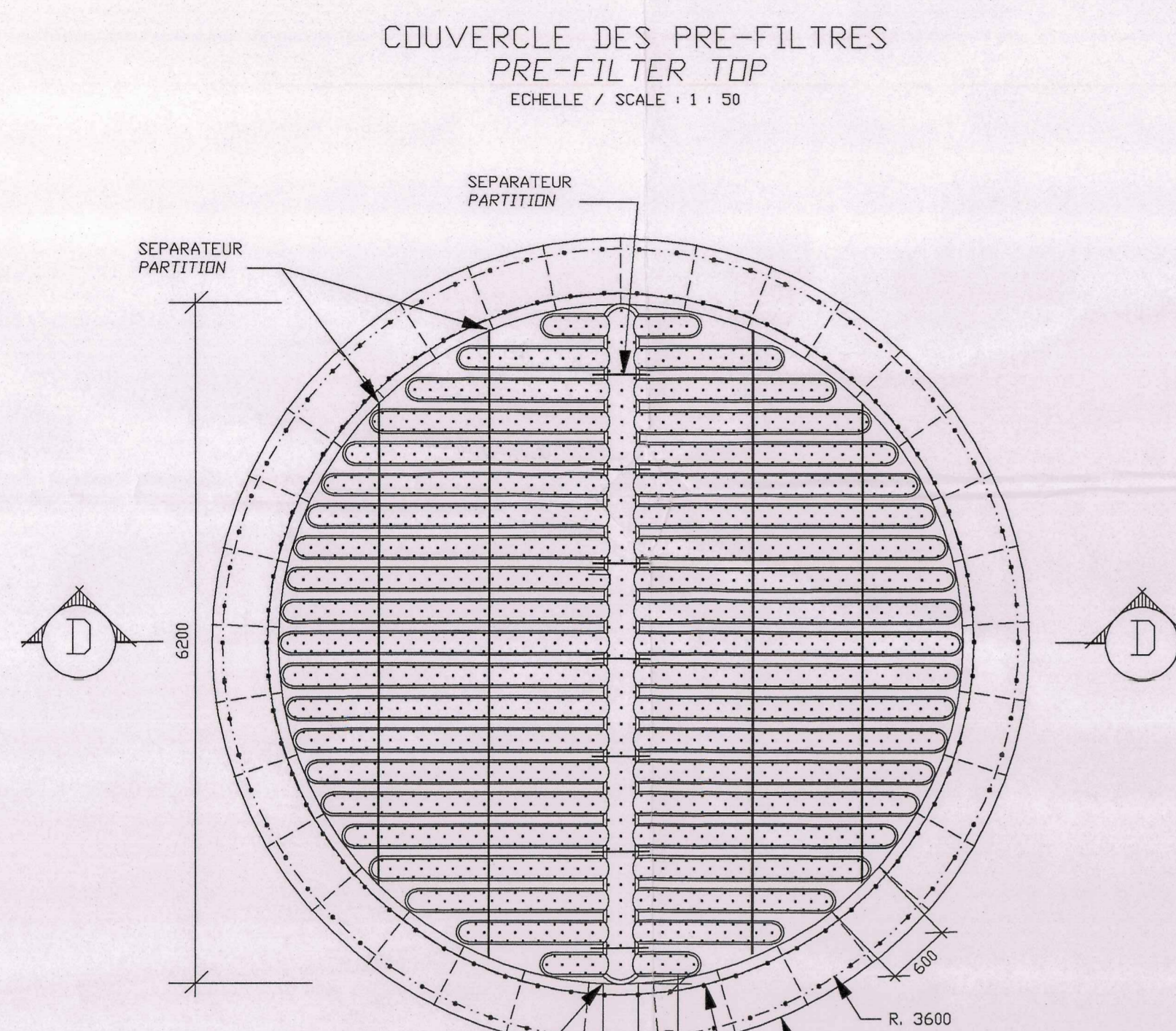
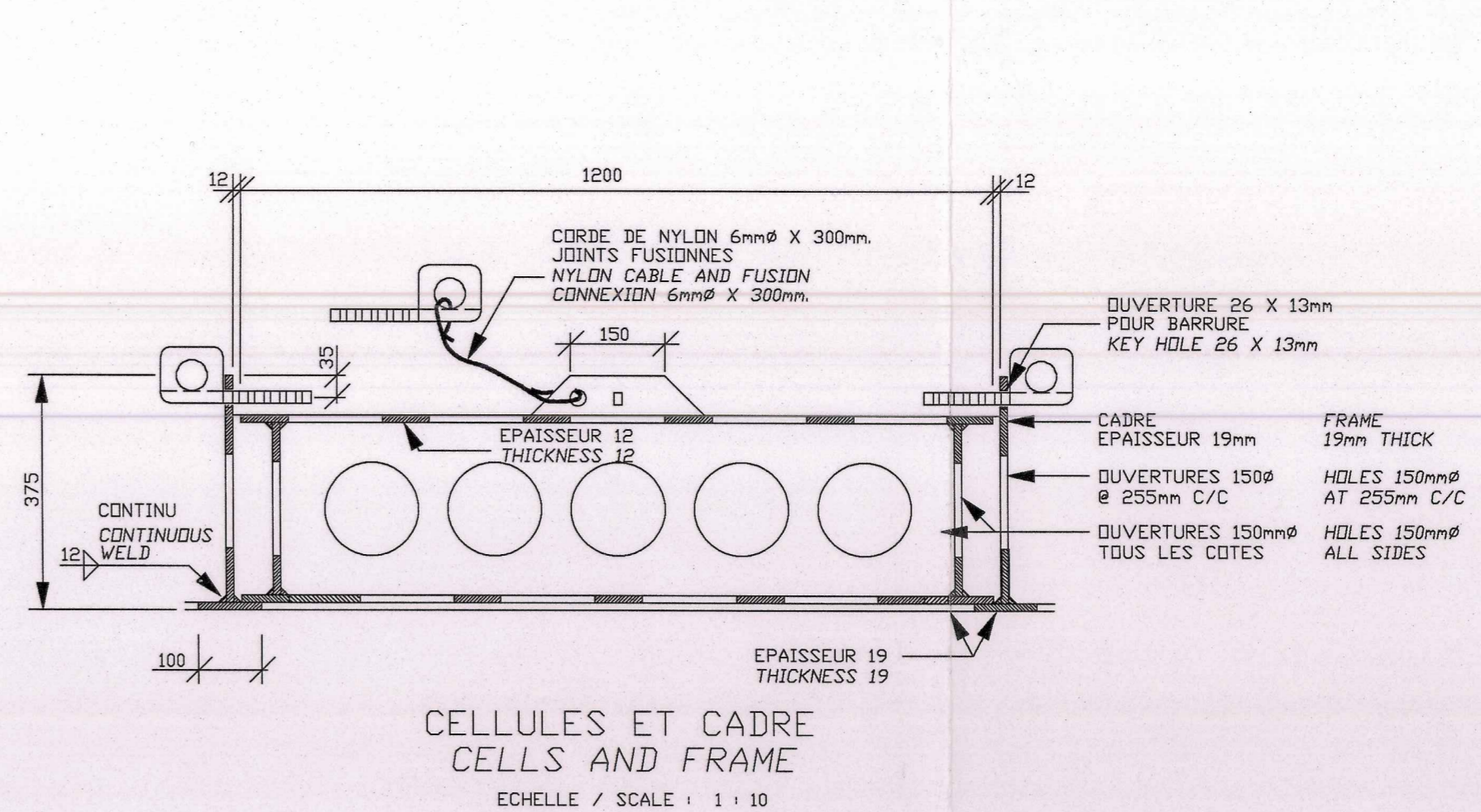
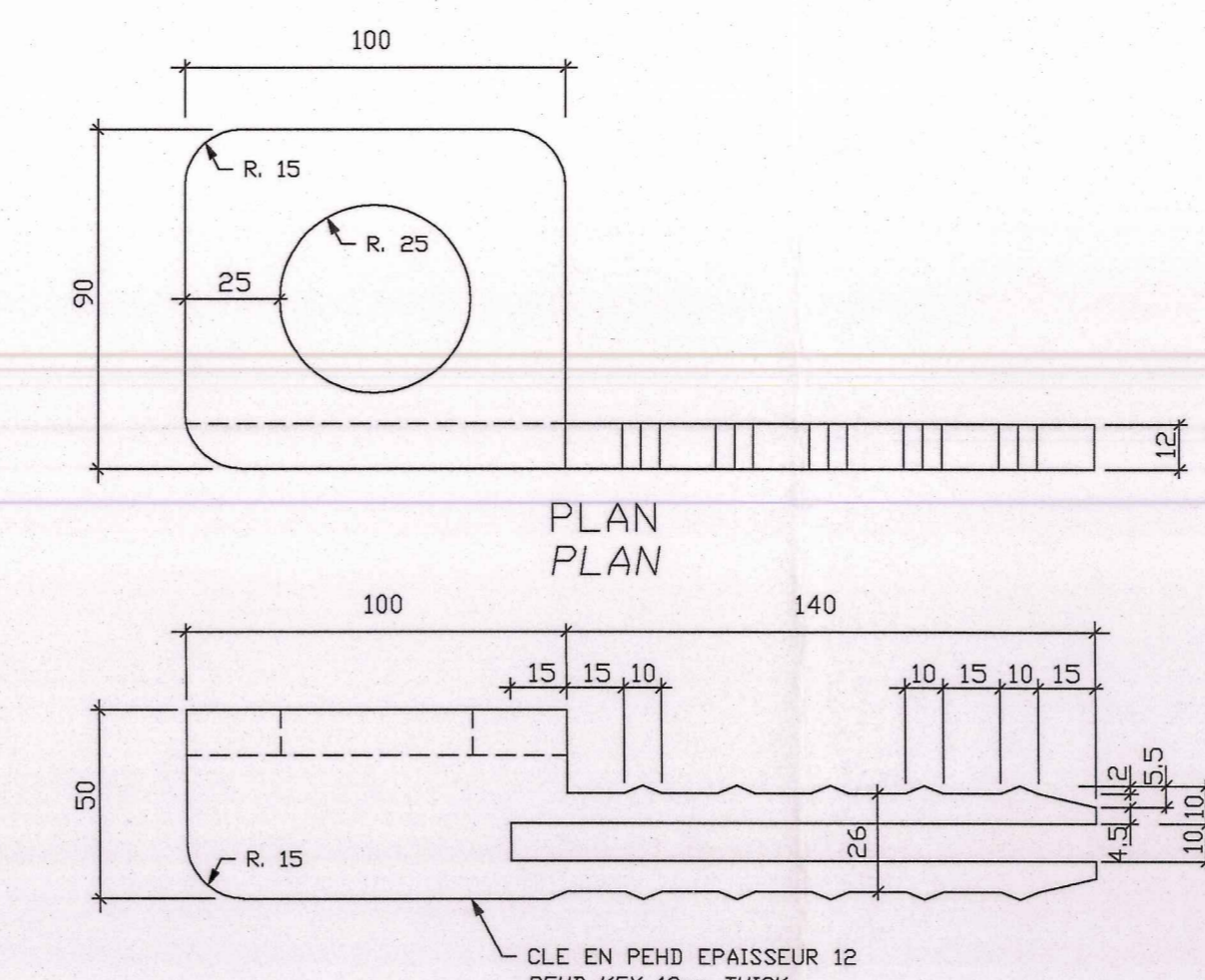
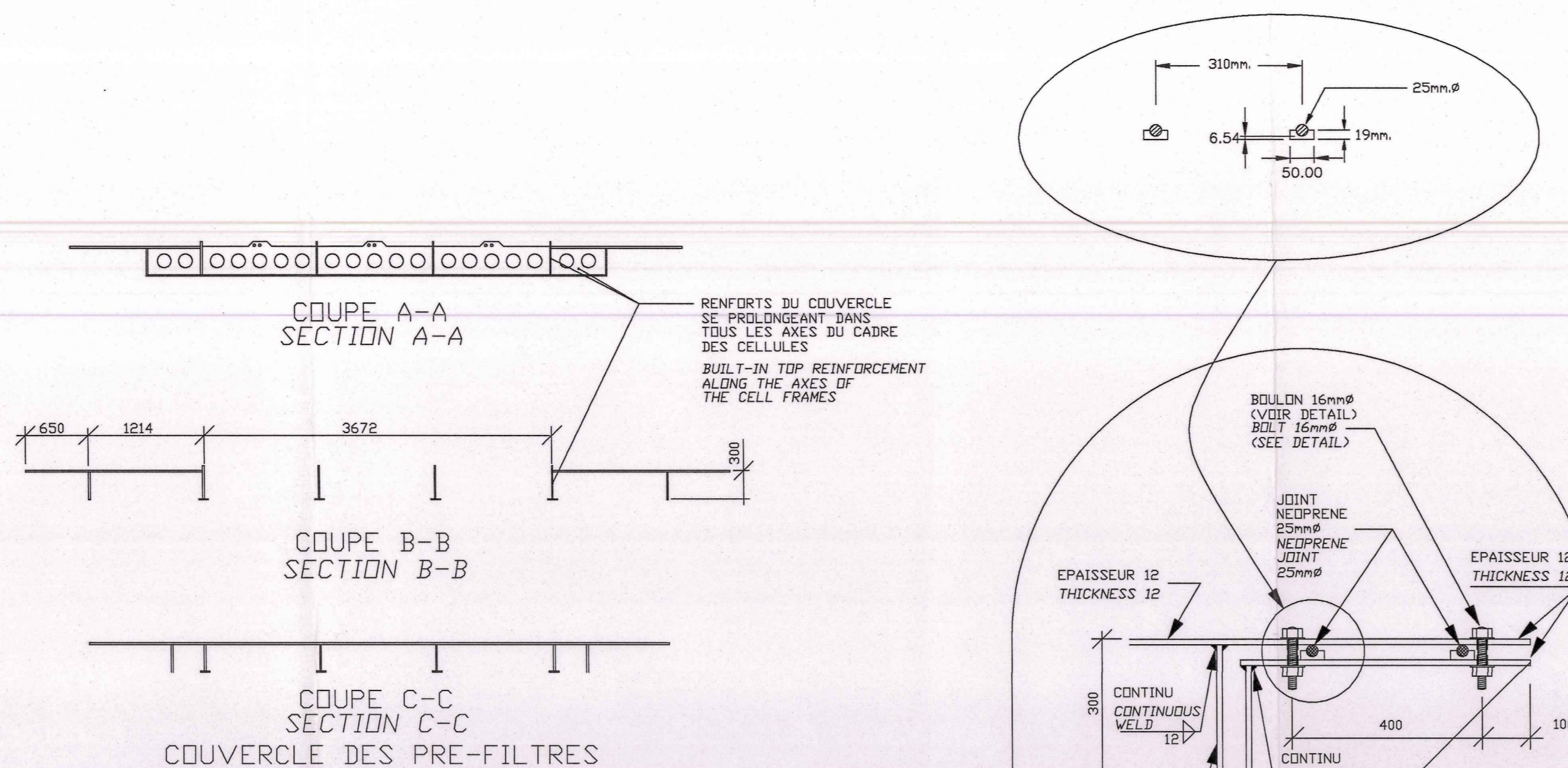
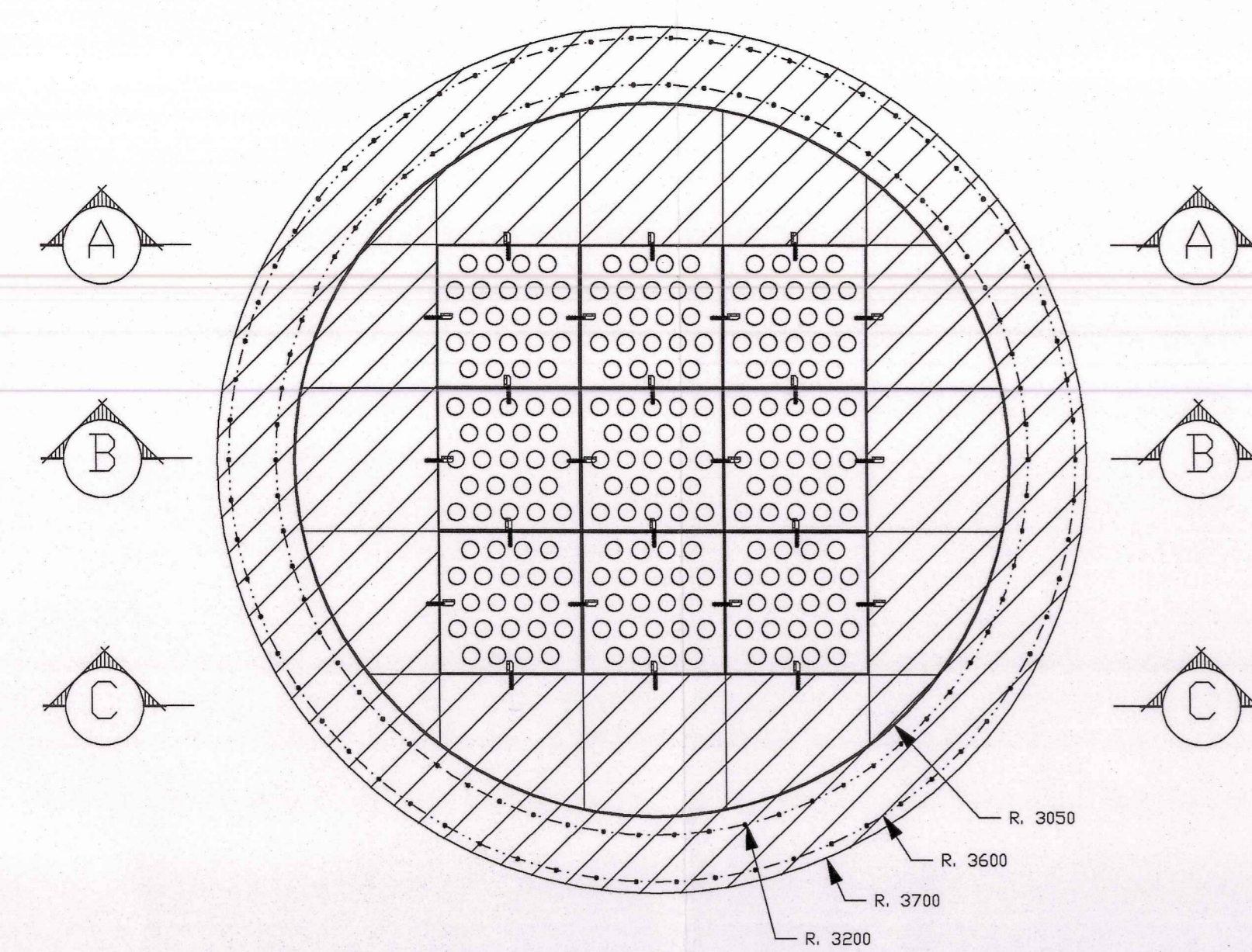
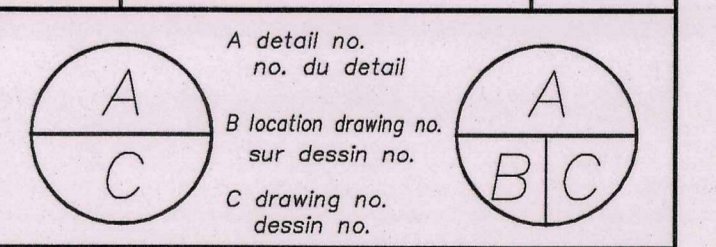


NOTE: SAUF INDICATION CONTRAIRE TOUTS LES MATERIAUX SERONT EN POLYETHYLENE HAUTE DENSITE PEHD BLANC POUR LES BASSINS ET NEIR POUR LES CONDUITES. UNLESS OTHERWISE NOTED HDPE COLOR WILL BE WHITE FOR PRE-FILTERS AND BLACK FOR PIPES.



INGENIEUR  
DENIS GILBERT  
1994  
26 Mars 2011

no.	description	date
4	TEL QUE CONSTRUIT	01-01-26
3	SDUMMISSION / BID	00-07-11
2	GENERALE	00-06-16
1	GENERALE	00-06-08



project STE-FLAVIE  
INSTITUT MAURICE-LAMONTAGNE  
PRISE D'EAU DE MER  
MAURICE-LAMONTAGNE INSTITUTE  
INTAKE WATER SEA

drawing DEUX NOUVEAUX PRE-FILTRES  
TWO NEW PRE-FILTERS

designed DENIS GILBERT  
date GAETAN COTE  
approved GUY TURGEON, Ing. M. A.  
Tender MARCEL VALOIS, Ing. Soumission  
PWC Project Manager Administrateur de projets IPC  
drawing number 202486  
drawing no. 202486  
sheet no. C 2  
feuille no. 2