



RETURN BIDS TO:

RETOURNER LES SOUMISSIONS À:

**Bid Receiving - PWGSC / Réception des soumissions
- TPSGC**
11 Laurier St./11, rue Laurier
Place du Portage, Phase III
Core 0B2 / Noyau 0B2
Gatineau, Québec K1A 0S5
Bid Fax: (819) 997-9776

**SOLICITATION AMENDMENT
MODIFICATION DE L'INVITATION**

The referenced document is hereby revised; unless otherwise indicated, all other terms and conditions of the Solicitation remain the same.

Ce document est par la présente révisé; sauf indication contraire, les modalités de l'invitation demeurent les mêmes.

Comments - Commentaires

Vendor/Firm Name and Address
Raison sociale et adresse du
fournisseur/de l'entrepreneur

Issuing Office - Bureau de distribution
Furniture Division/Division des ameublements
11 Laurier St. / 11, rue Laurier
6B1, Place du Portage
Gatineau
Québec
K1A 0S5

Title - Sujet 56 Sparks - The Senate Fitup		
Solicitation No. - N° de l'invitation EP927-173019/A		Amendment No. - N° modif. 002
Client Reference No. - N° de référence du client 20173019		Date 2017-05-11
GETS Reference No. - N° de référence de SEAG PW-\$SPQ-968-72844		
File No. - N° de dossier pq968.EP927-173019	CCC No./N° CCC - FMS No./N° VME	
Solicitation Closes - L'invitation prend fin at - à 02:00 PM on - le 2017-05-16		Time Zone Fuseau horaire Eastern Daylight Saving Time EDT
F.O.B. - F.A.B. Plant-Usine: <input type="checkbox"/> Destination: <input type="checkbox"/> Other-Autre: <input type="checkbox"/>		
Address Enquiries to: - Adresser toutes questions à: Dale, Evonne		Buyer Id - Id de l'acheteur pq968
Telephone No. - N° de téléphone (613) 853-6646 ()		FAX No. - N° de FAX (819) 956-5706
Destination - of Goods, Services, and Construction: Destination - des biens, services et construction:		

Instructions: See Herein

Instructions: Voir aux présentes

Delivery Required - Livraison exigée	Delivery Offered - Livraison proposée
Vendor/Firm Name and Address Raison sociale et adresse du fournisseur/de l'entrepreneur	
Telephone No. - N° de téléphone Facsimile No. - N° de télécopieur	
Name and title of person authorized to sign on behalf of Vendor/Firm (type or print) Nom et titre de la personne autorisée à signer au nom du fournisseur/ de l'entrepreneur (taper ou écrire en caractères d'imprimerie)	
Signature	Date

Cette modification 02 est porté à répondre aux questions et de modifier l'invitation de la manière suivante:

1 - Questions / Réponses:

Q.01: Annexe C: Poste de travail Type 5 – Le code du panneau No. 1a-8 sur la liste « WS5 Consists of » est dupliqué. Le dessin typique de WS5 illustre le panneau 1a-9, qui n'est pas sur la liste. S'il-vous-plaît préciser.

R.01: La description de 1a-8 a été accidentellement dupliquée. Voir corrections dans les typiques actualisés.

Q.02: Annexe C: Poste de travail Type 6 – Le code du panneau No. 1a-8 sur la liste « WS6 Consists of » ne se trouve pas sur le dessin typique WS6. Le dessin typique de WS6 illustre le panneau 1a-3, qui n'est pas sur la liste. S'il-vous-plaît préciser.

R.02 :Un nouveau typique a été créé pour ce poste de travail afin de clarifier les conditions d'écrans.

Q.03 :Annexe C: Poste de travail Type 8 – Le code du panneau No. 1a-9 sur la liste « WS6 Consists of » ne se trouve pas sur le dessin typique WS8. S'il-vous-plaît confirmer si ce type de panneau est requis pour ce dessin typique.

R.03 :Un nouveau typique a été créé pour ce poste de travail afin de clarifier les conditions d'écrans.

2 – Modification(s) :

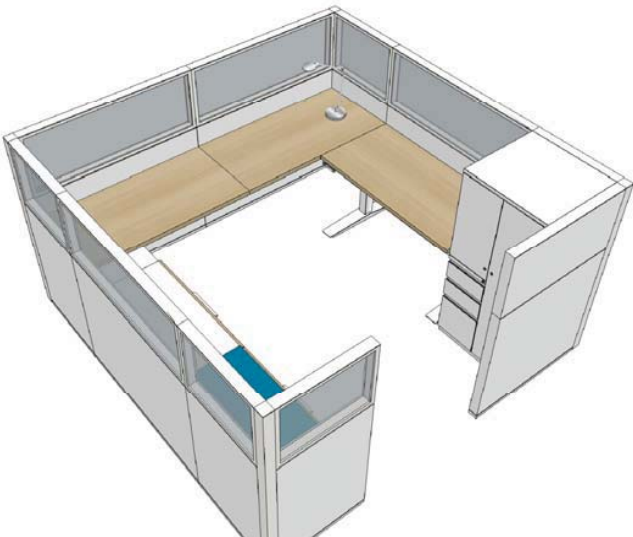
A) A Annexe C article 4 L'aménagement du poste de travail :

SUPPRIMER : Tous les typiques.

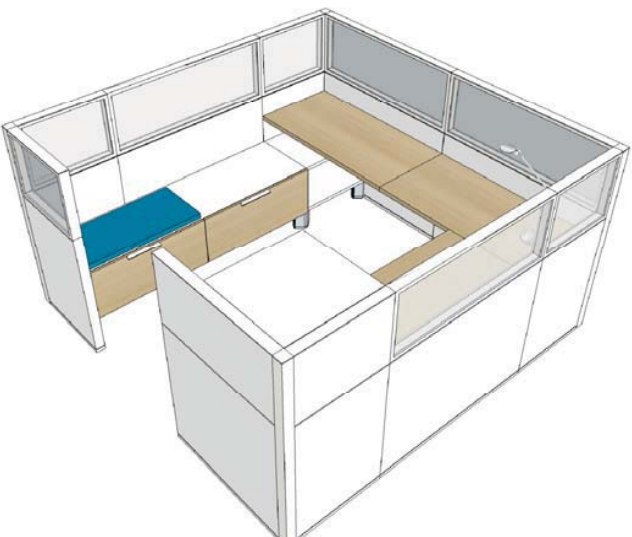
INSÉRER:

WORKSTATION TYPE 1

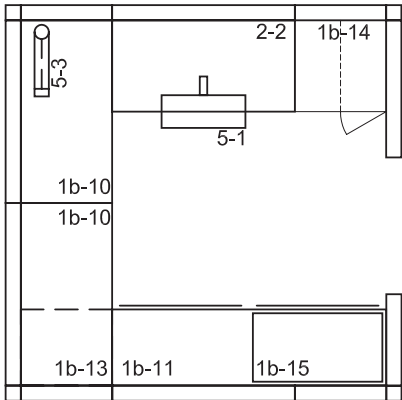
3D View:



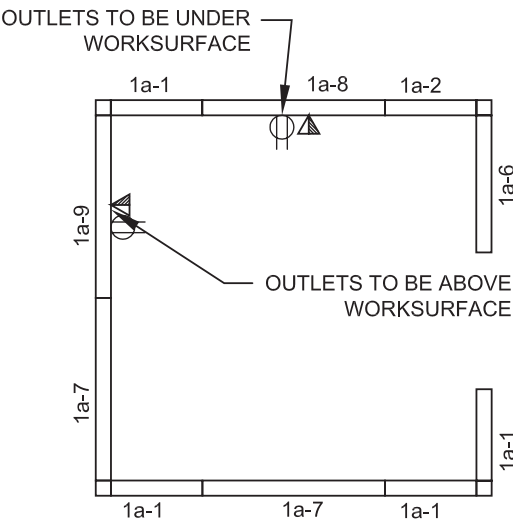
3D FOR REFERENCE ONLY



Workstation Type 1 Furniture Layout:



Workstation Type 2 Panel Layout:



FURNITURE TYPICALS - WORKSTATION 1
QTY: 4 - W405, W406, (W402, W414 MIRRORED)

MCROBIE
ARCHITECTS + INTERIOR DESIGNERS

56 SPARKS - 4TH FLOOR
SENATE OFFICE FIT-UP

scale	N/A
date	2017-04-17
drawn	TB
proj.	16-250

dwg no:	WS1
rev.	Page 1

WS1 Consists of

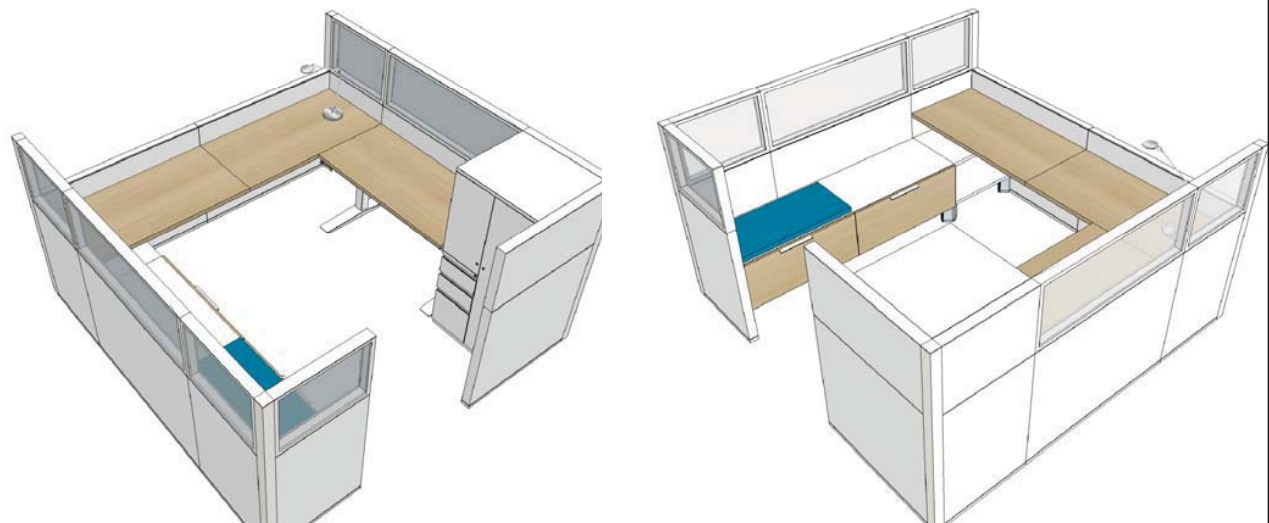
Code No.	Description
Category 1A	
1a-1	Seated Height Privacy Non-Powered Lower element 1&2: Fabric Upper element: clear glazing (includes frame and glazing) 610mm (24")
1a-2	Seated Height Privacy Non-Powered Lower element 1&2: Fabric Upper element 1&2: Fabric 610mm (24")
1a-6	Seated Height Privacy, Non-Powered Lower element 1&2: Fabric Upper element 1&2: Fabric 914mm (36")
1a-7	Seated Height Privacy Non-Powered Lower element 1&2: Fabric Upper element: clear glazing (includes frame and glazing) 1219mm (48")
1a-8	Seated Height Privacy Powered - below worksurface Lower element 1&2: Fabric Upper element: clear glazing (includes frame and glazing) 1219mm (48")
1a-9	Seated Height Privacy Powered - above worksurface Lower element 1&2: Fabric Upper element: clear glazing (includes frame and glazing) 1219mm (48")

WS1 Consists of

Code No.	Description
Category 1B, Catégorie 1B	
1b-10	Work Surface Panel Mounted High Pressure Laminate Rectangular 1220mm (48") x 610mm (24"), WSxxPMLHRxxxxxxx4824
1b-11	Storage Product Low Storage - Credenza Unit Storage Supported Laminate Rectangular Drawer-Drawer 1829mm (72") x 508mm (20"), SPLSSSLxRxxFFDDxx7220
1b-13	Storage Product Low Storage - Credenza Unit Storage Supported Laminate Rectangular Open Cupboard 610mm (24") x 508mm (20"), SPLSSSLxRxxxxOxxx2420
1b-14	Storage Product Personal Storage Tower Free standing Metal Hinged right Box, Box, File Closed-Drawer 1372mm (54") x 610mm (24") x 610mm (24"), SPPTFSMxxRH2FCD542424
1b-15	Seat Cushion Low-Storage - Credenza Unit Fabric Cushion Seat SPLSxxFAxxxxxCSxxxxxx
Category 2	
2-2	Sit/Stand Range Height Adjustable Work Surface Electrically Assisted 1219mm (48") x 610mm (24"), FSCEA4824
Category 5	
5-1	Keyboard Tray for 24"D surface Lever control Gel palm support KMSLCG24
5-3	Task Light Desk Base Type, TLDBT

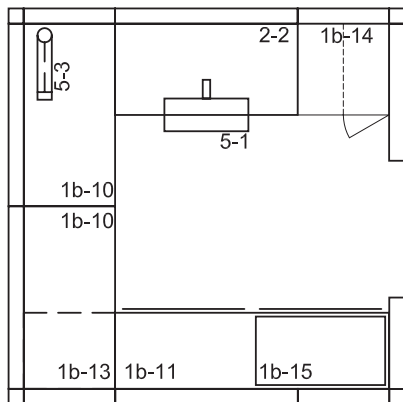
WORKSTATION TYPE 2

3D View:

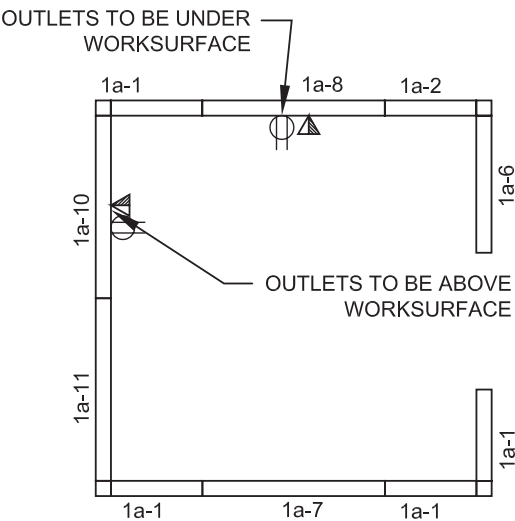


3D FOR REFERENCE ONLY

Workstation Type 2 Furniture Layout:



Workstation Type 2 Panel Layout:



FURNITURE TYPICALS - WORKSTATION 2
QTY: 2 - W407, W408

MCROBIE
ARCHITECTS + INTERIOR DESIGNERS

56 SPARKS - 4TH FLOOR
SENATE OFFICE FIT-UP

scale	N/A
date	2017-04-17
drawn	TB
proj.	16-250

dwg no:	WS2
rev.	Page 4

WS2 Consists of

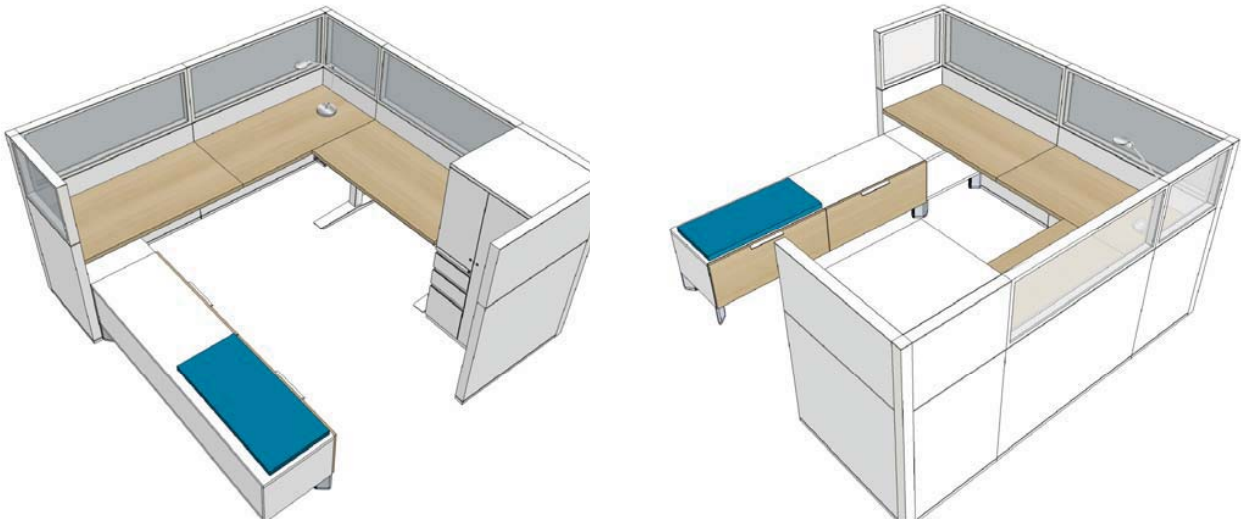
Code No.	Description
Category 1A	
1a-1	Seated Height Privacy Non-Powered Lower element 1&2: Fabric Upper element: clear glazing (includes frame and glazing) 610mm (24")
1a-2	Seated Height Privacy Non-Powered Lower element 1&2: Fabric Upper element 1&2: Fabric 610mm (24")
1a-6	Seated Height Privacy, Non-Powered Lower element 1&2: Fabric Upper element 1&2: Fabric 914mm (36")
1a-7	Seated Height Privacy Non-Powered Lower element 1&2: Fabric Upper element: clear glazing (includes frame and glazing) 1219mm (48")
1a-8	Seated Height Privacy Powered - below worksurface Lower element 1&2: Fabric Upper element: clear glazing (includes frame and glazing) 1219mm (48")
1a-10	Base Height Powered - above worksurface Lower element 1&2: Fabric 1219mm (48")
1a-11	Base Height Non-Powered Lower element 1&2: Fabric 1219mm (48")

WS2 Consists of

Code No.	Description
Category 1B, Catégorie 1B	
1b-10	Work Surface Panel Mounted High Pressure Laminate Rectangular 1220mm (48") x 610mm (24"), WSxxPMLHRxxxxxxx4824
1b-11	Storage Product Low Storage - Credenza Unit Storage Supported Laminate Rectangular Drawer-Drawer 1829mm (72") x 508mm (20"), SPLSSSLxRxxFFDDxx7220
1b-13	Storage Product Low Storage - Credenza Unit Storage Supported Laminate Rectangular Open Cupboard 610mm (24") x 508mm (20"), SPLSSSLxRxxxxOxxx2420
1b-14	Storage Product Personal Storage Tower Free standing Metal Hinged right Box, Box, File Closed-Drawer 1372mm (54") x 610mm (24") x 610mm (24"), SPPTFSMxxRH2FCD542424
1b-15	Seat Cushion Low-Storage - Credenza Unit Fabric Cushion Seat SPLSxxFAxxxxxCSxxxxxx
Category 2	
2-2	Sit/Stand Range Height Adjustable Work Surface Electrically Assisted 1219mm (48") x 610mm (24"), FSCEA4824
Category 5	
5-1	Keyboard Tray for 24"D surface Lever control Gel palm support KMSLCG24
5-3	Task Light Desk Base Type, TLDBT

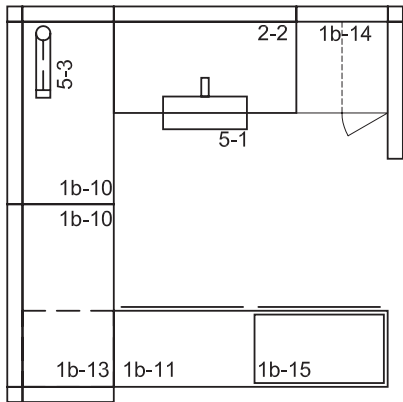
WORKSTATION TYPE 3

3D View:

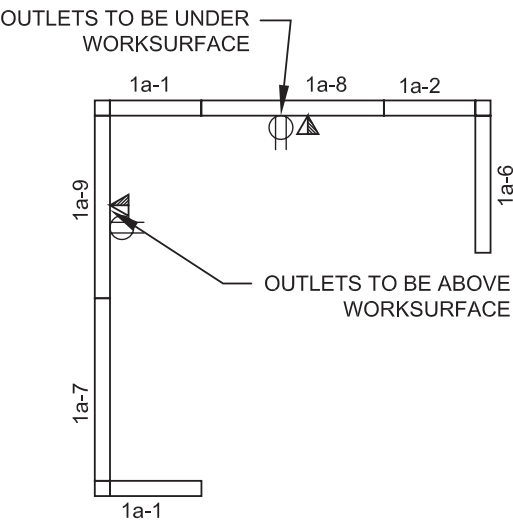


3D FOR REFERENCE ONLY

Workstation Type 3 Furniture Layout:



Workstation Type 3 Panel Layout:



FURNITURE TYPICALS - WORKSTATION 3
QTY: 2 - W401



56 SPARKS - 4TH FLOOR
SENATE OFFICE FIT-UP

scale	N/A
date	2017-04-17
drawn	TB
proj.	16-250

dwg no:	WS3
rev.	Page 7

WS3 Consists of

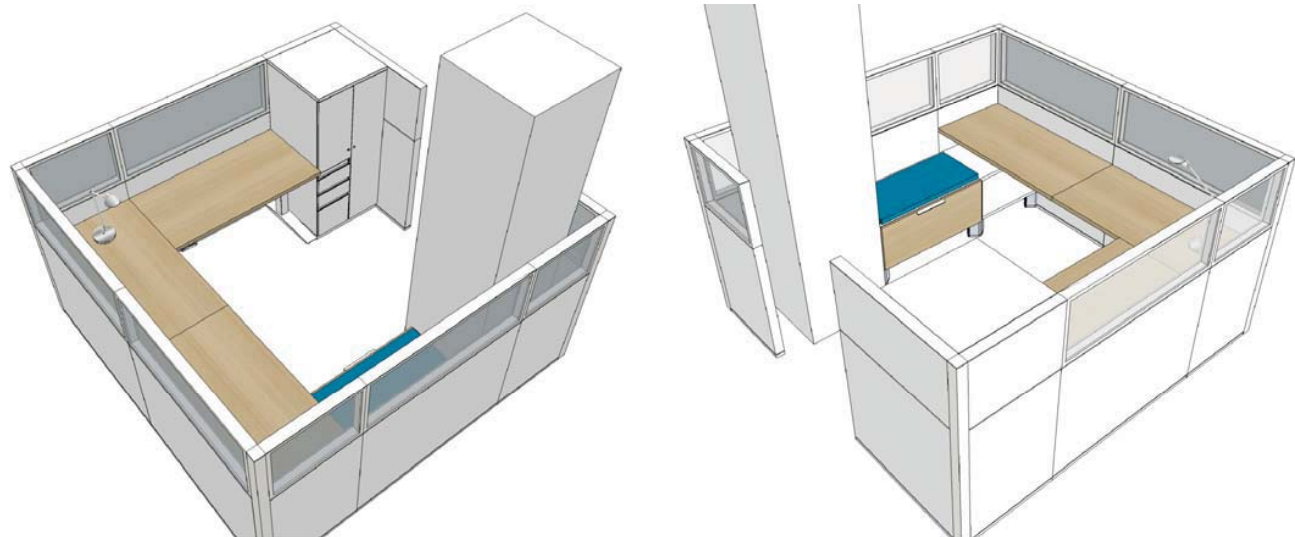
Code No.	Description
Category 1A	
1a-1	Seated Height Privacy Non-Powered Lower element 1&2: Fabric Upper element: clear glazing (includes frame and glazing) 610mm (24")
1a-2	Seated Height Privacy Non-Powered Lower element 1&2: Fabric Upper element 1&2: Fabric 610mm (24")
1a-6	Seated Height Privacy, Non-Powered Lower element 1&2: Fabric Upper element 1&2: Fabric 914mm (36")
1a-7	Seated Height Privacy Non-Powered Lower element 1&2: Fabric Upper element: clear glazing (includes frame and glazing) 1219mm (48")
1a-8	Seated Height Privacy Powered - below worksurface Lower element 1&2: Fabric Upper element: clear glazing (includes frame and glazing) 1219mm (48")
1a-9	Seated Height Privacy Powered - above worksurface Lower element 1&2: Fabric Upper element: clear glazing (includes frame and glazing) 1219mm (48")

WS3 Consists of

Code No.	Description
Category 1B, Catégorie 1B	
1b-10	Work Surface Panel Mounted High Pressure Laminate Rectangular 1220mm (48") x 610mm (24"), WSxxPMLHRxxxxxxx4824
1b-11	Storage Product Low Storage - Credenza Unit Storage Supported Laminate Rectangular Drawer-Drawer 1829mm (72") x 508mm (20"), SPLSSSLxRxxFFDDxx7220
1b-13	Storage Product Low Storage - Credenza Unit Storage Supported Laminate Rectangular Open Cupboard 610mm (24") x 508mm (20"), SPLSSSLxRxxxxOxxx2420
1b-14	Storage Product Personal Storage Tower Free standing Metal Hinged right Box, Box, File Closed-Drawer 1372mm (54") x 610mm (24") x 610mm (24"), SPPTFSMxxRH2FCD542424
1b-15	Seat Cushion Low-Storage - Credenza Unit Fabric Cushion Seat SPLSxxFAxxxxxCSxxxxxx
Category 2	
2-2	Sit/Stand Range Height Adjustable Work Surface Electrically Assisted 1219mm (48") x 610mm (24"), FSCEA4824
Category 5	
5-1	Keyboard Tray for 24"D surface Lever control Gel palm support KMSLCG24
5-3	Task Light Desk Base Type, TLDBT

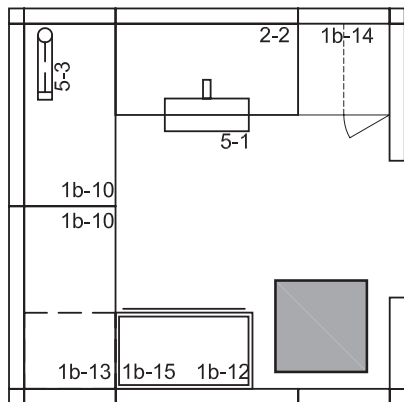
WORKSTATION TYPE 4

3D View:

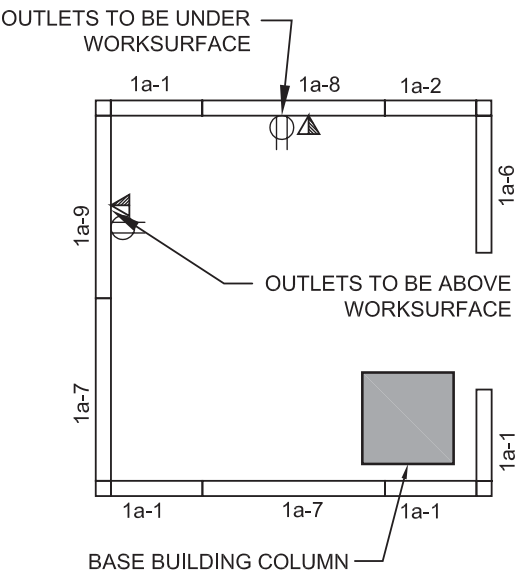


3D FOR REFERENCE ONLY

Workstation Type 4 Furniture Layout:



Workstation Type 4 Panel Layout:



FURNITURE TYPICALS - WORKSTATION 4
QTY: 1 - W412

MCROBIE
ARCHITECTS + INTERIOR DESIGNERS

56 SPARKS - 4TH FLOOR
SENATE OFFICE FIT-UP

scale	N/A
date	2017-04-17
drawn	TB
proj.	16-250

dwg no:	WS4
rev.	Page 10

WS4 Consists of

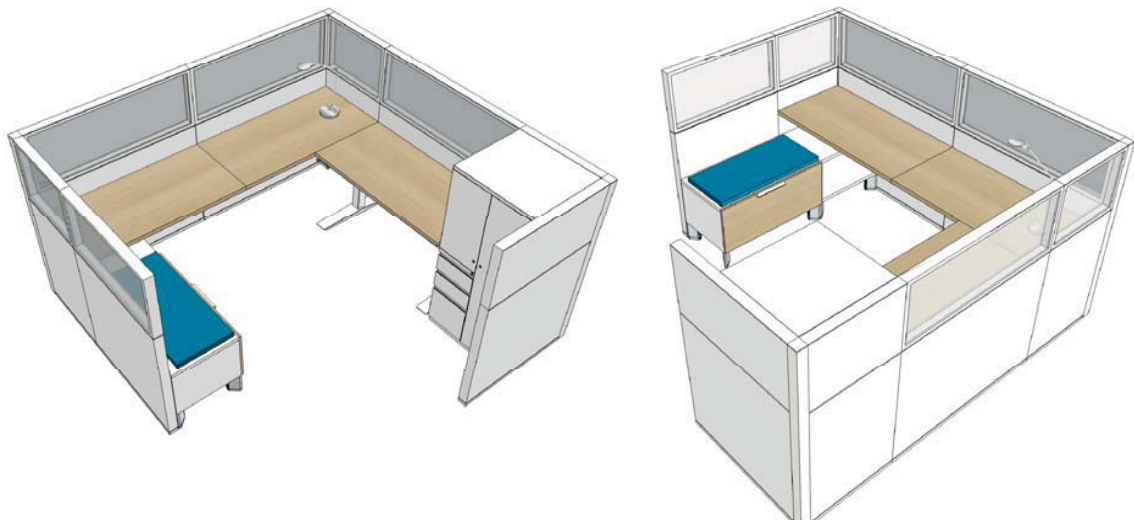
Code No.	Description
Category 1A	
1a-1	Seated Height Privacy Non-Powered Lower element 1&2: Fabric Upper element: clear glazing (includes frame and glazing) 610mm (24")
1a-2	Seated Height Privacy Non-Powered Lower element 1&2: Fabric Upper element 1&2: Fabric 610mm (24")
1a-6	Seated Height Privacy, Non-Powered Lower element 1&2: Fabric Upper element 1&2: Fabric 914mm (36")
1a-7	Seated Height Privacy Non-Powered Lower element 1&2: Fabric Upper element: clear glazing (includes frame and glazing) 1219mm (48")
1a-8	Seated Height Privacy Powered - below worksurface Lower element 1&2: Fabric Upper element: clear glazing (includes frame and glazing) 1219mm (48")
1a-9	Seated Height Privacy Powered - above worksurface Lower element 1&2: Fabric Upper element: clear glazing (includes frame and glazing) 1219mm (48")

WS4 Consists of

Code No.	Description
Category 1B, Catégorie 1B	
1b-10	Work Surface Panel Mounted High Pressure Laminate Rectangular 1220mm (48") x 610mm (24"), WSxxPMLHRxxxxxxx4824
1b-12	Storage Product Low Storage - Credenza Unit Storage Supported Laminate Rectangular Drawer-Drawer 915mm (36") x 508mm (20"), SPLSSSLxRxxFFDDxx3620
1b-13	Storage Product Low Storage - Credenza Unit Storage Supported Laminate Rectangular Open Cupboard 610mm (24") x 508mm (20"), SPLSSSLxRxxxxOxxx2420
1b-14	Storage Product Personal Storage Tower Free standing Metal Hinged right Box, Box, File Closed-Drawer 1372mm (54") x 610mm (24") x 610mm (24"), SPPTFSMxxRH2FCD542424
1b-15	Seat Cushion Low-Storage - Credenza Unit Fabric Cushion Seat SPLSxxFAxxxxxCSxxxxxx
Category 2	
2-2	Sit/Stand Range Height Adjustable Work Surface Electrically Assisted 1219mm (48") x 610mm (24"), FSCEA4824
Category 5	
5-1	Keyboard Tray for 24"D surface Lever control Gel palm support KMSLCG24
5-3	Task Light Desk Base Type, TLDBT

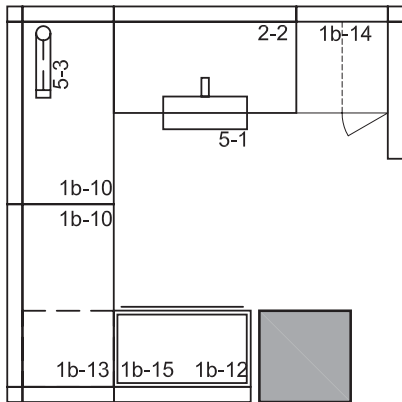
WORKSTATION TYPE 5

3D View:

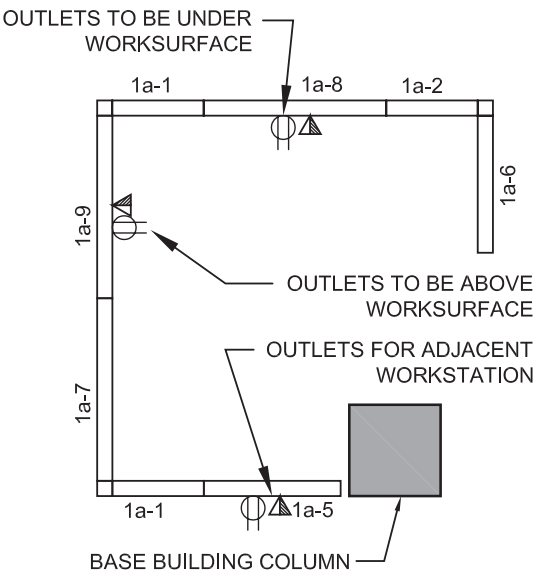


3D FOR REFERENCE ONLY

Workstation Type 5 Furniture Layout:



Workstation Type 5 Panel Layout:



FURNITURE TYPICALS - WORKSTATION 5
QTY: 1 - W409

MCROBIE
ARCHITECTS + INTERIOR DESIGNERS

56 SPARKS - 4TH FLOOR
SENATE OFFICE FIT-UP

scale	N/A
date	2017-04-17
drawn	TB
proj.	16-250

dwg no:	WS5
rev.	Page 13

WS5 Consists of

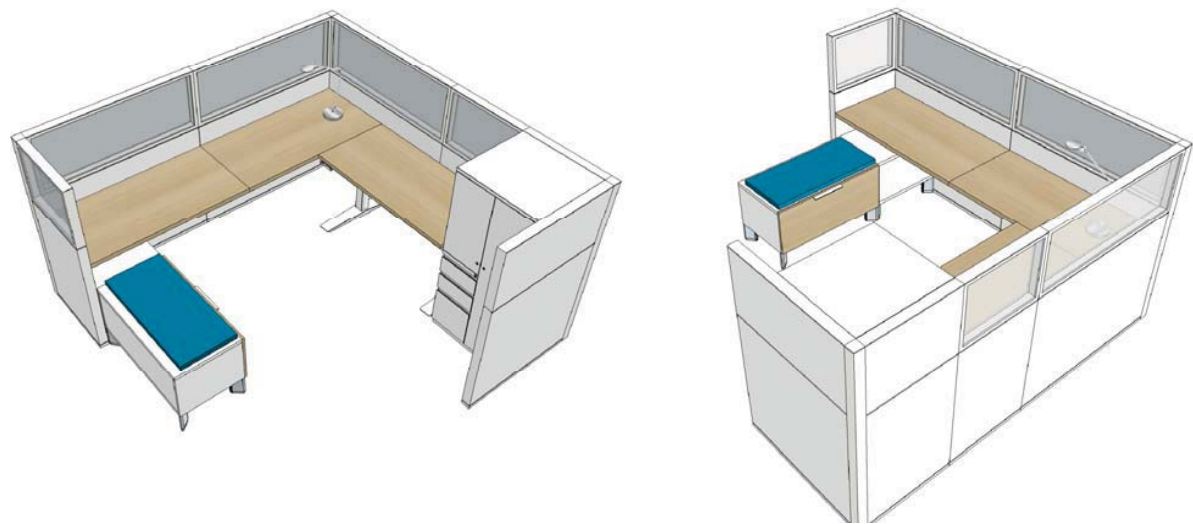
Code No.	Description
Category 1A	
1a-1	Seated Height Privacy Non-Powered Lower element 1&2: Fabric Upper element: clear glazing (includes frame and glazing) 610mm (24")
1a-2	Seated Height Privacy Non-Powered Lower element 1&2: Fabric Upper element 1&2: Fabric 610mm (24")
1a-5	Seated Height Privacy Powered - below worksurface Lower element 1&2: Fabric Upper element: clear glazing (includes frame and glazing) 915mm (36")
1a-6	Seated Height Privacy, Non-Powered Lower element 1&2: Fabric Upper element 1&2: Fabric 914mm (36")
1a-7	Seated Height Privacy Non-Powered Lower element 1&2: Fabric Upper element: clear glazing (includes frame and glazing) 1219mm (48")
1a-8	Seated Height Privacy Powered - below worksurface Lower element 1&2: Fabric Upper element: clear glazing (includes frame and glazing) 1219mm (48")
1a-9	Seated Height Privacy Powered - above worksurface Lower element 1&2: Fabric Upper element: clear glazing (includes frame and glazing) 1219mm (48")

WS5 Consists of

Code No.	Description
Category 1B, Catégorie 1B	
1b-10	Work Surface Panel Mounted High Pressure Laminate Rectangular 1220mm (48") x 610mm (24"), WSxxPMLHRxxxxxxx4824
1b-12	Storage Product Low Storage - Credenza Unit Storage Supported Laminate Rectangular Drawer-Drawer 915mm (36") x 508mm (20"), SPLSSSLxRxxFFDDxx3620
1b-13	Storage Product Low Storage - Credenza Unit Storage Supported Laminate Rectangular Open Cupboard 610mm (24") x 508mm (20"), SPLSSSLxRxxxxOxxx2420
1b-14	Storage Product Personal Storage Tower Free standing Metal Hinged right Box, Box, File Closed-Drawer 1372mm (54") x 610mm (24") x 610mm (24"), SPPTFSMxxRH2FCD542424
1b-15	Seat Cushion Low-Storage - Credenza Unit Fabric Cushion Seat SPLSxxFAxxxxxCSxxxxxx
Category 2	
2-2	Sit/Stand Range Height Adjustable Work Surface Electrically Assisted 1219mm (48") x 610mm (24"), FSCEA4824
Category 5	
5-1	Keyboard Tray for 24"D surface Lever control Gel palm support KMSLCG24
5-3	Task Light Desk Base Type, TLDBT

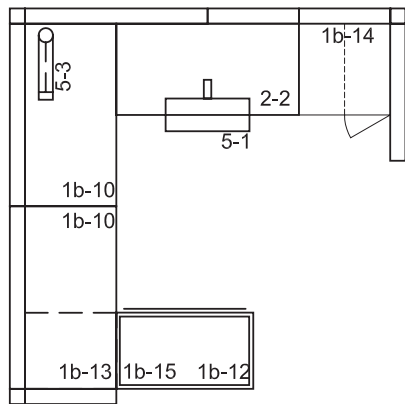
WORKSTATION TYPE 6

3D View:

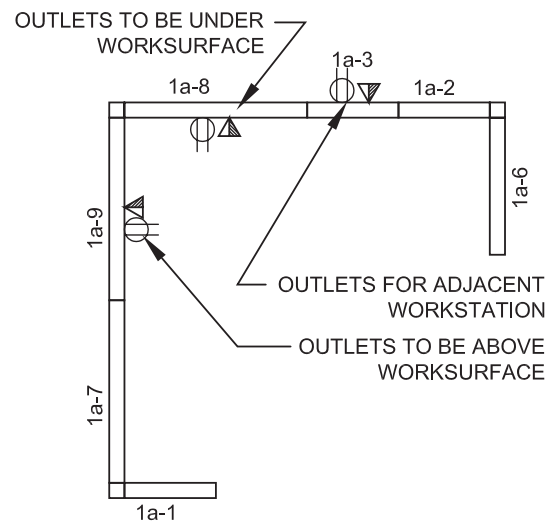


3D FOR REFERENCE ONLY

Workstation Type 6 Furniture Layout:



Workstation Type 6 Panel Layout:



FURNITURE TYPICALS - WORKSTATION 6
QTY: 1 - W404

MCROBIE
ARCHITECTS + INTERIOR DESIGNERS

56 SPARKS - 4TH FLOOR
SENATE OFFICE FIT-UP

scale	N/A
date	2017-04-17
drawn	TB
proj.	16-250

dwg no:	WS6
rev.	Page 16

WS6 Consists of

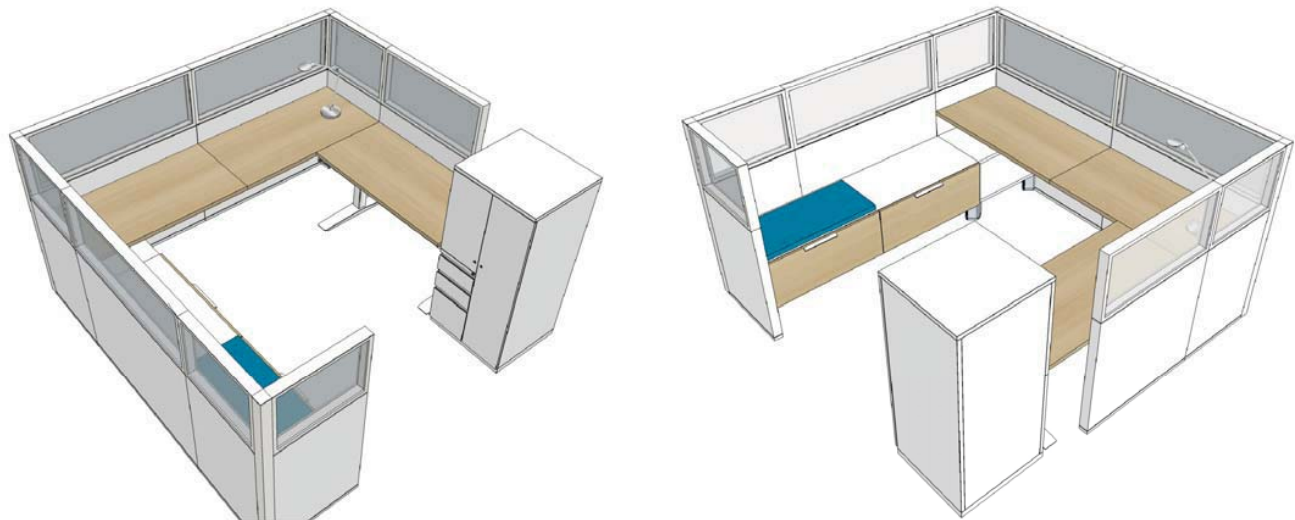
Code No.	Description
Category 1A	
1a-1	Seated Height Privacy Non-Powered Lower element 1&2: Fabric Upper element: clear glazing (includes frame and glazing) 610mm (24")
1a-2	Seated Height Privacy Non-Powered Lower element 1&2: Fabric Upper element 1&2: Fabric 610mm (24")
1a-3	Seated Height Privacy Powered - above worksurface Lower element 1&2: Fabric Upper element: clear glazing (includes frame and glazing) 610mm (24")
1a-6	Seated Height Privacy, Non-Powered Lower element 1&2: Fabric Upper element 1&2: Fabric 914mm (36")
1a-7	Seated Height Privacy Non-Powered Lower element 1&2: Fabric Upper element: clear glazing (includes frame and glazing) 1219mm (48")
1a-8	Seated Height Privacy Powered - below worksurface Lower element 1&2: Fabric Upper element: clear glazing (includes frame and glazing) 1219mm (48")
1a-9	Seated Height Privacy Powered - above worksurface Lower element 1&2: Fabric Upper element: clear glazing (includes frame and glazing) 1219mm (48")

WS6 Consists of

Code No.	Description
Category 1B, Catégorie 1B	
1b-10	Work Surface Panel Mounted High Pressure Laminate Rectangular 1220mm (48") x 610mm (24"), WSxxPMLHRxxxxxxx4824
1b-12	Storage Product Low Storage - Credenza Unit Storage Supported Laminate Rectangular Drawer-Drawer 915mm (36") x 508mm (20"), SPLSSSLxRxxFFDDxx3620
1b-13	Storage Product Low Storage - Credenza Unit Storage Supported Laminate Rectangular Open Cupboard 610mm (24") x 508mm (20"), SPLSSSLxRxxxxOxxx2420
1b-14	Storage Product Personal Storage Tower Free standing Metal Hinged right Box, Box, File Closed-Drawer 1372mm (54") x 610mm (24") x 610mm (24"), SPPTFSMxxRH2FCD542424
1b-15	Seat Cushion Low-Storage - Credenza Unit Fabric Cushion Seat SPLSxxFAxxxxxCSxxxxxx
Category 2	
2-2	Sit/Stand Range Height Adjustable Work Surface Electrically Assisted 1219mm (48") x 610mm (24"), FSCEA4824
Category 5	
5-1	Keyboard Tray for 24"D surface Lever control Gel palm support KMSLCG24
5-3	Task Light Desk Base Type, TLDBT

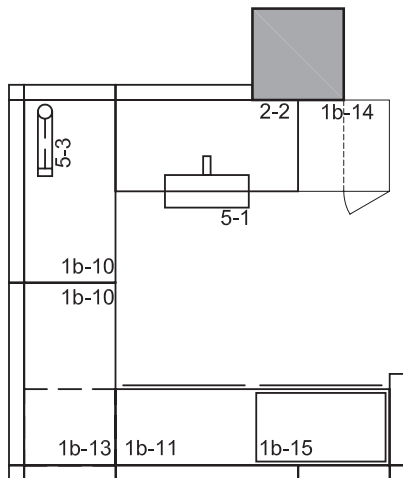
WORKSTATION TYPE 7

3D View:

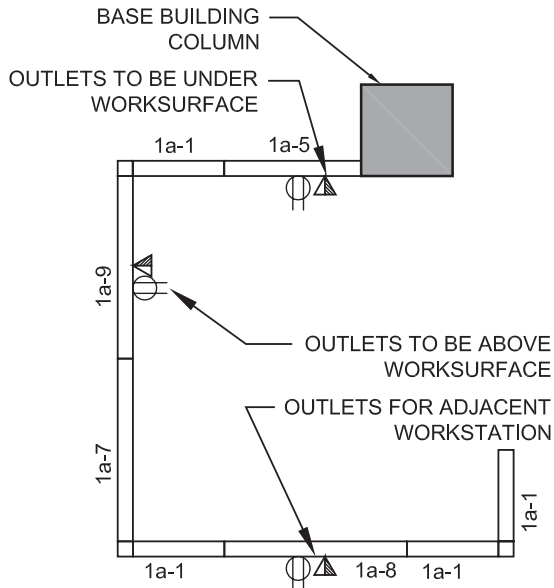


3D FOR REFERENCE ONLY

Workstation Type 7 Furniture Layout:



Workstation Type 7 Panel Layout:



FURNITURE TYPICALS - WORKSTATION 7
QTY: 1 - W410

MCROBIE
ARCHITECTS + INTERIOR DESIGNERS

56 SPARKS - 4TH FLOOR
SENATE OFFICE FIT-UP

scale	N/A
date	2017-04-17
drawn	TB
proj.	16-250

dwg no:	WS7
rev.	Page 19

WS7 Consists of

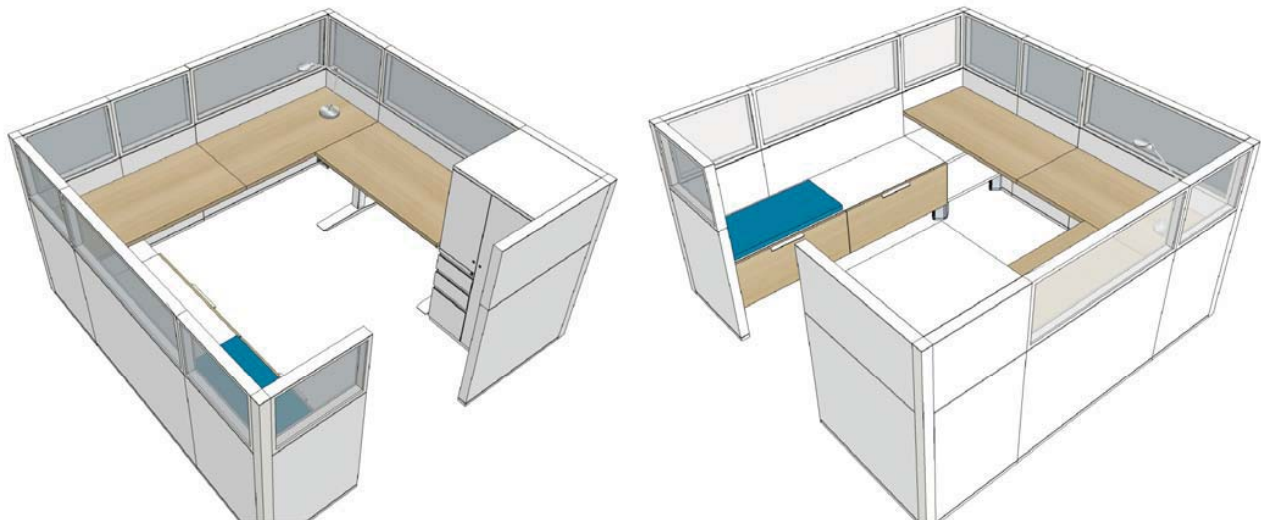
Code No.	Description
Category 1A	
1a-1	Seated Height Privacy Non-Powered Lower element 1&2: Fabric Upper element: clear glazing (includes frame and glazing) 610mm (24")
1a-5	Seated Height Privacy Powered - below worksurface Lower element 1&2: Fabric Upper element: clear glazing (includes frame and glazing) 915mm (36")
1a-7	Seated Height Privacy Non-Powered Lower element 1&2: Fabric Upper element: clear glazing (includes frame and glazing) 1219mm (48")
1a-8	Seated Height Privacy Powered - below worksurface Lower element 1&2: Fabric Upper element: clear glazing (includes frame and glazing) 1219mm (48")
1a-9	Seated Height Privacy Powered - above worksurface Lower element 1&2: Fabric Upper element: clear glazing (includes frame and glazing) 1219mm (48")

WS7 Consists of

Code No.	Description
Category 1B, Catégorie 1B	
1b-10	Work Surface Panel Mounted High Pressure Laminate Rectangular 1220mm (48") x 610mm (24"), WSxxPMLHRxxxxxxx4824
1b-11	Storage Product Low Storage - Credenza Unit Storage Supported Laminate Rectangular Drawer-Drawer 1829mm (72") x 508mm (20"), SPLSSSLxRxxFFDDxx7220
1b-13	Storage Product Low Storage - Credenza Unit Storage Supported Laminate Rectangular Open Cupboard 610mm (24") x 508mm (20"), SPLSSSLxRxxxxOxxx2420
1b-14	Storage Product Personal Storage Tower Free standing Metal Hinged right Box, Box, File Closed-Drawer 1372mm (54") x 610mm (24") x 610mm (24"), SPPTFSMxxRH2FCD542424
1b-15	Seat Cushion Low-Storage - Credenza Unit Fabric Cushion Seat SPLSxxFAxxxxxCSxxxxxx
Category 2	
2-2	Sit/Stand Range Height Adjustable Work Surface Electrically Assisted 1219mm (48") x 610mm (24"), FSCEA4824
Category 5	
5-1	Keyboard Tray for 24"D surface Lever control Gel palm support KMSLCG24
5-3	Task Light Desk Base Type, TLDBT

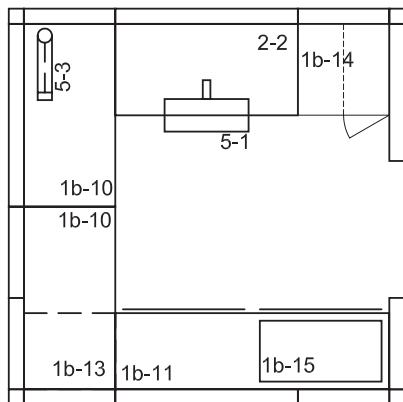
WORKSTATION TYPE 8

3D View:

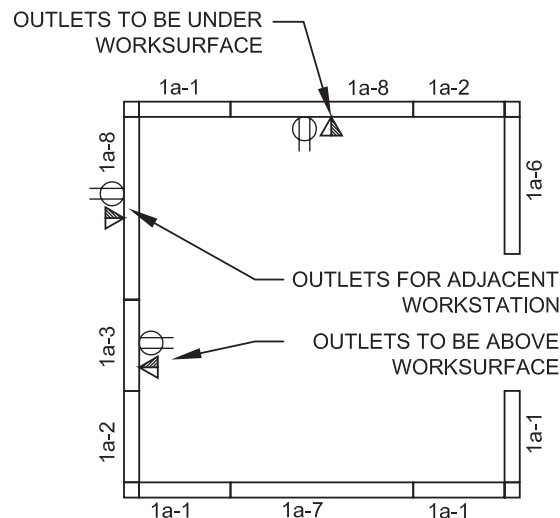


3D FOR REFERENCE ONLY

Workstation Type 8 Furniture Layout:



Workstation Type 8 Panel Layout:



FURNITURE TYPICALS - WORKSTATION 8
QTY: 1 - W411

MCROBIE
ARCHITECTS + INTERIOR DESIGNERS

56 SPARKS - 4TH FLOOR
SENATE OFFICE FIT-UP

scale	N/A
date	2017-04-17
drawn	TB
proj.	16-250

dwg no:	WS8
rev.	Page 22

WS8 Consists of

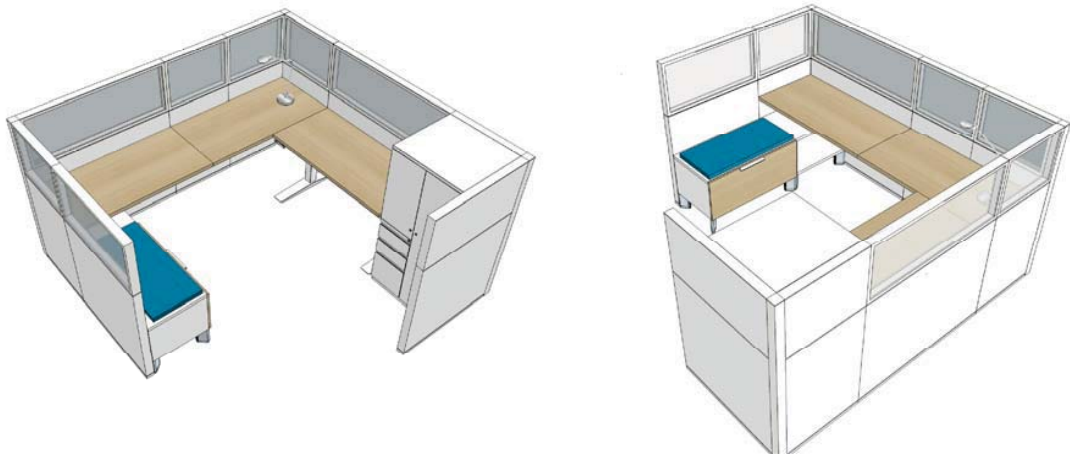
Code No.	Description
Category 1A	
1a-1	Seated Height Privacy Non-Powered Lower element 1&2: Fabric Upper element: clear glazing (includes frame and glazing) 610mm (24")
1a-2	Seated Height Privacy Non-Powered Lower element 1&2: Fabric Upper element 1&2: Fabric 610mm (24")
1a-3	Seated Height Privacy Powered - above worksurface Lower element 1&2: Fabric Upper element: clear glazing (includes frame and glazing) 610mm (24")
1a-6	Seated Height Privacy, Non-Powered Lower element 1&2: Fabric Upper element 1&2: Fabric 914mm (36")
1a-7	Seated Height Privacy Non-Powered Lower element 1&2: Fabric Upper element: clear glazing (includes frame and glazing) 1219mm (48")
1a-8	Seated Height Privacy Powered - below worksurface Lower element 1&2: Fabric Upper element 1&2: clear glazing (includes frame and glazing) 1219mm (48")

WS8 Consists of

Code No.	Description
Category 1B, Catégorie 1B	
1b-10	Work Surface Panel Mounted High Pressure Laminate Rectangular 1220mm (48") x 610mm (24"), WSxxPMLHRxxxxxxx4824
1b-11	Storage Product Low Storage - Credenza Unit Storage Supported Laminate Rectangular Drawer-Drawer 1829mm (72") x 508mm (20"), SPLSSSLxRxxFFDDxx7220
1b-13	Storage Product Low Storage - Credenza Unit Storage Supported Laminate Rectangular Open Cupboard 610mm (24") x 508mm (20"), SPLSSSLxRxxxxOxxx2420
1b-14	Storage Product Personal Storage Tower Free standing Metal Hinged right Box, Box, File Closed-Drawer 1372mm (54") x 610mm (24") x 610mm (24"), SPPTFSMxxRH2FCD542424
1b-15	Seat Cushion Low-Storage - Credenza Unit Fabric Cushion Seat SPLSxxFAxxxxxCSxxxxxx
Category 2	
2-2	Sit/Stand Range Height Adjustable Work Surface Electrically Assisted 1219mm (48") x 610mm (24"), FSCEA4824
Category 5	
5-1	Keyboard Tray for 24"D surface Lever control Gel palm support KMSLCG24
5-3	Task Light Desk Base Type, TLDBT

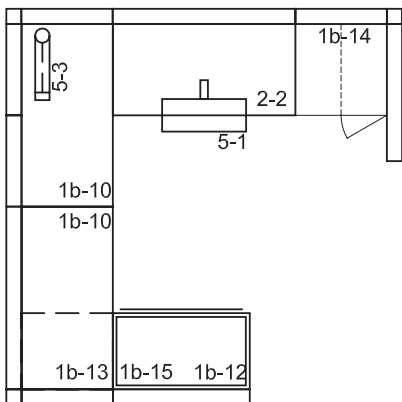
WORKSTATION TYPE 9

3D View:

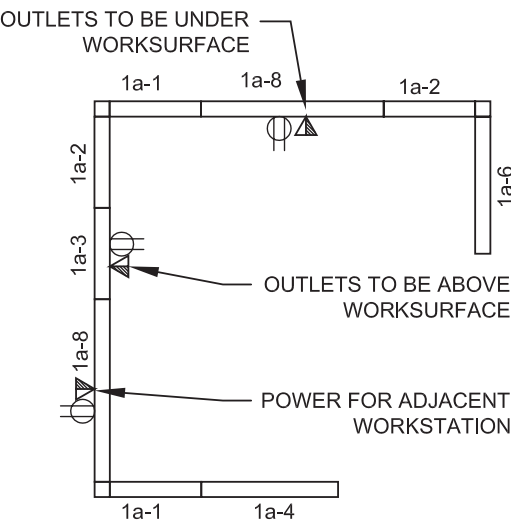


3D FOR REFERENCE ONLY

Workstation Type 9 Furniture Layout:



Workstation Type 9 Panel Layout:



FURNITURE TYPICALS - WORKSTATION 9
QTY: 1 - W403

MCROBIE
ARCHITECTS + INTERIOR DESIGNERS

56 SPARKS - 4TH FLOOR
SENATE OFFICE FIT-UP

scale	N/A
date	2017-05-04
drawn	TB
proj.	16-250

dwg no:	WS9
rev.	Page 25

WS9 Consists of

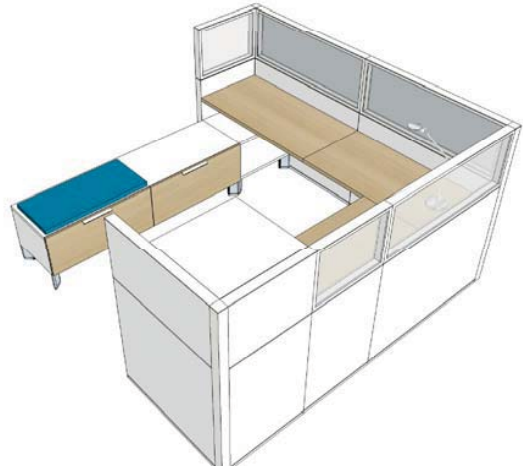
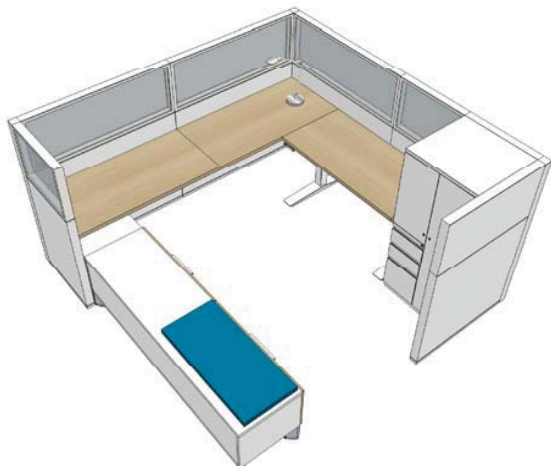
Code No.	Description
Category 1A	
1a-1	Seated Height Privacy Non-Powered Lower element 1&2: Fabric Upper element: clear glazing (includes frame and glazing) 610mm (24")
1a-2	Seated Height Privacy Non-Powered Lower element 1&2: Fabric Upper element 1&2: Fabric 610mm (24")
1a-3	Seated Height Privacy Powered - above worksurface Lower element 1&2: Fabric Upper element: clear glazing (includes frame and glazing) 610mm (24")
1a-4	Seated Height Privacy Non-Powered Lower element 1&2: Fabric Upper element: clear glazing (includes frame and glazing) 915mm (36")
1a-6	Seated Height Privacy, Non-Powered Lower element 1&2: Fabric Upper element 1&2: Fabric 914mm (36")
1a-8	Seated Height Privacy Powered - below worksurface Lower element 1&2: Fabric Upper element 1&2: clear glazing (includes frame and glazing) 1219mm (48")

WS9 Consists of

Code No.	Description
Category 1B, Catégorie 1B	
1b-10	Work Surface Panel Mounted High Pressure Laminate Rectangular 1220mm (48") x 610mm (24"), WSxxPMLHRxxxxxxx4824
1b-12	Storage Product Low Storage - Credenza Unit Storage Supported Laminate Rectangular Drawer-Drawer 915mm (36") x 508mm (20"), SPLSSSLxRxxFFDDxx3620
1b-13	Storage Product Low Storage - Credenza Unit Storage Supported Laminate Rectangular Open Cupboard 610mm (24") x 508mm (20"), SPLSSSLxRxxxxOxxx2420
1b-14	Storage Product Personal Storage Tower Free standing Metal Hinged right Box, Box, File Closed-Drawer 1372mm (54") x 610mm (24") x 610mm (24"), SPPTFSMxxRH2FCD542424
1b-15	Seat Cushion Low-Storage - Credenza Unit Fabric Cushion Seat SPLSxxFAxxxxxCSxxxxxx
Category 2	
2-2	Sit/Stand Range Height Adjustable Work Surface Electrically Assisted 1219mm (48") x 610mm (24"), FSCEA4824
Category 5	
5-1	Keyboard Tray for 24"D surface Lever control Gel palm support KMSLCG24
5-3	Task Light Desk Base Type, TLDBT

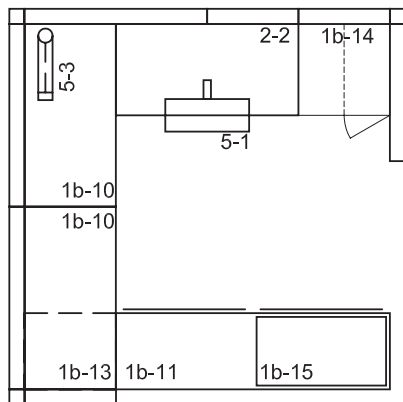
WORKSTATION TYPE 10

3D View:

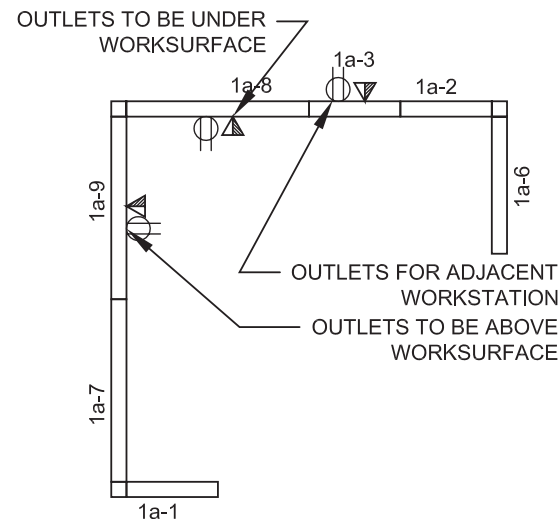


3D FOR REFERENCE ONLY

Workstation Type 10 Furniture Layout:



Workstation Type 10 Panel Layout:



FURNITURE TYPICALS - WORKSTATION 10
QTY: 1 - W413

MCROBIE
ARCHITECTS + INTERIOR DESIGNERS

56 SPARKS - 4TH FLOOR
SENATE OFFICE FIT-UP

scale	N/A
date	2017-05-04
drawn	TB
proj.	16-250

dwg no:	WS10
rev.	Page 28

WS10 Consists of

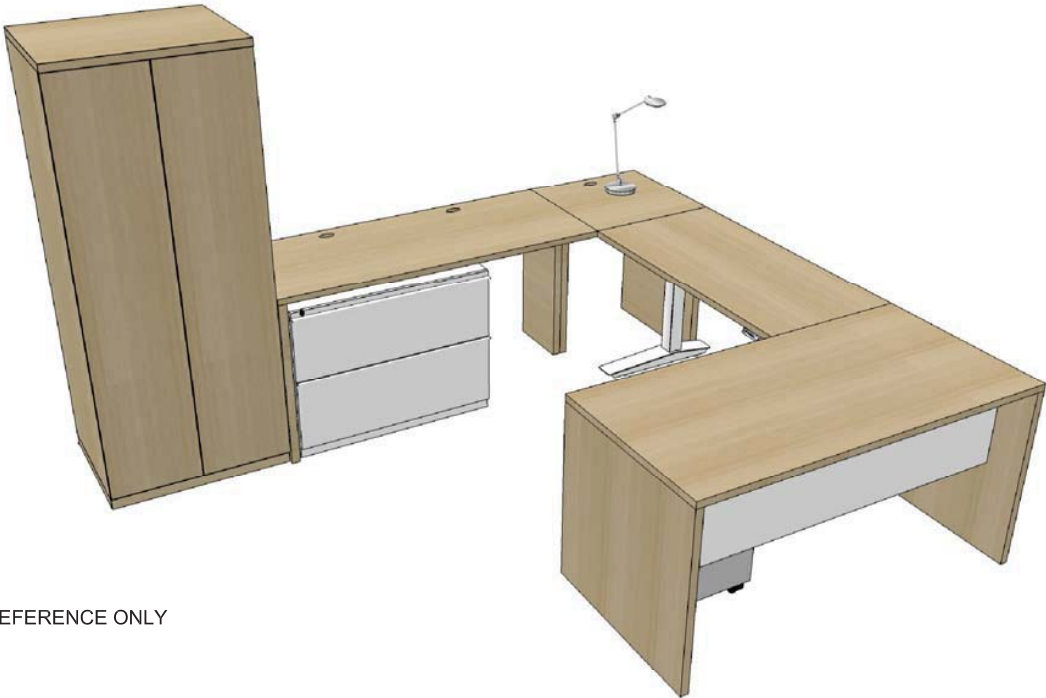
Code No.	Description
Category 1A	
1a-1	Seated Height Privacy Non-Powered Lower element 1&2: Fabric Upper element: clear glazing (includes frame and glazing) 610mm (24")
1a-2	Seated Height Privacy Non-Powered Lower element 1&2: Fabric Upper element 1&2: Fabric 610mm (24")
1a-3	Seated Height Privacy Powered - above worksurface Lower element 1&2: Fabric Upper element: clear glazing (includes frame and glazing) 610mm (24")
1a-6	Seated Height Privacy, Non-Powered Lower element 1&2: Fabric Upper element 1&2: Fabric 914mm (36")
1a-7	Seated Height Privacy Non-Powered Lower element 1&2: Fabric Upper element: clear glazing (includes frame and glazing) 1219mm (48")
1a-8	Seated Height Privacy Powered - below worksurface Lower element 1&2: Fabric Upper element 1&2: clear glazing (includes frame and glazing) 1219mm (48")
1a-9	Seated Height Privacy Powered - above worksurface Lower element 1&2: Fabric Upper element: clear glazing (includes frame and glazing) 1219mm (48")

WS10 Consists of

Code No.	Description
Category 1B, Catégorie 1B	
1b-10	Work Surface Panel Mounted High Pressure Laminate Rectangular 1220mm (48") x 610mm (24"), WSxxPMLHRxxxxxxx4824
1b-11	Storage Product Low Storage - Credenza Unit Storage Supported Laminate Rectangular Drawer-Drawer 1829mm (72") x 508mm (20"), SPLSSSLxRxxFFDDxx7220
1b-13	Storage Product Low Storage - Credenza Unit Storage Supported Laminate Rectangular Open Cupboard 610mm (24") x 508mm (20"), SPLSSSLxRxxxxOxxx2420
1b-14	Storage Product Personal Storage Tower Free standing Metal Hinged right Box, Box, File Closed-Drawer 1372mm (54") x 610mm (24") x 610mm (24"), SPPTFSMxxRH2FCD542424
1b-15	Seat Cushion Low-Storage - Credenza Unit Fabric Cushion Seat SPLSxxFAxxxxxCSxxxxxx
Category 2	
2-2	Sit/Stand Range Height Adjustable Work Surface Electrically Assisted 1219mm (48") x 610mm (24"), FSCEA4824
Category 5	
5-1	Keyboard Tray for 24"D surface Lever control Gel palm support KMSLCG24
5-3	Task Light Desk Base Type, TLDBT

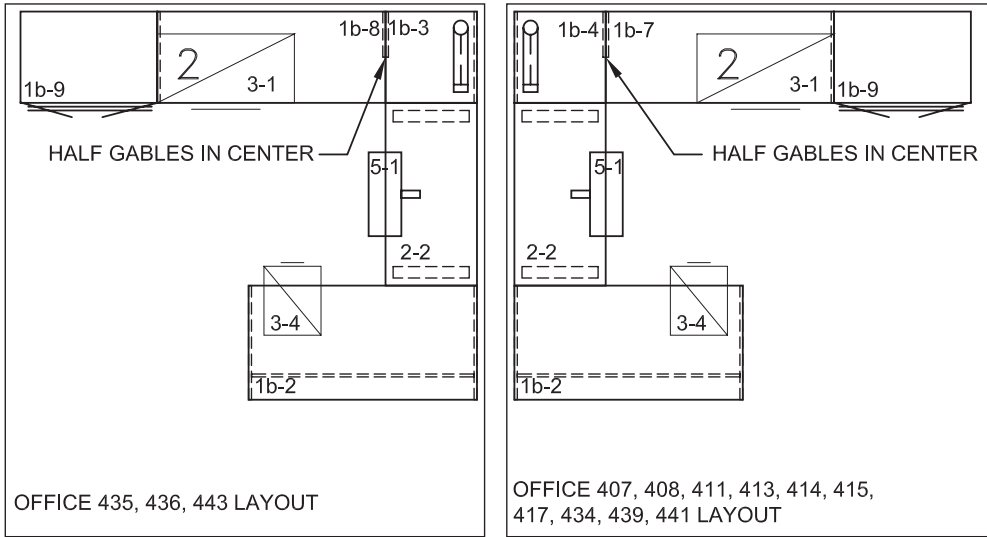
OFFICE TYPE 1A

3D View:



3D FOR REFERENCE ONLY

Office Type 1A Furniture Layout:



- FURNITURE NOTES:
1. KEYBOARD TRAY TO BE INSTALLED ON 1b-2 IN OFFICES 407, 408, 434, 435, 436, 439, 441, AND 443. MOBILE PED. TO BE STORED UNDER 2-2 1b-9 TO BE LOCATED IN OPPOSITE CORNER, REFER TO FURNITURE PLANS
 - 2.

FURNITURE TYPICALS - OFFICE TYPICAL 1A
QTY: 13 - 407, 408, 411, 413, 414, 415, 417, 434, 435, 436, 439, 441, 443

MCROBIE
ARCHITECTS + INTERIOR DESIGNERS

56 SPARKS - 4TH FLOOR
SENATE OFFICE FIT-UP

scale	N/A
date	2017-04-17
drawn	TB
proj.	16-250

dwg no:	OFF1A
rev.	Page 31

OFF1A Consists of

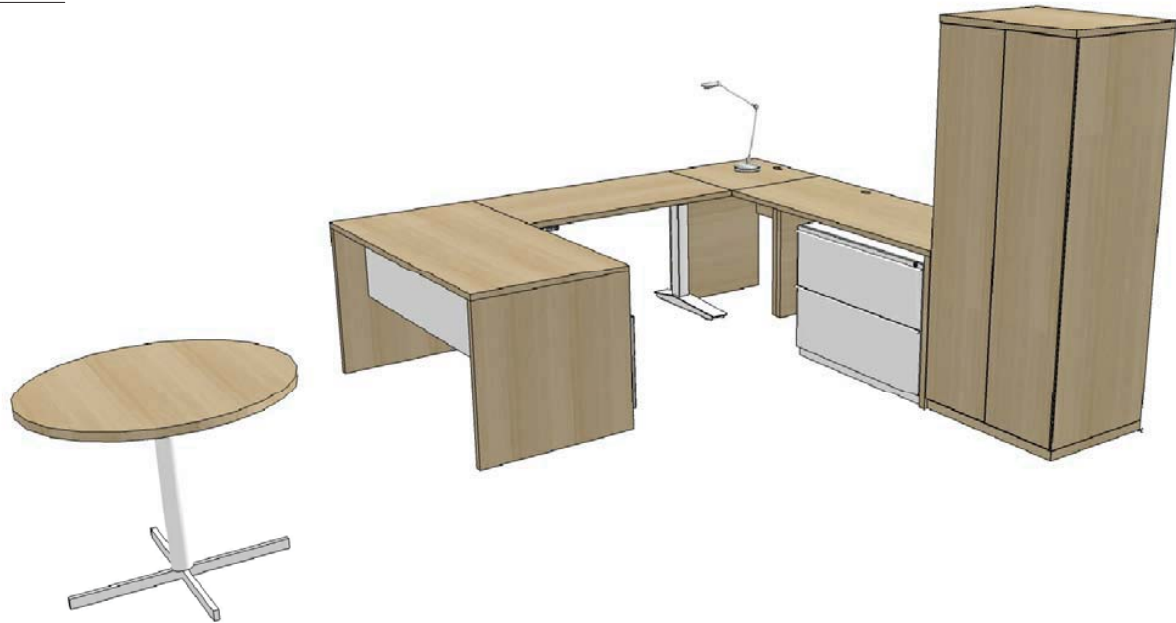
Code No.	Description
Category 1B	
1b-2	Work Surface 2 Full gables (w/modesty) High Pressure Laminate Rectangular 1524mm (60") x 762mm (30"), WSxxGGLHRxxxxxxx6030
1b-3	Work Surface 1 Half, 1 Full Gable (w/modesty) - <i>installed RH</i> High Pressure Laminate Rectangular 610mm (24") x 610mm (24"), WSxxHGLHRxxxxxxx2424 for Offices: 435, 436, 443
1b-4	Work Surface 1 Half, 1 Full Gable (w/modesty) - <i>installed LH</i> High Pressure Laminate Rectangular 610mm (24") x 610mm (24"), WSxxHGLHRxxxxxxx2424 for Offices: 407, 408, 411, 413, 414, 415, 417, 434, 439, 441
1b-7	Work Surface 1 Half, 1 Full Gable (w/modesty) - <i>installed RH</i> High Pressure Laminate Rectangular 1524mm (60") x 610mm (24"), WSxxHGLHRxxxxxxx6024 for Offices: 407, 408, 411, 413, 414, 415, 417, 434, 439, 441
1b-8	Work Surface 1 Half, 1 Full Gable (w/modesty) - <i>installed LH</i> High Pressure Laminate Rectangular 1524mm (60") x 610mm (24"), WSxxHGLHRxxxxxxx6024 for Offices: 435, 436, 443
1b-9	Storage Products Wardrobe Freestanding Laminate Two Hinged Doors Closed Cupboard 914mm (36") x 610mm (24") x 1829mm (72"), SPWAFSLxxDDxxCx723624
Category 2	
2-2	Sit/Stand Range Height Adjustable Work Surface Electrically Assisted 1219mm (48") x 610mm (24"), FSCEA4824
Category 3	
3-1	Locking Lateral Filing Cabinets Two (2) fixed front drawers 914mm (36") x 457mm (18"), LLFC2DFDxxx1836xxx
3-4	Pedestals Mobile with Locking casters, depth 559mm (22") Box, File PEDSMCL22xxBFxxxxxx
Category 5	

OFF1A Consists of

Code No.	Description
5-1	Keyboard Tray for 24"D surface Lever control Gel palm support KMSLCG24 - for offices 411, 413, 414, 415, 417
5-2	Keyboard Tray for 30"D surface Lever control Gel palm support KMSLCG30 - for offices 407, 408, 434, 435, 436, 439, 441, 443
5-3	Task Light, Desk Base Type, TLDBT

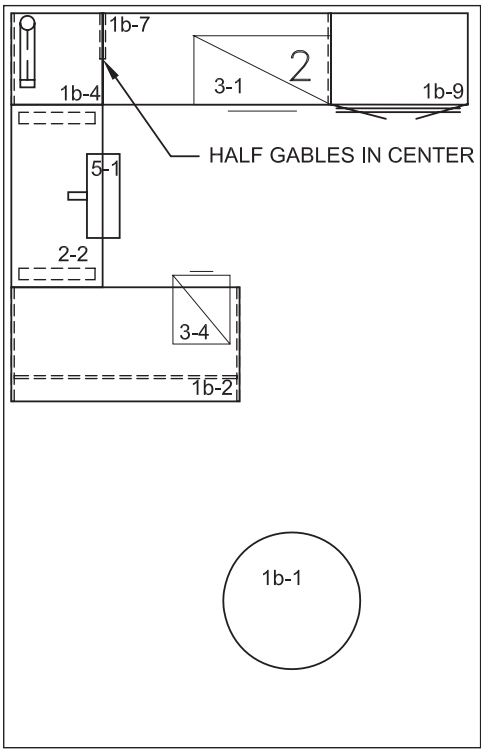
OFFICE TYPE 1B

3D View:



3D FOR REFERENCE ONLY

Office Type 1B Furniture Layout:



FURNITURE TYPICALS - OFFICE TYPICAL 1B
QTY: 1 - 410

MCROBIE
ARCHITECTS + INTERIOR DESIGNERS

56 SPARKS - 4TH FLOOR
SENATE OFFICE FIT-UP

scale	N/A
date	2017-04-17
drawn	TB
proj.	16-250

dwg no:	OFF1B
rev.	Page 34

OFF1B Consists of

Code No.	Description
Category 1B	
1b-1	Meeting Table Star-cross Base Laminate Round 914mm (36"), MTxxSCLxDxxxxxxxx36xx
1b-2	Work Surface 2 Full gables (w/modesty) High Pressure Laminate Rectangular 1524mm (60") x 762mm (30"), WSxxGGLHRxxxxxxxx6030
1b-4	Work Surface 1 Half, 1 Full Gable (w/modesty) - <i>installed LH</i> High Pressure Laminate Rectangular 610mm (24") x 610mm (24"), WSxxHGLHRxxxxxxxx2424 for Offices: 407, 408, 411, 413, 414, 415, 417, 434, 439, 441
1b-7	Work Surface 1 Half, 1 Full Gable (w/modesty) - <i>installed RH</i> High Pressure Laminate Rectangular 1524mm (60") x 610mm (24"), WSxxHGLHRxxxxxxxx6024 for Offices: 407, 408, 411, 413, 414, 415, 417, 434, 439, 441
1b-9	Storage Products Wardrobe Freestanding Laminate Two Hinged Doors Closed Cupboard 914mm (36") x 610mm (24") x 1829mm (72"), SPWAFSLxxDDxxCx723624
Category 2	
2-2	Sit/Stand Range Height Adjustable Work Surface Electrically Assisted 1219mm (48") x 610mm (24"), FSCAEA4824
Category 3	
3-1	Locking Lateral Filing Cabinets Two (2) fixed front drawers 914mm (36") x 457mm (18"), LLFC2DFDxxx1836xxx
3-4	Pedestals Mobile with Locking casters, depth 559mm (22") Box, File PEDSMCL22xxBFxxxxxx
Category 5	
5-1	Keyboard Tray for 24"D surface Lever control Gel palm support KMSLCG24 - for offices 411, 413, 414, 415, 417
5-3	Task Light, Desk Base Type, TLDBT

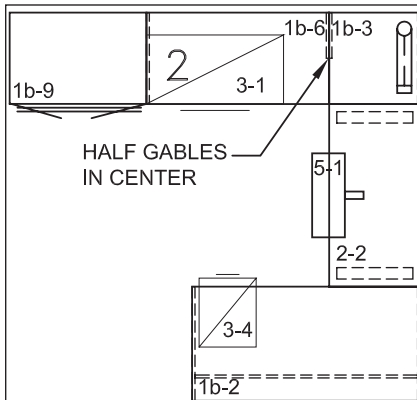
OFFICE TYPE 2A

3D View:

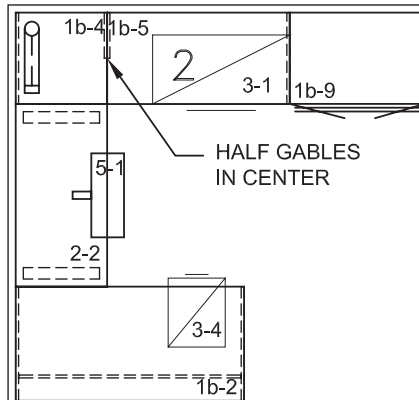


3D FOR REFERENCE ONLY

Office Type 2A Furniture Layout:



OFFICE 427, 428, 430, 444 LAYOUT



OFFICE 418, 429, 442 LAYOUT

FURNITURE NOTES:

1. KEYBOARD TRAY TO BE INSTALLED ON 1b-2 IN OFFICES 418, MOBILE PED TO BE STORED UNDER 2-2
2. 1b-9 NOT REQUIRED IN OFFICE 429 AND 430

FURNITURE TYPICALS - OFFICE TYPICAL 2A
QTY: 7 - 418, 427, 428, 429, 430, 442, 444

MCROBIE
ARCHITECTS + INTERIOR DESIGNERS

56 SPARKS - 4TH FLOOR
SENATE OFFICE FIT-UP

scale	N/A
date	2017-04-17
drawn	TB
proj.	16-250

dwg no:	OFF2A
rev.	Page 36

56 Sparks - 4th Floor

OFF2A Consists of

Code No.	Description
Category 1B	
1b-2	Work Surface 2 Full gables (w/modesty) High Pressure Laminate Rectangular 1524mm (60") x 762mm (30"), WSxxGGLHRxxxxxxx6030
1b-3	Work Surface 1 Half, 1 Full Gable (w/modesty) - <i>installed RH</i> High Pressure Laminate Rectangular 610mm (24") x 610mm (24"), WSxxHGLHRxxxxxxx2424 for Offices: 427, 428, 430, 444
1b-4	Work Surface 1 Half, 1 Full Gable (w/modesty) - <i>installed LH</i> High Pressure Laminate Rectangular 610mm (24") x 610mm (24"), WSxxHGLHRxxxxxxx2424 for Offices: 418, 429, 442
1b-5	Work Surface 1 Half, 1 Full Gable (w/modesty) - <i>installed RH</i> High Pressure Laminate Rectangular 1220mm (48") x 610mm (24"), WSxxHGLHRxxxxxxx4824 for Offices: 418, 429, 442
1b-6	Work Surface 1 Half, 1 Full Gable (w/modesty) - <i>installed LH</i> High Pressure Laminate Rectangular 1220mm (48") x 610mm (24"), WSxxHGLHRxxxxxxx4824 for Offices: 427, 428, 430, 444
1b-9	Storage Products Wardrobe Freestanding Laminate Two Hinged Doors Closed Cupboard 914mm (36") x 610mm (24") x 1829mm (72"), SPWAFSLxxDDxxCx723624
Category 2	
2-2	Sit/Stand Range Height Adjustable Work Surface Electrically Assisted 1219mm (48") x 610mm (24"), FSCEA4824
Category 3	
3-1	Locking Lateral Filing Cabinets Two (2) fixed front drawers 914mm (36") x 457mm (18"), LLFC2DFDxxx1836xxx
3-4	Pedestals Mobile with Locking casters, depth 559mm (22") Box, File PEDSMCL22xxBFxxxxxx
Category 5	

OFF2A Consists of

Code No.	Description
5-1	Keyboard Tray for 24"D surface Lever control Gel palm support KMSLCG24 - for offices 427, 428, 430, 444, 429, 442
5-2	Keyboard Tray for 30"D surface Lever control Gel palm support KMSLCG30 - for offices 418
5-3	Task Light, Desk Base Type, TLDBT

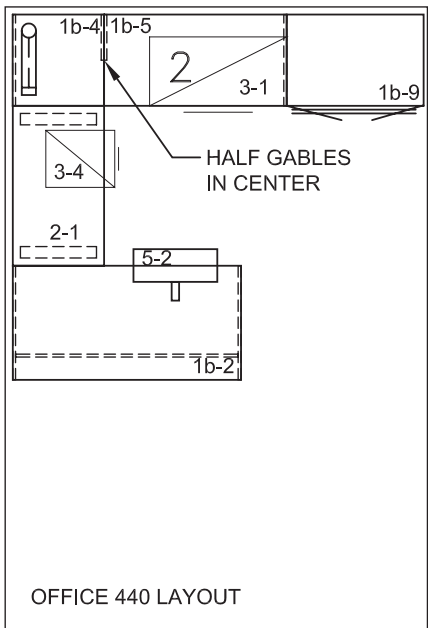
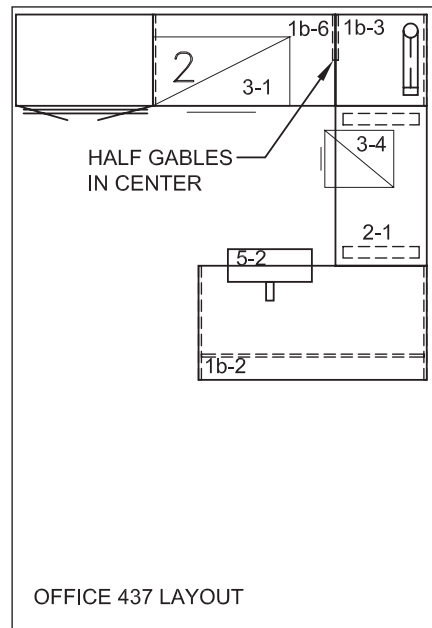
OFFICE TYPE 2B

3D View:



3D FOR REFERENCE ONLY

Office Type 2B Furniture Layout:



FURNITURE NOTES:
1. KEYBOARD TRAY TO BE
INSTALLED ON 1b-2 IN
OFFICES 437 & 440 AS SHOWN

FURNITURE TYPICALS - OFFICE TYPICAL 2B
QTY: 2 - 437, 440

MCROBIE
ARCHITECTS + INTERIOR DESIGNERS

56 SPARKS - 4TH FLOOR
SENATE OFFICE FIT-UP

scale	N/A
date	2017-04-17
drawn	TB
proj.	16-250

dwg no:	OFF2B
rev.	Page 39

OFF2B Consists of

Code No.	Description
Category 1B	
1b-2	Work Surface 2 Full gables (w/modesty) High Pressure Laminate Rectangular 1524mm (60") x 762mm (30"), WSxxGGLHRxxxxxxx6030
1b-3	Work Surface 1 Half, 1 Full Gable (w/modesty) - <i>installed RH</i> High Pressure Laminate Rectangular 610mm (24") x 610mm (24"), WSxxHGLHRxxxxxxx2424 for Offices: 437
1b-4	Work Surface 1 Half, 1 Full Gable (w/modesty) - <i>installed LH</i> High Pressure Laminate Rectangular 610mm (24") x 610mm (24"), WSxxHGLHRxxxxxxx2424 for Offices: 440
1b-5	Work Surface 1 Half, 1 Full Gable (w/modesty) - <i>installed RH</i> High Pressure Laminate Rectangular 1220mm (48") x 610mm (24"), WSxxHGLHRxxxxxxx4824 for Offices: 440
1b-6	Work Surface 1 Half, 1 Full Gable (w/modesty) - <i>installed LH</i> High Pressure Laminate Rectangular 1220mm (48") x 610mm (24"), WSxxHGLHRxxxxxxx4824 for Offices: 437
1b-9	Storage Products Wardrobe Freestanding Laminate Two Hinged Doors Closed Cupboard 914mm (36") x 610mm (24") x 1829mm (72"), SPWAFSLxxDDxxCx723624
Category 2	
2-2	Sit/Stand Range Height Adjustable Work Surface Electrically Assisted 1219mm (48") x 610mm (24"), FSCEA4824
Category 3	
3-1	Locking Lateral Filing Cabinets Two (2) fixed front drawers 914mm (36") x 457mm (18"), LLFC2DFDxxx1836xxx
3-4	Pedestals Mobile with Locking casters, depth 559mm (22") Box, File PEDSMCL22xxBFxxxxxx

OFF2B Consists of

Code No.	Description
Category 5	
5-1	Keyboard Tray for 24"D surface Lever control Gel palm support KMSLCG24 - for offices 427, 428, 430, 444, 429, 442
5-3	Task Light, Desk Base Type, TLDBT

Tous les autres termes et conditions demeurent inchangés.