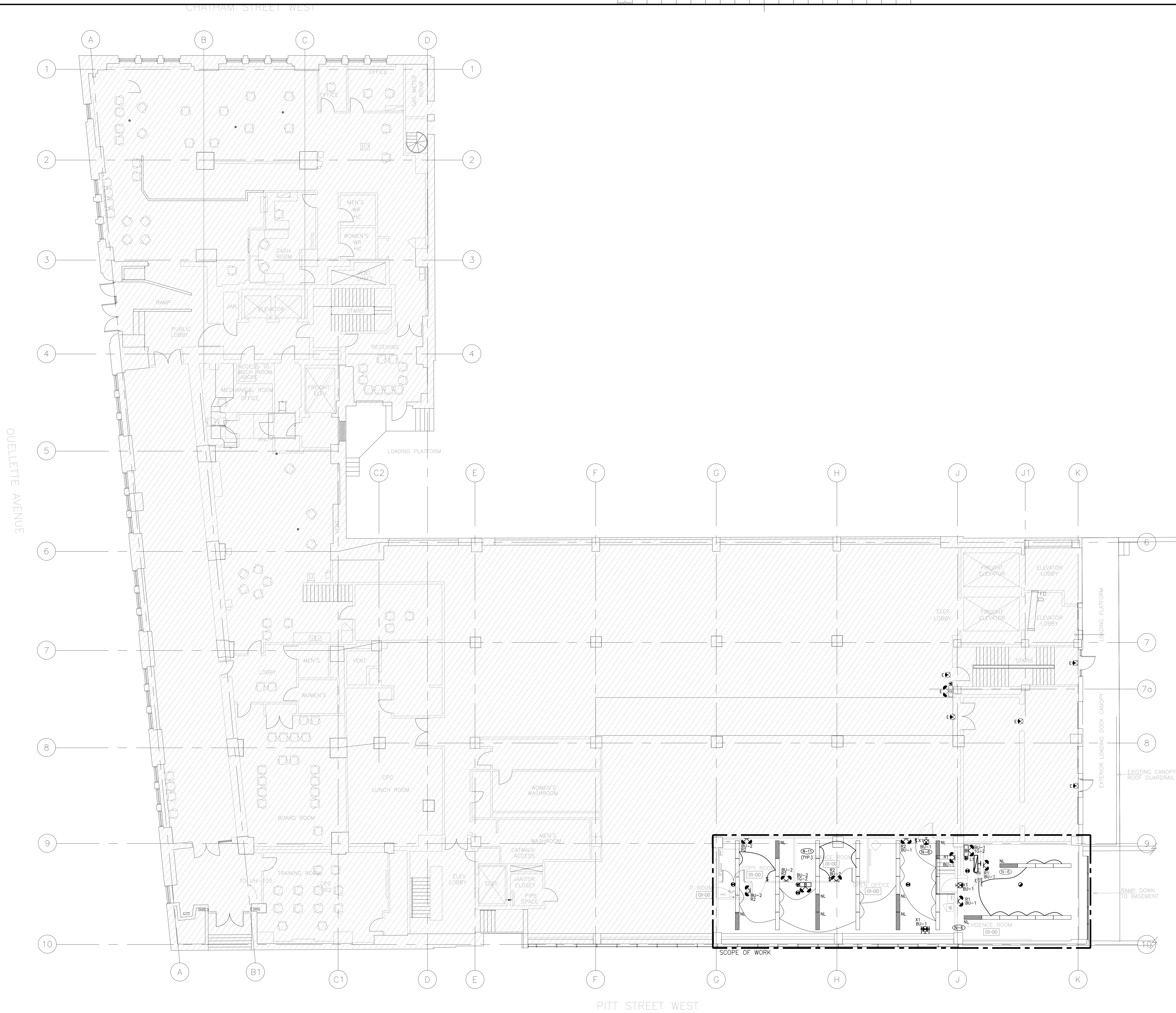


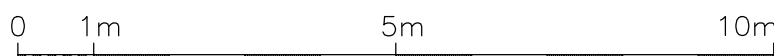
POWER AND SYSTEMS LEGEND	
	WALL MOUNTED DUPLEX RECEPTACLE 120 VOLT, 15 AMP, CSA 5-15R OR AS NOTED
	WALL MOUNTED DUPLEX RECEPTACLE 120 VOLT, 20 AMP, CSA 5-20R
	WALL MOUNTED DUPLEX RECEPTACLE 120 VOLT, 15 AMP, CSA 5-15R, REDUCED CIRCUIT
	CEILING MOUNTED DUPLEX RECEPTACLE 120 VOLT, 15 AMP, CSA 5-15R
	CEILING MOUNTED QUAD RECEPTACLE 120 VOLT, 15 AMP, CSA 5-15R
	WALL MOUNTED SPECIALTY RECEPTACLE, TYPE AS INDICATED ON PLAN
	WALL MOUNTED RECEPTACLES 2 DUPLEX CSA 5-15R
	ONE BACKBOX C/W ONE MINIMUM 1-1/4" CONDUIT OR AS SPECIFIED ON DETAILS, STUBBED INTO CEILING SPACE C/W TWO CONNECTORS WITH NULOV BUSHINGS AND PUSH STRINGS FOR USE BY COMMUNICATIONS CONTRACTOR, ONE CONDUIT PER BOX.
	ONE BACKBOX C/W MINIMUM 1-1/4" CONDUIT OR AS SPECIFIED ON DETAILS, STUBBED INTO CEILING SPACE OR TO AUDIO VISUAL DEVICE C/W TWO CONNECTORS WITH NULOV BUSHINGS AND PUSH STRINGS FOR USE BY AUDIO VISUAL CONTRACTOR, ONE CONDUIT PER BOX.
	CABLE TV OUTLET WALL MOUNTED ROUGH-IN
	CONNECTION TO ELECTRIFIED FURNITURE, LETTER DENOTES FEED LOCATION: W = WALL, F = FLOOR, RW = RECESSED, P = POLE
	FLOOR BOX COMPLETE WITH DUPLEX CSA 5-15R
	FLOOR MOUNTED OUTLET 2 DUPLEX CSA 5-15R
	FLOOR BOX C/W CSA 5-15R AND OPENING FOR USE BY COMMUNICATION CONTRACTOR AS SPECIFIED
	FLUSH POKE-THROUGH FLOOR BOX AS SPECIFIED
	WALL/FLOOR MOUNTED WIREMOLD RACEWAY, TYPE AS SPECIFIED C/W TYPE AND QUANTITY OF DEVICES INDICATED
	SERVICE POLE, TYPE AS SPECIFIED C/W TYPE AND QUANTITY OF DEVICES INDICATED
	PANEL-SURFACE MOUNT
	PANEL-FLUSH MOUNT
	DIRECT CONNECTION TO EQUIPMENT AS NOTED
	COMMUNICATION DISCONNECT/STARTER
	DISCONNECT SWITCH
	TRANSFORMER
	CONNECTION TO MOTOR
	MANUAL STARTER
	CONTACTOR
	BUZZER
	GROUNDING BUS BAR
	CABLE TRAY REFER TO SPECIFICATION LETTER DENOTES FOR TYPE
	SIGNAL BELL
	PAGING SPEAKER
	AUDIO VISUAL SPEAKER
SECURITY LEGEND	
	SECURITY CARD READER ROUGH-IN
	SECURITY ELECTRIC STRIKE ROUGH-IN
	SECURITY MAGNETIC LOCK ROUGH-IN C/W FIRE ALARM TIE-IN
	DOOR CONTACT ROUGH-IN
	SECURITY DOOR ALARM ROUGH-IN
	BREAK GLASS SENSOR ROUGH-IN
	AUTOMATIC DOOR OPERATOR ROUGH-IN
	WALL MOUNTED SECURITY REQUEST TO EXIT MOTION SENSOR ROUGH-IN
	WALL MOUNTED INTERCOM ROUGH-IN
	SECURITY KEY PAD ROUGH-IN
	PUSH BUTTON ROUGH-IN
	SECURITY CAMERA ROUGH-IN
	DOOR BELL/CHIME
NOTE: NOT ALL SYMBOLS APPLY. CONTRACTOR TO REFER TO FLOOR PLANS.	

[illegible][illegible]



- NOTES
- 1. THESE DRAWINGS SHALL BE READ IN CONJUNCTION WITH THE ARCHITECT'S DRAWINGS FOR DIMENSIONS, MOUNTING HEIGHTS, CONSTRUCTION DETAILING, FINISHES AND COLOURS.
 - 2. THE CIRCUITING IN PART IS DIAGNOSTIC INTENDED TO SHOW GENERAL CIRCUIT ARRANGEMENT AND PANEL DESIGNATION.
 - 3. THE LIGHTING LAYOUT SHOWN ON THE FLOOR PLAN INDICATE FINAL LOCATION ONLY. THE ELECTRICAL CONTRACTOR SHALL VISIT THE SITE AND COORDINATE THE EXACT QUANTITY OF LIGHTING LUMINAIRES TO BE NEW, RELOCATED AND/OR RETAINED IN EXISTING LOCATION.
 - 4. THE ELECTRICAL CONTRACTOR SHALL RELAMP THE EXISTING AND RELOCATED LUMINAIRES DUE TO BURNOUT CONDITIONS AND REPLACE FAULTY BALLASTS AS REQUIRED. THIS IS TO BE INCLUDED IN THE BASE PRICE.
 - 5. THE ELECTRICAL CONTRACTOR IS TO REWORK EXISTING NIGHT LIGHTS TO ACHIEVE THE NEW NIGHT LIGHT LAYOUT AS SHOWN. CONNECT THE NEW AND/OR RELOCATED LUMINAIRES TO NEAREST NIGHT LIGHT CIRCUITS ON THIS FLOOR.
 - 6. THE ELECTRICAL CONTRACTOR IS TO MEASURE THE ILLUMINATION OF THE FLOOR AT NIGHT WITH EMERGENCY LIGHTING ON ONLY, AND SEND A DRAWING SHOWING THE MAXIMUM AND MINIMUM LEVEL OF ILLUMINATION TO THE CONSULTING ENGINEER FOR REVIEW. PROVIDE WRITTEN CONFIRMATION THAT EMERGENCY LIGHTING HAS BEEN INSTALLED IN ACCORDANCE WITH CONTRACT DOCUMENTS AND LATEST EDITION OF THE ONTARIO BUILDING CODE SECTIONS 3.2.7.3 AND 3.2.7.4. LETTER TO BE INCLUDED AS PART OF CLOSE-OUT DOCUMENT SUBMITTAL PACKAGE.
 - 7. NEW EXIT SIGNS SHALL BE PICTOGRAM (RUNNING MAN) TYPE, MANUFACTURER TO MATCH EXISTING BASE BUILDING STANDARD UNLESS OTHERWISE NOTED. CONNECT NEW EXIT SIGNS TO THE NEAREST AVAILABLE SPARE EXIT LIGHTING CIRCUIT. DO NOT OVERLOAD THE CIRCUIT. ALLOW FOR TWO (2) ADDITIONAL EXIT SIGNS (COMPLETE WITH MATERIAL AND LABOUR) TO BE INSTALLED AS PER BUILDING INSPECTORS REQUIREMENTS UPON FINAL INSPECTION.
 - 8. THE ELECTRICAL CONTRACTOR IS TO ENSURE THAT ALL LIGHTING FIXTURES ARE CLEAN AND ILLUMINATED BY END OF PROJECT.
 - 9. THE ELECTRICAL CONTRACTOR IS TO REWORK EXISTING SWITCHING TO ACCOMMODATE THE NEW LIGHTING LAYOUT WITHIN THE TENANT SPACE.
 - 10. ELECTRICAL CONTRACTOR TO REUSE EXISTING CIRCUIT FOUND IN CEILING SPACE FOR ALL NEW LIGHTING FIXTURES UNLESS OTHERWISE NOTED. CONTRACTOR TO PROVIDE ADDITIONAL CIRCUITS WHERE REQUIRED.
 - 11. ELECTRICAL CONTRACTOR TO REWORK EXISTING LIGHT FIXTURES WIRING TO ARCHIVE NEW LAYOUT AS SHOWN. ELECTRICAL CONTRACTOR TO VISIT THE SITE TO ENSURE EXISTING LUMINAIRES CAN BE REMOVED AND REWORKED AS SHOWN.
 - 12. ALL WIRING AND CONDUITS SHALL BE SURFACE MOUNTED TO EXISTING CEILING AND WALL SPACES (CEILING SPACE CONTAINS ASBESTOS). ALLOW FOR ASSOCIATED MATERIALS FOR AND LABOR WORK WITH AREAS CONTAINING ASBESTOS.
 - 13. ELECTRICAL CONTRACTOR TO ALLOW FOR NEW LIGHTING SWITCHES AS SHOWN. RE-WIRE LIGHT FIXTURES TO ACHIEVE NEW LAYOUT AS SHOWN. ALL NEW WIRING IN CONDUITS SHALL BE SURFACE MOUNTED AS NOTED IN N-12.
 - 14. ALL NEW/RELOCATED LUMINAIRES AND NEW RECESSED DOWN LIGHTS SHALL BE CHAIN HUNG AND SUPPORTED FROM THE SLAB ABOVE. LETTER SHALL BE INCLUDED AS PART OF CLOSE-OUT DOCUMENT SUBMITTAL PACKAGE.

SCALE: 1:100



Public Works and Government Services Canada
Travaux publics et Services gouvernementaux Canada

Smith + Andersen
431 Yonge Street Suite 900 Toronto Ontario M5T 2M8
416 467 9151 / 416 467 9106 smithandanderson.com

PROJECT CONTACT

NAME: Mohammad Al-Anee

TEL: 647 943 0267

EMAIL: Mohammad.Al-Anee@smithandanderson.com

revision	date
04	
03	
02	ISSUED FOR TENDER 2017.03.10
01	ISSUED FOR PERMIT 2017.03.01

Do not scale drawings.
Verify all dimensions and conditions on site and immediately notify the Departmental Representative of all discrepancies.

A Detail No.
B No. du détail
C drawing no. - où détail requis
drawing no. - où détail requis
drawing no. - où détail requis

project title
titre du projet
WINDSOR Ontario
PAUL MARTIN BUILDING
185 OUELLETTE AVENUE

drawing title
titre du dessin
1ST FLOOR
LIGHTING AND FIRE ALARM
LAYOUT

drawn by
dessiné par
AA

designed by
conçu par
MA

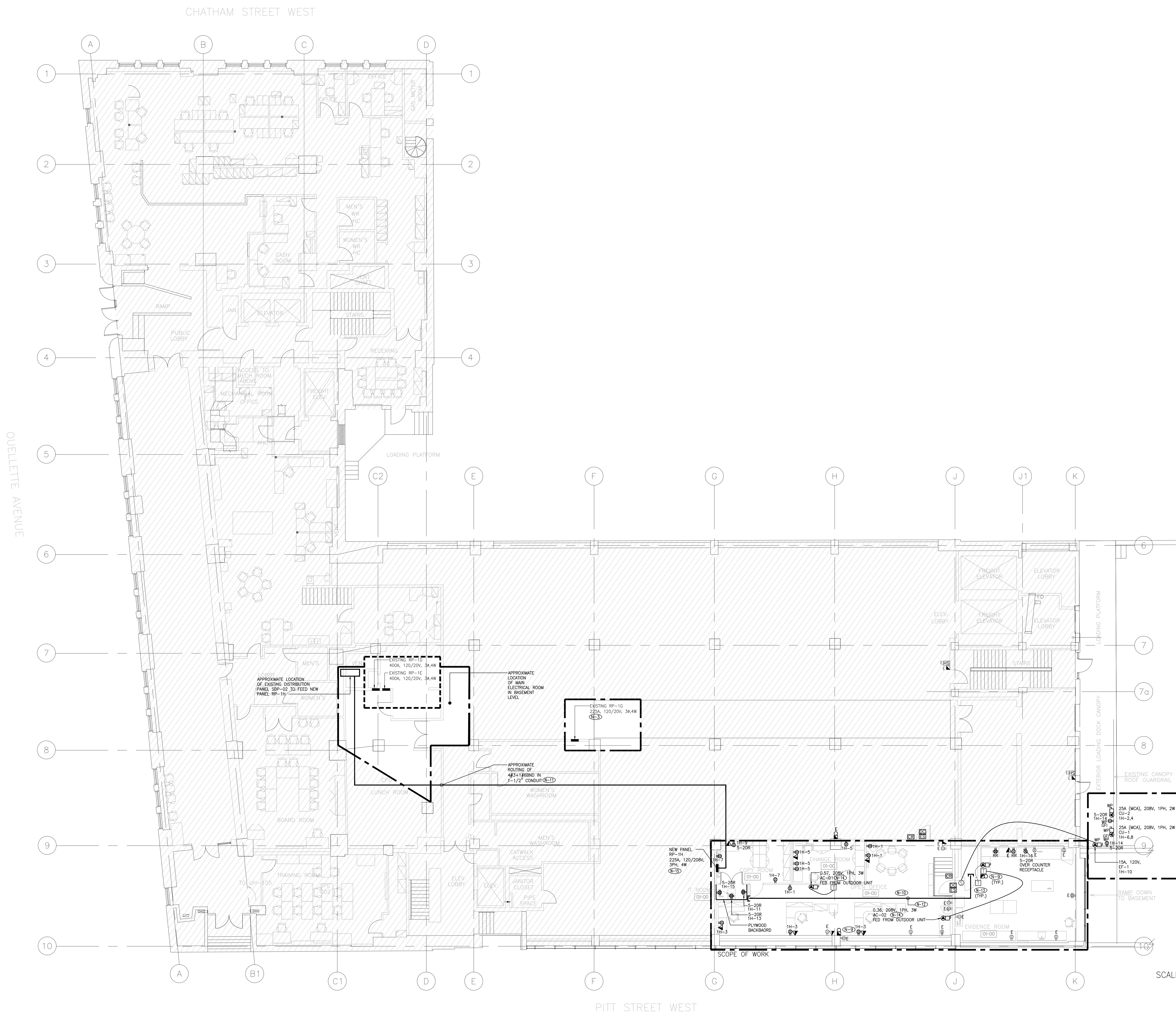
approved by
approuvé par
JC

by
offre
project manager
administrateur de projet

project date
date du projet
2017-02-06

project no.
no. du projet
R.080044.041

drawing no.
dessiné no.
TE-1.1



NOTES

1. THESE DRAWINGS SHALL BE READ IN CONJUNCTION WITH THE ARCHITECT'S DRAWINGS FOR DIMENSIONS, HEIGHTS, CONSTRUCTION DETAILING, FINISHES AND COLOURS.
2. THE CIRCUITING IN PART IS DIAGRAMMATIC INTENDED TO SHOW GENERAL CIRCUIT ARRANGEMENT AND PANEL DESIGNATION.
3. THE ELECTRICAL CONTRACTOR IS TO REUSE CIRCUITS OBTAINED THROUGH DEMOLITION ELECTRICAL CONTRACTOR TO DETERMINE ON SITE IF THE EXISTING PANEL RP-10 HAS ENOUGH CIRCUITS AND ENOUGH CAPACITY AFTER DISCONNECTING ALL NON-USED LOADS TO FEED ALL NEW LOADS. ELECTRICAL CONTRACTOR TO REPORT TO ELECTRICAL CONSULTANT ALL THE FINDINGS FOR CONSULTANT APPROVAL. ALLOW FOR ALL ASSOCIATED COST IN THE TENDER BID.
4. VERIFY THE EXACT POWER REQUIREMENTS AND RECEPTACLE TYPES FOR SPECIAL EQUIPMENT WITH MANUFACTURERS PRIOR TO INSTALLATION. PROVIDE THE HARDWARE CONNECTIONS FOR DISHWASHERS AND COPIERS ETC. IN LIEU OF RECEPTACLES OR VICE VERSA, AS REQUIRED.
5. REFER TO THE ARCHITECT'S DRAWINGS FOR THE COLOUR OF COVERPLATES AND MOUNTING HEIGHTS.
6. THE ELECTRICAL CONTRACTOR IS TO MARK UP OUTLET AND DEVICE LOCATIONS AND OBTAIN APPROVAL BY THE DESIGN CONSULTANT, PRIOR TO INSTALLATION.
7. THE ELECTRICAL CONTRACTOR SHALL SUPPLY AND INSTALL SUITABLE LABELS ON ALL RECEPTACLES AND SYSTEM FURNITURE FEEDS. LABELS TO INCLUDE BOTH PANEL AND CIRCUIT DESIGNATION, ROOM LABEL, SIZE AND TYPE WITH CONSULTANT PRIOR TO INSTALLATION.
8. THE ELECTRICAL CONTRACTOR SHALL TRACE ALL EXISTING OUTLETS, NOTED AS EXISTING AND IDENTIFY ON AS BUILT DRAWING AND AS PER ISSUED SPECIFICATION.
9. ALL MODIFICATIONS TO FIRE ALARM SYSTEM AND DEVICES TO BE COMPLETED BY THE BASE BUILDING FIRE ALARM CONTRACTOR AND VENDOR/MANUFACTURER. THE BASE BUILDING FIRE ALARM CONTRACTOR/VENDOR/MANUFACTURER IS RESPONSIBLE TO ENSURE THAT ALL ADDITIONAL COMPONENTS (MATERIAL, SOFTWARE, INCLUDING ANY LABOUR TO INSTALL OR MODIFY THE FIRE ALARM DEVICES) ARE INCLUDED FOR BASED ON THE ISSUED DRAWINGS. ELECTRICAL CONTRACTOR TO ALLOW FOR ALL ASSOCIATED COSTS. NEW FIRE ALARM BELLS ARE TO MATCH EXISTING AND BE CONNECTED TO THE NEAREST AVAILABLE SPARE EMERGENCY ZONE CIRCUITS. THE CONTRACTOR SHALL CONNECT NEW BELLS TO EXISTING CIRCUITS, WHERE THERE IS SPARE CAPACITY ON THE RESPECTIVE CIRCUITS. IF THERE IS NO CAPACITY ON THE EXISTING CIRCUITS, THE CONTRACTOR SHALL PROVIDE NEW FIRE ALARM CIRCUITS. ALLOW FOR ALL ASSOCIATED COSTS INCLUDING BUT NOT LIMITED TO ASSOCIATED EQUIPMENT, DEVICES, PROGRAMMING, TESTING AND VERIFICATION TO MAKE THE SYSTEM OPERATIONAL AND CODE COMPLIANT. ALL FIRE ALARM VERIFICATION SHALL CONFORM TO CAN/ULC-553 LATEST EDITION. THE FIRE ALARM SYSTEM SHALL BE INSTALLED IN CONFORMANCE WITH CAN/ULC-5524 LATEST EDITION.
10. ALL WIRING AND CONDUITS SHALL BE SURFACE MOUNTED TO EXISTING CEILING AND WALL SPACES (CEILING SPACE CONTAINS ASBESTOS). PROVIDE FOR ASSOCIATED MATERIALS AND LABOUR FOR ANY ELECTRICAL ROOM WITHIN AREA CONTAINING ASBESTOS. CONTRACTOR TO COORDINATE WITH THE LANDLORD PRIOR TO COMMENCEMENT OF WORK. ALLOW FOR ALL ASSOCIATED COST IN THE TENDER BID.
11. APPROXIMATE ROUTING SHOWN ONLY. ELECTRICAL CONTRACTOR TO CONFIRM EXACT ROUTING OF POWER WIRING IN CONDUIT ON SITE AND ALLOW FOR ALL ASSOCIATED COST AS A SEPARATE PRICE. ALLOW FOR ALL ASSOCIATED ACCESSORIES, JUNCTION BOXES, SUPPORTS, ETC.
12. ELECTRICAL CONTRACTOR TO PROVIDE SLEEVES AS WELL AS CONDUITS FOR COMMUNICATION CONTRACTOR. COORDINATE EXACT ROUTING WITH COMMUNICATION CONTRACTOR AND ON SITE PRIOR TO ROUGH-INS. ELECTRICAL CONTRACTOR TO ALLOW FOR 2X3" CONDUIT IN THE TENDER BID.
13. THERMOSTATS/SPEED CONTROLLERS SHALL BE SUPPLIED BY MECHANICAL CONTRACTOR AND INSTALLED BY ELECTRICAL CONTRACTOR. COORDINATE EXACT LOCATION WITH MECHANICAL CONTRACTOR. ELECTRICAL CONTRACTOR SHALL PROVIDE ALL REQUIRED WIRING IN CONDUITS FROM ALL THERMOSTATS/SPEED CONTROLLERS TO THE FANS/DOOR COOLING UNITS, ETC.
14. ELECTRICAL CONTRACTOR TO PROVIDE ALL REQUIRED POWER WIRING IN CONDUIT BETWEEN THE OUTDOOR AND THE INDOOR UNITS (CU-1 AND CU-2, AC-1 AND AC-2). ELECTRICAL CONTRACTOR TO PROVIDE 3/4" x 1/4" IN 3/4" CONDUIT.
15. ELECTRICAL CONTRACTOR TO VISIT THE SITE AND ALLOW FOR ALL REQUIRED X-RAY/SCANNING PRIOR TO CORE THE 1-1/2" CONDUIT. ALLOW FOR ALL ASSOCIATED COST FOR POWER DISTRIBUTION SLEEVES INCLUDING BUT NOT LIMITED TO PROVIDING BREAKER, PANEL, CABLE, CONDUIT, ETC. AS A SEPARATE PRICE.

SCALE: 1:100

0 1m 5m 10m



Smith + Andersen

4311 Yonge Street Suite 900 Toronto Ontario M2P 2M9
416 467 9151 F 416 467 9104 smithandanderson.com

PROJECT CONTACT

NAME: Mohammad Al-Anee

TEL: 647 943 0267

EMAIL: Mohammad.Al-Anee@smithandanderson.com

04		
03		
02	ISSUED FOR TENDER	2017.03.10
01	ISSUED FOR PERMIT	2017.03.01
revision		date

Do not scale drawings.
Verify all dimensions and conditions on site and immediately
notify the Departmental Representative of all discrepancies.

A	Detail No.
B	No. du détail
C	drawing no. - where detail required
	dessin no. - où détail requis
	drawing no. - where detailed
	dessin no. - où détaillé

project title
titre du projet
WINDSOR Ontario
PAUL MARTIN BUILDING
185 OUELLETTE AVENUEdrawing title
titre du dessin
1ST FLOOR
POWER AND SYSTEMS
LAYOUTdrawn by
dessiné par AAdesigned by
conç par MAapproved by
approuvé par JCbldg office project manager
administrateur de projetsproject date
date du projet 2017-02-06project no.
no. du projet R.080044.041drawing no.
dessiné no. TE-1.2



NOTES

- (N-D) THE COMPLETE EXTENT OF DEMOLITION IS NOT SHOWN. REFER TO THE ARCHITECT'S DRAWINGS TO DETERMINE THE COMPLETE EXTENT OF DEMOLITION. ALLOW FOR ALL COSTS.
- (N-D) AS PART OF THE DEMOLITION CONTRACT, THE ELECTRICAL CONTRACTOR SHALL REMOVE ALL FLOOR, COLUMN, CEILING, AND WALL MOUNTED POWER, TELEPHONE/DATA OUTLETS, CABLING AND CONDUIT NOT REQUIRED, TO SUIT THE NEW LAYOUT AND MAKE SAFE. VISIT SITE TO DETERMINE THE EXACT REQUIREMENTS AND REFER TO DEMOLITION DRAWINGS.
- (N-D) THE ELECTRICAL CONTRACTOR IS TO MAKE GOOD ALL CORE HOLES FROM ELECTRICAL EQUIPMENT AND DEVICES DISCONNECTED, RELOCATED AND OR REMOVED IN THIS PROJECT.
- (N-D) ALL EXISTING ELECTRICAL DEVICES, EQUIPMENT AND LIGHTING WITHIN BASE BUILDING ROOMS, STAIRWELLS AND AREAS DEEMED NOT IN SCOPE SHALL REMAIN LIVE AND OPERATIONAL. ELECTRICAL CONTRACTOR TO ENSURE SERVICES TO THESE AREAS ARE ISOLATED AND PROTECTED DURING THE COURSE OF DEMOLITION AND CONSTRUCTION.
- (N-D) ALL REMOVED BASE BUILDING LIGHTING FIXTURES SHALL BE TURNED OVER TO THE LANDLORD FOR SELECTION AT A PLACE DESIGNATED BY THE LANDLORD. ALL LUMINAIRES THAT ARE REJECTED BY THE LANDLORD SHALL BE REMOVED FROM THE SITE.
- (N-D) ELECTRICAL CONTRACTOR TO VISIT THE SITE AND CONFIRM IF THE EXISTING 4FT LINEAR FIXTURES CAN BE REMOVED AS SHOWN (PART OF LONG LINEAR RUN OF THE LIGHTING FIXTURES). ALLOW FOR ALL ASSOCIATED COST IN THE TENDER BIT.



Smith + Andersen

4211 Yonge Street Suite 200 Toronto Ontario M2P 2A9
416 467 9131 F 416 467 9104 smithandanderson.com

PROJECT CONTACT

NAME: Mohammad Al-Ane

TEL: 647 943 0267

EMAIL: Mohammad.Al-Anee@smithandanderson.com

04		
03		
02	ISSUED FOR TENDER	2017.03.10
01	ISSUED FOR PERMIT	2017.03.01
revision		date

Do not scale drawings.
Verify all dimensions and conditions on site and immediately
notify the Departmental Representative of all discrepancies.

A	Detail No.
B	No. du détail
C	drawing no. - where detail required dessin no. - où détail requis
C	drawing no. - where detailed dessin no. - où détaillé

project title
titre du projet
WINDSOR Ontario
PAUL MARTIN BUILDING
185 OUELLETTE AVENUE

drawing title
titre du dessin
1ST FLOOR
ELECTRICAL DEMOLITION
LAYOUT

drawn by
dessiné par
AA

designed by
conçue par
MA

approved by
approuvé par
JC

bid
offre
project manager
administrateur de projets

project date
date du projet
2017-02-06

project no.
no. du projet
R.080044.041

drawing no.
dessiné no.
TE-1.3

SCALE: 1:100 0 1m 5m 10m