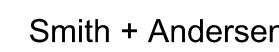
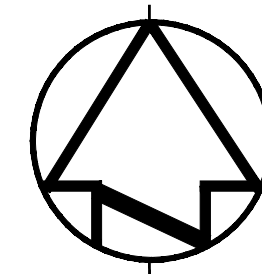


NOTE: NOT ALL SYMBOLS APPLY, REFER TO FLOOR PLANS AND DRAWINGS

	BACK FLOW PREVENTOR	NOTE: NOT ALL SYMBOLS APPLY, REFER TO FLOOR PLANS AND DRAWINGS
---	---------------------	--

NOTE: EXISTING EQUIPMENT, PIPING, VALVES, DUCTWORK SHOWN LIGHT TO REMAIN

NOTE: NOT ALL SYMBOLS APPLY, REFER TO FLOOR PLANS AND DRAWINGS



4211 Yonge Street Suite 500 Toronto Ontario M2P 2A9
416 487 8151 f 416 487 9104 smith@ndjandersen.com

PROJECT CONTACT

NAME: KATY BOYERAHMAD

TEL: 647-943-026.

EMAIL: kathyboyerchmof@smithandandersen.com

THIS DRAWING
WITH MECHANICAL
THIS PROJECT

04		
03	ISSUED FOR TENDER	2017-03-10
02	ISSUED FOR PERMIT	2017-03-01
01	ISSUED FOR 33%	2017-02-21
revision		date

Do not scale drawings.
Verify all dimensions and conditions on site and immediately
notify the Departmental Representative of all discrepancies.

A Detail No.
No. du détail

B drawing no. — where detail required
dessin no. — où détail exigé

C drawing no. — where detailed
dessin no. — où détaillé

project title titre du projet WINDSOR	Ontario
PAUL MARTIN BUILDING 185 OUELLETTE AVENUE	

drawing title titre du dessin
DRAWING LIST, LEGEND AND DETAILS
FIRST FLOOR

drawn by
dessine par

designed by	
conc par	KB

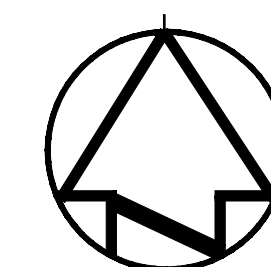
approved by	approuvé par	RC
-------------	--------------	----

bid	project manager
offre	administrateur de projets

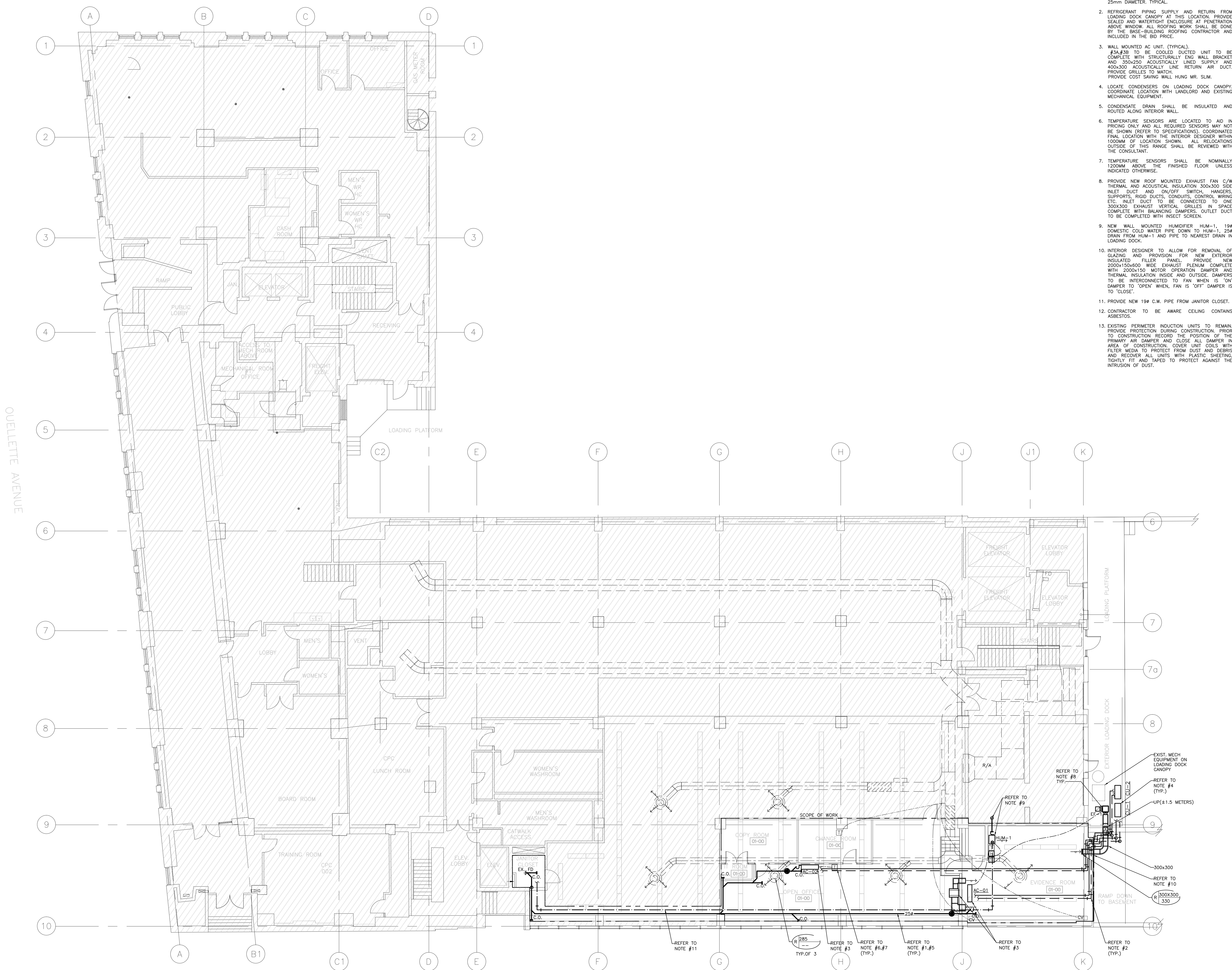
projet 2017
date du projet 2017-02-06

project no.
no. du projet

drawing no.
dessine no. TM 01



CHATHAM STREET WEST



PITT STREET WEST

GENERAL NOTES:

- DO NOT SCALE DRAWINGS. THE LOCATIONS OF ALL ITEMS SHOWN ON THE DRAWINGS OR SPECIFIED THAT ARE NOT DEFINITELY FIXED BY DIMENSIONS ARE APPROXIMATE ONLY. THE EXACT LOCATIONS NECESSARY TO SECURE THE BEST CONDITIONS AND RESULTS MUST BE DETERMINED BY THE SITE CONDITIONS. REVIEW ALL REVISIONS WITH THE CONSULTANT.

DRAWING NOTES:

1. MINIMUM CONDENSATE DRAINAGE SIZE SHALL BE 25mm DIAMETER, TYPICAL.
2. REFRIGERANT PIPING SUPPLY AND RETURN FROM LOADING DOCK CANOPY AT THIS LOCATION. PROVIDE SEALED AND WATERTIGHT ENCLOSURE AT PENETRATION ABOVE WINDOW. ALL ROOFING WORK SHALL BE DONE BY THE BASE-BUILDING ROOFING CONTRACTOR AND INCLUDED IN THE BID PRICE.
3. WALL MOUNTED AC UNIT (TYPICAL). #3A, #5B TO BE COOLED DUCTED UNIT TO BE COMPLETE WITH STRUCTURALLY ENG. WALL BRACKET AND 350x250 ACOUSTICALLY LINED SUPPLY AND 400x300 ACOUSTICALLY LINED RETURN AIR DUCT. PROVIDE GRILLES TO MATCH. PROVIDE COST SAVING WALL HUNG MR. SLIM.
4. LOCATE CONDENSERS ON LOADING DOCK CANOPY. COORDINATE LOCATION WITH LANDLORD AND EXISTING MECHANICAL EQUIPMENT.
5. CONDENSATE DRAIN SHALL BE INSULATED AND ROUTED ALONG INTERIOR WALL.
6. TEMPERATURE SENSORS ARE LOCATED TO AID IN PRICING ONLY AND ALL REQUIRED SENSORS MAY NOT BE SHOWN (REFER TO SPECIFICATIONS). COORDINATED FINAL LOCATION WITH THE INTERIOR DESIGNER WITHIN 1000MM OF LOCATION SHOWN. ALL RELOCATIONS OUTSIDE OF THIS RANGE SHALL BE REVIEWED WITH THE CONSULTANT.
7. TEMPERATURE SENSORS SHALL BE NOMINALLY 1200MM ABOVE THE FINISHED FLOOR UNLESS INDICATED OTHERWISE.
8. PROVIDE NEW ROOF MOUNTED EXHAUST FAN C/W THERMAL AND ACOUSTICAL INSULATION 300x300 SIZE INLET DUCT AND ON/OFF SWITCH, HANGERS, SUPPORTS, RIGID DUCTS, CONDENSATE CONTROL WIRING ETC. INLET DUCT TO BE CONNECTED TO ONE 300x300 EXHAUST VERTICAL GRILLES IN SPACE COMPLETE WITH BALANCING DAMPERS. OUTLET DUCT TO BE COMPLETED WITH INSECT SCREEN.
9. NEW WALL MOUNTED HUMIDIFIER HUM-1, 19# DOMESTIC COLD WATER PIPE DOWN TO HUM-1, 25# DRAIN FROM HUM-1 AND PIPE TO NEAREST DRAIN IN LOADING DOCK.
10. INTERIOR DESIGNER TO ALLOW FOR REMOVAL OF GLAZING AND PROVISION FOR NEW EXTERIOR INSULATED FILLER PANEL. PROVIDE NEW 2000x150x600 WIDE EXHAUST PLENUM COMPLETE WITH 2000x150 MOTOR OPERATION DAMPER AND THERMAL INSULATION INSIDE AND OUTSIDE. DAMPERS TO BE INTERCONNECTED TO FAN WHEN IS 'ON' DAMPER TO 'OPEN' WHEN FAN IS 'OFF' DAMPER IS TO 'CLOSE'.
11. PROVIDE NEW 19# C.W. PIPE FROM JANITOR CLOSET.
12. CONTRACTOR TO BE AWARE CEILING CONTAINS ASBESTOS.
13. EXISTING PERIMETER INDUCTION UNITS TO REMAIN. PROVIDE PROTECTION DURING CONSTRUCTION. PRIOR TO CONSTRUCTION RECORD THE POSITION OF THE PRIMARY AIR DAMPER AND CLOSE ALL DAMPER IN AREA OF CONSTRUCTION. COVER UNIT COILS WITH FILTER MEDIA TO PROTECT FROM DUST AND DEBRIS AND RECOVER ALL UNITS WITH PLASTIC SHEETING TIGHTLY FIT AND TAPED TO PROTECT AGAINST THE INTRUSION OF DUST.
14. CLEAN PERIMETER INDUCTION UNITS AT THE COMPLETION OF CONSTRUCTION. CLEANING SHALL INCLUDE, BUT IS NOT LIMITED TO, THE FOLLOWING:
 1. REMOVE THE COVERS.
 2. VACUUM AND WIPE CLEAN ASSOCIATED COILS AND UNIT SCREENS AS REQUIRED.
 3. CLEAN SUPPLY AIR NOZZLES WITH HIGH PRESSURE AIR AND STEAM.
 4. SET PRIMARY AIR VALVE BACK TO ORIGINAL LOCATION AND VERIFY AIR BALANCE.
 5. WASH INDUCTION UNIT COVERS AND INSTALL IN ORIGINAL LOCATION.
15. INSPECT AND VERIFY THE OPERATION OF CONTROL VALVES AND THERMOSTAT/TEMPERATURE SENSORS FOR PERIMETER INDUCTION UNITS. PROVIDE A WRITTEN REPORT IDENTIFYING ALL INSPECTIONAL OR DAMAGED CONTROL DEVICES AND PROVIDE AN ITEMIZED COST ASSOCIATED WITH REPAIR OR REPLACEMENT AS REQUIRED.



Smith + Andersen

4211 Yonge Street Suite 500 Toronto, Ontario M2P 3A9
416 467 8131 F 416 467 8134 smithanderson.com

PROJECT CONTACT

NAME: KATY BOYERAHMADI
TEL: 647-943-0264
EMAIL: katyboyerahmadi@smithanderson.com

THIS DRAWING SHALL BE READ IN CONJUNCTION
WITH MECHANICAL SPECIFICATION SUBMITTED FOR
THIS PROJECT.

04		
03	ISSUED FOR TENDER	2017-03-10
02	ISSUED FOR PERMIT	2017-03-01
01	ISSUED FOR 33%	2017-02-23
revision		date

Do not scale drawings.
Verify all dimensions and conditions on site and immediately
notify the Departmental Representative of all discrepancies.

A	Detail No.
B	No. du détail
C	drawing no. - where detail required dessin no. - où détail exigé
C	drawing no. - where detailed dessin no. - où détaillé

project title
titre du projet
WINDSOR Ontario
PAUL MARTIN BUILDING
185 QUELLETTE AVENUE

drawing title
titre du dessin
**DRAWING LIST, LEGEND AND DETAILS
FIRST FLOOR**

drawn by
dessiné par KB

designed by
conçu par KB

approved by
approuvé par RC

bid
offre project manager
administrateur de projets

project date
date du projet 2017-02-06

project no.
no. du projet R.080044.041

drawing no.
dessiné no. TM-1.2