

INTEGRATION COORDINATE TABLE

OBSERVED REFERENCE POINTS (ORPs) DERIVED FROM GPS OBSERVATIONS USING THE PRECISE POINT POSITIONING (PPP) SERVICE, UTM ZONE 19, NAD 83 CSRS (1997.0).

| POINT NO. | NORTHING | EASTING |
|-----------|------------|-----------|
| 1 | 7067932.19 | 521928.84 |
| 2 | 7067949.37 | 521772.88 |

FIELD WORK COMPLETED OCTOBER 8TH, 2016.

QUALITY CONTROL REVIEW COMPLETED BY ERIC RODY, CLS ON OCTOBER 20TH, 2016.

COORDINATE NOTE

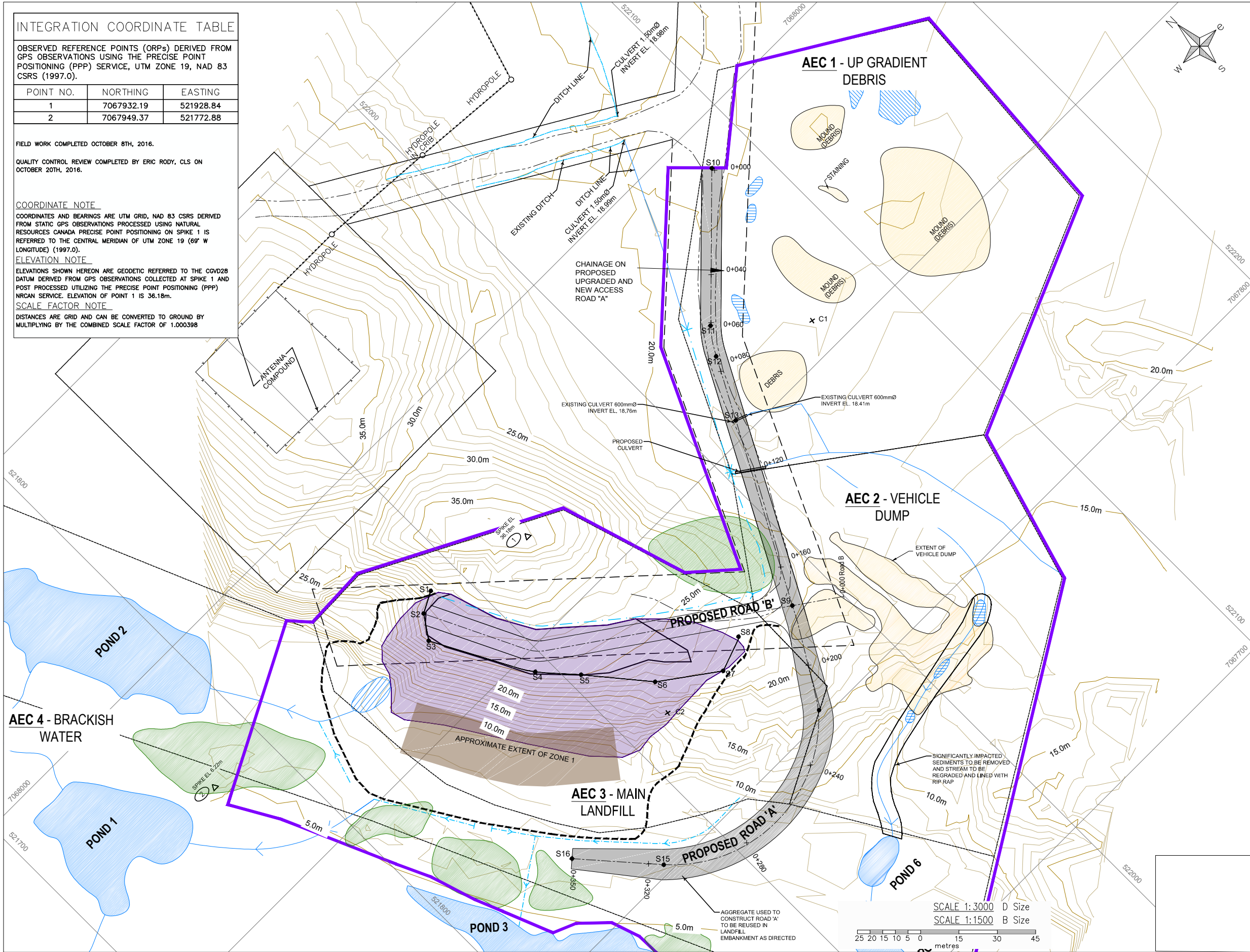
COORDINATES AND BEARINGS ARE UTM GRID, NAD 83 CSRS DERIVED FROM STATIC GPS OBSERVATIONS PROCESSED USING NATURAL RESOURCES CANADA PRECISE POINT POSITIONING ON SPIKE 1 IS REFERRED TO THE CENTRAL MERIDIAN OF UTM ZONE 19 (69° W LONGITUDE) (1997.0).

ELEVATION NOTE

ELEVATIONS SHOWN HEREON ARE GEODETIC REFERRED TO THE CGVD28 DATUM DERIVED FROM GPS OBSERVATIONS COLLECTED AT SPIKE 1 AND POST PROCESSED UTILIZING THE PRECISE POINT POSITIONING (PPP) NRCAN SERVICE. ELEVATION OF POINT 1 IS 36.18m.

SCALE FACTOR NOTE

DISTANCES ARE GRID AND CAN BE CONVERTED TO GROUND BY MULTIPLYING BY THE COMBINED SCALE FACTOR OF 1.000398



Public Works and
Government Services
Canada

Travaux publics et
Services gouvernementaux
Canada

REAL PROPERTY SERVICES
Western Region
SERVICES IMMOBILIERS
Région de l'ouest

PRELIMINARY
NOT FOR CONSTRUCTION

- AREA OF PROPOSED WORK
- FENCE
- EXTENT OF EXPOSED LANDFILL
- EDGE OF EXISTING ROAD
- ROAD ALLOWANCE
- PROPOSED ROAD - EDGE
- PROPOSED ROAD - CENTRELINE
- TOE/EDGE OF PROPOSED LANDFILL EMBANKMENT
- EXISTING GROUND SURFACE CONTOUR
- PROPOSED DITCHES/SWALES
- EXISTING DITCHES
- ROCK OUTCROP
- LIMITS OF EXISTING WASTE
- SURFACE WATER POOL
- AREA OF DEBRIS/STAINING TO BE CLEANED UP AND CAPPED
- SETTING OUT POINT (S1)

| | | |
|----------|-------------------|------------|
| 5 | | |
| 4 | | |
| 3 | | |
| 2 | | |
| 1 | Issued for Tender | May 2017 |
| 0 | Design Completion | April 2017 |
| Revision | Description | Date |

Client
**PWGSC for
Transport Canada**

Project title
**REMEDIATION AT FORMER METAL
DUMP AND COMMUNITY LANDFILL
AT IQALUIT, NUNAVUT**

Drawn by
PAF

Designed by
GFP

Approved by
SL/CG

PWGSC Project Manager
Michael Brownlee

Drawing title
**OVERVIEW OF
PROPOSED WORKS**

| | | |
|--------------------------------|---------------------|----------------------|
| Project no. R.083118 | Sheet C02 | Revision 0 |
|--------------------------------|---------------------|----------------------|