



Invitation to Tender (ITT)

Main Entrance/Colonnade Glazing/Roof Replacement & Sloped Sill Repair

Reference #: NGC110697

Buy and Sell Reference #: PW-17-00774510

May 17, 2017

ADDENDA # 2

This Addendum forms part of the contract documents and is to be read, interpreted, and coordinated with all other parts. The cost of all contained herein is to be included in the contract sum. Acknowledge receipt of this Addendum by inserting its number and date on the Tender Form, specifically article G.2.

Appendix J - Electrical Mechanical (EN) - AE3.1 General Additions/Clarifications

- .1 **Clarification** - The Contractor shall provide temporary exterior lighting in the three (3) additional covered walkways as indicated below, also shown in the Tim Davis Design Drawings Package, sheet No.11. Provide additional circuits from temporary panel c/w all associated photocells, conduit, wiring, breakers, fasteners and fittings required for a complete and operational system. Allow for wall sconce fixtures to be installed in the covered walkways shown in Figure-1: Covered Walkway Exit from Parking garage, Figure-2: Covered Walkway Main Entrance and Figure-3: Covered Walkway emergency exits:

Figure -1: Covered Walkway Exit from Parking garage

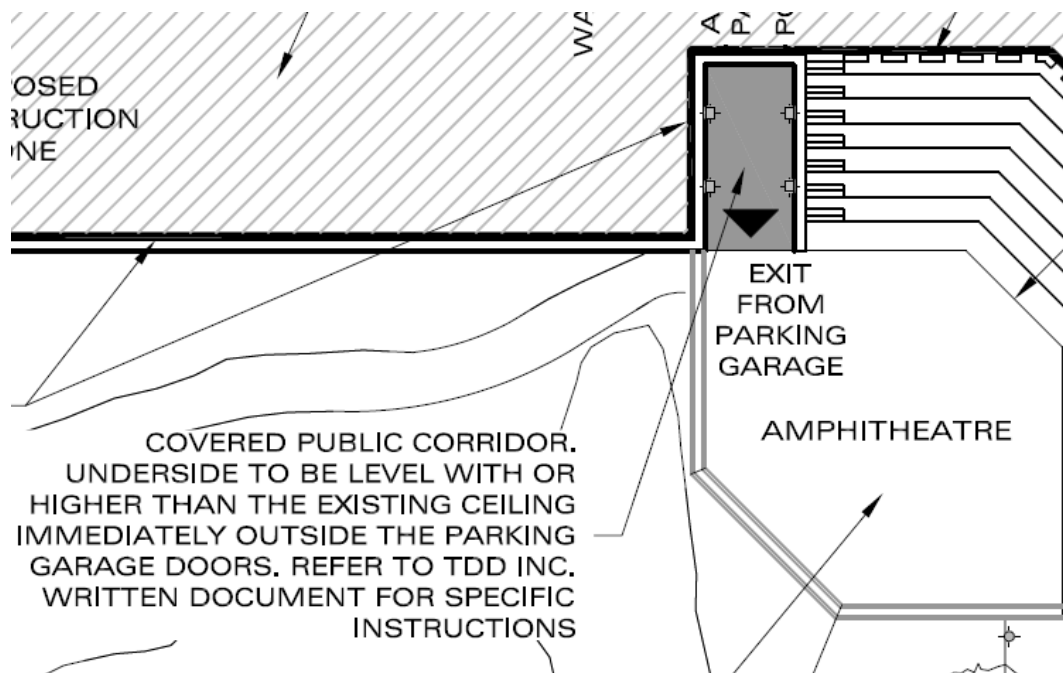




Figure-2: Covered Walkway Main Entrance

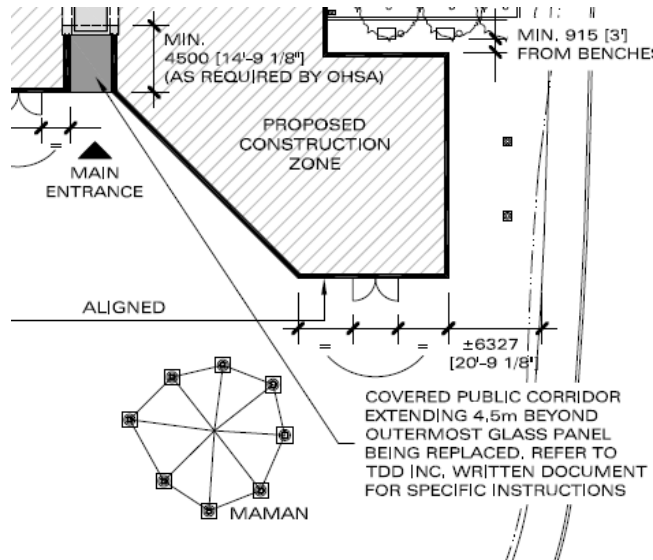
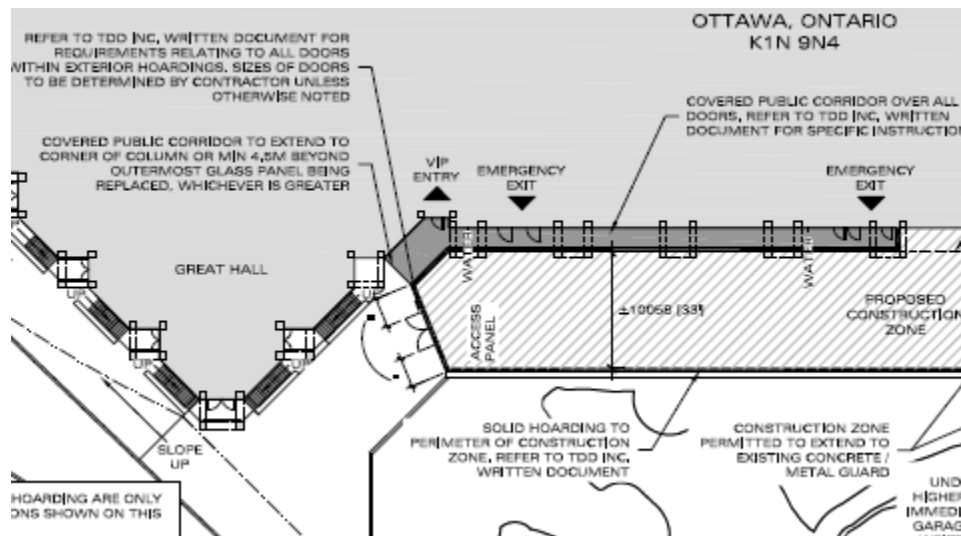


Figure-3: Emergency Exits



- .2 **Clarification** - The Contractor is to provide light fixtures to meet the following requirements: wall-mounted scone We-ef QLS420 LED 3000K, Symmetric, medium beam, grey metallic finish, or direct equivalent to Clients Approval, spaced as needed to allow for even lighting at floor (20 min, 40 max lux lighting at night) 80 CRI minimum, frosted lens, for damp/wet locations. Height to be lower than 4' AFF, exact height to be determined on site with Client. Minimum size of fixtures to be 9" tall x 6" wide. The electrical contractor shall coordinate/determine the fixture quantity required for each covered walkway based on their final fixture selection.