



Drawing Index:

Drawing Number Title of Drawing

GENERAL DRAWINGS

G00 COVER SHEET / SITE LOCATION PLAN

CIVIL DRAWINGS

STORMWATER SYSTEM IMPROVEMENT SHEETS

C01 KEY PLAN
 C02 EXISTING SITE PLAN
 C03 STORMWATER MANAGEMENT PLAN
 C04 STORMWATER FACILITIES PLAN - SOUTH EAST
 C05 STORMWATER FACILITIES PLAN - NORTH EAST
 C06 STORMWATER PLAN AND PROFILES
 C07 UNDERGROUND DETENTION FACILITY DETAILS 1
 C08 UNDERGROUND DETENTION FACILITY DETAILS 2
 C09 CONCRETE BARRIER WALL SECTIONS 1
 C10 CONCRETE BARRIER WALL SECTIONS 2
 C11 STORMWATER DETENTION TYPICAL DETAILS
 C12 BARRIER WALL, WATER STANDPIPE, AND PAVEMENT DETAILS

SANITARY SYSTEM REPLACEMENT SHEETS

C13 SANITARY MAIN REPLACEMENT - WEST OF TRANS-CANADA HIGHWAY - STA: 0+000 - 0+120
 C14 SANITARY MAIN REPLACEMENT - WEST OF TRANS-CANADA HIGHWAY - STA: 0+120 - 0+240

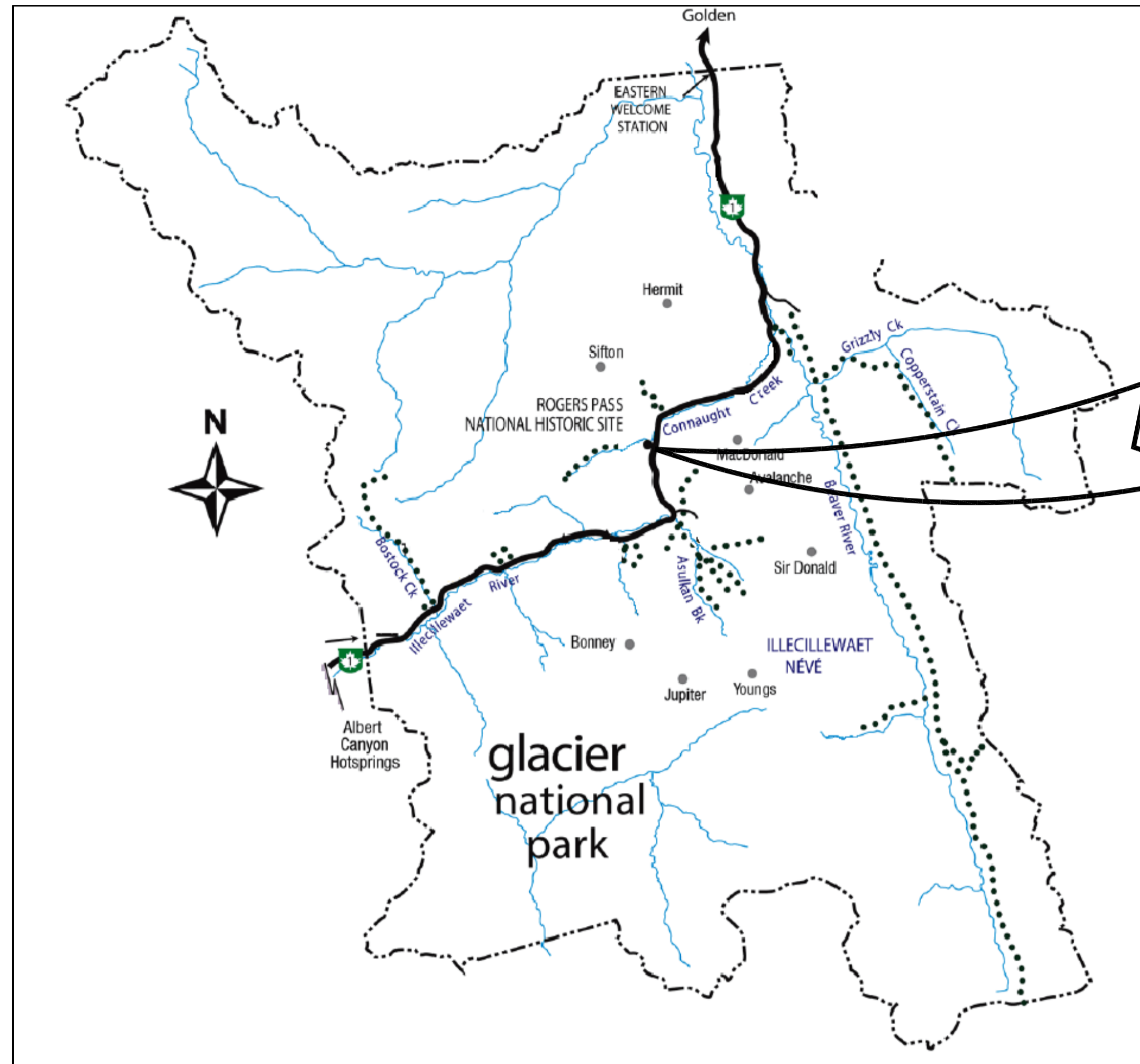
PAVING SHEETS

C15 PAVING PLAN - SOUTH EAST
 C16 PAVING PLAN - NORTH EAST

ADDITIONAL SHEETS

C17 KEY PLAN - ADDITIONAL STORMWATER AND PAVING WORKS ADDENDUM #1
 C18 STORM SEWER UPGRADES SOUTHWEST - PLAN
 C19 STORM SEWER UPGRADES NORTHWEST - PLAN
 C20 STORM SEWER UPGRADES PROFILES - WEST 1
 C21 STORM SEWER UPGRADES PROFILES - WEST 2
 C22 STORM SEWER UPGRADES PROFILES - WEST 3
 C23 STORM SEWER UPGRADES SECTIONS - WEST 1
 C24 STORM SEWER UPGRADES SECTIONS - WEST 2
 C25 STORMWATER DETENTION TYPICAL DETAILS AND ADDITIONAL PAVING AREAS

2017/05/11



SITE LOCATION PLAN

Client:

Public Works and Government Services Canada
 641-800 Burrard Street
 Vancouver, BC. V6Z 2V8
 Tel. 604 775 6822

Project:

Parks Canada - Rogers Pass
 Maintenance Compound Infrastructure Improvements - Phase 2
 Glacier National Park
 Rogers Pass, BC

Revision/	Description/Description	Date/Date
6	ISSUED FOR ADDENDUM #1	2017/05/11
5	ISSUED FOR TENDER	2017/03/23
4	100% COMPLETE - ISSUED FOR REVIEW	2017/03/14
3	90% COMPLETE - ISSUED FOR REVIEW	2017/02/17
2	66% COMPLETE - ISSUED FOR REVIEW	2016/12/14
1	33% COMPLETE - ISSUED FOR REVIEW	2016/08/19

Client/Client
PUBLIC WORKS AND GOVERNMENT SERVICES CANADA

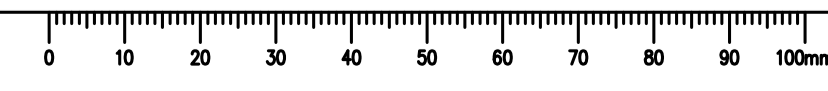
Project title/Titre du projet
PARKS CANADA- ROGERS PASS MAINTENANCE COMPOUND INFRASTRUCTURE IMPROVEMENTS PHASE 2

Consultant Signature Only
WEDLER ENGINEERING LLP
 Designed by/Concept par
SBR
 Drawn by/Dessiné par
DBB
 PWSC Project Manager/Administrateur de Projets TPSGC
TOM DUNPHY
 Regional Manager, Architectural and Engineering Services
 Gestionnaire régionale, Services d'architecture et de génie, TPSGC

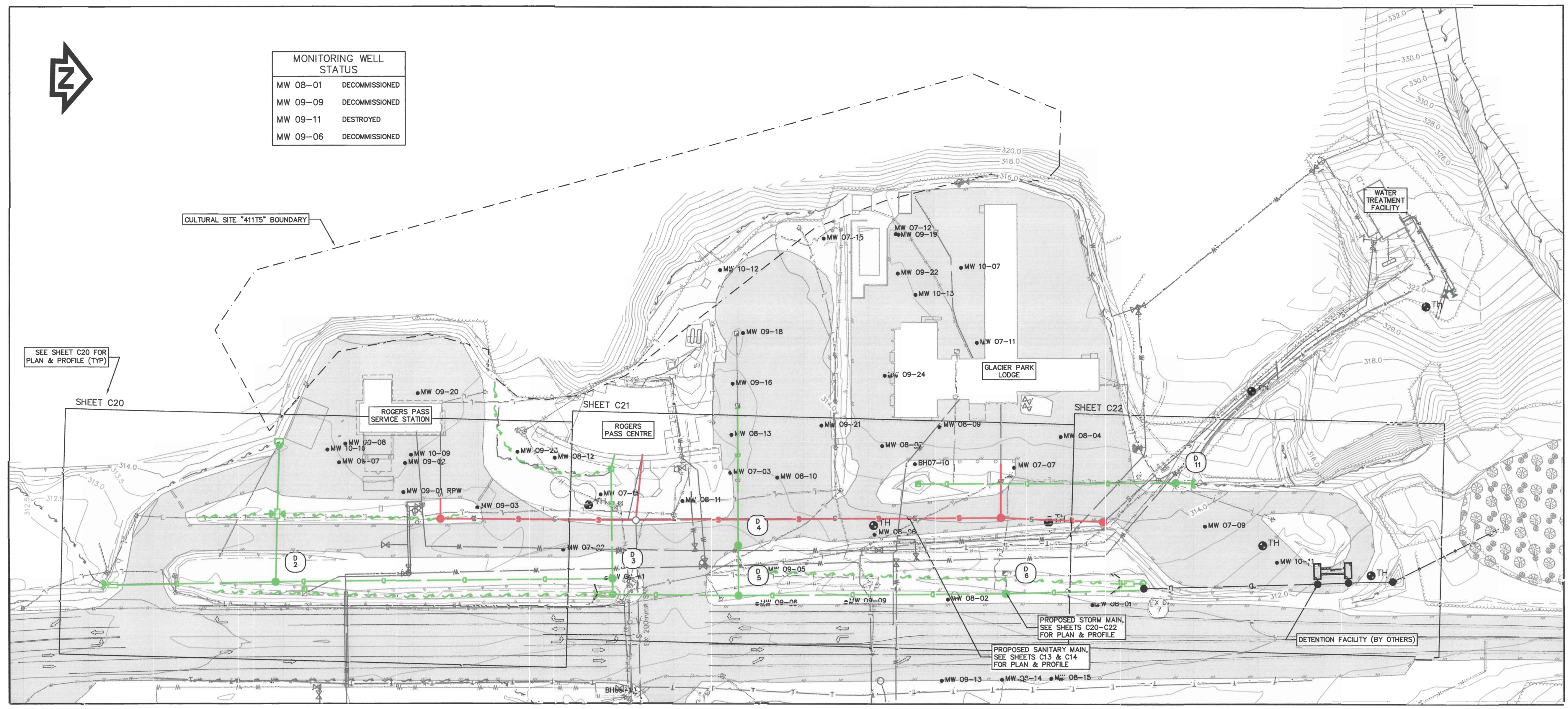
Drawing title/Titre du dessin
COVER SHEET / SITE LOCATION PLAN

Project No./No. du projet	Sheet/Feuille	Revision no./La Révision no.
R.076550.001	G00	6

N:\15\15-0218A - PWSC Standing Offer 8 - Glacier Natl Park - Stormwater\Design - Current Drawing Files\15-0218C - Rogers Pass_100%dwg 2017/5/12 10:33:53 AM bbarrow 2017 - WEDLER ENGINEERING LLP - ALL RIGHTS RESERVED - THIS DOCUMENT IS PROTECTED BY COPYRIGHT LAW AND MAY NOT BE REPRODUCED IN ANY MANNER, OR FOR ANY PURPOSE, EXCEPT BY WRITTEN PERMISSION OF COPYRIGHT HOLDER.

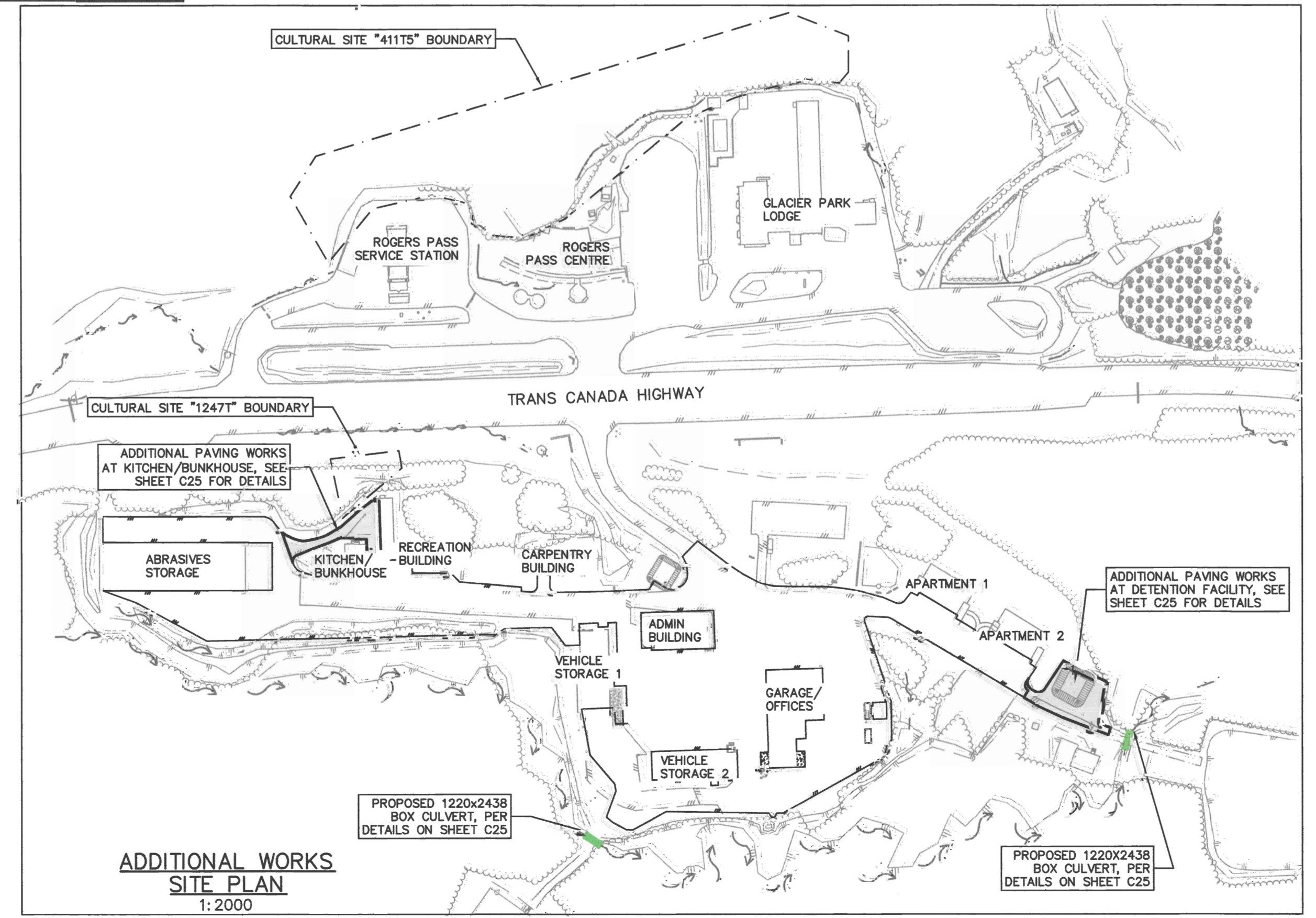
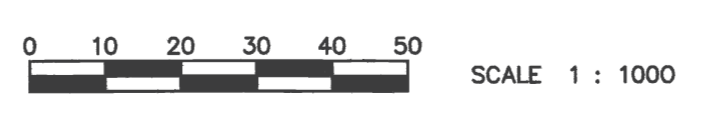


MONITORING WELL STATUS	
MW 08-01	DECOMMISSIONED
MW 09-09	DECOMMISSIONED
MW 09-11	DESTROYED
MW 09-06	DECOMMISSIONED



ADDITIONAL STORM WORKS KEY PLAN
1:750

SYMBOL		DESCRIPTION
		MANHOLE
		HEADWALL
		CAP
		CATCH BASIN
		SEDIMENT CHAMBER
		DETENTION CHAMBER
		GATE VALVE
		HYDRANT
		DRAINAGE
		SANITARY
		WATER
		GAS
		STREETLIGHTING
		HYDRO
		TELEPHONE
		CABLE
		EDGE OF PAVEMENT
		FENCE LINE
		TOP OF SLOPE
		GRADE BREAK
		GRASS/ROCK SWALE
		EXISTING SPOT ELEVATION
		ASPHALTIC PAVEMENT



ADDITIONAL WORKS SITE PLAN
1:2000

Revision/Description	Date/Date
4 REVISED: ISSUED FOR ADDENDUM #1	2017/05/11
3 ISSUED FOR CONSTRUCTION COSTING	2017/01/30
2 66% COMPLETE - ISSUED FOR REVIEW	2016/12/14
1 33% COMPLETE - ISSUED FOR REVIEW	2016/08/19

PUBLIC WORKS AND GOVERNMENT SERVICES CANADA

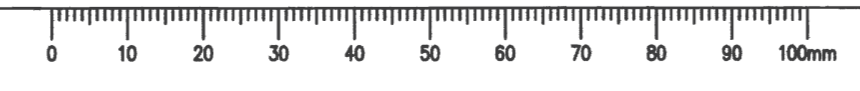
PARKS CANADA - ROGERS PASS MAINTENANCE COMPOUND INFRASTRUCTURE IMPROVEMENTS PHASE 2

Consultant Signature Only
WEDLER ENGINEERING LLP
Designed by/Concept par SBR
Drawn by/Dessiné par DBB
PWOSC Project Manager/Administrateur de Projets TPSCC
TOM DUNPHY
Regional Manager, Architectural and Engineering Services
Gestionnaire régional, Services d'architecture et de génie, TPSCC

KEY PLAN - ADDITIONAL STORM WATER AND PAVING WORKS ADDENDUM #1

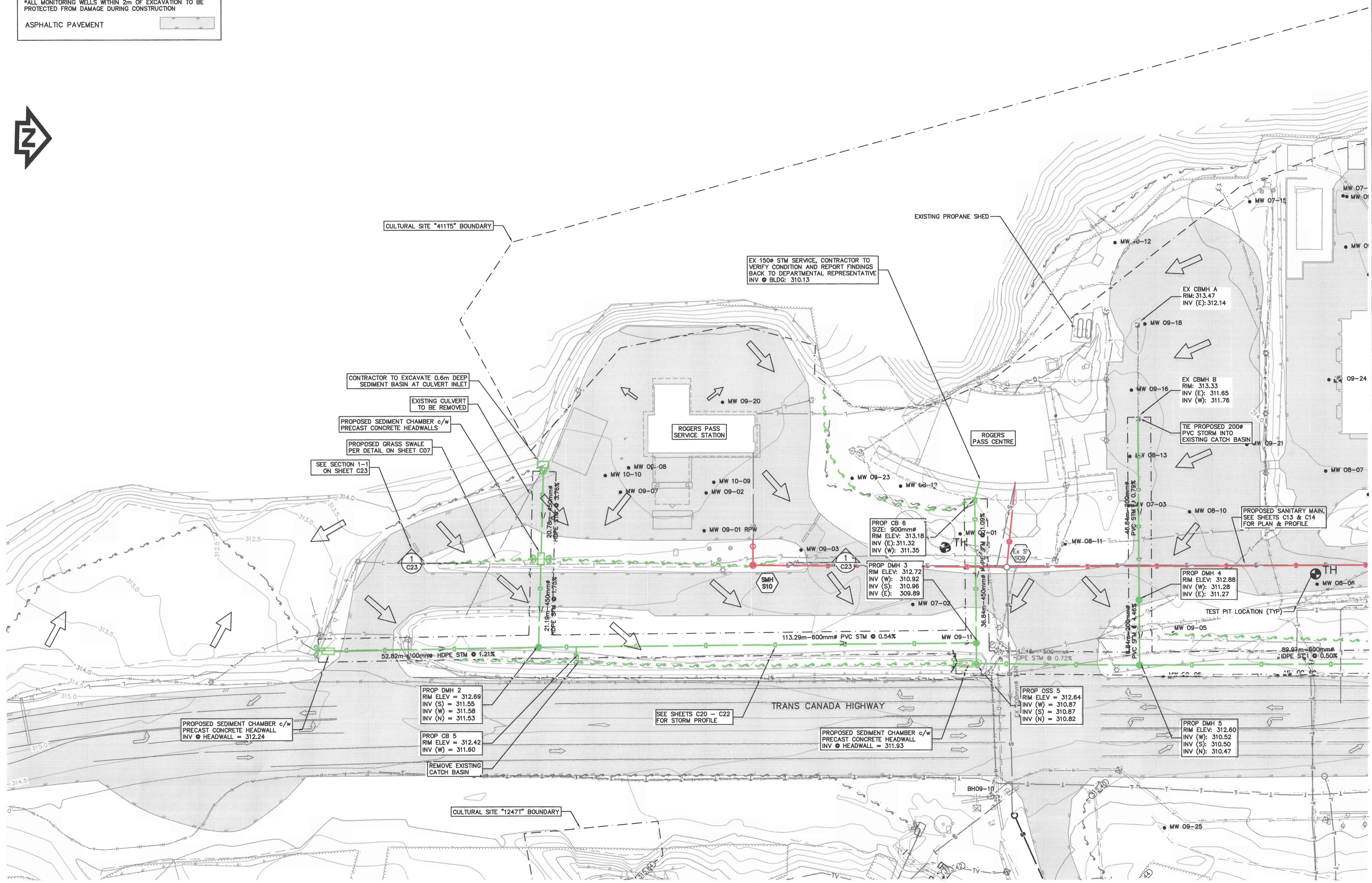
Project No./No. du projet R.076550.001	Sheet/Feuille C17	Revision no./La révision no. 4
--	-----------------------------	--

N:\15\15-0218C - Parks Canada - Glacier Park - Phase 2 Design - Current Drawing Files\15-0218C - Rogers Pass Storm Improvements.dwg 2017/05/12 10:13:43 AM bbarrow 2017 - WEDLER ENGINEERING LLP - ALL RIGHTS RESERVED - THIS DOCUMENT IS PROTECTED BY COPYRIGHT LAW AND MAY NOT BE REPRODUCED IN ANY MANNER, OR FOR ANY PURPOSE, EXCEPT BY WRITTEN PERMISSION OF COPYRIGHT HOLDER.



STORMWATER MANAGEMENT PLAN LEGEND

- EXISTING CONTOURS
- OVERLAND FLOW ROUTE
- INFILTRATION SWALE
- CATCH BASIN MANHOLE
- CATCH BASIN
- 2m MONITORING WELL PROTECTION ZONE*
- *ALL MONITORING WELLS WITHIN 2m OF EXCAVATION TO BE PROTECTED FROM DAMAGE DURING CONSTRUCTION
- ASPHALTIC PAVEMENT



Revision/	Description/Description	Date/Date
4	REVISED; ISSUED FOR ADDENDUM #1	2017/06/11
3	ISSUED FOR CONSTRUCTION COSTING	2017/01/30
2	66% COMPLETE - ISSUED FOR REVIEW	2016/12/14
1	33% COMPLETE - ISSUED FOR REVIEW	2016/08/16

PUBLIC WORKS AND GOVERNMENT SERVICES CANADA

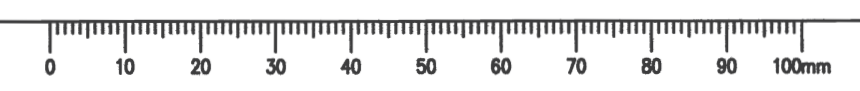
PARKS CANADA - ROGERS PASS MAINTENANCE COMPOUND INFRASTRUCTURE IMPROVEMENTS PHASE 2

Consultant Signature Only
WEDLER ENGINEERING LLP
SBR
DBB
Tom Dunphy
Regional Manager, Architectural and Engineering Services

STORM SEWER UPGRADES SOUTH WEST - PLAN

Project No./No. du projet R.076550.001	Sheet/Feuille C18	Revision no./La Révision no. 4
--	-----------------------------	--

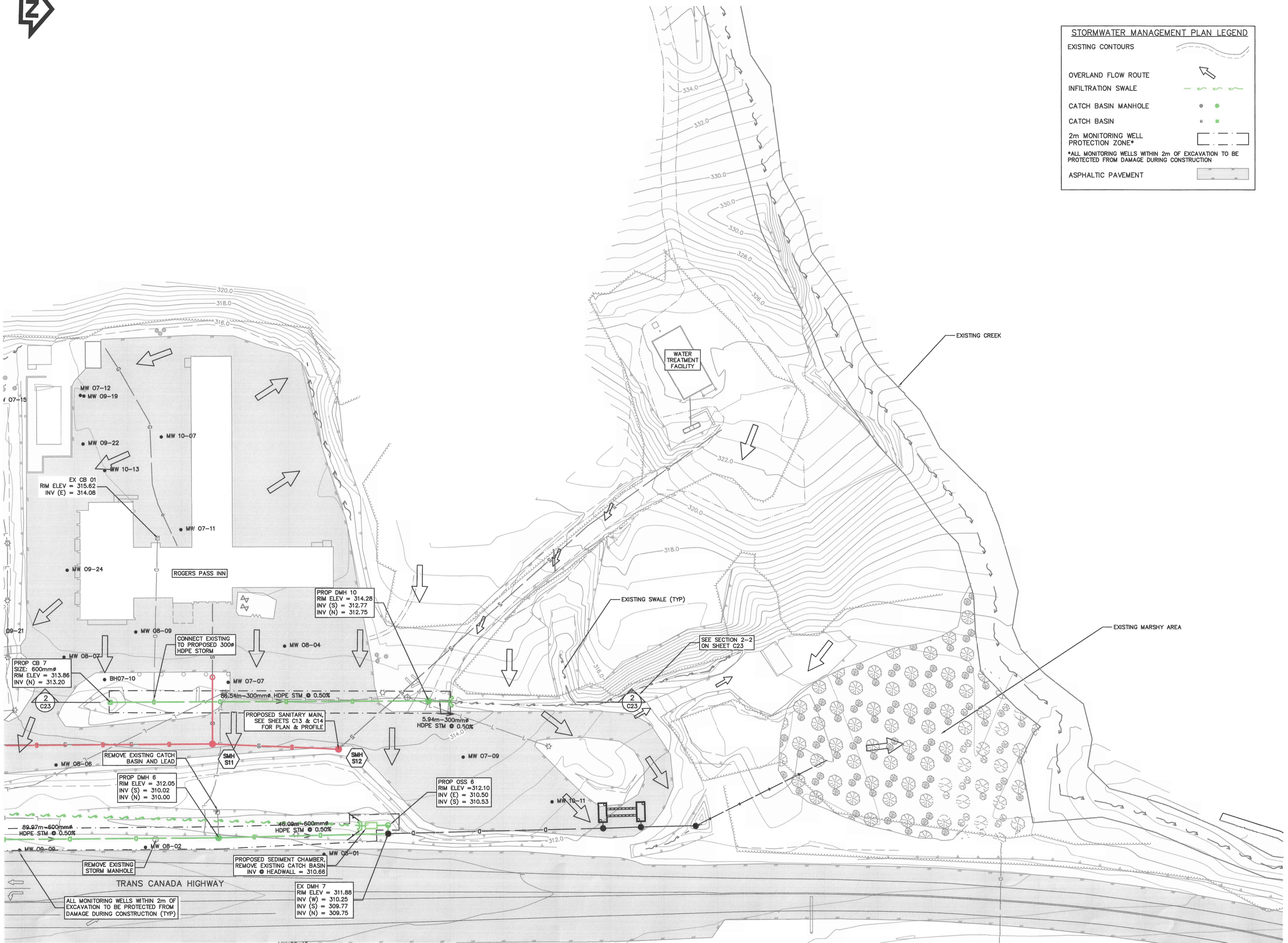
N:\15\15-0218C - Phase 2\Design\1 - Current Drawing Files\15-0218C - Rogers Pass Storm Improvements.dwg 2017/05/12 10:13:48 AM borrow 2017 - WEDLER ENGINEERING LLP - ALL RIGHTS RESERVED - THIS DOCUMENT IS PROTECTED BY COPYRIGHT LAW AND MAY NOT BE REPRODUCED IN ANY MANNER, OR FOR ANY PURPOSE, EXCEPT BY WRITTEN PERMISSION OF COPYRIGHT HOLDER.





STORMWATER MANAGEMENT PLAN LEGEND

- EXISTING CONTOURS
- OVERLAND FLOW ROUTE
- INFILTRATION SWALE
- CATCH BASIN MANHOLE
- CATCH BASIN
- 2m MONITORING WELL PROTECTION ZONE*
- *ALL MONITORING WELLS WITHIN 2m OF EXCAVATION TO BE PROTECTED FROM DAMAGE DURING CONSTRUCTION
- ASPHALTIC PAVEMENT



Revision/Revision	Description/Description	Date/Date
4	REVISED; ISSUED FOR ADDENDUM #1	2017/05/11
3	ISSUED FOR CONSTRUCTION COSTING	2017/01/20
2	65% COMPLETE - ISSUED FOR REVIEW	2016/12/14
1	33% COMPLETE - ISSUED FOR REVIEW	2016/08/19

Client/client
PUBLIC WORKS AND GOVERNMENT SERVICES CANADA

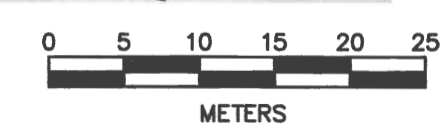
Project title/Titre du projet
PARKS CANADA - ROGERS PASS MAINTENANCE COMPOUND INFRASTRUCTURE IMPROVEMENTS PHASE 2

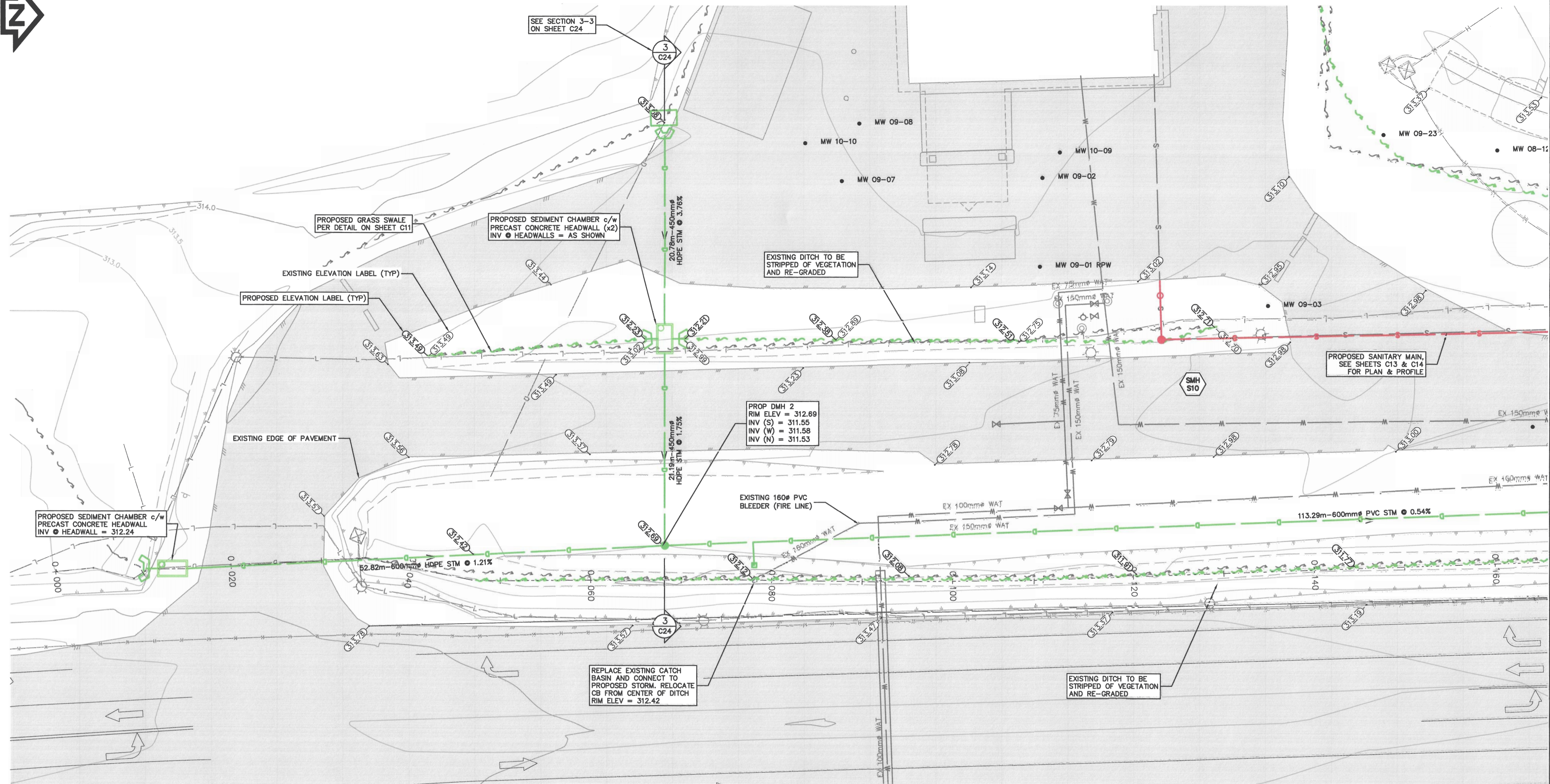
Consultant Signature Only
WEDLER ENGINEERING LLP
 Designed by/Concept par
 SBR
 Drawn by/Dessiné par
 DBB
 PWGSC Project Manager/Administrateur de Projets TPSSC
TOM DUNPHY
 Regional Manager, Architectural and Engineering Services
 Gestionnaire régionale, Services d'architecture et de génie, TPSSC

Drawing title/Titre du dessin
STORM SEWER UPGRADES NORTH WEST - PLAN

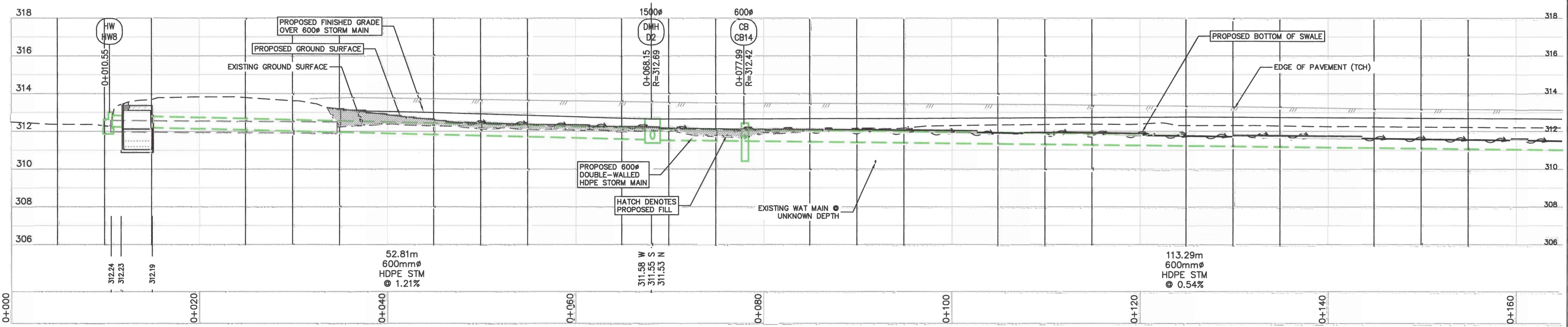
Project No./No. du projet R.076550.001	Sheet/ Feuille C19	Revision no./ La Révision no. 4
--	------------------------------	--

N:\15\15-0218C - Parks Canada - Glacier Natl Park - Phase 2\Design\ - Current Drawing Files\15-0218C - Rogers Pass Storm Improvements.dwg 2017/05/12 10:13:53 AM bbarrow
 2017 - WEDLER ENGINEERING LLP - ALL RIGHTS RESERVED - THIS DOCUMENT IS PROTECTED BY COPYRIGHT LAW AND MAY NOT BE REPRODUCED IN ANY MANNER, OR FOR ANY PURPOSE, EXCEPT BY WRITTEN PERMISSION OF COPYRIGHT HOLDER.





PLAN 1:250



PROFILE 1:250H 1:125V

MATCHLINE - SEE PLAN AND PROFILE ON SHEET C21

Revision/Revision	Description/Description	Date/Date
4	REVISED; ISSUED FOR ADDENDUM #1	2017/05/11
3	ISSUED FOR CONSTRUCTION COSTING	2017/01/30
2	66% COMPLETE - ISSUED FOR REVIEW	2016/12/14
1	33% COMPLETE - ISSUED FOR REVIEW	2016/08/16

PUBLIC WORKS AND GOVERNMENT SERVICES CANADA

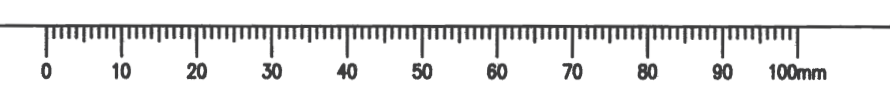
Project Title/Titre du projet
PARKS CANADA - ROGERS PASS MAINTENANCE COMPOUND INFRASTRUCTURE IMPROVEMENTS PHASE 2

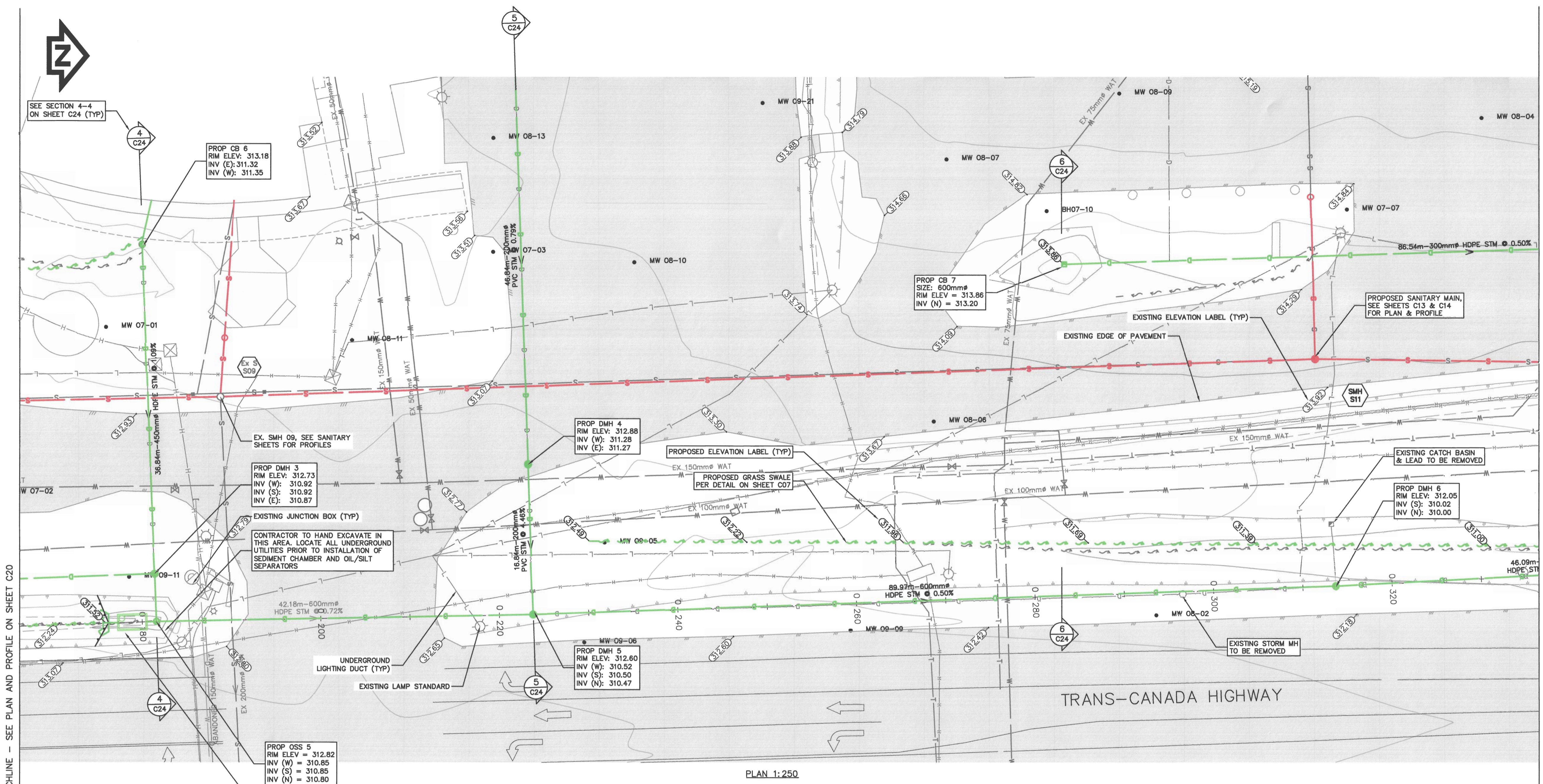
Consultant Signature Only
WEDLER ENGINEERING LLP
 Designed by/Concept par
SBR
 Drawn by/Dessiné par
DBB
 PWGSC Project Manager/Administrateur de Projets TPSCG
TOM DUNPHY
 Regional Manager, Architectural and Engineering Services
 Gestionnaire régional, Services d'architecture et de génie, TPSCG

Drawing Title/Titre du dessin
STORM SEWER UPGRADES PROFILES - WEST 1

Project No./No. du projet R.076550.001	Sheet/Feuille C20	Revision no./No. de Révision 4
--	-----------------------------	--

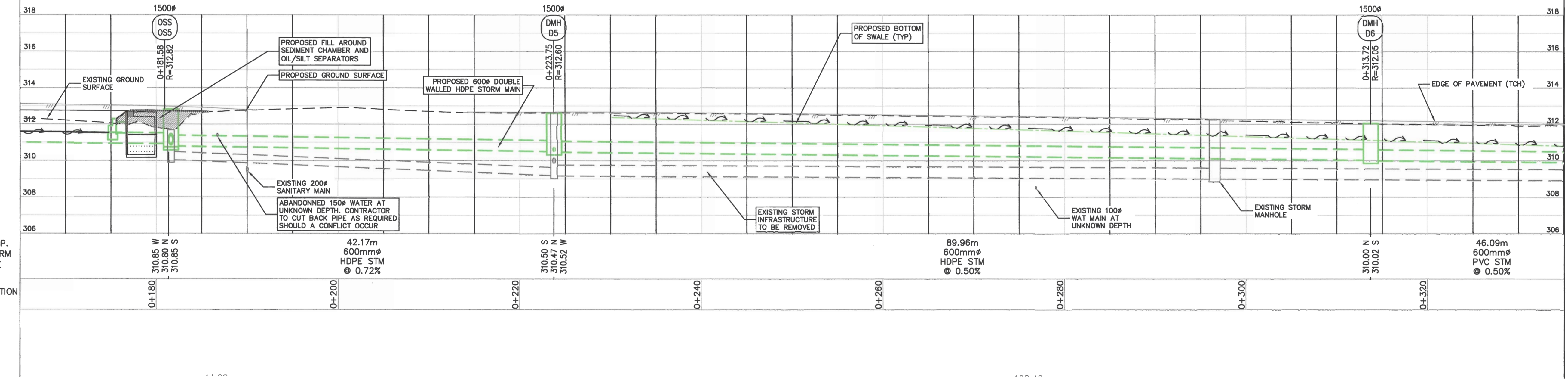
N:\15\15-0218C - Parks Canada - Phase 2\Design - Current Drawing Files\15-0218C - Rogers Pass Storm Improvements.dwg - 2017/05/12 10:27:44 AM bborrow
 2017 - WEDLER ENGINEERING LLP - ALL RIGHTS RESERVED - THIS DOCUMENT IS PROTECTED BY COPYRIGHT LAW AND MAY NOT BE REPRODUCED IN ANY MANNER, OR FOR ANY PURPOSE, EXCEPT BY WRITTEN PERMISSION OF COPYRIGHT HOLDER.
 PWGSC - A1 - 841X594





MATCHLINE - SEE PLAN AND PROFILE ON SHEET C20

MATCHLINE - SEE PLAN AND PROFILE ON SHEET C22



PROP. STORM PIPE

STATION

PROFILE 1:250H 1:125V

Revision/Revision	Description/Description	Date/Date
4	REVISED; ISSUED FOR ADDENDUM #1	2017/05/11
3	ISSUED FOR CONSTRUCTION COSTING	2017/01/30
2	65% COMPLETE - ISSUED FOR REVIEW	2016/12/14
1	33% COMPLETE - ISSUED FOR REVIEW	2016/08/18

PUBLIC WORKS AND GOVERNMENT SERVICES CANADA

PARKS CANADA - ROGERS PASS MAINTENANCE COMPOUND INFRASTRUCTURE IMPROVEMENTS PHASE 2

Consultant Signature Only
WEDLER ENGINEERING LLP
 Designed by/Concept par SBR
 Drawn by/Dessiné par DBB
 PWGSC Project Manager/Administrateur de Projets TPSGC
TOM DUNPHY
 Regional Manager, Architectural and Engineering Services
 Gestionnaire régionale, Services d'architectural et de génie, TPSGC
 Drawing Title/Titre du dessin

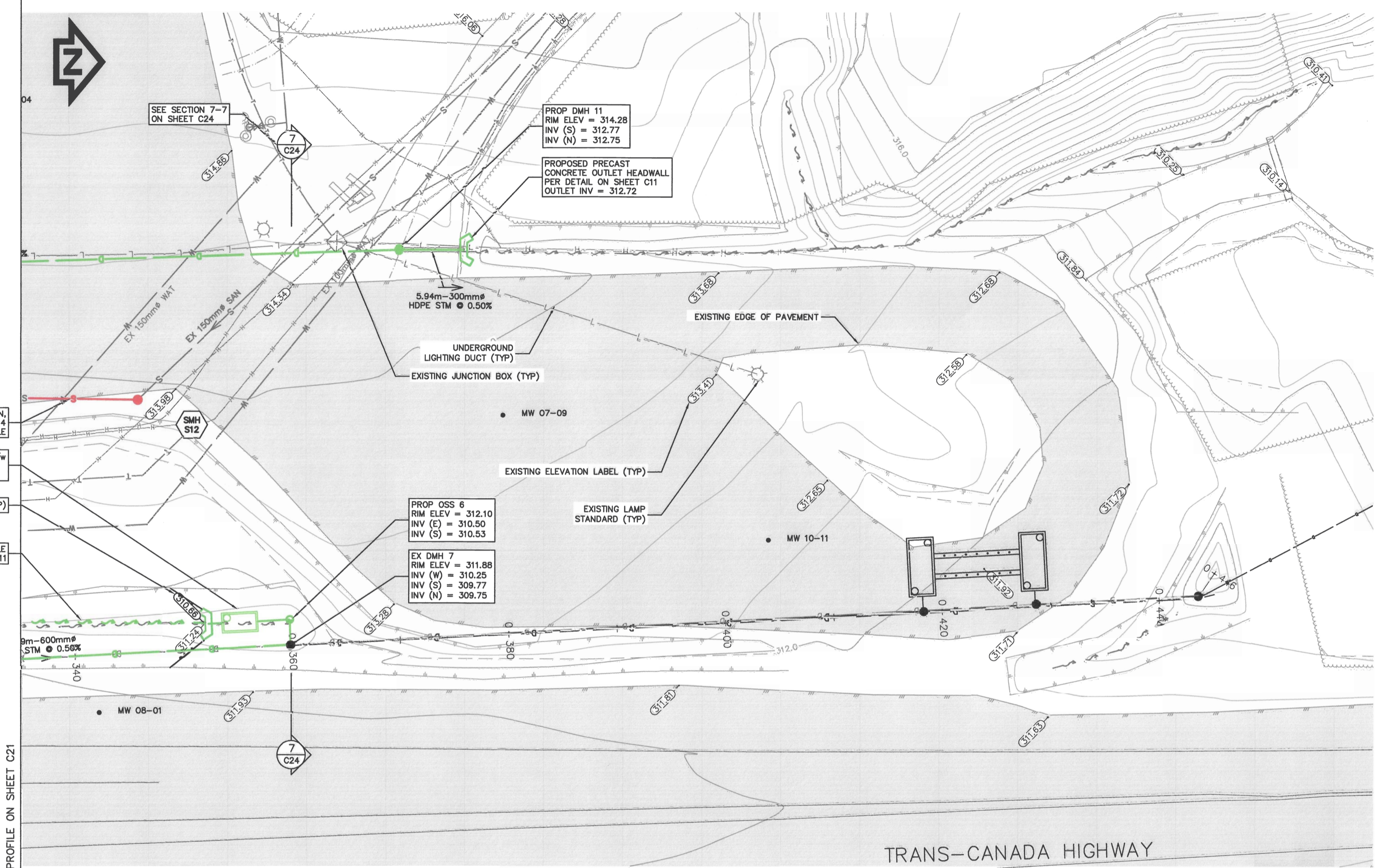
STORM SEWER UPGRADES PROFILES - WEST 2

Project No./No. du projet R.076550.001	Sheet/Feuille C21	Revision no./La Révision no. 4
--	-----------------------------	--

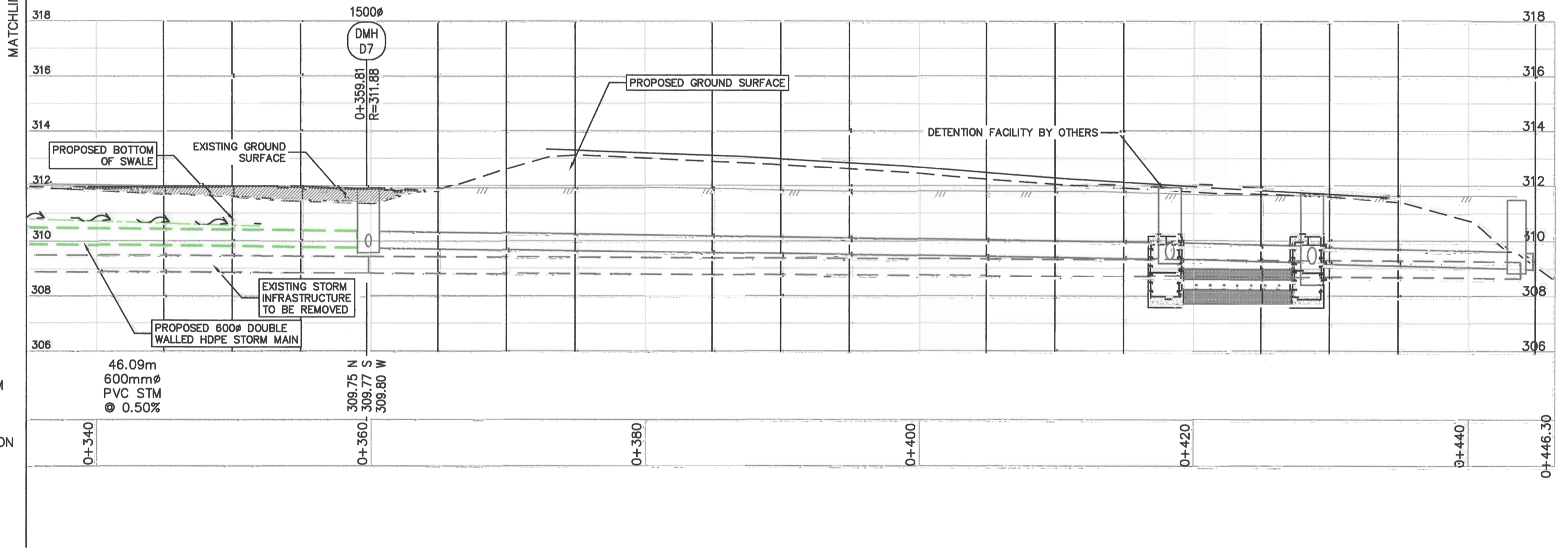
N:\15\15-0278C - Parks Canada - Phase 2\Design\ - Current Drawing Files\15-0278C - Rogers Pass Storm Improvements.dwg 2017/05/12 10:27:53 AM bbarrow 2017 - WEDLER ENGINEERING LLP - ALL RIGHTS RESERVED - THIS DOCUMENT IS PROTECTED BY COPYRIGHT LAW AND MAY NOT BE REPRODUCED IN ANY MANNER, OR FOR ANY PURPOSE, EXCEPT BY WRITTEN PERMISSION OF COPYRIGHT HOLDER.



N:\15\15-0218C - Parks Canada - Glacier Hill Park - Phase 2\Design - Current\Drawing Files\15-0218C - Rogers Pass Storm Improvements.dwg 2017/05/12 10:28:03 AM hboromy
2017 - WEDLER ENGINEERING LLP - ALL RIGHTS RESERVED - THIS DOCUMENT IS PROTECTED BY COPYRIGHT LAW AND MAY NOT BE REPRODUCED IN ANY MANNER, OR FOR ANY PURPOSE, EXCEPT BY WRITTEN PERMISSION OF COPYRIGHT HOLDER.



PLAN 1:250



PROFILE 1:250H 1:125V



Revision/Revisão	Description/Description	Date/Date
4	REVISED; ISSUED FOR ADDENDUM #1	2017/05/11
3	ISSUED FOR CONSTRUCTION COSTING	2017/01/30
2	66% COMPLETE - ISSUED FOR REVIEW	2016/12/14
1	33% COMPLETE - ISSUED FOR REVIEW	2016/08/16

Client/client

PUBLIC WORKS AND GOVERNMENT SERVICES CANADA

Project title/Titre du projet

PARKS CANADA - ROGERS PASS MAINTENANCE COMPOUND INFRASTRUCTURE IMPROVEMENTS PHASE 2

Consultant Signature Only

WEDLER ENGINEERING LLP

Designed by/Concept par SBR

Drawn by/Dessiné par DBB

PWGSC Project Manager/Administrateur de Projets TPSGC

TOM DUNPHY

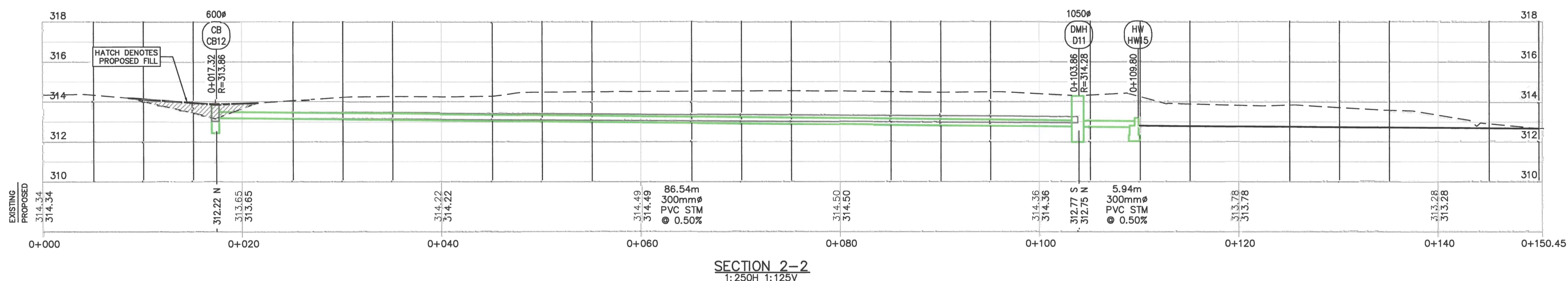
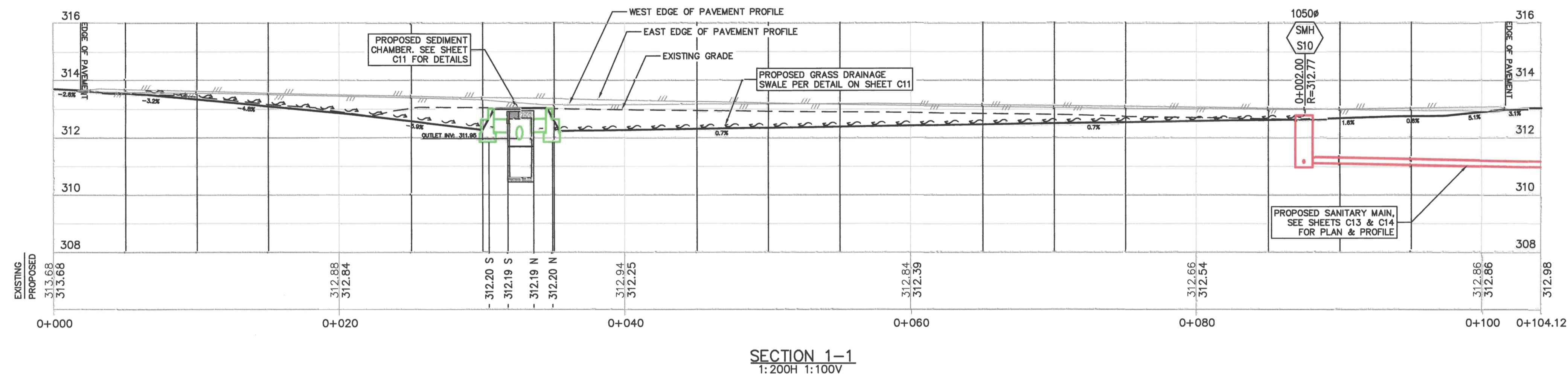
Regional Manager, Architectural and Engineering Services / Gestionnaire régionale, Services d'architecture et de génie, TPSGC

Drawing title/Titre du dessin

STORM SEWER UPGRADES PROFILES - WEST 3

Project No./No. du projet	Sheet/Feuille	Revision no./La Révision no.
R.076550.001	C22	4





Revision/Revision	Description/Description	Date/Date
4	REVISED; ISSUED FOR ADDENDUM #1	2017/06/11
3	ISSUED FOR CONSTRUCTION COSTING	2017/01/30
2	60% COMPLETE - ISSUED FOR REVIEW	2016/12/14
1	33% COMPLETE - ISSUED FOR REVIEW	2016/08/18

Client/client

PUBLIC WORKS AND GOVERNMENT SERVICES CANADA

Project title/Titre du projet

PARKS CANADA - ROGERS PASS MAINTENANCE COMPOUND INFRASTRUCTURE IMPROVEMENTS PHASE 2

Consultant: Signature Only
WEDLER ENGINEERING LLP
 Designed by/Concept par: **SBR**
 Drawn by/Dessiné par: **DBB**

PWSSC Project Manager/Administrateur de Projets TPSSC
TOM DUNPHY

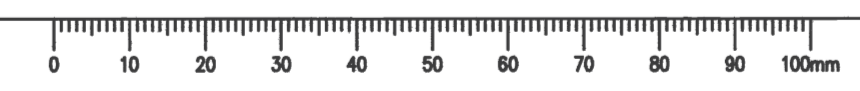
Regional Manager, Architectural and Engineering Services
 Gestionnaire régionale, Services d'architecture et de génie, TPSSC

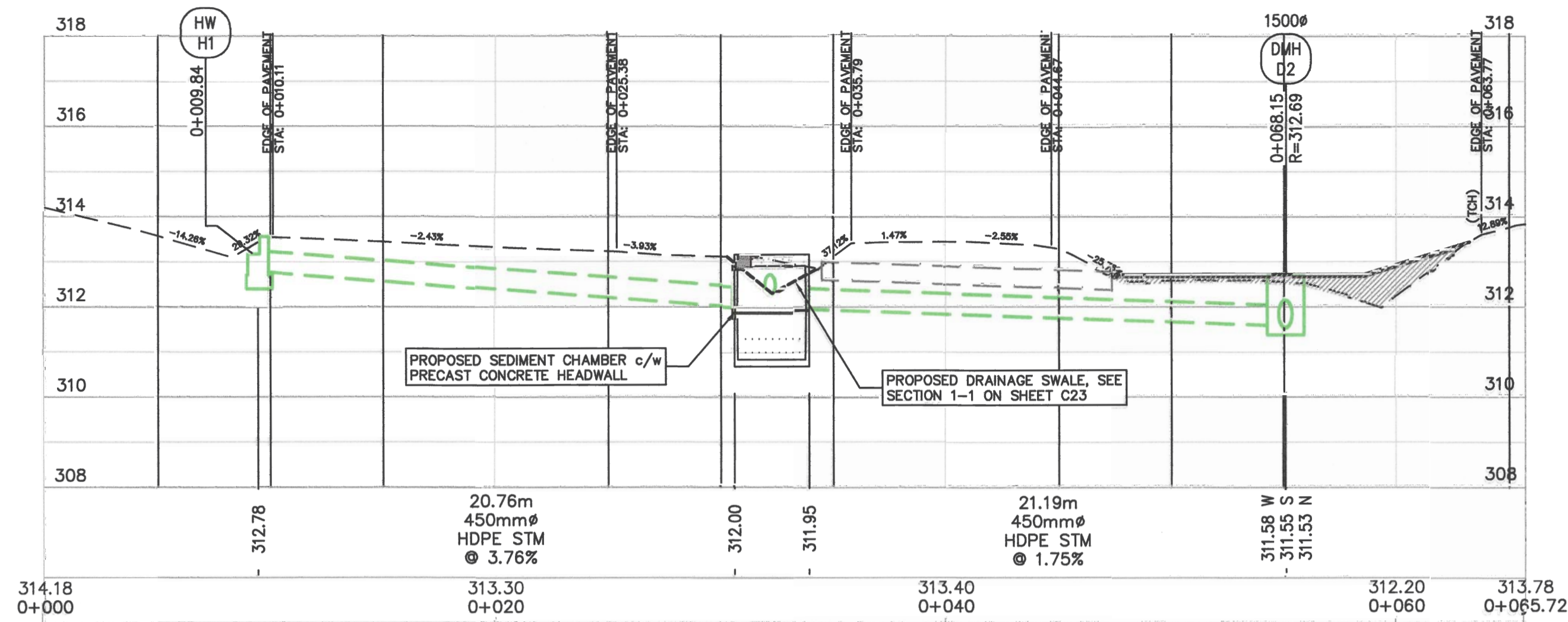
Drawing title/Titre du dessin

STORM SEWER UPGRADES SECTIONS - WEST 1

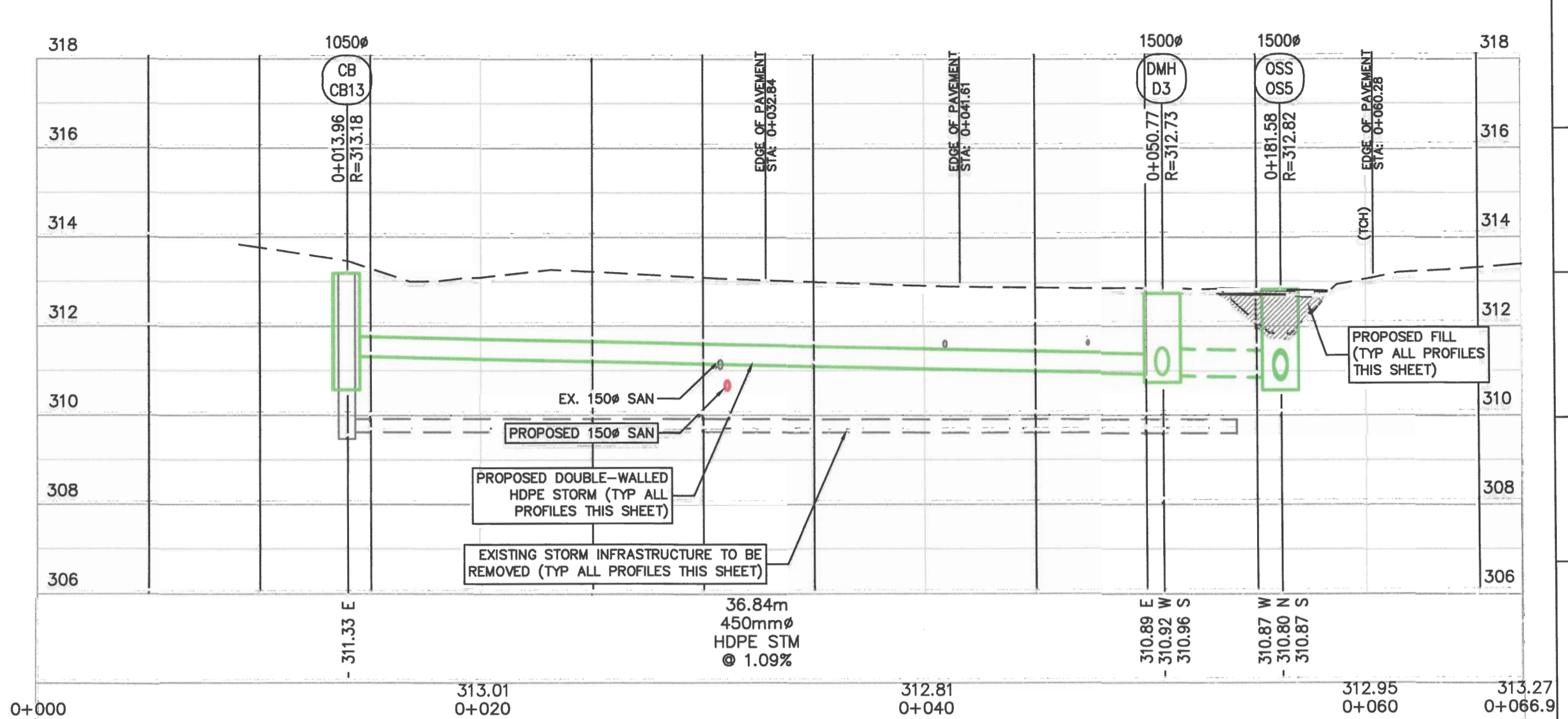
Project No./No. du projet	Sheet/Feuille	Revision no./La Révision no.
R.076550.001	C23	4

N:\15\15-0218C - Parks Canada - Glacier Natl Park - Phase 2\Design - Current Drawing Files\15-0218C - Rogers Pass Storm Improvements.dwg 2017/5/12 10:21:22 AM bbarrow 2017 - WEDLER ENGINEERING LLP - ALL RIGHTS RESERVED - THIS DOCUMENT IS PROTECTED BY COPYRIGHT LAW AND MAY NOT BE REPRODUCED IN ANY MANNER, OR FOR ANY PURPOSE, EXCEPT BY WRITTEN PERMISSION OF COPYRIGHT HOLDER.

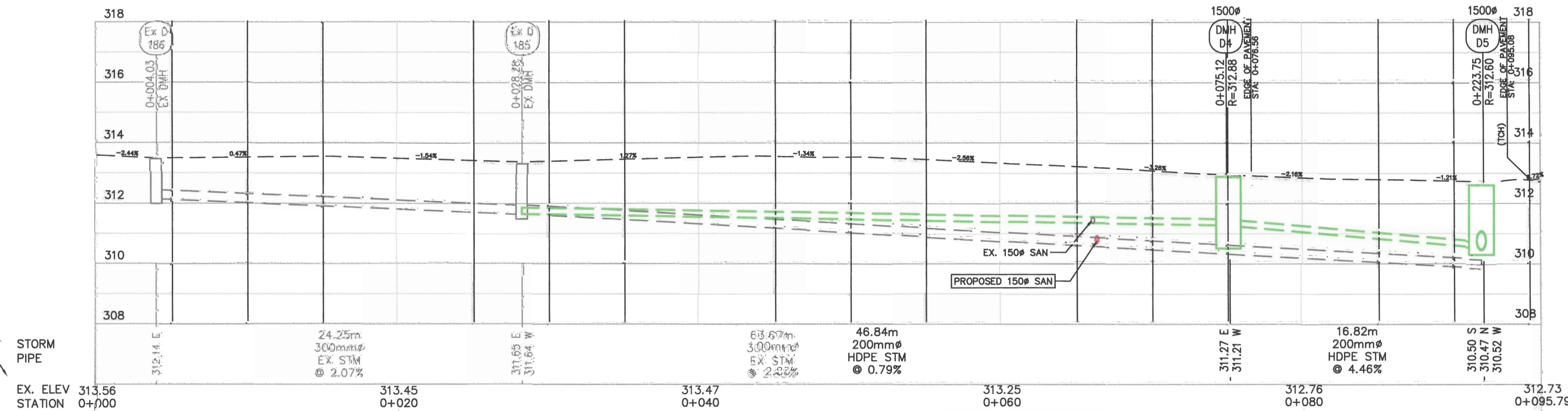




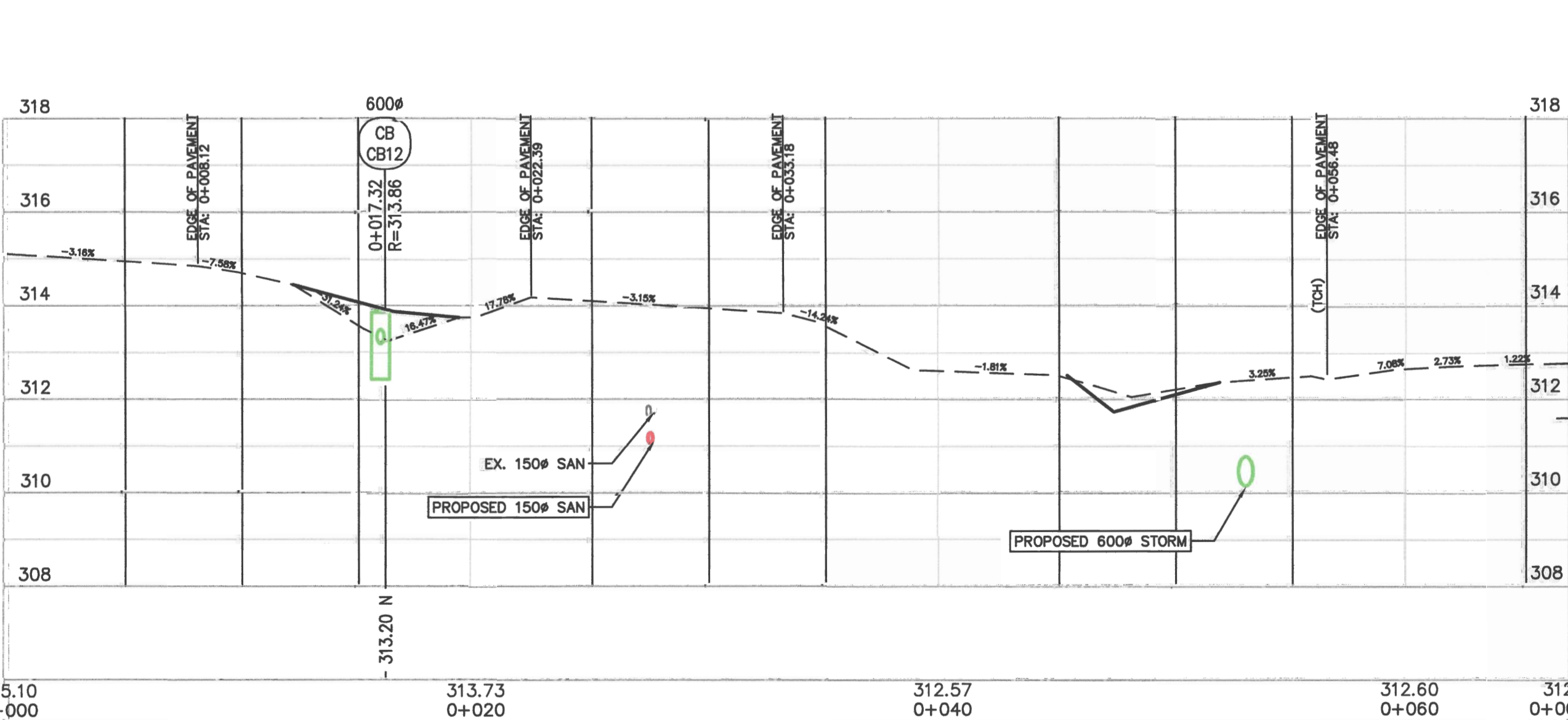
SECTION 3-3
1:200H 1:100V



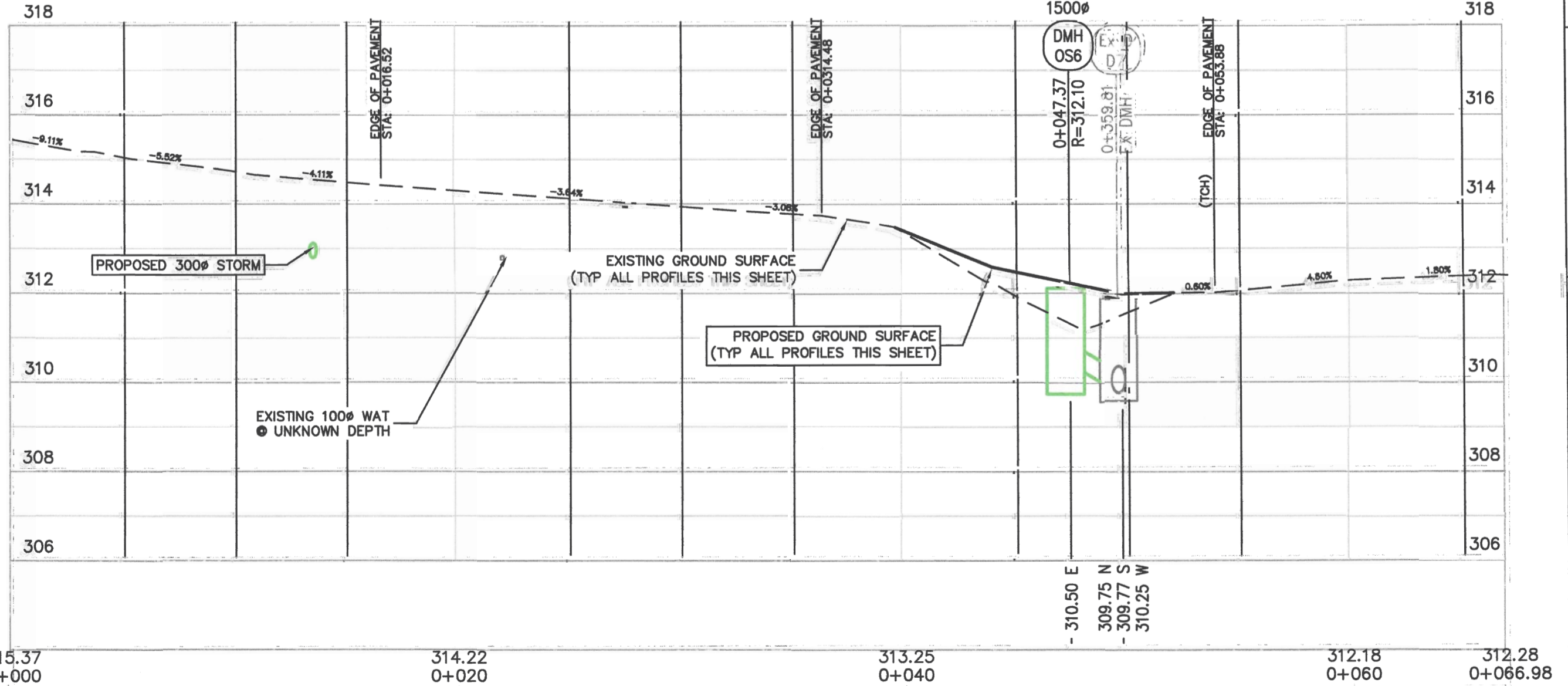
SECTION 4-4
1:200H 1:100V



SECTION 5-5
1:200H 1:100V



SECTION 6-6
1:200H 1:100V



SECTION 7-7
1:200H 1:100V

Revision/Revision	Description/Description	Date/Date
4	REVISED; ISSUED FOR ADDENDUM #1	2017/05/11
3	ISSUED FOR CONSTRUCTION COSTING	2017/01/30
2	66% COMPLETE - ISSUED FOR REVIEW	2016/12/14
1	33% COMPLETE - ISSUED FOR REVIEW	2016/08/19

PUBLIC WORKS AND GOVERNMENT SERVICES CANADA

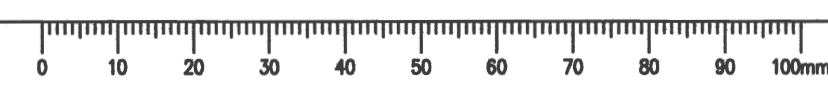
Project title/Titre du projet
PARKS CANADA - ROGERS PASS MAINTENANCE COMPOUND INFRASTRUCTURE IMPROVEMENTS PHASE 2

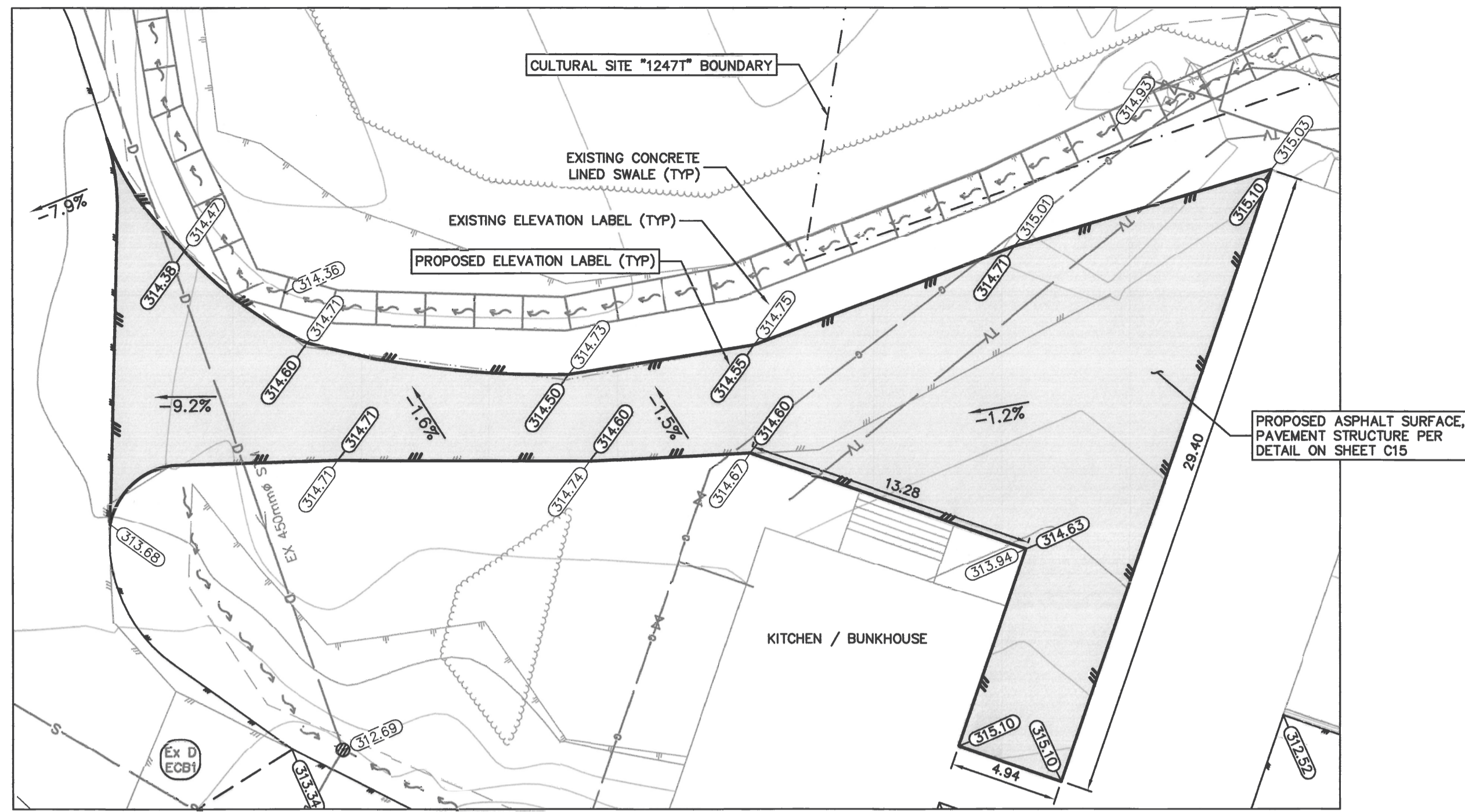
Contractor Signature Only
WEDLER ENGINEERING LLP
Designed by/Concept par
SBR
Drawn by/Dessiné par
DBB
PWSSC Project Manager/Administrateur de Projets TPSSC
TOM DUNPHY
Regional Manager, Architectural and Engineering Services
Gestionnaire régionale, Services d'architectural et de génie, TPSSC

Drawing title/Titre du dessin
STORM SEWER UPGRADES SECTIONS - WEST 2

Project No./No. du projet R.076550.001	Sheet/Feuille C24	Revision no./La Révision no. 4
--	-----------------------------	--

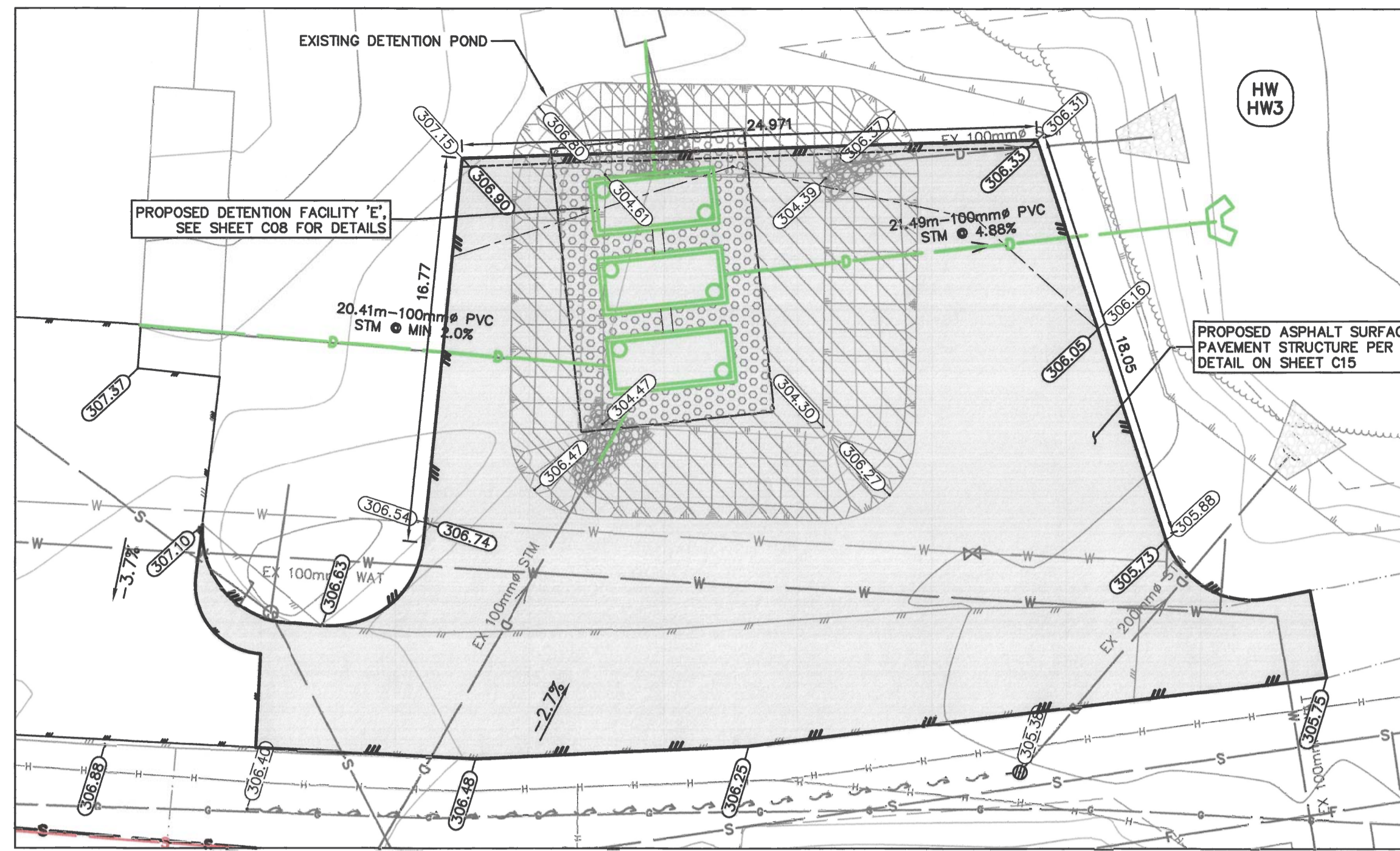
N:\15\1515-0218C - Parks Canada - Checker North Park - Phase 2\Design - Current\Drawings\Files\1515-0218C - Rogers Pass Storm Improvements.dwg, 2017/05/12 10:21:38 AM lbbrown 2017 - WEDLER ENGINEERING LLP - ALL RIGHTS RESERVED - THIS DOCUMENT IS PROTECTED BY COPYRIGHT LAW AND MAY NOT BE REPRODUCED IN ANY MANNER, OR FOR ANY PURPOSE, EXCEPT BY WRITTEN PERMISSION OF COPYRIGHT HOLDER.





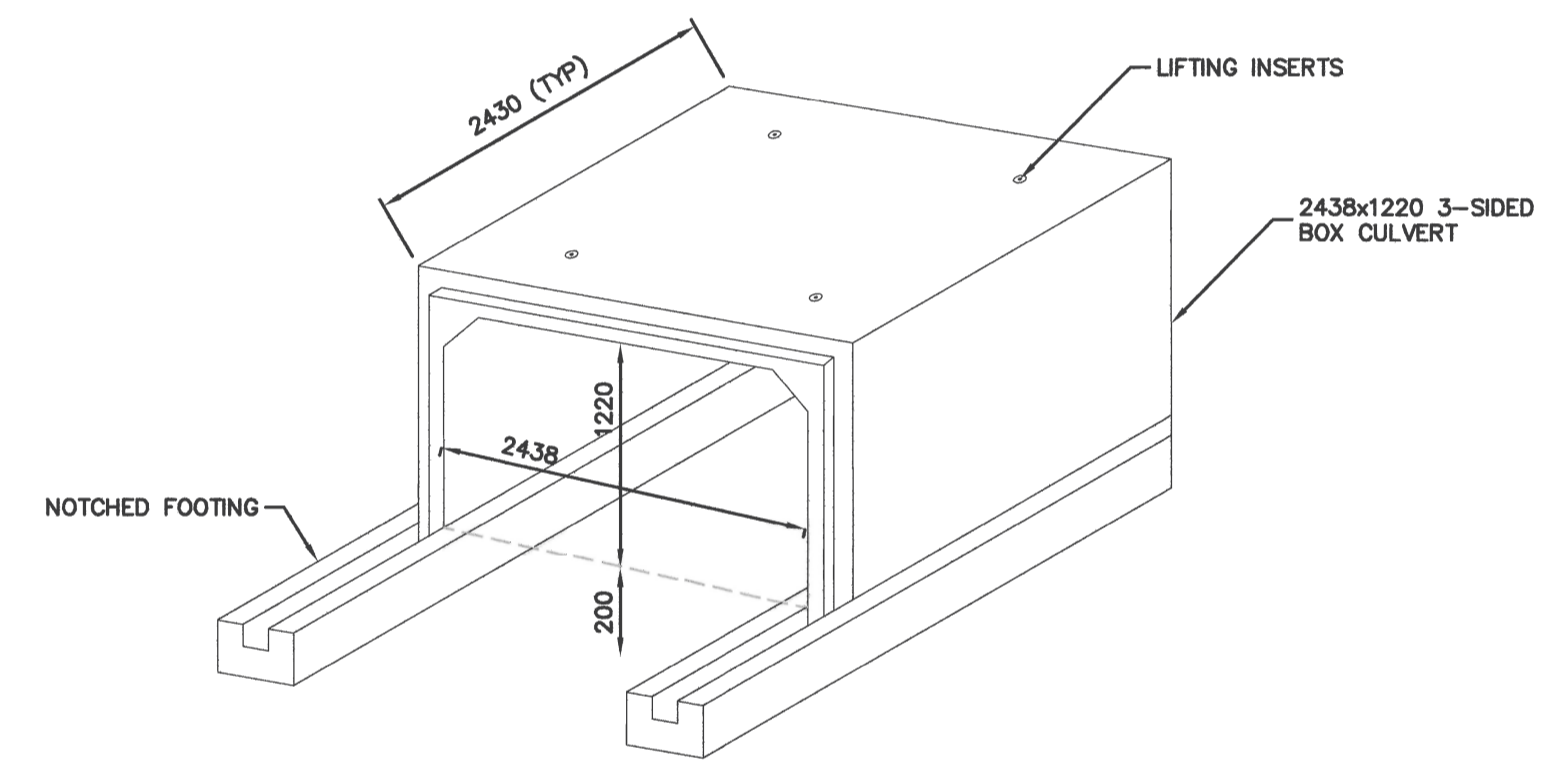
ADDITIONAL PAVING BY KITCHEN/BUNKHOUSE DETAIL
 1:200

APPROX. AREA = 460 sq.m

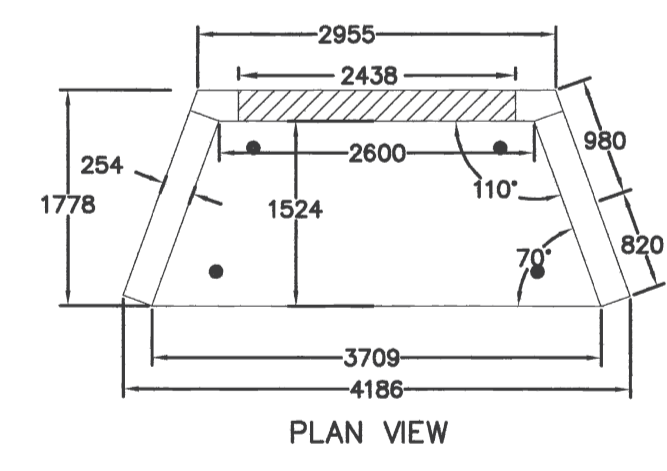


ADDITIONAL PAVING BY DETENTION FACILITY 'E' DETAIL
 1:200

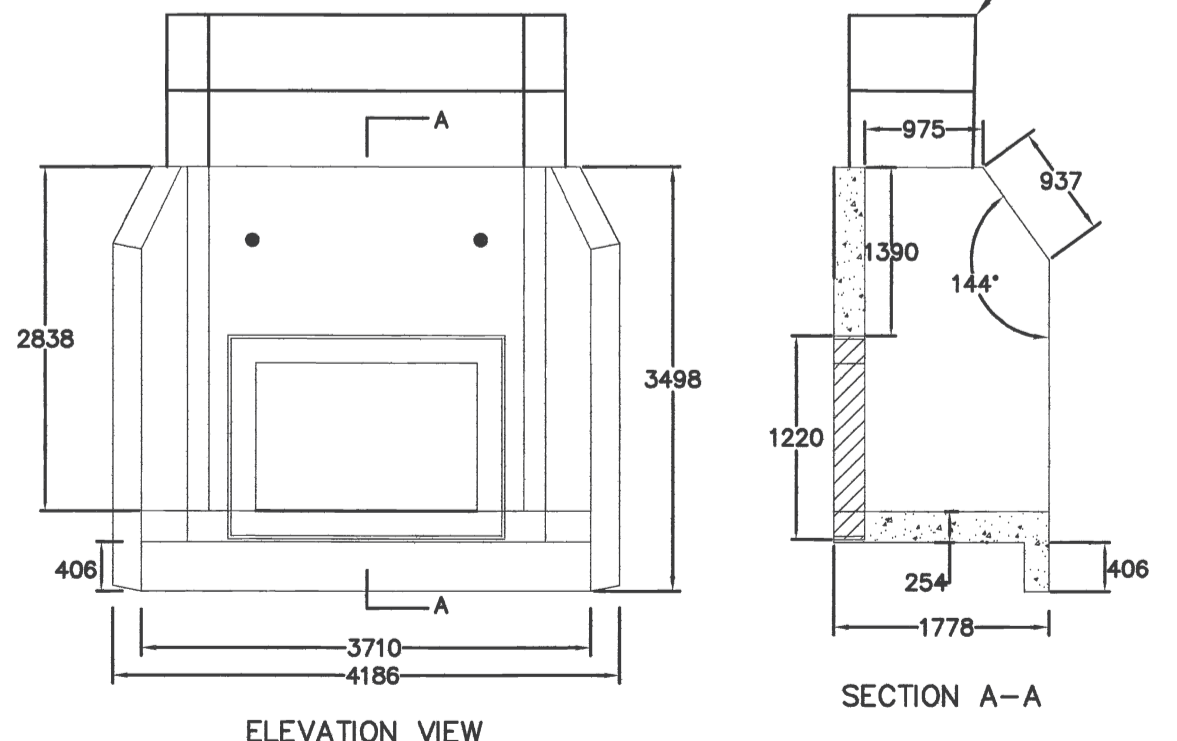
APPROX. AREA = 840 sq.m



PRECAST 3-SIDED BOX CULVERT DETAIL
 1:50



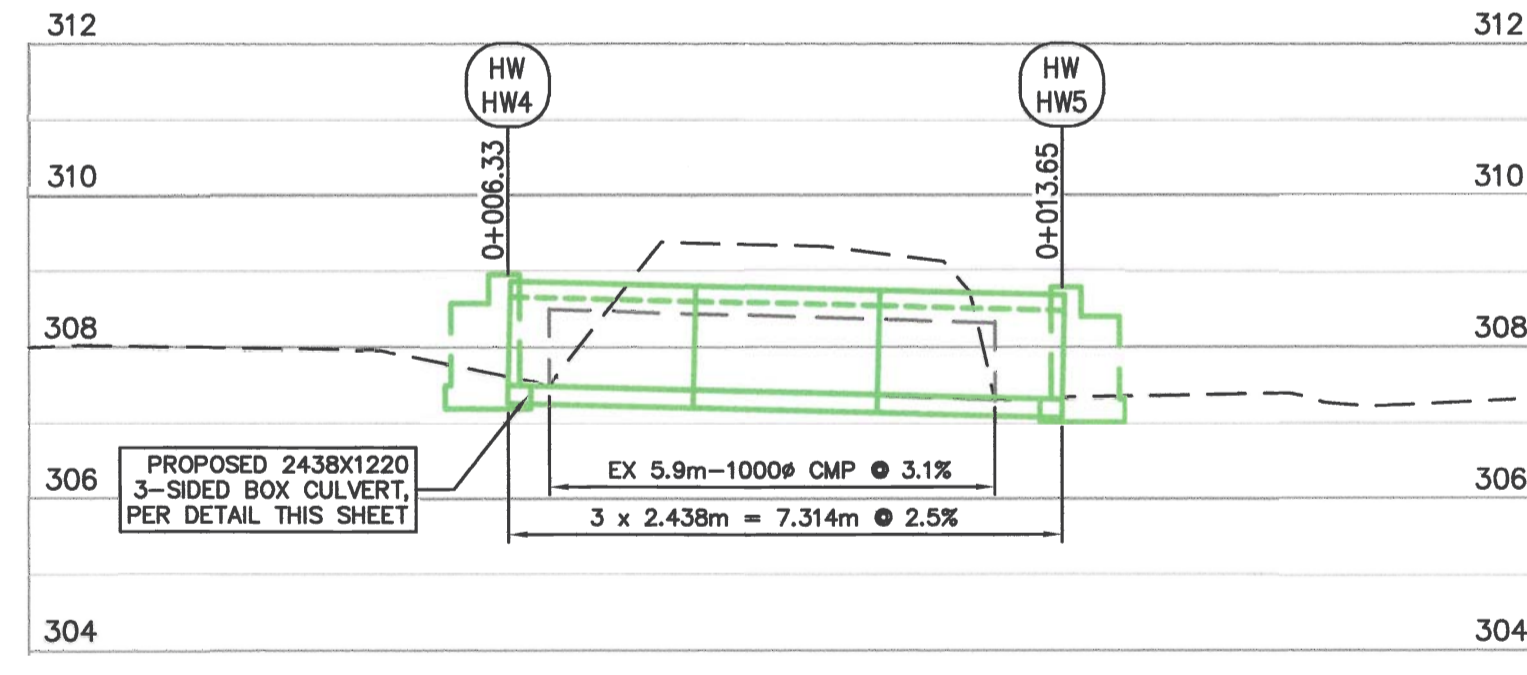
PLAN VIEW



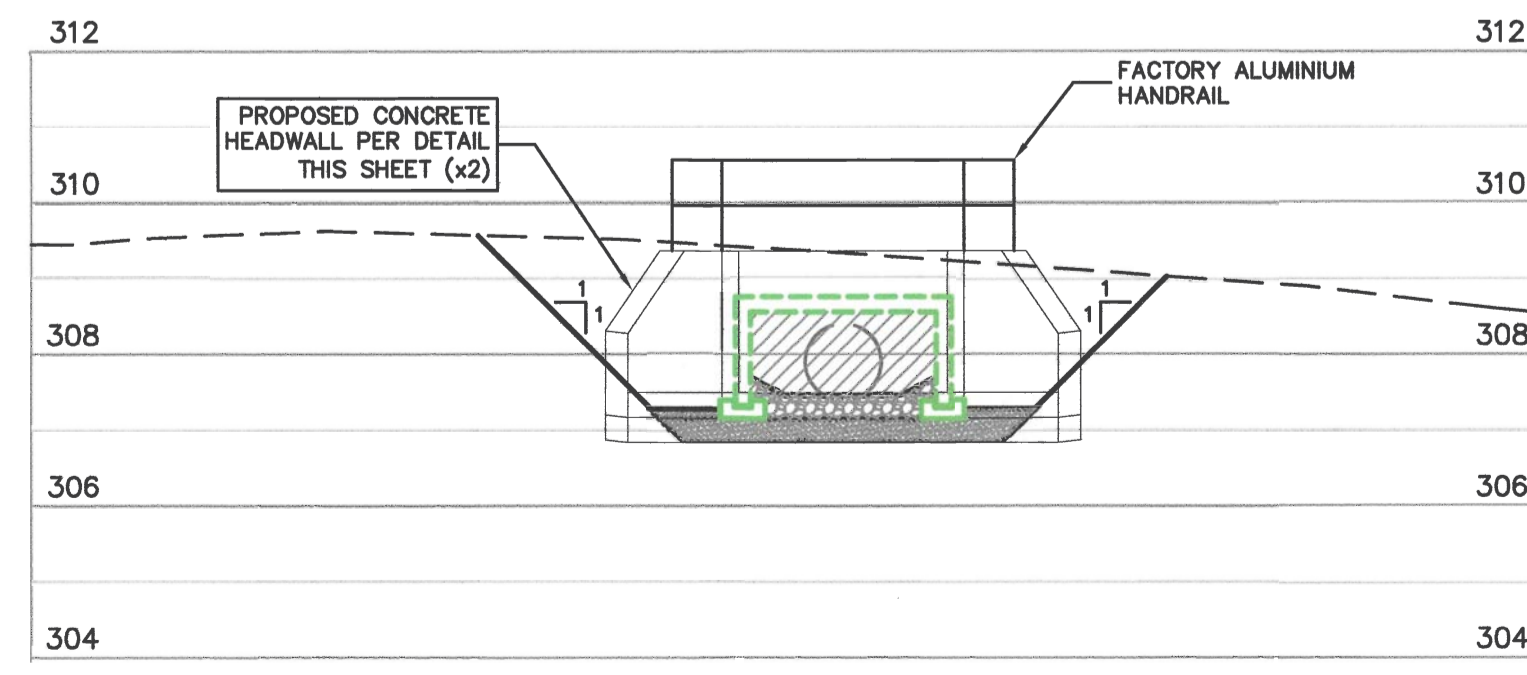
ELEVATION VIEW

SECTION A-A

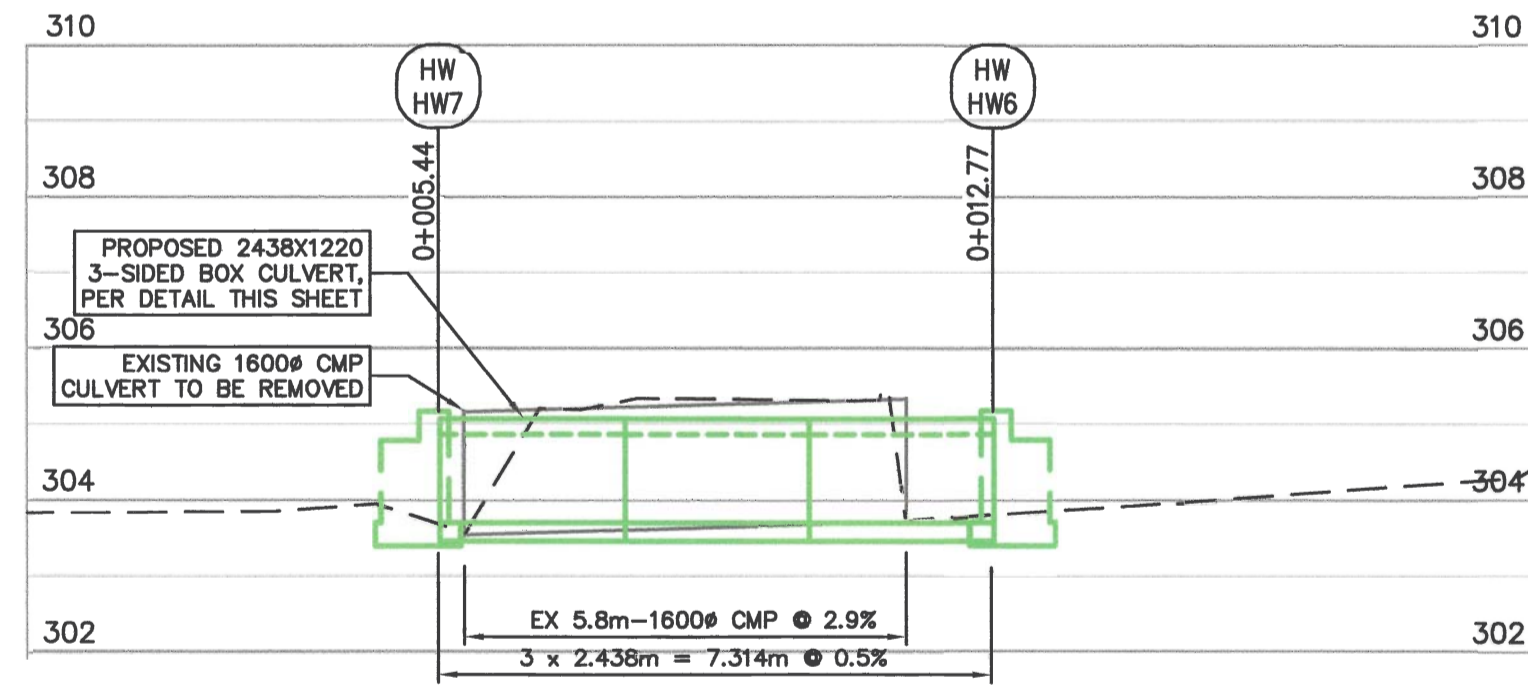
PRECAST 3-SIDED BOX CULVERT HEADWALL DETAIL
 NTS



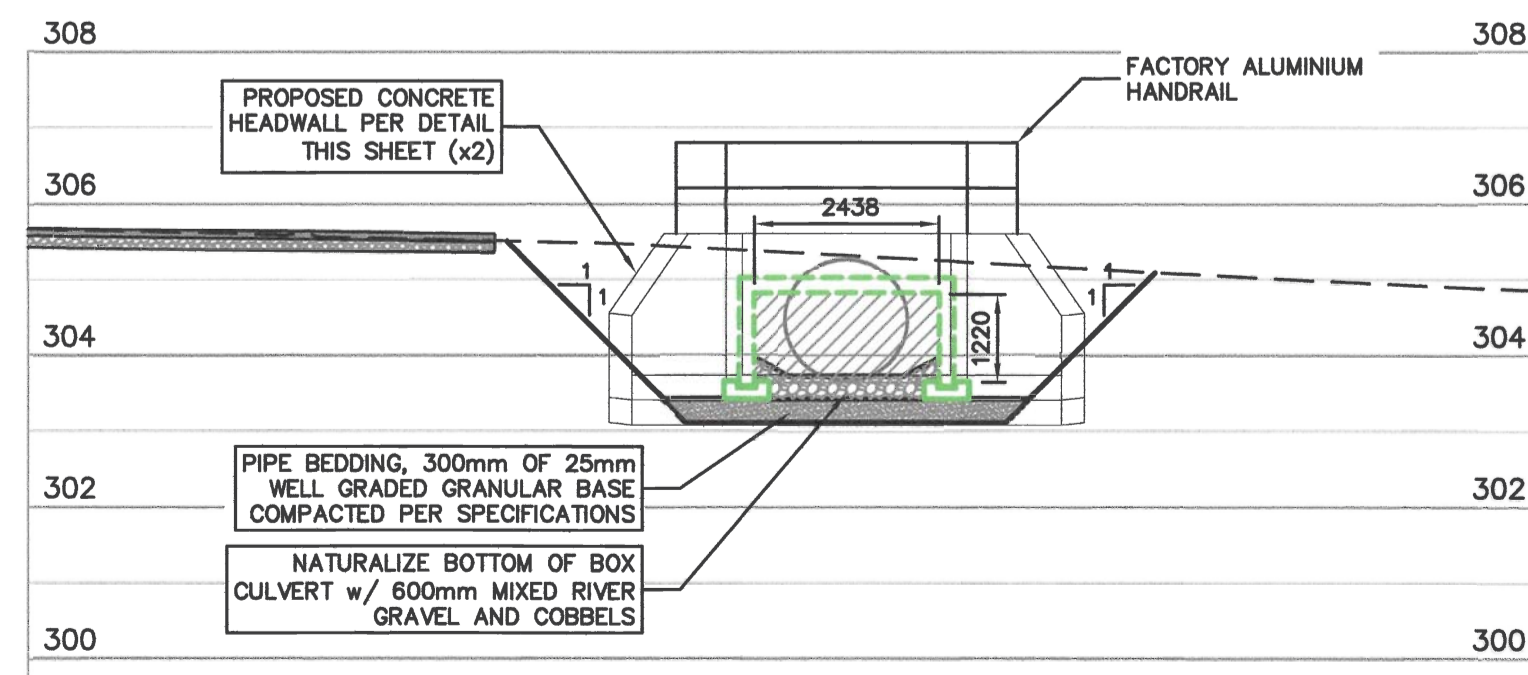
SNOW RESEARCH STATION ACCESS ROAD CULVERT PROFILE
 1:100 H 1:100 V



SNOW RESEARCH STATION ACCESS ROAD CULVERT SECTION
 1:100 H 1:100 V



SEWAGE LAGOON ACCESS ROAD CULVERT PROFILE
 1:100 H 1:100 V



SEWAGE LAGOON ACCESS ROAD CULVERT SECTION
 1:100 H 1:100 V

Revision/Revisions	Description/Description	Date/Date
4	REVISED; ISSUED FOR ADDENDUM #1	2017/09/11
3	ISSUED FOR CONSTRUCTION COSTING	2017/01/30
2	68% COMPLETE - ISSUED FOR REVIEW	2016/12/14
1	33% COMPLETE - ISSUED FOR REVIEW	2016/08/19

PUBLIC WORKS AND GOVERNMENT SERVICES CANADA

PARKS CANADA - ROGERS PASS MAINTENANCE COMPOUND INFRASTRUCTURE IMPROVEMENTS PHASE 2

Consultant Signature Only
WEDLER ENGINEERING LLP
 Designed by/Concept par **SBR**
 Drawn by/Dessiné par **DBB**
 PWSC Project Manager/Administrateur de Projets TPSGC
TOM DUNPHY
 Regional Manager, Architectural and Engineering Services
 Gestionnaire régionale, Services d'architectural et de génie, TPSGC

STORMWATER DETENTION TYPICAL DETAILS AND ADDITIONAL PAVING AREAS

Project No./No. du projet R.076550.001	Sheet/Feuille C25	Revision no./La Révision no. 4
--	-----------------------------	--

N:\15\0218C - Parks Canada - Rogers Pass Storm Improvements.dwg - 2017/5/2 10:31:35 AM bbarrow
 2017 - WEDLER ENGINEERING LLP - ALL RIGHTS RESERVED - THIS DOCUMENT IS PROTECTED BY COPYRIGHT LAW AND MAY NOT BE REPRODUCED IN ANY MANNER, OR FOR ANY PURPOSE, EXCEPT BY WRITTEN PERMISSION OF COPYRIGHT HOLDER.

