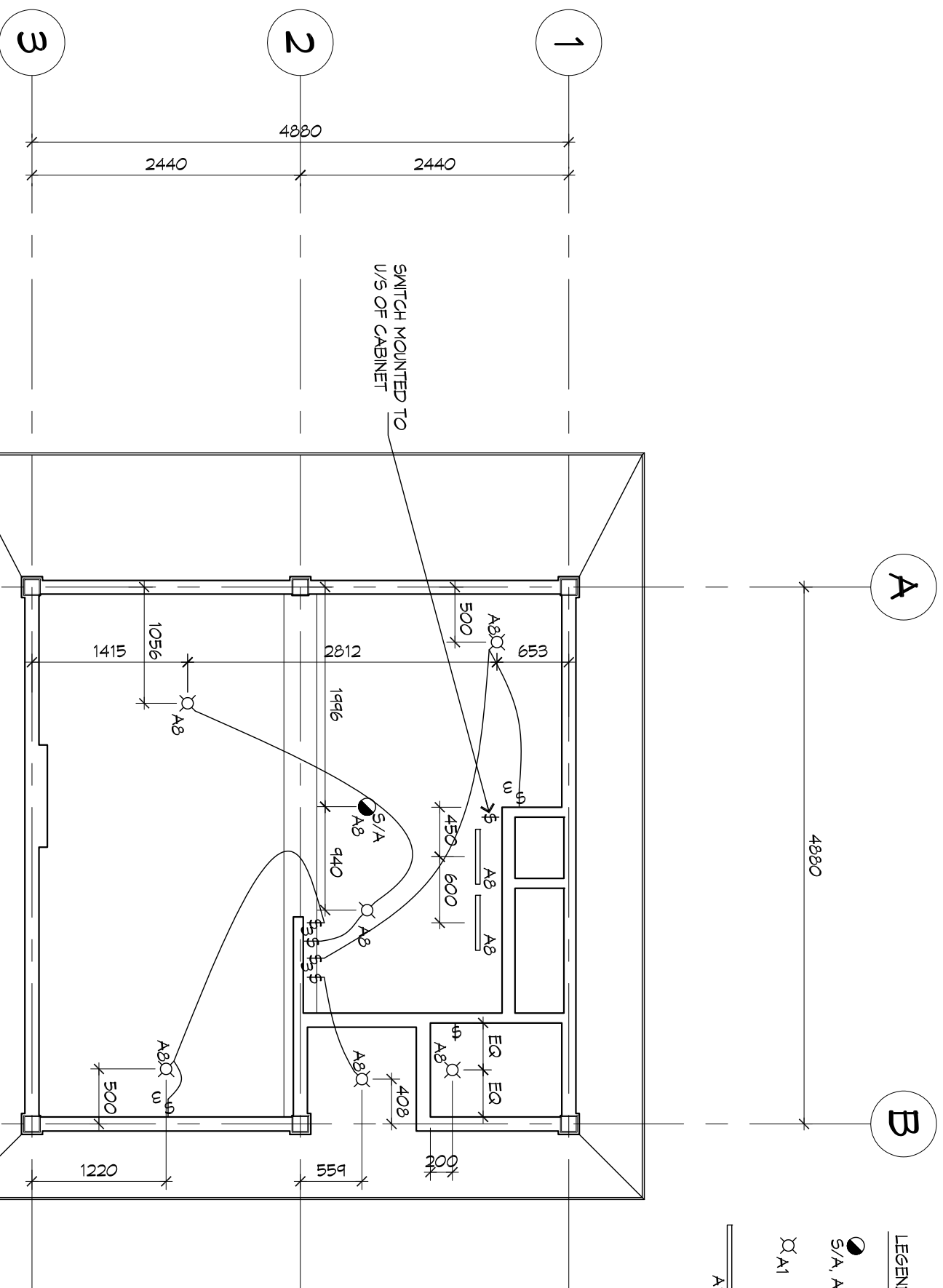


LEGEND OF SYMBOLS


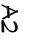

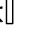
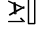
- ⊙_{A1} DIRECT CONNECTION (WITH CIRCUIT NUMBER)
- ⊕_{A1} DUPLEX OUTLET (WITH CIRCUIT NUMBER)
- GFI GROUND FAULT INTERCEPT
- a ABOVE COUNTER
- ⊠_M MALE CONNECTION
- ⊕_F UNDER-COUNTER FRIDGE RECEPTACLE

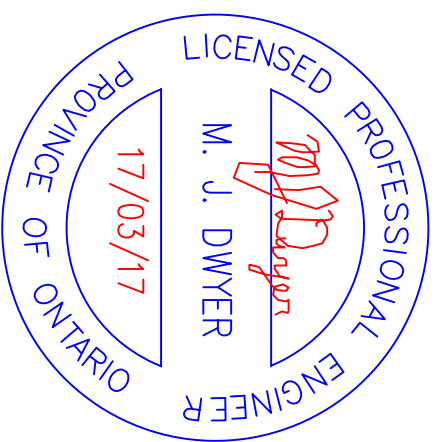


A

B

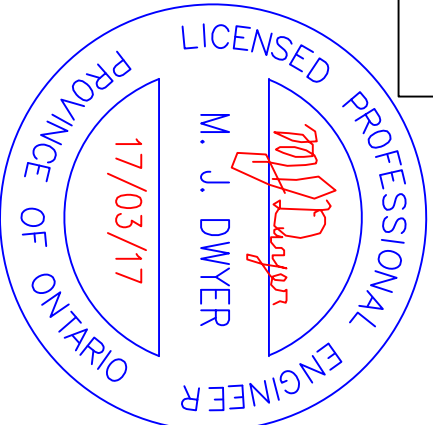
LEGEND OF SYMBOLS

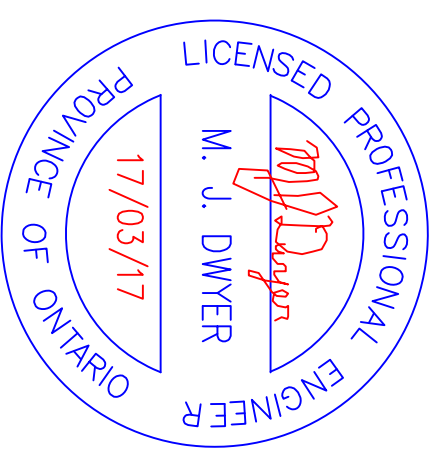
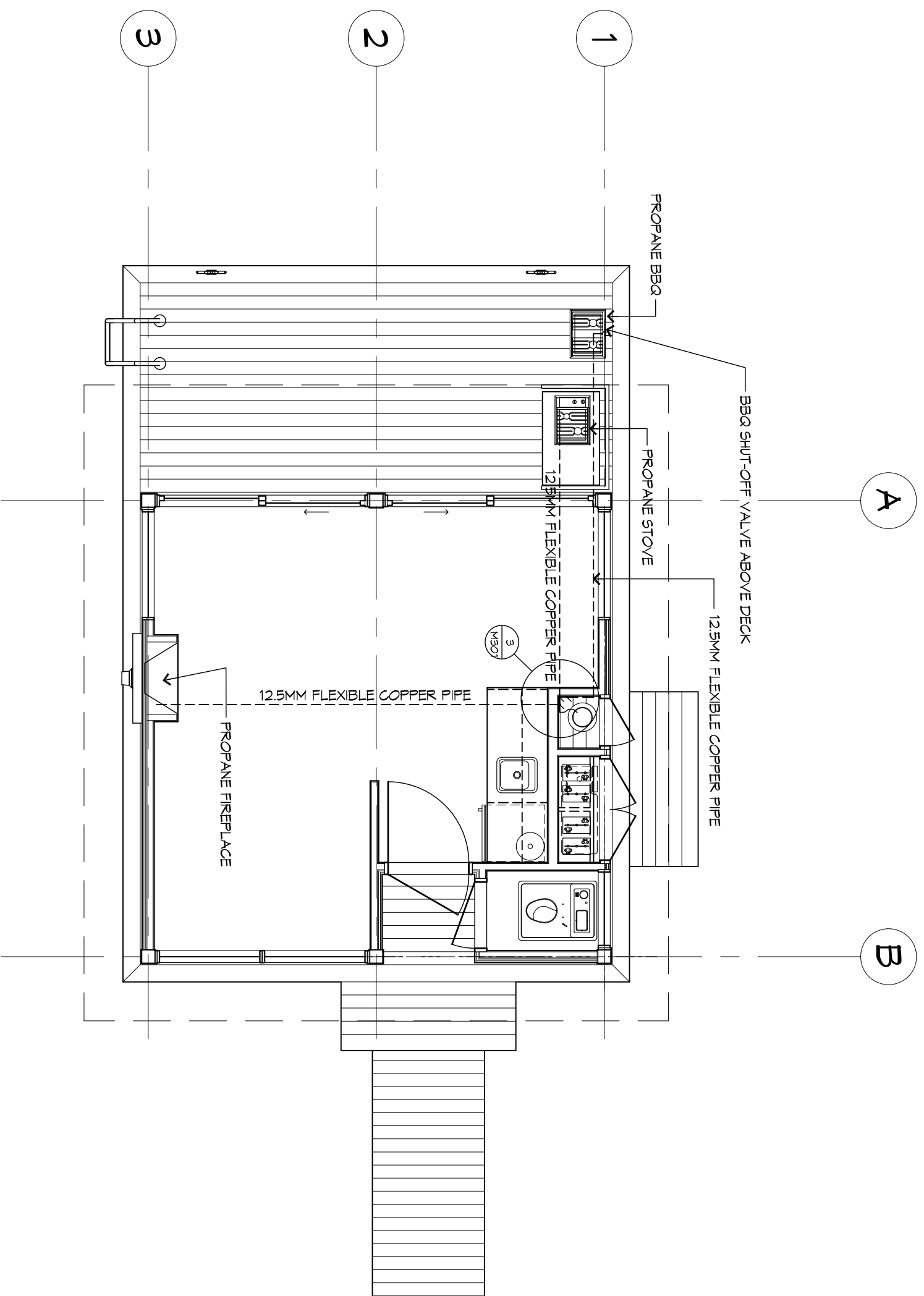
-  SMOKE ALARM (WITH CIRCUIT BREAKER NO.)
-  S/A, A2
-  POTLIGHT, SUN3C-HD14-RD-WM-SA WITH SUN3-HS HOUSING, AND CIRCUIT BREAKER NUMBER
-  EQ, A1
-  STRIP LIGHT, LED, RA8 UC-LED500-WM, C/M UC 40M HARDWARE KIT AND ON/OFF SWITCH (WITH CIRCUIT BREAKER NO.)

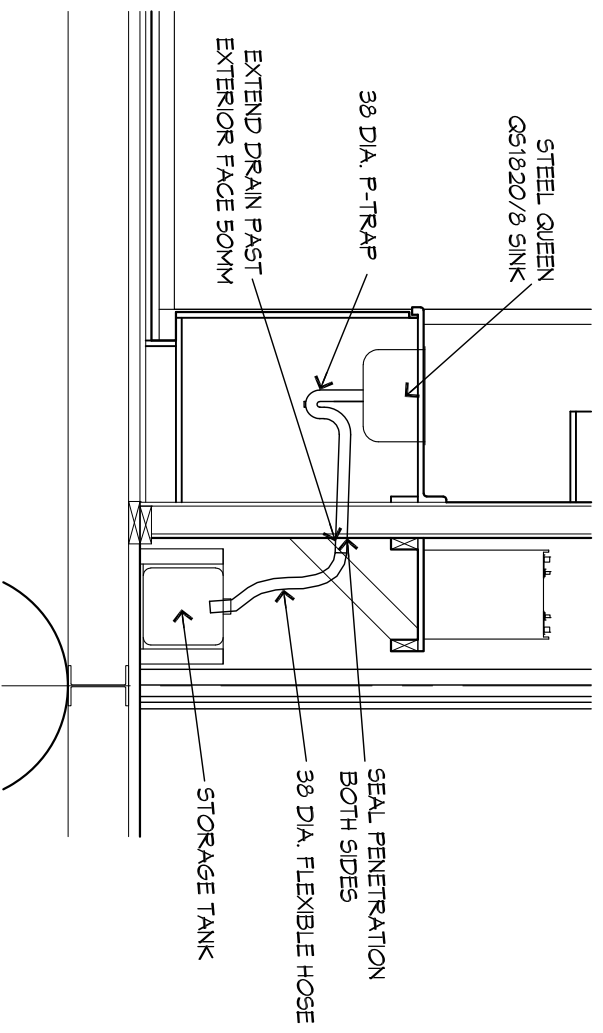


LOAD DESCRIPTION	LOAD	BRKR	CCT No.	PH	CCT No.	BRKR	LOAD	LOAD DESCRIPTION
MALE CONNECTOR	4KW	30A	1	A	2	30A	4KW	SOLAR INVERTER
		2P	3	B	4	2P		
FRIDGE	100	15A	5	A	6	15A	100	FIREPLACE
COMPOSTING TOILET	100	15A	7	B	8	15A	100	LIGHTS AND PLUGS
SPARE	100	15A	9	A	10	15A		SPACE
SPACE		15A	11	B	12	15A		SPACE
			13	A	14			
			15	B	16			
			17	A	18			
			19	B	20			
			21	A	22			
			23	B	24			
PANEL: 'A'		VOLTS: 120/240 VOLT		TYPE: STABLOK		<input checked="" type="checkbox"/> FLUSH <input type="checkbox"/> SURFACE <input type="checkbox"/> SPRINKLERPROOF <input type="checkbox"/> FEED THRU LUGS <input checked="" type="checkbox"/> MAIN BRKR 2x30A		
NOTES: ALL BRANCH WIRING SHALL BE 2 OR 3 CONDUCTOR #12 AC90 UNLESS OTHERWISE INDICATED.		PHASE: 1		LOAD(KW): 0.60				
NOTE: MIN. 12 CCT PANEL		WIRE: 3		LOAD(AMPS): 2.5				
		MAINS: min. 30A		LOCATION: MAIN RM				
		I.C.(KA): 10 KAIC		FED FROM: MC/INVERTER				

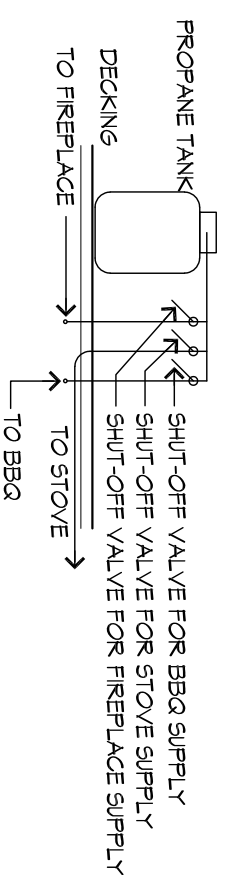
PANEL LAYOUT



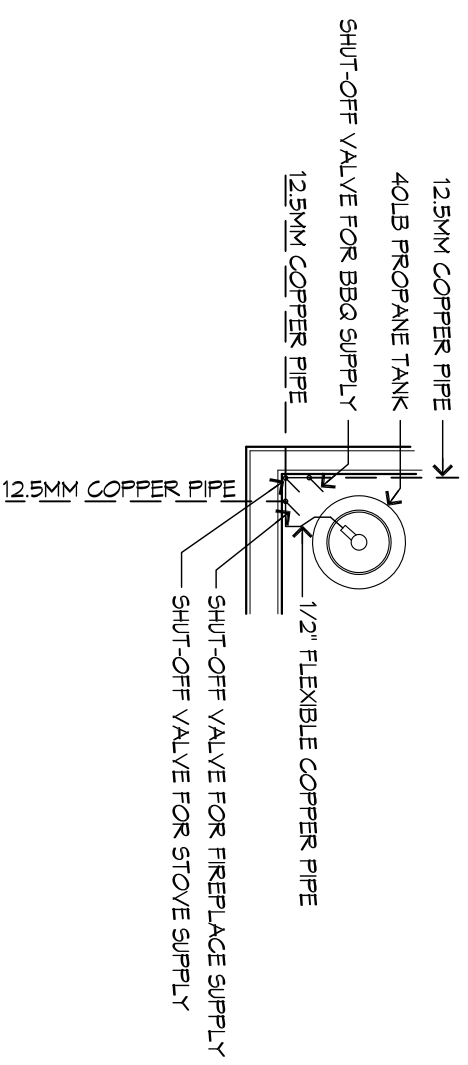




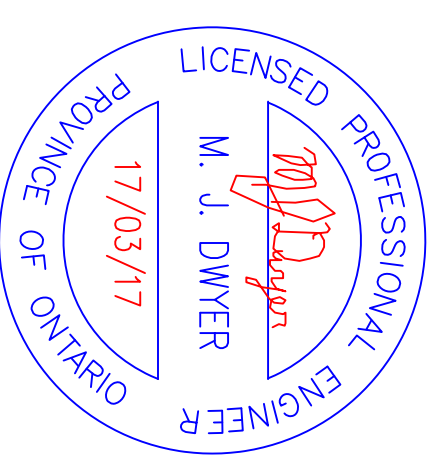
1 SINK DETAIL
M301



2 VALVE ELEVATION
M301



3 VALVE PLAN
M301



ISSUED FOR TENDER: 03/17/17