

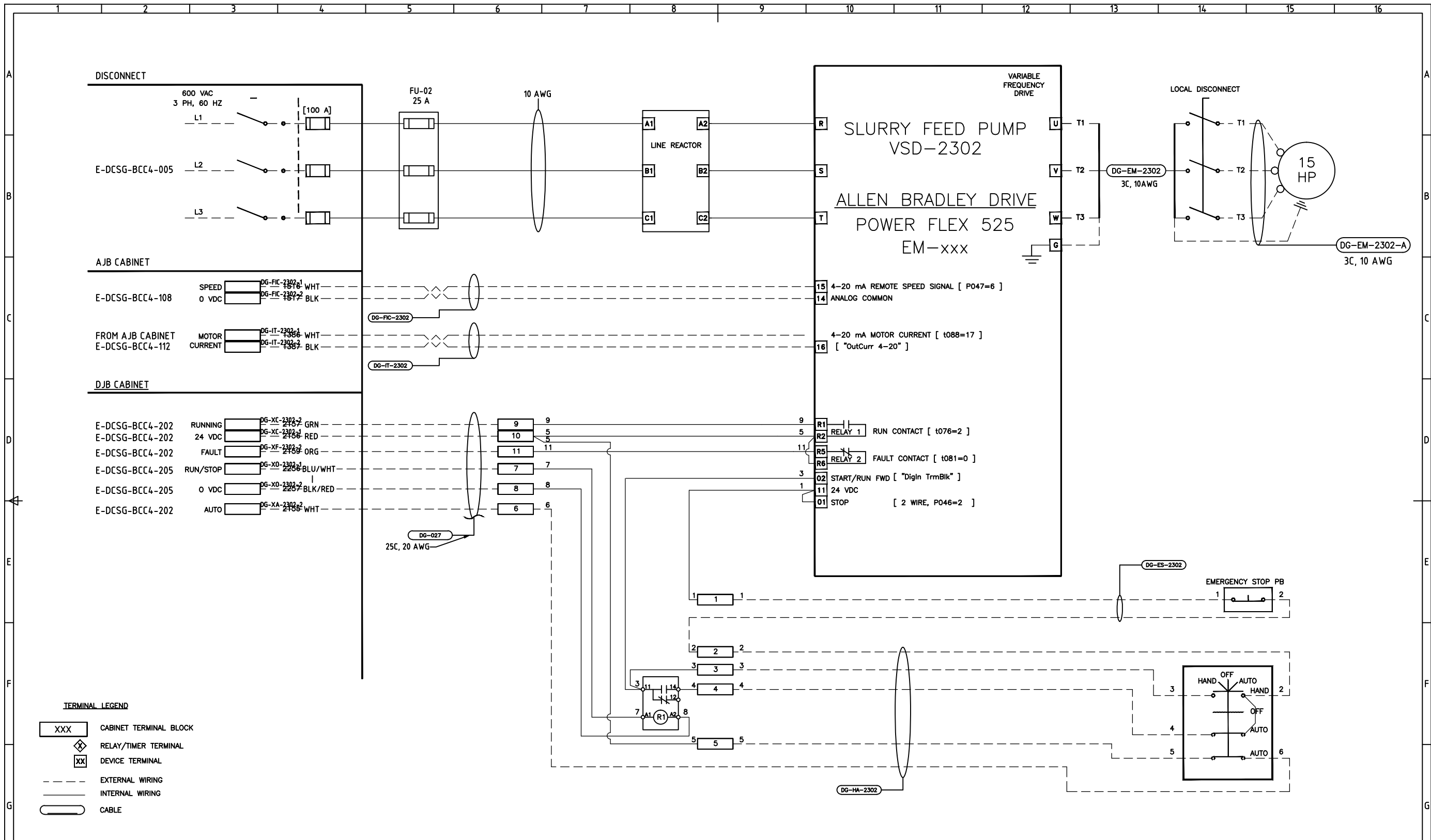
ITEM	QTY	MFR	DESCRIPTION	PART NO.
1	1	RITTAL	ENCLOSURE, 997mm X 1805mm X 405mm (W X H X D), SINGLE DOOR C/W REAR DETACHABLE PANEL, MOUNT PLATE	8084.500
2	1	RITTAL	TS SIDE PANELS, 1800 X 400mm, PACKAGE OF 2	8184.235
3	1	RITTAL	FLEX-BLOCK CORNER PIECES BASE/PUNTH SYSTEM, FIBREGLASS-REINFORCED PLASTIC	8200.000
4	1	RITTAL	FLEX-BLOCK TRIM PANELS, FOR 1000mm X 200mm (D X H), SOLID	8200.010
5	1	RITTAL	FLEX-BLOCK TRIM PANELS, FOR 400mm X 200mm (D X H), SOLID	8200.400
6	1	RITTAL	"SHEET STEEL WIRING PLAN POCKETS, 855mm X 210mm (W X H), 90mm DEEP"	4124.000
7	1	RITTAL	GROUND BUS, COPPER, 20 GROUNDING CLIPS, 2 ISOLATORS	7113.000
8				
9	1	BY NRCAN	LAMACOID LABEL, 250mm X 150mm (W X H), ENGRAVED WITH 15mm HIGH TEXT AS INDICATED, BLACK LETTERING ON WHITE	
10	2	ALLEN BRADLEY	POWERFLEX 525, 600V, 3 PH, 20 HP VARIABLE SPEED DRIVE, NORMAL DUTY; HEAVY DUTY, FRAME D, IP20 NEMA / OPEN TYPE, NO FILTE	25B-E022N104
11	3	ALLEN BRADLEY	LINE REACTORS FOR ITEMS 10 & 16, OPEN STYLE, 25 AMPS, 1.2 MH	1321-3R25-B
12	2	ALLEN BRADLEY	POWERFLEX 525, 600V, 3 PH, 5 HP VARIABLE SPEED DRIVE	25B-E6P6N104
13	1	ALLEN BRADLEY	1497B - CCT, 100VA, 600/575/550V 60Hz Primary, 0 Primary - 0 Secondary Fuse Blocks	1497B-A3-M11-0-N
14	1	ALLEN BRADLEY	POWERFLEX 525, 600V, 3 PH, 10 HP VARIABLE SPEED DRIVE	25B-E012N104
15	3	ALLEN BRADLEY	LINE REACTORS FOR ITEM 14, OPEN STYLE, 12 AMPS, 2.5 MH	1321-3R12-B
16	1	ALLEN BRADLEY	POWERFLEX 525, 600V, 3 PH, 15 HP VARIABLE SPEED DRIVE	25B-E019N104
17	1	AUTOMATION DIRECT	AC current transducer, 0-10, 0-20, or 0-50A selectable input ranges, 4-20mA output.	ACTR050-42L-F
18	1	FUJII	SC-E CONTACTOR, FULL-VOLTAGE, NON-REVERSING MOTOR STARTER, SIZE 00, 7.5HP @ 600VAC	SC-E03G-24VDC
19	2	FUJII	SC-E CONTACTOR, FULL-VOLTAGE, NON-REVERSING MOTOR STARTER, SIZE 00, 5HP @ 600VAC	SC-E02G-24VDC
20	2	FUJII	TK-E OVERLOAD RELAY, 0.95-1.45A ADJUSTED RANGE	TK-E02-145
21	1	FUJII	TK-E OVERLOAD RELAY, 9-13A ADJUSTED RANGE	TK-E02-1300
22	3	FUJII	AUXILIARY CONTACT FOR SC-E CONTACTOR	SZ-AS1T
23	12	BUSSMANN	CH SERIES MODULAR FUSE HOLDER, CHM 10X38 AND MIDGET, 600V/30A, 3-POLE, 18-4 AWG	CHM3DU
24	2	BUSSMANN	CH SERIES MODULAR FUSE HOLDER, CH CLASS J, 600V/60A, 3-POLE, 1-18 AWG	CH60J3
25	1	BUSSMANN	COM-BUS BAR, 3PH, 600V CUTTABLE 100A, 57 PINS, WITHOUT ENDCAP (19) 3PH HOLDERS	883P100M57
26	2	BUSSMANN	3 PHASE BUSBAR ENDCAP	ECAPMP
27	6	BUSSMANN	35sq-mm, FEEDER TERMINAL FOR 3PH BUSBAR (115A, 1000VAC/DC)	PWR35MM
28	18	BUSSMANN	SPARE CONTACT SAFETY PROTECTION COVER	FSCVR
29	1	BUSSMANN	CH SERIES MODULAR FUSE HOLDER, CHM 10X38 AND MIDGET, 600V/30A, 2-POLE, 18-4	CHM2DU
30	6	BUSSMANN	13/32" X 1-1/2" 600VAC FAST-ACTING SUPPLEMENTAL FUSES, 5A	KLM-5
31	2	BUSSMANN	13/32" X 1-1/2" 600VAC FAST-ACTING SUPPLEMENTAL FUSES, 0.5A	KLM-1/2
32	12	BUSSMANN	13/32" X 1-1/2" 600VAC FAST-ACTING SUPPLEMENTAL FUSES, 12A	KLM-12
33	6	BUSSMANN	13/32" X 1-1/2" 600VAC FAST-ACTING SUPPLEMENTAL FUSES, 15A	KLM-15
34	6	BUSSMANN	13/32" X 1-1/2" 600VAC FAST-ACTING SUPPLEMENTAL FUSES, 20A	KLM-20
35	3	BUSSMANN	13/32" X 1-1/2" 600VAC FAST-ACTING SUPPLEMENTAL FUSES, 25A	KLM-25
36				
37	*6	BUSSMANN	JDL, CLASS J 600VAC, 35A, DUAL-ELEMENT, TIME DELAY FUSE	JDL35
38				
39	12	WEIDMULLER	RELAY, SPDT/6A, LED, 24VDC COIL, SCREW CLAMP, DIN MOUNT	8533640000
40	2	WEIDMULLER	CROSS-CONNECTION, 10-POLE, BLACK, "SPDT RELAY"	1794060000

ITEM	QTY	MFR	DESCRIPTION	PART NO.	ITEM	QTY	MFR	DESCRIPTION	PART NO.
54		ENTRELEC	TERMINAL BLOCK BLANK MARKING TAGS, 6m SPACING, 10X10 PER CARD, VERTICAL PRINTED NUMBER RANGE (SEE ATTACHMENT FOR CUSTOM LABELS)	233 000.01	41	1	WEIDMULLER	BLANK MARKING TAGS, 12 x 6 mm WS 10/6, 120 PER CARD	1060960000
55					42				
56		IBICO	WIRE DUCT, 4.0 x 4.0 IN., 4/PK, GRY, SLOTTED, 2M, WITH COVER	T1-4040G	43	100	ENTRELEC	STANDARD TERMINAL BLOCK, M 4/6, WITH TEST 2mm TEST SOCKET	115 217.14
57	1.2m	IBICO	WIRE DUCT, 3.0 x 4.0 IN., 4/PK, GRY, SLOTTED, 2M, WITH COVER	T1-3040G	44	1	ENTRELEC	FUSED TERMINAL BLOCKM4/8.SF	115 657.25
58	2.0m	IBICO	WIRE DUCT, 2.25 x 4.0 IN., 4/PK, GRY, SLOTTED, 2M, WITH COVER	T1-2240G	45		ENTRELEC	TERMINAL BLOCKS, M 6/8	115 118.11
59		IBICO	WIRE DUCT, 1.5 x 4.0 IN., 4/PK, GRY, SLOTTED, 2M, WITH COVER	T1-1540G	46	2	ENTRELEC	END SECTION, M4/6	118 368.16
60	2.3m	IBICO	WIRE DUCT, 1.0 x 4.0 IN., 8/PK, GRY, SLOTTED, 2M, WITH COVER	T1-1040G	47		ENTRELEC	END SECTION, M4/8.SF	116 951.15
61	1	RITTAL	SK FILTER FAN, RAL 7035 115 V,	3323.117	48	10	ENTRELEC	END STOP (ALL RAILS)	206 351.16
62	1	RITTAL	SK OUTLET FILTER RAL 7035,	3323.207	49		ENTRELEC	SEPARATOR END SECTION, RAIL MOUNT, SCF6	118 707.03
					50	3.7m	ENTRELEC	ASSEMBLY RAIL, PR30 (TS 35/F6), DIN 3, 35mm, 2 meter	173 220.05
					51	7	ENTRELEC	RAIL OFFSET MTG BRACKET, TS0441-SM6 40mm HIGH	101 655.06
					52	4	ENTRELEC	RAIL OFFSET MTG BRACKET, TS0441-SM6 20mm HIGH	101 653.04
					53	26	ENTRELEC	SM6 MTG BRACKET SCREWS	101 659.12

NO	REVISION DESCRIPTION	DATE (Y/M/D)	DRAWN	CKD	APPD
1	ISSUE FOR TENDER	2017/03/24	RCM		
0	ISSUE FOR CLIENT REVIEW	2016/12/14	RCM		
No	REVISION DESCRIPTION	DATE (Y/M/D)	DRAWN	CKD	APPD

DESIGNED  
R. McNAIR  
DRAWN  
R. McNAIR  
CHECKED  
APPROVED  
DATE  
2016/11/11  
SCALE  
NONE

PROJECT NRCAN CANMET DCSG/HIPROX				
TITLE ELECTRICAL DCSG-HIPROX VSD CABINET ASSEMBLY				
USER	PROJECT	BUILDING	DRAWING	REV.
E	DCSG	BCC4	500	1



500	VSD CABINET ASSEMBLY								
205	DIGITAL OUTPUT WIRING NODE 4 MODULE 5								
202	DIGITAL INPUT WIRING NODE 4 MODULE 2								
112	ANALOG INPUT WIRING NODE 2 MODULE 5	1	ISSUE FOR TENDER	2017/03/24	RCM				
108	ANALOG OUTPUT WIRING NODE 1 MODULE 11	0	ISSUE FOR CLIENT REVIEW	2016/12/14	RCM				
011	VSD POWER DIST SINGLE LINE DIAGRAM	No							
REFERENCE DRAWINGS		REVISION REGISTER							

excellence by design  
www.miron.com

Natural Resources Canada  
CANMET Energy Technology Center

DESIGNED  
**R. McNAIR**

DRAWN  
**R. McNAIR**

CHECKED

APPROVED

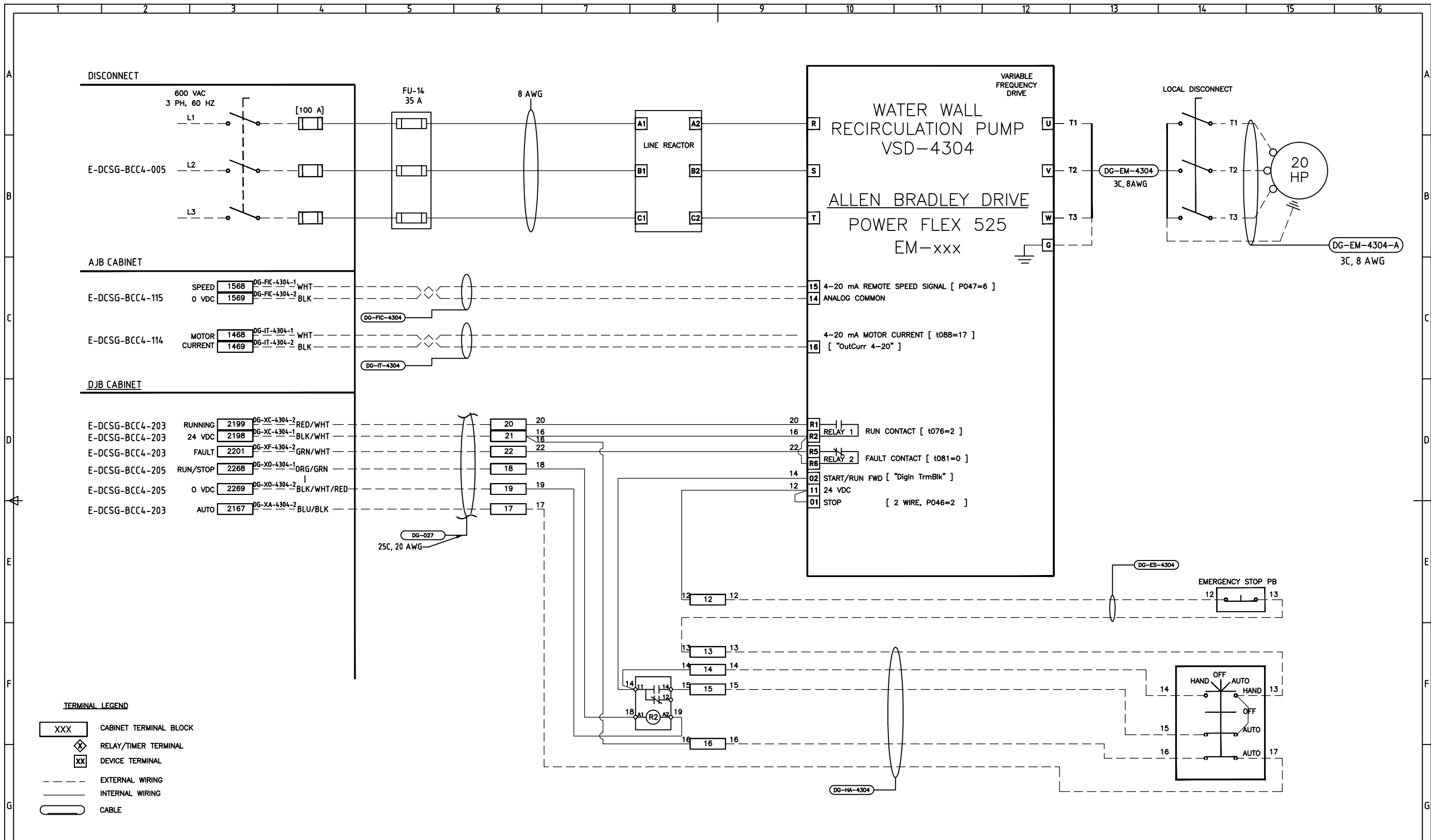
DATE  
2016/11/11

SCALE  
NONE

PROJECT  
NRCAN CANMET DCSG/HIPROX

TITLE  
ELECTRICAL  
DCSG-HIPROX  
VSD CABINET PF525 WIRING  
M-2302 HP SLURRY FEED PUMP

USER	PROJECT	BUILDING	DRAWING	REV.
E	DCSG	BCC4	501	1

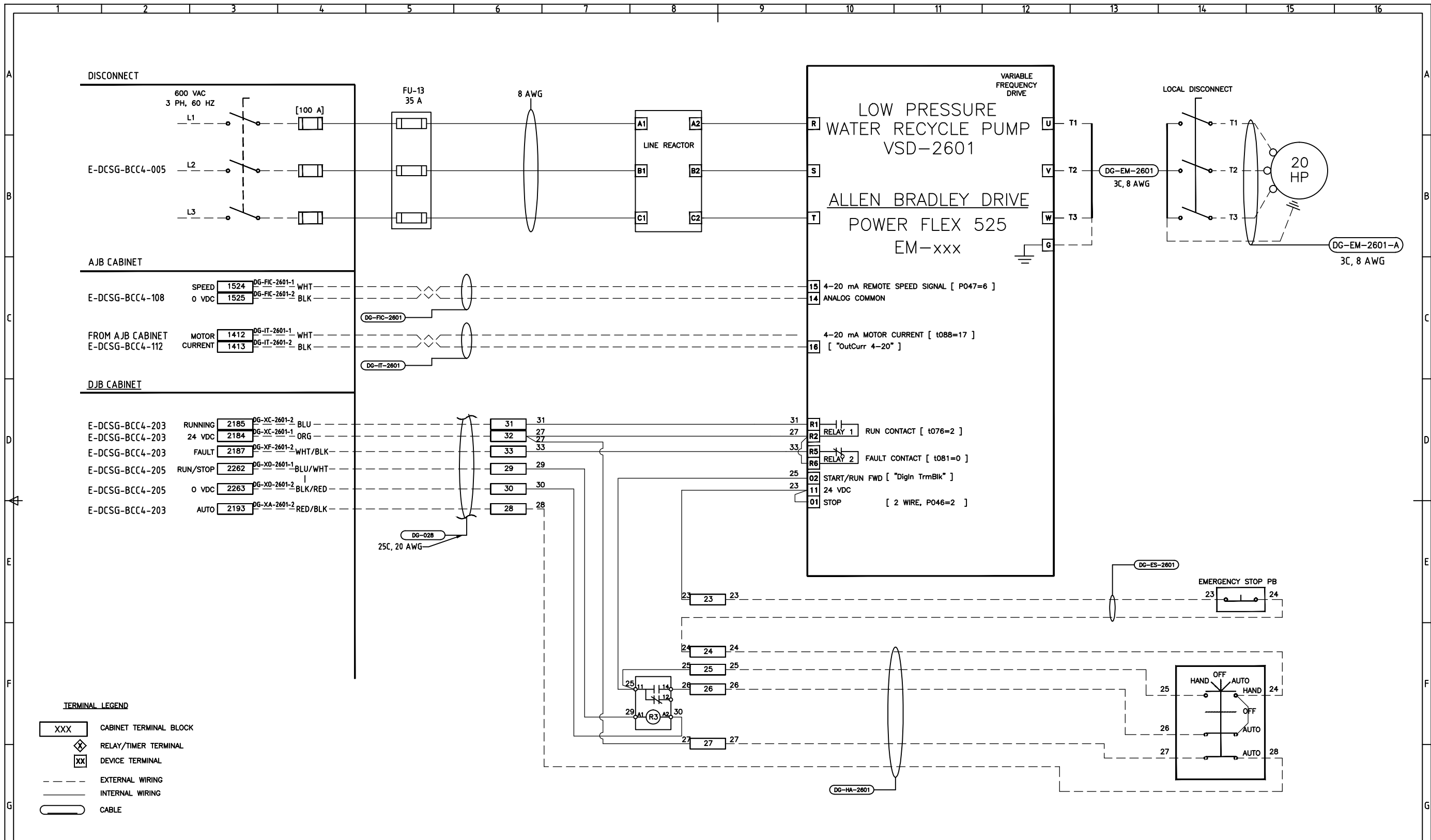


**TERMINAL LEGEND**

XXX	CABINET TERMINAL BLOCK
⊠	RELAY/TIMER TERMINAL
XX	DEVICE TERMINAL
---	EXTERNAL WIRING
—	INTERNAL WIRING
—	CABLE

500	VSD CABINET ASSEMBLY							
205	DIGITAL OUTPUT WIRING NODE 4 MODULE 5							
203	DIGITAL INPUT WIRING NODE 4 MODULE 3							
115	ANALOG OUTPUT WIRING NODE 2 MODULE 11	1	ISSUE FOR TENDER	2017/03/24	RCM			
114	ANALOG OUTPUT WIRING NODE 2 MODULE 9	0	ISSUE FOR CLIENT REVIEW	2017/01/27	RCM			
011	VSD POWER DIST SINGLE LINE DIAGRAM	No						
REFERENCE DRAWINGS			REVISION REGISTER					
			REVISION DESCRIPTION	DATE (Y/M/D)	DRAWN	CKD	APPD	

 excellence by design www.miriton.com		DESIGNED R. McNAIR	PROJECT NRCAN CANMET DCSG/HIPROX		
		DRAWN R. McNAIR	TITLE ELECTRICAL DCSG-HIPROX VSD CABINET PF525 WIRING M4304 HP WATER WALL RECIRC PUMP		
 Natural Resources Canada Ressources naturelles Canada CANMET Energy Technology Center Centre de la technologie de l'énergie de CANMET		CHECKED	USER		
		APPROVED	PROJECT		
CLIENT		DATE 2016/11/11	BUILDING	DRAWING	REV.
		SCALE NONE	E	DCSG BCC4	502 1

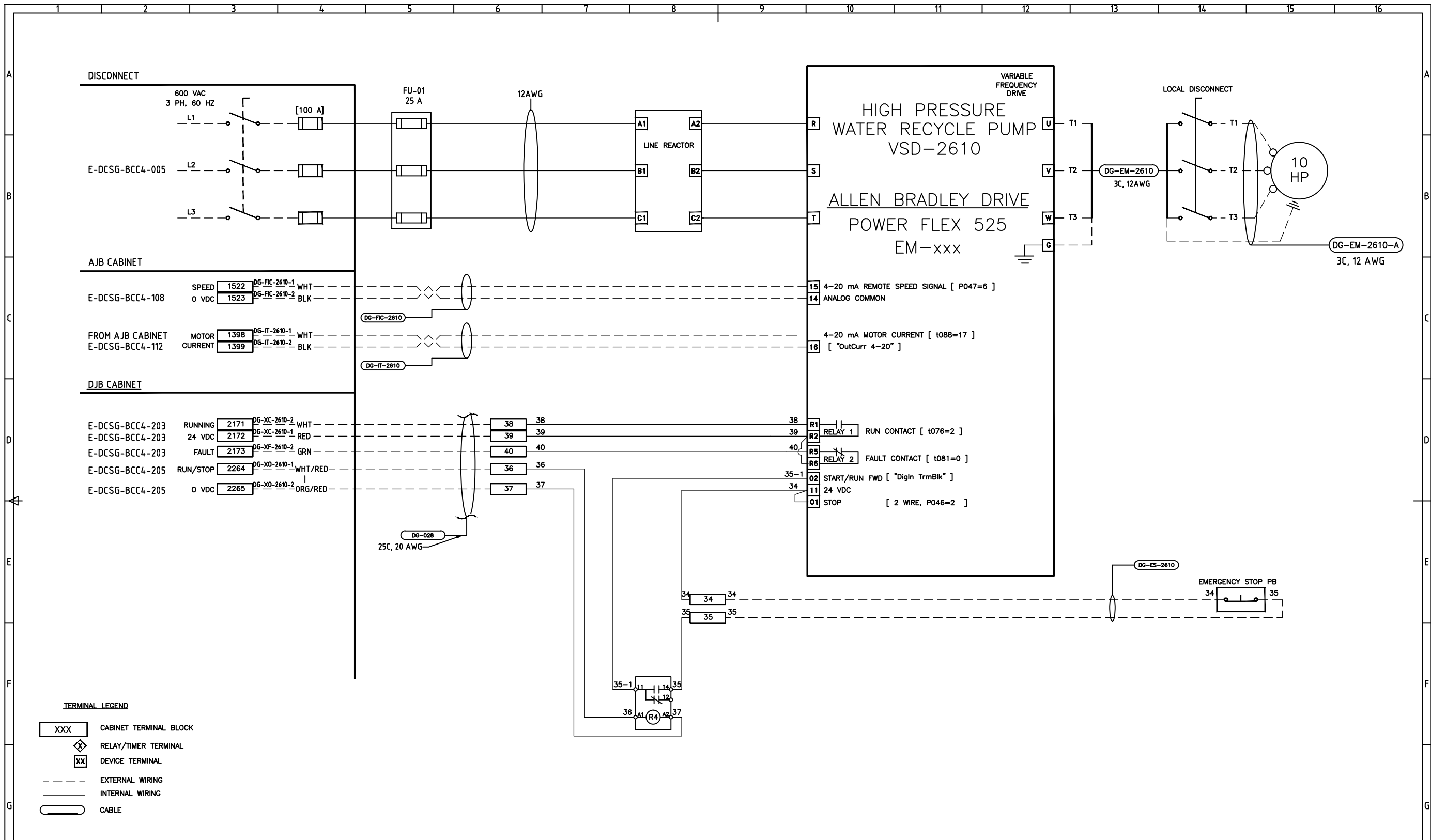


**TERMINAL LEGEND**


XXX	CABINET TERMINAL BLOCK
⊠	RELAY/TIMER TERMINAL
xx	DEVICE TERMINAL
---	EXTERNAL WIRING
—	INTERNAL WIRING
—	CABLE

500	VSD CABINET ASSEMBLY							
205	DIGITAL OUTPUT WIRING NODE 4 MODULE 5							
203	DIGITAL INPUT WIRING NODE 4 MODULE 3							
112	ANALOG INPUT WIRING NODE 2 MODULE 6	1	ISSUE FOR TENDER	2017/03/24	RCM			
108	ANALOG OUTPUT WIRING NODE 1 MODULE 11	0	ISSUE FOR CLIENT REVIEW	2017/01/27	RCM			
011	VSD POWER DIST SINGLE LINE DIAGRAM	No						
REFERENCE DRAWINGS			REVISION REGISTER					
			REVISION DESCRIPTION	DATE (Y/M/D)	DRAWN	CKD	APPD	


 excellence by design www.miriton.com	DESIGNED	R. McNAIR	PROJECT				
	DRAWN	R. McNAIR	NRCAN CANMET DCSG/HIPROX				
 Natural Resources Canada Ressources naturelles Canada CANMET Energy Technology Center Centre de la technologie de l'énergie de CANMET	CHECKED		TITLE				
	APPROVED		ELECTRICAL DCSG-HIPROX				
	DATE	2016/11/11	VSD CABINET PF525 WIRING				
	SCALE	NONE	M-2601 LP WATER RECYCLE PUMP				
			USER	PROJECT	BUILDING	DRAWING	REV.
			E	DCSG	BCC4	503	1



500	VSD CABINET ASSEMBLY							
205	DIGITAL OUTPUT WIRING NODE 4 MODULE 5							
203	DIGITAL INPUT WIRING NODE 4 MODULE 3							
112	ANALOG INPUT WIRING NODE 2 MODULE 5	1	ISSUE FOR TENDER	2017/03/24	RCM			
108	ANALOG OUTPUT WIRING NODE 1 MODULE 11	0	ISSUE FOR CLIENT REVIEW	2017/01/27	RCM			
011	VSD POWER DIST SINGLE LINE DIAGRAM	No						
REFERENCE DRAWINGS		REVISION REGISTER						
			REVISION DESCRIPTION	DATE (Y/M/D)	DRAWN	CKD	APPD	



excellence by design  
www.miriton.com



Natural Resources Canada  
Ressources naturelles Canada  
CANMET Energy Technology Center  
Centre de la technologie de l'énergie de CANMET

DESIGNED  
R. McNAIR

DRAWN  
R. McNAIR

CHECKED

APPROVED

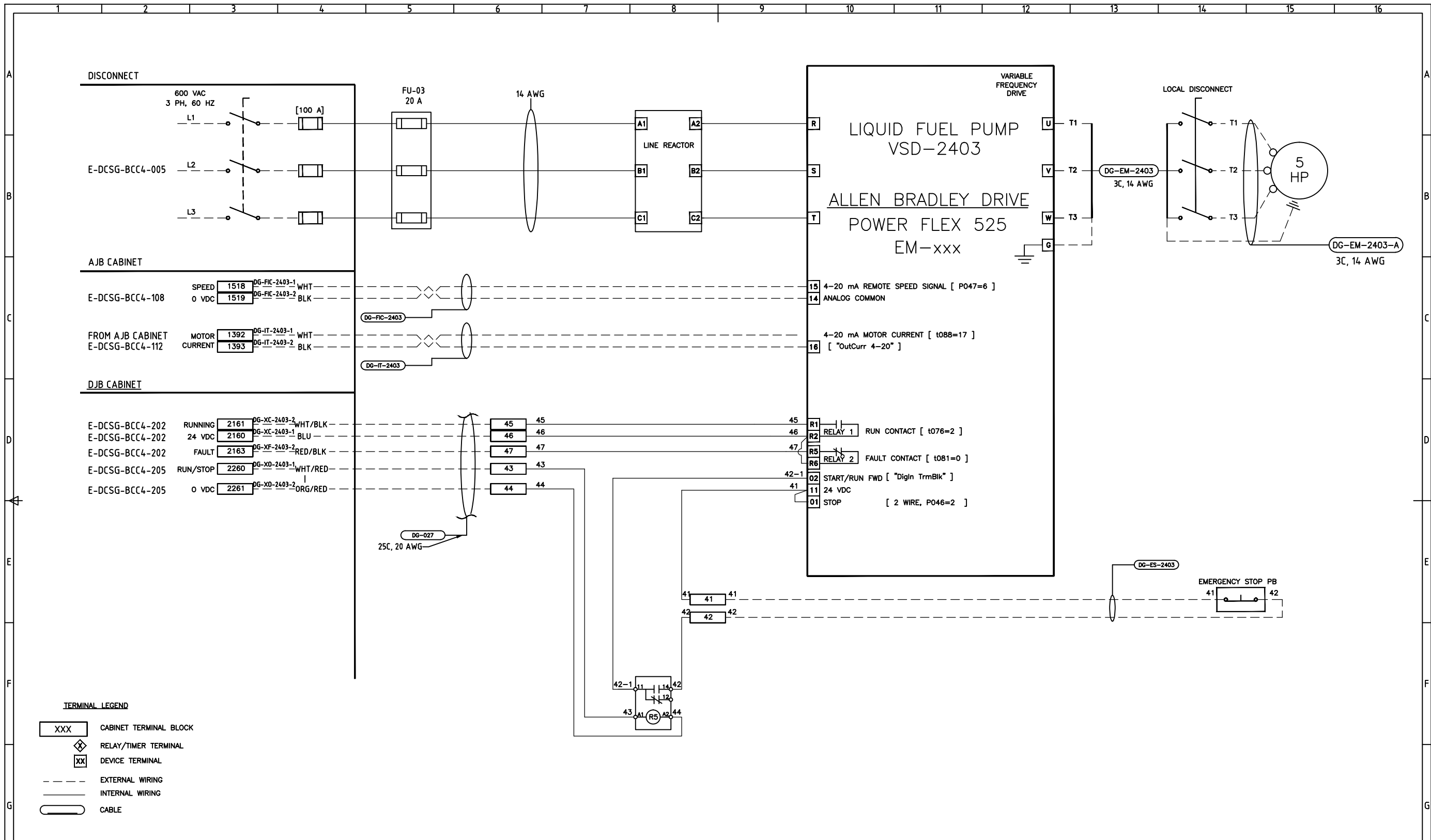
DATE  
2016/11/11

SCALE  
NONE


PROJECT  
NRCAN CANMET DCSG/HIPROX

TITLE  
ELECTRICAL  
DCSG-HIPROX  
VSD CABINET WIRING  
M-2610 HP WATER RECYCLE PUMP


USER	PROJECT	BUILDING	DRAWING	REV.
E	DCSG	BCC4	504	1



500	VSD CABINET ASSEMBLY								
205	DIGITAL OUTPUT WIRING NODE 4 MODULE 5								
202	DIGITAL INPUT WIRING NODE 4 MODULE 2								
112	ANALOG INPUT WIRING NODE 2 MODULE 5	1	ISSUE FOR TENDER	2017/03/24	RCM				
108	ANALOG OUTPUT WIRING NODE 1 MODULE 11	0	ISSUE FOR CLIENT REVIEW	2016/12/14	RCM				
011	VSD POWER DIST SINGLE LINE DIAGRAM	No							
REFERENCE DRAWINGS		REVISION REGISTER							
			REVISION DESCRIPTION	DATE (Y/M/D)	DRAWN	CKD	APPD		



excellence by design  
www.miriton.com



Natural Resources Canada  
Ressources naturelles Canada  
CANMET Energy Technology Center  
Centre de la technologie de l'énergie de CANMET

DESIGNED  
R. McNAIR

DRAWN  
R. McNAIR

CHECKED

APPROVED

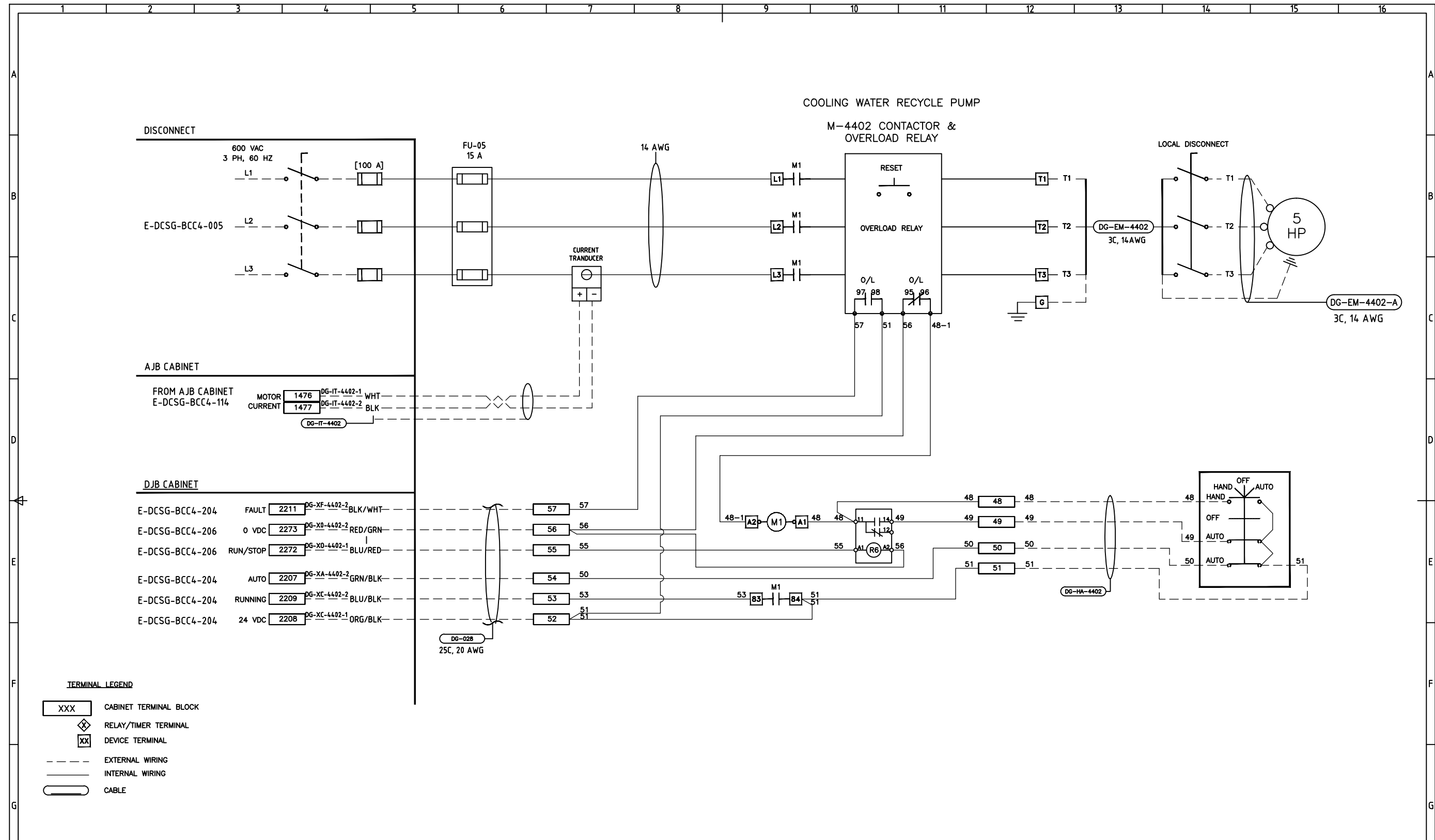
DATE  
2016/11/11

SCALE  
NONE

PROJECT  
NRCAN CANMET DCSG/HIPROX

TITLE  
ELECTRICAL  
DCSG-HIPROX  
VSD CABINET WIRING  
M-2403 LIQUID FUEL PUMP

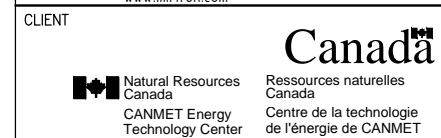
USER	PROJECT	BUILDING	DRAWING	REV.
E	DCSG	BCC4	505	1



**TERMINAL LEGEND**

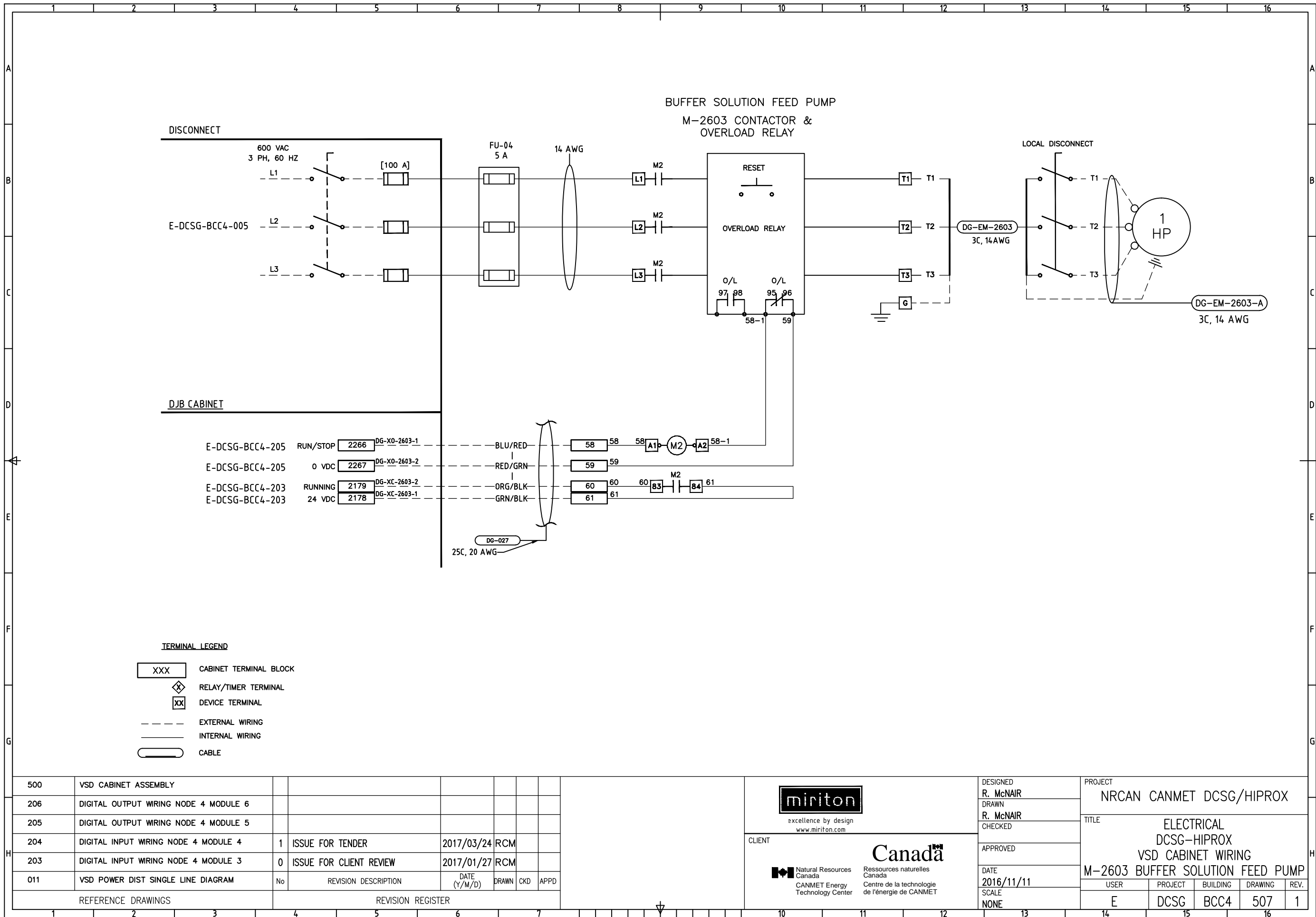
- XXX CABINET TERMINAL BLOCK
- ◇ RELAY/TIMER TERMINAL
- XX DEVICE TERMINAL
- EXTERNAL WIRING
- INTERNAL WIRING
- CABLE

500	VSD CABINET ASSEMBLY								
206	DIGITAL OUTPUT WIRING NODE 4 MODULE 6								
204	DIGITAL INPUT WIRING NODE 4 MODULE 4	1	ISSUE FOR TENDER	2017/03/24	RCM				
114	ANALOG INPUT WIRING NODE 2 MODULE 9	0	ISSUE FOR CLIENT REVIEW	2017/01/27	RCM				
011	VSD POWER DIST SINGLE LINE DIAGRAM	No							
REFERENCE DRAWINGS			REVISION REGISTER						
			REVISION DESCRIPTION	DATE (Y/M/D)	DRAWN	CKD	APPD		

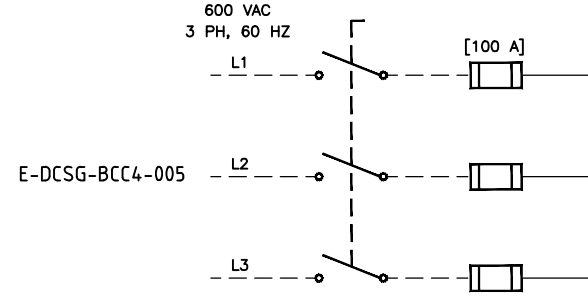


DESIGNED	R. McNAIR
DRAWN	R. McNAIR
CHECKED	
APPROVED	
DATE	2016/11/11
SCALE	NONE

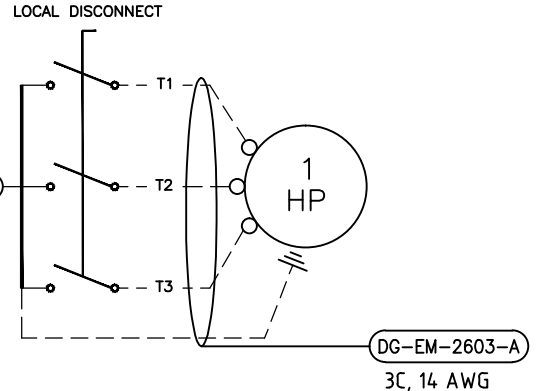
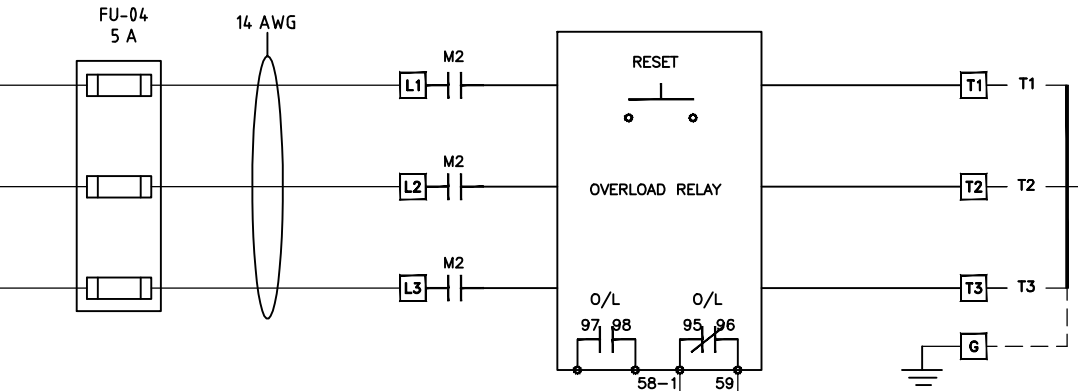
PROJECT				
NRCAN CANMET DCSG/HIPROX				
TITLE				
ELECTRICAL DCSG-HIPROX VSD CABINET WIRING M-4402 COOLING WATER RECYCLE PUMP				
USER	PROJECT	BUILDING	DRAWING	REV.
E	DCSG	BCC4	506	1



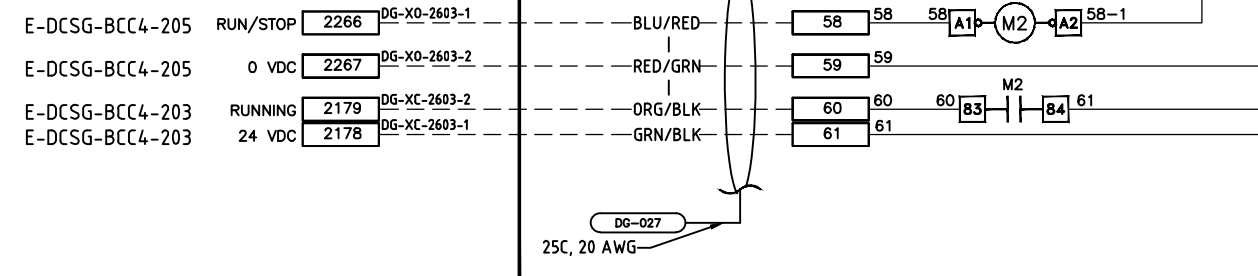
DISCONNECT



BUFFER SOLUTION FEED PUMP  
M-2603 CONTACTOR &  
OVERLOAD RELAY



DJB CABINET



TERMINAL LEGEND

- XXX CABINET TERMINAL BLOCK
- ◇ RELAY/TIMER TERMINAL
- XX DEVICE TERMINAL
- EXTERNAL WIRING
- INTERNAL WIRING
- CABLE

500	VSD CABINET ASSEMBLY							
206	DIGITAL OUTPUT WIRING NODE 4 MODULE 6							
205	DIGITAL OUTPUT WIRING NODE 4 MODULE 5							
204	DIGITAL INPUT WIRING NODE 4 MODULE 4	1	ISSUE FOR TENDER	2017/03/24	RCM			
203	DIGITAL INPUT WIRING NODE 4 MODULE 3	0	ISSUE FOR CLIENT REVIEW	2017/01/27	RCM			
011	VSD POWER DIST SINGLE LINE DIAGRAM	No						
REFERENCE DRAWINGS			REVISION REGISTER					

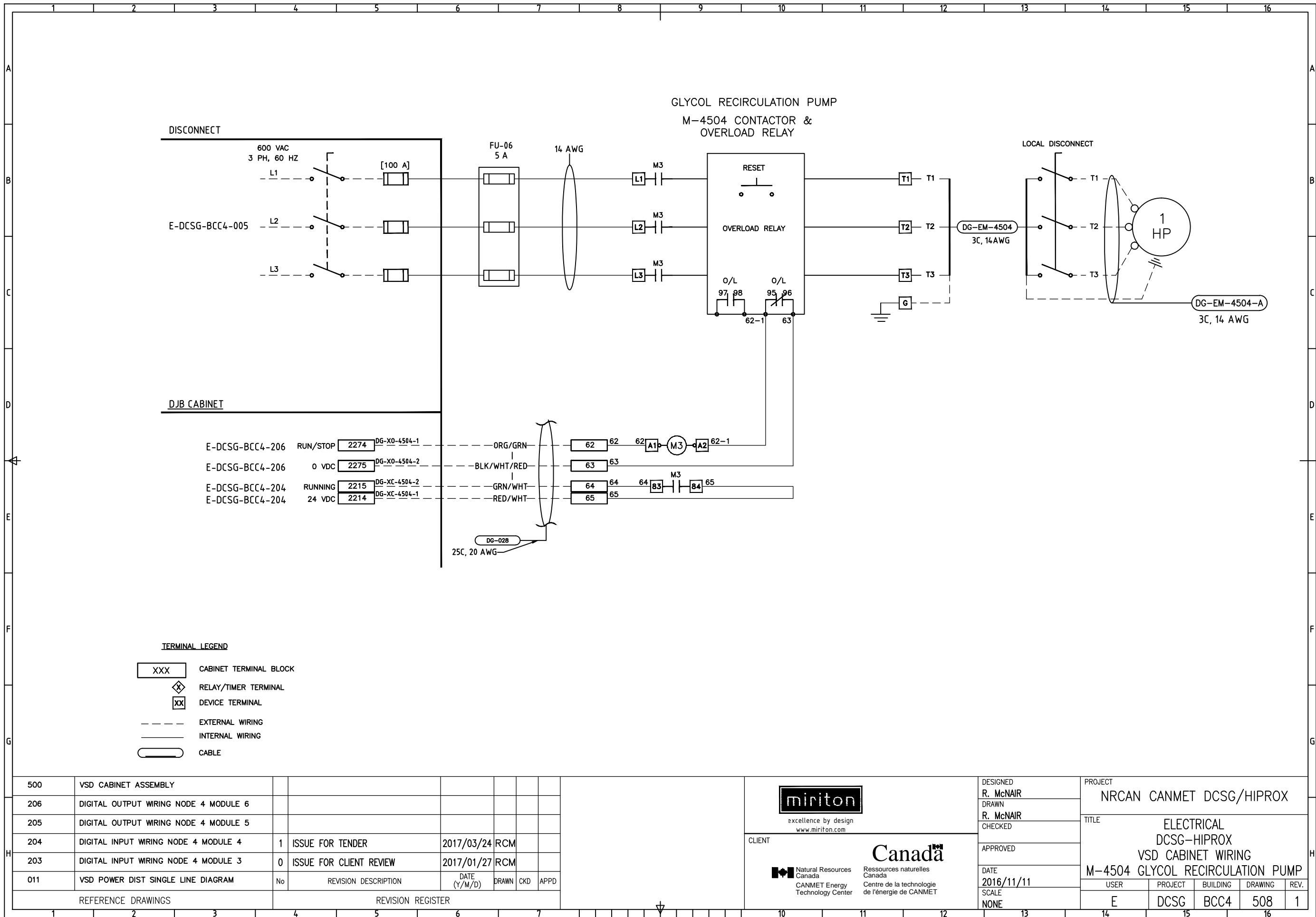
**miriton**  
excellence by design  
www.miriton.com

CLIENT  
**Canada**  
Natural Resources Canada  
Ressources naturelles Canada  
CANMET Energy Technology Center  
Centre de la technologie de l'énergie de CANMET

DESIGNED R. McNAIR
DRAWN R. McNAIR
CHECKED
APPROVED
DATE 2016/11/11
SCALE NONE

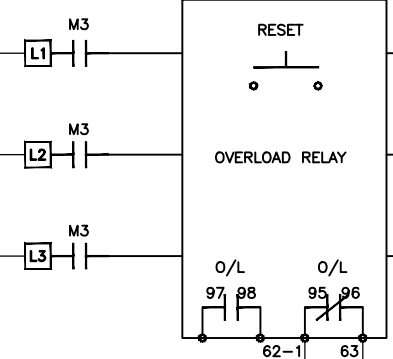
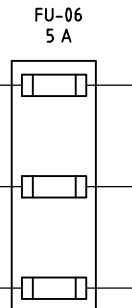
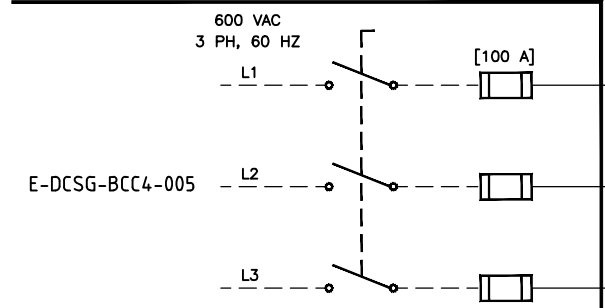
PROJECT NRCAN CANMET DCSG/HIPROX				
TITLE ELECTRICAL DCSG-HIPROX VSD CABINET WIRING M-2603 BUFFER SOLUTION FEED PUMP				
USER E	PROJECT DCSG	BUILDING BCC4	DRAWING 507	REV. 1



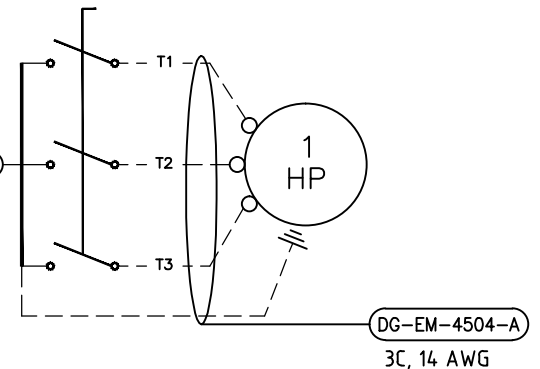


GLYCOL RECIRCULATION PUMP  
M-4504 CONTACTOR &  
OVERLOAD RELAY

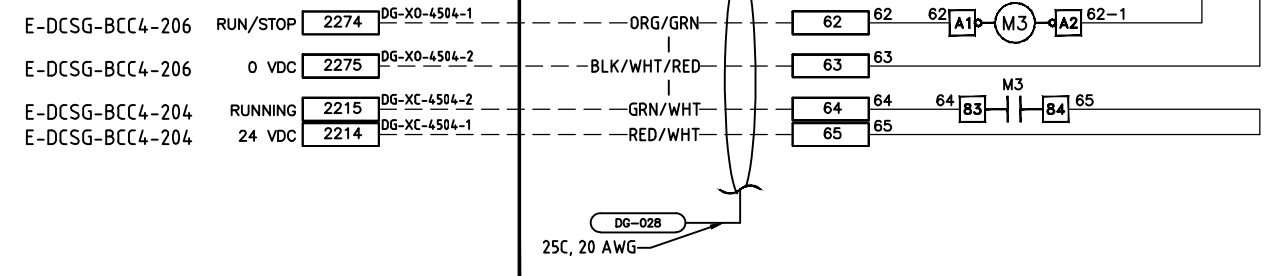
DISCONNECT



LOCAL DISCONNECT



DJB CABINET



TERMINAL LEGEND

- XXX CABINET TERMINAL BLOCK
- ◇ RELAY/TIMER TERMINAL
- XX DEVICE TERMINAL
- EXTERNAL WIRING
- INTERNAL WIRING
- CABLE

500	VSD CABINET ASSEMBLY							
206	DIGITAL OUTPUT WIRING NODE 4 MODULE 6							
205	DIGITAL OUTPUT WIRING NODE 4 MODULE 5							
204	DIGITAL INPUT WIRING NODE 4 MODULE 4	1	ISSUE FOR TENDER	2017/03/24	RCM			
203	DIGITAL INPUT WIRING NODE 4 MODULE 3	0	ISSUE FOR CLIENT REVIEW	2017/01/27	RCM			
011	VSD POWER DIST SINGLE LINE DIAGRAM	No						
REFERENCE DRAWINGS			REVISION REGISTER					

**miriton**  
excellence by design  
www.miriton.com

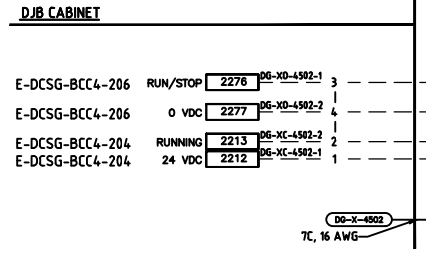
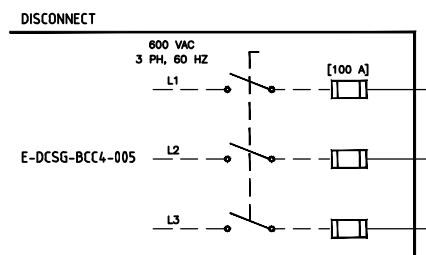
CLIENT

**Canada**  
Natural Resources Canada  
Ressources naturelles Canada  
CANMET Energy Technology Center  
Centre de la technologie de l'énergie de CANMET

DESIGNED R. McNAIR
DRAWN R. McNAIR
CHECKED
APPROVED
DATE 2016/11/11
SCALE NONE

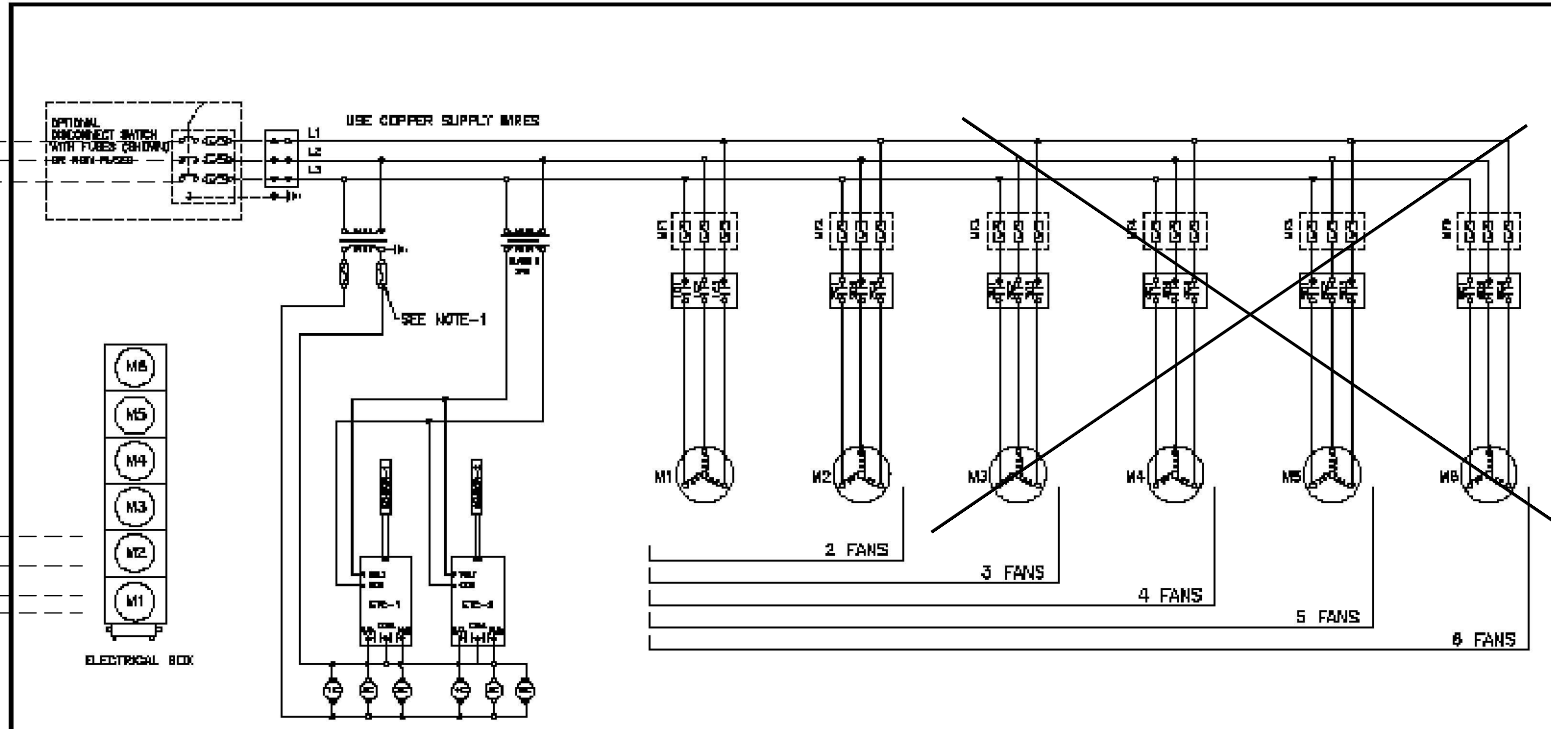
PROJECT NRCAN CANMET DCSG/HIPROX				
TITLE ELECTRICAL DCSG-HIPROX VSD CABINET WIRING M-4504 GLYCOL RECIRCULATION PUMP				
USER E	PROJECT DCSG	BUILDING BCC4	DRAWING 508	REV. 1

RefPlus - GLYCOL HEAT EXCHANGER CABINET  
LOCATED ON ROOF



UNIT VOLTAGE:	600/3/60	UNIT MODEL:	FID 020-8
MOTOR VOLTAGE:	600/3/60	QTY:	2
FLA:	2.3A	HP:	1.5EA
MOTOR FUSE SIZE:	—	QTY:	—
CLASS:	CC @ 600V		
CONTROL VOLTAGE:	24V		
CONTROL TRANSFORMER VA:	150V		
VOLTAGE PRIM:	600V	VOLTAGE SEC:	24V
TRANSFORMER FUSE SIZE:	10A		
CLASS:	MDD @ 250V		

LEGEND	
	MOTOR FUSES (OPTIONAL)
	FAN MOTOR CONTACTOR
	TRANSFORMER
	FAN MOTOR CONTACTOR COIL
	ETC ELECTRONIC TEMPERATURE CONTROL
	FAN MOTOR
	UNIT TERMINAL BLOCK
	TERMINAL BLOCK



TERMINAL LEGEND	
XXX	CABINET TERMINAL BLOCK
	RELAY/TIMER TERMINAL
	DEVICE TERMINAL
---	EXTERNAL WIRING
—	INTERNAL WIRING
	CABLE

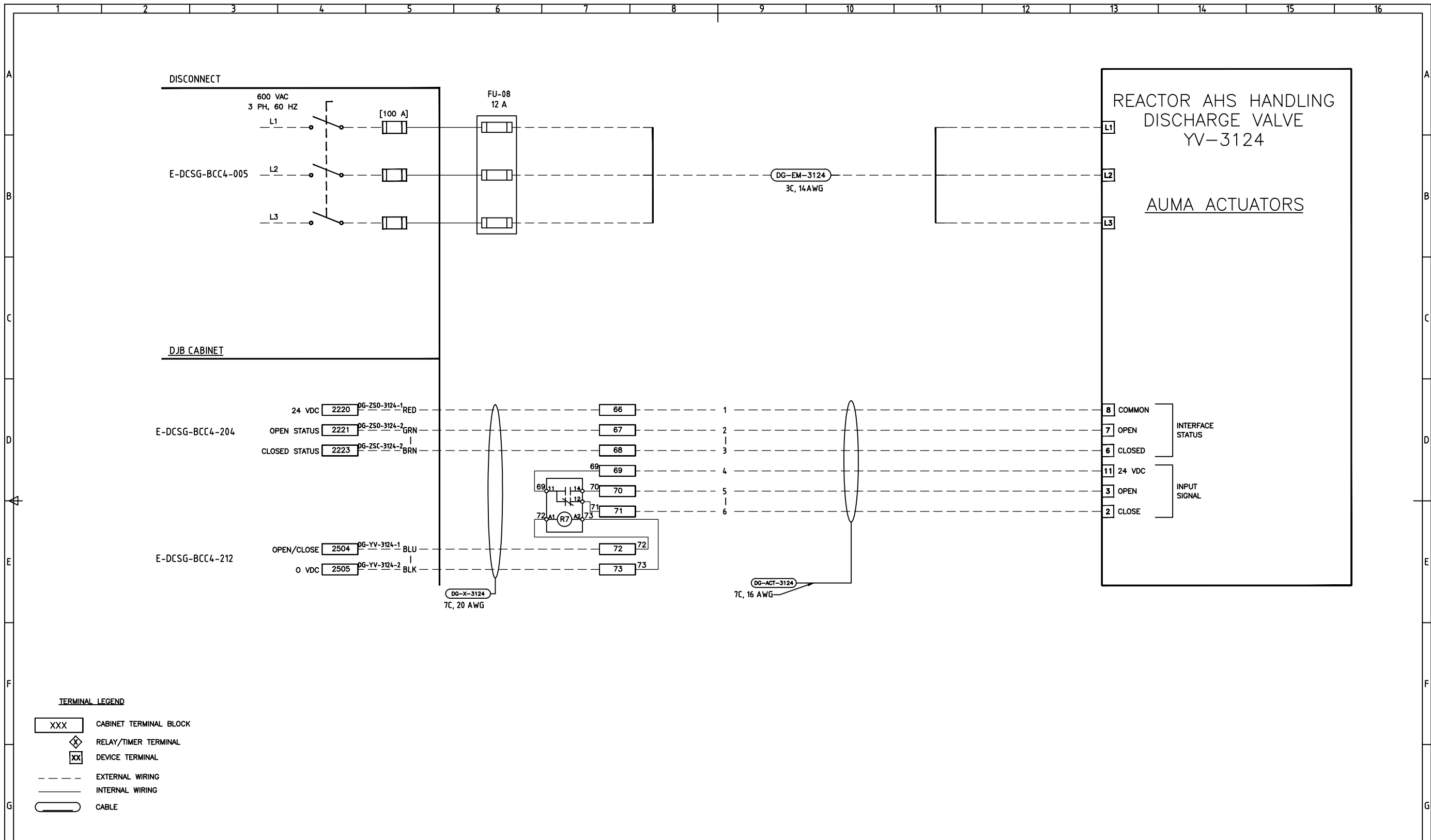
NOTE-1: SUPPLIED ONLY ON 206-204A SEC. (GROUND NOT APPLICABLE)

DESCRIPTION	ELECTRICAL DIAGRAM	REFPLUS 1288A Inc. Toronto, ON, CANADA TEL: (416) 291-2822 FAX: (416) 291-2823
REVISION	LARGE UNIT	LF1062

REV	DATE	BY	DESCRIPTION	DESIGNED BY	DATE	CHECKED BY	DATE
				J. FRANK	2003-01-23		

NO	DESCRIPTION	REV	DATE	BY	CHKD	APPD
500	VSD CABINET ASSEMBLY					
206	DIGITAL OUTPUT WIRING NODE 4 MODULE 6	1	2017/03/24	RCM		
204	DIGITAL INPUT WIRING NODE 4 MODULE 4	0	2017/01/27	RCM		
011	VSD POWER DIST SINGLE LINE DIAGRAM	No				

<p>excellence by design www.miron.com</p>	DESIGNED	R. McNAIR	PROJECT	NRCAN CANMET DCSG/HIPROX													
	DRAWN	R. McNAIR		TITLE	ELECTRICAL DCSG-HIPROX VSD CABINET WIRING M-4502A/B GLYCOL AIR COOLER FANS												
<p>Natural Resources Canada CANMET Energy Technology Center</p>	CHECKED		APPROVED	DATE	2016/11/11	SCALE	NONE	USER	E	PROJECT	DCSG	BUILDING	BCC4	DRAWING	509	REV.	1



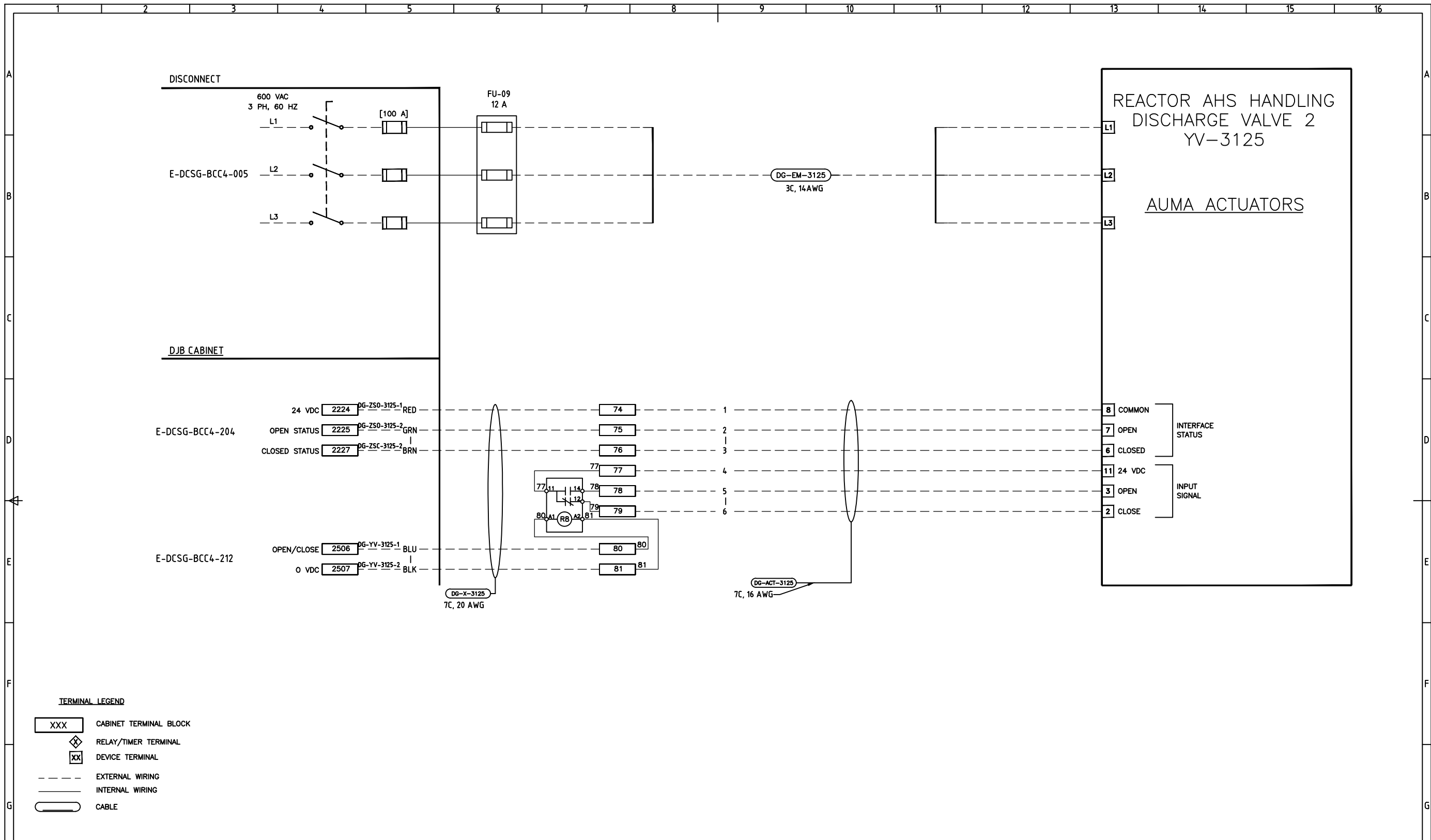
508	M-4502A/B MCC FVNR WIRING							
500	VSD CABINET ASSEMBLY							
212	DIGITAL OUTPUT WIRING NODE 5 MODULE 4	1	ISSUE FOR TENDER	2017/03/24	RCM			
204	DIGITAL INPUT WIRING NODE 4 MODULE 4	0	ISSUE FOR CLIENT REVIEW	2017/01/27	RCM			
011	VSD POWER DIST SINGLE LINE DIAGRAM	No						
REFERENCE DRAWINGS			REVISION REGISTER					

**miriton**  
excellence by design  
www.miriton.com

CLIENT  
**Canada**  
Natural Resources Canada  
CANMET Energy Technology Center  
Ressources naturelles Canada  
Centre de la technologie de l'énergie de CANMET

DESIGNED	R. McNAIR
DRAWN	R. McNAIR
CHECKED	
APPROVED	
DATE	2016/11/11
SCALE	NONE

PROJECT NRCAN CANMET DCSG/HIPROX				
TITLE ELECTRICAL DCSG-HIPROX VSD CABINET WIRING YV-3124 600V VALVE ACTUATOR				
USER	PROJECT	BUILDING	DRAWING	REV.
E	DCSG	BCC4	510	1



No	REVISION DESCRIPTION	DATE (Y/M/D)	DRAWN	CKD	APPD
508	M-4502A/B MCC FVNR WIRING				
500	VSD CABINET ASSEMBLY				
212	DIGITAL OUTPUT WIRING NODE 5 MODULE 4	2017/03/24	RCM		
204	DIGITAL INPUT WIRING NODE 4 MODULE 4	2017/01/27	RCM		
011	VSD POWER DIST SINGLE LINE DIAGRAM				

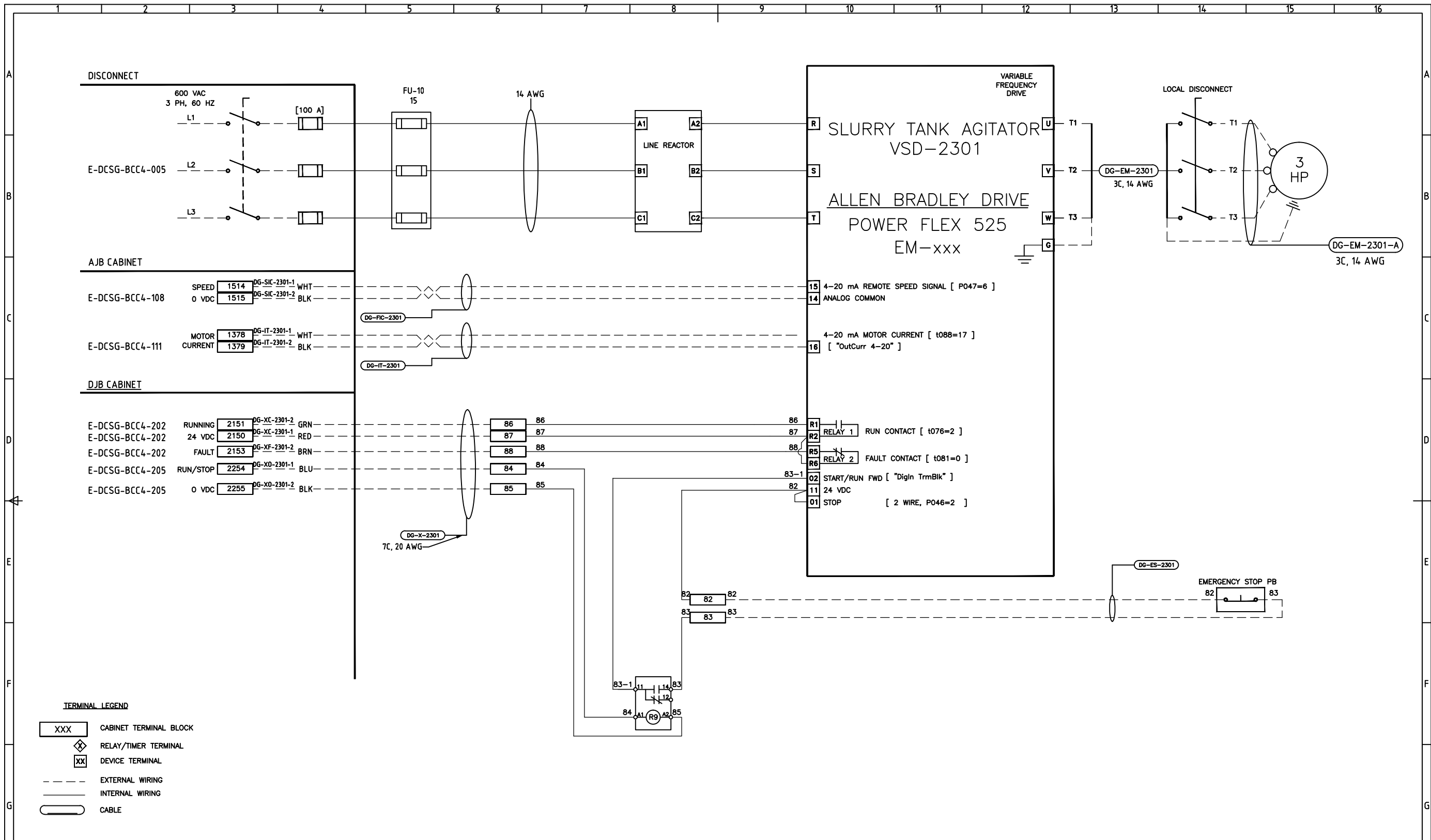
REFERENCE DRAWINGS		REVISION REGISTER				

**miriton**  
excellence by design  
www.miriton.com

CLIENT: **Canada**  
Natural Resources Canada / Ressources naturelles Canada  
CANMET Energy Technology Center / Centre de la technologie de l'énergie de CANMET

DESIGNED	R. McNAIR
DRAWN	R. McNAIR
CHECKED	
APPROVED	
DATE	2016/11/11
SCALE	NONE

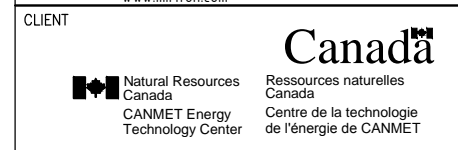
PROJECT: NRCAN CANMET DCSG/HIPROX				
TITLE: ELECTRICAL DCSG-HIPROX VSD CABINET WIRING YV-3125 600V VALVE ACTUATOR				
USER	PROJECT	BUILDING	DRAWING	REV.
E	DCSG	BCC4	511	1



**TERMINAL LEGEND**

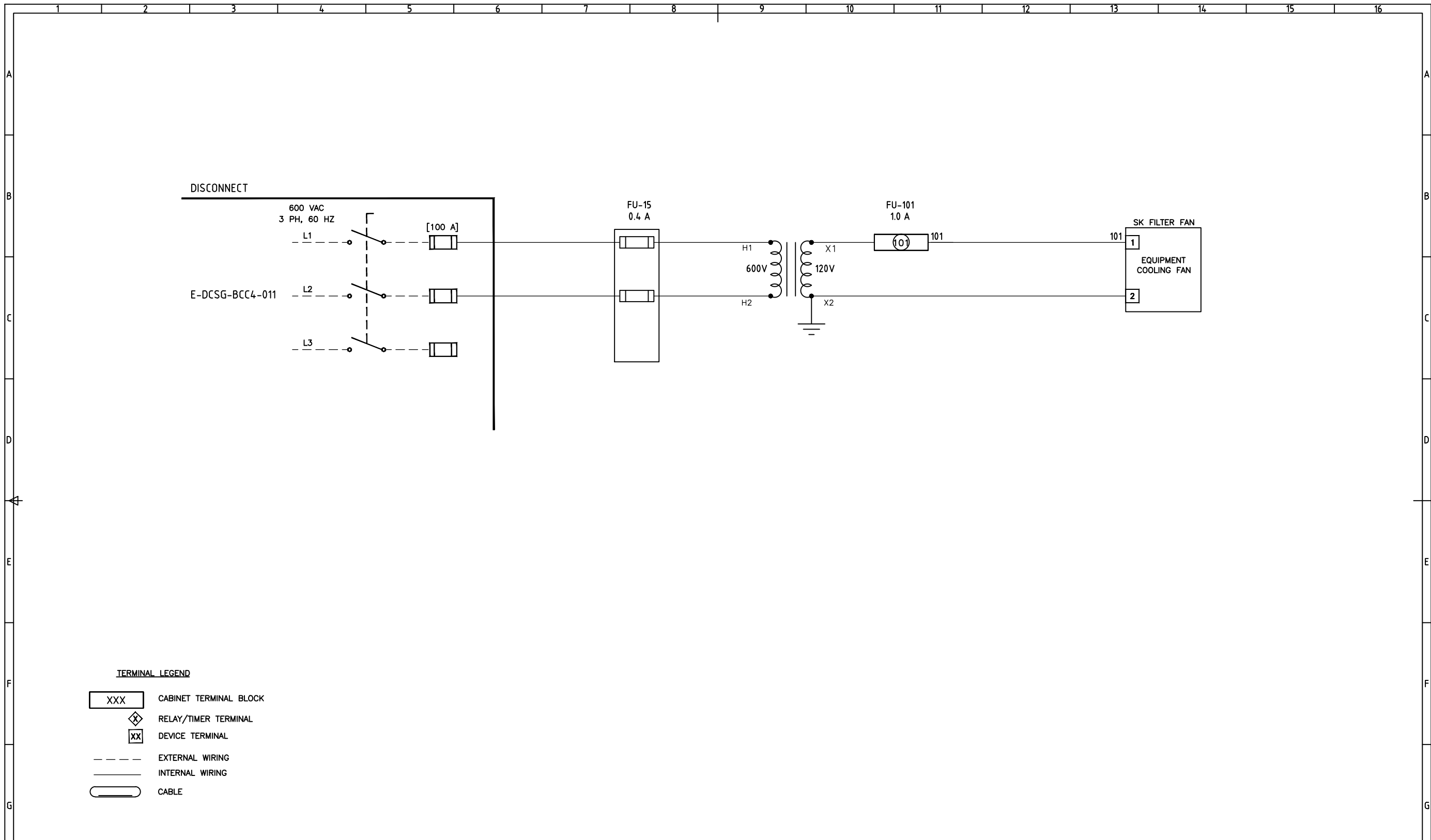
- XXX CABINET TERMINAL BLOCK
- ◇ RELAY/TIMER TERMINAL
- xx DEVICE TERMINAL
- EXTERNAL WIRING
- INTERNAL WIRING
- CABLE

500	VSD CABINET ASSEMBLY								
205	DIGITAL OUTPUT WIRING NODE 4 MODULE 5								
202	DIGITAL INPUT WIRING NODE 4 MODULE 2								
111	ANALOG INPUT WIRING NODE 2 MODULE 4	1	ISSUE FOR TENDER	2017/03/24	RCM				
108	ANALOG OUTPUT WIRING NODE 1 MODULE 10	0	ISSUE FOR CLIENT REVIEW	2017/02/28	RCM				
011	VSD POWER DIST SINGLE LINE DIAGRAM	No							
REFERENCE DRAWINGS		REVISION REGISTER							
			REVISION DESCRIPTION	DATE (Y/M/D)	DRAWN	CKD	APPD		



DESIGNED	R. McNAIR
DRAWN	R. McNAIR
CHECKED	
APPROVED	
DATE	2017/02/23
SCALE	NONE

PROJECT				
NRCAN CANMET DCSG/HIPROX				
TITLE				
ELECTRICAL DCSG-HIPROX VSD CABINET WIRING M-2301 SLURRY TANK AGITATOR MOTOR				
USER	PROJECT	BUILDING	DRAWING	REV.
E	DCSG	BCC4	512	1



**TERMINAL LEGEND**

<span style="border: 1px solid black; padding: 2px;">XXX</span>	CABINET TERMINAL BLOCK
<span style="border: 1px solid black; padding: 2px;">◇</span>	RELAY/TIMER TERMINAL
<span style="border: 1px solid black; padding: 2px;">XX</span>	DEVICE TERMINAL
---	EXTERNAL WIRING
—	INTERNAL WIRING
<span style="border: 1px solid black; border-radius: 50%; padding: 2px;"> </span>	CABLE

No	REVISION DESCRIPTION	DATE (Y/M/D)	DRAWN	CKD	APPD
1	ISSUE FOR TENDER	2017/03/24	RCM		
0	ISSUE FOR CLIENT REVIEW	2017/01/27	RCM		

011	VSD POWER DIST SINGLE LINE DIAGRAM	No	
-----	------------------------------------	----	--

REFERENCE DRAWINGS	REVISION REGISTER
--------------------	-------------------

excellence by design  
www.miriton.com

Natural Resources Canada  
CANMET Energy Technology Center

Ressources naturelles Canada  
Centre de la technologie de l'énergie de CANMET

DESIGNED	R. McNAIR
DRAWN	R. McNAIR
CHECKED	
APPROVED	
DATE	2016/11/11
SCALE	NONE

PROJECT NRCAN CANMET DCSG/HIPROX				
TITLE ELECTRICAL DCSG-HIPROX VSD CABINET WIRING SK FILTER FAN				
USER	PROJECT	BUILDING	DRAWING	REV.
E	DCSG	BCC4	513	1