

# NRC MONTREAL ROAD CAMPUS BUILDINGS M2 & M59 WASHROOMS RENOVATION

1200 MONTREAL ROAD, OTTAWA  
ELECTRICAL

National Research Council Canada  
Administrative Services and Property Management Branch  
Conseil national de recherches Canada  
Division des services administratifs et gestion de l'immobilier

**NRC - CNRC**

**Goodkey Weedmark**  
Consulting Engineers

GOODKEY WEEDMARK & ASSOCIATES LIMITED  
1688 Woodward Dr. Ottawa, Ontario Canada K2C 3R8  
GVAL Project: 2016-187  
613 727-5111  
613 727-5115  
www.gwal.com  
GWA# 2016-187



Contractor to verify all dimensions & conditions on site and immediately notify the engineer of all discrepancies.

9		
8		
7		
6		
5		
4		
3		
2		
1	ISSUED FOR TENDER	2017/05/16

revisions	description	date

project project

**NRC BUILDINGS M2 & M59 WASHROOMS RENOVATION - PHASE 2**

1200 MONTREAL ROAD, OTTAWA

drawing dessin

**ELECTRICAL LEGENDS, DRAWING LIST AND KEY PLANS**

Designed By	A.G.	Conçu par
Date	2016-04-13	(yyyy/mm/dd)
Drawn By	E.D.	Dessiné par
Date	2016-04-13	(yyyy/mm/dd)
Reviewed By	R.B.	Examiné par
Date	2016-04-13	(yyyy/mm/dd)
Approved By	R.B.	Approuvé par
Date	2016-04-13	(yyyy/mm/dd)
Tender		Soumission

Project Manager Administrateur de projets  
W.O. no. D.T. no.

**5378 & 5379**

Drawing no. No. du dessin

**E0.1**

ELECTRICAL LEGEND	
SYMBOL	DESCRIPTION
	FLUORESCENT LIGHT FIXTURE - TYPE AS SHOWN
	FLUORESCENT LIGHT FIXTURE EMERGENCY POWER - DO NOT SWITCH
	CEILING MOUNTED LIGHT FIXTURE - TYPE AS SHOWN
	WALL MOUNTED LIGHT FIXTURE - TYPE AS SHOWN
	WALL MOUNTED SWITCH - M.H. 1100mm A.F.F.
	WALL MOUNTED 3 WAY SWITCH - M.H. 1100mm A.F.F.
	WALL MOUNTED OCCUPANCY SENSOR - M.H. 1100mm A.F.F.
	CEILING MOUNTED OCCUPANCY SENSOR
	CEILING MOUNTED POWER PACK
	WALL MOUNTED EXIT SIGN
	CEILING MOUNTED EXIT SIGN
	FIRE ALARM CONTROL PANEL
	FIRE ALARM BELL
	FIRE ALARM HORN/STROBE
	FIRE ALARM STROBE LIGHT - CEILING MOUNTED
	FIRE ALARM HEAT DETECTOR
	FIRE ALARM SMOKE DETECTOR
	FIRE ALARM PULL STATION
	15A, 120V WALL MOUNTED DUPLEX RECEPTACLE
	15A, 120V WALL MOUNTED DEDICATED RECEPTACLE
	RECEPTACLE INSTALLED OVER COUNTER
	5-20R RECEPTACLE
	QUADRIPOLE RECEPTACLE
	SPECIAL RECEPTACLE
	PUSHBUTTON
	MOTOR RATED SWITCH
	FLEXIBLE CONDUIT
	CONDUIT DOWN
	SINGLE PHASE ELECTRIC MOTOR
	DISCONNECT SWITCH
	MANUAL MOTOR STARTER
	SURFACE MOUNTED ELECTRICAL PANEL
	RECESSED MOUNTED ELECTRICAL PANEL
	TRANSFORMER
	JUNCTION BOX
	HARDWIRE CONNECTION
	COMBINATION VOICE/DATA OUTLET

DRAWING LIST	
SYMBOL	DESCRIPTION
E0.1	ELECTRICAL LEGENDS, DRAWING LIST AND KEY PLANS
E1.1	M2 - GROUND FLOOR W/R 124 LIGHTING & POWER WORK
E2.1	M59 - GROUND FLOOR W/R 126/129 LIGHTING AND POWER WORK
E2.2	M59 - GROUND FLOOR W/R 115 & 104 LIGHTING & POWER WORK

**DEMOLITION NOTES:**

- UNLESS OTHERWISE NOTED, MATERIALS FOR REMOVAL BECOME THE CONTRACTOR'S PROPERTY AND SHALL BE TAKEN FROM SITE AND DISPOSED OF IN ACCORDANCE WITH ALL APPLICABLE CODES, STANDARDS AND REGULATIONS.
- DISCONNECT AND MAKE SAFE ALL SYSTEMS TO BE DEMOLISHED INCLUDING PANELS, FEEDERS, BRANCH CIRCUITS AND EQUIPMENT BY OTHER DIVISIONS. COORDINATE WITH OTHER DIVISIONS.
- MAINTAIN EXISTING REMAINING CIRCUITS, SYSTEMS, ETC., WHICH PASS THROUGH AREA OF CONSTRUCTION AND IN CLOSE PROXIMITY. PROVIDE NECESSARY COMPONENTS TO MAINTAIN SYSTEMS. ENSURE COMPONENTS WILL BE CONCEALED WHEN CONSTRUCTION IS COMPLETE.
- REINSTATE IMMEDIATELY ANY REMAINING EXISTING SYSTEMS IN-ADVERTENTLY INTERRUPTED DURING CONSTRUCTION.
- THE DRAWINGS INDICATE KNOWN CONDITIONS AND MAY NOT INDICATE ALL DEMOLITION REQUIREMENTS. ELECTRICAL CONTRACTOR SHALL VISIT THE SITE PRIOR TO TENDER SUBMISSION AND VERIFY REQUIREMENTS AND INCLUDE ALL COSTS IN TENDER.
- REMOVE REDUNDANT CONDUIT AND WIRING BACK TO SOURCE UNLESS OTHERWISE NOTED, AND MAKE SAFE.
- DEVICES FROM DEMOLITION ARE NOT TO BE REUSED UNLESS NOTED OTHERWISE. NEW DEVICES SHALL BE SUPPLIED WHERE NECESSARY.
- ALL FIRE ALARM DEVICES TO REMAIN IN OPERATION. PROTECT SMOKE DETECTORS FROM DUST EXPOSURE DURING CONSTRUCTION.
- ENSURE FIRE ALARM SYSTEM IS OPERATIONAL AT THE END OF EACH SHIFT.
- AFTER DEMOLITION WORK IS COMPLETE AND MINIMUM THREE (3) WORKING DAYS PRIOR TO PROCEEDING WITH NEW WORK, NOTIFY ENGINEER FOR INSPECTION.

**GENERAL NOTES:**

- ELECTRICAL WORK TO BE DONE IN ACCORDANCE WITH THE ELECTRICAL SAFETY CODE OF ONTARIO, AND WITH NEW ARCHITECTURAL/INTERIOR DESIGNER'S LAYOUT (LOCATION/MOUNTING HEIGHTS). CONTRACTOR TO OBTAIN ALL NECESSARY PERMITS, PAY ALL APPLICABLE FEES AND INSPECTION COSTS.
- COORDINATE WORK WITH ALL OTHER TRADES TO AVOID INTERFERENCE.
- ENSURE ELECTRICAL COMPONENTS (E. WIRING, CONDUIT, ETC.) RELATING TO THE AREA OF WORK ARE INDEPENDENTLY SECURED TO COMPLY WITH CODE REQUIREMENTS. IT IS NOT ACCEPTABLE TO SECURE THE COMPONENTS TO DUCTWORK, DUCT WORK TO CONDUIT, OR ANY OTHER SYSTEMS.
- ENSURE ALL EXISTING CEILING MOUNTED BOXES ARE CLOSED PRIOR TO COMPLETION OF PROJECT. PROVIDE LABELLED AND COLOUR CODED COVER PLATES (E. PANEL NAME AND CIRCUIT NUMBER) AS REQUIRED.
- MINIMUM THREE (3) WORKING DAYS PRIOR TO CLOSING CEILING, NOTIFY THE ENGINEER FOR CEILING INSPECTION.

**LIGHTING NOTES:**

- CLEAN LAMPS, LENSES, INTERIOR AND VISIBLE SURFACES OF LUMINAIRES. REPLACE DEFECTIVE LAMPS, BALLAST AND DAMAGED LENSES.
- LUMINAIRES IN CONSTRUCTION AREA ARE TO BE INDEPENDENTLY SUPPORTED, INCLUDING EXISTING TO REMAIN, RELOCATED AND NEW, TO COMPLY WITH CODE REQUIREMENTS.
- ADD, RELOCATE AND CONNECT LIGHT FIXTURES TO SUIT INDICATED LAYOUT, EXTEND CONDUIT AND WIRING AS NECESSARY AND CONNECT LUMINAIRES TO EXISTING CIRCUITS. TURN OVER SURPLUS FIXTURES TO OWNER.
- WHERE AIR SUPPLY ROFFER ARE BEING RELOCATED BY MECHANICAL CONTRACTOR TO EXISTING LIGHT FIXTURE, ELECTRICAL CONTRACTOR TO COORDINATE DISCONNECTION AND RECONNECTION AS REQUIRED.

**EXIT LIGHTS:**

- CONNECT EXIT LIGHTS TO AC AND DC SUPPLIES.
- ADD/REMOVE DIRECTIONAL ARROWS TO SUIT FLOOR PLAN LAYOUT.
- IN OPEN AREA ENSURE THE DEVICE HAS 610mm CLEARANCE FROM ANY SPRINKLER HEAD.

**FIRE ALARM NOTES:**

- PROVIDE NEW CIRCUITS AS REQUIRED FOR AUDIBLE AND ALARM CIRCUITS.
- TEST FINAL INSTALLATION AND PROVIDE VERIFICATION OF FIRE ALARM SYSTEMS IN ACCORDANCE WITH CAN/ULC S537 LATEST EDITION. VERIFICATION REPORT SHALL INCLUDE MEASURED dB LEVELS.

**POWER NOTES:**

- ENSURE EXISTING REMAINING OUTLETS IN AFFECTED AREA ARE FUNCTIONAL.
- DO NOT MOUNT WALL OUTLETS BACK TO BACK. LEAVE MINIMUM 300mm SPACE BETWEEN OUTLETS. STAGGER OUTLETS WITHIN ALTERNATE STUD CAVITIES. DO NOT ANCHOR BACK TO BACK OUTLETS TO THE SAME STUD.

**COLOR CODING:**

APPLICABLE TO NEW OR RELOCATED WORK UNLESS OTHERWISE NOTED.

- TO CONFORM TO CLIENT'S BUILDING CODING SYSTEM.
- COLOUR CODE CONDUITS AND BOXES.
- CODE WITH PLASTIC TAPE OR PAINT WHERE CONDUITS ENTER WALLS, CEILING, OR FLOOR AND AT 15 METER INTERVALS.
- COLOURS: 25mm WIDE PRIME COLOUR AND 20mm WIDE AUXILIARY COLOUR.

**SERVICE**      PRIME COLOUR      AUXILIARY COLOUR

UP TO 250V      BLUE

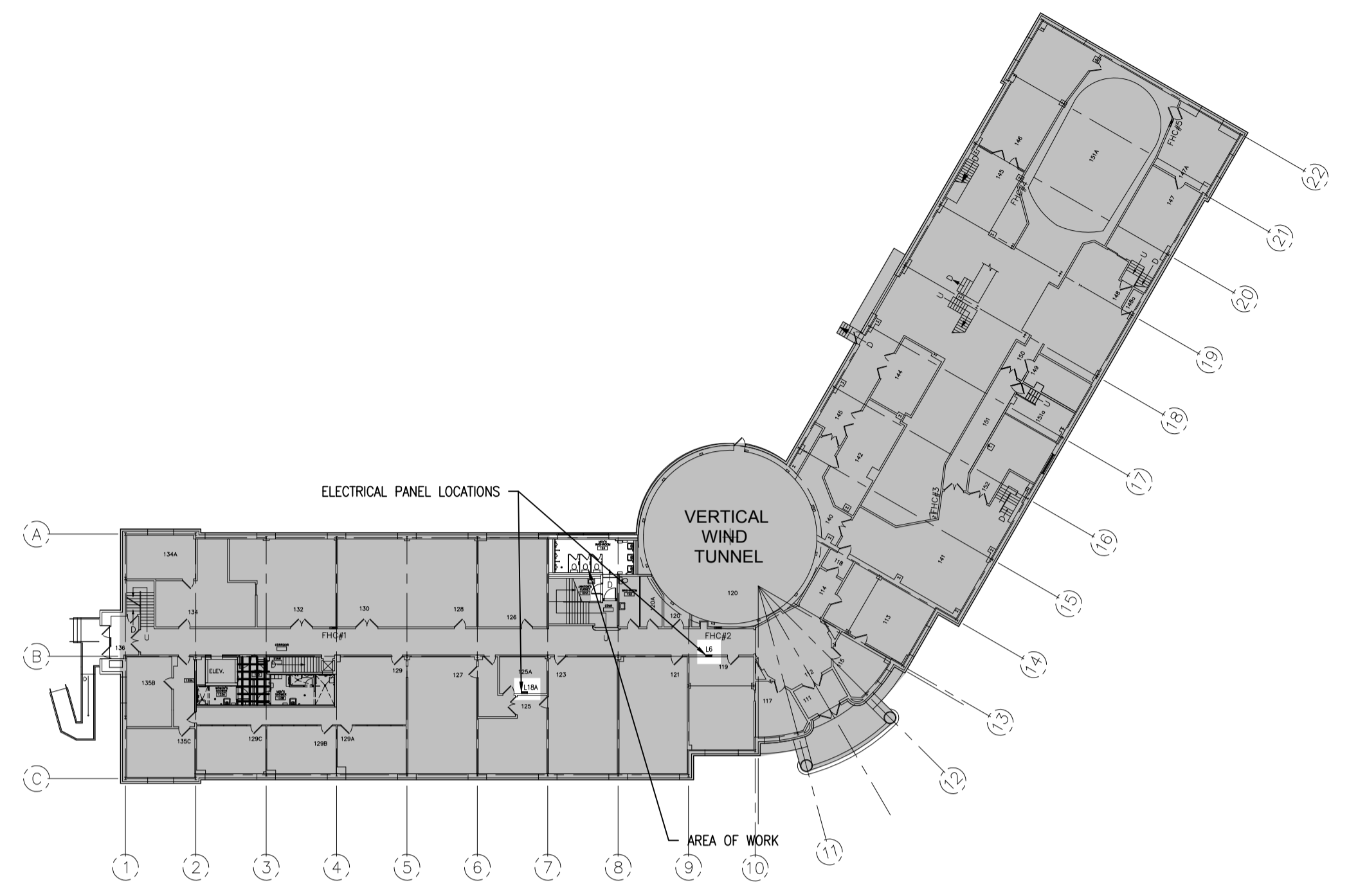
FIRE ALARM      RED

**OUTLETS LOCATION:**

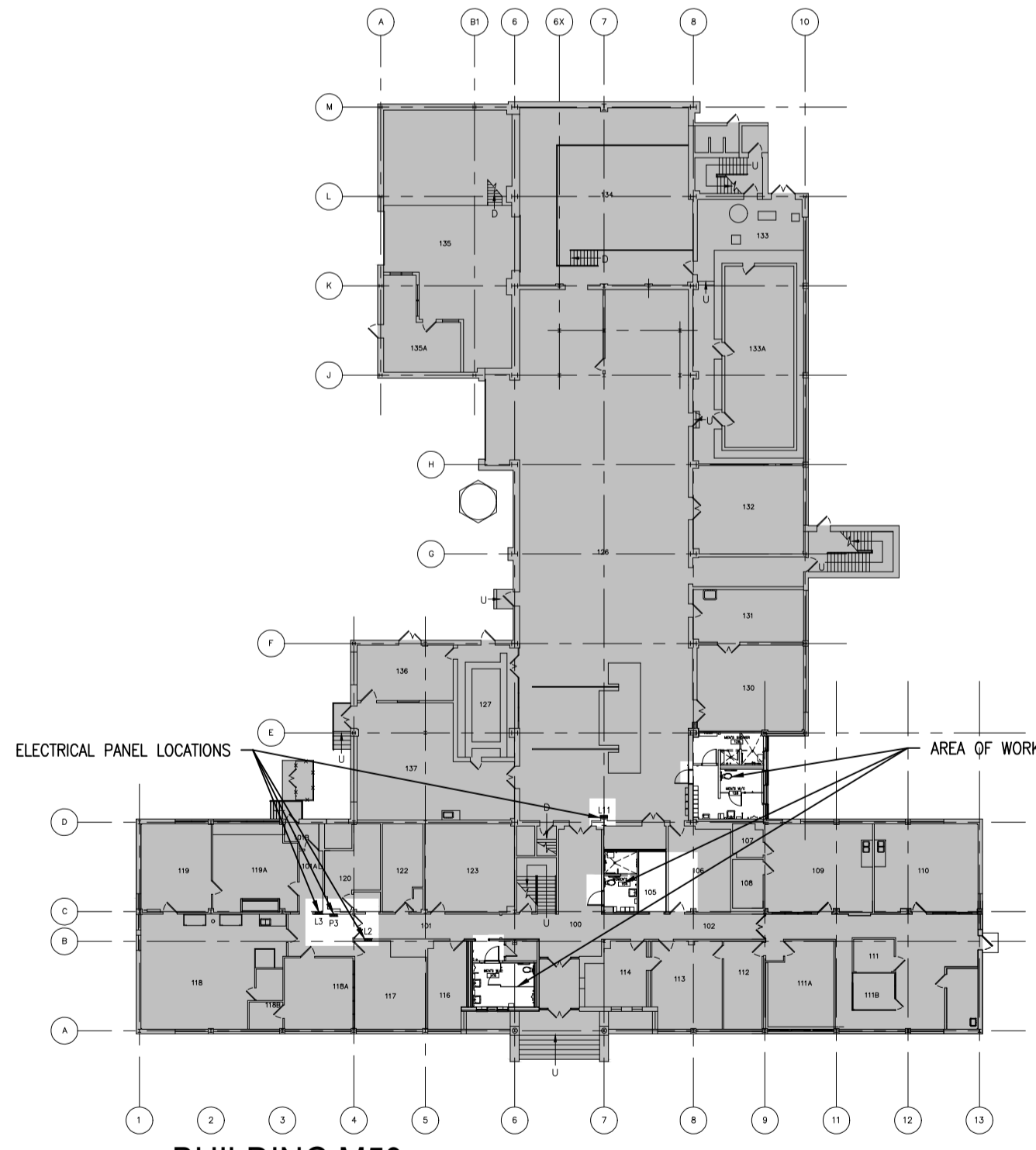
- EXACT LOCATION AND MOUNTING HEIGHTS OF OUTLETS TO BE COORDINATED WITH INTERIOR DESIGNER/ARCHITECTURAL DRAWINGS PRIOR TO ROUGH IN. REFER TO ARCHITECTURAL/DESIGNER DRAWINGS FOR MILLWORK, FURNITURE, SCREENS, COMPONENTS (E. TV, DRINKING FOUNTAIN, ETC.) FOR REQUIREMENTS.
- BRING TO THE ATTENTION OF THE ARCHITECT / INTERIOR DESIGNER AND ENGINEER ANY CONFLICTS OR REQUIRED CLARIFICATION.
- FAILING TO COORDINATE, THE CONTRACTOR WILL MODIFY THE INSTALLATION AT HIS EXPENSE, IF REQUIRED.

ABBREVIATION LEGEND	
SYMBOL	DESCRIPTION
B	BLANK WALL PLATE
C	CEILING MOUNTED
E	EXISTING, TO REMAIN
GFI	GROUND FAULT INTERRUPTER
R	EXISTING, TO BE DISCONNECTED AND REMOVED
OC	INSTALLED OVER COUNTER TOP
S	SURFACE MOUNTED
WP	WEATHERPROOF
N	NEW

LINTYPE LEGEND	
LINTYPE	DESCRIPTION
—	EXISTING
—	NEW WORK
- - - - -	DEMOLITION WORK
— · — · —	ARCHITECTURAL GRID LINES
.....	CEILING GRID

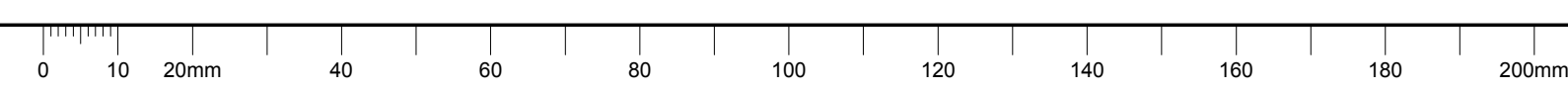


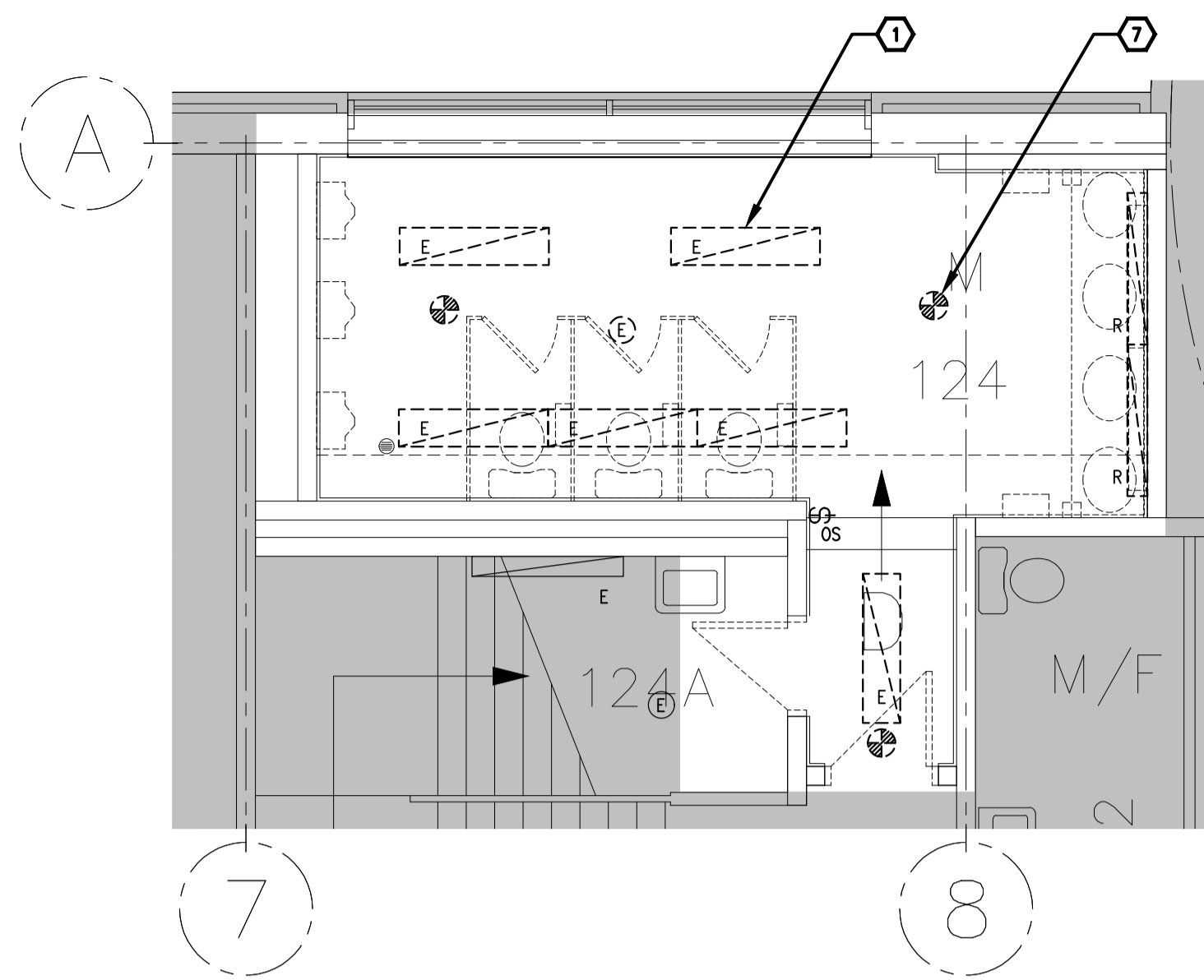
**BUILDING M2 GROUND FLOOR KEY PLAN**



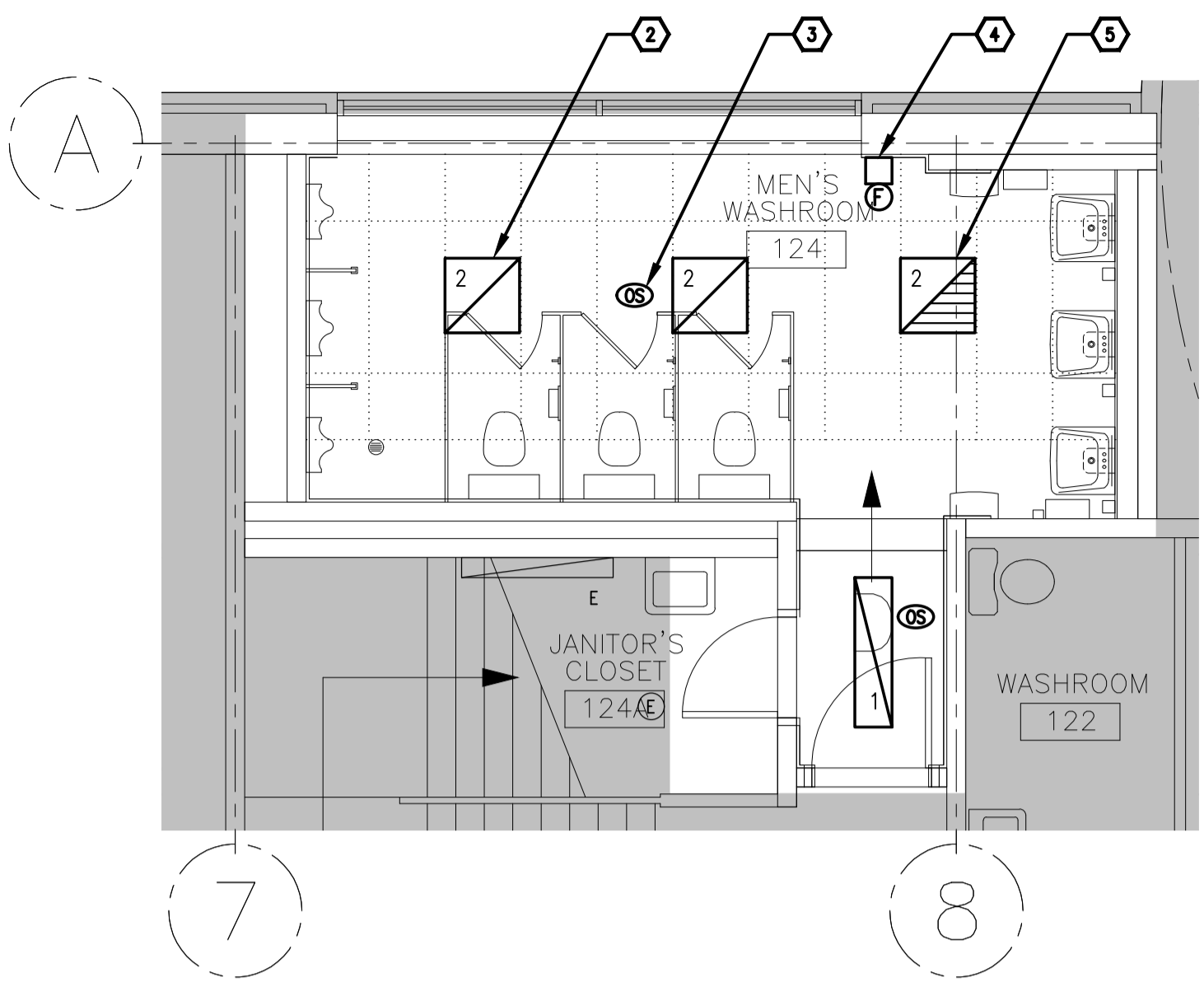
**BUILDING M59 GROUND FLOOR KEY PLAN**

LIGHTING FIXTURE SCHEDULE								
TYPE	DESCRIPTION	CATALOG NUMBER	LAMPS PER FIXTURE			VOLT	MOUNTING	REMARKS
			QTY	TYPE	WATTS			
1	305mm X 1220mm LED TROFFER SUITABLE FOR DAMP LOCATION	PINNACLE LIGHTING - LUCEN LU14A-4042-FL-UV-1C-W-PAF	1	LED	47W	4000K	120V	RECESSED DRYWALL
2	NEW 610mm X 610mm LED TROFFER	PINNACLE LIGHTING - LUCEN LU22A-4042-G1-1C-W-DSM	1	LED	47W	4000K	120V	RECESSED FIXTURE SHALL BE COMPLETE WITH INTEGRATED DAYLIGHT SENSOR.
3	NEW 179mm ROUND LED DOWNLIGHT SUITABLE FOR WET LOCATION	PHILIPS LIGHTOLIER SLIMSURFACE LED S7R-8-40K-10	1	LED	14.2W	4000K	120V	SURFACE

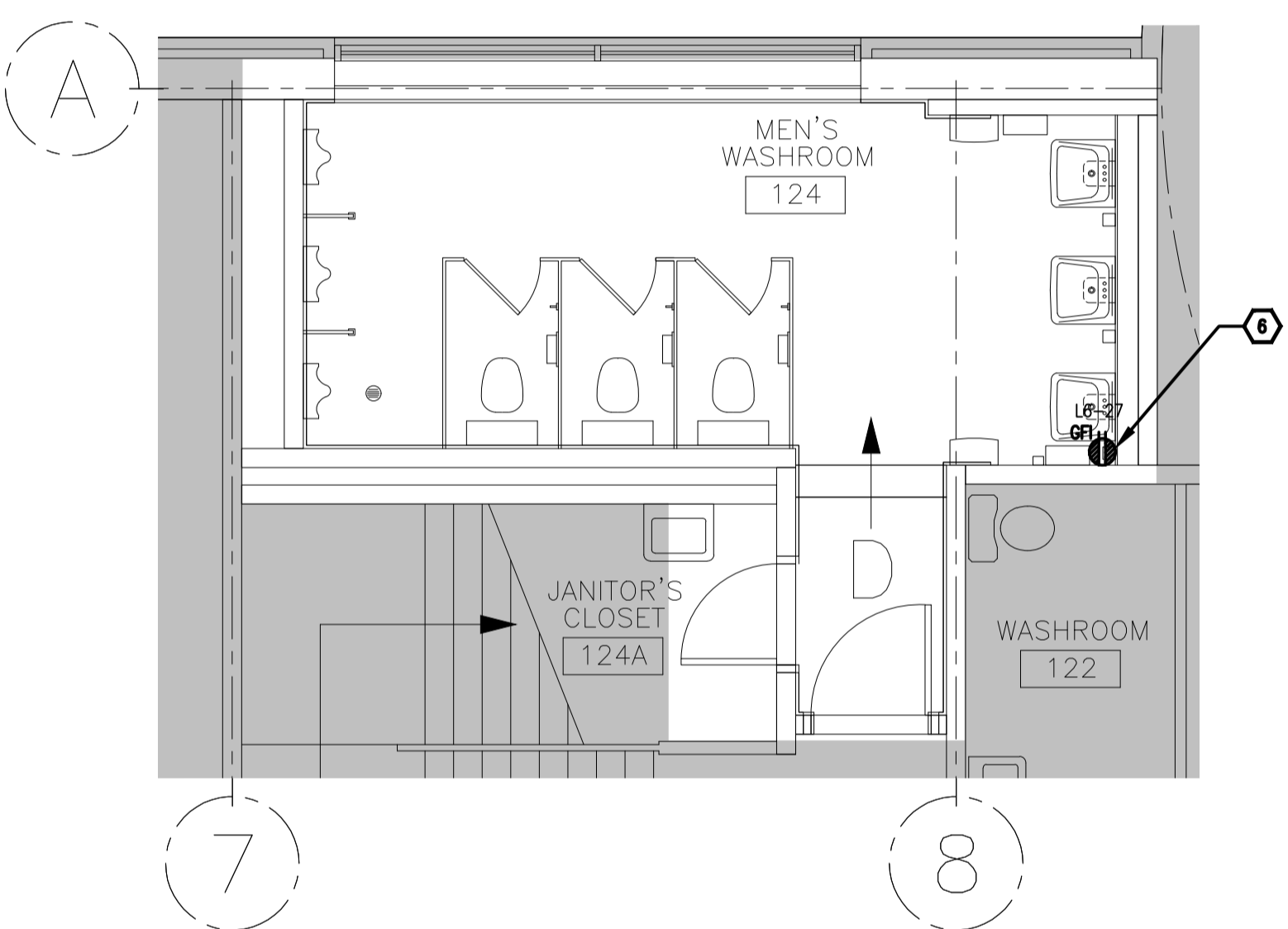




**1**  
E1.1 1:50  
M2 - GROUND FLOOR WASHROOM 124  
LIGHTING & FIRE ALARM DEMOLITION WORK

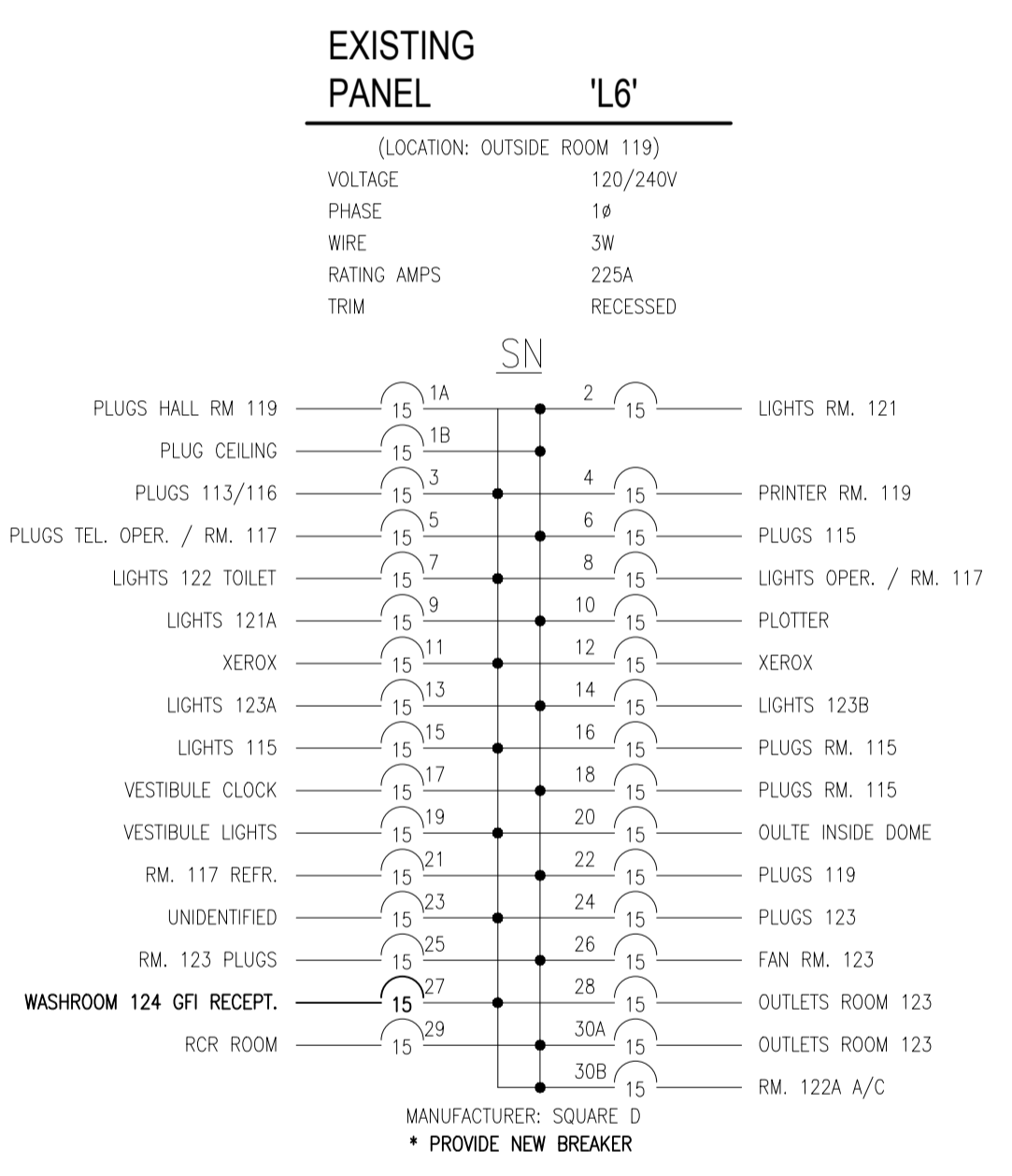


**2**  
E1.1 1:50  
M2 - GROUND FLOOR WASHROOM 124  
LIGHTING & FIRE ALARM NEW WORK



**3**  
E1.1 1:50  
M2 - GROUND FLOOR WASHROOM 124  
POWER & SYSTEMS NEW WORK

- DRAWING NOTES**
- 1 TYPICAL: DISCONNECT AND REMOVE EXISTING ELECTRICAL DEVICE AS SHOWN. REMOVE CONDUIT AND WIRING BACK TO NEAREST CEILING JUNCTION BOX AND MAKE SAFE. RETAIN CIRCUIT FOR USE IN NEW LAYOUT.
  - 2 TYPICAL: PROVIDE NEW LIGHT FIXTURE, TYPE AS INDICATED. CONNECT TO EXISTING LIGHTING CIRCUIT FEEDING THE AREA. REFERENCE LIGHT FIXTURE SCHEDULE ON DRAWING E1.
  - 3 TYPICAL: PROVIDE NEW LOW VOLTAGE, DUAL TECHNOLOGY, CEILING MOUNTED OCCUPANCY SENSOR AS INDICATED EQUAL TO DIVERSA WOR SERIES C/W CEILING MOUNTED POWER PACK AS SHOWN EQUAL TO DIVERSA WP-PP20-D SERIES. PROVIDE INTERCONNECTIONS BETWEEN OCCUPANCY SENSORS, POWER PACK AND LIGHTING AS PER MANUFACTURER'S RECOMMENDATION.
  - 4 PROVIDE NEW FIRE ALARM BELL AS INDICATED TO MATCH BASE BUILDING STANDARD. CONNECT TO EXISTING FIRE ALARM CIRCUIT FEEDING THE AREA.
  - 5 CONNECT NEW FIXTURE TO NEAREST EMERGENCY CIRCUIT FEEDING THE AREA.
  - 6 TYPICAL: PROVIDE NEW ELECTRICAL DEVICE AS INDICATED. CONNECT TO INDICATED CIRCUIT.
  - 7 TYPICAL: DISCONNECT AND REMOVE EXISTING FIRE ALARM HEAT DETECTOR AS SHOWN. REMOVE CONDUIT AND WIRING BACK TO NEAREST CEILING JUNCTION BOX AND MAKE SAFE.



Contractor to verify all dimensions & conditions on site and immediately notify the engineer of all discrepancies.

9		
8		
7		
6		
5		
4		
3		
2		
1	ISSUED FOR TENDER	2017/05/16

revisions	description	date

project projet

**NRC BUILDINGS M2 & M59 WASHROOMS RENOVATION - PHASE 2**

1200 MONTREAL ROAD, OTTAWA

drawing dessin

**M2 - GROUND FLOOR W/R 124 LIGHTING & POWER WORK**

Designed By	A.G.	Conçu par	
Date	2016-04-13	(yyyy/mm/dd)	
Drawn By	E.D.	Dessiné par	
Date	2016-04-13	(yyyy/mm/dd)	
Reviewed By	R.B.	Examiné par	
Date	2016-04-13	(yyyy/mm/dd)	
Approved By	R.B.	Approuvé par	
Date	2016-04-13	(yyyy/mm/dd)	
Tender		Soumission	

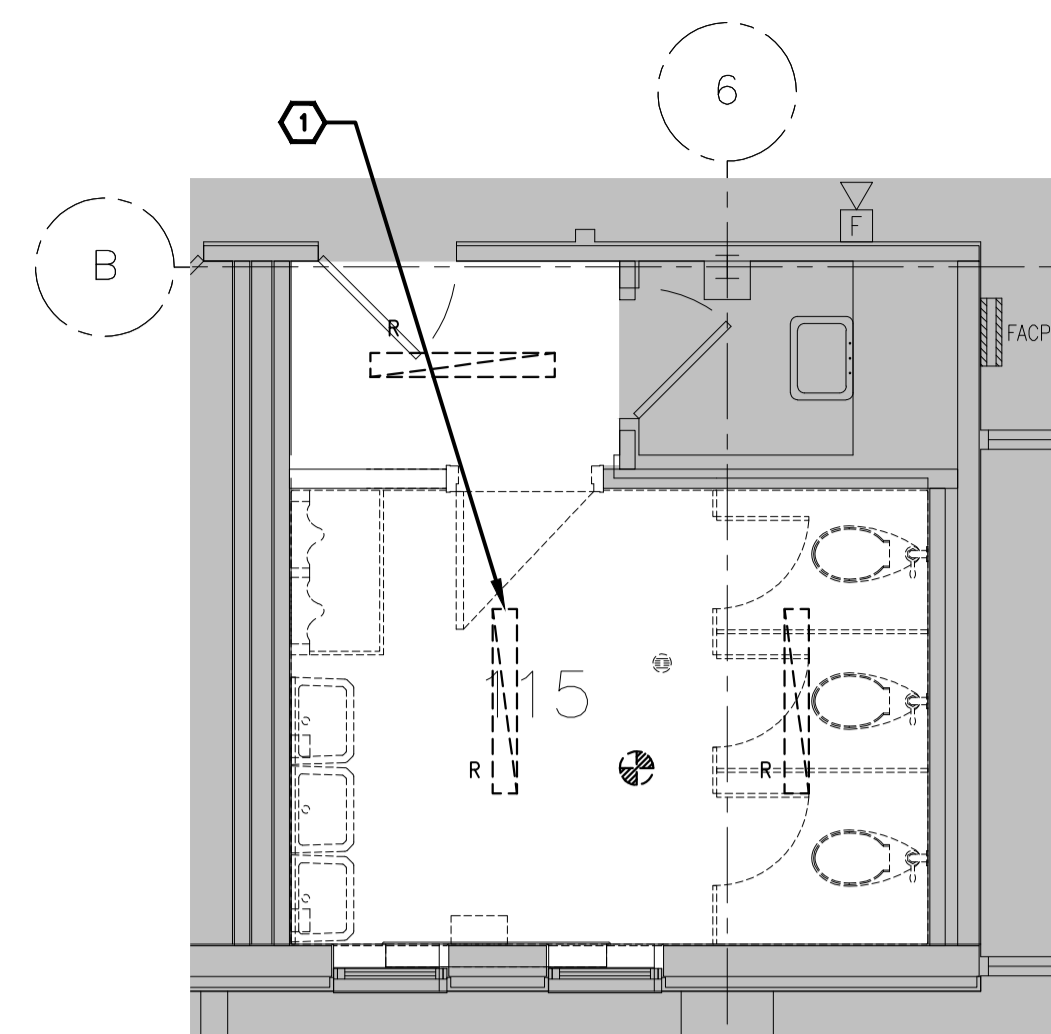
Project Manager / Administrateur de projets

W.O. no. 5378 & 5379 D.T. no.

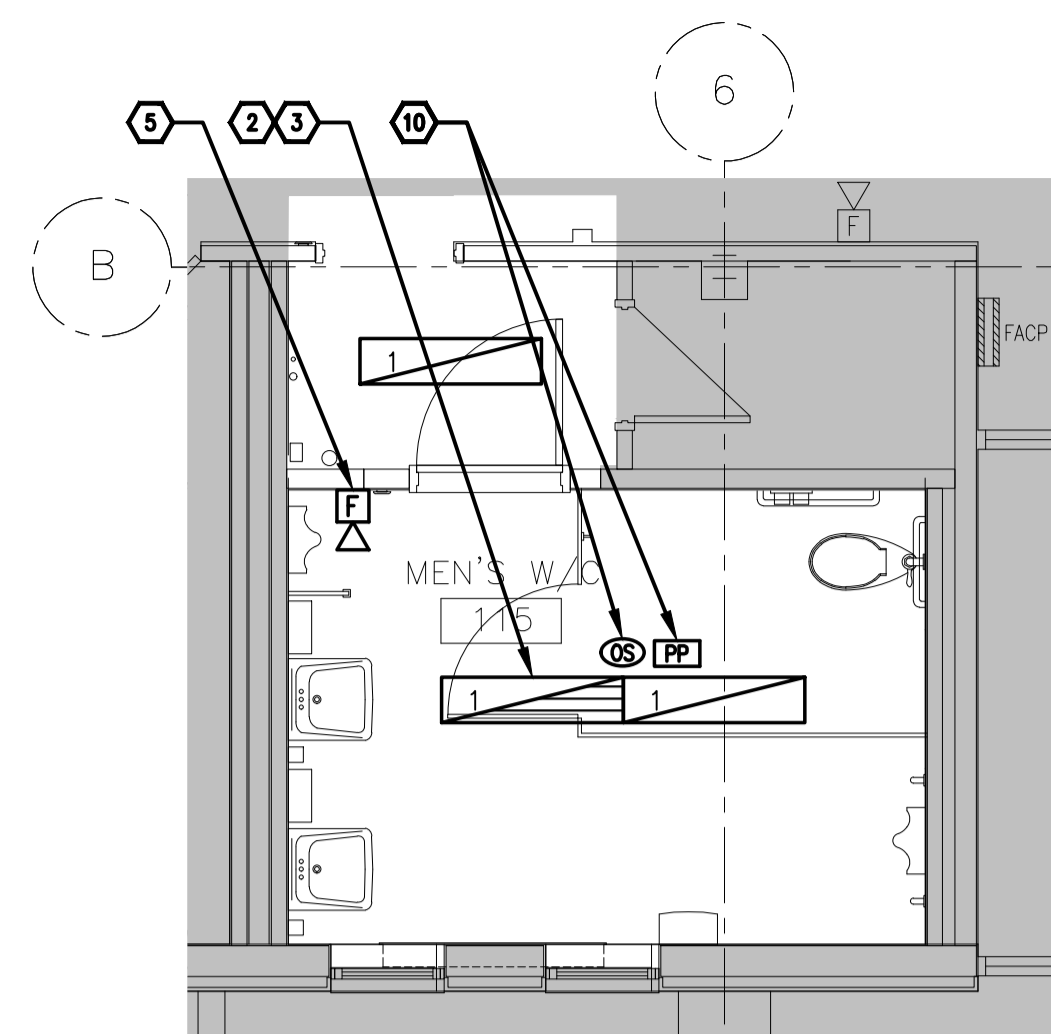
Drawing no. E1.1 No. du dessin



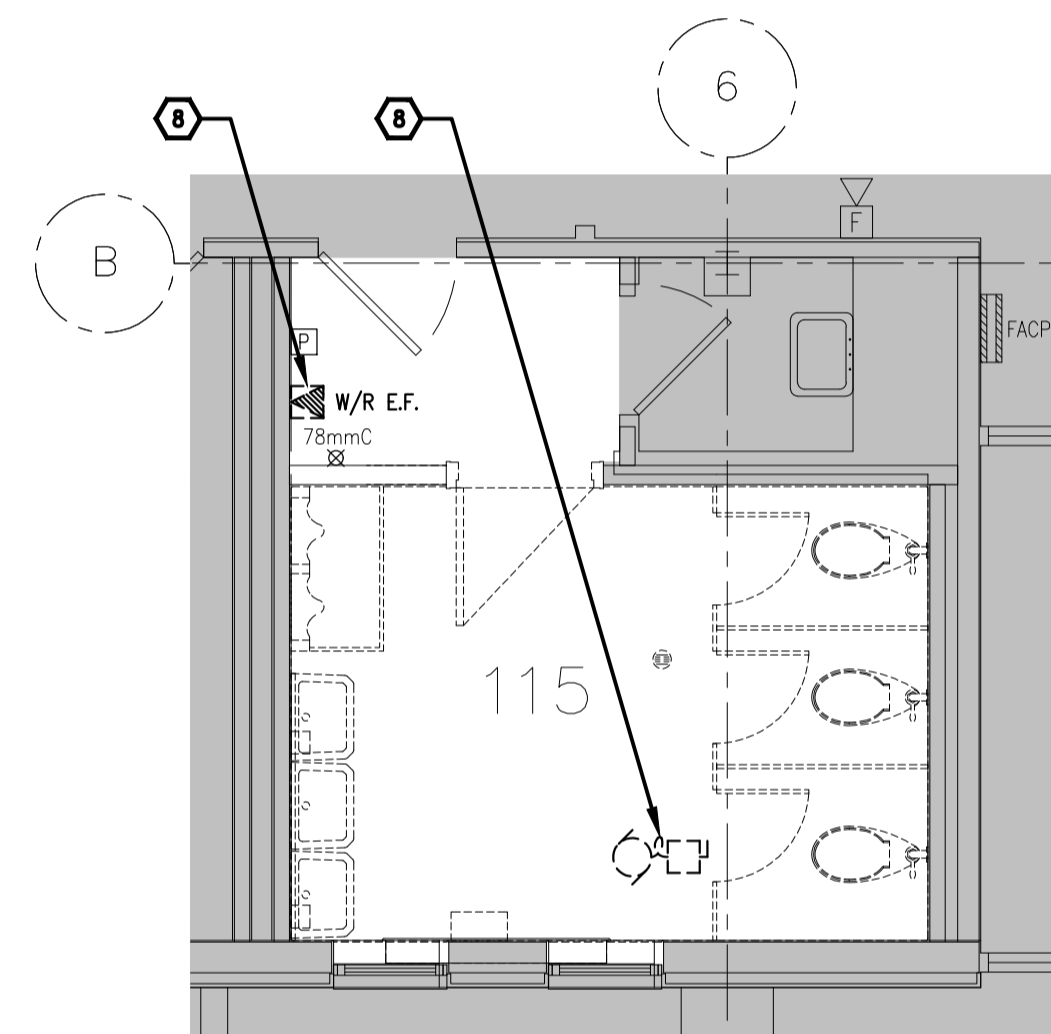
Contractor to verify all dimensions & conditions on site and immediately notify the engineer of all discrepancies.



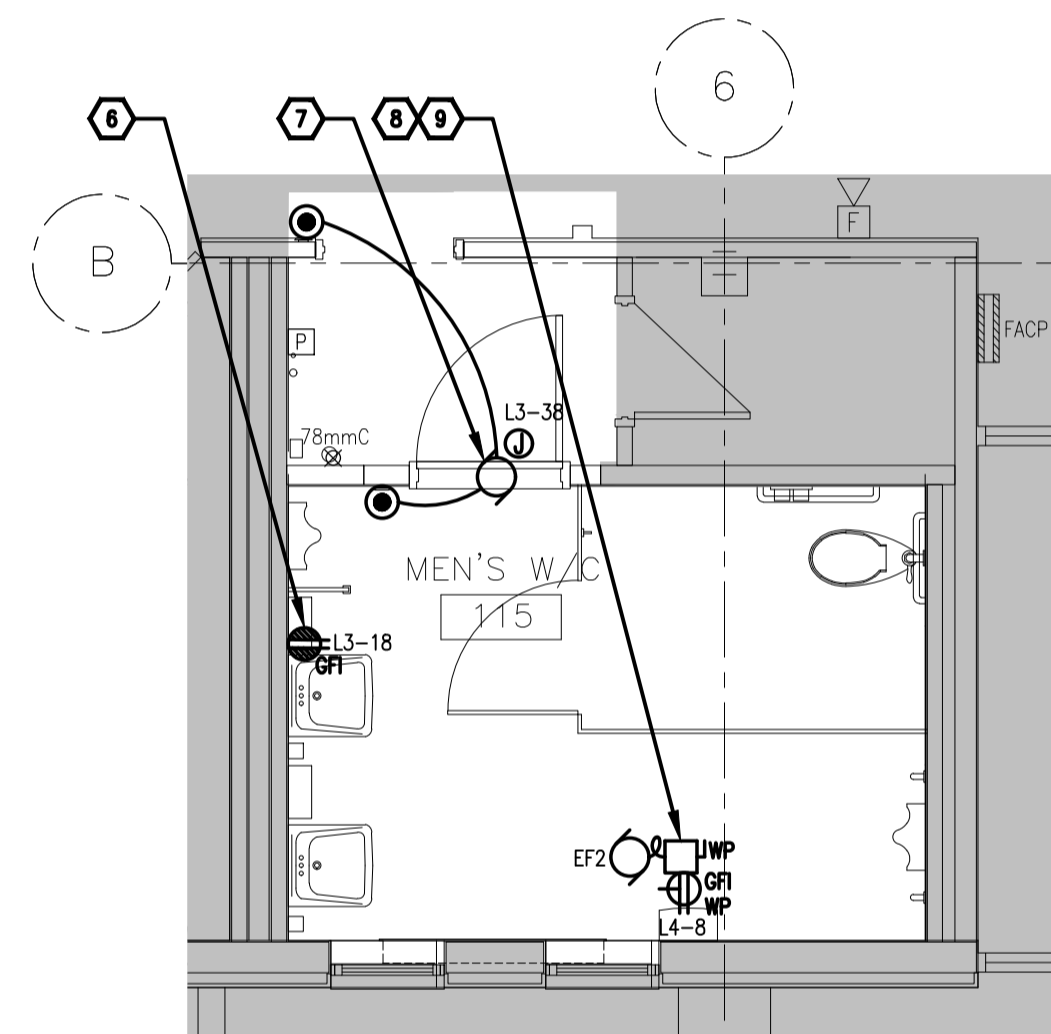
**1**  
**E2.1** 1:50  
**M59 - WASHROOM 115**  
**LIGHTING & FIRE ALARM DEMOLITION WORK**



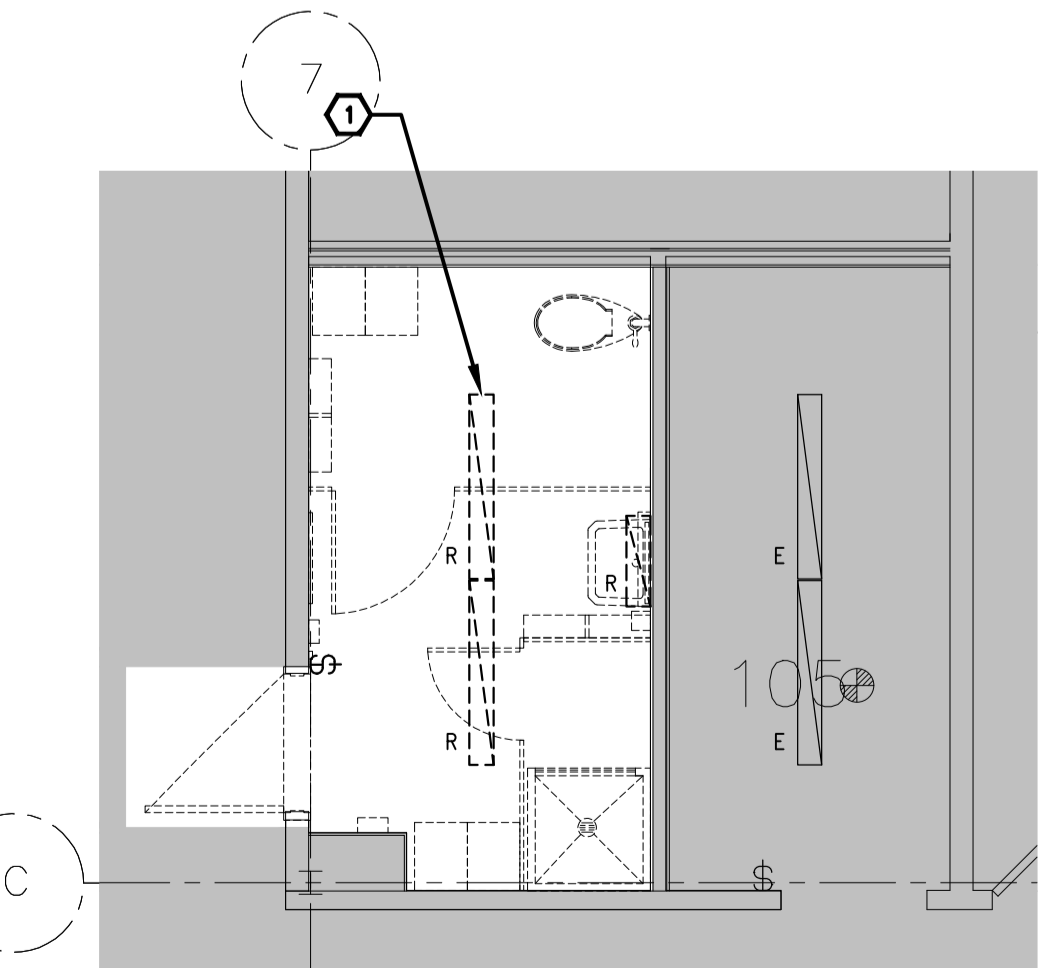
**2**  
**E2.1** 1:50  
**M59 - WASHROOM 115**  
**LIGHTING & FIRE ALARM NEW WORK**



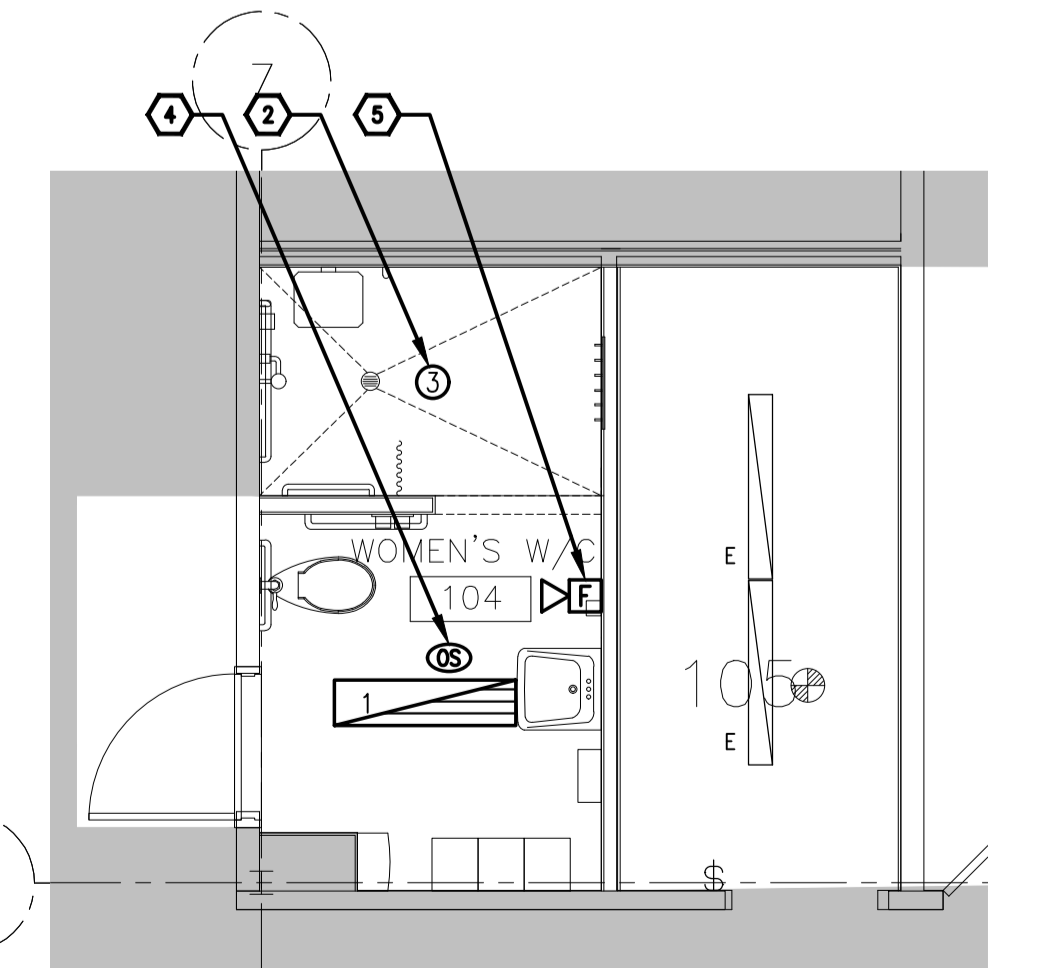
**3**  
**E2.1** 1:50  
**M59 - WASHROOM 115**  
**POWER AND SYSTEMS DEMOLITION WORK**



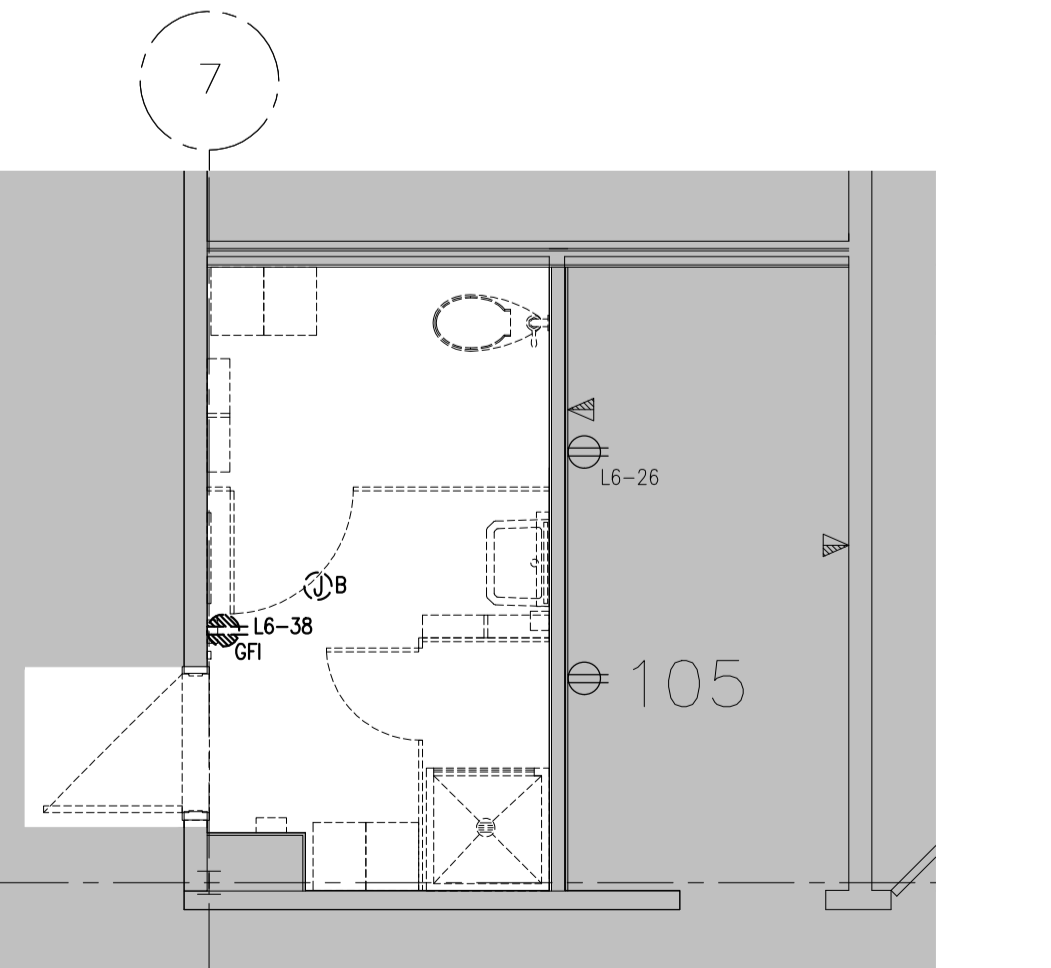
**4**  
**E2.1** 1:50  
**M59 - WASHROOM 115**  
**POWER & SYSTEMS NEW WORK**



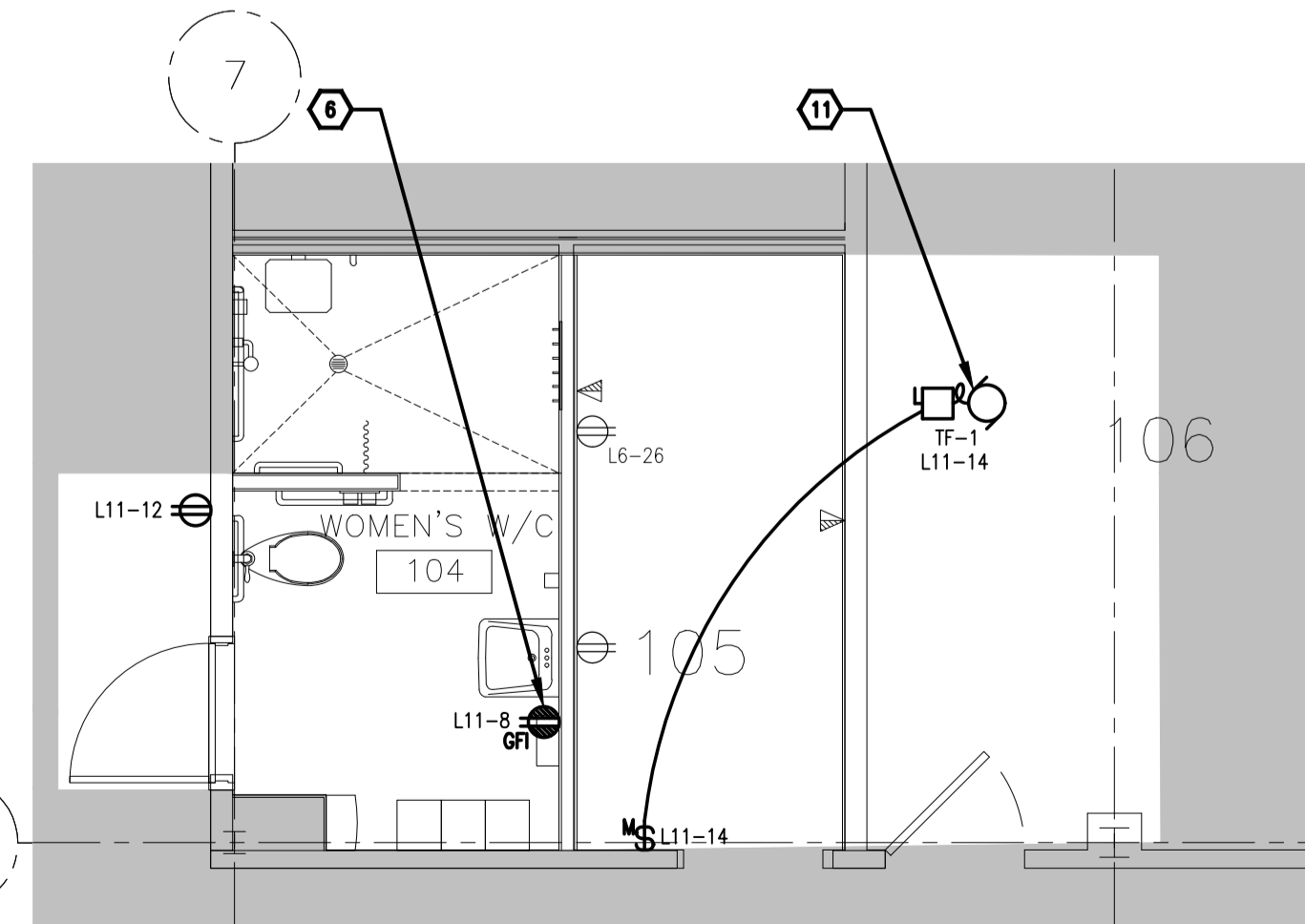
**5**  
**E2.1** 1:50  
**M59 - WASHROOM 104**  
**LIGHTING & FIRE ALARM DEMOLITION WORK**



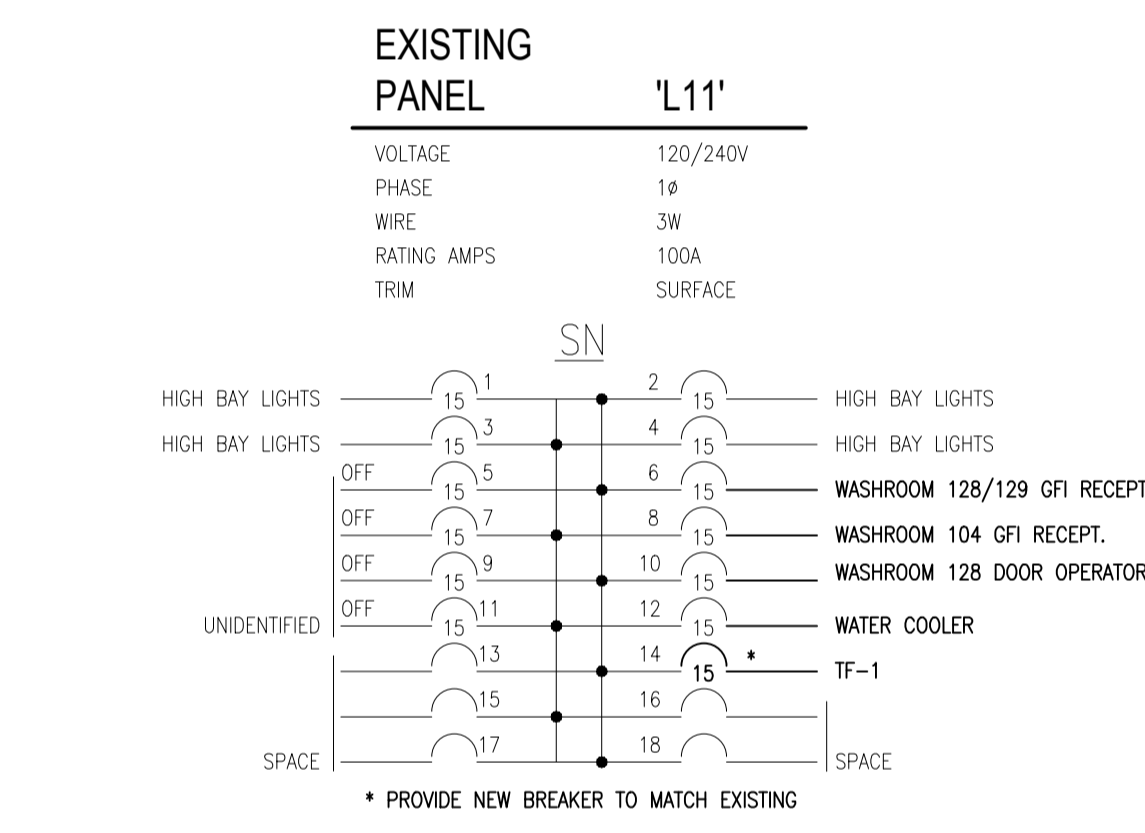
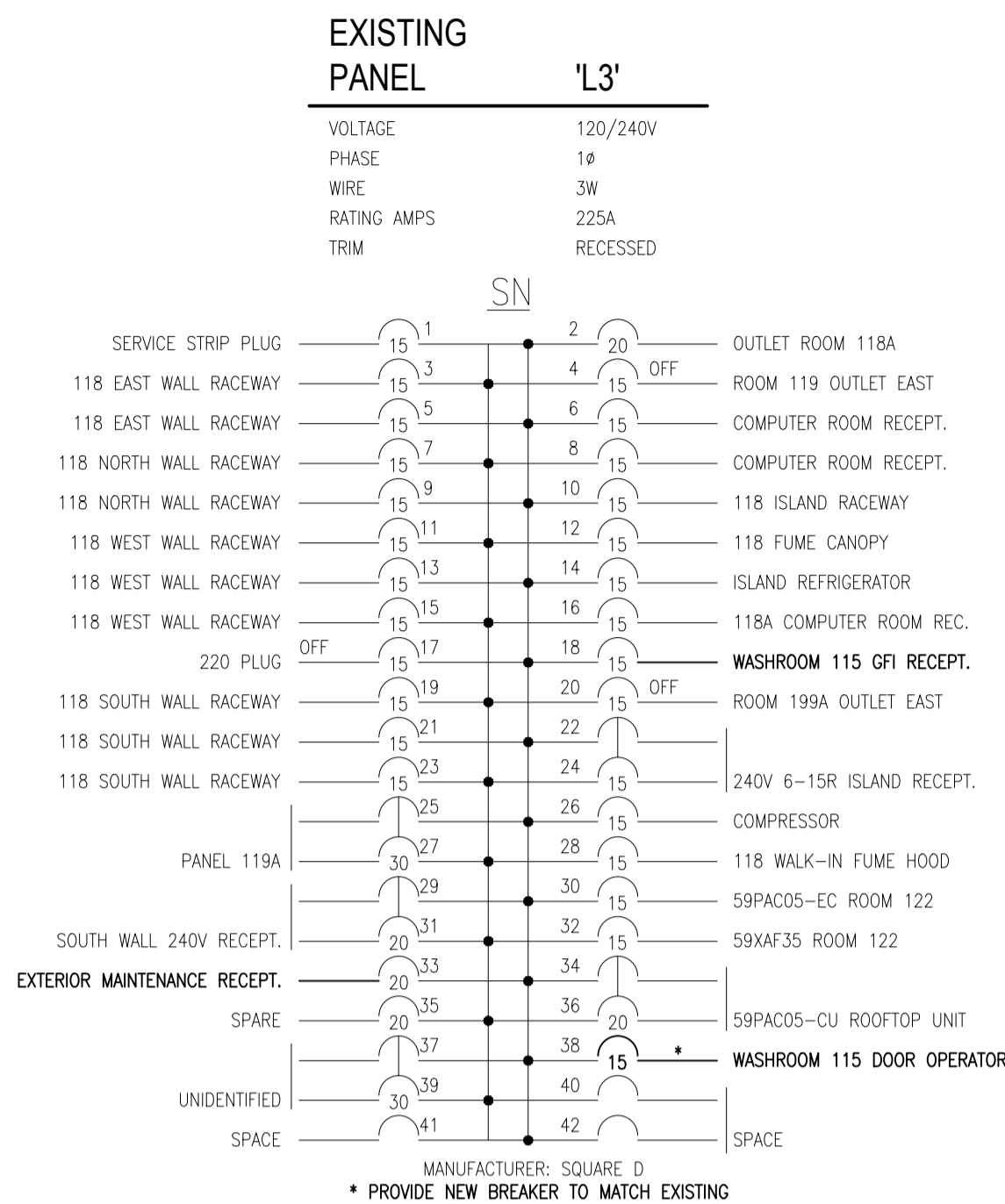
**6**  
**E2.1** 1:50  
**M59 - WASHROOM 104**  
**LIGHTING & FIRE ALARM NEW WORK**



**7**  
**E2.1** 1:50  
**M59 - WASHROOM 104**  
**POWER & SYSTEMS DEMOLITION WORK**



**8**  
**E2.1** 1:50  
**M59 - WASHROOM 104**  
**POWER & SYSTEMS NEW WORK**



- DRAWING NOTES**
- TYPICAL:** DISCONNECT AND REMOVE EXISTING ELECTRICAL DEVICE AS SHOWN. REMOVE CONDUIT AND WIRING BACK TO NEAREST CEILING JUNCTION BOX AND MAKE SAFE. RETAIN CIRCUIT FOR USE IN NEW LAYOUT.
  - TYPICAL:** PROVIDE NEW LIGHT FIXTURE, TYPE AS INDICATED. CONNECT TO EXISTING LIGHTING CIRCUIT FEEDING THE AREA. REFERENCE LIGHT FIXTURE SCHEDULE ON DRAWING E1.
  - TYPICAL:** CONNECT NEW FIXTURE TO NEAREST EMERGENCY CIRCUIT FEEDING THE AREA.
  - TYPICAL:** PROVIDE NEW LINE VOLTAGE, DUAL TECHNOLOGY, CEILING MOUNTED OCCUPANCY SENSOR AS INDICATED EQUAL TO DIVERSA WOR SERIES. CONNECT TO LOCAL FIXTURES.
  - TYPICAL:** PROVIDE NEW FIRE ALARM HORN AS INDICATED TO MATCH BASE BUILDING STANDARD. CONNECT TO EXISTING FIRE ALARM CIRCUIT FEEDING THE AREA.
  - TYPICAL:** PROVIDE NEW ELECTRICAL DEVICE AS INDICATED. CONNECT TO INDICATED CIRCUIT.
  - TYPICAL:** PROVIDE 15A, 120V CONNECTION TO POWERED DOOR OPERATOR SUPPLIED AND INSTALLED BY GENERAL TRADES. PROVIDE CONDUIT AND WIRING AS REQUIRED TO PUSHBUTTONS. COORDINATE EXACT LOCATION WITH ARCHITECTURAL DRAWINGS.
  - EXISTING:** 120V, 14, 3.7FLA EXHAUST FAN EF2. DISCONNECT EXISTING AND RECONNECT NEW TO EXISTING CIRCUITS. EXTEND CONDUIT AND WIRING AS REQUIRED. DISCONNECT AND REMOVE EXISTING WALL MOUNTED STARTER AS SHOWN. PROVIDE NEW DISCONNECT SWITCH AT UNIT. PROVIDE ALL INTERCONNECTIONS BETWEEN EXHAUST FAN, LIGHT FIXTURES, OCCUPANCY SENSORS AND POWER PACK AS PER MANUFACTURER'S RECOMMENDATION. PROGRAM OCCUPANCY SENSOR SUCH THAT FAN RUNS FOR 15 MINUTES AFTER ROOM BECOMES UNOCCUPIED.
  - PROVIDE:** NEW WEATHERPROOF 5-20RA GFI RECEPTACLE C/W METAL IN-USE COVER EQUAL TO HUBBELL MK3200/MK3300 MOUNTED ON UNIT ADJACENT TO DISCONNECT SWITCH AT 750mm A.F.F. CONNECT TO INDICATED CIRCUIT. REFERENCE ELECTRICAL PANEL SCHEDULE ON THIS DRAWING.
  - PROVIDE:** NEW LOW VOLTAGE, DUAL TECHNOLOGY, CEILING MOUNTED OCCUPANCY SENSOR AS INDICATED EQUAL TO DIVERSA WOR SERIES C/W CEILING MOUNTED DUAL RELAY POWER PACK AS SHOWN EQUAL TO DIVERSA WP-PP20-2P-D SERIES. PROVIDE ALL INTERCONNECTION BETWEEN OCCUPANCY SENSORS, POWER PACK EXHAUST FAN EF1 AND LIGHTING AS PER MANUFACTURER'S RECOMMENDATION. SET DELAY TIME TO 15 MINUTES. REFERENCE OCCUPANCY SENSOR WIRING DIAGRAM ON THIS DRAWING.
  - PROVIDE:** DISCONNECT SWITCH AND CONNECTION TO NEW 120V, 14, 3.4 FLA TRANSFER FAN TF-1. CONNECT TO INDICATED CIRCUIT. PROVIDE NEW WALL MOUNTED MANUAL MOTOR STARTER IN ROOM 105 AS INDICATED. TRANSFER FAN TO BE SUPPLIED AND INSTALLED BY MECHANICAL TRADES. COORDINATE EXACT LOCATION ON SITE, WITH MECHANICAL TRADES.

9		
8		
7		
6		
5		
4		
3		
2		
1	ISSUED FOR TENDER	2017/05/16

revisions	description	date

project		project	
<b>NRC BUILDINGS M2 &amp; M59 WASHROOMS RENOVATION - PHASE 2</b>			
1200 MONTREAL ROAD, OTTAWA			
drawing		dessin	
<b>M59 - GROUND FLOOR W/R 104 &amp; 115 LIGHTING &amp; POWER WORK</b>			
Designed By	A.G.	Conçu par	
Date	2016-04-13	(yyyy/mm/dd)	
Drawn By	E.D.	Dessiné par	
Date	2016-04-13	(yyyy/mm/dd)	
Reviewed By	R.B.	Examiné par	
Date	2016-04-13	(yyyy/mm/dd)	
Approved By	R.B.	Approuvé par	
Date	2016-04-13	(yyyy/mm/dd)	
Tender		Soumission	
Project Manager		Administrateur de projets	
W.O. no.		D.T. no.	
<b>5378 &amp; 5379</b>			
Drawing no.		No. du dessin	
<b>E2.1</b>			



Contractor to verify all dimensions & conditions on site and immediately notify the engineer of all discrepancies.

9		
8		
7		
6		
5		
4		
3		
2		
1	ISSUED FOR TENDER	2017/05/16
revisions	description	date

A	A detail no. no. du detail	A
C	B location drawing no. sur dessin no.	B
	C drawing no. dessin no.	C

project projet

**NRC BUILDINGS M2 & M59 WASHROOMS RENOVATION - PHASE 2**

1200 MONTREAL ROAD, OTTAWA

drawing dessin

**M59 - GROUND FLOOR W/R 128 & 129 LIGHTING & POWER WORK**

Designed By	A.G.	Conçu par
Date	2016-04-13	(yyyy/mm/dd)
Drawn By	E.D.	Dessiné par
Date	2016-04-13	(yyyy/mm/dd)
Reviewed By	R.B.	Examiné par
Date	2016-04-13	(yyyy/mm/dd)
Approved By	R.B.	Approuvé par
Date	2016-04-13	(yyyy/mm/dd)
Tender		Soumission

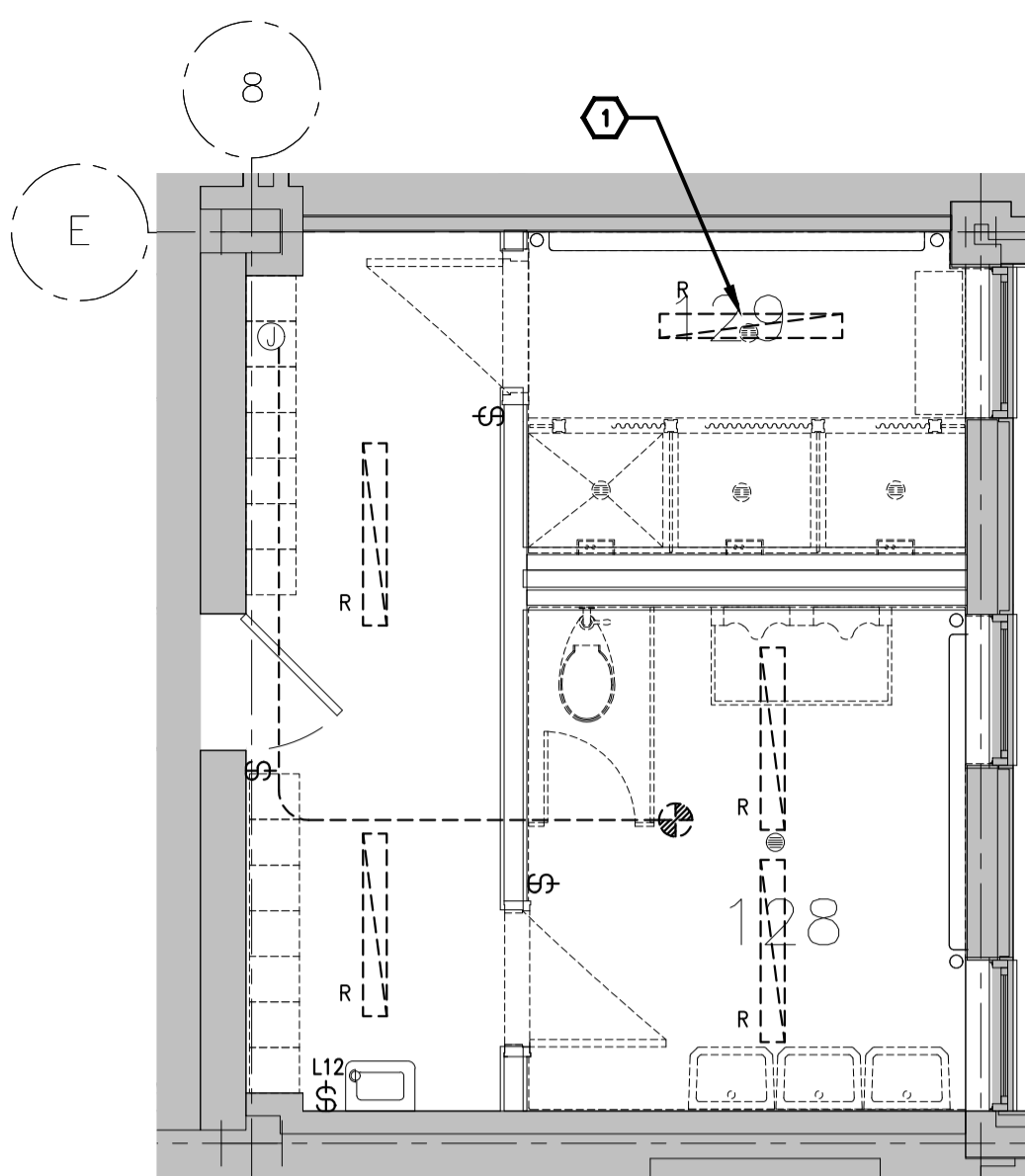
Project Manager Administrateur de projets  
 W.O. no. D.T. no.

5378 & 5379

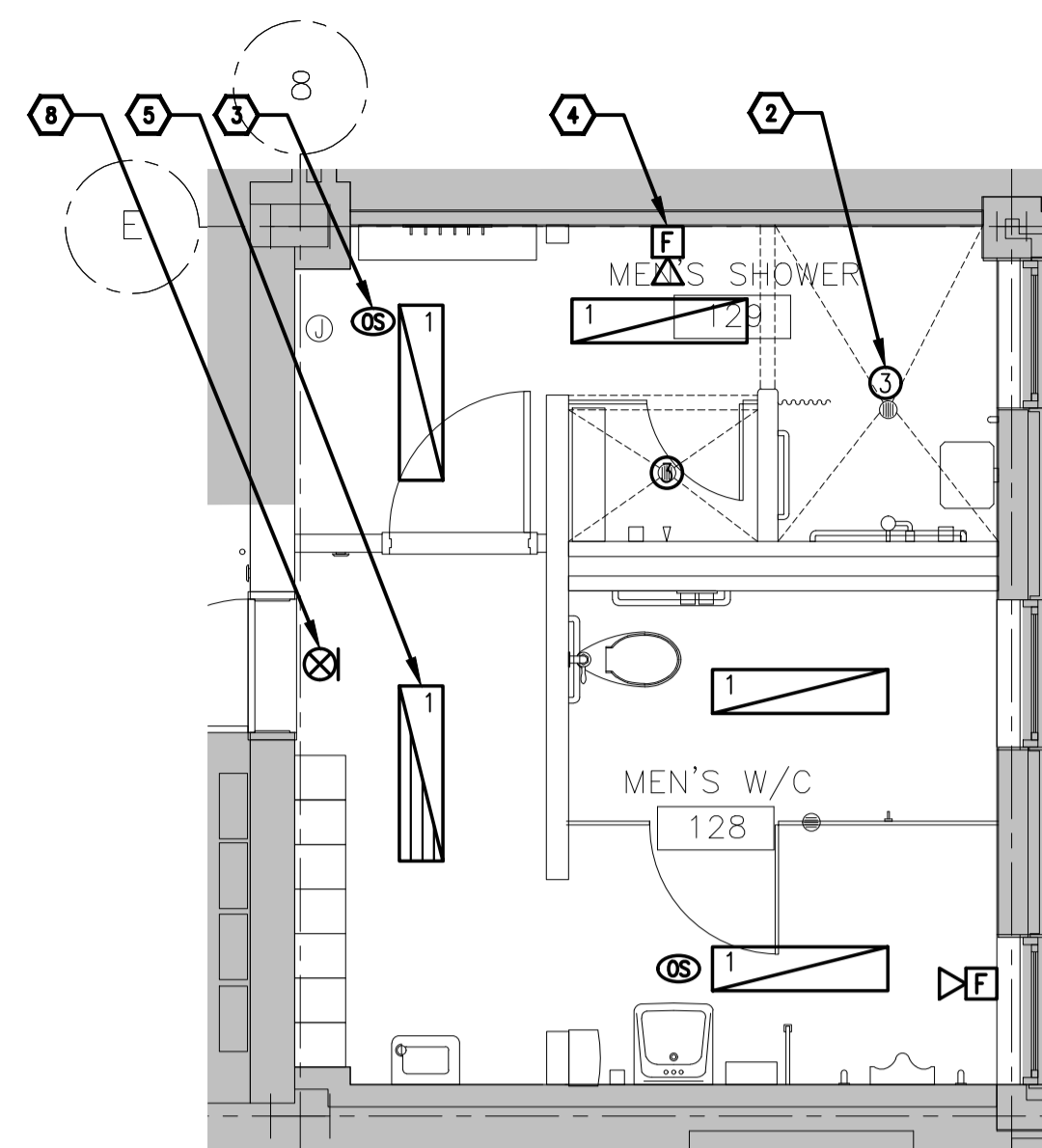
Drawing no. No. du dessin

E2.2

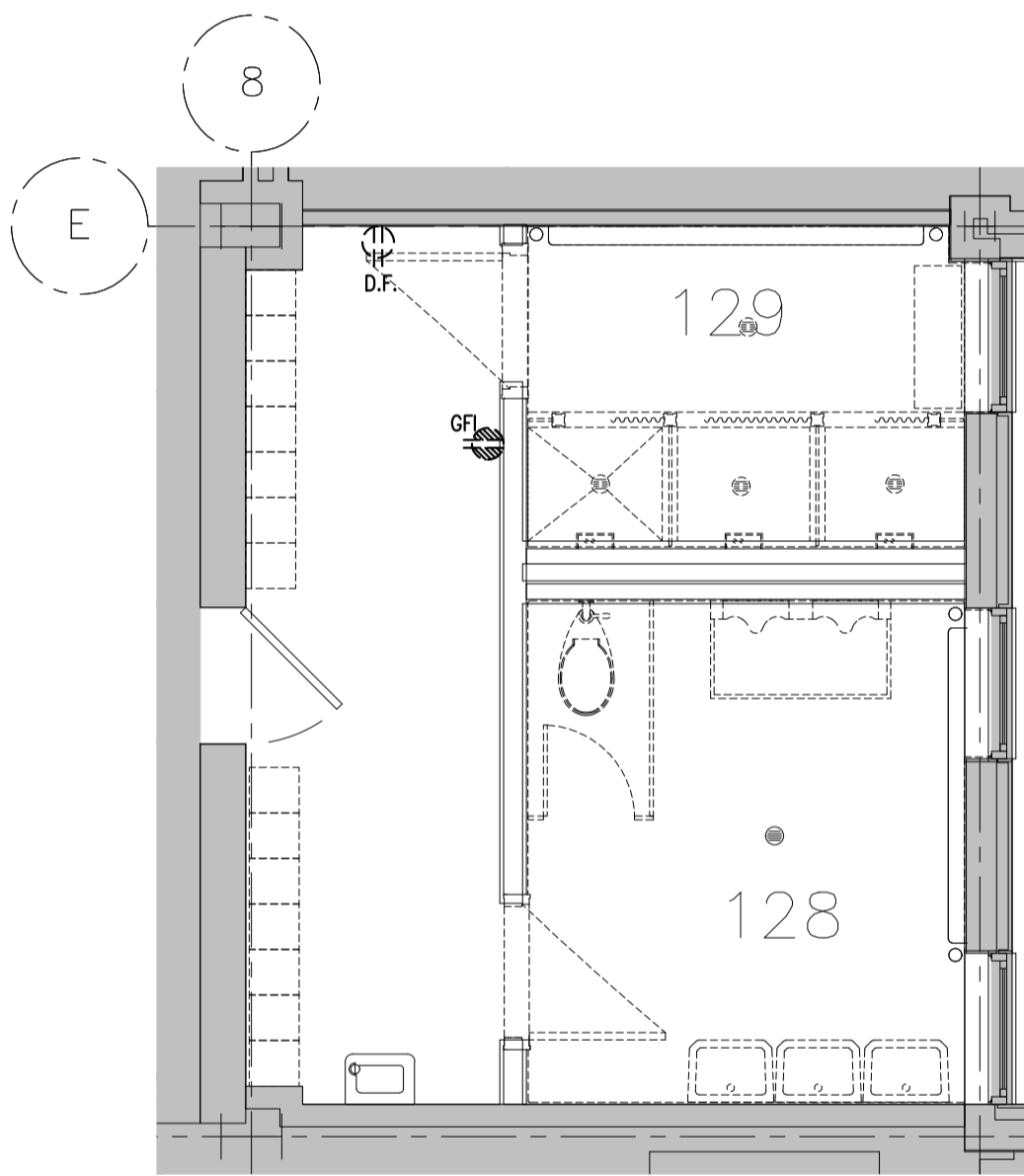
- DRAWING NOTES**
- 1 TYPICAL: DISCONNECT AND REMOVE EXISTING ELECTRICAL DEVICE AS SHOWN. REMOVE CONDUIT AND WIRING BACK TO NEAREST CEILING JUNCTION BOX AND MAKE SAFE. RETAIN CIRCUIT FOR USE IN NEW LAYOUT.
  - 2 TYPICAL: PROVIDE NEW LIGHT FIXTURE, TYPE AS INDICATED. CONNECT TO EXISTING LIGHTING CIRCUIT FEEDING THE AREA. REFERENCE LIGHT FIXTURE SCHEDULE ON DRAWING E1.
  - 3 TYPICAL: PROVIDE NEW LOW VOLTAGE, DUAL TECHNOLOGY, CEILING MOUNTED OCCUPANCY SENSOR AS INDICATED EQUAL TO DIVERSA WOR SERIES C/W CEILING MOUNTED POWER PACK AS SHOWN EQUAL TO DIVERSA WP-PP20-D SERIES. PROVIDE INTERCONNECTIONS BETWEEN OCCUPANCY SENSORS, POWER PACK AND LIGHTING AS PER MANUFACTURER'S RECOMMENDATION.
  - 4 TYPICAL: PROVIDE NEW FIRE ALARM HORN AS INDICATED TO MATCH BASE BUILDING STANDARD. CONNECT TO EXISTING FIRE ALARM CIRCUIT FEEDING THE AREA.
  - 5 CONNECT NEW FIXTURE TO NEAREST EMERGENCY CIRCUIT FEEDING THE AREA.
  - 6 TYPICAL: PROVIDE NEW ELECTRICAL DEVICE AS INDICATED. CONNECT TO INDICATED CIRCUIT.
  - 7 PROVIDE 15A, 120V CONNECTION TO POWERED DOOR OPERATOR SUPPLIED AND INSTALLED BY GENERAL TRADES. PROVIDE CONDUIT AND WIRING AS REQUIRED TO PUSHBUTTONS. COORDINATE EXACT LOCATION WITH ARCHITECTURAL DRAWINGS.
  - 8 PROVIDE NEW PICTOGRAM "RUNNING MAN" TYPE EXIT SIGN AS INDICATED. CONNECT TO EXISTING EMERGENCY CIRCUIT FEEDING THE AREA.



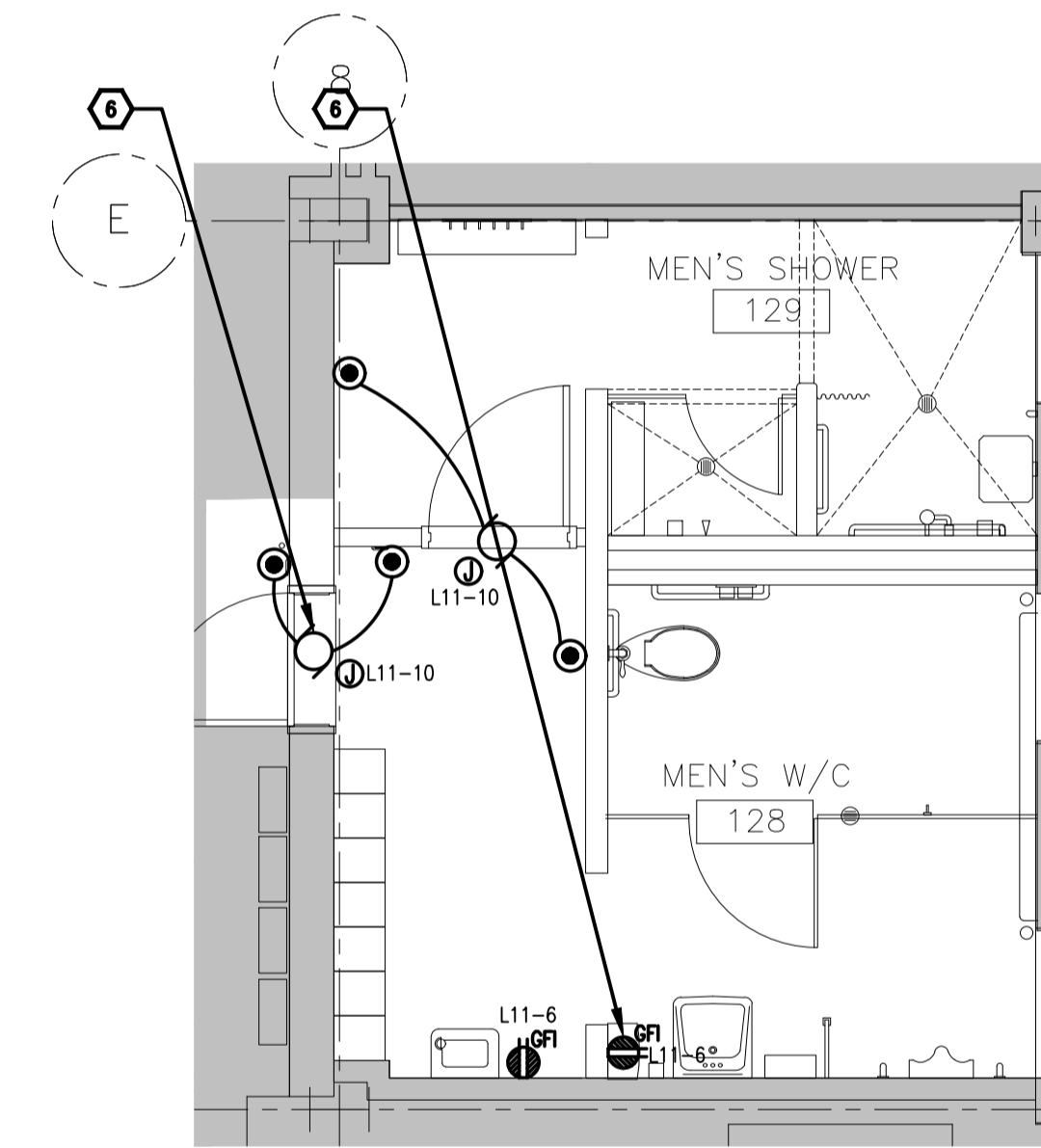
M59 - WASHROOM 128/129  
 LIGHTING & FIRE ALARM DEMOLITION WORK  
 1 E2.2 1:50



M59 - WASHROOM 128/129  
 LIGHTING & FIRE ALARM NEW WORK  
 2 E2.2 1:50



M59 - WASHROOM 128/129  
 POWER & SYSTEMS DEMOLITION WORK  
 3 E2.2 1:50



M59 - WASHROOM 128/129  
 POWER & SYSTEMS NEW WORK  
 4 E2.2 1:50