



**RETURN BIDS TO:**

**RETOURNER LES SOUMISSIONS À:**

**Bid Receiving - PWGSC / Réception des soumissions  
- TPSGC**

**11 Laurier St. / 11, rue Laurier**

**Place du Portage, Phase III**

**Core 0B2 / Noyau 0B2**

**Gatineau, Québec K1A 0S5**

**Bid Fax: (819) 997-9776**

**SOLICITATION AMENDMENT  
MODIFICATION DE L'INVITATION**

The referenced document is hereby revised; unless otherwise indicated, all other terms and conditions of the Solicitation remain the same.

Ce document est par la présente révisé; sauf indication contraire, les modalités de l'invitation demeurent les mêmes.

**Comments - Commentaires**

**Vendor/Firm Name and Address**

**Raison sociale et adresse du  
fournisseur/de l'entrepreneur**

**Issuing Office - Bureau de distribution**

Electrical & Electronics Products Division  
11 Laurier St./11, rue Laurier  
7B3, Place du Portage, Phase III  
Gatineau, Québec K1A 0S5

<b>Title - Sujet</b> CCTV installation at Grierson Insti	
<b>Solicitation No. - N° de l'invitation</b> 21120-172847/A	<b>Amendment No. - N° modif.</b> 002
<b>Client Reference No. - N° de référence du client</b> 21120-17-2532847	<b>Date</b> 2017-06-02
<b>GETS Reference No. - N° de référence de SEAG</b> PW-\$\$HN-461-72848	
<b>File No. - N° de dossier</b> hn461.21120-172847	<b>CCC No./N° CCC - FMS No./N° VME</b>
<b>Solicitation Closes - L'invitation prend fin at - à 02:00 PM on - le 2017-06-28</b>	<b>Time Zone</b> Fuseau horaire Eastern Daylight Saving Time EDT
<b>F.O.B. - F.A.B.</b> <b>Plant-Usine:</b> <input type="checkbox"/> <b>Destination:</b> <input type="checkbox"/> <b>Other-Autre:</b> <input type="checkbox"/>	
<b>Address Enquiries to: - Adresser toutes questions à:</b> Hallman, Patti	<b>Buyer Id - Id de l'acheteur</b> hn461
<b>Telephone No. - N° de téléphone</b> (819) 420-0339 ( )	<b>FAX No. - N° de FAX</b> ( ) -
<b>Destination - of Goods, Services, and Construction:</b> <b>Destination - des biens, services et construction:</b>	

**Instructions: See Herein**

**Instructions: Voir aux présentes**

<b>Delivery Required - Livraison exigée</b>	<b>Delivery Offered - Livraison proposée</b>
<b>Vendor/Firm Name and Address</b> <b>Raison sociale et adresse du fournisseur/de l'entrepreneur</b>	
<b>Telephone No. - N° de téléphone</b> <b>Facsimile No. - N° de télécopieur</b>	
<b>Name and title of person authorized to sign on behalf of Vendor/Firm</b> <b>(type or print)</b> <b>Nom et titre de la personne autorisée à signer au nom du fournisseur/ de l'entrepreneur (taper ou écrire en caractères d'imprimerie)</b>	
<b>Signature</b>	<b>Date</b>

Solicitation No. - N° de l'invitation  
21120-172847/A  
Client Ref. No. - N° de réf. du client  
21120-172847

Amd. No. - N° de la modif.  
002  
File No. - N° du dossier  
hn361.21120-172847

Buyer ID - Id de l'acheteur  
hn361  
CCC No./N° CCC - FMS No./N° VME

---

*La modification 002 est émise pour fournir aux soumissionnaires les documents suivants:*

- 1) Dessins
- 2) Compte rendu de la réunion de la visite obligatoire qui a eu lieu le 30 mai 2017

**Tous les autres termes et conditions demeurent inchangées.**

## Meeting Minutes

**Project:** CCTV CAMERAS

**Solicitation Number:** 21120-174683

**Date:** May 30, 2017

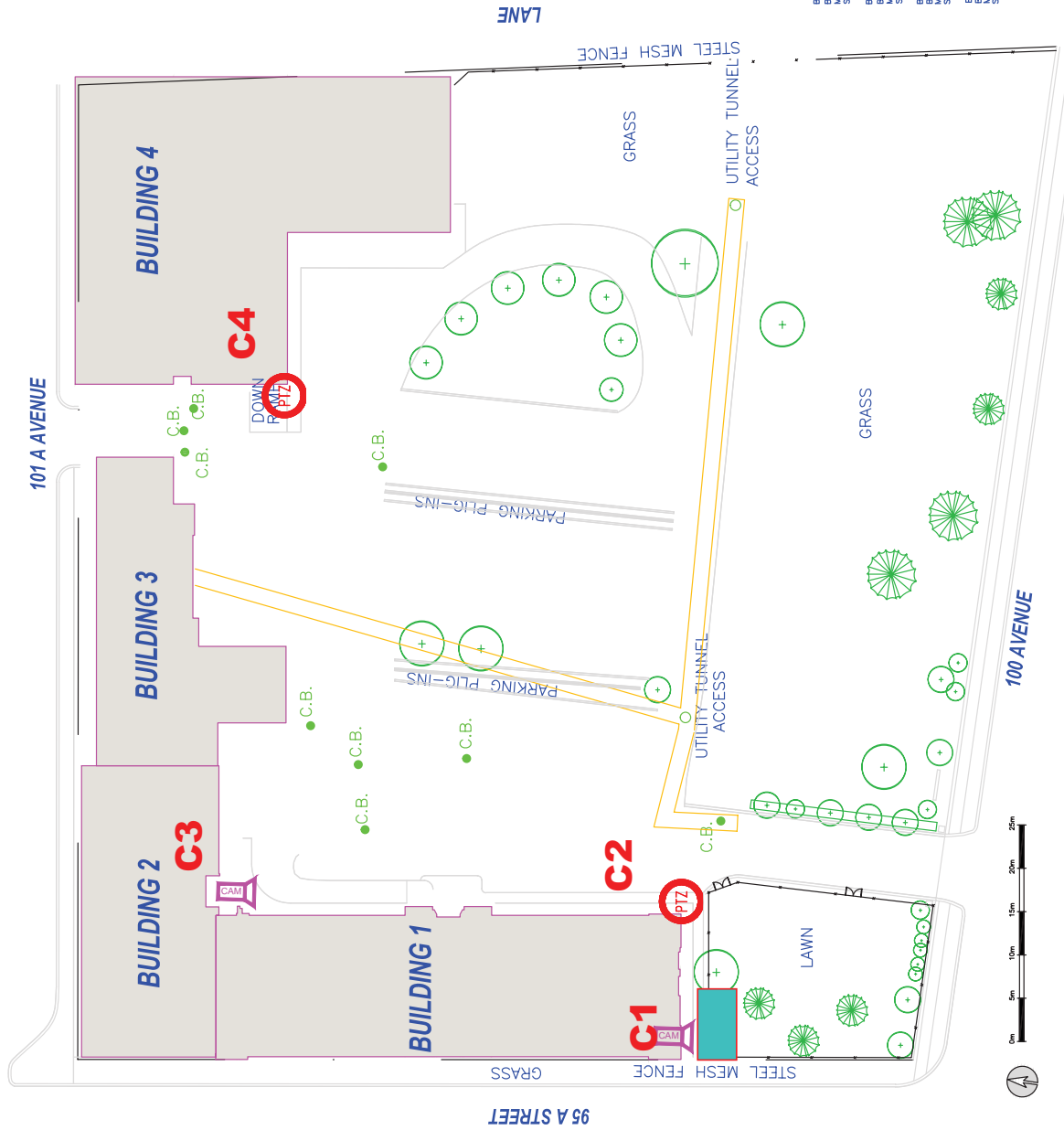
**Location:** Grierson Institution CCTV

### **General:**

1. Introduction, project overview (STR) – PWGSC is the Contract Authority – CSC is the Technical Authority – any questions are to be submitted to PWGSC in writing.
2. In the gymnasium, the contractor shall provide a 9 megapixel IP camera to include:
  - 360° monitoring with a wide variety of transmission modes : Panorama,
  - Double Panorama, Quad PTZ, Single PTZ, and Quad streams (H.264)
  - 9 Megapixel images up to 15 fps.
  - Multiple H.264 (High profile) streams and JPEG streams ensure simultaneous real time monitoring and high resolution recording
  - The camera will provide the following displays
  - 9 Megapixel Fisheye Mode
  - Double Panorama mode
  - Panorama mode
  - Quad PTZ mode
  - Single PTZ mode
3. The contractor shall provide network storage capabilities for all cameras for 30 days.
4. Contractors must be Genetec certified to install this network.
5. The contractor is required to provide all camera licenses for recording and live viewing of all cameras.
6. The contractors were informed that after award of contract, that there was a requirement for a start up meeting at each institution.
7. The institution shall provide a security brief to all contractor employees prior to working inside the institution. The time and date shall be determined at the start-up meeting.
8. Site clearances are required for all contractors – request 2 weeks in advance.
9. Commissionaires are not required.
10. Hours of work are generally 07:30 - 11:30 and 12:30 - 16:30 hours Monday – Friday. Extended work hours may be acceptable providing there are no operational issues and sufficient notice. Weekend work may be acceptable, however, Institution to advise at start-up meeting.
11. No sharing of technical information with inmates.

12. The contractor is responsible to remove redundant material from site.
13. The contractor shall abide by all Health and Safety regulations and guidelines, of which includes, fall arrest.
14. The contractor shall install rigid conduit in inmate accessible areas.
15. The institution will provide suitable storage location for tools and equipment. The contractor shall provide lock boxes for their tools.
16. Cell phones cannot be used within Grierson Institution but may be used in other locations of the facility. The institution has offered the use of their maintenance radios, if required.
17. The institution has offered the use of their man-lift. The contractor is required to insure that all their staff possess the necessary certifications to operate this equipment.
18. Information drawings were provided for all contractors as part of the site tour. PWGSC will be providing revised drawings ( Project 21120-174683 - Grierson CCTV)
19. Site Tour conducted.

End of Meeting



## OVERALL SITE PLAN

C1 Field Of View

Notes: Blind spot  
near air conditioner  
by exit stairway

A. field no.	A	B	C
B. location drawing no.	A	B	C
C. drawing no.	A	B	C

INSTITUTION  
GREERSON CENTER  
EDMONTON, AB

DESCRIPTION  
OVERALL SITE LAYOUT

SCALE  
1:500

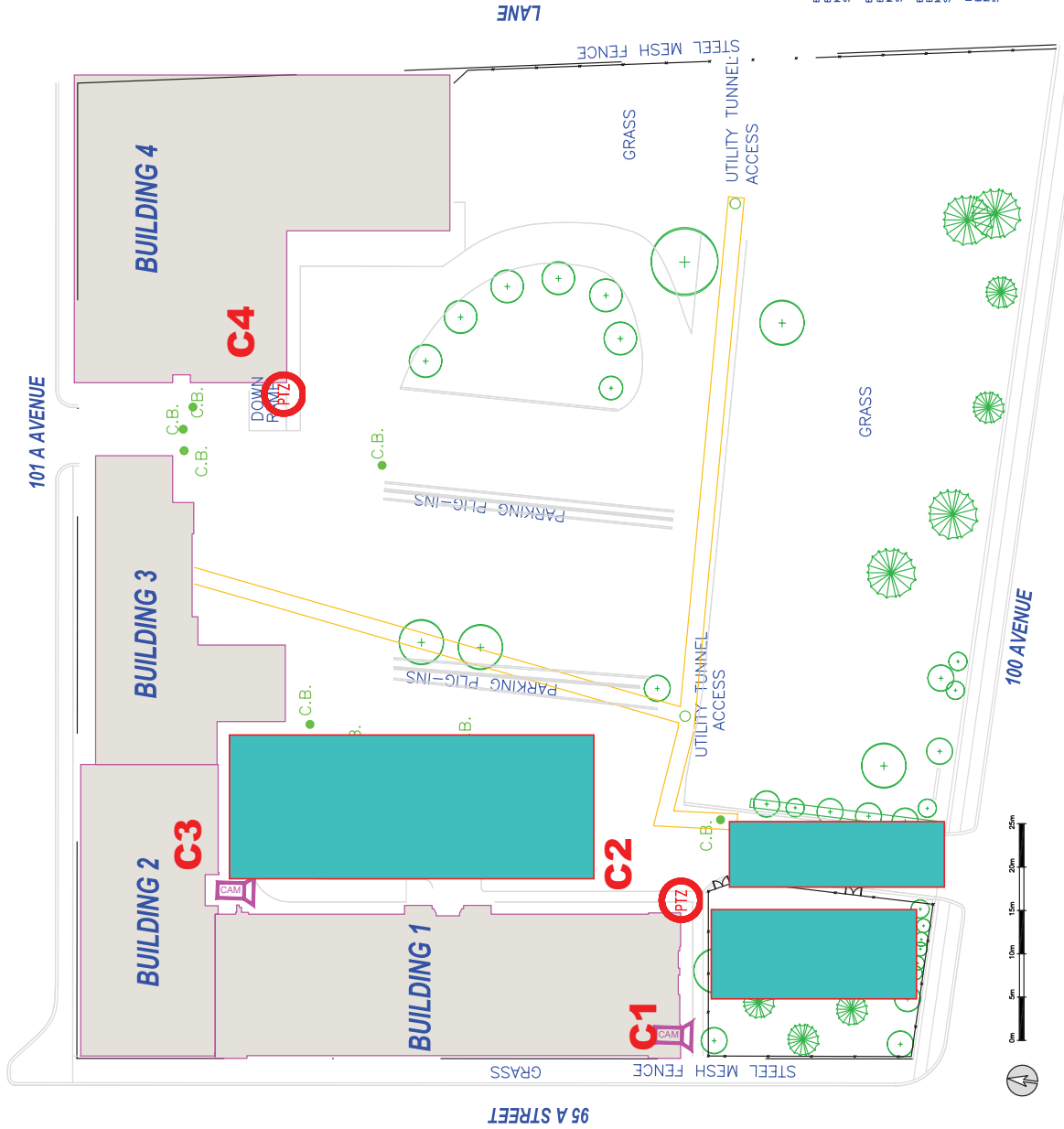
E1

BUILDING No. 1  
BASEMENT FLOOR - GREERSON CENTER  
MAIN FLOOR - PAROLE OFFICES AND ADMINISTRATION  
SECOND FLOOR - PAROLE OFFICES AND ADMINISTRATION

BUILDING No. 2  
BASEMENT FLOOR - TUNNELS  
MAIN FLOOR - CENTRAL REGISTRY WEST END  
SECOND FLOOR - GYMNASIUM

BUILDING No. 3  
BASEMENT FLOOR - TUNNELS  
MAIN FLOOR - HEALTH CARE PROGRAMS ROOMS, PSYCHOLOGY  
SECOND FLOOR - PAROLE AND PROGRAMS OFFICES

BUILDING No. 4  
BASEMENT FLOOR - MEN AND INMATE MESS  
SECOND FLOOR - STAN DANIELS HEALING CENTRE



**OVERALL  
SITE PLAN**  
C2 Field Of View

**Notes: A PTZ will  
cover, Visits, Rear  
Entrance Gate and  
front of building  
including rear  
entrance/exit**

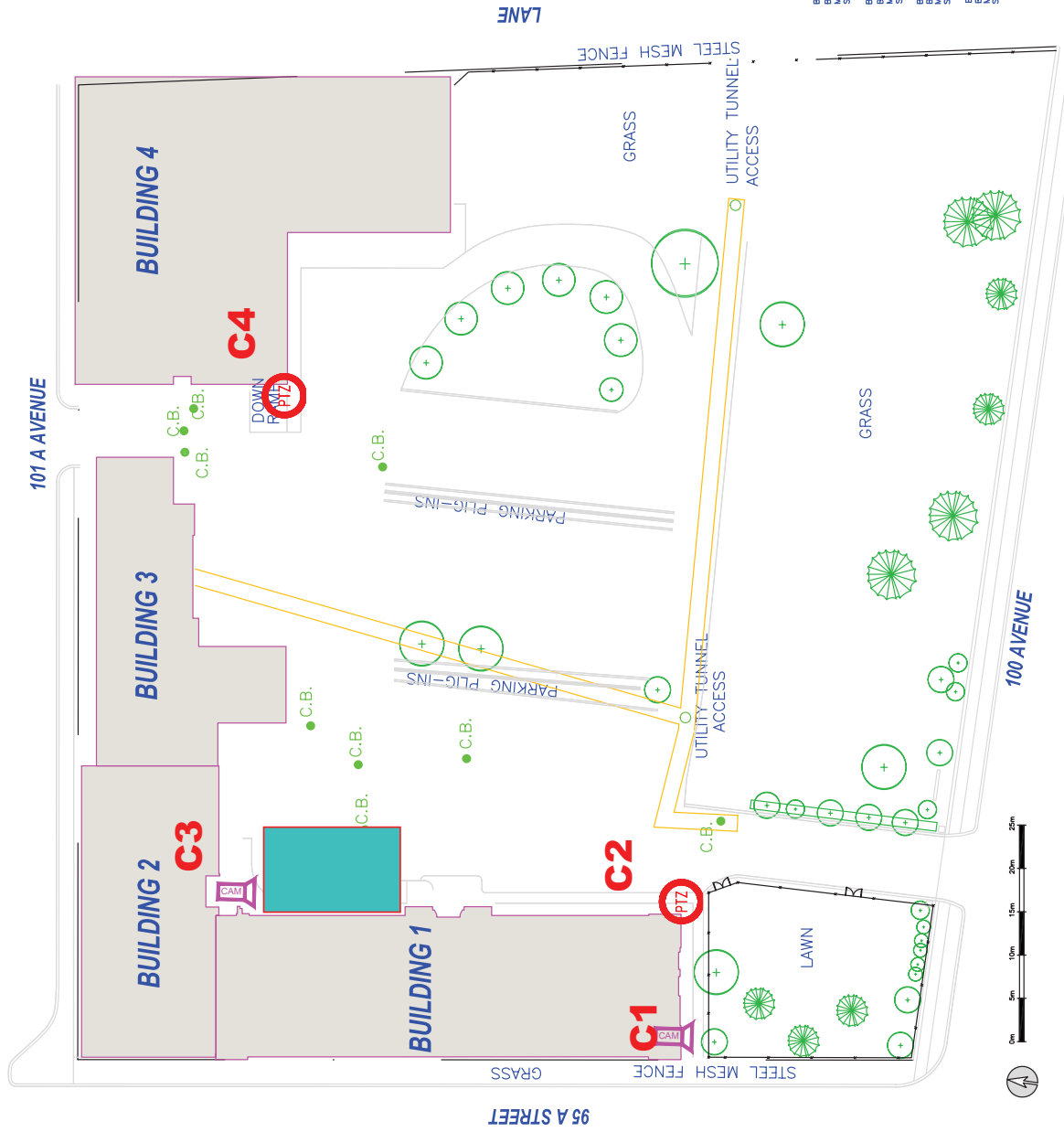


**INSTITUTION**  
GREIRSON CENTER  
EDMONTON, AB

**DESCRIPTION**  
**OVERALL SITE LAYOUT**

**SCALE**  
1:500

**E2**



# OVERALL SITE PLAN

## C3 Field of View

Notes: Covers front  
entrance of  
institution

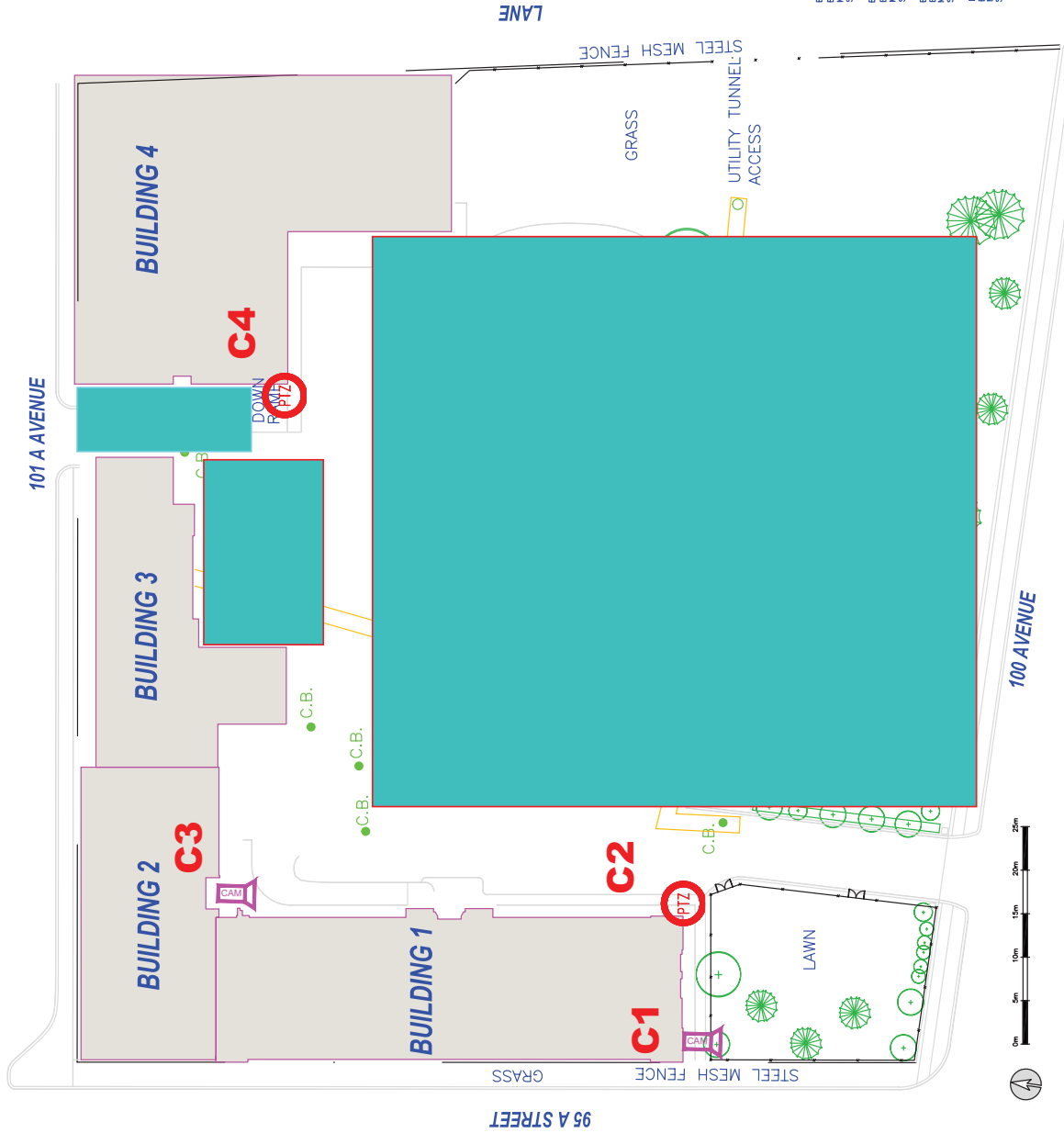
A. field no.	A	B	C
B. location drawing no.	A	B	C
C. drawing no.	A	B	C

INSTITUTION  
GREERSON CENTER  
EDMONTON, AB

DESCRIPTION  
OVERALL SITE LAYOUT

SCALE  
1:500

E3



# OVERALL SITE PLAN C4 Field Of View

Notes: covers parking  
lot and sports field  
(od parade grounds),  
entrance to Health  
Care and main  
entrance off 101 Ave.



- BUILDING No. 1  
BASEMENT FLOOR - GREERSON CENTRE  
MAIN FLOOR - PAROLE OFFICES AND ADMINISTRATION  
SECOND FLOOR - PAROLE OFFICES AND ADMINISTRATION
- BUILDING No. 2  
BASEMENT FLOOR - TUNNELS  
MAIN FLOOR - CENTRAL REGISTRY WEST END  
SECOND FLOOR - GYMNASIUM
- BUILDING No. 3  
BASEMENT FLOOR - TUNNELS  
MAIN FLOOR - HEALTH CARE PROGRAMS ROOMS, PSYCHOLOGY  
SECOND FLOOR - PAROLE AND PROGRAMS OFFICES
- BUILDING No. 4  
BASEMENT FLOOR - MEN AND INMATE MESS  
SECOND FLOOR - STAN DANIELS HEALING CENTRE

INSTITUTION  
GREERSON CENTER  
EDMONTON, AB

DESCRIPTION  
OVERALL SITE LAYOUT

SCALE  
1:500

E4



# CCTV

 = Fixed Camera

Notes: C5 covers exit door area

 = Monitor

INSTITUTION  
GRIERSON CENTER  
EDMONTON, ALBERTA

TAG # 540-04 BUILDING # 1

BUILDING NAME  
GRIERSON & STAN DANIELS  
CENTRE

FLOOR  
GROUND

AREA  
AS SHOWN

SCALE 1:225

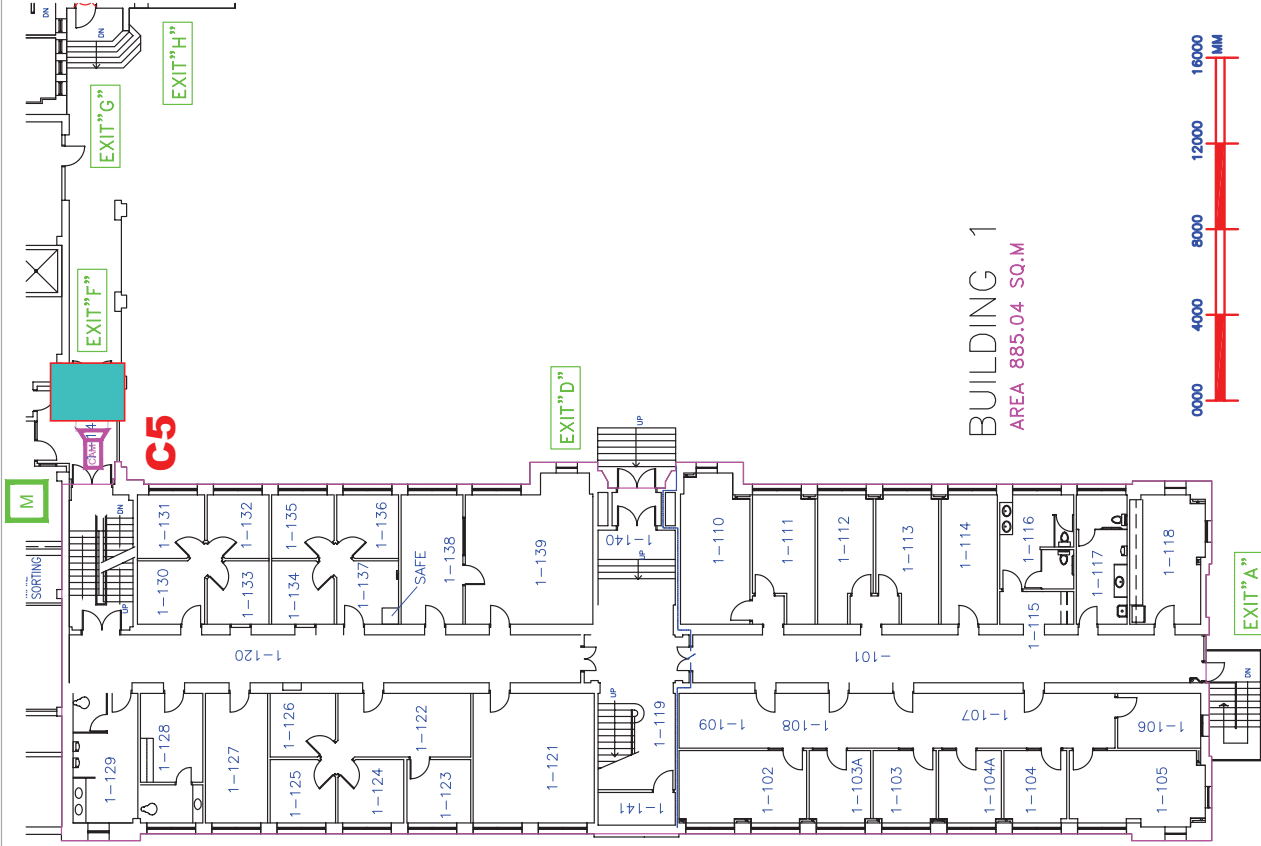
DATE: \_\_\_\_\_

APPROVED BY: \_\_\_\_\_

E5

## ROOM LEGEND BUILDING 1

- 1-101 CORRIDOR
- 1-102 OFFICE
- 1-103 OFFICE
- 1-104 OFFICE
- 1-105 OFFICE
- 1-106 STORAGE
- 1-107 FILING
- 1-108 WAITING
- 1-109 SECRETARY
- 1-110 BOARDROOM
- 1-111 OFFICE
- 1-112 OFFICE
- 1-113 OFFICE
- 1-114 OFFICE
- 1-115 ENTRY
- 1-116 WOMEN
- 1-117 MEN
- 1-118 LUNCHROOM
- 1-119 HALL
- 1-120 CORRIDOR
- 1-121 PROGRAM ROOM
- 1-122 SUPPORT OFFICE
- 1-123 PAROLE OFFICE
- 1-124 PAROLE OFFICE
- 1-125 PAROLE OFFICE
- 1-126 PAROLE OFFICE
- 1-127 SECTION SUPERVISOR
- 1-128 WASHROOM
- 1-129 WASHROOM
- 1-130 GENERAL OFFICE
- 1-131 PAROLE OFFICE
- 1-132 PAROLE OFFICE
- 1-133 PAROLE OFFICE
- 1-134 PAROLE OFFICE
- 1-135 PAROLE OFFICE
- 1-136 PAROLE OFFICE
- 1-137 GENERAL OFFICE
- 1-138 PSYCHOLOGIST OFFICE
- 1-139 PROGRAM ROOM
- 1-140 VESTIBULE
- 1-141 STORAGE
- 1-142 STAIRWAY



**CCTV**

**= Monitor**

**= Camera**

**Notes: Monitor and control of all cameras. Video retrieval from CM office.**

INSTITUTION \_\_\_\_\_

**GRIERSON CENTER  
EDMONTON, ALBERTA**

TAG# — BUILDING# —

540-04 1

BUILDING NAME \_\_\_\_\_

**GRIERSON & STAN DANIELS**  
**CENTRE**

FLOOR\_\_\_\_\_

## BASEMENT

AREA\_\_\_\_\_

AS SHOWN

SCALE  
1:225

1000000

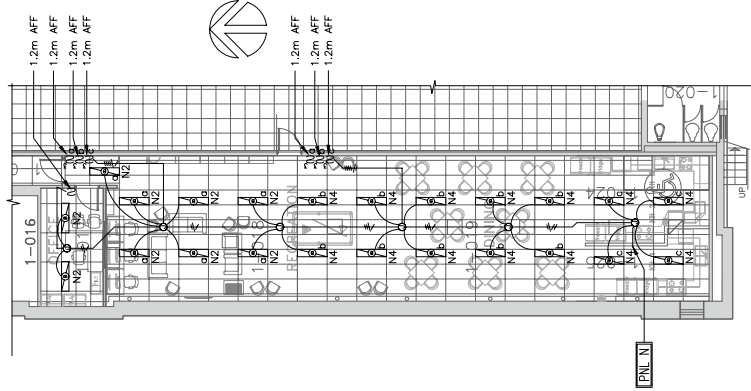
DATE: \_\_\_\_\_

[illegible]

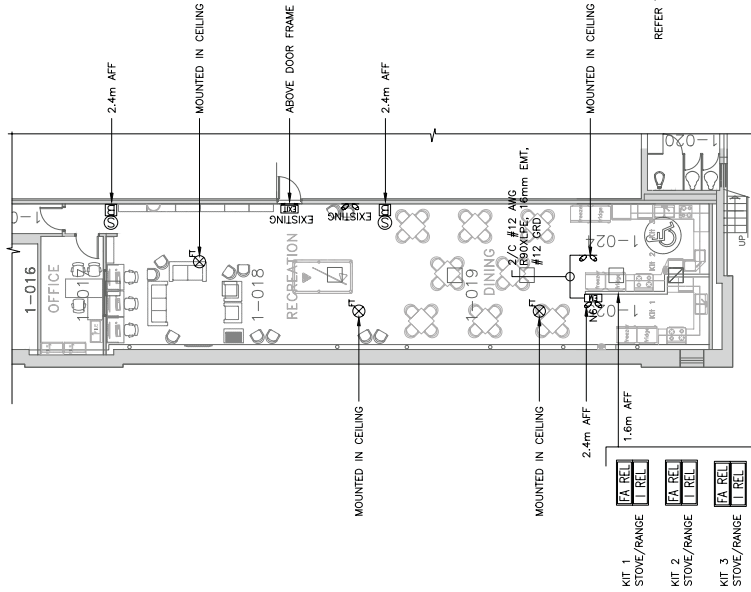
APPROVED BY: \_\_\_\_\_

**SEE**

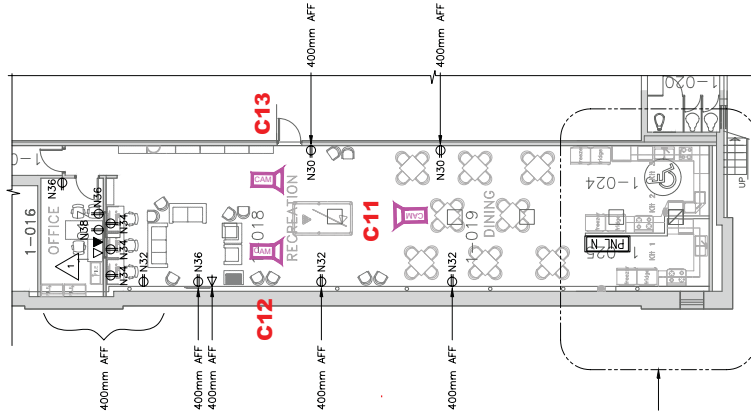




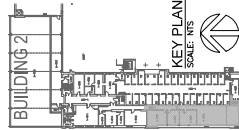
1 LIGHTING PLAN  
SCALE: 1:100



2 LIFE SAFETY SYSTEMS PLAN  
SCALE: 1:100



3 POWER, TEL. & DATA PLAN  
SCALE: 1:100



**CCTV**

**Notes: Minimum requirements to cover Kitchen and Common Room / Recreation Area Might be able to cover with a 360 camera, however, based on ceiling height**

Revisions/Modifications	Description/Comments	By/Date
4	ISSUED FOR TENDER	
3	100% REVIEW PRE-TENDER	
2	80% REVIEW SET	
1	50% REVIEW SET	
0	DESIGN COMPLETION	

**CORRECTIONAL SERVICES CANADA**  
**GRIERSON CENTRE**  
 EDMONTON, ALBERTA  
 9530-101 AVENUE T5H 0B3

Project title/Titre du projet

**GRIERSON FOOD SERVICES**  
**KITCHEN AND REC. AREAS**

Approved by/Approuvé par	EE
Designed by/Conçue par	EE
Drawn by/Dessinée par	EE

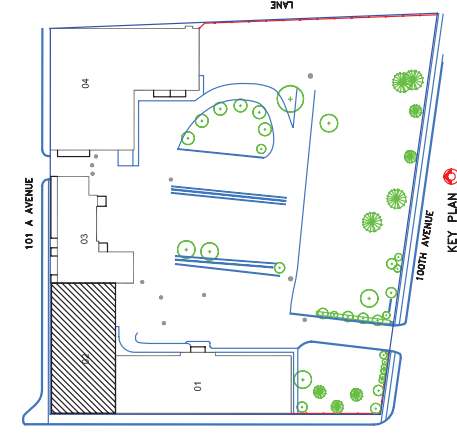
**LIGHTING PLAN**  
**LIFE SAFETY SYSTEMS PLAN**  
**POWER, TEL. & DATA PLAN**

Project No./No. du projet	Sheet/Feuille	Revision no./La Révision No.
		<b>E7</b>

**PTZ = PTZ**

ROOM LEGEND  
BUILDING 2  
2-201 CORRIDOR  
2-202 GYMNASIUM

BUILDING 2  
AREA 573.10 SQ.M



## KEY PLAN



CCTV



= Rack

Notes: New rack  
location in IT room

INSTITUTION	GRIERSON CENTER EDMONTON, ALBERTA
TAG #	BUILDING #
540-04	1
BUILDING NAME	GRIERSON & STAN DANIELS CENTRE
FLOOR	2ND
AREA	AS SHOWN
SCALE	1:225
DATE:	
APPROVED BY:	
	E9

ROOM LEGEND  
BUILDING 1

- 1-201 CORRIDOR
- 1-202 GENERAL AREA
- 1-203 AREA SUPERVISOR
- 1-204 PAROLE OFFICE
- 1-205 PAROLE OFFICE
- 1-206 PAROLE OFFICE
- 1-207 PAROLE OFFICE
- 1-208 PAROLE OFFICE
- 1-209 PAROLE OFFICE
- 1-210 PAROLE OFFICE
- 1-211 READING
- 1-212 JANITOR
- 1-213 FAX
- 1-214 DISTRICT DIRECTOR
- 1-215 OFFICE
- 1-216 STORAGE
- 1-217 WASHROOM
- 1-218 STAFF LOUNGE
- 1-219 PHOTOCOPY
- 1-220 GENERAL OFFICE
- 1-221 OFFICE
- 1-222 STAIRWAY
- 1-223 STORAGE
- 1-224 BOARDROOM
- 1-225 REMOVED
- 1-226 REMOVED
- 1-227 REMOVED
- 1-228 CORRIDOR
- 1-229 GENERAL OFFICE
- 1-230 COMPUTER ROOM
- 1-231 PAROLE OFFICE
- 1-232 PAROLE OFFICE
- 1-233 PAROLE OFFICE
- 1-234 STORAGE
- 1-235 GENERAL OFFICE
- 1-236 PAROLE OFFICE
- 1-237 PAROLE OFFICE
- 1-238 PAROLE OFFICE
- 1-239 OFFICE
- 1-240 BOARDROOM
- 1-241 WASHROOM
- 1-242 WASHROOM
- 1-243 STAIRWAY

