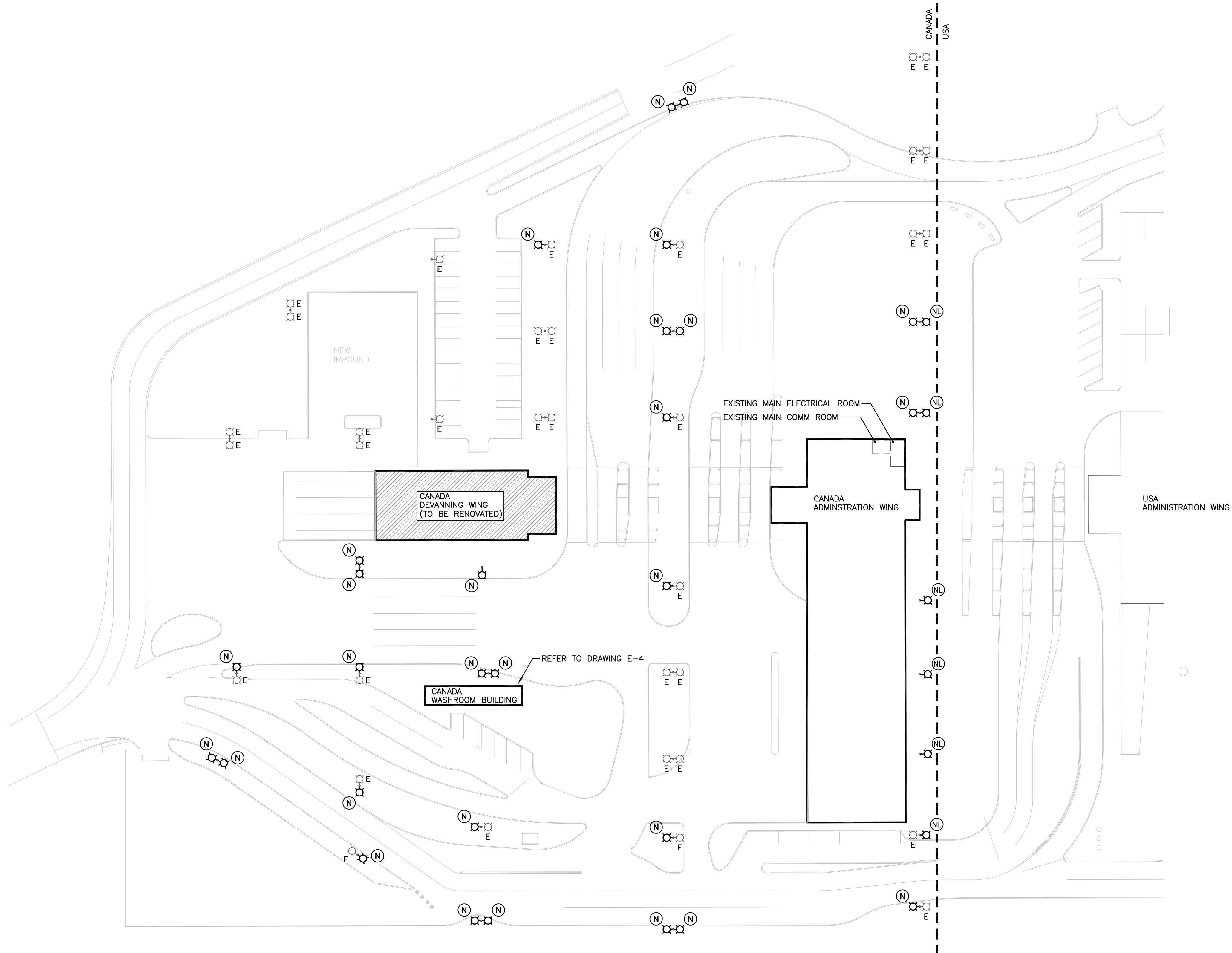
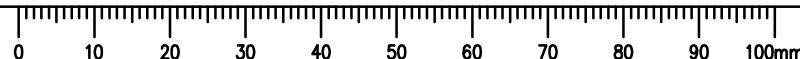


SYMBOL LEGEND		
SYMBOL	DESCRIPTION	MOUNTING
□	SURFACE MOUNTED LUMINAIRE	CEILING
■	SURFACE MOUNTED LUMINAIRE	WALL
⌋	RECESSED LUMINAIRE	CEILING
⌋	RECESSED LUMINAIRE	WALL
—	RECESSED WALL WASHER LUMINAIRE	CEILING
—	ROADWAY/AREA LUMINAIRE	POLE
○	LOW LEVEL AREA LUMINAIRE	POST
○	TRACK LIGHT	AS SHOWN
□	SURFACE MOUNTED LUMINAIRE	CEILING
■	RECESSED MOUNTED LUMINAIRE	CEILING
■	LUMINAIRE CONNECTED TO EMERGENCY POWER OR NIGHT LIGHT (NL)	FLOOR/GROUND
⬢	RECESSED LUMINAIRE UPLIGHT	CEILING
⬢	FLOODLIGHT	AS SHOWN
⬢	EXIT LIGHT (SP= SINGLE FACE)	CEILING
⬢	EXIT LIGHT	WALL
⬢	PHOTOCELL	AS SHOWN
①	INDICATES LUMINAIRE TYPE 'B' - SEE LUMINAIRE SCHEDULE	
②	INDICATES REFERENCE NOTE NO. 2	
③	INDICATES CIRCUIT NO. 2 FROM PANEL 'C'	
EX	INDICATES EXPLOSION-PROOF DEVICE	
EX	INDICATES EXPLOSION-PROOF DEVICE	
⌀	INDICATES LIGHTING BRITISH UNIT WAY, 4=4 WAY, 4=4 DIMMER	148' (1200)
±P	TOGGLE SW. (P=PILOT LT., T=TIMER, S=SPEED, K=KEY OPERATED)	148' (1200)
OS	OCCUPANCY SENSOR SWITCH (NUMBER INDICATES TIME - REFER TO SCHEDULE)	148' (1200)
OS	OCCUPANCY SENSING SWITCH (LETTER INDICATES SENSITIVITY CONTROLLED)	148' (1200)
OS	OCCUPANCY SENSOR (NUMBER INDICATES TIME - REFER TO SCHEDULE)	CEILING/WALL
OS	DAYLIGHT SENSOR (NUMBER INDICATES TIME - REFER TO SCHEDULE)	CEILING/WALL
○	OUTLET/JUNCTION BOX	AS SHOWN
⬢	SINGLE CONVENIENCE RECEPTACLE	112' (300)
⬢	DUPLEX CONVENIENCE RECEPTACLE	112' (300)
⬢	DUPLEX CONVENIENCE RECEPTACLE 15/20A	112' (300)
⬢	FOURPLEX CONVENIENCE RECEPTACLE	112' (300)
⬢	DUPLEX CONVENIENCE RECEPTACLE PEDESTAL MOUNTED	FLOOR
⬢	DUPLEX CONVENIENCE RECEPTACLE FLUSH MOUNTED	FLOOR
⬢	DUPLEX CONVENIENCE RECEPTACLE SPLIT WIRED	AFTER COUNTER
⬢	DUPLEX CONVENIENCE RECEPTACLE ISOLATED GROUND (I.G.)	112' (300)
⬢	DUPLEX CONVENIENCE RECEPTACLE SWITCH ONE SIDE	112' (300)
⬢	DUPLEX CONVENIENCE RECEPTACLE GROUND FAULT INTERRUPTING	112' (300)
⬢	DUPLEX CONVENIENCE RECEPTACLE GROUND FAULT INTERRUPTING - 15/20A	AFTER COUNTER
⬢	SINGLE CONVENIENCE RECEPTACLE TO MATCH PROTECTIVE DEVICE	112' (300)
⬢	SINGLE CONVENIENCE RECEPTACLE 208/240V-18 (AMPERAGE AS NOTED)	112' (300)
⬢	SINGLE CONVENIENCE RECEPTACLE 208/240V-38 (AMPERAGE AS NOTED)	112' (300)
⬢	DATA TELEVISION OUTLET	112' (300)
⬢	TELEPHONE OUTLET, W=wall (+42"), P=PAYPHONE (+42")	112' (300)
⬢	DATA OUTLET	112' (300)
⬢	COMBINATION TELEPHONE/CABLE/ DATA OUTLET	112' (300)
⬢	DATA OUTLET FLUSH MOUNTED	FLOOR
⬢	PUSHBUTTON	AS NOTED
⬢	BLOCKER	DN12' (300)
⬢	BUZZER - 'D' DENOTES DOUBLE	DN12' (300)
⬢	EMERGENCY LIGHTING DEVICE WITH OR WITHOUT HEADS	DN18' (450)
⬢	COMBINATION EXIT SIGN / EMERGENCY LIGHTING FLOOD LIGHTS	WALL
⬢	EMERGENCY LIGHTING FLOOD LIGHT - SINGLE OR DOUBLE	AS SHOWN
⬢	UNFUSED DISCONNECT SWITCH	AS SHOWN
⬢	FUSED DISCONNECT SWITCH	AS SHOWN
⬢	MAGNETIC MOTOR STARTER	146' (1500)
⬢	COMBINATION DISCONNECT/MAGNETIC MOTOR STARTER	146' (1500)
⬢	MANUAL MOTOR STARTER	AS SHOWN
⬢	MAGNETIC MOTOR CONNECTION	AS SHOWN
⬢	FIXED FIRE EQUIPMENT CONNECTION	146' (1500)
⬢	TERMINOSTAT	
⬢	ELECTRIC BASEBOARD HEATER UNLESS NOTED AS FOLLOWS: FF = FORCE FLOW, UH = UNIT HEATER, CH = CONNECTION HEATER KS = KNOCKPAGE HEATER, P= PATIO DOOR HEATER B1 = BUILT-IN THERMOSTAT, CR = CONTROL RELAY	
⬢	ELECTRICAL DISTRIBUTION PANELBOARD	CEILING
⬢	ELECTRICAL DISTRIBUTION PANELBOARD	FLOOR
⬢	SPEAKER	SURFACE
⬢	SPEAKER	WALL
⬢	MICROPHONE OUTLET	112' (300)
⬢	INTERCOM COMMUNICATION HANDSET	146' (1500)
⬢	AUTOMATIC DETECTOR 180° P.C.R.	CEILING
⬢	AUTOMATIC HEAT DETECTOR 180° FIXED TEMP.	CEILING
⬢	SMOKE DETECTOR (D DENOTES DETECT DETECTOR)	CEILING
⬢	SMOKE ALARM	CEILING
⬢	FIRE ALARM PULL STATION	145' (1150)
⬢	FIRE ALARM BELL OR HORN & PULL STATION	DN12' (300)
⬢	COMBINATION FIRE ALARM BELL/STROBE OR HORN/STROBE	DN12' (300)
⬢	FIRE ALARM BUZZER	145' (1150)
⬢	FIRE ALARM SIREN	CEILING
⬢	COMBINATION FIRE ALARM SPEAKER/STROBE LIGHT	CEILING
⬢	MAGNETIC DOOR HOLDER	FLOOR/WALL
⬢	FIRE ALARM STROBE LIGHT	DN12' (300)
⬢	SMOKE ALARM STROBE LIGHT	DN12' (300)
⬢	FLOOD SWITCH	
⬢	PRESSURE SWITCH	
⬢	TAMPER SWITCH	
⬢	PAC FLOOR WITH DEVICES AS NOTED	
⬢	MULTI SENS. RECESSED FLOOR BOARD WITH DEVICES AS NOTED	FLOOR
⬢	FIRE WIRE CONNECTION TO PRE-WIRED FIREWIRE SCREENS	
⬢	INTRUDER ALARM MAGNETIC DOOR DETECTOR	
⬢	INTRUDER ALARM PASSIVE INFRARED DETECTOR	WALL
⬢	INTRUDER ALARM PASSIVE INFRARED DETECTOR	CEILING
⬢	SECURITY CAMERA	
⬢	INTRUDER ALARM KEYPAD	
⬢	CARD READER	
⬢	DOOR STRIKE	
⬢	INDICATES EXISTING DEVICE TO REMAIN	
⬢	INDICATES EXISTING DEVICE TO BE REMOVED	
RE	REPLACEMENT EX	
RE	NIGHT LIGHT ON CONTINUOUSLY	

Revision/ Révision	Description/Description	Date/Date
Client/client		
<p align="center">CANADA BORDER SERVICES AGENCY</p>		
<p>Project title/Titre du projet</p> <p align="center">Canada Devanning Wing #202-97th Street Osoyoos BC V0H-1V1</p>		
<p align="center">OKANAGAN & KOOTENAY DISTRICT OFFICE RELOCATION</p>		
<p>Consultant Signature Box Only</p>		
<p>Designed by/Concept par GH</p>		
<p>Drawn by/Dessiné par GW</p>		
<p>PWGCSC Project Manager/Administrateur de Projets TPSGC JULIAN HO</p>		
<p>PWGCSC, Regional Manager, Architectural and Engineering Services/ Gestionnaire régionale, Services d'architecture et de génie, TPSGC PRESTITIPAL PAUL</p>		
<p>Drawing title/Titre du dessin</p> <p align="center">SITE PLAN, SYMBOL LEGEND</p>		
Project No./No. du projet	Sheet/Fauille	Revision no./ La Révision no.
R.082890.001	E - 1 OF 8	



S I T E P L A N
1 : 500





APR 27, 2017

5		
4		
3	ISSUED FOR TENDER	17/04/27
2	ISSUED FOR 99% REVIEW	17/02/06
1	ISSUED FOR 66% REVIEW	16/12/19
0	ISSUED FOR 33% REVIEW	16/11/09
Revision/ Révision	Description/Description	Date/Date

Client/client

CANADA BORDER
SERVICES AGENCY

Project title/Titre du projet
Canada Devanning Wing
#202-97th Street
Osoyoos BC V0H 1V1

OKANAGAN & KOOTENAY
DISTRICT
OFFICE RELOCATION

Consultant Signature Box Only

Designed by/Concept par
GH

Drawn by/Dessiné par
GW

PWSSC Project Manager/Administrateur de Projets TPSGC
JULIAN HO

PWSSC, Regional Manager, Architectural and Engineering Services/
Gestionnaire Régionale, Services d'architecture et de génie, TPSGC
PREETIPAL PAUL

Drawing title/Titre du dessin

SECOND FLOOR NEW PLAN
LIGHTING

Project No./No. du projet

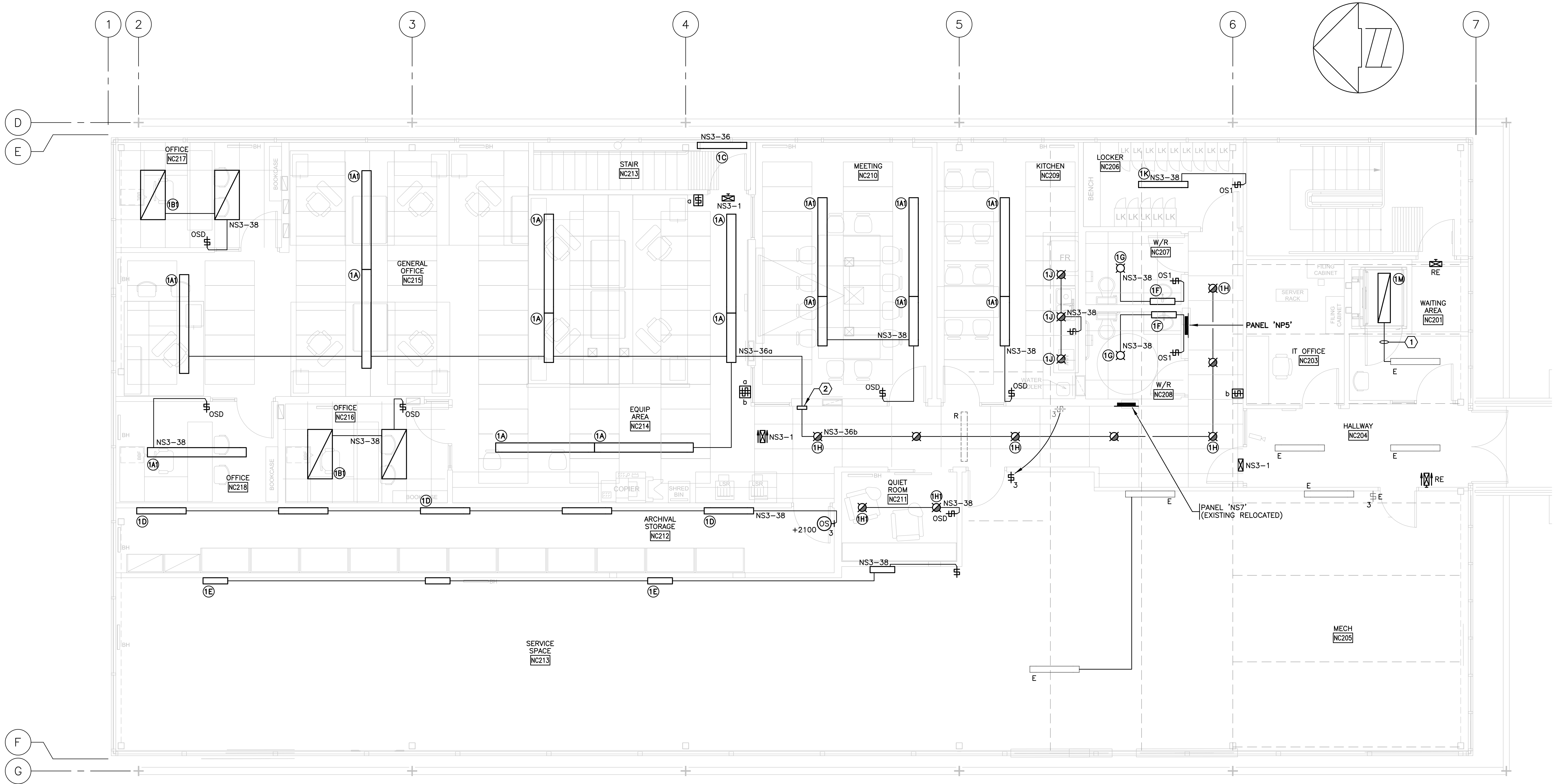
R.082890.001

Sheet/Fauille

E - 3

OF 8

Revision no./
La Révision
no.



SECOND FLOOR PLAN -- LIGHTING

1 : 50

GENERAL NOTES

- CEILING IS TO BE KEPT CLEAR OF ALL WIRING EXCEPT THAT WHICH IS REQUIRED TO SERVE LOADS LOCATED OR SUPPORTED FROM THE CEILING.
- GENERAL OFFICE AND CORRIDOR LIGHTING CONTROLLED BY LOW VOLTAGE SWITCHES/RELAYS ARE TO BE SWITCHED OFF WHEN SPACE IS UNOCCUPIED (VIA SECURITY SYSTEM).

REFERENCE NOTES

- CONNECT TO EXISTING LIGHTING CIRCUIT.
- RELAY CABINETS IN CEILING SPACE.

OCCUPANCY SENSOR SCHEDULE					
TYPE	MANUFACTURER	MINIMUM ACCEPTABLE STANDARD	VOLT	REMARKS	SEE NOTE
OSD	SENSORSWITCH	WSXD-SA-WH	120	PIR DIMMING WALL SWITCH	1
OS1	SENSORSWITCH	WSX-SA-WH	120	PIR WALL SWITCH	1
OS2	SENSORSWITCH	WV-16	120	PIR WALL MOUNT WIDE VIEW	2
OS3	SENSORSWITCH	HW-13	120	PIR WALL MOUNT HALLWAY	

NOTES

- SET FOR MANUAL-ON (DEFAULT MODE).
- PROVIDE SHIELDING ON LENS TO PREVENT FALSE TRIGGERING.

LOW VOLTAGE SYSTEM CONTROL SCHEDULE										
ROOM	TYPE	QTY.	W/LUM	LOAD (W)	CIRCUIT	SWITCH	DIMMING	OS CONTROL	DAYLIGHT CONTROL	SEE NOTE
GENERAL OFFICE NC105	1A-4'	2	55	110	NS3-36	a	N	N	N	1
	1A-8'	3	110	330			N	N	N	1
	1A1-8'	2	110	220			Y	N	Y	1,2
EQUIPMENT AREA NC214	1A-8'	2	110	220	NS3-36	b	N	N	N	1
CORRIDOR	1H	7	24	168			N	N	N	1
VARIOUS	REC	5			NP5-5		N	N	N	3
	REC	5			NP5-29		N	N	N	3
	REC	5			NP5-31		N	N	N	3

NOTES

- LIGHTING IN ROOMS INDICATED TO BE SWITCHED OFF WHEN SECOND FLOOR IS UNOCCUPIED.
- LUMINAIRES HAVE INTEGRAL DAYLIGHTING CONTROLS.
- RECEPTACLE CIRCUITS NOTED ON PLANS TO BE SWITCHED OFF WHEN BUILDING IS UNOCCUPIED (VIA LOW VOLTAGE SYSTEM).



APR 27, 2017

Revision/	Description/Description	Date/Date
5		
4		
3	ISSUED FOR TENDER	17/04/27
2	ISSUED FOR 99% REVIEW	17/02/06
1	ISSUED FOR 66% REVIEW	16/12/19
0	ISSUED FOR 33% REVIEW	16/11/09

Client/client

CANADA BORDER
SERVICES AGENCY

Project title/Titre du projet
Canada Devanning Wing
#202-97th Street
Osoyoos BC V0H 1V1

OKANAGAN & KOOTENAY
DISTRICT
OFFICE RELOCATION

Consultant Signature Box Only

Designed by/Concept par
GH

Drawn by/Dessiné par
GW

PWSC Project Manager/Administrateur de Projets TPSGC
JULIAN HO

PWSC, Regional Manager, Architectural and Engineering Services/
Gestionnaire régionale, Services d'architecture et de génie, TPSGC
PREETIPAL PAUL

Drawing title/Titre du dessin

FIRST FLOOR NEW PLAN
POWER & AUXILIARIES,
WASHROOM BUILDING

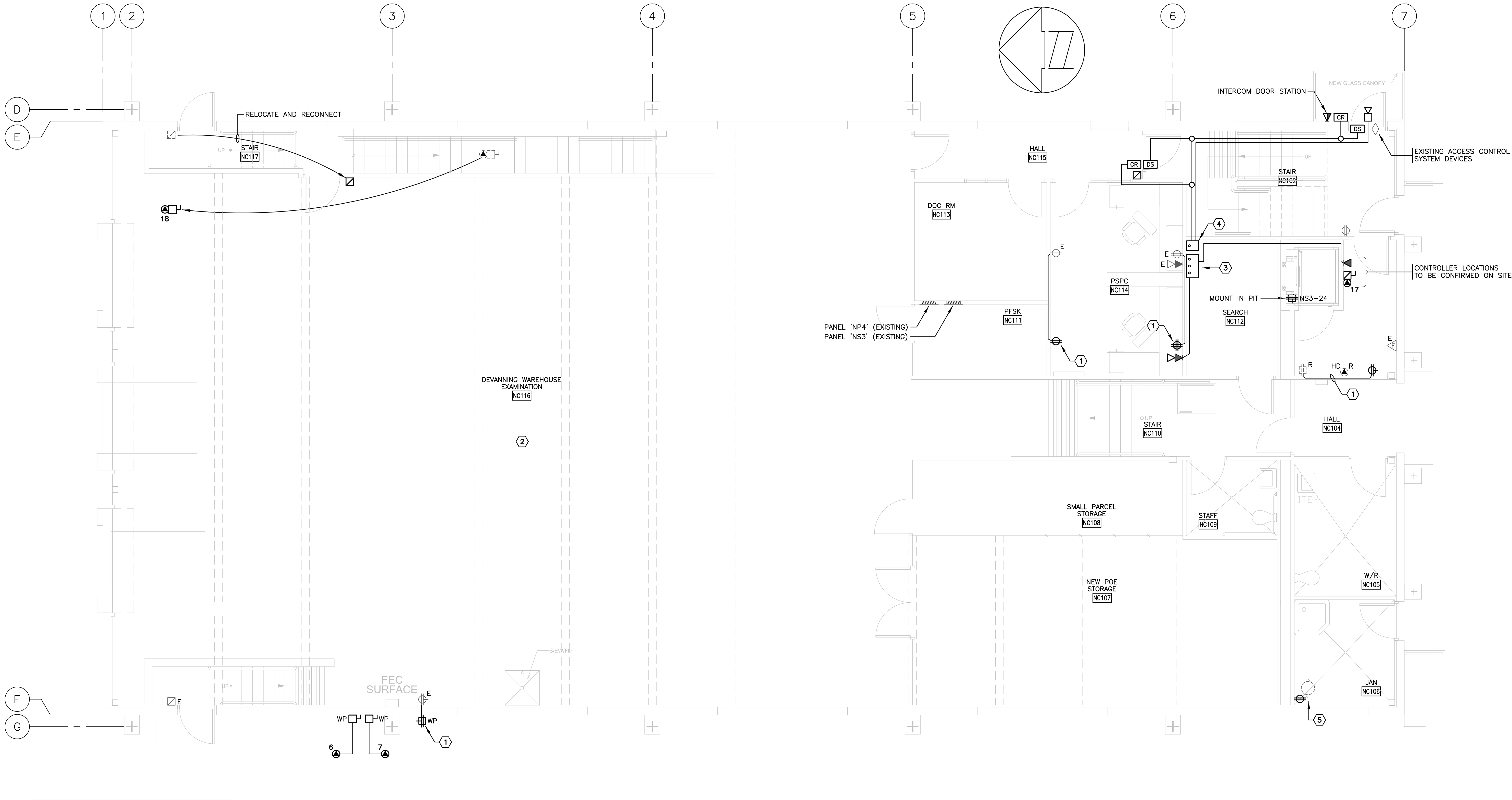
Project No./No. du projet

R.082890.001

Sheet/Fauille

E - 4
OF 8

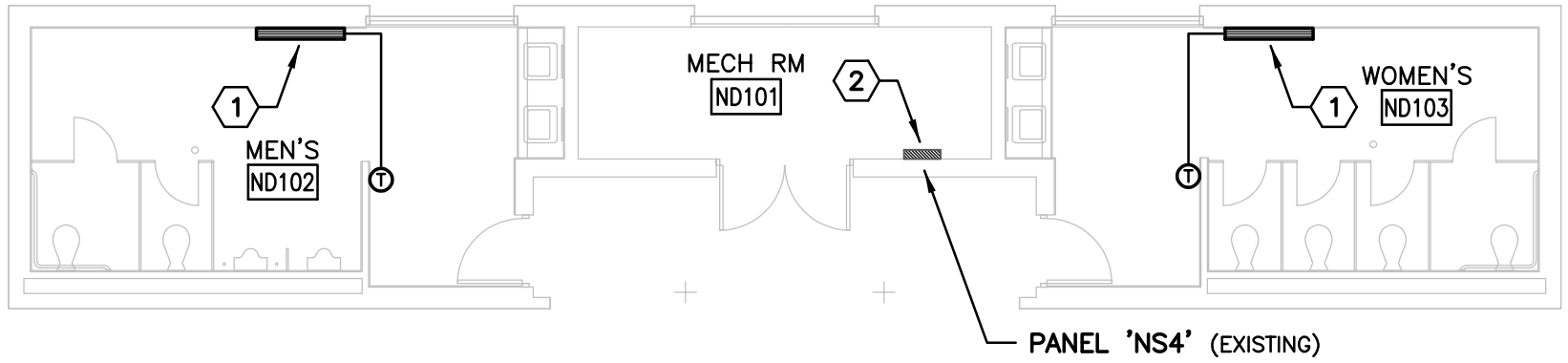
Revision no./
La révision
no.



FIRST FLOOR PLAN – POWER & AUXILIARIES
1 : 50

REFERENCE NOTES

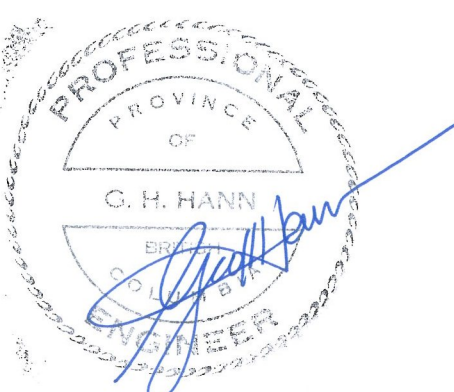
- CONNECT TO EXISTING RECEPTACLE CIRCUIT.
- REMOVE AND REINSTALL SECURITY SYSTEM CONDUIT AND WIRING RUNNING TO NORTH-WEST EXIT DOOR BELOW THE BEAM TO ALLOW FOR CONSTRUCTION OF NEW SECOND FLOOR.
- PROVIDE PULLBOX AT CEILING FOR TERMINATION OF NEW VOICE/DATA CONDUITS. PROVIDE TAMPERPROOF SCREWS AND 3/8"2" C. STUBBED 600mm ABOVE FLOOR OF IT OFFICE ABOVE.
- PROVIDE PULLBOX AT CEILING FOR TERMINATION OF NEW SECURITY SYSTEM CONDUITS. PROVIDE TAMPER PROOF SCREWS AND 1/2"2" C. STUBBED 600mm ABOVE FLOOR OF IT OFFICE ABOVE.
- DISCONNECT EXISTING PUMP HWC-1 AND PROVIDE DUPLEX RECEPTACLE FOR NEW PUMP DWHR-P1. CONNECT TO EXISTING CIRCUIT.



CANADA WASHROOM BUILDING – POWER
1 : 100

REFERENCE NOTES

- 2.0KW CONVECTION HEATER, 2P-30A, NS4-17,19, 2#10.
- PROVIDE 2P-30A BREAKER IN PLACE OF 2#1P-20A SPARE BREAKERS.



APR 27, 2017

Revision/ Révision	Description/Description	Date/Date
5		
4		
3	ISSUED FOR TENDER	17/04/27
2	ISSUED FOR 99% REVIEW	17/02/06
1	ISSUED FOR 66% REVIEW	16/12/19
0	ISSUED FOR 33% REVIEW	16/11/09

Client/client

CANADA BORDER
SERVICES AGENCY

Project title/Titre du projet
Canada Devanning Wing
#202-97th Street
Osoyoos BC V0H 1V1

OKANAGAN & KOOTENAY
DISTRICT
OFFICE RELOCATION

Consultant Signature Box Only

Designed by/Concept par
GH

Drawn by/Dessiné par
GW

PWSSC Project Manager/Administrateur de Projets TPSSC
JULIAN HO

PWSSC, Regional Manager, Architectural and Engineering Services/
Gestionnaire régionale, Services d'architecture et de génie, TPSSC
PREETIPAL PAUL

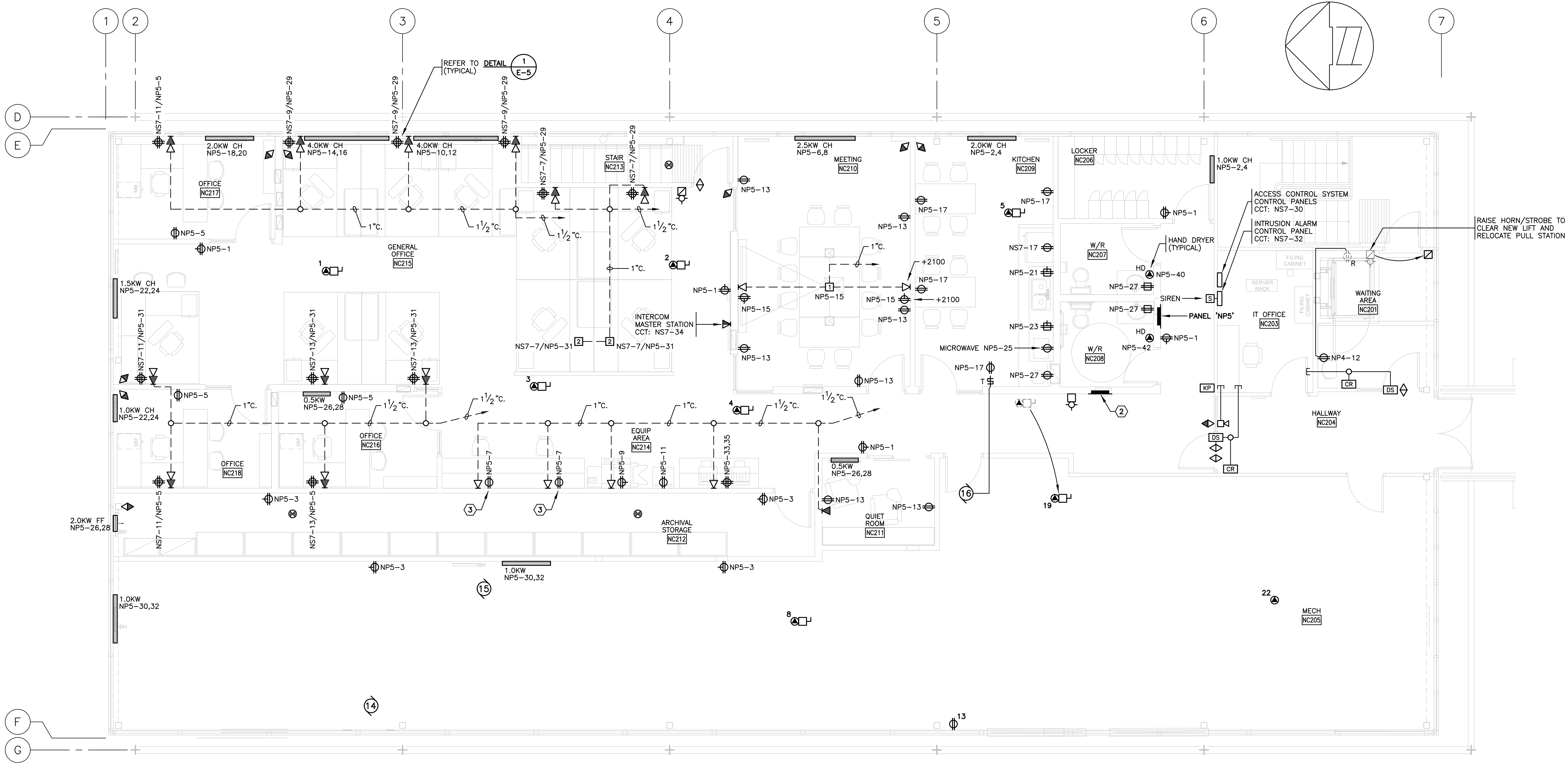
Drawing title/Titre du dessin

SECOND FLOOR NEW PLAN
POWER & AUXILIARIES,
RECEPTACLE DETAIL

Project No./No. du projet
R.082890.001

Sheet/Fauille
E - 5
OF 8

Revision no./
La révision
no.



ALL ELECTRIC HEATERS SHALL HAVE
BUILT-IN LOW VOLTAGE RELAYS FOR
CONTROL CONNECTIONS BY
MECHANICAL CONTRACTOR

SECOND FLOOR PLAN – POWER & AUXILIARIES

1 : 50

GENERAL NOTES

- CEILING IS TO BE KEPT CLEAR OF ALL WIRING EXCEPT THAT WHICH IS REQUIRED TO SERVE LOADS LOCATED OR SUPPORTED FROM THE CEILING.
- VOICE/DATA AND SECURITY CONDUITS SHALL BE 19mm (3/4"), UNLESS OTHERWISE INDICATED.

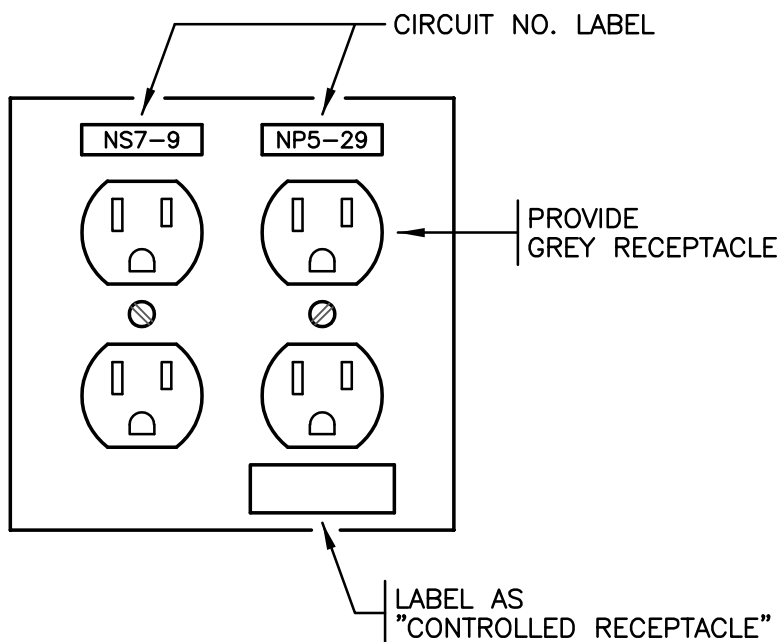
REFERENCE NOTES

- CONNECT TO EXISTING RECEPTACLE CIRCUIT.
- PANEL 'NS7' (EXISTING) REMOVE AND REINSTALL ON OPPOSITE SIDE OF WALL. SPLICE AND EXTEND EXISTING CIRCUITS – REFER TO PANEL SCHEDULE.
- MOUNT IN DATA/POWER UPSTAND – REFER TO ARCHITECTURAL DRAWINGS FOR MOUNTING DETAIL.

FLOOR BOX SCHEDULE					
TYPE	DUPLEX RECEPTACLES	VOICE	DATA	A/V	NOTES
1	2	1	2	1	1
2	2	1	1	–	

NOTES

- PROVIDE 15/20A T-SLOT DUPLEX RECEPTACLES.

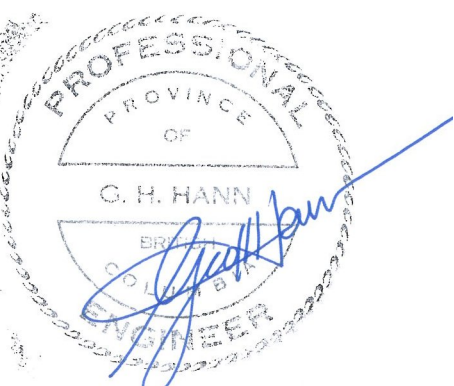


CONTROLLED QUAD RECEPTACLE DETAIL

N T S

NOTES

- PROVIDE BARRIER BETWEEN RECEPTACLES.
- SINGLE CONTROLLED RECEPTACLES SHALL BE GREY AND LABELLED AS PER ABOVE.
- ONE DUPLEX RECEPTACLE IN EACH QUAD RECEPTACLE LOCATED IN PRIVATE OFFICES AND AT WORK STATIONS SHALL BE CONTROLLED VIA THE LOW VOLTAGE CONTROL SYSTEM. REFER TO SCHEDULE ON DRAWING E-3.



APR 27, 2017

5		
4		
3	ISSUED FOR TENDER	17/04/27
2	ISSUED FOR 99% REVIEW	17/02/06
1	ISSUED FOR 66% REVIEW	16/12/19
0	ISSUED FOR 33% REVIEW	16/11/09
Revision/ Révision	Description/Description	Date/Date

Client/client

CANADA BORDER
SERVICES AGENCY

Project title/Titre du projet
Canada Devanning Wing
#202-97th Street
Osoyoos BC V0H 1V1

OKANAGAN & KOOTENAY
DISTRICT
OFFICE RELOCATION

Consultant Signature Box Only

Designed by/Concept par
GH

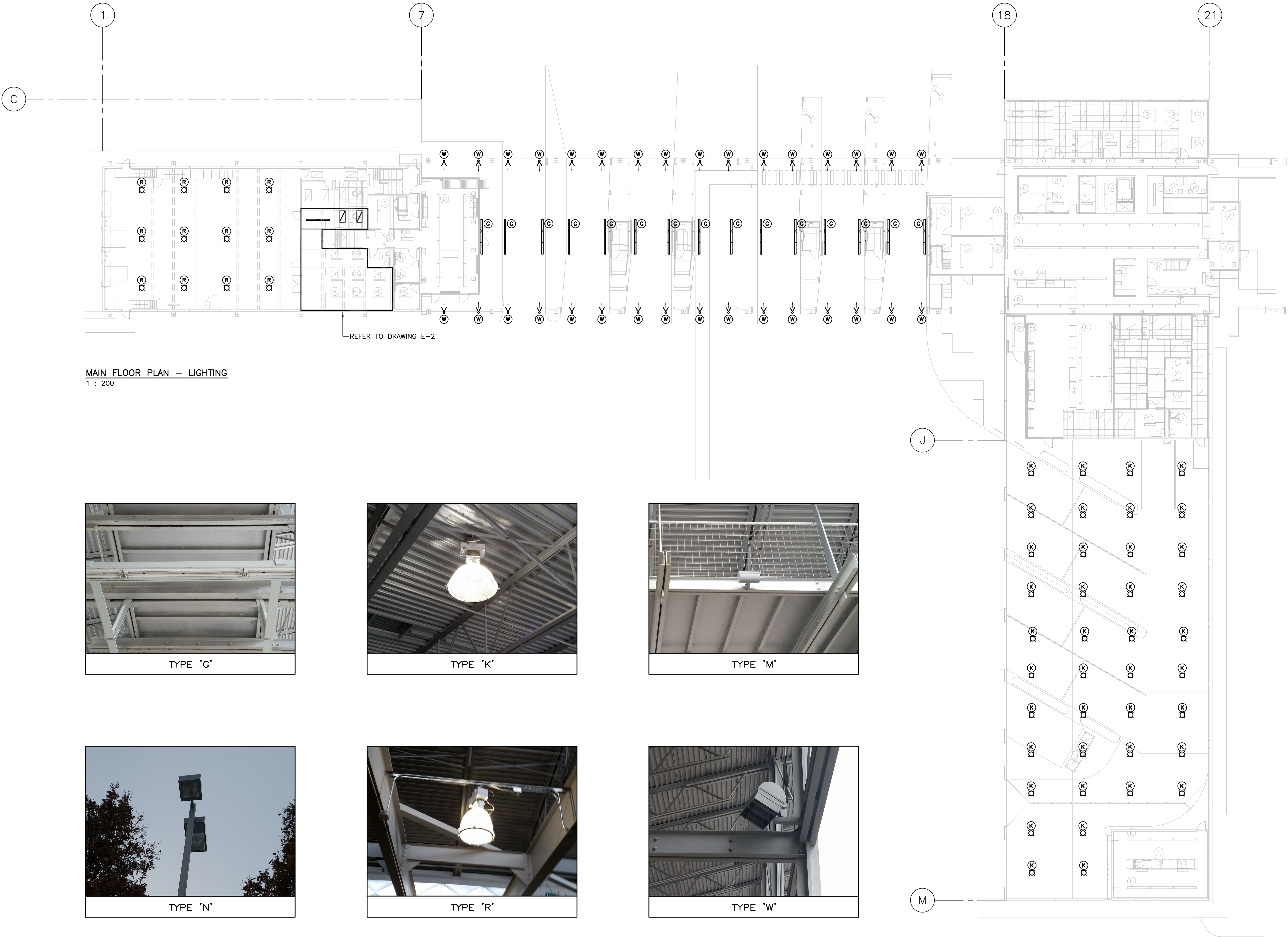
Drawn by/Dessiné par
GW

PWGSC Project Manager/Administrateur de Projets TPSGC
JULIAN HO

PWGSC, Regional Manager, Architectural and Engineering Services/
Gestionnaire régionale, Services d'architecture et de génie, TPSGC
PREETIPAL PAUL

Drawing title/Titre du dessin
MAIN FLOOR PLAN -
LIGHTING UPGRADE,
EXISTING LUMINAIRE PHOTOS

Project No./No. du projet R.082890.001	Sheet/Feuille E - 6 OF 8	Revision no./ La Révision no.
---	--------------------------------	-------------------------------------



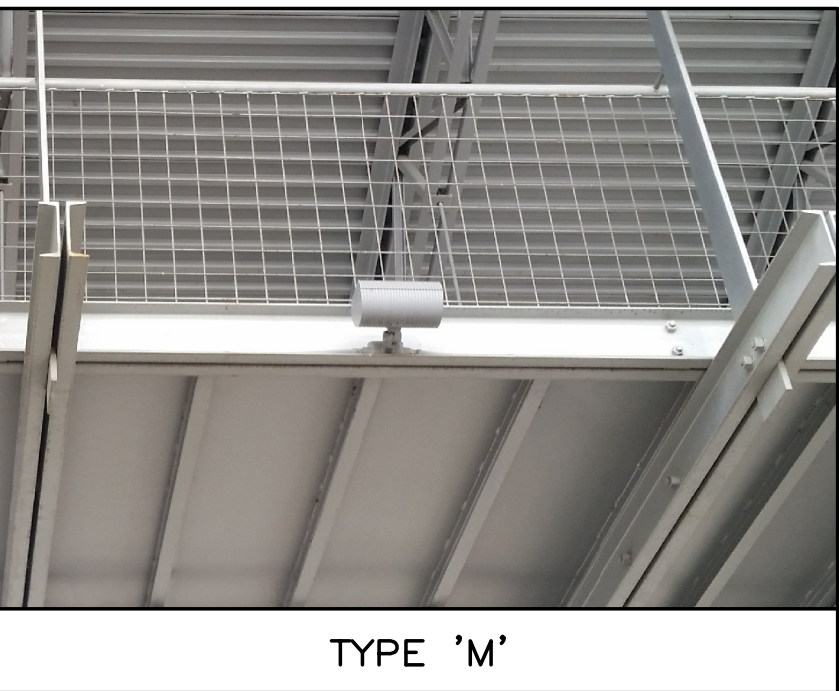
MAIN FLOOR PLAN – LIGHTING
1 : 200



TYPE 'G'



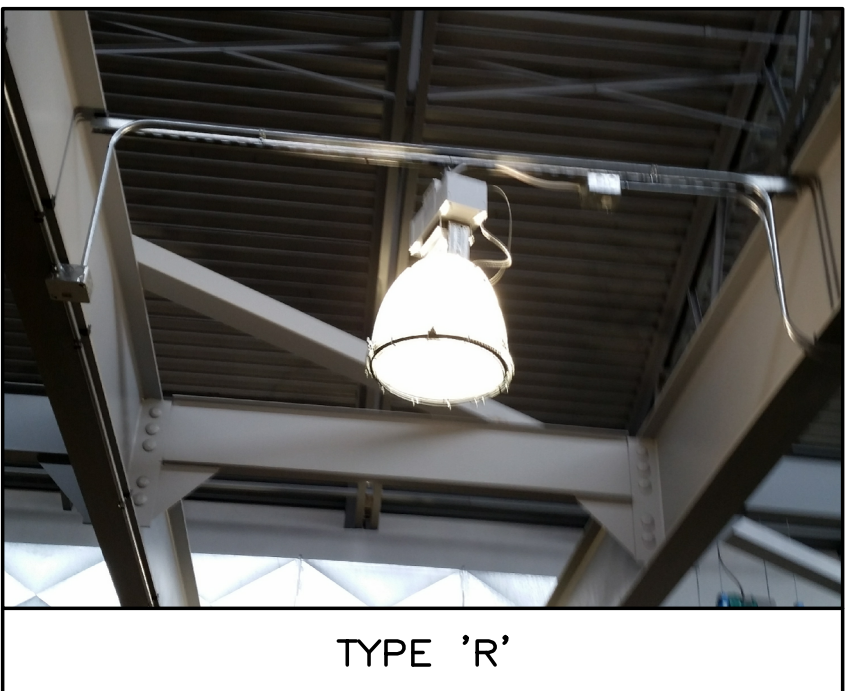
TYPE 'K'



TYPE 'M'



TYPE 'N'



TYPE 'R'



TYPE 'W'

EXISTING LUMINAIRES





APR 27, 2017

5		
4		
3	ISSUED FOR TENDER	17/04/27
2	ISSUED FOR 99% REVIEW	17/02/06
1	ISSUED FOR 66% REVIEW	16/12/19
0	ISSUED FOR 33% REVIEW	16/11/09
Revision/ Révision	Description/Description	Date/Date

Client/client

CANADA BORDER
SERVICES AGENCY

Project title/Titre du projet
Canada Devanning Wing
#202-97th Street
Osoyoos BC V0H 1V1

OKANAGAN & KOOTENAY
DISTRICT
OFFICE RELOCATION

Consultant Signature Box Only

Designed by/Concept par
GH

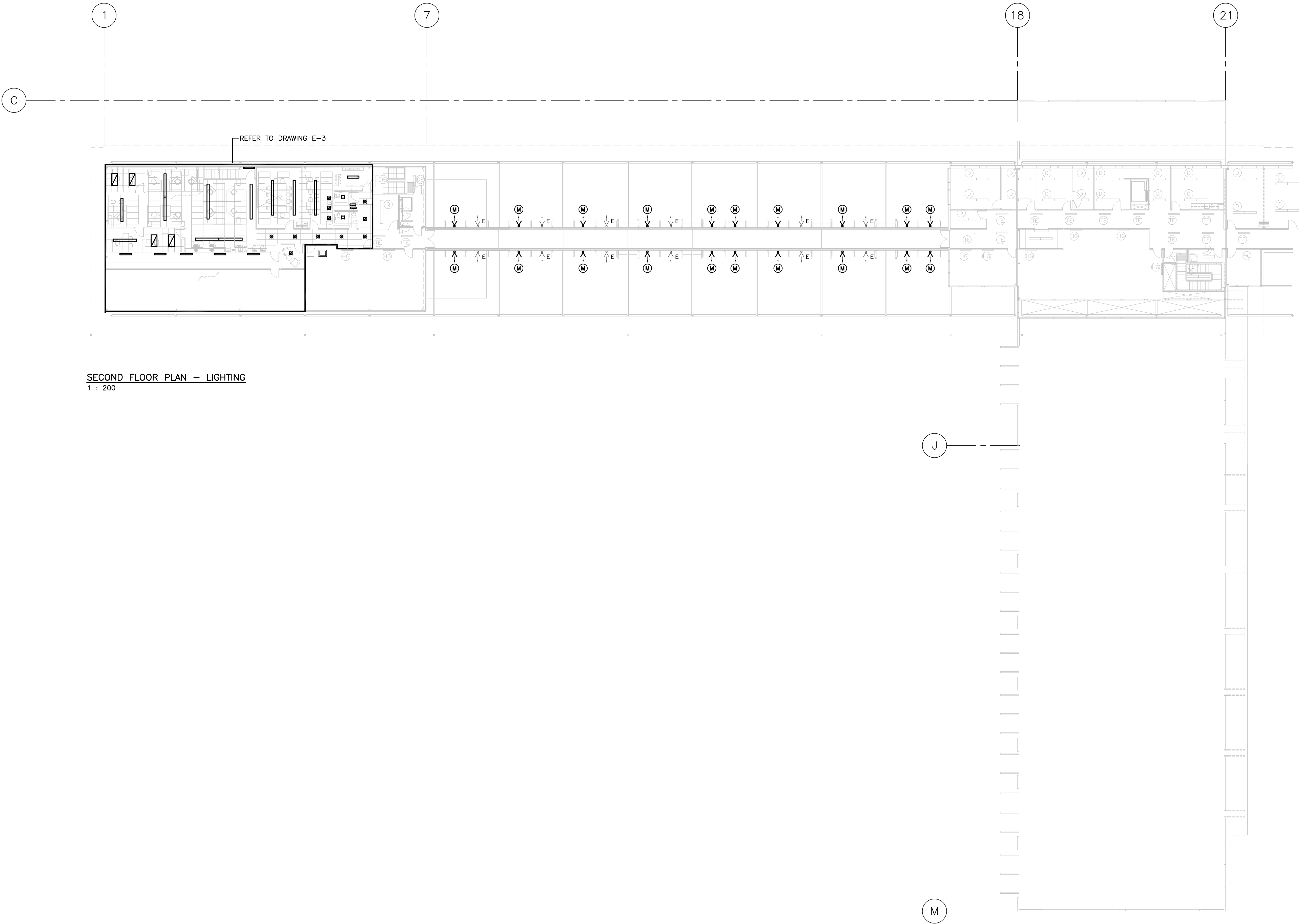
Drawn by/Dessiné par
GW

PWGSC Project Manager/Administrateur de Projets TPSGC
JULIAN HO

PWGSC, Regional Manager, Architectural and Engineering Services/
Gestionnaire régionale, Services d'architecture et de génie, TPSGC
PREETIPAL PAUL

Drawing title/Titre du dessin
SECOND FLOOR PLAN -
LIGHTING UPGRADE

Project No./No. du projet R.082890.001	Sheet/Feuille E - 7 OF 8	Revision no./ La Révision no.
---	--------------------------------	-------------------------------------



SECOND FLOOR PLAN – LIGHTING
1 : 200



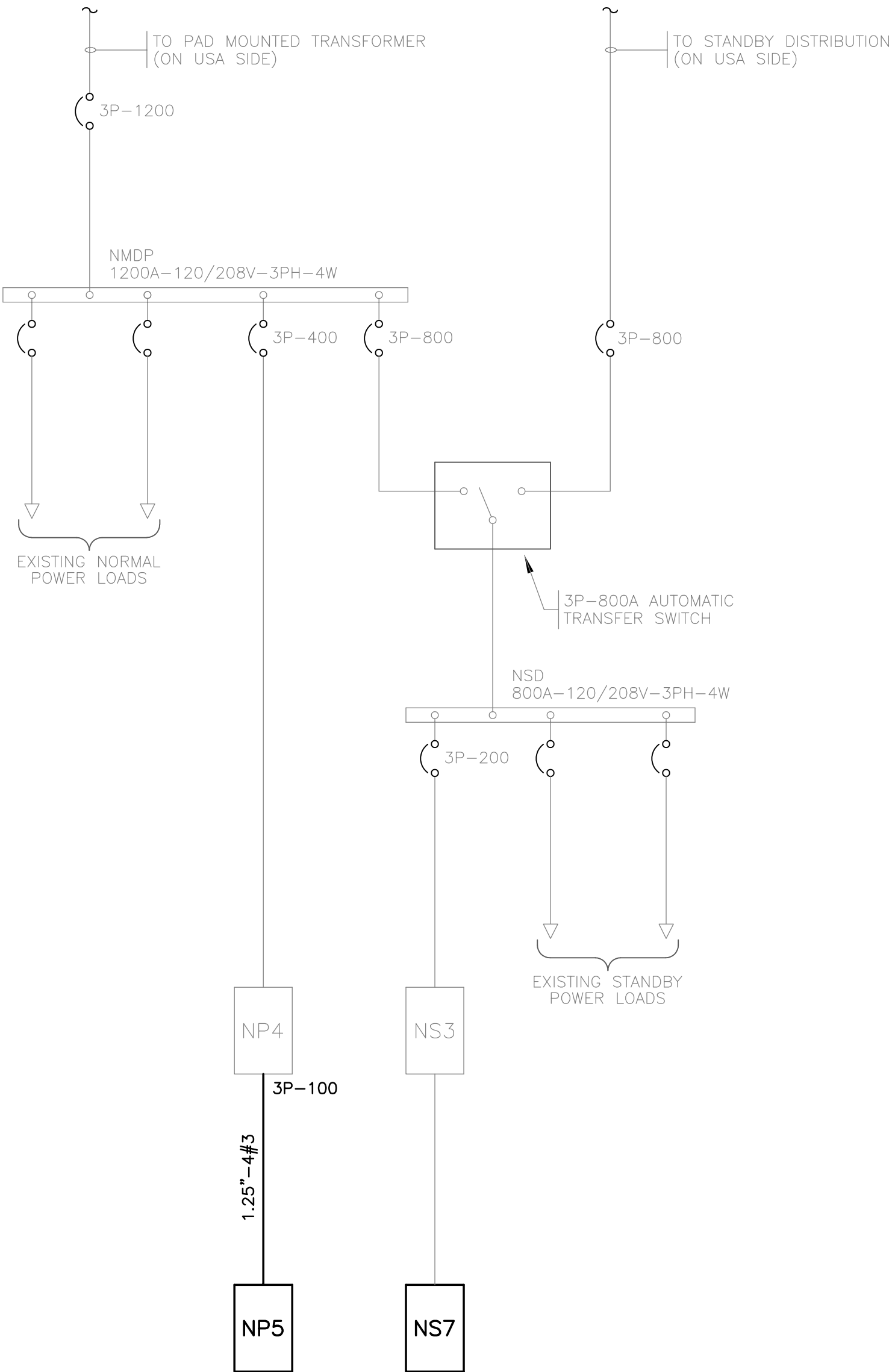
250A-120/208V-3PH-4W			PANEL 'NS3'			- EXISTING EATON PRL3A		
LOAD	TRIP AMP	BR. NO.	BUS A B C	BR. NO.	TRIP AMP	LOAD		
		1		2	3P			
		3		4	20			
		5		6	A			
		7		8	3P			
HP-1 (EXISTING)	3P	9		10	30			
	A	11		12	A			
	3P	13		14	20			
PANEL NS7 (EXISTING)	100	15		16	2P			
	A	17		18	50			
	3P	19		20	20			
EXISTING LOADS	15	21		22	20			
	A	23		24	15			
	20	25		26	20			
	20	27		28	20			
	20	29		30	20			
	20	31		32	20			
	20	33		34	20			
	20	35		36	20			
	20	37		38	20			
	20	39		40	20			
	20	41		42	20			
	20	43		44	20			
SPARE (EXISTING)	20	45		46	20			
SPARE (EXISTING)	20	47		48	20			
EXISTING LOADS	20	49		50	20			
EXISTING LOADS	20	51		52	20			
		53		54				
	3P	55		56	20			
PIL BOOTH PANEL (EXIST)	40	57		58	20			
	A	59		60	20			
		61		62				
		63		64				
		65		66				
		67		68				
		69		70				
		71		72				

400A-120/208V-3PH-4W			PANEL 'NP4'			- EXISTING EATON PRL1A		
LOAD	TRIP AMP	BR. NO.	BUS A B C	BR. NO.	TRIP AMP	LOAD		
	3P	1		2	20			
	90	3		4	20			
EDH-2 (EXISTING)	A	5		6	20			
	3P	7		8	20			
DWH CIRC PUMP (EXIST)	20	9		10	20			
	A	11		12	20			
	3P	13		14	3P			
CU-1	60	15		16	60			
	A	17		18	A			
	3P	19		20	3P			
DOCK LEVELLER (RELOCATE BREAKER)	20	21		22	90			
	A	23		24	A			
	3P	25		26	3P			
PANEL 'NP5'	100	27		28	15			
	A	29		30	A			
EXISTING LOADS	20	31		32	20			
	2P	33		34	20			
	20	35		36	20			
	20	37		38	20			
	20	39		40	20			
	20	41		42	20			

100A-120/208V-3PH-4W			PANEL 'NP5'					
LOAD	TRIP AMP	BR. NO.	BUS A B C	BR. NO.	TRIP AMP	LOAD		
Φ (5)	20	1		2	2P			
Φ (4)	20	3		4	20			
Φ (6)	15	5		6	2P			
Φ (2)	15	7		8	15			
Φ (1) COPIER	20	9		10	2P			
Φ (1) SHREDDER	15	11		12	15			
Φ (5)	15	13		14	2P			
Φ (4)	20	15		16	15			
Φ (4)	15	17		18	2P			
SPARE	15	19		20	15			
Φ (1) COUNTER	20	21		22	2P			
Φ (1) ↓	20	23		24	15			
Φ (1) MICROWAVE	15	25		26	2P			
Φ (3)	15	27		28	15			
Φ (5)	15	29		30	2P			
Φ (5)	15	31		32	15			
Φ (1) PRINTER	15	33		34	3P			
Φ (1) ↓	15	35		36	15			
SPARE	15	37		38	A			
	15	39		40	20			
	15	41		42	20			
	15	43		44	20			
	15	45		46	20			
		47		48				
		49		50				
		51		52				
		53		54				
		55		56				
		57		58				
		59		60				

100A-120/208V-3PH-4W			PANEL 'NS7'			- EATON PRL1 (TO MATCH EXISTING)		
LOAD	TRIP AMP	BR. NO.	BUS A B C	BR. NO.	TRIP AMP	LOAD		
EXISTING LOADS	20	1		2	2P			
	20	3		4	15			
	20	5		6	2P			
Φ (4)	15	7		8	15			
Φ (3)	15	9		10	2P			
Φ (3)	15	11		12	15			
Φ (3)	15	13		14	2P			
Φ (2)	15	15		16	15			
Φ (1) FRIDGE	15	17		18	2P			
	3P	19		20	15			
HP-3 (EXISTING)	100	21		22	15			
	A	23		24	15			
	15	25		26	15			
SPARE	15	27		28	15			
	15	29		30	15			
	15	31		32	15			
	15	33		34	15			
		35		36				
		37		38				
		39		40				
		41		42				

- NOTES
- NEW PANEL TO REPLACE EXISTING IN NEW LOCATION. REINSTALL EXISTING BREAKERS IN NEW PANEL.
 - PROVIDE JUNCTION BOX IN ACCESSIBLE CEILING SPACE ABOVE. SPLICE AND EXTEND EXISTING FEEDERS AS REQUIRED AND RECONNECT TO EXISTING BREAKERS.



SINGLE LINE DIAGRAM
N T S

LUMINAIRE SCHEDULE									
TYPE	LUMINAIRE				LAMP (LED)				SEE NOTE
	GENERIC DESCRIPTION	MANUFACTURER	MINIMUM ACCEPTABLE STANDARD	VOLT	LUMENS	POWER(W)	COLOUR(K)		
G	RETORFIT EXISTING COVE LUMINAIRE WITH LED LAMPS	METALUX	SSLED-LD1-18-W-UNV-L840-CD2-SHK-SVPD3	120	2050	18	4000	1	
K	LED HIGH BAY	LUMARK	XTOR1B	120	1400	12	5000	2,14	
M	SMALL LED EXTERIOR UPLIGHT	GARDCO	ECF-S-64L-1A-OW-G2-RAM-3-UNV-BZ	208	21500	212	5700	4,14	
N	MEDIUM LED TYPE 3 LUMINAIRE ON EXISTING POLE	GARDCO	PFAS-184L-1A-NW-G1-AR-3-UNV-DD-SP2-SPA-BZ	208	60900	638	4000	4,14	
NL	LARGE LED TYPE 3 LUMINAIRE ON EXISTING POLE	DECO	D952-LED-2280-35UNV-PR-F-TWH-C12	208	10200	105	3500	2,3	
R	LED LOW BAY WITH PRISMATIC ACRYLIC REFLECTOR	LUMARK	NFFLD-A40-E-UNV-66-S-AP-TS2/NFFLD-AP	208	14600	129	4000	2	
W	LED FLOODLIGHT	LEDALITE	MQ06LBGFF0811EW-A1	120	10800	110	3500	5	
1A	SUSPENDED LED LINEAR DIRECT/INDIRECT	LEDALITE	MQ06LBGFF04/0811EW-DS-A1	120	5400	55	3500	5,10	
1A1	SUSPENDED LED LINEAR DIRECT/INDIRECT C/W DIMMING & INTEGRAL DAYLIGHT SENSOR	LITHONIA	2AVL4 50L MDR LP835	120	5000	61	3500		
1B	RECESSED 2'x4' LED DIRECT/INDIRECT	LITHONIA	2AVL4 50L MDR EZ1-LP835	120	5000	61	3500	10	
1B1	RECESSED 2'x4' LED DIRECT/INDIRECT C/W DIMMING	LITHONIA	WL4 40L LP835 NES7 DIM10	120	4000	40	3500	6	
1C	LED 4' WALL BRACKET	LITHONIA	WL4 40L LP835	120	4000	42	3500	7	
1D	LED 4' WALL BRACKET C/W INTEGRAL OCCUPANCY SENSOR & 10% DIMMING	LITHONIA	ZL2N L24 2000LM MDD 35K 80CRI WH	120	2000	34	3500	8	
1E	LED 4' STRIP LIGHT	LITHONIA	WL2 18L LP835	120	1800	18	3500	9	
1F	LED 2' WALL BRACKET	JUNO	6RLS-930-9-WH	120	1000	14	3000		
1G	SURFACE 6" DIAMETER LED DOWNLIGHT	JUNO	L6-2335-G3/L600P-CL-WH	120	2300	24	3500		
1H	RECESSED 6" DIAMETER LED DOWNLIGHT	JUNO	L6-2335-G3-FDL/L600P-CL-WH	120	2300	24	3500	10	
1H1	RECESSED 6" DIAMETER LED DOWNLIGHT C/W DIMMING	JUNO	L4-0835U-G3/L400P-DL-WH	120	645	8	3500	11	
1J	RECESSED 4" DIAMETER LED DOWNLIGHT	LITHONIA	ZL2N L48 5000LM MDD 35K 80CRI WH	120	5000	72	3500	5	
1K	SUSPENDED 4' LED STRIP LIGHT	LITHONIA	2TL2 33L FW A12 LP835	120	3300	29	3500		
1L	RECESSED 2'x2' LED C/W K12 LENS	LITHONIA	TL4 30L FW A12 LP835/DGA14	120	3000	30	3500	12	
1M	RECESSED 1'x4' LEDC/W PLASTER FRAME & K12 LENS	LITHONIA	WL4 40L LP835	120	4000	42	3500	13	
1N	SUSPENDED 4' LED LENSED STRIP LIGHT								

- NOTES
- PROVIDE LED REPLACEMENT LAMPS IN EXISTING COVE LUMINAIRES -- EXISTING LAMPS ARE T5/54WHO (2 PER LUMINAIRE).
 - REPLACE EXISTING LUMINAIRES IN SAME LOCATION.
 - CONFIRM CORD LENGTH.
 - REPLACE EXISTING LUMINAIRES ON EXISTING POLES.
 - SUSPEND AT +2400 TO BOTTOM OF LUMINAIRE.
 - C/W BUILT-IN OCCUPANCY SENSOR (DIMS TO 10% WHEN UNOCCUPIED).
 - WALL MOUNT + +2400.
 - VALANCE MOUNTED -- REFER TO ARCHITECTURAL DRAWINGS FOR MOUNTING HEIGHTS.
 - WALL MOUNT TIGHT TO TOP OF MIRROR.
 - DIMMING DRIVER TO BE COMPATIBLE WITH DIMMER SWITCHING/CONTROLS.
 - MOUNT IN BULKHEAD
 - C/W DRYWALL GRID ADAPTER.
 - CHAIN SUSPEND LEVEL WITH EXISTING LUMINAIRES.
 - NEW LUMINAIRES TO MATCH EXISTING THAT HAVE PREVIOUSLY UPGRADED. CONFIRM EXACT CATALOG NUMBERS PRIOR TO ORDERING.

EQUIPMENT SCHEDULE									
NO.	MECH. REF.	DESCRIPTION	LOAD	VOLT	Ø	CCT. NO.	BKR. SIZE	FEEDER	NOTE
1	FC-1	FAN COIL UNIT	270W	208	1	NS7-2,4	2P-15	2#12	
2	FC-2	FAN COIL UNIT	360W	208	1	NS7-6,8	2P-15	2#12	
3	FC-3	FAN COIL UNIT	297W	208	1	NS7-10,12	2P-15	2#12	
4	FC-4	FAN COIL UNIT	270W	208	1	NS7-14,16	2P-15	2#12	
5	FC-5	FAN COIL UNIT	207W	208	1	NS7-18,20	2P-15	2#12	
6	CU-1	OUTDOOR VRF UNIT	39.0A	208	3	NP4-13,15,17	3P-60	3#6	1
7	CU-2	OUTDOOR VRF UNIT	39.0A	208	3	NP4-14,16,18	3P-60	3#6	1
8	HRV-1	HEAT RECOVERY VENTILATOR	201.5HP	208	3	NS3-2,4,6	3P-20	3#12	
9									
10									
11									
12									
13	TK-2	GLYCOL FILL TANK	0.7A	120	1	NS7-22	1P-15	2#12	3
14	EF-2	EXHAUST FAN (RE & RE)		208	3	NP5-34,36,38	3P-15	3#12	4
15	EXH-F1	EXHAUST FAN	50W	120	1	NP5-40	1P-15	2#12	5
16	EXH-F2	EXHAUST FAN	49W	120	1	NP5-40	1P-15	2#12	6
17	-	WHEELCHAIR LIFT		120	1	NS3-22	1P-20	2#12	7
18	UH-15	UNIT HEATER (RELOCATED)		120	1	NP4-32B	1P-15(EX)	2#12	8
19	UH-17	UNIT HEATER (RELOCATED)		120	1	NP4-39	1P-15(EX)	2#12	8
21									
22	EDH-2	DUCT HEATER	25.0KW	208	3	NP4-1,3,5	3P-90(EX)	3#3 (EX)	9

- NOTES
- PROVIDE LIQUID TIGHT FLEXIBLE CONNECTION TO UNIT.
 -
 - PROVIDE DUPLEX RECEPTACLE FOR CONNECTION OF PUMP.
 - PROVIDE NEW FEEDER AND RECONNECT.
 - PROVIDE CONTROL RELAY AND CONNECT TO OPERATE WHEN LIGHTS ARE ON.
 - PROVIDE TIMER SWITCH EQUAL TO LEVITON 6260M (10-20-30-60 MINUTE ELECTRONIC), WHITE FINISH.
 - PROVIDE FUSED DISCONNECT AND CONNECTION TO CONTROLLER.
 - EXTEND EXISTING CIRCUIT AND RECONNECT.
 - DISCONNECT EXISTING AND RECONNECT NEW DUCT HEATER.