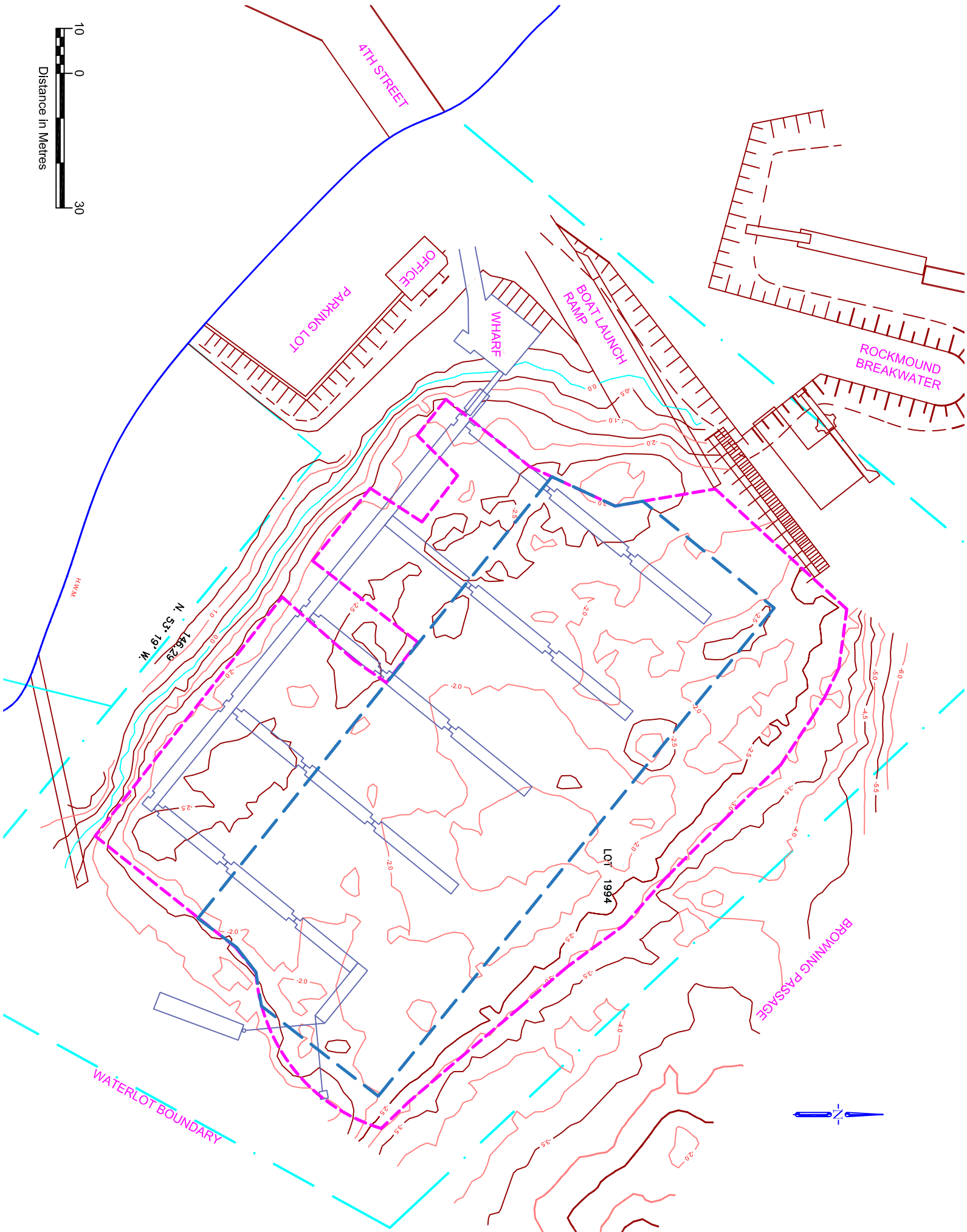


- GENERAL NOTES**
- NOT AN AS-BUILT DRAWING.
 - ALL DIMENSIONS ARE IN METRES.
 - ELEVATIONS ARE IN METRES REFERENCED TO LOCAL CHART DATUM.
 - BATHYMETRY BASED ON SOUNDING SURVEY BY BALANCED ENVIRONMENTAL SERVICES INC. DECEMBER 13, 2014.


- DREDGING NOTES**
- TOTAL DREDGE AREA: 7,700 SQ. METRES.
(14,000 SQ. METERS W/ OPTIONAL DREDGE AREA)
 - ESTIMATED DREDGE VOLUME: 9,000 CUBIC METRES.
(17,000 CUBIC METERS W/ OPTIONAL DREDGE VOLUME)
 - FINAL DREDGE GRADE: -3.0m CHART DATUM.
 - DREDGE SUBGRADE (OVERDREDGE ALLOWANCE): 0.3m
 - ESTIMATED DREDGE MATERIAL COMPOSITION:
50% SAND
40% SILT
10% CLAY
 - DREDGE MATERIAL TO BE DISPOSED OF VIA OCEAN DISPOSAL AT THE NEWCOMBE CHANNEL SITE LOCATED AT 48.91140°N, 125.48970°W.

- LEGEND**
- EXISTING STRUCTURE
 - MAJOR CONTOUR (1.0m)
 - MINOR CONTOUR (0.5m)
 - FLOAT SYSTEM OUTLINE
 - DREDGE AREA BOUNDARY
 - OPTIONAL DREDGE AREA BOUNDARY

FOR TENDER



Client		Author		Checked by		PROJECT	
					Drawn by	DREDGING PLAN & LOCATION TOFINO (4TH STREET) DREDGING TOFINO, BRITISH COLUMBIA	
					RC		
					Date		
					31-AUG-16		
					Scale		
					1:1000	DWG. No. TOF-BMD-001	
					Inspectors		
Ref. No.	REFERENCE				Paper		
					11X17		

 Fisheries and Oceans
Pêches et Océans
Small Craft
Harbours Branch