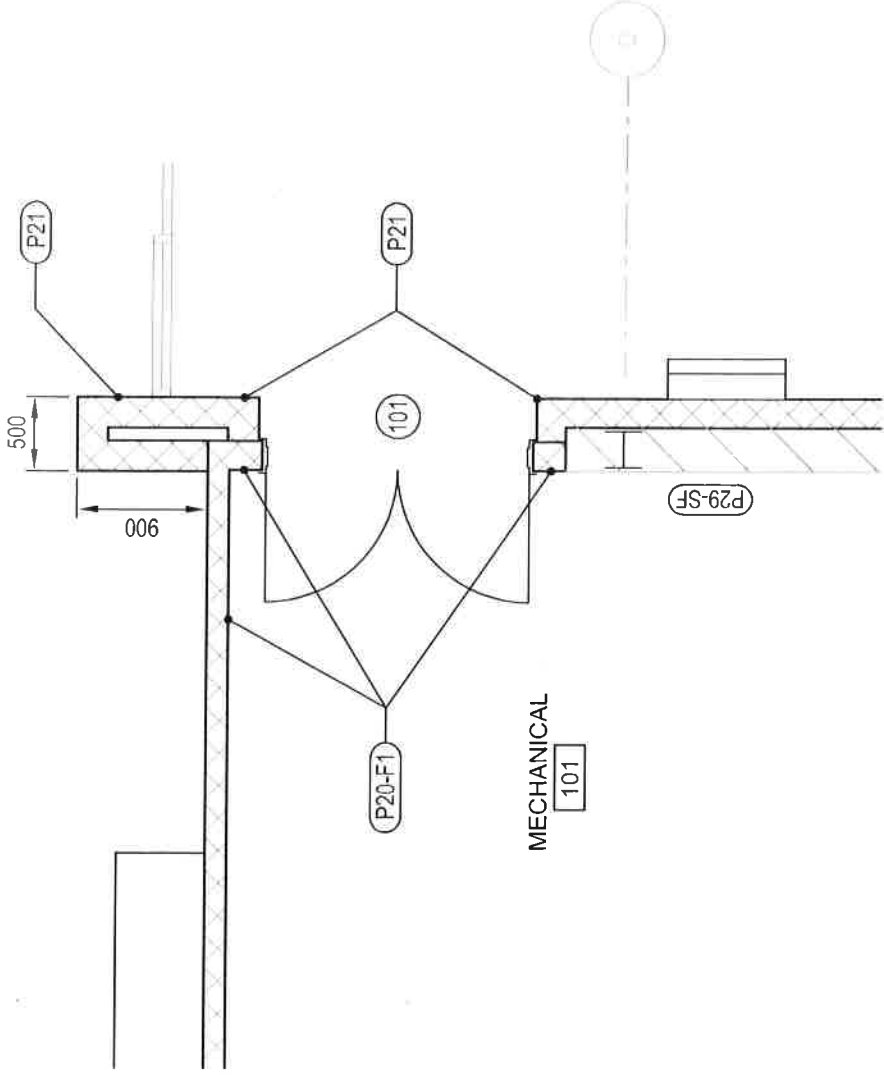


NOTES:

1. SEE SHEET A-111 FOR PARTITION TYPES AND SHEET A-702 FOR WALL FINISHES.

2. SEE SHEET A-601 FOR DOOR SCHEDULE.



PARTIAL FLOOR PLAN, LEVEL ONE

SCALE 1:50

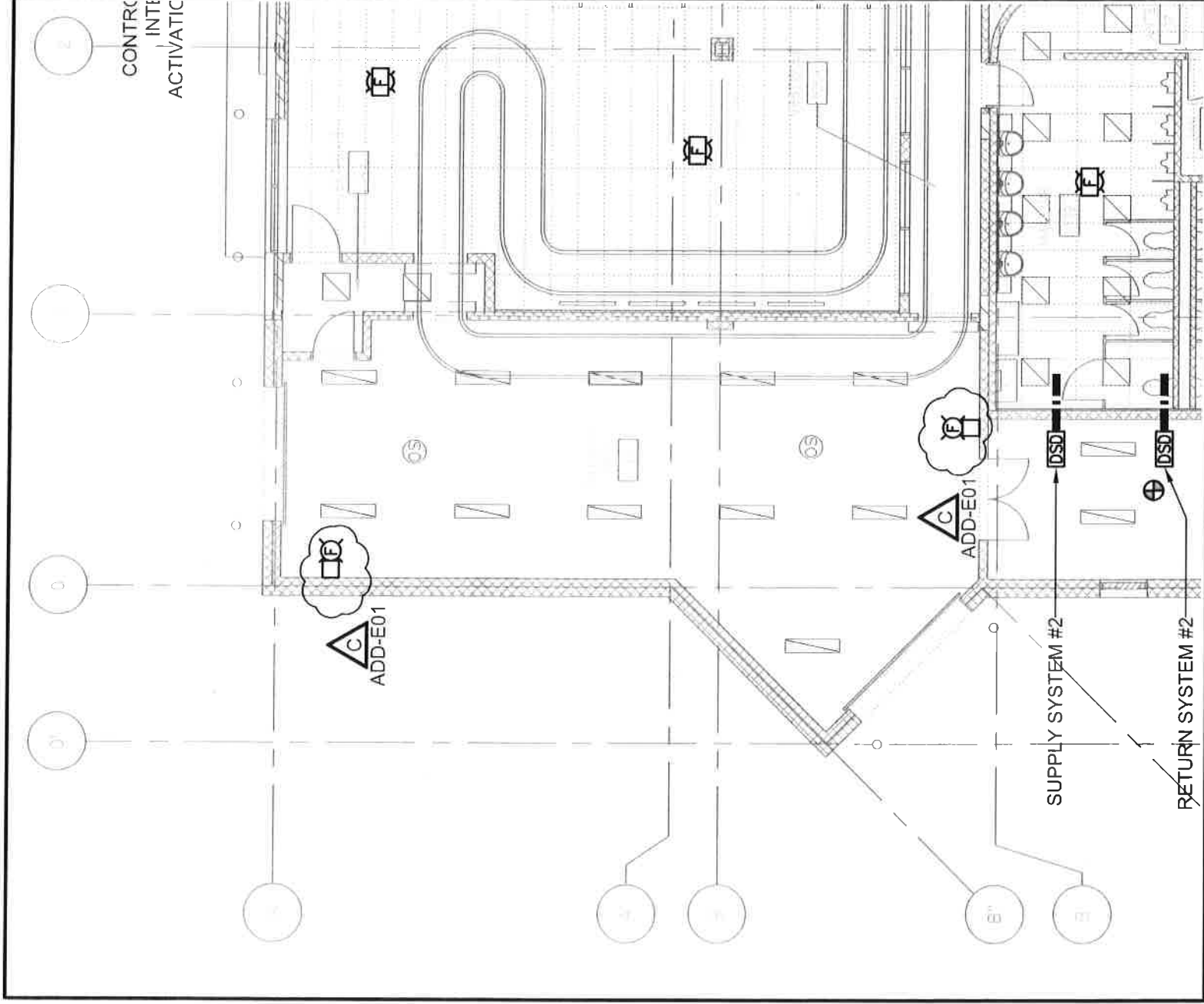
© COPYRIGHT ARCHITECTURE49 INC. 2017		Scale 1:50	
Project WABUSH ATB RENOVATION		Date JUNE 1, 2017	
Title DOOR 101 REVISION		Project No. R.076412.001	
ARCHITECTURE 49		Drawn JG	Sheet No. ASK-1


341 Freshwater Road, Suite 202 • PO Box 13156 • St. John's, NL A1B 4A4
Tel.: (709) 726-1342 • Facsimile: (709) 726-1349
www.architecture49.com

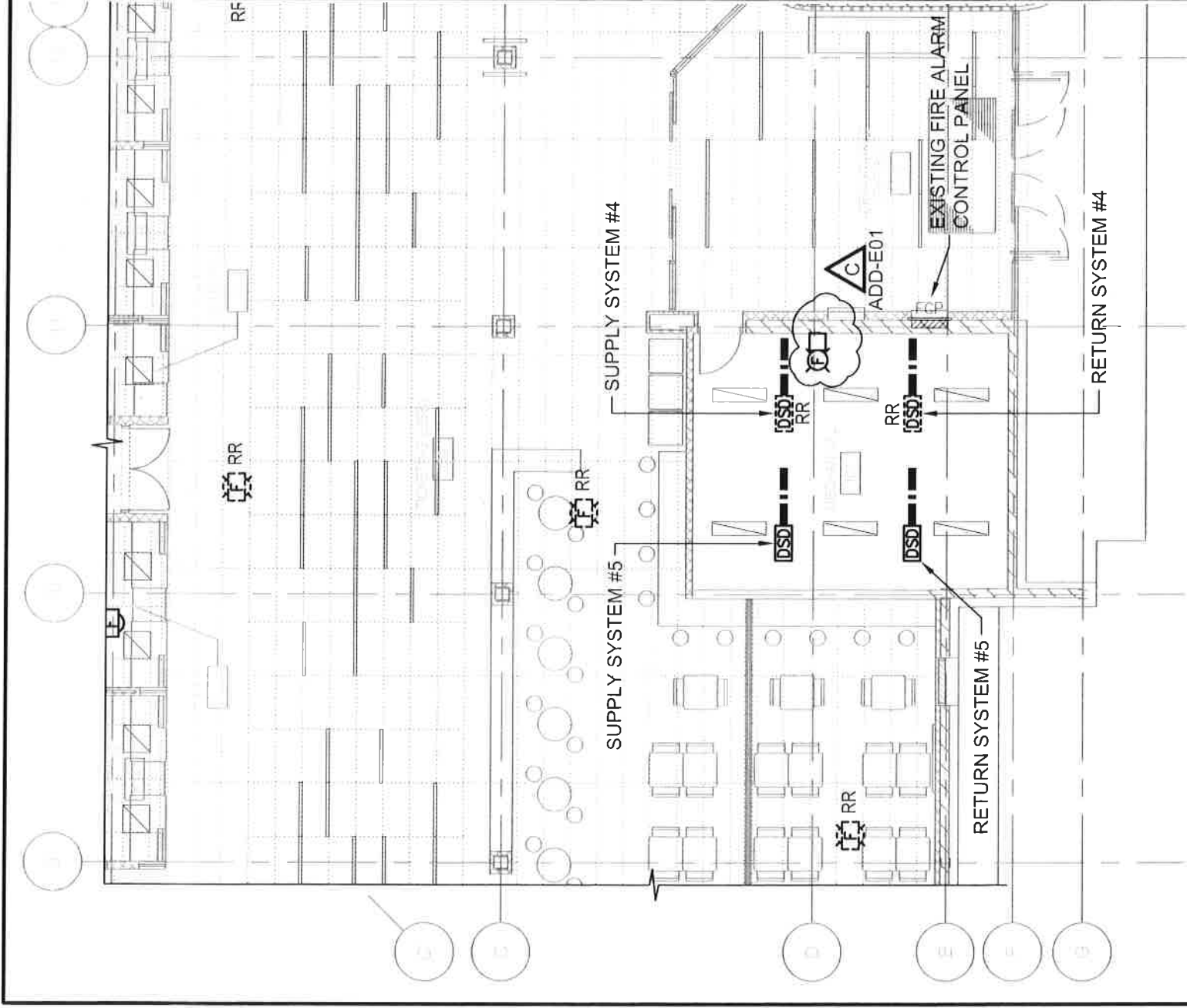
FINISH MATERIAL GROUP DEFINITIONS		
DESIGNATION	FINISH MATERIAL TAG/DESCRIPTION	NOTES
A	SS1 INTEGRAL SOLID SURFACE COUNTERTOP WITH WATERFALL FACE	REFERENCE MILLWORK DRAWING DETAILS FOR FURTHER CLARITY OF FINISH MATERIAL PLACEMENTS
	PL1 MILLWORK FACE ENDS & TOP	
	PL3 FLOOR CABINET EXTERIOR BODY, OPEN INTERIOR BODY AND HIDDEN INTERIOR BODY	
	PL4 SUPPORT LEGS	
	MCP1 DRAWER/DOOR FACES & INSIDE, BACK & SIDEWALL KNEE SPACE	
	STAINLESS STEEL FLOOR BASE	
	STAINLESS STEEL END GUARD WALL PROTECTION	
	STAINLESS STEEL SIDEWALL PROTECTION	
B	PL4 PLASTIC LAMINATE POSTFORM COUNTERTOP C/W BACKSPLASH (UNLESS NOTED OTHERWISE)	
	MCP1 EXTERIOR CABINET BODIES & OPEN INTERIOR BODIES	
	MCP2 HIDDEN INTERIOR BODIES	
	STAINLESS STEEL FLOOR BASE	
C	SS1 INTEGRAL SOLID SURFACE COUNTERTOP & FACE c/w INTEGRAL BACKSPLASH	
	PL4 GABLE ENDS	
D	SS1 SOLID SURFACE COUNTERTOP C/W INTEGRAL BACKSPLASH	REFERENCE MILLWORK DRAWING DETAILS FOR FURTHER CLARITY OF FINISH MATERIAL PLACEMENTS
	HW1 HARDWOOD APRON	
	SCP1 DECORATIVE RESIN PANEL	
E	STAINLESS STEEL (CABINETS AND COUNTERTOP)	
F	SS1 SOLID SURFACE COUNTERTOP WITH WATERFALL FACE, OPEN INTERIOR BODIES/OPEN SHELVES	REFERENCE MILLWORK DRAWING DETAILS FOR FURTHER CLARITY OF FINISH MATERIAL PLACEMENTS
	PL1 MILLWORK FACE/ENDS, EXTERIOR CABINET BODIES	
	PL3 HIDDEN INTERIOR BODIES	
	ML1 ACCENT STRIP	
	STAINLESS STEEL FLOOR BASE	
G	SS1 SOLID SURFACE COUNTERTOP, OPEN INTERIOR SURROUND, MILLWORK FACE & ENDS, OPEN SHELVES	REFERENCE MILLWORK DRAWING DETAILS FOR FURTHER CLARITY OF FINISH MATERIAL PLACEMENTS
	PL1 MILLWORK FACE, OPEN SHELVES, EXTERIOR CABINET BODIES	
	PL3 HIDDEN INTERIOR BODIES	
	MCP2 BACKWALL	
	STAINLESS STEEL FLOOR BASE	
FOR ALL MILLWORK, IN ADDITION TO DRAWINGS, ALSO REFER TO SPECIFICATION FOR CONSTRUCTION MATERIALS.		


© COPYRIGHT ARCHITECTURE49 INC. 2017

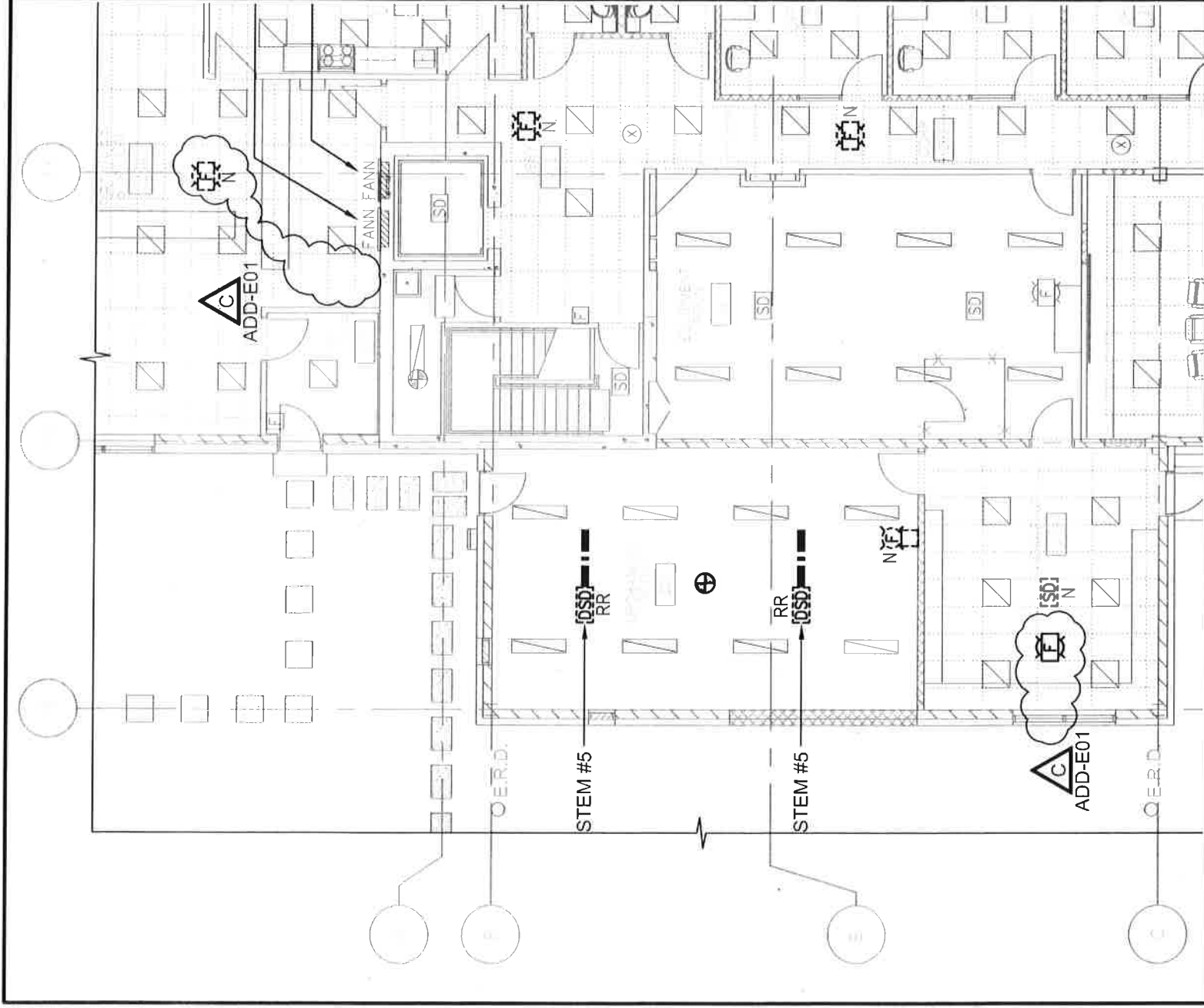
ARCHITECTURE 49	Project	WABUSH ATB RENOVATION			Scale	NTS
					Date	JUNE 16, 2017
	Title	FINISH MATERIAL GROUP DEFINITIONS SCHEDULE			Project No	R.076412.001
					Drawn	AM
					Sheet No	ASK-2




 Public Works and Government Services Canada	Travaux publics et Services gouvernementaux Canada	project WABUSH ATB RENOVATION WABUSH AIRPORT WABUSH, NL	Drawing title				Titre du dessin		designed B.H.	conçu B.H.	date APRIL 5 2017
			FLOOR PLAN LEVEL 1 - FIRE ALARM NEW				drawn J-P.D.	dessiné J-P.D.	date APRIL 5 2017		
							Tender			approved J.H.	approuvé J.H.
			PWGSC Project Manager				Administrateur de projets TPSCG				Submission
project number			no. du projet		drawing no.		no. du dessin				
R.076412.001			R.076412.001		ADD-E01 - SK-E03.1		ADD-E01 - SK-E03.1				



<div>Public Works and Government Services Canada</div> <div>Travaux publics et Services gouvernementaux Canada</div>		<div>project</div> <div>WABUSH ATB RENOVATION WABUSH AIRPORT WABUSH, NL</div> <div>project</div>	
Drawing title		Titre du dessin	
FLOOR PLAN LEVEL 1 - FIRE ALARM NEW		B.H. drawn J-P.D. approved J.H.	
date		APRIL 5 2017	
designed		B.H.	
drawn		J-P.D.	
approved		J.H.	
date		APRIL 5 2017	
designed		B.H.	
drawn		J-P.D.	
approved		J.H.	
date		APRIL 5 2017	
Tender		Soumission	
PWGSC Project Manager		Administrateur de projets TPSCG	
project number		drawing no.	
R.076412.001		no. du projet	
ADD-E01 - SK-E03.2		drawing no.	
ADD-E01 - SK-E03.2		no. du dessin	



<div><div>Public Works and Government Services Canada</div></div> <div><div>Travaux publics et Services gouvernementaux Canada</div></div>	<div>Drawing title</div> <div>FLOOR PLAN LEVEL 2 - FIRE ALARM NEW</div>						<div>designed</div> <div>B.H.</div>	<div>conçu</div>	<div>date</div> <div>APRIL 5 2017</div>
	<div>project</div> <div>WABUSH ATB RENOVATION WABUSH AIRPORT WABUSH, NL</div> <div>project</div>						<div>drawn</div> <div>J-P.D.</div>	<div>dessiné</div>	<div>date</div> <div>APRIL 5 2017</div>
							<div>approved</div> <div>J.H.</div>	<div>approuvé</div>	<div>date</div> <div>APRIL 5 2017</div>
							<div>Tender</div> <div>PWGSC Project Manager</div> <div>project number</div> <div>R.076412.001</div>		
<div>no. du projet</div> <div>R.076412.001</div>						<div>no. du dessin</div> <div></div>			