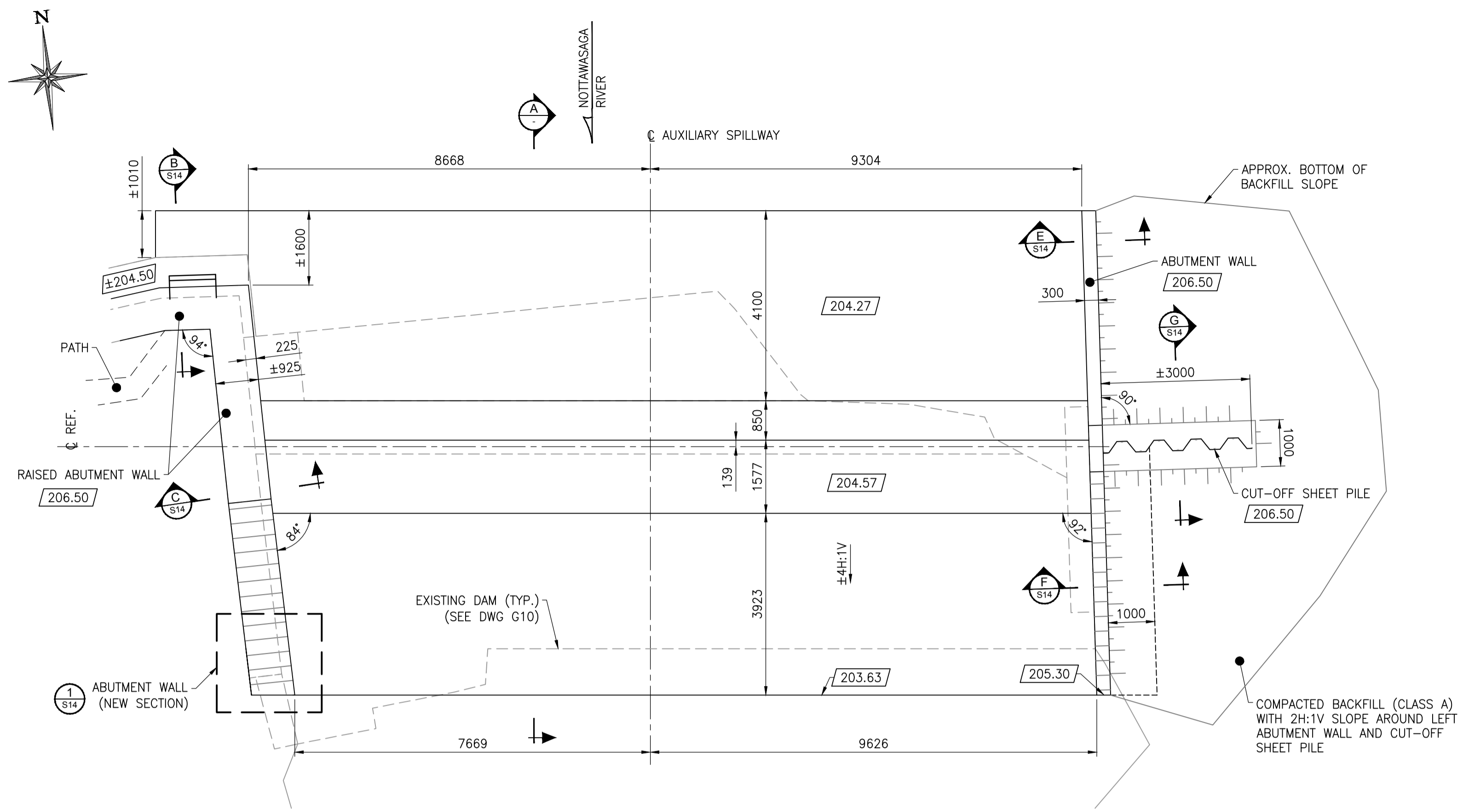
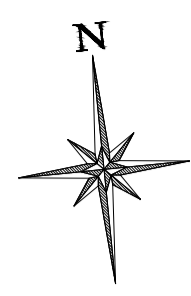
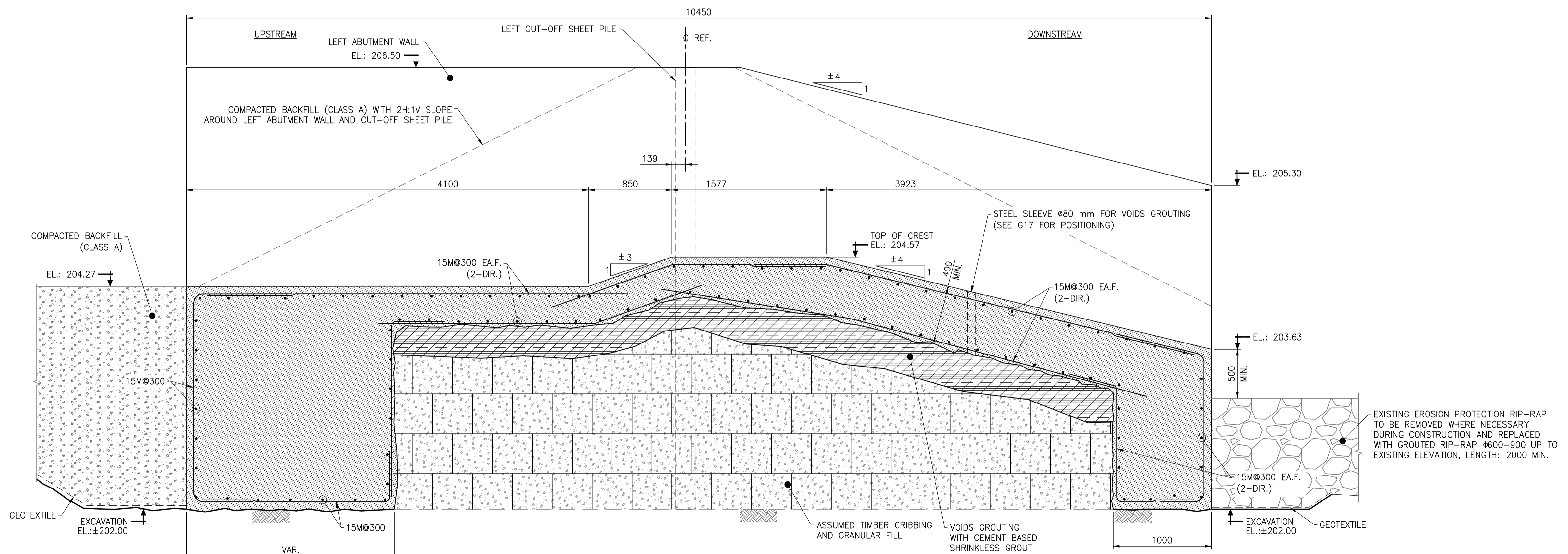


THIS SCALE TO BE USED TO OBTAIN A SCALE FACTOR FOR MEASURES IF THIS DRAWING IS NOT PRINTED ON A SIZE PAPER. MEASURES OBTAINED FROM SCALING ARE APPROXIMATE AND TO BE USED FOR INFORMATION ONLY.

Folder: Z:\Cima-2018\Structures\ENR\ENR\00492F - Nicolson Dam Rehabilitation\Construction\00_Plan_1a.dwg / Layout: S13 / Last save: 2017/06/02, 13:52 / Printed: 2017/06/02, 15:53

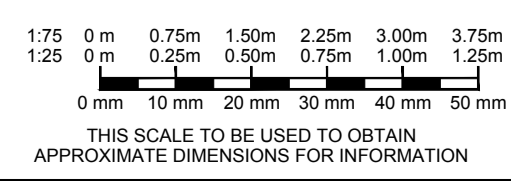


Plan - Auxiliary Spillway
1:75



Section - Auxiliary Spillway A
1:25

Notes
1. SEE DWG G02 FOR DRAWING LIST, GENERAL NOTES, ABBREVIATIONS AND LEGEND.



No	Revision	Date	Eng. / cad
1	Issued for bid and authorization	2017/06/05	M.G./K.N.

Client:	Fisheries and Oceans / Pêches et Océans Canada	Project number:	A000492F
Designed by:	C.G.-Pagé, P.Eng.	Drawn by:	K.Nonen, Tech.
Verified by:	M.Grignon, P.Eng.	Revision:	A
Drawing title:	Auxiliary Spillway Plan and Section	Drawing N°:	S13

This plan may not be used for construction or manufacturing purpose, unless specifically submitted, signed and stamped for that purpose.