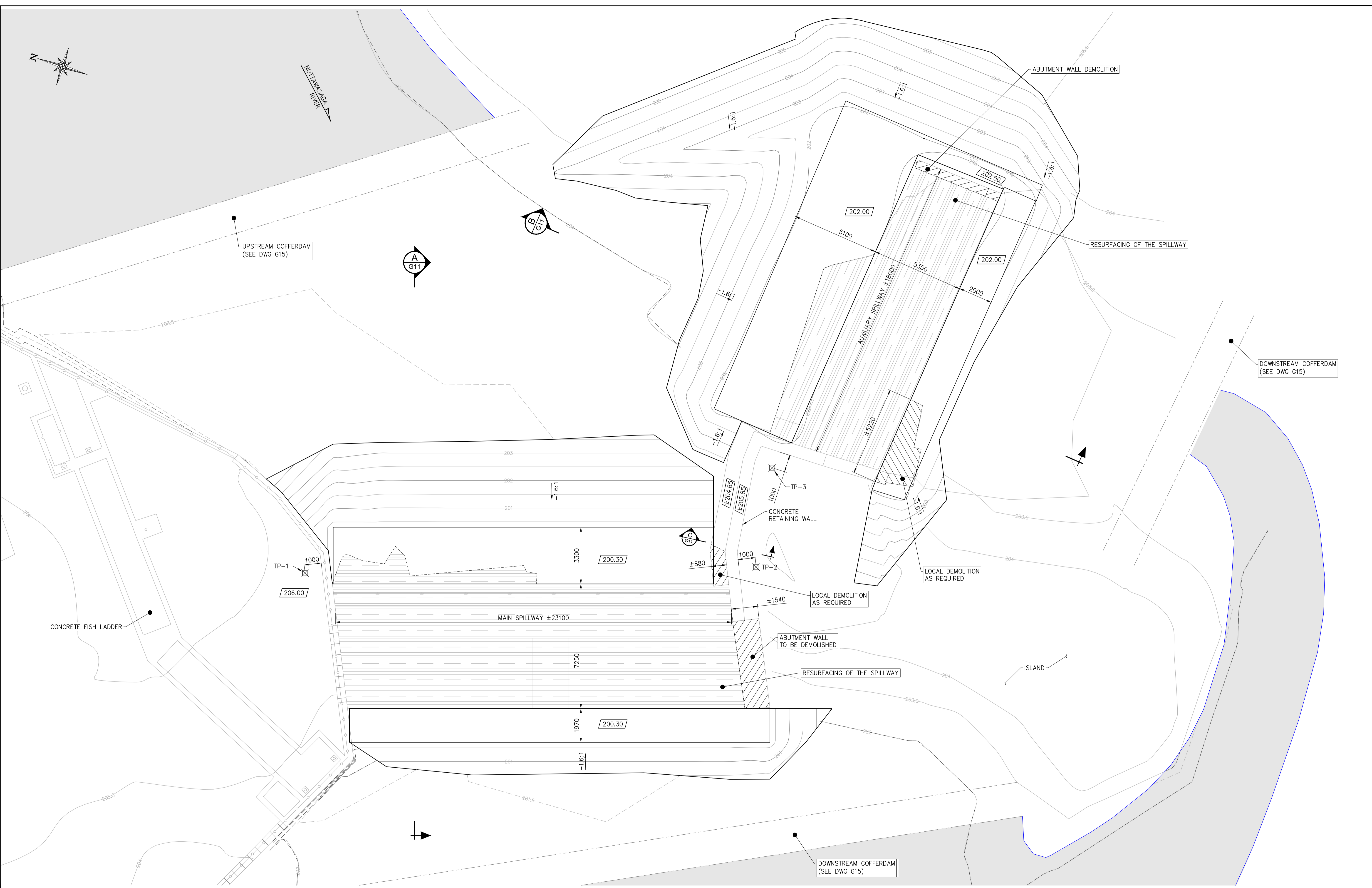


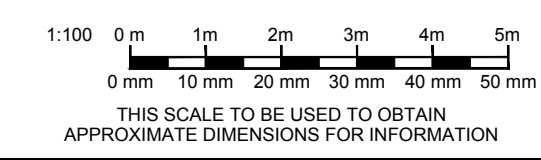
THIS SCALE TO BE USED TO OBTAIN A SCALE FACTOR FOR MEASURES IF THIS DRAWING IS NOT PRINTED ON A SIZE PAPER. MEASURES OBTAINED FROM SCALING ARE APPROXIMATE AND TO BE USED FOR INFORMATION ONLY.
 THIS SCALE TO BE USED TO OBTAIN A SCALE FACTOR FOR MEASURES IF THIS DRAWING IS NOT PRINTED ON A SIZE PAPER. MEASURES OBTAINED FROM SCALING ARE APPROXIMATE AND TO BE USED FOR INFORMATION ONLY.
 Folder: Z:\Cima-2015\Structure\NIS_ENERGIE\A000492F - Nicolston Dam Rehabilitation\Concept\00_Plan_10_inprogress
 Filename: A000492F-G10-G11-C30.dwg / Layout: G10 / Last save: 2017/08/17, 13:19 / Printed: 2017/08/02, 13:32
 Titleblock At origin (cainouchi.cma - enA1H_2016-12-22.dwg)



Notes

1. SEE DRAWING LIST, GENERAL NOTES, ABBREVIATIONS AND LEGEND ON DWG G02.

Plan
1:100



| No | Revision | Date | ing / cad |
|----|----------------------------------|------------|-----------|
| 1 | Issued for bid and authorization | 2017/06/05 | M.G./K.N. |

CIMA

Cima+
740 Notre-Dame Street West, Suite 900
Montréal, Québec, H3C 3X6
T.: 514 337-2462
F.: 514 281-1632
www.cima.ca

Project Manager:
M.Grignon, P.Eng.

Client: Fisheries and Oceans Canada / Pêches et Océans Canada

Project title: **Nicolston Dam Rehabilitation**

Drawing title: **Demolition and Excavation Plan**

Project number: A000492F
Designed by: M.Grignon, Eng.
Drawn by: K.Nonen, Tech.
Verified by: M.Grignon, P.Eng.
Revision: A
Drawing N°: **G10**