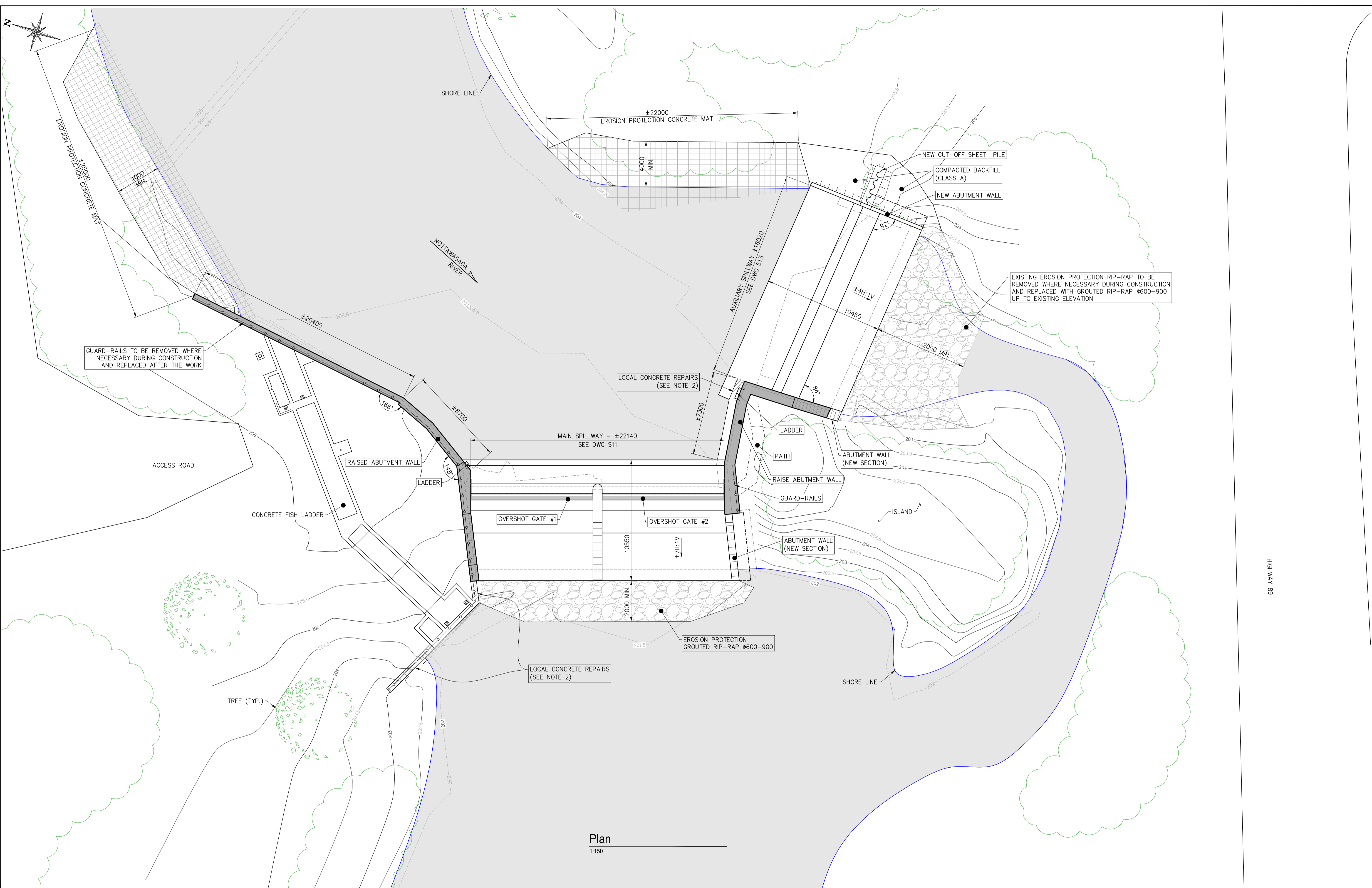


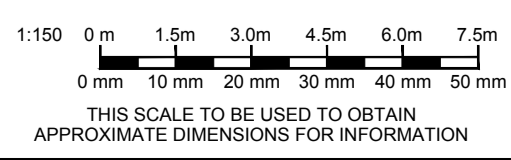
THIS SCALE TO BE USED TO OBTAIN A SCALE FACTOR FOR MEASURES IF THIS DRAWING IS NOT PRINTED ON A SIZE PAPER. MEASURES OBTAINED FROM SCALING ARE APPROXIMATE AND TO BE USED FOR INFORMATION ONLY.

F:\Z:\Cima-2015\Structure\ENERGIE\000492F - Nicolston Dam Rehabilitation\Concept\00_Plan_10.dwg / Layout: S10 / Last save: 2017/02/24, 13:30 / Printed: 2017/08/02, 13:35



Plan
1:150

- Notes**
- SEE DRAWING LIST, GENERAL NOTES, ABBREVIATIONS AND LEGEND ON DWG G02.
 - LOCAL CONCRETE REPAIRS TO BE COORDINATED ON SITE WITH THE ENGINEER.



No	Revision	Date	By	Checked
A	Issued for bid and authorization	2017/06/05	M.G./A.G.H.	

CIMA
Cima+
740 Notre-Dame Street West, Suite 900
Montreal, Quebec, H3C 3X6
T.: 514 337-2462
F.: 514 281-1632
www.cima.ca

Client: Fisheries and Oceans / Pêches et Océans Canada
Project title: Nicolston Dam Rehabilitation
Drawing title: General Layout Plan

Project number: A000492F
Designed by: M. Grignon, Eng.
Drawn by: A. Guérin-H., Tech.
Verified by: M. Grignon, P. Eng.
Revision: A
Drawing N°: S10