

1. ROAD SURFACES TO BE KEPT CLEAN & BE PROTECTED FOR DURATION OF CONSTRUCTION. ALL DAMAGE TO BE MADE GOOD.
2. ALL TRAFFIC CONTROL REQUIRED FOR CONSTRUCTION IS THE RESPONSIBILITY OF THE CONTRACTOR.
3. CONTRACTOR IS TO REVIEW ALL DRAWINGS AND NOTE ANY DISCREPANCIES TO PARKS CANADA PRIOR TO BID SUBMISSION.
4. EXISTING GRADES SHOWN ON TENDER DRAWINGS ARE FOR INFORMATION ONLY & ARE TAKEN FROM DESIGN DRAWINGS BY HARBOURSIDE ENGINEERING FOR BRIDGE WORKS.
5. AS-BUILT DRAWINGS WILL BE PROVIDED TO THE CONTRACTOR AT STARTUP. ANY DISCREPANCIES THAT IMPACT TENDER PRICES ARE TO BE INDICATED TO PARKS CANADA PRIOR TO START OF CONSTRUCTION. EXTRAS WILL NOT BE PAID FOR DISCREPANCIES NOT NOTED PRIOR TO THE START OF CONSTRUCTION.
6. CONTRACTOR RESPONSIBLE FOR EROSION AND SEDIMENT CONTROL MEASURES TO THE SATISFACTION OF PARKS CANADA REQUIREMENTS.
7. ALL EXISTING TREES ARE TO BE PROTECTED. NO TREES ARE TO BE REMOVED AS PART OF THIS CONTRACT

LEGEND

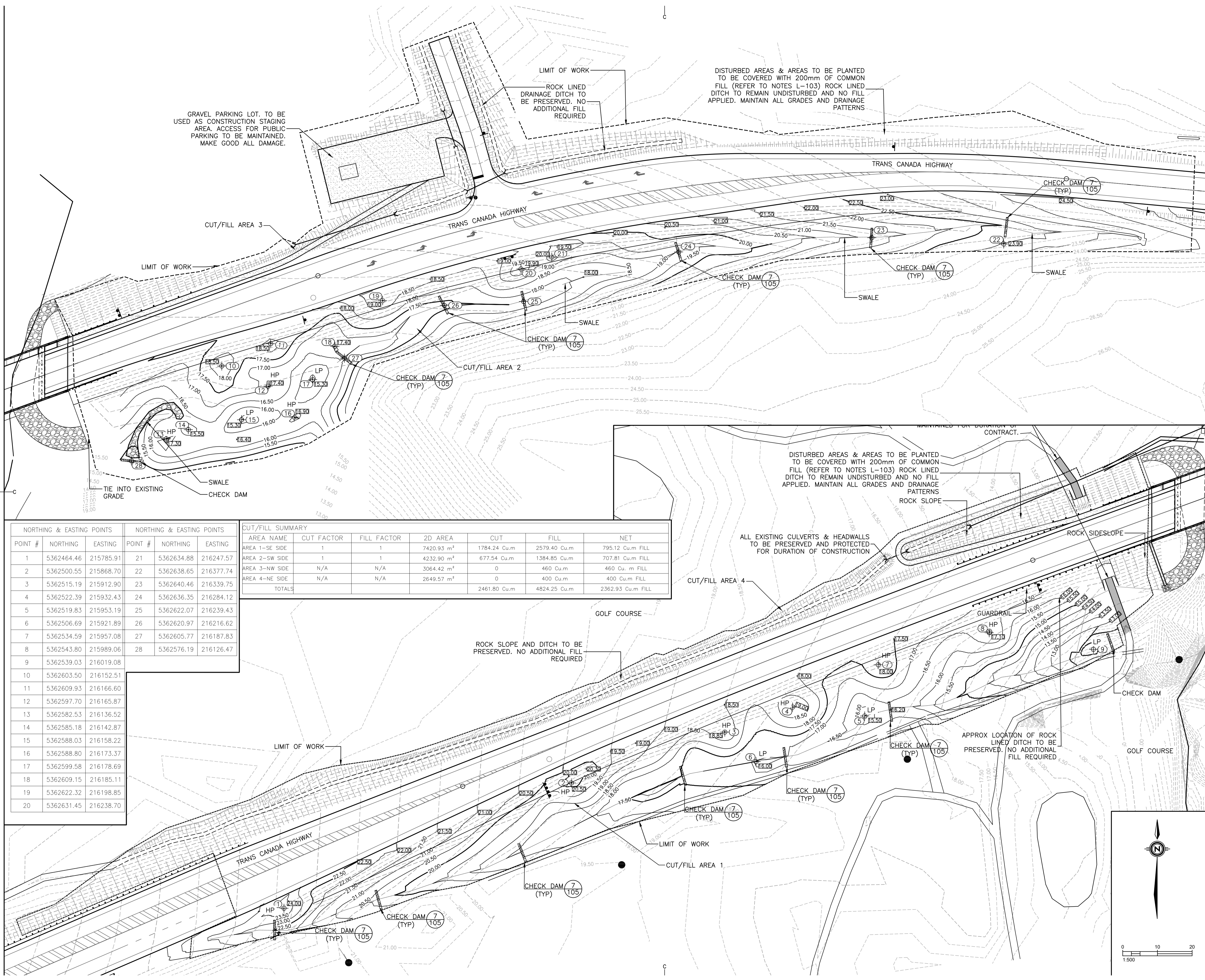
---	LIMIT OF AREA DISTURBED BY BRIDGE WORKS
---	LIMIT OF WORK THIS CONTRACT

revisions	description	date
5	RE-ISSUED FOR TENDER	6-20 2017
4	RE-ISSUED FOR TENDER	4-25 2017
3	RE-ISSUED FOR TENDER	3-21 2017
2	ISSUED FOR TENDER	2-2 2017
1	PRE-TENDER REVIEW	12-13 2016

**TERRA NOVA NATIONAL PARK
NORTHWEST RIVER
BRIDGE REHABILITATION**

EXISTING CONDITIONS

designed	KP/DS/RL	conçu
date	MARCH 2016	
drawn	KP/DS	dessiné
date	MARCH 2017	
approved	RL	approuvé
date	MARCH 2017	
Tender	DARREN FITZGERALD	Soumission
	Parks Project Manager / Administrateur de projets Parcs	
project number		no. du projet



LEGEND

- LIMIT OF AREA DISTURBED BY BRIDGE WORKS
- LIMIT OF WORK THIS CONTRACT
- HP HIGH POINT
- LP LOW POINT
- ⊕ NE COORDINATE POINT
- ⓪ PROPOSED ELEVATION

NORTHING & EASTING POINTS		NORTHING & EASTING POINTS			
POINT #	NORTHING	EASTING	POINT #	NORTHING	EASTING
1	5362464.46	215785.91	21	5362634.88	216247.57
2	5362500.55	215868.70	22	5362638.65	216377.74
3	5362515.19	215912.90	23	5362640.46	216339.75
4	5362522.39	215932.43	24	5362636.35	216284.12
5	5362519.83	215953.19	25	5362622.07	216239.43
6	5362506.69	215921.89	26	5362620.97	216216.62
7	5362534.59	215957.08	27	5362605.77	216187.83
8	5362543.80	215989.06	28	5362576.19	216126.47
9	5362539.03	216019.08			
10	5362603.50	216152.51			
11	5362609.93	216166.60			
12	5362597.70	216165.87			
13	5362582.53	216136.52			
14	5362585.18	216142.87			
15	5362588.03	216158.22			
16	5362588.80	216173.37			
17	5362599.58	216178.69			
18	5362609.15	216185.11			
19	5362622.32	216198.85			
20	5362631.45	216238.70			

CUT/FILL SUMMARY						
AREA NAME	CUT FACTOR	FILL FACTOR	2D AREA	CUT	FILL	NET
AREA 1--SE SIDE	1	1	7420.93 m ²	1784.24 Cu.m	2579.40 Cu.m	795.12 Cu.m FILL
AREA 2--SW SIDE	1	1	4232.90 m ²	677.54 Cu.m	1384.85 Cu.m	707.81 Cu.m FILL
AREA 3--NW SIDE	N/A	N/A	3064.42 m ²	0	460 Cu.m	460 Cu.m FILL
AREA 4--NE SIDE	N/A	N/A	2649.57 m ²	0	400 Cu.m	400 Cu.m FILL
TOTALS				2461.80 Cu.m	4824.25 Cu.m	2362.93 Cu.m FILL

revisions	project	date
5	RE--ISSUED FOR TENDER	6-20 2017
4	RE--ISSUED FOR TENDER	4-25 2017
3	RE--ISSUED FOR TENDER	3-21 2017
2	ISSUED FOR TENDER	2-2 2017
1	PRE--TENDER REVIEW	12-13 2016

**TERRA NOVA NATIONAL PARK
NORTHWEST RIVER
BRIDGE REHABILITATION**

GRADING PLAN

designed	KP/DS	conçu
date	MARCH 2016	
drawn	KP/DS	dessiné
date	MARCH 2017	
approved	RL	approuvé
date	MARCH 2017	
Tender	DARREN FITZGERALD	Soumission
Project Manager	Administrateur de projets Parcs	
project number		no. du projet

1. PLANTING BED LIMITS ARE APPROXIMATE. NO TREES ARE TO BE REMOVED AS PART OF THIS CONTRACT. LIMIT OF PLANTING TO BE ADJUSTED ACCORDINGLY TO CREATE DESIRED 'FEATHERED EDGE' INSTEAD OF A HARD LINE
2. TREES ARE TO BE PLANTED IN GROUPINGS, AS SHOWN, ALONG EDGE OF NEW PLANTING BEDS. LIMITS AND LOCATIONS MAY VARY PER NOTE 1.
3. ALL DISTURBED AREAS IN CONTRACT BOUNDARY TO BE COVERED WITH COMMON FILL MIX TO A DEPTH OF 200mm UNLESS OTHERWISE NOTED ON THIS PLANTING PLAN.
4. 3D LINWORK FOR SITE GRADING AND PLANTING LAYOUT WILL BE PROVIDED UPON REQUEST.
5. ALL PLANT MATERIAL TO BE NATIVE AND FROM LOCAL SEED SOURCES (NEWFOUNDLAND) AND APPROVED BY PARKS CANADA.
6. PLANT MATERIAL WILL BE PURCHASED BY PARKS CANADA. CONTRACTOR RESPONSIBLE FOR TRANSPORTATION AND PLANTING.

WETLAND MULCH
 AREA TO BE COVERED WITH 50mm OF NATIVE WETLAND MATERIAL. TO BE SOURCED FROM SITE APPROVED BY PARKS CANADA - CONTRACTOR RESPONSIBLE FOR LOCATING MATERIAL SOURCE AND OBTAINING APPROVAL. APX 30CU. M REQUIRED.

ALL DISTURBED AREAS TO BE HYDROSEED WITH 40% CREEPING RED FESCUE/60%ANNUAL RYE UNLESS OTHERWISE NOTED

ALL DISTURBED AREAS TO BE HYDROSEED WITH 40% CREEPING RED FESCUE/60%ANNUAL RYE UNLESS OTHERWISE NOTED

ALL DISTURBED AREAS TO BE HYDROSEED WITH 40% CREEPING RED FESCUE/60%ANNUAL RYE UNLESS OTHERWISE NOTED

HARROW SIDESLOPES TO DEPTH OF 500mm AND CAP WITH 200mm OF COMMON FILL. DO NOT DISTURB TREES OVER 2m IN HEIGHT.

ALL DISTURBED AREAS TO BE HYDROSEED WITH 40% CREEPING RED FESCUE/60%ANNUAL RYE UNLESS OTHERWISE NOTED

ALL PLANTS ON THIS SHEET PROVIDED BY PARKS AND PLANTED BY CONTRACTOR

CONIFEROUS TREES - PURCHASED FROM WOODALE						
QUANTITY	SYMBOL	SCIENTIFIC NAME	COMMON NAME	PLANTING SIZE	CONDITION	REMARKS
200	(Symbol)	<i>Larix laricina</i>	EASTERN LARCH/TAMARACK	60cm HT	B&B	TREES TO BE PLACED IN THE QUANTITIES INDICATED. PLACEMENT OF SEEDLINGS TO BE RANDOM, IN GENERAL CONFORMANCE WITH LAYOUT SHOWN ON PLAN - REFER TO SEEDLING DETAIL ON SHEET 1-106
200	(Symbol)	<i>Picea glauca</i>	WHITE SPRUCE	60cm HT	B&B	
160	(Symbol)	<i>Pinus strobus</i>	WHITE PINE	60cm HT	B&B	
CONIFEROUS TREES - TRANSPLANTED FROM WITHIN PARK						
60	(Symbol)	<i>Picea mariana</i>	BLACK SPRUCE	1.5m HT	B&B	TREES FOR TRANSPLANT WILL BE IDENTIFIED BY PARKS CANADA, WITHIN 15 MINUTES OF SITE. SPECIES MAY VARY FROM PLANT LIST DEPENDING ON AVAILABILITY. PARKS TO BE NOTIFIED OF ANY CHANGES. REFER TO TREE TRANSPLANTING DETAIL 3-105

WETLAND MULCH
 AREA TO BE COVERED WITH 50mm OF NATIVE WETLAND MATERIAL. TO BE SOURCED FROM SITE APPROVED BY PARKS CANADA - CONTRACTOR RESPONSIBLE FOR LOCATING MATERIAL SOURCE AND OBTAINING APPROVAL. APX 30CU. M REQUIRED.

ALL DISTURBED AREAS TO BE HYDROSEED WITH 40% CREEPING RED FESCUE/60%ANNUAL RYE UNLESS OTHERWISE NOTED

GOLF COURSE

ALL DISTURBED AREAS TO BE HYDROSEED WITH 40% CREEPING RED FESCUE/60%ANNUAL RYE UNLESS OTHERWISE NOTED

WETLAND OUTLET
 ROCK LINED CHANNEL
 SEE DETAIL

ENLARGEMENT AREA
 1:500

- LEGEND**
- FALLEN LOG 300mm MIN DIA BY CONTRACTOR.
 - LANDSCAPE BOULDER CLUSTER (3 BOULDER MIN / CLUSTER) BY CONTRACTOR
 - LIMIT OF AREA DISTURBED BY BRIDGE WORKS
 - LIMIT OF WORK THIS CONTRACT
 - AREAS TO BE PLANTED BY MEMORIAL UNIVERSITY (N.I.C.)

NOTE:
 ALL PLANTS ON THIS SHEET WILL BE SUPPLIED AND PLANTED BY PROJECT CONTRACTOR. CONTRACTOR SHALL COORDINATE WITH MUN TO MAKE THE SITE AVAILABLE TO MUN STUDENTS RESPONSIBLE FOR PLANTING IN OTHER AREAS OF THE SITE. NO TRAFFIC CONTROL OR MACHINERY SHALL BE PROVIDED TO MUN AS PART OF THIS CONTRACT.

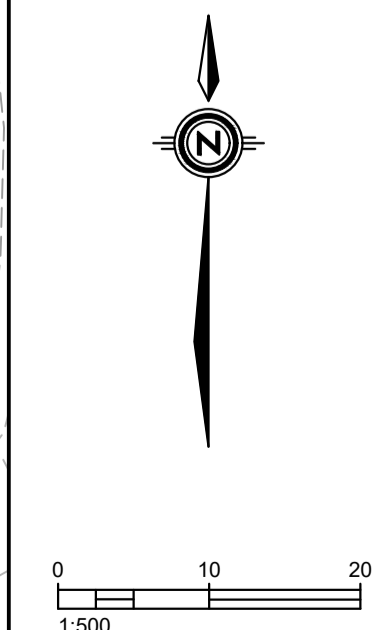
revisions	date
5	RE-ISSUED FOR TENDER 6-20 2017
4	RE-ISSUED FOR TENDER 4-25 2017
3	RE-ISSUED FOR TENDER 3-21 2017
2	ISSUED FOR TENDER 2-2 2017
1	PRE-TENDER REVIEW 12-13 2016

**TERRA NOVA NATIONAL PARK
 NORTHWEST RIVER
 BRIDGE REHABILITATION**

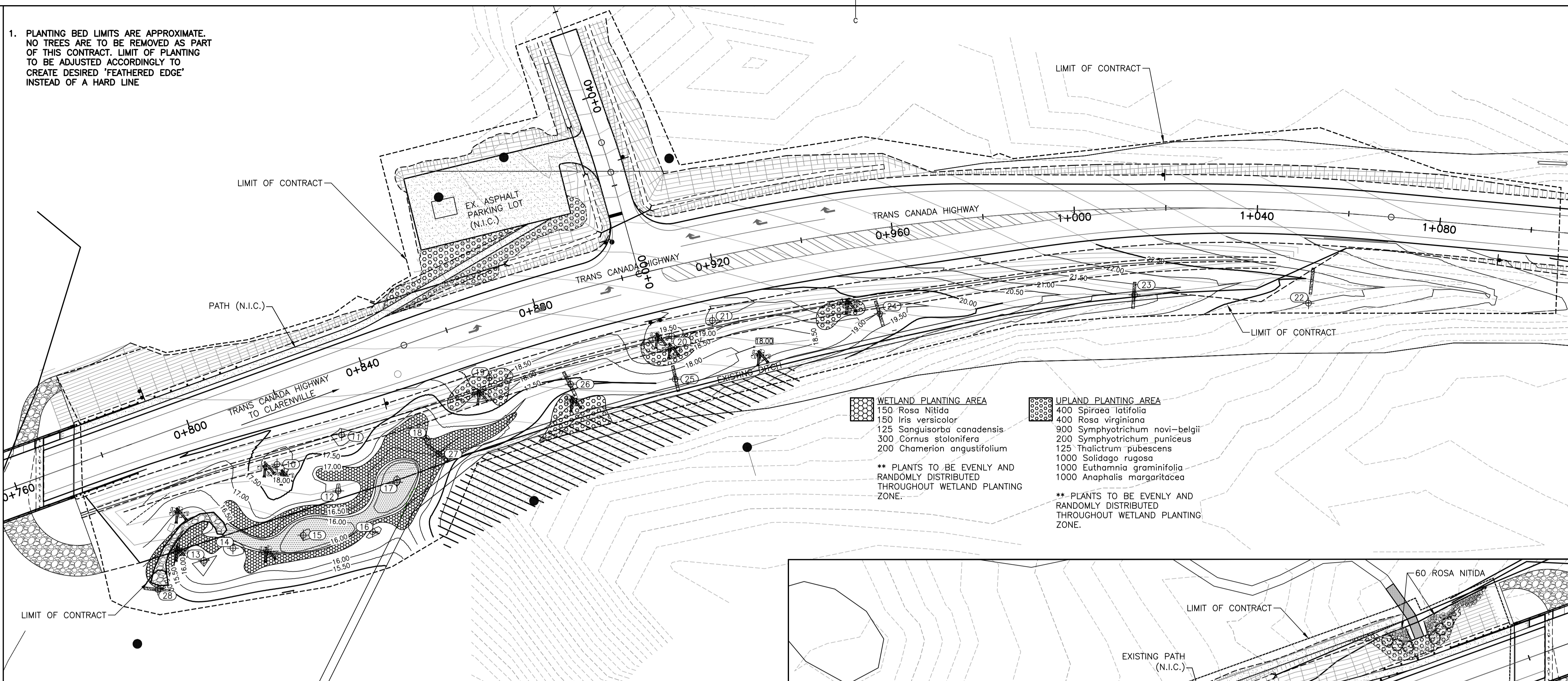
**PLANTING PLAN
 BY CONTRACTOR**

designed	KP/DS	conçu
date	MARCH 2016	
drawn	KP/DS	dessiné
date	MARCH 2017	
approved	RL	approuvé
date	MARCH 2017	
Tender	DARREN FITZGERALD	Soumission
Parks Project Manager	Administrateur de projets Parcs	
project number		no. du projet

drawing no. **L-103** no. du dessin



1. PLANTING BED LIMITS ARE APPROXIMATE. NO TREES ARE TO BE REMOVED AS PART OF THIS CONTRACT. LIMIT OF PLANTING TO BE ADJUSTED ACCORDINGLY TO CREATE DESIRED 'FEATHERED EDGE' INSTEAD OF A HARD LINE



ALL PLANTS ON THIS SHEET PROVIDED AND PLANTED BY MEMORIAL UNIVERSITY

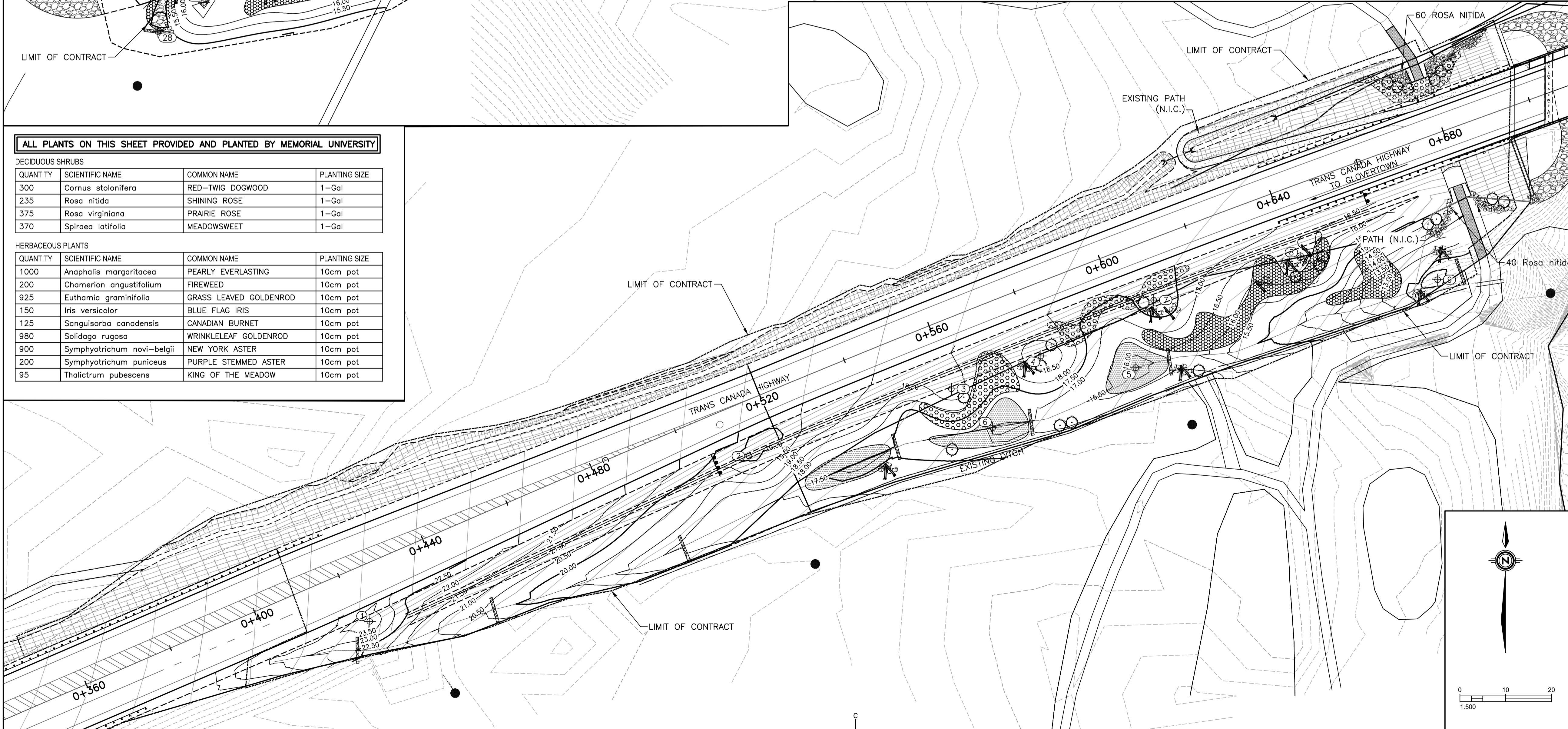
DECIDUOUS SHRUBS			
QUANTITY	SCIENTIFIC NAME	COMMON NAME	PLANTING SIZE
300	<i>Cornus stolonifera</i>	RED-TWIG DOGWOOD	1-Gal
235	<i>Rosa nitida</i>	SHINING ROSE	1-Gal
375	<i>Rosa virginiana</i>	PRAIRIE ROSE	1-Gal
370	<i>Spiraea latifolia</i>	MEADOWSWEET	1-Gal

HERBACEOUS PLANTS			
QUANTITY	SCIENTIFIC NAME	COMMON NAME	PLANTING SIZE
1000	<i>Anaphalis margaritacea</i>	PEARLY EVERLASTING	10cm pot
200	<i>Chamerion angustifolium</i>	FIREWEED	10cm pot
925	<i>Euthamia graminifolia</i>	GRASS LEAVED GOLDENROD	10cm pot
150	<i>Iris versicolor</i>	BLUE FLAG IRIS	10cm pot
125	<i>Sanguisorba canadensis</i>	CANADIAN BURNET	10cm pot
980	<i>Solidago rugosa</i>	WRINKLELEAF GOLDENROD	10cm pot
900	<i>Symphyotrichum novi-belgii</i>	NEW YORK ASTER	10cm pot
200	<i>Symphyotrichum puniceus</i>	PURPLE STEMMED ASTER	10cm pot
95	<i>Thalictrum pubescens</i>	KING OF THE MEADOW	10cm pot

- WETLAND PLANTING AREA**
- 150 *Rosa Nitida*
 - 150 *Iris versicolor*
 - 125 *Sanguisorba canadensis*
 - 300 *Cornus stolonifera*
 - 200 *Chamerion angustifolium*
- ** PLANTS TO BE EVENLY AND RANDOMLY DISTRIBUTED THROUGHOUT WETLAND PLANTING ZONE.
-
- UPLAND PLANTING AREA**
- 400 *Spiraea latifolia*
 - 400 *Rosa virginiana*
 - 900 *Symphyotrichum novi-belgii*
 - 200 *Symphyotrichum puniceus*
 - 125 *Thalictrum pubescens*
 - 1000 *Solidago rugosa*
 - 1000 *Euthamia graminifolia*
 - 1000 *Anaphalis margaritacea*
- ** PLANTS TO BE EVENLY AND RANDOMLY DISTRIBUTED THROUGHOUT WETLAND PLANTING ZONE.

LEGEND
 --- LIMIT OF AREA DISTURBED BY BRIDGE WORKS

NOTE:
 ALL PLANTS ON THIS SHEET WILL BE PROVIDED AND PLANTED BY MUN BOTANICAL GARDENS. CONTRACTOR SHALL COORDINATE WITH MUN TO MAKE THE SITE AVAILABLE TO MUN STUDENTS. NO TRAFFIC CONTROL OR MACHINERY SHALL BE PROVIDED TO MUN AS PART OF THIS CONTRACT.



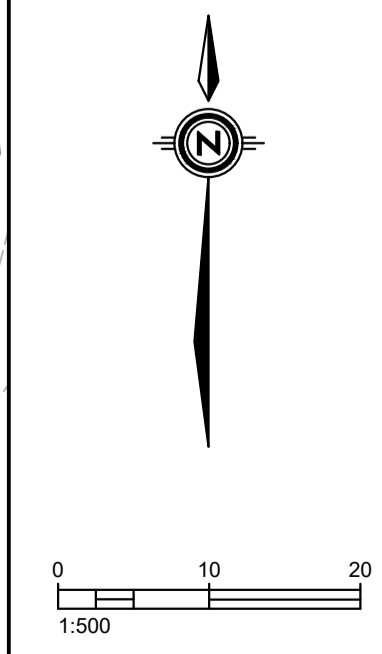
revisions	date
5	RE-ISSUED FOR TENDER 6-20 2017
4	RE-ISSUED FOR TENDER 4-25 2017
3	RE-ISSUED FOR TENDER 3-21 2017
2	ISSUED FOR TENDER 2-2 2017
1	PRE-TENDER REVIEW 12-13 2016

**TERRA NOVA NATIONAL PARK
 NORTHWEST RIVER
 BRIDGE REHABILITATION**

**PLANTING PLAN BY
 MUN BOTANICAL GARDEN
 (NOT IN CONTRACT
 FOR REFERENCE ONLY)**

designed	KP/DS	conçu
date	MARCH 2016	
drawn	KP/DS	dessiné
date	MARCH 2017	
approved	RL	approuvé
date	MARCH 2017	
Tender	DARREN FITZGERALD	Soumission
Parks Project Manager	Administrateur de projets Parcs	
project number		no. du projet

drawing no. **L-104** no. du dessin



PLANTING NOTES

GENERAL PLANTING

-CONTRACTOR TO VERIFY ALL QUANTITIES AND REPORT ANY DISCREPANCIES TO THE LANDSCAPE ARCHITECT IN WRITING.

DELIVERY AND INSPECTION

- KEEP ALL ROOTS AND ROOTBALLS MOIST PRIOR TO PLANTING.
- OBTAIN OWNER / OWNER'S REP'S APPROVAL ON ALL PLANT MATERIAL AT SOURCE OR UPON DELIVERY, PRIOR TO COMMENCEMENT OF PLANTING WORK. ALL PLANT MATERIAL TO BE SOURCED FROM NFLD SEED STOCK.
- APPROVAL OF PLANT MATERIAL PRIOR TO PLANTING SHALL NOT IMPAIR THE RIGHT OF THE DEPARTMENT REPRESENTATIVE TO REJECT PLANTS AFTER PLANTING, WHICH HAVE BEEN DAMAGED OR WHICH IN ANY WAY DO NOT CONFORM TO THE SPECIFICATIONS.
- SUBSTITUTIONS OF SIZE, OR WITH OTHER PLANT MATERIAL WILL ONLY BE ALLOWED WITH THE WRITTEN APPROVAL OF THE OWNER / OWNER'S REP.
- ALL MATERIAL MUST CONFORM TO THE SIZES SHOWN ON THE PLANT LIST, EXCEPT WHERE LARGER PLANT MATERIAL IS USED WHEN APPROVED BY THE DEPARTMENT REPRESENTATIVE. USE OF LARGER PLANTS WILL NOT INCREASE THE CONTRACT PRICE. PLANT MATERIAL PROVIDED BY MUN BOTANICAL GARDEN MAY DEViate FROM SIZES SPECIFIED ON ACCEPTANCE OF THE OWNER/OWNER'S REPRESENTATIVE.
- ALL SHRUBS AND TREES SHALL CONFORM TO THE PRESENT STANDARDS OF THE CANADIAN NURSERY TRADES ASSOCIATION FOR SIZE AND SPECIES.
- TREES SHALL BE WELL BRANCHED AND BALANCED WITH A STRONG CENTRAL LEADER.

PREPARATION AND INSTALLATION

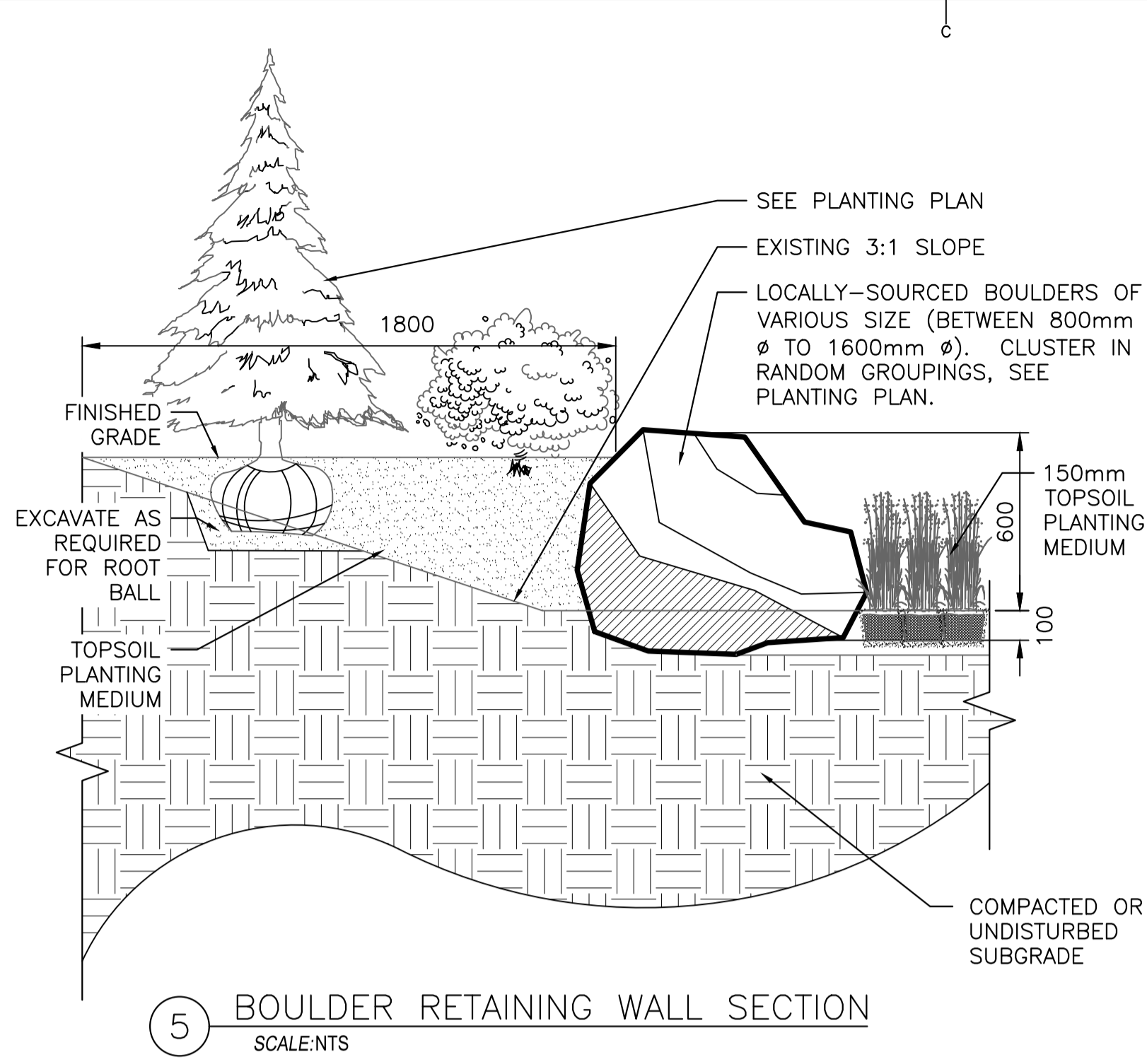
- PREPARE PLANTING BEDS PRIOR TO ARRIVAL OF PLANT MATERIAL ON SITE.
- ALL BEDS TO BE PREPARED USING STOCKPILED 'DUFF' MATERIAL CONTAINING ROOTS AND FIBROUS MATERIALS. MATERIAL IS NOT TO BE SCREENED PRIOR TO SPREADING.
- EXCAVATE PER PLANTING DETAILS.
- ALL PLANTING TO BE COMPLETED AFTER AUGUST 20, 2017 AND BEFORE SEPTEMBER 30, 2017
- PLANTING WORK SHOWN ON MUN PLANTING SHEET WILL BE COMPLETED AFTER THE CONTRACTOR COMPLETES THEIR GRADING WORKS. CONTRACTOR WILL COORDINATE ACCESS TO THE SITE AND TIMELINES WITH STAFF AT MEMORIAL BOTANICAL GARDENS

GUARANTEE AND FINAL INSPECTION

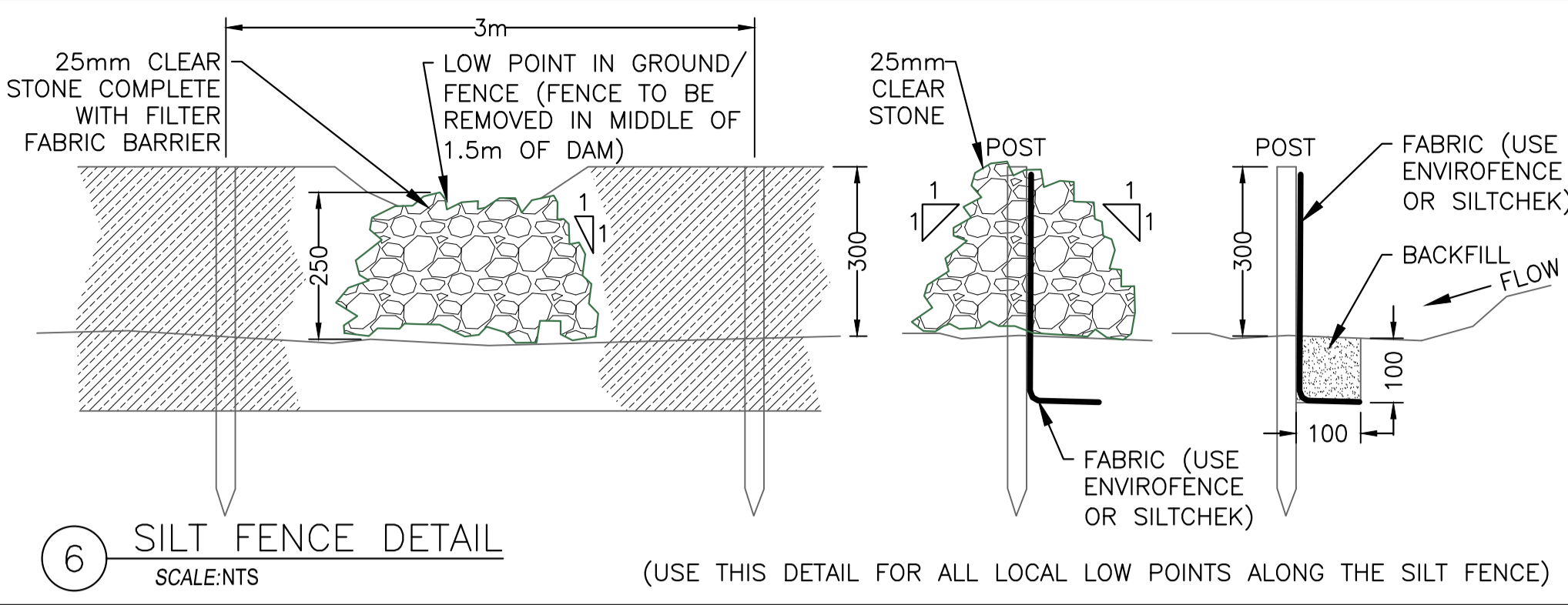
- AT THE COMPLETION OF PLANTING OPERATIONS REMOVE ALL SURPLUS MATERIAL FROM THE SITE AT NO EXTRA COST.
- MAKE GOOD ALL DAMAGE RESULTING FROM THE PLANTING OPERATIONS AT NO EXTRA COST.
- PLANT MATERIAL SHALL BE GUARANTEED FOR A MINIMUM OF ONE YEAR FROM THE ISSUE DATE OF THE CERTIFICATE OF COMPLETION.
- CONTRACTOR TO CONTACT DEPARTMENT REPRESENTATIVE TO REVIEW PROJECT FOR GUARANTEE INSPECTIONS.

UTILITIES

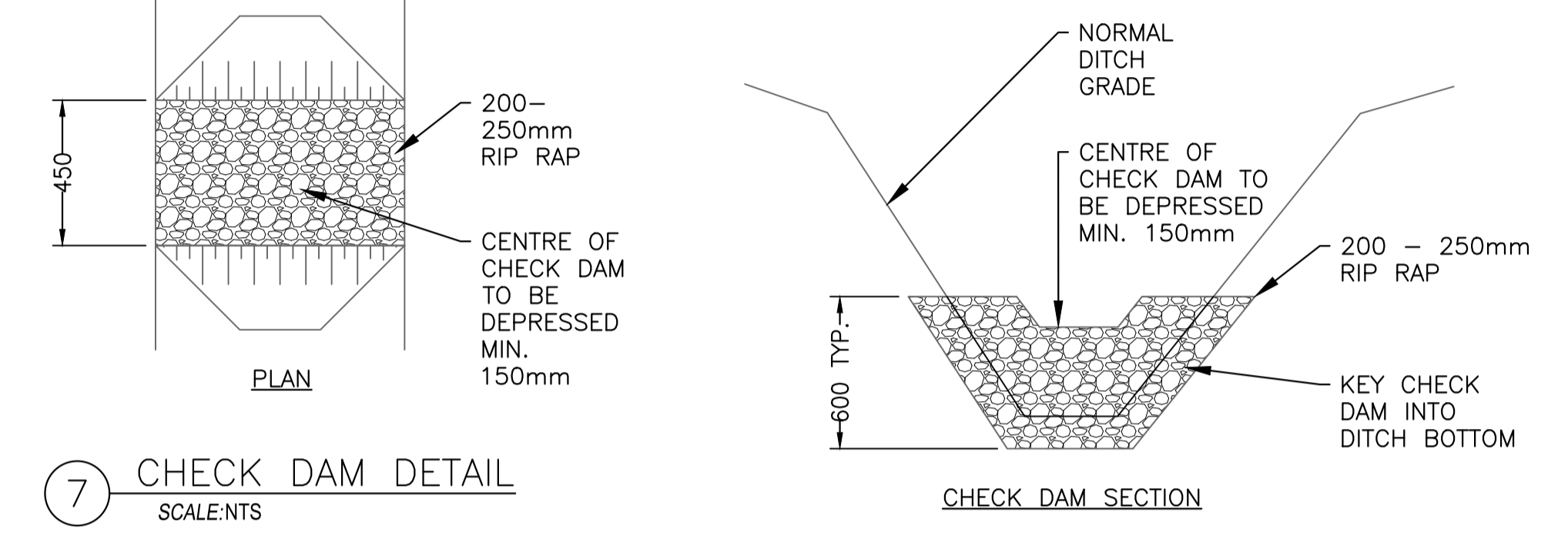
- CONTRACTOR IS RESPONSIBLE FOR LOCATING ALL EXISTING UTILITIES ON THE SITE.
- CONTRACTOR MUST CHECK AND VERIFY ALL DIMENSION AND CONDITIONS ON THE JOB, REPORTING ALL DISCREPANCIES TO THE LANDSCAPE ARCHITECT BEFORE PROCEEDING WITH THE WORK.
- CONTRACTOR IS RESPONSIBLE FOR ANY DAMAGE CAUSED TO EXISTING SERVICES WHEN EXCAVATING.



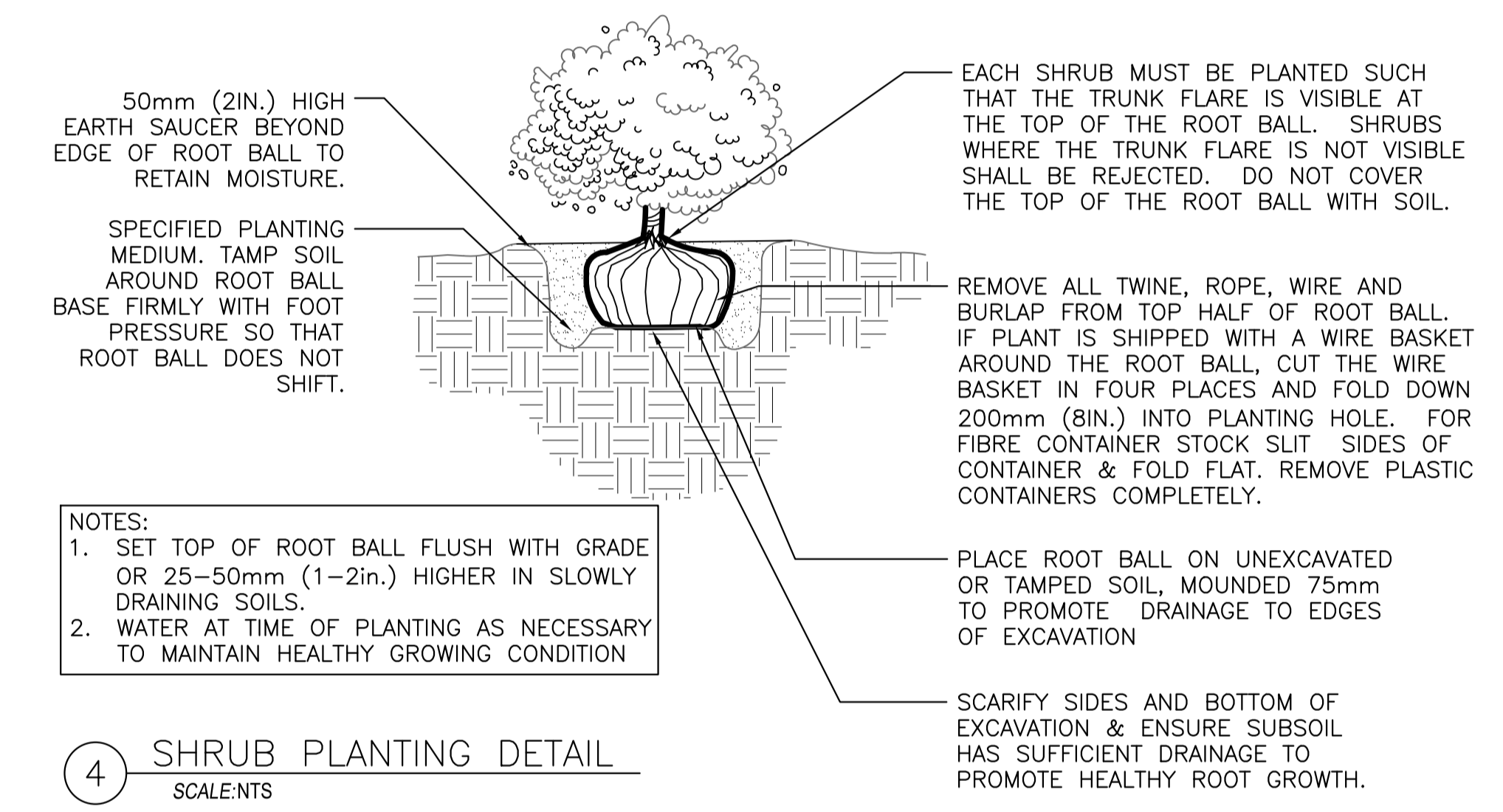
5 BOULDER RETAINING WALL SECTION
SCALE:NTS



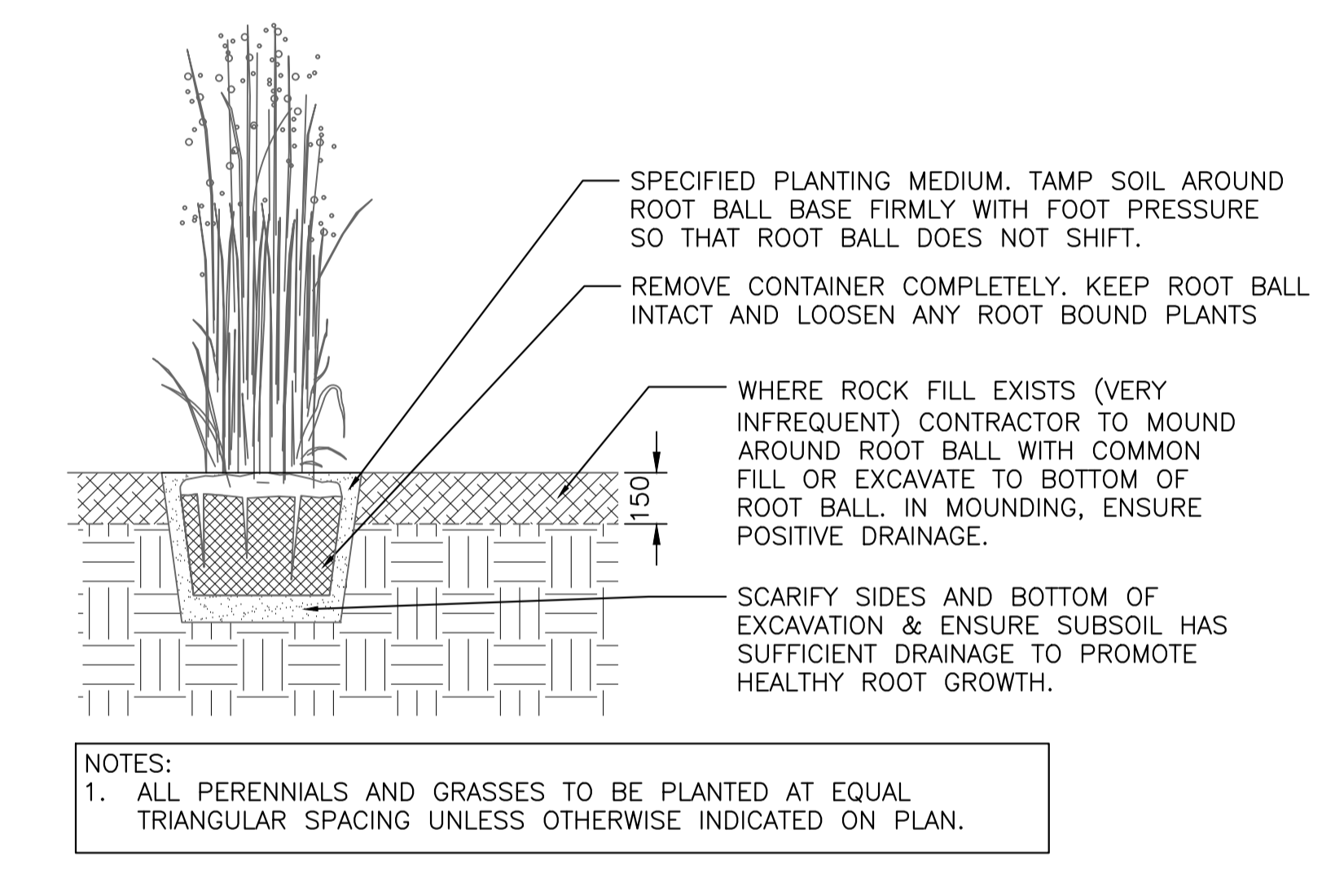
6 SILT FENCE DETAIL
SCALE:NTS (USE THIS DETAIL FOR ALL LOCAL LOW POINTS ALONG THE SILT FENCE)



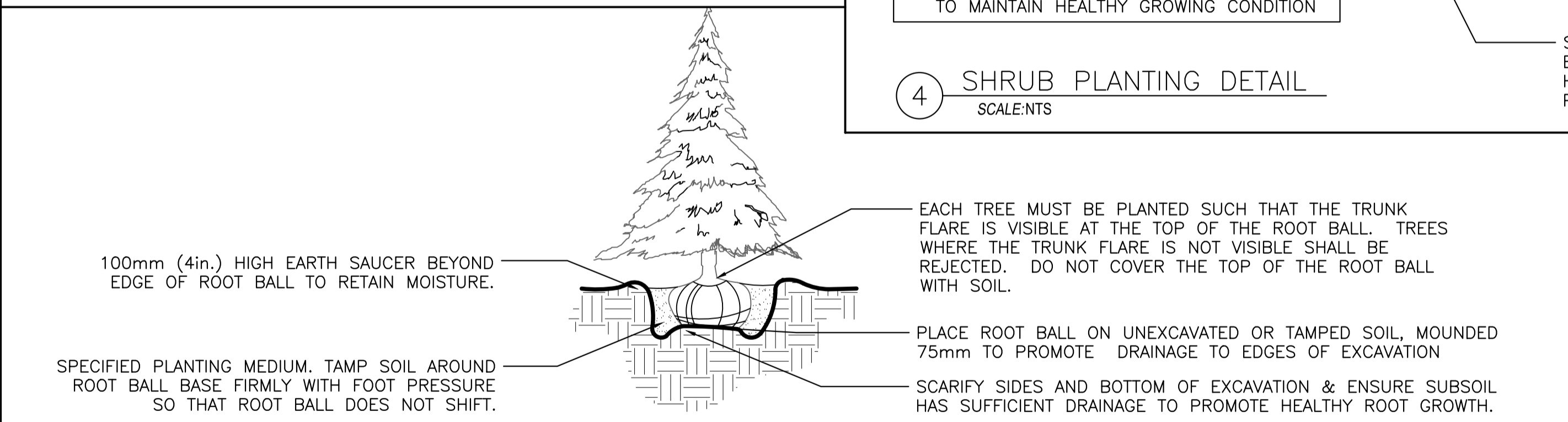
7 CHECK DAM DETAIL
SCALE:NTS



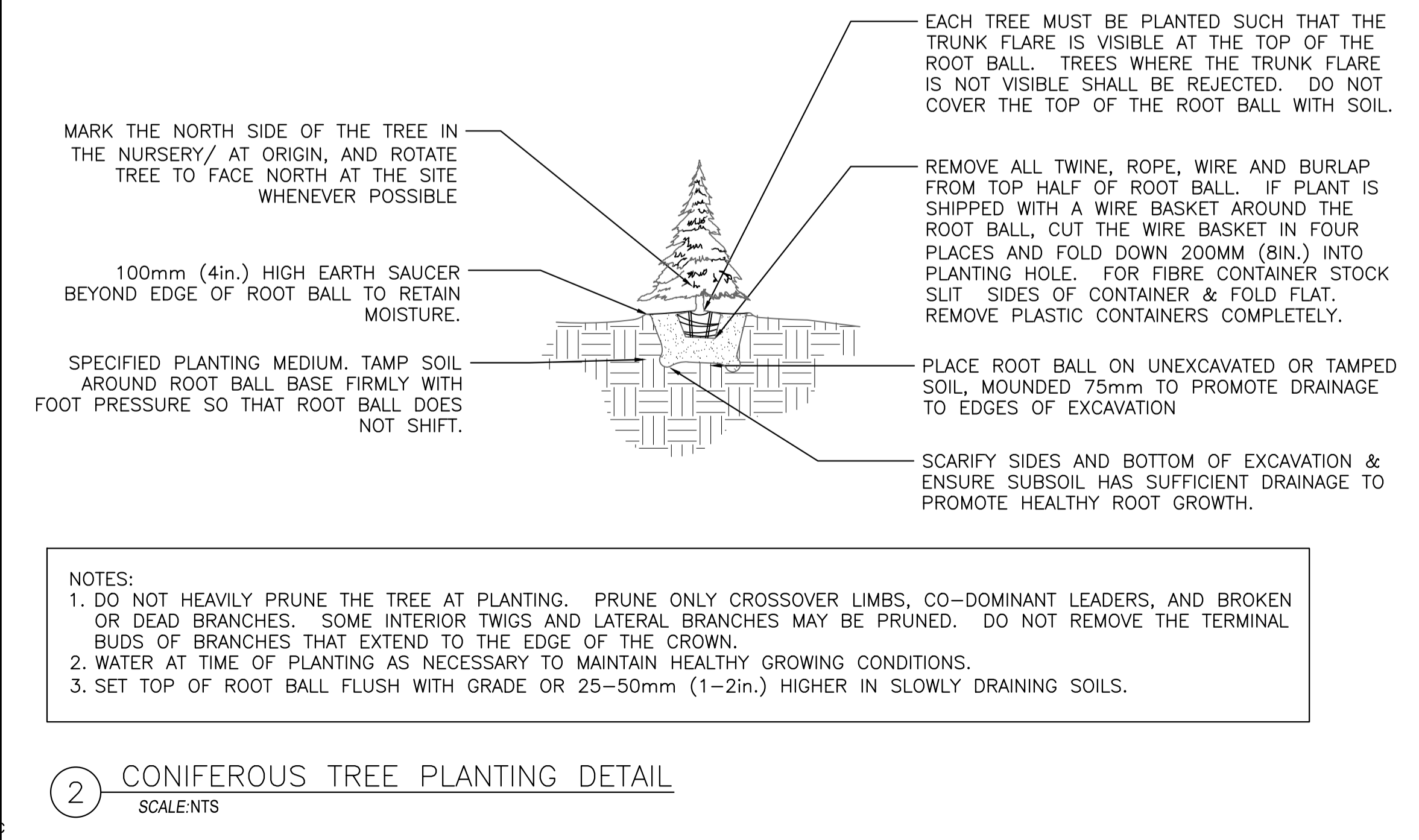
4 SHRUB PLANTING DETAIL
SCALE:NTS



1 PERENNIAL PLANTING DETAIL
SCALE:NTS



3 CONIFEROUS TREE TRANSPLANTING DETAIL - 100cm
SCALE:NTS



2 CONIFEROUS TREE PLANTING DETAIL
SCALE:NTS

- TREE TRANSPLANT NOTES:
1. SELECT TREES (LESS THAN 1M IN HEIGHT) WILL BE FLAGGED BY PARKS CANADA STAFF TO BE RELOCATED WITHIN 15 MINUTES DRIVE OF THE NORTHWEST RIVER BRIDGE SITE. THE PLANTING PLAN SHOWS 60 TREES FOR TRANSPLANTING.
 2. TRANSPLANTING SHALL BE DONE IN APRIL OR MAY OF 2017.
 3. CONTRACTOR SHALL REMOVE A ROOT BALL NO LESS THAN 500mm IN WIDTH AND 300MM DEEP TAKING CARE NOT TO DAMAGE THE TREE LEADER OR BRANCHES.
 4. WITH THE FRONT OF THE SPADE FACING THE PLANT(S), SEVER ALL SIDE ROOTS BY CUTTING STRAIGHT DOWN AROUND THE ENTIRE CIRCLE. THEN UNDERCUT AT AN ANGLE TO SEVER ALL ROOTS UNDER THE ROOT BALL.
 5. NEVER REMOVE A PLANT FROM THE HOLE BY PULLING IT OUT BY THE TOP.
 6. ROOT BALL SHOULD BE WRAPPED WITH BURLAP OR PLACED IN POTS FOR TRANSPORTATION TO THE SITE FOLLOWING CANADIAN NURSERY STANDARDS.
 7. TREES SHALL ONLY BE REMOVED WHEN THEY CAN BE TRANSPLANTED WITHIN 5 DAYS OF THEIR REMOVAL.
 8. ENSURE THAT PLANT MATERIALS ARE SECURED TO THE VEHICLE, AND NOT PRONE TO DAMAGE DURING TRANSPORT.
 9. IF PLANTS ARE TRANSPORTED IN LEAF IN AN OPEN VEHICLE, WRAP OR COVER THEM WITH A TARP OR COTTON (NOT PLASTIC) SHEET TO PREVENT SUN AND/OR WIND BURN
 10. EXCAVATED AREA WHERE TREE WAS REMOVED SHALL BE SMOOTHED OUT USING ADJACENT FOREST FLOOR DEBRIS TO MINIMIZE IMPACT OF THE EXCAVATION SITE.
 11. DO NOT TRANSPLANT TREES THAT ARE SHOWING SIGNS OF STRESS OR HAVE DIED IN TRANSPORT OR DURING STORAGE (<5 DAYS).
 12. IF TREES ARE STORED ON THE SITE BEFORE TRANSPLANTING, HEEL THE TREES INTO THE GROUND TO KEEP THE ROOTS COVERED WITH SOIL, KEEP THEM IN A SHADED LOCATION AND KEEP THE ROOT BALL MOIST AT ALL TIMES.
 13. REMOVE BURLAP OR POT BEFORE REPLANTING.
 14. DIG A HOLE LARGE ENOUGH TO ACCOMMODATE THE ENTIRE ROOT SYSTEM. PLACE THE ROOT BALL INTO THE HOLE WITH MINIMAL DISTURBANCE.
 15. IF HUMUS OR LEAF LITTER HAS BEEN SALVAGED, SPREAD IT OVER THE EXPOSED SOIL. IF THIS IS NOT AVAILABLE, APPLY WEED-FREE COMMERCIAL MANURE OR OTHER SOURCES OF ORGANIC MATTER SUCH AS MULCH OR WELL-ROTTED COMPOST. PARKS CANADA WILL IDENTIFY A LEAF LITTER AND HUMUS SITE FOR TRANSPLANTING.
 16. GENTLY, BUT FIRMLY, COMPACT THE SOIL AROUND THE PLANTS WITH THE BALL OF YOUR FOOT. ON SLOPED OR WELL-DRAINED SITES, USE SOIL TO FORM A SMALL DISH AROUND THE BASE OF THE PLANT TO ENCOURAGE WATER INFILTRATION.
 17. WATER THE SITE WELL, PARTICULARLY AROUND THE BASE OF THE PLANTS, TO SATURATE THE ROOT ZONE.

5	RE-ISSUED FOR TENDER	6-20 2017
4	RE-ISSUED FOR TENDER	4-25 2017
3	RE-ISSUED FOR TENDER	3-21 2017
2	ISSUED FOR TENDER	2-2 2017
1	PRE-TENDER REVIEW	12-13 2016
revisions		date

project

TERRA NOVA NATIONAL PARK NORTHWEST RIVER BRIDGE REHABILITATION

drawing

LANDSCAPE DETAILS

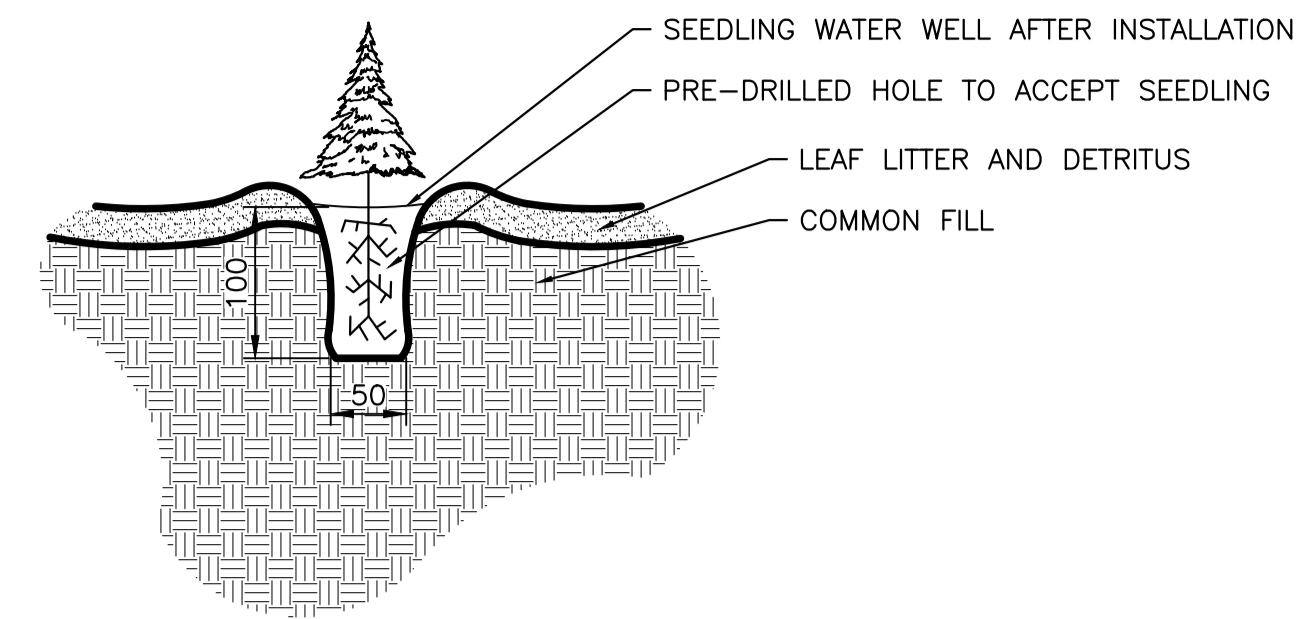
designed KP/DS
date MARCH 2016
drawn KP/DS/DH
date MARCH 2017
approved RL
date MARCH 2017

Tender DARREN FITZGERALD
Parks Project Manager Administrateur de projets Parcs

project number no. du projet

drawing no. no. du dessin

L-105



PLUGGED SEEDLING PLANTING

1. KEEP SEEDLING TRAYS MOIST AND SHADED UNTIL PLANTING
2. USING A CORDLESS DRILL WITH A BIT MATCHED TO THE SEEDLINGS WIDTH, DRILL A HOLE INTO THE SOIL WHERE THE SEEDLING WILL BE LOCATED.
3. PLACE THE SEEDLING IN THE HOLE TO A DEPTH EQUAL TO THE THE SOIL-TRUNK INTERFACE (I.E. LEVEL WITH THE GROUND ELEVATION).
4. TAMP THE SEEDLING IN BY HAND TO ENSURE IT IS TIGHT AND SNUG
5. HAND WATER EACH SEEDLING IMMEDIATELY AFTER PLANTING TO COMPLETELY SATURATE THE SOIL AROUND THE SEEDLING
6. SPREAD HUMUS OR LEAF LITTER AROUND THE BASE OF THE PLANT TO RETAIN SOIL MOISTURE
7. PLACE BLACK SPRUCE AND TAMARACK IN LOW-LYING WETTER AREAS AND WHITE SPRUCE, AND WHITE PINE IN DRIER LOCATIONS.

1 PLUGGED SEEDLING PLANTING DETAIL
SCALE: NTS

5	RE-ISSUED FOR TENDER	6-20 2017
4	RE-ISSUED FOR TENDER	4-25 2017
3	RE-ISSUED FOR TENDER	3-21 2017
2	ISSUED FOR TENDER	2-2 2017
1	PRE-TENDER REVIEW	12-13 2016
revisions		date

project projet

**TERRA NOVA
NATIONAL PARK
NORTHWEST RIVER
BRIDGE REHABILITATION**

drawing dessin

LANDSCAPE DETAILS 2

designed KP/DS conçu

date MARCH 2016

drawn KP/DS/DH dessiné

date MARCH 2017

approved RL approuvé

date MARCH 2017

Tender Darren Fitzgerald Soumission

Parcs Project Manager Administrateur de projets Parcs

project number no. du projet

drawing no. no. du dessin

L-106