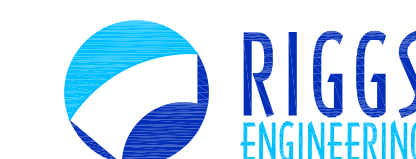
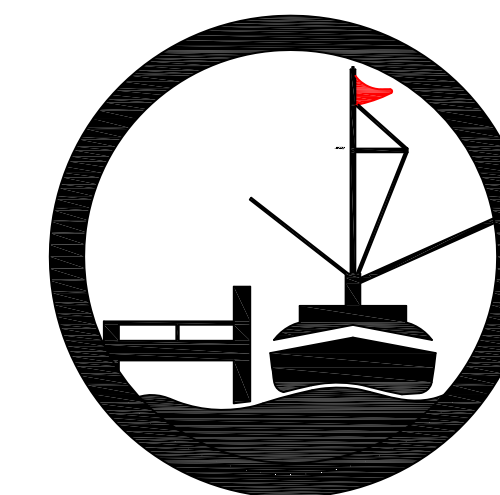





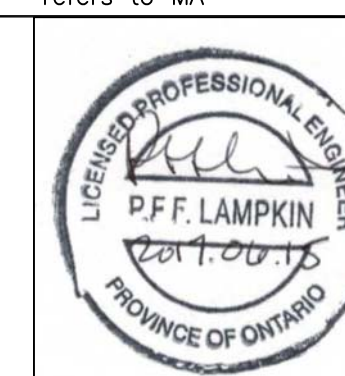
SMALL CRAFT HARBOURS
CENTRAL AND ARCTIC REGION



 **Riggs Engineering Ltd.**
1240 Commissioners Rd. W, Suite 205
London, Ontario,
N6K 1C7
Tel: (519) 657-1040
Fax: (519) 657 8631
Website: www.riggsgengineering.com

- | | | |
|---|---|--|
|  | 1 | Detail No. |
| | 2 | drawing no. — where detail required
refers to MA— |
| | 3 | drawing no. — where detailed
refers to MA— |

Stamp:



NOTES

REVISIONS:		DATE:
1	ISSUED FOR TENDER	JUNE/23/2017

SCALE:	CLASS:
AS NOTED	

PROJECT:

2017 EAST HARBOUR WALL
REPAIRS

DESCRIPTION:

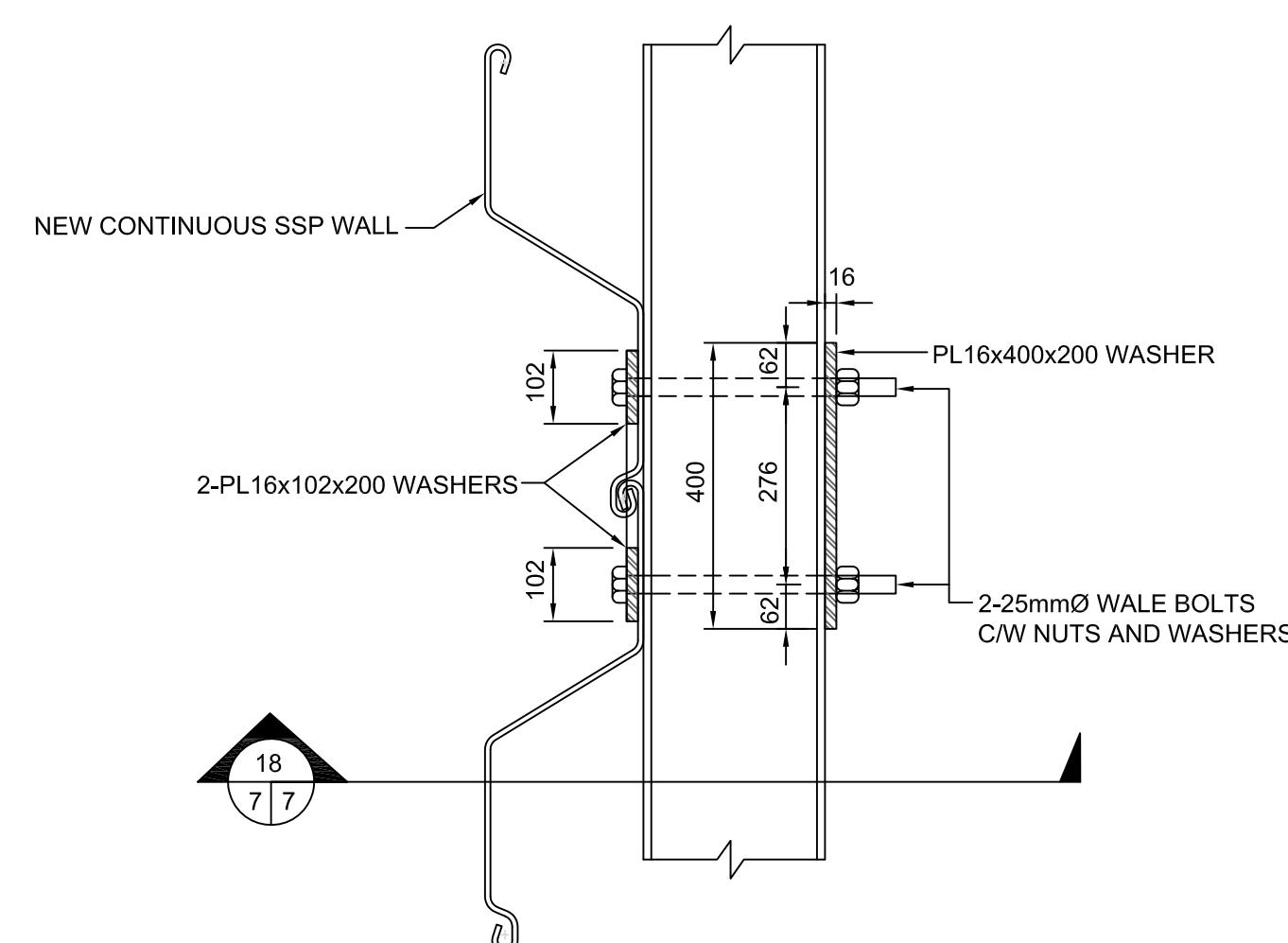
TYP. STEEL DETAILS

DRAWN: AV	APPROVED: PL
DATE: 2017-03-31	DATE: 2017-03-31

LOCATION:

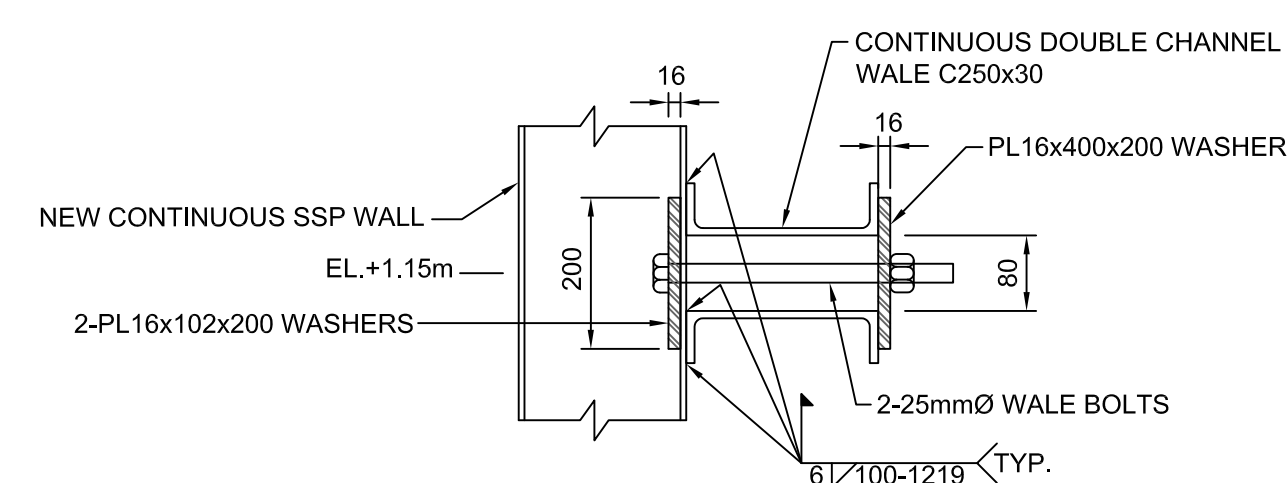
WHEATLEY, ONTARIO

DRAWING NO.:	LOCATOR CODE:
MA-07	F2930-160026



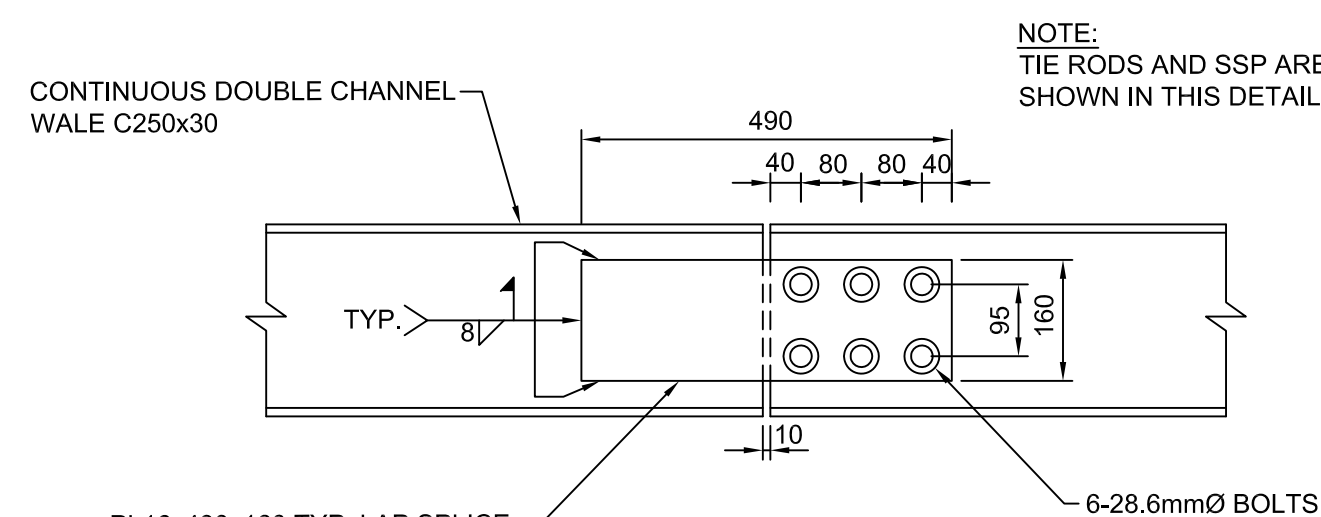
14
6 7

TYP. WALE BOLT DETAIL
SCALE: 1:10



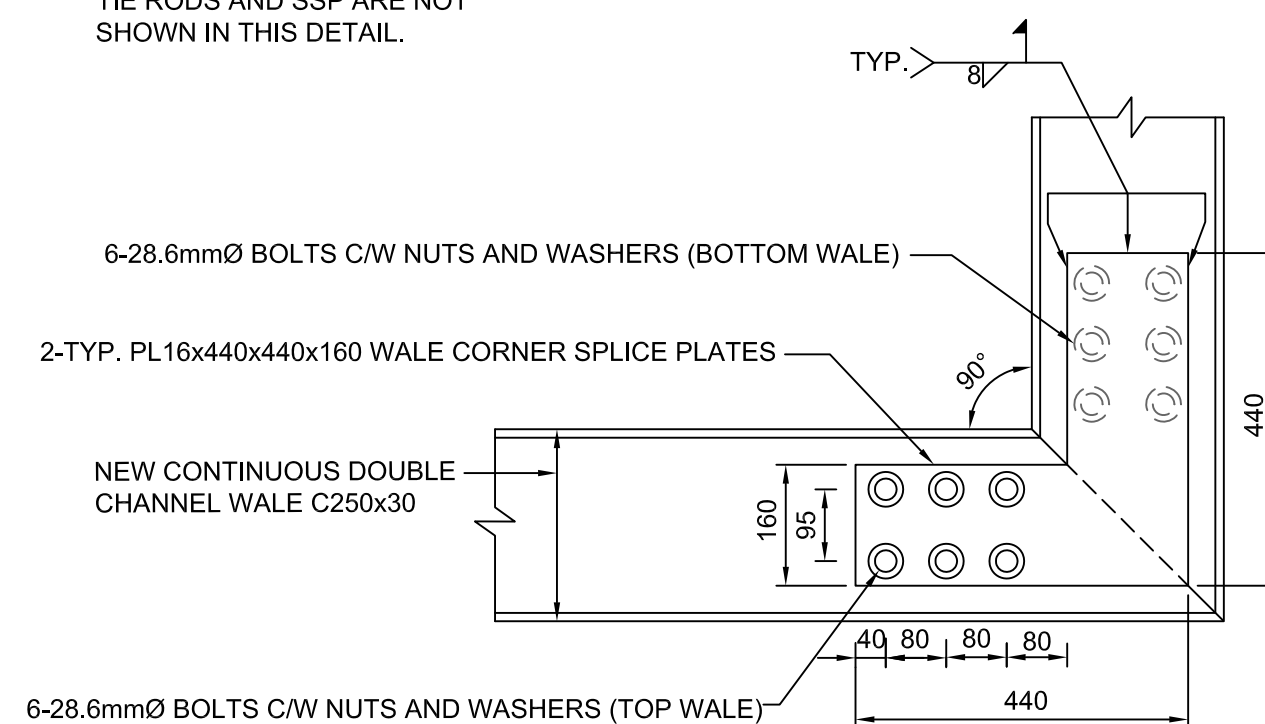
18
7 7

TYP. WALE BOLT DETAIL
SCALE: 1:10



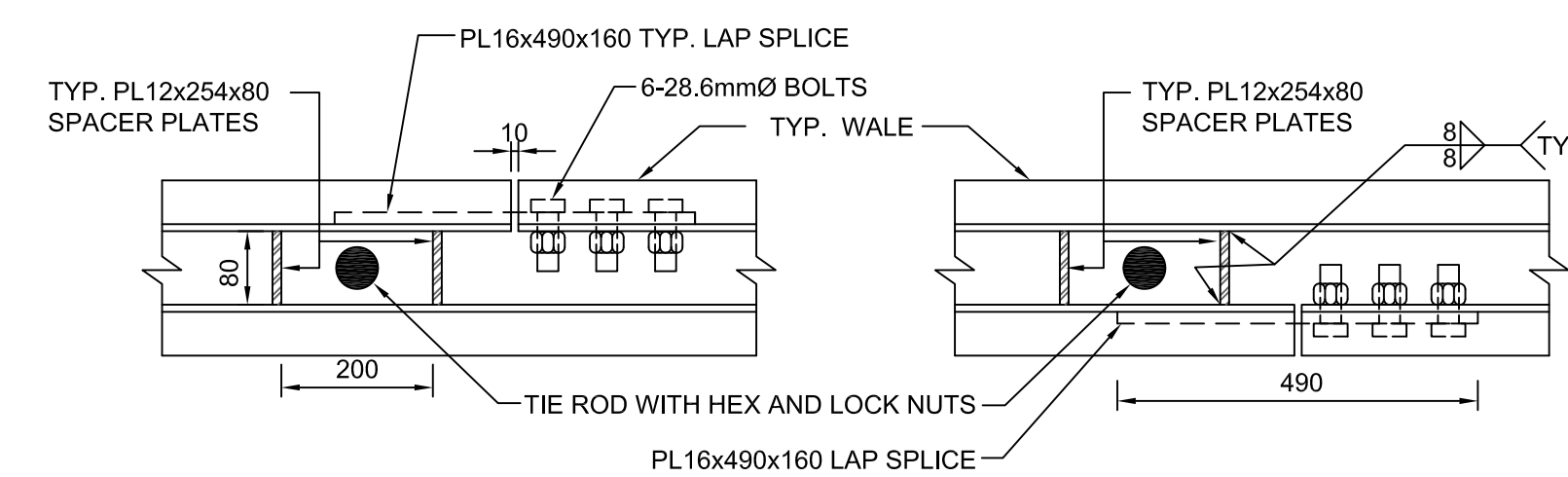
15
6 7 TYP. WALE SPLICE DETAIL
SCALE: 1:10

NOTE:
TIE RODS AND SSP ARE NOT
SHOWN IN THIS DETAIL.



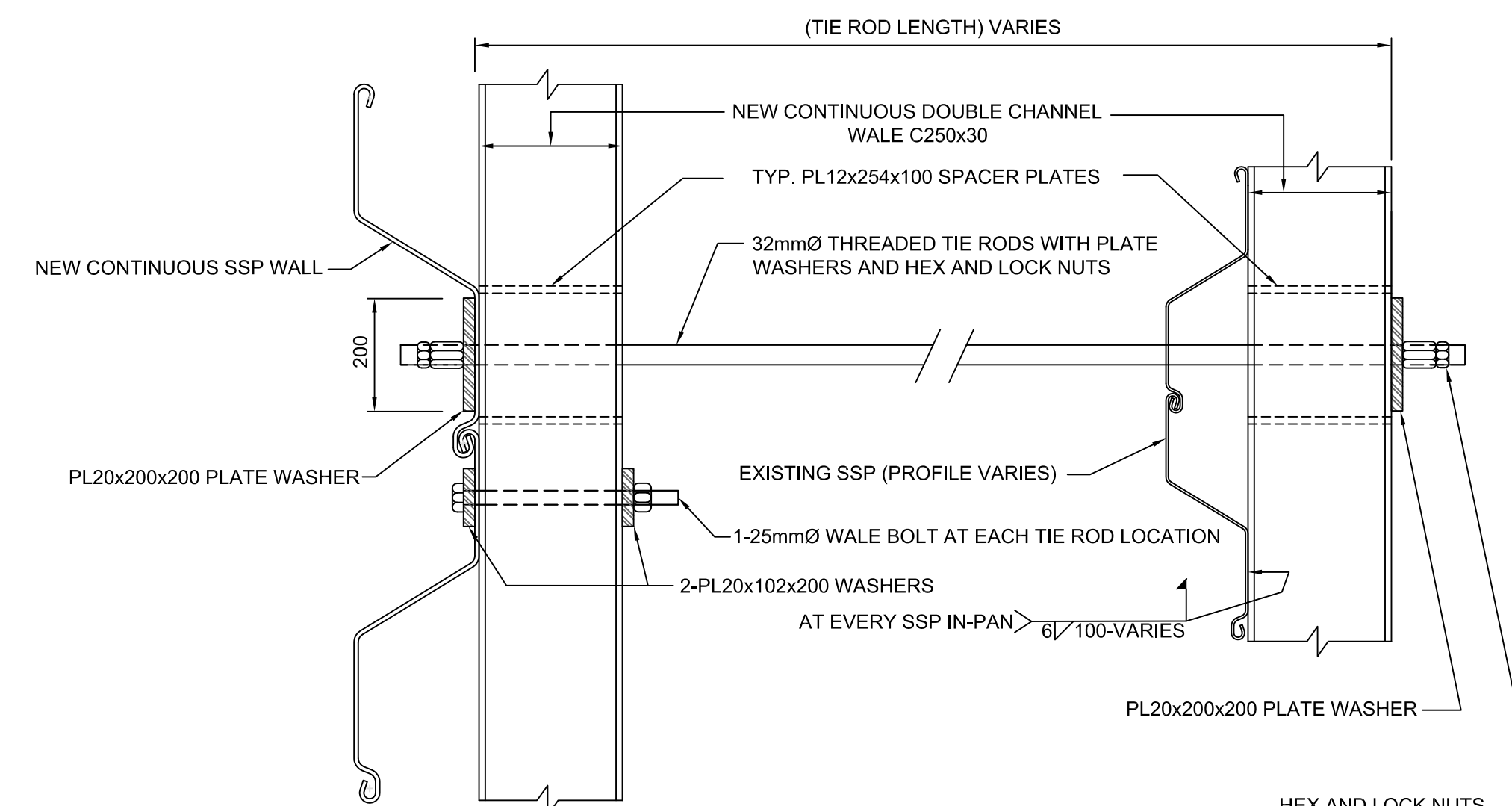
16
6 7

TYP. CORNER WALE SPLICE DETAIL
SCALE: 1:10



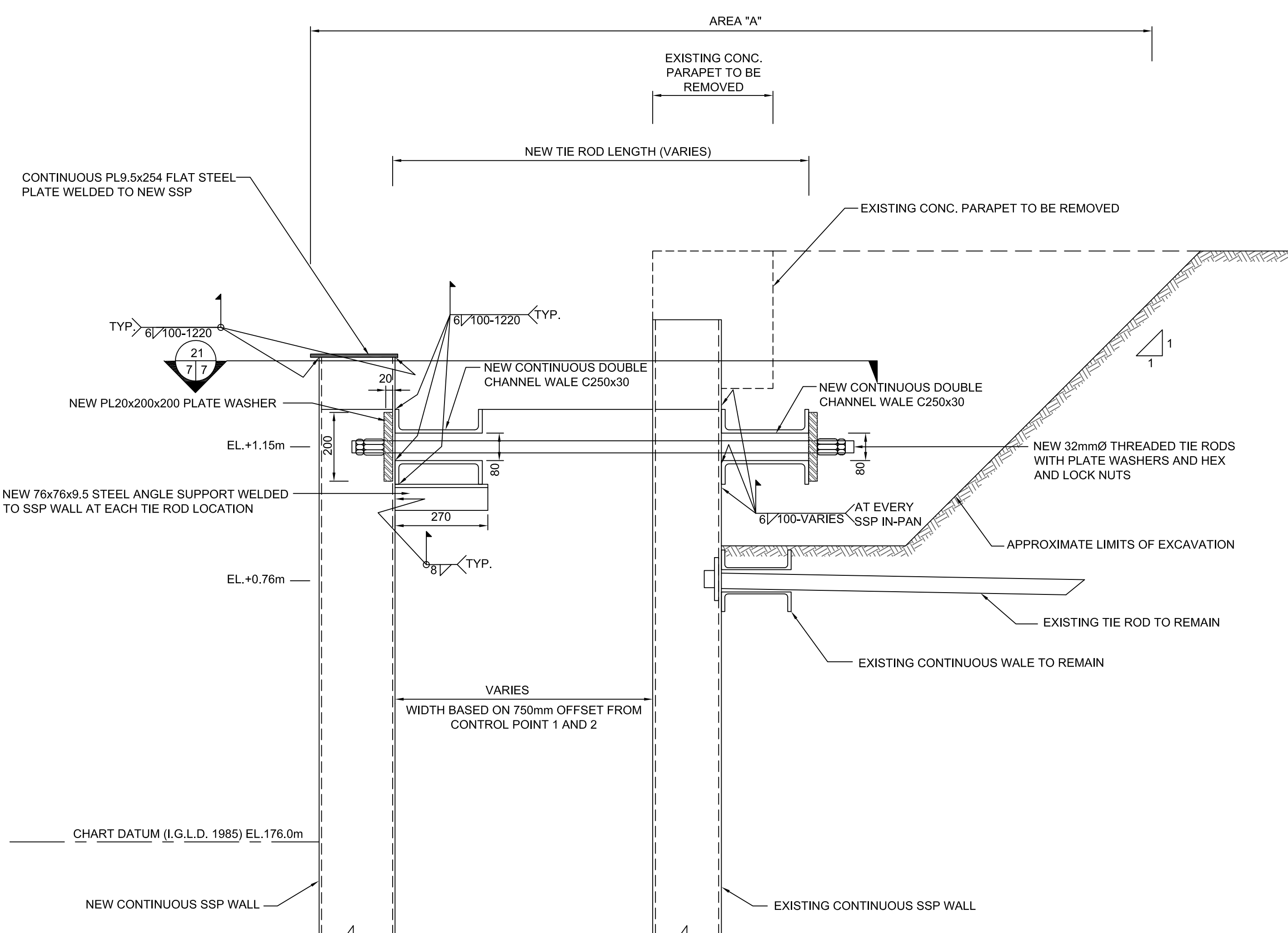
17
7 7

TYP. WALE SPLICE DETAIL
SCALE: 1:10

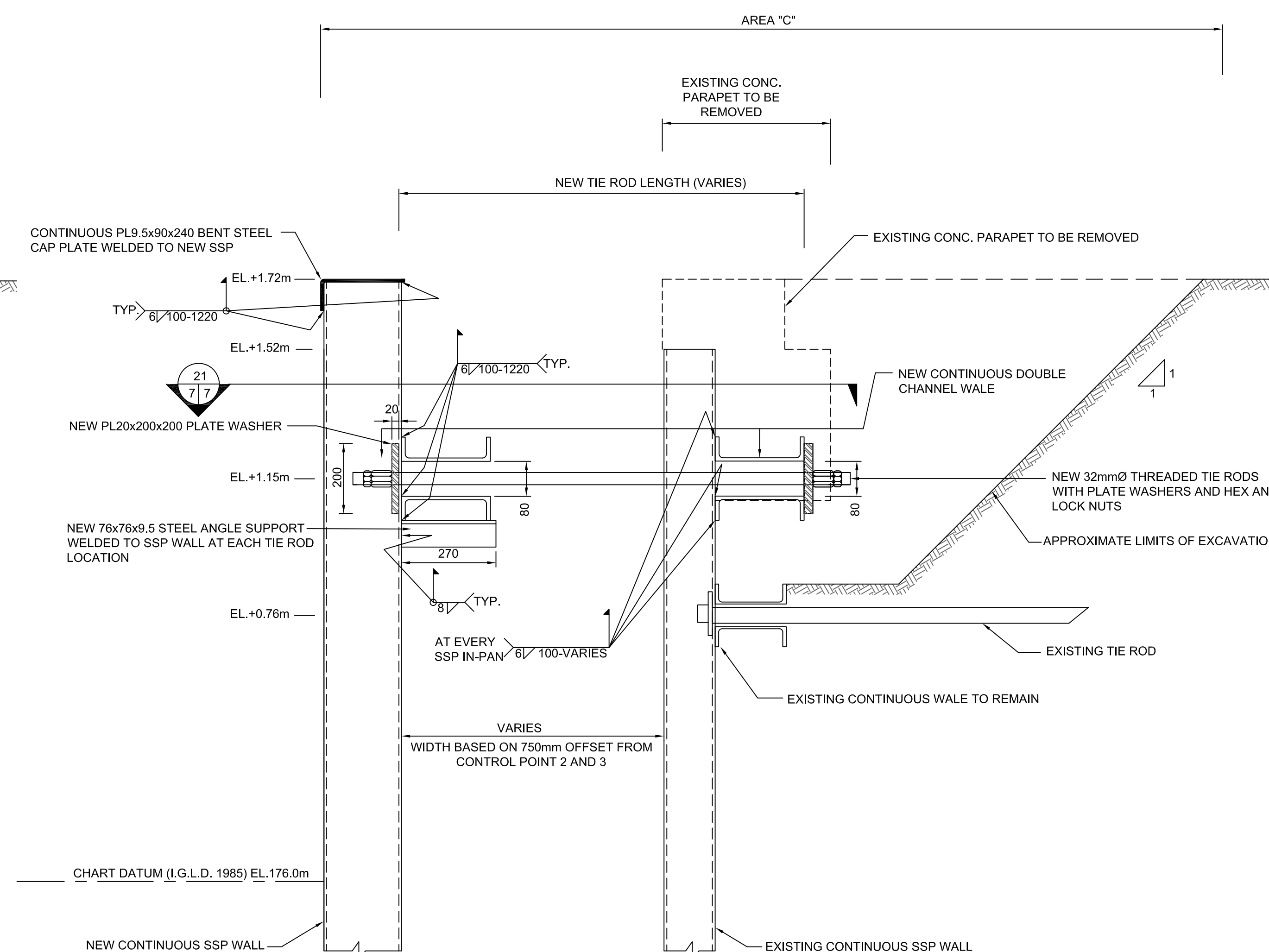


21
7 7

TYP. TIE ROD TO SSP WALL DETAIL
SCALE: 1:10



19 TIE ROD TO SSP WALL DETAIL (0+000EP TO 0+144.45EP)
6 7
SCALE: 1:10



20 TIE ROD TO SSP WALL DETAIL (0+144.4EP TO 384.80EP)
6 7
SCALE: 1:10