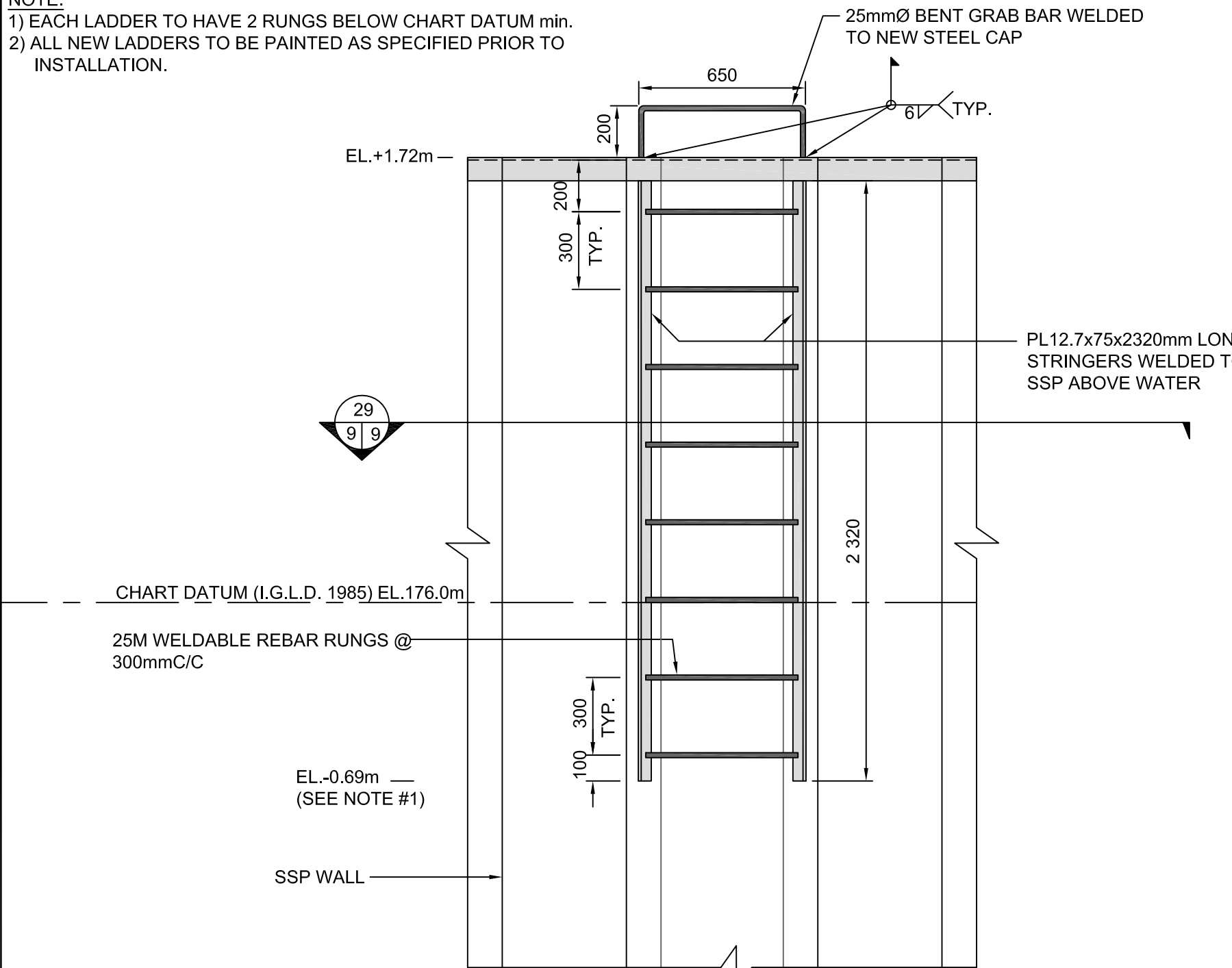
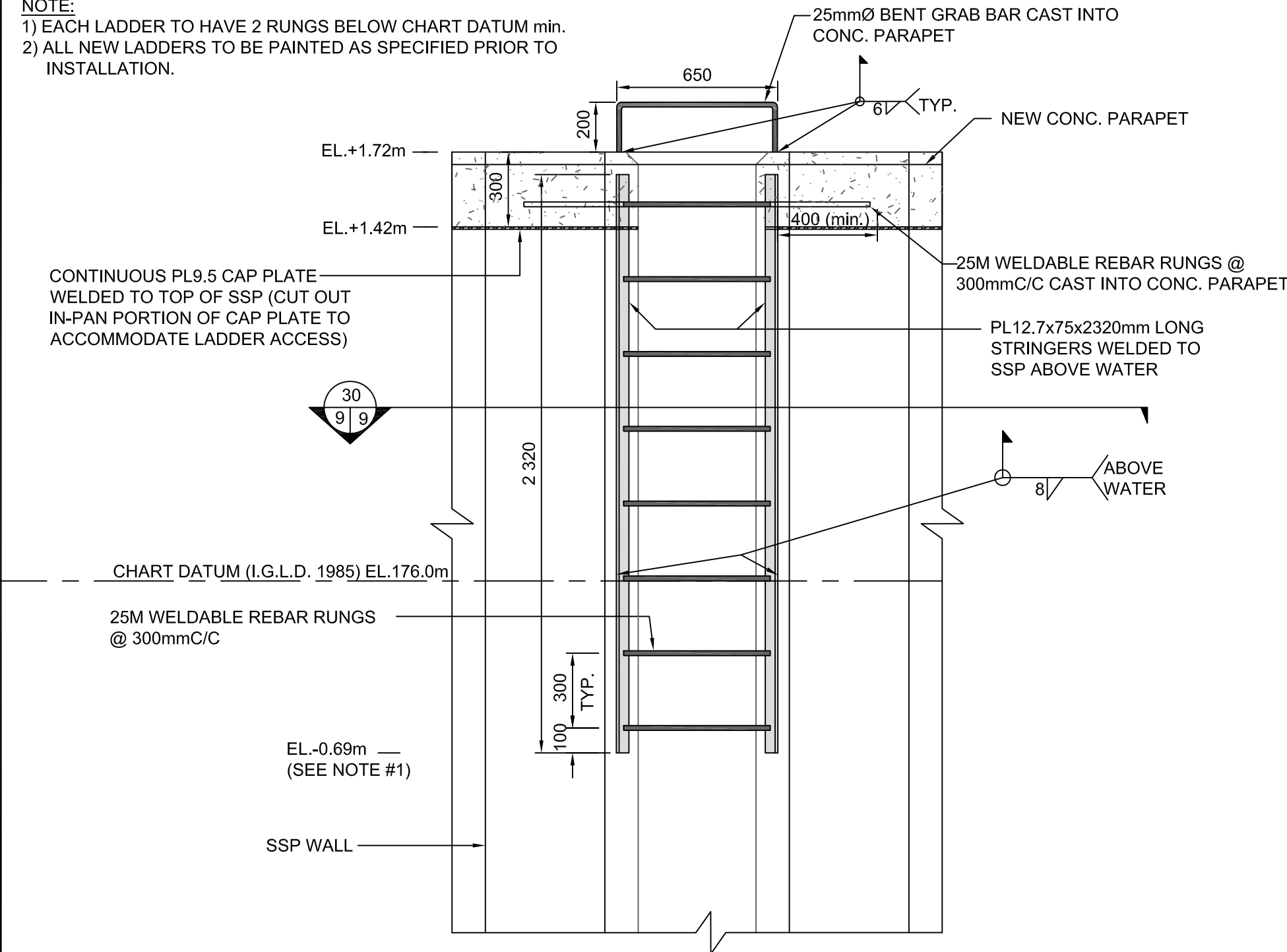


NOTE:
1) EACH LADDER TO HAVE 2 RUNGS BELOW CHART DATUM min.
2) ALL NEW LADDERS TO BE PAINTED AS SPECIFIED PRIOR TO INSTALLATION.

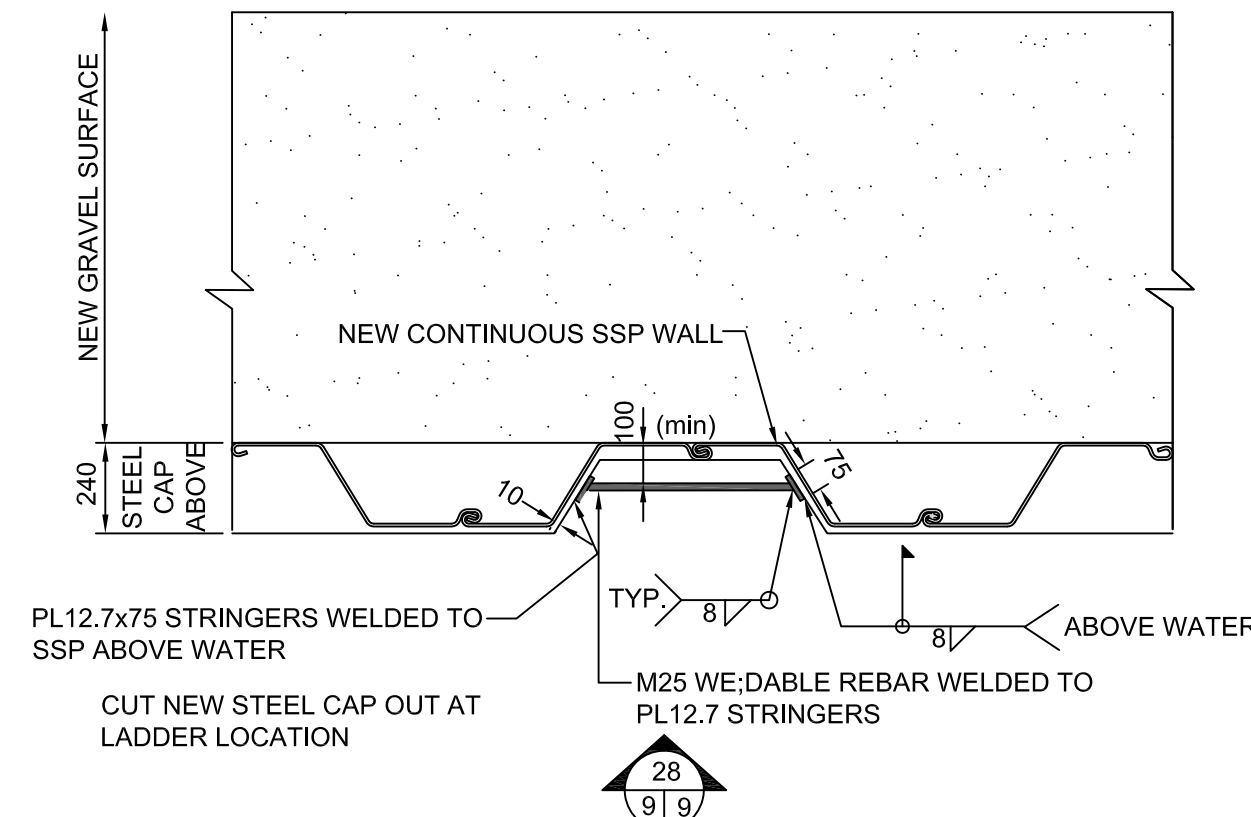


28
9 | 9
TYP. LADDER (TYPE 1) ELEVATION
SCALE: 1:20

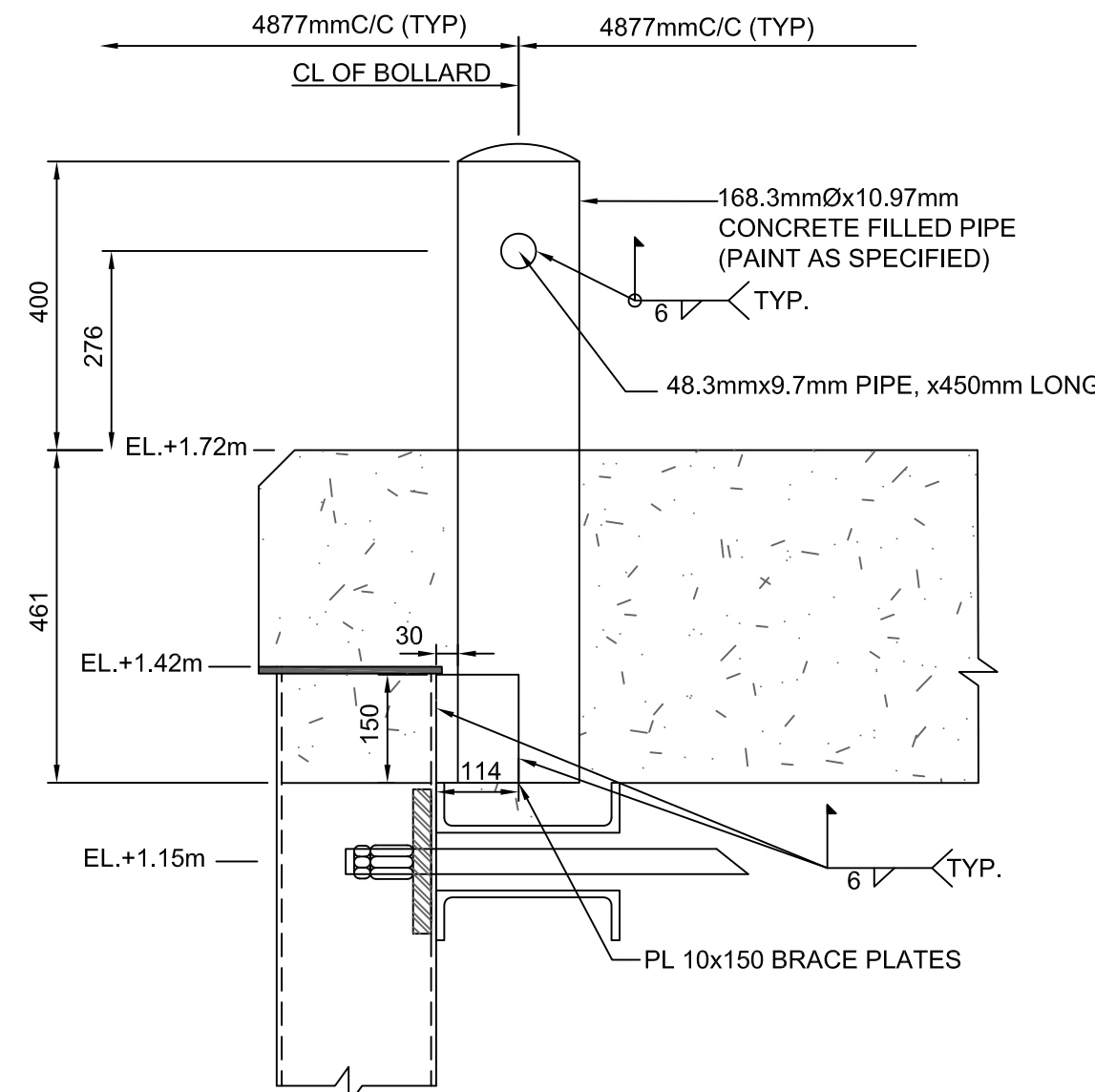
NOTE:
1) EACH LADDER TO HAVE 2 RUNGS BELOW CHART DATUM min.
2) ALL NEW LADDERS TO BE PAINTED AS SPECIFIED PRIOR TO INSTALLATION.



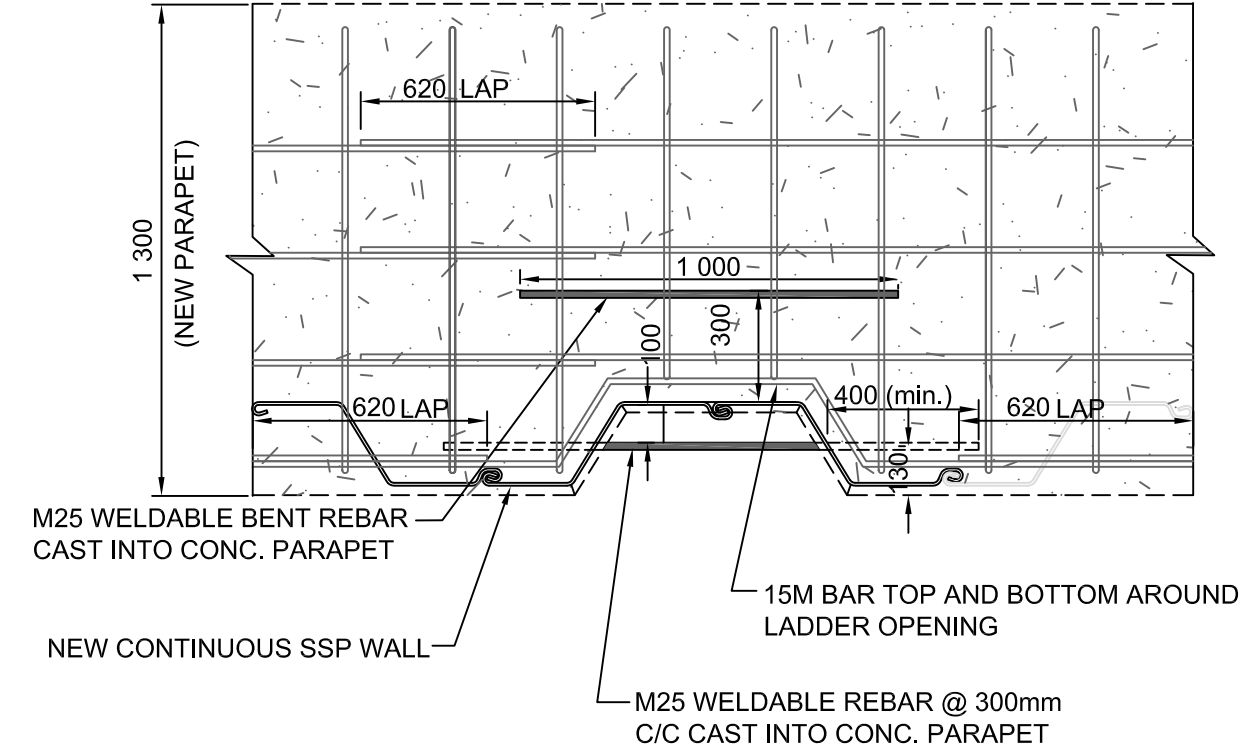
28
9 | 9
TYP. LADDER (TYPE 2) ELEVATION
SCALE: 1:20



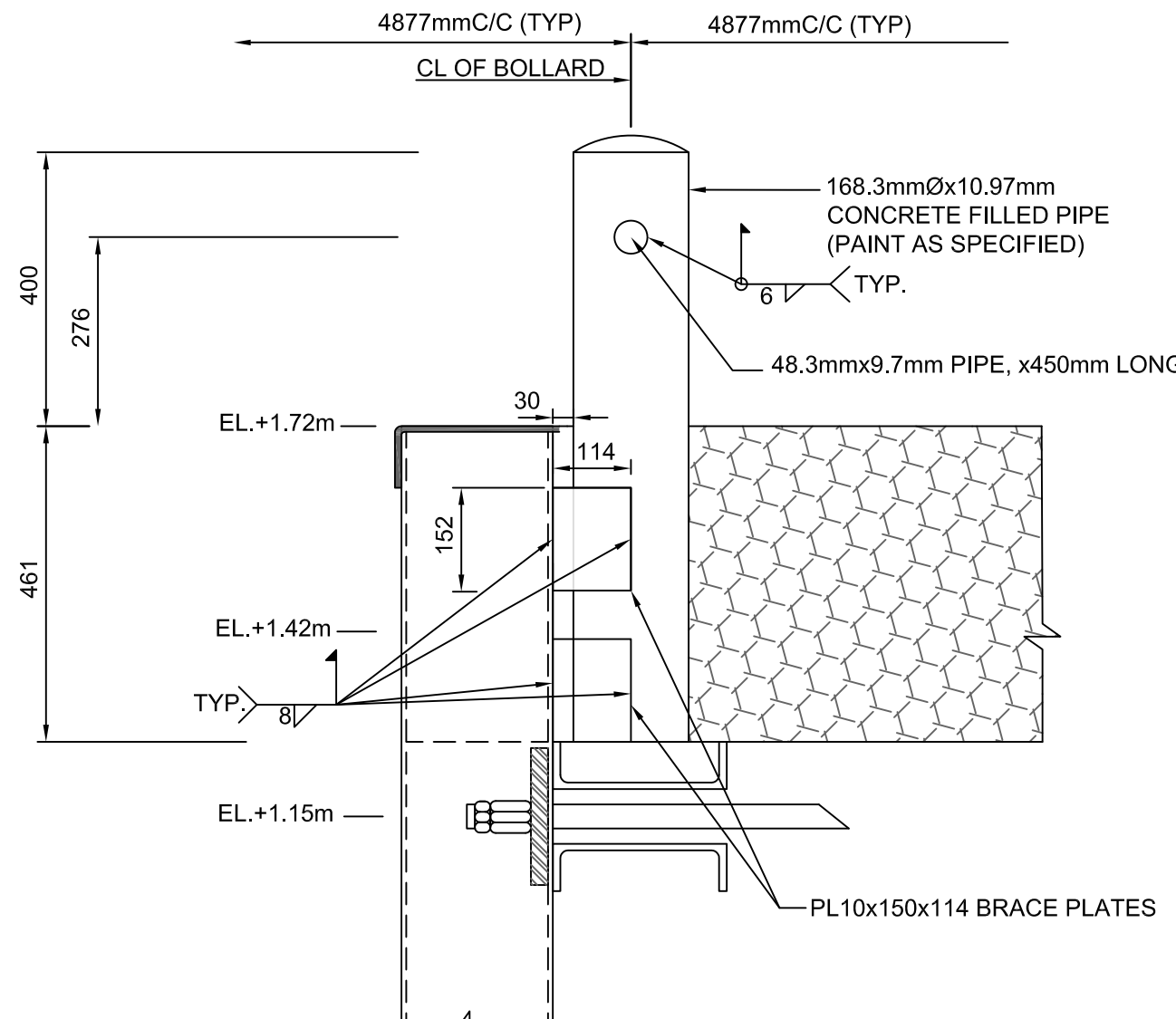
29
9 | 9
TYP. LADDER (TYPE 1) GRAB BAR DETAIL AT STEEL CAP
SCALE: 1:20



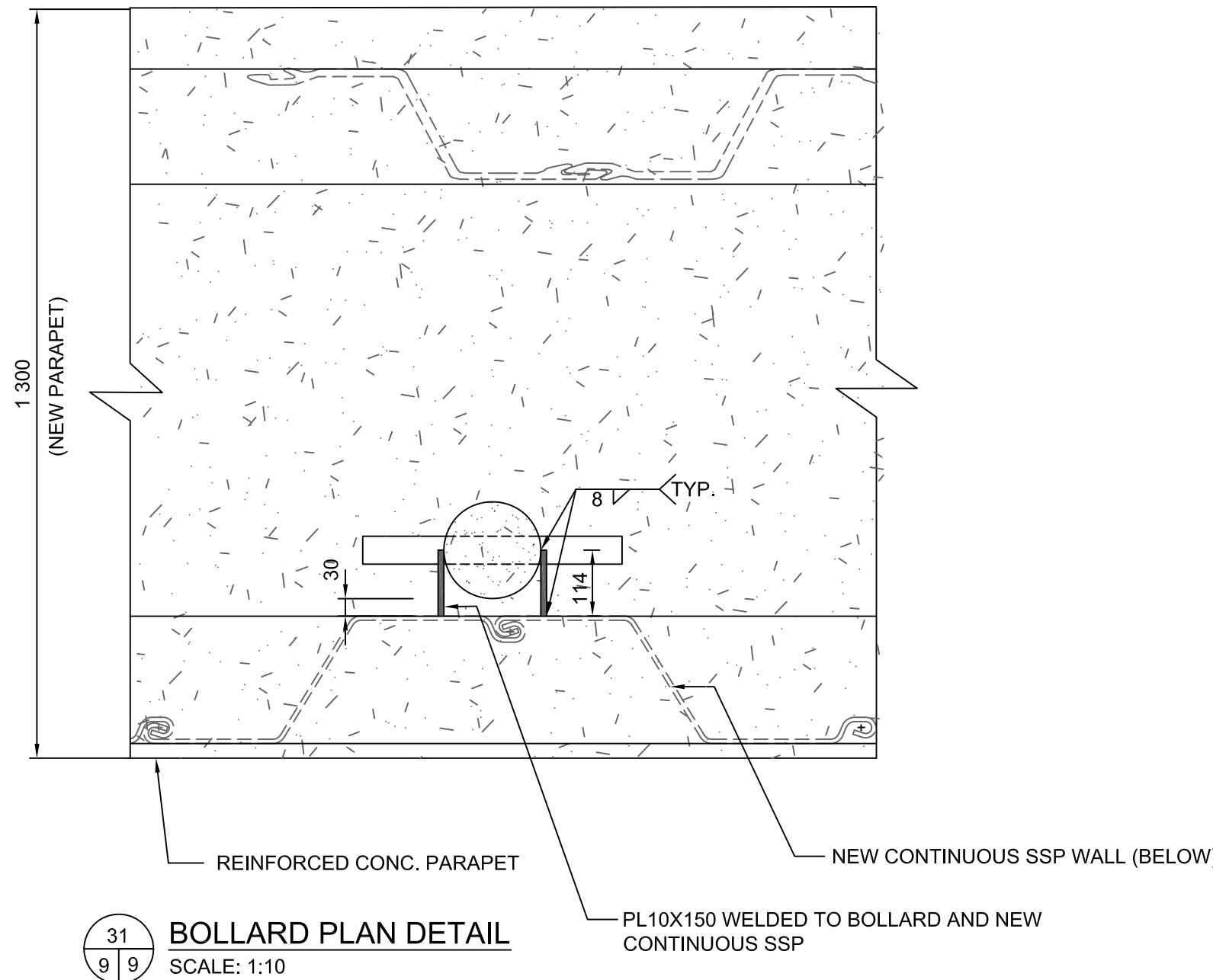
32
4 | 9
BOLLARD DETAIL @ (0+000EP TO 0+144.4.5EP)
SCALE: 1:10



30
9 | 9
TYP. LADDER (TYPE 2) DETAIL AT SSP
SCALE: 1:20

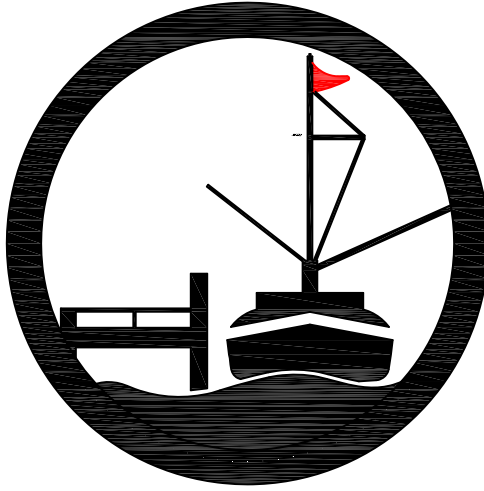


33
4 | 9
BOLLARD DETAIL @ (0+144.4EP TO 384.80±EP)
SCALE: 1:10



31
9 | 9
BOLLARD PLAN DETAIL
SCALE: 1:10

SMALL CRAFT HARBOURS
CENTRAL AND ARCTIC REGION



RIGGS
ENGINEERING
Riggs Engineering Ltd.
1240 Commissioners Rd. W, Suite 205
London, Ontario,
N6K 1C7
Tel: (519) 657-1040
Fax: (519) 657 8631
Website: www.riggsengineering.com

- 1 Detail No.
2 drawing no. - where detail required refers to MA--
3 drawing no. - where detailed refers to MA--

Stamp:



NOTES:

REVISIONS:	DATE:
1 ISSUED FOR TENDER	JUNE/23/2017

SCALE:	CLASS:
AS NOTED	

PROJECT:

2017 EAST HARBOUR WALL
REPAIRS

DESCRIPTION:

TYP. DETAILS

DRAWN: AV	APPROVED: PL
DATE: 2017-03-31	DATE: 2017-03-31

LOCATION:

WHEATLEY, ONTARIO

DRAWING NO.: MA-09	LOCATOR CODE: F2930-160026
-----------------------	-------------------------------