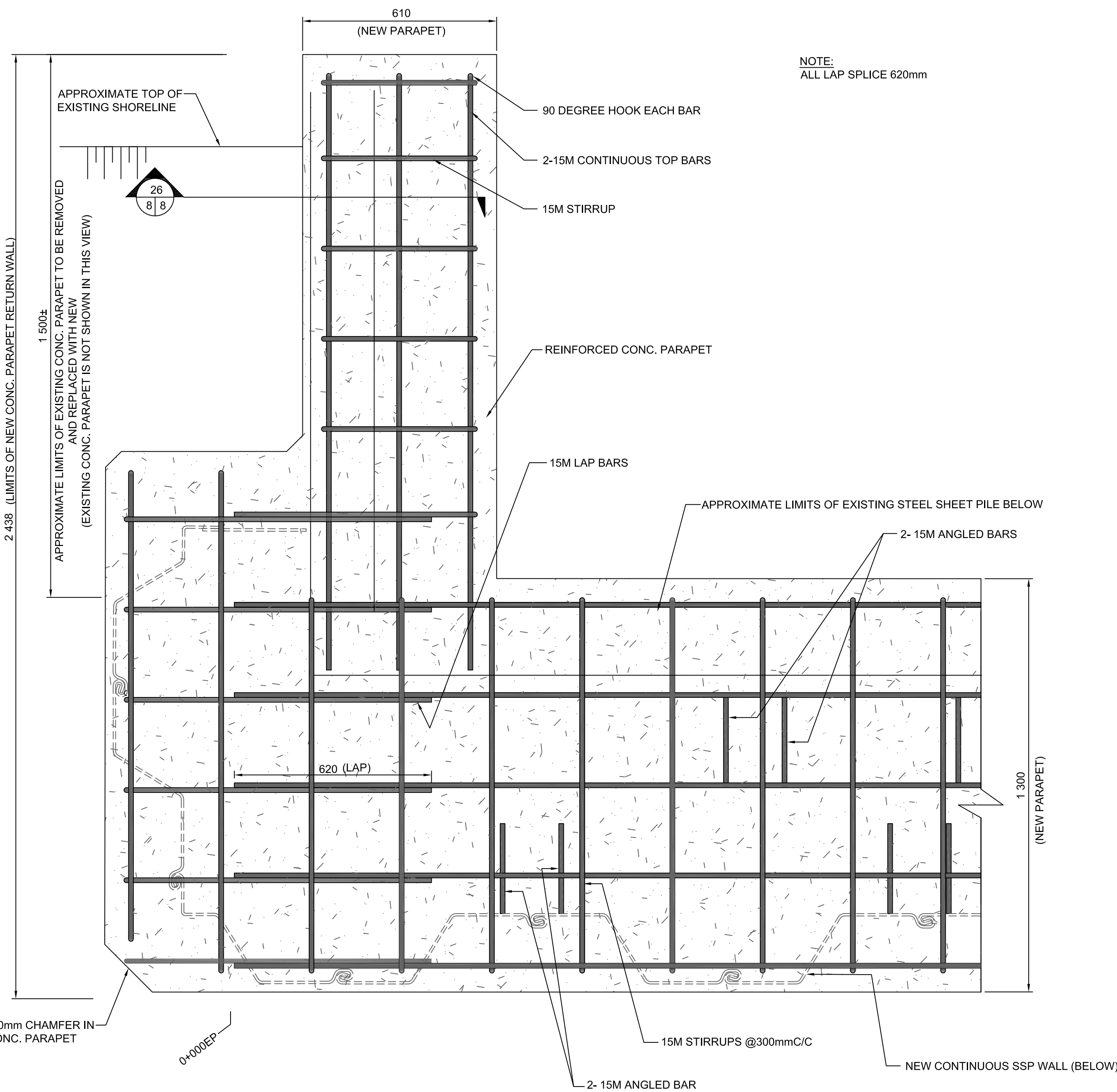
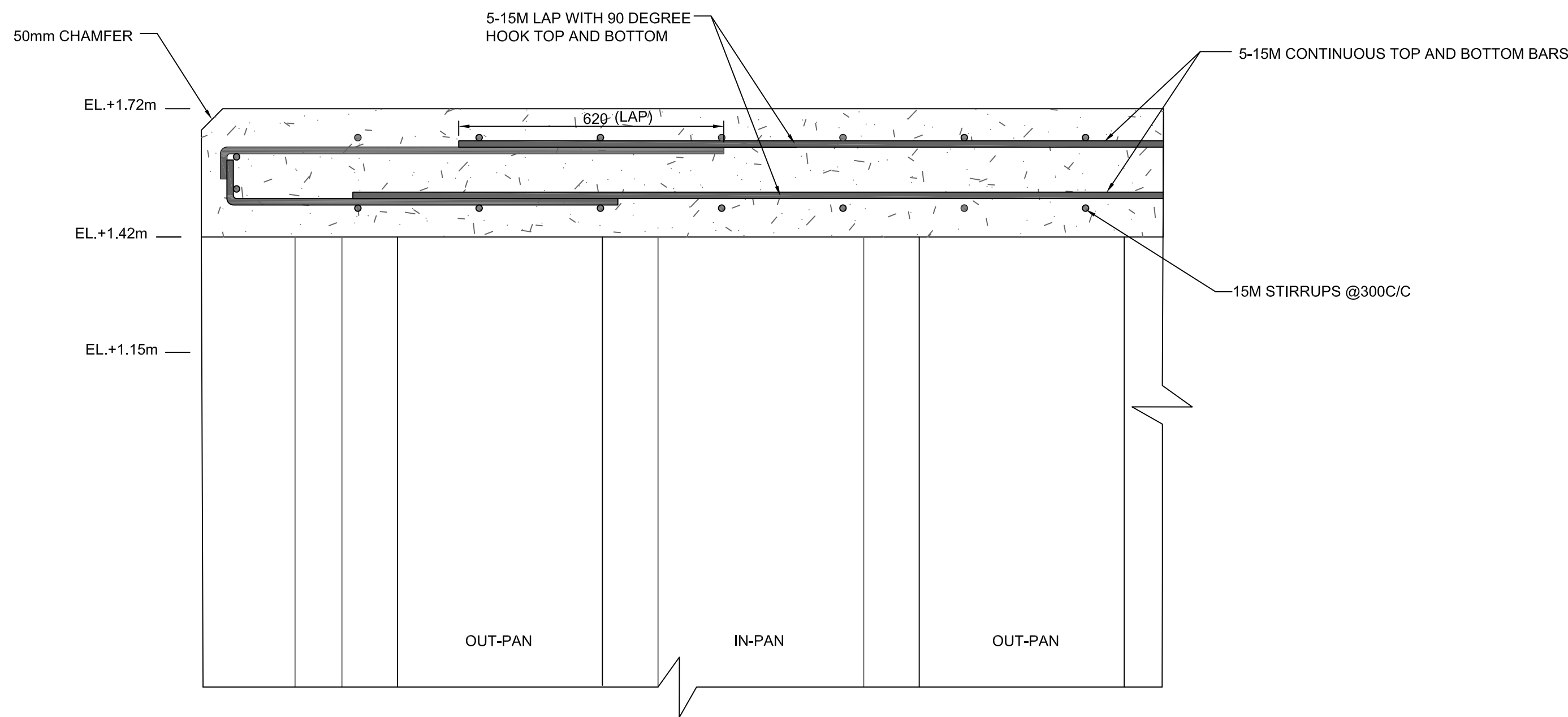


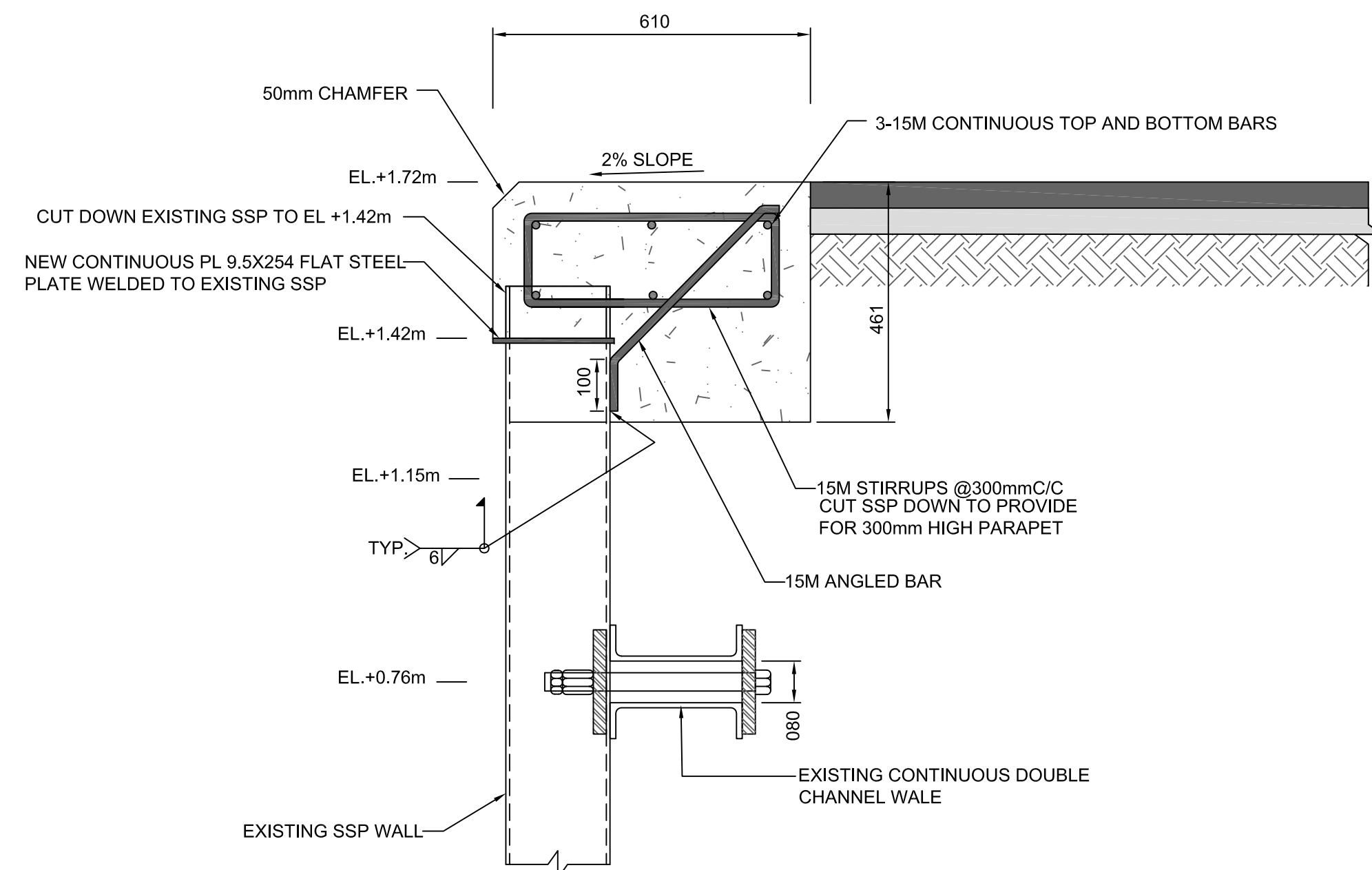
23 TYP. CONC. PARAPET DETAIL (0+000 TO 0+144.4) @ SSP OUT-PAN
SCALE: 1:10



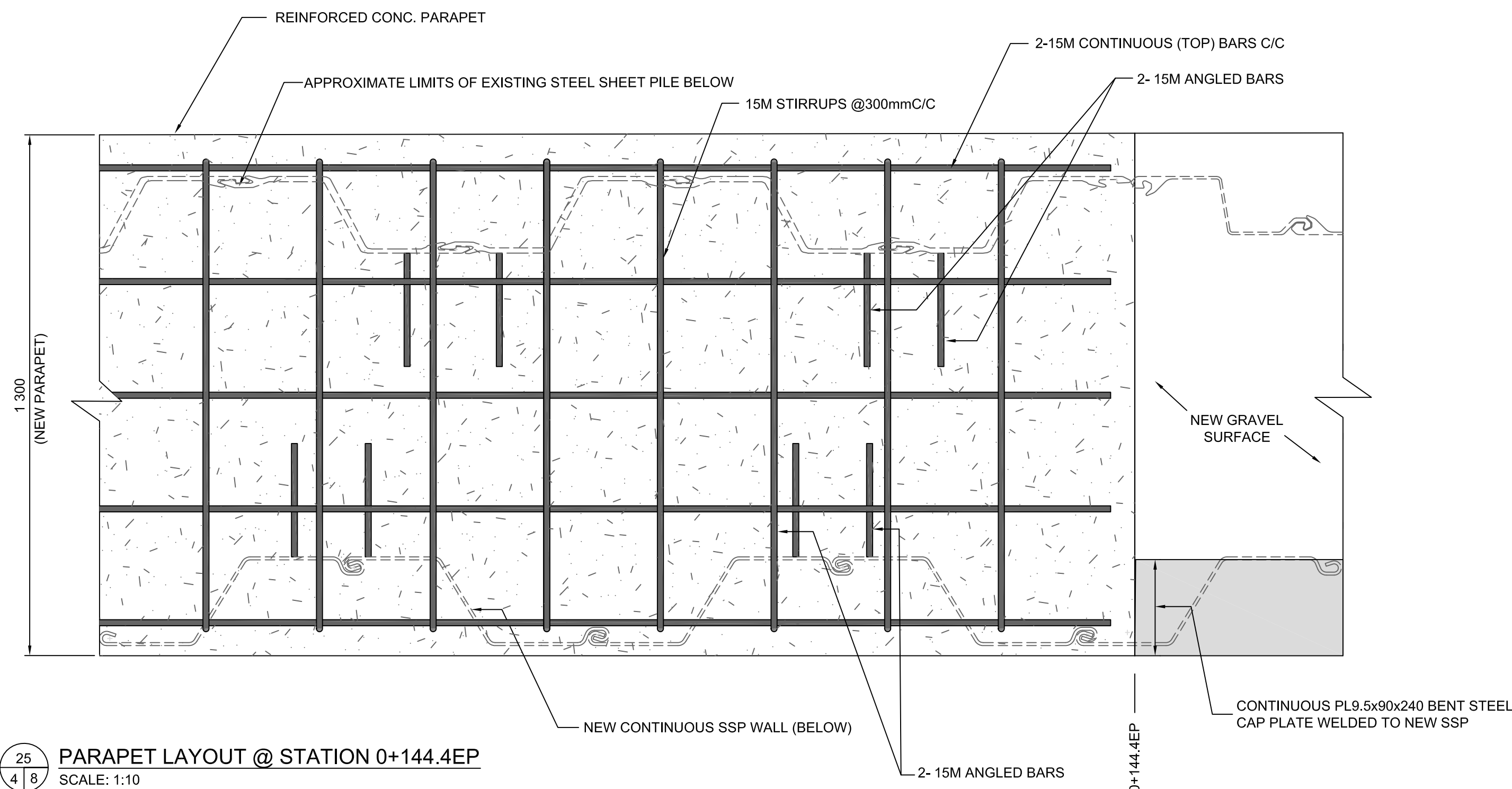
24 PARAPET LAYOUT @ CORNER 0+000EP
SCALE: 1:10



22 TYP. CONC. PARAPET DETAIL (0+000 TO 0+144.4)
SCALE: 1:10

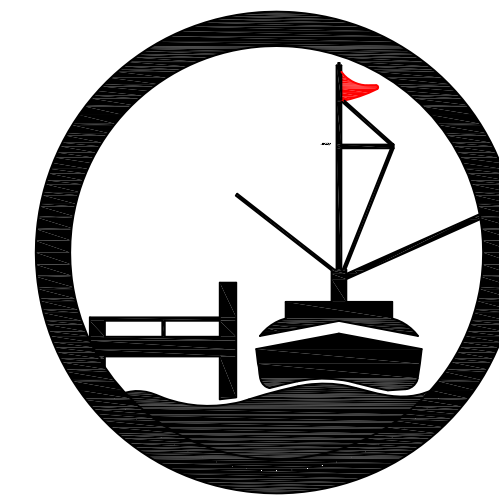


26 NEW CONC. PARAPET @ EXISTING RETURN WALL
SCALE: 1:10



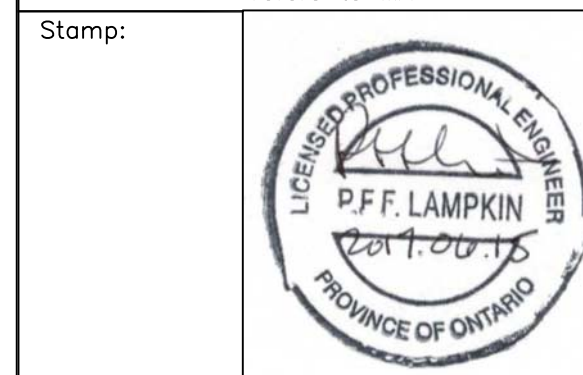
25 PARAPET LAYOUT @ STATION 0+144.4EP
SCALE: 1:10

SMALL CRAFT HARBOURS
CENTRAL AND ARCTIC REGION



Riggs Engineering Ltd.
1240 Commissioners Rd. W, Suite 205
London, Ontario,
N6K 1C7
Tel: (519) 657-1040
Fax: (519) 657 8631
Website: www.riggsengineering.com

- 1 Detail No.
2 drawing no. - where detail required refers to MA-
3 drawing no. - where detailed refers to MA-



REVISIONS:		DATE:
1	ISSUED FOR TENDER	JUNE/23/2017

SCALE:	CLASS:
AS NOTED	

PROJECT:
2017 EAST HARBOUR WALL REPAIRS

DESCRIPTION:
TYP. CONCRETE DETAILS

DRAWN:	APPROVED:
AV	PL
DATE:	DATE:
2017-03-31	2017-03-31

LOCATION:
WHEATLEY, ONTARIO

DRAWING NO.:	LOCATOR CODE:
MA-08	F2930-160026