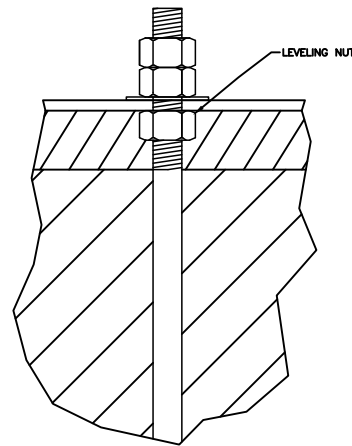
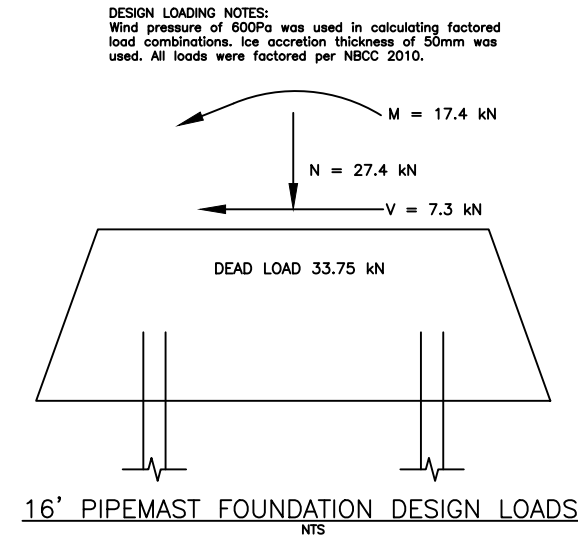
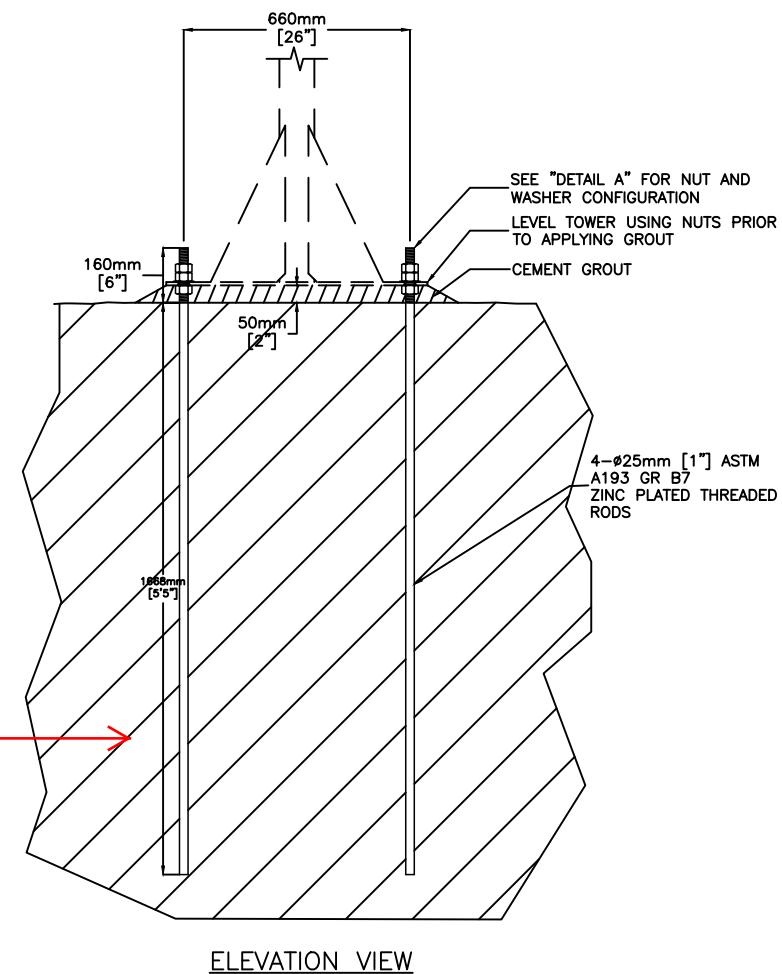


Vendor / Sous-traitant

- ORDER OF INSTALLATION NOTES:**
1. LOCATE INSTALLATION LOCATION AS PER CONFIRMATION BY COAST GUARD
 2. ESTIMATE THE DEPTH REQUIRED FOR LEVELING PRIOR TO DRILLING OF ANY HOLES
 3. USING PLYWOOD TEMPLATE, DRILL 4-Ø28.58MM [1-1/8"] HOLES USING ONE OF THE ACCEPTABLE METHODS OUTLINED UNDER CONCRETE ACCESSORIES, SECTION 031500
 4. CLEAN ALL HOLES AND REMOVE ANY LOOSE MATERIALS
 5. INJECT HILTI RE 500 V3 EPOXY ADHESIVE TO COVER 3/4TH TO 7/8TH THE DEPTH OF EACH HOLE
 6. USE ONE [1] 47.3 FL OZ CARTRIDGE OR TWO [2] 16.9 FL OZ CARTRIDGES PER HOLE
 7. PLACE 4-Ø25MM [1"] ASTM A193 GR B7 ZINC PLATED THREADED RODS IN HOLES IMMEDIATELY AFTER EPOXY INJECTION
 8. REPEAT STEPS 2-6 FOR PROOF LOAD TEST ANCHOR
 9. PROOF LOAD TEST SHALL BE COMPLETED 12 HOURS [MINIMUM] FOLLOWING INSTALLATION
 - ~~10. INSTALL CONCRETE FOOTING AS PER CONCRETE NOTES BELOW~~
 11. TOWER SHALL NOT BE ERECTED UNTIL CONCRETE TESTING INDICATES ADEQUATE STRENGTH DEVELOPMENT
 10. USE LEVELING NUT AS NOTED IN DETAIL A TO INSURE THE TOWER IS PLUMB
 11. UPON COMPLETION OF INSTALLATION, CUT ANY EXCESS THREADS EXTENDING 25MM BEYOND TOP NUT, AND COLD-GALV SPRAY 2 COATS ON EXPOSED END OF ROD.
 12. GROUT - SIKA M-BEDOR APPROVED ALTERNATE.



DETAIL A:
COMPLETE WITH 3 NUTS
AND 1 SQUARE WASHER



Existing Rock →

0	DESCRIPTION	BY	yyyy-mm-dd
rev	description	by	date

Asset - Actif
LL1427 - GULL ROCK
LL1432 THREE PINE ISLAND

Drawing - Dessin
16' PIPEMAST FOUNDATION

designed - conception	date
AB	2017-05-15
drawn - dessiné	date
MF	2017-08-06
checked - vérifié	date
AB	2017-08-06
approved - approuvé	date
BY	2017-08-06

CCG ref. no. - no. réf. GCC	scale - échelle	
LAKE NIPISSING MULTI-SITE	N.T.S.	
drawing no. - no. dessin	sheet-feuille	rev
DWG NO - NO DES	01/01	0

File / Fichier: AB.LL1427 - GULL ROCK - FOUNDATION.DWG - Printed / Imprimé: 2017/06/08 2:42

DWG NO - NO DES

ANSI B

C

B

A

DWG NO - NO DES