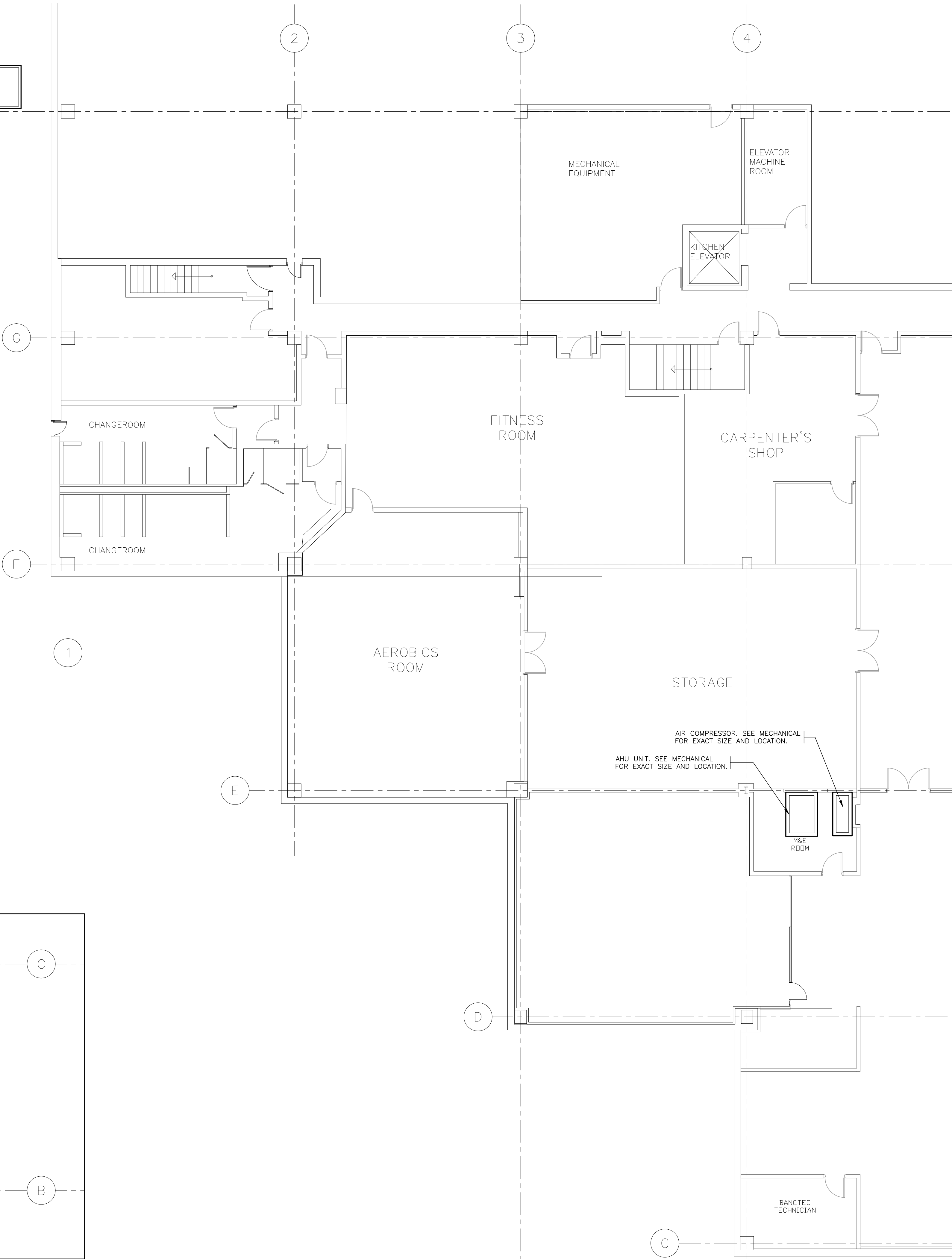


#### DESIGN & DETAILING CRITERIA FOR SUPPLIERS

- COLD FORMED STEEL STUDS**  
STEEL STUDS ARE TO BE DESIGNED AND DETAILED BY STEEL STUDS SUPPLIER. SHOP DRAWINGS ARE TO BE SUBMITTED TO DESIGN TEAM FOR REVIEW. SHOP DRAWINGS ARE TO BE STAMPED AND SIGNED BY A PROFESSIONAL ENGINEER LICENSED IN THE PROVINCE OF ONTARIO. ALL STEEL STUD WORK IS TO BE INSPECTED DURING CONSTRUCTION BY THE STEEL STUD DESIGN ENGINEER.
- MISCELLANEOUS METALS & STEEL STAIRS**  
MISC METALS & STEEL STAIRS ARE TO BE DESIGNED AND DETAILED BY MISC METALS & STEEL STAIRS SUPPLIER. SHOP DRAWINGS ARE TO BE SUBMITTED TO DESIGN TEAM FOR REVIEW. SHOP DRAWINGS ARE TO BE STAMPED AND SIGNED BY A PROFESSIONAL ENGINEER LICENSED IN THE PROVINCE OF ONTARIO. ALL MISC METAL & STEEL STAIR WORK IS TO BE INSPECTED DURING CONSTRUCTION BY THE MISC METALS & STEEL STAIRS DESIGN ENGINEER.
- SEISMIC RESTRAINT OF MECH'L EQUIPMENT & PIPING**  
SEISMIC RESTRAINT OF MECH'L EQUIPMENT & PIPING TO BE DETAILED BY MECH'L EQUIPMENT & PIPING SUPPLIER OR CONTRACTOR. SHOP DRAWINGS ARE TO BE SUBMITTED TO DESIGN TEAM FOR REVIEW. SHOP DRAWINGS ARE TO BE STAMPED AND SIGNED BY A PROFESSIONAL ENGINEER LICENSED IN THE PROVINCE OF ONTARIO. ALL SEISMIC RESTRAINT INSTALLATIONS ARE TO BE INSPECTED DURING CONSTRUCTION BY THE DESIGN ENGINEER OF RECORD
- SEISMIC RESTRAINT OF SUSPENDED CEILINGS**  
SEISMIC RESTRAINT OF SUSPENDED CEILINGS TO BE DETAILED BY CEILING SUPPLIER OR CONTRACTOR. SHOP DRAWINGS ARE TO BE SUBMITTED TO DESIGN TEAM FOR REVIEW. SHOP DRAWINGS ARE TO BE STAMPED AND SIGNED BY A PROFESSIONAL ENGINEER LICENSED IN THE PROVINCE OF ONTARIO. ALL SEISMIC RESTRAINT INSTALLATIONS ARE TO BE INSPECTED DURING CONSTRUCTION BY THE DESIGN ENGINEER OF RECORD

#### NOTE:

INSPECTION REPORTS CREATED AS A RESULT OF THE ABOVE NOTED WORK MUST BE SUBMITTED TO THE CONSTRUCTION MANAGER. CONSTRUCTION MANAGER IS TO PROVIDE COPIES TO THE CONSULTANTS.



Canada

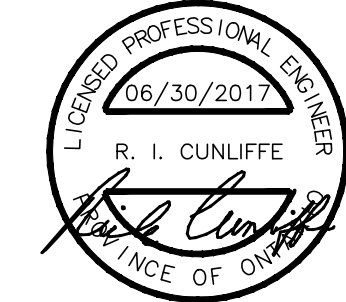


Public Works and  
Government Services  
Canada

Travaux publics et  
services gouvernementaux  
Canada



CUNLIFFE & ASSOCIATES  
CONSULTING STRUCTURAL ENGINEERS  
103-1737 WOODWARD DR. OTTAWA, ON, K2C 6P5  
TEL (613) 726-7242 FAX (613) 726-1461  
Email: <cunliffe@cunliffe.ca>



Contractor to verify all dimensions  
& conditions on site and immediately  
notify the departmental representative  
of all discrepancies.

2 ISSUED FOR TENDER 2017/06/30

1 ISSUED FOR REVIEW 2017/06/16

revisions	description	date
-----------	-------------	------

A	A detail no.	A
C	no. du detail	B
	B location drawing no.	C
	sur dessin no.	
	C drawing no.	
	dessin no.	

project

CANADA REVENUE AGENCY  
MAIL PROCESSING ROOM

1050 NOTRE DAME AVE.,  
SUDBURY, ON.

drawing

dessin

STRUCTURAL SCOPE  
OF WORK AND DETAILS

Designed By R.I.C. Conçu par

Date (yyyy/mm/dd)

Drawn By G.N. Dessiné par

Date (yyyy/mm/dd)

Reviewed By R.I.C. Examiné par

Date (yyyy/mm/dd)

Approved By R.I.C. Approuvé par

Date (yyyy/mm/dd)

Tender CRIS BORS Soumission

Project Manager Administrateur de projets

Project no. No. du projet

R.087411.001

Drawing no. No. du dessin

S1