

CANADA BORDER SERVICES AGENCY

CANOPY STRUCTURE COATING REMEDIATION

DOUGLAS PORT OF ENTRY
220 Highway 99, Surrey BC



300 - 7337 137 Street, Surrey, BC V3W 1A4
T: 604 594 4787
E: office@boldwing-continuum.com

ARCHITECTURAL

BOLDWING CONTINUUM ARCHITECTS INC.
7337 137th STREET, SUITE 300
SURREY, B.C. V3W 1A4

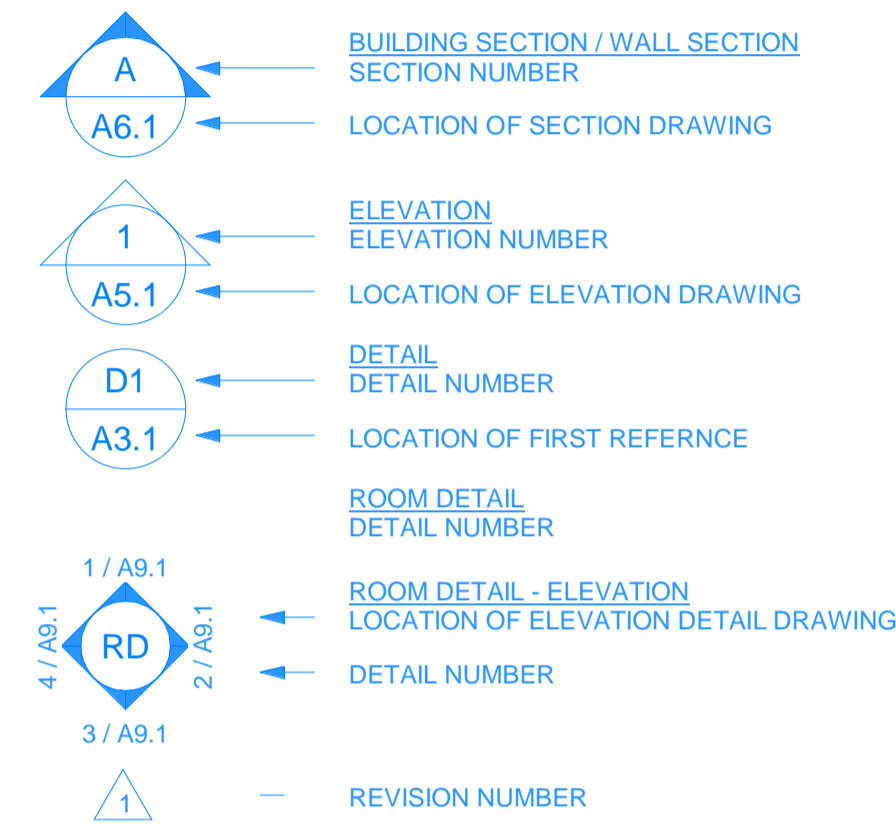
TEL: 604-594-4787 FAX: 604-594-4736
ATTN: MR. ARTHUR BUSE, Architect AIBC, AIA Associate
EMAIL: arthur@boldwing-continuum.com

ATTN: MS. PEGGY PERRY, CSP, LEED AP BD+C
EMAIL: peggy@boldwing-continuum.com

A000 CONSULTANTS, DRAWING LIST, LEGEND (SYMBOLS), PROJECT STATISTICS, ABBREVIATIONS, AND GENERAL NOTES

A200 SITE PLAN
A300 P.I.L CANOPY PLAN & REFLECTED CEILING PLAN
A301 P.I.L CANOPY SOUTH ELEVATION
A302 P.I.L CANOPY SECTIONS
A303 S.I.A & T.I.A CANOPY REFLECTED CEILING PLAN
A304 S.I.A CANOPY ELEVATIONS
A305 S.I.A CANOPY SECTIONS
A306 T.I.A CANOPY ELEVATIONS
A307 DETAILS

LEGEND (SYMBOLS)



4		
3		
2		
1		
0	ISSUED FOR TENDER	16-06-17
Revision / Revision	Description / Description	Date / Date

Client / client
CANADA BORDER SERVICES AGENCY

Project title / Titre du projet
**DOUGLAS PORT OF ENTRY
220 Highway 99, Surrey BC
CANOPY STRUCTURE
COATING REMEDIATION**

Consultant Approval Box Only

Designed by / Concept par
AB

Drawn by / Dessiné par
BCAI

BCAI Project Number
21519

PWGSC, Project Manager / Administrateur de Projets TPSGC
JULIAN HO

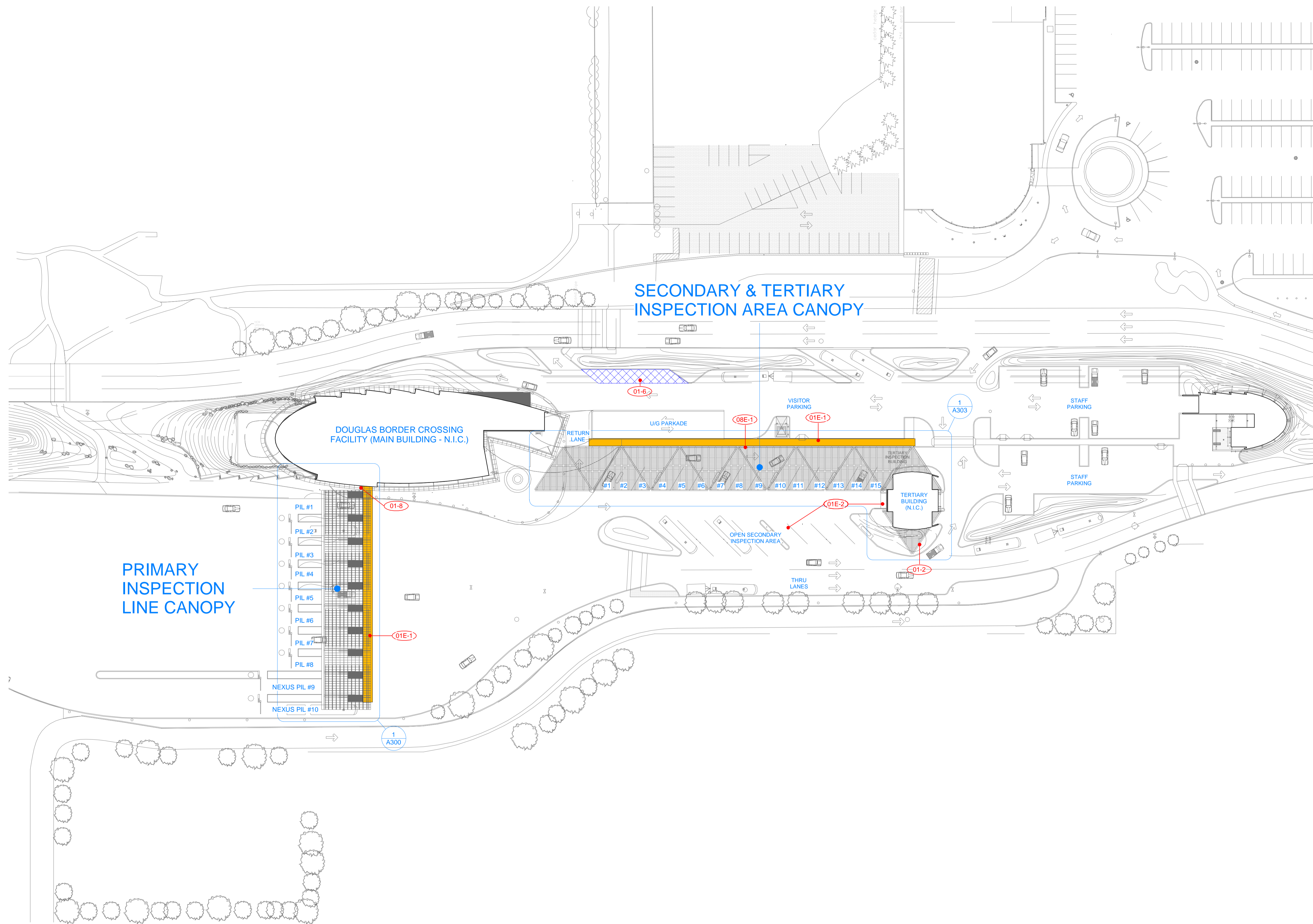
PWGSC, Regional Manager, Architectural and Engineering Services /
Gestionnaire régionale, Services d'architectural et de génie,TPSGC

Drawing title / Titre du dessin
**CONSULTANTS, DRAWING LIST, LEGEND
(SYMBOLS), PROJECT STATISTICS,
ABBREVIATIONS, AND GENERAL NOTES**

PWGSC Project no. / no. du Projet R.080020.001	Sheet / Feuille A000	Revision no. / La Revision no.
---	--------------------------------	---



No.	DESCRIPTION
01-2	CONTRACTOR TO TEMPORARILY REMOVE AND STORE EXISTING EQUIPMENT ON SITE AS DIRECTED. EQUIPMENT TO BE RESTORED AFTER REMEDIATION
01-6	CONTRACTOR ASSIGNED WORK AREA - STAGING, STORAGE & CONTRACTOR TRAILER(S)
01-8	EXISTING PEDESTRIAN AND BICYCLE WALKWAY TO BE ACCESSIBLE AND OPERATIONAL (INCLUDING DURING PHASE 1). PROVIDE PROTECTION - REFER TO SPECIFICATIONS
01E-1	EXISTING PEDESTRIAN WALKWAY TO BE ACCESSIBLE AND OPERATIONAL. PROVIDE PROTECTION - REFER TO SPECIFICATIONS
01E-2	EXISTING OPEN SECONDARY INSPECTION AREA AND ENTRY/EXIT TO TERTIARY INSPECTION BUILDING TO REMAIN ACCESSIBLE AND OPERATIONAL
08E-1	SIA: EXISTING PEDESTRIAN HSS STEEL & GLAZING SCREEN - PROTECT GLAZING & ALUMINUM FRAME DURING REMEDIATION WORK OR REMOVE, STORE AND REINSTALL TO ORIGINAL DETAIL. IF ALTERNATIVE OPTION #01, WORK TO INCLUDE TOP RAIL ONLY



PRIMARY
INSPECTION
LINE CANOPY

SECONDARY & TERTIARY
INSPECTION AREA CANOPY

DOUGLAS BORDER CROSSING
FACILITY (MAIN BUILDING - N.I.C.)

TERTIARY
BUILDING
(N.I.C.)

SITE PLAN - OVERALL
N.T.S

**SHOP
DRAWINGS:**

Prepare and submit to *Boldwing Continuum Architects Inc.* one electronic copy of all required shop drawings with supporting documents and two samples of materials where specified WITHOUT EXCEPTION. Shop drawings not reviewed and stamped by Contractor, verifying field measurements and compliance with contract documents will be REJECTED. Shop drawings to show construction details of all architectural elements; general arrangements, thicknesses, finishes, location of all services, typical and special installation conditions, material being supplied, and all connections, attachments, anchorages and locations of exposed fastenings as applicable. Shop drawings to incorporate applicable key plan, plans, elevations, sections, and details for all work submitted. No materials to be ordered and no work to be fabricated shall be undertaken until shop drawings and other related submittals been reviewed.

**COLOUR
PRINTING:**

Drawings have been prepared in colour for clarity and must be printed in colour. Consultants and Contractors are responsible for any misinterpretations caused as a result of printing in black and white

0 10 20 30 40 50 60 70 80 90 100mm

3		
2		
1		
0	ISSUED FOR TENDER	16-06-17

Revision /	Description / Description	Date / Date
------------	---------------------------	-------------

Client / client
**CANADA BORDER SERVICES
AGENCY**

Project title / Titre du projet
**DOUGLAS PORT OF ENTRY
220 Highway 99, Surrey BC
CANOPY STRUCTURE
COATING REMEDIATION**

Consultant Approval Box Only

Designed by / Concept par
AB

Drawn by / Dessine par
BCAI Project Number
21519

PWGSC, Project Manager / Administrateur de Projets TPSPC
JULIAN HO

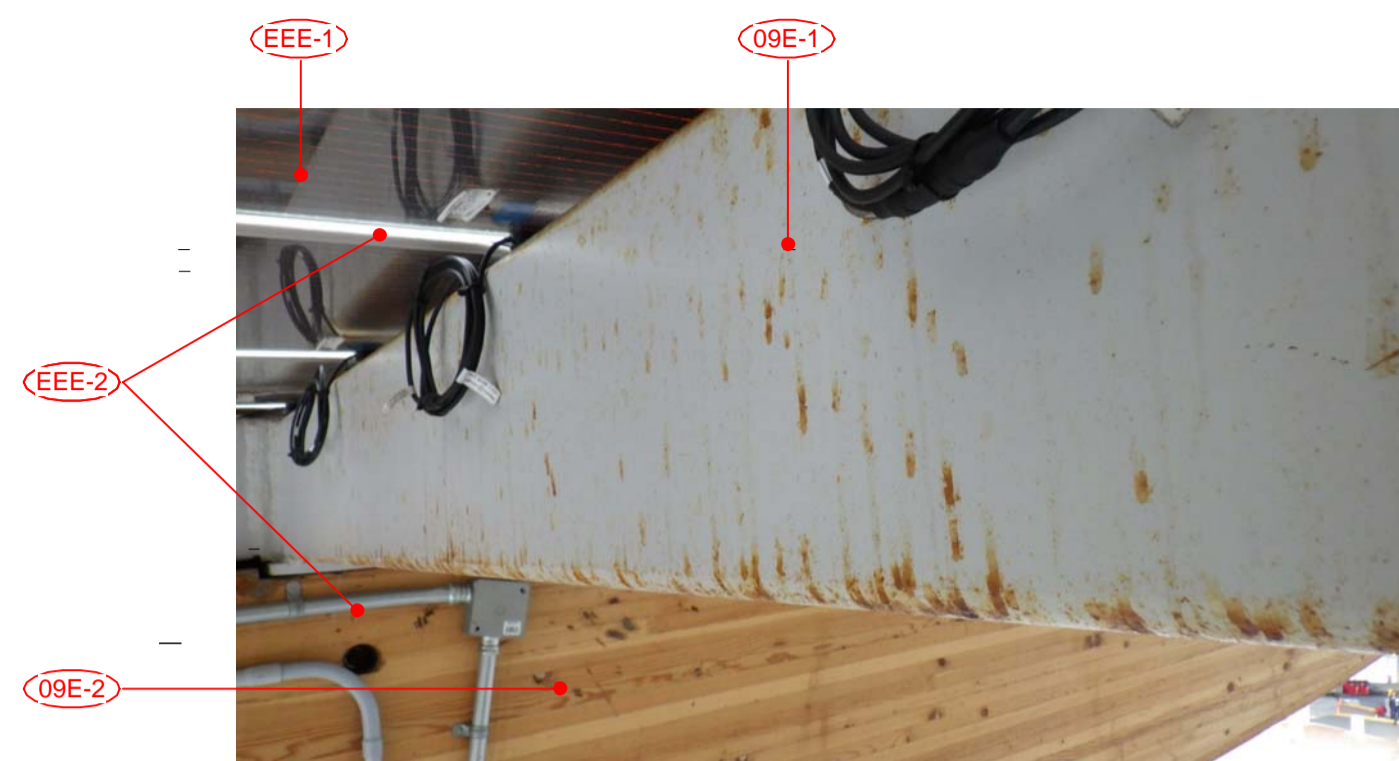
PWGSC, Regional Manager, Architectural and Engineering Services /
Gestionnaire régionale, Services d'architectural et de génie,TPSPC

Drawing title / Titre du dessin
SITE PLAN

PWGSC Project no. / no. du Projet R.080020.001	Sheet / Feuille A200	Revision no. / La Revision no.
---	--------------------------------	---



3 PHOTOVOLTAIC PANELS
A300 TYPICAL EXTG CONDITION OF PV PANEL UNDERSIDE



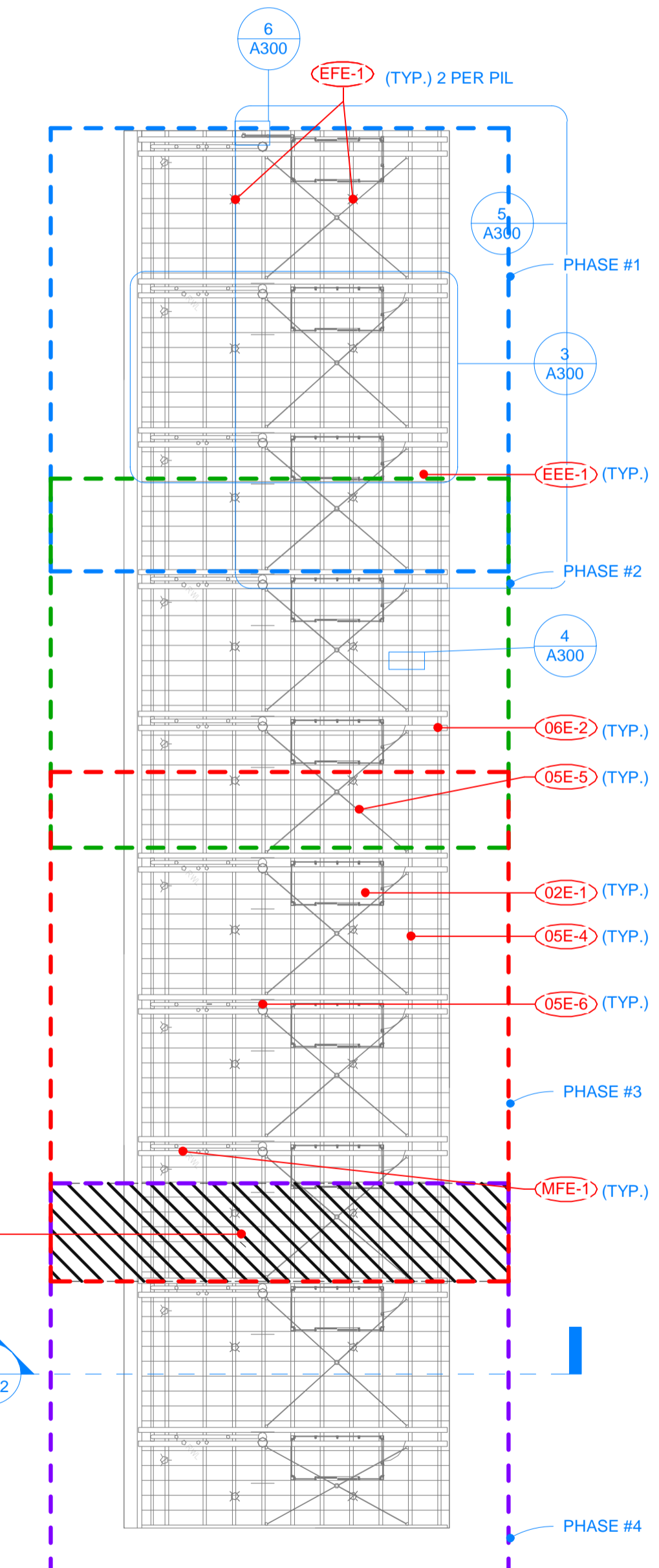
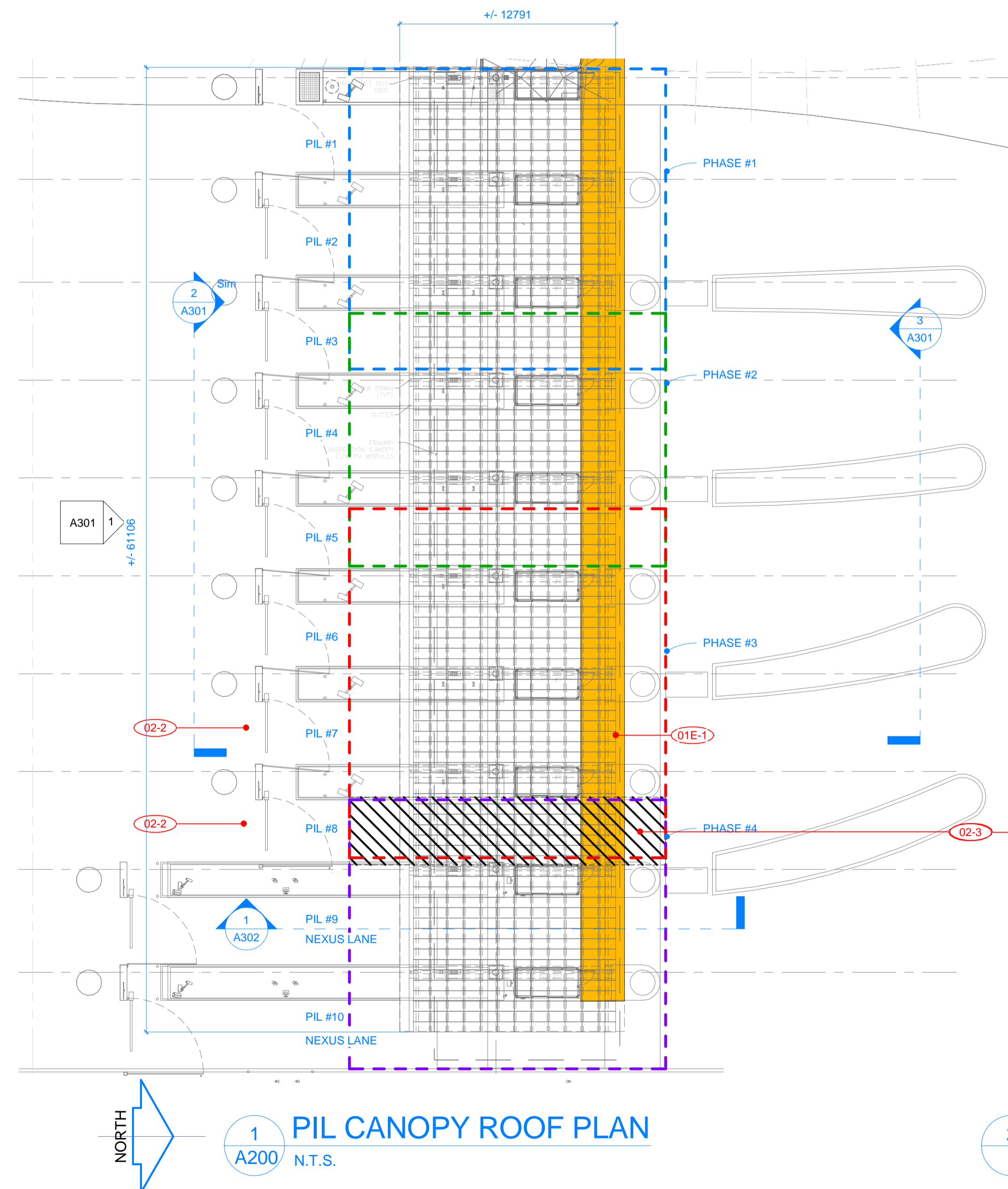
4 STEEL SUPPORT & PV PANEL WIRING
A300 TYPICAL EXTG CONDITION OF STEEL MEMBER WITH PV PANEL AND WIRING ABOVE



5 STEEL BRACING
A300 TYPICAL EXTG CONDITION OF STEEL RINGS, ROD AND SUPPORTS



6 STEEL COLUMN TO GLULAM BEAM
A300 TYPICAL EXTG CONDITION OF STEEL AND NEW SEALANT APPLICATION TO STEEL BRACE AT GLULAM BEAM



No.	DESCRIPTION
01E-1	EXISTING PEDESTRIAN WALKWAY TO BE ACCESSIBLE AND OPERATIONAL. PROVIDE PROTECTION - REFER TO SPECIFICATIONS
02-2	TEMPORARY NEXUS LANE(S) - TO BE UTILIZED DURING PIL CANOPY PHASE #4 WORK
02-3	SUSPENDED SCAFFOLDING/HOARDING ABOVE TO ALLOW ON-GOING OPERATION OF NEXUS LANE DURING REMEDIATION WORK FOR PHASES #3 AND #4.
02E-1	EXISTING PIL BOOTH. PROTECT DURING WORK - REFER TO SPECIFICATIONS
05-1	PIL PERFORATED METAL PANEL: FABRICATE & INSTALL NEW PERFORATED ALUMINUM PANEL TO EXISTING PROFILE & SIZE. FASTEN WITH COMPATIBLE FASTENERS FOR DISSIMILAR MATERIALS. REINSTALL & RECONNECT DIGITAL SIGNAGE - REFER TO SPECIFICATIONS
05E-4	EXISTING HSS STRUCTURAL STEEL ROOF FRAMING MEMBER TO BE REMEDIATED
05E-5	EXISTING STRUCTURAL STEEL CROSS BRACE MEMBER TO BE REMEDIATED
05E-6	EXISTING HSS STRUCTURAL STEEL COLUMN MEMBER TO BE REMEDIATED
06E-2	EXISTING GLULAM BEAM TO BE REMEDIATED - REFER TO SPECIFICATIONS
07-1	PIL - AFTER FINAL COATING, INSTALL CONTINUOUS BACKER ROD & APPLY SEALANT JOINT BETWEEN STEEL MEMBER & GLULAM BEAM - REFER TO SPECIFICATIONS
09E-1	PIL & SIA/TIA: CLEAN, PREPARE & RECOAT STEEL SURFACE - REFER TO SPECIFICATIONS (CONTRACTOR TO CONFIRM SPECIFIED OR ALTERNATIVE OPTION #01 METHOD IN BID). CALL FOR THIRD PARTY INSPECTION AFTER COMPLETION OF SURFACE PREPARATION & AFTER EACH COAT
09E-2	PIL: CLEAN, SAND TO REMOVE EXISTING COATING, STAIN TO MATCH MAIN BUILDING AND TOP COAT GLULAM BEAMS - REFER TO SPECIFICATIONS. CALL FOR THIRD PARTY INSPECTION AFTER COMPLETION OF SURFACE PREPARATION & AFTER EACH COAT
EEE-1	PIL: EXISTING PHOTOVOLTAIC PANEL (TYPE: GLASWERKE ARNOLD - VOLTARLUX ASIOPAK-38-SS) - PV EXPERIENCED PERSONNEL TO TEMPORARILY REMOVE & STORE AS PHASED REMEDIATION WORK PROGRESSES. PROTECT WIRING. NUMBER AND RECORD PANELS, MAKING NOTE OF EXISTING PANELS WHICH ARE NOT OPERATIONAL - REFER TO SPECIFICATIONS. LATER PREPARE SURFACES FOR REINSTALLATION (SEALANT) IN ACCORDANCE WITH MANUFACTURER'S WRITTEN INSTRUCTIONS. RE-INSTALL OR INSTALL OWNER SUPPLIED REPLACEMENT PANELS AS DIRECTED. CONFIRM WORKING OPERATION ONCE RECONNECTED.
EEE-2	PIL & SIA/TIA: EXISTING ELECTRICAL CONDUIT: TEMPORARILY UNFASTEN DURING REMEDIATION WORK TO PERMIT REMEDIATION OF STEEL MEMBER AND GLULAM BEAM. TEMPORARILY SUPPORT CONDUIT AS REQUIRED & REFASTEN WITH NEW GALVANIZED FASTENERS
EFE-1	PIL & SIA/TIA: EXISTING LIGHT FIXTURES - TEMPORARILY REMOVE, STORE, REINSTALL & RECONNECT AFTER REMEDIATION WORK COMPLETE. PROVIDE TEMPORARY LIGHTING AS REQUIRED TO COMPLETE WORK - REFER TO SPECIFICATIONS
EFE-2	PIL: EXISTING DIGITAL SIGNAGE - AS PHASED WORK PROGRESSES, PATISSON SIGN GROUP (RETAINED BY CONTRACTOR) TO TEMPORARILY REMOVE SIGN PANELS AND ASSOCIATED COMPONENTS, STORE, REINSTALL & RECONNECT AFTER REMEDIATION WORK COMPLETE. CONTRACTOR TO PROVIDE TEMPORARY CONES AND/OR BARRICADES TO DIRECT TRAFFIC TOWARDS OPEN LANES. COORDINATE WITH CBSA FACILITY PERSONNEL
MFE-1	PIL & SIA/TIA: EXISTING RAINWATER LEADERS - PROTECT OR TEMPORARILY REMOVE & STORE. PROVIDE TEMPORARY DRAINAGE IF REMOVED. REINSTALL TO ORIGINAL DETAIL.

Revision / Revision	Description / Description	Date / Date
3		
2		
1		
0	ISSUED FOR TENDER	16-06-17

Client / client
CANADA BORDER SERVICES AGENCY

Project title / Titre du projet
**DOUGLAS PORT OF ENTRY
220 Highway 99, Surrey BC
CANOPY STRUCTURE
COATING REMEDIATION**

Designed by / Concept par
AB

Drawn by / Dessiné par
BCAI Project Number
21519

PWGSC, Project Manager / Administrateur de Projets TPSGC
JULIAN HO

PWGSC, Regional Manager, Architectural and Engineering Services / Gestionnaire régionale, Services d'architectural et de génie,TPSGC

Drawing title / Titre du dessin
PIL CANOPY PLAN & REFLECTED CEILING PLAN

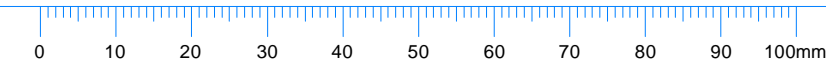
PWGSC Project no. / no. du Projet
R.080020.001

Sheet / Feuille
A300

Revision no. / La Revision no.
0

SHOP DRAWINGS: Prepare and submit to *Bolding Continuum Architects Inc.* one electronic copy of all required shop drawings with supporting documents and two samples of materials where specified WITHOUT EXCEPTION. Shop drawings not reviewed and stamped by Contractor, verifying field measurements and compliance with contract documents will be REJECTED. Shop drawings to show construction details of all architectural elements; general arrangements, thicknesses, finishes, location of all services, typical and special installation conditions, material being supplied, and all connections, attachments, anchorages and locations of exposed fastenings as applicable. Shop drawings to incorporate applicable key plan, plans, elevations, sections, and details for all work submitted. No materials to be ordered and no work to be fabricated shall be undertaken until shop drawings and other related submittals been reviewed.

COLOUR PRINTING: Drawings have been prepared in colour for clarity and must be printed in colour. Consultants and Contractors are responsible for any misinterpretations caused as a result of printing in black and white



No.	DESCRIPTION
03E-1	PIL & SIA/TIA: EXISTING CONCRETE COLUMN - PROTECT & COVER DURING REMEDIATION WORK
05E-2	SIA/TIA: EXISTING GALVANIZED METAL ROOF DECK - PROTECT DECK DURING REMEDIATION WORK
05E-8	EXISTING STRUCTURAL STEEL ROOF BEAM TO BE REMEDIATED, CLEAN, PREPARE & RECOAT STEEL SURFACE - REFER TO SPECIFICATIONS. CALL FOR THIRD PARTY INSPECTION AFTER COMPLETION OF SURFACE PREPARATION & AFTER EACH COAT
07E-1	SIA/TIA: EXISTING PREFINISHED METAL FLASHING, TEMPORARILY DISCONNECT & PROTECT OR REMOVE & STORE AS REQUIRED TO COMPLETE REMEDIATION WORK. REMOVE EXISTING SEALANTS, RECONNECT OR REINSTALL FLASHING & APPLY NEW SEALANT
07E-2	TIA: PROTECT EXISTING ROOF, CLERESTORY GLAZING & BUILDING ENVELOPE DURING REMEDIATION WORK
08E-1	SIA: EXISTING PEDESTRIAN HSS STEEL & GLAZING SCREEN - PROTECT GLAZING & ALUMINUM FRAME DURING REMEDIATION WORK OR REMOVE, STORE AND REINSTALL TO ORIGINAL DETAIL. IF ALTERNATIVE OPTION #01, WORK TO INCLUDE TOP RAIL ONLY
09E-1	PIL & SIA/TIA: CLEAN, PREPARE & RECOAT STEEL SURFACE - REFER TO SPECIFICATIONS (CONTRACTOR TO CONFIRM SPECIFIED OR ALTERNATIVE OPTION #01 METHOD IN BID). CALL FOR THIRD PARTY INSPECTION AFTER COMPLETION OF SURFACE PREPARATION & AFTER EACH COAT
ECE-1	PIL & SIA/TIA: EXISTING SECURITY CAMERAS - COORDINATE PROTECTION WITH CBSA FACILITY PERSONNEL
EEE-2	PIL & SIA/TIA: EXISTING ELECTRICAL CONDUIT: TEMPORARILY UNFASTEN DURING REMEDIATION WORK TO PERMIT REMEDIATION OF STEEL MEMBER AND GLULAM BEAM. TEMPORARILY SUPPORT CONDUIT AS REQUIRED & REFASTEN WITH NEW GALVANIZED FASTENERS
EFE-1	PIL & SIA/TIA: EXISTING LIGHT FIXTURES - TEMPORARILY REMOVE, STORE, REINSTALL & RECONNECT AFTER REMEDIATION WORK COMPLETE. PROVIDE TEMPORARY LIGHTING AS REQUIRED TO COMPLETE WORK - REFER TO SPECIFICATIONS
MFE-1	PIL & SIA/TIA: EXISTING RAINWATER LEADERS - PROTECT OR TEMPORARILY REMOVE & STORE. PROVIDE TEMPORARY DRAINAGE IF REMOVED. REINSTALL TO ORIGINAL DETAIL
MSE-1	SIA/TIA: CLEAN, PREPARE & RECOAT FIRE SUPPRESSION PIPING - REFER TO SPECIFICATIONS. CALL FOR THIRD PARTY INSPECTION AFTER COMPLETION OF SURFACE PREPARATION & AFTER EACH COATING. FIRE SUPPRESSION SYSTEM MUST REMAIN OPERATIONAL DURING REMEDIATION WORK
MSE-2	FIRE SUPPRESSION THROUGHOUT - TO BE REMEDIATED

Revision / Revision	Description / Description	Date / Date
3		
2		
1		
0	ISSUED FOR TENDER	16-06-17

Client / client
CANADA BORDER SERVICES AGENCY

Project title / Titre du projet
**DOUGLAS PORT OF ENTRY
220 Highway 99, Surrey BC
CANOPY STRUCTURE
COATING REMEDIATION**

Consultant Approval Box Only
Designed by / Concept par
AB
Drawn by / Dessine par
BCAI Project Number
21519

PWGSC, Project Manager / Administrateur de Projets TPSGC
JULIAN HO
PWGSC, Regional Manager, Architectural and Engineering Services /
Gestionnaire régionale, Services d'architectural et de génie,TPSGC

Drawing title / Titre du dessin
**SIA & TIA CANOPY
REFLECTED CEILING PLAN**

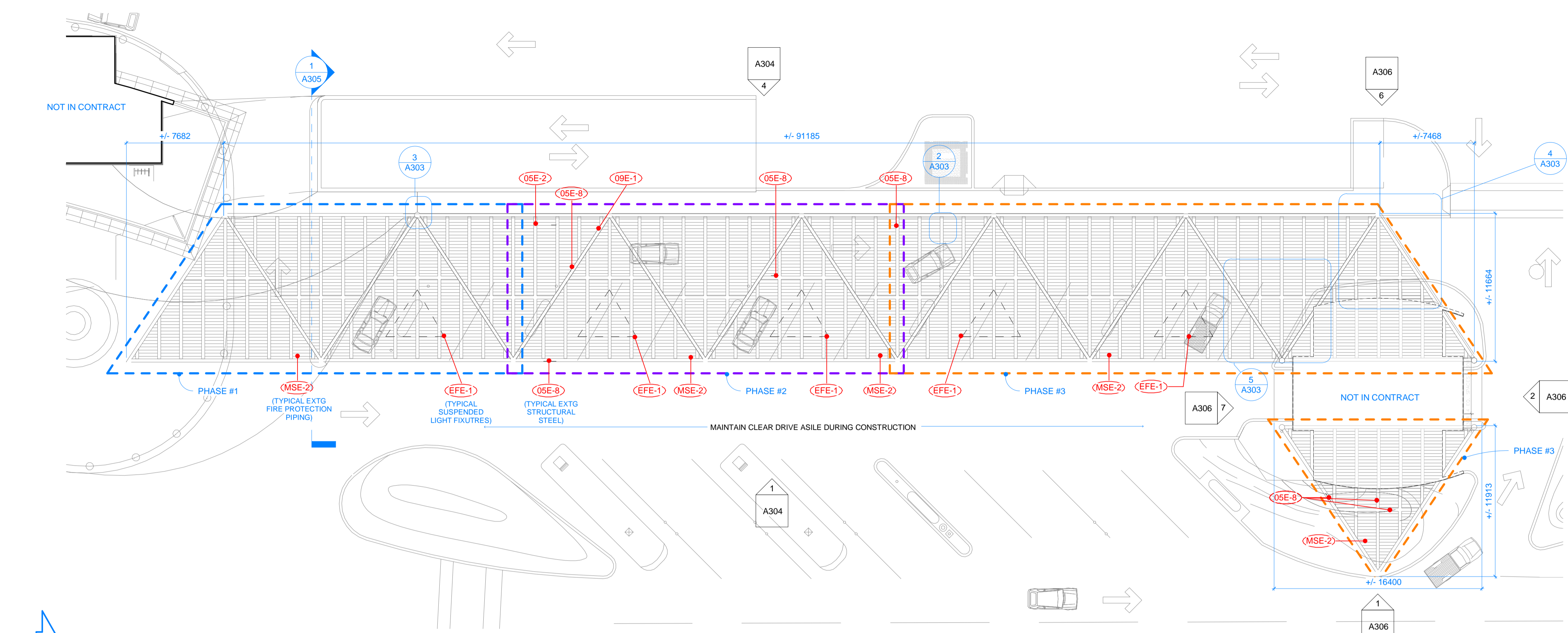
PWGSC Project no. / no. du Projet
R.080020.001
Sheet / Feuille
A303
Revision no. /
La
Revision
no.

Drawings have been prepared in colour for clarity and must be printed in colour. Consultants and Contractors are responsible for any misinterpretations caused as a result of printing in black and white

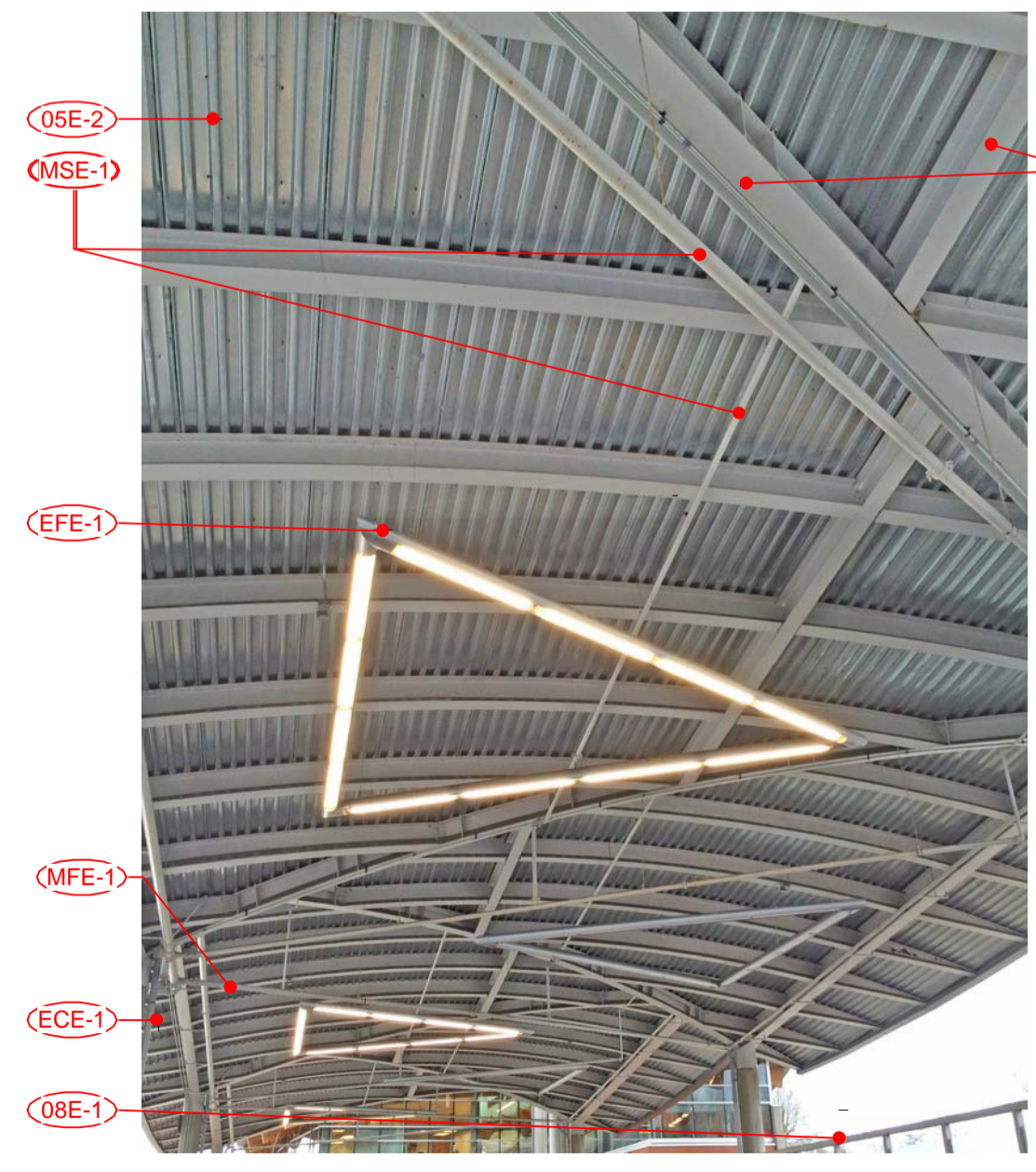
**COLOUR
PRINTING:**

**SHOP
DRAWINGS:**

Prepare and submit to *Boldwing Continuum Architects Inc.* one electronic copy of all required shop drawings with supporting documents and two samples of materials where specified WITHOUT EXCEPTION. Shop drawings not reviewed and stamped by Contractor, verifying field measurements and compliance with contract documents will be REJECTED. Shop drawings to show construction details of all architectural elements; general arrangements, thicknesses, finishes, location of all services, typical and special installation conditions, material being supplied, and all connections, attachments, anchorages and locations of exposed fastenings as applicable. Shop drawings to incorporate applicable key plan, plans, elevations, sections, and details for all work submitted. No materials to be ordered and no work to be fabricated shall be undertaken until shop drawings and other related submittals been reviewed.



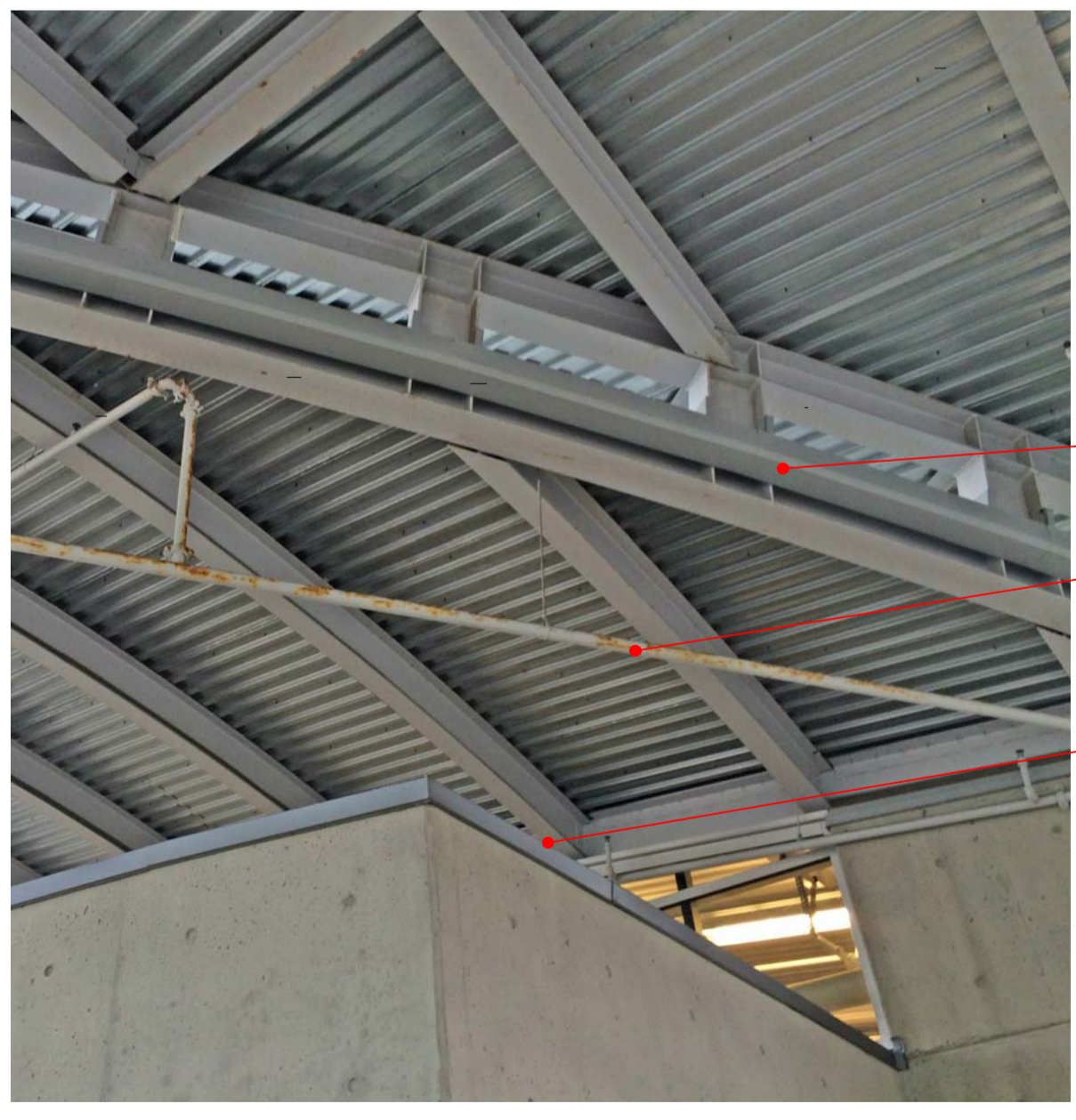
1 SIA AND TIA CANOPY REFLECTED CEILING PLAN
N.T.S.



2 SIA CANOPY UNDERSIDE
A303 TYPICAL EXTG CONDITION OF STEEL COMPONENTS TO BE REMEDIATED AND EXISTING GALVANIZED ROOF DECK AND LIGHTING TO BE PROTECTED



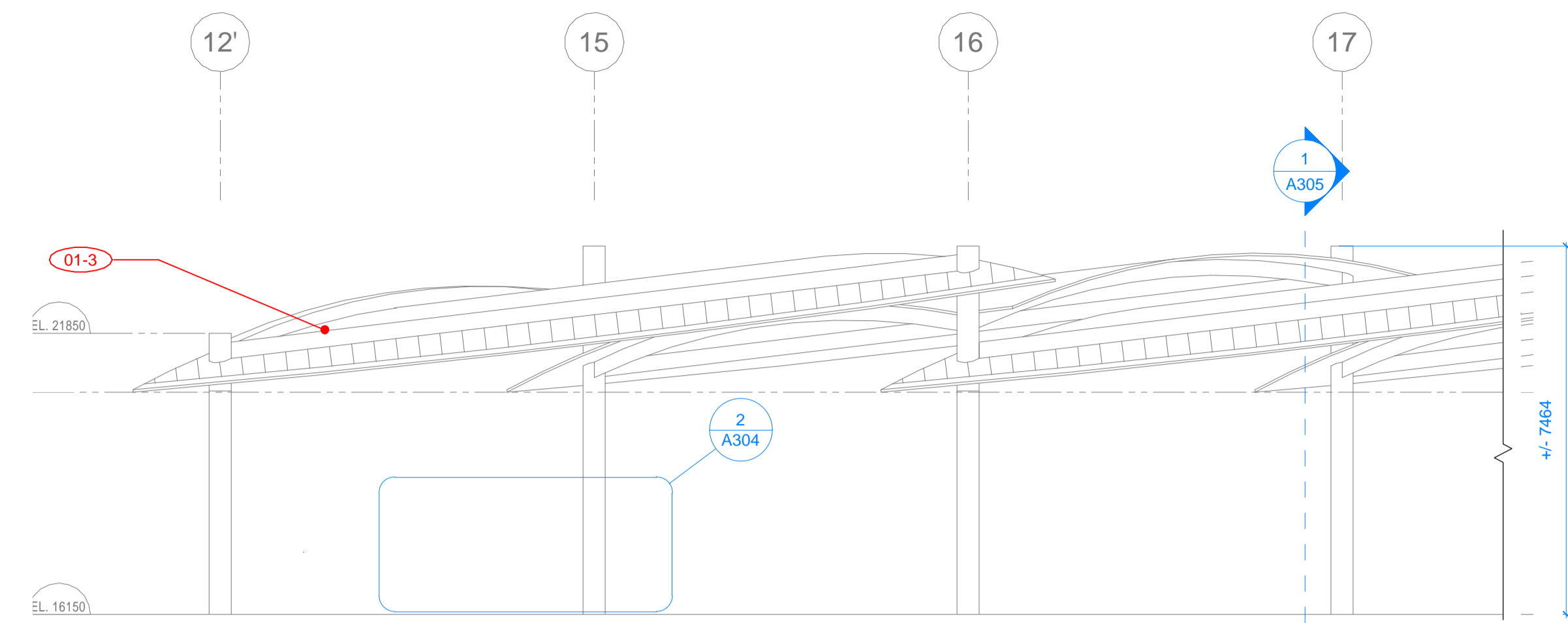
3 SIA OVERLAPPING ROOF INTERFACE
A303 TYPICAL EXTG CONDITION OF STRUCTURAL STEEL, FIRE PROTECTION PIPING, RAIN WATER LEADERS AND GALVANIZED DECK



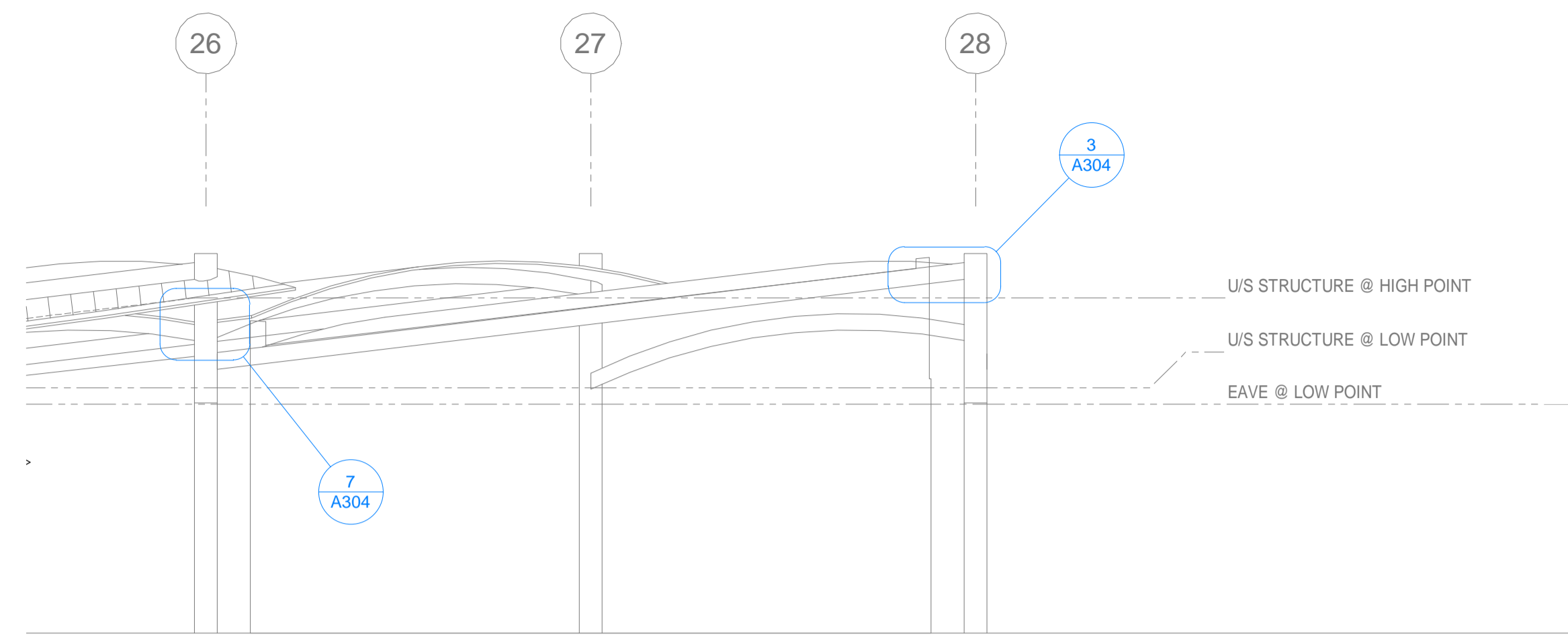
4 TIA BLDG CLERESTORY ROOF
A303 TYPICAL EXTG CONDITION OF STRUCTURAL STEEL AND FIRE PROTECTION PIPING (PROTECT LOWER STRUCTURE/ROOF AND CLERESTORY WINDOWS)



5 TIA CANOPY INTERFACE
A303 TYPICAL EXTG CONDITION OF STRUCTURAL STEEL AND FIRE PROTECTION PIPING AT SIA CANOPY/TIA CANOPY INTERFACE



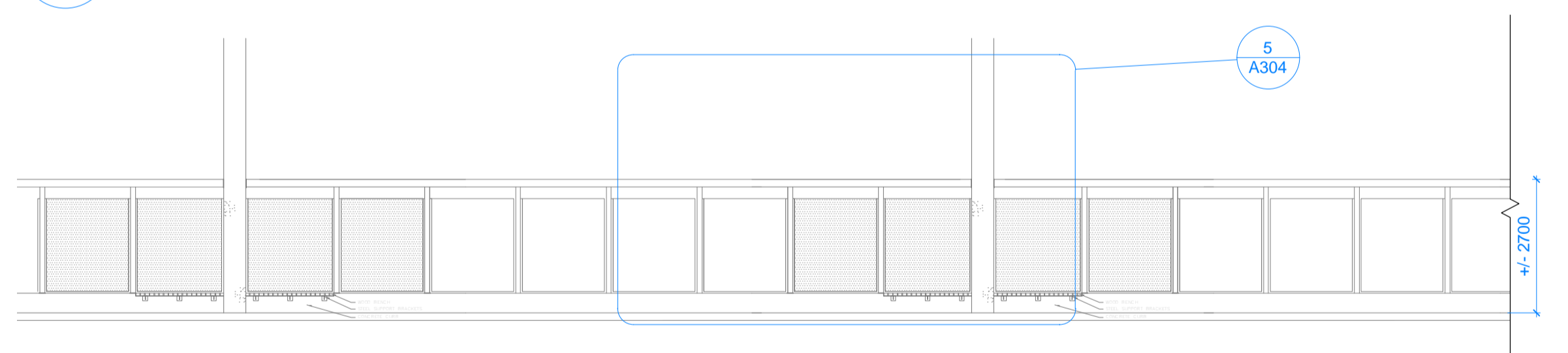
1 SIA CANOPY - EAST ELEVATION
A303 N.T.S.



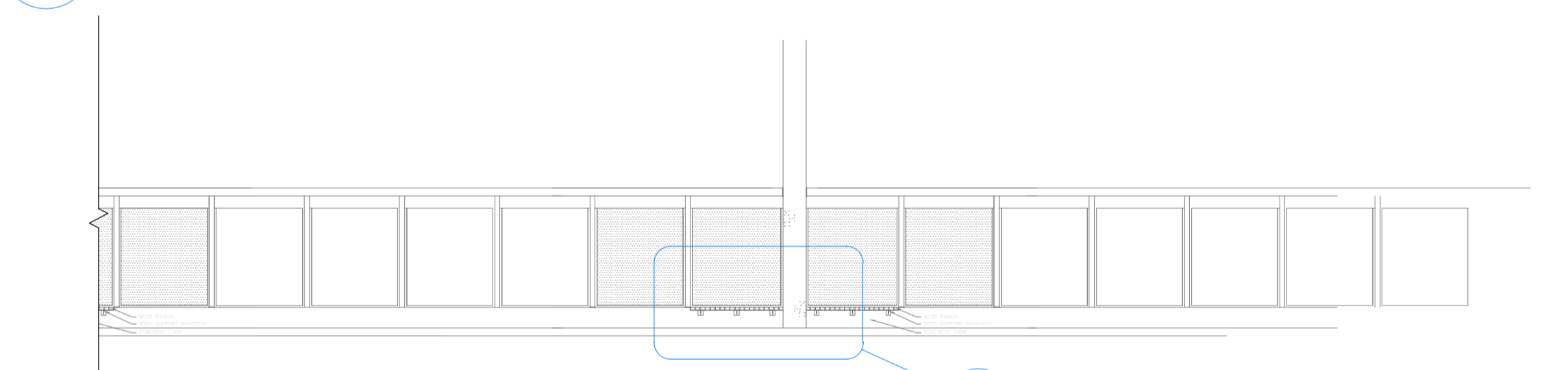
2 SIA CANOPY EAST ELEVATION
A304 TYPICAL EXTG CONDITION OF STEEL CANOPY, FIRE PROTECTION PIPING AND PEDESTRIAN SCREEN



3 SIA CANOPY - TOP OF COLUMN
A304 TYPICAL EXTG CONDITION OF STEEL COLUMN AND MEMBER INTERFACE



4 SIA CANOPY - WEST ELEVATION
A303 N.T.S.



5 SIA PEDESTRIAN SCREEN
A304 TYPICAL EXTG CONDITION OF PEDESTRIAN SCREEN AND BENCH



6 SIA - PEDESTRIAN SCREEN AND BENCH
A304 TYPICAL EXTG CONDITION OF PEDESTRIAN SCREEN AND STEEL BENCH SUPPORTS



7 SIATIA SPRINKLER & RAINWATER LEADER
A304 TYPICAL EXTG CONDITION OF FIRE PROTECTION PIPING

No.	DESCRIPTION
01-3	PIL - ERECT WEATHERTIGHT HOARDING TO WORK AREA TO PROVIDE CONTROLLED ENVIRONMENT FOR REMEDIATION WORK. PROVIDE TEMPORARY PROTECTION OF ALL ELEMENTS NOT BEING REMEDIATED - PIL BOOTHS, ALL CONCRETE & ASPHALT SURFACES & ROOF ELEMENTS, ETC. - REFER TO SPECIFICATIONS
03E-1	PIL & SIATIA: EXISTING CONCRETE COLUMN - PROTECT & COVER DURING REMEDIATION WORK
08E-1	SIATIA: EXISTING PEDESTRIAN HSS STEEL & GLAZING SCREEN - PROTECT GLAZING & ALUMINUM FRAME DURING REMEDIATION WORK OR REMOVE, STORE AND REINSTALL TO ORIGINAL DETAIL. IF ALTERNATIVE OPTION #01, WORK TO INCLUDE TOP RAIL ONLY
09E-1	PIL & SIATIA: CLEAN, PREPARE & RECOAT STEEL SURFACE - REFER TO SPECIFICATIONS (CONTRACTOR TO CONFIRM SPECIFIED OR ALTERNATIVE OPTION #01 METHOD IN BID). CALL FOR THIRD PARTY INSPECTION AFTER COMPLETION OF SURFACE PREPARATION & AFTER EACH COAT
09E-3	SIATIA STEEL BENCH SUPPORT: STEEL - REMOVE, PREPARE, RECOAT AND REINSTALL STEEL FRAME. CALL FOR THIRD PARTY INSPECTION AFTER COMPLETION OF SURFACE PREPARATION AND EACH COAT. WOOD SLATS - REMOVE EXISTING SLATS AND DISPOSE OF OFF-SITE. SUPPLY AND INSTALL NEW PREFINISHED CEDAR WOOD SLATS, THICKNESS, SIZES AND PROFILES TO MATCH EXISTING. STAIN FOLLOWED WITH TWO COATS OF POLYURETHANE ON ALL FACES. INSTALL SLATS TO EXISTING FRAME WITH NEW GALVANIZED METAL FASTENERS. REFER TO SPECIFICATIONS.
EFE-1	PIL & SIATIA: EXISTING LIGHT FIXTURES - TEMPORARILY REMOVE, STORE, REINSTALL & RECONNECT AFTER REMEDIATION WORK COMPLETE. PROVIDE TEMPORARY LIGHTING AS REQUIRED TO COMPLETE WORK - REFER TO SPECIFICATIONS
MFE-1	PIL & SIATIA: EXISTING RAINWATER LEADERS - PROTECT OR TEMPORARILY REMOVE & STORE. PROVIDE TEMPORARY DRAINAGE IF REMOVED. REINSTALL TO ORIGINAL DETAIL
MSE-1	SIATIA: CLEAN, PREPARE & RECOAT FIRE SUPPRESSION PIPING - REFER TO SPECIFICATIONS. CALL FOR THIRD PARTY INSPECTION AFTER COMPLETION OF SURFACE PREPARATION & AFTER EACH COATING. FIRE SUPPRESSION SYSTEM MUST REMAIN OPERATIONAL DURING REMEDIATION WORK

Revision / Revision	Description / Description	Date / Date
3		
2		
1		
0	ISSUED FOR TENDER	16-06-17

Client / client
CANADA BORDER SERVICES AGENCY

Project title / Titre du projet
**DOUGLAS PORT OF ENTRY
220 Highway 99, Surrey BC
CANOPY STRUCTURE
COATING REMEDIATION**

Consultant Approval Box Only

Designed by / Concept par
AB

Drawn by / Dessiné par
BCAI

BCAI Project Number
21519

PWGSC, Project Manager / Administrateur de Projets TPSGC
JULIAN HO

PWGSC, Regional Manager, Architectural and Engineering Services /
Gestionnaire régionale, Services d'architectural et de génie,TPSGC

Drawing title / Titre du dessin
SIA CANOPY ELEVATIONS

PWGSC Project no. / no. du projet R.080020.001	Sheet / Feuille A304	Revision no. / La Revision no.
--	--------------------------------	---

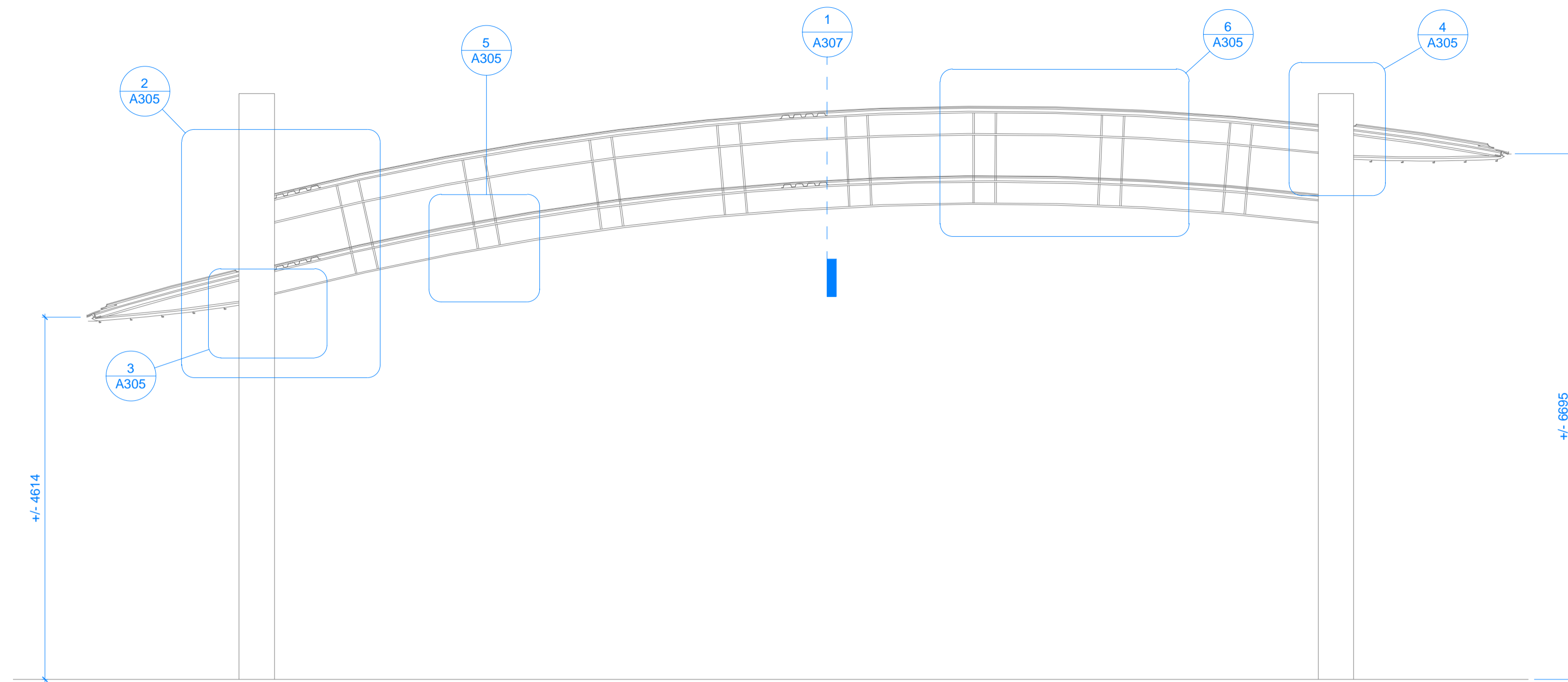
SHOP DRAWINGS:

Prepare and submit to **Boldwing Continuum Architects Inc.** one electronic copy of all required shop drawings with supporting documents and two samples of materials where specified **WITHOUT EXCEPTION**. Shop drawings not reviewed and stamped by Contractor, verifying field measurements and compliance with contract documents will be **REJECTED**. Shop drawings to show construction details of all architectural elements; general arrangements, thicknesses, finishes, location of all services, typical and special installation conditions, material being supplied, and all connections, attachments, anchorages and locations of exposed fastenings as applicable. Shop drawings to incorporate applicable key plan, plans, elevations, sections, and details for all work submitted. No materials to be ordered and no work to be fabricated shall be undertaken until shop drawings and other related submittals been reviewed.

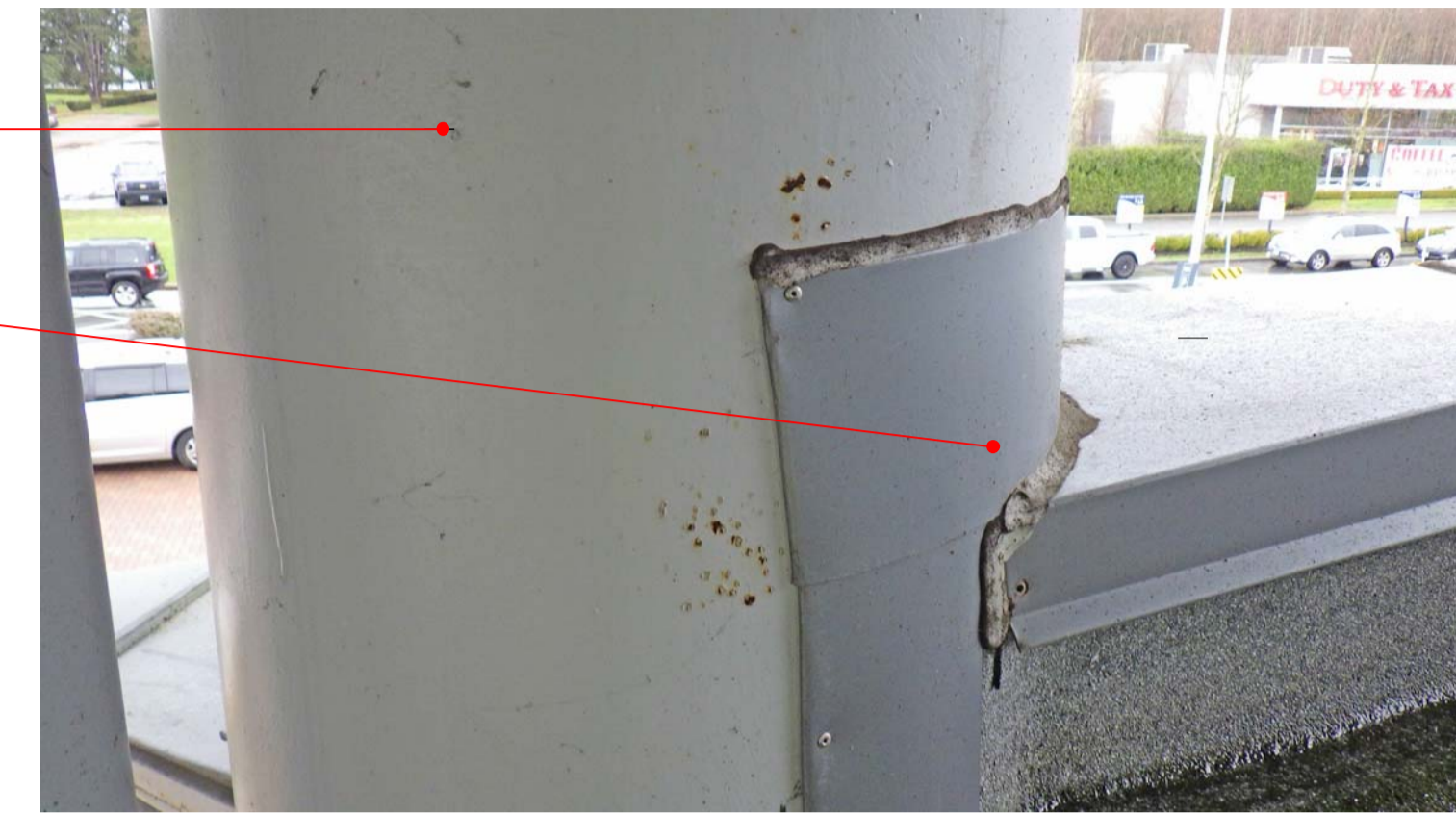
COLOUR PRINTING:

Drawings have been prepared in colour for clarity and must be printed in colour. Consultants and Contractors are responsible for any misinterpretations caused as a result of printing in black and white

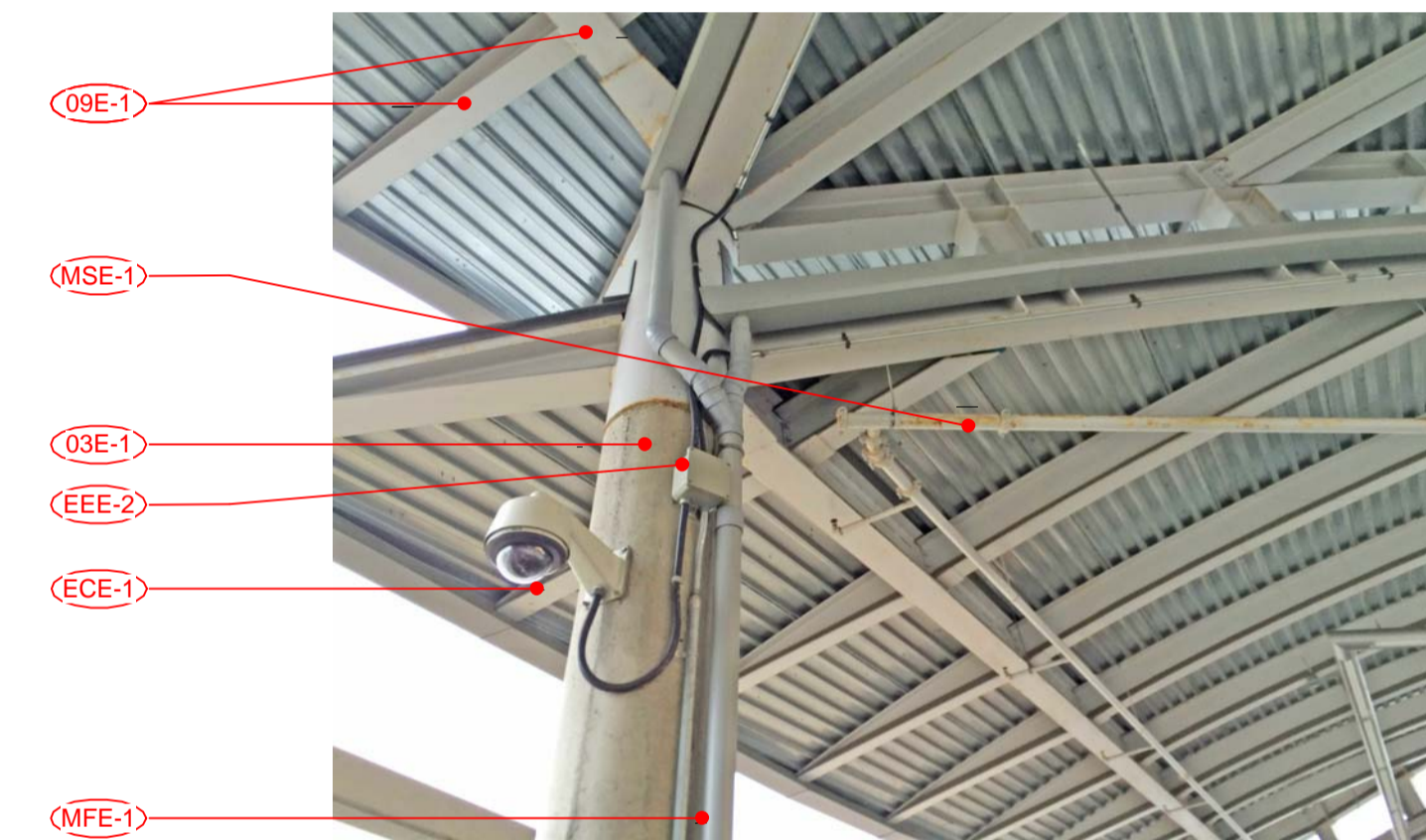




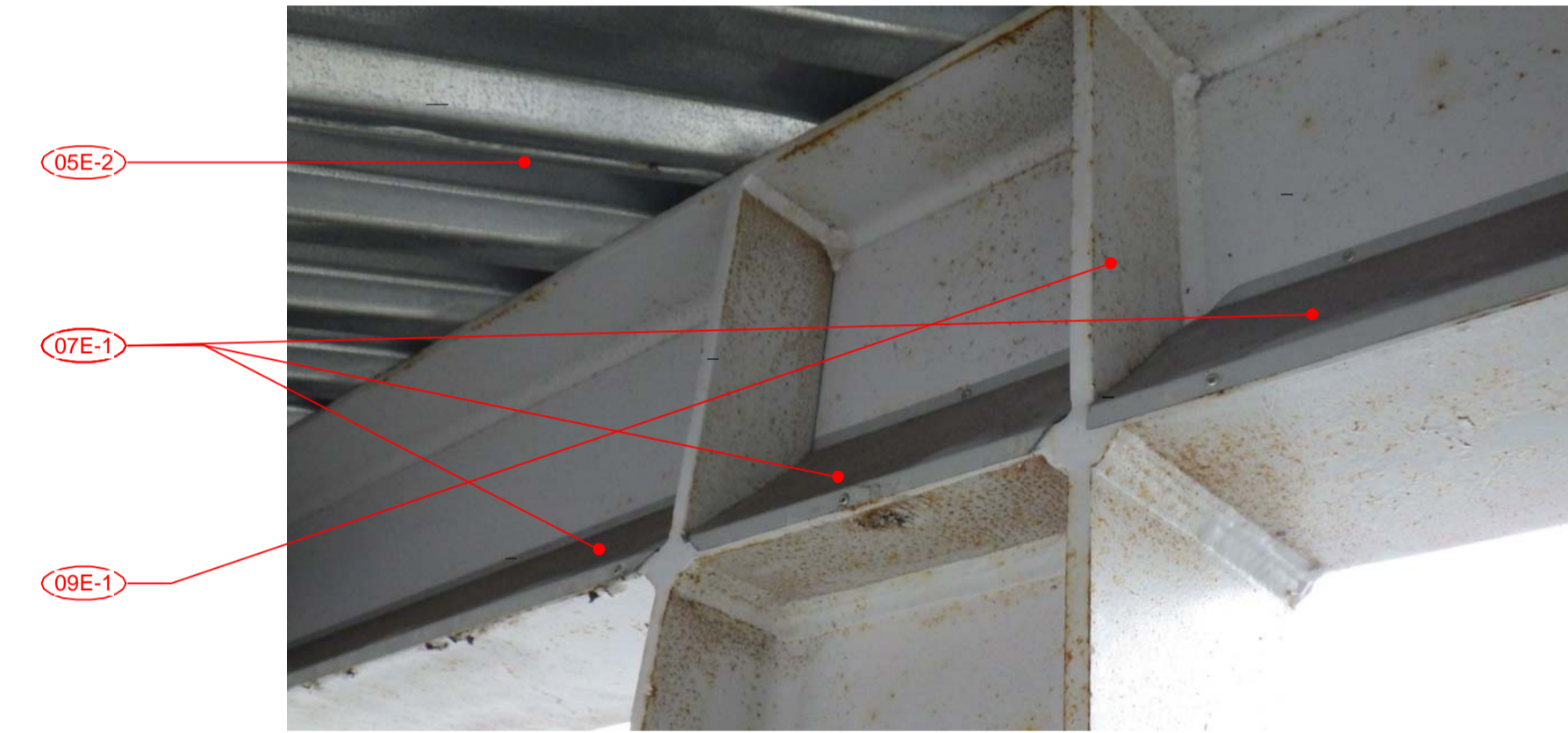
1 SIA CANOPY SECTION
A303 N.T.S.



4 SIA COLUMN ROOF INTERFACE
A305 TYPICAL EXTG CONDITION OF STEEL COLUMN AT ROOF INTERFACE



2 SIA CANOPY FRAMING
A305 TYPICAL EXTG CONDITION OF CONCRETE AND STRUCTURAL STEEL INTERFACE



5 SIA CANOPY STEEL STRUCTURE
A305 TYPICAL EXTG CONDITION OF STEEL WITH BIRD DETERRENT FLASHING



3 SIA CANOPY FIRE PROTECTION
A305 TYPICAL EXTG CONDITION OF FIRE PROTECTION PIPING



6 SIA CANOPY STEEL STRUCTURE & CONNECTIONS
A305 TYPICAL EXTG CONDITION OF STEEL BEAMS, CONNECTIONS, FLASHING AND ROOF MEMBRANE

No.	DESCRIPTION
03E-1	PIL & SIA/TIA: EXISTING CONCRETE COLUMN - PROTECT & COVER DURING REMEDIATION WORK
05E-2	SIA/TIA: EXISTING GALVANIZED METAL ROOF DECK - PROTECT DECK DURING REMEDIATION WORK
07E-1	SIA/TIA: EXISTING PREFINISHED METAL FLASHING, TEMPORARILY DISCONNECT & PROTECT OR REMOVE & STORE AS REQUIRED TO COMPLETE REMEDIATION WORK. REMOVE EXISTING SEALANTS. RECONNECT OR REINSTALL FLASHING & APPLY NEW SEALANT
07E-2	TIA: PROTECT EXISTING ROOF, CLERESTORY GLAZING & BUILDING ENVELOPE DURING REMEDIATION WORK
07E-3	SIA: PROTECT EXISTING ROOF & BUILDING ENVELOPE DURING REMEDIATION WORK
09E-1	PIL & SIA/TIA: CLEAN, PREPARE & RECOAT STEEL SURFACE - REFER TO SPECIFICATIONS (CONTRACTOR TO CONFIRM SPECIFIED OR ALTERNATIVE OPTION #01 METHOD IN BID). CALL FOR THIRD PARTY INSPECTION AFTER COMPLETION OF SURFACE PREPARATION & AFTER EACH COAT
ECE-1	PIL & SIA/TIA: EXISTING SECURITY CAMERAS - COORDINATE PROTECTION WITH CBSA FACILITY PERSONNEL
EEE-2	PIL & SIA/TIA: EXISTING ELECTRICAL CONDUIT: TEMPORARILY UNFASTEN DURING REMEDIATION WORK TO PERMIT REMEDIATION OF STEEL MEMBER AND GLULAM BEAM. TEMPORARILY SUPPORT CONDUIT AS REQUIRED & REFASTEN WITH NEW GALVANIZED FASTENERS
MFE-1	PIL & SIA/TIA: EXISTING RAINWATER LEADERS - PROTECT OR TEMPORARILY REMOVE & STORE. PROVIDE TEMPORARY DRAINAGE IF REMOVED. REINSTALL TO ORIGINAL DETAIL
MSE-1	SIA/TIA: CLEAN, PREPARE & RECOAT FIRE SUPPRESSION PIPING - REFER TO SPECIFICATIONS. CALL FOR THIRD PARTY INSPECTION AFTER COMPLETION OF SURFACE PREPARATION & AFTER EACH COATING. FIRE SUPPRESSION SYSTEM MUST REMAIN OPERATIONAL DURING REMEDIATION WORK

Revision / Revision	Description / Description	Date / Date
3		
2		
1		
0	ISSUED FOR TENDER	16-06-17

Client / client
CANADA BORDER SERVICES AGENCY

Project title / Titre du projet
**DOUGLAS PORT OF ENTRY
220 Highway 99, Surrey BC
CANOPY STRUCTURE
COATING REMEDIATION**

Consultant Approval Box Only

Designed by / Concept par
AB

Drawn by / Dessiné par
BCAI

PWGSC, Project Manager / Administrateur de Projets TPSGC
JULIAN HO

PWGSC, Regional Manager, Architectural and Engineering Services /
Gestionnaire régionale, Services d'architectural et de génie,TPSGC

Drawing title / Titre du dessin
SIA CANOPY SECTIONS

PWGSC Project no. / no. du projet
R.080020.001

Sheet / Feuille
A305

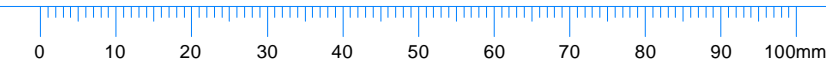
Revision no. /
La
Revision
no.
1

SHOP DRAWINGS:

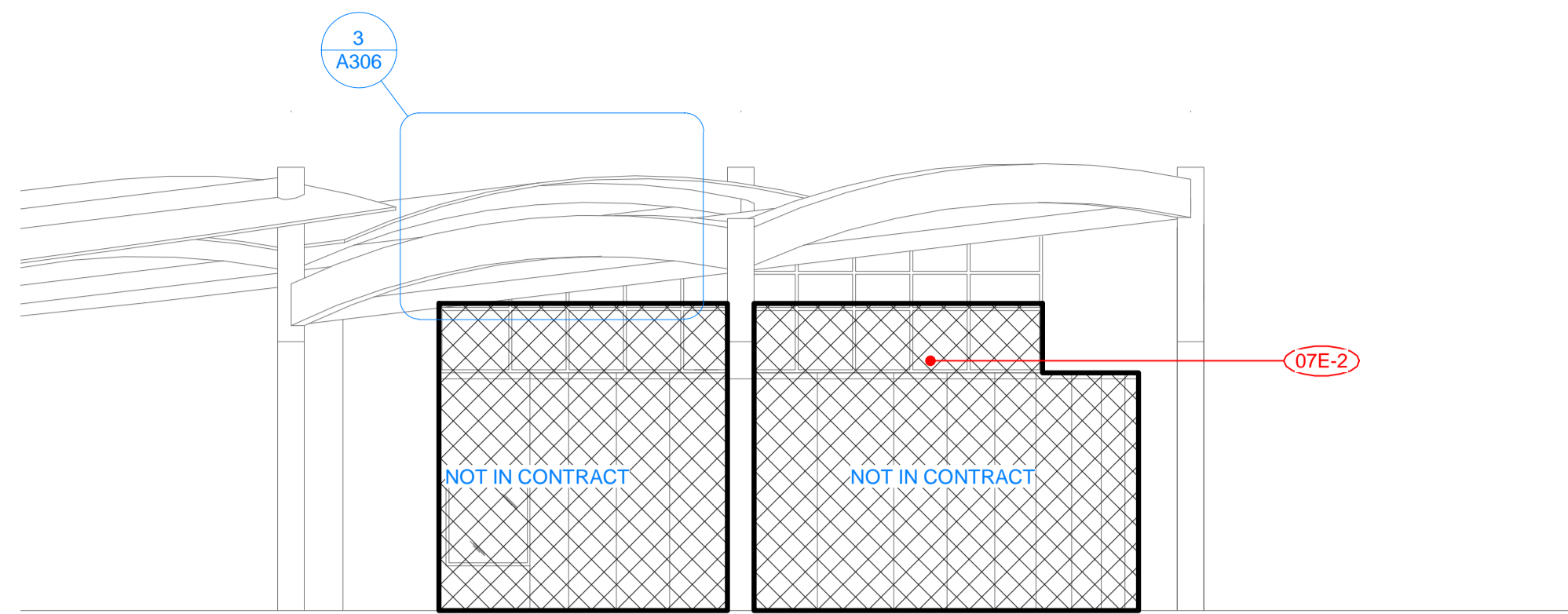
Prepare and submit to *Bolding Continuum Architects Inc.* one electronic copy of all required shop drawings with supporting documents and two samples of materials where specified WITHOUT EXCEPTION. Shop drawings not reviewed and stamped by Contractor, verifying field measurements and compliance with contract documents will be REJECTED. Shop drawings to show construction details of all architectural elements; general arrangements, thicknesses, finishes, location of all services, typical and special installation conditions, material being supplied, and all connections, attachments, anchorages and locations of exposed fastenings as applicable. Shop drawings to incorporate applicable key plan, plans, elevations, sections, and details for all work submitted. No materials to be ordered and no work to be fabricated shall be undertaken until shop drawings and other related submittals been reviewed.

COLOUR PRINTING:

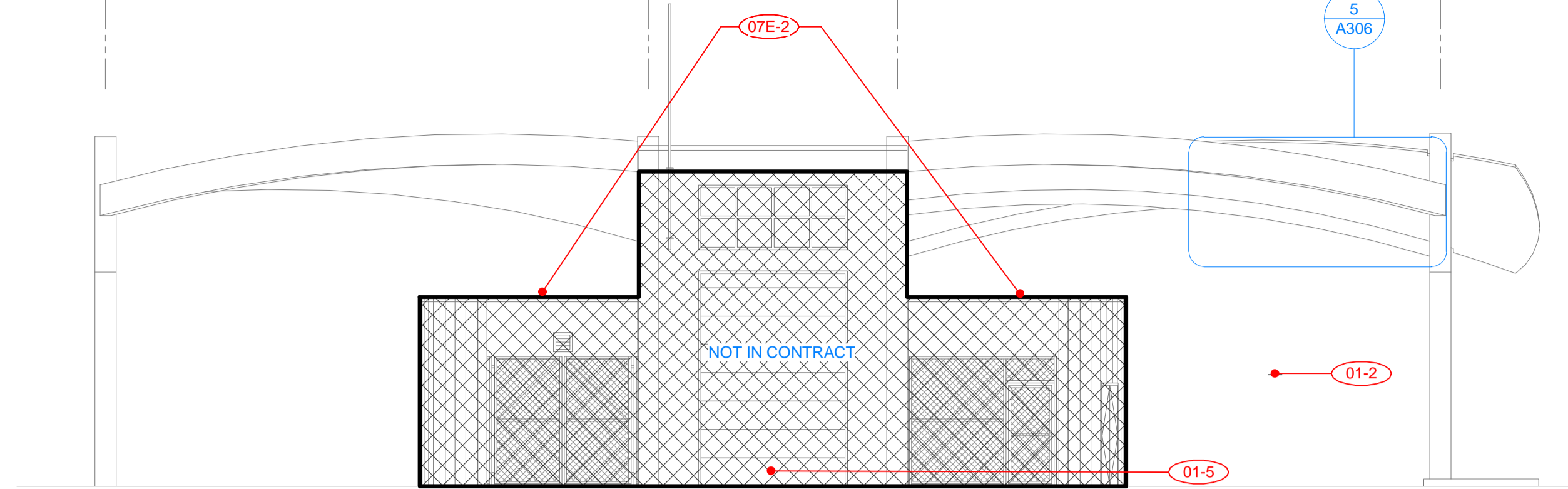
Drawings have been prepared in colour for clarity and must be printed in colour. Consultants and Contractors are responsible for any misinterpretations caused as a result of printing in black and white



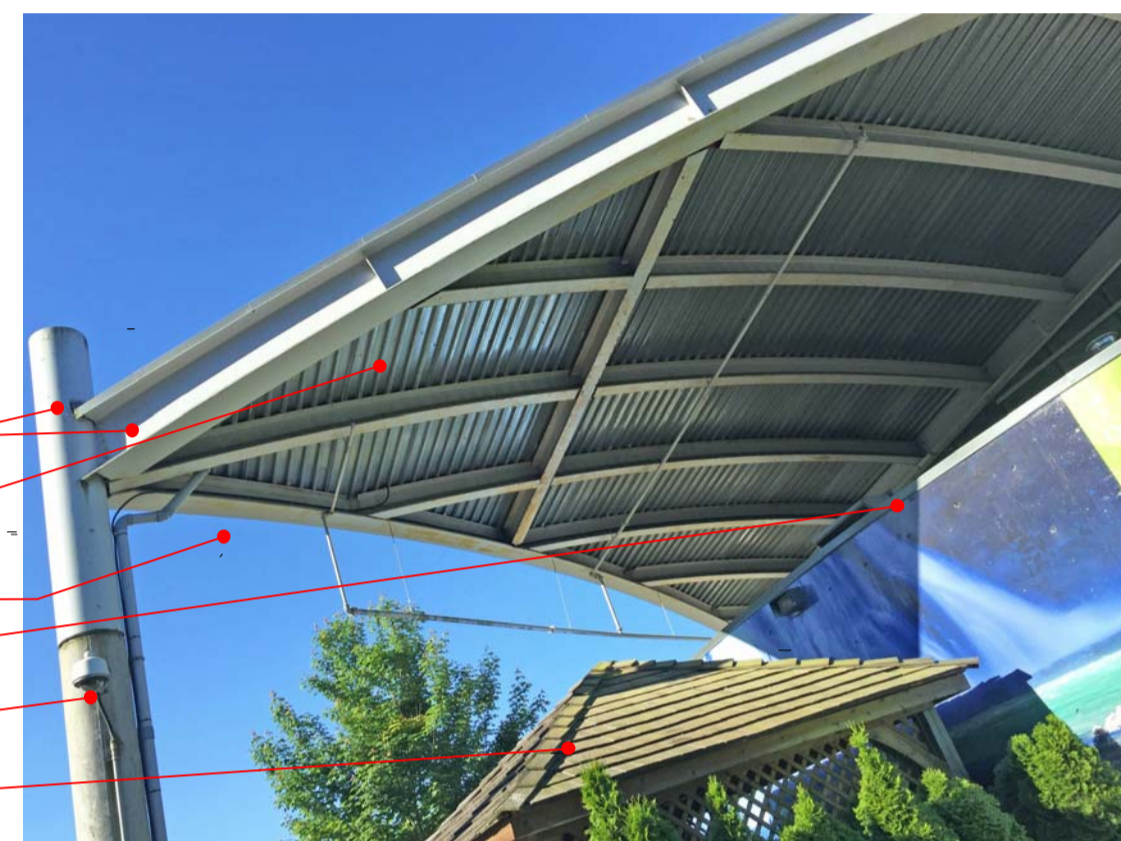
No.	DESCRIPTION
01-2	CONTRACTOR TO TEMPORARILY REMOVE AND STORE EXISTING EQUIPMENT ON SITE AS DIRECTED. EQUIPMENT TO BE RESTORED AFTER REMEDIATION
01-5	TIA: MAINTAIN ACCESS TO TIA BUILDING ENTRANCES, EXITS & OVERHEAD DOORS AT ALL TIMES
03E-1	PIL & SIA/TIA: EXISTING CONCRETE COLUMN - PROTECT & COVER DURING REMEDIATION WORK
05E-2	SIA/TIA: EXISTING GALVANIZED METAL ROOF DECK - PROTECT DECK DURING REMEDIATION WORK
07E-1	SIA/TIA: EXISTING PREFINISHED METAL FLASHING, TEMPORARILY DISCONNECT & PROTECT OR REMOVE & STORE AS REQUIRED TO COMPLETE REMEDIATION WORK. REMOVE EXISTING SEALANTS, RECONNECT OR REINSTALL FLASHING & APPLY NEW SEALANT
07E-2	TIA: PROTECT EXISTING ROOF, CLERESTORY GLAZING & BUILDING ENVELOPE DURING REMEDIATION WORK
08E-1	SIA: EXISTING PEDESTRIAN HSS STEEL & ALUMINUM FRAME DURING REMEDIATION WORK OR REMOVE, STORE AND REINSTALL TO ORIGINAL DETAIL. IF ALTERNATIVE OPTION #01, WORK TO INCLUDE TOP RAIL ONLY
09E-1	PIL & SIA/TIA: CLEAN, PREPARE & RECOAT STEEL SURFACE - REFER TO SPECIFICATIONS (CONTRACTOR TO CONFIRM SPECIFIED OR ALTERNATIVE OPTION #01 METHOD IN BID). CALL FOR THIRD PARTY INSPECTION AFTER COMPLETION OF SURFACE PREPARATION & AFTER EACH COAT
ECE-1	PIL & SIA/TIA: EXISTING SECURITY CAMERAS - COORDINATE PROTECTION WITH CBSA FACILITY PERSONNEL
EFE-1	PIL & SIA/TIA: EXISTING LIGHT FIXTURES - TEMPORARILY REMOVE, STORE, REINSTALL & RECONNECT AFTER REMEDIATION WORK COMPLETE. PROVIDE TEMPORARY LIGHTING AS REQUIRED TO COMPLETE WORK - REFER TO SPECIFICATIONS
EFE-2	PIL: EXISTING DIGITAL SIGNAGE - AS PHASED WORK PROGRESSES, PATTISON SIGN GROUP (RETAINED BY CONTRACTOR) TO TEMPORARILY REMOVE SIGN PANELS AND ASSOCIATED COMPONENTS, STORE, REINSTALL & RECONNECT AFTER REMEDIATION WORK COMPLETE. CONTRACTOR TO PROVIDE TEMPORARY CONES AND/OR BARRICADES TO DIRECT TRAFFIC TOWARDS OPEN LANES. COORDINATE WITH CBSA FACILITY PERSONNEL
MFE-1	PIL & SIA/TIA: EXISTING RAINWATER LEADERS - PROTECT OR TEMPORARILY REMOVE & STORE. PROVIDE TEMPORARY DRAINAGE IF REMOVED. REINSTALL TO ORIGINAL DETAIL
MSE-1	SIA/TIA: CLEAN, PREPARE & RECOAT FIRE SUPPRESSION PIPING - REFER TO SPECIFICATIONS. CALL FOR THIRD PARTY INSPECTION AFTER COMPLETION OF SURFACE PREPARATION & AFTER EACH COATING. FIRE SUPPRESSION SYSTEM MUST REMAIN OPERATIONAL DURING REMEDIATION WORK



1 TIA CANOPY - EAST ELEVATION
A303 N.T.S.



2 TIA CANOPY - NORTH ELEVATION
A303 N.T.S.



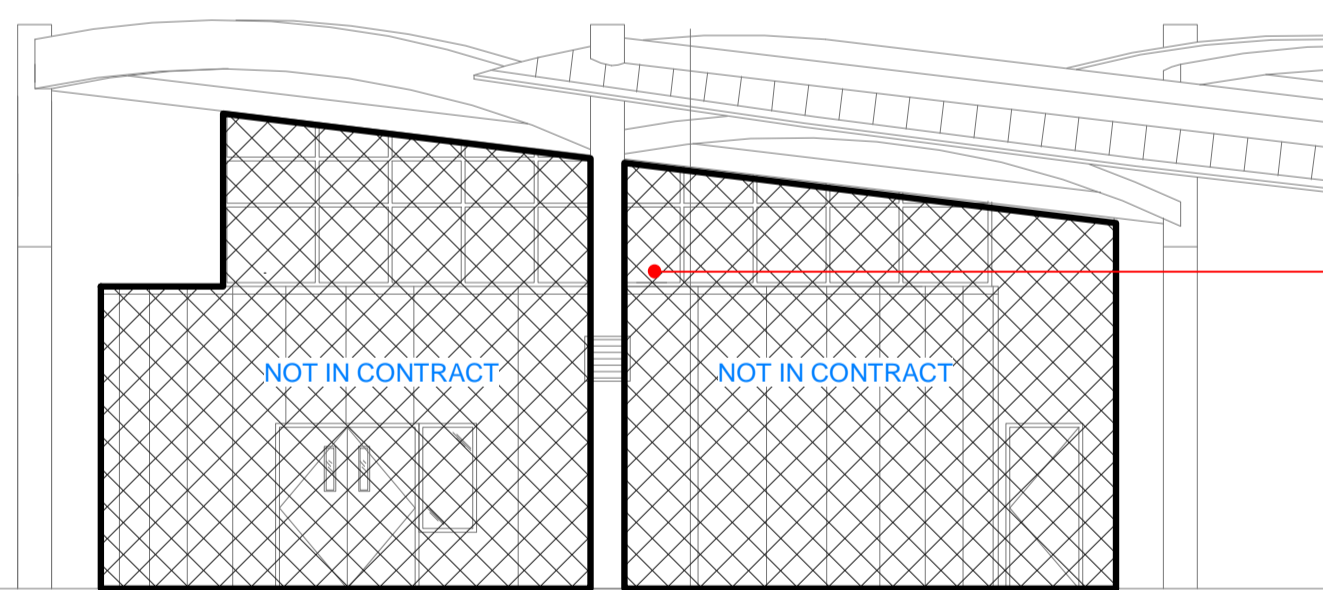
3 TIA - EAST ELEVATION
A306 TYPICAL EXTG CONDITION OF STRUCTURAL STEEL CANOPY



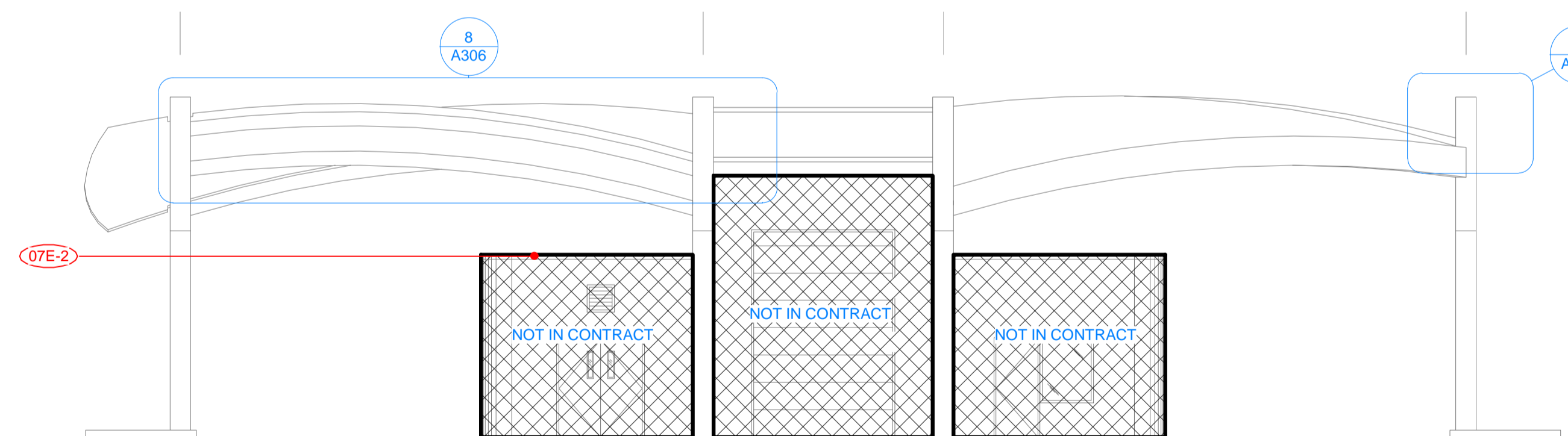
4 TIA - SOUTH ELEVATION
A306 TYPICAL EXTG CONDITION OF TERTIARY INSPECTION BUILDING WITH LOWER ROOF AND CLERESTORY GLAZING



5 TIA - NORTH ELEVATION
A306 TYPICAL EXTG CONDITION OF TIA CANOPY



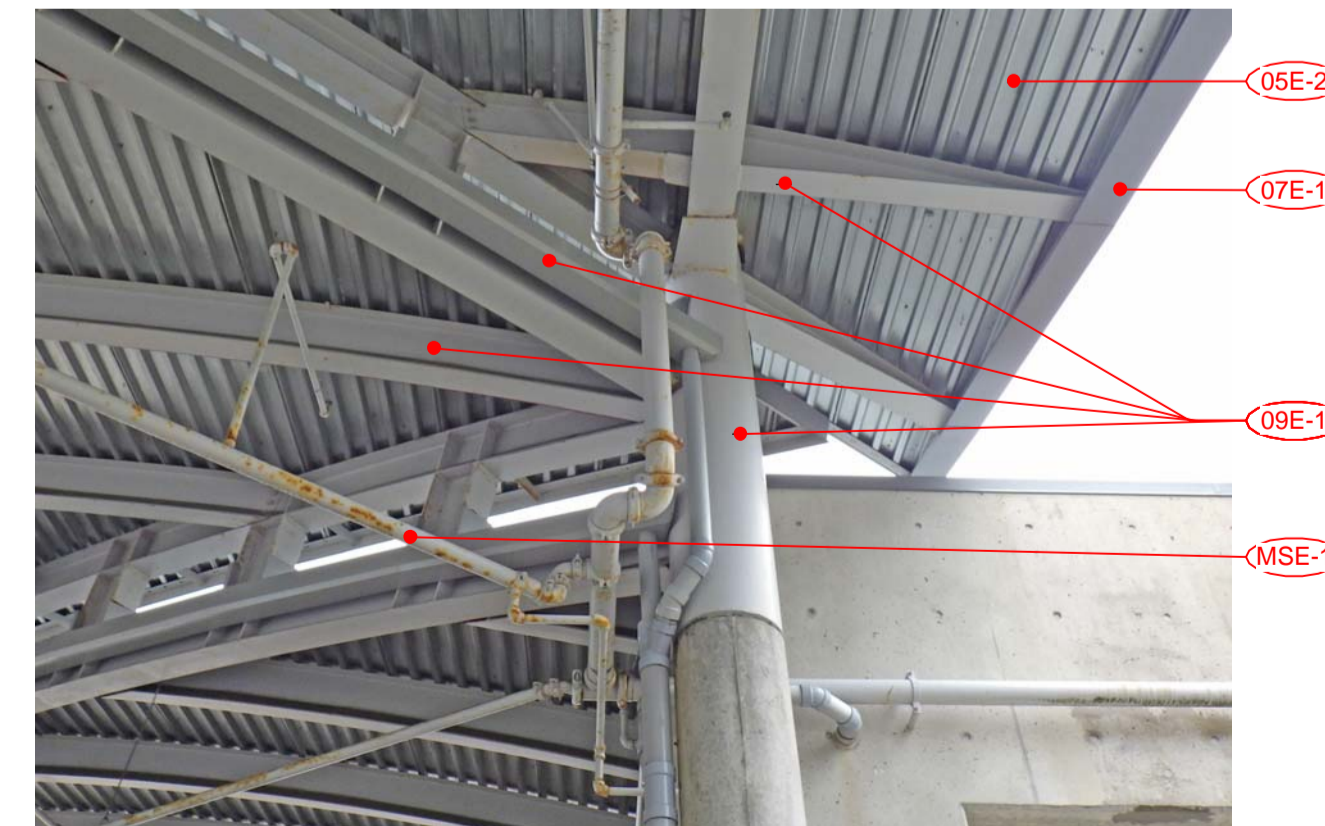
6 TIA CANOPY - WEST ELEVATION
A303 N.T.S.



7 TIA CANOPY - SOUTH ELEVATION
A303 N.T.S.



8 TIA - SOUTH ELEVATION
A306 TYPICAL EXTG CONDITION OF STRUCTURAL STEEL AND PEDESTRIAN SCREEN



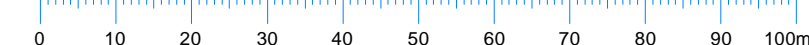
TYPICAL EXTG CONDITION OF STRUCTURAL STEEL AND FIRE PROTECTION PIPING

**SHOP
DRAWINGS:**

Prepare and submit to *Boldwing Continuum Architects Inc.* one electronic copy of all required shop drawings with supporting documents and two samples of materials where specified WITHOUT EXCEPTION. Shop drawings not reviewed and stamped by Contractor, verifying field measurements and compliance with contract documents will be REJECTED. Shop drawings to show construction details of all architectural elements; general arrangements, thicknesses, finishes, location of all services, typical and special installation conditions, material being supplied, and all connections, attachments, anchorages and locations of exposed fastenings as applicable. Shop drawings to incorporate applicable key plan, plans, elevations, sections, and details for all work submitted. No materials to be ordered and no work to be fabricated shall be undertaken until shop drawings and other related submittals been reviewed.

**COLOUR
PRINTING:**

Drawings have been prepared in colour for clarity and must be printed in colour. Consultants and Contractors are responsible for any misinterpretations caused as a result of printing in black and white



3		
2		
1		
0	ISSUED FOR TENDER	16-06-17
Revision / Revision	Description / Description	Date / Date

Client / client
**CANADA BORDER SERVICES
AGENCY**

Project title / Titre du projet
**DOUGLAS PORT OF ENTRY
220 Highway 99, Surrey BC
CANOPY STRUCTURE
COATING REMEDIATION**

Consultant Approval Box Only

Designed by / Concept par
AB

Drawn by / Dessiné par
BCAI Project Number
21519

PWGSC, Project Manager / Administrateur de Projets TPSGC
JULIAN HO

PWGSC, Regional Manager, Architectural and Engineering Services /
Gestionnaire régionale, Services d'architectural et de génie,TPSGC

Drawing title / Titre du dessin
TIA CANOPY ELEVATIONS

PWGSC Project no. / no. du Projet
R.080020.001

Sheet / Feuille
A306

Revision no. /
La
Revision
no.

