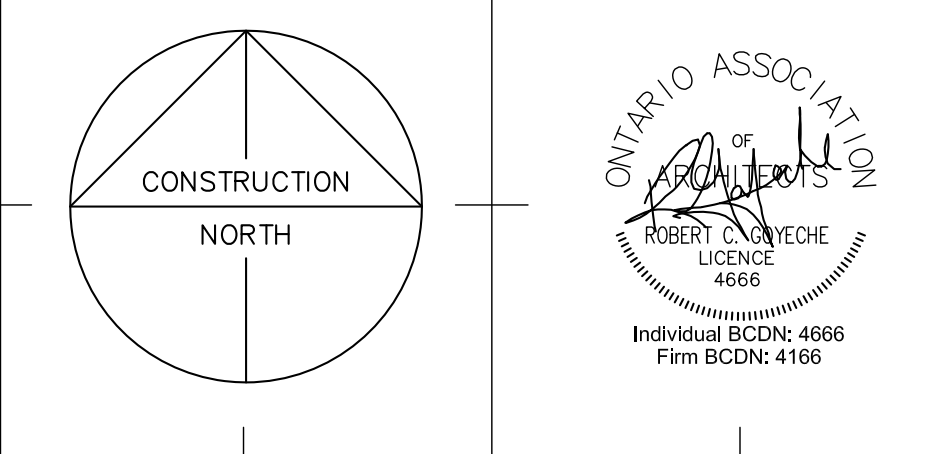
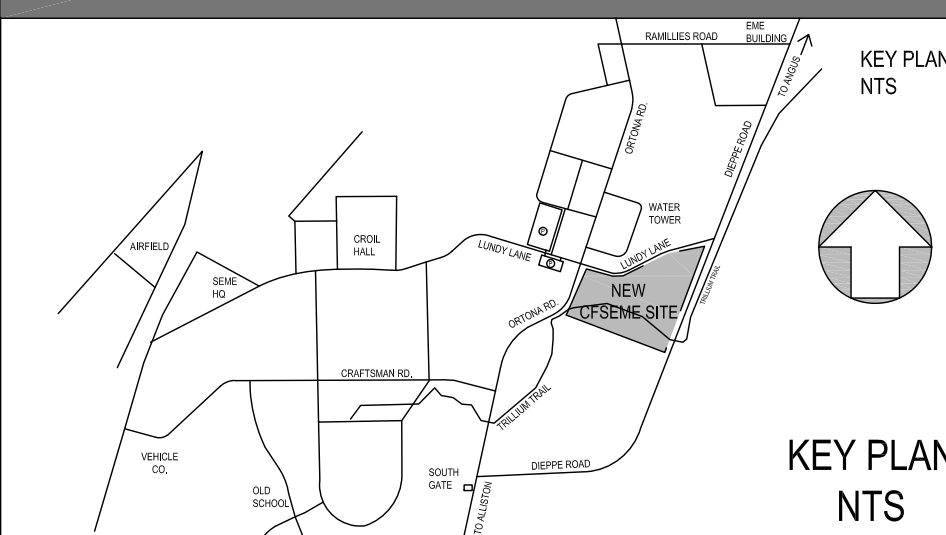


UNCLAS

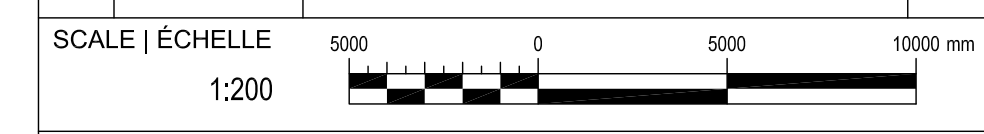
This drawing is an instrument of service and is protected by copyright, copyright for the consultant's instrument of service belongs to the consultant. Copies including electronic copies, may only be used for the purpose intended and for a one-time use, on the same site, and for the same project and may not be offered for sale or transfer without the express written consent of the consultant.

rdh
rounthwaite dick and hadley architects inc.



LEGEND
 - - - - - N.I.C. EQUIPMENT / FURNITURE
 - - - - - STEEL BRACING (RE: STRUCTURAL)
 - - - - - EXPANSION JOINT
 P WALL TYPE SUFFIX 'y' DENOTES A PART-HEIGHT WALL

NO.	DATE	REVISION	APPR.
8	2013/06/21	ISSUED FOR TENDER	DH
7	2013/03/22	ISSUED FOR TENDER	DH
6	2012/10/26	ISSUED FOR 100%	DH
5	2012/06/28	ISSUED FOR 100% REVIEW	DH
4	2012/03/08	ISSUED FOR 99% REVIEW	DH
3	2012/03/08	ISSUED FOR 86% REVIEW	DH
2	2012/01/26	ISSUED FOR 33% REVIEW	DH
1	2011/11/25	ISSUED FOR DESIGN DEVELOPMENT	DH
#	2011/09/16	ISSUED FOR FINAL CONCEPT	DH



LOCATION | EMPLACEMENT
**LUNDY LANE
 CFB BORDEN
 ONTARIO**

PROJECT | PROJET
**CANADIAN FORCES SCHOOL OF
 ELECTRICAL AND MECHANICAL
 ENGINEERING CONSOLIDATION**

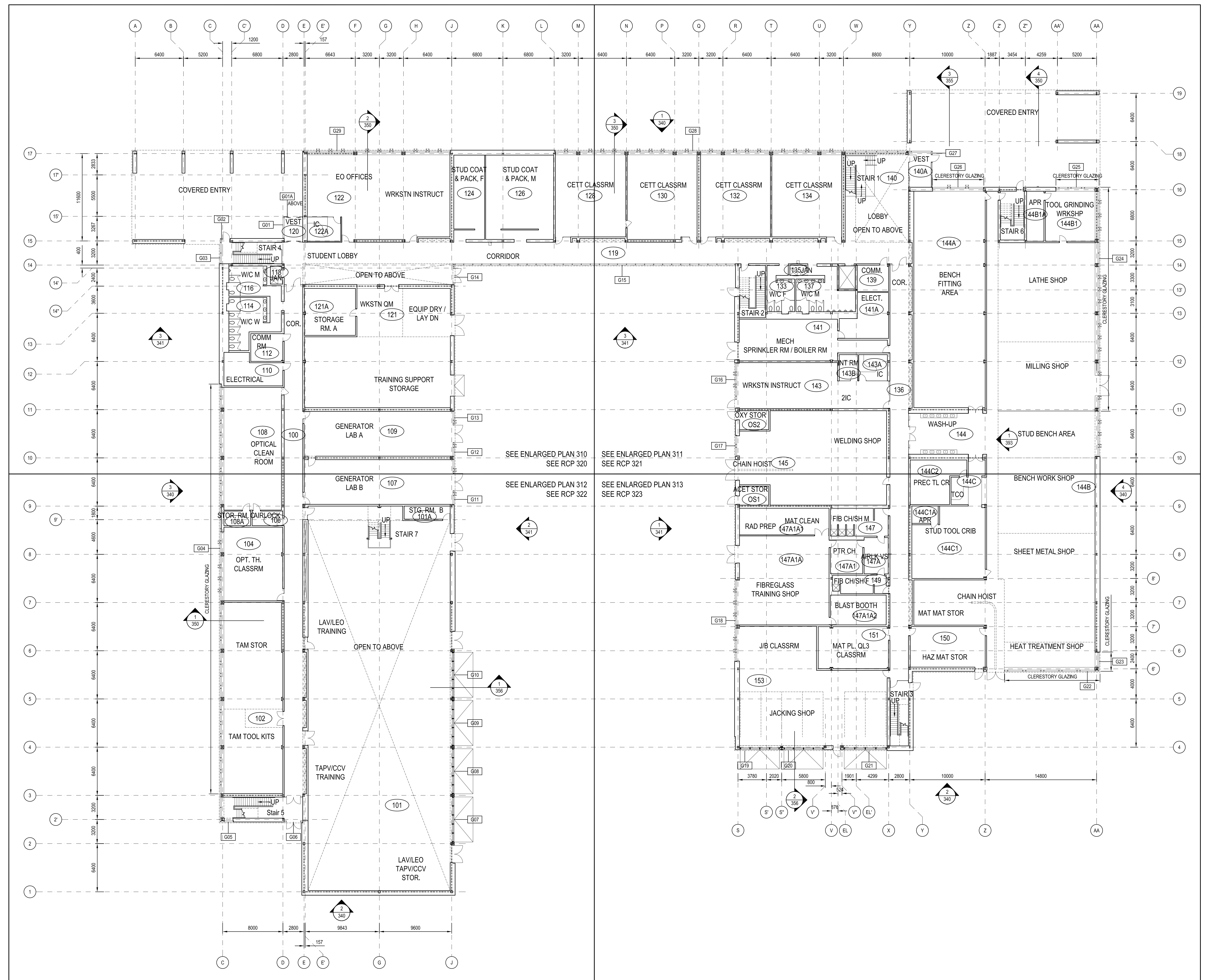
TRADE | MÉTIER
ARCHITECTURE DATE
2013.03.22

SUBJECT | SUJET
100 LEVEL FLOOR PLAN

PRODUCTION	DESIGNED ÉTUDE	REVIEWED REVU	DES O AGENT CONC
GM	XX XX		X.X.
EB			PROJ MGR GEST PROJ
BG			DES MGR GEST CONC
DH			X.X.
			FIRE INCENDIE
			X.X.

PF NUMBER | No DP
HQ 1424 AA

DWG. NO. | No. DESSIN
H-B147-88135/01-301



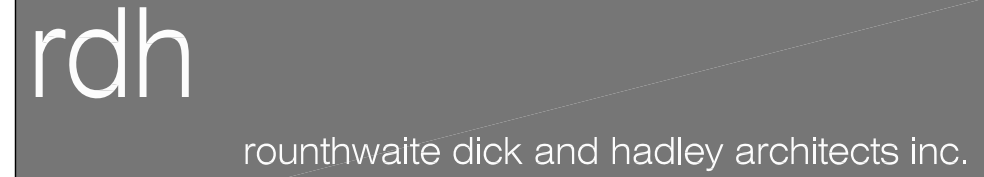
1 100 LEVEL FLOOR PLAN
 scale 1:200

2013 Jun 21, 12:09pm dhanjivac L:\Active Projects\201102 - CFB Borden CFSEMED Drawings\02 Current Drawings\Design Presentation Drawings\H-B147-88135-01-301 Floor Plan 100 Level (RDH) Lineweights.dwg

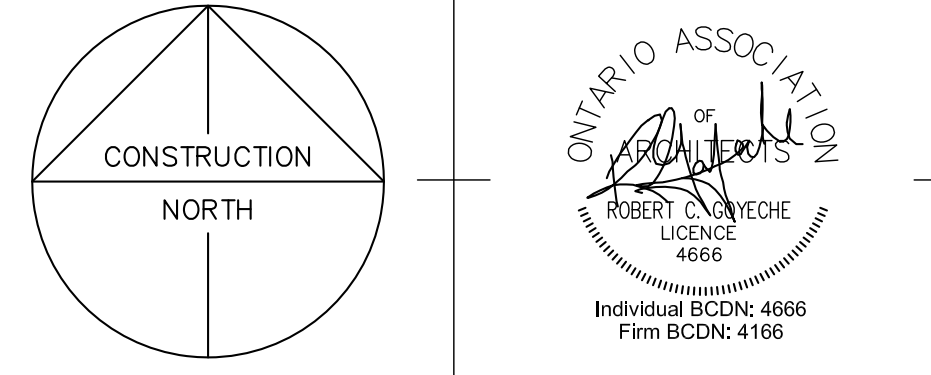
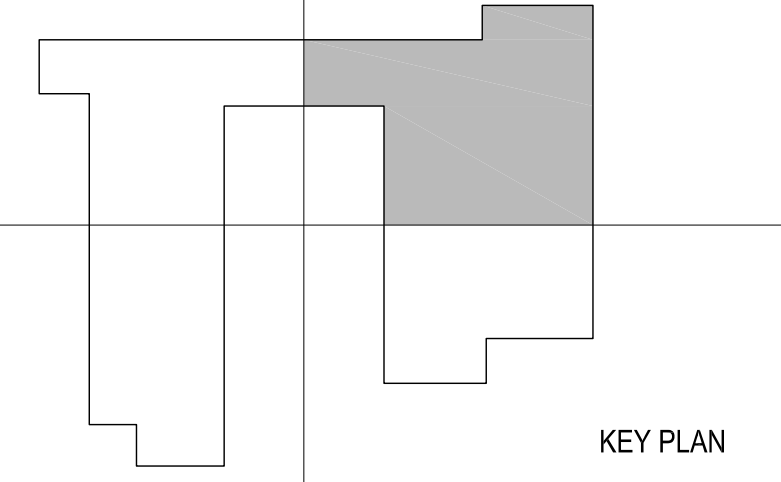
UNCLAS

This drawing is an instrument of service and is protected by copyright, copyright for the consultant's instrument of service belongs to the consultant. Copies including electronic copies, may only be used for the purpose intended and for a one-time use, on the same site, and for the same project and may not be offered for sale or transfer without the express written consent of the consultant.

Le présent dessin est un instrument de service protégé par le droit d'auteur. Le droit d'auteur sur l'instrument de service appartient à ce dernier. Les exemplaires de ce dessin, y compris les exemplaires électroniques, ne peuvent servir qu'à une fois, sur le même chantier, sur le même projet. Ils ne peuvent être offerts en vente ni transférés sans le consentement écrit expresse de l'expert-consultant.



rounthwaite dick and hadley architects inc.



LEGEND

- N.I.C. EQUIPMENT / FURNITURE
- STEEL BRACING (RE: STRUCTURAL)
- EXPANSION JOINT
- P WALL TYPE SUFFIX 'y' DENOTES A PART-HEIGHT WALL

NO.	DATE	REVISION	APPR.
8	2013/08/21	ISSUED FOR TENDER	DH
7	2013/03/22	ISSUED FOR TENDER	DH
6	2012/10/26	ISSUED FOR 100%	DH
5	2012/06/28	ISSUED FOR 100% REVIEW	DH
4	2012/05/08	ISSUED FOR 99% REVIEW	DH
3	2012/03/08	ISSUED FOR 86% REVIEW	DH
2	2012/01/26	ISSUED FOR 33% REVIEW	DH
1	2011/11/25	ISSUED FOR DESIGN DEVELOPMENT	DH
#	2011/08/16	ISSUED FOR FINAL CONCEPT	DH

SCALE | ÉCHELLE

1:100

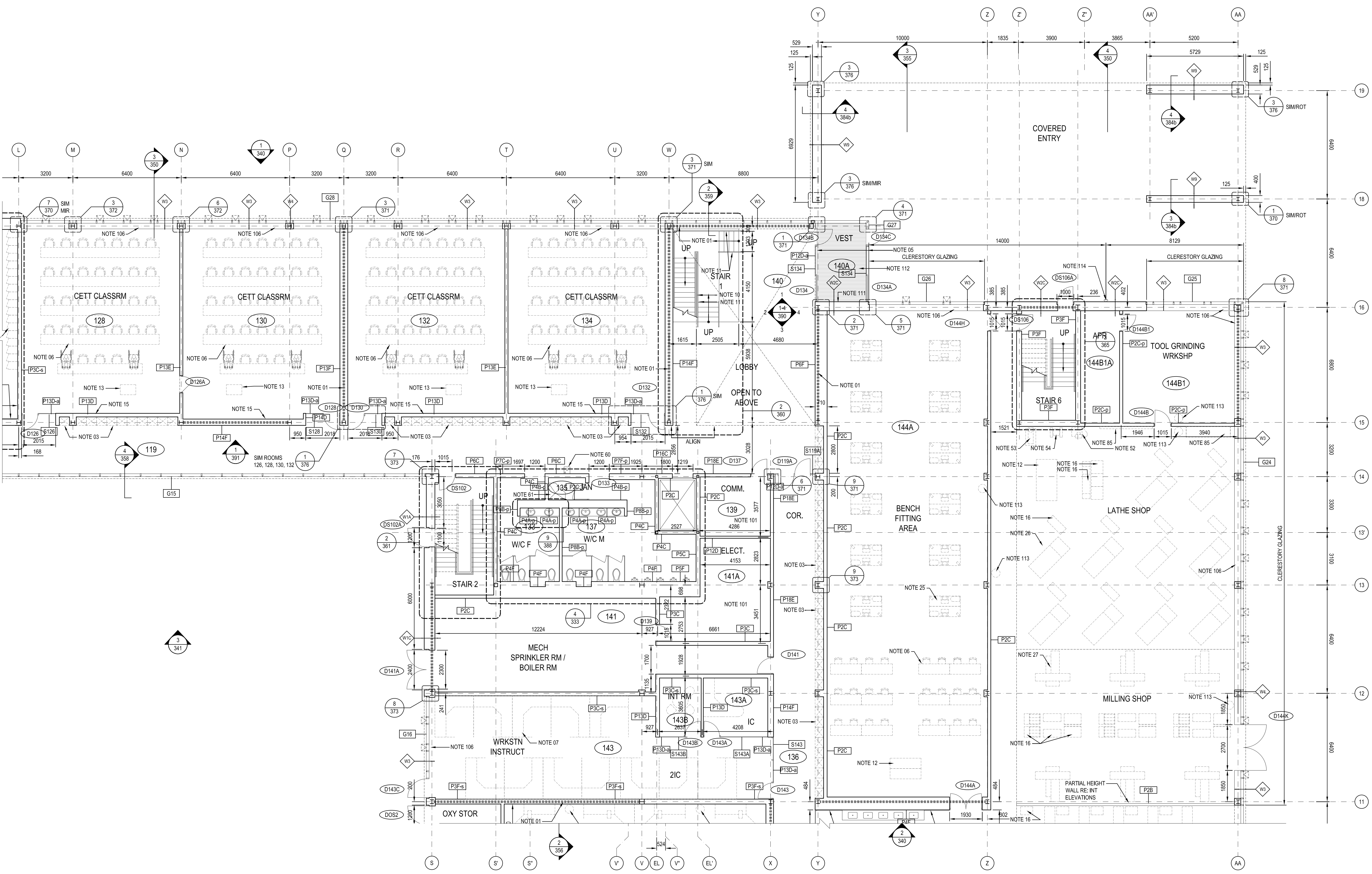
LOCATION | EMPLACEMENT
**LUNDY LANE
 CFB BORDEN
 ONTARIO**

PROJECT | PROJET
**CANADIAN FORCES SCHOOL OF
 ELECTRICAL AND MECHANICAL
 ENGINEERING CONSOLIDATION**

TRADE MÉTIER	DATE
ARCHITECTURE	2013.03.22

**100 LEVEL FLOOR PLAN
 NORTHEAST QUADRANT**

DESIGNED ÉTUDIÉ	REVIEWED REVU	DES O AGENT CONC
GM	XX XX	XX
DRAWN DESSINÉ		PROJ MGR GEST PROJ
EB		NF
CHECKED VÉRIFIÉ		DES MGR GEST CONC
BG		XX
COORDINATION		FIRE INCENDIE
DH		XX
PF NUMBER No DP	DWG. NO. No. DESSIN	
HQ 1424 AA	H-B147-88135/01-311	



1 100 LEVEL FLOOR PLAN - NORTHEAST QUADRANT
 scale 1:100

PLAN NOTES

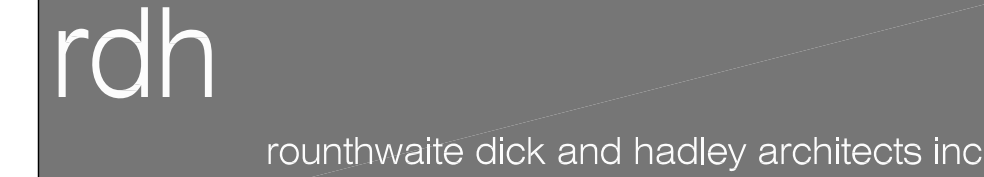
01. STRUCTURAL BRACING	28. PEDESTAL GRINDER (N.I.C.)	56. JACK (N.I.C.)	90. FLUTTER (N.I.C.)
02. PASSIVE VENT SHAFT (ABOVE WHEN DASHED)	29. BAND SAW (N.I.C.)	57. STUDENT WORKSTATION W/ FUME HOOD (N.I.C.)	91. MODEL (N.I.C.)
03. MILLWORK DISPLAY OR STORAGE CABINET (N.I.C.)	30. DRILL PRESS (N.I.C.)	58. SCALE (N.I.C.)	92. TEST STAND (N.I.C.)
04. OVERHEAD DOOR	31. PEDESTAL BUFFER (N.I.C.)	59. TARGET (N.I.C.)	93. BIOSAFETY CABINET (N.I.C.)
05. AUTOMATIC DOOR	32. BELT SANDER (N.I.C.)	60. DRINKING FOUNTAIN W/ CANE DETECTABLE	94. STANDARDS OBSERVATION DESK (N.I.C.)
06. FIXED DESK (N.I.C.)	33. SAND BLASTER (N.I.C.)	61. MOP SINK	95. WORKBENCH W/ VICE GRIPS & DRILL (N.I.C.)
07. WORKSTATION (N.I.C.)	34. SPOT WELDER (N.I.C.)	62. CHANGE ROOM BENCH	96. TOW CONTAINER (N.I.C.)
08. EQUIPMENT PEDestal	35. HYDRAULIC PRESS (N.I.C.)	63. PORTABLE GENERATOR (N.I.C.)	97. FLAMMABLE STORAGE (N.I.C.)
C/W STRUCTURAL ISOLATION	36. METAL NOTCHER AND BENDER (N.I.C.)	64. SPIRAL KIT (N.I.C.)	98. EQUIPMENT TESTING STAND (N.I.C.)
09. LOCKER (N.I.C.)	37. ROTEX PUNCH (N.I.C.)	65. HAZARDOUS MATERIAL BINS (N.I.C.)	99. LATHE AND PRESS (N.I.C.)
10. GLASS GUARD	38. METAL HORN GRIND AND BEND (N.I.C.)	66. TRANSFORMER (N.I.C.)	100. CLASSROOM TESTING STAND (N.I.C.)
11. STAINLESS STEEL HANGRALL	39. METAL BAR FOLDER (N.I.C.)	67. BOOSTER CHAIRS (N.I.C.)	101. 13mm PLYWOOD WITH TWO COATS OF FIRE
12. WORKBENCH (N.I.C.)	40. FORMING MACHINE (N.I.C.)	68. POWER WASHER (N.I.C.)	RETARDANT PAINT TO 2440 ON ALL WALLS.
13. LECTERN (N.I.C.)	41. METAL HORN GRIND AND BEND (N.I.C.)	69. TOOL WASH STATION (N.I.C.)	ALL JOINTS AND SCREW/HAL HOLES TO BE
14. WHITE BOARD (N.I.C.)	42. DIACRO BENDER (N.I.C.)	70. AUTO PARTS CLEANER (N.I.C.)	CAULKED & COVERED.
15. SMART BOARD (N.I.C.)	43. HORIZONTAL BAND SAW (N.I.C.)	71. BENCH WITH WEAPONS LOADING (N.I.C.)	102. MAILBOX CUBBIES WITH LOCKING COILING DOOR
16. MOBILE TOOL AND/OR	44. METAL SHEAR (N.I.C.)	72. TARGET AND STAND (N.I.C.)	(RE: INTERIOR ELEVATIONS)
ACCESSORY CABINET (N.I.C.)	45. METAL ROLLER (N.I.C.)	73. HAZARDOUS MATERIAL BINS (N.I.C.)	103. MECHANICAL SHAFT
17. HAZARDOUS MATERIAL LOCKER (N.I.C.)	46. ANVIL (N.I.C.)	74. FIRE CONTROL (N.I.C.)	104. FULL LENGTH WALL MOUNTED MIRROR
18. STORAGE LOCKER (N.I.C.)	47. QUENCH TANK (N.I.C.)	75. POWER VOLTAGE (N.I.C.)	105. REMOTE ELEVATOR CLUSE
19. STORAGE RACK (N.I.C.)	48. FURNACE (N.I.C.)	76. TURBET TRAINER (N.I.C.)	106. ROLLER SHADES FOR FULL EXTENT OF GLAZING
20. TOOL CHEST (N.I.C.)	49. METAL STORAGE RACK (N.I.C.)	77. TURBET TRAINER (N.I.C.)	107. PACK POLES (SEE ELECTRICAL)
21. WEAPONS RACK (N.I.C.)	50. AREA OF REFUGE	78. TURBET TRAINER (N.I.C.)	108. WASHER (N.I.C.)
22. FLAT FILE (N.I.C.)	51. AIR COMPRESSOR (N.I.C.)	79. TOOL WASH STATION (N.I.C.)	109. DRIVER (N.I.C.)
23. KIT BOX (N.I.C.)	52. BELT-SANDER (N.I.C.)	80. AUTO PARTS CLEANER (N.I.C.)	110. EXPANSION JOINT
24. WELDING BOOTH (N.I.C.)	53. LATERAL DRILL PRESS (N.I.C.)	81. BENCH WITH WEAPONS LOADING (N.I.C.)	111. FIRE ALARM CONTROL AND GRAPHIC PANELS
25. WORKBENCH W/ DRILL PRESS	54. VICE AND GRINDER (N.I.C.)	82. TARGET AND STAND (N.I.C.)	112. RECESSED FLOOR GRILLE WALL TO WALL
26. LATHE (N.I.C.)	55. CHERRY PICKER (N.I.C.)	83. MOBILE PARTS SHELF (N.I.C.)	113. EYE WASH STATION (N.I.C.)
27. MILLING MACHINE (N.I.C.)		84. BOOKSHELVES (WORKSTATION HEIGHT)	114. SAMESE CONNECTION

2013.03.21, 2:01pm dhp/jhc

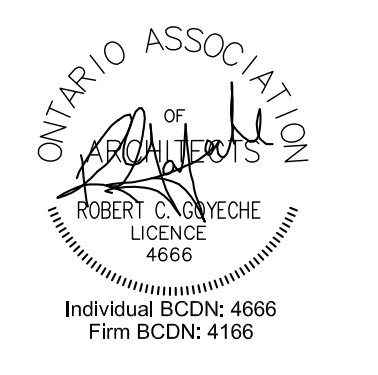
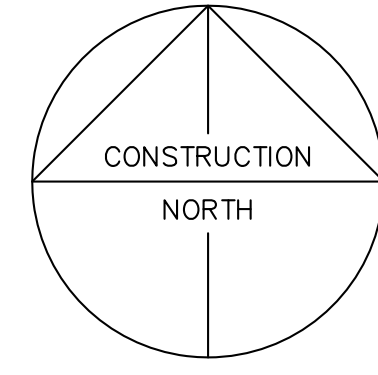
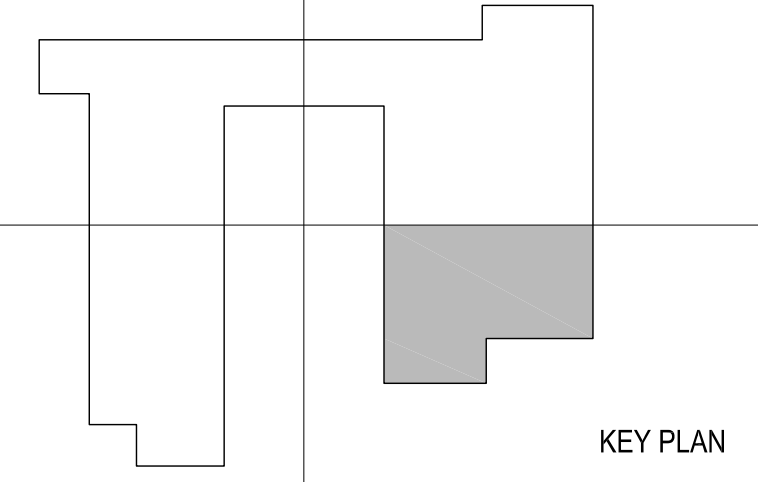
UNCLAS

This drawing is an instrument of service and is protected by copyright, copyright for the consultant's instrument of service belongs to the consultant. Copies including electronic copies, may only be used for the purpose intended and for a one-time use, on the same site, and for the same project and may not be offered for sale or transfer without the express written consent of the consultant.

Le présent dessin est un instrument de service protégé par le droit d'auteur. Le droit d'auteur sur l'instrument de service appartient à ce dernier. Les exemplaires de ce dessin, y compris les exemplaires électroniques, ne peuvent servir qu'à une seule fin, et ce, sur le même site, sur le même chantier et pour le même projet. Ils ne peuvent être offerts en vente ni transférés sans le consentement écrit expresse de l'expert-consultant.

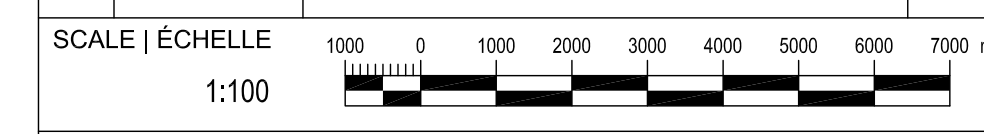


rounthwaite dick and hadley architects inc.



- LEGEND
- N.I.C. EQUIPMENT / FURNITURE
 - STEEL BRACING (RE: STRUCTURAL)
 - EXPANSION JOINT
 - P WALL TYPE SUFFIX 'P' DENOTES A PART-HEIGHT WALL

NO.	DATE	REVISION	APPR.
8	2013/06/21	ISSUED FOR TENDER	DH
7	2013/03/22	ISSUED FOR TENDER	DH
6	2012/10/26	ISSUED FOR 100%	DH
5	2012/06/28	ISSUED FOR 100% REVIEW	DH
4	2012/05/03	ISSUED FOR 99% REVIEW	DH
3	2012/03/08	ISSUED FOR 86% Review	DH
2	2012/01/26	ISSUED FOR 33% Review	DH
1	2011/11/25	ISSUED FOR DESIGN DEVELOPMENT	DH
#	2011/09/16	ISSUED FOR FINAL CONCEPT	DH

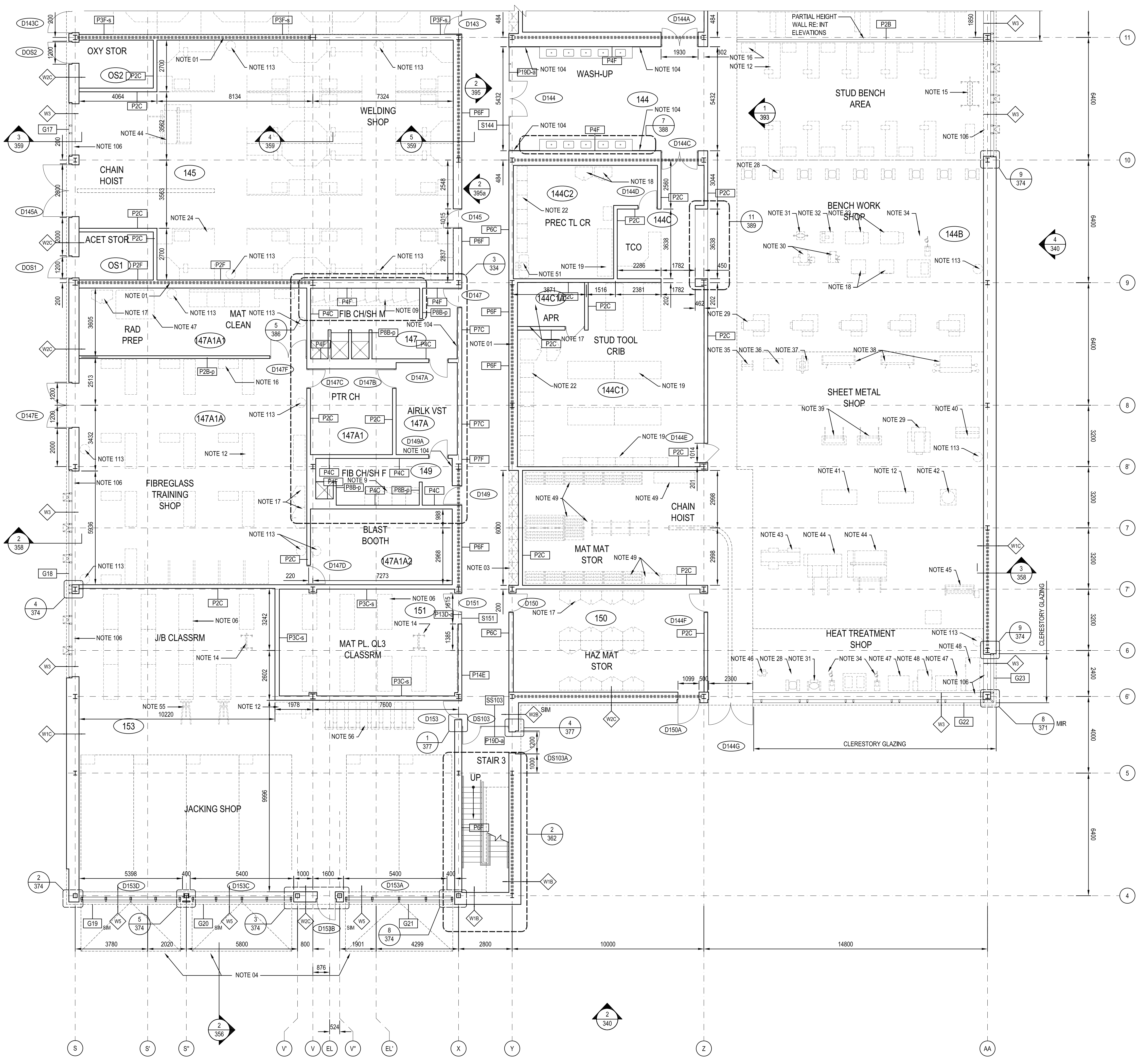


LOCATION | EMPLACEMENT
LUNDY LANE CFB BORDEN
PROJECT | PROJET
CANADIAN FORCES SCHOOL OF ELECTRICAL AND MECHANICAL ENGINEERING CONSOLIDATION

TRADE | MÉTIER
ARCHITECTURE
 DATE
2013.03.22

SUBJECT | SUJET
100 LEVEL FLOOR PLAN SOUTHEAST QUADRANT

DESIGNED ÉTUDIÉ	REVIEWED REVU	DES O AGENT CONC
GM	XX XX	XX
DRAWN DESSINÉ		PROJ MGR GEST PROJ
EB		NF
CHECKED VÉRIFIÉ		DES MGR GEST CONC
BG		XX
COORDINATION		FIRE INCENDIE
DH		XX
PF NUMBER No DP	DWG. NO. No. DESSIN	
HQ 1424 AA	H-B147-88135/01-313	



PLAN NOTES

01. STRUCTURAL BRACING	28. PEDESTAL GRINDER (N.I.C.)	56. JACK (N.I.C.)	90. PLOTTER (N.I.C.)
02. PASSIVE VENT SHAFT (ABOVE WHERE DASHED)	29. BAND SAW (N.I.C.)	57. STUDENT WORKSTATION W/ FUME HOOD (N.I.C.)	91. MODEL (N.I.C.)
03. MILLWORK DISPLAY OR STORAGE CABINET (N.I.C.)	30. DRILL PRESS (N.I.C.)	58. SCALE (N.I.C.)	92. TEST STAND (N.I.C.)
04. OVERHEAD DOOR	31. PEDESTAL BUFFER (N.I.C.)	59. TARGET (N.I.C.)	93. BISHOPKEY CABINET (N.I.C.)
05. AUTOMATIC DOOR	32. BELT SANDER (N.I.C.)	60. DRINKING FOUNTAIN W/ CANE DETECTABLE WARNING	94. STANDARDS OBSERVATION DESK (N.I.C.)
06. FIXED DESK (N.I.C.)	33. SAND BLASTER (N.I.C.)	61. MOP SINK	95. WORKBENCH W/ VICE GRIPS & DRILL (N.I.C.)
07. WORKSTATION (N.I.C.)	34. SPOT WELDER (N.I.C.)	62. CHANGE ROOM BENCH	96. TOW CONTAINER (N.I.C.)
08. EQUIPMENT PEDISTAL C/W STRUCTURAL ISOLATION	35. HYDRAULIC PRESS (N.I.C.)	63. PORTABLE GENERATOR (N.I.C.)	97. FLAMMABLE STORAGE (N.I.C.)
09. LOCKER (N.I.C.)	36. METAL NOTCHER AND BENDER (N.I.C.)	64. SPIRAL KIT (N.I.C.)	98. EQUIPMENT TESTING STAND (N.I.C.)
10. GLASS GUARD	37. ROTEX PUNCH (N.I.C.)	65. LATHE AND PRESS (N.I.C.)	99. LATHE AND PRESS (N.I.C.)
11. STAINLESS STEEL HANDRAIL	38. METAL BENDER (N.I.C.)	66. CLASSROOM TESTING STAND (N.I.C.)	100. CLASSROOM TESTING STAND (N.I.C.)
12. WORKBENCH (N.I.C.)	39. METAL BAR FOLDER (N.I.C.)	67. 13mm PLYWOOD WITH TWO COATS OF FIRE RETARDANT PAINT TO 2440 ON ALL WALLS, ALL JOINTS AND SCREW/HAL HOLES TO BE CAULKED & COVERED	101. 13mm PLYWOOD WITH TWO COATS OF FIRE RETARDANT PAINT TO 2440 ON ALL WALLS, ALL JOINTS AND SCREW/HAL HOLES TO BE CAULKED & COVERED
13. LECTERN (N.I.C.)	40. FORMING MACHINE (N.I.C.)	68. MECHANICAL SHAFT (RE: INTERIOR ELEVATIONS)	102. MILLWORK CUBES WITH LOCKING COLLING DOOR
14. WHITE BOARD (N.I.C.)	41. METAL HORNL GRIND AND BEND (N.I.C.)	69. TOOK WASH STATION (N.I.C.)	103. MECHANICAL SHAFT
15. SMART BOARD (N.I.C.)	42. DIACRO BENDER (N.I.C.)	70. SH GENERATOR (N.I.C.)	104. FULL LENGTH WALL MOUNTED MIRROR (RE: INTERIOR ELEVATIONS)
16. MOBILE TOOL AND/OR ACCESSORY CABINET (N.I.C.)	43. HORIZONTAL BAND SAW (N.I.C.)	71. TRANSFORMER (N.I.C.)	105. REMOTE ELEVATOR CLUSE
17. HAZARDOUS MATERIAL LOCKER (N.I.C.)	44. METAL SHEAR (N.I.C.)	72. BOOSTER CARTS (N.I.C.)	106. ROLLER SHADES FOR FULL EXTENT OF GLAZING
18. STORAGE LOCKER (N.I.C.)	45. METAL ROLLER (N.I.C.)	73. HAZARDOUS MATERIAL BINS (N.I.C.)	107. PACK POLES (SEE ELECTRICAL)
19. STORAGE RACK (N.I.C.)	46. ANVIL (N.I.C.)	74. FIRE CONTROL (N.I.C.)	108. WASHER (N.I.C.)
20. TOOL CHEST (N.I.C.)	47. QUENCH TANK (N.I.C.)	75. POWER VOLTAGE (N.I.C.)	109. DRIVER (N.I.C.)
21. WEAPONS RACK (N.I.C.)	48. FURNACE (N.I.C.)	76. TRANSFORMER (N.I.C.)	110. EXPANSION JOINT
22. FLAT FILE (N.I.C.)	49. METAL STORAGE RACK (N.I.C.)	77. BOOSTER CARTS (N.I.C.)	111. FIRE ALARM CONTROL AND GRAPHIC PANELS
23. KIT BOX (N.I.C.)	50. AREA OF REFUGE	78. POWER WASHER (N.I.C.)	112. RECESSED FLOOR GRILLE WALL TO WALL
24. WELDING BOOTH (N.I.C.)	51. AIR COMPRESSOR (N.I.C.)	79. TOOL WASH STATION (N.I.C.)	113. EYE WASH STATION (N.I.C.)
25. WORKBENCH W/ DRILL PRESS, VICE, AND GRINDER (N.I.C.)	52. BELT-SANDER (N.I.C.)	80. AUTO PARTS CLEANER (N.I.C.)	114. SAMESE CONNECTION
26. LATHE (N.I.C.)	53. LATERAL DRILL PRESS (N.I.C.)	81. BENCH WITH WEAPONS LOADING (N.I.C.)	
27. MILLING MACHINE (N.I.C.)	54. BENCH GRINDER (N.I.C.)	82. TARGET AND STAND (N.I.C.)	
	55. CHERRY PICKER (N.I.C.)	83. MOBILE PARTS (N.I.C.)	
		84. TURRET TRAINER (N.I.C.)	
		85. EQUIPMENT/STARS SHELF (N.I.C.)	
		86. BOOKSHELVES (WORKSTATION HEIGHT)	
		87. PRINT STATION	
		88. FREESTANDING DISPLAY CABINET (N.I.C.)	
		89. CORTEX STATION	

100 LEVEL FLOOR PLAN - SOUTHEAST QUADRANT scale 1:100

2013/03/21, 2:03pm d:\h\p\c\100 Level Floor Plans 100 Level Enlarged (RDH Lineweights).dwg