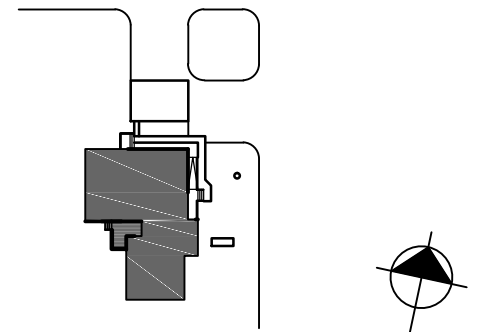


CONSULTANT - SUB-CONSULTANT:



KEYPLAN:



SCALE:

CLIENT:



Canada

CLIENT REF. #:

PROJECT:

ASHERN RCMP DETACHMENT

ASHERN, MB

COPYRIGHT:

COPYRIGHT IN THIS ELECTRONIC DOCUMENT BELONGS TO ARCHITECTURE 49 INC. THIS ELECTRONIC DOCUMENT MAY NOT BE FORWARDED TO OTHERS, TRANSMITTED, DOWNLOADED OR REPRODUCED IN ANY FORMAT, WHETHER PRINT OR ELECTRONIC, WITHOUT THE EXPRESS, WRITTEN PERMISSION OF THE COPYRIGHT OWNER.

DISCLAIMER:

THE CONTRACTOR SHALL CHECK AND VERIFY ALL DIMENSIONS AND UTILITY LOCATIONS AND REPORT ALL ERRORS AND OMISSIONS PRIOR TO COMMENCING WORK. THIS DRAWING IS NOT TO BE SCALED.

ISSUED FOR - REVISION:

NO.	DATE	DESCRIPTION
2	23/05/2017	ISSUED FOR TENDER
1	12/05/2017	ISSUED FOR REVIEW

IS.	RV.	DATE	DESCRIPTION
PROJECT NO:	149-12549-13	DATE:	2
ORIGINAL SCALE:	SEE NOTED	IF THIS BAR IS NOT 1" LONG, ADJUST YOUR PLOTTING SCALE.	
DESIGNED BY:	MJ		
CHECKED BY:	JC		

DISCIPLINE: ARCHITECTURE

TITLE: INTERIOR ELEVATIONS, SECTIONS & DETAILS

SHEET NUMBER: A103

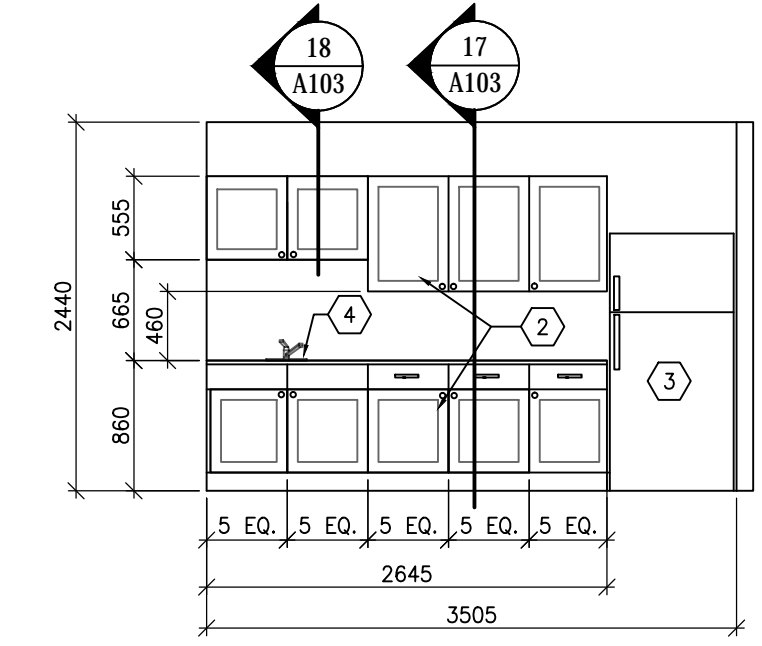
SHEET # 3 OF -

ISSUE: ISSUED FOR TENDER

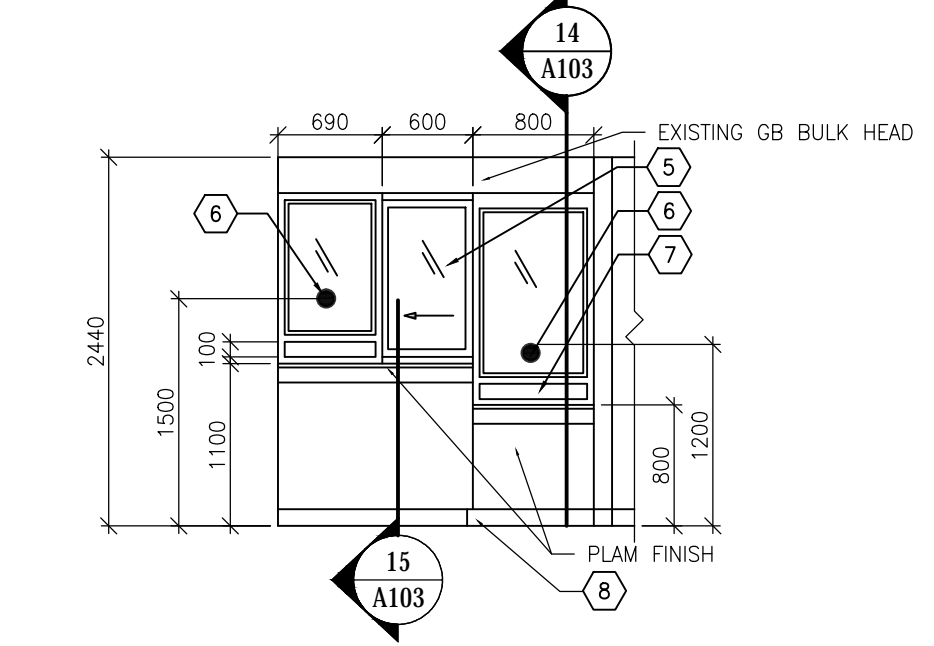
DATE OF: -

CONSTRUCTION KEYNOTES:

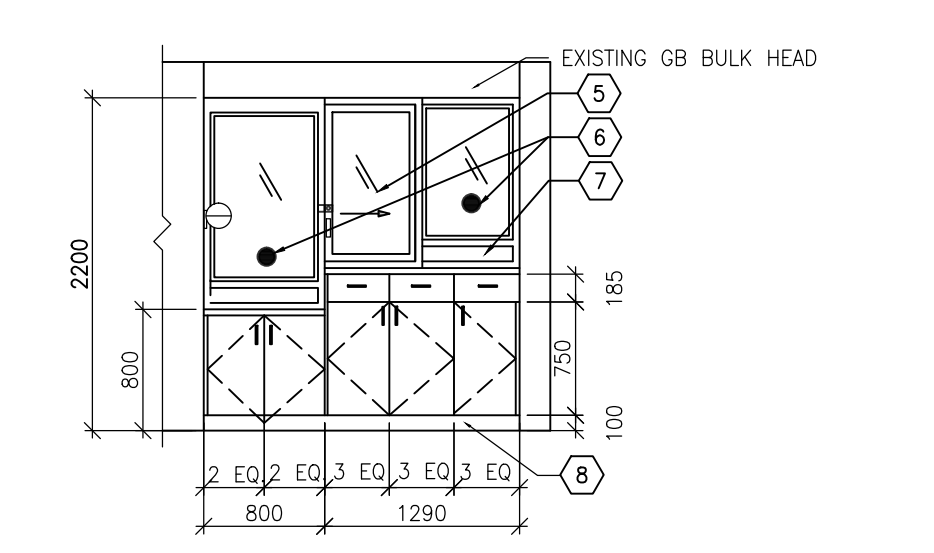
1. INFILL WINDOW OPENING.
2. KITCHEN CUPBOARDS/CABINETS.
3. RELOCATED REFRIGERATOR, FROM RM. 106.
4. SINK.
5. SLIDING PANEL.
6. SPEAKER PORT.
7. WINDOW PASS THROUGH CAV DROP DOWN DOOR.
8. RUBBER WALL BASE.



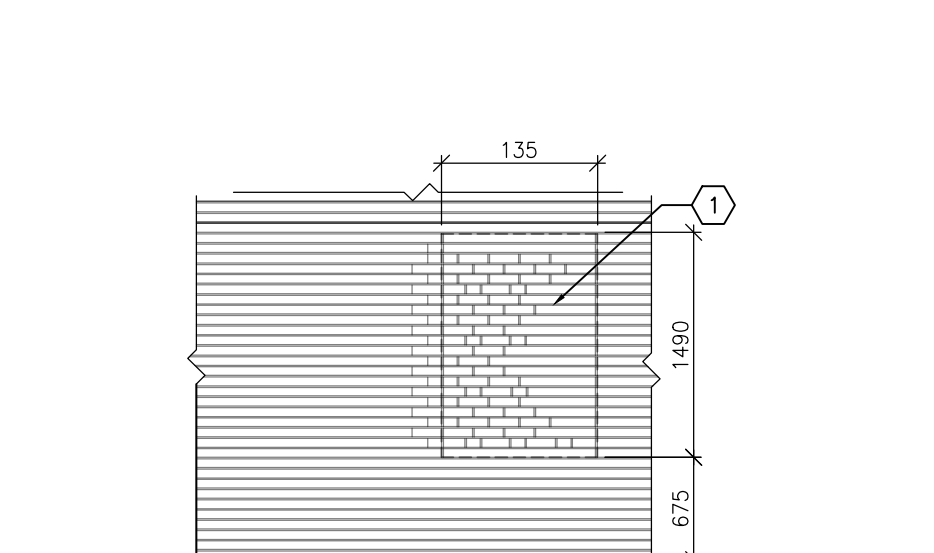
4 KITCHEN NORTH ELEVATION
A102/A103 1:50



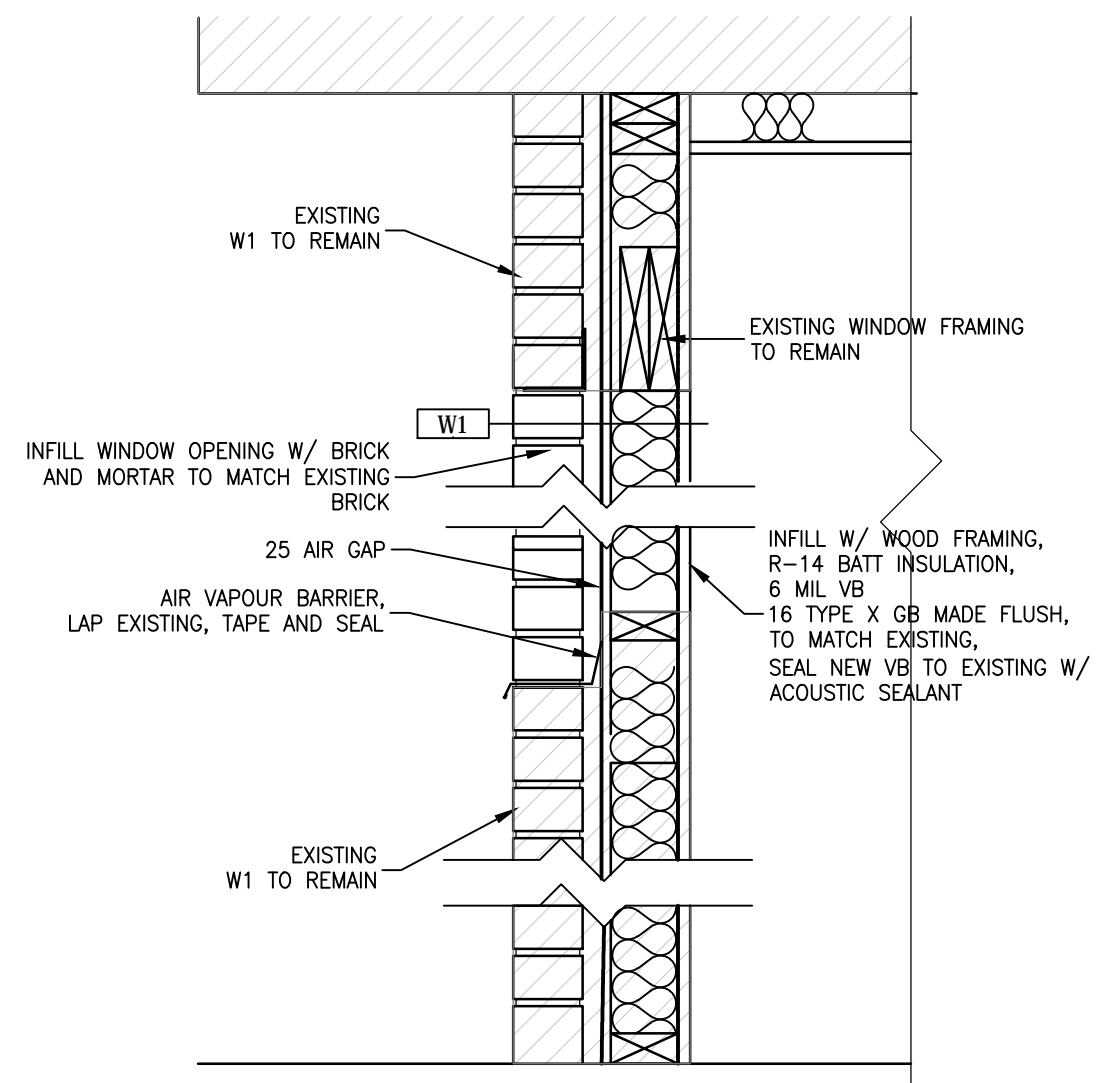
3 SECURITY BARRIER WEST ELEVATION
A102/A103 1:50



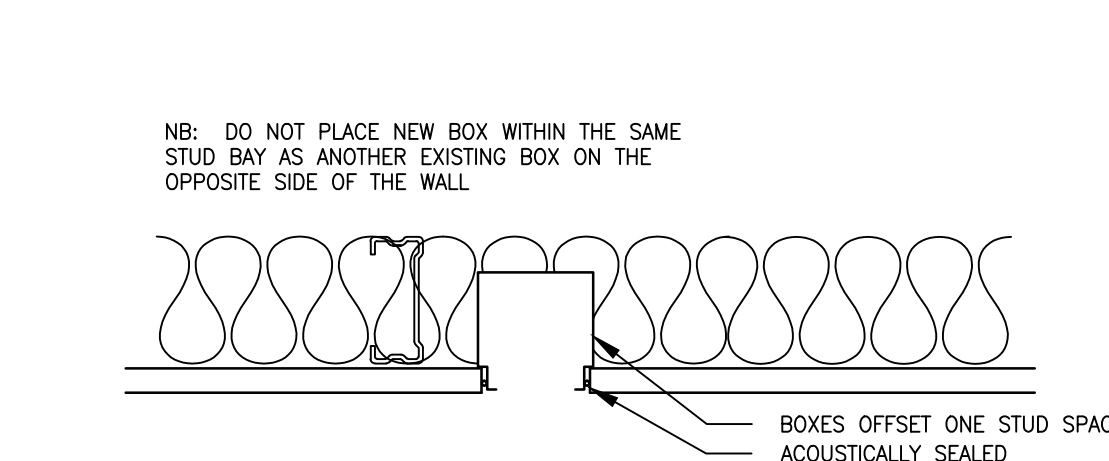
2 SECURITY BARRIER EAST ELEVATION
A102/A103 1:50



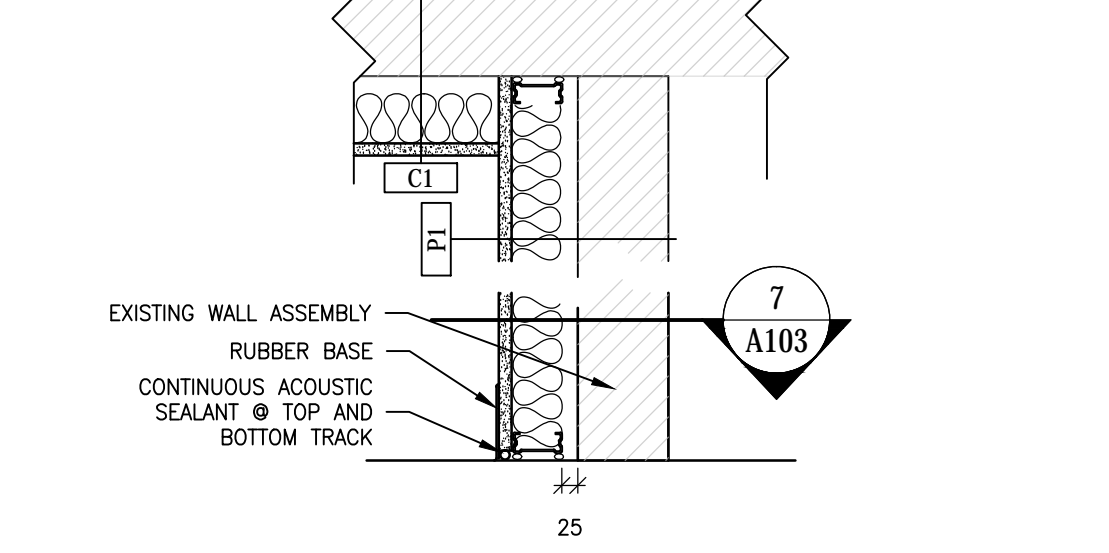
1 EXTERIOR BRICK WALL NORTH ELEVATION
A102/A103 1:50



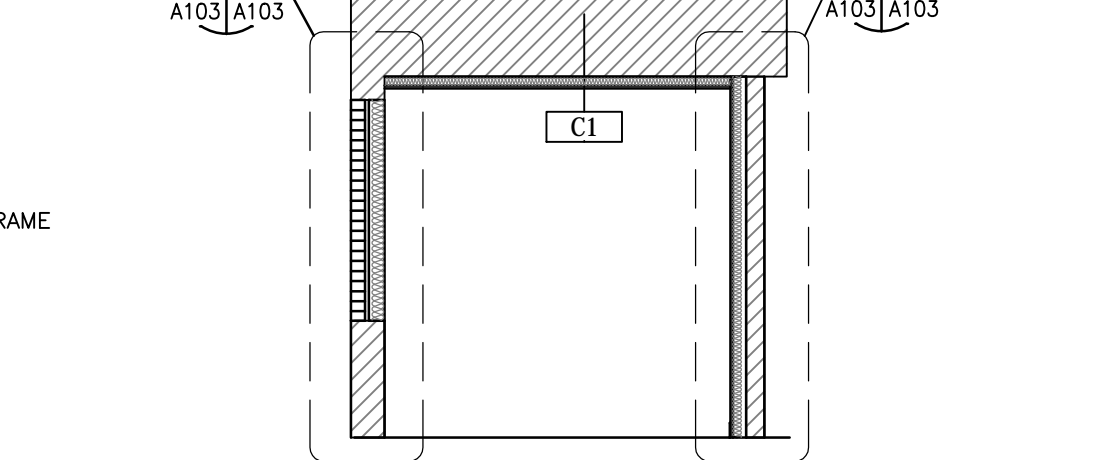
8 INTERVIEW ROOM SECTION
A102/A103 1:10



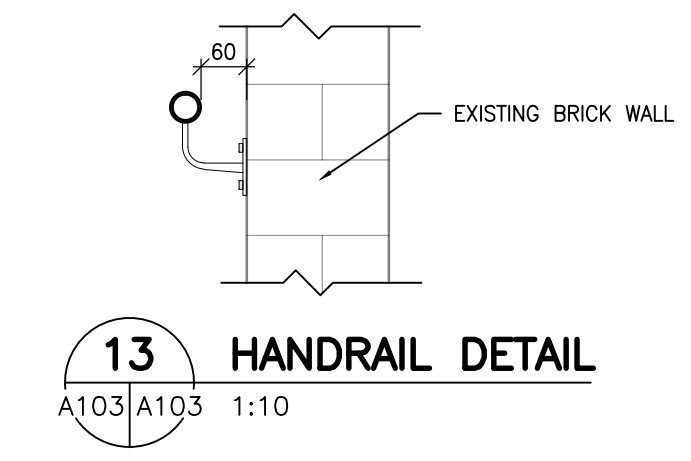
7 P1 PLAN DETAIL
A103/A103 1:5



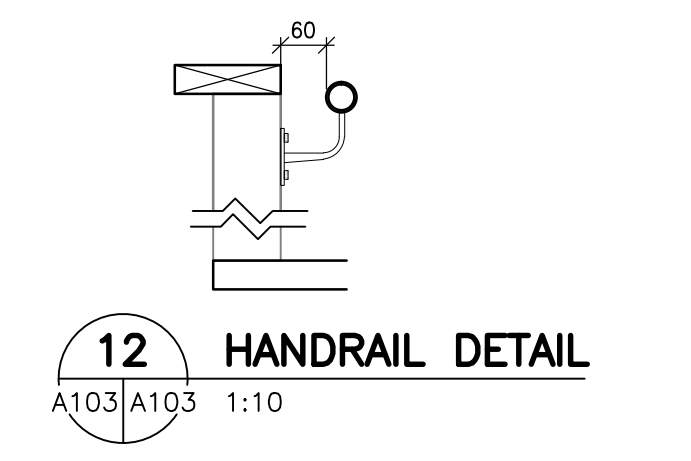
6 P1 WALL SECTION
A103/A103 1:10



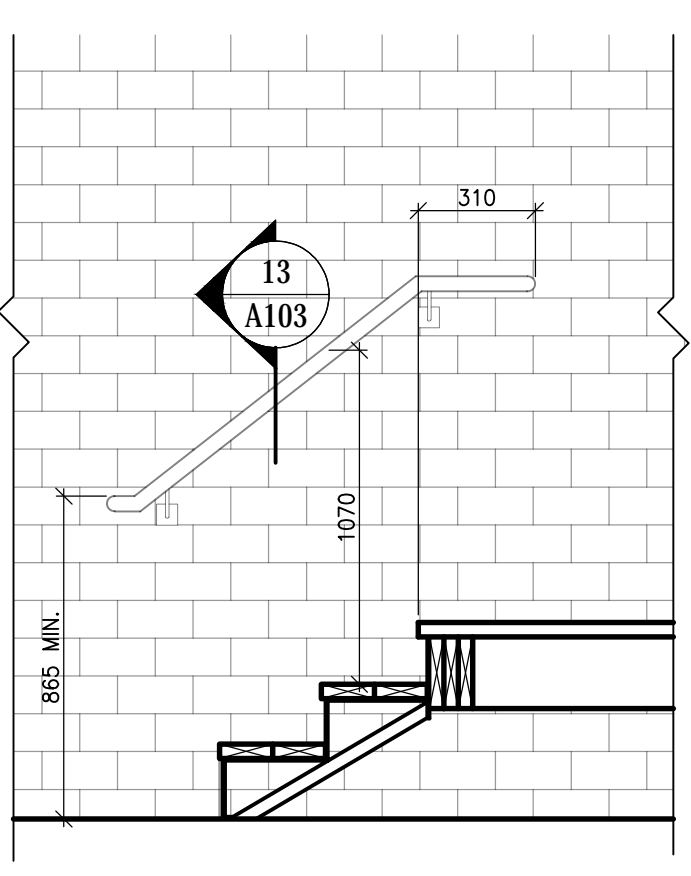
5 INTERVIEW ROOM SECTION
A102/A103 1:50



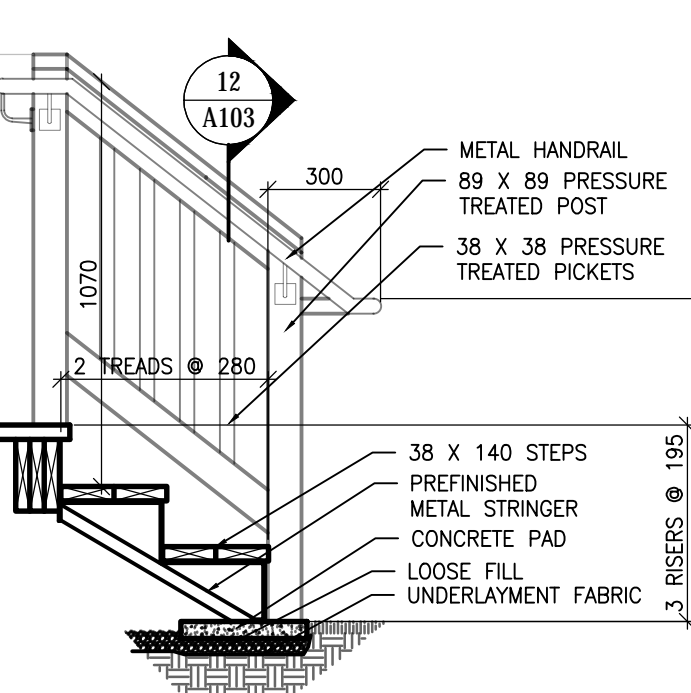
13 HANDRAIL DETAIL
A103/A103 1:10



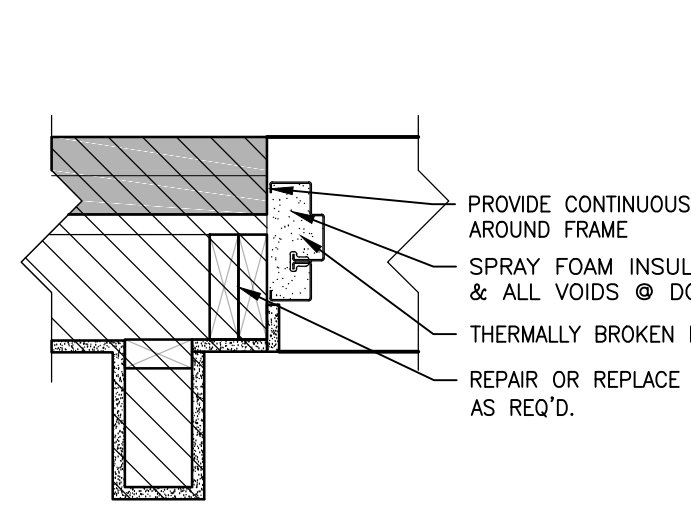
12 HANDRAIL DETAIL
A103/A103 1:10



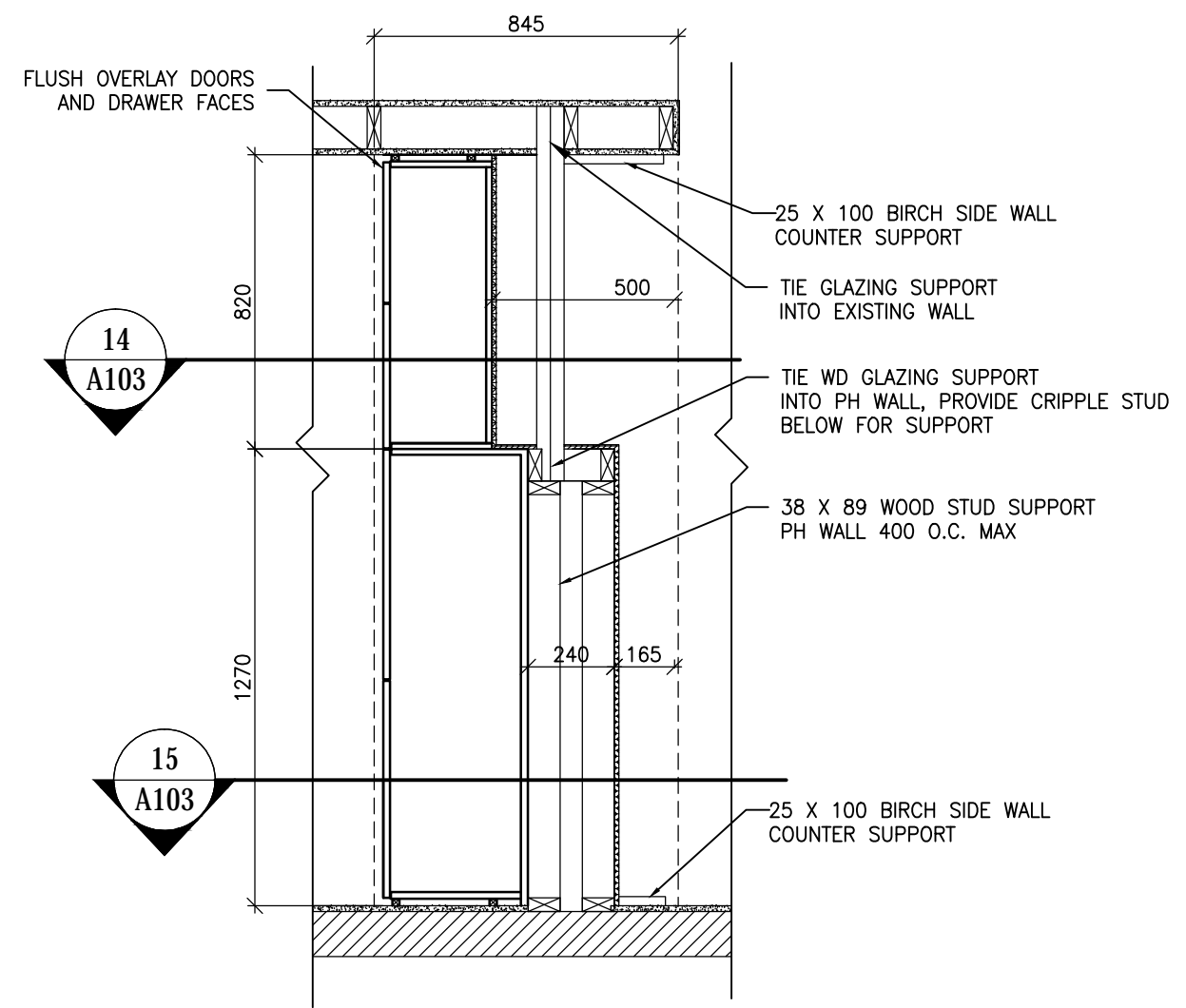
11 STAIR SECTION
A102/A103 1:20



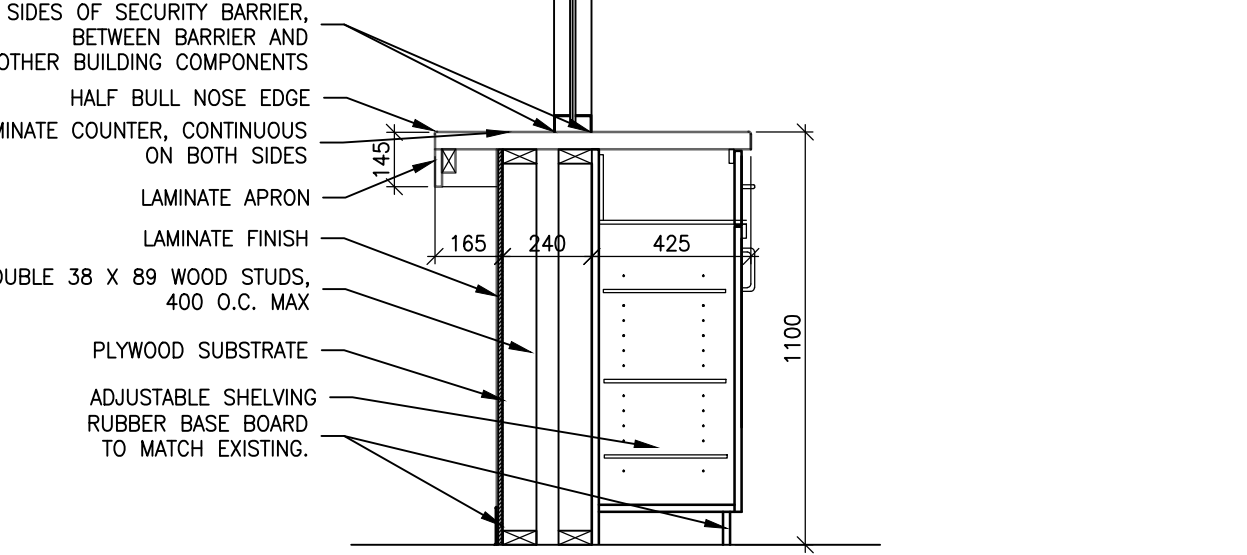
10 STAIR SECTION
A102/A103 1:20



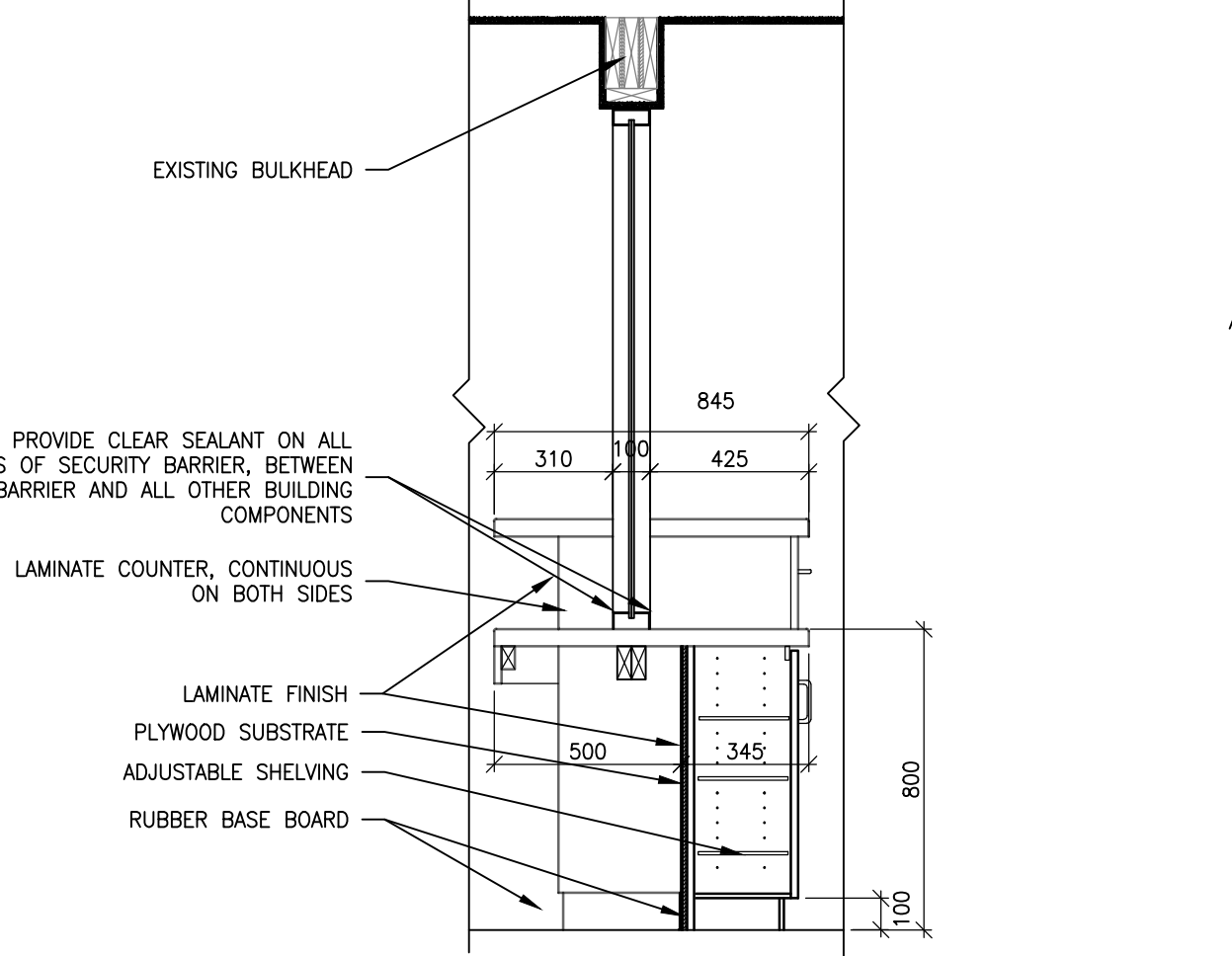
9 BACK DOOR @ JAMB
A102/A103 1:10



16 SECURITY BARRIER PLAN SECTION
A102/A103 1:20

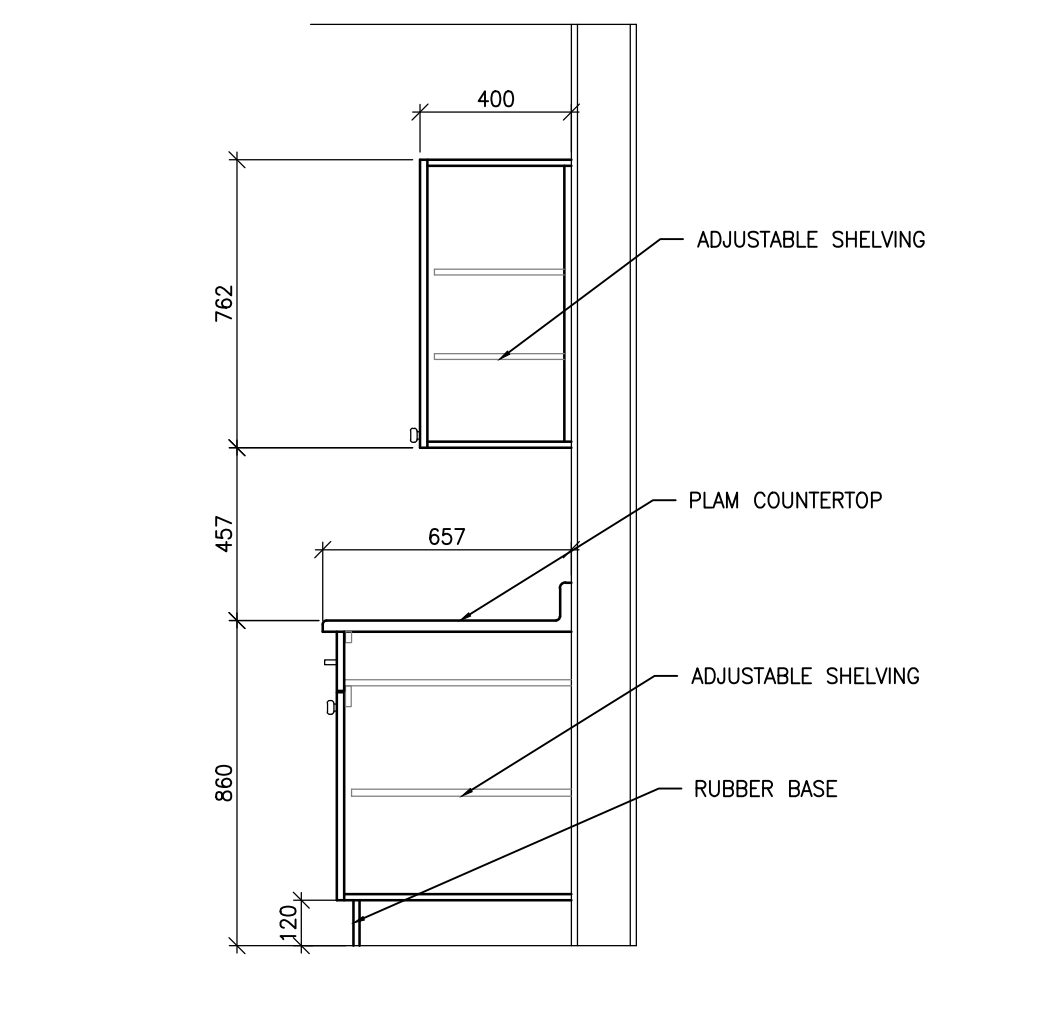


15 SECURITY BARRIER SECTION
A102/A103 1:20

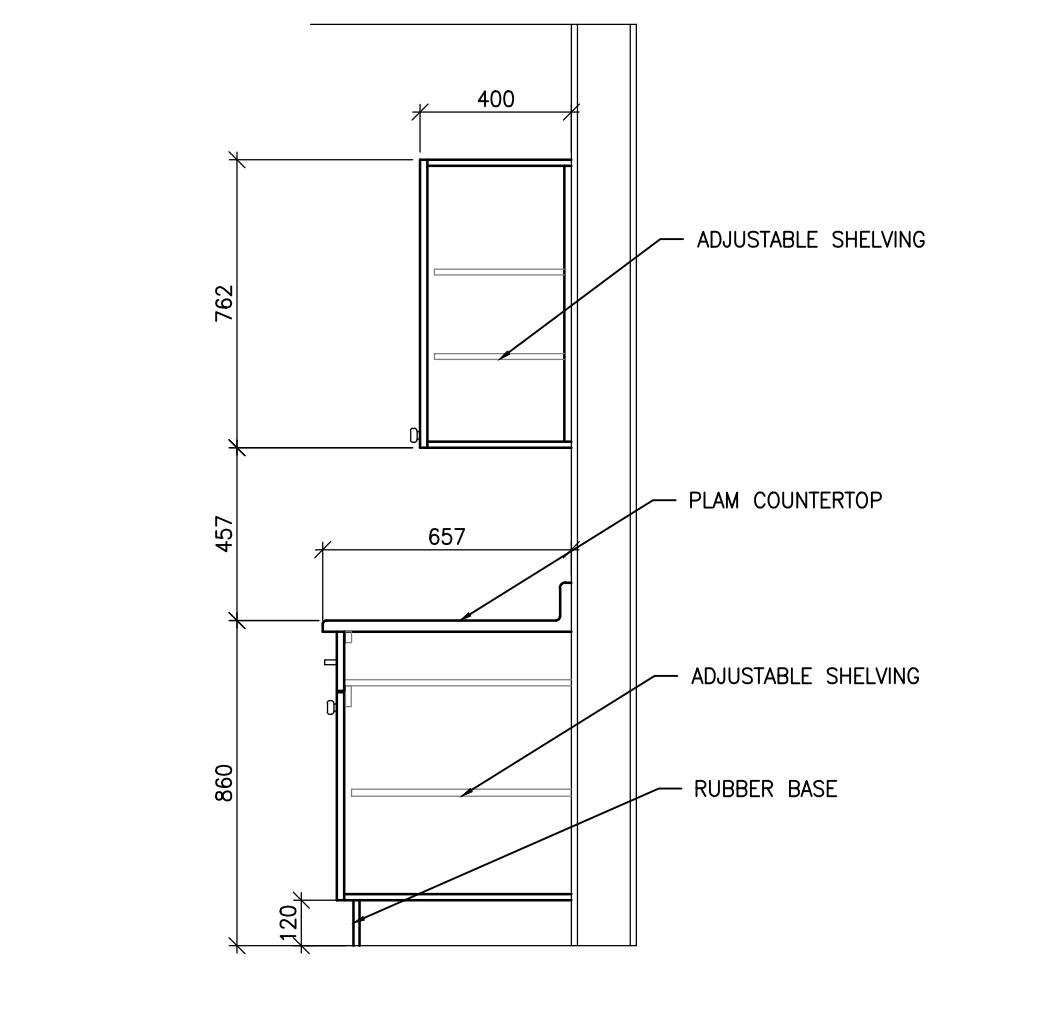


14 ACCESSIBLE SECURITY BARRIER SECTION
A102/A103 1:20

18 UPPER KITCHEN CABINET SECTION
A103/A103 1:20



17 KITCHEN COUNTER/CABINET SECTION
A103/A103 1:20



CONSULTANT - SUB-CONSULTANT



400 - 136 Market Avenue
Winnipeg, MB R3B 0P4
T 204 453 1080

KEYPLAN:

SCALE:



CLIENT:



CLIENT REF. #: GGH-10

PROJECT:

ASHERN RCMP DETACHMENT

ASHERN, MB

DISCLAIMER: THIS DRAWING AND DESIGN IS COPYRIGHT PROTECTED WHICH SHALL NOT BE USED, REPRODUCED OR REVISED WITHOUT WRITTEN PERMISSION BY MSP CANADA INC. THE CONTRACTOR SHALL CHECK AND VERIFY ALL DIMENSIONS AND UTILITY LOCATIONS AND REPORT ALL ERRORS AND OMISSIONS PRIOR TO COMMENCING WORK. THIS DRAWING IS NOT TO BE SCALED.

ISSUED FOR - REVISION:

NO.	DATE	DESCRIPTION
0	17-05-23	Issued for Tender

PROJECT NO. 17042

ORIGINAL SCALE: As indicated

DESIGNED BY: MLAM

DRAWN BY: MLAM

CHECKED BY: JFIMP

DISCIPLINE: ELECTRICAL

TITLE: ELECTRICAL SYMBOLS AND ABBREVIATIONS

SHEET NUMBER: E0.1

SHEET # 1 OF 8

ISSUE: --

DATE OF: 0

ELECTRICAL SYMBOL LEGEND

HT AFF	SYMBOL	DESCRIPTION	HT AFF	SYMBOL	DESCRIPTION	HT AFF	SYMBOL	DESCRIPTION	HT AFF	SYMBOL	DESCRIPTION
AS NOTED	[Symbol]	SURFACE INCANDESCENT LIGHT (TYPE DENOTED)	AS NOTED	[Symbol]	SPECIAL RECEPT. OR CONN. (SEE SCHEDULE)	47"	[Symbol]	SINGLE POLE SW.	92"	[Symbol]	FIRE ALARM
AS NOTED	[Symbol]	SURFACE LIGHT (TYPE DENOTED)	AS NOTED	[Symbol]	JUNCTION BOX	47"	[Symbol]	2 POLE SINGLE THROW SW.	92"	[Symbol]	FIRE ALARM HORN
AS NOTED	[Symbol]	WALL MOUNTED FLOODLIGHT (TYPE DENOTED)		[Symbol]	PULL BOX	47"	[Symbol]	3-WAY SW.	92"	[Symbol]	FIRE ALARM HORN W/STROBE (CANDELAS)
	[Symbol]	RECESSED LIGHT (TYPE DENOTED)		[Symbol]	AUTOMATIC DOOR OPERATOR PUSHBUTTON	47"	[Symbol]	4-WAY SW.	92"	[Symbol]	FIRE ALARM BELL
PER SCHED	[Symbol]	POLE MOUNTED LIGHT (TYPE DENOTED)	78"	[Symbol]	CIRCUIT BREAKER PANEL	47"	[Symbol]	DIMMER SWITCH	72"	[Symbol]	FIRE ALARM STROBE (CANDELAS)
	[Symbol]	SURFACE LIGHT (TYPE DENOTED)	78"	[Symbol]	POWER OR DISTRIBUTION PANEL	47"	[Symbol]	OCCUPANCY SENSOR SWITCH	8"	[Symbol]	FIRE ALARM REMOTE ANNUNCIATOR
	[Symbol]	SUSPENDED OR PENDANT LIGHT (TYPE DENOTED)	78"	[Symbol]	SPECIAL CABINET (TYPE DENOTED)	47"	[Symbol]	PUSH BUTTON	47"	[Symbol]	SMOKE DETECTOR (TYPE & CO DENOTED)
	[Symbol]	RECESSED LIGHT (TYPE DENOTED)		[Symbol]	MOTOR (SEE SCHEDULE)		[Symbol]	OCCUPANCY SENSOR - TYPE DENOTED		[Symbol]	HEAT DETECTOR (TYPE & TEMP DENOTED)
	[Symbol]	STRIP LIGHT (TYPE DENOTED)		[Symbol]	END OF LINE RESISTOR	AS NOTED	[Symbol]	LIGHT LEVEL SENSOR - TYPE DENOTED		[Symbol]	F.A. DOOR HOLDER
96"	[Symbol]	EMERGENCY BATTERY LIGHT (TYPE DENOTED)		[Symbol]	ELECTRIC STRIKE		[Symbol]	PHOTOCCELL		[Symbol]	F.A. DOOR CLOSER
	[Symbol]	EMERGENCY LIGHT - SINGLE REMOTE HEAD		[Symbol]	MAGNETIC LOCK	16"	[Symbol]	RECEPTACLES		[Symbol]	SELF-CONTAINED SMOKE ALARM (CO DENOTES COMBO)
	[Symbol]	EMERGENCY LIGHT - DOUBLE REMOTE HEAD		[Symbol]	COMBINATION LOCK		[Symbol]	DUPLEX RECEPT.		[Symbol]	SELF-CONTAINED AV SMOKE ALARM
12"	[Symbol]	EXIT SIGN (TYPE DENOTED)		[Symbol]	DOOR CONTACTS		[Symbol]	DUPLEX RECEPT MTD ABOVE COUNTER		[Symbol]	SELF-CONTAINED CO ALARM
	[Symbol]	GENERAL ELECTRICAL		[Symbol]	CARD READER	36"	[Symbol]	DUPLEX RECEPT MTD IN MILLWORK			
	[Symbol]	LIGHT SYMBOL INDICATES EXISTING	47"	[Symbol]	KEYPAD		[Symbol]	DUPLEX RECEPT CW WET LOCATION COVERPLATE			
	[Symbol]	DASHED SYMBOL INDICATES REMOVED	47"	[Symbol]	TELEPHONE OUTLET (TYPE DENOTED)	16"	[Symbol]	DUPLEX RECEPT CW INTEGRAL GFI			
	[Symbol]	KEYED NOTE (SEE SCHEDULE)		[Symbol]	COMMUNICATION OUTLET (TYPE DENOTED)	16"	[Symbol]	DUPLEX RECEPT NEMA 5-20R CONFIG			
	[Symbol]	DEMOLITION NOTE (SEE SCHEDULE)		[Symbol]	TELEVISION OUTLET	16"					
	[Symbol]	REVISION TAG									

ALL DISTANCES ARE TO CENTER OF DEVICE OR EQUIPMENT UNLESS OTHERWISE NOTED. DEVICES INDICATED AT 47" MAY NOT BE INSTALLED WITH ANY OPERABLE PART HIGHER THAN 47". DEVICES MAY BE INSTALLED IN CONCRETE MASONRY UNITS WITH THE TOP OF THE DEVICE AT 47".
* DISTANCE ABOVE TOP OF DOOR FRAME ** DISTANCE TO TOP OF EQUIPMENT OR DEVICE *** DISTANCE TO HIGHEST OPERABLE PART OF EQUIPMENT **** DISTANCE BELOW CEILING ***** DISTANCE TO BOTTOM OF DEVICE

ELECTRICAL SYMBOL NOTES

THE LIGHTING FIXTURE TYPE IS INDICATED BY UPPER CASE LETTERS AND NUMBERS. THE CIRCUIT DESIGNATION IS INDICATED BY LETTERS AND NUMBERS SEPERATED BY DASH. THE SWITCH DESIGNATION IS INDICATED BY A LOWER CASE LETTER.

EXAMPLE 1: LIGHTING FIXTURE TYPE "FLO1" IS CONNECTED TO PANEL A, CIRCUIT 12 AND CONTROLLED BY SWITCH "b".

EXAMPLE 2: THE FIXTURE TYPE SHOWN AS A NUMERATOR INDICATES ALL LIGHTING FIXTURES IN THE ROOM OR SPACE ARE THE SAME TYPE. THE CIRCUIT NUMBER AND SWITCH DESIGNATION SHOWN AS A DENOMINATOR INDICATES ALL LIGHTING FIXTURES IN THE ROOM OR SPACE ARE CONNECTED TO THE SAME CIRCUIT, CONTROLLED BY THE SAME SWITCHES. CENTER/OUTBOARD MULTILEVEL SWITCHING.

EXIT LIGHTS. STEM INDICATES WALL MOUNTING. NO STEM INDICATES CEILING MOUNTING. SHADED AREA INDICATES ILLUMINATED FACE(S). ARROW INDICATES DIRECTIONAL ARROW ON ILLUMINATED FACE(S). THE SIGNAGE TYPE IS INDICATED BY UPPER CASE LETTERS AND NUMBERS PRECEDING THE "Y". THE ASSOCIATED BATTERY BANK IS INDICATED BY UPPER CASE LETTERS AND NUMBERS FOLLOWING THE "Y". THE AC CIRCUIT DESIGNATION IS INDICATED BY A NUMBER. EXAMPLE: THE WALL MOUNTED EXIT LIGHT TYPE "EX1" WITH SINGLE FACE AND DIRECTIONAL ARROW IS CONNECTED TO BATTERY BANK "BU1" AND AC CIRCUIT 14 FROM PANEL A.

DEVICES. THE CIRCUIT DESIGNATION IS INDICATED BY A NUMBER. THE SWITCH DESIGNATION IS INDICATED BY A LOWER CASE LETTER. EXAMPLE: SPLIT DUPLEX RECEPTACLE IS CONNECTED TO PANEL A, CIRCUIT 16 AND ONE RECEPTACLE OUTLET IS CONTROLLED BY SWITCH "c".

THE CONTROL DEVICE DESIGNATION IS INDICATED BY A LOWER CASE LETTER. EXAMPLE: SINGLE POLE SWITCH "q" TO CONTROL LIGHTING FIXTURES INDICATED BY "t".

WALL BOX DIMMER WITH SIZE AS INDICATED AT DEVICE. EXAMPLE: 600 WATT WALL BOX DIMMER TO CONTROL LIGHTING FIXTURES INDICATED BY "e". SEE SPECIFICATIONS FOR WATTAGE IF NOT INDICATED.

SPECIAL CONNECTIONS. THE EQUIPMENT IS INDICATED BY A NUMBER IN A CIRCLE. SEE THE MOTOR AND EQUIPMENT SCHEDULE FOR THE LOAD DESCRIPTION AND TYPE OF CONNECTION. THE CIRCUIT DESIGNATION IS INDICATED BY A NUMBER(S) ADJACENT TO THE SYMBOL. EXAMPLE: EQUIPMENT NO. 1; 3 PHASE CONNECTION TO PANEL A, CIRCUITS 1, 3, 5.

MOTOR CONNECTIONS. THE MOTOR IS INDICATED BY A NUMBER WITHIN OR CHARACTERS ADJACENT TO THE MOTOR SYMBOL. SEE THE MOTOR AND EQUIPMENT SCHEDULE FOR THE MOTOR DESCRIPTION AND ELECTRICAL REQUIREMENTS. THE CIRCUIT DESIGNATION IS INDICATED BY A NUMBER(S) ADJACENT TO THE HEATER. EXAMPLE: ELECTRIC BASEBOARD HEATER TYPE "H10" CONNECTED TO PANEL A, CIRCUITS 2, 4, 6.

ELECTRIC HEATER CONNECTIONS. THE HEATER TYPE IS INDICATED BY A NUMBER FOLLOWING THE UPPER CASE LETTER "H". SEE THE HEATER SCHEDULE FOR ELECTRICAL REQUIREMENTS. THE CIRCUIT DESIGNATION IS INDICATED BY A NUMBER(S) ADJACENT TO THE HEATER. EXAMPLE: ELECTRIC BASEBOARD HEATER TYPE "H10" CONNECTED TO PANEL A, CIRCUITS 2, 4, 6.

TRANSFORMERS. THE TRANSFORMER TYPE IS INDICATED BY A NUMBER FOLLOWING THE UPPER CASE LETTER "T". SEE THE TRANSFORMER SCHEDULE OR THE SINGLE LINE DIAGRAM FOR THE TRANSFORMER DESCRIPTION AND REQUIREMENTS. EXAMPLE: TRANSFORMER TYPE "T1".

PANELBOARDS. PANELBOARD DOORS MAY BE SHOWN TO INDICATE OPENING SIDE OF RECESSED PANELBOARDS. SEE PANELBOARD IDENTIFICATION FOR DESIGNATION CODES.

KEYNOTE. SEE THE KEYED NOTES ON THAT SHEET FOR THE NOTE NUMBER INDICATED.

CONDUIT SHOWN WITHOUT SLASH MARKS SHALL CONTAIN 2 #12 CONDUCTORS IN 3/4" CONDUIT UNLESS SPECIFIC EQUIPMENT REQUIRES A DIFFERENT SIZE.

CONDUIT SHOWN WITH SLASH MARKS SHALL CONTAIN 1 #12 CONDUCTOR PER SLASH MARK IN 3/4" CONDUIT UNLESS A CONDUCTOR AND CONDUIT SIZE IS SHOWN ADJACENT TO THE SLASH MARKS. SLASH MARK INDICATORS ARE: SHORT STRAIGHT-PHASE CONDUCTOR, LONG STRAIGHT-NEUTRAL CONDUCTOR, SHORT BENT ENDED-SWITCH LEGS, LONG STRAIGHT WITH A DOT-GROUNDING CONDUCTOR, CHEVRON-CATEGORY 6, HALF CHEVRON-CATEGORY 3, TWIST-SHEATHED TWISTED PAIR, CONCENTRIC CIRCLE AND DOT-COAX CABLE.

HOME RUN TO BRANCH CIRCUIT PANELBOARD. THE PANELBOARD DESIGNATION IS SHOWN ADJACENT TO THE HOME RUN ARROW AS A NUMERATOR AND THE CIRCUIT DESIGNATION IS SHOWN AS THE DENOMINATOR. CIRCUIT BREAKER SIZES (AMP/NUMBER OF POLES) ARE SHOWN IN THE PANELBOARD SCHEDULE WITH THE CORRESPONDING PANELBOARD AND CIRCUIT DESIGNATION. EXAMPLE: HOME RUN TO PANELBOARD LPN-102, CIRCUITS 1, 3, 5.

SYMBOL NOTATIONS: UPPER CASE LETTERS ADJACENT TO SYMBOLS INDICATE A UNIT TYPE. SEE APPROPRIATE SCHEDULE OR SPECIFICATIONS.

ELECTRICAL ABBREVIATIONS LIST

1P	1 POLE (2P, 3P, 4P, ETC.)	FLR	FLOOR	NTS	NOT TO SCALE
A	AMPERE	FR	REFRIGERATOR	PB	PULL BOX OR PUSHBUTTON
ADO	AUTOMATIC DOOR OPENER	GC	GENERAL CONTRACTOR	PEP	PEDESTAL
AF	ABOVE FINISHED FLOOR	GFI	GROUND FAULT CIRCUIT INTERRUPTER	PH	PHASE
ANNUN	ANNUNCIATOR	GYP BD	GYP/SUM BOARD	PNL	PANEL
APPROX	APPROXIMATELY	HORIZ	HORIZONTAL	PVC	POLYVINYL CHLORIDE (CONDUIT)
ARCH	ARCHITECT, ARCHITECTURAL	HT	HEIGHT	PWR	POWER
AUTO	AUTOMATIC	HTR	HEATER	QUAN	QUANTITY
AUX	AUXILIARY	HVAC	HEATING, VENTILATING AND AIR CONDITIONING	R	RELOCATED
AWG	American WIRE GAUGE	RCPT	RECEPTACLE	REQD	REQUIRED
BLDG	BUILDING	INCAND	INCANDESCENT	SC	SURFACE CONDUIT
C	CONDUIT	IPLC	INTELLIGENT PARKING LOT CONTROLLER	SHT	SHEET
CAB	CABINET	J-BOX	JUNCTION BOX	SIM	SIMILAR
CB	CIRCUIT BREAKER	KW	KILOWATT	SPEC	SPECIFICATION
CKT	CIRCUIT	LOC	LOCATE OR LOCATION	SP	SPARE
CLG	CEILING	LT	LIGHT	SU	SUMP PUMP
CONN	CONNECTION	LTG	LIGHTING	SURF	SURFACE MOUNTED
CONST	CONSTRUCTION	MAX	MAXIMUM	SW	SWITCH
CONT	CONTINUATION OR CONTINUOUS	MCB	MAIN CIRCUIT BREAKER	SYM	SYMMETRICAL
CONTR	CONTRACTOR	MDC	MAIN DISTRIBUTION CENTER	SYS	SYSTEM
CTR	CENTER	MDF	MECHANICAL DISTRIBUTION CENTER	T-STAT	THERMOSTAT
CJ	CORNER	MFR	MANUFACTURER	TYP	TYPICAL
CW	COMPLETE WITH	MIS	MAIN FUSED DISCONNECT SWITCH	UC	UNDER COUNTER
DET	DETAIL	MISC	MISCELLANEOUS	UH	UNIT HEATER
DIA	DIAMETER	MLO	MAIN LUGS ONLY	UTIL	UTILITY
DISC	DISCONNECT	MT	MOUNT	V	VOLT
DIST	DISTRIBUTION	MTD	MOUNTED	VA	VOLT-AMPERES
DN	DOWN	MW	COORDINATED IN MILLWORK	VERT	VERTICAL
DWG	DRAWING	NEC	NATIONAL ELECTRICAL CODE	W	WATT
EC	ELECTRICAL CONTRACTOR	NIC	NOT IN CONTRACT	WI	WITH
ELEC	ELECTRIC, ELECTRICAL	NL	NIGHT LIGHT	WG	WIRE GUARD
EM	EMERGENCY			WO	WITHOUT
EMT	ELECTRICAL METALLIC TUBING			WP	WEATHERPROOF
EQUIP	EQUIPMENT				
EXIST	EXISTING				
FA	FIRE ALARM				
FACP	FIRE ALARM CONTROL PANEL				
FIXT	FIXTURE				

GENERAL ELECTRICAL NOTES

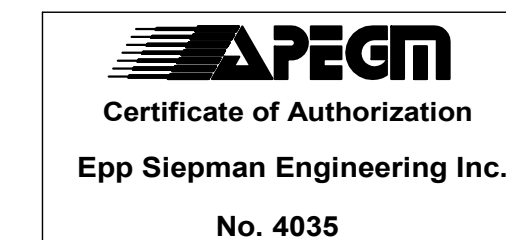
- THE GENERAL NOTES AS DESCRIBED HEREIN, APPLY TO ALL DRAWINGS IN THIS PACKAGE WHERE APPLICABLE.
- PENETRATIONS IN WALLS OR SEPERATIONS, REQUIRING PROTECTED OPENINGS SHALL BE FIRESTOPPED WITH AN APPROVED MATERIAL.
- EXPOSED WIRING SHALL NOT BE PERMITTED. WIRING SHALL BE RECESSED IN WALL OR WIREPRE WALLS ARE NOT PERMITTED DUE TO WALL CONSTRUCTION (CONCRETE BLOCK, CONCRETE, BRICK, ETC), PROVIDE CONDUIT AS REQUIRED TO CONCEAL SAME.
- REFER TO ARCHITECTURAL FLOOR PLANS, ELEVATIONS AND DETAILS, INCLUDING MILLWORK DETAILS AND SHOP DRAWINGS FOR COORDINATION OF ELECTRICAL DEVICE LOCATIONS, METHOD OF INSTALLATION & MOUNTING HEIGHTS. ARCHITECTURAL FLOOR PLANS, ELEVATIONS AND DETAILS TAKE PRECEDENCE OVER LOCATIONS SHOWN ON ELECTRICAL DRAWINGS.
- UNLESS NOTED OTHERWISE, THE CIRCUITING INDICATED ON THE DRAWINGS IS REPRESENTATIONAL ONLY. CONFIRM CIRCUITING REQUIREMENTS ON SITE.
- CIRCUIT NUMBERS AT DEVICES CORRESPOND TO PANELBOARD BREAKERS (SEE PANELBOARD SCHEDULE). BRANCH CIRCUITS SHALL BE SIZED ACCORDING TO THE CIRCUIT BREAKER RATING AND VOLTAGE DROP REQUIREMENTS, UNLESS INDICATED OTHERWISE ON THE ELECTRICAL EQUIPMENT SCHEDULE.
- MINIMUM CONDUIT SIZE SHALL BE 21mm (3/4") UNLESS NOTED OTHERWISE. CONDUIT AND WIRE SHALL NOT BE INSTALLED BELOW FLOOR SLAB UNLESS INDICATED ON PLAN BY DASHED CONDUITING.
- EMPTY CONDUIT SHALL BE CW PULL WIRE AND PLASTIC BUSHINGS.
- ALL RECESSED LIGHTING FIXTURES IN LAY-IN CEILINGS SHALL BE INSTALLED WITH #10 LONG FLEXIBLE METAL CONDUIT.
- WHERE CONNECTED TO A 20A. BRANCH CIRCUIT SUPPLYING AN INDIVIDUAL RECEPTACLE (SIMPLEX OR DUPLEX), THE RECEPTACLE SHALL BE RATED AT 20A.
- CONTRACTOR SHALL BE RESPONSIBLE FOR WIRING ALL ELECTRICAL ITEMS SHOWN ON THE DRAWINGS, INCLUDING THE FOLLOWING, UNLESS NOTED OTHERWISE:
 - REFER TO ARCHITECTURAL DRAWINGS AND SPECIFICATIONS FOR PHASES OF DEMOLITION AND CONSTRUCTION. COORDINATE WITH GENERAL CONSTRUCTION, AS INDICATED IN THE GENERAL NOTES, DEMOLITION NOTES, AND KEYNOTES IN THIS DRAWING PACKAGE. UNLESS NOTED OTHERWISE, THE TERM "REMOVE" SHALL INCLUDE THE COMPLETE REMOVAL OF THE EXISTING ITEM IDENTIFIED IN ITS CURRENT LOCATION ON THE DEMOLITION DRAWINGS, TO THE NEW LOCATION AS INDICATED ON THE RENOVATION DRAWINGS. INCLUDE ALL LABOUR AND MATERIALS TO REROUTE/EXTEND/REFEED THE EXISTING CIRCUITRY AS REQUIRED TO ACCOMMODATE THE RELOCATION. REFER TO THE RENOVATION DRAWING KEY NOTES FOR FURTHER REQUIREMENTS.
 - REFER TO ARCHITECTURAL DRAWINGS AND SPECIFICATIONS FOR PHASES OF DEMOLITION AND CONSTRUCTION. COORDINATE WITH GENERAL CONSTRUCTION, AS INDICATED IN THE GENERAL NOTES, DEMOLITION NOTES, AND KEYNOTES IN THIS DRAWING PACKAGE. UNLESS NOTED OTHERWISE, THE TERM "REMOVE" SHALL INCLUDE THE COMPLETE REMOVAL OF THE EXISTING ITEM IDENTIFIED IN ITS CURRENT LOCATION ON THE DEMOLITION DRAWINGS, TO THE NEW LOCATION AS INDICATED ON THE RENOVATION DRAWINGS. INCLUDE ALL LABOUR AND MATERIALS TO REROUTE/EXTEND/REFEED THE EXISTING CIRCUITRY AS REQUIRED TO ACCOMMODATE THE RELOCATION. REFER TO THE RENOVATION DRAWING KEY NOTES FOR FURTHER REQUIREMENTS.
 - PROVIDE WIRE AND CONDUIT AS REQUIRED FOR CONTINUITY OF ANY FEEDERS OR BRANCH CIRCUITS ORIGINATING OUTSIDE THE DEMOLITION AREA THAT SERVES ANY ELECTRICAL EQUIPMENT OR DEVICES TO REMAIN AFTER DEMOLITION. MODIFY OR REPLACE AS REQUIRED.
 - PROVIDE CONDUIT AND/OR COMMUNICATIONS/DATA WIRING AS NECESSARY FOR CONTINUITY OF ANY COMMUNICATIONS/DATA SYSTEMS ORIGINATING OUTSIDE THE DEMOLITION AREA THAT SERVES ANY COMMUNICATIONS/DATA EQUIPMENT OR DEVICES TO REMAIN AFTER DEMOLITION. MODIFY OR REPLACE AS REQUIRED.
 - PROVIDE BLANK COVERPLATES OVER ALL EXISTING UNUSED OPENINGS.
 - DEMOLISH ALL ELECTRICAL DEVICES IN WALLS TO BE DEMOLISHED. WALLS TO BE DEMOLISHED ARE SHOWN DASHED. DISCONNECT AND REMOVE ASSOCIATED.
 - ALL NEW WIRING SHALL BE CONCEALED WHERE POSSIBLE. UTILIZE CRAWLSPACE AND/OR ACCESSIBLE CEILING SPACE TO RUN NEW WIRING AS REQUIRED AND FISH INTO WALLS/MILLWORK.
 - WHERE EXISTING WALLS ARE TO BE OPENED FOR INSTALLATION OF NEW WIRING, COORDINATE WITH GENERAL CONTRACTOR ROUTING OF SAME. ARRANGE AND PAY FOR ALL CUTTING/REPAIRING AS REQUIRED.
 - WHERE BRANCH CIRCUIT BREAKERS ARE REMOVED, PROVIDE FILLER PLATES FOR BREAKER SPACES.
 - CIRCUIT BREAKERS SHALL MATCH EXISTING. CONFIRM SHORT CIRCUIT RATING AND TYPE ON SITE, PRIOR TO FINALIZING PRICING.
 - UTILIZE SPARE/FREED UP CIRCUITS FROM DEMOLITION AS REQUIRED TO ACCOMMODATE THE ADDITIONAL CIRCUITING REQUIREMENTS IN THE RENOVATION PROJECT. NEW TYPEWRITTEN PANEL DIRECTORIES TO ACCOMMODATE UPDATED CIRCUITING. NEW BREAKERS IN DISTRIBUTION PANELS SHALL BE LABELLED USING LAMMOIDS.

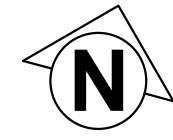
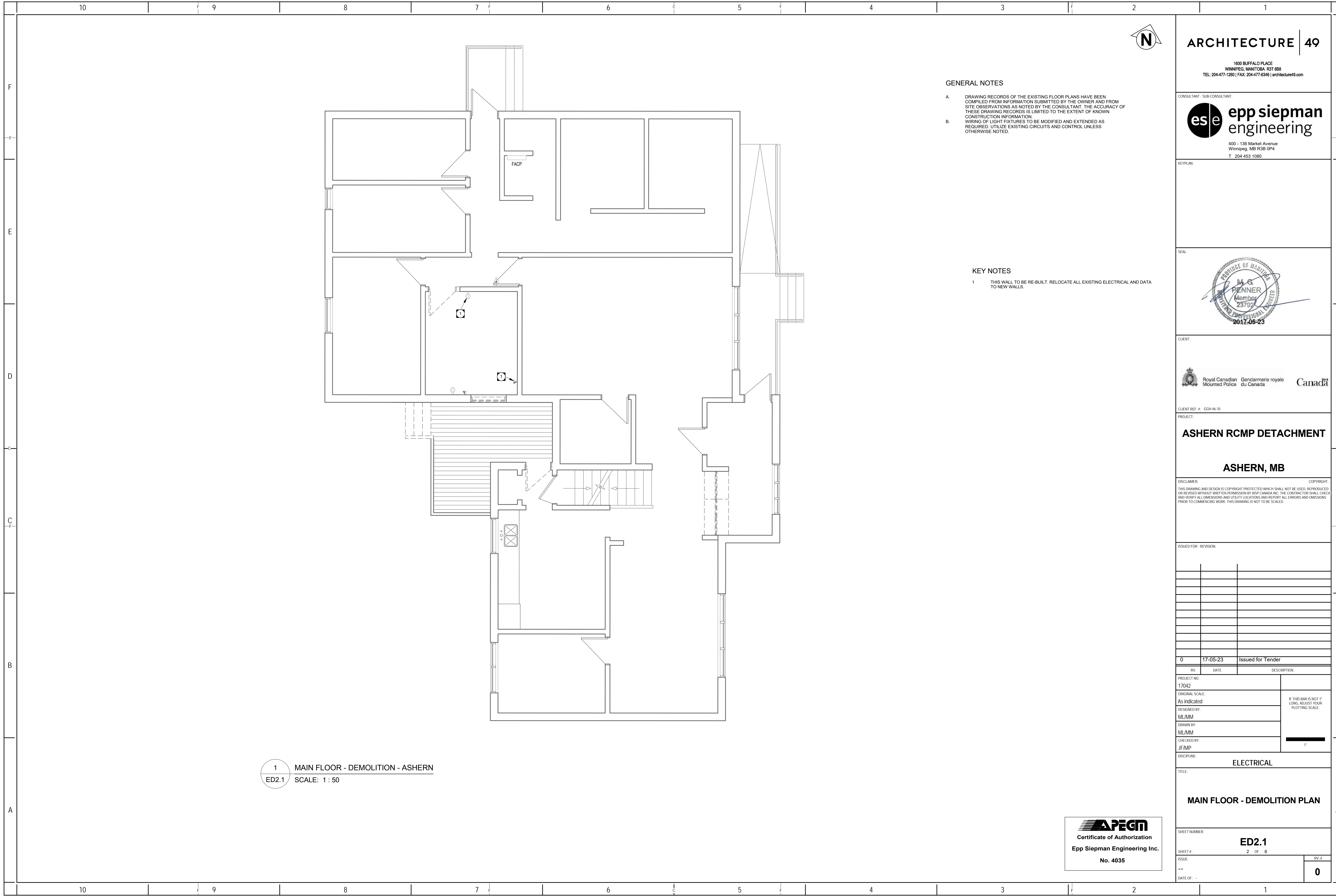
SPECIFIC CODE NOTES

- FIRE PROTECTION REQUIREMENTS**
- PENETRATIONS IN WALLS REQUIRING PROTECTED OPENINGS MUST BE FIRESTOPPED WITH AN APPROVED MATERIAL.
 - CONDUITS MAY PENETRATE WALLS OR PARTITIONS, PROVIDED THEY ARE FIRE-STOPPED.
 - OPENINGS FOR STEEL ELECTRICAL BOXES NOT EXCEEDING 16 SQUARE INCHES ARE PERMITTED PROVIDED OPENINGS DO NOT AGGREGATE MORE THAN 100 SQUARE INCHES FOR ANY 100 SQUARE FEET OF WALL OR PARTITION.
 - OUTLET BOXES ON OPPOSITE SIDES OF WALLS OR PARTITIONS MUST BE SEPARATED BY A HORIZONTAL DISTANCE OF 24 INCHES.
 - LIGHT FIXTURES AND OTHER APPARATUS INSTALLED IN AN ACOUSTICAL CEILING GRID SHALL BE INDEPENDENTLY SUPPORTED.
 - RECESSED LIGHTING FIXTURES INSTALLED IN FIRE RATED CEILING ASSEMBLIES SHALL BE FIRE RATED FIXTURES BEARING THE ULC FIRE RATED LABEL. FIXTURES SHALL BE INSTALLED IN ACCORDANCE WITH THE ULC FIRE RESISTANCE DIRECTORY, AND SHALL INCLUDE A FIRE RATED ENCLOSURE INSTALLED OVER THE FIXTURE THAT MEETS THE REQUIREMENTS OF THE ULC FIRE RESISTANCE DIRECTORY.

ELECTRICAL DRAWINGS

- RCMP OFFICE - ASHERN
- E0.1 ELECTRICAL SYMBOLS AND ABBREVIATIONS
 - ED2.1 MAIN FLOOR - DEMOLITION PLAN
 - ED2.2 SECOND FLOOR - DEMOLITION PLAN
 - EL2.1 MAIN FLOOR - LIGHTING PLAN
 - EL2.2 SECOND FLOOR - LIGHTING PLAN
 - EP2.1 MAIN FLOOR - POWER PLAN
 - EP2.2 SECOND FLOOR - POWER PLAN
 - E6.1 ELECTRICAL SCHEDULES





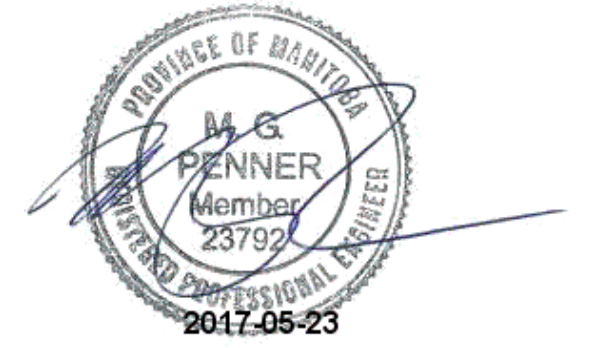
ARCHITECTURE | 49

1600 BUFFALO PLACE
WINNIPEG, MANITOBA R3T 6B8
TEL: 204-477-1260 | FAX: 204-477-6346 | architecture49.com

CONSULTANT - SUB-CONSULTANT:
es e epp siepman engineering
400 - 136 Market Avenue
Winnipeg, MB R3B 0P4
T 204 453 1080

KEYPLAN:

SEAL:



CLIENT:
 Royal Canadian Mounted Police / Gendarmerie royale du Canada
CLIENT REF. #: GGH-46-10

PROJECT:
ASHERN RCMP DETACHMENT

ASHERN, MB

DISCLAIMER: THIS DRAWING AND DESIGN IS COPYRIGHT PROTECTED WHICH SHALL NOT BE USED, REPRODUCED OR REVISED WITHOUT WRITTEN PERMISSION BY WSP CANADA INC. THE CONTRACTOR SHALL CHECK AND VERIFY ALL DIMENSIONS AND UTILITY LOCATIONS AND REPORT ALL ERRORS AND OMISSIONS PRIOR TO COMMENCING WORK. THIS DRAWING IS NOT TO BE SCALED.
COPYRIGHT:

ISSUED FOR - REVISION:

RV	DATE	DESCRIPTION
0	17-05-23	Issued for Tender

PROJECT NO.: 17042
ORIGINAL SCALE: As indicated
DESIGNED BY: ML/MM
DRAWN BY: ML/MM
CHECKED BY: JF/MP
DISCIPLINE: ELECTRICAL

IF THIS BAR IS NOT 1" LONG, ADJUST YOUR PLOTTING SCALE.
1"

TITLE:
MAIN FLOOR - DEMOLITION PLAN

SHEET NUMBER: **ED2.1**

SHEET #: 2 OF 8
ISSUE: --
DATE OF: --

RV #
0

GENERAL NOTES

A. DRAWING RECORDS OF THE EXISTING FLOOR PLANS HAVE BEEN COMPILED FROM INFORMATION SUBMITTED BY THE OWNER AND FROM SITE OBSERVATIONS AS NOTED BY THE CONSULTANT. THE ACCURACY OF THESE DRAWING RECORDS IS LIMITED TO THE EXTENT OF KNOWN CONSTRUCTION INFORMATION.

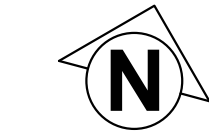
B. WIRING OF LIGHT FIXTURES TO BE MODIFIED AND EXTENDED AS REQUIRED. UTILIZE EXISTING CIRCUITS AND CONTROL UNLESS OTHERWISE NOTED.

KEY NOTES

1 THIS WALL TO BE RE-BUILT. RELOCATE ALL EXISTING ELECTRICAL AND DATA TO NEW WALLS.

1 MAIN FLOOR - DEMOLITION - ASHERN
ED2.1 SCALE: 1:50





GENERAL NOTES

- A. DRAWING RECORDS OF THE EXISTING FLOOR PLANS HAVE BEEN COMPILED FROM INFORMATION SUBMITTED BY THE OWNER AND FROM SITE OBSERVATIONS AS NOTED BY THE CONSULTANT. THE ACCURACY OF THESE DRAWING RECORDS IS LIMITED TO THE EXTENT OF KNOWN CONSTRUCTION INFORMATION.
- B. WIRING OF LIGHT FIXTURES TO BE MODIFIED AND EXTENDED AS REQUIRED. UTILIZE EXISTING CIRCUITS AND CONTROL UNLESS OTHERWISE NOTED.

CONSULTANT - SUBCONSULTANT:

epp siepman engineering
400 - 136 Market Avenue
Winnipeg, MB R3B 0P4
T 204 453 1080

KEYPLAN:

SEAL:



CLIENT:



CLIENT REF. #: GGH-46-10

PROJECT:

ASHERN RCMP DETACHMENT

ASHERN, MB

DISCLAIMER: THIS DRAWING AND DESIGN IS COPYRIGHT PROTECTED WHICH SHALL NOT BE USED, REPRODUCED OR REVISED WITHOUT WRITTEN PERMISSION BY WSP CANADA INC. THE CONTRACTOR SHALL CHECK AND VERIFY ALL DIMENSIONS AND UTILITY LOCATIONS AND REPORT ALL ERRORS AND OMISSIONS PRIOR TO COMMENCING WORK. THIS DRAWING IS NOT TO BE SCALED.

COPYRIGHT:

ISSUED FOR - REVISION:

RV	DATE	DESCRIPTION
0	17-05-23	Issued for Tender

PROJECT NO. 17042	IF THIS BAR IS NOT 1" LONG, ADJUST YOUR PLOTTING SCALE.
ORIGINAL SCALE: As indicated	
DESIGNED BY: ML/MM	
DRAWN BY: ML/MM	
CHECKED BY: JF/MP	1"

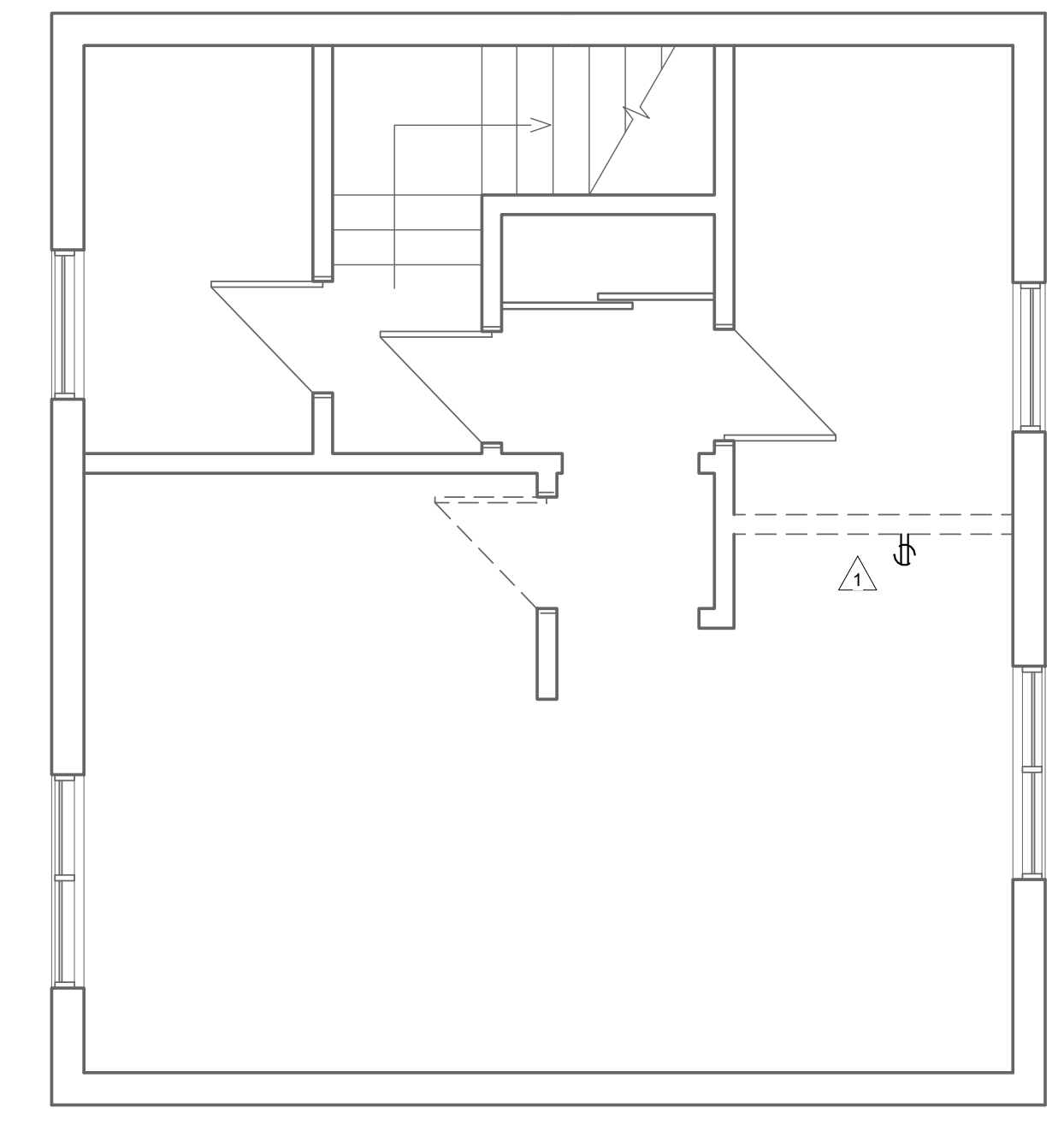
DISCIPLINE: ELECTRICAL

TITLE:
SECOND FLOOR - DEMOLITION PLAN

SHEET NUMBER:
ED2.2

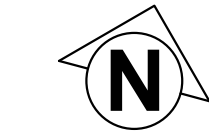
SHEET #: 3 OF 8
ISSUE: --
DATE OF: --

RV #
0



1 SECOND FLOOR - DEMOLITION - ASHERN
ED2.2 SCALE: 1 : 50





CONSULTANT - SUB-CONSULTANT:



400 - 136 Market Avenue
Winnipeg, MB R3B 0P4
T 204 453 1080

KEYPLAN:

SEAL:



CLIENT:



CLIENT REF. #: CGH-46-10

PROJECT:

ASHERN RCMP DETACHMENT

ASHERN, MB

DISCLAIMER: THIS DRAWING AND DESIGN IS COPYRIGHT PROTECTED WHICH SHALL NOT BE USED, REPRODUCED OR REVISED WITHOUT WRITTEN PERMISSION BY WSP CANADA INC. THE CONTRACTOR SHALL CHECK AND VERIFY ALL DIMENSIONS AND UTILITY LOCATIONS AND REPORT ALL ERRORS AND OMISSIONS PRIOR TO COMMENCING WORK. THIS DRAWING IS NOT TO BE SCALED.

ISSUED FOR - REVISION:

RV	DATE	DESCRIPTION
0	17-05-23	Issued for Tender

PROJECT NO.	17042	IF THIS BAR IS NOT 1" LONG, ADJUST YOUR PLOTTING SCALE.
ORIGINAL SCALE:	As indicated	
DESIGNED BY:	ML/MM	
DRAWN BY:	ML/MM	
CHECKED BY:	JF/MP	

ELECTRICAL

MAIN FLOOR - LIGHTING PLAN

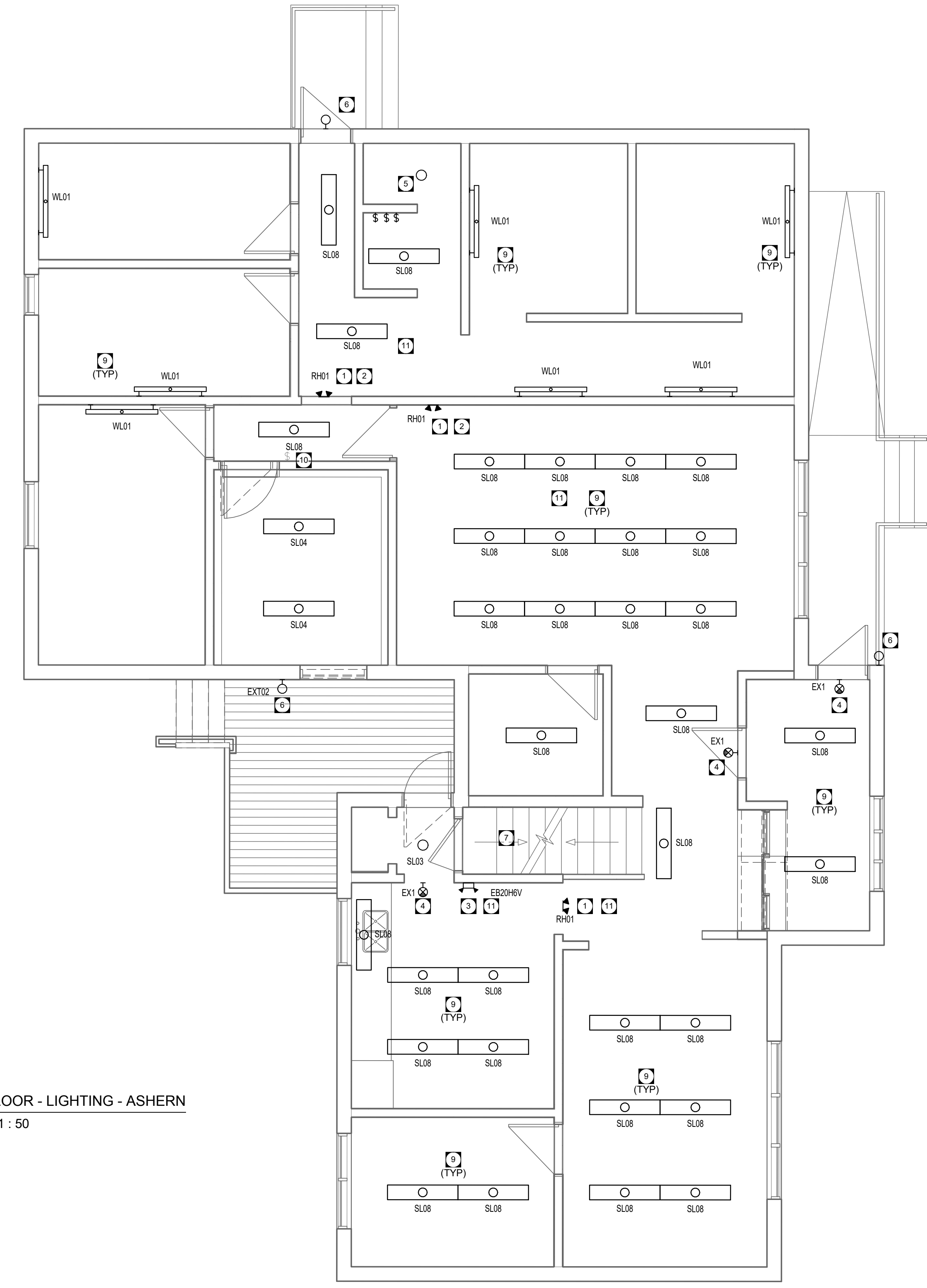
SHEET NUMBER:	EL2.1
SHEET #:	4 OF 8
ISSUE:	--
DATE OF:	0

GENERAL NOTES

- A. WHERE NEW TOGGLE SWITCHES, OR DIMMER CONTROLS ARE ADJACENT EACH OTHER, PROVIDE GANGED SWITCHING TO ACCOMMODATE TOTAL NUMBER OF SWITCHES, UNLESS NOTED OTHERWISE.
- B. ALL RECESSED LIGHTING FIXTURES IN LAY-IN CEILINGS SHALL BE INSTALLED WITH 6' LONG FLEXIBLE METAL CONDUIT.
- C. ALL MOUNTING HEIGHTS FOR LUMINAIRES ARE TO THE BOTTOM OF THE LUMINAIRE UNLESS NOTED OTHERWISE.
- D. REFER TO ARCHITECTURAL ELEVATIONS FOR MOUNTING HEIGHTS OF EXTERIOR OR INTERIOR LUMINAIRES.
- E. WIRING OF LIGHT FIXTURES TO BE MODIFIED AND EXTENDED AS REQUIRED. UTILIZE EXISTING CIRCUITS AND CONTROL UNLESS OTHERWISE NOTED.

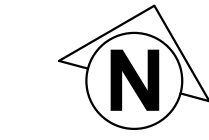
KEY NOTES

- 1 ALL EMERGENCY REMOTE HEAD FIXTURES TO BE WIRED AND CONNECTED TO BATTERY BANK IN MECHANICAL ROOM.
- 2 REMOVE AND REPLACE ALL EXISTING EMERGENCY LIGHTING REMOTE HEADS.
- 3 REMOVE AND REPLACE BATTERY BANK.
- 4 REMOVE AND REPLACE EXIT SIGNS WITH PICTOGRAM STYLE EXIT SIGNS.
- 5 REMOVE EXISTING LAMP AND REPLACE WITH A19 LED LAMP WITH MEDIUM BASE.
- 6 REMOVE AND REPLACE WALL LIGHT FIXTURES. UTILIZE EXISTING CONTROL.
- 7 REMOVE AND REPLACE FOLLOWING FIXTURES IN BASEMENT:
- SIX 4' FLUORESCENT FIXTURES WITH RL08 FIXTURES
- TWO LAMPS WITH LAMPS WITH A19 LED LAMP WITH MEDIUM BASE IN BASEMENT
- ONE REMOTE HEAD
- 8 LIGHT FIXTURE IS LOCATED ON DETACHED GARAGE.
- 9 CIRCUIT NEW LIGHT FIXTURES TO EXISTING POWER AND CONTROL.
- 10 RELOCATE SWITCH TO OUTSIDE OF ROOM.
- 11 CONNECT LIGHTING CIRCUITS THIS AREA TO ZONE SENSING RELAY FOR CORRESPONDING EMERGENCY LIGHTING BATTERY UNIT.



1 MAIN FLOOR - LIGHTING - ASHERN
EL2.1 SCALE: 1 : 50





CONSULTANT - SUB-CONSULTANT:



400 - 136 Market Avenue
Winnipeg, MB R3B 0P4
T 204 453 1080

KEYPLAN:

SEAL:



CLIENT:



CLIENT REF. #: CGH-46-10

PROJECT:

ASHERN RCMP DETACHMENT

ASHERN, MB

DISCLAIMER: THIS DRAWING AND DESIGN IS COPYRIGHT PROTECTED WHICH SHALL NOT BE USED, REPRODUCED OR REVISED WITHOUT WRITTEN PERMISSION BY WSP CANADA INC. THE CONTRACTOR SHALL CHECK AND VERIFY ALL DIMENSIONS AND UTILITY LOCATIONS AND REPORT ALL ERRORS AND OMISSIONS PRIOR TO COMMENCING WORK. THIS DRAWING IS NOT TO BE SCALED.

ISSUED FOR - REVISION:

RV	DATE	DESCRIPTION
0	17-05-23	Issued for Tender

PROJECT NO. 17042	IF THIS BAR IS NOT 1" LONG, ADJUST YOUR PLOTTING SCALE.
ORIGINAL SCALE: As indicated	
DESIGNED BY: ML/MM	
DRAWN BY: ML/MM	
CHECKED BY: JF/MP	1"
DISCIPLINE: ELECTRICAL	

TITLE:
SECOND FLOOR - LIGHTING PLAN

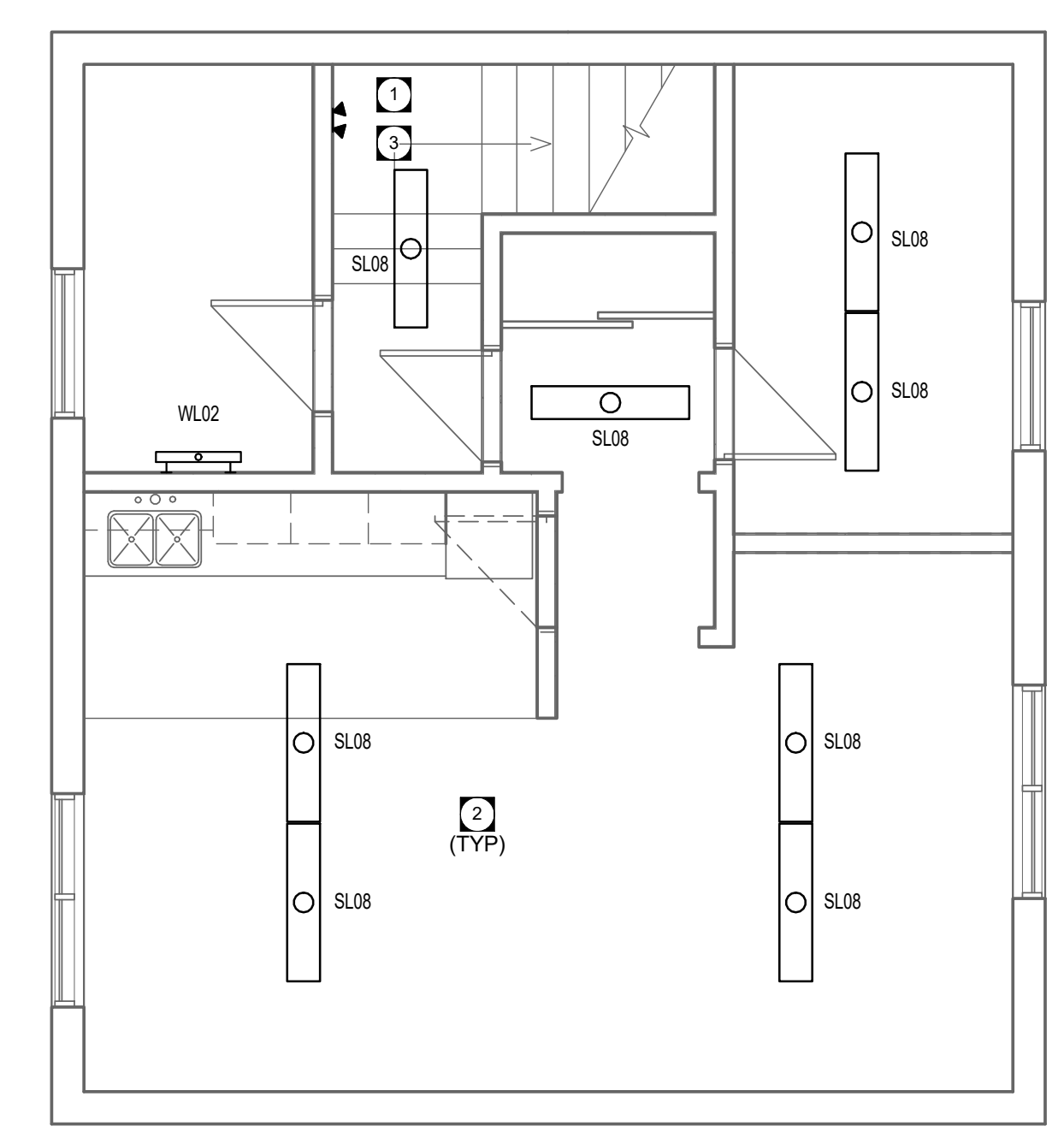
SHEET NUMBER: EL2.2	SHEET #: 5 OF 8	RV #: 0
ISSUE: --	DATE OF: --	

GENERAL NOTES

- A. WHERE NEW TOGGLE SWITCHES, OR DIMMER CONTROLS ARE ADJACENT EACH OTHER, PROVIDE GANGED SWITCHING TO ACCOMMODATE TOTAL NUMBER OF SWITCHES, UNLESS NOTED OTHERWISE.
- B. ALL RECESSED LIGHTING FIXTURES IN LAY-IN CEILINGS SHALL BE INSTALLED WITH 6' LONG FLEXIBLE METAL CONDUIT.
- C. ALL MOUNTING HEIGHTS FOR LUMINAIRES ARE TO THE BOTTOM OF THE LUMINAIRE UNLESS NOTED OTHERWISE.
- D. REFER TO ARCHITECTURAL ELEVATIONS FOR MOUNTING HEIGHTS OF EXTERIOR OR INTERIOR LUMINAIRES.
- E. WIRING OF LIGHT FIXTURES TO BE MODIFIED AND EXTENDED AS REQUIRED, UTILIZE EXISTING CIRCUITS AND CONTROL UNLESS OTHERWISE NOTED.

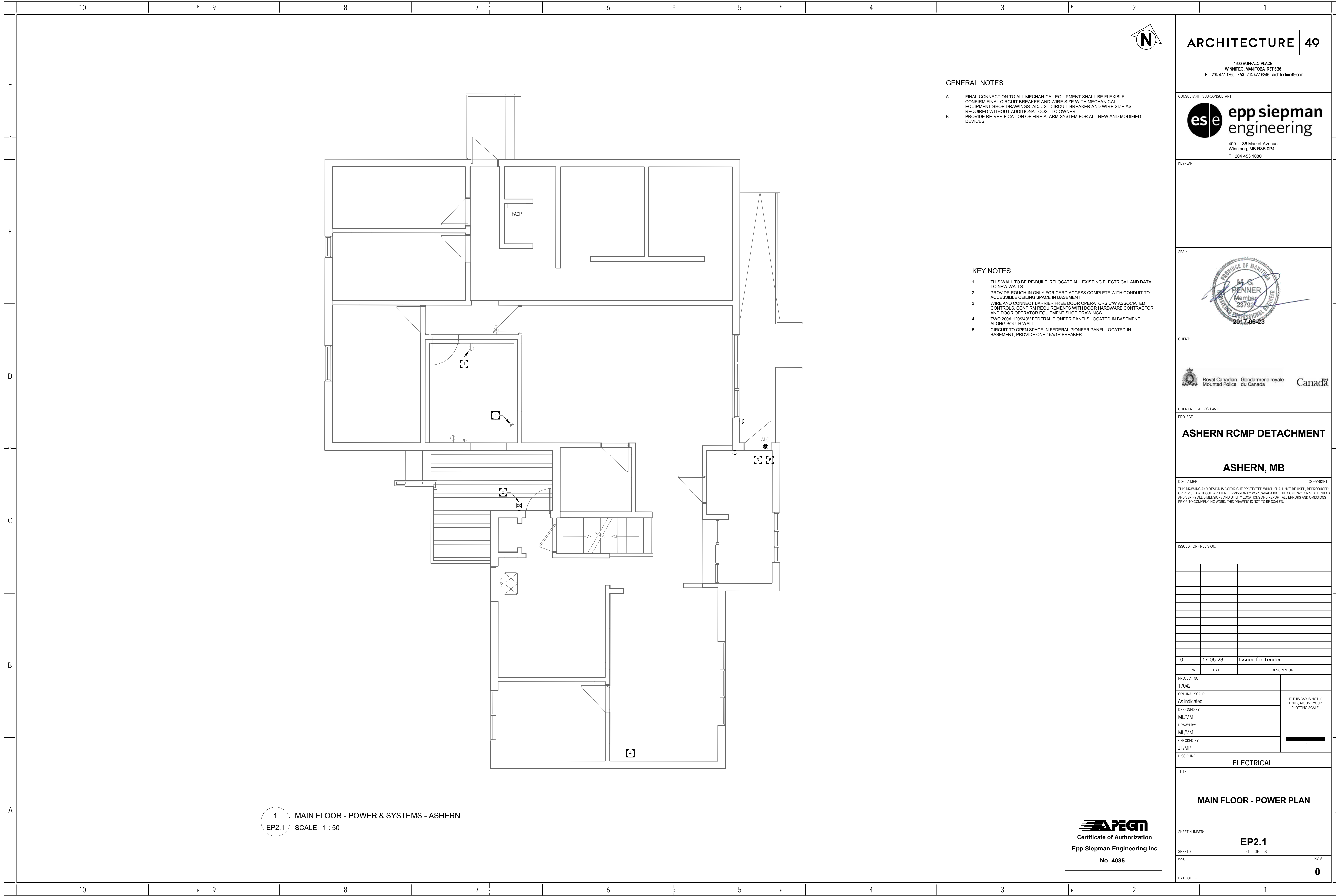
KEY NOTES

- 1 ALL EMERGENCY REMOTE HEAD FIXTURES TO BE WIRED AND CONNECTED TO BATTERY BANK IN MECHANICAL ROOM.
- 2 CIRCUIT NEW LIGHT FIXTURES TO EXISTING POWER AND CONTROL.
- 3 CONNECT LIGHTING CIRCUITS THIS AREA TO ZONE SENSING RELAY FOR CORRESPONDING EMERGENCY LIGHTING BATTERY UNIT.



1 SECOND FLOOR - LIGHTING - ASHERN
EL2.2 SCALE: 1 : 50





CONSULTANT - SUB-CONSULTANT:



400 - 136 Market Avenue
Winnipeg, MB R3B 0P4
T 204 453 1080

KEYPLAN:



CLIENT:



Royal Canadian Mounted Police / Gendarmerie royale du Canada

CLIENT REF. #: CGH-46-10

PROJECT:

ASHERN RCMP DETACHMENT

ASHERN, MB

DISCLAIMER: THIS DRAWING AND DESIGN IS COPYRIGHT PROTECTED WHICH SHALL NOT BE USED, REPRODUCED OR REVISED WITHOUT WRITTEN PERMISSION BY WSP CANADA INC. THE CONTRACTOR SHALL CHECK AND VERIFY ALL DIMENSIONS AND UTILITY LOCATIONS AND REPORT ALL ERRORS AND OMISSIONS PRIOR TO COMMENCING WORK. THIS DRAWING IS NOT TO BE SCALED.

ISSUED FOR - REVISION:

RV	DATE	DESCRIPTION
0	17-05-23	Issued for Tender

PROJECT NO.	17042
ORIGINAL SCALE:	As indicated
DESIGNED BY:	ML/MM
DRAWN BY:	ML/MM
CHECKED BY:	JF/MP
DISCIPLINE:	ELECTRICAL

TITLE:	MAIN FLOOR - POWER PLAN	
SHEET NUMBER:	EP2.1	
SHEET #:	6	OF 8
ISSUE:	--	RV #
DATE OF:	--	0

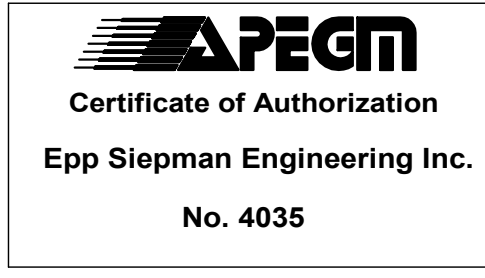
GENERAL NOTES

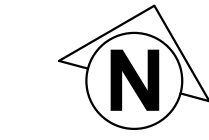
- A. FINAL CONNECTION TO ALL MECHANICAL EQUIPMENT SHALL BE FLEXIBLE. CONFIRM FINAL CIRCUIT BREAKER AND WIRE SIZE WITH MECHANICAL EQUIPMENT SHOP DRAWINGS. ADJUST CIRCUIT BREAKER AND WIRE SIZE AS REQUIRED WITHOUT ADDITIONAL COST TO OWNER.
- B. PROVIDE RE-VERIFICATION OF FIRE ALARM SYSTEM FOR ALL NEW AND MODIFIED DEVICES.

KEY NOTES

- 1 THIS WALL TO BE RE-BUILT. RELOCATE ALL EXISTING ELECTRICAL AND DATA TO NEW WALLS.
- 2 PROVIDE ROUGH IN ONLY FOR CARD ACCESS COMPLETE WITH CONDUIT TO ACCESSIBLE CEILING SPACE IN BASEMENT.
- 3 WIRE AND CONNECT BARRIER FREE DOOR OPERATORS CAN ASSOCIATED CONTROLS. CONFIRM REQUIREMENTS WITH DOOR HARDWARE CONTRACTOR AND DOOR OPERATOR EQUIPMENT SHOP DRAWINGS.
- 4 TWO 200A, 120/240V FEDERAL PIONEER PANELS LOCATED IN BASEMENT ALONG SOUTH WALL.
- 5 CIRCUIT TO OPEN SPACE IN FEDERAL PIONEER PANEL LOCATED IN BASEMENT, PROVIDE ONE 15A/1P BREAKER.

1 MAIN FLOOR - POWER & SYSTEMS - ASHERN
EP2.1 SCALE: 1 : 50





GENERAL NOTES

- A. FINAL CONNECTION TO ALL MECHANICAL EQUIPMENT SHALL BE FLEXIBLE. CONFIRM FINAL CIRCUIT BREAKER AND WIRE SIZE WITH MECHANICAL EQUIPMENT SHOP DRAWINGS. ADJUST CIRCUIT BREAKER AND WIRE SIZE AS REQUIRED WITHOUT ADDITIONAL COST TO OWNER.
- B. PROVIDE RE-VERIFICATION OF FIRE ALARM SYSTEM FOR ALL NEW AND MODIFIED DEVICES.

CONSULTANT - SUBCONSULTANT:

epp siepman engineering
400 - 136 Market Avenue
Winnipeg, MB R3B 0P4
T 204 453 1080

KEYPLAN:

SEAL:



CLIENT:



CLIENT REF. #: GGH-46-10

PROJECT:

ASHERN RCMP DETACHMENT

ASHERN, MB

DISCLAIMER: THIS DRAWING AND DESIGN IS COPYRIGHT PROTECTED WHICH SHALL NOT BE USED, REPRODUCED OR REVISED WITHOUT WRITTEN PERMISSION BY WSP CANADA INC. THE CONTRACTOR SHALL CHECK AND VERIFY ALL DIMENSIONS AND UTILITY LOCATIONS AND REPORT ALL ERRORS AND OMISSIONS PRIOR TO COMMENCING WORK. THIS DRAWING IS NOT TO BE SCALED.

ISSUED FOR - REVISION:

RV	DATE	DESCRIPTION
0	17-05-23	Issued for Tender

PROJECT NO. 17042	IF THIS BAR IS NOT 1" LONG, ADJUST YOUR PLOTTING SCALE.
ORIGINAL SCALE: As indicated	
DESIGNED BY: ML/MM	
DRAWN BY: ML/MM	
CHECKED BY: JF/MP	1"

DISCIPLINE: ELECTRICAL

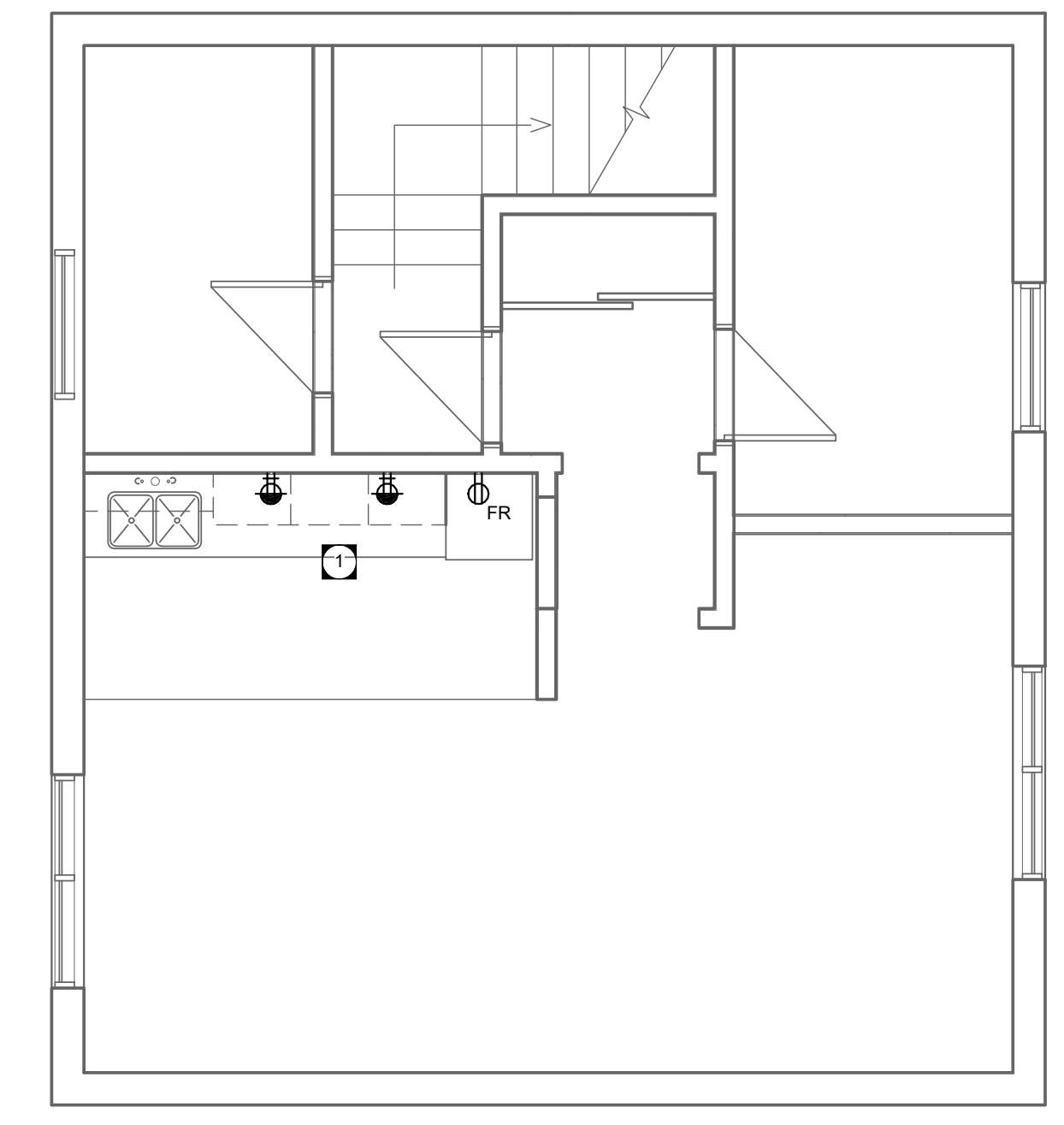
TITLE:
SECOND FLOOR - POWER PLAN

SHEET NUMBER:
EP2.2

SHEET #: 7 OF 8

ISSUE: --
DATE OF: --

RV #
0



1 SECOND FLOOR - POWER & SYSTEMS - ASHERN
EP2.2 SCALE: 1 : 50



CONSULTANT - SUB-CONSULTANT:



400 - 136 Market Avenue
Winnipeg, MB R3B 0P4
T 204 453 1080

KEYPLAN:

SEAL:



CLIENT:



CLIENT REF. #: CGH-46-10

PROJECT:

ASHERN RCMP DETACHMENT

ASHERN, MB

DISCLAIMER: THIS DRAWING AND DESIGN IS COPYRIGHT PROTECTED WHICH SHALL NOT BE USED, REPRODUCED OR REVISED WITHOUT WRITTEN PERMISSION BY WSP CANADA INC. THE CONTRACTOR SHALL CHECK AND VERIFY ALL DIMENSIONS AND UTILITY LOCATIONS AND REPORT ALL ERRORS AND OMISSIONS PRIOR TO COMMENCING WORK. THIS DRAWING IS NOT TO BE SCALED.

ISSUED FOR - REVISION:

REV.	DATE	DESCRIPTION
0	17-05-23	Issued for Tender

PROJECT NO. 17042	IF THIS BAR IS NOT 1" LONG, ADJUST YOUR PLOTTING SCALE.
ORIGINAL SCALE: 1 : 96	
DESIGNED BY: ML/MM	
DRAWN BY: ML/MM	
CHECKED BY: JF/MP	1"

DISCIPLINE: ELECTRICAL

TITLE:
ELECTRICAL SCHEDULES

SHEET NUMBER:
E6.1

SHEET #:
8 OF 8

ISSUE:
--

DATE OF: --

RV #:
0

LIGHTING FIXTURE SCHEDULE

TYPE	Description	LENS-LOUVER	MOUNTING	LAMP	BALLAST / DRIVER	VOLT	WATT	MFR	CATALOG SERIES	NOTE
EX1	LED UNIVERSAL MOUNT, UNIVERSAL VOLTAGE, UNIVERSAL SINGLE/DOUBLE FACE PICTOGRAM STYLE EXIT SIGN WITH WHITE STEEL HOUSING AND CHEVRON ARROWS AS SHOWN ON PLANS.	---	UNIVERSAL	< 3W LED MIN 50000 HR	---	120 V	3 W	AIMLITE	RPST-U-M	
EXT02	EXTERIOR LED WALL LIGHT FIXTURE		WALL	5000 LUMENS 20 LED 4000K	LED DRIVER	120 V	47 W	LITHONIA	DSXW1 LED-20C-700-40K-T3 M-MVOLT-DDBXD	
RH01	DOUBLE HEAD EMERGENCY LIGHTING REMOTE, DIE CAST ALL METAL CONSTRUCTION, WHITE		WALL	2 x 6W LED 50000HR 540 LUMENS	---	12 V	12 W	AIMLITE	RMQVD	
SL01	A19 LED LAMP WITH MEDIUM BASE			LED 850 LUMEN 4000K		120 V	10 W	LED LAMP	LED LAMP	
SL03	7" ROUND LED FLUSH MOUNT		SURFACE	660 LUMENS LED 4000K 50,000 HR	LED DRIVER	120 V	9 W	LITHONIA	FMML-7-8-40	
SL04	254mm x 1220mm (10" X 4') HIGH ABUSE LED FIXTURE WITH TAMPER RESISTANT HARDWARE	0.125" IMPACT RESISTANT CLEAR PRISMATIC POLYCARBONATE DIFFUSER	SURFACE	5000 LUMENS LED 82+CRI 4000K	LED DRIVER	120 V	50 W	NEWSTAR	51HBR-L2-42-1-B-12-AH	
SL08	254mm x 1220mm (10" X 4') LOW PROFILE CURVED BASKET LED WRAP AROUND	CURVED PRISMATIC DIFFUSER	SURFACE	4600 LUMENS LED 82+CRI 4000K	0-10 VDC DIMMABLE LED DRIVER	120 V	41 W	LITHONIA	LBL4LP840	
WL01	CORNER LUMINAIRE NON-CLAMSHELL FOR MAX SECURITY USE COMPLETE WITH NIGHTLIGHT		SURFACE WALL	5000 LUMENS LED 82+CRI 4000K	LED DRIVER	120 V	50 W	NEWSTAR	554-A-L2-LED40-1-A-12-LN	

GENERAL NOTES:
A. EMERGENCY LIGHTING MODEL NUMBERS ARE BASED ON AIMLITE PRODUCT LINE. EMERGLITE, BEGHELLIE, AND LUMACELL MEETING PERFORMANCE SPECIFICATIONS ARE APPROVED EQUAL.
B. FIXTURES ABOVE ARE A BASIS OF DESIGN, ALTERNATES MUST BE SUBMITTED AS A SUBSTITUTION FOR APPROVAL PRIOR TO BID SUBMISSION.

SCHEDULE NOTES:
1. N/A

EMERGENCY BATTERY BANK SCHEDULE

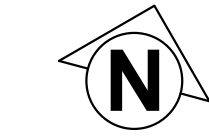
ID MARK	TYPE	DESCRIPTION	LAMP	AC VOLT	DC VOLT	WATT	MFR	CATALOG SERIES	NOTE
BU-54	EB20H6V	BATTERY BANK, STEEL CABINET COMPLETE WITH INTEGRAL VOLTAGE SENSING RELAYS, DOUBLE EMERGENCY LIGHTING HEADS AND DC TERMINAL BLOCKS.	2 x 6W LED 50000HR 540 LUMENS	120 V	12 V	200 W	AIMLITE	EBST	

GENERAL NOTES:
A. EMERGENCY LIGHTING MODEL NUMBERS ARE BASED ON AIMLITE PRODUCT LINE. EMERGLITE, BEGHELLIE, AND LUMACELL MEETING PERFORMANCE SPECIFICATIONS ARE APPROVED EQUAL.
B. WHERE "APPROVED EQUAL" IS LISTED IN THE MANUFACTURER COLUMN, FIXTURES MUST BE SUBMITTED AS A SUBSTITUTION FOR APPROVAL PRIOR TO BID SUBMISSION.

SCHEDULE NOTES:
1. N/A



APEGM
Certificate of Authorization
Epp Siepman Engineering Inc.
No. 4035



400 - 136 Market Avenue
Winnipeg, MB R3B 0P4
T 204 453 1080

KEYPLAN:

SCALE:



CLIENT:



CLIENT REF. #: CGH-46-10

PROJECT:
ASHERN RCMP DETACHMENT

ASHERN, MB

DISCLAIMER: THIS DRAWING AND DESIGN IS COPYRIGHT PROTECTED WHICH SHALL NOT BE USED, REPRODUCED OR REVISED WITHOUT WRITTEN PERMISSION BY WSP CANADA INC. THE CONTRACTOR SHALL CHECK AND VERIFY ALL DIMENSIONS AND UTILITY LOCATIONS AND REPORT ALL ERRORS AND OMISSIONS PRIOR TO COMMENCING WORK. THIS DRAWING IS NOT TO BE SCALED.

ISSUED FOR - REVISION:

RV	DATE	DESCRIPTION
0	17-05-23	Issued for Tender

PROJECT NO. 17042	IF THIS BAR IS NOT 1" LONG, ADJUST YOUR PLOTTING SCALE.
ORIGINAL SCALE: As indicated	
DESIGNED BY: TD	1"
DRAWN BY: TD	
CHECKED BY: SD	

DISCIPLINE: **MECHANICAL**

TITLE:
MECHANICAL DEMOLITION & RENOVATION PLAN - ASHERN

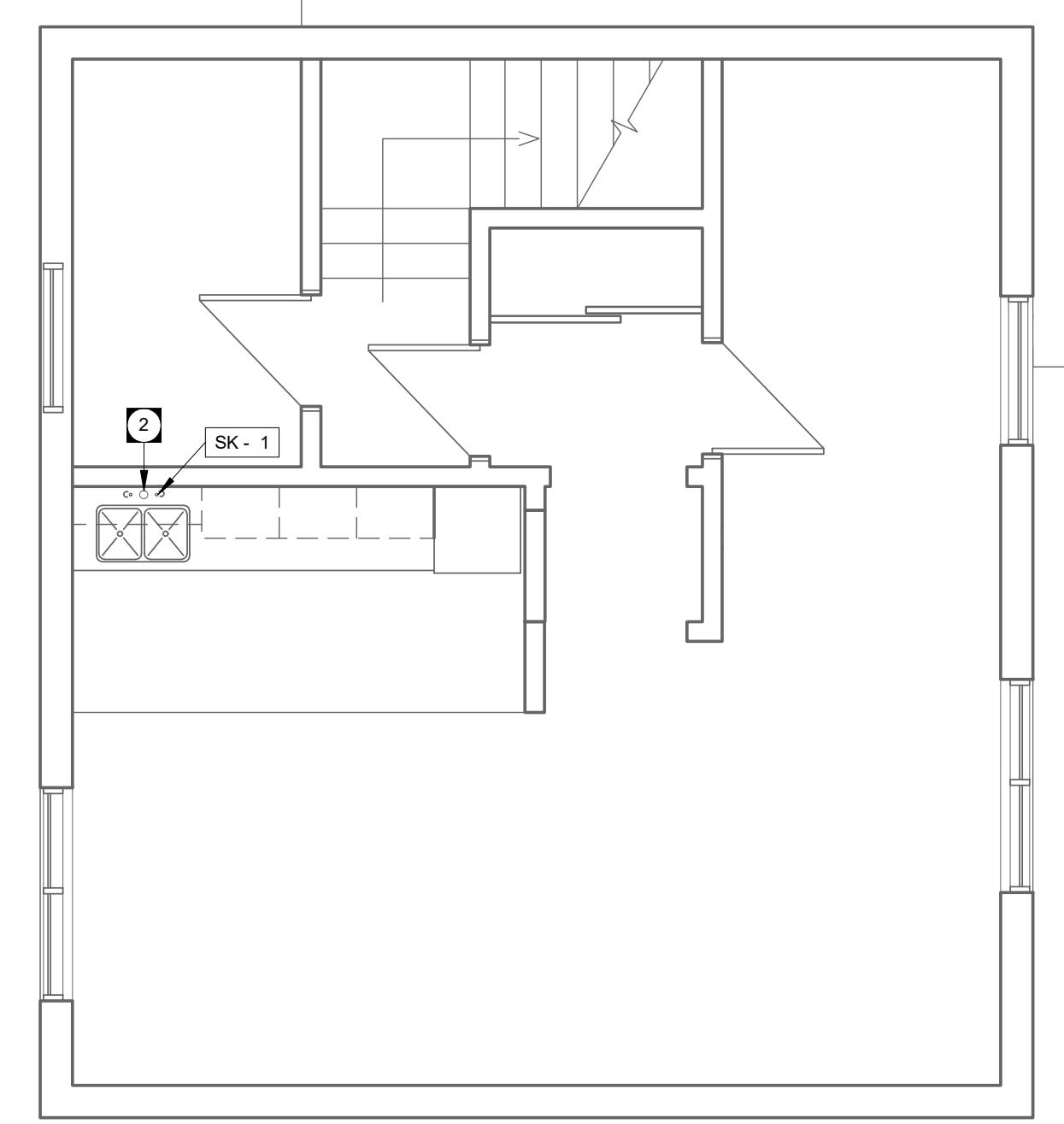
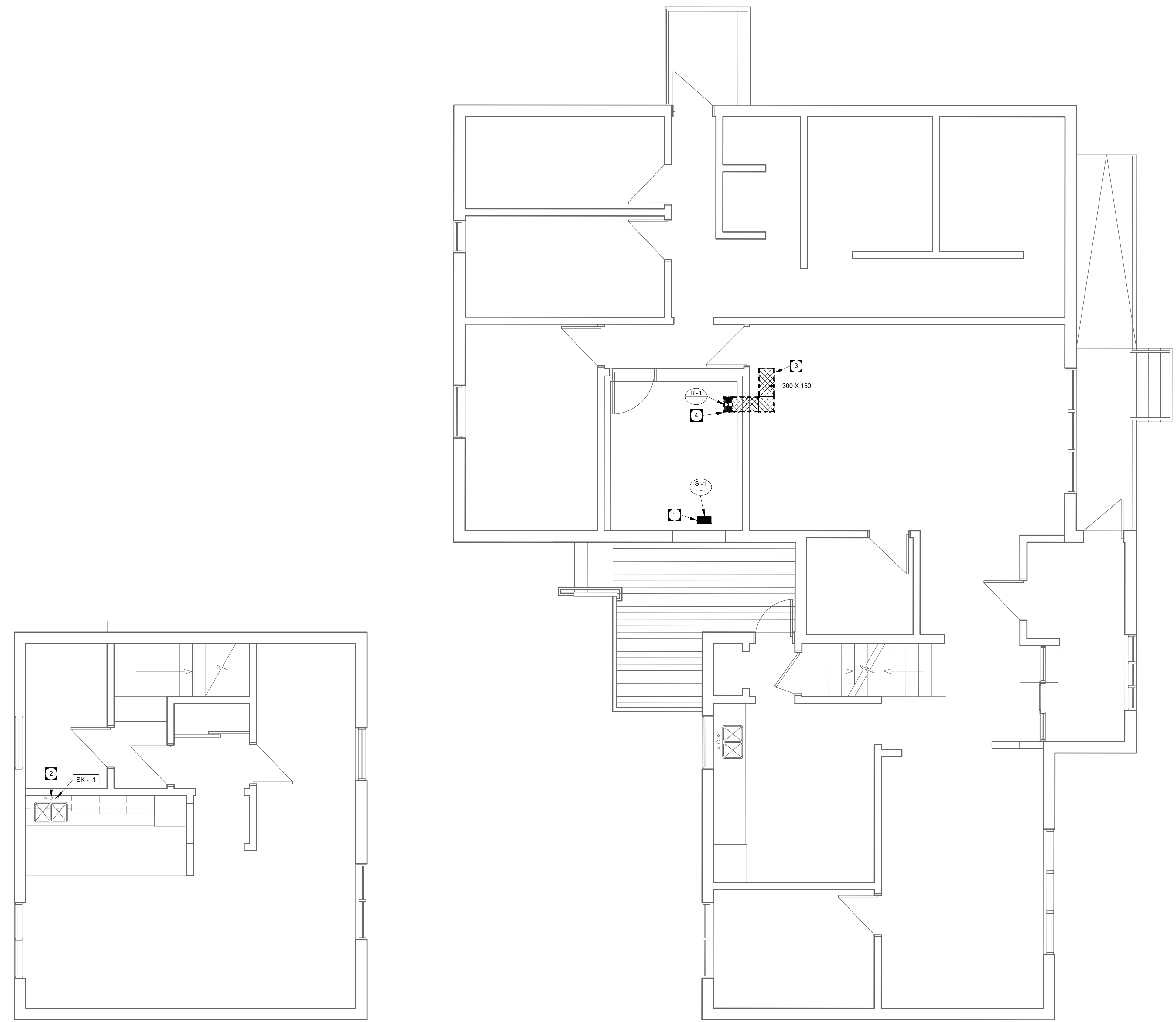
SHEET NUMBER: M2.0	OF	
SHEET #: --	OF	--
ISSUE: --	RV #	0
DATE OF: --		

MECHANICAL GENERAL NOTES

- A. CONFORM TO APPLICABLE CODE FOR DEMOLITION WORK, DUST CONTROL, PRODUCTS REQUIRING ELECTRICAL DISCONNECTION OR RECONNECTION.
- B. CONFORM TO APPLICABLE REGULATORY PROCEDURES WHEN DISCOVERING HAZARDOUS OR CONTAMINATED MATERIALS.
- C. PROTECT EXISTING MATERIALS, EQUIPMENT, AND SYSTEMS WHICH ARE NOT TO BE DEMOLISHED. PROVIDE A MINIMUM MERV 8 FILTRATION ON EXISTING INLETS AND RETURN AIR DUCTS AND SYSTEMS.
- D. CONDUCT DEMOLITION TO MINIMIZE INTERFERENCE WITH OCCUPIED BUILDING AREAS.
- E. REMOVE, CUT, AND PATCH WORK IN A MANNER TO MINIMIZE DAMAGE AND TO PROVIDE MEANS OF RESTORING SYSTEMS TO ORIGINAL CONDITION.
- F. ALL USABLE SALVAGED EQUIPMENT AND MATERIALS SHALL REMAIN THE PROPERTY OF THE OWNER UNLESS SPECIFICALLY NOTED OTHERWISE.
- G. FIRESTOP ALL MECHANICAL PENETRATIONS THROUGH FIRE-RATED FLOOR AND WALL ASSEMBLIES WHERE PIPES OR DUCTS WERE REMOVED. SEE ARCHITECTURAL DRAWINGS FOR LOCATION AND TYPE OF RATINGS.
- H. DUCT TRANSITIONS MAY NOT BE SHOWN IN DETAIL ON PLAN. REFER TO DETAILS SHEETS AND SMACNA - HVAC DUCT CONSTRUCTION STANDARDS FOR REQUIRED DUCT TRANSITIONS AND FITTINGS. ALL DUCT TAPS TO BRANCH DUCTS SHALL HAVE 45 DEGREE ENTRY FITTINGS.
- I. INSTALL FIRE DAMPERS ON ALL DUCTS PENETRATING FIRE RATED WALL ASSEMBLIES. COMPLETE WITH ACCESS DOORS. SEE STANDARD DETAIL. REFER TO ARCHITECTURAL DRAWING FOR WALL TYPES.
- J. DUCT INSULATION MATERIALS SHALL MEET SMOKE AND FLAME SPREAD REQUIREMENTS FOR PLENUM INSULATION.
- K. DUCT INSULATION SHALL FOLLOW THE SCHEDULES IN THE SPECIFICATION AS A MINIMUM REQUIREMENT. THESE REQUIREMENTS SHALL APPLY REGARDLESS OF WHETHER OR NOT DUCT INSULATION IS SHOWN ON THE DRAWINGS.
- L. WHERE DUCT INSULATION IS SHOWN ON THE DRAWINGS (EITHER WITH THE HATCHING CONVENTION OR BY MEANS OF A KEY NOTE) AND EXCEEDS THE REQUIREMENTS OF THE SCHEDULES IN THE SPECIFICATION, THE ADDITIONAL INSULATION REQUIREMENTS SHALL BE MET.
- M. ALL PIPING SHALL BE INSULATED PER THE SPECIFICATION.
- N. REFER TO ARCHITECTURAL DRAWINGS FOR THE EXACT LOCATION OF PLUMBING FIXTURES.
- O. WATER HAMMER ARRESTORS SHALL BE PROVIDED TO EACH WASHROOM AND FIXTURE GROUP.
- P. THE CONTRACTOR SHALL SIZE AND COORDINATE PLUMBING VENTING WHERE NOT SHOWN ON THE DRAWINGS. REFER TO THE DRAWINGS FOR SPECIFIC LOCATIONS AND COORDINATION REQUIREMENTS.
- P. THE INTERRUPTION OF ANY SERVICES SHALL BE COORDINATED WITH THE BUILDING OWNER AND SHALL BE KEPT TO A MINIMUM.

KEY NOTES

- 1 REMOVE EXISTING FLOOR SUPPLY GRILLE TO ALLOW FOR ROOM REFINISHING. PROVIDE NEW LOUVERED SUPPLY GRILLE WITHIN EXISTING OPENING. CONNECT GRILLE INTO DUCTWORK WITHIN CRAWLSPACE COMPLETE WITH DIRT POCKET WITH REMOVABLE PANEL.
- 2 PROVIDE NEW KITCHEN SINK WITHIN MILLWORK. CONNECT DOMESTIC HOT AND COLD PIPING INTO EXISTING PLUMBING RISER WITHIN WALL SEPARATING BATHROOM AND NEW SINK LOCATION. CONNECT NEW VENT PIPING INTO EXISTING WITHIN WALL CAVITY. CONNECT NEW SANITARY PIPING INTO EXISTING WITHIN MAIN FLOOR CEILING SPACE.
- 3 PROVIDE ACOUSTICALLY LINED RETURN DUCTWORK WITHIN CRAWLSPACE. ACOUSTIC LINING SHALL BE A MINIMUM OF 25 MM THICK. CONNECT DUCTWORK INTO EXISTING RETURN DUCTWORK AT APPROXIMATE LOCATION SHOWN. ENSURE THERE IS A MINIMUM OF TWO ELBOWS IN DUCTWORK PRIOR TO CONNECTING TO EXISTING.
- 4 PROVIDE LOUVERED RETURN GRILLE ON FLOOR. REFER TO ARCHITECTURAL FOR EXACT LOCATION. CONNECT GRILLE INTO DUCTWORK WITHIN CRAWLSPACE COMPLETE WITH DIRT POCKET WITH REMOVABLE PANEL.



2 SECOND FLOOR - MECHANICAL RENOVATION PLAN - ASHERN
M2.0 SCALE: 1:50

1 MAIN FLOOR - MECHANICAL DEMOLITION & RENOVATION PLAN - ASHERN
M2.0 SCALE: 1:50

DIFFUSER & GRILLES SCHEDULE - ASHERN			
MARK	MODEL	NOTES	
S	12x4MSSU/CORE CS4/B12	1	
R	12x4MSSU/CORE CS4/B12	1	

1. Contractor to field verify floor thickness on site prior to ordering grilles.

PLUMBING FIXTURE SCHEDULE - ASHERN									
MARK	DCW	DHW	SANITARY	VENT					
SK	1	1/2"	13 mm	1/2"	13 mm	1 1/2"	38 mm	1 1/4"	32 mm

