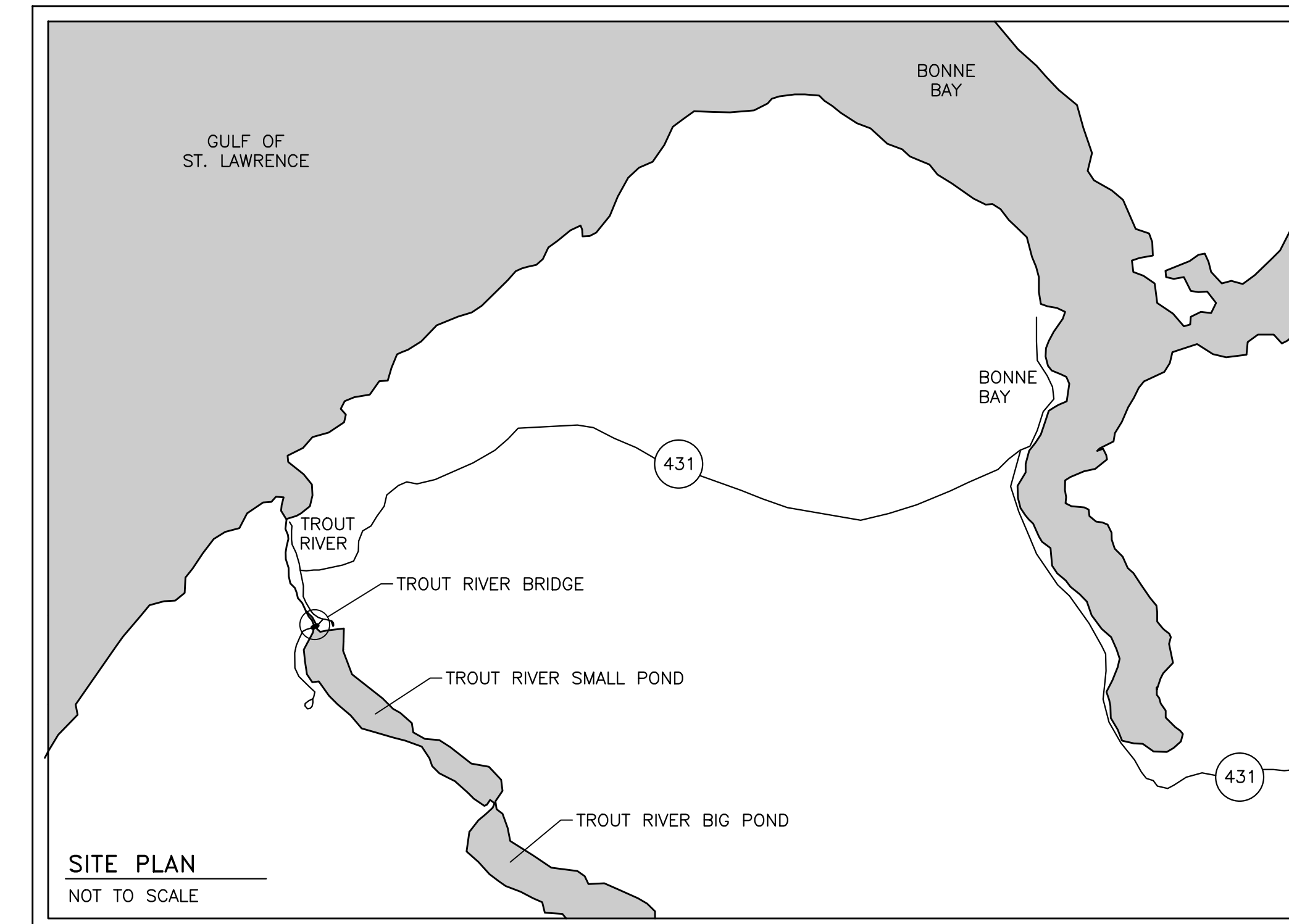
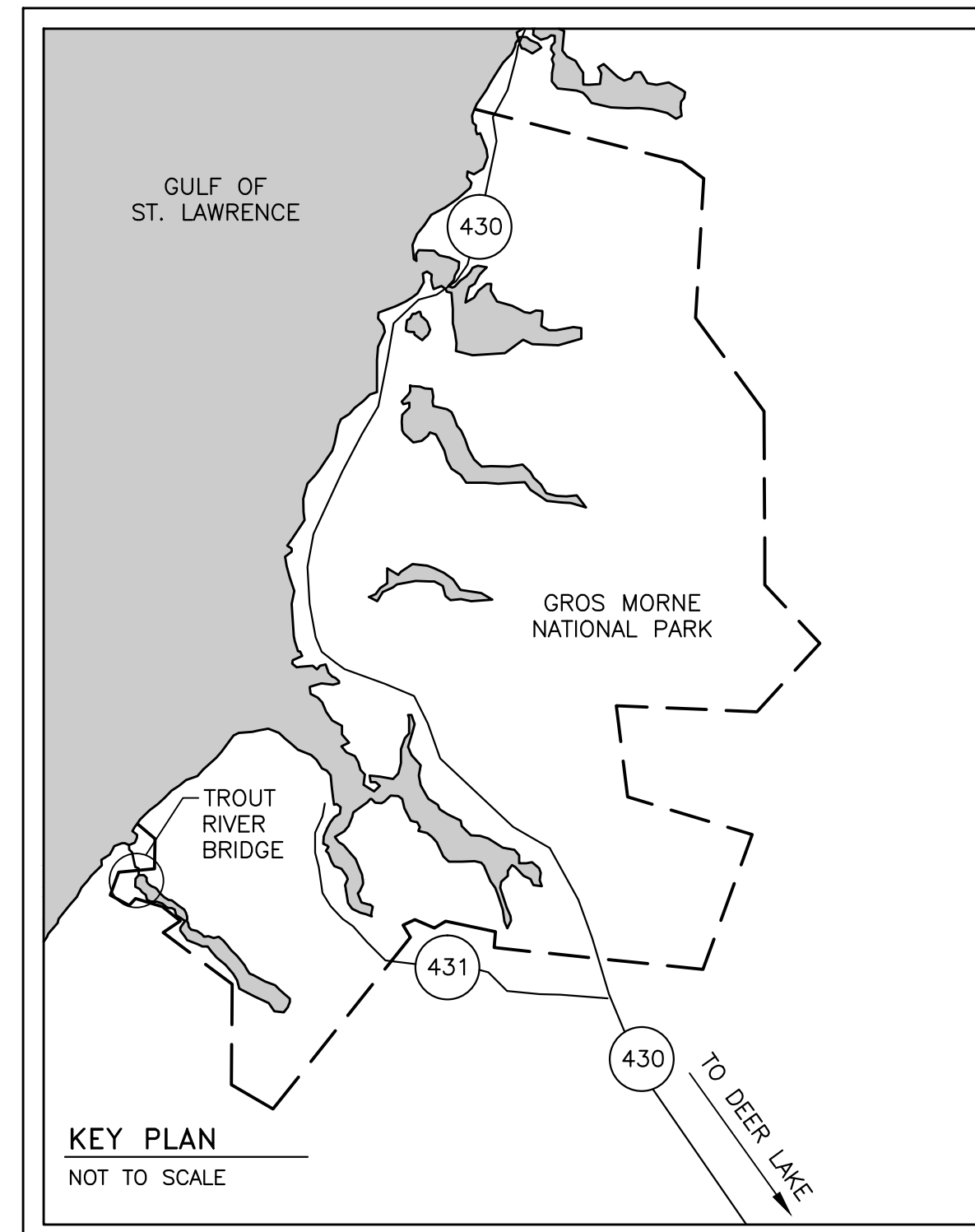


Parcs
Canada

Parks
Canada



TROUT RIVER BRIDGE REPAIRS GROS MORNE NATIONAL PARK

NEWFOUNDLAND AND LABRADOR

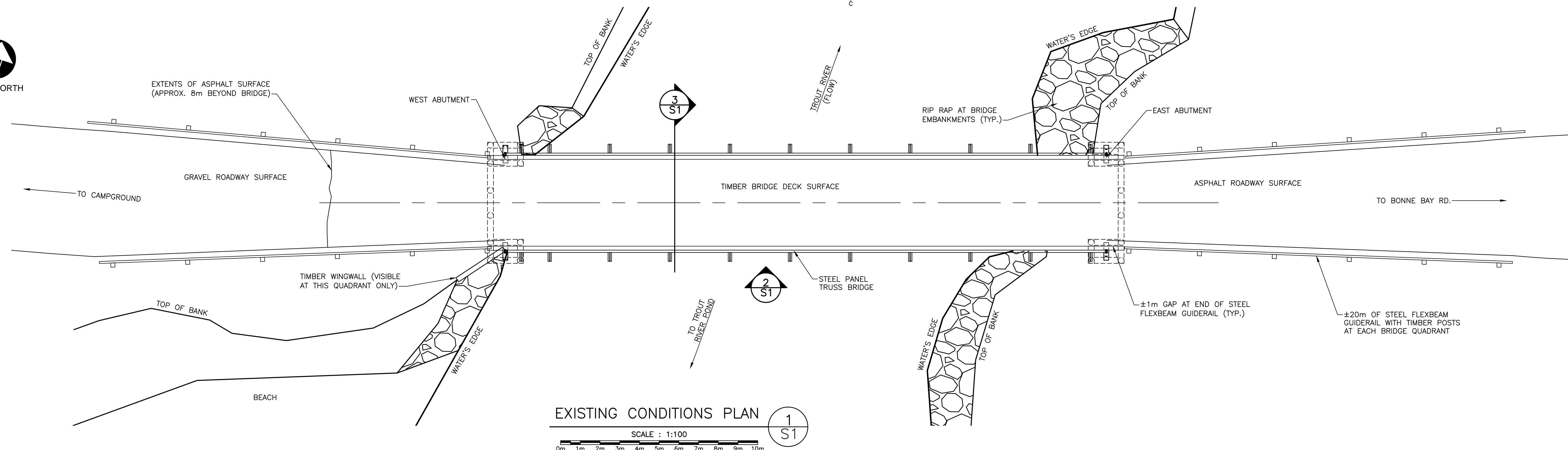
PROJECT NO. 1850

DRAWING LIST

DRAWING NO.	TITLE
S1 OF 4	EXISTING CONDITONS – GENERAL ARRANGEMENT
S2 OF 4	ABUTMENT DEMOLITION AND RECONSTRUCTION PLAN AND ELEVATION
S3 OF 4	ABUTMENT RECONSTRUCTION SECTIONS AND DETAILS
S4 OF 4	ABUTMENT RECONSTRUCTION SECTIONS AND DETAILS

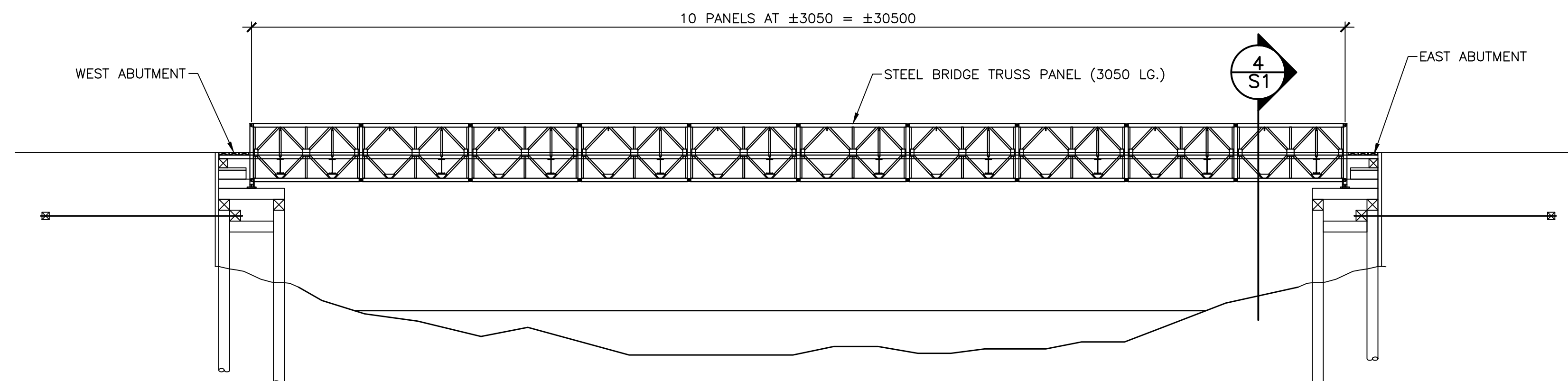


PLAN NORTH



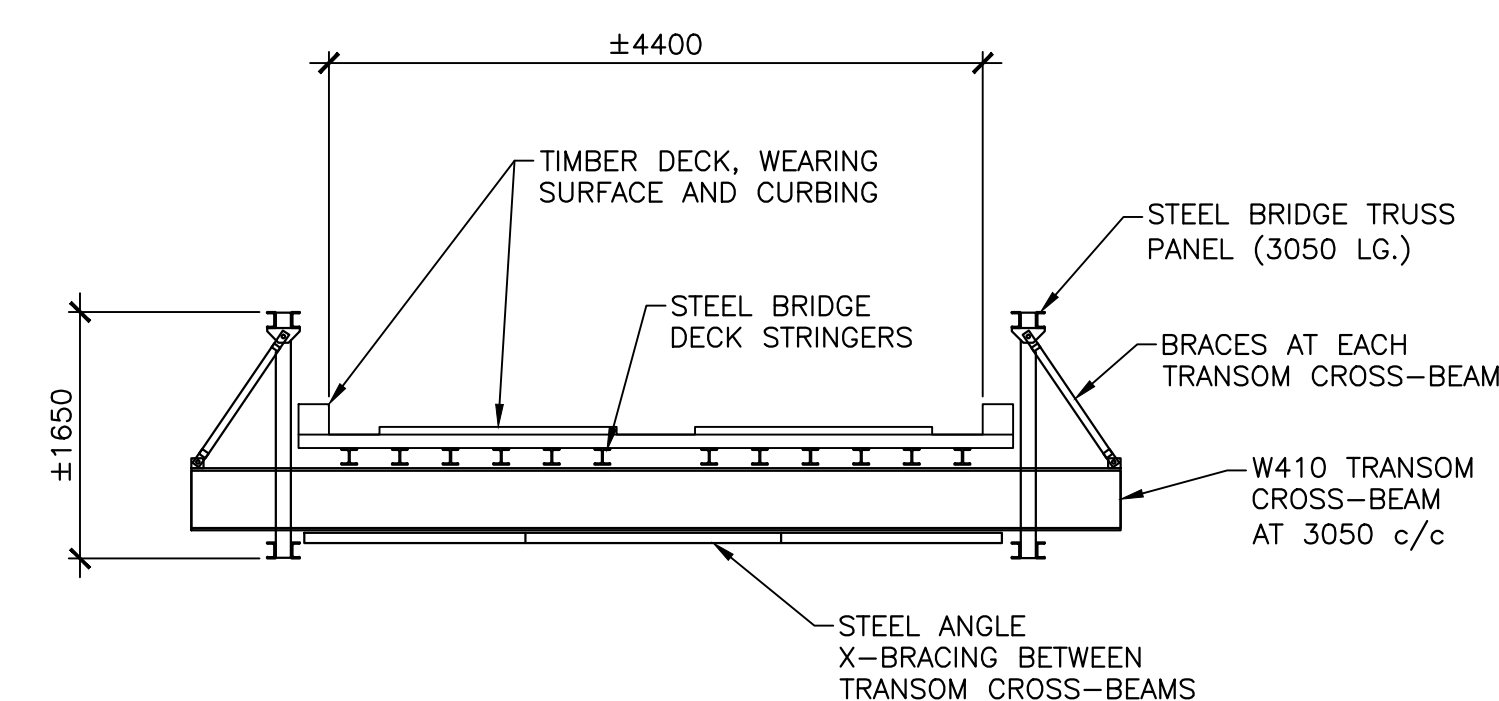
EXISTING CONDITIONS PLAN

SCALE : 1:100



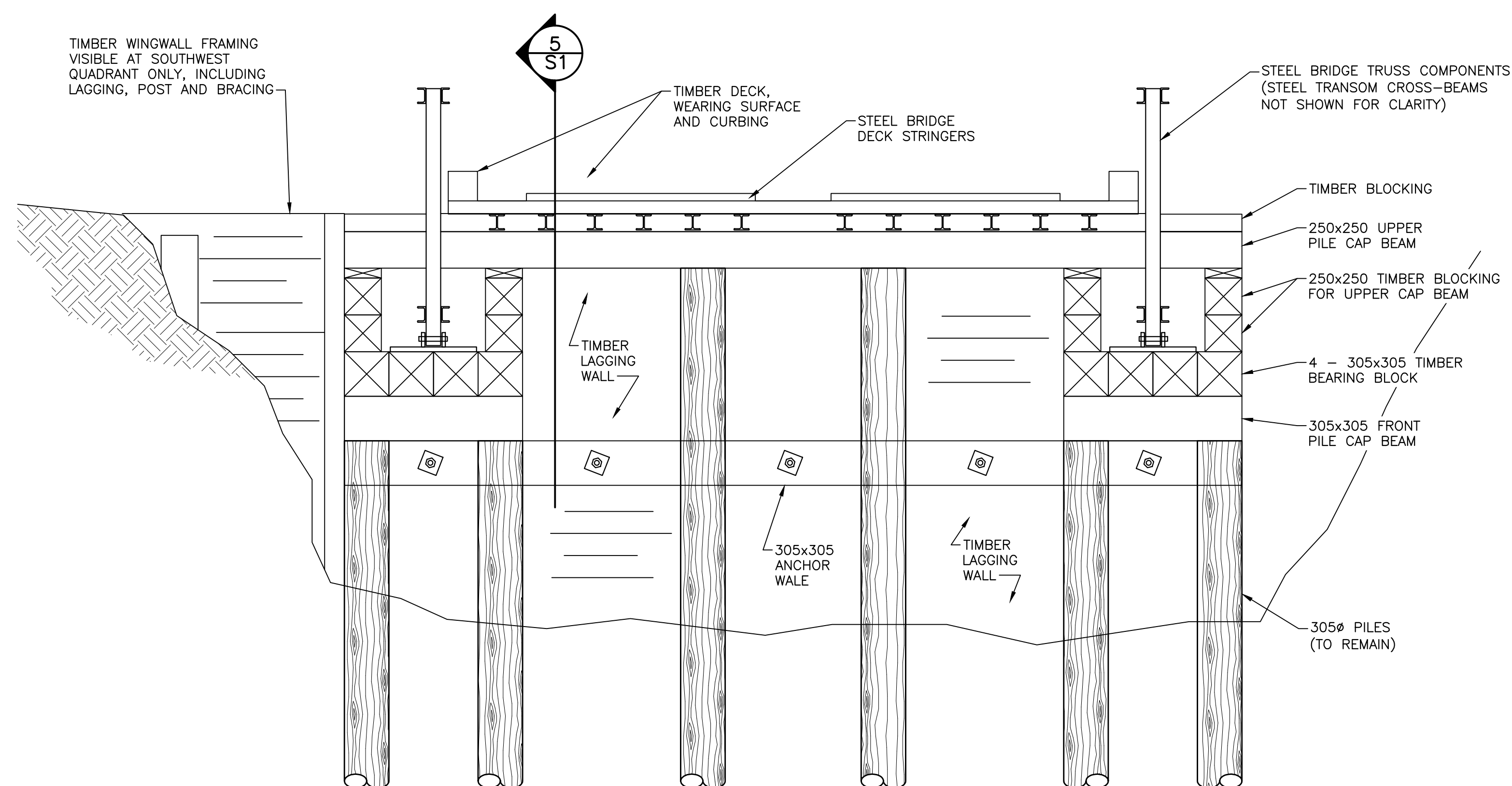
EXISTING BRIDGE PROFILE

SCALE : 1:100



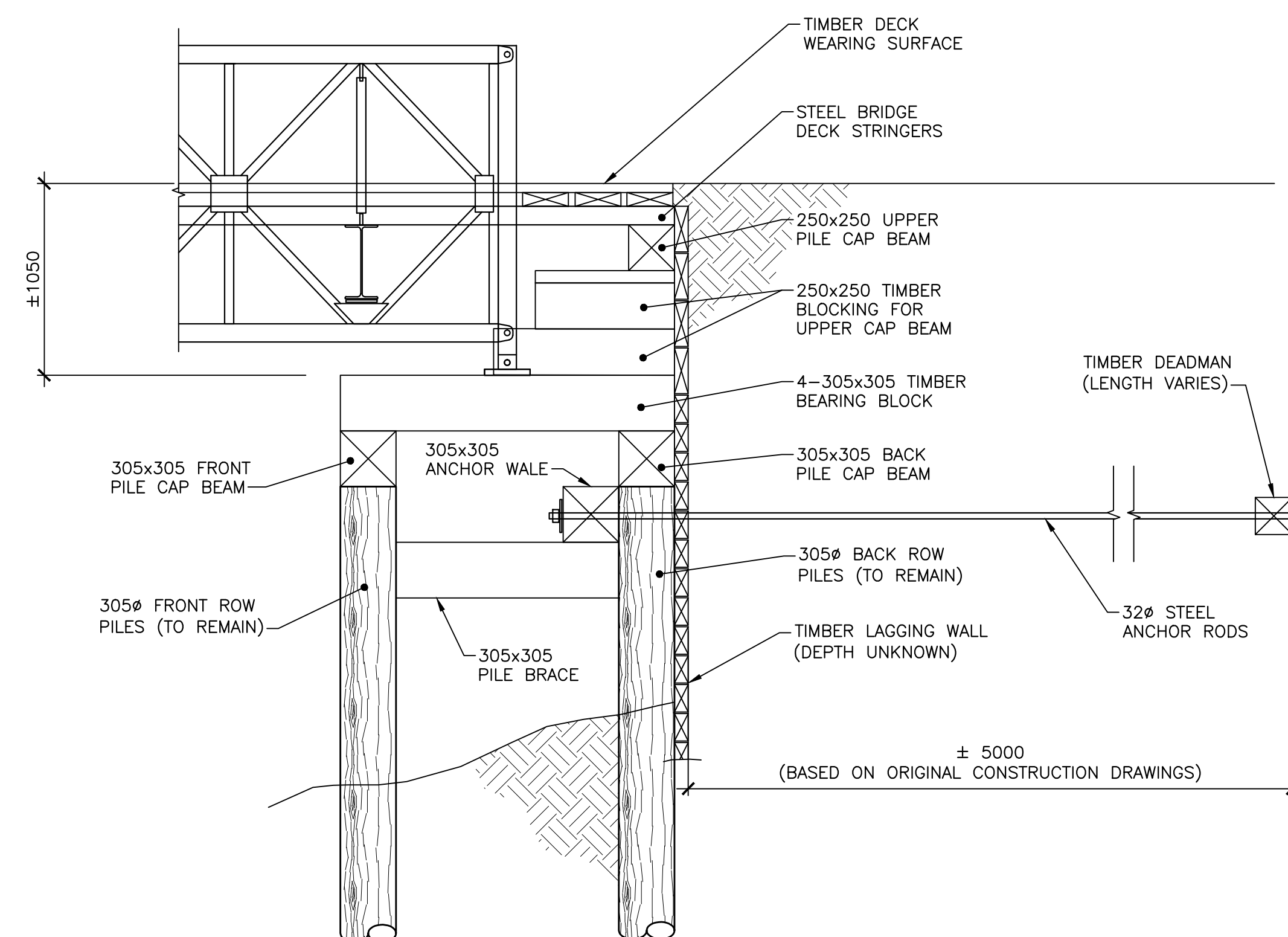
TYPICAL BRIDGE CROSS-SECTION

SCALE: 1:50



TYPICAL ABUTMENT FRONT ELEVATION

SCALE: 1:25



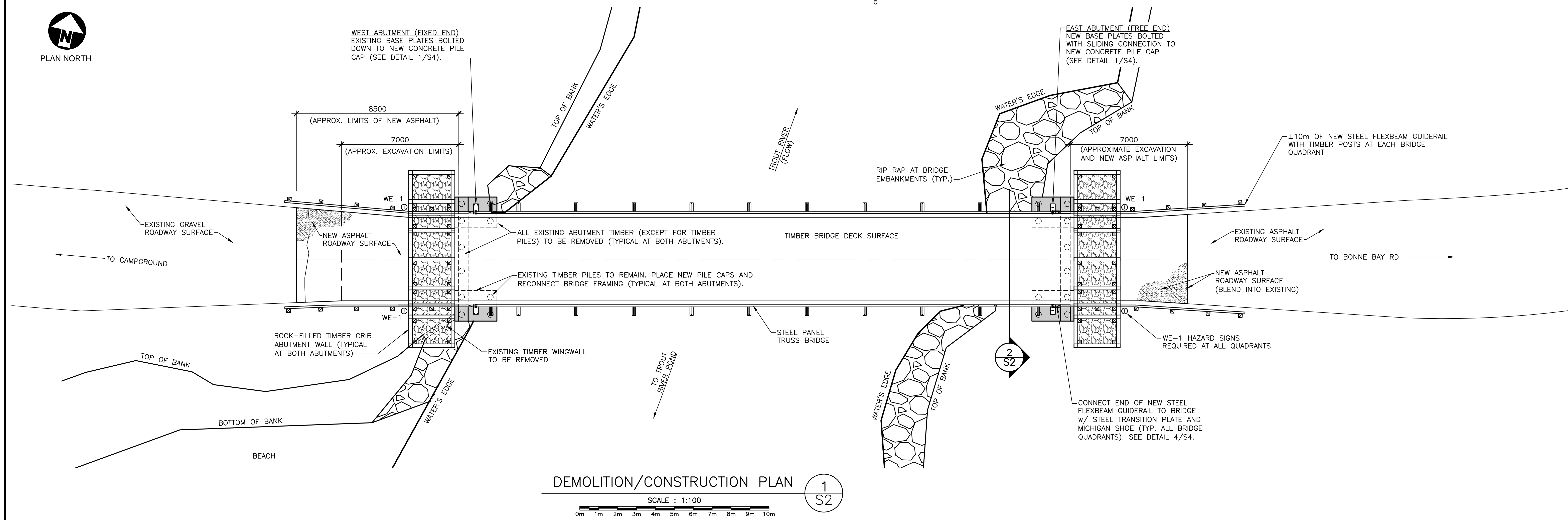
TYPICAL SECTION THROUGH ABUTMENT

SCALE: 1:25

0 ISSUED FOR TENDER JUNE 26 2017
revisions date
project
BRIDGE REPAIR
TROUT RIVER BRIDGE
GROS MORNE
NATIONAL PARK

EXISTING CONDITONS
GENERAL ARRANGEMENT

designed T. PUDDICOME conçu
date 2017/02/03
drawn D. BEAMAN dessiné
date 2017/02/03
approved approuvé
date
Tender Soumission
Project Manager Administrateur de projets
project number no. du projet
1850
drawing no. no. du dessin
S1



CAST-IN-PLACE CONCRETE NOTES:

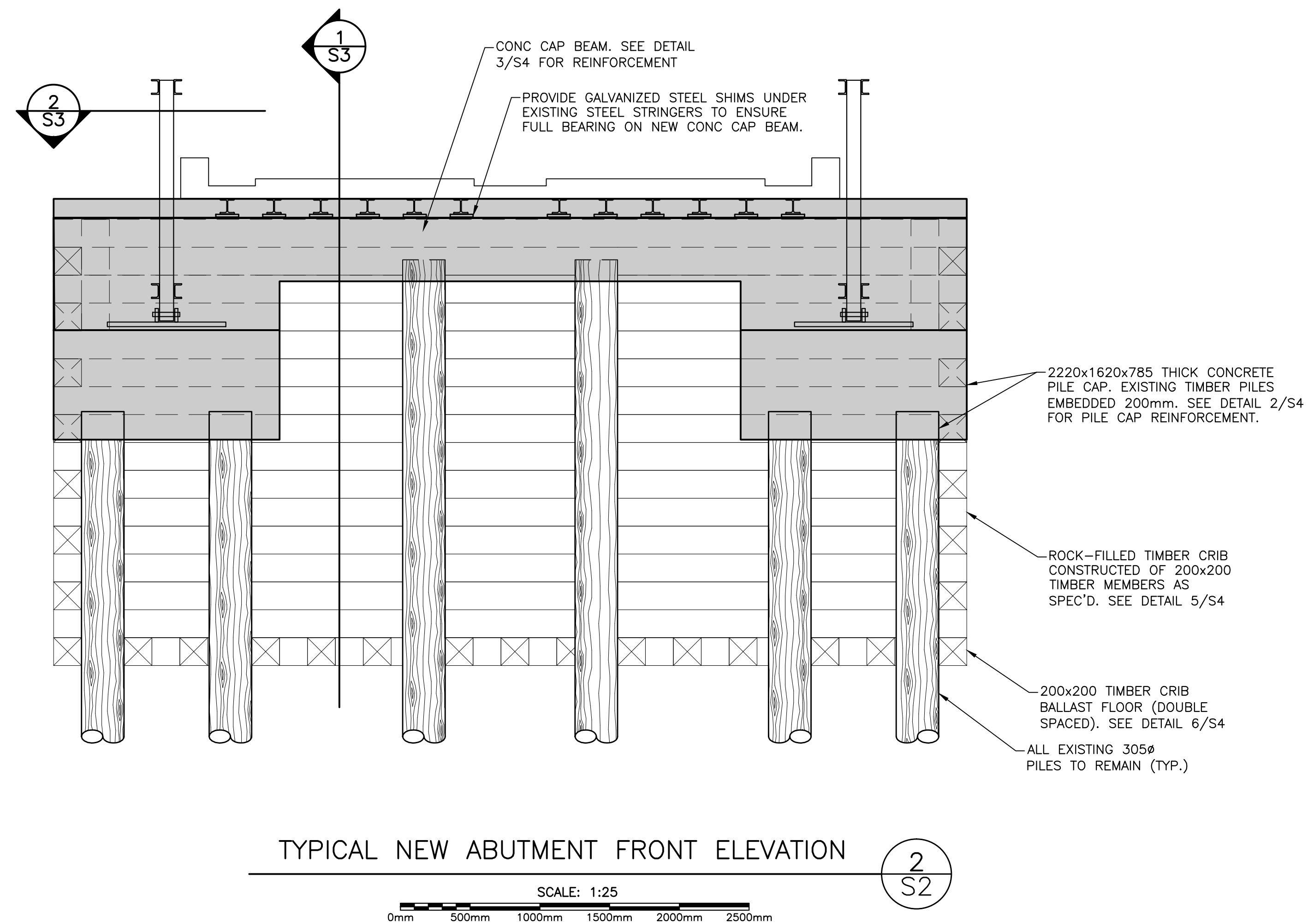
- ALL CAST-IN-PLACE CONCRETE SHALL CONFORM TO CSA STANDARD A23.1, AND TEST METHODS FOR CONCRETE TO CSA STANDARD A23.2.
- ALL EXPOSED CORNERS OF CONCRETE TO HAVE 25mm CHAMFERS.
- CONCRETE COMPRESSIVE STRENGTH AT 28 DAYS TO BE 35 MPa WITH 20mm MAX. AGGREGATE SIZE AND 5% TO 8% AIR ENTRAINMENT. MAXIMUM WATER-CEMENT RATIO 0.40. CLASS F1
- CONCRETE COVER TO REINFORCING STEEL TO BE 70mm (TYPICAL).
- REINFORCING STEEL TO HAVE A MINIMUM YIELD STRENGTH OF 400 MPa (WELDABLE).
- ALL REINFORCEMENT TO BE INSPECTED BY THE ENGINEER PRIOR TO PLACING CONCRETE.
- BENT REINFORCING BAR TYPES IN SCHEDULE REFER TO R.S.I.C. "STEEL MANUAL OF STANDARD PRACTICE" TYPICAL BAR BENDS EXCEPT BAR BEND DIAMETERS AS PER TABLE 6.1, DIVISION 5 SECTION 5 OF NSTIR STD. SPEC. (U.N.O.).

TIMBER NOTES:

- ALL TIMBER TO BE TREATED TO CAN/CSA-080 SERIES M-08 FOR MARINE CONSTRUCTION COASTAL WATER, UNLESS OTHERWISE NOTED.
- TIMBER TO BE DOUGLAS FIR GRADE No1/No2
- FASTENERS: ASTM A307 BOLT. SIZE AS INDICATED ON THE DRAWINGS.
- GALVANIZE ALL HARDWARE TO CSA G164, MINIMUM ZINC COATING OF 610 g/m², UNLESS OTHERWISE NOTED.

JACKING PROCEDURE NOTES:

- JACKING EQUIPMENT, METHODS, AND PROCEDURES PLAN TO BE PREPARED BY AN ENGINEER REGISTERED IN NL AND SUBMITTED FOR APPROVAL.
- ALL JACKS, HYDRAULIC PUMPS, HOSES, VALVES, AND OTHER LIFTING EQUIPMENT ARE TO BE ADEQUATELY SIZED AND IN GOOD WORKING CONDITION, READY AND ABLE TO COMMENCE THE PROPOSED LIFTING OPERATION. JACKS ARE TO BE INSTALLED TRUE AND PLUMB.
- MEASURES TO BE IN PLACE TO PREVENT ANY HYDRAULIC OIL USED IN JACKING PROCEDURES FROM ENTERING INTO WATERWAY IN THE EVENT OF A RUPTURE OR SPILL.
- HYDRAULIC JACKING EQUIPMENT SHALL BE FITTED WITH SAFETY LOCKS NUTS OR OTHER MECHANICAL DEVICES DESIGNED TO HOLD THE LOAD IN THE EVENT OF EQUIPMENT FAILURE OR UNANTICIPATED LOSS OF HYDRAULIC PRESSURE.
- ALL JACKING LOCATIONS ARE TO BE APPROVED BY THE ENGINEER.
- LIFTING OPERATIONS SHALL BE ACCOMPLISHED IN A SLOW AND GRADUAL FASHION TO AVOID ANY SHOCK OR IMPULSE LOADING INTO THE STRUCTURE.
- JACKING LOAD:
 - DEAD LOAD AT EACH BRIDGE ABUTMENT = 21 TONNES.

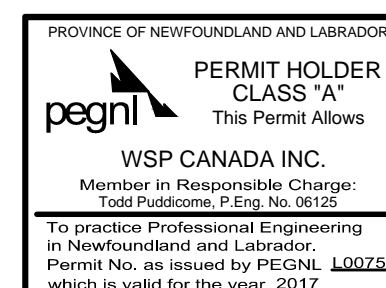
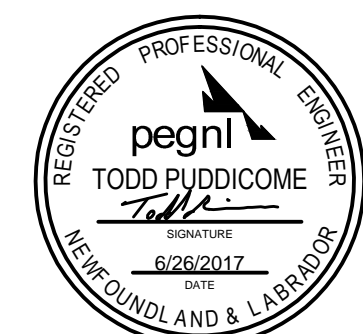
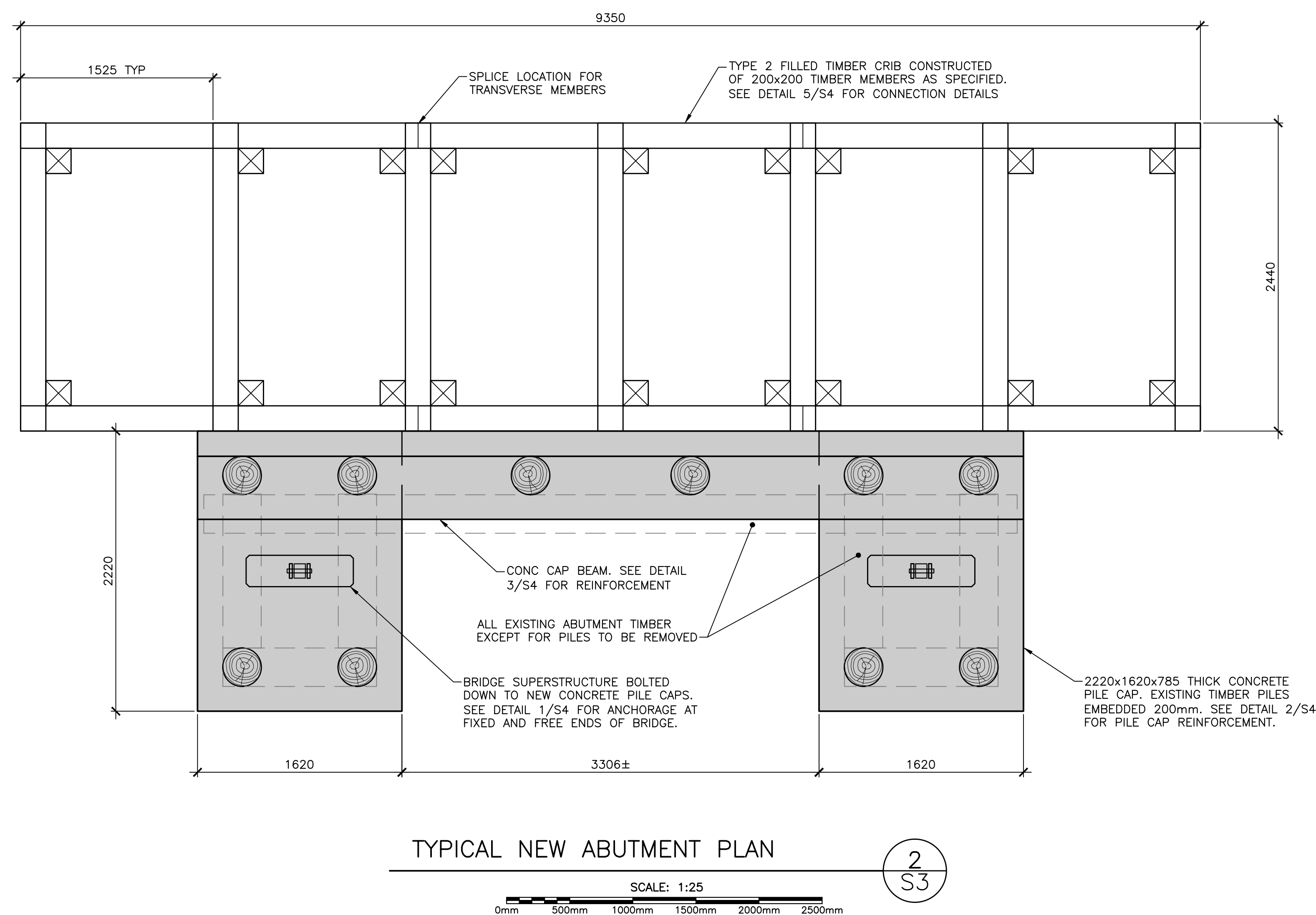


0	ISSUED FOR TENDER	JUNE 26 2017
revisions		date

project	BRIDGE REPAIR TROUT RIVER BRIDGE	project
	GROS MORNE NATIONAL PARK	

drawing	desain
ABUTMENT DEMOLITION AND RECONSTRUCTION PLAN AND ELEVATION	

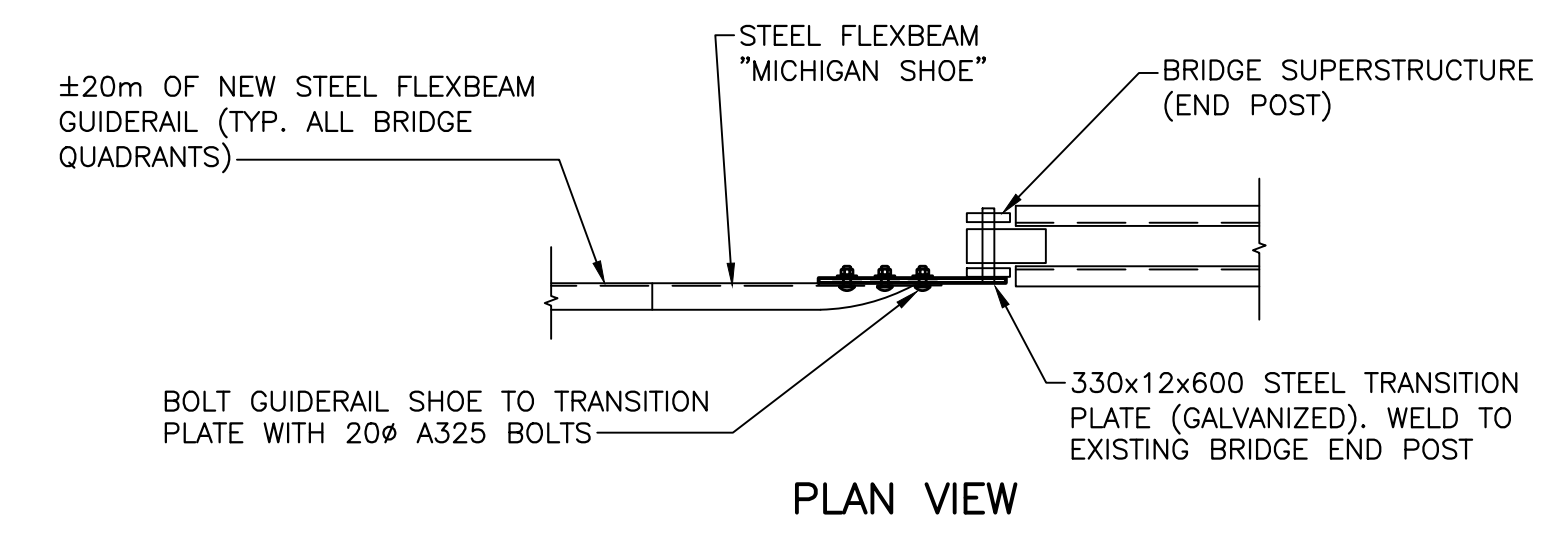
designed	T. PUDDICOMBE	conçu
date	2017/02/03	
drown	D. BEAMAN	dessiné
date	2017/02/03	
approved		approuvé
date		
Tender		Soumission
Project Manager	Administrateur de projets	
project number	no. du projet	
	1850	
drawing no.	no. du dessin	
	S2	



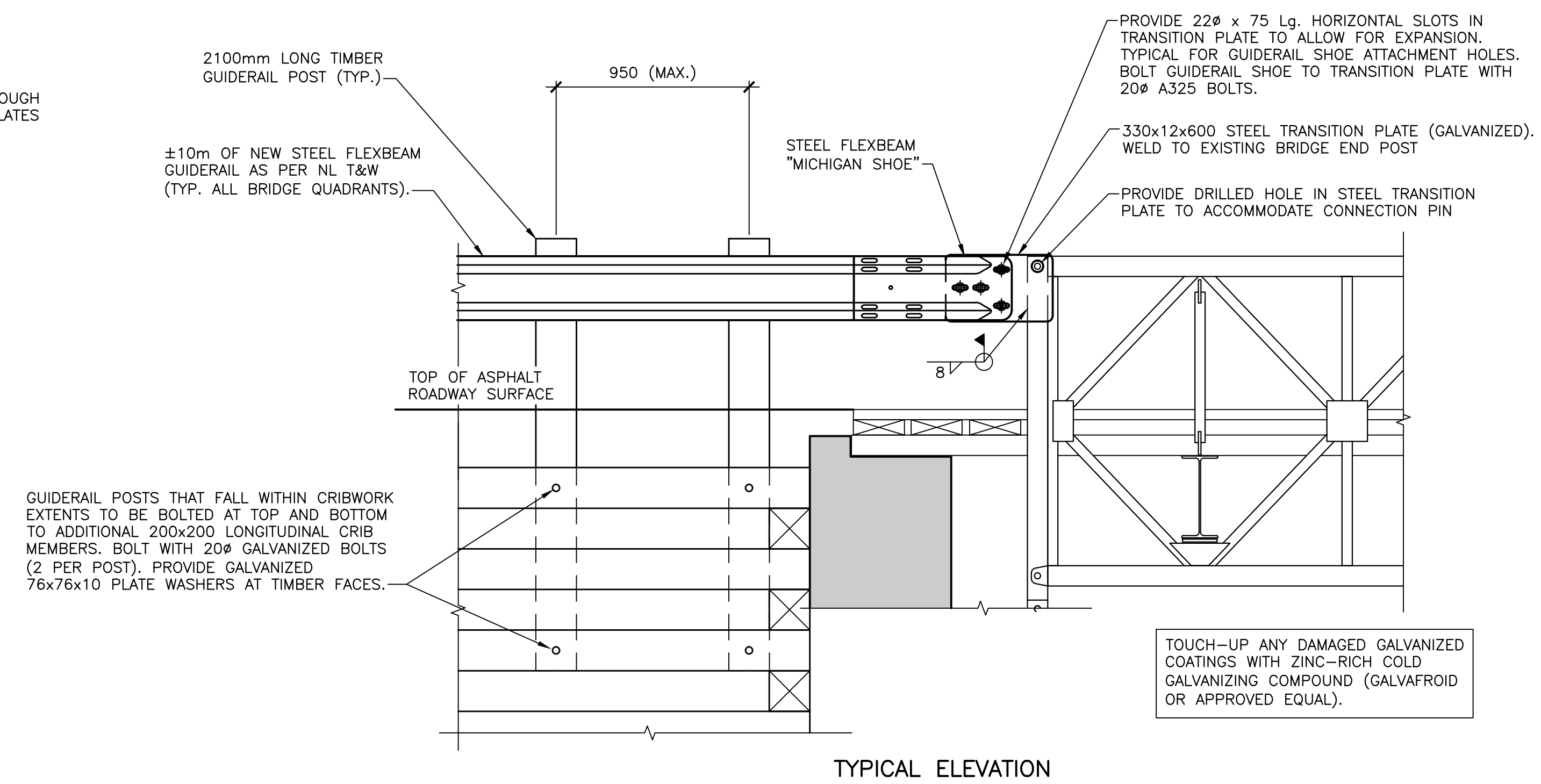
0	ISSUED FOR TENDER	JUNE 21 2017
revisions		date
project	project	
<p>BRIDGE REPAIR</p> <p>TROUT RIVER BRIDGE</p> <p>GROS MORNE</p> <p>NATIONAL PARK</p>		

ABUTMENT RECONSTRUCTION SECTIONS AND DETAILS

designed	T. PUDDICOME	conçu
date	2017/02/03	
drawn	D. BEAMAN	dessiné
date	2017/02/03	
approved		approuvé
date		
Tender		Soumission
Project Manager		Administrateur de projets
project number	1850	no. du projet
drawing no.		no. du dessin

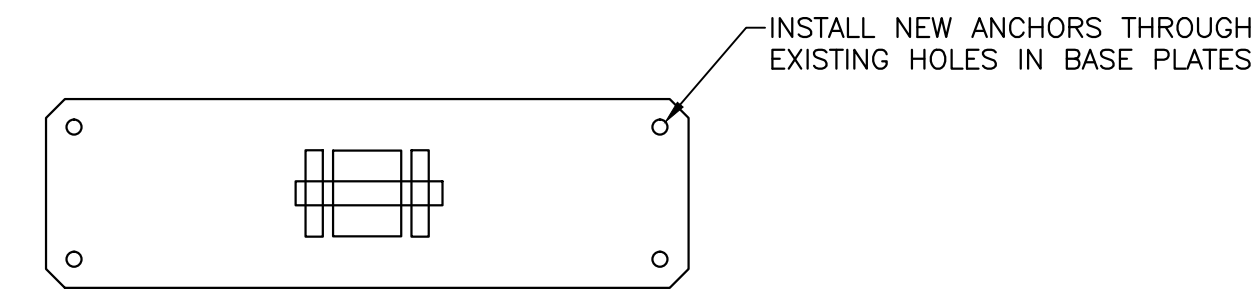
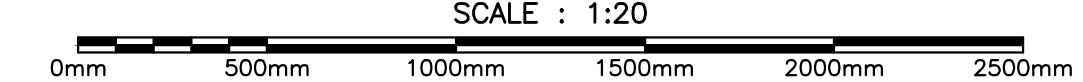


PLAN VIEW



TYPICAL ELEVATION

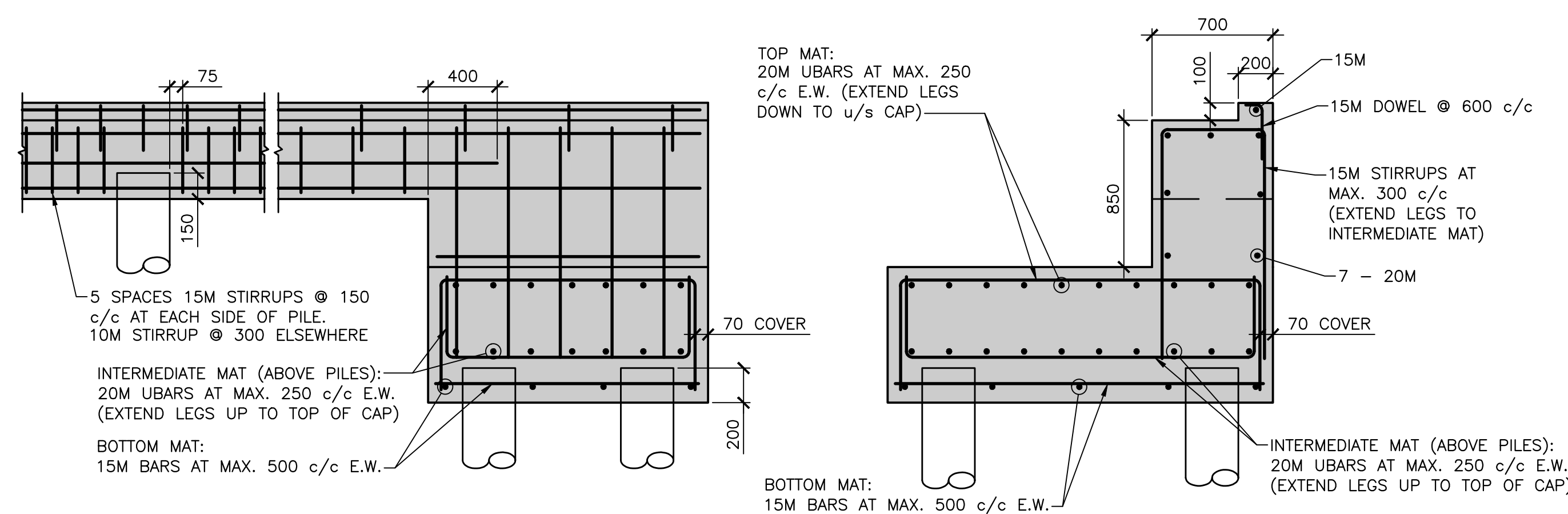
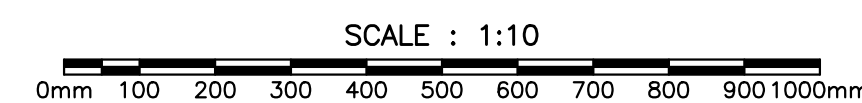
FLEXBEAM GUIDERAIL BRIDGE ATTACHMENT



FREE END - EAST ABUTMENT

FIXED END - WEST ABUTMENT

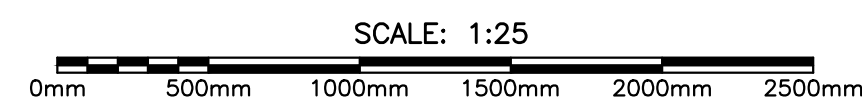
BRIDGE BASE PLATE ANCHORAGE



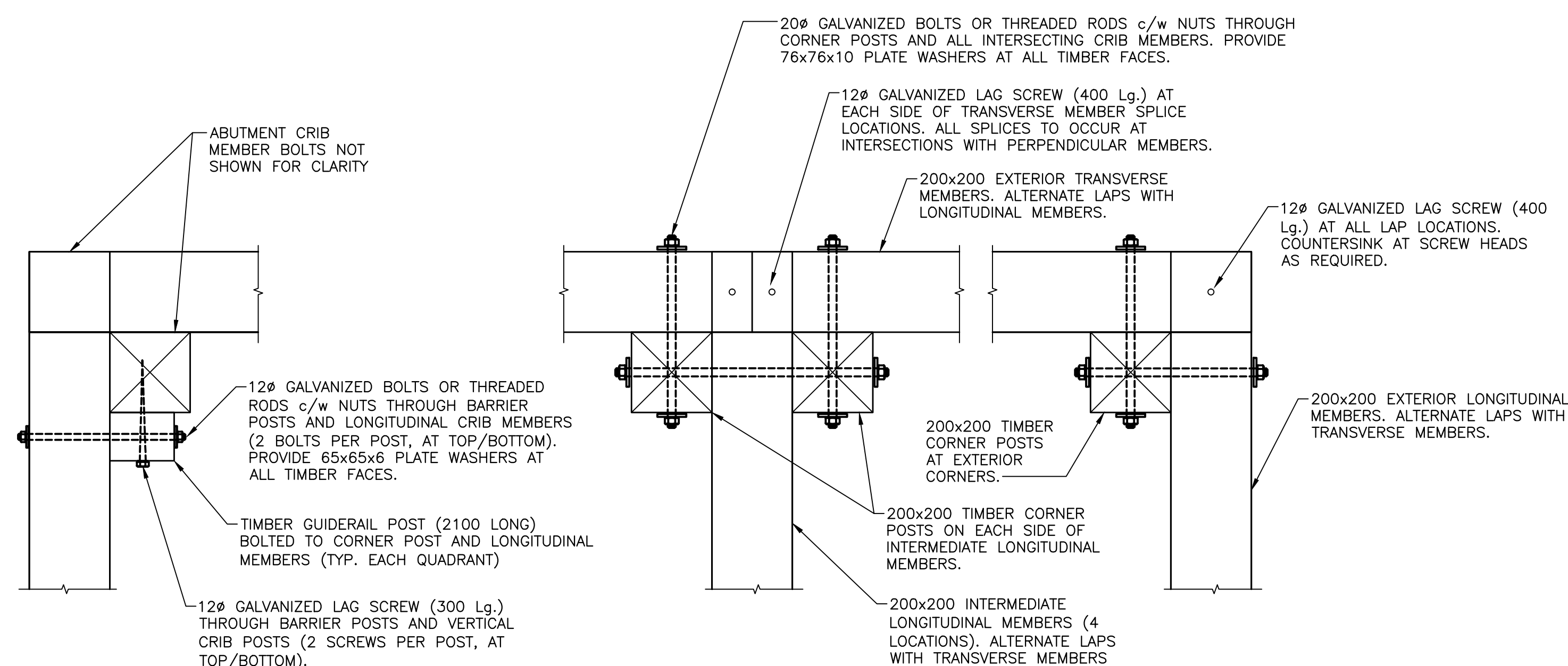
FRONT ELEVATION

SIDE ELEVATION

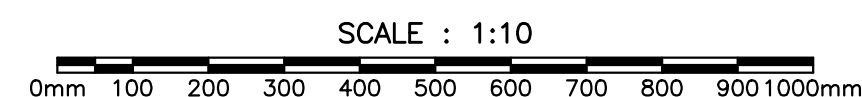
PILE CAP REINFORCEMENT



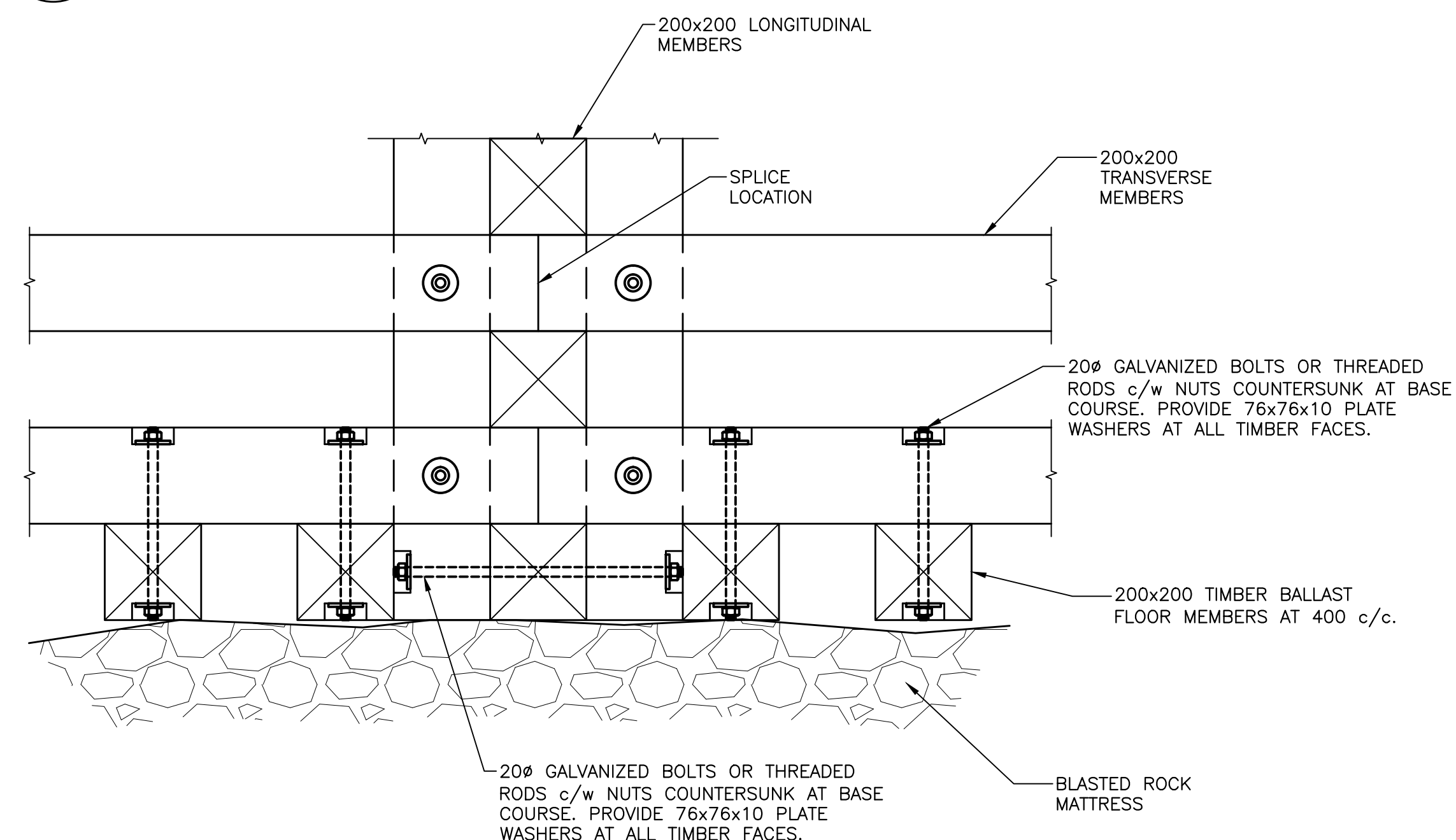
CAP BEAM REINFORCEMENT




TIMBER CRIB CORNER CONNECTION — PLAN



TIMBER CRIB CONNECTION –
BALLAST FLOOR ELEVATION



SCALE : 1:10



0mm 100 200 300 400 500 600 700 800 900 1000mm