
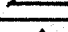

[illegible]

PUBLIC WORKS OF CANADA	
MONT LOUIS	
GASPÉ COUNTY, QUEBEC.	
WHARF CONSTRUCTION	
REINFORCED CONCRETE - CELL No. 1	
SCALE $\frac{3}{8}'' = 1'-0''$	
APPROVED BY: DISTRICT ENGINEER, RIMOUSI, QUE.	CHECKED <i>[Signature]</i> OTTAWA JAN. 22, 1954 APPROVED <i>[Signature]</i> OTTAWA JAN. 15, 1954 CHIEF ENGINEER
SUPERINTENDING ENGINEER, PROVINCE OF QUEBEC	
O. J. McCULLOUGH & CO. CONSULTING ENGINEERS, MONTREAL, QUE.	
MADE: W.T. TRCD: W.T. CHND: R.J.G. & R.	SHEET No. 3 of 7. PLAN A-219 JAN. 21, 1954. DATE

NOTES:

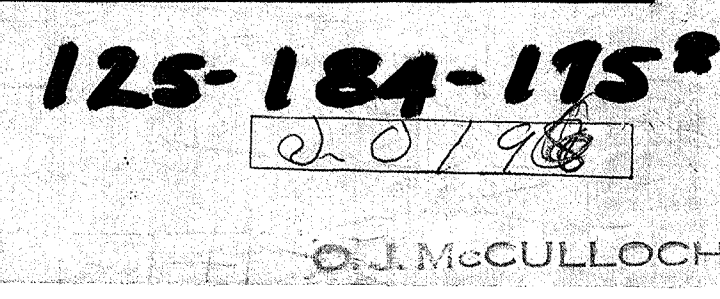
- 5) X DENOTES 'AS QUOTED' FIGURE
- 6) DUE TO THE USE OF MILD STEEL BY THE CONTRACTOR, GENERAL SPACING OF BARS WAS CHANGED FROM 12" CTS. SHOWN TO 10" CTS. AND FROM 6" CTS. TO 8" CTS.
- 7) CERTAIN BARS SHOWN ON PLAN ARE NOT INCLUDED IN BILL.
- 8) FOR MATCH COVER AND FRAME, BOLLARD BASES WITH REINFORCING, LOCATION AND DETAILS OF LADDERS, BILL OF TIMBER CURBS AND CURB ANCHORS SEE SHEET NO. 7.
- 9) FOR BOLLARD DETAILS' AND S.S.P. ANCHOR BOLTS SEE SHEET NO. 2.
- 10) FOR EXPANSION JOINT DETAILS & TYP'L SLAB SEE SHEET NO. 4.
- 11) MAINTAIN 2" SPACING OF BARS AT LAPS.

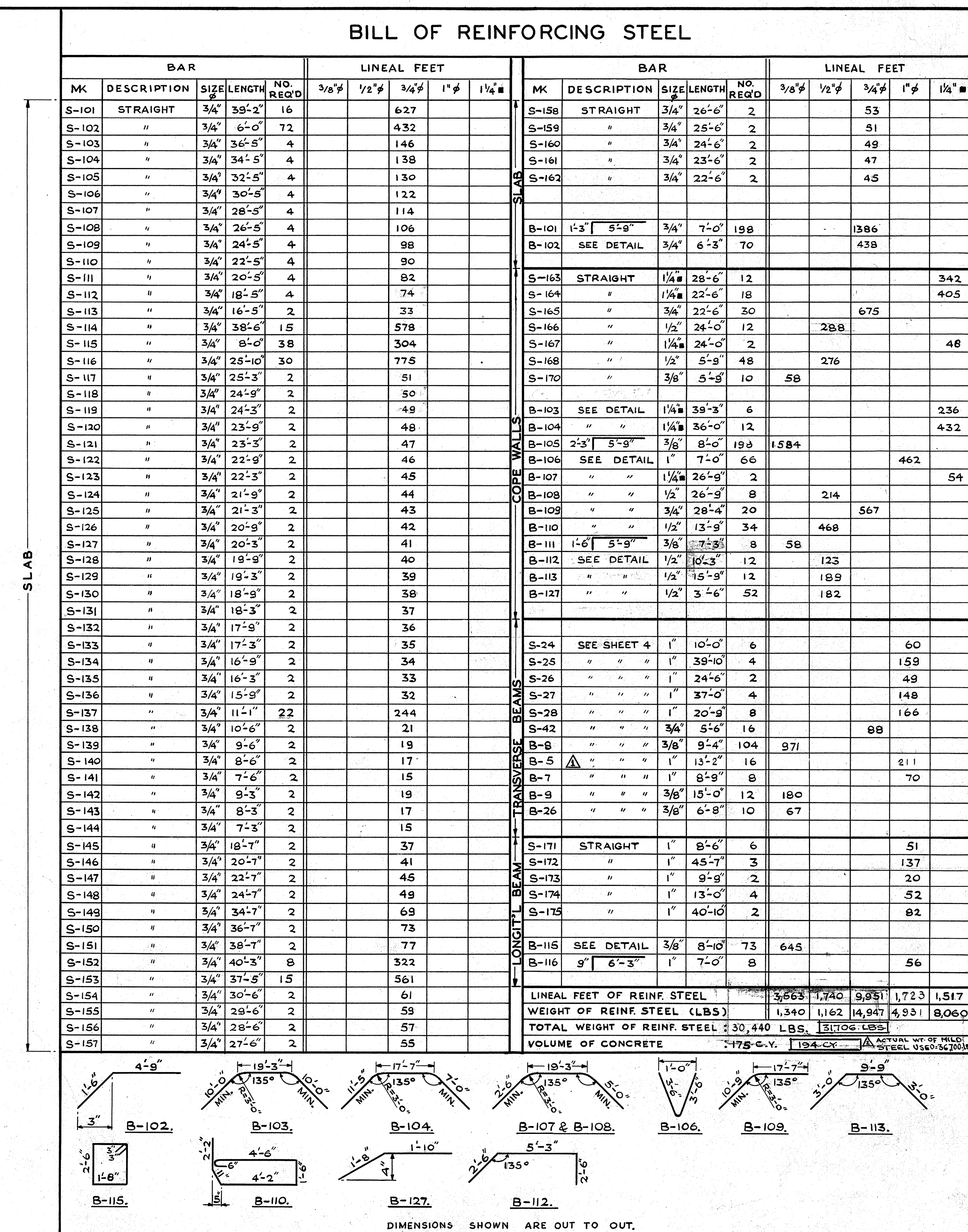
SECTION				
		AS BUILT	FEB/56	R.J.G.
		EXPANSION JOINT - ALTERED	SEPT.1954	E.K.
		DARS M-B-305 ALTERED & TOTALS IN BILL OF REINFG REVISED ACCORDINGLY.	MARCH 17-1954	R.P.
	MARK	DESCRIPTION		DATE
		REVISIONS		


DATE

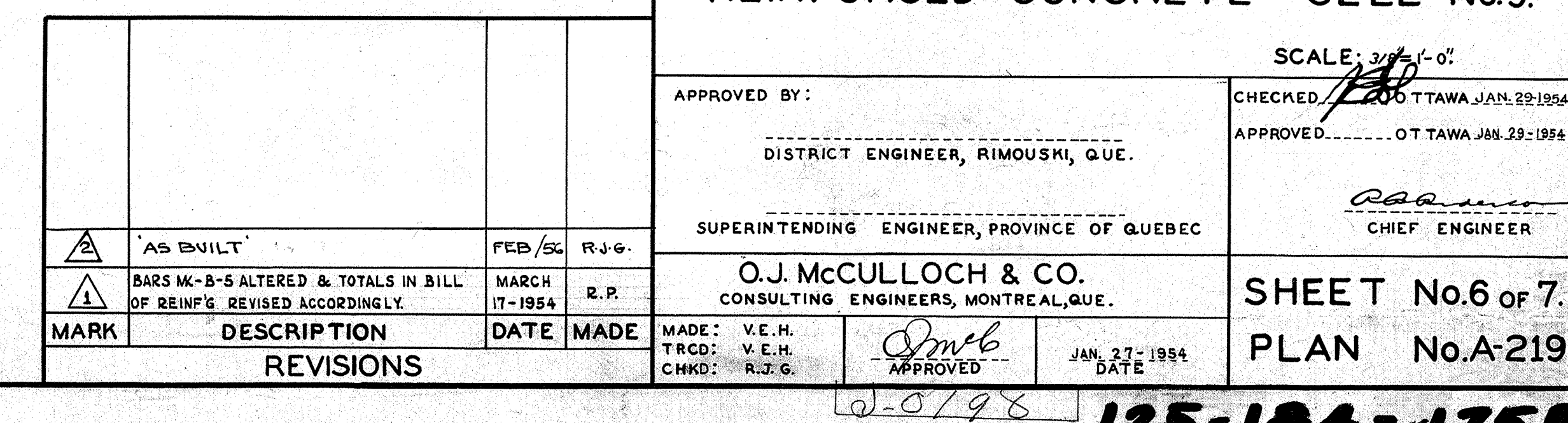
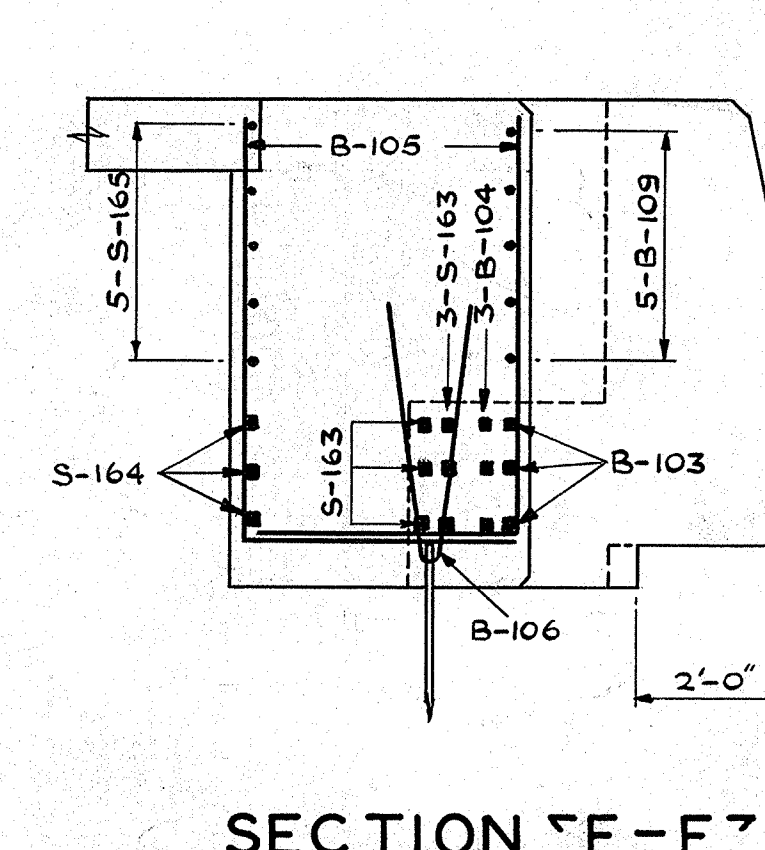
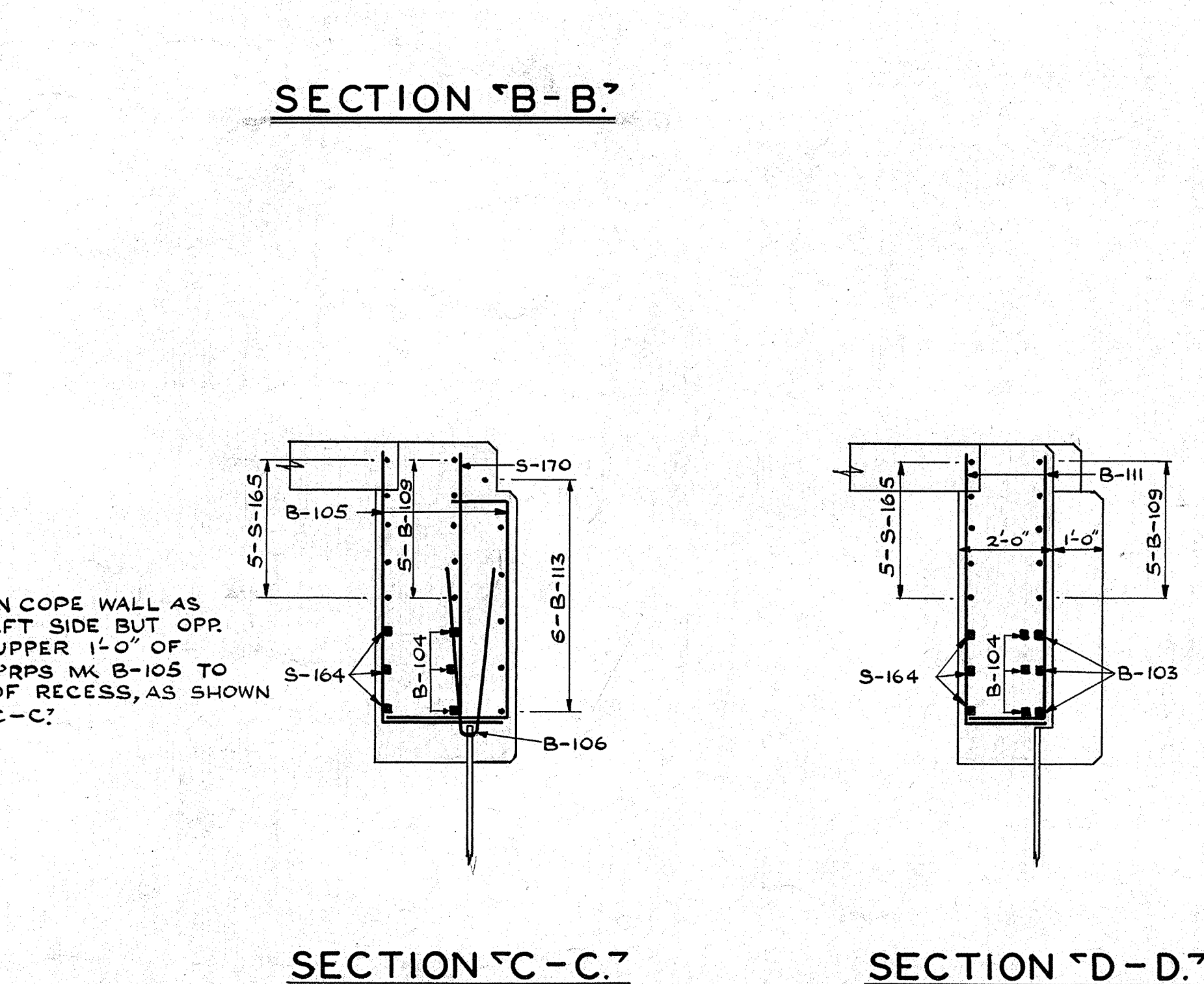
125-184-175R

W-0695

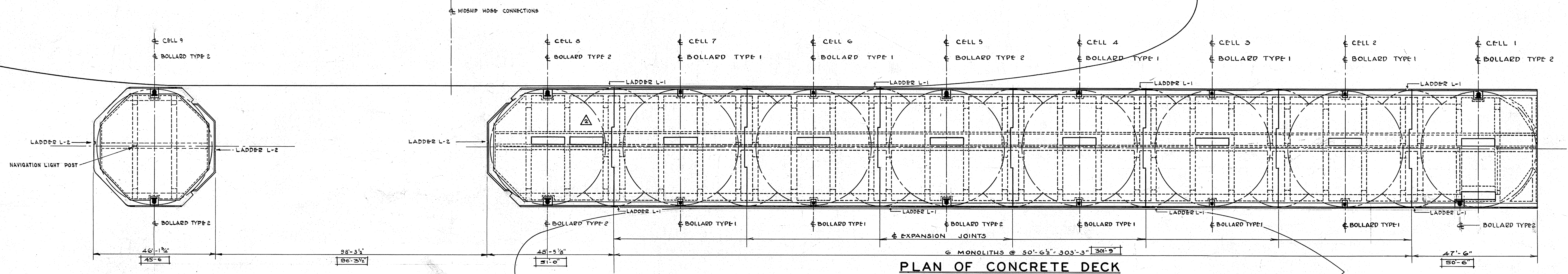




NOTES: 1) COVER TO REINF. BARS, EXCEPT WHERE SHOWN OTHERWISE.
2) FOR TYPICAL SLAB SECTION SEE SHEET 2.
3) FOR LOCATION & DETAILS OF S.S.P. ANCHOR BOLTS SEE SHEET 2.
4) FOR DETAILS OF LADDERS, BOLLARD BASES NAVIGATOR LIGHT STANDARD
& REINFORCING FOR THESE ITEMS SEE SHEET 2.
5) MAINTAIN 3" SPACING BETWEEN BARS AT JOINTS.
6) DRILL 1/16" HOLES IN NAVIG'N LIGHT STANDARD TO ACCOMMODATE
BEAM REINF'G.
7)  AS BUILT FIGURE
8) FOR C.B. SPRING ANCHORS, SEE NOTE 6, SHEET 3.

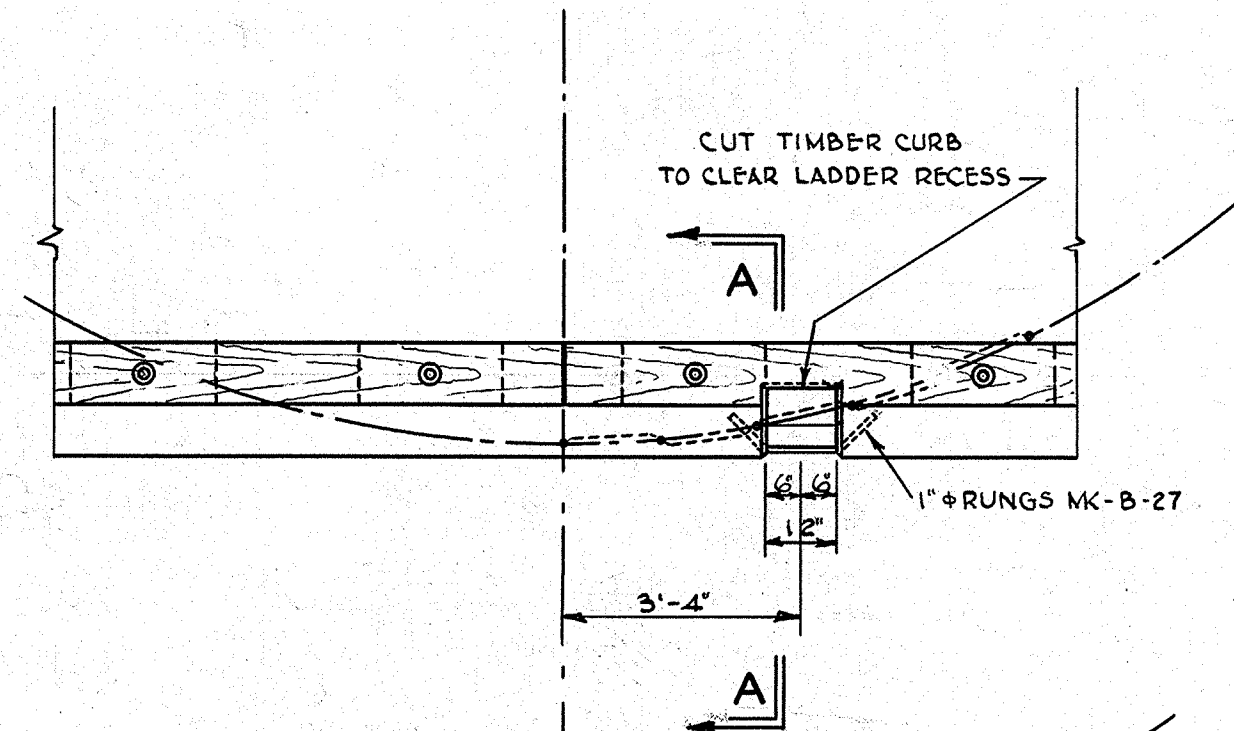


T-2 TANKER

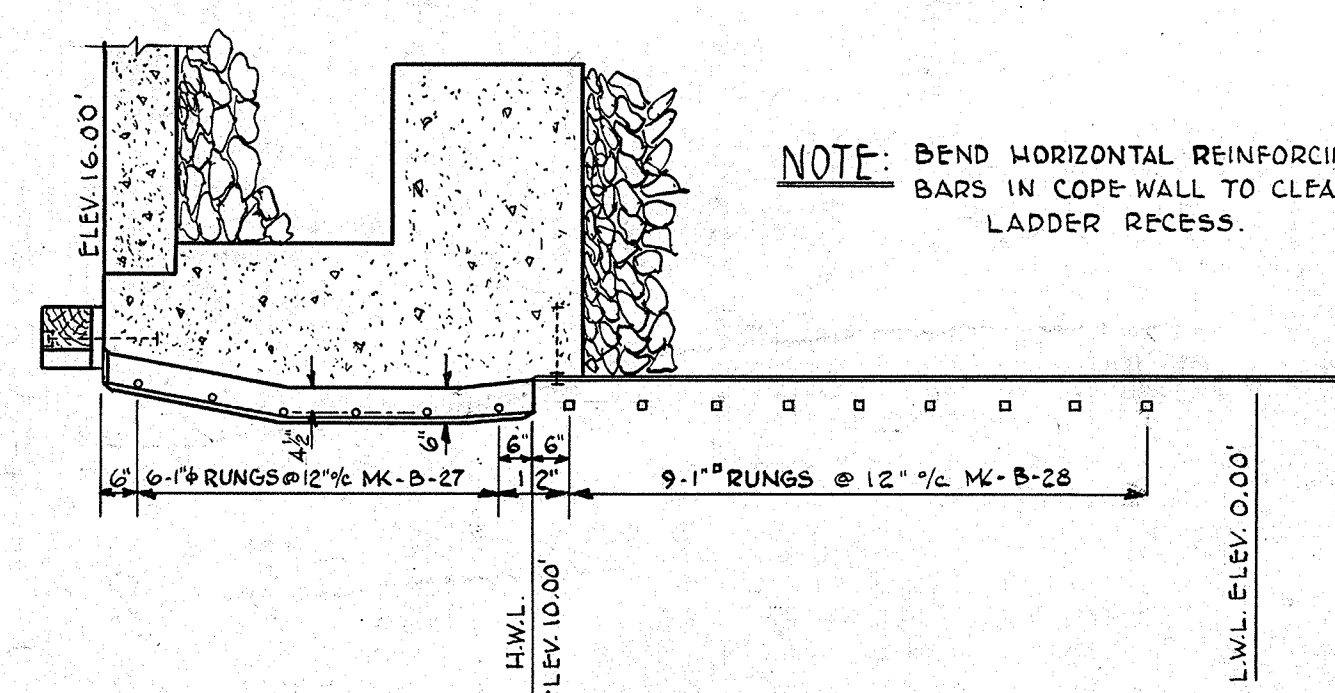


PLAN OF CONCRETE DECK
SCALE 1/8"=1'-0"

NOTE: FOR CONCRETE DETAILS AT ELECTRICAL RECEPTACLES AND PULL BOXES SEE SHEET 8.
AS BUILT FIGURES



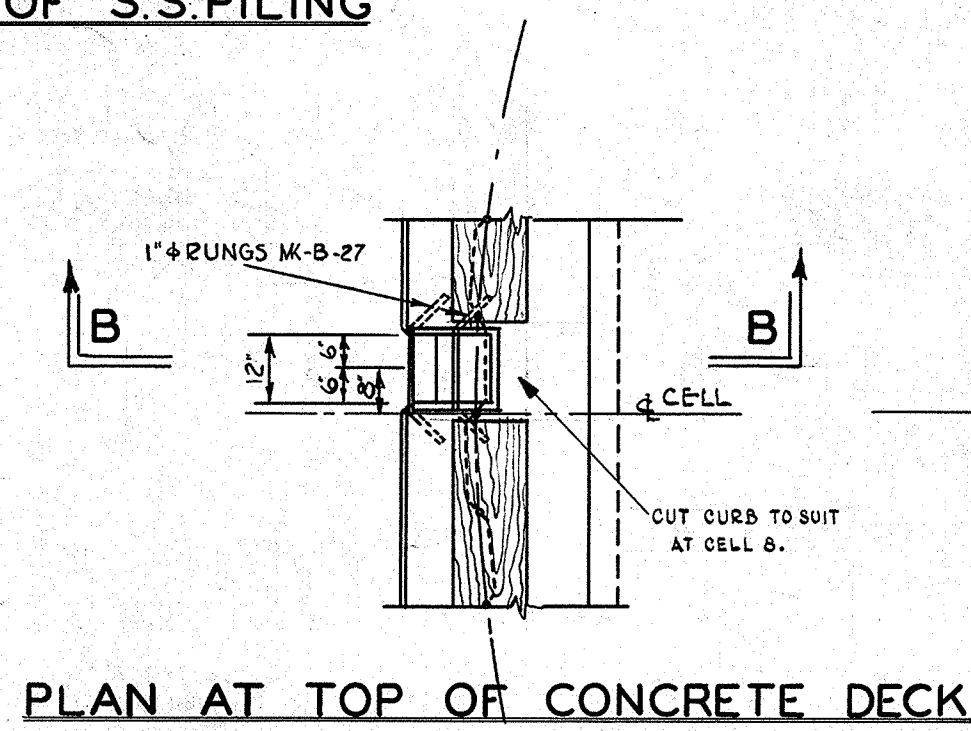
PLAN AT TOP OF CONCRETE DECK



DETAILS OF LADDER L-1
SCALE 1/4"=1'-0"

DESCRIPTION	QUANTITIES PER CELL				SUB TOTALS
	1	2	3	4	
TIMBER CURBS: 10' x 12'	0.943 M	0.943 M	1.18 M		7.75 M
TIMBER BLOCKS: 2' x 12' x 2'-0"	0.096 M	0.096 M	0.118 M		0.78 M
CURB ANCHORS: (COMPLETE)	24	6 x 24	28		196
(1/4" BOLT 1' L)					
(1/2" HEX)					
(1/4" BOLT)					
TOTALS: TIMBER: 8.56 M FEM, CURB ANCHORS: 196 @ 174 LBS EACH 1516 LBS					1505 LBS

PLAN AT TOP OF S.S. PILING



PLAN AT TOP OF CONCRETE DECK

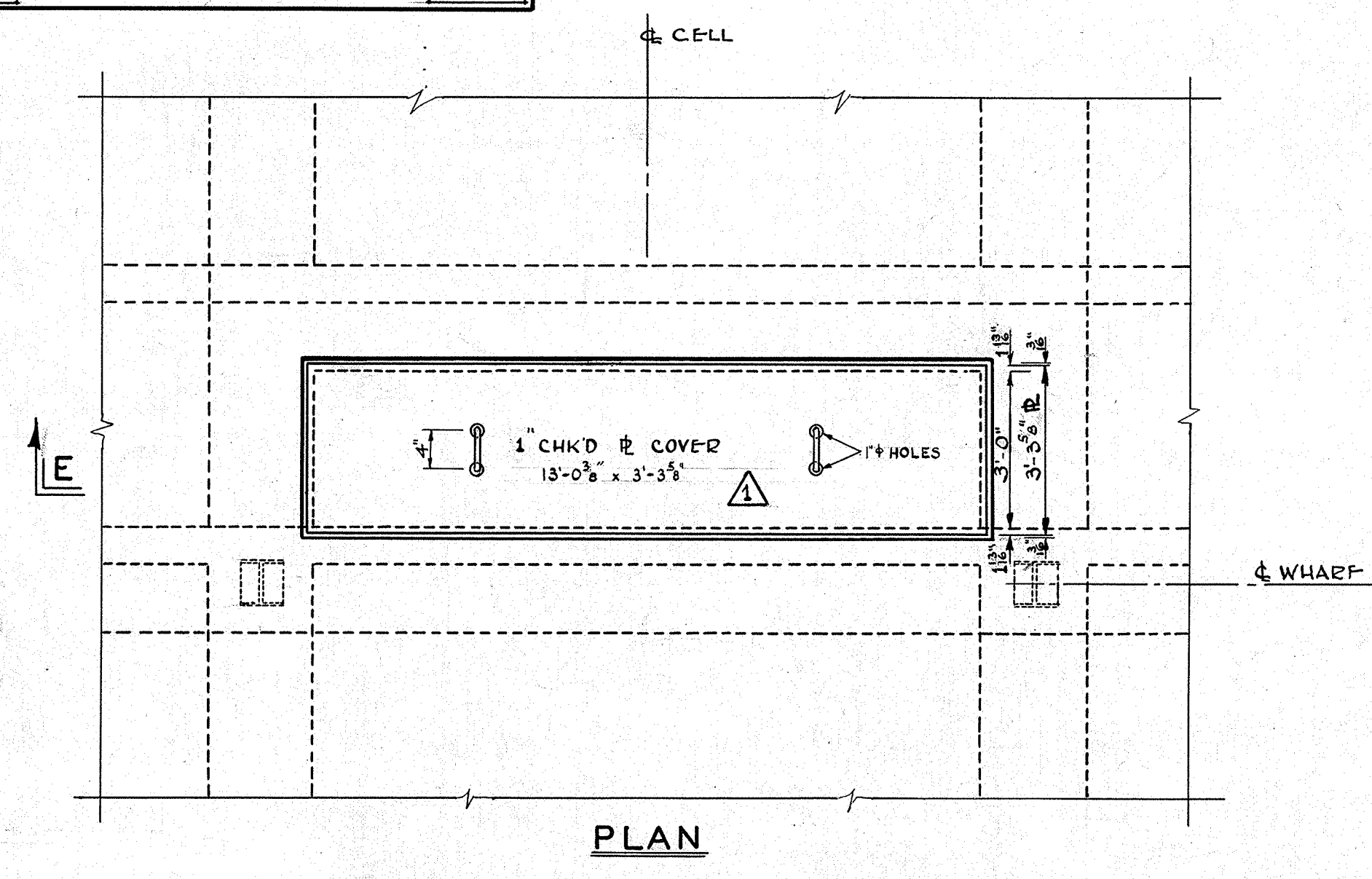
PLAN AT TOP OF S.S. PILING

DETAILS OF LADDER L-2
SCALE 1/4"=1'-0"

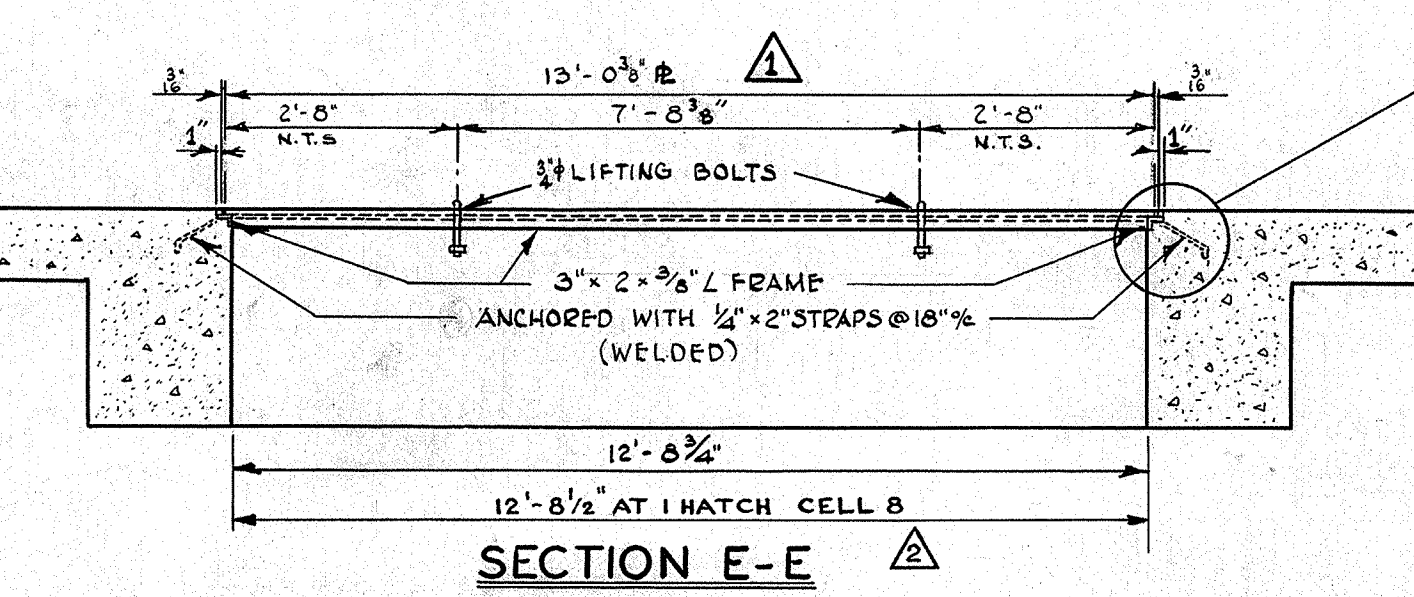
SECTION B-B

MARK	DESCRIPTION	SIZE	LENGTH	WEIGHT	TOTAL	LINEAL FEET			
						1/2"	3/4"	1"	1 1/2"
B-29	STRAIGHT	5/8"	4'-0"	3	5.4	216			
B-30	A 3'-4" B 3'-0"	5/8"	10'-4"	1	8			88	
B-31	A 3'-7" B 3'-0"	5/8"	10'-10"	2	16			174	
B-32	A 3'-4" B 3'-0"	5/8"	9'-2"	1	10			92	
B-33	A 3'-7" B 3'-0"	5/8"	9'-8"	2	20			184	
B-27	SEE DETAIL ON DWG.	1"	2'-0"	6	69			173	
B-28	SEE DETAIL ON DWG.	1"	2'-0"	6	72			198	
A-20		1"	3'-4"	3	27			86	
LINEAL FEET (SUB TOTALS)					216	543	173	284	
WEIGHT OF REINF. (SUB TOTALS)					82	263	402	946	
TOTAL WEIGHT OF REINF. STEEL					1673 LBS OR 0.9365 TON				

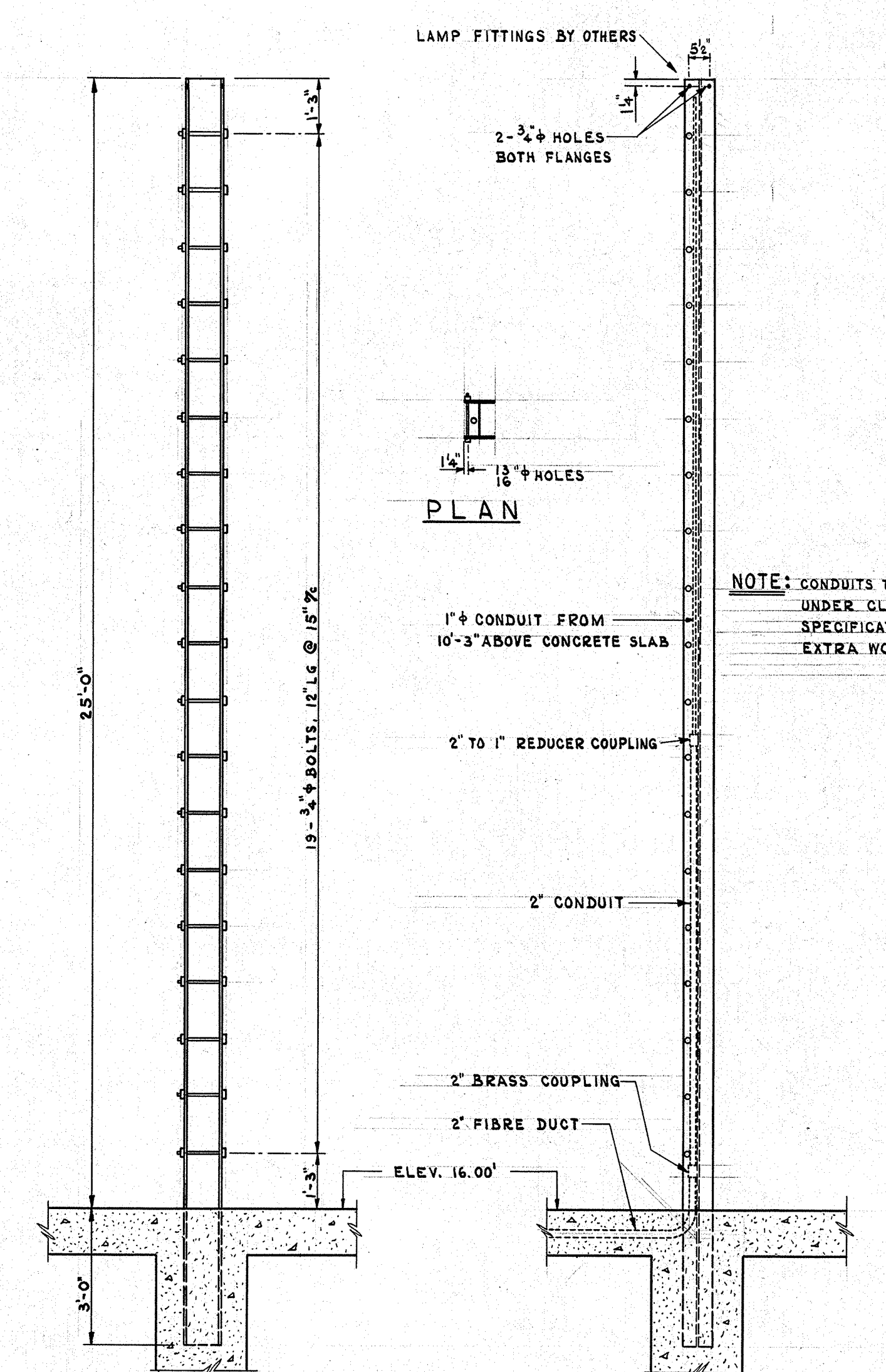
* THIS REINF. IS INCLUDED WITH AS BUILT CELL STEEL.



PLAN



DETAILS OF HATCH COVER & FRAME
SCALE 1/8"=1'-0"



DETAIL OF NAVIGATION LIGHT POST

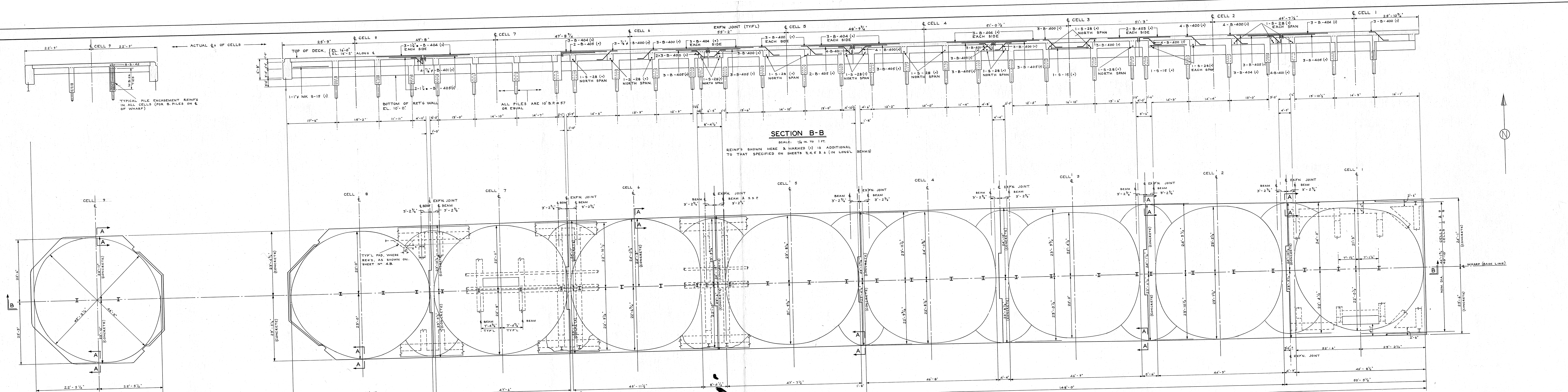
PUBLIC WORKS OF CANADA
MONT LOUIS
GASPE COUNTY, QUEBEC.
WHARF CONSTRUCTION

GENERAL PLAN OF WHARF
& MISCELLANEOUS DETAILS

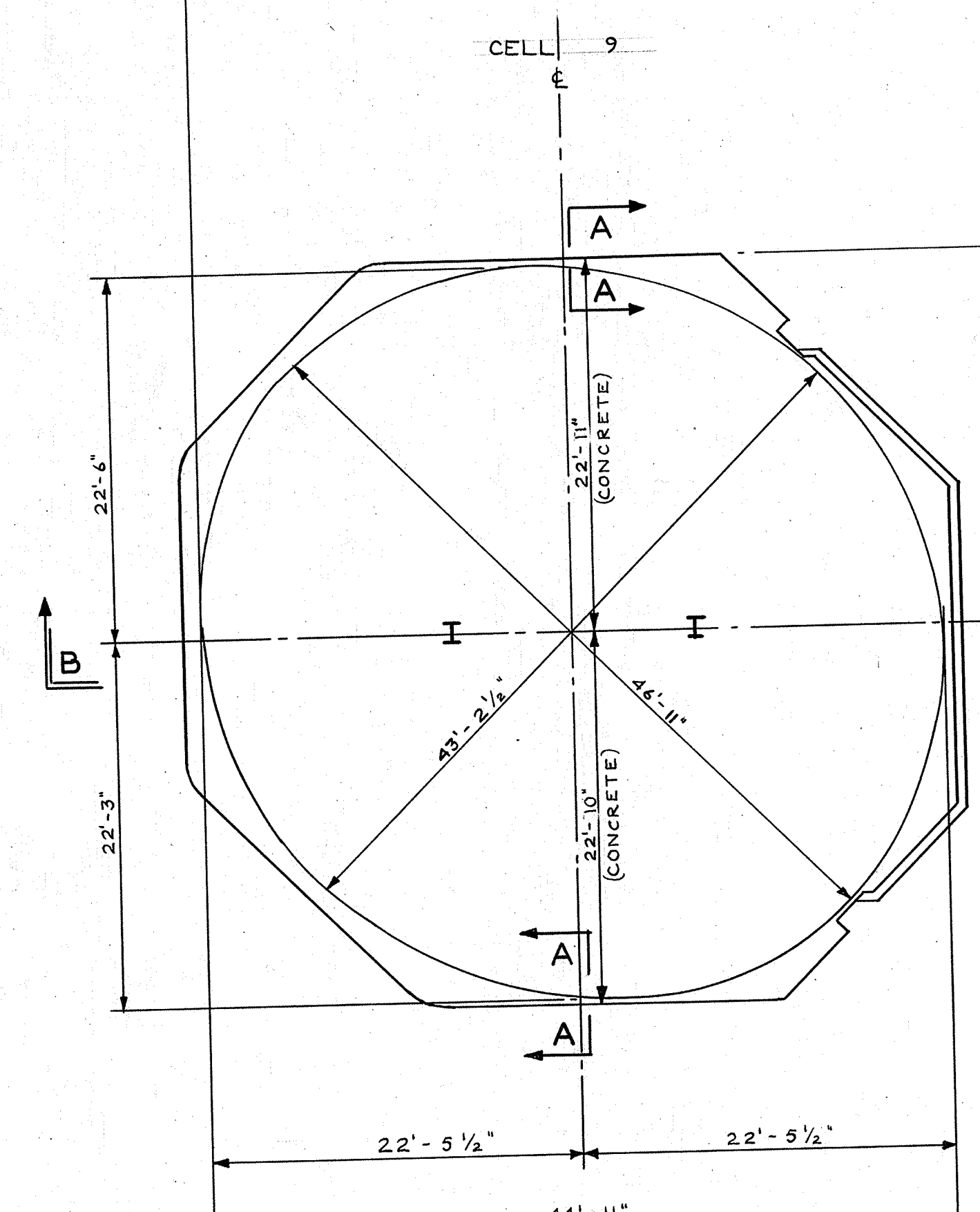
SCALE: AS SHOWN.

APPROVED BY:	CHECKED: <i>[Signature]</i> OTTAWA JAN 29: 1954.
DISTRICT ENGINEER, RIMOUSKI, QUE.	APPROVED: OTTAWA JAN. 29: 1954.
SUPERINTENDING ENGINEER, PROVINCE OF QUEBEC	CHIEF ENGINEER
O. J. McCULLOCH & CO. CONSULTING ENGINEERS, MONTREAL, QUE.	SHEET No. 7 of 7.
MADE: R.P. TRCD: M.M.G. & R.R. CHKD: R.J.G.	JAN. 31: 1954. DATE
REVISIONS	PLAN No. A-219

125-184-175R
0199



SECTION B-B
 SCALE: 1/8 IN. TO 1 FT.
 REINFC SHOWN HERE & MARKED (X) IS ADDITIONAL TO THAT SPECIFIED ON SHEETS 3, 4, 5 & 6 (IN LONG. BEAMS)



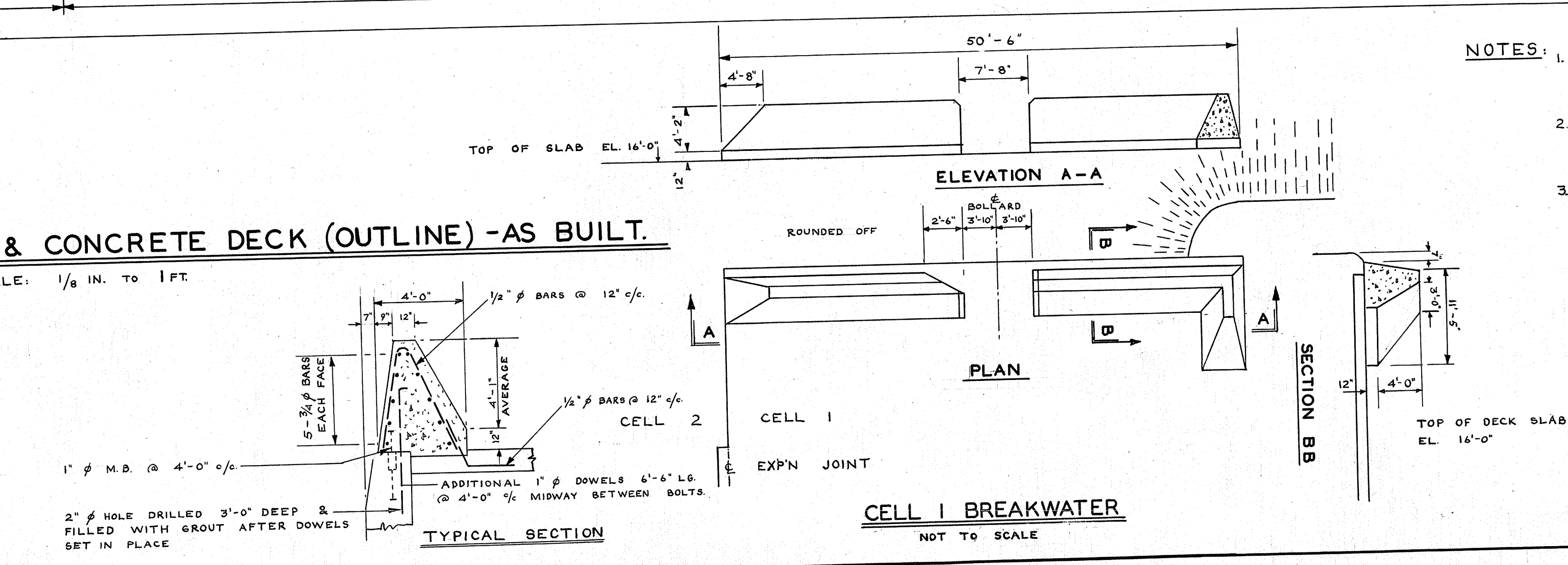
TYPICAL SECTION A-A
 SCALE: 3/8" TO 1'-0"

THESE BARS ARE IN ADDITION TO THOSE CALLED FOR ON DWGS. NOS. 3 TO 6. THE QUANTITY & LENGTH OF BARS CALLED FOR ON DWGS. 3 TO 6 HAVE BEEN ALTERED TO SUIT REQUIREMENTS OF "AS BUILT" DIMENSIONS.

56 - B-400 - 7/8" x 7'-2" LG
 15 - B-401 - 7/8" x 6'-8" LG
 4 - B-403 - 1" x 12'-0" LG
 35 - B-404 - 1/4" x 17'-0" LG
 29 - B-405 - 1/4" x 12'-0" LG
 3 - S-15 - 1" x 13'-0" LG
 24 - S-28 - 1" x 22'-4" LG

BENDING OF ADDITIONAL BARS*
 SHOWN ON SECTION "B-B" AS (X)

LAYOUT OF S.S.P. CELLS & CONCRETE DECK (OUTLINE) -AS BUILT.
 SCALE: 1/8 IN. TO 1 FT.



- NOTES:**
1. EXP. JOINTS ARE PLACED MIDWAY BETWEEN S.S.P. CELLS ON WHARF E. EXCEPT BETWEEN CELLS NO. 2 & 3 AND 1 & 2.
 2. AT ANY SPECIFIC CELL THE E. OF THE LONGEST BEAM COINCIDES WITH E. OF SUPPORTING BEARING PILES WITH TOLERANCE OF 4".
 3. SLAB SURFACE RISES FROM EL. 16'-0" AT COPE WALLS TO EL. 16'-2" TO FORM CROWN AT WHARF E.

PUBLIC WORKS OF CANADA MONT LOUIS GASPE COUNTY, QUEBEC WHARF CONSTRUCTION			
PLAN SHOWING REVISED CONCRETE DECK LAYOUT TO SUIT PILING AS BUILT.		SCALE: 1/8" TO 1'-0"	
REVIEWED BY:	DISTRICT ENGINEER, RIMOUSKI, QUE.	CHECKED:	APPROVED: OTTAWA
O. J. McCULLOCH & CO. CONSULTING ENGINEERS, MONTREAL, QUE.		DWG. NO. 200-B PLAN NO. A-219	
MADE: E.V.M.	CHECKED: R.J.G.	CERTIFIED: AUG 3 1955	DATE
TRACED - MARCH 5 1956			

125-184-175A
 0-0/92