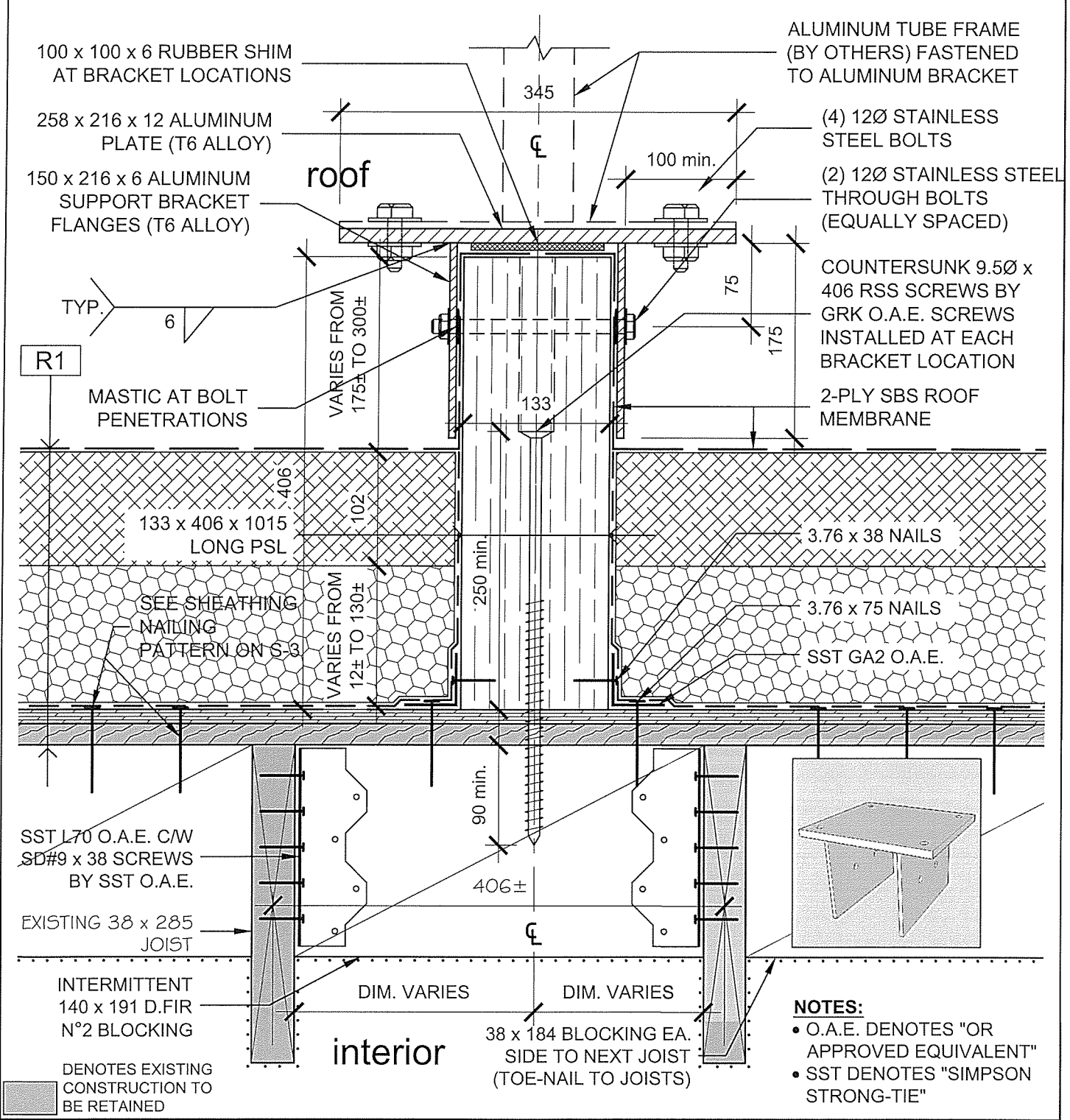

*The following changes in the Tender Documents are effective IMMEDIATELY.
This addendum will form part of the Contract Documents*

Amend/revise the Standard Contract Documents as follows:

1.0 CHANGES AND CLARIFICATIONS

- 1.1 **ADD** RDH Building Science Inc. General Arrangement Drawings (24" x 36"), Issued for Addendum #1, dated July 21, 2017 (2 drawings in total):
 - A-1.2A Signage Plan
 - A-2.2 Signage Elevations
- 1.2 **ADD** RDH Building Science Inc. Detail Drawing (8.5" x 11"), Issued for Addendum #1, dated 21 July, 2017 (1 drawing in total):
 - D-4.05 Typical Roof Sign Curb
- 1.3 **ADD** John Peachey & Associates Innovative Signage Inc. drawings (11" x 17"), dated June 28, 2017 (4 drawings in total):
 - Page 1 of 4: Sign Type: A
 - Page 2 of 4: Sign Type: A
 - Page 3 of 4: Sign Type: A
 - Page 4 of 4: Sign Type: B

END OF ADDENDUM No. 1



Project title/Titre du projet GULF OF GEORGIA CANNERY ADMIN. BUILDING		Drawing title/Titre du dessin TYPICAL ROOF SIGN CURB	
12138 Fourth Ave., Richmond B.C.		ISSUED FOR ADDENDUM #1 - JULY ##, 2017	
Consultant Signature Only	PWGSC Project Manager/Administrateur de Projets TPSGC TOM DUNPHY	Scale/Echelle 1:5	RDH
Designed by/Concept par PCK	PWGSC, Regional Manager, Architectural and Engineering Services/ Gestionnaire régionale, Services d'architectural et de génie, TPSGC PREETIPAL PAUL	Date/Date JULY 21, 2017	
Drawn by/Dessine par ADEC	Project No./No. du projet R.060702.001	Sheet/Feuille D-4.05	Revision/Revision

Channel Letter Cannery Signage

QUANTITY: 2 (sets)

☐ INTERIOR ■ EXTERIOR

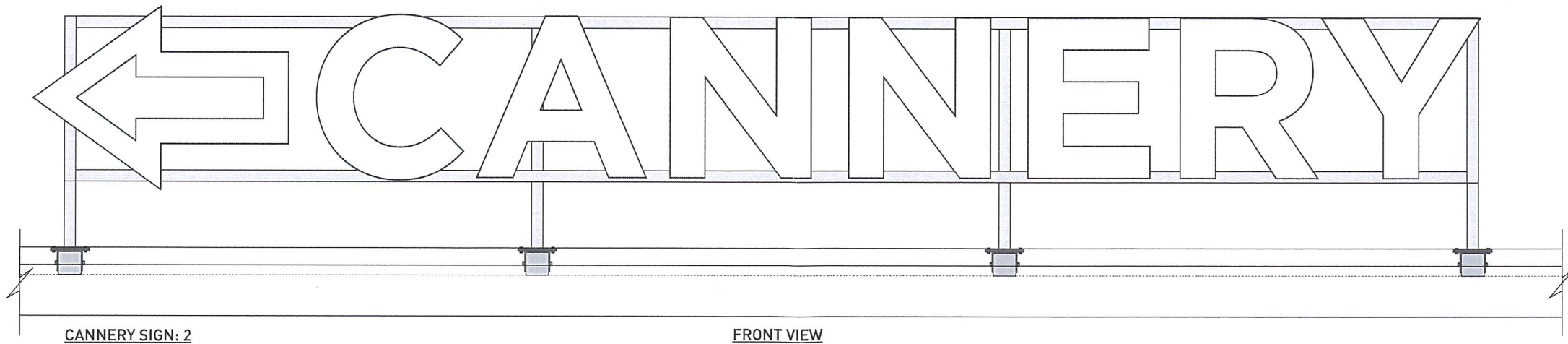
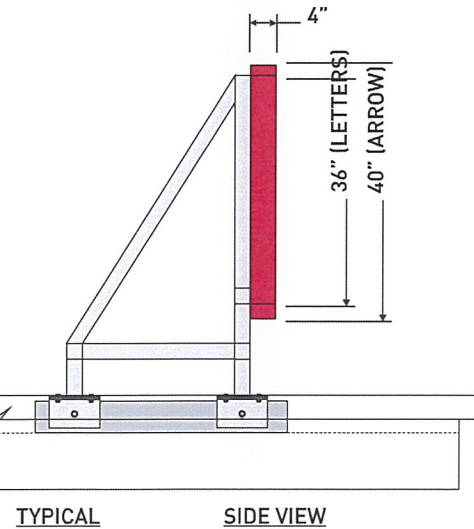
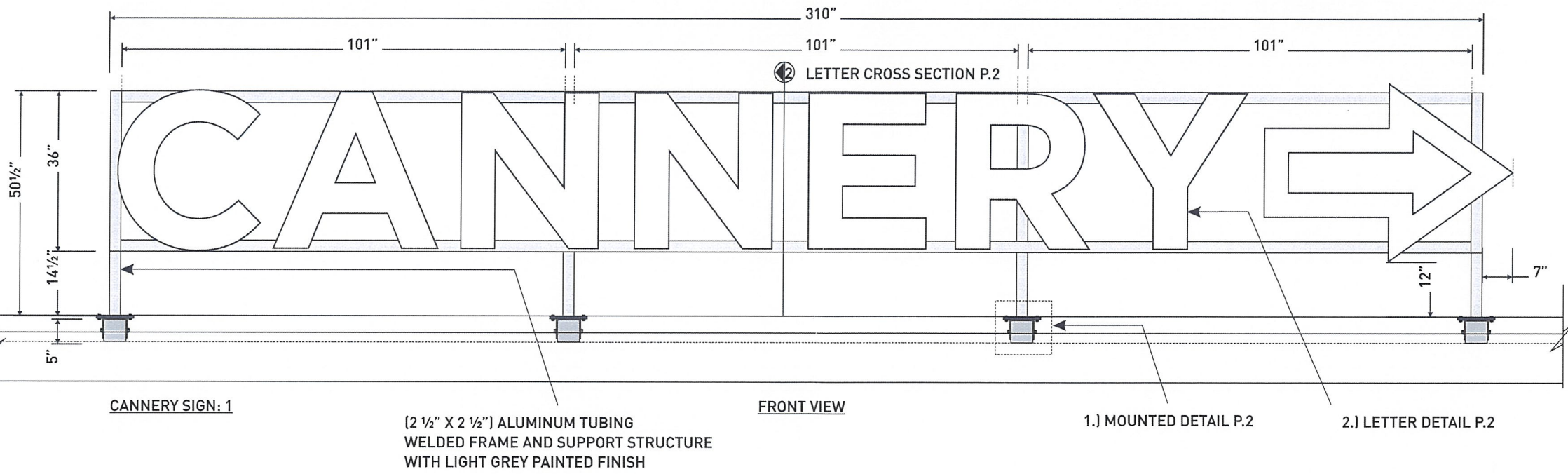
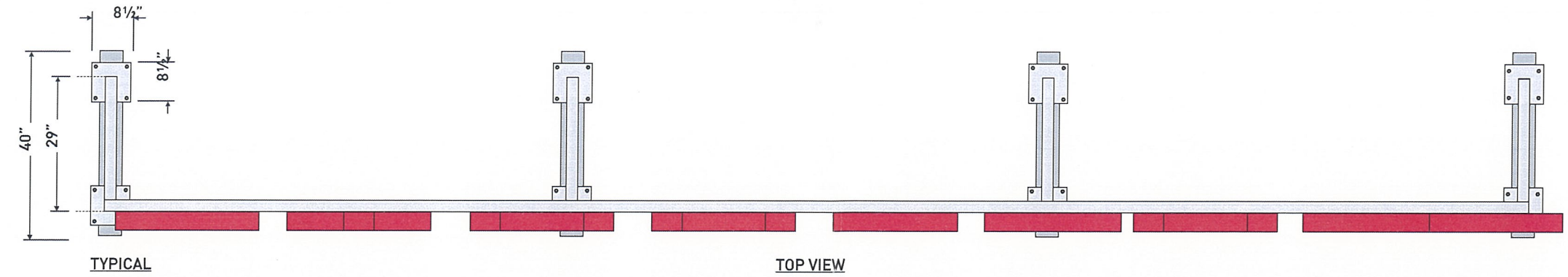
NOTES: See elevation for location on page 3.



JOHN PEACHEY & ASSOCIATES
 INNOVATIVE SIGNAGE INC.
 A Division of Ampco Manufacturers Inc.
 208-1075 West 1st Street
 North Vancouver, BC V7P 3T4
 Ph: 604-984-4395 Fax: 604-984-4495

CLIENT: RDH
 PROJECT: Gulf of Georgia Cannery
 PROJECT NUMBER: 102132
 ACCT MGR: JV
 PROJ MGR: SP

REVISION	DATE	DESIGNER
1	NOV. 29/16	KG
2	DEC. 01/16	KG
3	JUN. 28/17	KG



- Notes**
1. Elevations are for conceptual purposes only - nts
 2. All sizes to be confirmed by site measurements
 3. All materials and colours to be confirmed
 4. All signage to meet local and general electrical and mechanical requirements
 5. All signage sizes and mounting locations to adhere to city bylaws
 6. Power to site and hook up by others
 7. Engineering by others if required

Innovative Signage Inc. retains title and all copyrights to the artwork and drawings shown here, and all adaptations thereof in whatever media. The design and artwork shown on these drawings are intellectual property, containing proprietary information and as such they are protected by copyright laws. Any reproduction or manufacturing, in whole or in part, is strictly prohibited, except as specified by Innovative Signage Inc.

ARTWORK FILE:
 Gulf of Georgia Cannery - Design - 102132
 PDF FILE:
 Gulf of Georgia Cannery - Design - 102132

SIGN TYPE: A
 SCALE: 1:30

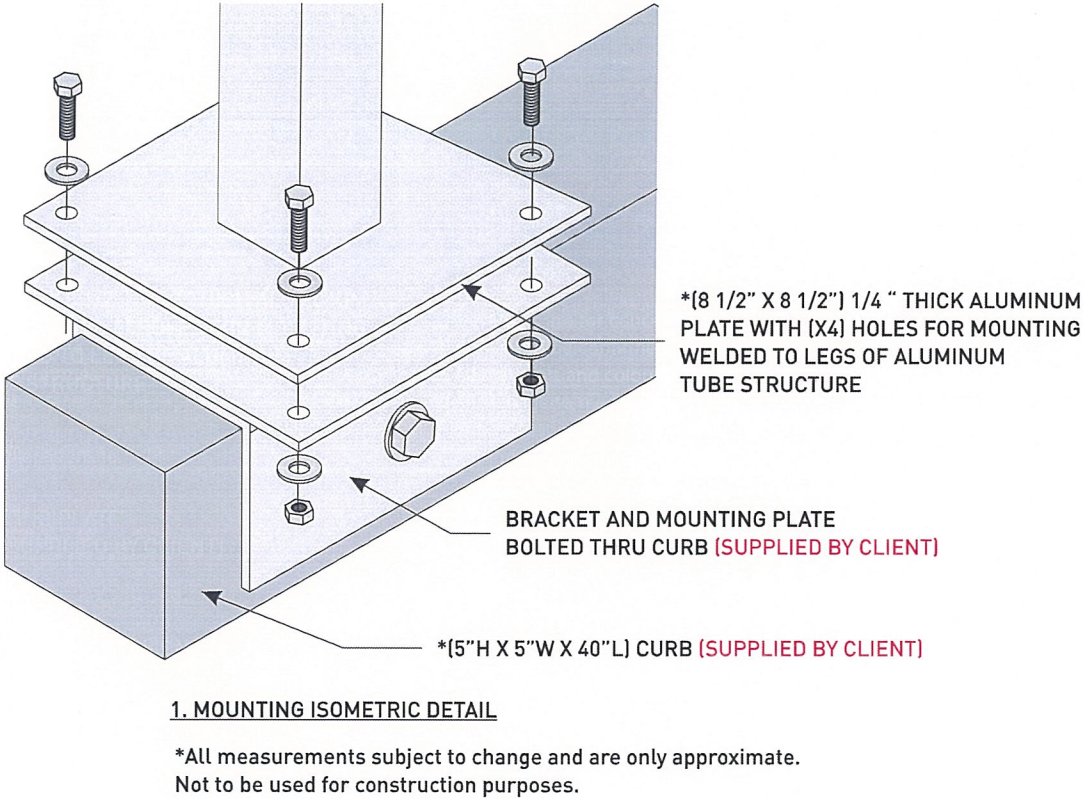
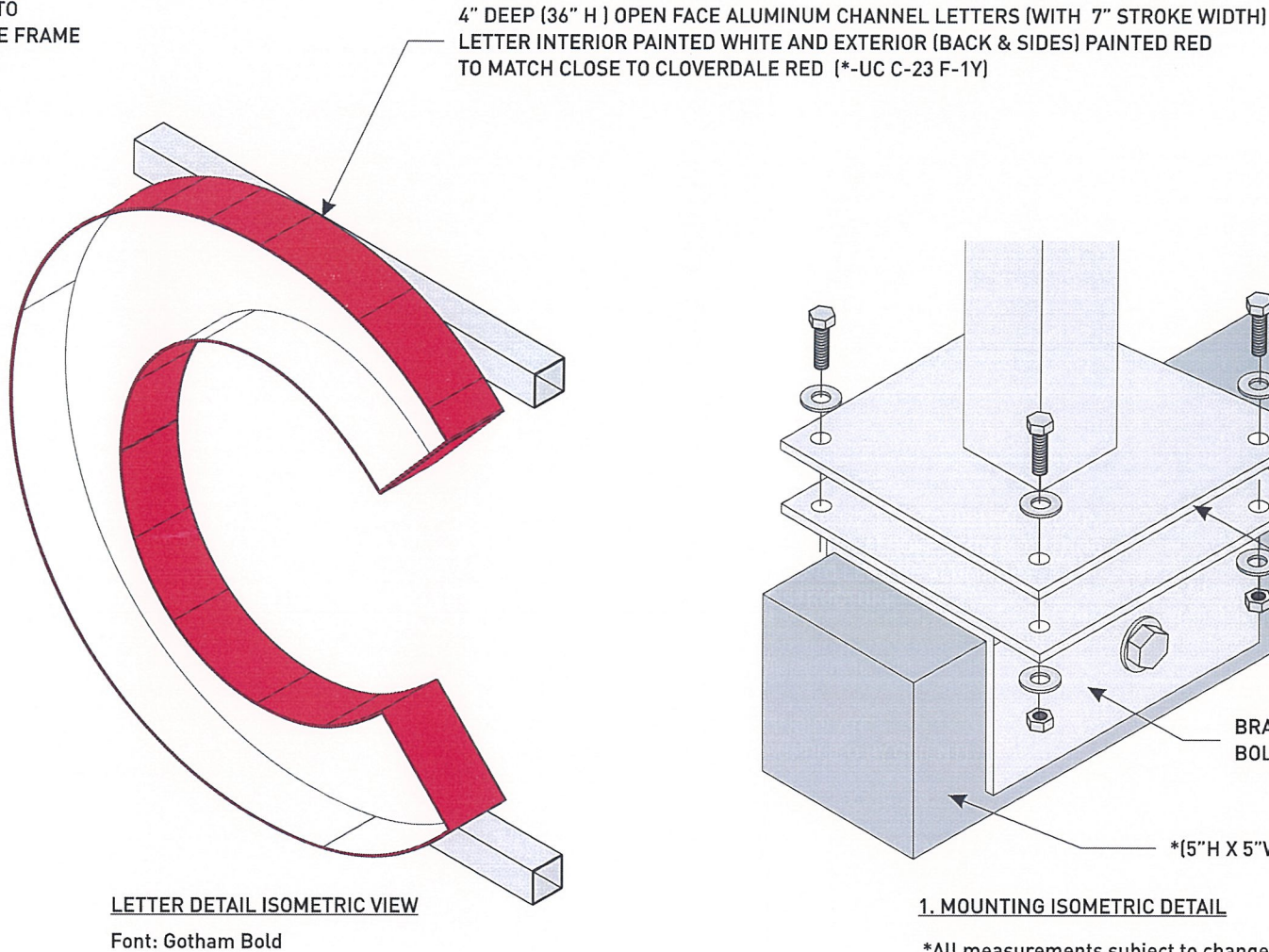
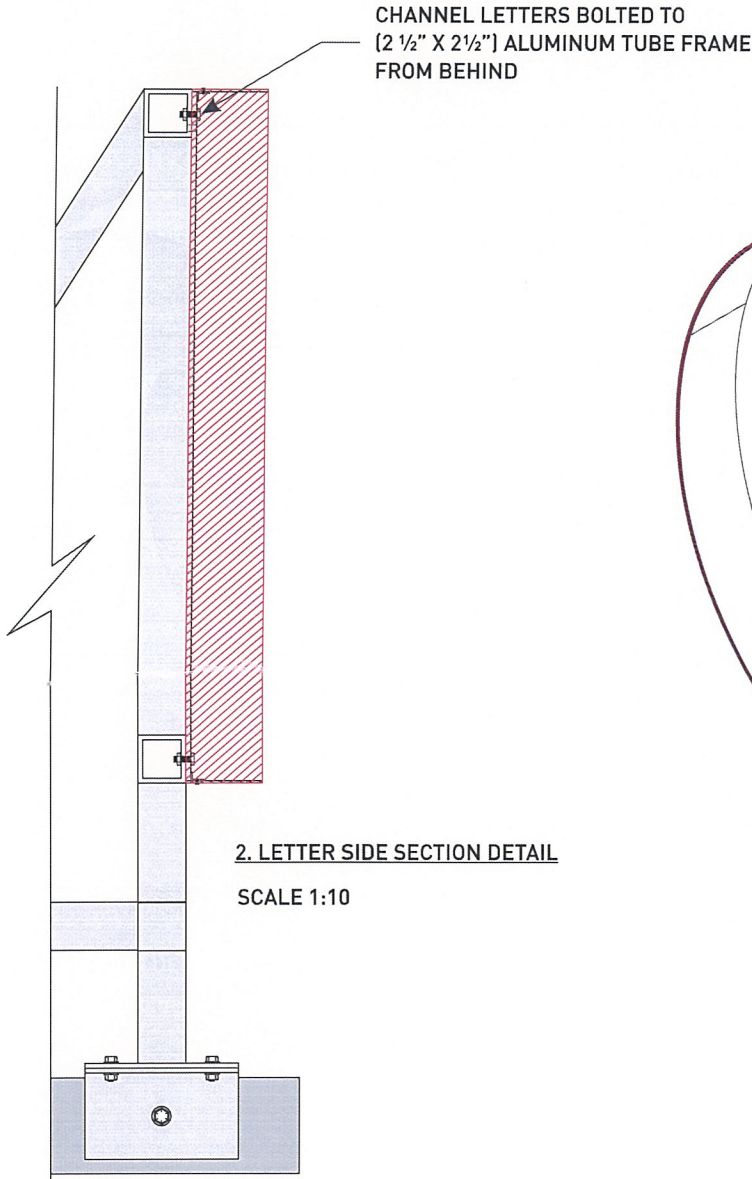
Channel Letter Cannery Signage - Details

NOTES: See elevation for location on page 3.

CLIENT: RDH
 PROJECT: Gulf of Georgia Cannery
 PROJECT NUMBER: 102132

ACCT MGR: JV
 PROJ MGR: SP

REVISION	DATE	DESIGNER
1	NOV. 29/16	KG
2	DEC. 01/16	KG
3	JUN. 28/17	KG



- Notes**
1. Elevations are for conceptual purposes only - nts
 2. All sizes to be confirmed by site measurements
 3. All materials and colours to be confirmed
 4. All signage to meet local and general electrical and mechanical requirements
 5. All signage sizes and mounting locations to adhere to city bylaws
 6. Power to site and hook up by others
 7. Engineering by others if required

Innovative Signage Inc. retains title and all copyrights to the artwork and drawings shown here, and all adaptations thereof in whatever media. The design and artwork shown on these drawings are intellectual property, containing proprietary information and as such they are protected by copyright laws. Any reproduction or manufacturing, in whole or in part, is strictly prohibited, except as specified by Innovative Signage Inc.

ARTWORK FILE:
 Gulf of Georgia Cannery - Design - 102132

PDF FILE:
 Gulf of Georgia Cannery - Design - 102132

SIGN TYPE: A

SCALE: AS NOTED

Channel Letter Cannery Signage - Elevation

CLIENT: RDH
 PROJECT: Gulf of Georgia Cannery
 PROJECT NUMBER: 102132
 ACCT MGR: JV
 PROJ MGR: SP

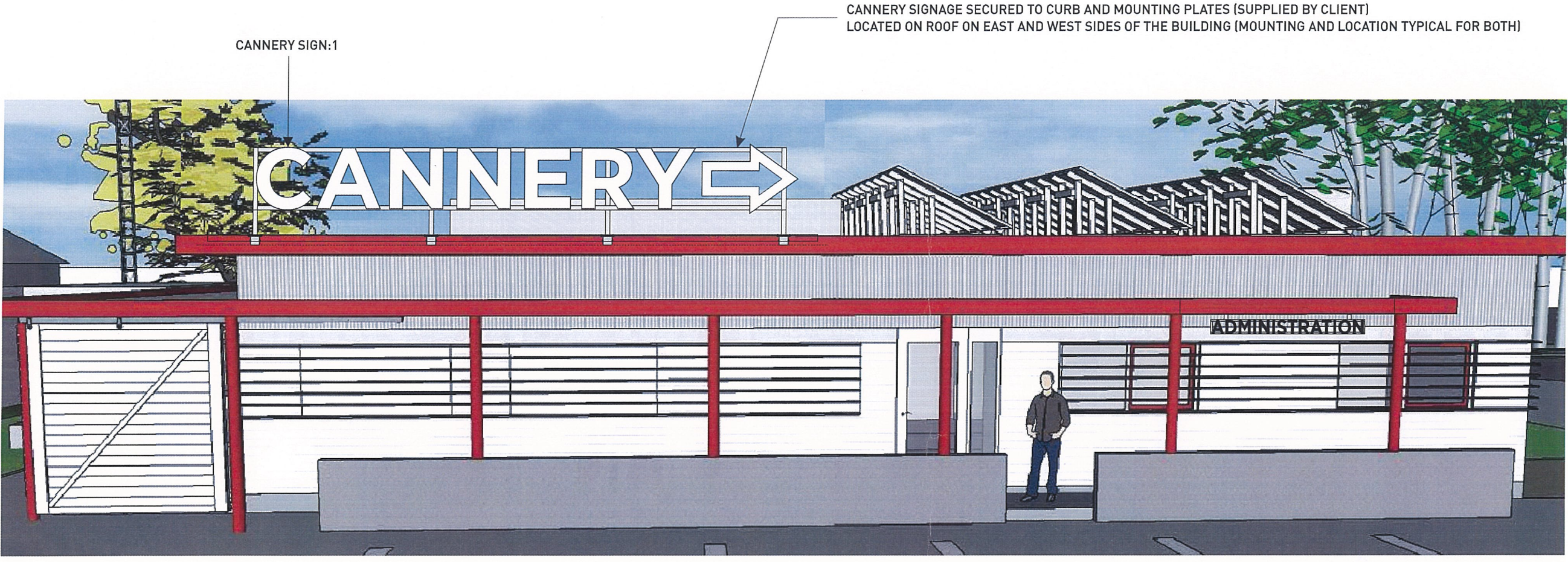
REVISION	DATE	DESIGNER
1	NOV. 29/16	KG
2	DEC. 01/16	KG
3	JUN. 28/17	KG

- Notes**
1. Elevations are for conceptual purposes only - nts
 2. All sizes to be confirmed by site measurements
 3. All materials and colours to be confirmed
 4. All signage to meet local and general electrical and mechanical requirements
 5. All signage sizes and mounting locations to adhere to city bylaws
 6. Power to site and hook up by others
 7. Engineering by others if required

Innovative Signage Inc. retains title and all copyrights to the artwork and drawings shown here, and all adaptations thereof in whatever media. The design and artwork shown on these drawings are intellectual property, containing proprietary information and as such they are protected by copyright laws. Any reproduction or manufacturing, in whole or in part, is strictly prohibited, except as specified by Innovative Signage Inc.

ARTWORK FILE:
 Gulf of Georgia Cannery - Design - 102132
PDF FILE:
 Gulf of Georgia Cannery - Design - 102132

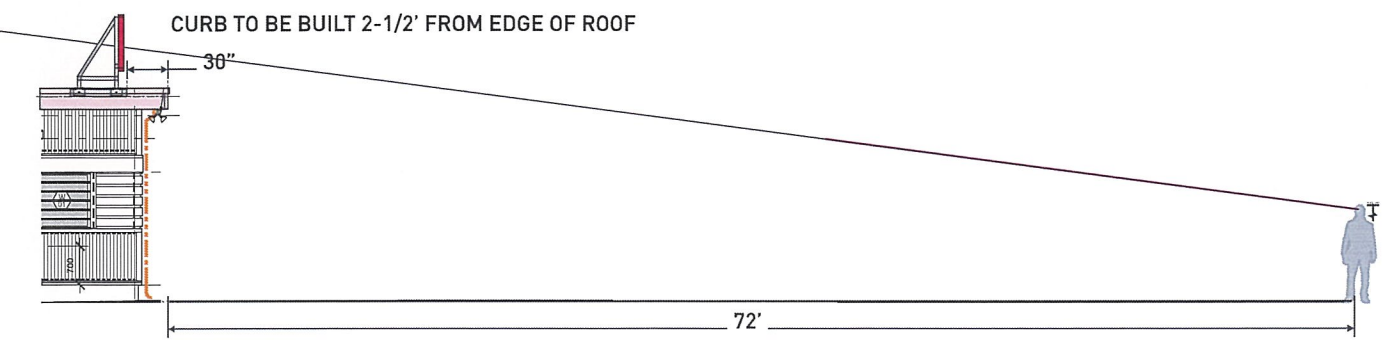
SIGN TYPE: A
SCALE: NTS



WEST ELEVATION Rendering not to scale for representational and location purposes only.



EAST ELEVATION Rendering not to scale for representational and location purposes only.



Visual Sight Line Distance Elevation may not be exactly as shown. For representational purposes only.

Administration Signage

QUANTITY: 1 (set)

□ INTERIOR ■ EXTERIOR



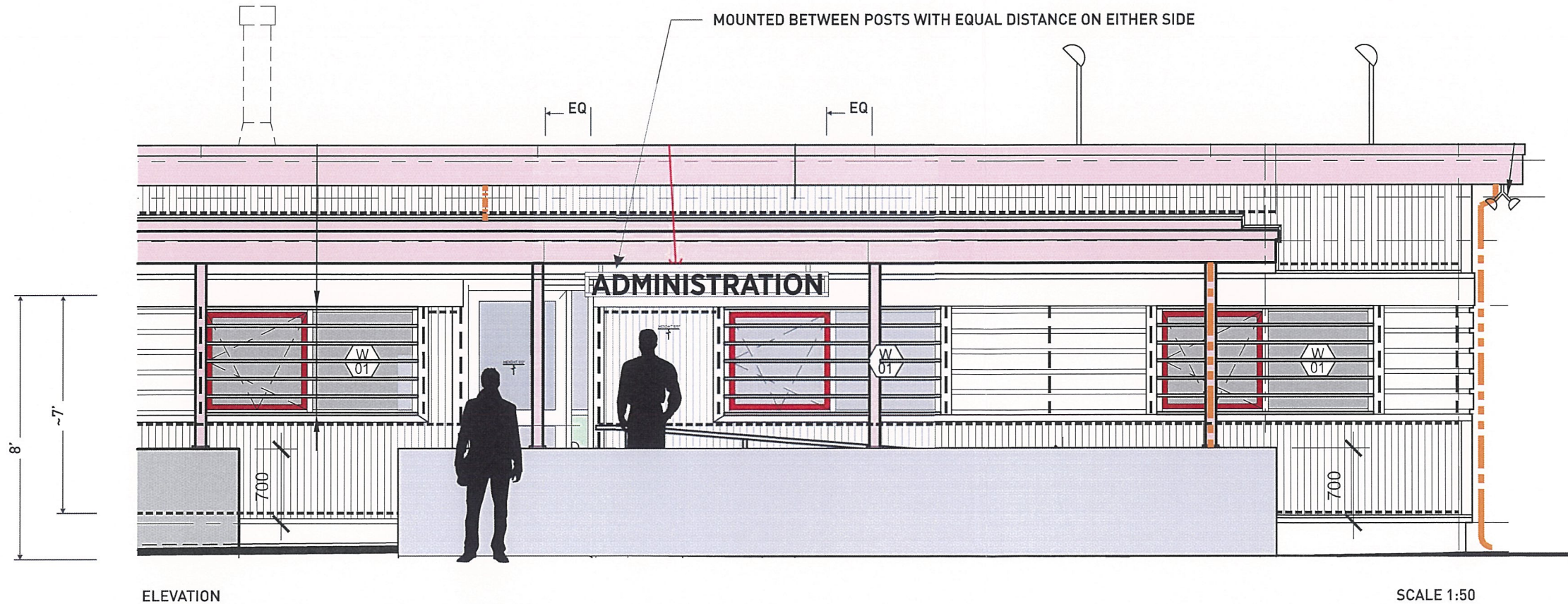
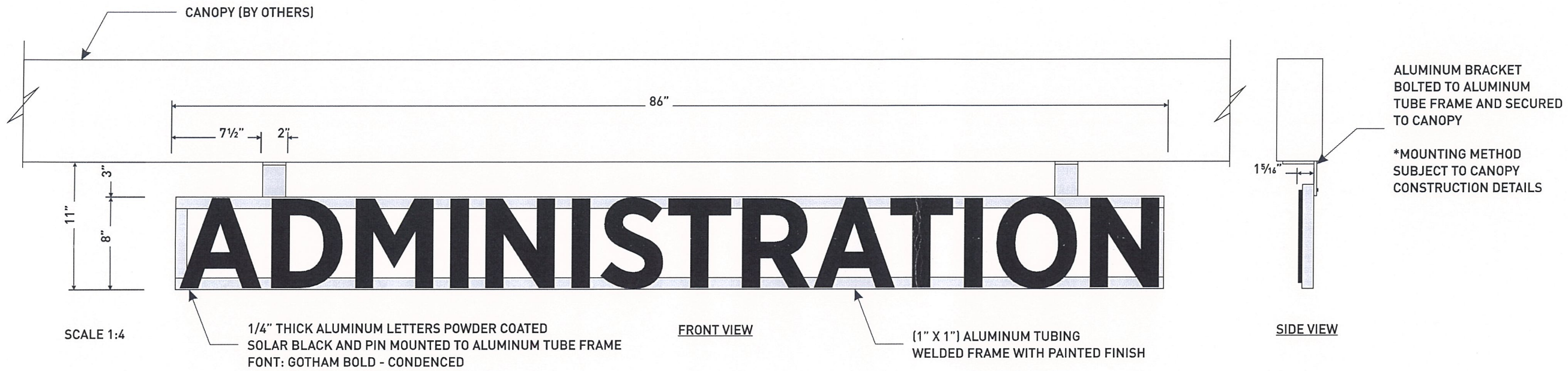
JOHN PEACHEY & ASSOCIATES
 INNOVATIVE SIGNAGE INC.
 A Division of Ampco Manufacturers Inc.

208-1075 West 1st Street
 North Vancouver, BC V7P 3T4
 Ph: 604-984-4395 Fax: 604-984-4495

CLIENT: RDH
 PROJECT: Gulf of Georgia Cannery
 PROJECT NUMBER: 102132

ACCT MGR: JV
 PROJ MGR: SP

REVISION	DATE	DESIGNER
1	NOV. 29/16	KG
2	DEC. 01/16	KG
3	JUN. 28/17	KG



- Notes**
1. Elevations are for conceptual purposes only - nts
 2. All sizes to be confirmed by site measurements
 3. All materials and colours to be confirmed
 4. All signage to meet local and general electrical and mechanical requirements
 5. All signage sizes and mounting locations to adhere to city bylaws
 6. Power to site and hook up by others
 7. Engineering by others if required

Innovative Signage Inc. retains title and all copyrights to the artwork and drawings shown here, and all adaptations thereof in whatever media. The design and artwork shown on these drawings are intellectual property, containing proprietary information and as such they are protected by copyright laws. Any reproduction or manufacturing, in whole or in part, is strictly prohibited, except as specified by Innovative Signage Inc.

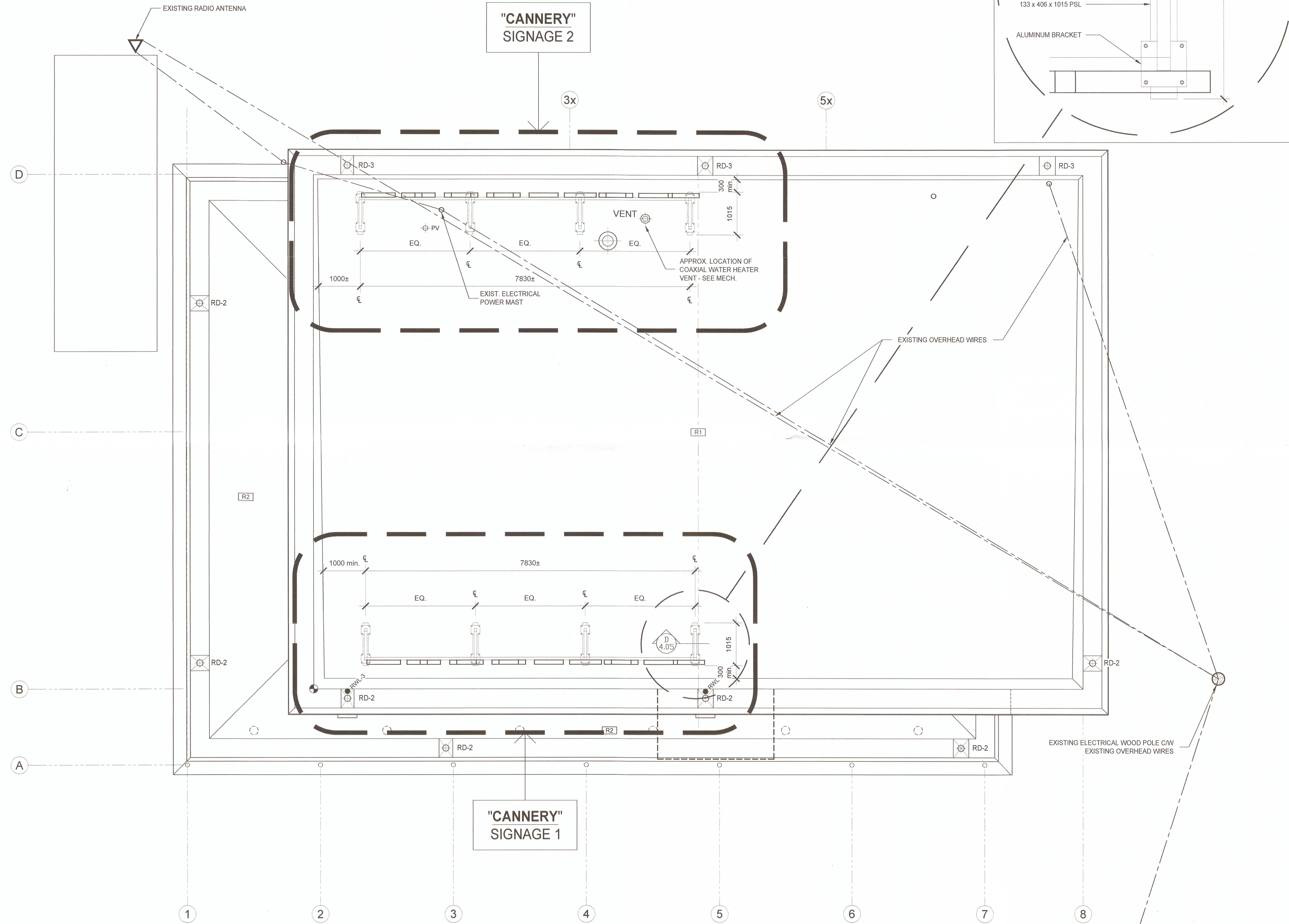
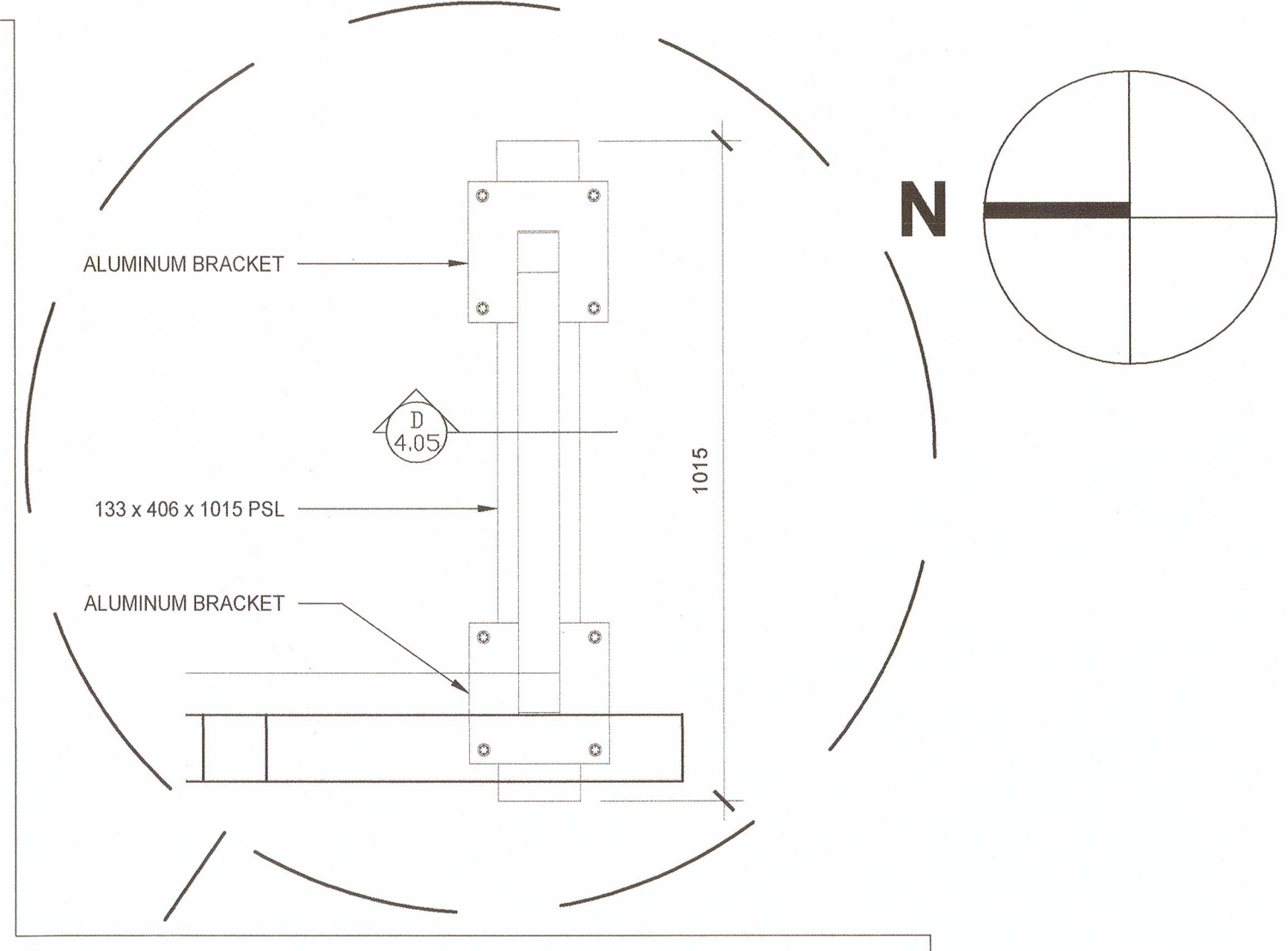
ARTWORK FILE:
 Gulf of Georgia Cannery - Design - 102132

PDF FILE:
 Gulf of Georgia Cannery - Design - 102132

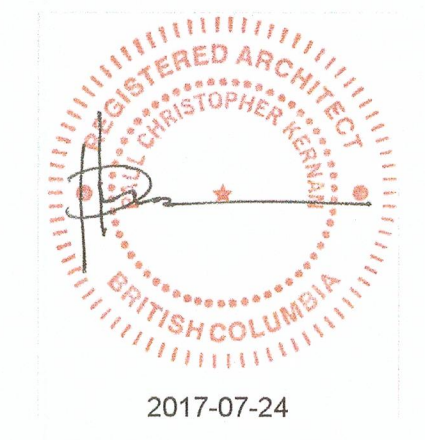
SIGN TYPE: B

SCALE: AS NOTED

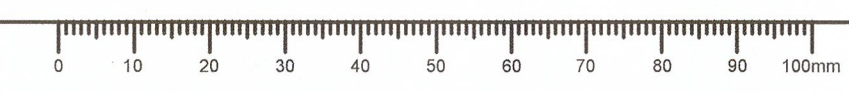
NOTE:
 SIGNAGE PLANS AND ELEVATIONS TO BE READ IN CONJUNCTION WITH DRAWINGS PREPARED BY INNOVATIVE SIGNAGE INC.



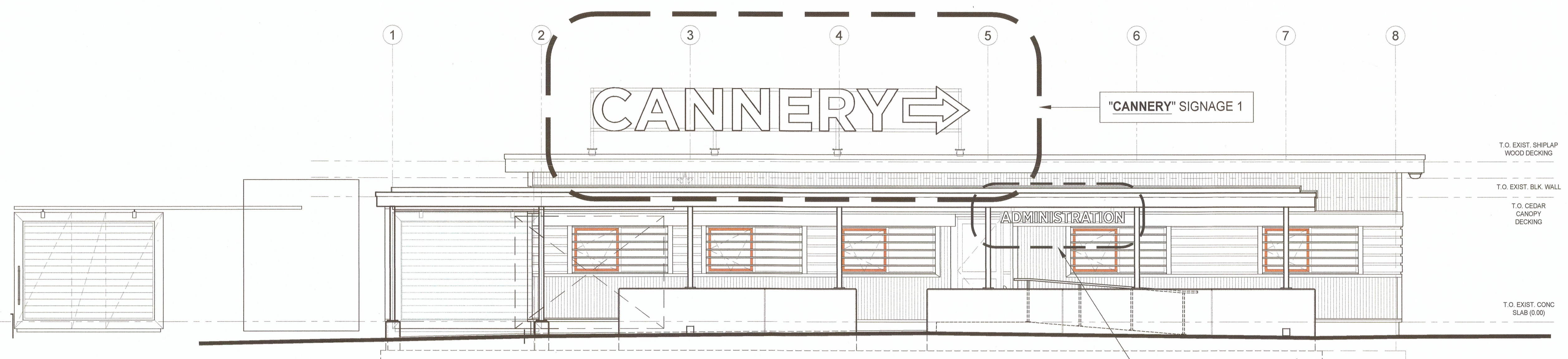
NOTE: FOR SIGNAGE ELEVATIONS SEE A-2.2



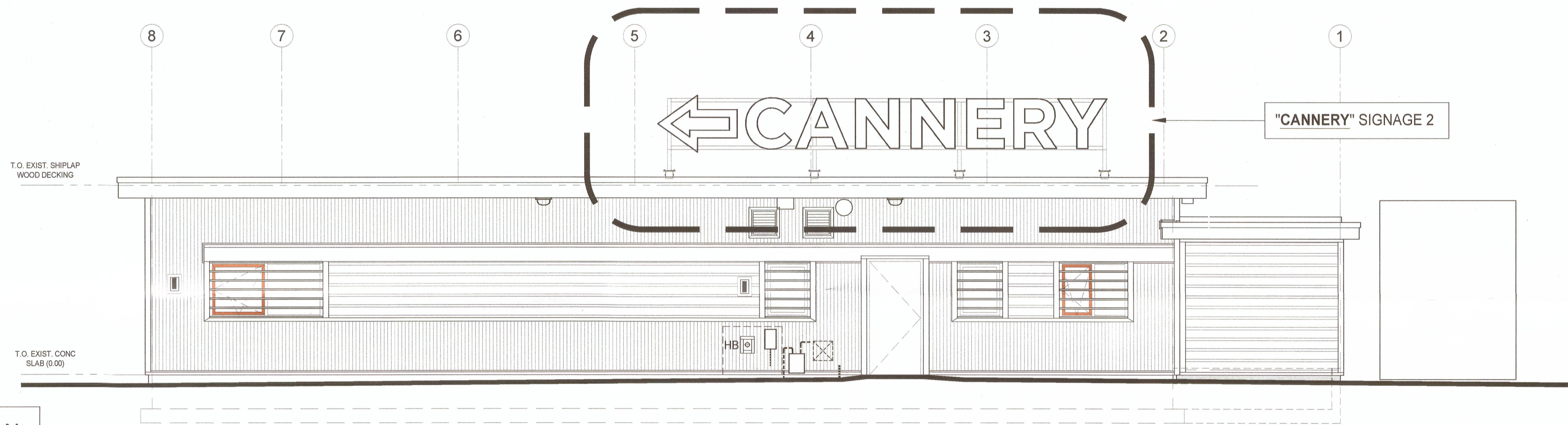
1	ISSUED FOR ADDENDUM #1	JULY 21, 2017
Revision / Revision	Description / Description	Date / Date
Client / client PARKS CANADA WESTERN REGION STEVESTON, B.C. NATIONAL HISTORIC SITE		
Project title / Titre du projet GULF OF GEORGIA CANNERY ADMINISTRATION BUILDING		
12138 Fourth Ave., Richmond B.C.		
Consultant Approval Box Only		
Designed by / Concept par PK		
Drawn by / Dessiné par AC		
PWGSC, Project Manager / Administrateur de Projets TPSGC TOM DUNPHY		
PWGSC, Regional Manager, Architectural and Engineering Services / Gestionnaire régionale, Services d'architecture et de génie, TPSGC PREETIPAL PAUL		
Drawing title / Titre du dessin SIGNAGE PLAN SCALE: 1:50		
Project no. / no. du Projet R.060702.001	Sheet / Feuille A-1.2A	Revision no. / Révision no.



NOTE:
 SIGNAGE PLANS AND ELEVATIONS TO BE READ IN CONJUNCTION WITH DRAWINGS PREPARED BY INNOVATIVE SIGNAGE INC.



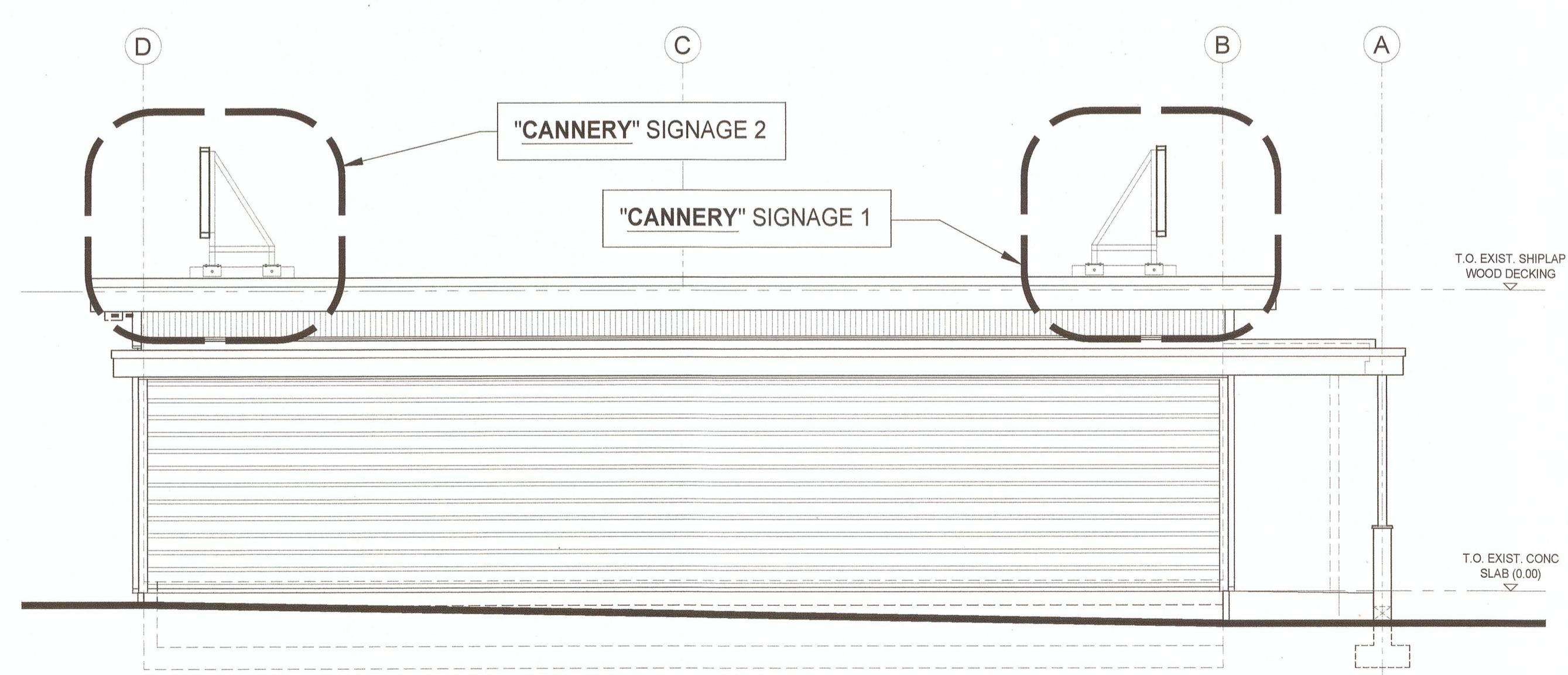
1 WEST ELEVATION
 SCALE: 1:50



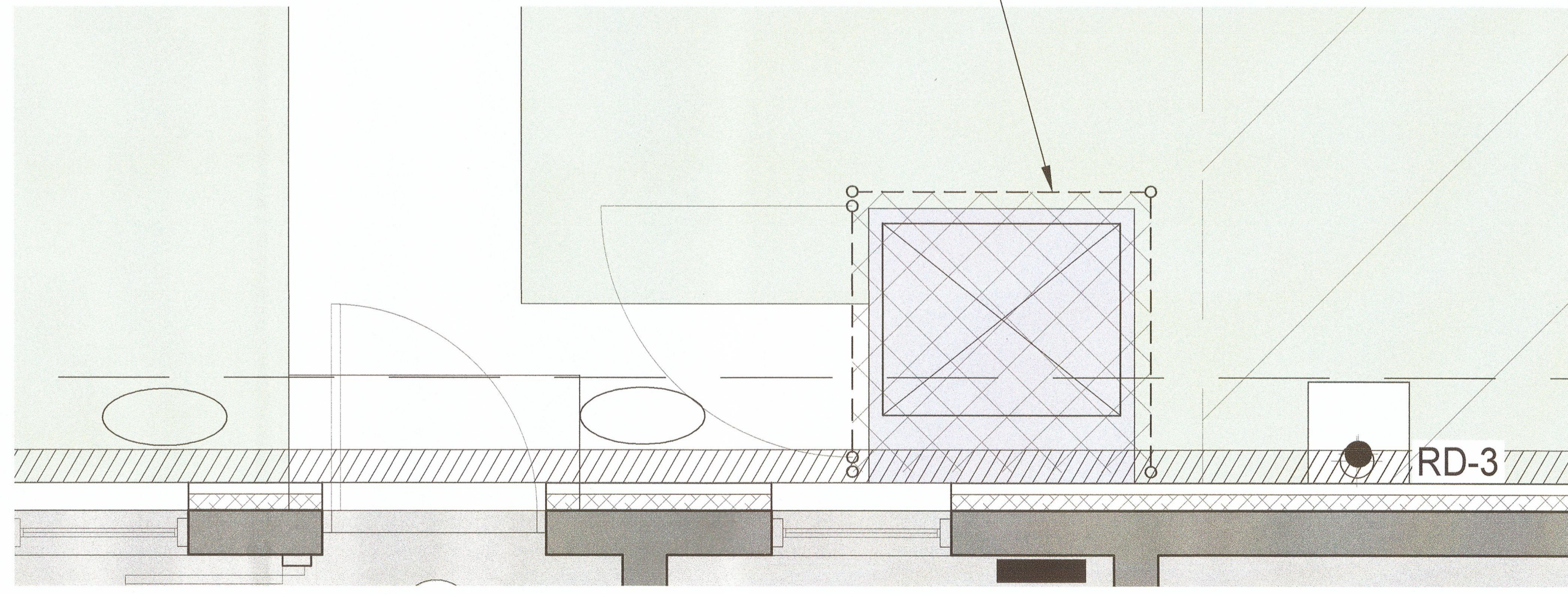
2 EAST ELEVATION
 SCALE: 1:50

PROVIDE AN APPROX. 1350 x 1275 x 1200 HIGH GALV. METAL CHAIN LINK ENCLOSURE TO HEAT PUMP OUTDOOR UNIT. ENCLOSURE TO HAVE 4 POSTS, 4 TOP RAILS, ONE CHAIN LINK GATE TO NORTH SIDE C/W LOCK MECHANISM, AND A CHAIN LINK TOP WIRED TO TOP RAILS. SET POSTS 610 MIN. INTO CONCRETE FILLED POST HOLES. REFER ALSO TO MECH. DRAWINGS. FIELD COORDINATE THE EXACT CONC. PAD, AHU, AND HOSE BIB LOCATIONS ON SITE.

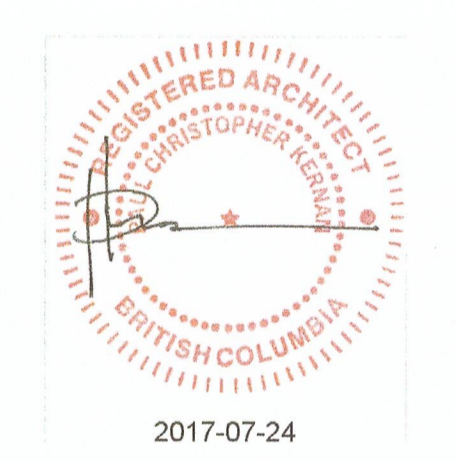
NOTE: FOR SIGNAGE PLAN LOCATIONS SEE A-1.2A



3 NORTH ELEVATION
 SCALE: 1:50



4 PARTIAL PLAN DETAIL AT EAST ELEVATION
 SCALE: 1:20



Revision / Revision	Description / Description	Date / Date
1	ISSUED FOR ADDENDUM #1	JULY 21, 2017

Client / client
PARKS CANADA
WESTERN REGION
 STEVESTON, B.C. NATIONAL HISTORIC SITE

Project title / Titre du projet
GULF OF GEORGIA CANNERY
ADMINISTRATION BUILDING

12138 Fourth Ave., Richmond B.C.

Designed by / Concept par
 PK

Drawn by / Dessiné par
 AC

PWGSC, Project Manager / Administrateur de Projets TPSGC
 TOM DUNPHY

PWGSC, Regional Manager, Architectural and Engineering Services / Gestionnaire régionale, Services d'architectural et de génie, TPSGC
 PREETIPAL PAUL

Drawing title / Titre du dessin
SIGNAGE ELEVATIONS
 SCALE: AS NOTED

Project no. / no. du projet
 R.060702.001

Sheet / Feuille
 A-2.2

Revision no. / La Revision no.
 (blank)

