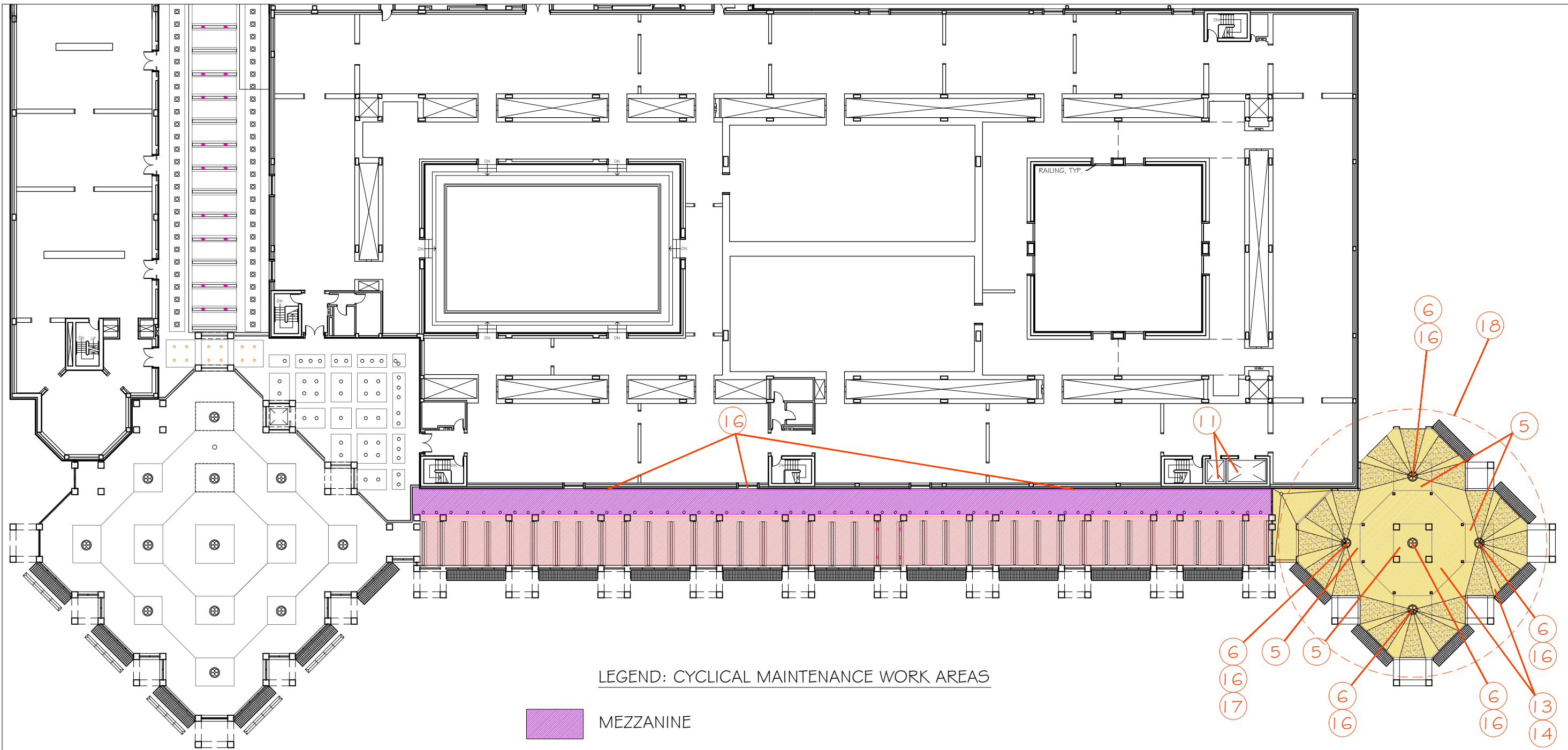
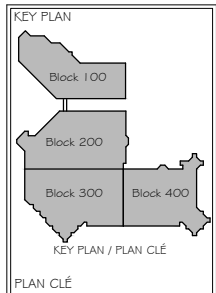


LEGEND: CYCLICAL MAINTENANCE WORK AREAS

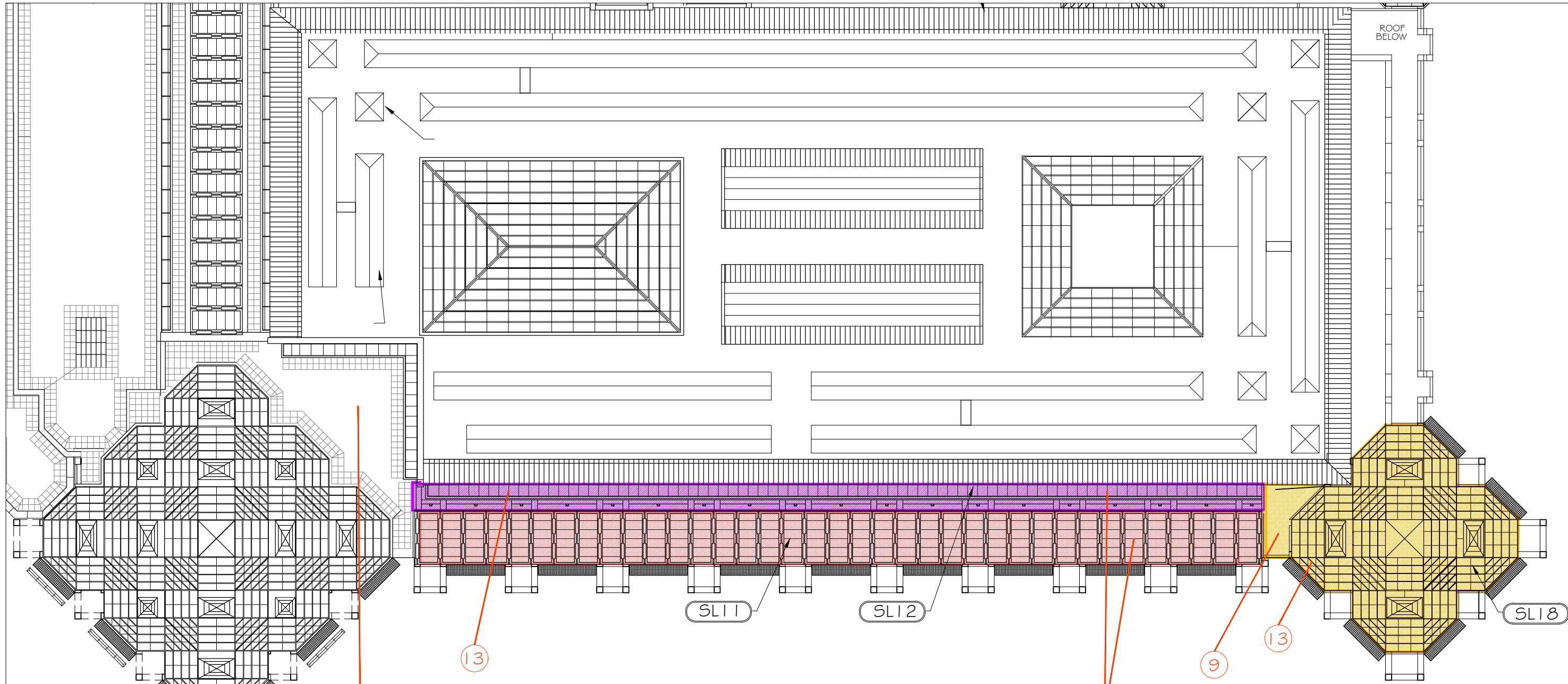
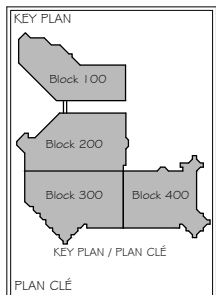
- MEZZANINE SLOPED SILL
- RAMPED COLONNADE
- MAIN ENTRANCE PAVILION
- ELEVATORS E 10 & E 11 (REPAIR + MAINTENANCE)



LEGEND: CYCLICAL MAINTENANCE WORK AREAS

- MEZZANINE
- RAMPED COLONNADE
- MAIN ENTRANCE PAVILION

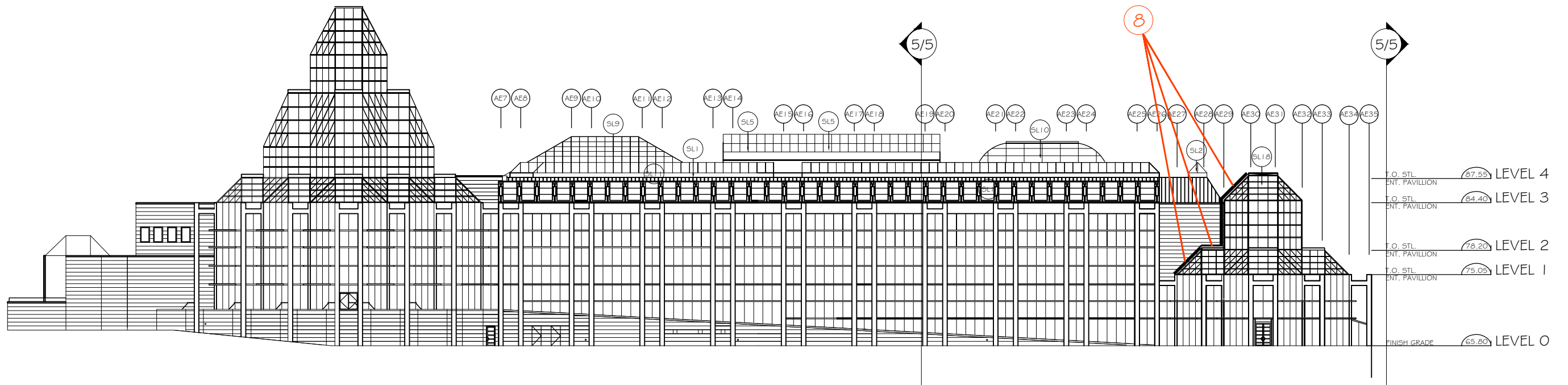
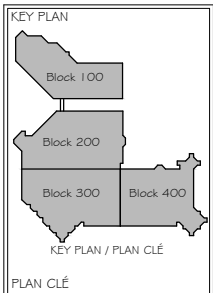
DÉPARTEMENT FACILITIES PLANNING AND MANAGEMENT PLANIFICATION ET GESTION DES IMMEUBLES	DÉPARTEMENT REFLECTED CEILING PLAN TITRE	NOTES COMMENTAIRES	BLOCK 300 + 400	BLOC 4000	LEVEL N.T.S.	NIVEAU ÉCHELLE	UPDATED JAN 31 2017 M. SIMISTER	MIS A JOUR PAR	PAGE 2/5
---	--	-----------------------	--------------------	--------------	-----------------	-------------------	---------------------------------------	-------------------	-------------

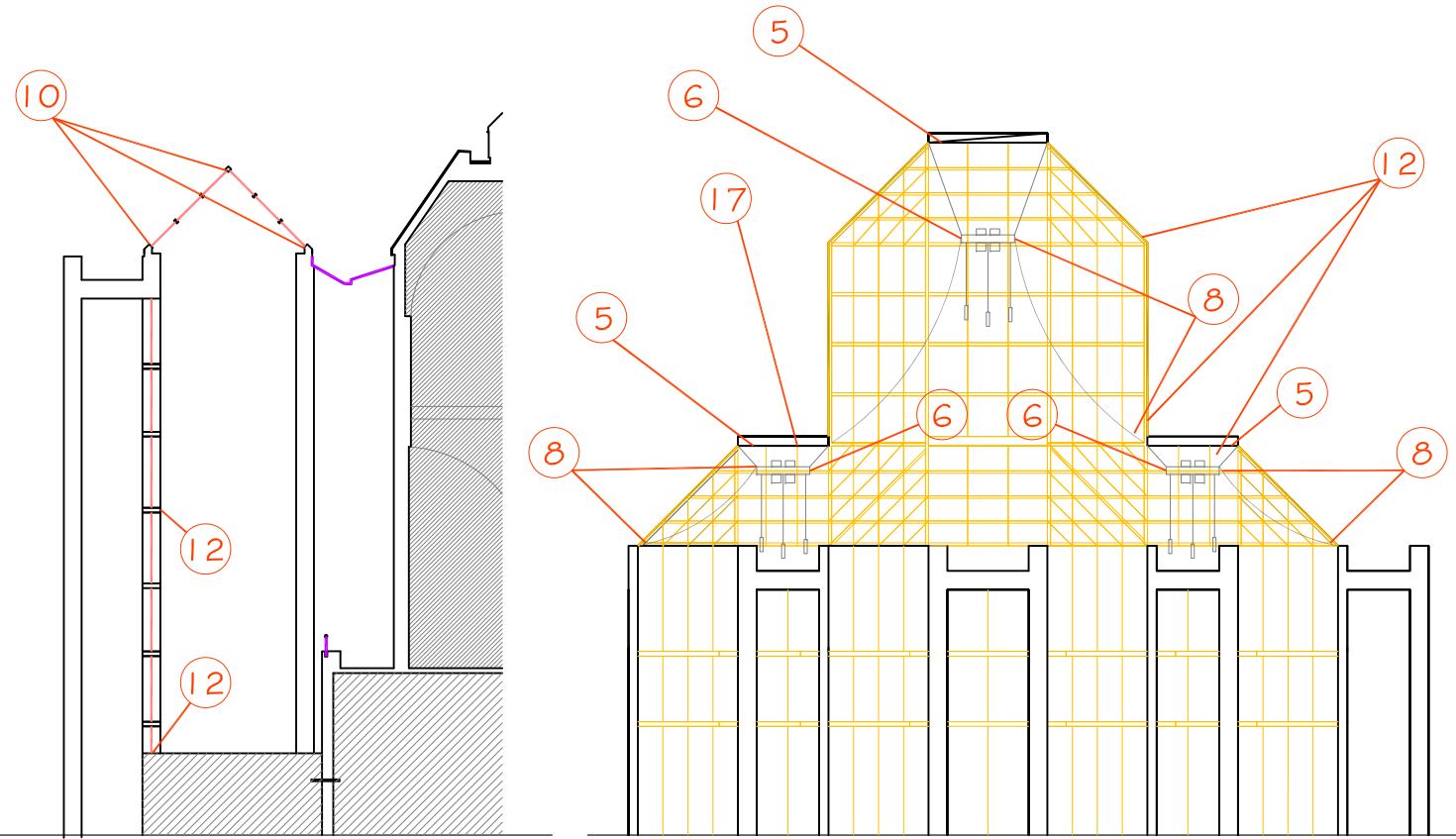
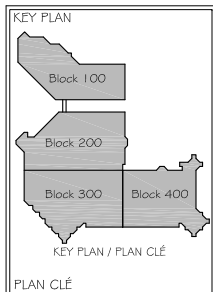
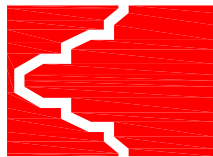


LEGEND: CYCLICAL MAINTENANCE WORK AREAS

- MEZZANINE (SLI 2)
- RAMPED COLONNADE (SLI 1)
- MAIN ENTRANCE PAVILION (SLI 8)

DÉPARTEMENT FACILITIES PLANNING AND MANAGEMENT PLANIFICATION ET GESTION DES IMMEUBLES	DÉPARTEMENT ROOF PLAN	TITRE ROOF PLAN	NOTES COMMENTAIRES	BLOCK ALL	BLOC NIVEAU ROOF	SCALE N.T.S.	ÉCHELLE MIS À JOUR JAN 31 2017 PAR M. SIMISTER	PAGE 3/5
---	--------------------------	--------------------	-----------------------	--------------	------------------------	-----------------	--	-------------





T.O. STL. ENT. PAVILLION	87.55	LEVEL 4
T.O. STL. ENT. PAVILLION	84.40	LEVEL 3
T.O. STL. ENT. PAVILLION	78.20	LEVEL 2
T.O. STL. ENT. PAVILLION	75.05	LEVEL 1
FINISH GRADE	65.80	LEVEL 0

CYCLICAL MAINTENANCE ACTIVITIES			
LEGEND			
#	TASK DESCRIPTION	ESTIMATED DURATION	ACCESS REQUIREMENT LOCATION
5	CEILING TILES & LIGHT FIXTURES - INTEGRITY ASSESSMENT	4 DAYS	INTERIOR ACCESS REQUIRED
6	LIGHT FIXTURES (4x4) WIDE FLOODS (4x4) MEDIUM FLOODS	1 WEEK	INTERIOR ACCESS REQUIRED
7	CLEANING	1 WEEK	INTERIOR/EXTERIOR ACCESS REQUIRED AT ALL GLAZING UNIT LOCATIONS
8	SAILS & COUNTERWEIGHTS	8 WEEKS	INTERIOR ACCESS REQUIRED AT SAIL BASE AND CHROME RING
9	EXTERIOR FIXED LADDER & LIFELINE CERTIFICATION	2 DAYS	EXTERIOR ACCESS REQUIRED AT ALL LADDER LOCATIONS
10	COLONNADE - BLIND REMOVAL	2 WEEKS	INTERIOR ACCESS REQUIRED
11	E10 & E11 MODERNIZATION	12 WEEKS	INTERIOR ACCESS REQUIRED AT BOTH G/RC AND G1 LEVELS
12	HEATERS & GRILLES	1 WEEK	INTERIOR ACCESS REQUIRED
13	VOICE SPEAKERS (4)	1 DAY	INTERIOR ACCESS REQUIRED
14	HEAT SENSORS (4)	2 DAYS	INTERIOR ACCESS REQUIRED
15	PUBLIC WIFI	2 DAYS	INTERIOR ACCESS REQUIRED
16	COLONNADE AND MAIN ENTRANCE LED UPGRADES	1 WEEK	INTERIOR ACCESS REQUIRED
17	HATCH VENTILATION CONTROL UPGRADE	1 WEEK	ROOF ACCESS AND INTERIOR ACCESS
18	TEMPERATURE TRANSMITTER REPLACEMENT	3 DAYS	INTERIOR ACCESS REQUIRED